



PACKARD

SINGLE SIX

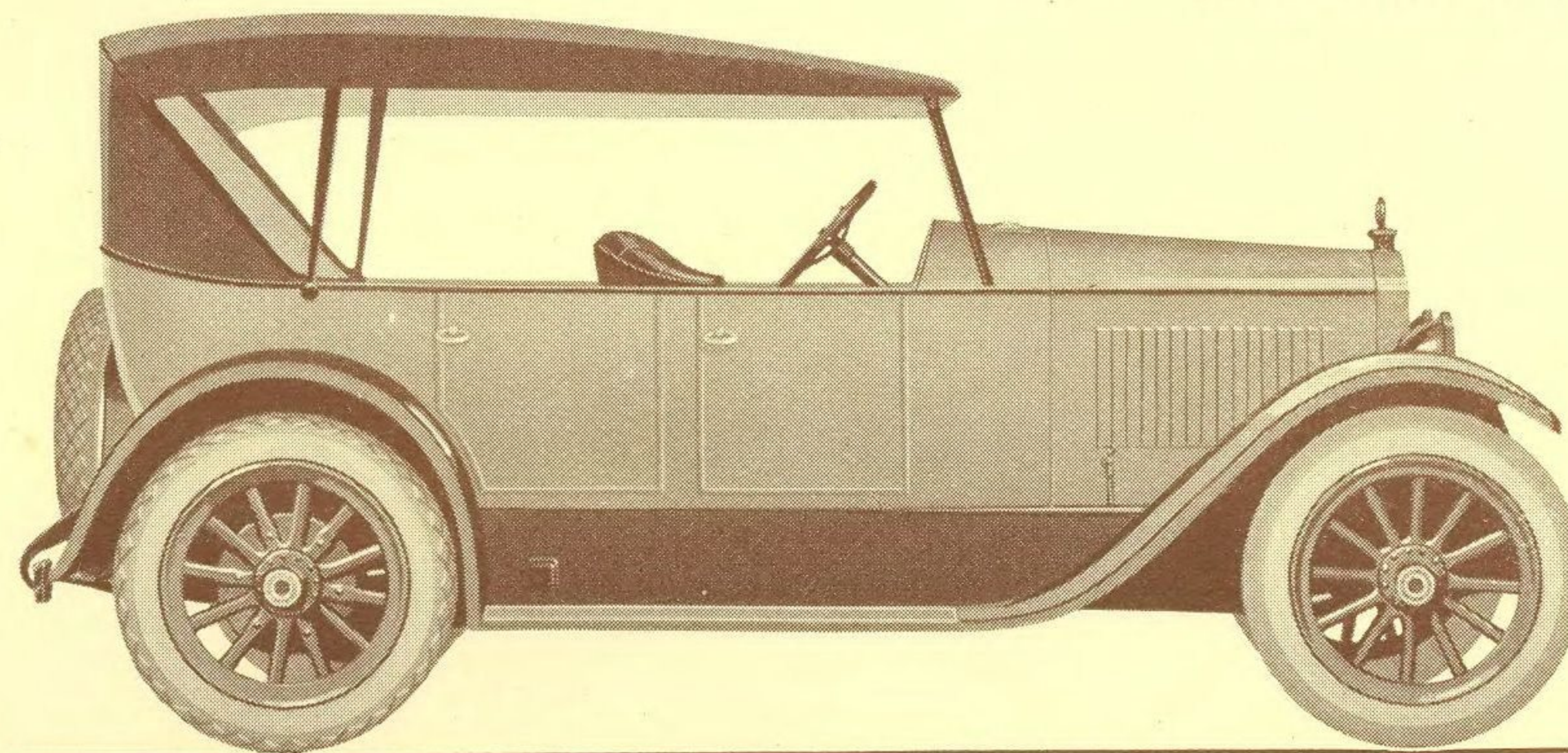
The PACKARD SINGLE SIX

We offer this new car to the public, keenly sensible of our obligation to the Packard name. Accordingly we have worked carefully and with thoroughness in its development, making sure that in all ways it truly met Packard's traditional standards. Our own tests and the experience, so far, of owners make us confident that under normal driving conditions it will deliver service of exceptional character and duration. We expect it to do more, last longer and cost less, simply because it embodies the twenty years of Packard experience.

PACKARD MOTOR CAR COMPANY, *Detroit*

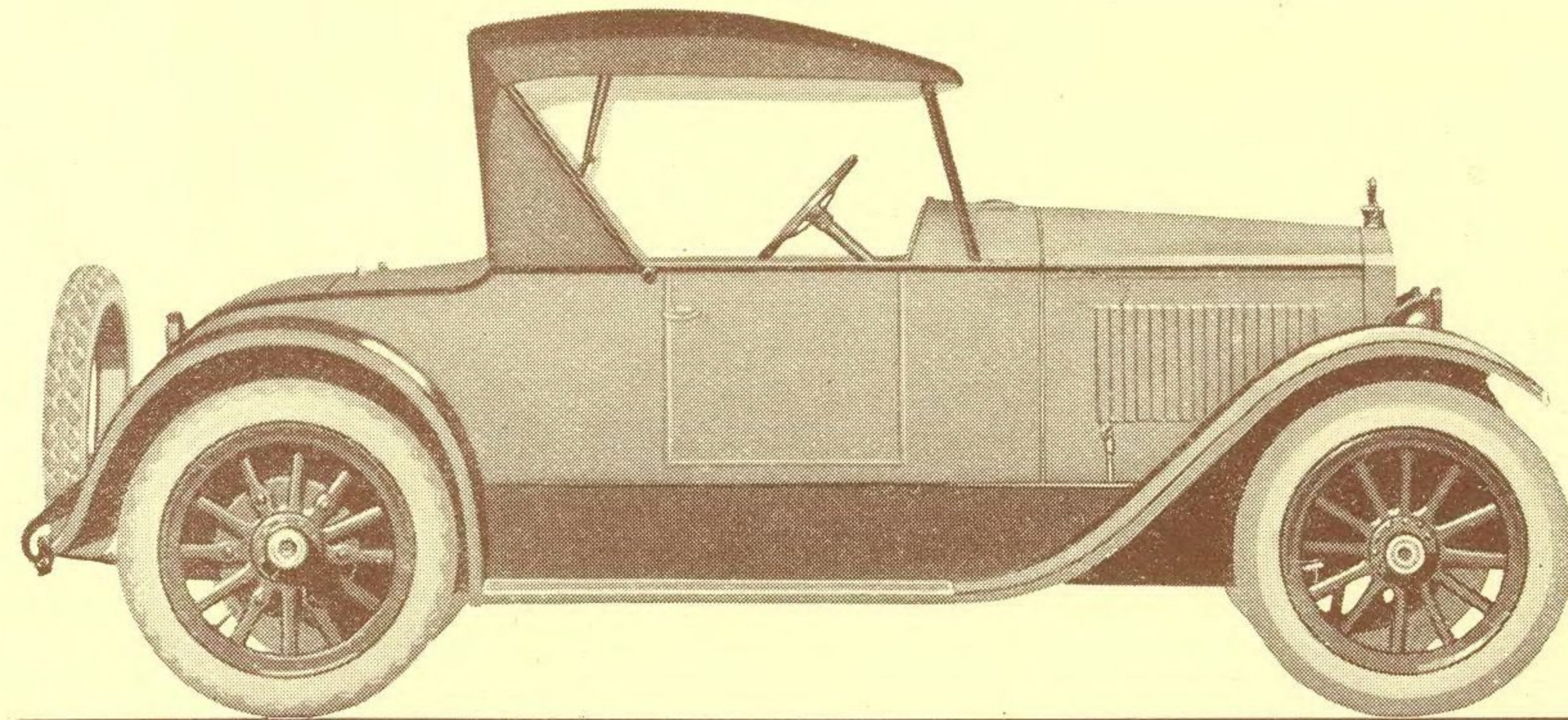
PACKARD SINGLE SIX TOURING CAR

SEATS FIVE COMFORTABLY. FRONT SEAT 41 INCHES WIDE, REAR SEAT 45 INCHES WIDE. SEATS UPHOLSTERED IN LEATHER. NICKEL-PLATED FITTINGS THROUGHOUT. TOP IS SEMI-LINED. CLOSE-FITTING STORM CURTAINS FOLD INTO SPECIALLY CONSTRUCTED POCKETS IN DOORS ON LEFT SIDE.



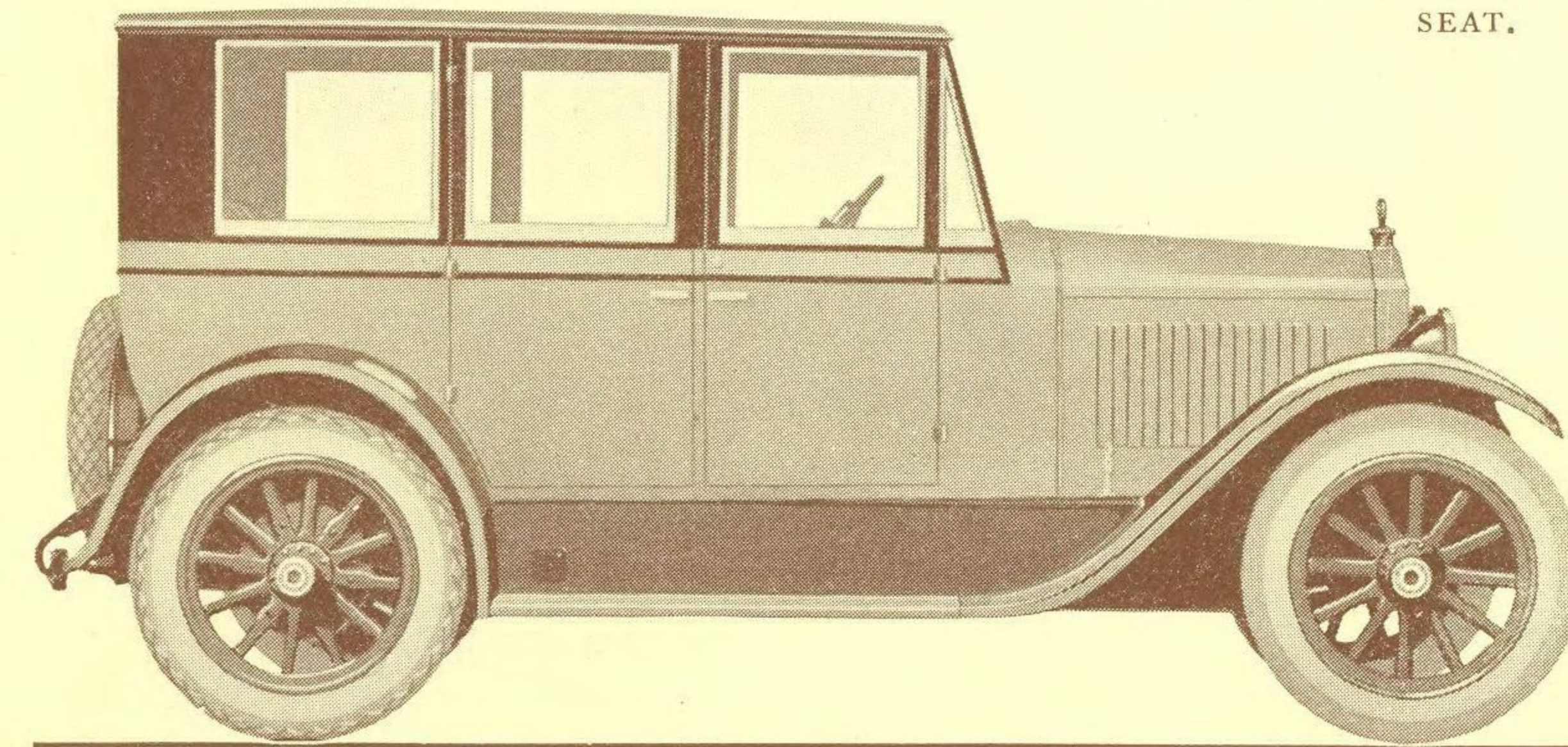
PACKARD SINGLE SIX
RUNABOUT

SEATS TWO COMFORTABLY. GENEROUS
LEG-ROOM OF $26\frac{1}{4}$ INCHES BETWEEN
FRONT SEAT CUSHION AND DASH. SEAT
41 INCHES WIDE, UPHOLSTERED IN
LEATHER. LARGE COMPARTMENT IN
REAR DECK FOR CARRYING LUGGAGE.
TOP IS SEMI-LINED.



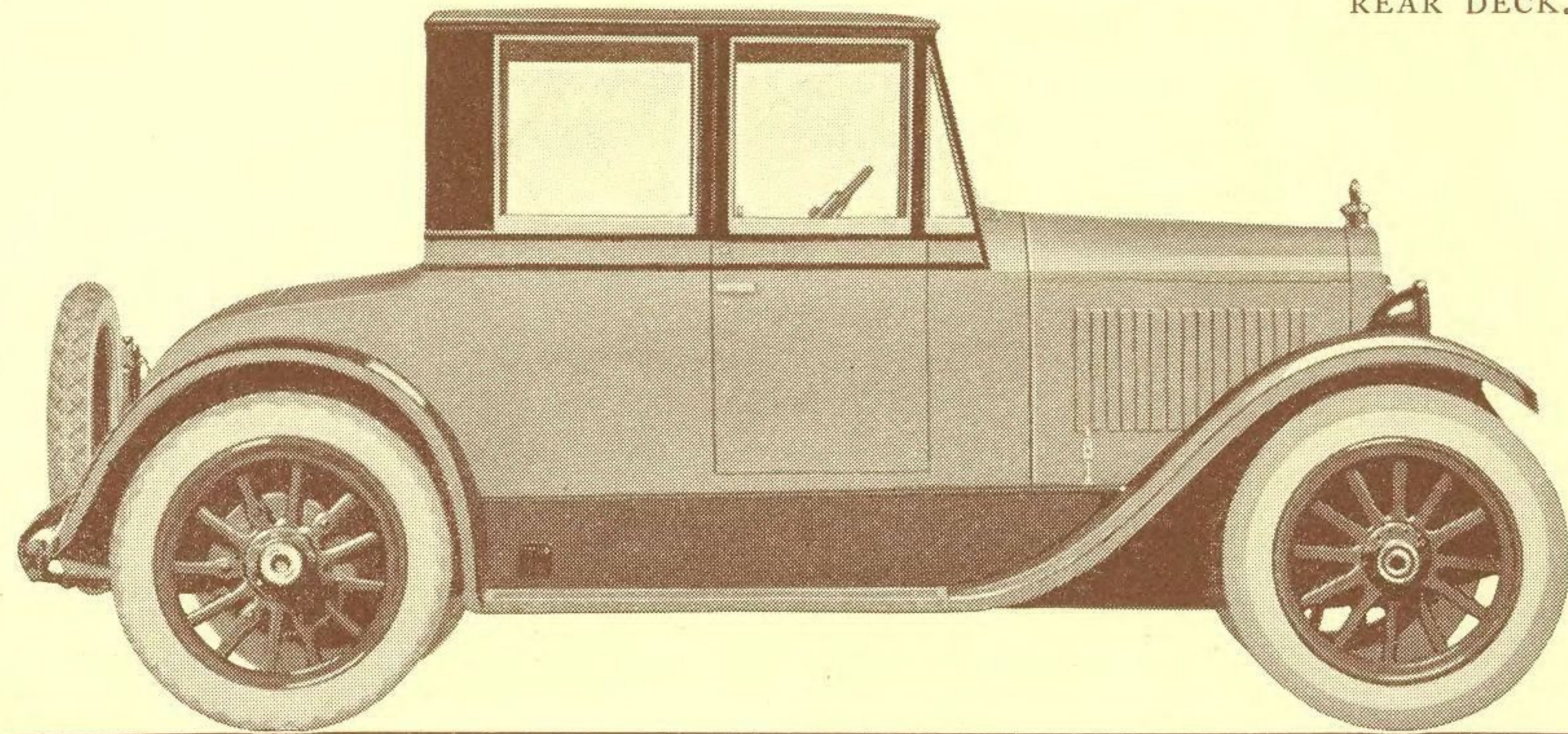
PACKARD SINGLE SIX
SEDAN

SEATS FIVE PASSENGERS COMFORTABLY.
FRONT SEAT 42 INCHES WIDE, UPHOL-
STERED IN LEATHER. REAR SEAT 46
INCHES WIDE, UPHOLSTERED IN RICH
GRAY CLOTH TO HARMONIZE WITH THE
INTERIOR TRIMMING. DOOR WINDOWS
LOWER FLUSH WITH SILLS. COMFORT-
ABLE ARM RESTS AT EACH END OF REAR
SEAT.



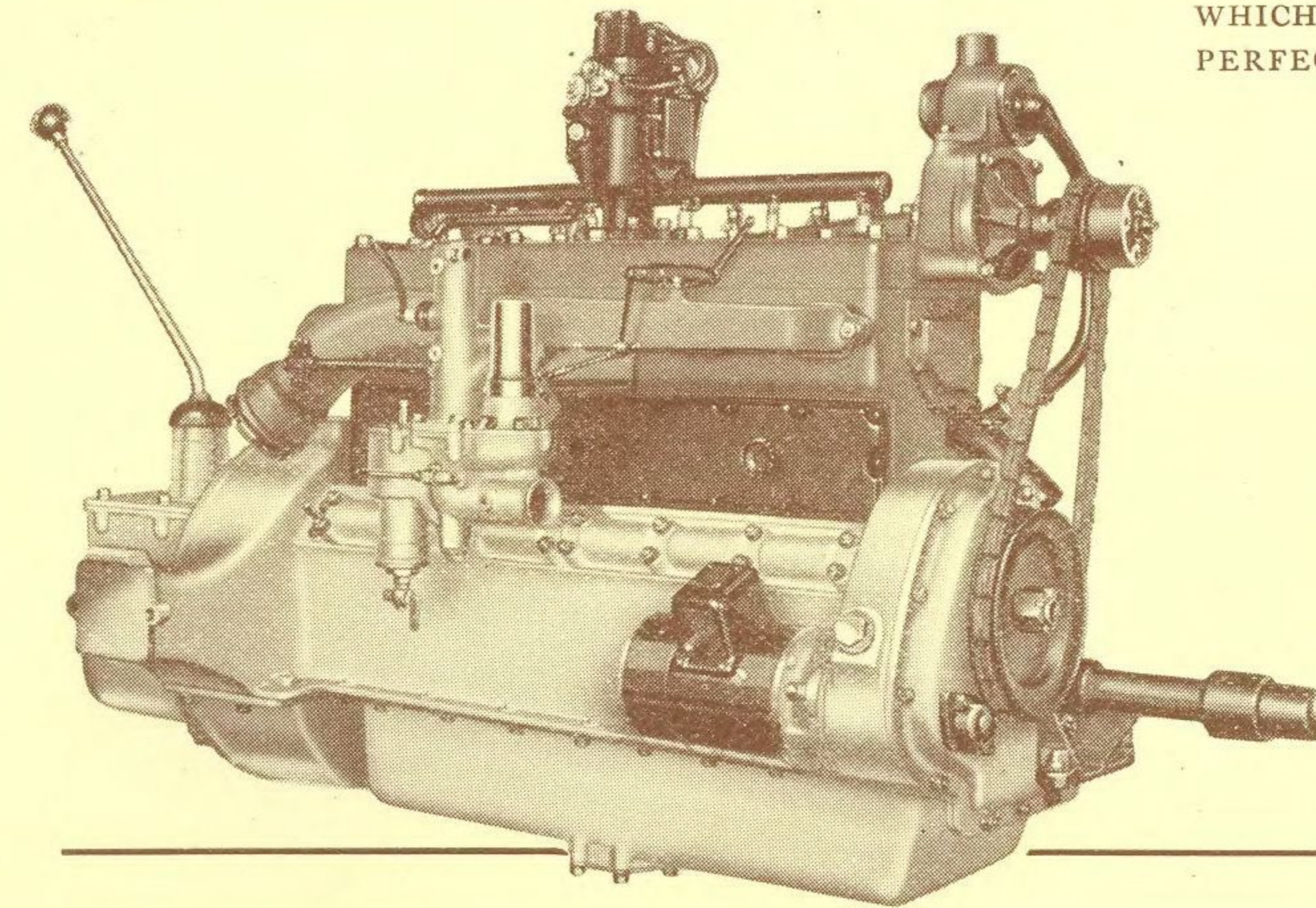
PACKARD SINGLE SIX
COUPÉ

SEATS THREE OR FOUR PASSENGERS COMFORTABLY. DRIVER'S SEAT 18½ INCHES WIDE, UPHOLSTERED IN LEATHER. REAR SEAT 33¼ INCHES WIDE, UPHOLSTERED IN RICH GRAY CLOTH TO HARMONIZE WITH INTERIOR. EXTRA SWINGING SEAT FOR ONE. GENERAL STORAGE SPACE BEHIND DRIVER AND IN REAR DECK.



PACKARD SINGLE SIX
MOTOR

THE CLEAN-CUT APPEARANCE OF THIS MOTOR IS A DIRECT REFLECTION OF THE SKILL AND ASSURANCE WITH WHICH IT WAS DESIGNED. ONLY TWO ADVANTAGES IN THIS MOTOR ARE UNCONVENTIONAL—FIRST, THE HIGH DEGREE TO WHICH KNOWN PRINCIPLES HAVE BEEN PERFECTED; SECOND, THE FUELIZER.



SPECIFICATIONS

MOTOR—L-head type, 7 bearing crank shaft, 6 cylinders; bore $3\frac{3}{8}$ " , stroke $4\frac{1}{2}$ " .

FUELIZER—Simple device to insure quick starting in cold weather, to reduce carbon, to save oil from dilution.

HORSEPOWER—27.34 S. A. E. rating.

IGNITION—Generator, battery and Packard-Delco distributor.

FRAME—Pressed steel, 7" deep, rigid torsion tubes at front and rear, and cross channels, prevent frame weave.

WHEEL BASE—116" .

SPRINGS—Semi-elliptic, front 38" long and 2" wide. Rear, 54" long, and $2\frac{1}{4}$ " wide.

LUBRICATION—Pressure feed, 20 to 25 pounds for normal running, increasing with power requirements.

CLUTCH—Multiple disc, dry plate. Four driving discs.

TRANSMISSION—Three speed forward, and one reverse, selective type.

BRAKES—Internal emergency and external service brakes on 14" drums.

TREAD—56" .

STARTING SYSTEM—Separate starting motor, special Packard-Atwater Kent independent of generator.

LIGHTING SYSTEM—Head lights, auxiliary driving lights, instrument board, and rear light. Current for lighting supplied to battery by special Packard-Atwater Kent generator. Six volts.

COOLING SYSTEM—Capacity $4\frac{1}{2}$ gallons with automatic thermostat regulating temperature of water. Steel fan.

TURNING RADIUS—20' 9" .

PACKARD MOTOR CAR COMPANY, *Detroit*