

OLDSMOBILE SIX

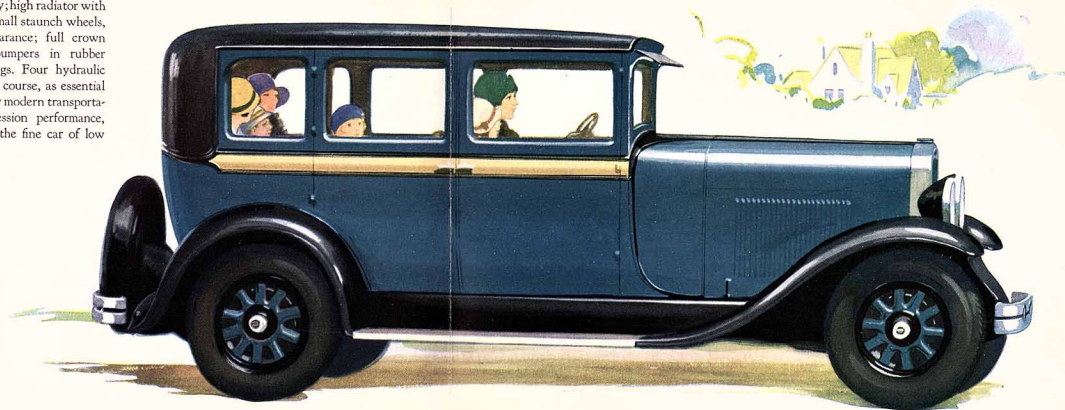


Four-door Sedan

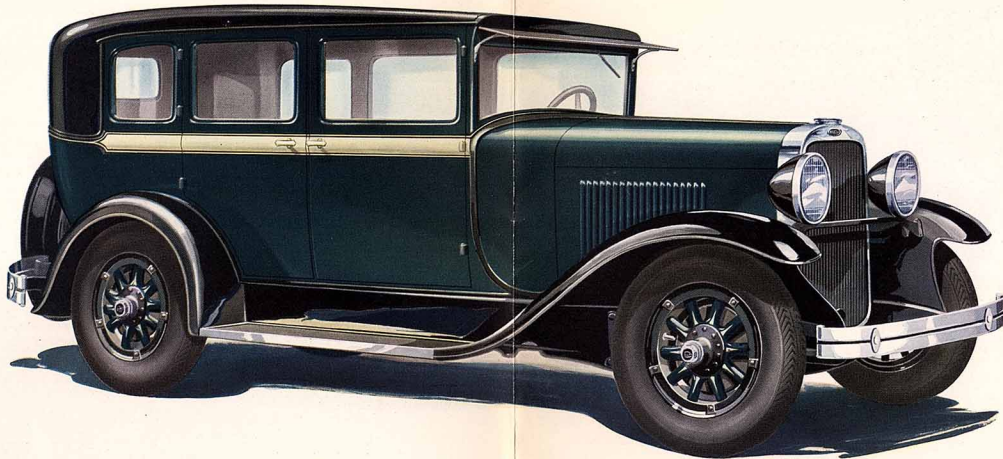


Here is the popular all-purpose family model, but smart, stylish, individual. Graceful Fisher body; high radiator with vertical shutters. Small staunch wheels, handsome in appearance; full crown fenders; inbuilt bumpers in rubber cushioned mountings. Four hydraulic shock absorbers, of course, as essential equipment for really modern transportation. High compression performance, too. In all points, the fine car of low price.

OLDSMOBILE SIX
*Four-door
Sedan*



YOU CAN BUY A BIGGER CAR—BUT NOT A BETTER CAR



Two years ahead in smart appearance—in high compression performance ability—in advanced design of chassis and body

To glance at this Oldsmobile model is to admire it. Examine its construction and you must respect it. Drive it, and you will acclaim it an outstanding motor car value.

It is beautiful to the eye—beautiful with that voguish smartness so popular today, with low lines, graceful proportions, hood saddle, and belt panels. It introduces at a low price, that style which characterizes the finest cars of the moment—and expresses that style with a dash and vigor all its own.

It is a fine car, above all, in performance, its chassis proved by more than a million miles of testing. It is new, larger, more powerful—full 55 horsepower. It accelerates from 5 to 25 miles an hour in $8\frac{1}{2}$ seconds, smoothly, quietly as the steady, stageless pick-up of an electric motor. It delights you with high compression performance from any standard

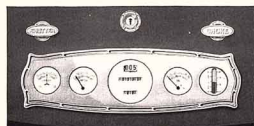
grade of fuel—with complete insulation against vibration and shock—with the maximum smoothness of a four-bearing crankshaft, the one design which best fits a six-cylinder engine—with the refreshing ease and security of a new steering gear highly developed for effortless efficiency—with the surety of Oldsmobile's exclusive type of four-wheel brakes—with the superb riding comfort of a complete equipment of four hydraulic shock absorbers.

Modern artist-engineers created its voguish Fisher-built body, in which outward smartness, inward comfort, and structural strength are ably combined. The body is of stable, long-lived composite construction with steel reinforcing wood and wood reinforcing steel.

Ride in this car today. Drive it. Feel its smoothness, its power, its quiet obedience—its fineness, its value.



The Fine Car of Low Cost



Instruments are individually and indirectly lighted on a graceful silver etched panel, handsomely framed under a single glass



This emblem, insignia of the finest motor car coachcraft, seals every Oldsmobile closed body



Narrow rimmed, finely corrugated, the black steering wheel is smart and strong



Open the wide door to appreciate the degree of fine car charm Oldsmobile has here provided

New in its Voguish Charm

The skill of able artist-engineers is revealed in every detail of the styling of this new and larger Oldsmobile, creating a car of fleet grace, refreshing riding comfort, and solid worth. The Body by Fisher is voguishly smart outside and in; roomy and comfortable; distinctively appointed. A few items of its incidental equipment are here noted. Others will immediately appear as you examine the car on the salesroom floor, or drive it on a trial ride.



Bumpers are of special design with broad bars, one-piece construction, and rubber cushioned mounting



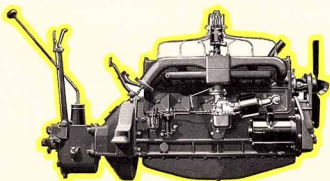
Hydraulic shock absorbers on all springs—a genuine fine car comfort feature



A graceful unit with all wiring concealed includes license bracket, rear light, and traffic stop light

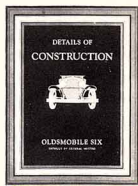
YOU CAN BUY A BIGGER CAR—BUT NOT A BETTER CAR

Some Reasons why Oldsmobile is the Fine Car of Low Price

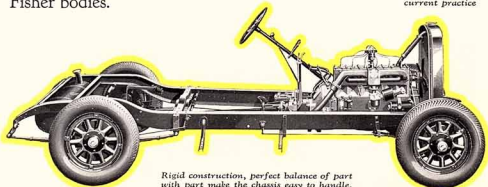


The six-cylinder engine has high compression performance, crankcase ventilation, fuel pump, controlled cooling, improved pressure lubrication

COMPLETE specifications of the new Oldsmobile Six abound with advanced features of demonstrated worth, newly proved in more than a million miles of testing. Six-cylinder, L-head engine develops 55 horsepower. Scientifically designed combustion chambers give high compression performance on any fuel you select. Four main bearings. Oil filter and crankcase ventilation. Radiator shutters manually operated. Hydraulic shock absorber on every spring. Wheelbase 113½ inches. Staunch, handsome Fisher bodies.



For the complete mechanical story of the fine car of low price, ask your Oldsmobile dealer for your copy of "Details of Construction." It describes in full the features which, critics declare, put Oldsmobile two years ahead of current practice



Rigid construction, perfect balance of part with part make the chassis easy to handle, powerful, smooth running, long-lived

OLDSMOBILE

PRODUCT OF GENERAL MOTORS

LANSING, MICHIGAN

The Olds Motor Works reserves the right to make changes in prices and specifications or add improvements at any time without incurring any obligation to install same on cars previously sold. Spare tire extra