

P A C K A R D F O R 1 9 3 8

The 12 - The Super 8



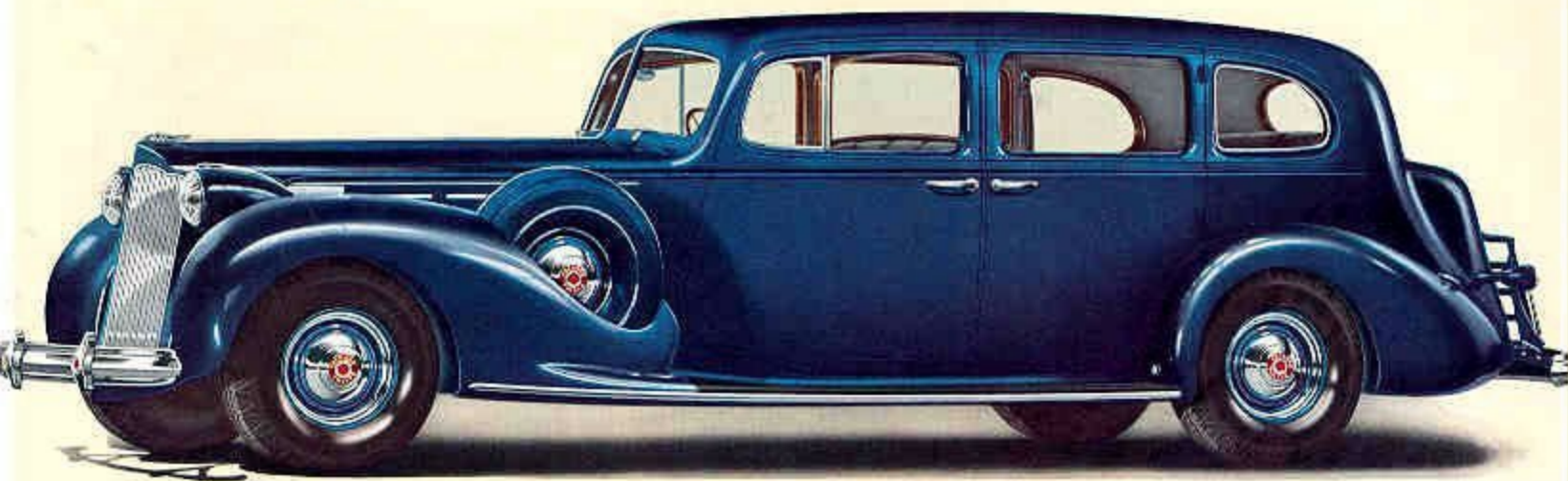
The TOURING SEDAN for Seven Passengers

WHEEL BASE - 139 INCHES



The TOURING SEDAN for Five Passengers

WHEEL BASE - 124 INCHES



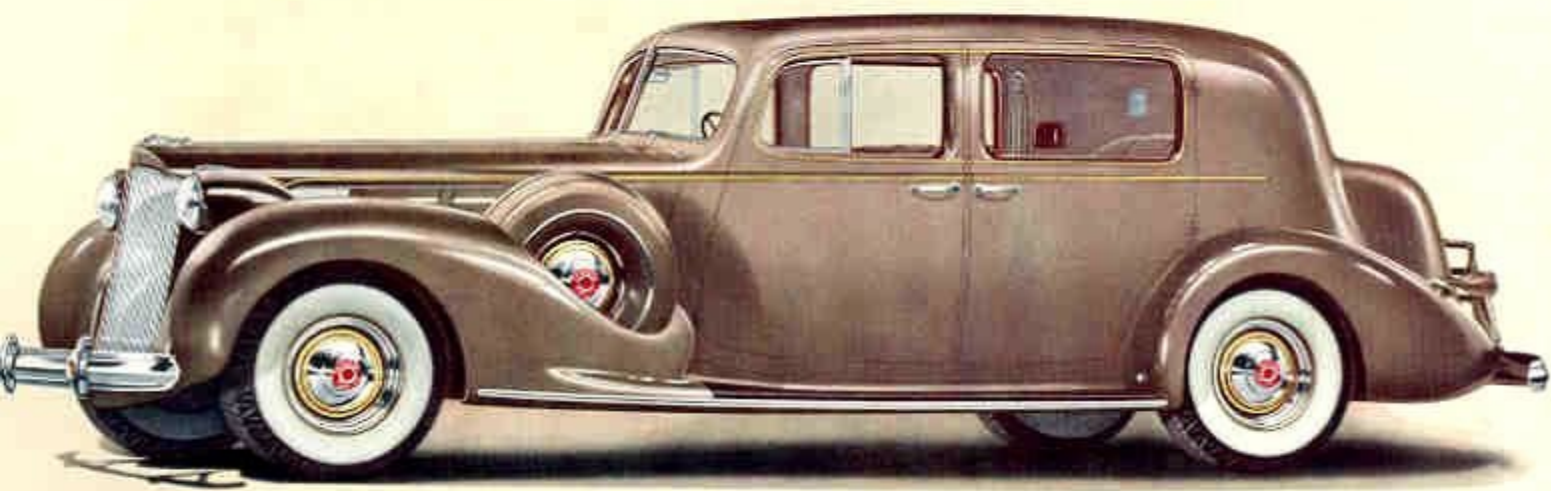
The TOURING LIMOUSINE for Seven Passengers

WHEEL BASE - 139 INCHES



The FORMAL SEDAN for Six Passengers

WHEEL BASE - 134 INCHES



The CLUB SEDAN for Five Passengers

WHEEL BASE - 134 INCHES



The COUPE for Five Passengers

WHEEL BASE - 134 INCHES



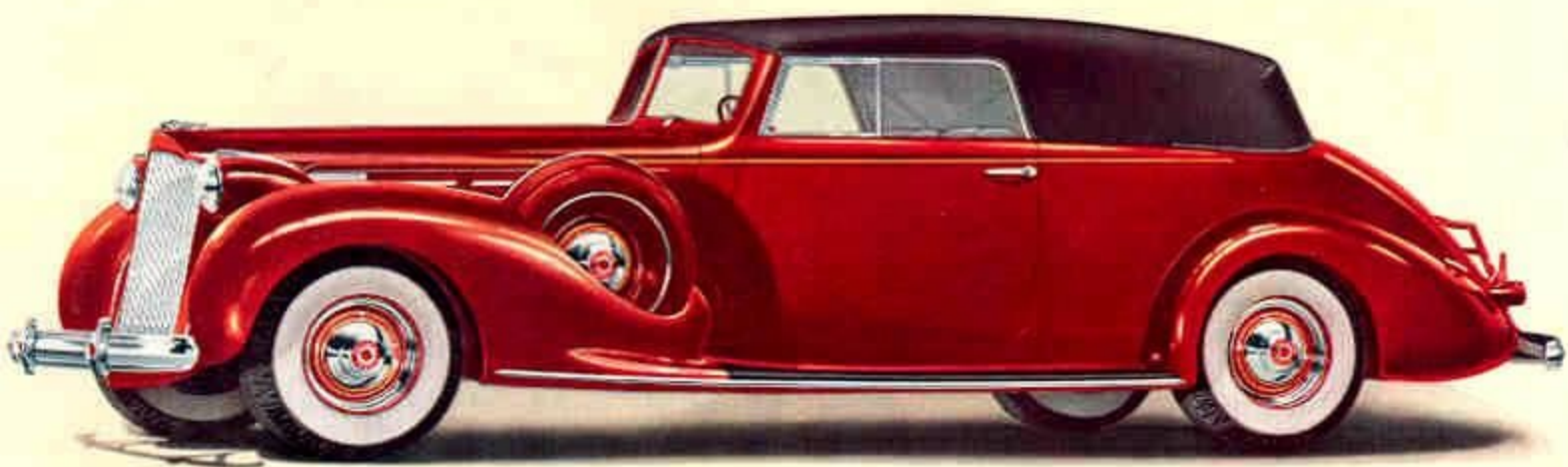
The COUPE for Two or Four Passengers

WHEEL BASE - 134 INCHES



The COUPE-ROADSTER for Two or Four Passengers

WHEEL BASE - 134 INCHES

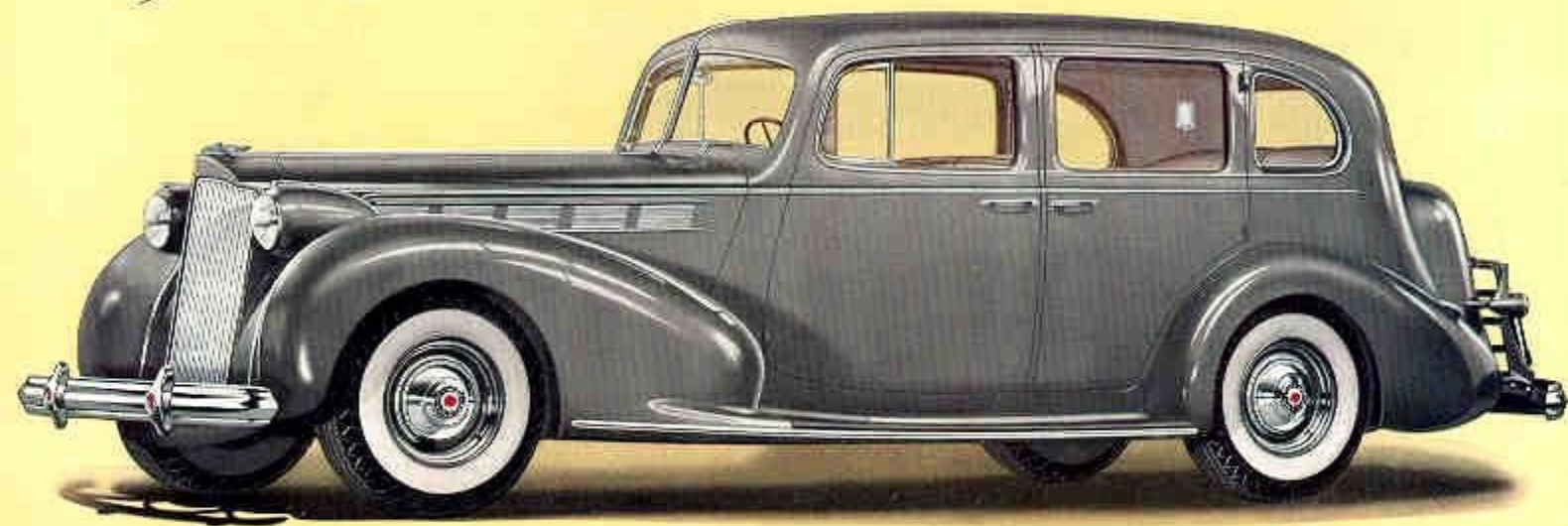


The CONVERTIBLE VICTORIA for Five Passengers
WHEEL BASE - 131 INCHES



The CONVERTIBLE SEDAN for Five Passengers
WHEEL BASE - 130 INCHES

Super 8
○○○○○○○○○○



The **TOURING SEDAN** for Five Passengers

WHEEL BASE - 127 INCHES

Super 8
○○○○○○○○○○



The **COUPE** for Two or Four Passengers

WHEEL BASE - 124 INCHES

Super
oooooooo



The COUPE-ROADSTER for Two or Four Passengers

WHEEL BASE - 134 INCHES

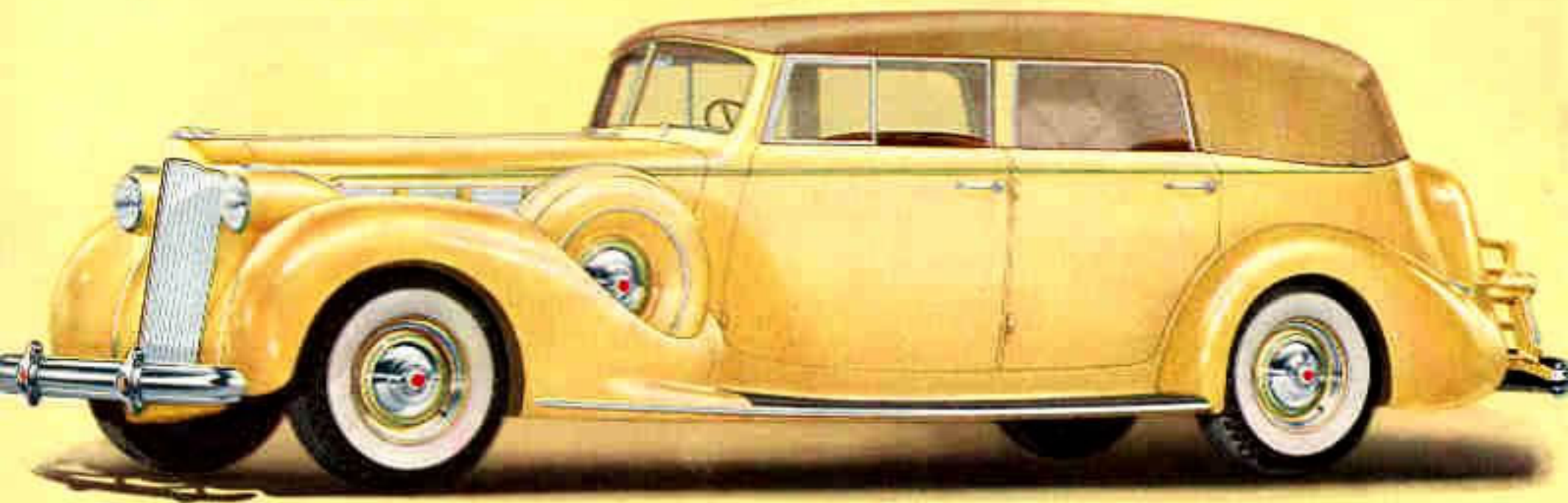
Super
oooooooo



The CONVERTIBLE VICTORIA for Five Passengers

WHEEL BASE - 134 INCHES

Super
8

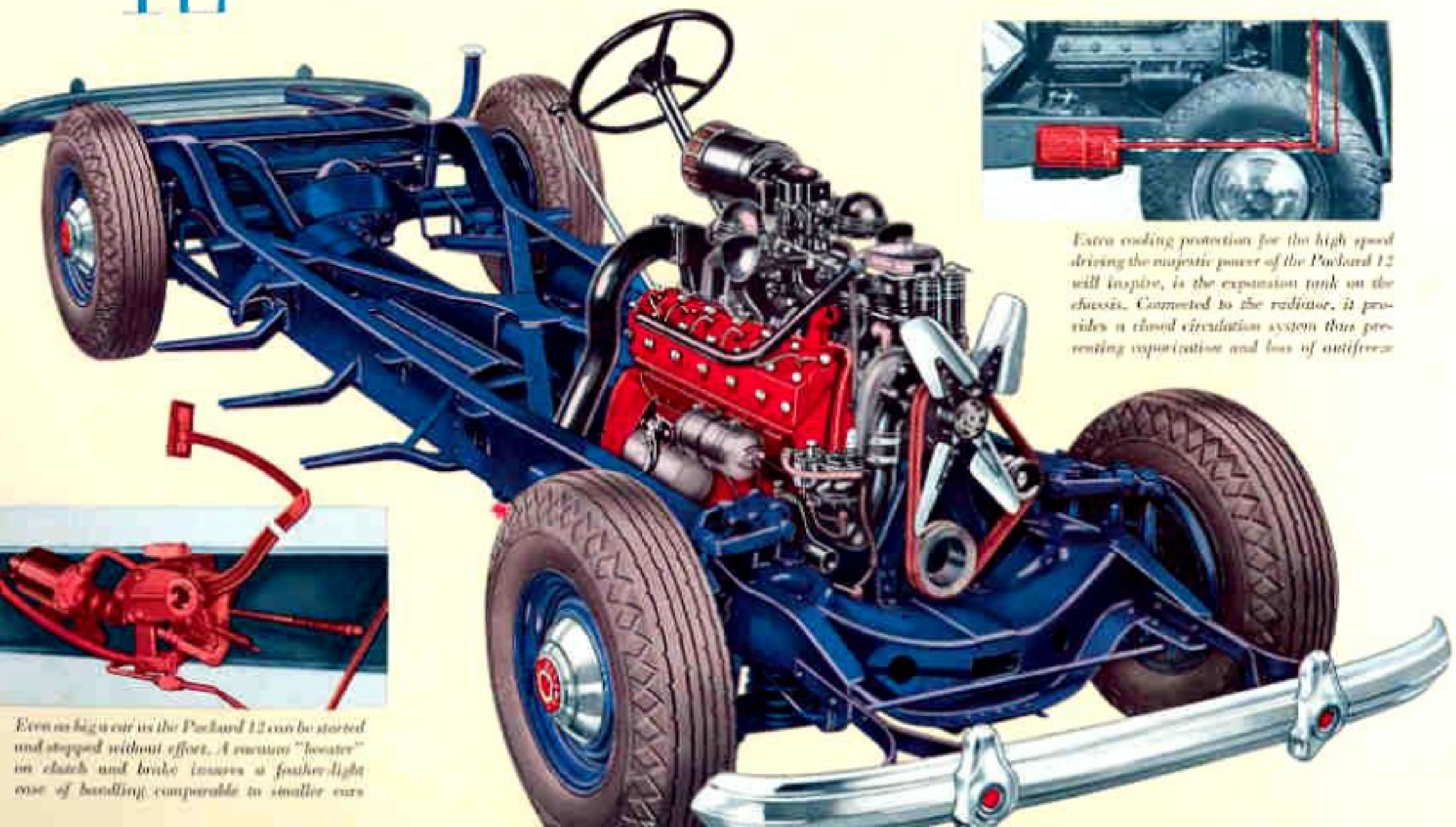


The CONVERTIBLE SEDAN for Five Passengers

WHEEL BASE • 130 INCHES

THE 12 CHASSIS

Just one indication of the way the Packard 12 chassis is engineered to the specialized needs of this mighty motor car, is the size of its tires. These are 16 x 31.25, largest used on any American production car. This massive base is built in two wheelbase lengths—139½" to accommodate three body types, and 154½" on which to mount seven others. Throughout this sturdy base, keynote of the entire Packard engineering policy, is many an example of design ingenuity that will delight the one who admires the finest expression of quality mechanics.



Extra cooling protection for the high speed driving the majestic power of the Packard 12 will inspire, is the expansion tank on the chassis. Connected to the radiator, it provides a closed circulation system thus preventing vaporization and loss of antifreeze.



Even in high car as the Packard 12 can be started and stopped without effort. A vacuum "booster" on clutch and brake insures a feather-light ease of handling comparable to smaller cars.