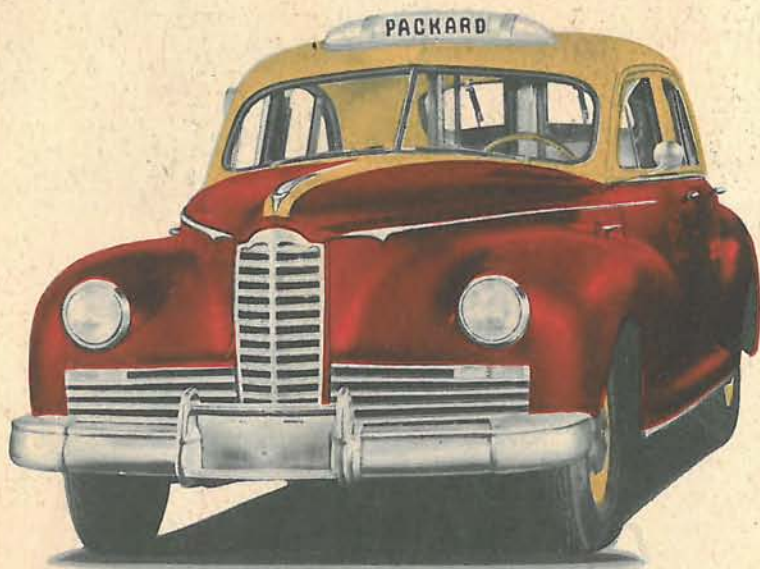


THE 1-2-3 OF WHAT THEY SEE **in the** **PACKARD** *Clipper* **CAB**



1. PASSENGERS SEE ALL THE LUXURY OF A PRIVATELY OWNED PACKARD!

It's **tops** in bookings, thanks to its eye-catching Clipper styling, its full sedan roominess and limousine privacy.

As you see in these photos, the interior is smartly upholstered in genuine leather. Front seatback and upper and lower door panels are trimmed with scuff-proof, easy-to-clean plastic.

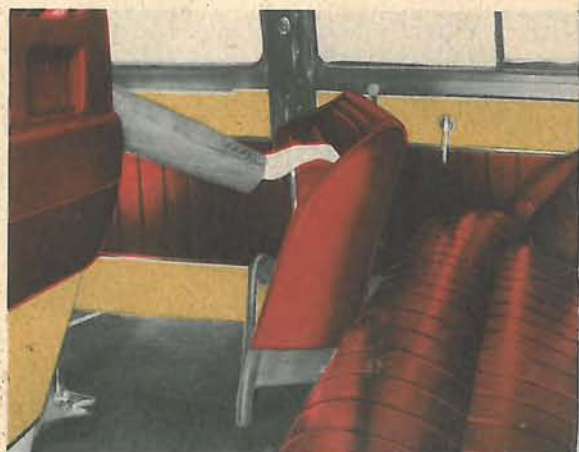
And there's something else that attracts immediate attention—a brand-new seat idea.*



Left: It's a rigid two-passenger seat—wider than a bus seat. It provides generous knee room for rear seat riders.

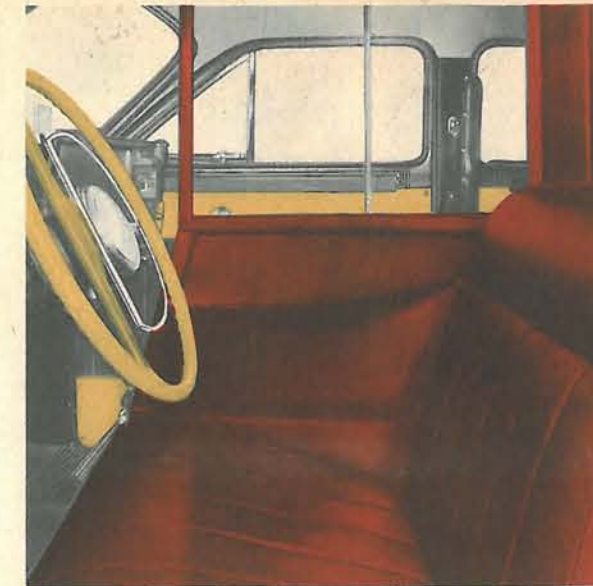
Right: Two passengers step into it through the right front door, or it can be swung back for left-side loading.

*For cities where a partition is not required by law, a Clipper Cab with conventional sedan seating is available. See center page.





2. DRIVERS SEE PLEASURE CAR HANDLING EASE



Arm Chair Comfort is here with luxury cushion, and natural-support seatback. Steering and shifting are feather light. Front seat latch is at your side. To make change, you simply slide back the clear plastic panel. Windshield wipers are two-speed electric.

Convenient reading light is at your shoulder. Radio and underseat heater are popular extras. Note, too, the special footrail for front seat passengers, and the safety pad on instrument board.



Quick Turning, Easy Parking. Wheelbase of the new Clipper Cab is 120 inches, turning radius only 21 feet. Parking is easy—and there's a back-up buzzer

available as an accessory to protect pedestrians against injury and to promote your peace-of-mind. It's the handiest cab of its size you ever took through city traffic.



Side-Guard Bumpers and high bumper guards cut down on bumper hooking, and protect fenders better. Clipper styling is unmistakably Packard.



Here's Abundant Room, over an easier-to-handle 120" wheelbase. Crash pads, on the instrument board and the front seatback, are new safety features.



Gas Tank Signal speeds filling, ends spillage. When its whistle stops, tank is filled to proper level with allowance for gas expansion.



Power-Operated Back Window, for cleaner, better ventilation, has control button on dash. Window can be opened to any position. Red signal light on dash warns driver if any passenger doors are open.

PACKARD
Clipper
CAB



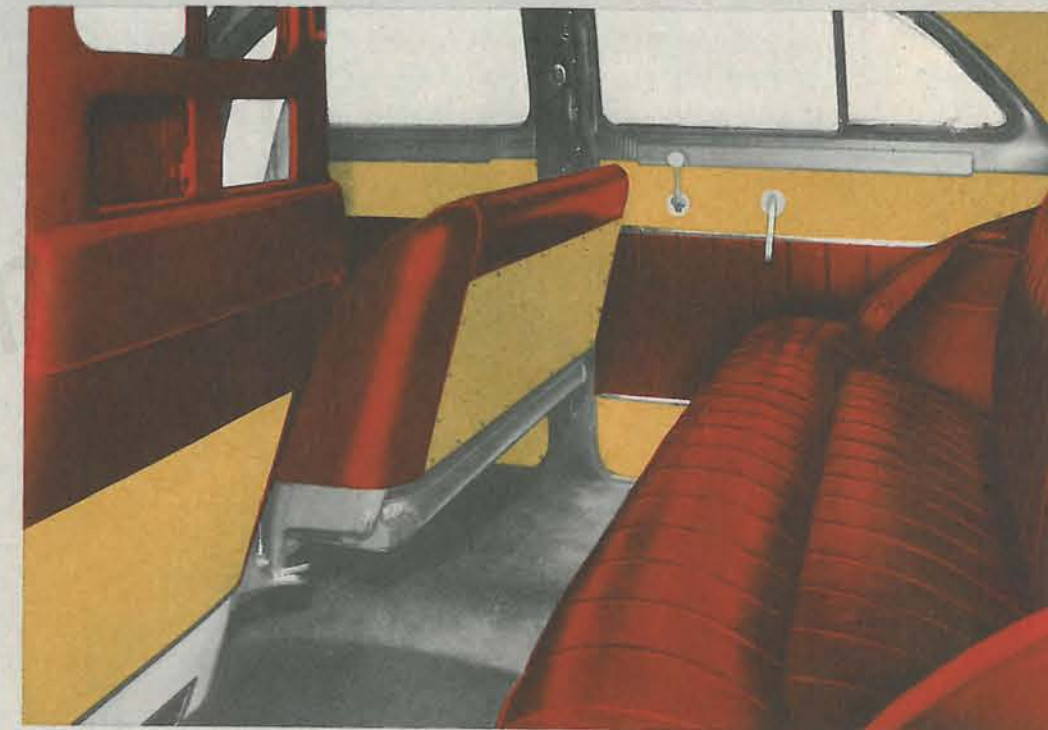
3. OPERATORS SEE MORE PAID MILES, LESS TIME IN THE SHOP



More and Better Bookings are a proved, long-familiar experience with operators of Packard cabs. Distinctive Clipper styling now heightens Packard taxi appeal. No question about its ability to get business now. No question about its high re-sale value later.



Upkeep Cutters—these are typical: Windows have metal frames; door latch is special for heavy-duty cab work; door check is husky—but if broken can be replaced in about 10 minutes, without welding. Doors have no-slam rotary latches.



Beauty That Stands Up—it's a real taxi interior. Upholstery is genuine leather, over cushions built for long service. Plastic trim on doors and front seatback is scuff-proof, easy to keep clean. Every detail of design contributes to more paid mileage, lower upkeep cost.

- Because It's Taxi-Engineered!

SPECIAL CRANKCASE VENTILATION

Taxi-engineered, brand-new on the Packard Clipper Cab. Cuts

HEAVY DUTY BRAKES

Rear brakes are same as used on the big Packard Super Clipper (12 x 2). Really s-t-r-e-t-c-h the time between relining jobs.

sludge formation to a bare minimum at all speeds.

NEW OIL-SAVER RINGS

Revolutionary new non-clogging oil control rings mean better drain-back of oil in cylinders, better lubrication with lower oil consumption.

THRIFTY "6" POWER

A big, 105-HP Packard Six with new long-life, upkeep-cutting features. Brings you special taxi engineering in a precision-built power plant. See back cover for condensed specifications.

HEAVY DUTY GENERATOR

Extra-capacity generator and voltage regulator keep battery up, even at slow speeds.

6-PLY TIRES

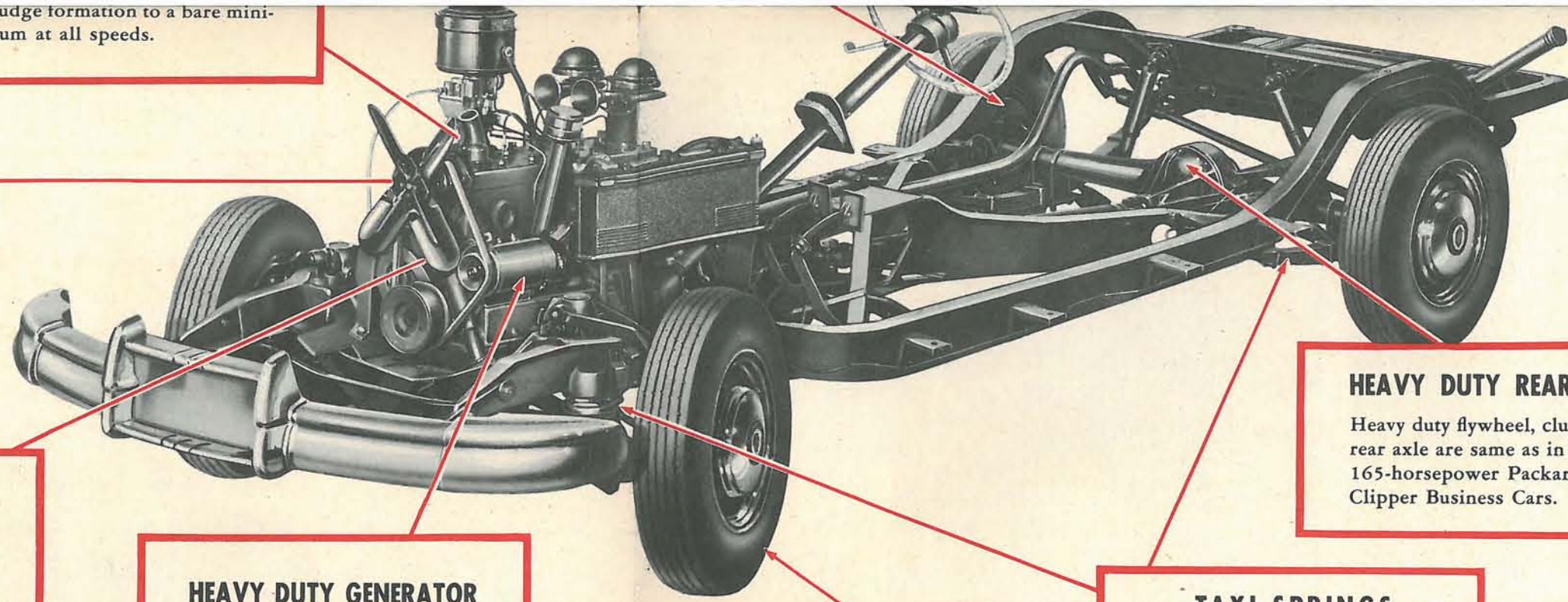
Vital to thrifty cab operation, so we make them standard equipment. Heavy duty. Size 7.00 x 15.

TAXI SPRINGS

Taxi engineering includes springs with the proper frequency for this special-purpose work, thus adding to Packard's unrivaled comfort.

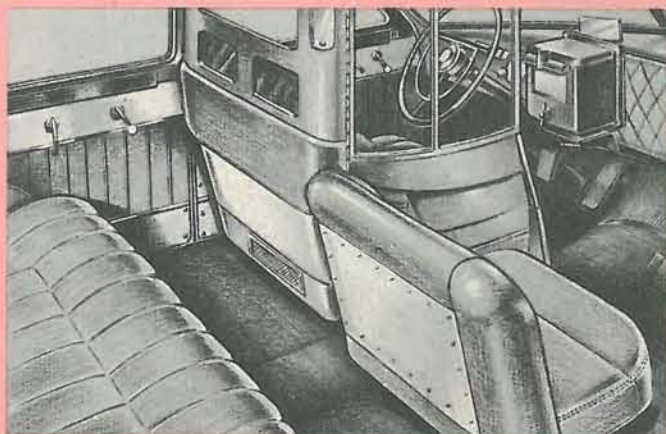
HEAVY DUTY REAR AXLE

Heavy duty flywheel, clutch, and rear axle are same as in the big, 165-horsepower Packard Super Clipper Business Cars.



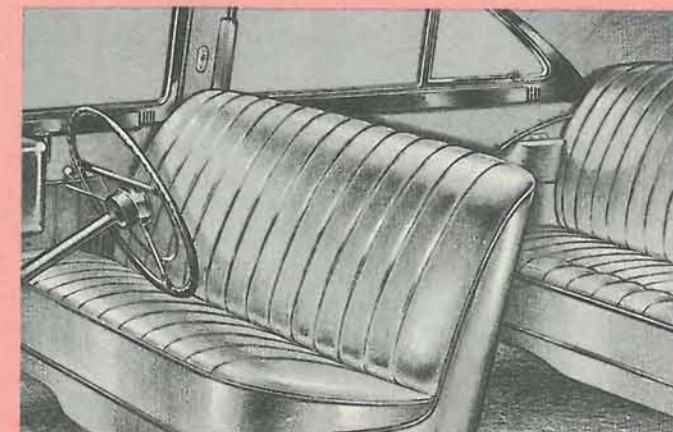
Your choice of two new types

THE PARTITION-TYPE CLIPPER CAB—as pictured in this folder

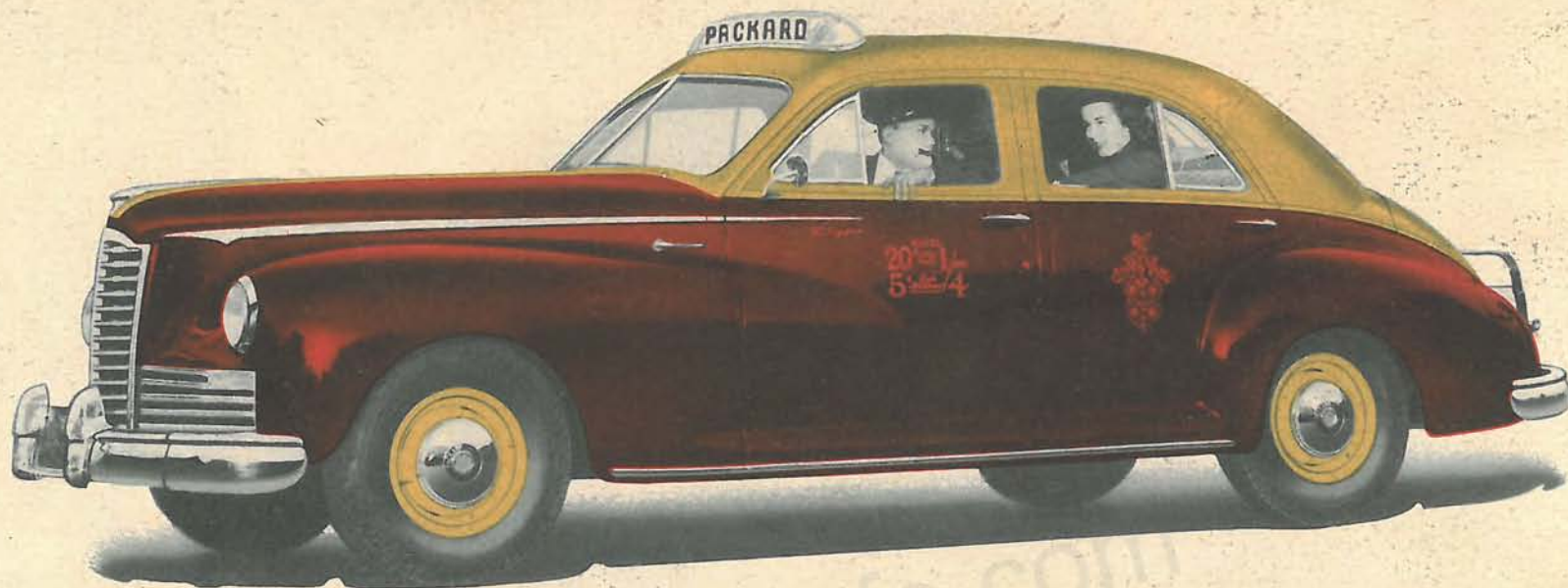


This type body separates driver from passengers, and conforms with most large-city ordinances. It is the ultimate in taxi beauty. But the Clipper Cab is also available with conventional sedan seating, as shown at the right.

A CLIPPER CAB WITH CONVENTIONAL SEDAN SEATING



Same genuine leather trim and plastic panels, same taxi-engineering—but in this type body the partition and separate front seats are replaced by a conventional sedan front seat. Its price is lower than the partition-type cab.



Condensed Specifications

Engine: L-Head, 6 cylinders, 105 B.H.P. @ 3600 RPM. Removable precision type main and connecting rod bearings.

Engine Lubrication: Full pressure lubrication to all main, connecting rod, camshaft and piston pin bearings, also to valve tappets.

Fuel System: Single tube down-draft carburetor, automatic choke, automatic heat control, idling control, pump with filter.

Clutch: Special semi-centrifugal single dry plate type 11 inch diameter. Ball throw-out bearing, permanently lubricated.

Transmission: Synchronized, carburized, helically cut gears, 9 ball and roller bearings.

Frame: X-member type frame, box section side rails.

Brakes: Packard Servo-Hydraulic, oversize self-energizing type service brakes. Mechanical handbrake operating rear wheel brake shoes.

Steering System: Worm and three tooth roller type gear, mounted on double row needle bearings and two tapered roller bearings, 21 ft. turning radius.

Wheelbase: 120 inches.

Bodies: All steel body, safety glass throughout. Genuine leather upholstery, partition or sedan type seating.

Standard Equipment: Twin horns, driver's sun visor, double two-speed electric windshield wipers, door rear-view mirror, special outside bonnet lock, power operated rear window, rear compartment reading light, two combination stop and tail lights, new side-guard bumpers and guards front and rear.

PACKARD *Clipper* **CAB**

ASK THE MAN WHO OWNS ONE

PACKARD MOTOR CAR COMPANY • DETROIT 32, MICHIGAN