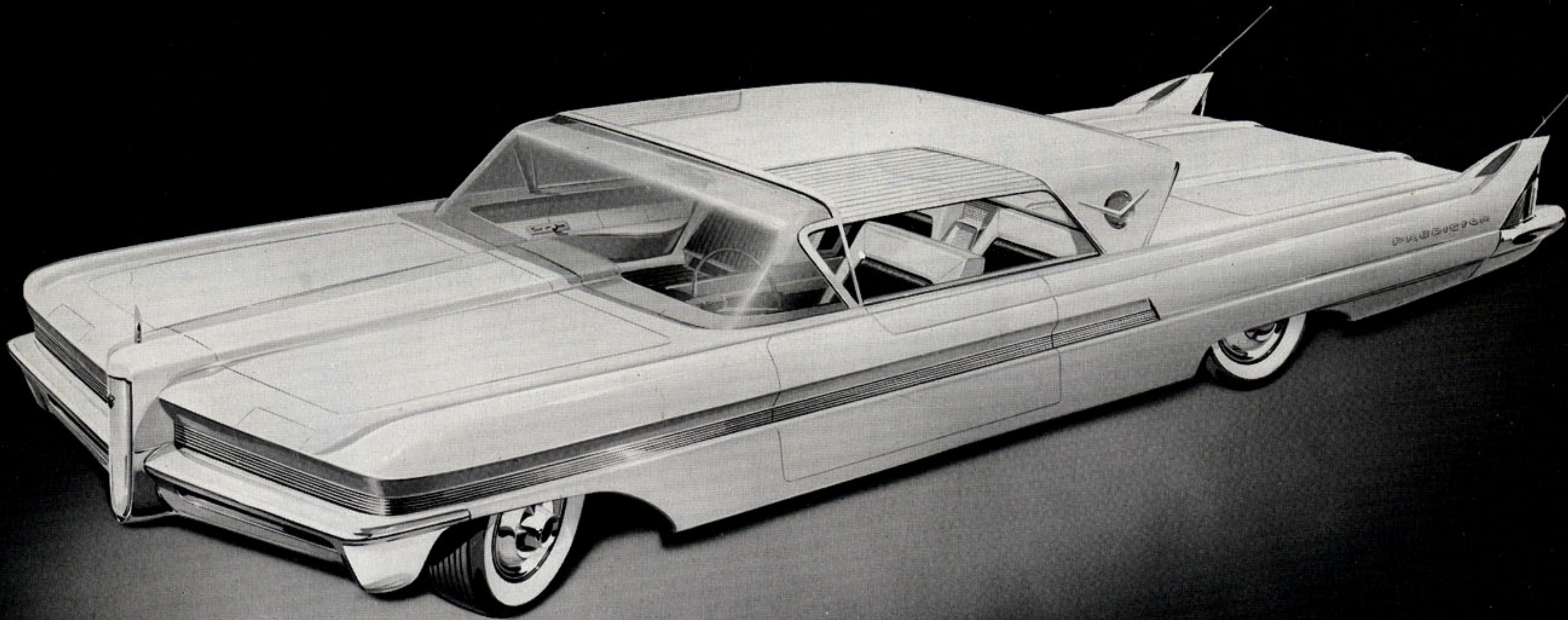




Presenting Packard's Creative Styling and Engineering Promise to You

THE PREDICTOR



The **PREDICTOR'S** Promise to You

IN ENGINEERING

IN STYLING

When you open the *Predictor's* doors, sliding roof panels over the doors automatically and silently roll back for easy exit and entrance. The roof panels can also be opened for ventilation while the doors remain closed.

Swiveling front seats add to the ease of entering or leaving this all-new car.

The wrap around, wrap over windshield provides the ultimate in visibility.

A hooded Packard Balboa-type rear window is fully retractable providing maximum ventilation.

Four headlights—two especially designed for country driving, two especially for city driving—are recessed behind power-operated hood openings.

Jet pods in the rear house the back-up lights and the four exhaust ports.

Powered by an advanced Packard V-8 engine rated at over 300 horsepower.

Electronic Push-buttons control the powerful Ultramatic transmission.

Rear deck lid raises and lowers hydraulically for your convenience.

Pedestal for all major operating controls is located between the two front seats.

A control unit for operation of roof panels, radio antennas and courtesy lights is located in the rooftop convenient to both driver and passenger.

Of course, the *Predictor* brings you Packard's famous Torsion-Level Ride, like so many other advanced features already available on Packard-built cars.

The sculptured-in-steel Packard Caribbean design is typified by crispness, sharply defined forms and smooth-flowing lines.

A contemporary version of the world-famed classic Packard grille with a floating vertical blade that is both a shock absorber and bumper guard.

Individual contoured seat cushions and back rests that are reversible, with natural pliable leather on one side and beautiful fabric on the other.

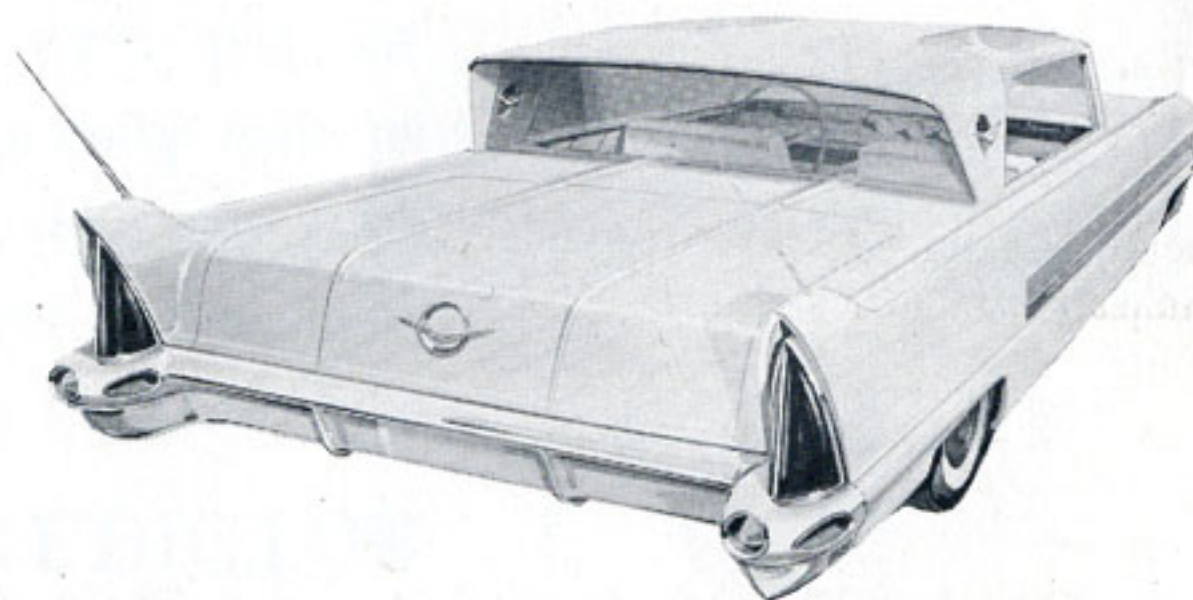
Satin finished aluminum mouldings that begin at the base of the grille and flow smoothly around the body.

Beautiful opalescent pearl body enamel that assumes the color of the light playing on it.

Crisp molded hood lines that flow unbroken from the top of the grille terminating at the instrument panel.

New trend-setting proportions. The *Predictor* is 222 inches long by four and a half feet *low*.

A circular window to the rear of the passenger compartment combines a courtesy light with a jeweled escutcheon.





PACKARD'S BRILLIANT PREDICTOR . . .

an exciting promise of *all* the great things to come from Packard's Creative Styling and Engineering. Sculptured in steel and shimmering color with crisp flowing lines that speak of Packard's touch with the future. Accented with trend-setting luxury features. Notice the PREDICTOR'S exciting promise to you.

Then see how much of its promise Packard brings you today.



PACKARD DIVISION • STUDEBAKER-PACKARD CORPORATION