



The sedan for people
who've outgrown big sedans.



**You can get more out of it than big sedans.
Because you can put more in it.**

The VW Squareback holds almost twice as much as the average big sedan.

It has a huge 24.7 cu. ft. trunk in back. And another 8.1 cu. ft. trunk up front. To let you do things you can't do in other cars.

For instance, when you go on a picnic you can take along more food, more blankets and more whatnots for the kids.

And since all the gear fits inside the

trunks, there's more leg room, elbow room and head room inside for people and pets.

So by the time everyone gets to the picnic grounds, they'll still feel like having a picnic.

Because with all that extra room to move around in, the VW Squareback Sedan will get you there without the cramps and the cranks.

Which in itself is quite comforting to know.



YONDERHILL
ANTIQUES

**It lets you get away with things
you can't get away with in big sedans.**

If some large, rather hard-to-move objects fit into your future plans, chances are they'll fit into the Squareback too.

With the back seats down, it has about twice as much loading space as the biggest big sedan.

Over 42 cu. ft.

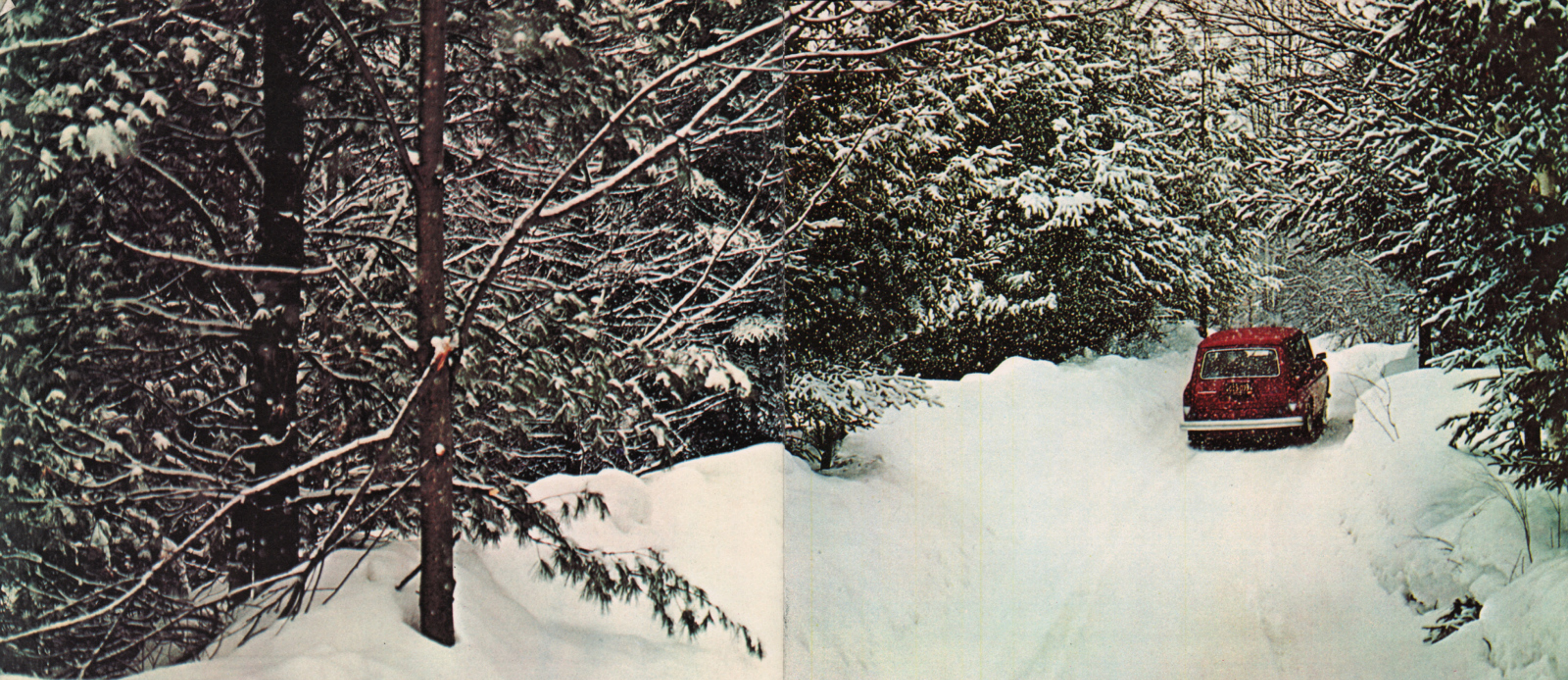
So hard-to-get antiques slide right in. As do TV sets, floor polishers, lawn mow-

ers, go-carts, trunks, desks, and chairs.

To make sure nothing gets chipped or scratched, we covered the floor with a rubber mat. And the sides with cushioned paneling.

And the paneling is covered with vinyl. So it's as easy to clean as the rubber mat.

After all, getting stuck with a big clean-up job isn't getting away with anything.



It goes places big, powerful sedans can't.

The Squareback may not be the most powerful car in the world, but it can put the most powerful cars in the world to shame.

With a 65 hp engine.

It sits back behind the drive wheels. For extra traction. On ice, snow, sand and mud.

And sitting down between the drive wheels, we have a double-jointed rear axle. To help keep both wheels firmly on the ground.

But this doesn't mean that when a wheel hits a bump the whole car goes bump.

Not with our 4-wheel independent

torsion bar suspension for smooth rides over rough roads.

And to bring you to a quick, even stop at the end of the road, there's our dual-braking system. Complete with self-adjusting front-wheel disc brakes.

But before you can stop, comes a small problem: parking.

Which is why when we made the Squareback big inside, we kept it small outside.

It's only 12" longer than the Bug. So it fits into just about any place the Bug does.

And that's just about any place.

A lot of its standard equipment isn't standard in most big sedans.

You can get a lot of impressive trimmings with most any car.

Adjustable bucket seats. Door-to-door carpeting. Electric clock. Electric rear-window de-fogger. Steering-wheel lock. Even individually adjustable hot-and-cold air vents.

But you can't get all these extras with any car without paying extra.

Unless you get a VW Squareback Sedan.

And with them comes something that comes with no other car in the country. No matter how much you pay for it: An electronic fuel injection system.

This sophisticated little system replaces the carburetor and its crude way of doing things.

An electronic brain figures out precisely how much gas the engine needs. And that's all it gets.

You get smoother acceleration. And at the same time you save gas. The Squareback gets about 27 mpg.

So while our fuel injection doesn't cost extra in the first place, it helps save you money in a few other places too.



It's more economical than most economy cars.

About twenty-seven miles to the gallon. Takes pints of oil, not quarts. 4 spark plugs, not 6 or 8. And not a drop of anti-freeze. (No radiator.)

Not bad for a little car. Almost unbelievable for the Squareback.

But don't think it's too good to be true.

The Squareback Sedan has been around for four years. Long enough for a

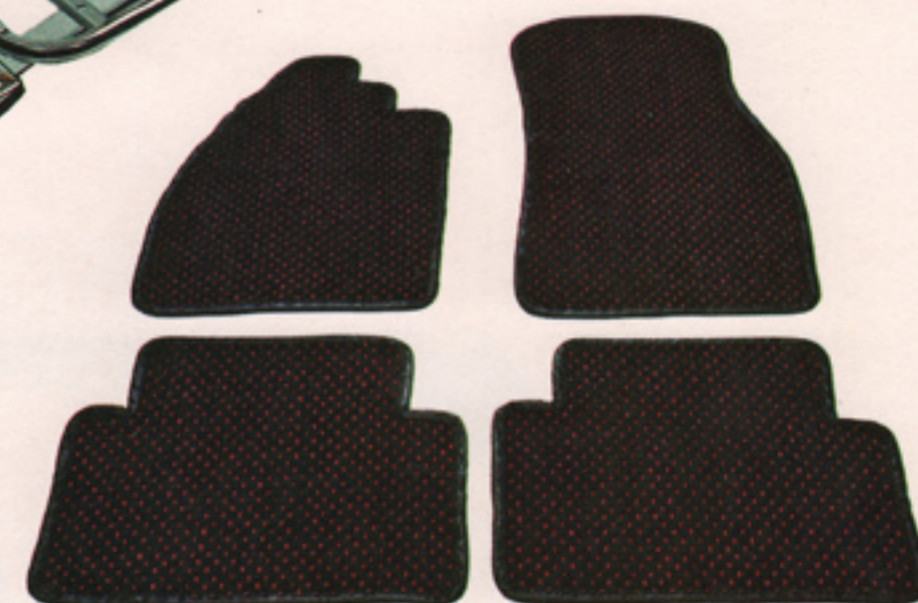
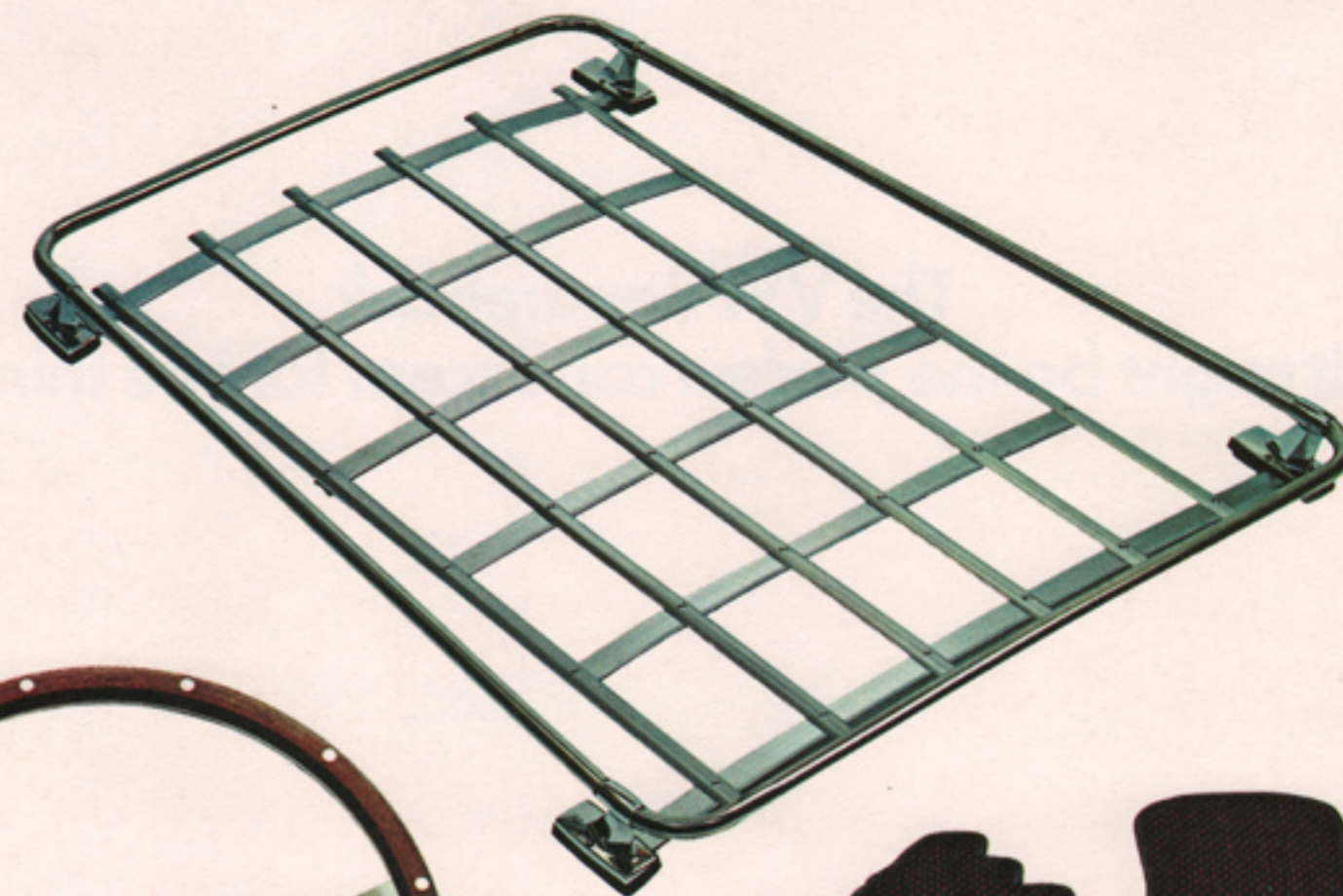
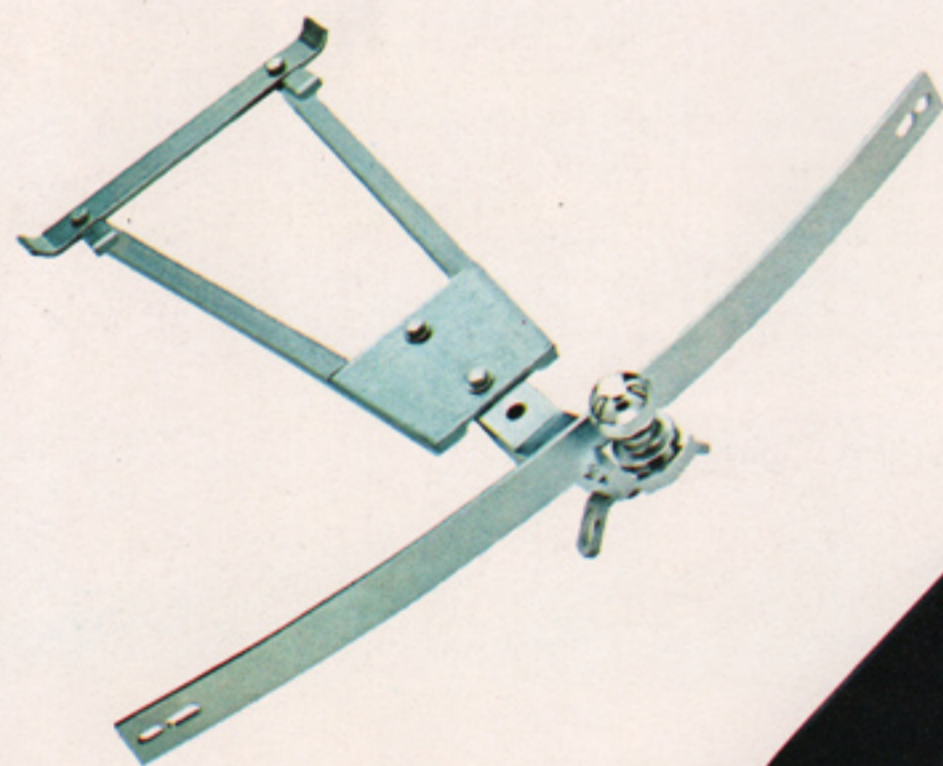
lot of them to have become used cars.

Yet most Squarebacks still belong to their original owners. Who are in no hurry to let them go. Since they were built well to last a long time.

And because they know that even old VWs have high trade-in values.

And that one of the nicest things about owning a VW is selling it.





As good as it is, you can still make it better.

There's not a Squareback made that can't be made better. With VW accessories and optional equipment.

A sunroof makes it sunnier.

Air conditioning, cooler.

Whitewalls, sportier.

Leatherette upholstery, more elegant.

Rubber floor mats, easier to clean.

And a fully automatic transmission, easier to drive. Just put it in position 3. And forget it.

And here's something worth

remembering:

Our automatic is light. And it's economical like a VW.

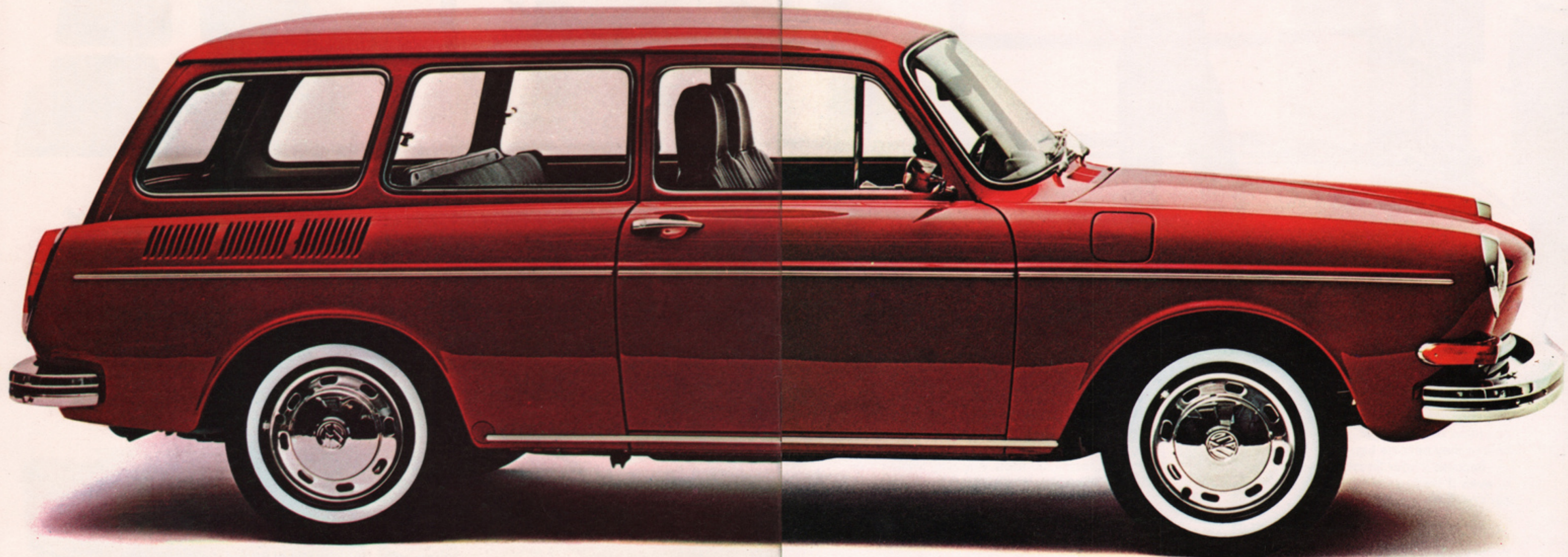
It has fewer moving parts than any other 3-speed automatic. So it's simple. And rugged. Like a VW.

As a matter of fact, every VW accessory is built like a VW. To last.

After all, if we called things that fall apart improvements, what would people think of the cars they're improving?

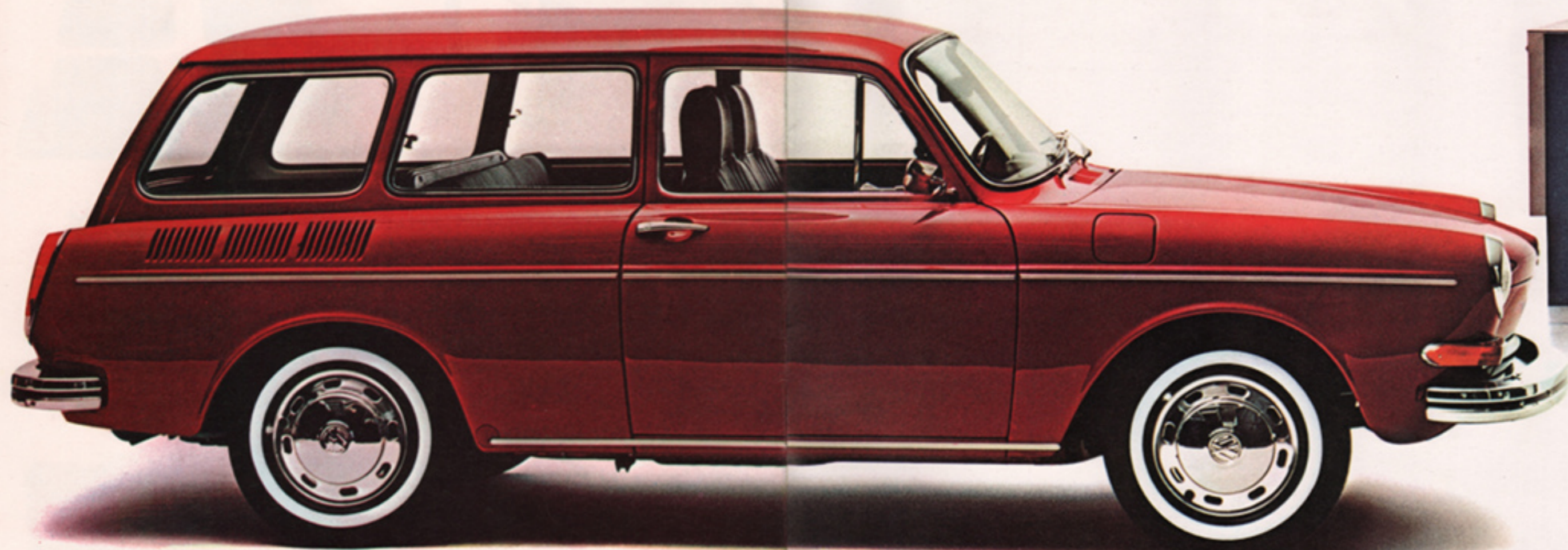


The VW Squareback.
It might be the perfect car, except for one thing.

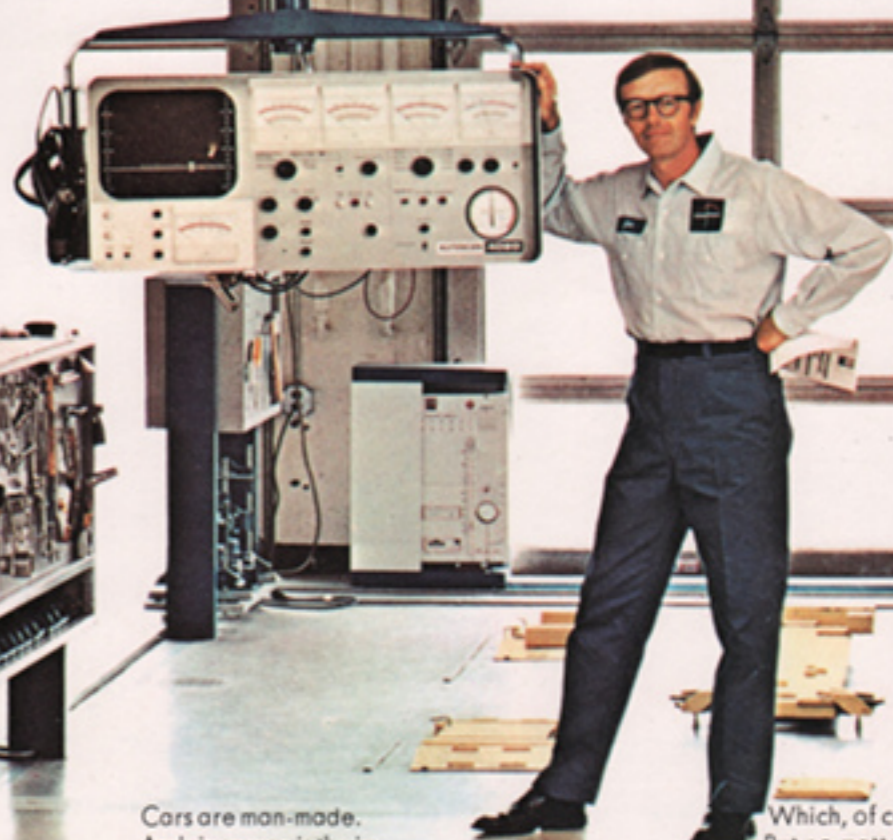


The VW Squareback.
It might be the perfect car, except for one thing.

No car is perfect.



VW-diagnosis



Cars are man-made.

And since man is the imperfect creature he is, cars

are destined to be the imperfect machines they are.

Which is why Volkswagen developed VW Diagnosis. Or, as some people call it, Medi-Car.

A most sophisticated group of mechanical and electrical testing equipment, it can tell our VW diagnosticians just about everything about the condition of every VW. And spot little problems before they become big. And expensive.

Because if your Squareback sedan has bugs in it, even if they're little bugs, they can affect the car's performance.

For example, maybe the compression in one of your cylinders is off by as little as 7%. It doesn't sound like much but it can reduce your gas mileage. And cause your spark plugs to foul.

Luckily, our diagnostic instruments can detect compression deficiencies much lower than that. So VW owners shouldn't have much to worry about.

Which, of course, is the general idea.

But no matter what we find wrong with your Volkswagen, we won't do anything about it.

Not before we tell you what's out of order.

And about how much it'll cost to put it back in order.

Then you're free to have the work done wherever you want.

Why choose us?

We're handy, for one thing. There are over 1000 authorized VW dealers across the country.

And each has a full supply of genuine VW parts. 250 specialized tools. And fully trained VW specialists who know how to use them.

VW Diagnosis is in operation at every VW dealership, too.

And 4 free diagnoses come with each new Squareback.

Plus one free maintenance. (And a 2-year or 24,000-mile warranty.*)

So if there's any trouble, we'll catch it.

Not you.

SPECIFICATIONS

Type Engine: 4-cylinder, 4-stroke, O.H.V. type VW engine, rear-mounted. Bore: 3.36 in. Stroke: 2.72 in. Displacement: 96.66 cu. in. (1584 cc) 65 hp. at 4,600 rpm. Piston speed 1,923 ft/min. at maximum speed (1,811 ft/min. at 4,000 rpm.) Compression ratio: 7.7:1. Crankshaft: 4-bearing type. Lubrication: pressure fed by gear pump. Oil cooler in air stream and oil pressure relief valve in crankcase. Oil capacity of crankcase: 5.3 pints. Cooling: air-cooled by a crankshaft-mounted fan, thermostatically controlled. Fuel is precisely metered by an electronic fuel injection system.

Electrical System: Battery: 12-volt, 44 amp./hours. Low cut-in generator: 360-watt with voltage regulator.

Final Drive: With manual transmission: fully synchronized gearbox with 4 speeds forward, 1 reverse. Gear ratios: 1st—4th, 3.80:1, 2.06:1, 1.26:1, 0.89:1. Reverse: 3.61:1. Differential: 4.125:1—Power transmitted through a spiral bevel drive pinion and ring gear. Oil capacity: 5.3 pints in transmission case.

With automatic transmission: 3 speeds forward, 1 reverse. Gear ratios: 1st—3rd gears: 2.65:1, 1.59:1, 1.0:1. Reverse: 1.8:1. Differential: 3.67:1. Torque converter—maximum torque multiplication: 2.5:1. Power transmitted through a spiral bevel drive pinion and ring gear, via axle shafts, each with 2 constant velocity joints. Transmission oil capacity: 2.1 pints. Torque converter capacity: 13.7 pints/refill. 6.3-8.5 pints.

Chassis: Frame: semi-unitized body with platform frame. Front axle: rubber-mounted. Independent suspension by 2 trailing arms on each side, extra-long horizontally crossed torsion bars. 4 large rubber stops to prevent excessive wheel movement. Double-acting telescopic hydraulic shock absorbers. Stabilizer. Rear axle: rubber-mounted in subframe. Independent suspension by trailing arms, diagonal and trailing links and rear axles, each with 2 constant velocity joints. Rubber stop and shock absorbers as in front axle. Steering: worm and roller type, self-centering, with maintenance-free tie rods and hydraulic steering damper, telescoping steering column, deep-dish steering wheel. Turning circle: 36.4 ft., 2.8 turns of steering wheel from lock to lock. Tires: 6.00 x 15L, low-profile type. Brakes: dual hydraulic foot brake operating on all 4 wheels, self-adjusting disc brakes in front. Transparent brake fluid reservoir. Hand-brake: mechanical, acting independently on rear wheels. Fuel tank: under front trunk compartment, 10.6 gallons capacity.

Body: 2 doors, each 42.1 in. wide, can be locked and unlocked from inside and outside. Rear door: maximum width and height, 42.7 x 25.4 in. Windows: toughened safety glass. Windshield: double thick outerlayer safety glass. Heating/defrosting system: 3 outlets at the windshield, two openings at foot level in front, two in rear. Ventilation system: two adjustable fresh-air vents at windshield, one under dashboard. Two operating knobs on the instrument panel. Bucket seats: 2 in front, adjust back and forth in 7 positions. Backrests with built-in headrests, adjustable at 7 angles, and lock automatically to prevent them from tilting.

Standard Equipment: Includes padded dash, armrests (front and rear), sunvisors, 2 outside mirrors, breakaway day/night inside rearview mirror, wall-to-wall carpeting, safety belts for all seats, dual braking

system with dashboard warning light, front wheel disc brakes, combination headlight dimmer/turn signal fingertip control, electronic fuel injection system, electric rear-window defogger, non-repeat ignition/steering/starter lock, 2-speed electric windshield wiper with pneumatic washer system, bucket seats with built-in headrests up front, 4-way emergency flashers, front seat passenger grab handle, large door pockets, courtesy light, 2 back-up lights, assist straps, front and rear ashtray, electric clock, recessed door handles, vinyl headlining, tool kit, fold-down rear seat, variable intensity instrument lighting, side jacking ports, glove compartment, coat hooks.

Optional Equipment (at extra cost): Fully automatic transmission, sliding steel sunroof, leatherette upholstery, whitewall tires.

Dimensions in inches: Wheelbase: 94.5. Track front: 51.6—rear: 53.1. Length: 170.8. Width: 63.2. Height: 57.9.

Weights in pounds: Payload: 992. Total weight: 3,274.

Performance: With manual transmission: maximum speed 84 mph. Fuel consumption: 27 mpg.* With automatic transmission: maximum and cruising speed: 81 mph. Fuel consumption: 25 mpg.* (*Per U.S. gallon at half payload at a steady 3/4 of top speed on level roads.)

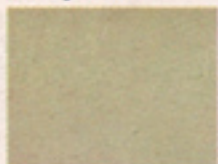
Loading Compartment: rear-seat backrest up:

Length	42.5 inches
Width	46.1 inches
Height	31.9 inches
Loading area	11.8 square feet
Capacity	24.7 cubic feet
plus front luggage compartment	8.1 cubic feet
Total	32.8 cubic feet
Rear-seat backrest down:	
Length	65.8 inches
Width	48.0 inches
Height	31.9 inches
Loading area	19.4 square feet
Capacity	42.4 cubic feet
plus front luggage compartment	8.1 cubic feet
Total	50.5 cubic feet

OUR 2-YEAR/24,000-MILE WARRANTY. If the owner maintains and services the vehicle in accordance with the Volkswagen maintenance schedule and if any part of a new Volkswagen becomes defective within 24 months or 24,000 miles after delivery, whichever comes first, any authorized United States or Canadian Volkswagen dealer, to which the customer delivers the car, will repair or replace the defective part free of charge for material and labor with a new or factory reconditioned part, provided the customer presents the dealer with the validated Maintenance Record and provided, further, that the defective part has not become so due to wear and tear, exposure, misuse, accident or by the installation of non-genuine Volkswagen parts, or by the repair of the car by someone other than an authorized Volkswagen dealer; nor does warranty cover normal maintenance service such as fuel system cleaning and wheel, brake or clutch adjustment, replacement of service items such as spark plugs, ignition points, V-belts, wiper blades or brake and clutch linings and the deterioration of upholstery, soft trim or appearance items.

All specifications subject to change without notice.

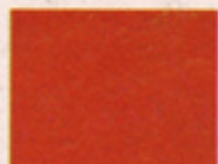
Body color



Savannah Beige



Cobalt Blue



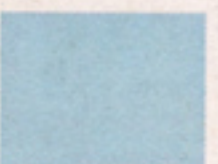
Clementine



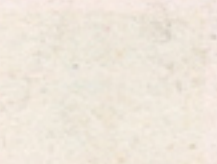
Royal Red



Elm Green



Diamond Blue



Pastel White

Upholstery (cloth)



Brown



Grey



Grey



Grey



Brown

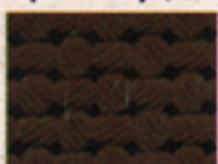


Blue



Blue

Upholstery (leatherette)



Nut Brown



Cream White



Black



Black



Black



Black



Black