

GMC Caballero



RUGGED QUALITY TRUCKS

Caballero, Laredo and Diablo

See Why Any One Could be Your Next Truck

What do you call a vehicle that mates pickup truck utility with the exciting appearance and interior luxury of a car? GMC Caballero! Three Caballeros—with well-balanced design, on a 117" wheelbase, that helps them glide smoothly through traffic or park easily in close quarters and with some nifty features.

WHAT'S NEW?

In front there's new vertical styling for the chrome plated grille, new headlamp bezels, new stand-up hood ornament and 11 new paint colors. The side rocker panel molding is wider and bolder than last year's. Instrument panel has a new glossy black molding extending across the right side; new graphics for the instrument cluster; new orange highlights for the speedometer, fuel gage, available clock*; and revised speedometer scale. A new 3.8 Liter (229 CID) V6 is the standard engine for all three Caballeros in 49 states. A 3.8 Liter (231 CID) V6 is available in California. See Page 4 for engine information.

*Optional at extra cost.

STANDARD CABALLERO

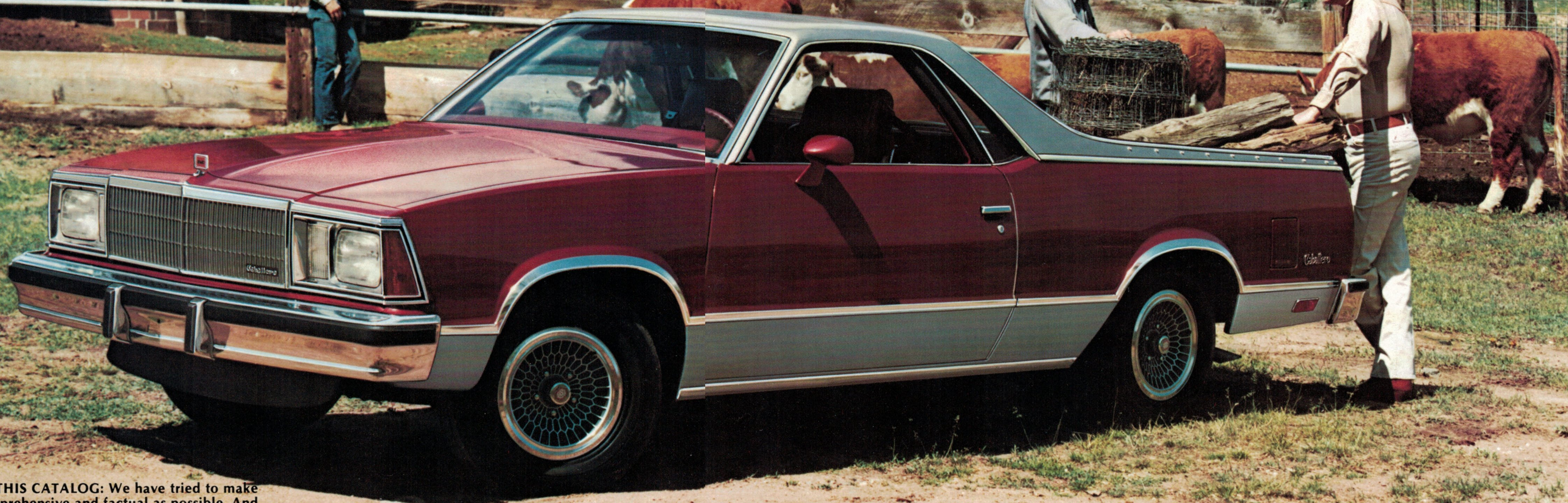
With Caballero you enjoy impressive styling and flair in a standard vehicle. Bright exterior trim accents your choice of one of 14 paint colors. Coordinating interior color (Black, Blue, Camel or Claret) is applied to padded dash, armrests, sunvisors and headliner, bright-trimmed cloth/vinyl door panels, cloth or available vinyl bench seat, and nylon plush carpeting. Rectangular instrument cluster houses speedometer, odometer and fuel gages. A floor-mounted stick shift lever controls the 3-speed transmission. There's impressive viewing through the large glass area and plenty of head, shoulder and legroom in a climate enhanced by heater/defogger, and a dual mode (upper and lower) flow-through ventilation system. Also standard are concealed storage and spare tire compartments behind the seat; color-keyed soft-rim steering wheel; energy-absorbing steering column with anti-theft lock; door-activated courtesy and dome lamps; ashtray and glove compartment lamps; cigarette lighter; 10" rearview mirror; rubber door seals; and sound-absorbing insulation. As you pass, give a toot on the dual-note horn.

CABALLERO LAREDO

Laredo is a sporty vehicle with a dramatic profile defined by distinctive two-tone paint in a choice of 12 distinctive color combinations—plus bright moldings on the body side, tailgate, and pickup box side. Laredo's identification decal appears on the upper right tailgate.

CABALLERO DIABLO

An impressive road-eating machine with tempting styling features of its own. Consider the clean, chiseled look of the front end with chrome grille, large air dam, devilish hood decal, "Diablo" decal on the lower door panel and dual sport mirrors (left mirror is remote-controlled). Two-tone paint offers a choice of 19 color combinations. Steel-belted radial tires roll on attractively styled available Rally wheels. For added punch, White-striped or White-lettered tires and a vinyl roof are available.



A WORD ABOUT THIS CATALOG: We have tried to make this catalog as comprehensive and factual as possible. And we hope you find it helpful. However, since the time of printing, some of the information you'll find here may have been updated. Your dealer has details and, before ordering, you should ask him to bring you up to date.

Caballero/Laredo is shown above.
Shown on the cover is the Caballero/Diablo.



Caballero with available vinyl roof and Rally Wheels.



Caballero/Laredo is shown.

FRONT DISC BRAKES ARE STANDARD

Standard single-piston, floating-caliper-type front disc brakes help resist fade and aid recovery from the effects of water. Audible lining wear indicators signal when pads need replacing. Rear drum brakes are finned for efficient cooling.

RECOMMENDED MAINTENANCE INTERVALS

Spark Plugs	30,000 Miles*
Chassis Lubrication	7,500 Miles or 12 months
Engine Oil	7,500 Miles or 12 Months
Air Cleaner Element	30,000 Miles
Oil Filter	First Break-In 7,500 Miles Every 15,000 Miles After
Automatic Transmission Fluid	Every 100,000 Miles

*—4.4 Liter V-8 22,500 Miles

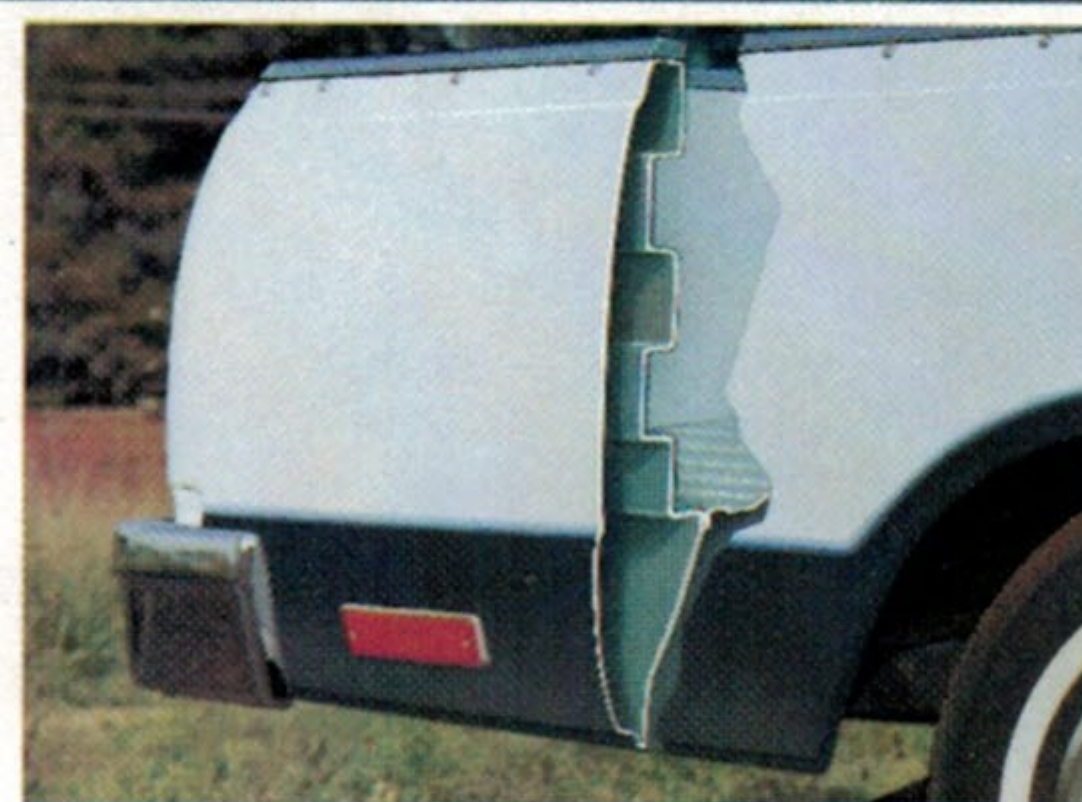
A WORD ABOUT ENGINES . . . The GMC trucks shown in this catalog are equipped with GM-built engines produced by various divisions. Please refer to the engine chart included in this catalog and see your dealer for complete details about engine sources and availability.

BUY OR LEASE A GMC TRUCK

Many GMC Truck dealers offer you the opportunity to buy or lease a GMC Truck. Ask about their leasing plans. They may be right for you.

CABALLERO PICKUP BOX

Double-wall construction helps keep nicks or dents on the inner box from marring the outer finish. Tailgate lowers with one-hand operation to permit the 35.5-cu.-ft., 800-lb.-payload-capacity box to handle 4' x 8' panels.



ENGINE/TRANSMISSION SELECTOR GUIDE—49 STATES

	ORDER- ING CODE	ENGINE	TRANSMISSION	REAR AXLE RATIO (TO 1)
Standard	LC3	3.8 Liter, (229 CID) 2-bbl., V6*	Std. 3-Speed Manual Available Automatic	2.73
Available	L39	4.4 Liter, 2-bbl., V8*	Available Automatic	2.56
Available	LG4	5.0 Liter, 4-bbl., V8*	4-Speed Manual, Available Automatic	3.08 2.41-2.73

CALIFORNIA

Available	LD5	3.8 Liter, (231 CID) 2-bbl., V6†	Available Automatic	2.73
Available	LG4	5.0 Liter, 4-bbl., V8*	Available Automatic	2.41-2.73

*Made by Chevrolet Motor Division.

†Made by Buick Motor Division.

GM Continuous Protection Plan This option offers service protection in addition to that provided by GM's new vehicle limited warranty. Ask your dealer about it. (Available only in U.S.A. and Canada during 1980 model year.)



Available Bucket Seats with Console option.



Available 50/50 Split Bench Seat with Dual Folding Armrests.

INTERIOR ELEGANCE THREE WAYS

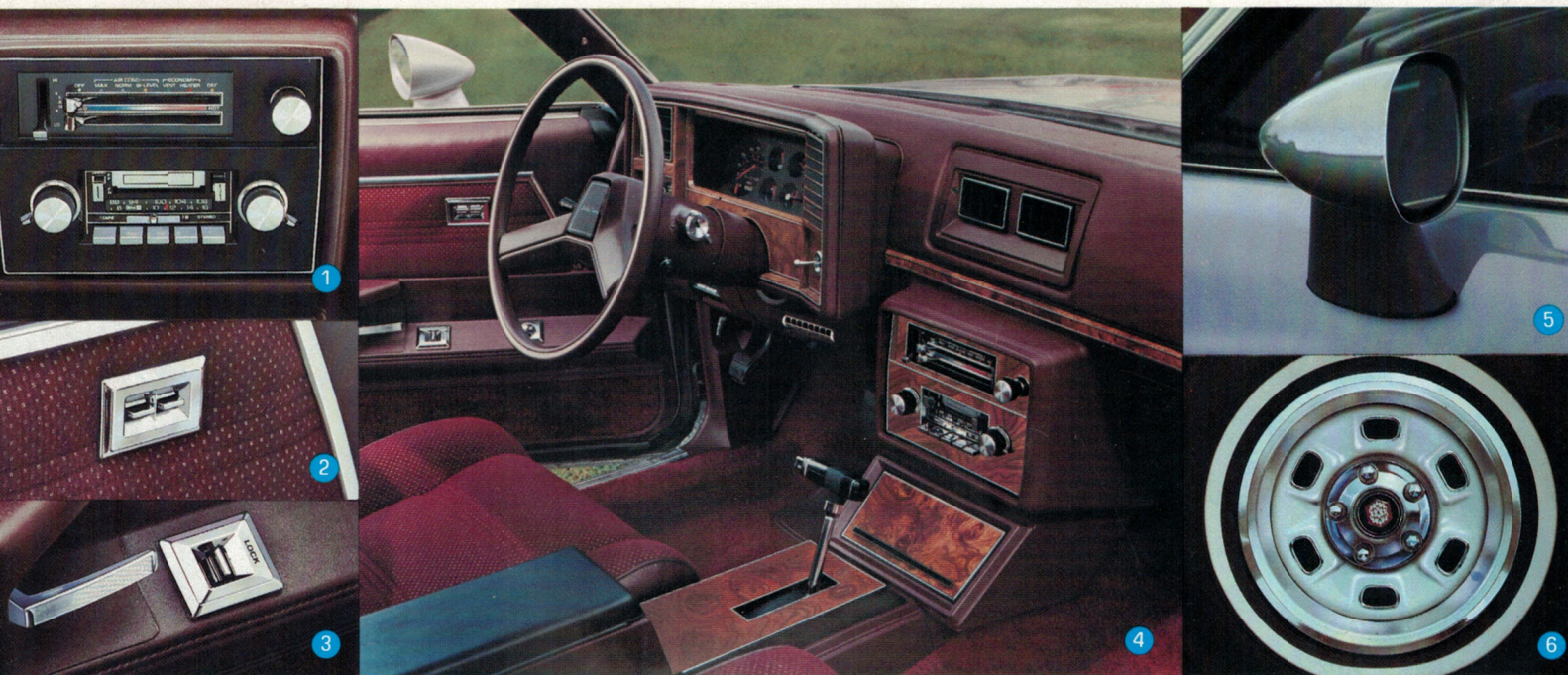
Interiors are color-keyed to the outside paint to give Caballero a look of coordinated luxury. Cloth upholstery comes in Blue, Camel and Claret; all-vinyl is available in the same colors plus Black.

The standard Caballero seat, in cloth is a deep-foam-cushioned bench seat that folds forward for easy access to the storage area. Included are two outboard-mounted lap/shoulder belts with warning light and buzzer for the driver's position and one center lap belt. Standard interior is available with a vinyl trimmed bench seat.

If you prefer the additional comfort of the available 50/50 split bench seat with dual fold-down center armrests, you may also specify the six-position power option for the driver's side or you may prefer to order the power bench seat option. This seat comes in either cloth or vinyl and is shown above in cloth. (Seat and shoulder belts are color coordinated.)

For the sporty feeling, choose available all-vinyl bucket seats with integral headrest and add available center console with transmission shift lever and storage compartment (pictured at the top.)

Available Caballero Accessories



Pictured accessories: ① Air conditioning and available radio. Also available AM, AM/FM, AM/FM stereo, *AM with 8-track stereo tape, AM/FM stereo with digital clock. Windshield antenna included with these radios; power antenna available. *AM/FM or AM/FM stereo radio with CB; both with power antenna included. ② Electric power windows. ③ Electric door lock. ④ Shown in interior: center console with shift lever and storage compartment; special gage package including voltmeter, temperature, oil pressure and tachometer; Comfortilt steering wheel. ⑤ Dual body-color sport mirrors, remote control available for both or driver's side only. ⑥ Rally wheels. *To be discontinued mid-1980 model year.

Other Available Accessories: • Heavy-duty battery and Delco-tron generator • Cargo box tonneau cover • Cargo box tie-downs • Cargo box side rails • Color-keyed floor mats • Tinted glass for all windows • Auxiliary lighting includes headlamp warning buzzer, dome courtesy and underhood lights • Deluxe body side moldings, door edge guard, • Heavy-duty cooling • Vinyl roof cover available in seven colors, includes bright metal outline molding • Automatic speed control with automatic transmission only • Sport suspension with V8 engine only • 22-gallon fuel tank • Special sport wheel covers • Intermittent windshield wiper system. Ask your GMC Truck dealer about other standard and available equipment not mentioned in this catalog.

A WORD ABOUT COMPONENTS, OPTIONAL EQUIPMENT, ASSEMBLY AND AVAILABILITY OF THESE GMCs

These GMCs incorporate thousands of different components produced by various divisions of General Motors and by various suppliers to General Motors. From time to time during the manufacturing process it may be necessary in order to meet public demand for particular vehicles or equipment or to meet federally mandated emission, safety and fuel economy requirements or for other reasons to produce these products with different components or differently sourced components than initially scheduled. All such components have been approved for use in these products.

With respect to factory-installed, extra-cost optional equipment, make certain you specify the type of equipment you desire on your vehicle when ordering it from

your dealer. **Some options may be unavailable when your vehicle is built. Your dealer receives advice regarding current availability of options. You may ask the dealer for this information. GMC also requests the dealer to advise you if an option you ordered is unavailable. We suggest you verify that your vehicle includes the optional equipment you ordered, or if there are changes that they are acceptable to you.**

The GMC Caballero described in this brochure is assembled at facilities of General Motors Corporation operated by GM Assembly Division or GM of Canada. This vehicle is also available from Chevrolet dealers under the name Chevrolet El Camino.

Vehicles shown illustrate standard or available factory-installed equipment unless noted as dealer-installed accessories. Items referred to as options or available are at extra cost. Different model applications of the components that are listed in accompanying tables as well as other items of the factory-installed equipment may be ordered through your GMC dealer.

GMC Truck & Coach Division reserves the right to make changes at any time without notice in prices, colors, materials, equipment, specifications and models and also to discontinue models. Data shown is basic information for the prospective buyer effective at time of issuance of this pamphlet. Dealer will provide complete up-to-date information on available equipment, specifications, etc., not shown here.



GMC TRUCK & COACH
GENERAL MOTORS CORPORATION

GMC
 GMC
 GMC

P & D GMC SALES, INC.
 1000 Hiawatha Blvd W
 Syracuse, NY 13204