

1985 CHRYSLER  
*New Yorker*







## Chrysler New Yorker... successfully marries the best

High technology and luxury, once thought an unlikely combination, happily co-exist in this classically handsome New Yorker. Chrysler people have used the best that modern technology has to offer to produce an automobile that is a driver's delight.

New Yorker is a product of the

transverse-engine, front-wheel-drive technology that Chrysler pioneered in North America. We have built on this basic strength each year since its introduction. One of our latest and most important refinements finds designers, engineers and manufacturing people working as a closely-knit team to make sure every step in the process of building a car is completely compatible. The way New Yorker looks and performs, the way it runs, is right from the moment it is driven off the assembly line. And it stays like that. New Yorker, a new and better way to build a car.

1985 New Yorker in mink brown with mink landau roof.

Rich, brown leather (optional) 5/50 front seats. Soft, Corinthian leather upholstery has the smell and feel of luxury.







## New Yorker... a continuing quest for improvement

The 1985 New Yorker continues Chrysler's proud tradition of never being satisfied with the status quo. This quest to improvement shows in small, but important, ways: a modified front end design to provide more aerodynamic styling with reduced drag; numerous refinements in the interior workings of New Yorker's

2.6-litre Silent-Shaft engine to enhance its fuel efficiency; reduced throttle pedal effort. The list can go on and on. The sum of it all is a car that sets and meets ever-higher standards of quality, reliability and owner-satisfaction.

Chrysler New Yorker has many competitors, but no competition. We stand by that statement. We believe your own examination and comparison will verify it. Start your survey today with a test drive at your Chrysler dealer. Then ask yourself why you should look further.

Cloth pillow-style 50/50 front seats provide standard plush elegance. Individually adjustable, with adjustable head restraints, they have reclining seat backs and centre consolettes with seat controls. Rear seats feature integrated head-rests and a folding centre armrest.

Overhead console has compartments for sunglasses and garage door opener. Twin map/reading lights are included; compass and outside temperature read-outs can be added as an option.







## Maximize your Driving Pleasure

New Yorker's standard electronic instrument cluster employs a graphic message centre to display details such as a door improperly latched or the windshield washer fluid low; on-the-road information is provided by digital speedometer, odometer and trip odometer. The system also incorporates electronic oil, voltage, fuel and temperature gauges. Complete though New Yorker is, there are options available which cater to individual tastes. Consider maximizing your driving pleasure with some of the following:

**Electronic Navigator.** As useful as it is fascinating, will tell you, among other things, trip distance travelled and still to go, average speed and fuel consumption, how much further you can go on the fuel you have.

**Ultimate Sound Radio** is what the name implies. It's an AM/FM/MX system with cassette player that features AM stereo, Dynamic Noise Reduction, 5-channel Graphic Equalizer, memory for up to 20 stations and memory scan. Cassette player has automatic reverse and all-electric pushbuttons.

**Illuminated Visor Vanity Mirror** lights when opened in its position on the right sun visor.

**Bi-Level Air Conditioning** has new controls for more precise temperature control and easier



operation. Bi-level ventilation increases air circulation; more ways of directing heated or cooled air provide for more even temperature control.

**Power Door Locks** provides security and convenience. Lock and unlock all doors at the touch of a switch.

**Automatic Speed Control.** Set it at the desired speed for highway cruising and you maintain that speed automatically. Releases immediately when you disengage the switch or touch the foot brake pedal.

**Tilt Steering Wheel** adjusts to six different driving angles to suit your own favourite driving position. Also provides for easier entry and exit.

## 1985 Chrysler New Yorker... Building the Best

You want a car with doors that fit well, a hood that closes properly, windows that are tight, and a strong body that sounds and feels right. You want a car that looks good and performs well. And you want a car that will last.

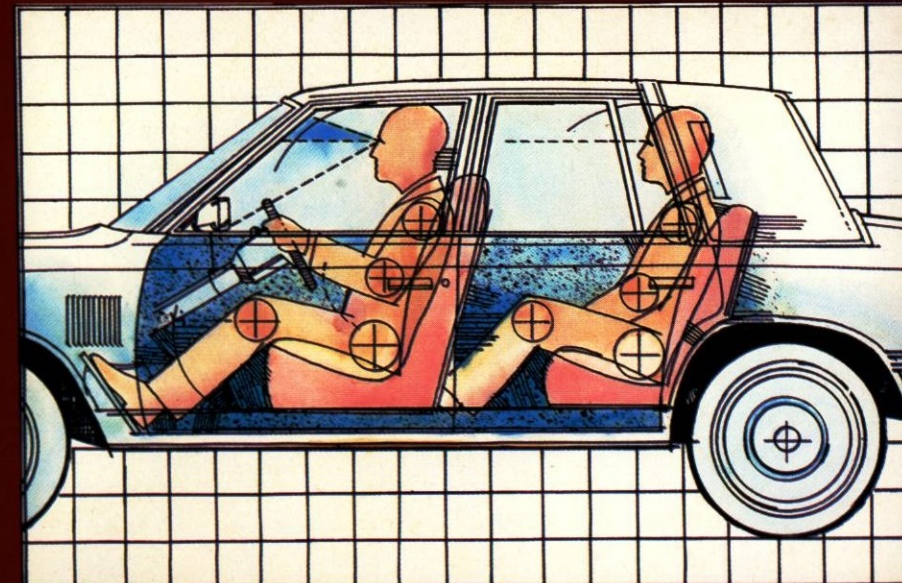
Chrysler's new technology is building exactly that kind of car for you. A car that more than holds its own against any and all competitors. Pictured on this page is a sampling of the advanced methods and machines Chrysler people are employing in every phase of design, engineering and manufacturing. It's a fascinating story revealed most tellingly when you see and drive a Chrysler product yourself... the best-built, best-backed cars made in North America.

Wind tunnel test results translate into cars with smooth aerodynamic styling that is good looking and improves fuel-efficiency.

We use programmable robots to weld every car the same way, evidence of our determination that every weld will be just right. And we use



galvanized and zinc-coated steels for almost every body panel and structural member. The result is a car that's built tight, built to last.

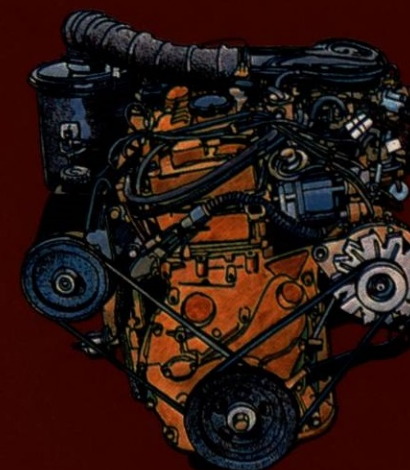


**Front-wheel-drive.** Engine and trans-axle form a compact power train with weight over the front driving wheels for greater efficiency, stability and interior room.

**Electronic fuel injection.** Increases engine's efficiency by controlling the fuel/air ratio precisely. Improves responsiveness, smoothness and fuel economy.

**Special sound insulation.** Sound insulation measures throughout New Yorker's body to reduce transfers of drivetrain and road noises.

**Power-assisted rack-and-pinion steering.** Steering has low turning effort and fast response while providing excellent directional stability and positive road feel.



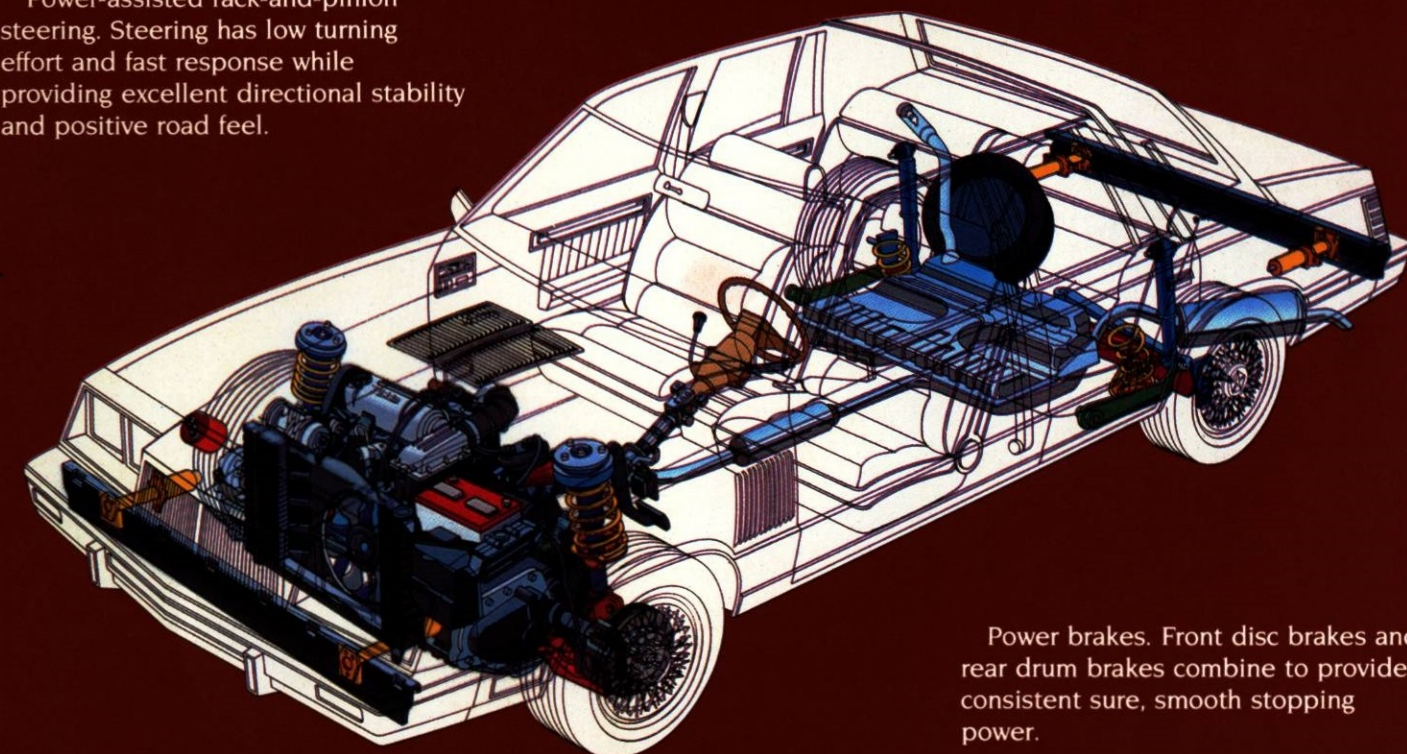
53-litre (11.7-gallon) fuel tank. Generous fuel capacity increases driving range for highway cruising and cuts down city fuel stops.

**Trailing arm rear suspension.** The combination of beam axle with trailing arms, coil springs, adjacent shock absorbers, track bar and torsion tube anti-roll control works to give New Yorker a smooth, level ride, good roadholding and safe predictable handling.

Chrysler-built TorqueFlite automatic transaxle. Wide-ratio gearing helps to offer better acceleration through the gears without loss of fuel economy.

**Iso-Strut front suspension.** Rubber-isolated to prevent road shocks from being transmitted to driver and passengers. The suspension has independent front coil springs and Iso-Struts combined with an integral linkless sway bar.

**Engine Choices:** Standard is the Mitsubishi-built 2.6-litre engine with exclusive "Silent-Shaft" feature for exceptional engine smoothness. For even more power there's the optional 2.2 Turbocharged engine option—V-8 performance levels but uses a lot less fuel. Both engines have Extended-Life exhaust systems.



**Power brakes.** Front disc brakes and rear drum brakes combine to provide consistent sure, smooth stopping power.



## Chrysler New Yorker Selected Standard and Optional Features

AIR CONDITIONING—Bi-level	O
ALTERNATOR—75 amp. with 2.6 litre engine	S
40/90 amp. with 2.2 litre Turbo	O
ARMRESTS—Centre folding, dual front, single rear	S
ASSIST HANDLES—Above doors (3)	S
BATTERY—400 amp., Maintenance-Free	S
500 amp., Maintenance-Free	O
BRAKES—Power front disc, rear drum, self adjusting	S
BUMPER GUARDS AND PROTECTIVE RUB STRIPS—Front and rear	S
CLOCK—Digital electronic, integral with radio	S
CONSOLES—Forward, includes cassette, coin holders and lockable bin	S
Overhead, with map lights, storage for sunglasses/garage opener	S
Overhead, with added digital temperature and compass readouts	O
CORNERING LAMPS	S
CORROSION PROTECTION—Extensive use of galvanized steel; lower bodyside urethane stone chip-resistant primer; front fender plastic liners (backed by Chrysler's Anti-Corrosion Limited Warranty)	S
DEFROSTER—Rear window, electric	O
DOME LIGHT—With courtesy switches (all doors) and map/reading light	S
ELECTRONIC NAVIGATOR—Travel computer	O
ELECTRONIC VOICE ALERT—English or French	S
ENGINE BLOCK HEATER	O
FLOOR MATS—Front and rear	O
GLASS—Tinted	S
HALOGEN HEADLAMPS	S
ILLUMINATED ENTRY	O
INSIDE REMOTE RELEASES—Hood, fuel door, trunk lid	S
INSTRUMENT PANEL—Electronic	S
INSULATION—Sound inhibiting package and hood pad	S
MIRRORS—Dual, outside, power-adjustable, chrome	S
Illuminated, passenger side, vanity	O
MOULDINGS—Vinyl bodyside	O
POWER ASSISTS—Windows	S
Door locks, seat(s)	O
PROTECTIVE ANTI-STONE-CHIP COATING—Urethane, lower bodysides	S
RADIO—Electronically tuned with digital read-out and clock	S
AM	S
AM stereo/FM stereo with cassette, 6 speakers, Graphic Equalizer and Dynamic Noise Reduction System	O
RADIO SPEAKER PACKAGE—Premium, includes rear amplifier and co-axial speakers	O
SEATS—50/50 front, individual, cloth	S
50/50 front, individual, leather	O
SEAT-BACK MAP POCKETS	S
SPARE TIRE—Conventional	O
SPEED CONTROL, AUTOMATIC	O
STEERING—Power, rack-and-pinion	S
Power, rack-and-pinion, firm-feel, quick-ratio	O
STEERING COLUMN—Tilt	O
STEERING WHEEL—Leather-wrapped luxury	O
SUSPENSION—Heavy duty, includes gas-filled struts/shock absorbers	O
Sport Handling (recommended with 2.2 L Turbo) includes gas-filled struts/shock absorbers, firm-feel quick-ratio steering	O
TAPE STRIPES—Accent, colour-keyed	S
TIRES—P185/75 R14, SBR, WSW, All Season	S
UNDERCOATING	O
VINYL ROOF—Padded Landau, with opera lamps	S
WHEEL DRESS-UP—14" wire, with locks	S
14" cast aluminum, road	O
WINDSHIELD WIPERS—Variable delay, intermittent wipe	S

S—Standard equipment O—Optional equipment at extra cost SBR—Steel-belted radial WSW—White side wall

This catalog does not list all standard and optional equipment items, and some options are subject to availability restrictions. See your dealer for complete details.



All product illustrations and specifications are based on authorized information. Although all descriptions are believed correct at publication, accuracy cannot be guaranteed. Some of the equipment shown on product illustrations is optional at extra cost. Chrysler Canada Ltd. reserves the right to make changes from time to time, without notice or obligation, in prices, standard and optional equipment listed, specifications, colours and materials, and to change or discontinue models. Certain models, packages and options are subject to specific requirements and restrictions. Ask your dealer for the latest information.



Printed in Canada

## Dimensions, Weights and Capacities

	Four-Door Sedan	
	millimetres	inches
Wheelbase	2624	103.3
Overall Length (a)	4756	187.2
Overall Width	1739	68.5
Overall Height (b)	1350	53.1
Turning Diameter—metres (feet)	11 (35.6)	
Curb Weight—kilograms (pounds)	1242 (2738)	
Usable Luggage Capacity—litres (cu. ft.)	481 (17.0)	
Passenger Capacity	5	
Fuel Capacity—litres (Imp. gals.)	53 (11.7)	

## Engines and Transaxles

	2.6-litre 4-cyl. (c)	2.2-litre 4-cyl. EFI TURBO
Availability	Standard	Optional
Type	SOHC	SOHC
Fuel Delivery	2-Barrel Carb.	Multipoint EFI
Net Power—kW (bhp) @ RPM	78 (105) @ 4800	109 (146) @ 5200
Net Torque—N·m (lb-ft) @ RPM	192 (142) @ 2800	228 (168) @ 3600
Exhaust System—type of steel	Extended-Life	Extended-Life
Transaxle and OTGR* availability 3-Speed Automatic—Std.	3.02	3.02

(a) includes bumper guards. (b) Based on 5-passenger load, base engine and standard tires.

(c) Mitsubishi "Silent Shaft". Uses leaded or unleaded fuel.

Std.—Standard EFI—Electronic Fuel Injection

\*Overall Top Gear Ratio (OTGR) is similar to the Axle Ratio on a car with rear-wheel drive.

**TRAILER TOWING:** Ask your dealer for Chrysler Canada's special information and recommendation brochure.

## WARRANTY PROTECTION

When you build a quality car, you can back it with superior warranty protection.

Chrysler has been an industry leader in warranty coverage, and 1985 is no exception. Ask your dealer for details about our 1985 New Vehicle Limited Warranties. They protect your car's Powertrain for up to 5 years or 80,000 kilometres\* and Outer Body Panels against corrosion perforation for the same period. There's more . . . ask your dealer.

You'll soon learn why we say Chrysler products are not only "Best Built" but "Best Backed", too.

\*Whichever occurs first.



**We've got  
Chrysler LeaseAbility**

. . . which means any Chrysler,  
Dodge or Plymouth car can be  
leased from your local Chrysler  
Dealer...the Leasing Professional.

CNYC-85-E