

CAVALIER RS CONVERTIBLE

1991



Now the
fun begins!

The 1991 Cavalier Convertible is here. It's a sporty RS. The styling is beautifully updated and the interior is all new. Best of all, the '91 Cavalier RS is one of America's most affordable convertibles.

Cavalier RS Convertible gets you more than the sun, stars and envious glances. You get a

Delco AM/FM stereo, power steering and power brakes, power door locks and power windows. All standard. Ample performance is provided by a 140-HP 3.1 Liter V6 with Multi-Port Fuel Injection. A Sport Suspension and P195/70R-14 all-season tires contribute to Cavalier's quick and agile road manners.

A white all-vinyl interior is optional. It's very practical. And very sporty. There are four exterior colors to choose from: Bright Red, Bright Blue Metallic, Black and White. The convertible top is available in Black or White.

The Cavalier RS Convertible is here. What are you waiting for?

C A V A L I E R



The new Cavalier RS is one of America's lowest-priced convertibles.



CAVALIER

Cavalier RS Convertible comes on strong with a 3.1 Liter V6 with Multi-Port Fuel Injection. Features include aluminum cylinder heads, a fast-burn combustion chamber and a low-restriction intake manifold.



A new optional in-trunk convenience net helps keep small items secure.



Slide-out cup holder is a new standard feature for 1991.



A standard stainless steel exhaust system (including all pipes, catalytic converter and muffler) is designed to be corrosion-resistant.

Cavalier RS Convertible with optional white vinyl interior.



STANDARD FEATURES

CAVALIER RS CONVERTIBLE

- 3.1 Liter V6 engine with Multi-Port Fuel Injection
- 5-speed manual transmission
- P195/70R-14 all-season steel-belted radial ply tires*
- Automatic safety belt system for driver and right front passenger. Manual lap/shoulder safety belts, outboard rear seating positions
- Base-coat/clear-coat paint
- Body-side moldings
- Brakes: power front disc/rear drum
- Carpeted trunk
- Composite halogen headlamps
- Color-keyed safety belts
- Cup holders
- Delco AM/FM stereo with seek-scan, Extended Range Sound System and digital clock
- Dual sport mirrors (left-hand remote)
- Dual visor mirrors
- Easy-entry passenger seat
- Gage package with tachometer
- Floor console with armrest
- Headlamps-on reminder
- Sport Suspension
- Power door locks
- Power rack-and-pinion steering
- Power ventilation system
- Power windows
- Side-window defoggers
- Stainless steel exhaust system
- Styled steel wheels
- Tinted glass.



See your Chevrolet dealer for terms of this limited warranty.

* Use of tire chains with this tire may cause damage to your car.

INTERIOR COLORS	Gray	Camel	White
Standard cloth	■	■	
Optional vinyl			■

EXTERIOR COLORS			
Black	■	■	■
Bright Blue Met.	■		■
Bright Red	■	■	■
White	■	■	■

CONVERTIBLE TOP COLORS			
Black	■	■	■
White	■	■	■

DIMENSIONS (in.)	
Wheelbase	101.3
Overall length	182.3
Width	66.3
Overall height	52.0
Head room f/r	37.9/36.1
Leg room f/r	43.0/30.7
Shoulder room f/r	52.8/38.0
Hip room f/r	47.6/38.0
Luggage capacity	10.3 cu. ft.
Fuel tank capacity	13.6 gal.

POWER TEAMS	Transmissions	
Engine	5-Spd. Manual	3-Spd. Auto.
3.1 Liter V6 with MFI	S	O

MFI—Multi-Port Fuel Injection. S—Standard. O—Optional.

PREFERRED EQUIPMENT GROUPS

The 1991 Cavalier RS Convertible features optional Preferred Equipment Groups that help simplify the buying process. Choose the package containing the equipment you desire, then select from the accompanying list of individual options. Some restrictions apply. See your dealer for details.

RS CONVERTIBLE	1	2
GROUP 1		
Air Conditioning	■	■
Carpeted Front and Rear Floor Mats	■	■
Instrument Panel Reading Lamp	■	■
Intermittent Wipers	■	■
GROUP 2		
Comfortilt Steering Wheel		■
Delco AM/FM Stereo with Seek-Scan, Stereo Cassette Tape Player, Extended Range Sound System and Digital Clock		■
Electronic Speed Control with Resume Speed		■
In-Trunk Convenience Net		■

Important: A Word About This Catalog.

We have tried to make this catalog as comprehensive and factual as possible. We reserve the right, however, to make changes at any time, without notice, in prices, colors, materials, equipment, specifications, models and availability. Since some information may have been updated since the time of printing, please check with your Chevrolet dealer for complete details.

EXTERIOR COLORS



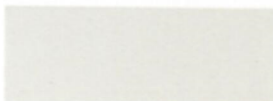
Black



Bright Blue Metallic

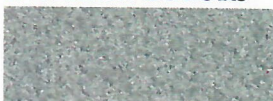


Bright Red



White

INTERIOR COLORS



Gray (cloth)



Camel (cloth)



White (vinyl)

TOP COLORS



White



Black

INDIVIDUALLY AVAILABLE OPTIONS

(May be added to any Preferred Equipment Group if not already included. This may not be a complete list of individually available options. See your dealer for details.)

- Air Conditioning
- Delco AM/FM Stereo with Seek-Scan, Stereo Cassette Tape Player, Extended Range Sound System and Digital Clock
- Delco AM/FM Stereo with Seek-Scan, Stereo Compact Disc Player, Extended Range Sound System and Digital Clock
- Engine Block Heater
- Rear Deck-Lid Carrier
- White Vinyl Interior.



Optional: Delco AM/FM stereo with seek-scan, stereo cassette tape player, Extended Range Sound System and digital clock.



Optional: Delco AM/FM stereo with seek-scan, stereo compact disc player, Extended Range Sound System and digital clock.

For complete information on other 1991 Chevrolet Cavalier models, ask your dealer for the 1991 Chevrolet catalog. At your Chevrolet dealer, financing or leasing your new Chevrolet can be as easy as saying GMAC.

Chevrolet, the Chevrolet emblem, General Motors, GM and the GM emblem are registered trademarks and Cavalier and Chevy are trademarks of the General Motors Corp. © 1991 GM Corp. All rights reserved.



Let's get it together... buckle up.

Litho in U.S.A. 5022 January 1991

MORE PEOPLE ARE WINNING WITH THE

Heartbeat

OF AMERICA TODAY'S CHEVROLET™

