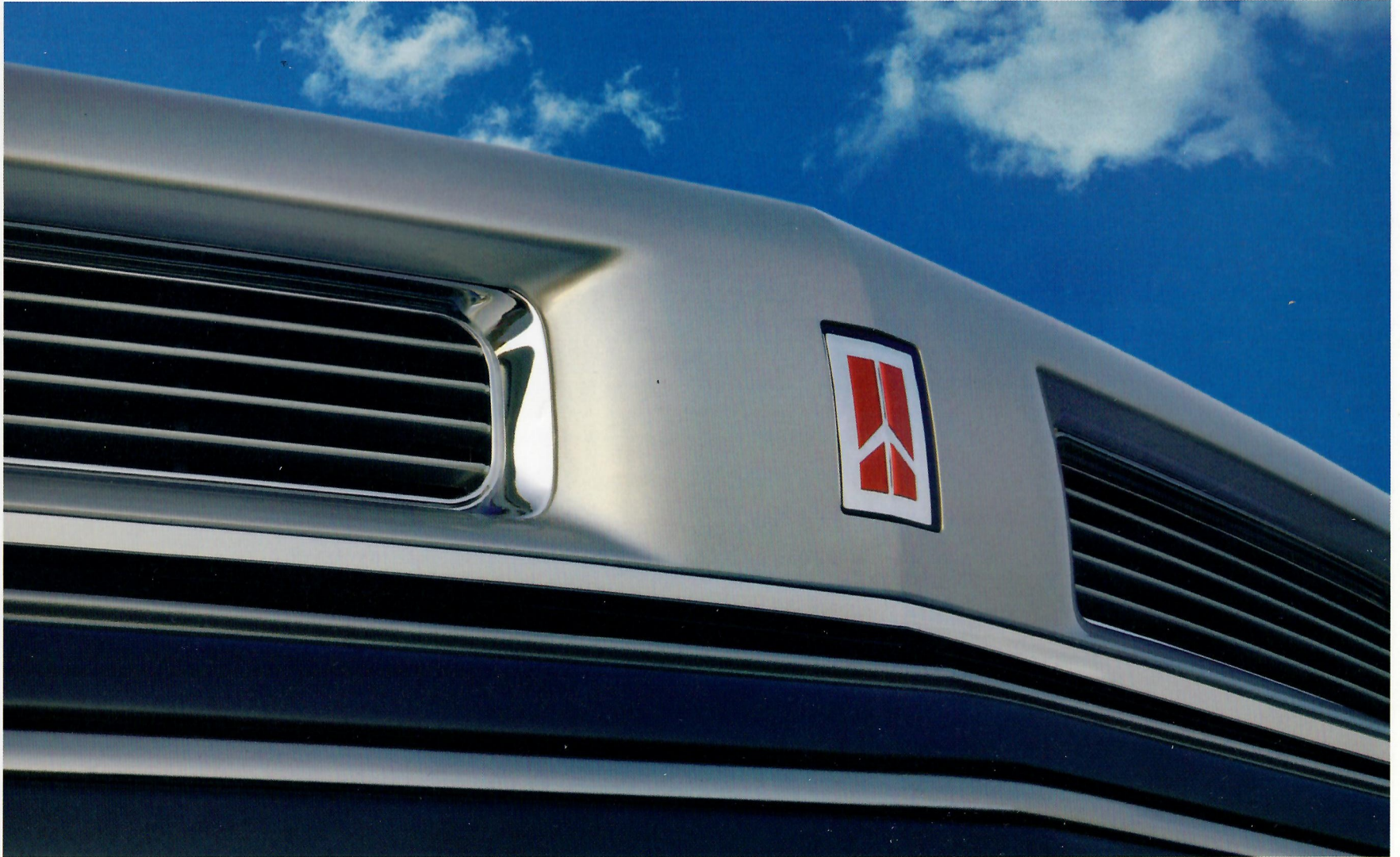


Oldsmobile  1992





6 **NINETY EIGHT**

A Full-Size Luxury Sedan With Exceptionally Quiet Performance.



8 **EIGHTY EIGHT ROYALE**

An All-New Full-Size Sedan Representing A New Dimension Of Innovation.



10 **TORONADO**

A Personal Luxury Coupe With Exhilarating Technology.



12 **CUTLASS SUPREME**

A Mid-Size Sedan, Coupe Or Convertible Providing An Inspired Driving Experience.



14 **CUTLASS CIERA**

A Traditional Mid-Size Sedan Engineered With Proven Endurance.



16 **ACHIEVA**

An All-New Compact Coupe Or Sedan That's Both Smart And Fun.



18 **CUTLASS CRUISER**

A Versatile Mid-Size Wagon Engineered For The Long Run.



20 **CUSTOM CRUISER**

A Full-Size Luxury Wagon Representing Function At Its Finest.



22 **SILHOUETTE**

A Luxury Minivan Engineered For Space And Style.



24 **BRAVADA**

A Luxury Sport Utility Vehicle Engineered To Control The Unexpected.



THE POWER OF INTELLIGENT ENGINEERING

On a lonely, icy road, you will appreciate it. On a highway entrance ramp, you will feel it. And throughout your ownership experience, you will value it. It's the power of intelligent engineering. ¶ It's responsive performance. Spirited engines. Fuel-efficient engines. It's balanced engines with both these qualities. ¶ It's innovative technology and proven engineering. Like the added control of anti-lock braking and the logic to offer it on our smallest car line, as well as seven others. It's testing that produces cars with proven reliability. ¶ It's refinement. It's attention to detail and step-up features for a pleasurable driving environment. ¶ It's a balance of performance and comfort. The harmony of form and function. It's the kind of quality that provides the confidence to back each product with the Oldsmobile Edge, the most comprehensive owner satisfaction program in the industry. ¶ Experience the power of intelligent engineering in a full line of smart, contemporary vehicles. Vehicles that are a step ahead in design, value and total satisfaction. ¶

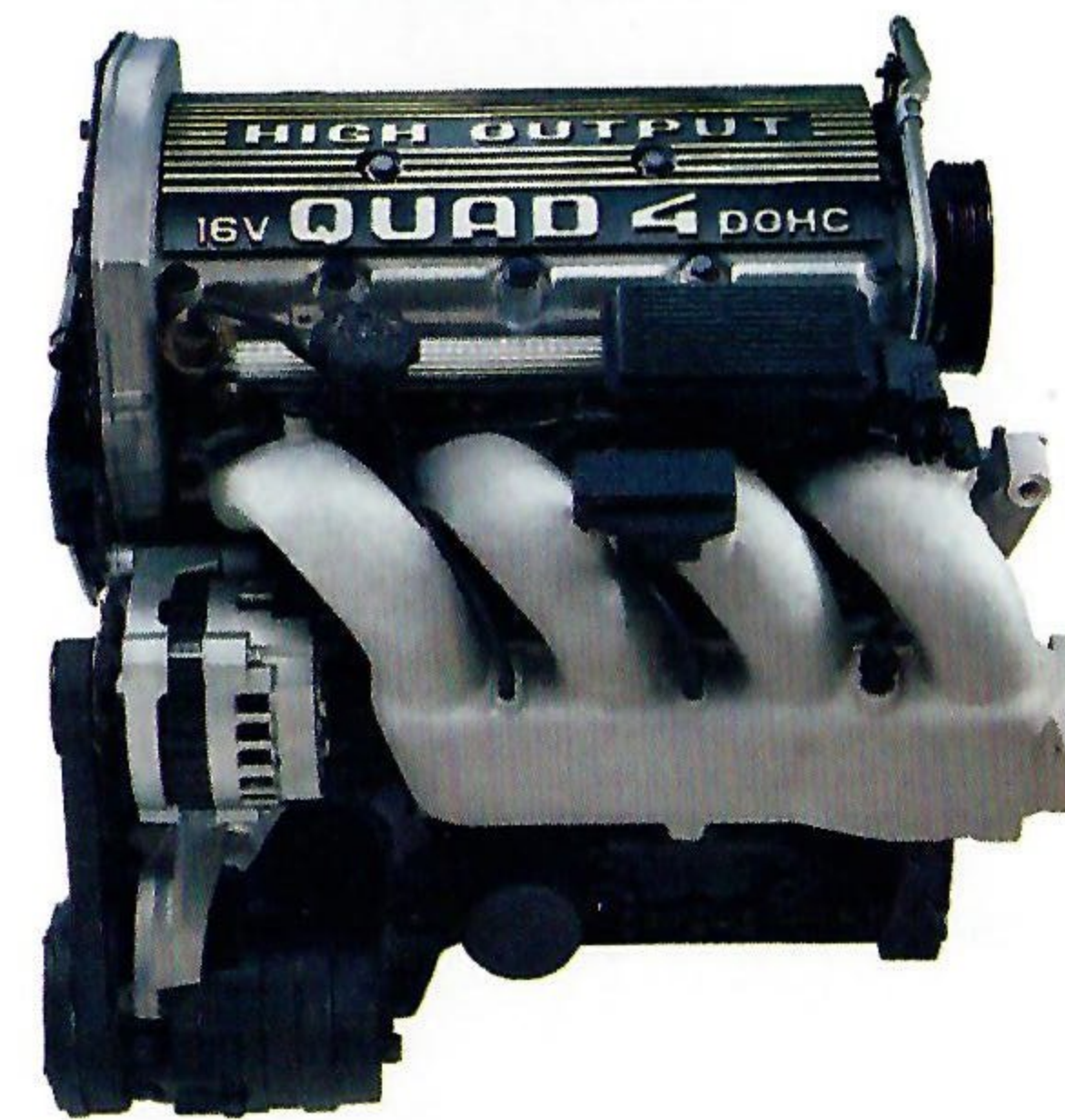
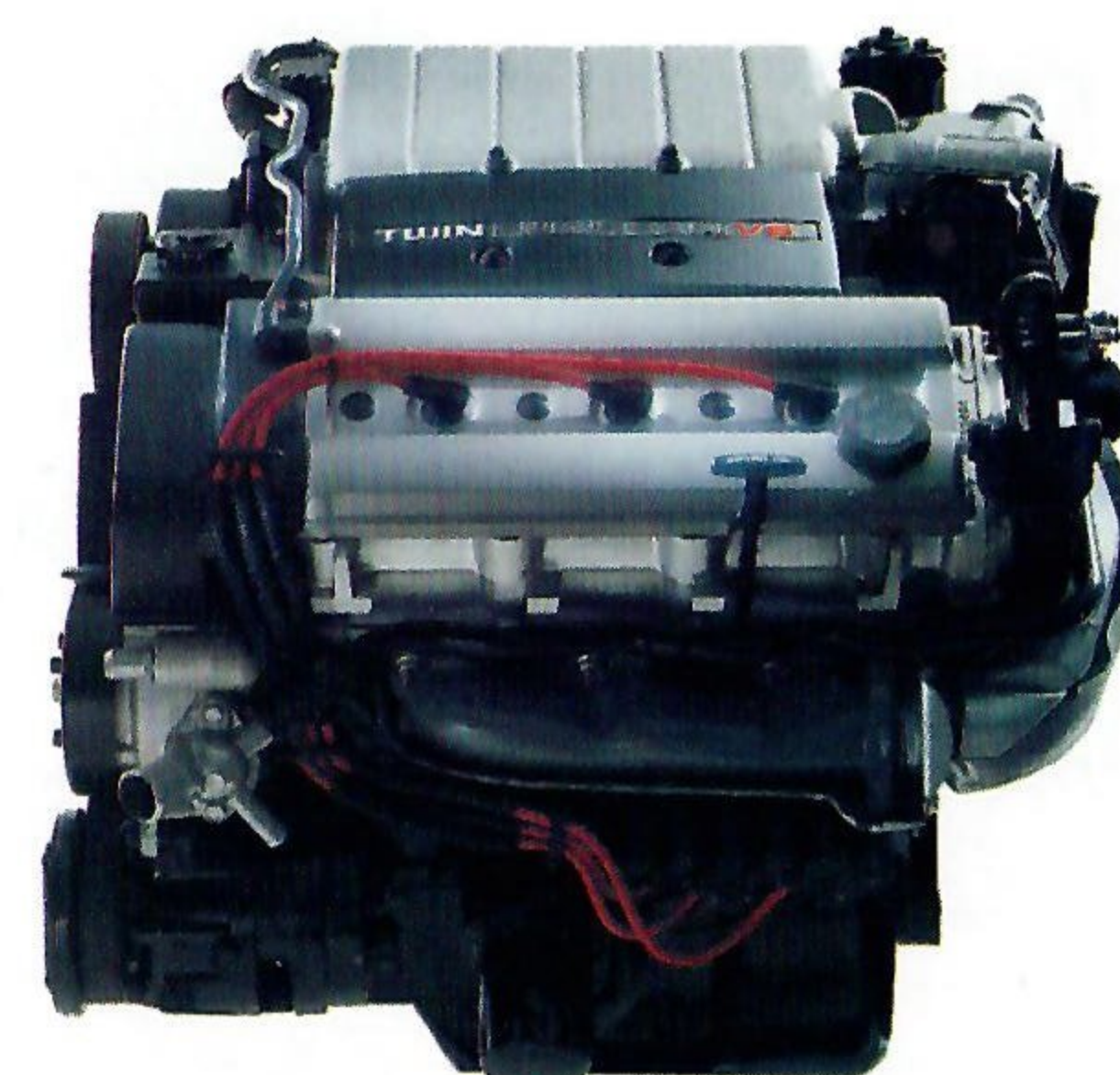
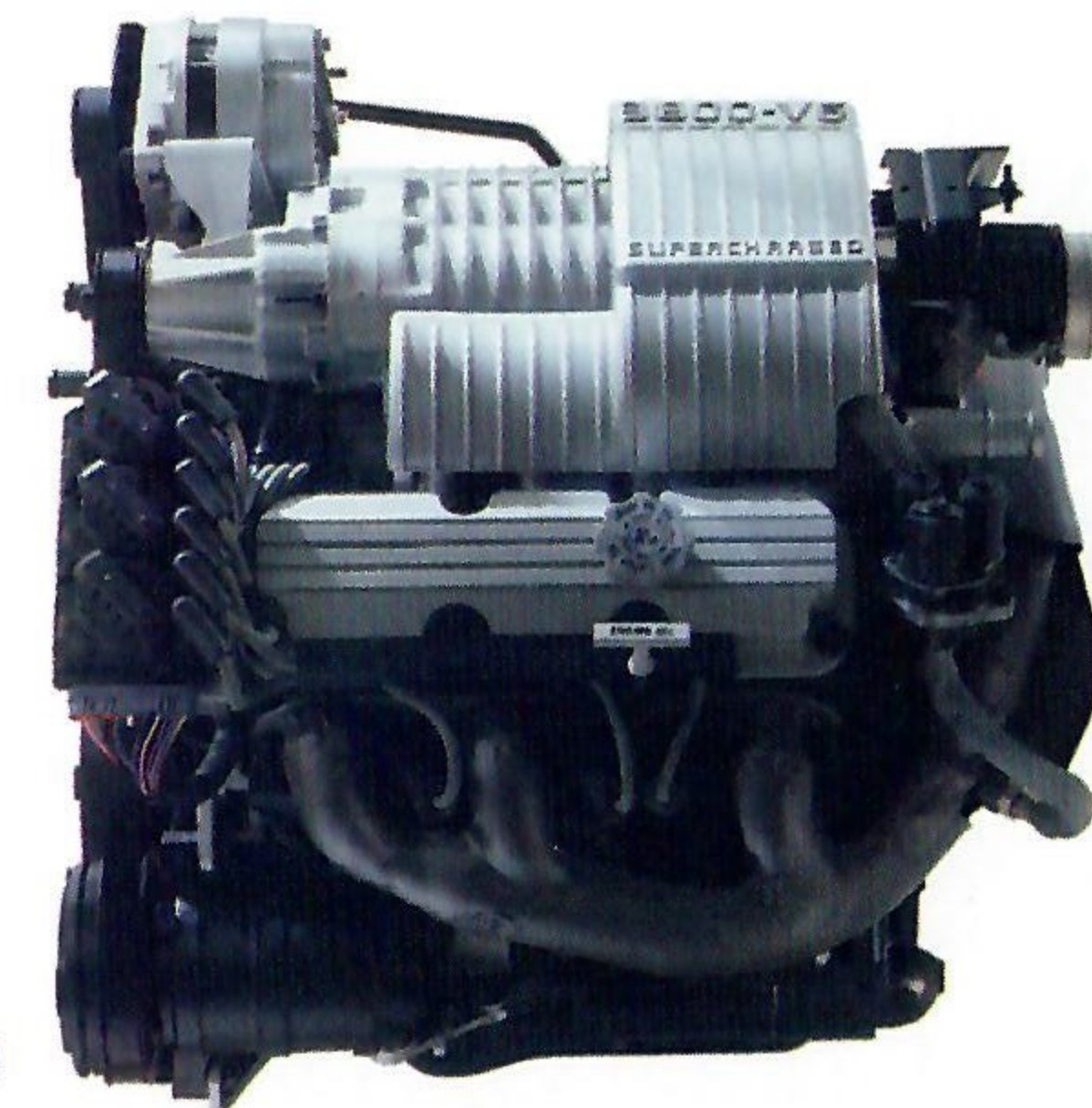
THE POWER BEHIND EVERY OLDSMOBILE

The heart of every automobile is its engine. And at the heart of every Oldsmobile is an engine intelligently engineered with a specific type of driver in mind. ¶ The result is a wide range of advanced powertrain choices. It's the 3800 V6 with a special balance shaft, for the driver who appreciates exceptionally smooth performance. ¶ It's the high-performance Vortec V6 with maximum torque, for those who need up to 4,500 pounds of towing capacity.* ¶ And it's the Twin Dual Cam V6—the largest 24-valve V6 in the world—for those looking for both power and fuel-efficiency (EPA estimated 17 mpg city, 27 mpg hwy in the Cutlass Supreme). ¶ In fact, it's fifteen different engines in all, including five completely new ones in the last two years alone—all designed to deliver an appropriate mix of performance characteristics. ¶ The result is more than the power to move you. It's the power—and the intelligence—to move you smoothly, quietly and with confidence. It's a big part of what the power of intelligent engineering is all about. ¶

*When properly equipped. Includes passengers, trailer, cargo and equipment.
**EPA fuel economy numbers not available at the time of printing. See your dealer.



Shown below, left to right, are four of the newest engines offered by Oldsmobile—the Supercharged 3800 V6 available in the Ninety Eight Touring Sedan (EPA estimated 17 mpg city, 27 mpg hwy), the Twin Dual Cam V6 available in the Cutlass Supreme (EPA estimated 17 mpg city, 27 mpg hwy), the High-Output Quad 4 standard in the Achieva Sport Coupe,** and the high-performance Vortec V6 available in the Bravada.**



INTELLIGENTLY ENGINEERED TO PROTECT YOU AND YOUR FAMILY

Of all the elements in the power of intelligent engineering, one stands apart. Our commitment to safety. ¶ This commitment is evident in the eight models offered with a standard driver-side air bag.

But air bags are just part of the story. Equally important is preventing an accident in the first place.

Oldsmobile has developed a number of safety features to protect occupants of all ages, including a driver-side air bag (above), standard on eight different models. Remember, safety belts should always be worn.



¶ Anti-lock braking, for example, provides added control in all weather and is standard on twelve models. Inside the vehicle, anyone with children will appreciate the assurance of rear door child-

security locks and a power window lockout switch—both of which help protect rear seat passengers, allowing the driver to concentrate on the road. ¶ Safety at Oldsmobile also means helping improve overall driver performance. With an Electrochromic mirror that automatically reduces glare.

And with steering wheel touch controls and the Head-Up Display, designed to help keep your hands on the wheel and eyes on the road. ¶ Some accidents, however, can't be avoided. That's why occupant



protection features have been built into every car—side-guard door beams, energy-absorbing

steering columns and instrument panels, and controlled

crush zones—all based on extensive crash-

testing. ¶ The ability to help protect you. It's another example of intelligent engineering. ¶



Safety is also the reassurance of unibody construction.





NINETY EIGHT TOURING SEDAN

NINETY EIGHT

While some luxury cars do all they can to isolate you from the road, the Ninety Eight Touring Sedan is intelligently engineered to allow you the luxury of controlling the road yourself. With features like an available 205-horsepower Supercharged 3800 V6 engine and standard four-wheel independent touring suspension that provide exceptional on-road performance. And with the available Advanced Traction Engineering™ system that provides added control in all types of weather. The Ninety Eight Touring Sedan—proof that luxury-car comfort and on-road performance do go hand-in-hand. ■



Advanced Traction Engineering™ is available on all Ninety Eight models, including the Regency Elite shown at left. It combines anti-lock brakes, front-wheel drive and available traction control.



All Ninety Eights provide a standard driver-side air bag shown here in the Regency Elite interior with available leather seating areas.



The Ninety Eight Regency offers an all-new choice in the Ninety Eight lineup.

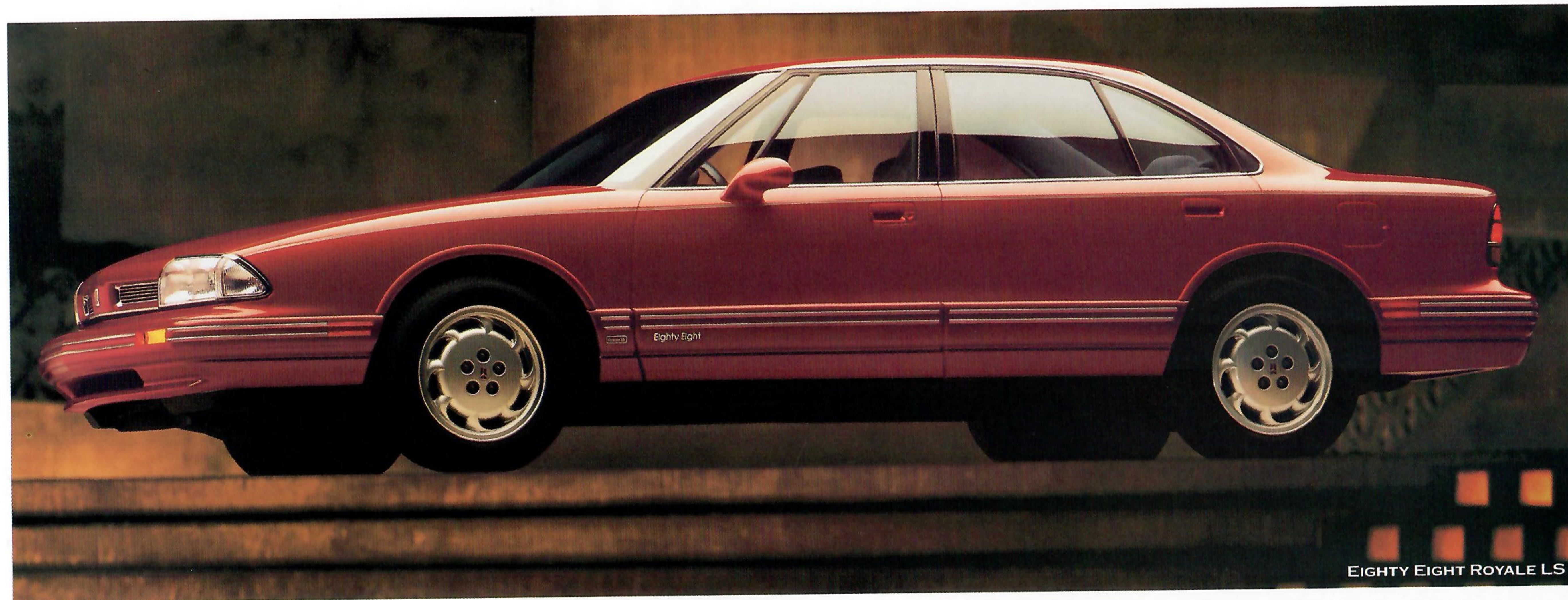


The available Supercharged 3800 V6 engine is new for 1992.

Inside every 1992 Ninety Eight Regency and Regency Elite, even the features you've come to expect on a luxury car have been engineered with added intelligence. The air conditioning system, for example, automatically maintains the temperature set by the driver, while the rear seat heating and cooling outlet is thoughtfully designed to keep all passengers comfortable. The seats not only feature six-way power adjustments, but are designed with special fabric that will last longer than most fine furniture. The electronic automatic transmission is monitored 360 times per second, so gears shift in a whisper. And the roof support pillars are pressure-filled with foam to reduce noise. With its exceptionally quiet performance, the 1992 Ninety Eight may just be the most intelligently luxurious car on the road. ■

NINETY EIGHT POWERTRAIN SPECIFICATIONS

ENGINE	SUPERCHARGED 3800 V6	3800 V6
Displacement	3800 (231 cu. in.)	3800 (231 cu. in.)
Horsepower	205 @ 4400	170 @ 4800
Torque	260 @ 2600	220 @ 3200
Availability	Optional on Touring Sedan	Standard on all Ninety Eight models
TRANSAXLE/SUSPENSION/HANDLING		
Transaxle	4-speed automatic electronic	
Front/rear	4-wheel independent, with MacPherson strut/coil spring	



EIGHTY EIGHT ROYALE

The all-new Eighty Eight Royale and Eighty Eight Royale LS were designed around a simple premise—combine the best of advanced technology with the best of traditional values. The result is a car with full-size room and comfort, including a trunk with 17.5 cubic feet of capacity—nearly one cubic foot more than last year. The result is also a car with meaningful technology that provides more precise handling, greater road control and advanced safety engineering. That's the power of intelligent engineering in a family sedan. ■



Standard on all models is a spacious six-passenger interior and a driver-side air bag. Shown here is the Royale LS with available leather seating areas.



Shown at left is the Eighty Eight Royale.



Traction control automatically detects wheel spin during 0-30 mph acceleration and helps to keep you in control of the road. It's available on the Eighty Eight Royale LS.

In addition to a spacious interior, the all-new Eighty Eight Royale is engineered to provide reassuring comfort. It starts with the 3800 V6 engine, which provides responsive power when you need it, and an electronic automatic transmission, which provides remarkably smooth and controlled shifting. In addition, the Eighty Eight Royale LS offers Advanced Traction Engineering,[™] incorporating anti-lock braking, front-wheel drive and available traction control. Other standard safety features designed into every model include a driver-side air bag, rear door child-security locks, outboard front and rear seat shoulder belts and a power window lockout switch. The all-new Eighty Eight Royale—intelligently engineered to meet the needs of today's contemporary family. ■

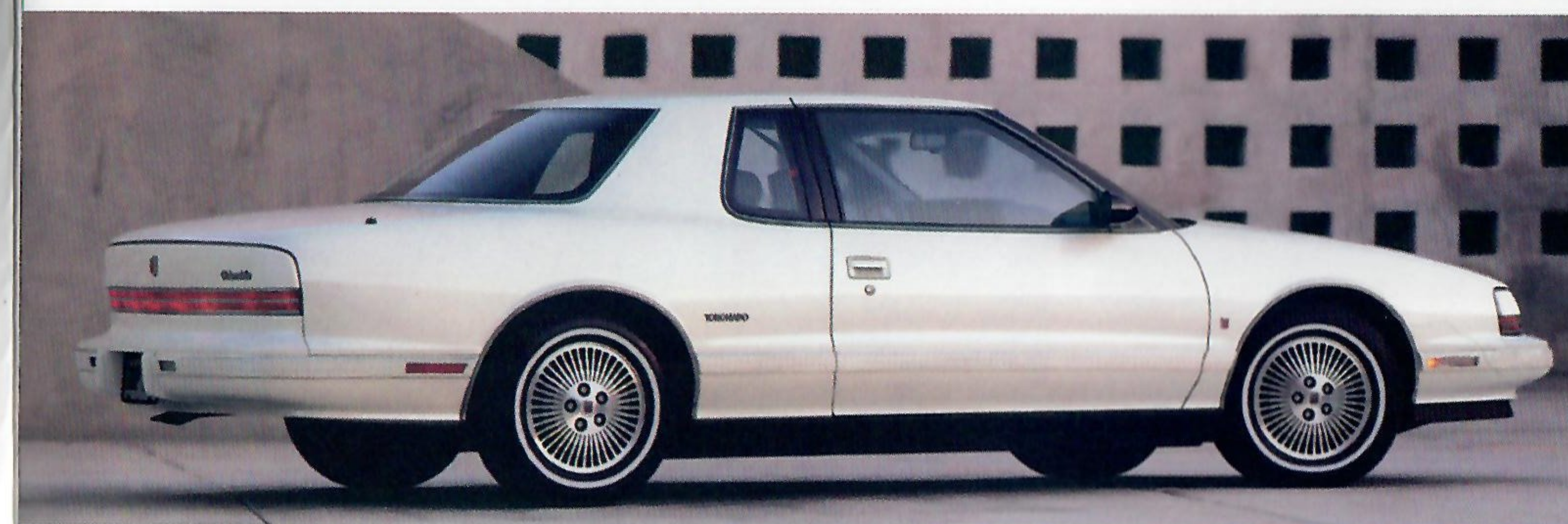
EIGHTY EIGHT POWERTRAIN SPECIFICATIONS

ENGINE	3800 V6
Displacement	3800 (231 cu. in.)
Horsepower	170 @ 4800
Torque	220 @ 3200
TRANSAXLE/SUSPENSION/HANDLING	
Transaxle	4-speed automatic electronic
Front/rear	4-wheel independent, with MacPherson strut/coil spring



TORONADO

There are luxury cars and there are performance cars. Then there's the Toronado and Toronado Troféo, Oldsmobile's ultimate luxury, performance coupes. Both were designed to provide powerful performance and comfortable luxury. A tuned port, fuel-injected 3800 V6 helps provide the performance, while a comfort-filled driver-oriented cockpit with full analog instrumentation contributes to the luxury. Performance and luxury. These are essential elements to the driving enthusiast's experience. And they're also what you'll experience in every Toronado. Drive one and become a purist yourself. 🚗



(Top) The Toronado Troféo interior offers an available mobile phone, fully integrated to provide hands-free operation.

(Bottom) Shown here is the 1992 Toronado that comes with front bucket seats standard or with an available 55/45 bench seat.

How long has it been since driving an automobile was truly an exciting driving experience. Both the Toronado and Toronado Troféo will enable you to recapture that driving excitement. Excitement, in this case, means an engine that produces 170 horsepower. It's also the advanced control of an anti-lock braking system. The added refinement of an electronically controlled automatic transmission. And the comfort of a six-way power driver's bucket seat with recline, lumbar and thigh support adjustments, as well as standard leather inserts on the Toronado Troféo. In fact, the Troféo is so well-equipped, only nine options are available. Among them is a visual information center that works with an on-board computer to provide over 50 different display choices. All in all, the Toronado provides an exhilarating level of technology. And an exhilarating level of performance. 🚗



TORONADO POWERTRAIN SPECIFICATIONS

ENGINE	3800 V6
Displacement	3800 (231 cu. in.)
Horsepower	170 @ 4800
Torque	220 @ 3200

TRANSAXLE/SUSPENSION/HANDLING

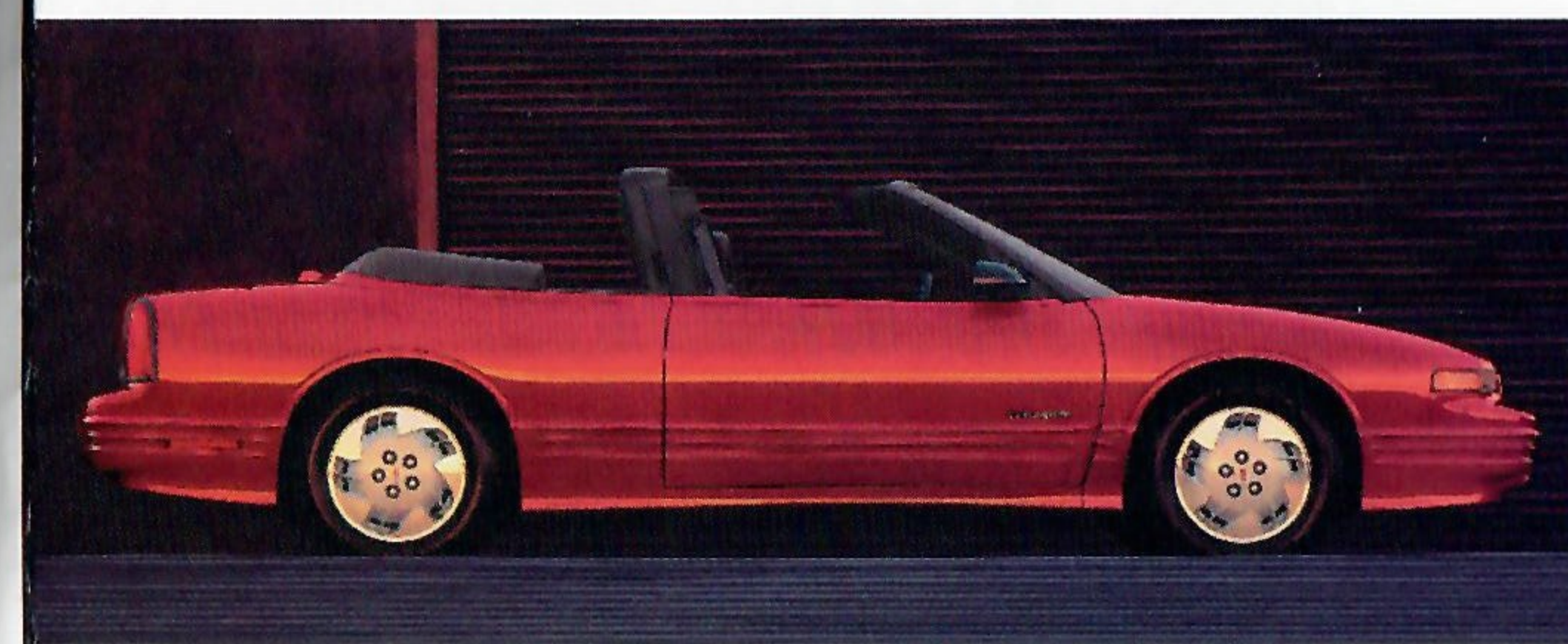
Transaxle	4-speed automatic electronic
Front/rear	4-wheel independent with MacPherson strut/transflex fiberglass leaf spring



CUTLASS SUPREME INTERNATIONAL SERIES

CUTLASS SUPREME

Spirited. Responsive. Innovative. All these words describe the Cutlass Supreme. But the real message can be found in this car's engineering. It starts with the engine, either the world's largest 24-valve V6, standard on the International Series, or the surprisingly efficient 3.1-liter V6, standard on all other models (EPA estimated 19 mpg city, 27 mpg hwy). All models feature four-wheel disc brakes for sure, stable stopping power and four-wheel independent suspension that provides a smooth ride. But the most important feature every Cutlass Supreme provides is an inspired driving experience. ■

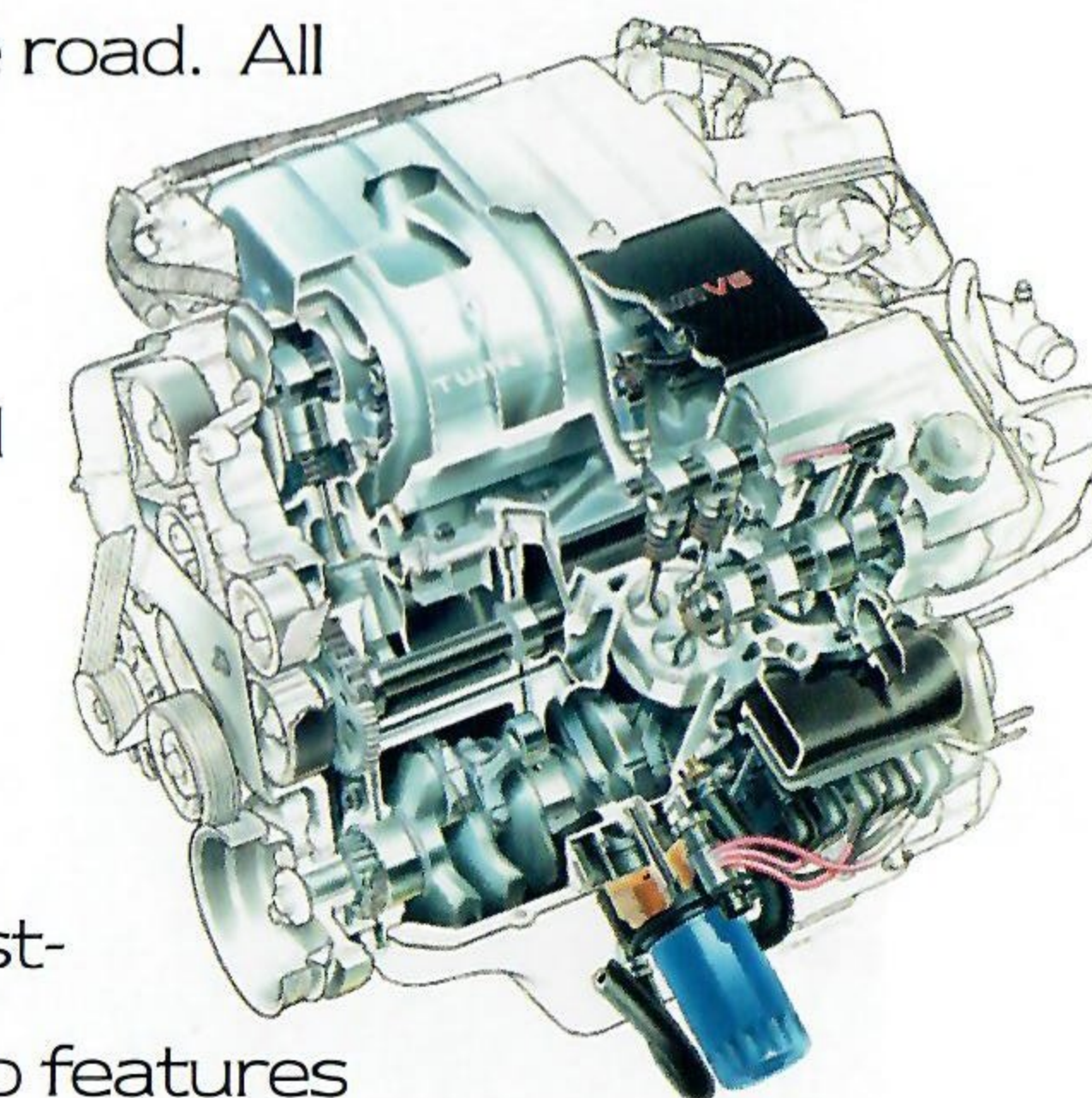


(Top) Cutlass Supreme SL coupe—also available as a four-door sedan.
(Middle) The Cutlass Supreme S sedan provides six-passenger seating and is also available as a two-door coupe.
(Bottom) Cutlass Supreme convertible.



The International Series coupe interior has been redesigned to provide even greater cushioning for added comfort.

One of the most intelligent things about every Cutlass Supreme is the way its technology is presented. The International Series, for example, features steering wheel touch controls and a Head-Up Display that allow you to keep your hands on the wheel and eyes on the road. All models feature two-sided galvanized steel which, along with a stainless steel exhaust system, provides an outstanding level of corrosion protection and eliminates the need for rust-proofing. Every model also features recontoured seats with four-way driver-side adjustment for added comfort. Settle into a Cutlass Supreme and discover this car's intelligent combination of advanced technology for yourself. ■



CUTLASS SUPREME POWERTRAIN SPECIFICATIONS

ENGINE	3.4-LITER V6	3.1-LITER V6
Displacement	3.4-liter (207 cu. in.)	3.1-liter (191 cu. in.)
Horsepower	210 @ 5200 (manual) 200 @ 5000 (auto.)	140 @ 4400 215 @ 4000
Torque	215 @ 4000	185 @ 3200
Availability	Standard on International Series, optional on Supreme S and SL	Standard on S, SL and Convertible, optional on International Series

TRANSAXLE/SUSPENSION/HANDLING

Transaxle	5-speed manual or 4-speed automatic	3-speed automatic or 4-speed automatic
Front/rear	4-wheel independent with MacPherson strut/transverse fiberglass leaf spring	



CUTLASS CIERA SL

CUTLASS CIERA

Reliability and durability are two of the most talked-about qualities in today's marketplace. But rather than just claim these qualities, the Cutlass Ciera possesses tangible proof of them in the only area where it really matters—real-world performance. And what's more revealing than the fact that 96% of all Cutlass Cieras ever sold are still on the road (based on R.L. Polk registrations 1981-1990). If that's the kind of engineering that impresses you, then you'll be impressed with the Cutlass Ciera, an intelligently proven family sedan. Bring one home and become part of a true success story. ■



Shown above is the Cutlass Ciera S four-door sedan.



Designed with six-passenger seating in mind, the Cutlass Ciera SL features a 55/45 divided cloth front bench seat with power recliners.

One of the most important features both the Cutlass Ciera SL and S models have to offer is proven value. And over the years, Oldsmobile has improved on that idea, incorporating more than 7,000 refinements. So today, the Cutlass Ciera makes more sense than ever. For 1992, power door locks are standard and a remote control lock system is available, enabling you to unlock the doors, turn on an interior light and open the trunk from up to 15 feet away. Little things, sure. But they all add up in a big way. Other standard features also contribute to the Cutlass Ciera's philosophy of providing functional, refined performance. These include the six-passenger interior, front-wheel drive, automatic transmission, air conditioning and a 15.8-cubic-foot trunk. Engineered for proven endurance—that's the 1992 Cutlass Ciera. ■



CUTLASS CIERA POWERTRAIN SPECIFICATIONS

ENGINE	2.5-LITER TECH IV	3300 V6
Displacement	2.5-liter (151 cu. in.)	3300 (204 cu. in.)
Horsepower	110 @ 5200	160 @ 5200
Torque	135 @ 3200	185 @ 2000
Availability	Standard on Ciera S	Standard on SL, optional on Ciera S

TRANSAXLE/SUSPENSION/HANDLING

Transaxle	3-speed automatic	3-speed automatic or 4-speed automatic
Front/rear	MacPherson strut/coil spring	



ACHIEVA SPORT COUPE

ACHIEVA

When designing the all-new 1992 Achieva, two goals were kept in mind. Make it smart. And make it fun. To see how these two ideas came together in a totally integrated, well-thought-out new car, take a look at an Achieva Sport Coupe, Achieva SL or Achieva S. Or better yet, drive one. You'll experience the intelligence of standard features like anti-lock brakes and rear seat heating outlets, along with the fun of four highly responsive engine choices and a driver-oriented, wraparound instrument panel. Smart and fun—that's the all-new Achieva, another example of intelligent engineering. 🚗



The Achieva interior comes with fully adjustable reclining front bucket seats with standard driver-side manual lumbar adjustment.

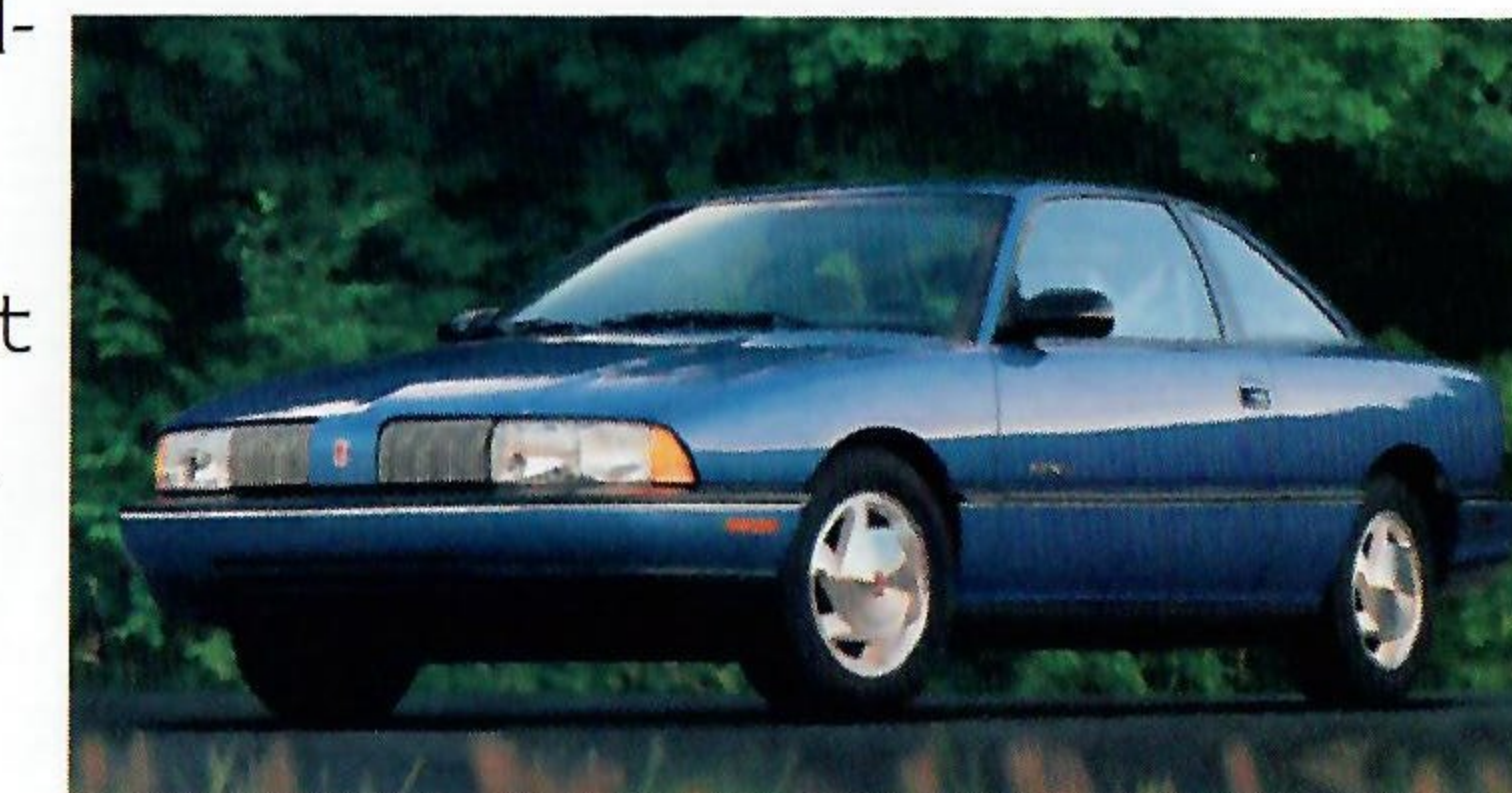


Shown at left is the Achieva SL four-door sedan; shown at right is the Achieva S two-door coupe.



The wraparound instrument panel is standard on all models and features full analog instrumentation. The leather-wrapped steering wheel is standard on the Achieva Sport Coupe.

All Achieva coupes and sedans were created to offer many of the features you'd expect only from larger, more expensive cars. Features like automatic door locks, corrosion-resistant two-sided galvanized steel and available Computer Command Ride which can adjust to conditions of the road. But at its heart, the all-new Achieva is still a compact car. And that means providing qualities like nimble and responsive handling and an affordable price. If all this is something you expect to find in your next car, then the Achieva Sport Coupe, Achieva SL and Achieva S were designed with you in mind. They provide the upscale features you've come to expect in an Oldsmobile, designed into a smaller package. 🚗



ACHIEVA POWERTRAIN SPECIFICATIONS

ENGINE	QUAD OHC	QUAD 4	HIGH-OUTPUT QUAD 4	3300 V6
Displacement	2.3-liter	2.3-liter	2.3-liter	3300 (204 cu. in.)
Horsepower	120 @ 5200	160 @ 6200	180 @ 6200	160 @ 5200
Torque	140 @ 3200	155 @ 5200	160 @ 5200	185 @ 2000
Availability	Standard on Achieva S	Standard on Achieva SL, optional on S and with Sport Coupe package	Standard with Sport Coupe package	Optional on Achieva SL and with Sport Coupe package

TRANSAXLE/SUSPENSION/HANDLING

Transaxle	5-speed manual or 3-speed automatic	3-speed automatic	5-speed manual	3-speed automatic
Front/rear	MacPherson strut/coil spring			



CUTLASS CRUISER

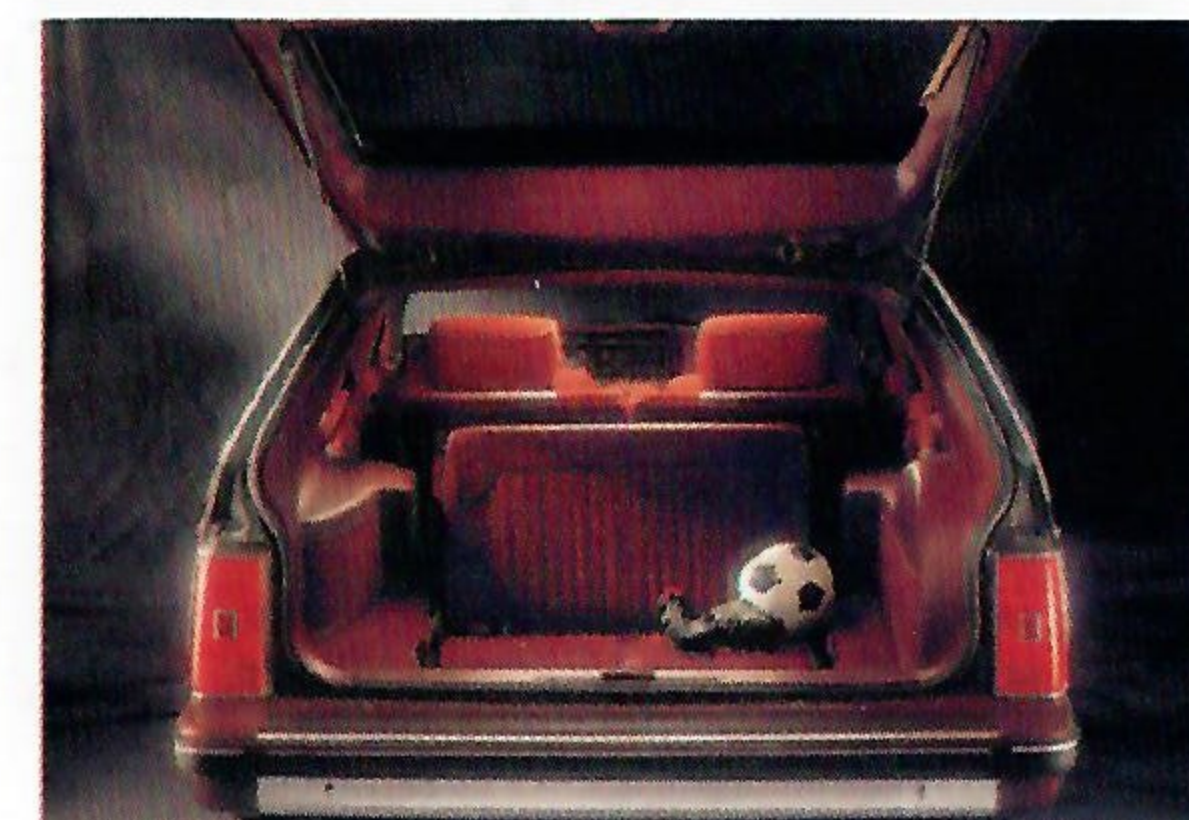
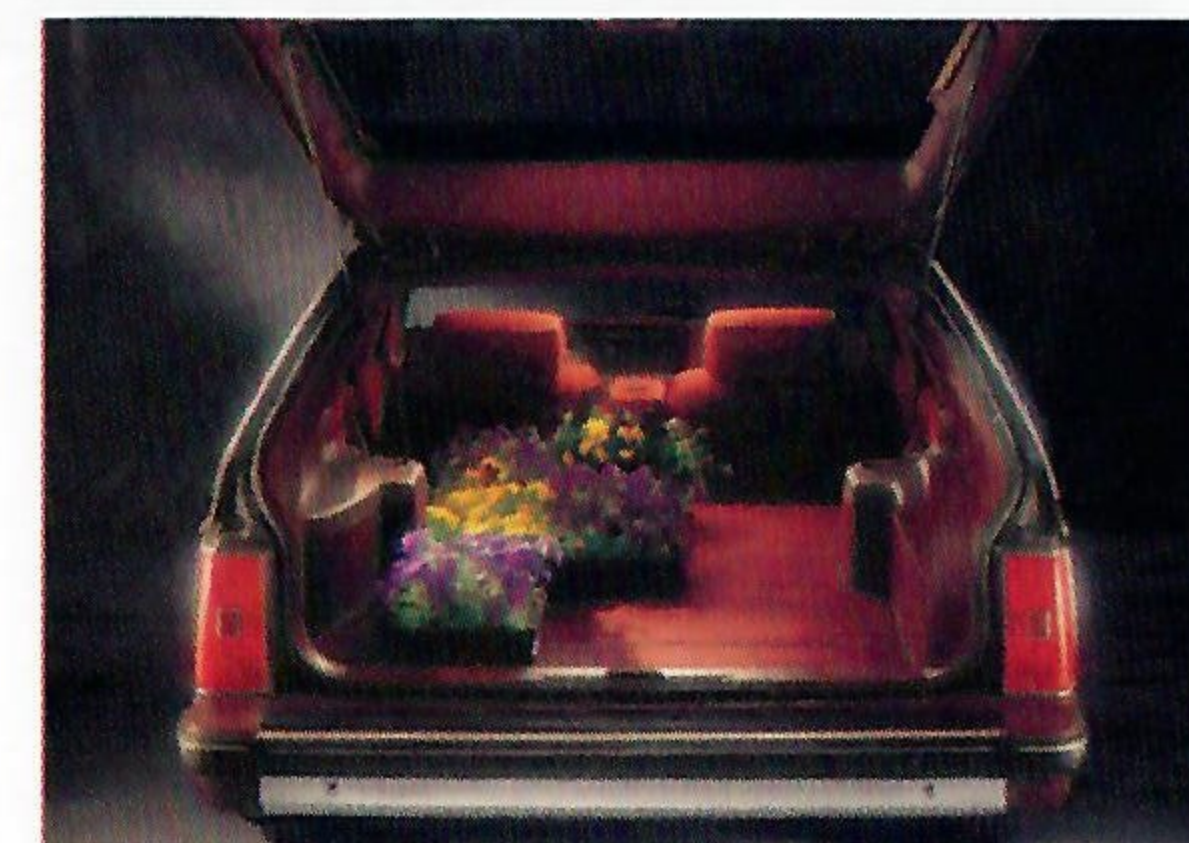
The beauty of intelligent engineering is how it applies in so many places. It's something you'll find throughout the Oldsmobile product lineup. The Cutlass Cruiser, for example, takes concepts like practicality and versatility to a higher level. Its rear seats fold down flat for more than 74 cubic feet of cargo space. There's also an added storage space designed beneath the rear floor. And the rear tailgate provides an opening of more than four feet, enabling you to easily load and unload objects of all shapes and sizes. So, no matter what you're carrying, you'll find the Cutlass Cruiser S and SL are engineered for the long run. ■



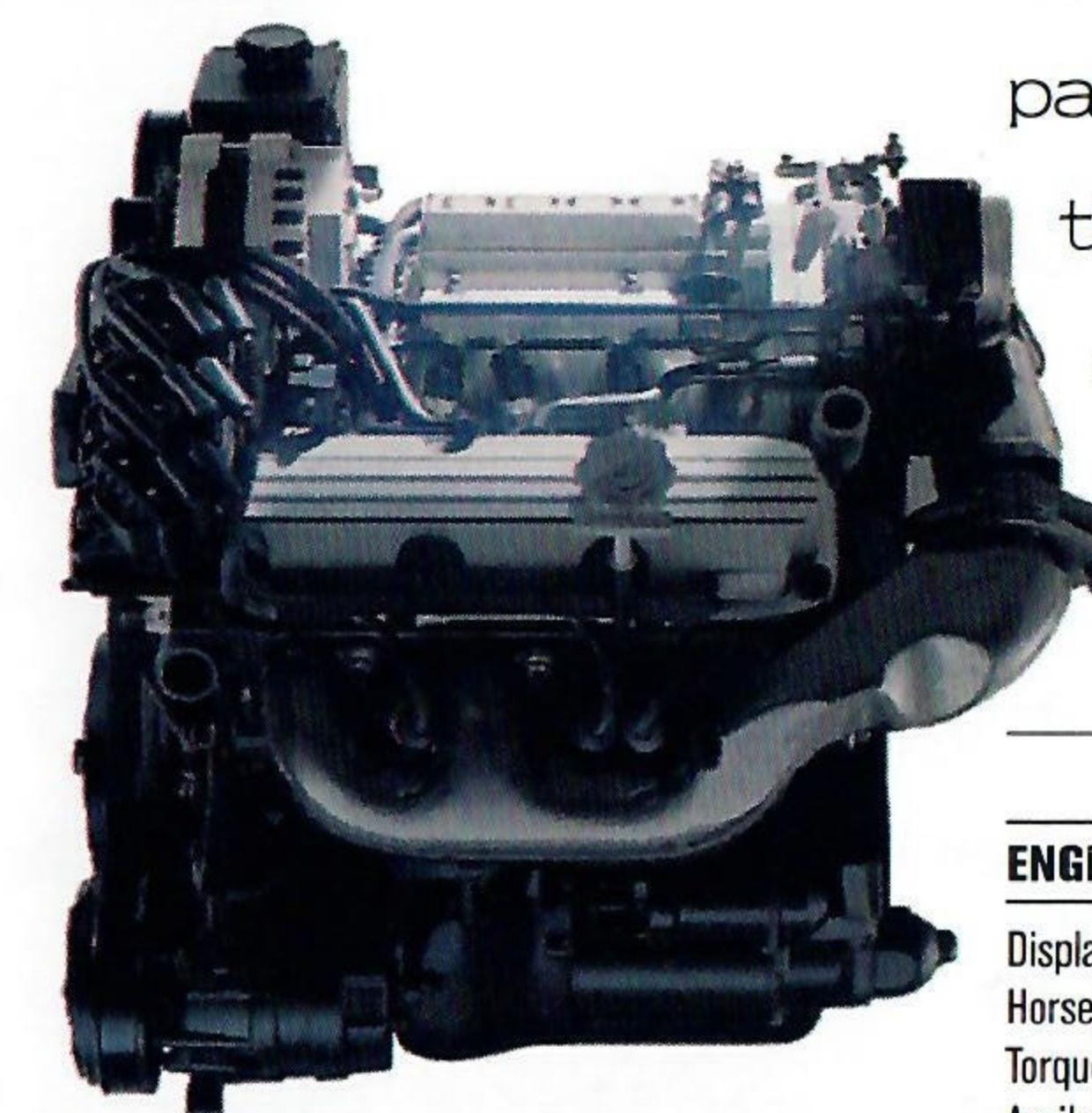
Shown above is the Cutlass Cruiser S.



A lift-up rear window, 74 cubic feet of cargo space and a third seat are standard features on the Cutlass Cruiser SL.



The 3300 multiport injected V6 engine is standard on the Cutlass Cruiser SL.



The Cutlass Cruiser is designed to take the human needs of the driver into account. For example, while all wagons provide added cargo capacity, the Cutlass Cruiser features several different lift-gate options that make loading your family's belongings an effortless process. A flip-up rear window makes loading small lightweight packages easier, while the complete lift gate also opens up to make large item storage more convenient. Should additional storage be necessary, a rooftop luggage carrier is standard on the SL. And cargo isn't the only thing the Cutlass Cruiser SL can carry comfortably. A rear third seat is also standard, enabling you to transport up to eight passengers. Plus, the 3300 V6 engine provides all the power you'll ever need. In short, this vehicle's ability to carry both people and cargo so effectively might just be its most memorable feature. Something you'd expect from an Oldsmobile. ■

CUTLASS CRUISER POWERTRAIN SPECIFICATIONS

ENGINE	2.5-LITER TECH IV	3300 V6
Displacement	2.5-liter (151 cu. in.)	3300 (204 cu. in.)
Horsepower	110 @ 5200	160 @ 5200
Torque	135 @ 3200	185 @ 2000
Availability	Standard on Cruiser S	Standard on Cruiser SL, optional on Cruiser S

TRANSAXLE/SUSPENSION/HANDLING

Transaxle	3-speed automatic	3-speed automatic or 4-speed automatic
Front/rear		MacPherson strut/coil spring



CUSTOM CRUISER

You would expect a full-size wagon to be spacious. And with 91.9 cubic feet of cargo space and comfortable eight-passenger seating, the 1992 Custom Cruiser is certainly that. In addition, the Custom Cruiser is designed with the reassurance of many standard safety and security features. Features like a driver-side air bag, an anti-lock braking system, rear door child-security locks and available remote control locks. This intelligently engineered combination of spacious comfort and reassuring safety and security features is what the full-size Custom Cruiser wagon is all about. 🚗



A 55/45 divided bench front seat, driver-side air bag and full analog instrumentation are all standard on the Custom Cruiser.



With all seats folded flat, 91.9 cubic feet of cargo space is provided.

Luxury features take on an expanded presence inside the Custom Cruiser. Here, luxury can be defined by standard air conditioning, a solar control windshield and full analog instrumentation. And also by the luxury of available leather in the seating areas, and an available compact disc player. Or perhaps luxury should be defined by the series of practical luxuries which are also part of the Custom Cruiser's design. Features like a rooftop luggage rack that can adjust to the size of what you're carrying and seats that fold down flat to provide a convenient and impressive cargo area. However it's described, the 1992 Custom Cruiser provides function at its finest in an intelligently engineered, full-size wagon. Drive one yourself and you'll discover a few added luxuries of your own. 🚗



CUSTOM CRUISER POWERTRAIN SPECIFICATIONS

ENGINE	5.0-LITER V8	5.7-LITER V8
Displacement	5.0-liter (305 cu. in.)	5.7-liter (350 cu. in.)
Horsepower	170 @ 4000	180 @ 4400
Torque	255 @ 2400	300 @ 2400
Availability	Standard	Optional

TRANSAXLE/SUSPENSION/HANDLING

Transaxle	4-speed automatic	4-speed automatic
Front/rear	Heavy-duty, coil spring/coil spring	Heavy-duty, coil spring/coil spring



SILHOUETTE

As you'll quickly find out, the Silhouette is engineered for all types of drivers and driving situations. So whether you're dropping off a team of kids or picking up the team's equipment, the Silhouette will accommodate you. And as you'll also discover, the Silhouette's features separate it from many other minivans. Standard features like anti-lock brakes and variable-rate rear springs that ensure a comfortable ride, and available features like a new 3800 V6 engine that delivers smooth, effortless power and also increases towing capacity. Engineered for space and style—that's the 1992 Silhouette. ■



A number of seating configurations provide a variety of passenger and cargo hauling options.

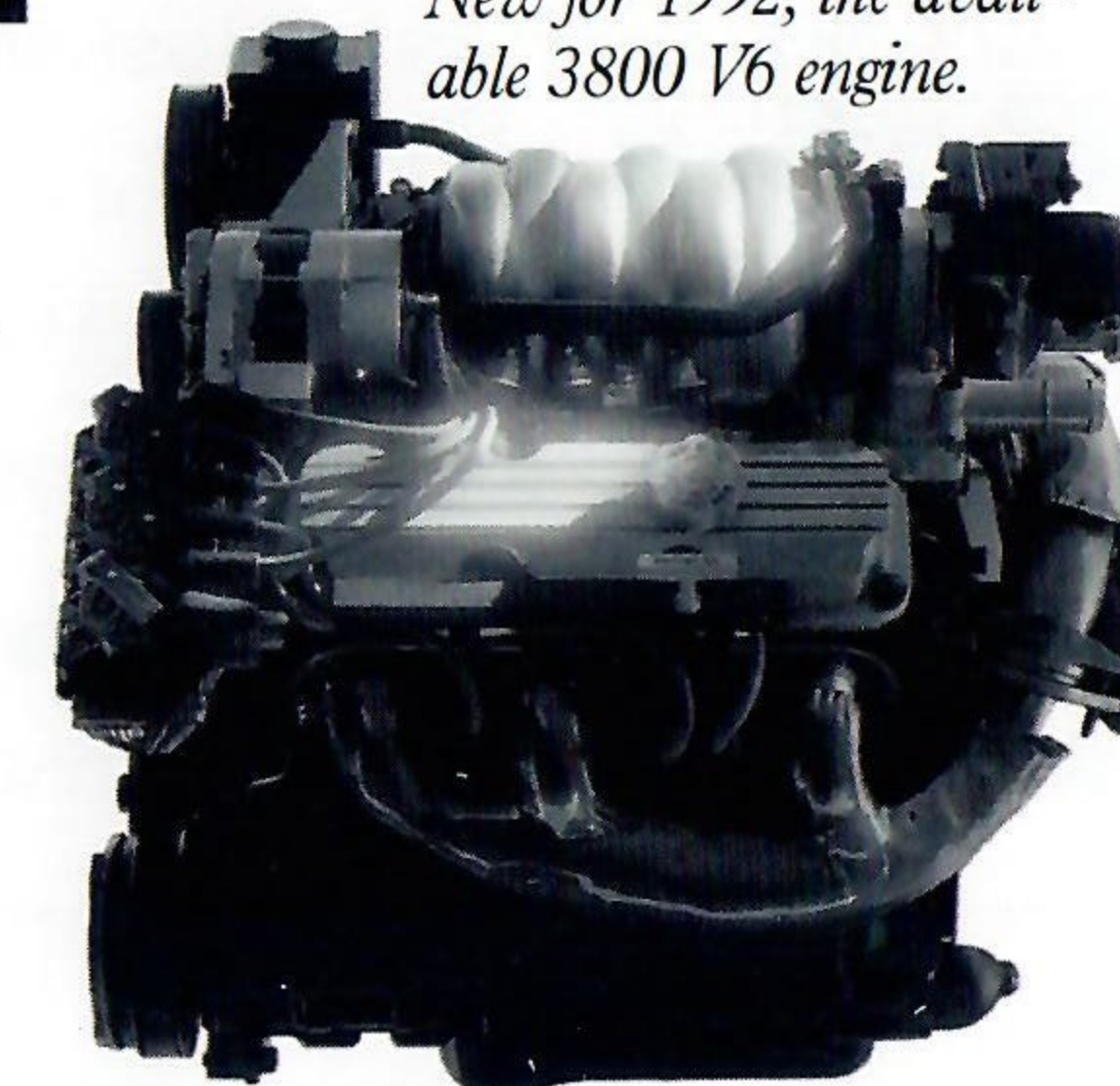


Complete instrumentation is offered with the standard rallye instrument panel cluster.



The overhead console provides an added storage compartment, as well as map lights and a digital compass and outside temperature display.

New for 1992, the available 3800 V6 engine.



Sit inside an Oldsmobile Silhouette and you'll quickly make a very important discovery—the functionality of a minivan also comes with the comfort of a luxury sedan. Start with the driver's seat—it comes with a new four-way adjuster for added comfort. All seats are modularly contoured with available leather seating areas. And at only 34 pounds each, they can easily be removed to adjust to your passenger and cargo hauling needs, providing an endless array of seating arrangements. The last two rows of seats can also be folded down to become tables with handy cup holders included within their design. Other standard features include electronic air conditioning with front and rear outlets, a solar control windshield and the industry's first integrated roof antenna that's totally concealed beneath the roof. Whatever the driving situation, the 1992 Silhouette is intelligently designed to fit your lifestyle quite comfortably. ■

SILHOUETTE POWERTRAIN SPECIFICATIONS

ENGINE	3.1-LITER V6	3800 V6
Displacement	3.1-liter (189 cu. in.)	3.8-liter (231 cu. in.)
Horsepower	120 @ 4200	165 @ 4300
Torque	175 @ 2200	220 @ 3200
Availability	Standard	Optional
TRANSAXLE/SUSPENSION/HANDLING		
Transaxle	3-speed automatic	4-speed automatic electronic
Front/rear	MacPherson strut/variable-rate coil spring	



BRAVADA

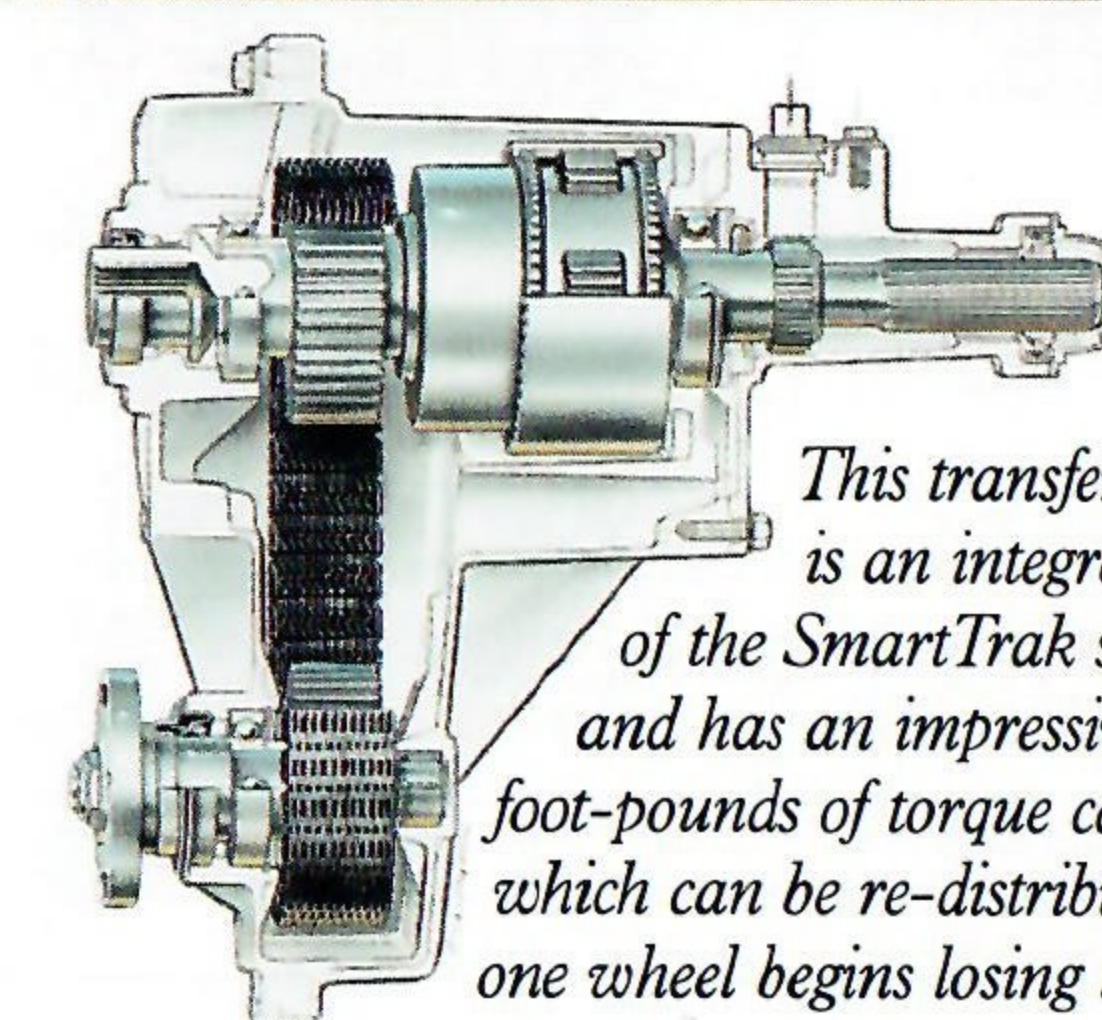
Like most sport utility vehicles, the Bravada is engineered to perform on all types of roads. Unlike others, however, its exclusive SmartTrak™ system automatically adjusts to road conditions, making it one of the smartest vehicles around. This combination of full-time all-wheel drive and anti-lock braking sends power to the wheels that need it—without the need to shift or push a button. In fact, this process occurs so smoothly that you probably won't even notice it. But on wet, slippery or snow-covered roads, the Bravada's ability to help you control the unexpected will be quite apparent. ■



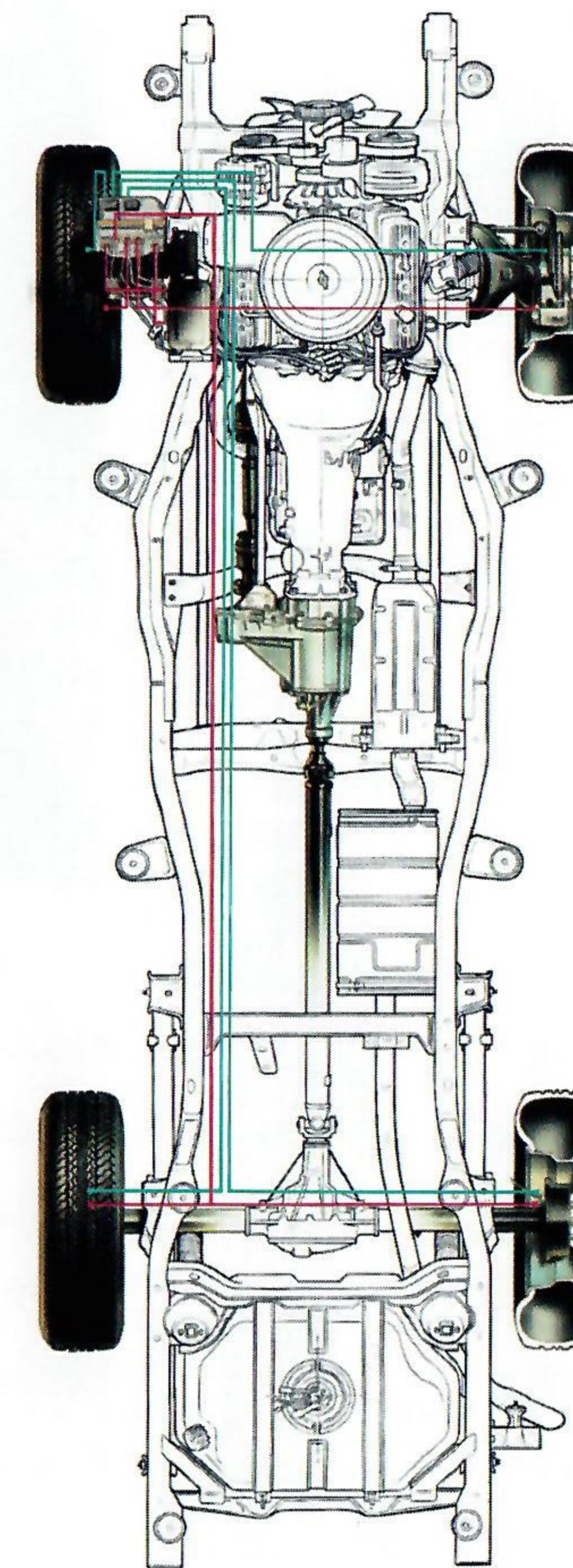
Front reclining bucket seats and a folding rear bench seat, shown here with available leather seating areas, provide five-passenger comfort. When folded down, 74 cubic feet of cargo space is provided.



With a 4.3-liter Vortec V6 engine and available towing package, the Bravada can tow up to 4,500 pounds (includes passengers, trailer, cargo and equipment).



This transfer case is an integral part of the SmartTrak system and has an impressive 1,500 foot-pounds of torque capacity, which can be re-distributed if one wheel begins losing traction.



The Bravada is designed to provide the rugged performance characteristics of a truck, along with the ride and comforts of a luxury sedan. On the one hand, you'll appreciate the available 200-horsepower, high-performance Vortec V6 engine, standard unitized, full-frame construction and Bilstein gas-assisted shock absorbers that help Bravada ride comfortably on even the roughest of roads. On the other hand, you'll experience many standard luxury features, including cruise control, power windows and door locks, a leather-wrapped steering wheel and air conditioning. In fact, the Bravada is so well-equipped, only nine options are available, including available leather in the seating areas. Designed to help keep you comfortable on the inside as well as on the outside, the 1992 Bravada is a good example of the power of intelligent engineering. ■



BRAVADA POWERTRAIN SPECIFICATIONS

ENGINE	4.3-LITER V6	HIGH-PERFORMANCE 4.3-LITER V6
Displacement	4.3-liter (262 cu. in.)	4.3-liter (262 cu. in.)
Horsepower	160 @ 4000	200 @ 4500
Torque	230 @ 2800	260 @ 3600
Availability	Standard	Optional

TRANSAXLE/SUSPENSION/HANDLING

Transaxle	4-speed automatic	4-speed automatic
Front/rear		Torsion bar/leaf spring

THE OLDSMOBILE EDGE



The Oldsmobile Edge is the most comprehensive owner satisfaction program in the industry. It provides a series of benefits during your entire ownership experience.*

‡ The Purchase Experience—The Oldsmobile Edge begins with

Guaranteed Satisfaction, which

gives you 30 days/1,500 miles to

01500

return your new Oldsmobile for full credit toward the purchase or lease of another new Oldsmobile.

‡ The Service Experience—The Oldsmobile Edge makes warranty service as smooth as possible. Beginning with the **GM Bumper-to-**



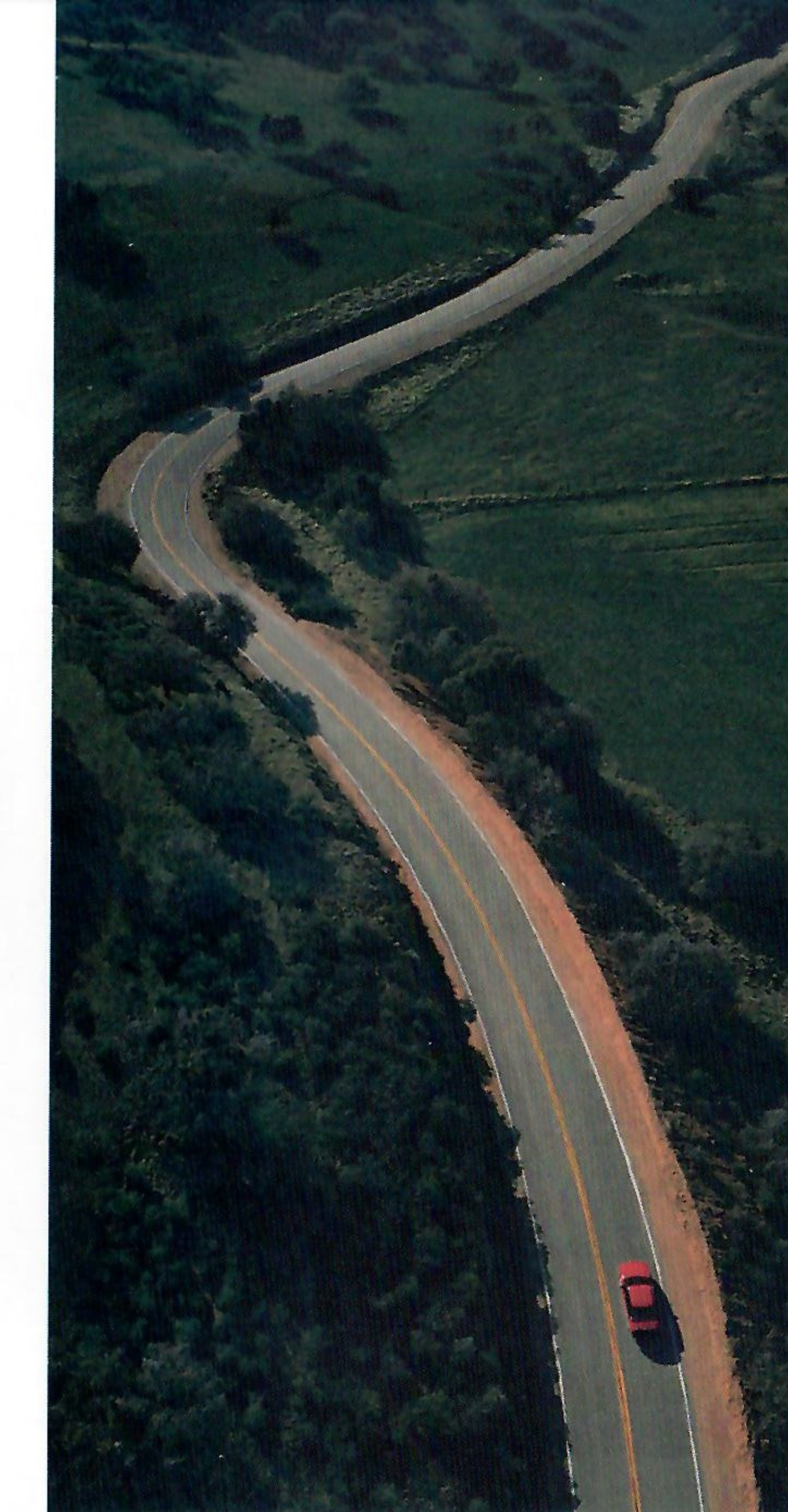
Bumper Plus Warranty, developed

to cover every part of your vehicle except tires, which are already covered by their manufacturer.

And there are no deductible charges during the warranty period, which lasts for 3 years/36,000 miles, whichever comes first (see your dealer for terms of this limited warranty).

When warranty-covered service is required, a new program for 1992 called **Courtesy Transportation**

provides a shuttle ride of up to 10 miles to your home or office during same-day service, or reimbursement of up to \$30 for a rental car or cab



fare if overnight service is required.

‡ The Driving

Experience—If you run

out of gas or need

similar assistance, call

our 24-hour toll-free

Roadside Assistance

number and help will

soon be on the way. If

your vehicle becomes

disabled more than

150 miles from home,

you'll be provided with up to \$500 in trip interruption re-

imbursements.

‡ Added Owner Privileges—You'll have

access to a computerized trip routing service, including

companion maps. If you need service while on a trip, our

toll-free number helps you find the nearest Oldsmobile

dealer.

‡ The Oldsmobile

Edge. Just one more example

of intelligent engineering. ‡



Important—A Word About This Catalog: We have tried to make this catalog as comprehensive and factual as possible. We reserve the right, however, to make changes at any time, without notice, in prices, colors, materials, equipment, specifications, models and availability. Since some information may have been updated since the time of printing, please check with your Oldsmobile dealer for complete details.

‡ **A Word About Engines:** Oldsmobiles are equipped with engines produced by different operating units of General Motors, its subsidiaries or suppliers to GM worldwide.

‡ **A Word About Assembly:** Oldsmobiles are assembled by different operating units of General Motors, its subsidiaries or suppliers to GM worldwide. Oldsmobiles incorporate thousands of components produced by different operating units of GM, its subsidiaries or suppliers to GM worldwide. We sometimes find it necessary to produce Oldsmobiles with different or differently sourced components than originally scheduled. All such components have been approved for use in Oldsmobiles and will provide the quality performance associated with the Oldsmobile name. Since some options may be unavailable when your vehicle is assembled, we suggest that you verify that your vehicle includes the equipment you ordered or, if there are changes, that they are

acceptable to you.

‡ **A Word About Updated Service Information:** Oldsmobile regularly sends its dealers useful service bulletins about Oldsmobile products. Oldsmobile monitors product performance in the field. We then prepare bulletins for servicing our products better. Now you can get these bulletins, too. Ask your dealer. To get ordering information, call toll-free 1-800-551-4123.

‡ **A Word About Warranty:** The GM 3-year/36,000 mile Bumper-to-Bumper Plus Warranty covers repairs for any new Oldsmobile, including labor and parts, to correct any defects in material or workmanship occurring during the warranty period. The complete vehicle (except tires, which are covered by their manufacturer) will be covered for three years or 36,000 miles, whichever comes first, with no deductible charges. Body sheet metal rust-through from corrosion is covered for six years or 100,000 miles, whichever comes first. There is also no deductible for rust-through repairs. See your Oldsmobile dealer for terms of this limited warranty.

‡ **A Word About Corrosion Protection:** Oldsmobiles are designed and built to resist corrosion. All body sheet metal components are warranted against rust-through from corrosion for six years/100,000 miles. Application of additional rust-inhibiting materials is not required under the corrosion coverage.

‡ **Passenger Car**

Occupant Protection: Automatic safety belt system for driver and right front passenger on all Achieva, Cutlass Ciera, Cutlass Cruiser and Cutlass Supreme models. Supplemental Inflatable Restraint, driver only, with manual lap/shoulder safety belts for the driver and right front passenger on all Custom Cruiser, Eighty Eight, Ninety Eight and Toronado models. Both including visual and audible warning system, Manual lap/shoulder safety belts, outboard rear seat positions, Manual lap safety belts, center front/rear seat positions, where applicable, Energy-absorbing steering column, Energy-absorbing instrument panel, Energy-absorbing seat back tops, front, Interlocking door latches, Inertia-locking, folding front seat backs on two-door models, Laminated windshield glass with urethane bonding, Side-guard door beams, Passenger-guard inside door lock handles, Safety armrests, Adjustable head restraints, driver and right front passenger, Break-away inside rearview mirrors, Security door lock and door retention components, Power door locks with automatic locking features on all Toronado, Cutlass Ciera, Custom Cruiser, Ninety Eight, and Cutlass Supreme models, Tempered safety glass, side windows; also rear windows, Front and rear crush zones, Child-security locks on all Ninety Eight, Eighty Eight, Achieva sedan and Custom

Cruiser models, Pressure lock radiator cap, Dual sun visors, Self-aligning steering wheel (Achieva).

‡ **Bravada, Silhouette Occupant Protection:** Manual lap/shoulder safety belts, outboard front and rear seat positions, Manual lap safety belts, center front/rear seat positions, where applicable, Energy-absorbing steering column, Self-aligning steering wheel (Bravada), Energy-absorbing instrument panel, Energy-absorbing seat back tops, front, Interlocking door latches, Safety armrests, Breakaway inside rearview mirrors, Security door locks and door retention components, Laminated windshield glass, Tempered safety glass, side windows; also rear windows, Dual sun visors, Pressure relief fuel cap.

‡ **Passenger Car Accident Avoidance:** Side marker lamps and reflectors, Parking lamps that illuminate with headlamps, Four-way hazard warning flashers, Back-up lamps, Center high-mounted stop lamp, Directional signal control with lane-change feature, Windshield defroster, washer and multi-speed wipers, Inside manual day/night rearview mirror, Outside left and right rearview mirrors, Brake system with dual master cylinder and warning light, Starter safety switch, Dual action hood latch, Low-glare finish on inside windshield moldings, wiper arms and blades, metallic steering wheel surfaces, Illuminated heater and defroster controls, Illuminated

windshield wiper and washer controls (if on IP), Tires with built-in tread wear indicators, Safety road wheel rims, Pressure relief fuel cap, Audible brake lining wear indicators, disc brakes, Anti-lock brakes on all Ninety Eight, Toronado, Eighty Eight Royale LS, Custom Cruiser and Achieva models, Door warning light/reflectors, Brake/transmission shift interlock on all Ninety Eight, Eighty Eight, Toronado, Achieva and Custom Cruiser models.

‡ **Bravada, Silhouette Accident Avoidance:** Side marker lamps and reflectors, Parking lamps that illuminate with headlamps, Four-way hazard warning flashers, Back-up lamps, Directional signal control with lane-change feature, Windshield defroster, washer and multi-speed wipers, Outside left and right rearview mirrors, Brake system with dual master cylinder and warning light, Starter safety switch, Dual action hood latch, Low-glare finish on inside windshield moldings, wiper arms and blades, metallic steering wheel surfaces, Illuminated heater and defroster controls, Tires with built-in tread wear indicators, Inside manual day/night rearview mirror, Audible brake lining wear indicators, disc brakes, Anti-lock braking system (Bravada).



© 1991 GM Corp. All Rights Reserved. Printed in USA 9/91

Ciera, Cutlass Ciera, Cutlass Supreme, Eighty Eight, Royale, Custom Cruiser, Ninety Eight, Regency, Trofeo, Silhouette, Oldsmobile, FE3, Quad 4, PASS-Key, the Touring Sedan emblem, the Trofeo "T" emblem and the Oldsmobile emblem are registered trademarks of General Motors Corp. Achieva, Bravada, Elite, TILT-WHEEL, SmartTrak and the Oldsmobile Edge are trademarks of General Motors Corp.

 Oldsmobile
THE POWER OF INTELLIGENT ENGINEERING.



The New Site For Car Brochures
DEZO'S GARAGE