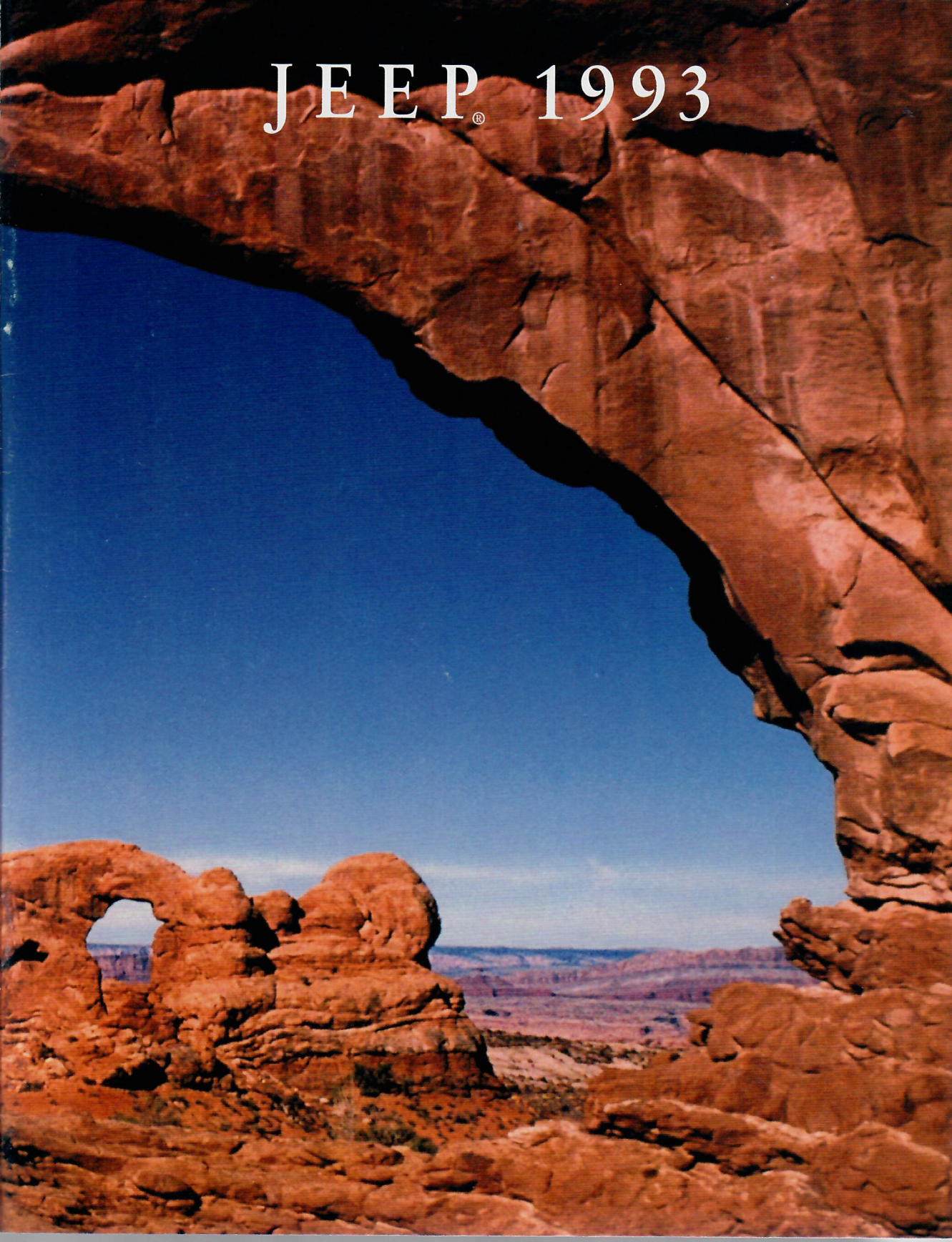
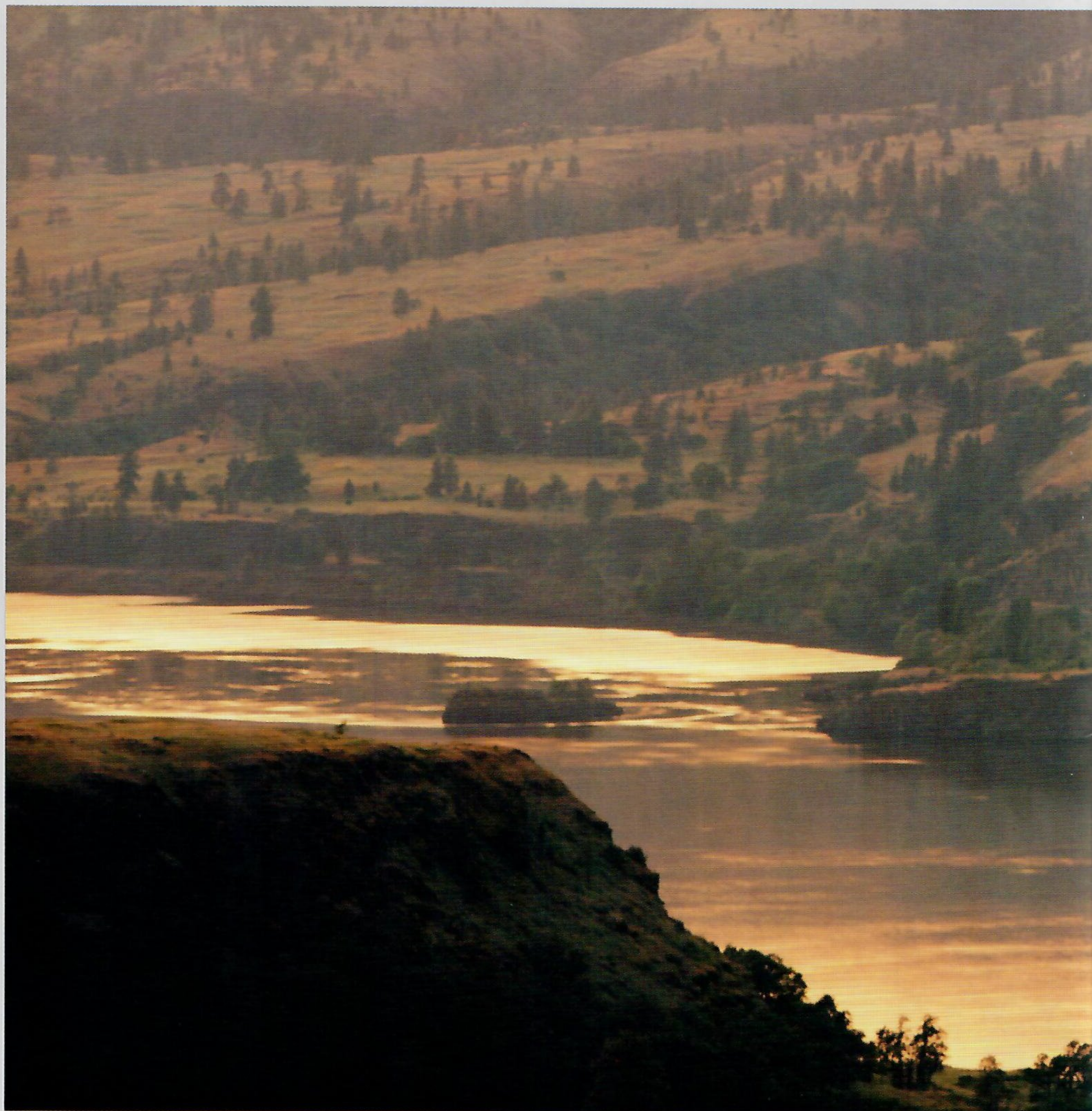


JEEP® 1993





THE LAST PLACE ON EARTH YOU'D EXPECT TO FIND YOURSELF.

You need to get away. Far away. That's one reason why for more than fifty years Jeep has provided folks the wherewithal to pursue the path to discovery. Legendary Jeep four-wheel drive owns the hard-won credentials to get you there. Because no one else has dedicated over half a century to this single driving principle.

Even Jeep must admit, regretfully, most of our time is spent not under a cathedral of pine, but in the logjam we call civilization.



Left to right: Jeep Cherokee Sport, Jeep Grand Wagoneer, Jeep Grand Cherokee Limited, Jeep Wrangler.

So Jeep brings to our everyday existence tools for modern survival. Like four-wheel anti-lock brakes, now available on all Jeep models. Or the only driver's side air bag on any sport utility (Grand Cherokee and Grand Wagoneer).

Yet for all its technical advancement, Jeep remains single-minded in its dedication to your exercising what has become a most inalienable right: the freedom to be yourself.

To obtain more detailed information on the complete line of 1993 Jeep vehicles, visit your Jeep and Eagle dealer.

All product illustrations and specifications are based upon current information at the time of publication approval. Although descriptions are believed to be correct, accuracy cannot be guaranteed. Chrysler Corporation reserves the right to make changes from time to time, without notice or obligation, in prices, specifications, color, and materials and to change or discontinue models. Some of the equipment shown or described throughout this brochure is available at extra cost. See your dealer for details.

It's nice to know that if you drive a Jeep or Eagle vehicle, you can be something nobody else is: yourself. Shown are Jeep Grand Cherokee Limited and Eagle Vision TSi.



JEEP GRAND CHEROKEE

2



3

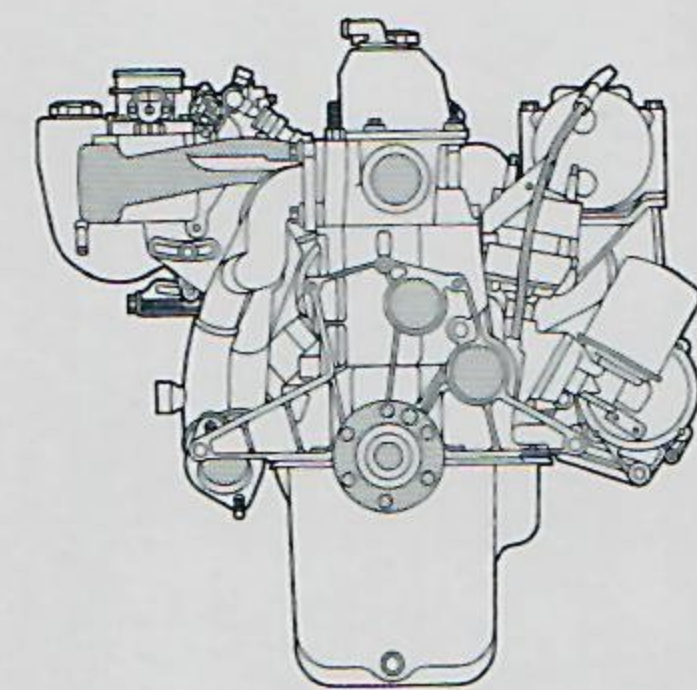
■ Jeep Grand Cherokee Limited

THERE'S A LOT OF FIRE IN THE BELLY OF THIS BEAST.

With the choice of two engines, each more powerful than anything in its class, Wrangler has the power to keep you moving. Wrangler, Base, and Sport are equipped with a standard 123 horsepower 2.5 litre MPI 4-cylinder engine. Those wanting more can choose the 180 horsepower 4.0 litre high-output engine standard on Sahara and Renegade.



Four-wheel anti-lock brakes, designed to help prevent wheel lockup and improve steering control, are now optional on Wrangler Base, Sport, Sahara, and (shown) Renegade models.



The high-output 4.0 litre 6-cylinder engine leads its class with 180 hp @ 4750 rpm and 220 lb-ft of torque @ 4000 rpm.

Jeep Wrangler with optional aluminum wheels

Wrangler's exclusive Command-Trac four-wheel drive system puts that power to good use off road. Featuring a 4 Low gear for extreme conditions, Command-Trac allows you to shift on-the-fly into 4WD at any speed.

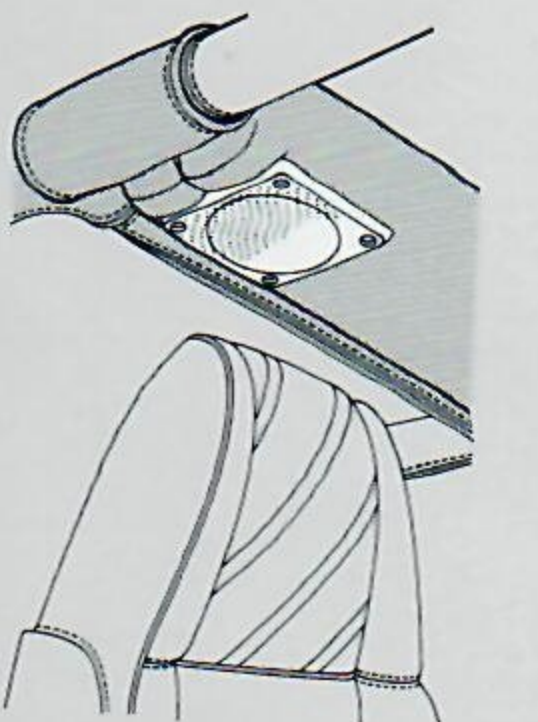


Built to take punishment, Wrangler has strengths that will become evident as soon as you need them. Its tubular frame was designed specifically to handle the rigors of off-road driving, and special skid plates protect the fuel tank and 4WD transfer case.

But don't expect a rough time inside. Reclining front bucket seats with comfortable, wide seat cushions and high backrest pads are available on all models. Among optional items are air conditioning, AM/FM stereo cassette with Dolby®, sound bar, and tilt steering.



This year, Wrangler Base can be outfitted with a striking new Sport Package shown with Bright Exterior Group.



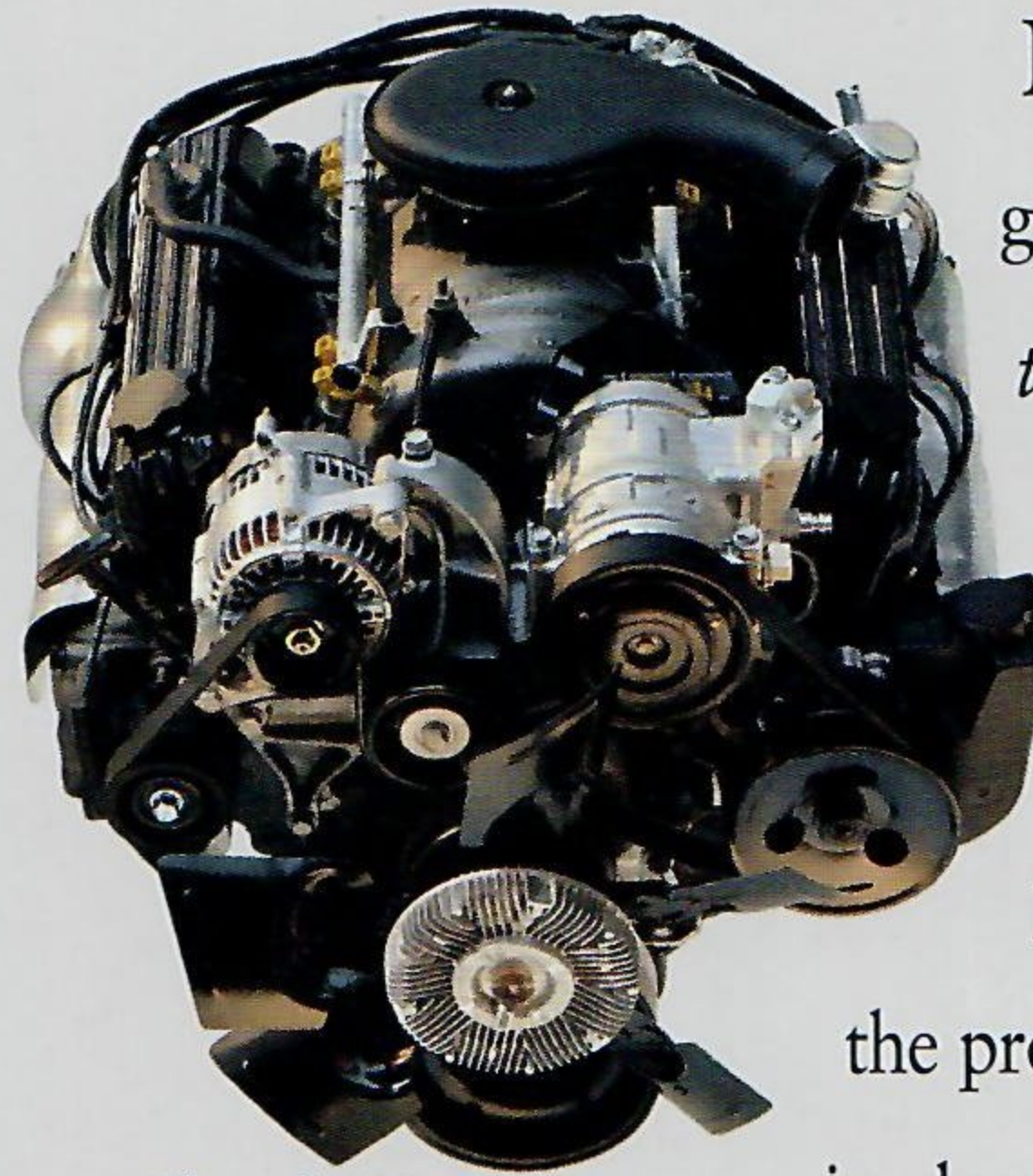
An optional sound bar has weatherproof rear speakers (standard on Sport; not available on Wrangler model).



Standard soft top or optional hard top is available on any Wrangler.

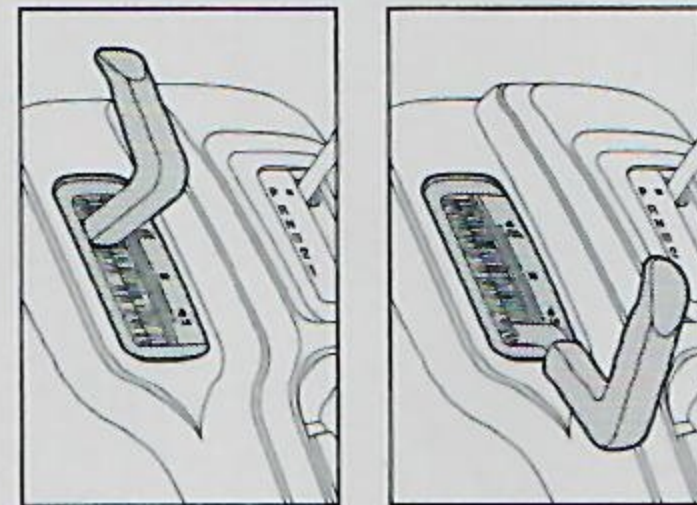
Jeep is a registered trademark of Chrysler Corporation. Buckle up for safety.

Now It Comes With Room For Eight.



Now the Jeep vehicle that's taken the world by storm gives you an even more powerful reason to own one: *the only V8 engine in its class.*

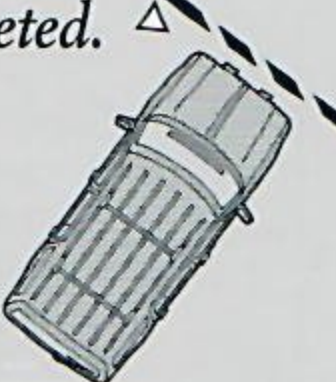

Grand Cherokee's optional new 5.2 litre V8 delivers 220 horsepower @ 4800 rpm and 285 foot-pounds of torque @ 3600 rpm. When equipped with the proper trailer package, that gives Grand Cherokee best-in-class towing capacity.





With 4WD Quadra-Trac (Left), the system adjusts automatically to changing conditions, while a shift to low range (Right) provides optimum gearing and torque at low speeds.

The only V8 engine in its class, the optional 5.2 litre includes an advanced engine management system for optimal performance on road, off road, or pulling a trailer.

4

Stop completed. 
Left  steering maneuver.

Right steering  maneuver.

Brake applied on  slick surface.

A standard four-wheel anti-lock brake system is designed to prevent lock-up on wet or slippery surfaces, providing an extra measure of steering control.



Only Grand Cherokee gives you a choice of three different 4WD systems including Quadra-Trac®, an all-the-time system that responds automatically to changing driving conditions.

Engineered to match this 4WD prowess is the remarkable Quadra-Coil™ suspension designed to withstand the rigors off road, yet provide positive handling and a smooth ride over paved surfaces. For the serious enthusiast, there's an Up Country Suspension Group. And standard on all models are four-wheel anti-lock brakes (ABS).



When equipped with the 5.2 litre V8 and proper trailer package, Grand Cherokee provides Class IV towing capacity: 6500 pounds maximum loaded trailer weight.

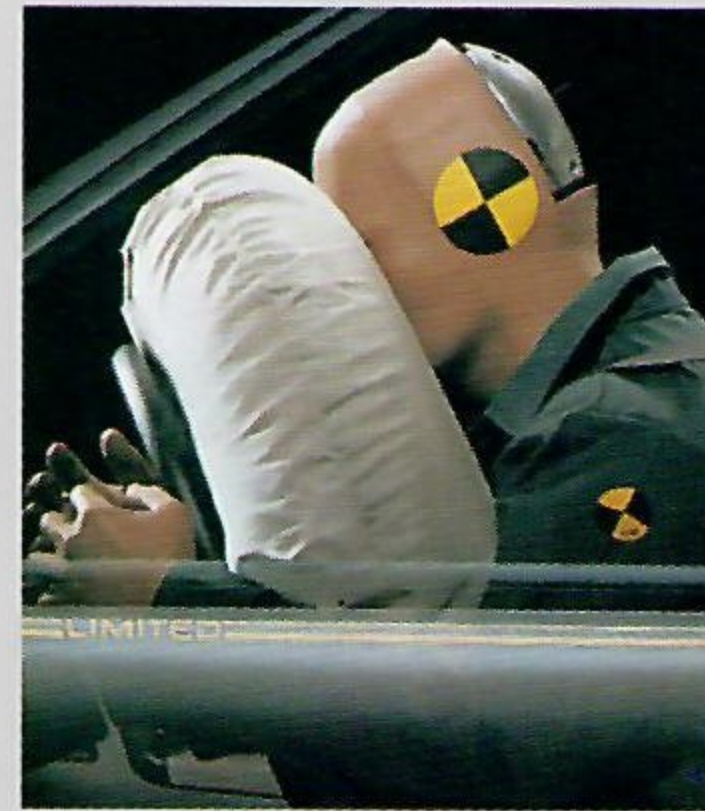
5



At each corner, the Quadra-Coil suspension includes high-tower coil springs, dual locating arms, gas-charged shock absorbers, urethane jounce bumpers, and 15"x7" wheels for a wide tire-to-surface footprint.



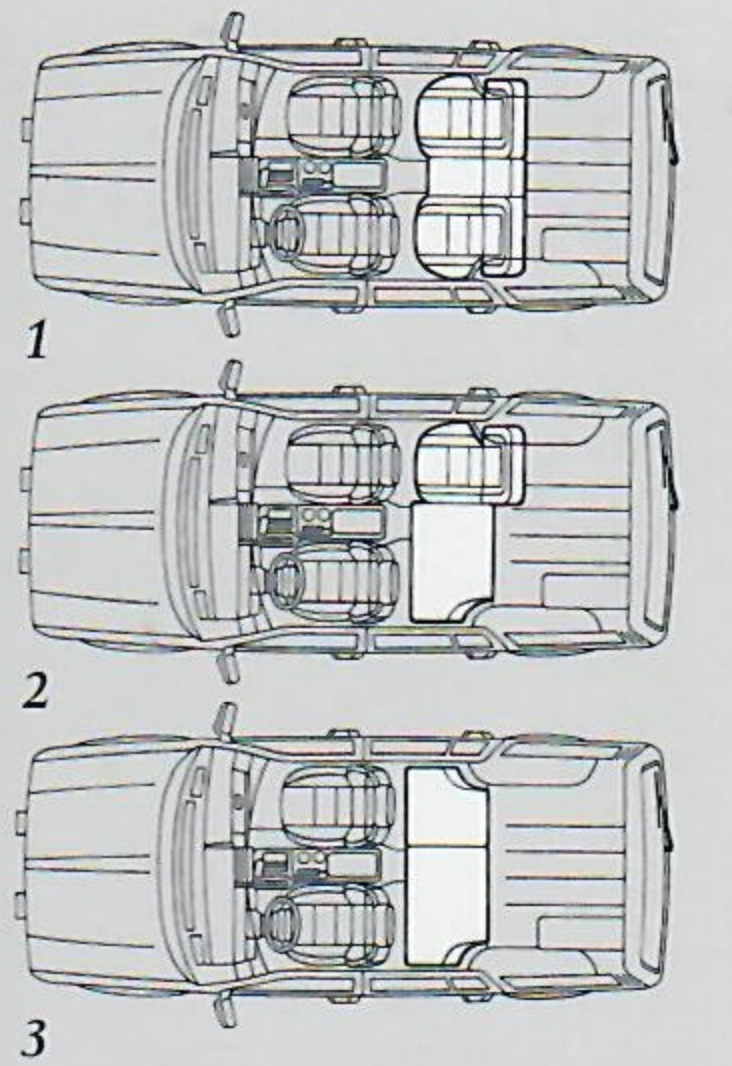
Jeep Grand Cherokee Laredo



Jeep Grand Cherokee is the first sport utility with a driver's side air bag. No other manufacturer offers one—and it comes standard on every Grand Cherokee model.



Jeep Grand Cherokee Limited interior with standard leather seats and vinyl trim



The 60/40 split rear bench seat provides maximum versatility for passenger/ cargo carrying needs:

1. five passengers (both seatbacks up)
2. three or four passengers (one seatback folded)
3. two passengers (both seatbacks folded) with maximum cargo space (cushion removed).

PERFECT FOR EVERYONE WHO WANTS A NICE CABIN IN THE WOODS.



Heated power side mirrors improve visibility (standard on Limited; optional on other models).

No longer must you sacrifice creature comforts for the competence and strength of a genuine 4x4. Instruments and controls have been carefully placed and seats engineered for body support. There's up to 79.6 cubic feet of cargo space with the rear seat folded. And the only removable-cushion split rear bench seat in its class.

Driver control and convenience are enhanced by such features as Automatic Temperature Control (standard on Limited only), Automatic Headlight system and

Night Vision Safety mirror (included in Luxury Group; standard on Limited and optional on Laredo), and the Convenience Group (standard on Limited and Laredo) that includes speed control, tilt steering, and a leather-wrapped steering wheel with integral speed control thumb switches.

Technical innovation includes the safety of the first and only driver's side air bag on a sport utility—standard on every model. And keeping the environment safe is an ozone-friendly air conditioning refrigerant.

A fully carpeted rear cargo area provides up to 79.6 cubic feet of cargo space with the rear seat folded—or fold down the split seat for longer items.

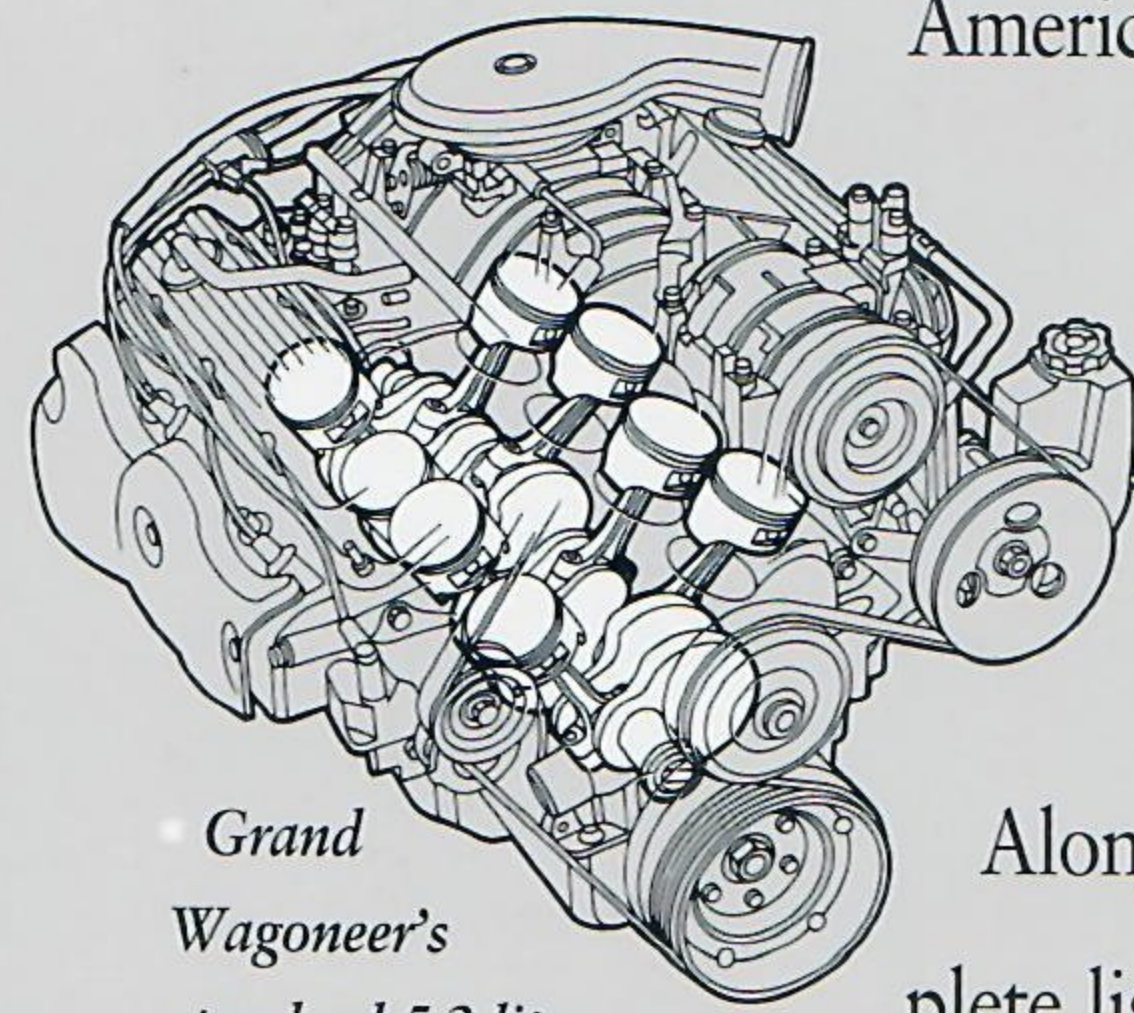


CLIMB RIGHT ALONG WITH YOUR ASPIRATIONS.

The new Jeep Grand Wagoneer offers a return to classic woodgrain, a traditional part of the American automotive landscape. And underneath it all another uniquely American tradition: the Jeep passion to perform.

Standard is the new 5.2 litre V8 powerplant. The only V8 engine in its class, it can deliver Class IV towing capacity when equipped with the proper trailering package: maximum 6500 pounds loaded trailer weight.

Along with unmatched power, no other manufacturer can give you such a complete list of technological innovations in a sport utility. All-the-time four-wheel drive.



• Grand Wagoneer's standard 5.2 litre V8 delivers 220 hp @ 4800 rpm and 285 lb-ft of torque @ 3600 rpm.



Jeep Grand Wagoneer

Four-wheel anti-lock brakes. A four-corner multi-link coil suspension. And the only driver's side air bag on any sport utility. All standard.

Technology also helps make Grand Wagoneer's interior a secure, convenient environment. Like the Vehicle Information Center, Night Vision Safety mirror, Automatic Temperature Control, heated side mirrors, and Vehicle Theft Security system.



• Grand Wagoneer's sophisticated interior includes Biscuit-style leather seat facings with vinyl trim, six-way power front seats, and 79.6 cubic feet of usable cargo space.



• A standard overhead console includes rear seat reading lamps and trip computer.

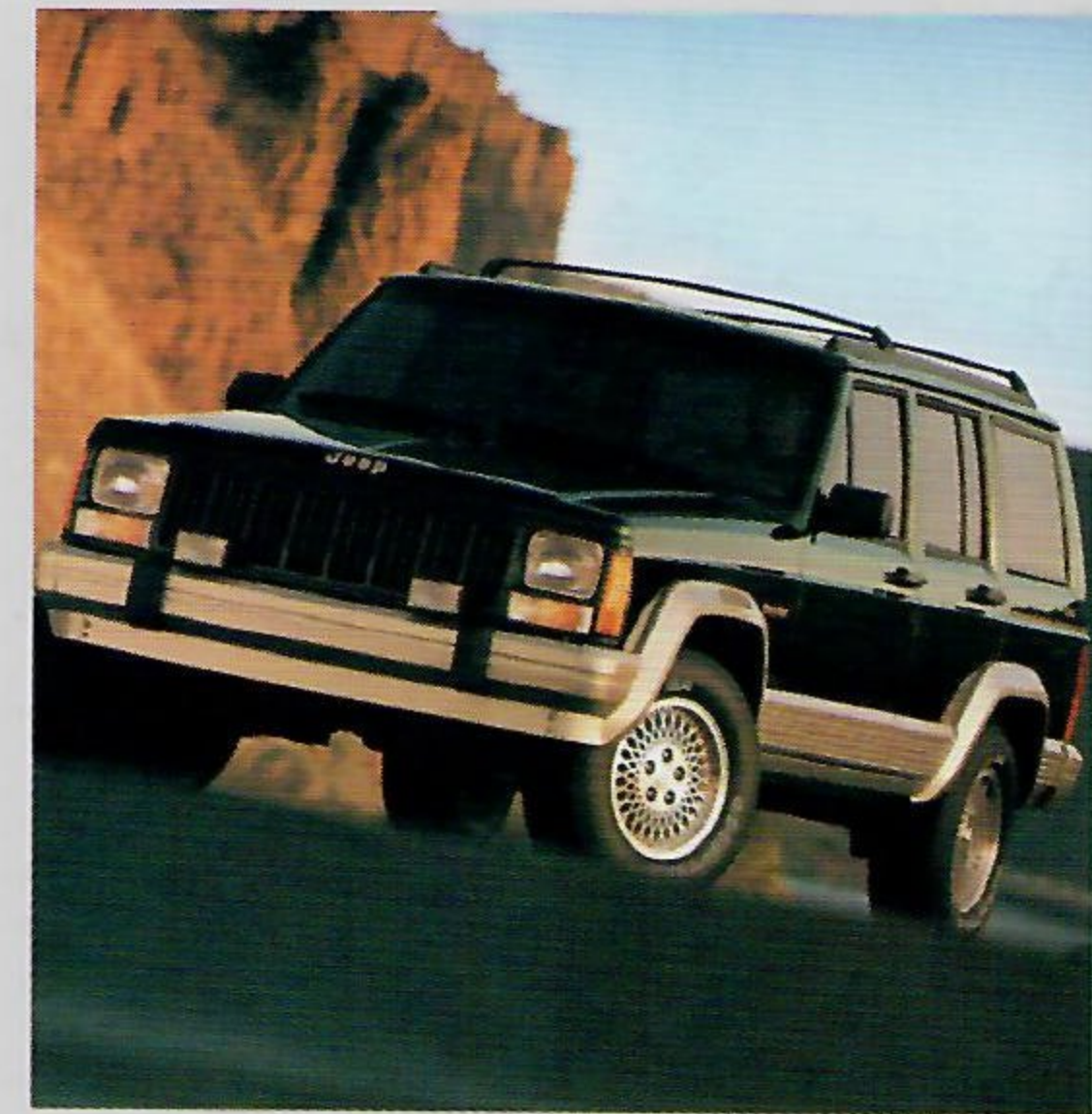


• The standard Automatic Temperature Control system lets you set and forget the temperature setting.

WHEN THE WORLD PUSHES YOU TO THE LIMIT, EXPLORE THE LIMITS OF THE WORLD.

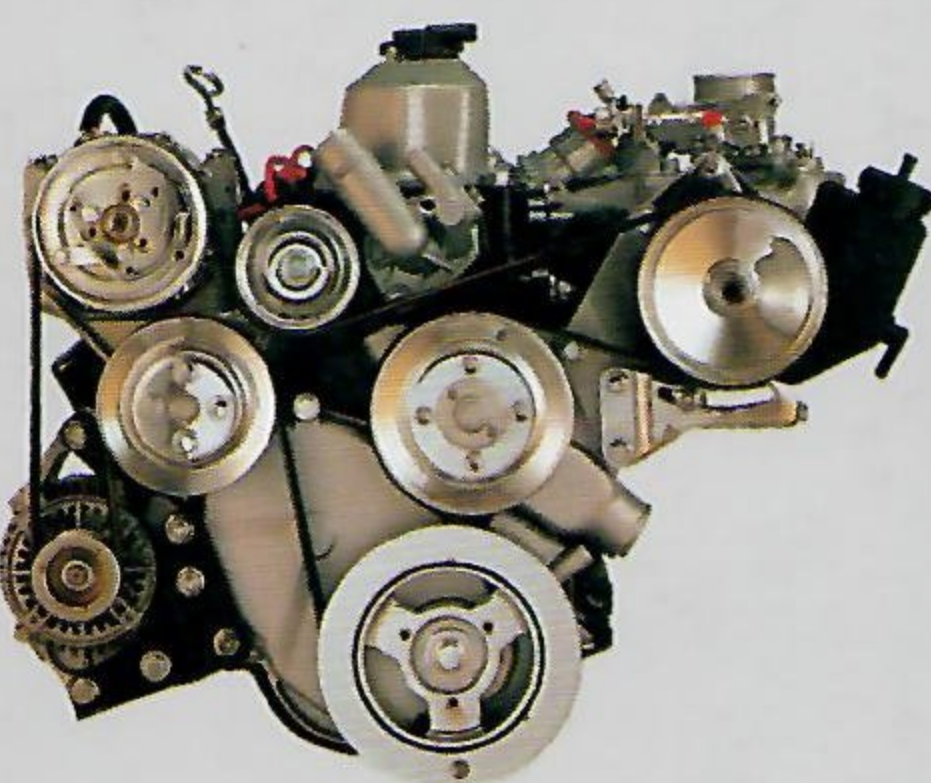
This power to go anywhere comes from its high-output 4.0 litre engine (standard on Sport and Country) that delivers 190 horsepower. A 130 horsepower 2.5 litre 4-cylinder engine is standard on Cherokee Base. For vital control and traction in treacherous conditions, 4WD Cherokee offers two shift-on-the-fly four-wheel drive systems: Command-Trac® part-time and optional Selec-Trac® full-time.

An exclusive Quadra-Link® front suspension ensures precise handling and riding comfort. Cherokee's UniFrame construction keeps the vehicle



Jeep Cherokee Country features a unique Champagne-colored lower bodyside treatment, as well as standards like a high-output 4.0 litre engine, roof rack, extra-quiet insulation, 15"x7" lattice aluminum wheels (with Champagne accents) and P225/70R15 Goodyear Eagle® GA outlined white letter radial tires.

10



The high-output 4.0 litre 6-cylinder engine has 190 hp and 225 lb-ft of torque and helps provide a trailer towing capacity of up to 5000 pounds when equipped with proper trailer package.



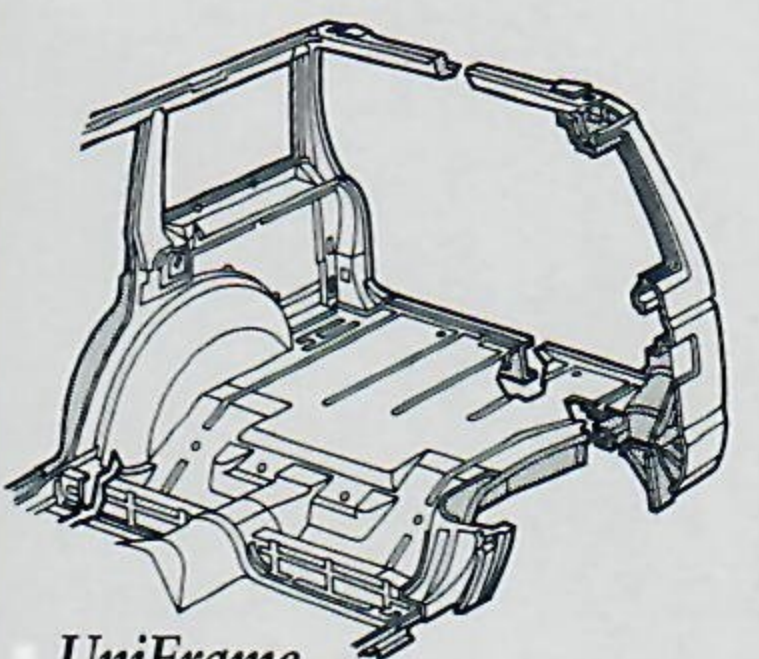
exceptionally rigid, yet lightweight, to enhance handling and fuel economy. And you can choose the extra security of optional four-wheel anti-lock brakes.

Inside, there's ample room for up to five adults and their cargo. Or fold down the rear seat for a generous 71.8 cubic feet of cargo space.



Jeep Cherokee Country's interior includes front recliner wingback bucket seats with integral headrests, Luggage fabric seat coverings, and full center console with covered storage.

11



UniFrame construction offers excellent support of the drivetrain and suspension, yet its surprisingly light weight contributes to acceleration, braking, and handling.

Jeep Cherokee Sport with optional aluminum wheels



There's Only One Jeep®...
A Division of the Chrysler Corporation.



Official Sponsor
1994 U.S. Olympic Team
36 USC 380

Litho in USA 8/92

Item No. 38004



The New Site For Car Brochures

DEZO'S GARAGE