

1995

VOLVO FULL LINE





960 Touring Sedan



960

Volvo's 960 distinguishes itself with a synergistic approach to motoring. Achieved through a refined integration of grand touring performance, comprehensive occupant protection and a richly appointed cabin environment, the exclusive 960 sedan and wagon celebrates the pleasure of driving with a style that rewards the senses.



960 Wagon

850

With advanced technology and innovative design, the Volvo 850 has revolutionized the concept of the sports sedan. Athletic and efficient, Volvo's 850 rewards you with state-of-the-art front wheel drive performance technology.



850 Turbo



850 GLT



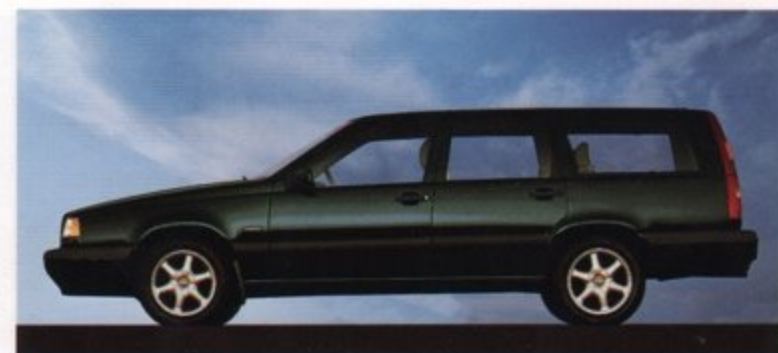
850 Sedan



850 Turbo Sportswagon



940 Sedan and Wagon (shown with optional equipment)



850 GLT Sportswagon



850 Sportswagon

940

Built to last and distinguished by the accolades earned for the qualities and features that set the standard for today's ideal family sedan and wagon, the 1995 Volvo 940 Series represents a thoughtful choice that will reward you for years to come.

The features listed here represent a small fraction of what is available on 1995 Volvo models.
Please contact your local Volvo dealer for additional details.

850

Driver and front passenger-side supplemental restraint system (air bag and knee bolster)
Seat belts: five 3-point, inertia-reel belts
Front seat belts have automatic height adjustment and pretensioners
Five padded head restraints (center-rear is adjustable)
Anti-lock brake system (ABS)
All-Season tires (except Turbo)
Side Impact Protection System
Side Impact Protection System Air Bags (standard on Turbo, optional other models)

Daytime Running Lights
Air conditioning/heating system with separate controls for driver and front passenger
AM/FM stereo, Dolby, anti-theft circuitry, 80 watt amplifier, CD changer capability, 6 speakers and power antenna
Power windows with "auto down" for driver's window
Dual power mirrors
Cruise control
Central power door locking system which can be operated from three positions, includes trunk and fuel filler lid locks

Adjustable driver's seat with lumbar support
Plush velour upholstery
Tilt/telescopic steering wheel
Illuminated, lockable glove box
Illuminated vanity mirrors in driver's and front passenger's sun visors
Tinted windows
Front door-panel storage pockets
Front seat back storage pockets
Long-load pass-through to trunk
Split 60/40 folding rear seat; front passenger seat backrest folds forward

Rear window defroster with automatic timer
Two-speed windshield wipers with intermittent cycle
Front and rear floor mats
Four cargo tie-down rings
Prewiring for security system and front fog lights
Tool kit
Rear fog light
Four front and rear reading lamps
Two entry lights (in front door foot wells)
Interior cabin light delay
Interior cabin light delay

"Open door" Traffic warning lights on doors
Luggage compartment light

Sportswagon includes:
Carpeted cargo area
Fold-down 60/40 split rear seat with folding head restraints
Integrated child booster cushion in rear center armrest*
Cargo tie-down rings
Integrated window antenna with signal amplifier
Rear window wiper/washer with intermittent cycle
Cargo area light

850 GLT includes:
Power glass sunroof with slide and tilt positions and sliding sun shade
8-way power adjustable driver's seat with 3-position memory
Premium Sound System; 100 watt amplifier, eight speakers (Sedan) and six speakers (Wagon)
Security system
Remote keyless entry
Alloy wheels

850 Turbo Package includes GLT option plus:
222 hp, Turbocharged and Intercooled engine
4-speed Automatic transmission
16 in. Alloy wheels; high performance tires
Dual Zone Electronic Climate Control
Leather wrapped steering wheel
Trip computer
Side Impact Protection System Air Bag

Engines:
Transversely mounted, 2.4 liter (2.3 liter Turbo), 5-cylinder double overhead cam, 4 valves per cylinder. Exhaust driven turbocharger with intercooler (Turbo only)
Horsepower (SAE net): 220 @ 5200 rpm
Torque (ft./lbs., SAE net): 221 @ 2100 rpm
Compression Ratio: 8.5:1

Turbo
Horsepower (SAE net): 220 @ 5200 rpm
Torque (ft./lbs., SAE net): 221 @ 2100 rpm
Compression Ratio: 8.5:1

Special version (Canada only)
2.4 Liter, 5 cylinder, dual overhead camshaft
Horsepower (SAE net): 138 @ 5400rpm
Torque (ft./lbs., SAE net): 152 @ 3600rpm
Compression Ratio: 10.0:1

Transmissions:
5-speed manual transmission with synchromesh on all speeds and reverse. (Not available with Turbo except Canada)
4-speed microprocessor-controlled automatic with selectable shift modes

Suspension:
Front: MacPherson strut with asymmetrically mounted coil springs.
Rear: Delta-Link semi-independent rear suspension

Tires and Wheels:
6" x 15" Steel wheel with full wheel cover
6.5" x 15" Alloy (GLT) (optional Turbo)
6.5" x 16" Alloy (Turbo)
195/60/15 All-Season tires
205/50/16 ZR Rated tires (Turbo)

Steering:
Power-assisted rack and pinion

Brakes:
Four-wheel, power-assisted disc brakes
Three-channel anti-lock braking system (ABS)

NOTE: Specifications and features listed differ slightly for Canadian markets. Please contact your authorized Volvo dealer for specific model information.

940

Driver and front passenger-side supplemental restraint system (air bag and knee bolster)
Seat belts: five 3-point, inertia-reel belts
Automatic seatbelt pretensioners for driver and front seat passenger
Five padded head restraints (center-rear is adjustable)
Anti-lock brake system (ABS)

Side Impact Protection System
Daytime Running Lights
Rear door child safety locks
Air conditioning (CFC-free)
AM/FM cassette stereo with anti-theft coding, power antenna (Sedan) and 6 speakers
Power windows with rear window lock-out feature
Cruise control

Locking differential rear axle
Tinted windows
Central power door locks, including trunk and tailgate
Dual power mirrors
Two-speed windshield wipers with intermittent cycle
Rear window defroster
Interior cabin light delay
Front seat reading lights

"Open door" Traffic warning lamps in doors
Halogen headlights
Rear fog light
Adjustable front driver and passenger seat with adjustable lumbar support
Illuminated, lockable glove box
Illuminated vanity mirror in sun visors

Front door-panel storage pockets
Front seat back storage pockets
Long-load pass-through to trunk (Sedan)
Luggage compartment light
Tricot plush cloth upholstery
Tool kit
Front and rear plush floor mats
Prewiring for optional security system

Wagon includes:
Integrated window antenna with signal amplifier
Fold-down rear seat back with 60/40 split, removable seat cushions and retractable outboard head restraints
Integrated child booster cushion in rear center arm rest*
Rear window wiper/washer with intermittent cycle

Lockable, hidden storage compartment beneath cargo floor
Carpeted cargo area
Cargo tie-down rings
Cargo area light

Engines:
Standard:
2.3 liter, single overhead cam, 4-cylinder
Horsepower (SAE net): 114 @ 5400 rpm
Torque (ft./lbs., SAE net): 136 @ 2750 rpm

Optional High Output:
2.3 liter, single overhead cam, turbocharged and intercooled, 4-cylinder
Horsepower (SAE net): 162 @ 4800 rpm
Torque (ft./lbs., SAE net): 195 @ 3450 rpm

Transmission:
4-speed automatic with overdrive fourth gear

Suspension:
Front: MacPherson strut with coil springs
Rear: Constant track live rear axle, locking differential

Tires and Wheels:
185/65R15T; All-Season tires
6" x 15" Steel wheels with full covers
195/65R15H tires - optional w/Turbo
6" x 15" Alloy wheels - optional

Steering:
Power-assisted rack and pinion
32.2 ft. turning circle (9.8 m)
3.5 turns, lock to lock

Brakes:
Four-wheel, power-assisted disc brakes, anti-lock braking system (ABS)

960

Driver and front passenger-side supplemental restraint system (air bag and knee bolster)
Seat belts: five 3-point, inertia-reel belts
Automatic seatbelt pretensioners for driver and front seat passenger
Five padded head restraints (center-rear is adjustable)
Anti-lock brake system (ABS)
Side Impact Protection System
Daytime Running Lights

Rear door child safety locks
Electronic climate control (CFC-free)
AM/FM "Premium Sound" full logic cassette stereo with anti-theft coding, amplifier, power antenna, CD capability and 8 speakers (6 speakers in Wagon)
Eight-way power adjustable driver's and front passenger's seats with 3 position memory function on the driver's seat.
Adjustable lumbar support on front seats

Leather-faced seating surfaces
Leather wrapped steering wheel
Three-position tilt steering column
Gray-tone backlit instrumentation
Power glass sunroof with slide and tilt positions
Power windows with "auto-down" for driver
Dual power mirrors with heating elements
Remote keyless entry with alarm

Central power door locks, including trunk
Tinted windows
Cruise control
Plush front and rear floor mats
Two-speed windshield wipers with intermittent cycle
Rear window defroster
Front door panel storage pockets
Front center armrest with cup holders
Front seat back storage pockets

Long-load pass-through to trunk
Tool kit
Prewiring for compact disc changer
Interior cabin light delay
Entry lights in front foot wells
Front and rear reading lamps
Warning lamps on doors
Halogen headlights with wiper washer system
Front fog lights
Rear fog light

Illuminated, lockable glove box
Illuminated vanity mirrors in sun visors
Luggage compartment light

Wagon includes:
Integrated window antenna with signal amplifier
Fold-down rear seat back with 60/40 split, removable seat cushions and retractable outboard head restraints
Integrated child booster cushion in rear center armrest*

Rear window wiper/washer with intermittent cycle
Lockable, hidden compartment beneath cargo floor
Carpeted cargo area
Cargo tie-down rings
Cargo area light

Engine:
2.9 liter, double overhead cam, all alloy, 24-valve, 6-cylinder
Horsepower (SAE net): 181 @ 5200 rpm
Torque (ft./lbs., SAE net): 199 @ 4100 rpm

Transmission:
4-speed electronically-controlled automatic with selectable shift modes

Suspension:
Front: MacPherson strut with coil springs.
Rear: Multilink independent rear suspension with cast aluminum sub-frame, Transverse composite leaf spring and locking differential

Tires and Wheels:
205/55VR-16 All-Season tires (Sedan)
6.5" x 16" Alloy wheels
195/65HR-15 All-Season tires (Wagon)
6" x 15" Alloy wheels

Steering:
Power-assisted rack and pinion

Brakes:
Four-wheel, power-assisted disc brakes; anti-lock braking system (ABS).

*For children age 3 and over weighing between 50 & 80 lbs. (23-36 kg) and between 46 & 54 in. (117 & 137 cm) in height.

Some of the information in this catalog may be incorrect due to product changes which may have occurred after this book was printed. Some of the equipment described or shown may now be available only at extra cost. Before ordering, please ask your Volvo dealer to bring you up to date. The manufacturer reserves the right to make changes at any time, without notice, to prices, color, materials, specifications and models.



© 1994 Volvo Cars of North America Inc., Rockleigh, NJ 07647
Volvo Canada Ltd., North York, Ont., M2H 2N7

VOLVO
Drive Safely

Printed in U.S.A. 7771220-6 English
"Drive Safely" is a trademark belonging to Volvo Cars of North America Inc.

1995

VOLVO FULL LINE

© 1994 Volvo Cars of North America Inc., Rockleigh, NJ 07647
Volvo Canada Ltd., North York, Ont., M2H 2N7

VOLVO
Drive Safely

Printed in U.S.A. 77712298 English
"Drive Safely" is a trademark belonging to Volvo Cars of North America Inc.