



1 9 9 9 M i t s u b i s h i



WAKE UP AND DRIVE

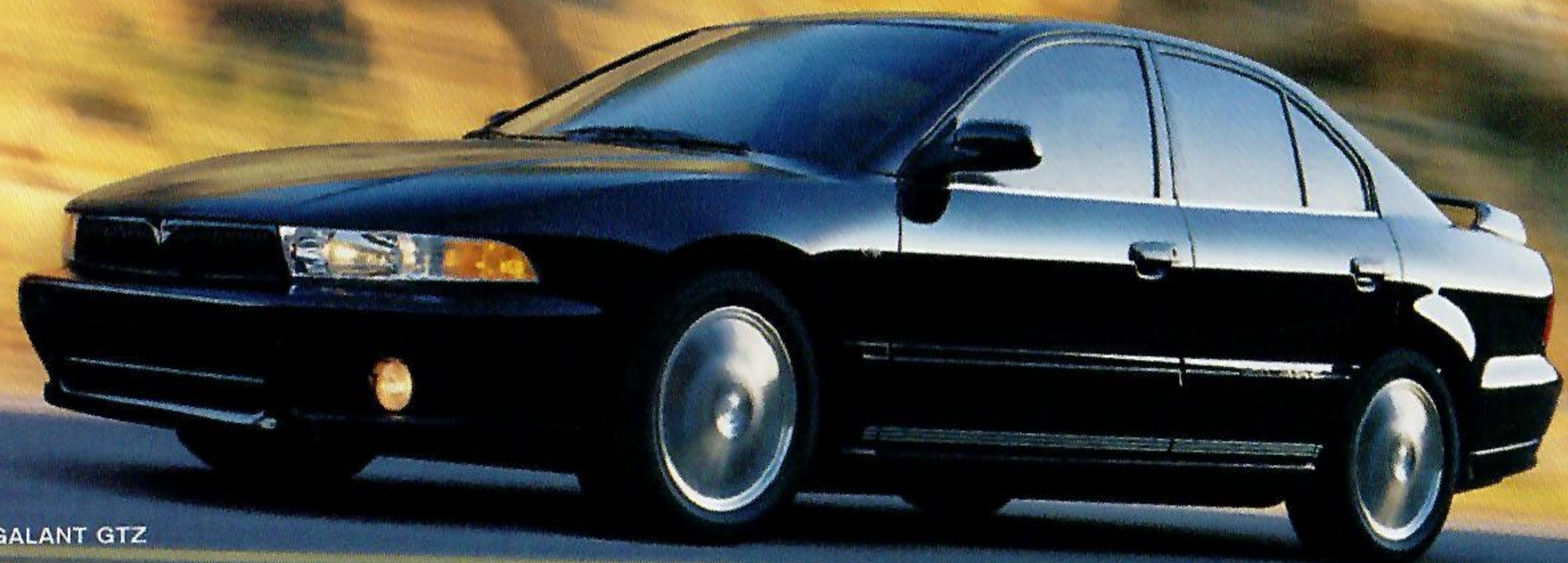


E v e r y t h i n g B u t B a s i c T r a n s p o r t a t i o n .

Have you ever actually heard of someone longing for a more *sensible* car? Perhaps your thinking is more like Mitsubishi's: A quality vehicle is more than durable, well-crafted and reliable. It doesn't just satisfy your mind. It kick-starts your heart. For over 80 years, Mitsubishi Motors has been building exceptional vehicles to take drivers where they want to go, day in and day out. Vehicles packed with performance and value to keep you smiling along the way. And to make sure it measures up, Mitsubishi tests passenger-car engineering not only on a sterile test track, but in the thrilling World Rally Championships, too. And they evaluate SUVs by racing in, and usually winning, Africa's grueling 18-day Dakar Rally. Now, there's probably a more scientific way to check out these designs. But if it isn't lively or exciting or great fun, it simply isn't Mitsubishi quality.

Mirage Coupe LS shown without standard fog lamps and side air dams. Montero Sport XLS 4WD shown without standard roof rack.

T h e A I I - N e w G a l a n t



GALANT GTZ



GALANT ES V6 shown with optional equipment

Sedans and pulses can coexist. Want proof? See the new Mitsubishi Galant. With a responsive 4-wheel independent suspension and available 3.0-liter V6, it's one family sedan that will get you home to your family faster. Beneath its sharp, sophisticated styling is the kind of quality engineering that ensures it's fun to drive and made to last. And inside the light, airy cabin you'll find all the room, comfort and security required for a trip into town, out for the evening or off to your favorite weekend spot. There are five value-rich models from which to choose, including the sport-tuned GTZ. No matter which one you prefer, you'll discover that there is life after four doors.

M o n t e r o S p o r t



You've got places to go and things to do. Get a Montero Sport, and you can go even more places and do even more things. Its rock-solid build and rugged looks are based on 64 years of making tough off-highway vehicles. And unlike many other SUVs, it offers a remarkably smooth ride around town as a bonus. Available in 2WD or 4WD, Montero Sport gives you plenty of room for five or up to 79.3 cubic feet of space for cargo. And with a gutsy 4-cylinder, a powerful 3.0-liter V6 or the all-new 3.5-liter V6 in the Limited, Montero Sport puts plenty of power behind that strong-shouldered style. Even if you're only going to pick up some milk, you'll look darn good doing it.



MONTERO SPORT XLS 4WD



DIAMANTE shown with optional equipment

D i a m a n t e

Luxury. Performance. Attainability. You'd have to look pretty hard to find a sedan that combines all three as stylishly as the Mitsubishi Diamante. Or you can just revel in its lavish level of comfort, feel the performance of its advanced technology and enjoy the satisfaction of your smart decision.

M o n t e r o

It's hard to get people to agree on anything. But Mitsubishi's time-honored SUV, with Active Trac 4WD,[™] a 3.5-liter V6 and Multi-Mode[™] ABS, is revered in 170 countries around the globe. Experience the world from inside its richly outfitted cabin with spacious seating for seven, and you'll agree, too.



MONTERO shown with optional equipment



Eclipse Coupe and Spyder



ECLIPSE GS shown with optional equipment

How much excitement can you handle? The Mitsubishi Eclipse offers several savory ways to fulfill your appetite. Start with a sleek, aggressive shape, enjoy an agile, fully independent multi-link suspension, and feast on a main course of up to 210 turbocharged horsepower. There are four coupe versions—two turbocharged and one even adding the surefooted handling stability of All-Wheel Drive. Pick one of the two Eclipse Spyder models, and the fine-crafted soft-top opens to the sun in just 10 seconds. And no matter which way you go, you'll find the Eclipse performs just as well in the comfort and convenience taste test. So go ahead, indulge yourself.



ECLIPSE SPYDER GS shown with optional equipment

3 0 0 0 G T



It's one of the few cars that can move you, even standing still. Looking at its arresting shape, you sense the 3000GT is designed to go. A suspicion quickly confirmed when you realize what's beneath the sleek skin. Like a precise independent suspension and, if you opt for the VR-4, a twin-turbo, twin-intercooled 320-hp V6, All-Wheel Drive and 4-wheel steering. But you need not choose the VR-4 to be moved. All three models are packed with performance engineering. And the supremely comfortable interior is well stocked with plenty of amenities for your money. So you'll always be ready to take advantage of an open stretch of road. And open a few eyes along the way.



3000GT VR-4



MIRAGE SEDAN LS shown with optional equipment

M i r a g e S e d a n

If value means getting more for less, the designers rewrote the definition with the Mirage Sedan. This roomy 4-door fits five, with the style, safety and creature comforts you'd expect on a pricey sedan. It runs like a Swiss watch. And the only thing as fun as driving one is spending your extra money.

The trademark Mirage is used with the consent of Grand Touring Cars, Inc., Scottsdale, AZ.

M i r a g e C o u p e

Question: How do you get loads of fun for little dough?
Answer: Drive a Mirage Coupe with its nimble suspension and powerful yet economical multi-valve 1.5- or 1.8-liter engine. And you know what's most fun? Zipping around in a sporty car that makes other coupes look like boxcars.



MIRAGE COUPE LS shown with optional equipment






wake up and drive™

1-800-55MITSU (1-800-556-4878)

www.mitsucars.com

©1998 Mitsubishi Motor Sales of America, Inc.
6400 Katella Ave., Cypress, CA 90630-0064

Part Number MMSA-ADV-99500 Litho in USA on Recycled Paper 

Technical data, features, options and other equipment shown in this brochure are based on the latest information available at the time of printing and are subject to change without notice.



The New Site For Car Brochures

DEZO'S GARAGE