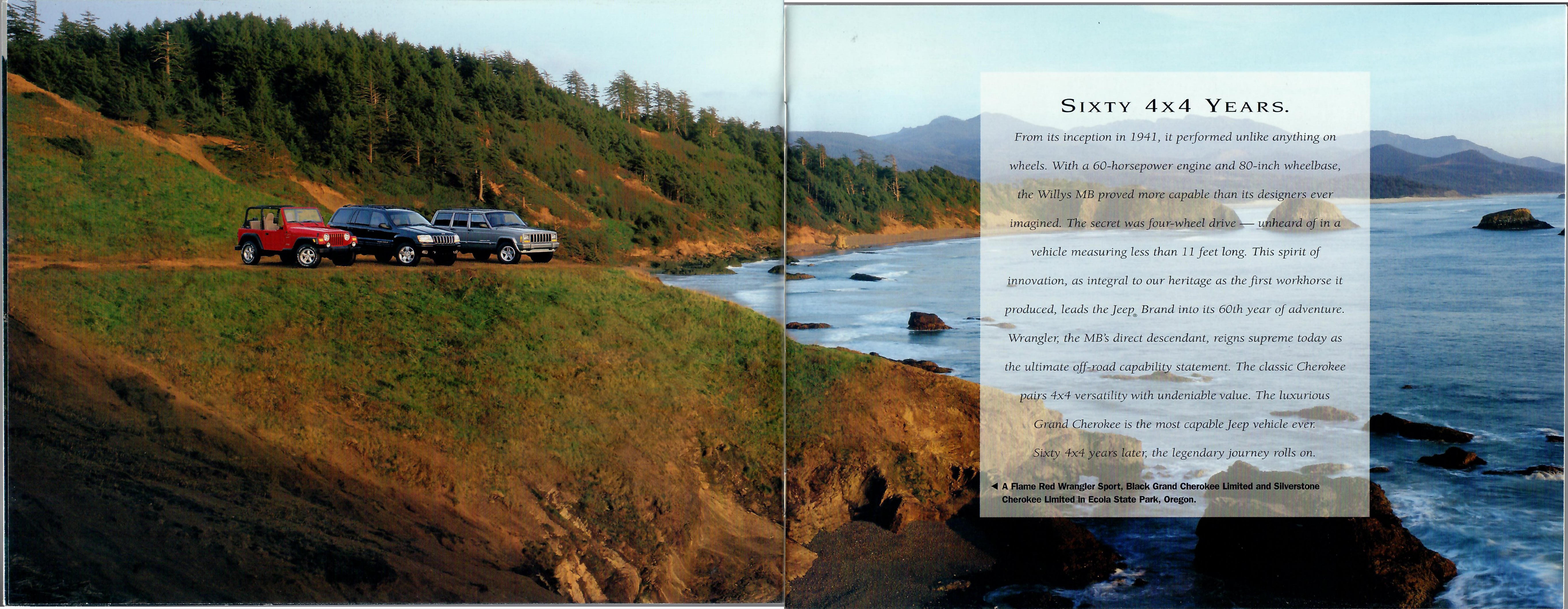


J E E P[®] 2001





SIXTY 4x4 YEARS.

From its inception in 1941, it performed unlike anything on wheels. With a 60-horsepower engine and 80-inch wheelbase, the Willys MB proved more capable than its designers ever imagined. The secret was four-wheel drive — unheard of in a vehicle measuring less than 11 feet long. This spirit of innovation, as integral to our heritage as the first workhorse it produced, leads the Jeep® Brand into its 60th year of adventure. Wrangler, the MB's direct descendant, reigns supreme today as the ultimate off-road capability statement. The classic Cherokee pairs 4x4 versatility with undeniable value. The luxurious Grand Cherokee is the most capable Jeep vehicle ever. Sixty 4x4 years later, the legendary journey rolls on.

◀ **A Flame Red Wrangler Sport, Black Grand Cherokee Limited and Silverstone Cherokee Limited in Ecola State Park, Oregon.**

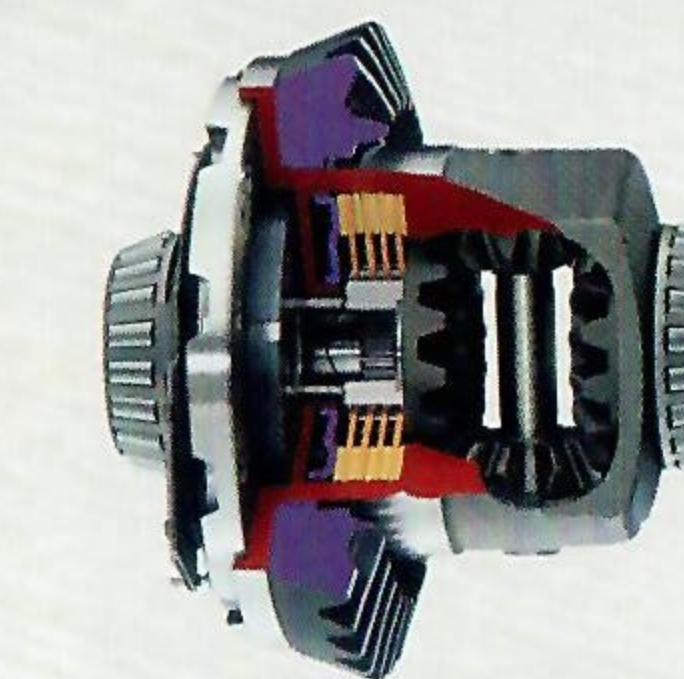
JEEP GRAND CHEROKEE



4WD LEADERSHIP

THE QUADRA-DRIVE™ SYSTEM

Our most advanced 4WD system ever, Quadra-Drive sends engine torque through the Quadra-Trac II™ transfer case to the rear Vari-Lok™ axle in normal driving. If slippery conditions are encountered, the system can respond to a loss of traction in a number of ways. For instance, the rear axle gerotor coupling can transfer torque to the other rear wheel. If no traction exists, the transfer case gerotor coupling can send torque to the front Vari-Lok axle. There, the gerotor coupling can send nearly 100 percent of the developed engine torque to just one front wheel, if necessary, to maintain traction. The Quadra-Trac II and Selec-Trac® 4WD systems are also available.



The system's three gerotor couplings (axle coupling shown) help transfer torque to the wheels or wheel with the most grip.



A Steel Blue Grand Cherokee Laredo with new Special Appearance Group that features aggressive 17-inch seven-spoke cast aluminum wheels, accent-colored lower bodyside cladding, front and rear fascias and tape striping.

◀ A Sienna Grand Cherokee Limited in Hawaii's Mackenzie State Recreation Area.

POWER & PERFORMANCE

4.7L POWER TECH V8

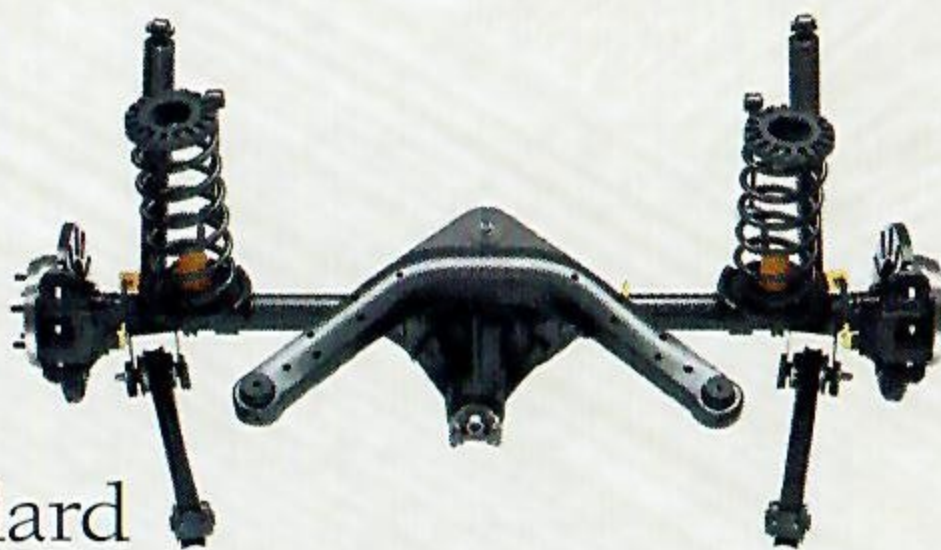
Petersen's 4-Wheel & Off-Road magazine described their V8-equipped Grand Cherokee Limited test vehicle as "... a sports car with low range."

And why not? With a throaty 235 horsepower and 295 pound-feet of torque, the engine's exceptional performance also includes hefty pulling power (6,500-pound towing capability when properly equipped). A new five-speed automatic transmission, with an additional overdrive and alternate second gear, articulates this awesome power by providing world-class shift precision and superior fuel economy figures (EPA 15 city/19 highway*) for a V8-equipped 4WD sport-utility vehicle. A 4.0L Power Tech I-6 with 190 horsepower is standard.



QUADRA-COIL™ SUSPENSION

A three-link rear suspension, widely spaced tie-rod points, coil springs at all four corners and 17-inch wheels and tires (standard on Limited, standard on Laredo with Special Appearance Group) provide a luxurious on-road ride. Off-road, solid front and rear axles supply constant ground clearance, while a tight turning radius enables Grand Cherokee to tackle off-road maneuvers as deftly as securing a parking space.



*Based on 2000 MY EPA figures. 2001 MY EPA not available at time of printing.

A Black Grand Cherokee Limited at Oneonta Gorge, Oregon. ►



CRAFTSMANSHIP



Grand Cherokee Laredo cloth seats are available in Taupe (shown), Sandstone or Agate.

The elegant environment of Grand Cherokee makes every trip one to savor. On Limited, leather-trimmed seats, an Infrared Dual Zone Climate Control system and a high-gloss woodgrain finish on the center console and instrument panel moldings are standard. On Laredo, durable cloth seats and a brushed aluminum finish cast a more rugged look. Primary controls are within easy reach, like speed control buttons on the front of the available leather-wrapped steering wheel. On its underside are convenient controls for the Infinity® sound system.



With rear seats up, Grand Cherokee has 39.0 cubic feet of cargo space. For 72.3 cubic feet, fold the entire seat down.

◀ Grand Cherokee Limited leather-trimmed seats are available in Sandstone (shown), Agate or Taupe.

Properly secure all cargo.

4WD LEADERSHIP

SELEC-TRAC® AND COMMAND-TRAC® 4WD

Cherokee's legendary versatility includes the choice of two proven Jeep® 4WD systems. With Selec-Trac, optional on 4WD Limited and Sport (requires 4-speed automatic transmission), a convenient 4 FULL-TIME mode allows you to leave 4WD engaged year-round, over all road surfaces. With standard Command-Trac, you shift into 4WD whenever extra traction is needed, then shift back to two-wheel drive when dry pavement resumes.



In the unpaved world, skid plates help protect vital undercarriage components from damage. They're available for 4WD models in the Up Country Suspension Group.

4.0L POWER TECH I-6

Fueling Cherokee's sense of adventure is the powerful 4.0L Power Tech I-6 engine, standard on both Cherokee models. So whether the adventurous Sport or refined Limited suits your needs, you'll have 190 horsepower and 225 pound-feet of torque at your disposal — for hardy trail work and quick acceleration on the open road. A four-speed automatic transmission is standard on Cherokee Limited (optional on Sport), while a five-speed manual is standard on Cherokee Sport.

A Black Cherokee Sport near Makua, Oahu, Hawaii. ►



JEEP® CHEROKEE

INTERIOR VERSATILITY

COMFORT & CONVENIENCE

With the rear seats folded down, Cherokee offers 66.0 cubic feet of cargo space. Fold it up and you still have 34.0 cubic feet at your disposal. And all that space is easily accessible because the one-piece, all-steel rear liftgate is easy to open and close, and features an interior handle to assist you. So load up Cherokee and go — anywhere. Helping you plot your course is an overhead console with trip computer, outside temperature display, compass, front and rear reading lamps and storage for a pair of sunglasses and a garage door opener. It's optional on Limited. To keep your personal favorites close at hand (java, tunes), both Cherokee models feature a standard full-floor center console that includes dual, multisize cup holders and covered storage for CDs and cassettes.



The Leather Interior Group for Cherokee Limited includes leather-trimmed heated seats in Agate or Camel (shown). Dual power seats are included with this option.

◀ Cherokee Limited cloth seats are available in Agate (shown) or Camel.

Properly secure all cargo.

4WD LEADERSHIP



A Steel Blue Wrangler Sport at Flat Pass Trail, Utah.

COMMAND-TRAC® PART-TIME 4WD

All Wranglers are equipped with Command-Trac, a shift-on-the-fly part-time 4WD system. "Shift-on-the-fly" means you can shift the 4WD transfer case lever from two-wheel drive (2WD) to 4WD high range at speeds up to 55 mph. "Part-time" means you only engage 4WD when extra traction is required. Another asset is Wrangler's Quadra-Coil™ suspension, which soaks up bumps, offers incredible articulation and helps give all four wheels firm contact in rocky terrain.

4.0L POWER TECH I-6

With 190 horsepower and 235 pound-feet of torque, the 4.0L Power Tech I-6 engine is standard on Sport and Sahara. With this power plant and the standard five-speed manual transmission, Wrangler can tow up to 2,000 pounds.



An Amber Fire Wrangler Sport near Saguaro National Park, Arizona. ►

JEEP® WRANGLER



OPEN-AIR FREEDOM

Lessons learned on the trail have resulted in an interior with a real sense of purpose. An ergonomically designed instrument panel and new multifunction control lever on the steering column provide easy access to controls — helping you stay focused on the road. Center console choices include a new mini-console with two front cup holders (standard on SE and Sport) or a new full-floor console with integral subwoofer and front and rear cup holders (standard on Sahara). Wrangler also gives you more top options than any vehicle in its class. Standard is the new four-ply soft top, which reduces wind noise. The hardtop protects you from the harshest weather. For the best of both worlds, there's the Dual-Top option — which allows you to order both tops at the same time you order your vehicle. Whatever your top choice, opt for available tinted windows (standard on Sahara).



The optional Add-A-Trunk — in new molded plastic — is easy to install/remove and provides 2.5 cubic feet of lockable storage. The top shelf converts into a convenient tailgate tray.



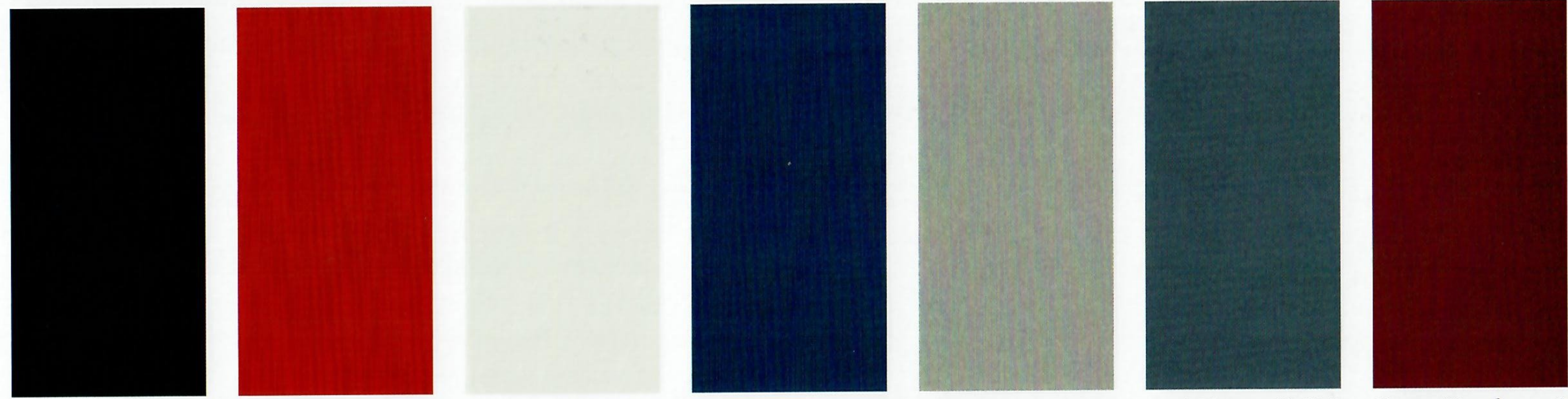
To enhance privacy and minimize glare, Wrangler's new four-ply soft top is available with tinted windows.

◀ Wrangler Sport cloth seats shown in Agate in Utah's Salt Flats.

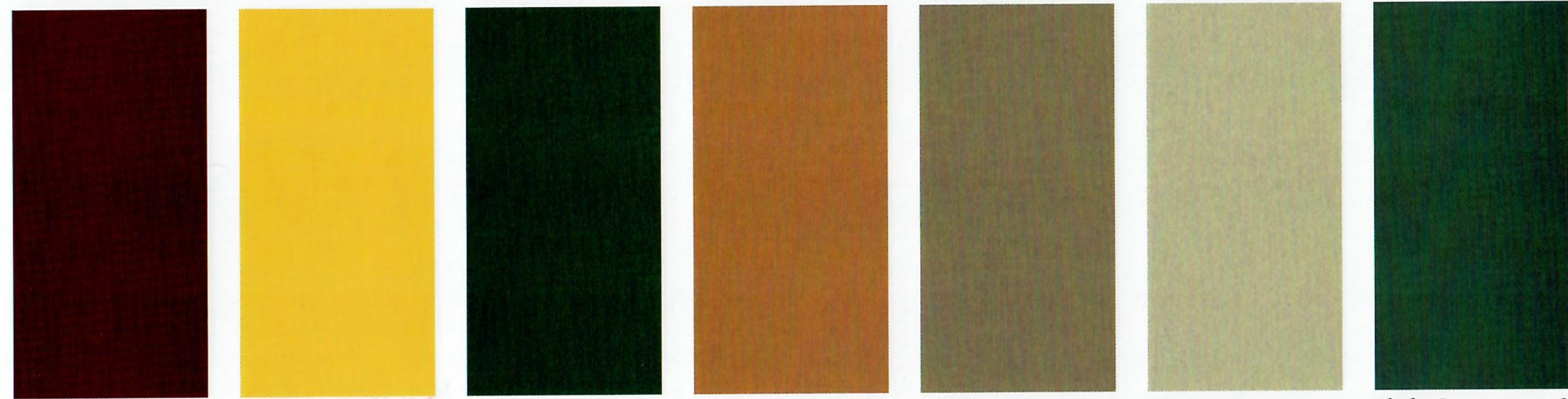
Properly secure all cargo.

COLOR & TRIM

EXTERIOR COLORS



Black 1, 2, 3 Flame Red 1⁽¹⁾, 2, 3 Stone White 1, 2, 3 Patriot Blue Pearl Coat 1⁽¹⁾, 2, 3 Silverstone Metallic 1⁽¹⁾, 2, 3 Steel Blue Pearl Coat 1⁽¹⁾, 2⁽²⁾, 3 Sienna Tinted Pearl Coat 3



Sienna Pearl Coat 1, 2 Solar Yellow 1⁽¹⁾ Forest Green Pearl Coat 1, 2 Amber Fire Pearl Coat 1⁽¹⁾ Woodland Brown Satin Glow 3 Champagne Pearl Metallic 3 Shale Green Metallic 3

WRANGLER SOFT TOP COLORS



Black Dark Tan

LEGEND:

1. Wrangler 2. Cherokee 3. Grand Cherokee

Note: Colors may vary from actual hues.

⁽¹⁾ Not available on Wrangler Sahara. ⁽²⁾ Late availability on Cherokee models.

GRAND CHEROKEE



Dayton cloth. Standard on Laredo. Shown in Taupe, also available in Agate or Sandstone.



Royale premium leather trim. Available on Laredo. Shown in Agate, also available in Sandstone or Taupe.



Royale premium leather trim. Standard on Limited. Shown in Sandstone, also available in Agate or Taupe.

CHEROKEE



Gilmore cloth. Standard on Sport. Shown in Agate, also available in Camel.



Grenoble cloth. Standard on Limited. Shown in Agate, also available in Camel.



Highland Grain leather trim. Optional on Limited. Shown in Camel, also available in Agate.

WRANGLER



Sutton vinyl. Standard on SE and Sport. Shown in Agate, also available in Camel.



Nomad cloth. Optional on SE and Sport. Shown in Camel, also available in Agate.



Trailcloth. Standard on Sahara. Available only in Dark Green/Camel.

SELECTED STANDARD EQUIPMENT

ALL 2001 GRAND CHEROKEE MODELS INCLUDE:

Air Bags* — Next Generation

driver and front-passenger

Alternator — 136-ampere

Axle Ratio — 3.55:1

Battery — 625-ampere,
maintenance-free with Battery-Saver Feature

Brake-Park Interlock

Brakes — Four-wheel disc antilock

Child Seat Top Tether Anchors — User-ready, located in headliner behind the backseat to help minimize movement of compatible aftermarket child seats

Console

— Full-length floor: Includes dual front and rear cup holders, padded armrest, storage bin for CDs/cassettes, tissue box, pen holder and coin holder

— Mini-overhead: Includes traveler/mini-trip computer, vehicle information center, customer programmable features and two map/reading lamps

Door Locks

— Child-protection rear

— Power with illuminated controls and programmable feature

Engine Immobilizer — Sentry Key®

Fuel Tank — 20.5-gallon with brush guard, driver-side filler door with tethered cap

Glass — Deep-tint sunscreen on rear doors, quarter and liftgate windows

Liftgate — Rear with fixed intermittent wiper/washer, flipper glass and electric defroster

Lighting — Quad-halogen headlamps, aero-designed with time delay feature

Power Outlet — Auxiliary, 12-volt instrument panel-mounted

Roof Rack — With adjustable bows and 150-lb capacity

Seat Belt Cluster Telltale — Indicator stays on after engine start until the driver buckles up

Shoulder Belts — Height-adjustable front and rear outboard with turning loops and front seat belt tensioners



Spare Tire Carrier — Tub under rear floor with interior access

Speed Control — Electronic with steering wheel-mounted controls

Steering Column — Tilt

Suspension — Quadra-Coil™ live solid axles with front upper, and rear upper and lower control arms, front and rear coil springs, stabilizer bars and low-pressure gas-charged shock absorbers

Windows — Power with illuminated controls, driver's lockout and one-touch-down features

Wiper System — Variable intermittent front

*Certified to the Federal Regulations that allow less forceful front air bags. Always use seat belts. Children 12 and under should always be in a backseat correctly using an infant or child restraint system, or a seat belt that is right for their age and size.

ALL 2001 CHEROKEE MODELS INCLUDE:

Air Bags* — Next Generation

driver and front-passenger

Alternator — 124-ampere

Antenna — Fixed, front

Battery — 500-ampere,
maintenance-free

Brake-Park Interlock (Automatic transmission)

Brakes — Front disc/rear drum

Child Seat Top Tether Anchors — User-ready, located in headliner behind the backseat to help minimize movement of compatible aftermarket child seats

Clutch-Starter Interlock (Manual transmission)

Coat Hooks — Rear (two), on assist handles

Console — Full-floor: Includes cup holders (two), covered storage, padded armrest and storage bin with slots for CDs/cassettes

Cup Holders — Front (two)

Defroster — Electric rear window

Door Locks — Child-protection rear (four-door models only)

Fuel Tank — 20-gallon, driver-side filler door with tethered cap



Glass — Tinted, all windows

Glove Box — Locking

Instrument Cluster — 100-mph speedometer, fuel gauge and warning lamps

Lighting

Exterior — Halogen headlamps

Interior — Dome lamp (replaced with map/reading lamps when overhead console is ordered)

Seat Belt Cluster Telltale — Indicator stays on after engine start until the driver buckles up

Shoulder Belts — Height-adjustable front and rear outboard with turning loops and front seat belt tensioners

Sound System — AM/FM stereo radio with cassette player, clock and four speakers

Suspension — Quadra-Link front with live solid axle, four locating arms, coil springs, gas-charged shock absorbers, track and stabilizer bars; beam axle on two-wheel-drive model; live solid rear axle with multileaf springs, stabilizer bar and gas-charged shock absorbers

Wiper System — Front, two-speed intermittent

*Certified to the Federal Regulations that allow less forceful front air bags. Always use seat belts. Children 12 and under should always be in a backseat correctly using an infant or child restraint system, or a seat belt that is right for their age and size.

ALL 2001 WRANGLER MODELS INCLUDE:

Air Bags* — Next Generation

driver and front-passenger,
includes weatherized front-passenger air bag on/off switch

Alternator — 117-ampere

Battery — 600-ampere,
maintenance-free

Brake-Park Interlock (Automatic transmission)

Brakes — Front disc/rear drum

Child Seat Tether Anchors — User-ready, located in the floor behind the backseat to help minimize movement of compatible aftermarket child seats



Clutch-Starter Interlock (Manual transmission)

Fuel Tank — 19-gallon, composite, driver-side filler and tethered cap

Glove Box — Locking

Instrument Cluster — Includes 100-mph speedometer, tachometer, odometer, trip odometer, electrical system voltmeter; gauges for fuel level, oil pressure, engine coolant temperature; indicator lamps for parking brake, ABS, turn signals, high-beam headlamp, seat belts, air bags, low fuel, check engine/emissions

Lighting

Exterior — Headlamps, 7-inch round sealed beam halogen

Interior — Courtesy lamp, located on the driver's side below instrument panel

Mirrors

Exterior — Dual, manual folding, black

Interior — Rearview day/night

Seat Belt Cluster Telltale — Indicator stays on after engine start until the driver buckles up

Seat Belts — Three-point Unibelt for all seating positions, front height-adjustable

Seats — Front reclining high-back bucket seats with passenger tip-and-slide

Skid Plates — Transfer case and fuel tank

Steering — Power-assisted

Suspension — Quadra-Coil™ live solid axles with front upper, and rear upper and lower control arms, front and rear coil springs, stabilizer bars and low-pressure gas-charged shock absorbers

Top — New four-ply soft top reduces wind noise and protects you from the elements

Transfer Case — Command-Trac® part-time 4WD

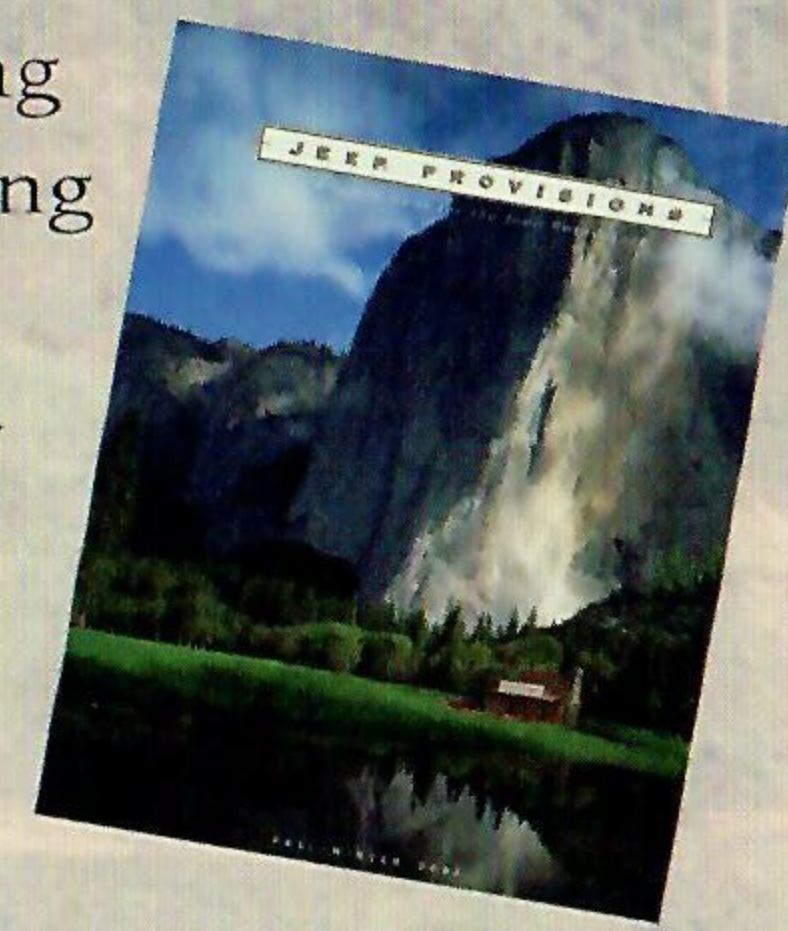
Transmission — Five-speed manual

Wiper System — Variable intermittent front

*Certified to the Federal Regulations that allow less forceful front air bags. Always use seat belts. Children 12 and under can be in the front seat only with the front-passenger air bag turned off and correctly using an infant or child restraint system, or a seat belt that is right for their age and size.

JEEP PROVISIONS

From the early morning haze over the Great Smoky Mountains to the sea spray at the water's edge, Jeep vehicles have been instrumental in giving adventures a fresh point of view for 60 years. In that time, we've learned that perspective comes along the journey, not simply from reaching the destination. In *Jeep Provisions*, you'll discover a collection of high-performance wearables, luggage, timepieces and more to accompany you along the way. For the latest copy, call 1-800-789-JEEP.



TREAD LIGHTLY!

We understand that freedom and responsibility are sometimes considered mutually exclusive ideas. But there is a common ground: Jeep vehicle ownership. In fact, we like to encourage everyone who enjoys the freedom a Jeep vehicle provides to keep environmental responsibility front and center. It's really very simple: Whenever you go off-road, stay on marked trails. Respect the environment and preserve it so that future generations can enjoy the same freedom you do. Because nature is so integral to what the Jeep Brand is about, all Jeep vehicles were photographed on approved Tread Lightly! backcountry trails or at designated water crossings.

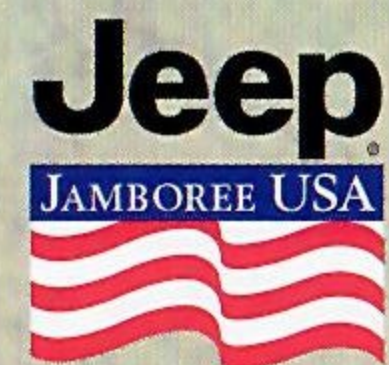
1-800-966-9900
www.treadlightly.org



JEEP JAMBOREES

Can't remember what you did last weekend? You'll remember this one for a lifetime. If you want to put your Jeep 4x4 to the test, then sign up for a Jeep Jamboree and prepare for a weekend like no other. To find out about any of the U.S., Canada, or Mexico Jamborees, or to register online, go to www.jeepunpaved.com/jamboree. You can also call 1-800-925-JEEP and request the *Jeep Jamboree Guidebook* for 2001

(available December 2000).

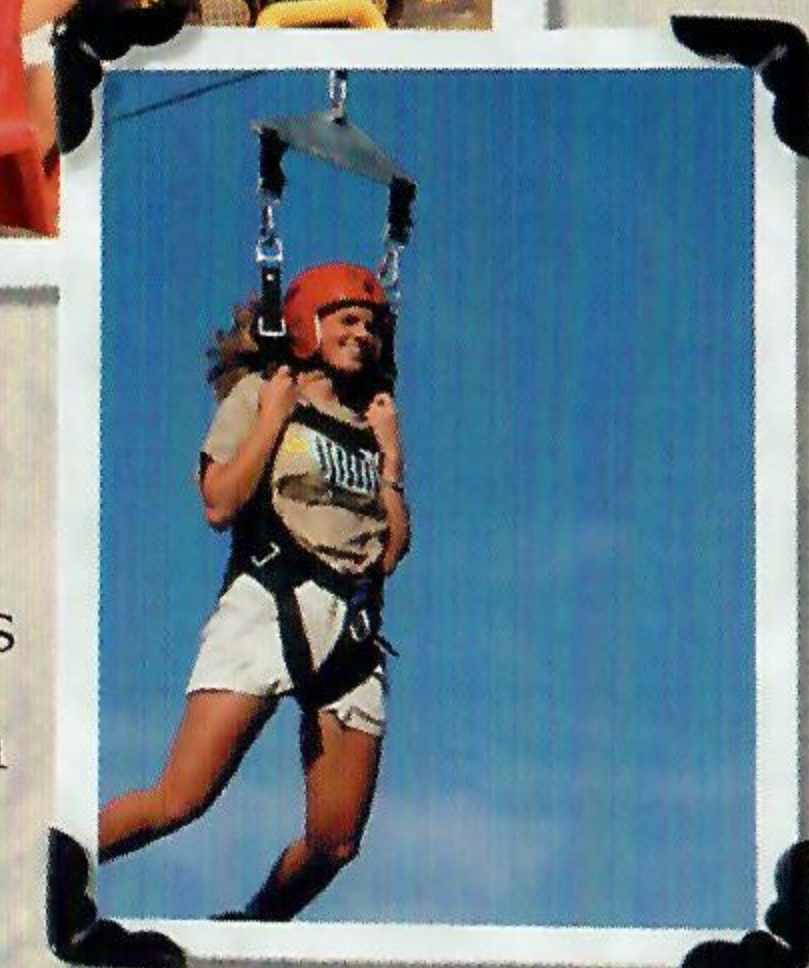
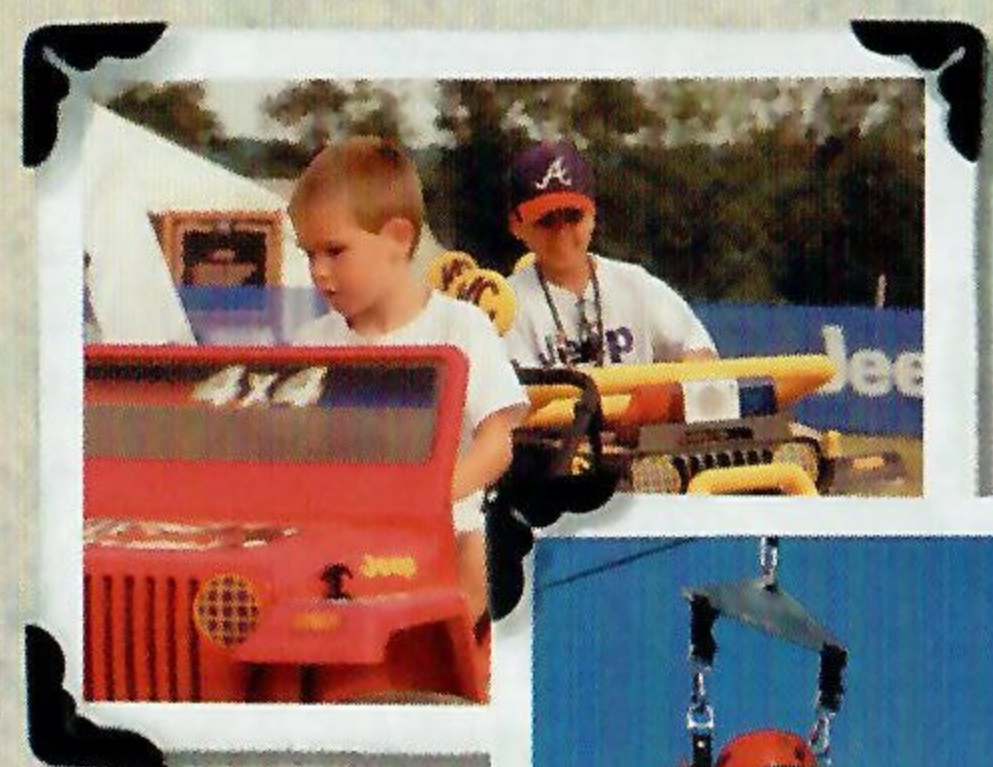
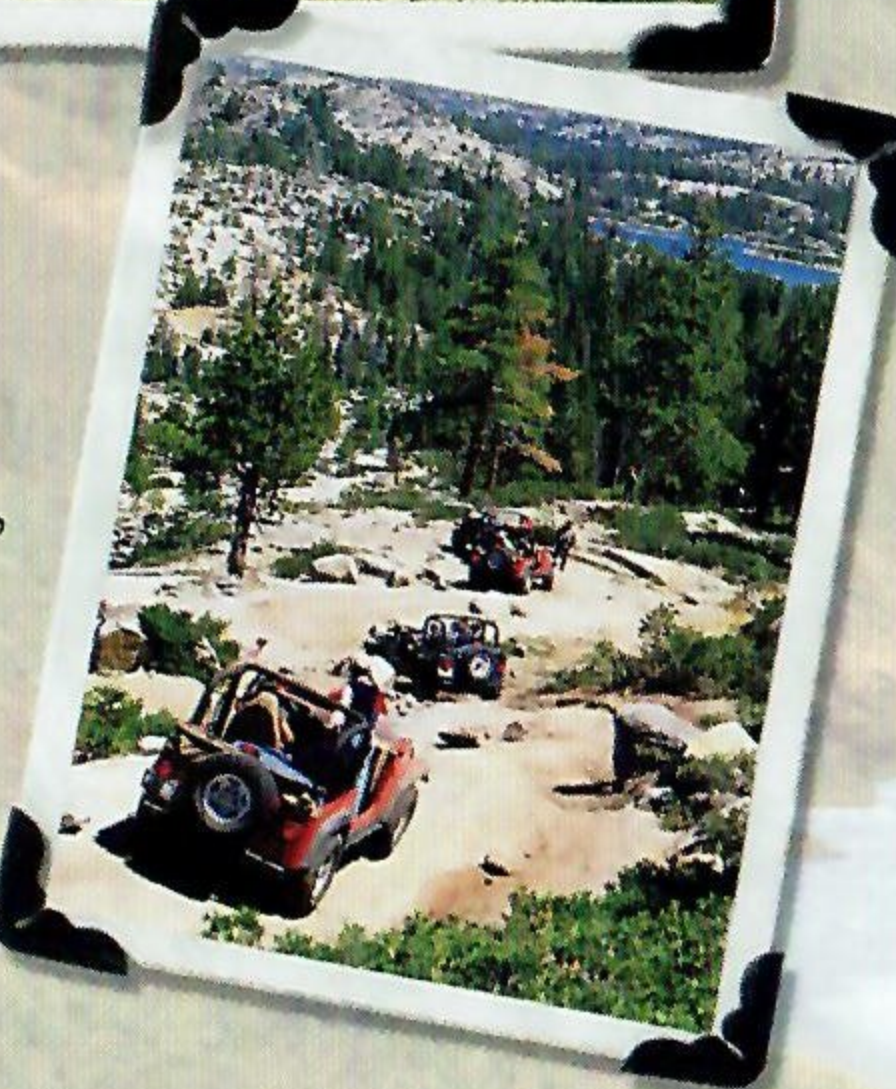


CAMP JEEP™

For fun the whole family can enjoy, join thousands of other Jeep vehicle owners at our annual outdoor bonanza: Camp Jeep. You'll get three full days of off-road trail riding, plus you can try your hand at one of the many Jeep lifestyle activities: fly fishing, mountain biking, archery, hiking, etc.



Call 1-800-789-JEEP now for more information.



JEEP ACCESSORIES FROM MOPAR

The Brush Guards, Side Steps, Roof-Mount Carriers and Off-Road Lights pictured on the vehicles here are created by the very engineers who designed your Jeep vehicle. If installed by the dealership at delivery, Jeep Accessories from Mopar are covered by the same 3/36 Bumper-to-Bumper Limited Warranty* (below) that covers your vehicle. To learn more about Wrangler, Cherokee and Grand Cherokee accessories, visit www.mopar.com. And, when you're ready to accessorize, ask for the Mopar Difference.



CUSTOMER ONE CARE™

At DaimlerChrysler Corporation, our commitment to complete customer satisfaction is evident in every sport-utility vehicle we sell. Long after a vehicle is driven away from the showroom, we will be there to ensure that our customers remain pleased with every new-vehicle purchase. To prove this commitment, all Jeep vehicles are covered by the 3/36 Customer One Care Plan†, which includes a 3-year/36,000-mile (whichever comes first) Bumper-to-Bumper Limited Warranty‡ and Roadside Assistance* for 3 years or 36,000 miles. Roadside Assistance provides 24-hour, 7-day-a-week Emergency Road Service, contacted by a nationwide toll-free number. A 5-year or 100,000-mile Outer-Panel Rust-Through Limited Warranty covers the cost of all parts and labor needed to repair exterior sheet metal panels if perforated by corrosion. The 3/36 Customer One Care Plan stays with the vehicle, transferring automatically to subsequent owners at no cost during the warranty period.

*See your dealer for additional details and a copy of this limited warranty.
 †Covers the complete vehicle against defects in materials and workmanship. Excludes wiper blades, clutch disc and brake linings, brake rotors and drums, normal maintenance items (these items are covered against defects for 12 months or 12,000 miles, whichever comes first) and tires (covered by their own manufacturer's warranty).
 ‡Roadside Assistance services are provided by Cross Country Motor Club, Inc. (In California, Cross Country Motor Club of California, Inc.)

LEASING

Leasing is a popular way to finance a new vehicle, and the **Gold Key Advantage®** products offered by Chrysler Financial Company L.L.C. have the flexibility to fit your vehicle choice and your lifestyle. **Gold Key Lease®** payments are typically lower and for a shorter term than conventional financing. At lease end, you can: 1) turn the vehicle in and lease a new one; 2) buy the vehicle and keep it; 3) buy the vehicle and sell it for a possible profit. If the idea of driving the vehicle you want and paying less for it sounds great, ask your dealer about Gold Key Lease. **Gold Key Plus®** is a great alternative to leasing for customers who want low payments and pride of vehicle ownership — Gold Key Plus offers both. Decide how long the vehicle will be driven and the trade-in value is guaranteed (less excess mileage and wear and tear). Ask your dealer for complete details. **Commercial Finance Options (CFO)** offers several finance and lease options to small and midsize businesses, municipalities and small fleet operators. A full range of automotive financing is available through Chrysler Financial, providing flexible payment plans and finance products for qualified buyers. Many of these plans can be customized to fit your particular budget and make your new vehicle even more affordable. Ask your salesperson for details about any of the above plans.

Chrysler Financial Company L.L.C. programs are offered subject to availability and state and local laws.

For information on leasing and other Gold Key Advantage products, visit www.chryslerfinancial.com.

DAIMLERCHRYSLER SERVICE CONTRACTS

Additional protection for owners is available through optional DaimlerChrysler Service Contracts. These service plans are available in a variety of time and mileage combinations to meet your driving needs. Ask your dealer for more information or call 1-800-442-2666.

Jeep, Grand Cherokee, Cherokee, Wrangler, the Jeep Wrangler radiator grille design, Quadra-Drive, Vari-Lok, Quadra-Trac II, Quadra-Coil, Selec-Trac, Sentry Key, Command-Trac, Customer One Care, Gold Key Advantage, Gold Key Lease and Gold Key Plus are trademarks of DaimlerChrysler.

HomeLink is a registered trademark owned by Johnson Controls, Inc. Infinity Gold and Infinity are trademarks of Infinity Systems, Inc.

All product illustrations, specifications and competitive comparisons are based upon current information at the time of publication approval. Although descriptions are believed to be correct, complete accuracy cannot be guaranteed. DaimlerChrysler Corporation reserves the right to make changes at any time, without notice or obligation, in prices, specifications, equipment, colors and materials, and to change or discontinue models. Some of the equipment shown or described throughout this catalog is available at extra cost. See your dealer for the latest information.



Jeep[®]

THERE'S ONLY ONE

For more information, visit us at www.jeep.com
or call 1-800-925-JEEP.

Jeep is a registered trademark of DaimlerChrysler.
Form no. 74-383-2145 8/00(900M) Litho in USA



The New Site For Car Brochures

DEZO'S GARAGE