

# General Motors '76



Chevrolet Chevette

# General Motors '76

## Today's concerns designed the 1976 General Motors Cars

*Fuel economy?* Most 1976 GM cars show an improvement of 1-3 miles per gallon over 1975. And, based on EPA test results, the average sales-weighted fuel economy increase of our 1976 cars over 1974 models totals a very satisfying 38%. For the fuel economy story, see page 31.

*Clean air?* 1976 GM cars are meeting the tough EPA standards. As more and more of these cars replace older higher-emitting vehicles, they will help "clean" the air.

*Safety?* 1976 GM cars incorporate many proven safety features: Energy-absorbing steering columns; three-point, easy-to-use lap/shoulder belts; thick laminate windshields; and many more.

*Size?* 1976 GM cars lead the pack. Whether you want a small-size Chevrolet Chevette or a regular-size Cadillac Fleetwood Brougham—or something in between—it's at your GM dealer's showroom.

*Price?* 1976 GM cars blanket the price range. If a GM dealer doesn't have a car to fit your pocketbook, that car isn't built in America—and probably nowhere else in the world either.

*Looks?* 1976 GM cars set the styling pace. Have you seen the international-size Cadillac Seville introduced just last spring? Chevrolet Monza, Pontiac Grand Prix, Oldsmobile Cutlass Salon, Buick Electra?

*Roadability?* 1976 GM cars have it. Get behind the wheel of a new GM car and feel the joy of driving a car with the fun of motoring as one of its primary design objectives.

*More?* Of course. And a trip to your local GM dealer will prove to you just how much value and pleasure is wrapped up in a 1976 General Motors car or truck. Browse through this picture catalog. Then see your GM dealer. He'll be waiting to show you the finest cars being sold in America today!

*Items referred to in this booklet as "optional" or "options" are at extra cost.*

# GM '76 Small-Size Cars

CHEVETTE WOODY Coupe



Custom Exterior, Sports Decor, Rally, or Woody option. There's also a 2-passenger Chevette Scooter model, a new kind of all-purpose, economy car just right for today's needs like shopping, commuting, and pleasure driving. Standard on the Chevettes is a new 1.4 litre (85 cubic-inch), 4-cylinder engine and a 4-speed manual transmission. Options such as AM/FM radio and tinted glass are offered on both the Chevette and Chevette Scooter models. Additional options on the base Chevette include a 1.6-litre (98 cubic-inch) version of the 4-cylinder engine, Turbo Hydra-matic transmission, air conditioning and vinyl roof.

## Chevrolet Chevette

Chevrolet's brand new entry in the small car market emphasizes efficiency: efficiency of size, space, fuel, service, operation, and performance. Chevette's 94.3-inch wheelbase makes it the smallest and lightest American-built car. Based on test results published in the EPA Buyer's Guide, the *Chevette* has an overall mileage rating unsurpassed by any 1976 car, U.S.-built or import. In fact, of all cars tested by the EPA, including imports, the Chevette is ranked first in the city driving schedule\*. The base Chevette is a 4-passenger, 2-door hatchback coupe that can be ordered, if desired, with either a

\*Ratings obtained with optional 1.6 litre engine and standard 4-speed transmission.



CHEVETTE Coupe With Custom Exterior

# GM '76 Small-Size Cars

there's the Cosworth Vega which features—as standard equipment—a twin-camshaft, electronically fuel injected 4-cylinder engine and a 4-speed manual transmission.

*\*NOTE: GM's 5-year/60,000-mile engine guarantee is an added value feature included in the 1976 Chevrolet Vega and Monza and Pontiac Astre and Sunbird cars. The guarantee covers 60,000 miles, or 5 years, whichever occurs first, for these cars equipped with 4-cylinder, 140 cubic inch engines. It means that should something go wrong with the engine, your Chevy or Pontiac dealer will fix it... free. The guarantee covers repairs to the cylinder block, cylinder head, all internal engine parts, intake and exhaust manifolds, and water pump, made necessary because of defects in material or workmanship. It does not cover repairs required because of accident, misuse or lack of proper maintenance. See your GM dealer for complete guarantee details.*



VEGA GT Hatchback Coupe

## Chevrolet Vega

The subcompact Vega for 1976 provides quality, durability, and easy maintenance with economy of operation. Vega's variety-packed base model line-up includes 2-door hatchback coupe, sport coupe, and station wagon models. The standard power train for the base Vega models is a 140 cubic-inch 4-cylinder engine (guaranteed for 5 years or 60,000 miles)\* and 3-speed manual transmission. Four- and 5-speed manual transmissions or Turbo Hydra-matic are optional. A wide range of performance, trim, and comfort and convenience options allows you to give your Vega a personal touch. For the sports car enthusiast,



VEGA SPORT COUPE



MONZA 2+2 Hatchback

Chevrolet  
**Monza**

Chevrolet's subcompact car with big appeal and a sensible price. There are two subcompact 1976-model Monzas to choose from—a 2+2 hatchback coupe and a Towne Coupe, both on a 97-inch wheelbase. A Cabriolet Equipment option, featuring a rear-half vinyl roof cover, and a Sport Equipment option are available on the Towne Coupe. The standard power train for the base Monza models is a 2.3 litre (140 cubic-

inch) 4-cylinder engine guaranteed for 5 years or 60,000 miles (details on page 2), with a 3-speed manual transmission. Both 4- and 5-speed manual transmissions and Turbo Hydra-matic are optional. Monza's expanded list of options for 1976 includes a stereo tape system with AM radio, a newly styled sport steering wheel, a new interior trim option, and a brand new performance and handling package option—the "Spyder."



MONZA TOWNE COUPE With Cabriolet Equipment



CAMARO TYPE LT Coupe

## Chevrolet Camaro

Camaro, one of America's beautiful automobiles, enters 1976 with a new 305 cubic-inch V8 engine and a dressy Rally Sport option. There are three versions of the Camaro on a 108-inch wheelbase: the 6- and 8-cylinder sport coupe and the Type LT coupe, which offers added luxury touches. Power brakes (with front discs) are standard on all 1976 Camaros equipped with a V8 engine and are optional with the 6-cylinder engine.

## Chevrolet Corvette

America's only true production sports car boasts new power train developments and styling refinements for 1976. The 2-door Corvette is a 98-inch wheelbase sport coupe with a 350 cubic-inch, 4-barrel V8 engine with either a 4-speed manual or Turbo Hydra-matic transmission. A special V8 engine, designed for added performance, is optional (Turbo Hydra-matic is optional with the special V8 engine.) Removable roof panels are standard on the Corvette.



# GM '76 Small-Size Cars



NOVA CONCOURS 4-Door Sedan

**Chevrolet**  
**Nova**

Chevrolet's family-size compact car broadens its appeal in 1976 with new levels of class and luxury. Featuring new design refinements, the 111-inch wheelbase Nova includes 2-door coupe, hatchback coupe, and 4-door sedan models—offered in both the base Nova and new top-of-the-line Concours series. The Nova and Concours series each offers two base engines to choose from: a 250 cubic-inch 6-cylinder, or a new 305 cubic-inch

V8. A 3-speed manual transmission is standard on all Nova models, with 4-speed manual and Turbo Hydra-matic available as options. Appearance changes for the base Nova include a restyled front end highlighted by a new grille treatment and parking lamps. Added distinction is given to the Concours series with special chrome trim treatment, distinctive special insignia and hood ornament, and a luxurious interior decor.



NOVA Coupe

Pontiac's subcompact Astre—offered in 2-door coupe, 2-door hatchback, and 2-seat Safari station wagon models—comes equipped with a 140 cubic-inch 4-cylinder engine guaranteed for 5 years or 60,000 miles (details on p. 2) and 3-speed manual transmission. Two new interior trim packages are offered as options for 1976. For those who want to personalize their Astre hatchback or Safari wagon, there's a GT option that includes a 140 cubic-inch, 2-barrel 4-cylinder engine, steel-belted radial ply tires with Radial Tuned Suspension, and distinctive interior and exterior appointments.

Pontiac  
**Astre**



ASTRE GT Hatchback Coupe



SUNBIRD 2-Door Coupe

Sunbird is Pontiac's 1976 all-new entry in the sport subcompact field. Featuring distinctive styling with dual rectangular headlamps, the Sunbird has a standard 140 cubic-inch 4-cylinder engine guaranteed for 5 years or 60,000 miles teamed with a 3-speed manual transmission. A 231 cubic-inch V6 engine is optional as are 4- and 5-speed manual and Turbo Hydra-matic transmissions. Available options include a luxury appointment group, air conditioning, power steering, steel-belted radial ply tires, and vinyl roof.

Pontiac  
**Sunbird**



# GM '76 Small-Size Cars

Ventura is Pontiac's sensibly-priced compact car. There are 2-door coupes, hatchback coupes, and 4-door sedans to choose from in the standard Ventura and top-of-the-line Ventura SJ series, all built on a 111.1-inch wheelbase. Ventura's standard engine is a 250 cubic-inch 6-cylinder engine. V-8 engines of 260 and 350 cubic-inch displacement are optional. An attractive Landau option with formal roofline is offered on the 2-door coupes.

Pontiac  
**Ventura**



FIREBIRD ESPRIT Hardtop Coupe With Canopy Vinyl Top



VENTURA SJ 4-Door Sedan

Pontiac's sporty Firebird for 1976 features body-colored Endura bumpers. Offered in a 2-door hardtop coupe on a 108.1-inch wheelbase, Firebirds can be ordered in four models: the base Firebird, the stylish Esprit, and the spirited Formula and Trans Am. Among new Firebird options (except on the Trans Am) is a canopy vinyl top. A bold new appearance package is also optional on the Formula model.

Pontiac  
**Firebird**

Starfire is Oldsmobile's sporty 4-passenger, 97-inch wheelbase subcompact offered as a hatchback coupe in the base Starfire and Starfire SX series. The Starfire SX features more luxurious trim, steel-belted radial ply tires, and a custom sport steering wheel as standard equipment. Both Starfires have, as standard, a 231 cubic-inch V6 engine with a 4-speed manual transmission. Turbo Hydra-matic and 5-speed manual transmissions, air conditioning, power steering, and power brakes (with front discs) are some of the options available.

Oldsmobile  
**Starfire**



OMEGA BROUGHAM 4-Door Sedan



STARFIRE SX Sport Coupe

Oldsmobile  
**Omega**

Oldsmobile's compact 111.2-inch wheelbase Omega is offered in seven models for 1976: the F85 2-door coupe (the lowest-priced Omega), and the standard Omega and new Omega Brougham, both of which are offered in 2-door coupe, hatchback, and 4-door sedan models. The standard power train on all Omega models is a 250 cubic-inch 6-cylinder engine and a 3-speed manual transmission. Optional engines are a 260 or 350 cubic-inch V8. Turbo Hydra-matic is also optional on all Omega models, while a 5-speed manual transmission can be ordered on most Omega models with the 260 cubic-inch V8. A sporty SX option is offered on the standard Omega coupe and hatchback.

# GM '76 Small-Size Cars

Buick

## Skyhawk

Buick's subcompact Skyhawk and Skyhawk S are sporty 4-passenger hatchback coupes that are equipped with a 231 cubic-inch V6 engine and 4-speed manual transmission. New on the Skyhawk is an optional fixed, tinted glass roof with a wide brushed-metal molding that wraps over the roof of the car. The 97-inch wheelbase Skyhawk has a number of other new features, such as an optional 5-speed manual transmission and a standard Freedom battery. Small and powerful, the Freedom battery—which is also standard or optional on a number of other GM models—requires no periodic maintenance and has a built-in “state of charge” indicator which lets you know at a glance if the battery needs recharging.



SKYHAWK Hatchback Coupe With Fixed Astro Roof

SKYLARK S/R Coupe with Landau Roof



The compact Buick Skylark for 1976 highlights a new front grille theme and new interior fabrics and is offered in three series—the Skylark, Skylark S, and Skylark S/R. There are seven models in all to select from: three coupes, two hatchback coupes, and two sedans, all on a 111-inch wheelbase and all equipped with a 231 cubic-inch V6 as standard equipment. A 3-speed manual transmission is standard on the Skylark and Skylark S, while the Skylark

Buick  
**Skylark**

S/R has Turbo Hydra-matic as standard. A Landau top can be ordered as an option on the Skylark coupes.

# GM '76 Mid-Size Cars

## Chevrolet Chevelle

Chevrolet for 1976 offers seventeen Chevelle models in four series: the Malibu, which is the lowest-priced Chevelle; a sporty Laguna Type S-3; the luxurious Malibu Classic; and the roomy two- and three-seat station wagons in the Malibu, Malibu Classic, and Malibu Classic Estate series.



CHEVELLE MALIBU 4-Door Sedan



GRAND LEMANS 2-Door Hardtop Coupe

Smooth performance, driving ease, and a choice of seven different models highlight the stylish 1976 Pontiac LeMans mid-size car line-up. The models include the base LeMans and Grand LeMans—both offered in 2-door hardtop coupe (112-inch wheelbase) and 4-door hardtop sedan models (116-inch wheelbase)—and the LeMans Sport Coupe. Two Safari station wagon models (116-inch wheelbase) round out the LeMans line-up. A 250 cubic-inch 6-cylinder engine is standard on all LeMans coupe and sedan models, with V8 engines

## Pontiac LeMans

available as options. Standard on the Safari wagons is a 400 cubic-inch, 2-barrel V8 engine and Turbo Hydra-matic.

The mid-size Oldsmobile Cutlass for 1976, with its striking new front-end treatment, is offered in five series—the Cutlass S coupe and sedan; Cutlass Supreme coupe, sedan, and 2-seat station wagon with an optional third seat; Cutlass Salon coupe and sedan; the Vista Cruiser 2-seat station wagon with an optional third seat; and the new Cutlass Supreme Brougham coupe. This new entry, along with Cutlass Supreme and Salon coupes, are Oldsmobile's mid-size personal luxury cars (see page 13). All Cutlass models have a standard 250 cubic-inch 6-cylinder engine except the Salon models, which have a standard 260 cubic-inch V8, and the station wagons which come equipped with a 350 cubic-inch V8. A re-

**Oldsmobile**  
**Cutlass** removable tinted-glass hatch roof is offered as an option on the Supreme, Salon, and Brougham coupes.



**CENTURY SPECIAL** Hardtop Coupe



**CUTLASS S Colonnade** Hardtop Coupe

Buick's mid-size cars for 1976 include four different coupes on a 112-inch wheelbase in either the Century Special, Century, Century Custom, or top-of-the-line Regal series. (There's more information on page 13 about Buick's mid-size personal luxury Regal and Century Custom coupes.) Three sedans, plus a 2- or 3-seat station wagon in the Custom series — all on a 116-inch wheelbase — complete Buick's mid-size line-up.

**Buick**  
**Century**

# GM '76 Personal-Size Cars

The 1976 Monte Carlo adds to its prestige as a mid-size personal luxury car with a new head-on look and new touches in comfort and convenience. The Monte Carlo is offered in either the Landau or regular coupe model. The standard power train is a 305 cubic-inch V8 engine teamed with a Turbo Hydra-matic transmission.

## Chevrolet Monte Carlo



MONTE CARLO Landau Coupe



GRAND PRIX SJ Hardtop Coupe

A new front-end appearance, highlighted by dual rectangular headlamps, accents the 1976 Grand Prix. The Grand Prix has been lowered in price and offers outstanding value in the rapidly expanding mid-size personal luxury car market. Standard on the Grand Prix model is a full-width notchback bench seat and a 350 cubic-inch, 2-barrel V8 engine. Another model, the Grand Prix "SJ," comes equipped with bucket seats, console, and a 400 cubic-inch, 4-barrel V8 engine. Also offered is the luxury option—the Grand Prix "LJ." Turbo Hydra-matic transmission, steel-belted radial ply tires, power steering, and power brakes (with front discs) are standard on both Grand Prix models.

## Pontiac Grand Prix

The new Cutlass Supreme Brougham, as well as the Cutlass Supreme and Cutlass Salon coupes, are Oldsmobile's entries in the mid-size personal luxury car field. The Cutlass Supreme Brougham 2-door coupe features 60/40 divided front bench seats with the loose pillow look introduced originally on the Oldsmobile 98 Regency. Power steering, power brakes (with front discs), and steel-belted radial ply tires are standard equipment on the Cutlass Supreme Brougham and Turbo Hydra-matic, air conditioning, and a removable hatch roof are a few of the options that can be ordered.

Oldsmobile  
**Cutlass Supreme Brougham**



REGAL Coupe



CUTLASS SUPREME BROUGHAM Colonnade Hardtop Coupe

Graceful styling combined with quiet operation and responsive performance describe the sleek 1976 Regal and Century Custom coupes—Buick's distinctive mid-size personal luxury cars. Both models have a 112-inch wheelbase and come complete with a wide array of standard equipment items. Richly appointed interiors add to the appeal of these beautiful mid-size, mid-priced automobiles.

Buick  
**Regal**

# GM '76 Personal-Size Cars

Buick's 1976 Riviera hardtop coupe incorporates those comfort and luxury features that have distinguished this personal-size car over the years. The 122-inch wheelbase Riviera comes equipped with a 455 cubic-inch V8 engine combined with a Turbo Hydra-matic transmission. Steel-belted radial ply tires are standard. For an added touch of luxury, the Riviera can be

**Buick**  
**Riviera**

ordered with an all-new S/R interior option that includes individual front seats with console.



TORONADO BROUGHAM



RIVIERA S/R With Landau Roof

Toronado — Oldsmobile's personal car with the agility and traction of front-wheel drive—is offered in two models: the Custom Coupe and the Brougham Coupe. Standard equipment on the Toronado includes a 455 cubic-inch V8 engine, Turbo Hydra-matic, steel-belted radial ply tires, power brakes (with front discs), power steering, and a luxurious interior designed for comfort and convenience.

**Oldsmobile**  
**Toronado**



Cadillac  
**Eldorado**

Cadillac Eldorado—the ultimate in a personal-size car that combines luxury with sportiness. Eldorado can be ordered in either a coupe or convertible model, both of which feature front-wheel drive and four-wheel disc brakes. The Eldorado convertible is the only convertible now being built in America, and it will not be offered in 1977.



ELDORADO Coupe



ELDORADO Convertible

In addition to the host of features that are standard on the Eldorado—such as Automatic Climate Control air conditioning, power steering, Automatic Level Control, Turbo Hydramatic transmission, steel-belted radial ply whitewall tires, AM/FM signal seeking stereo radio, and a 500 cubic-inch V8 engine—there are many optional items which provide additional personalized luxury as well as owner comfort, convenience, and value.

# GM '76 Regular-Size Cars



CAPRICE CLASSIC 4-Door Sedan

New for 1976 is the 4-door Impala S sedan, Chevrolet's lowest-priced regular-size car. The standard power train for all regular-size Chevrolets (except station wagon models) is a 350 cubic-inch V8 engine with Turbo Hydra-matic transmission. A 400 cubic-inch V8 is standard on station wagons. All are a pleasure to own and a pleasure to drive.

Chevrolet  
**Impala**



IMPALA CUSTOM Coupe

## Chevrolet Caprice

The Chevrolet Caprice Classic and Impala for 1976 retain all the characteristics that have earned these 121.5-inch wheelbase regular-size cars their long-standing reputation for roominess, easy handling, quiet and smooth ride, quality and value, and beautiful styling. Thirteen models are offered in 1976—four coupes, five sedans, and four station wagons—all of which feature new front-end styling and refinements in engine and brake design.



CATALINA 4-Door Sedan With Custom Option

engine (455 cubic-inch V8 on station wagon models) plus Turbo Hydra-matic transmission, power steering, and power brakes (with front discs) are some of the standard equipment items. The coupes and sedans have a 123.4-inch wheelbase, while the wheelbase for the station wagons is 127.0 inches.

Pontiac  
**Bonneville**

**Pontiac Catalina** From their elegant exterior lines to their richly appointed interiors, Pontiac's regular-size Catalina and Bonneville 2- and 4-door models blend roominess and comfort with smooth ride and performance. New to Pontiac's regular-size line-up in 1976 is the luxurious Bonneville Brougham series. Add these models to Pontiac's Catalina Safari and Grand Safari 2-seat station wagons (third seat optional), and you have a total of eight regular-size Pontiacs from which to select. A 400 cubic-inch V8



BONNEVILLE BROUGHAM 4-Door Hardtop Sedan

DELTA 88 ROYALE Hardtop Sedan



The standard engine for the Delta series is a 350 cubic-inch V8. A 455 cubic-inch V8 is standard on the Ninety-Eight and Custom Cruiser series. For 1976, the Delta Royale coupe has a Crown Landau option that includes a padded landau vinyl roof, color-keyed wheel covers and a stand-up hood ornament.

Oldsmobile  
**Ninety-Eight**

Oldsmobile

**Delta 88** Fourteen models are offered in Oldsmobile's regular-size Delta 88, Ninety-Eight, and Custom Cruiser line-up—a hardtop coupe, hardtop sedan, and town sedan in the Delta 88 and Delta 88 Royale series; a hardtop coupe and hardtop sedan in the Ninety-Eight Luxury and Ninety-Eight Regency series; and 2- and 3-seat wagon models in the Custom Cruiser series. All models have Turbo Hydra-matic as standard equipment.



NINETY-EIGHT REGENCY Hardtop Sedan

# GM '76 Regular-Size Cars



LE SABRE CUSTOM Coupe With Landau Roof

**Buick**  
**LeSabre** A new front-end design and headlamp treatment give Buick's LeSabre, LeSabre Custom, Electra, and Estate Wagon models a noticeably different appearance for 1976. The LeSabre models—offered in a coupe, 4-door hardtop, or sedan—are built on a 124-inch wheelbase. Turbo Hydra-matic transmission is standard equipment. The Electra 225 and Electra Limited, both

offered in coupe and 4-door hardtop models, are built on a 127-inch wheelbase—as are the 2- and 3-seat Estate Wagon models—and all come equipped with a 455 cubic-inch V8 engine and Turbo Hydra-matic as standard. Power brakes (with front discs) and power steering are just a few of the many other standard items offered on the LeSabre, Electra, and Estate Wagon models. The complete list is impressive, as are the cars.

**Buick**  
**Electra 225**



ELECTRA LIMITED Hardtop Sedan

# GM '76 Regular-Size Cars



COUPE DE VILLE

## Cadillac DeVille

The Cadillac DeVille—one of America's most popular prestige luxury cars with traditional long-lasting value—is offered in coupe and hardtop sedan models. The elegant lines of the DeVille can be complemented with any one of Cadillac's 15 standard or 6 optional Firemist paint colors (13 new for 1976) and a rich and tasteful selection of beautiful interiors in the finest leathers and fabrics.

Calais models offer Cadillac's full-size comfort, skilled craftsmanship, and engineering excellence at an unusually attractive price. Standard equipment on the Calais, and on all Cadillacs, includes Turbo Hydra-matic transmission, power windows, power steering, power brakes, Automatic Climate Control air conditioning, and steel-belted radial ply whitewall tires.

Cadillac also offers the Fleetwood Brougham 4-door sedan and the Fleetwood 9-passenger sedan and limousine.

Cadillac  
**Calais**



CALAIS Sedan

# International-Size Car



SEVILLE

## Cadillac Seville

International in size, timeless in styling, Cadillac in craftsmanship. Designed to be one of the finest production cars built anywhere in the world. The Seville, a 114.3-inch wheelbase, 5-passenger luxury 4-door sedan, is powered by a standard 5.7 litre electronically fuel-injected V8 engine. Although the Seville is about 25 inches shorter and 800-1,000 pounds lighter than regular-size U.S. luxury cars, it has about the same overall height to provide interior roominess and comfort. An impressive array of standard features makes Seville one of the most fully-equipped cars in the world.

## GENERAL MOTORS 1976 PASSENGER CAR SPECIFICATIONS AND MANUFACTURER'S SUGGESTED RETAIL PRICES

The following section lists the body styles offered in all lines of General Motors 1976 passenger cars for sale in the U.S. as well as some of the major factory-installed optional equipment and accessories. Many other items of factory- and dealer-installed equipment are available and your local GM dealer should be consulted for more detailed information.

Some of the engines and engine-transmission combinations listed throughout this booklet, and in this section, are not available on GM cars sold in California. Residents of California should consult their GM dealer for further details concerning engine and transmission availability.

The Manufacturer's Suggested Retail Prices shown for each model, as well as the optional equipment and accessories listed, do not include destination charges or state and local taxes, if any.

*All specifications, prices, and other information provided herein are subject to change without notice.*

**FOR ADDITIONAL INFORMATION, SEE YOUR GENERAL MOTORS DEALER.**

## BODY STYLES, STANDARD AND OPTIONAL ENGINES AND TRANSMISSIONS

Chevrolet	Base Engine	Sedan 4-Door	Sport Sedan 4-Door	Coupe 2-Door	Sport Coupe 2-Door	Hatch-back Coupe 2-Door	Landau Coupe 2-Door	Station Wagon		Transmissions				4 Cyl 1.4 litre (85 cid)* 1 bbl** 52 hp†	4 Cyl 1.6 litre (98 cid) 1 bbl 60 hp
								2-Seat	3-Seat	3-Speed Manual	4-Speed Manual	5-Speed Manual	Turbo Hydra-matic		
CHEVETTE SCOOTER	L4					\$2,899									
CHEVETTE	L4					3,098									
VEGA	L4				\$2,984	3,099		\$3,227	—						
VEGA ESTATE	L4							3,450	—						
COSWORTH VEGA	L4					6,066									
MONZA 2+2	L4					3,727									
MONZA TOWNE COUPE	L4			\$3,359											
CAMARO SPORT COUPE	L6				3,762										
CAMARO SPORT COUPE	V8				3,927										
CAMARO TYPE LT	V8				4,320										
CORVETTE	V8			7,605											
NOVA	L6	\$3,283		3,248		3,417									
	V8	3,448		3,413		3,579									
NOVA CONCOURS	L6	3,830		3,795		3,972									
	V8	3,995		3,960		4,134									
CHEVELLE MALIBU	L6	3,671		3,636									260		
	V8	4,201		4,166				4,543	\$4,686				X		
CHEVELLE MALIBU CLASSIC	L6	4,196		3,926			\$4,124						260 <sup>3</sup>		
	V8	4,490		4,455			4,640	4,776	4,919						
CHEVELLE MALIBU CLASSIC ESTATE	V8							4,971	5,114				X		
CHEVELLE LAGUNA TYPE S-3	V8			4,622											
MONTE CARLO COUPE	V8			4,673									X		
MONTE CARLO LANDAU COUPE	V8						4,966								
IMPALA S	V8	4,507													
IMPALA	V8	4,706	\$4,798					5,166	5,283				X		
IMPALA CUSTOM	V8			4,763			5,058								
CAPRICE CLASSIC	V8	5,013	5,078	5,043			5,284						X		
CAPRICE ESTATE	V8							5,429	5,546						

(1) Available Only With 5.7 Litre, 165 hp, V8 Engine. (2) Available Only With 2.3 Litre, 84 hp, 4-Cyl Engine. (3) Turbo Hydra-matic Is Standard On Malibu Classic Sedan. (4) 5.7 Litre, 145 hp, V8 Engine Is Standard On Station Wagon Models. (5) Special 5.7 Litre, 4 bbl, 210 hp, V8 Engine Also Available: \$481. (6) 6.6 Litre, 175 hp, V8 Engine Is Standard On Impala Wagon. (7) With Front And Rear Discs. (8) Required When Air Conditioning Is Ordered. (9) Caprice 4-Door Models: \$159. (10) Vinyl Roof Is Standard On Landau Coupe Model. (11) Impala Wagon: \$150. (12) Included With Cabriolet Equipment. (13) \$223 On Impala Station Wagons. (14) \$134 With Special 5.7 Litre, 4 bbl, 210 hp, V8 Engine. (15) \$118 On Malibu And Malibu Classic Station Wagons. (16) Available Only With 2.3 Litre, 84 hp, 4-Cyl And 4.3 Litre, 110 hp, V8 Engines. (17) Interim Model Introduction. (18) Cabriolet Roof Cover Available On Coupe At \$150. (19) V8 Is Available on Towne Coupe But Only With Cabriolet Or Sport Equipment Options. (20) Available Only With Console.

SEE YOUR CHEVROLET DEALER FOR MORE DETAILED INFORMATION



## SOME MAJOR OPTIONS, AND MANUFACTURER'S SUGGESTED RETAIL PRICES

4 Cyl 2.3 litre (140 cid)		4 Cyl 2.0 litre (122 cid) EFI ▲ 110 hp	6 Cyl 4.1 litre (250 cid) 1 bbl 105 hp	V8 4.3 litre (262 cid) 2 bbl 110 hp	V8 5.0 litre (305 cid) 2 bbl 140 hp	V8—5.7 litre (350 cid)			V8 6.6 litre (400 cid) 4 bbl 175 hp	V8 7.4 litre (454 cid) 4 bbl 225 hp	Air Condi- tioning (a)	Power Brakes (With Front Discs)	6-Way Power Bench Seat (b)	Power Steering	Power Windows	Radios (c)			Vinyl Roof Cover- ing
1 bbl 70 hp	2 bbl 84 hp					2 bbl 145 hp	4 bbl 165 hp	4 bbl 180 hp								AM	AM-FM	AM-FM Stereo	
—	—	—	—	—	—	—	—	—	—	—	—	\$55 <sup>17</sup>	—	—	—	\$70	\$129	—	—
											\$424								\$ 90
X	\$56	—	—	—	—	—	—	—	—	—	424	55	—	\$120	—	70	129	\$212	—
—	—	X	—	—	—	—	—	—	—	—	—	—	—	—	—	—	—	—	—
X	56	—	—	\$224 <sup>19</sup>	—	—	—	—	—	—	424	55	—	120	—	70	129	212	— <sub>12</sub>
—	—	—	X	—	—	—	—	—	—	—	479	58	—	—	—	—	—	—	—
—	—	—	—	—	X	—	\$85	—	—	—	452	X	—	X	\$ 99 <sup>20</sup>	75	137	226	96
—	—	—	—	—	—	—	—	X <sup>5</sup>	—	—	523	59 <sup>7</sup>	—	151	107	—	187	281	—
—	—	—	X	—	—	—	—	—	—	—	479	58	—	—	—	—	—	—	—
—	—	—	—	—	X	—	85	—	—	—	452	X	—	136	2-Door: \$ 99	75	137	226	96 <sup>18</sup>
—	—	—	X	—	—	—	—	—	—	—	479	58	—	—	4 Door: \$140	—	—	—	—
—	—	—	—	—	X	—	85	—	—	—	452	X	—	—	—	—	—	—	—
—	—	—	X	—	—	—	—	—	—	—	—	58 <sup>8</sup>	—	136 <sup>8</sup>	2 Door: \$ 99	—	—	—	109
—	—	—	—	—	X <sup>4</sup>	\$30 <sup>4</sup>	—	—	—	—	—	X	—	X	—	—	—	—	—
—	—	—	X	—	—	—	—	—	—	—	—	58 <sup>8</sup>	—	136 <sup>8</sup>	—	—	—	—	—
—	—	—	—	—	X <sup>4</sup>	30 <sup>4</sup>	—	—	—	—	471	—	\$124	—	4 Door: \$140	75	137	226	109 <sup>10</sup>
—	—	—	—	—	—	X	—	—	—	—	—	X	—	X	—	—	—	—	—
—	—	—	—	—	X	30	—	—	148	—	471	X	124	X	99	75	146	226	129
—	—	—	—	—	—	—	—	—	—	—	—	—	—	—	—	—	—	—	X
—	—	—	—	—	—	X <sup>6</sup>	56	—	120 <sup>6</sup>	\$375 <sup>13</sup>	485	X	126	X	159	76	148	229	125
—	—	—	—	—	—	—	—	—	—	—	—	—	—	—	105	—	—	—	125 <sup>11</sup>
—	—	—	—	—	—	X	56	—	120	350	485	X	126	X	105 <sup>9</sup>	76	148	229	125 <sup>10</sup>
—	—	—	—	—	—	—	—	—	X	223	—	—	—	—	159	—	—	—	150

X (Standard). — (Not Available). \*cid (Cubic Inch Displacement). \*\*1 bbl (1 Barrel Carburetor). †Horsepower (hp) Ratings Are S.A.E. Net And Represent The Power Output Of The Engines Installed In The Automobiles. ▲EFI (Electronic Fuel Injection Engine). (a) Prices Indicated Are For Manually Controlled Air Conditioning Systems. Comfortron Automatically Controlled Systems Are Available On Impala And Caprice Models At A Suggested Price Of \$567. (b) Power Operated 6-Way 50/50 Bench Seat Also Available On Certain Models At Additional Cost. (c) AM Radio And AM-FM Stereo Radio With 8-Track Tape Player Also Available On Certain Models At Additional Cost.

AND PRICES OF OTHER AVAILABLE OPTIONS ON THESE MODELS.

## BODY STYLES, STANDARD AND OPTIONAL ENGINES AND TRANSMISSIONS

Pontiac	Sedan 4-Door	Hardtop		Hatch- back Coupe 2-Door	Coupe 2-Door	Safari Station Wagons		Transmissions				4 cyl.-140 cid*		L6	V6
		2-Door	4-Door			2-Seat	Avail- able 3rd Seat	3-Speed Manual	4-Speed Manual	5-Speed Manual	Turbo Hydra- matic	1 bbl** 70 hp†	2 bbl 84 hp	250 cid 1 bbl 110 hp	231 cid 2 bbl 110 hp
ASTRE				\$3,179	\$3,064	\$3,306	—	X	\$ 60	\$244 <sup>1</sup>	\$244	X	\$56	—	—
SUNBIRD					3,431			X	60	244 <sup>1</sup>	244	X	56	—	\$189
FIREBIRD		\$3,906						X	242 <sup>14</sup>	—	262	—	—	X	—
FIREBIRD ESPRIT		4,162						—	N/C	—	X	—	—	—	—
FIREBIRD FORMULA		4,566						—	X	—	N/C	—	—	—	—
FIREBIRD TRANS AM		4,987						X	—	262 <sup>2</sup>	262	—	—	X	—
VENTURA	\$3,361			3,503	3,326			X	—	262 <sup>2</sup>	262	—	—	X	—
VENTURA SJ	3,637			3,775	3,612			X	—	262 <sup>2</sup>	262	—	—	X	—
LE MANS		3,768	\$3,813					X	—	—	262	—	—	X	—
LE MANS SPORT COUPE		3,916						—	—	262 <sup>2</sup>	262	—	—	X	—
GRAND LE MANS		4,330	4,433					—	—	—	X	—	—	—	—
LE MANS SAFARI						4,687	\$133	—	—	—	X	—	—	—	—
GRAND LE MANS SAFARI						4,928	133	—	—	—	X	—	—	—	—
CATALINA	4,767	4,844						—	—	—	X	—	—	—	—
CATALINA SAFARI						5,324	149	—	—	—	X	—	—	—	—
BONNEVILLE		5,246	5,312					—	—	—	X	—	—	—	—
BONNEVILLE BROUGHAM		5,734	5,906					—	—	—	X	—	—	—	—
GRAND SAFARI						5,746	149	—	—	—	X	—	—	—	—
GRAND PRIX		4,798						—	—	—	X	—	—	—	—
GRAND PRIX SJ		5,223						—	—	—	X	—	—	—	—

(1) Available Only When 2 bbl, 140 cid 4-cyl And 2 bbl, 231 cid V6 Engines Are Ordered. (2) Available Only When 260 cid V8 Engine And Bucket Seats Are Ordered. (3) Available Only With Turbo Hydraulic. (4) Available Only In California. (5) Credited When 2 bbl, 400 cid V8 Engine Is Ordered In Place Of The Standard Engine. (6) Power Brakes Standard On 4-Door Grand LeMans. (7) 4-Door Models: \$140. (8) 4-Door Models: \$159. (9) 2-Door Models: \$147. (10) 455 4 bbl Performance Package. (11) Available Only With Custom Cushion, Custom Sport Or Formula Steering Wheel. (12) 145 hp. Rating. (13) Not Available With Manual Column Shift. (14) Available Only With 4 bbl, 400 cid V8 Engine. (15) Available Only With Console. (16) Required When Other Selected Equipment Is Ordered.

SEE YOUR PONTIAC DEALER FOR MORE DETAILED INFORMATION

## BODY STYLES, STANDARD AND OPTIONAL ENGINES AND TRANSMISSIONS

Oldsmobile	Sedan 4-Door	Hardtop		Colonnade Hardtop		Hatch- back Coupe 2-Door	Coupe 2-Door	Station Wagon		Transmissions					
		2-Door	4-Door	2-Door Coupe	4-Door Sedan			2-Seat	3-Seat	3-Speed Manual	4-Speed *Manual	5-Speed Manual	Turbo Hydra- matic		
STARFIRE						\$3,882						—	X	\$244	\$244
STARFIRE SX						4,062									
OMEGA F-85							\$3,390							—	
OMEGA	\$3,514					3,627	3,485				X	—		262 <sup>2,18</sup>	262
OMEGA BROUGHAM	3,704					3,817	3,675							262 <sup>18</sup>	
CUTLASS S				\$3,999	\$4,033										
CUTLASS SUPREME				4,291	4,415						X			262 <sup>2,18</sup>	262
CUTLASS SUPREME BROUGHAM				4,580										—	
CUTLASS SALON				4,890	4,965									N/C <sup>18</sup>	
CUTLASS SUPREME CRUISER								\$4,923	Optional 3rd Seat: \$133			—			X
CUTLASS VISTA CRUISER								5,041							
DELTA 88	4,918	\$4,975	\$5,038												X
DELTA 88 ROYALE	5,078	5,146	5,217												
CUSTOM CRUISER								5,563 5,719 <sup>1</sup>	5,705 5,861 <sup>1</sup>						X
NINETY-EIGHT LUXURY		6,271	6,419												X
NINETY-EIGHT REGENCY		6,544	6,691												X
TORONADO CUSTOM		6,891													X
TORONADO BROUGHAM		7,137													X

(1) With Exterior Wood Grain Applique. (2) Available Only On 2-Door Models. (3) 155 hp Rating. (4) Available Only With Other Selected Equipment. (5) 215 hp, 455 cid Is Standard On Toronado. (6) Power Brakes Required When Other Selected Equipment Is Ordered. (7) Power Brakes Standard On Sedan. (8) Required With Air Conditioning On V8 Engine Options. (9) Optional Outside Remote Control Rearview Mirror Also Required. (10) 2-Door Models: \$162. (11) Power Steering Required. (12) Not Available With 5-Speed Or 3-Speed Column Shift Manual Transmission. (13) Turbo Hydra-matic Transmission Required. (14) Not Available With Air Cushion Restraint System. (15) Power Brakes Required. (16) Not Available With L6 Standard Engine. Turbo Hydra-matic Required. (17) Not Available With 5-Speed Manual Transmission. (18) Available Only With 260 V8 Engine.

SEE YOUR OLDSMOBILE DEALER FOR MORE DETAILED INFORMATION

## SOME MAJOR OPTIONS, AND MANUFACTURER'S SUGGESTED RETAIL PRICES

V6 231 cid* 2 bbl** 105 hp†	L6 250 cid 1 bbl 105 hp	V8 260 cid 2 bbl 110 hp	V8 350 cid 4 bbl▲ 170 hp	V8 455 cid 4 bbl 190 hp	Air Conditioning		Power Brakes (With Front Discs)	6-Way Power Bench Seat(a)	Power Steering	Power Windows	Radios (b)			Vinyl Roof Covering (c)	Tilt Steering Wheel	Cruise Control
					Manual Control	Semi-Auto. Control					AM	AM-FM	AM-FM Stereo			
X	—	—	—	—	\$424	—	\$55	—	\$120	—	\$71	\$134	\$219	—	\$48 <sup>11</sup>	—
—	X	\$90	\$195 <sup>3,4</sup>	—	452	—	58 <sup>6</sup>	—	136 <sup>8</sup>	2-Door: \$99 4-Door: \$140	75	137	233	\$ 91	52 <sup>12</sup>	\$73 <sup>16</sup>
—	X	90	195 <sup>4</sup>	\$321 <sup>4</sup>	476	\$513	58 <sup>6</sup>	—	X	2-Door: \$99 4-Door: \$140	79	142	233	109	52 <sup>13</sup>	73 <sup>15,16</sup>
		58 <sup>6,7</sup>	\$124	73 <sup>15,16</sup>												
	X	112	238 <sup>4</sup>	—			—	73 <sup>17</sup>								
—	—	—	X	126 <sup>4</sup>	—	—	X	—	124	140	—	—	—	52	73	
—	—	—	X	147	512	549	X	126	X	159	92	153	236	136	53 <sup>14</sup>	79
—	—	—	—	X	512	549	X	126	X	159 <sup>9</sup>	92	153	236	—	53	79
—	—	—	—	X	512	549	X	98	X	X	92	153	236	150 <sup>10</sup>	53 <sup>14</sup>	79
—	—	—	—	X <sup>5</sup>	512	549	X	126	X	X	92	153	236	150	53 <sup>14</sup>	79
								—								

**X (Standard).** —(Not Available). \*cid (Cubic Inch Displacement). \*\*2 bbl (2 Barrel Carburetor). †Horsepower Ratings Are S.A.E. Net And Represent The Power Output Of Engines Installed In The Automobiles. N/C Available In Place of Turbo Hydra-matic At No Extra Charge. (a) 2-Way Power Seat Control Standard On Ninety-Eight Models. Power Operated 6-Way 60/40 Bench Seat And Bucket Seat Also Available On Certain Models At Additional Cost. (b) AM Radio and AM-FM Stereo Radio With 8-Track Tape Player Also Available At Additional Cost On Most Models. (c) Vinyl Landau Roof Covering Available On Certain Models At Additional Cost. ▲2 bbl, 350 cid V8 Also Available On Omega F-85, Omega, And Omega Brougham Models At Additional Cost of \$140.

AND PRICES OF OTHER AVAILABLE OPTIONS ON THESE MODELS.

## BODY STYLES, STANDARD AND OPTIONAL ENGINES AND TRANSMISSIONS, SOME

Buick	Sedan 4-Door	Hardtop		Colonnade Hardtop		Hatch- back Coupe 2-Door	Coupe 2-Door	Station Wagon		Transmissions			V6 231 cid* 2 bbl** 105 hp	
		2-Door	4-Door	2-Door Coupe	4-Door Sedan			2-Seat	3-Seat	3-Speed Manual	4-Speed Manual	Turbo Hydra- matic		
SKYHAWK S						\$3,903								
SKYHAWK						4,216					—	X <sup>2</sup>	\$244	X
SKYLARK S							\$3,435				X		262 <sup>3</sup>	
SKYLARK	\$3,609					3,687	3,549					—		X
SKYLARK S/R	4,324					4,398	4,281				—		X	
CENTURY SPECIAL				\$3,935										
CENTURY				4,070	\$4,105						X		262 <sup>3</sup>	X
CENTURY CUSTOM				4,346	4,424							—		
CENTURY CUSTOM WAGON								\$4,987	\$5,099		—		X	—
REGAL				4,465							X		262 <sup>3</sup>	X
					4,825						—		X	—
LE SABRE	4,747	\$4,815	\$4,871								—	—	X	X
LE SABRE CUSTOM	5,046	5,114	5,166								—	—	X	—
ESTATE WAGON								5,591	5,731		—	—	X	—
ELECTRA 225		6,367	6,527								—	—	X	—
ELECTRA LIMITED		6,689	6,852 <sup>1</sup>								—	—	X	—
RIVIERA		6,798									—	—	X	—

(1) Electra Limited 4-Door Hardtop Park Avenue Trim Options: \$419 And \$525. (2) 5-Speed Overdrive Manual Transmission Available: \$244. (3) Turbo Hydra-matic Required When Optional V8 Engines Are Ordered. (4) Semi-Automatic Control System. (5) Automatic Control System. (6) Power Brakes Standard On 4-Door Century Custom. (7) Power Brakes Required When Other Selected Equipment Is Ordered. (8) Power Steering Required. (9) Turbo Hydra-matic Transmission Required. (10) Power Brakes Required. (11) Not Available With Air Cushion Restraint System. (12) Credited when 350 cid, 4 bbl V8 Engine Is Ordered In Place Of Standard Engine.

SEE YOUR BUICK DEALER FOR MORE DETAILED INFORMATION

**MAJOR OPTIONS, AND MANUFACTURER'S SUGGESTED RETAIL PRICES**

V8 260 cid 2 bbl 110 hp	V8-350 cid		V8 455 cid 4 bbl 205 hp	Air Conditioning		Power Brakes (With Front Discs)	6-Way Power Bench Seat(a)	Power Steering	Power Windows	Radios (b)			Vinyl Roof Cover- ing (c)	Tilt Steering Wheel	Cruise Control
	2 bbl 140 hp	4 bbl 155 hp		Manual Control	Auto. Control					AM	AM-FM	AM-FM Stereo			
—	—	—	—	\$424	—	\$55	—	\$120	—	\$71	\$134	\$219	—	\$48 <sup>8</sup>	—
\$35	\$85	\$140	—	452 <sup>10</sup>	—	58 <sup>7</sup>	—	136	2-Door: \$99 4-Door: \$140	75	137	233	\$96	52 <sup>9</sup>	\$73 <sup>9</sup>
													91	52	73
—	—	—	—	476 <sup>10</sup>	\$513 <sup>4,10</sup>	58 <sup>6,7</sup>	\$124	X	2-Door: \$99 4-Door: \$140	79	142	233	2-Door: \$106 4-Door: \$111	52 <sup>9</sup>	73 <sup>9,10</sup>
	85	140				X							—	52	73
—	85	140	—	476	513 <sup>4</sup>	X	124	X	99	79	142	233	106	52 <sup>9</sup>	73 <sup>9</sup>
	X	55							140				52	73	
—	—	—	—	512	549 <sup>4</sup>	X	126	X	159	92	153	236	139	53	79
		X	\$159										53 <sup>11</sup>		
—	—	—	X	512	549 <sup>4</sup>	X	126	X	159	92	153	236	150	53	79
—	—	(159) <sup>12</sup>	X	512	594 <sup>5</sup>	X	126	X	X	92	153	236	2-Door: \$163 4-Door: \$150	53 <sup>11</sup>	79
							—								
—	—	—	X	512	594 <sup>5</sup>	X	126	X	X	92	153	236	139	X <sup>11</sup>	79

**X (Standard). — (Not Available).** \*cid (Cubic Inch Displacement). \*\*2 bbl (2 Barrel Carburetor). †Horsepower (hp) Ratings Are S.A.E. Net And Represent The Power Output Of The Engines Installed In The Automobiles. (a) Power Operated 6-Way 60/40 Bench Seats And Bucket Seats Also Available On Certain Models At Additional Cost. (b) AM Radio And AM-FM Stereo Radio With 8-Track Tape Player Also Available At Additional Cost On Most Models. (c) Vinyl Landau Roof Covering Also Available On Certain Coupe Models At Additional Cost.

**AND PRICES OF OTHER AVAILABLE OPTIONS ON THESE MODELS.**

**BODY STYLES, STANDARD EQUIPMENT, SOME MAJOR OPTIONS, AND MANUFACTURER'S SUGGESTED RETAIL PRICE**

Cadillac	Sedan 4-Door	Hardtop		Leather Upholstery	Cruise Control	Fuel Monitor	Astro- roof (a)	Illumina- ted Entry System	6-Way Power Bench Seat (b)	Theft Deterrent System	Tilt & Telescope Steering Wheel	Vinyl Padded Roof
		2-Door	4-Door									
CALAIS		\$ 8,629	\$8,825	—					\$131			\$163
DE VILLE		9,067	9,265	\$220					X			163
ELDORADO*		10,586		235 <sup>1</sup>	\$104	\$26	\$885	\$52	X	\$114	\$102 <sup>6</sup>	170
FLEETWOOD BROUGHAM	\$10,935			235					X <sup>3</sup>			X
FLEETWOOD**	14,889			— <sup>2</sup>			— <sup>2</sup>		98 <sup>4</sup>			819
SEVILLE	12,479			235		X	885		X <sup>5</sup>		X	X

\*Eldorado also available in a convertible model: \$11,049.

\*\*Fleetwood Limousine model: \$15,239.

(1) Standard On Eldorado Convertible. (2) Available On Special Order Only. (3) 60/40 "Dual Comfort" 6-Way Power Seat On Driver's Side Standard On Fleetwood Brougham. (4) Not Available on Limousine.

X (Standard). — (Not Available). (a) When Ordered With Full Vinyl Padded Roof. (b) Power Operated 6-Way 60/40 And 50/50 "Dual Comfort" Seats Also Available At Additional Cost. (5) 50/50 "Dual Comfort" 6-Way Power Seat On Driver's Side Standard on Seville. (6) Not Available With Air Cushion Restraint System.

**STANDARD ON ALL CADILLAC MODELS:** 500 Cubic Inch, 4 Barrel V8 Engine (Standard on Seville—350 Cubic Inch Electronic Fuel-Injected V8 Engine); Turbo Hydra-matic Transmission; Automatically Controlled Air Conditioning; Power Steering; Power Brakes (With Front Discs On All Models Except Eldorado, Which Also Has Rear Discs); Power Windows; Power Door Locks; Laminate Monitors; Tinted Glass (All Windows); Wheel Trim Covers; Whitewall Steel-Belted Radial Ply Tires; Left Side Remote Control Mirror; AM-FM Radio On Calais, De Ville, Fleetwood Models; AM-FM Stereo Radio On Eldorado, Fleetwood Brougham, And Seville Models; AM-FM Stereo Radio With 8-Track Tape Player Also Available On All Models At Additional Cost.

**SEE YOUR CADILLAC DEALER FOR MORE DETAILED INFORMATION AND PRICES OF OTHER AVAILABLE OPTIONS ON THESE MODELS.**

### General Motors Optional Air Cushion Restraint System

GM's Air Cushion Restraint System is available at an additional cost of \$315 on the following models: Cadillac—Calais, De Ville, Eldorado Coupe, and Fleetwood Brougham; Oldsmobile—Delta 88, Delta 88 Royale, Ninety-Eight Luxury and Regency, and Toronado; and

Buick—Le Sabre Custom, Electra 225 and Limited. The Restraint System is also available on the Buick Riviera at a cost of \$262. When the system is ordered, the shoulder belts are eliminated from the standard front seat lap and shoulder belt system.



If "the name of the game" in 1976 is fuel economy, GM's 1976 cars can offer you the gas mileage you want in the kind of car you like to drive. Based on Environmental Protection Agency figures, our 1976 cars show an average sales-weighted fuel economy increase of 38% over 1974 models. Listed

below are fuel economy statistics for some selected 1976 GM cars taken from the EPA's 1976 Gas Mileage Guide for New Car Buyers\*. If you would like to have a copy of this guide, write: General Motors Corporation, Room 1-101, 3044 West Grand Boulevard, Detroit, Michigan 48202.

MODEL	ENGINE	TRANSMISSION	EPA DRIVING TEST	
			City	Highway
Chevrolet Chevette	1-bbl. 98 Four	Manual	30	39
Chevrolet Vega	2-bbl. 140 Four	Manual	22	35
Pontiac Sunbird	2-bbl. 140 Four	Manual	22	35
Chevrolet Chevette	1-bbl. 85 Four	Auto.	24	31
Oldsmobile Starfire	2-bbl. 231 V-6	Manual	18	30
Pontiac Astre	2-bbl. 140 Four	Auto.	20	28
Buick Skylark	2-bbl. 231 V-6	Auto.	17	25
Chevrolet Chevelle	1-bbl. 250 Six	Manual	17	25
Oldsmobile Cutlass	1-bbl. 250 Six	Manual	17	25

MODEL	ENGINE	TRANSMISSION	EPA DRIVING TEST	
			City	Highway
Buick Century	2-bbl. 231 V-6	Auto.	17	25
Oldsmobile Omega	1-bbl. 250 Six	Auto.	18	23
Cadillac Seville	Fuel Injection 350 V-8	Auto.	15	21
Pontiac Grand Prix	4-bbl. 400 V-8	Auto.	15	20
Chevrolet Monte Carlo	2-bbl. 350 V-8	Auto.	14	18
Chevrolet Caprice	4-bbl. 400 V-8	Auto.	13	18
Buick Electra	4-bbl. 455 V-8	Auto.	12	18
Cadillac Eldorado	4-bbl. 500 V-8	Auto.	12	16
Cadillac Sedan DeVille	4-bbl. 500 V-8	Auto.	12	16

(Consult EPA California Gas Mileage Guide for all California Emission-Equipped cars).

\*The fuel economy figures shown are averages based on the projected sales for the cars listed in the EPA Guide having different equipment options which may affect overall fuel economy.

These figures may not necessarily correspond with some GM ads in which mileage figures might be shown for a single car with a specific engine-transmission-axle ratio combination.

### Factors Influencing Fuel Economy

The 1976 gasoline mileage figures listed above are estimates. The actual mileage you get will vary depending on the type of driving you do, your driving habits, your car's condition and equipment. For example, the *weight* of the vehicle is the single most important

factor which affects fuel economy. The smaller the vehicle, generally the better the fuel economy. Such *optional equipment* as automatic transmission and air conditioning, not only require more gasoline for their operation but also add weight. Selection of economy axle ratios, optional on some models, can increase fuel economy in highway driv-

ing. *Your driving habits* affect fuel economy. Frequent starts and stops, long idling periods, short trips, and uneven speed decrease fuel economy. *Condition of the engine* affects fuel economy. Keeping your engine tuned will help you to get the best fuel economy and performance. Maintaining the recommended tire pressures will also benefit fuel economy.



# GM '76 Station Wagons

*General Motors offers a complete line of small, mid, and regular-size station wagons that provide a blend of wagon practicality with comfort and tasteful styling.*

ASTRE SAFARI Wagon



**Pontiac**  
**Astre Safari Wagon** For economy plus flair and sportiness, there are the 2-door, 2-seat small-size Pontiac Astre Safari and Chevrolet Vega and Vega Estate wagons powered by a standard 4-cylinder engine guaranteed for 5 years or 60,000 miles (details on page 2) and 3-speed manual transmission. Woodgrain vinyl exterior paneling is standard on the Vega Estate wagon and optional on the Astre wagon. The 97-inch wheelbase Astre and Vega wagons are great for small families who like the idea of a small-size economy car, but want a little more room and versatility that a wagon can provide.

Mid-size wagons, on a 116-inch wheelbase, are offered by Chevrolet (the Chevelle Malibu, Malibu Classic, and Malibu Classic Estate), Pontiac (LeMans and Grand LeMans Safaris), Buick (Century Custom), and Oldsmobile (Cutlass Supreme Cruiser and the Vista-Cruiser). The mid-size wagons can be ordered with two or three seats. All models have many standard and optional features that add to the usefulness of a wagon and increase driver comfort and convenience.

Oldsmobile  
**Vista-Cruiser**



VISTA-CRUISER

CAPRICE ESTATE Wagon



V8 is standard on the Pontiac, Buick, and Oldsmobile wagons. All regular-size wagons have, as standard equipment, Turbo Hydra-matic transmission, power steering, power brakes (with front discs), steel-belted radial ply tires, power-operated tailgate window, and manually-operated Glide-Away disappearing tailgate.

**Buick**  
**Estate Wagon**

**Chevrolet**  
**Caprice Estate** For regular-size wagons, you can choose from the Chevrolet Impala and Caprice Estate 2- and 3-seat wagons, the Pontiac Catalina Safari and Grand Safari wagons (with an optional third seat), or Oldsmobile's Custom Cruiser or Buick's Estate Wagon, both in 2- or 3-seat models. The standard engine for the Chevrolet Impala and Caprice Estate wagons is a 400 cubic-inch V8, while a 455 cubic-inch



ESTATE Wagon

# GM '76 Recreational Vehicles



GMC PALM BEACH MOTORHOME



Eleganza II Motor Home Interior

*GM's Chevrolet and GMC recreational vehicles offer something for just about every budget and for every idea of family travel, outdoor fun and practical, personalized transportation.*

**GMC**  
**Motor Home** The front-wheel drive GMC MotorHome combines distinctive exterior styling and a low-frame chassis with luxurious appointments. The MotorHome is offered in three 26-foot models—the Eleganza II, Glenbrook, and the Palm Beach—and four different floor plans which provide sleeping accommodations for up to six adults.

## Crew Cab Pickup

A Crew Cab pickup truck, offered by both Chevrolet and GMC, is readily adaptable to pulling a travel trailer or handling a slide-on, cab-over camper while providing comfortable 6-passenger seating. Special trailering or camper packages are available as options, as are dual rear wheels.



CHEVROLET CREW CAB Pickup

**Vans** Chevrolet and GMC offer vans in a variety of sizes, styles, and seating and cargo capacities. Chevrolet's Sportvan and GMC's Rally lend themselves to a wide range of recreational applications and can be ordered in either 110-inch or 125-inch wheelbase models with seating capacity for up to 12 persons. They're great vehicles for car pools, too! Chevrolet's Cutaway Vans and GMC's Rally Camper Specials, offered in 125-inch and 146-inch wheelbases, provide a reasonably-priced foundation for a mini motor home.



CHEVROLET SUBURBAN



CHEVROLET BEAUVILLE SPORTVAN

**Suburban** Chevrolet and GMC Suburbans combine practical design with style and provide more than a station wagon—more room, more towing power, more strength. Suburbans can be ordered with seating for three, six, or nine. With the rear seat removed, and the second seat folded, there's room for up to 144 cubic feet of cargo. The Suburban is an ideal trailer-towing vehicle and can be equipped to handle a combined weight of Suburban, trailer, passengers, and equipment of up to 14,500 pounds.

# GM '76 Recreational Vehicles

## GMC Chevrolet Jimmy / Blazer

GMC's Jimmy and Chevrolet's Blazer are the 106.5-inch wheelbase versatile vehicles for on- and off-road performance, especially when the full-time 4-wheel drive models are ordered. These rugged hardtop vehicles can be ordered with optional trailer-towing equipment.



GMC WIDE-SIDE Pickup



GMC JIMMY

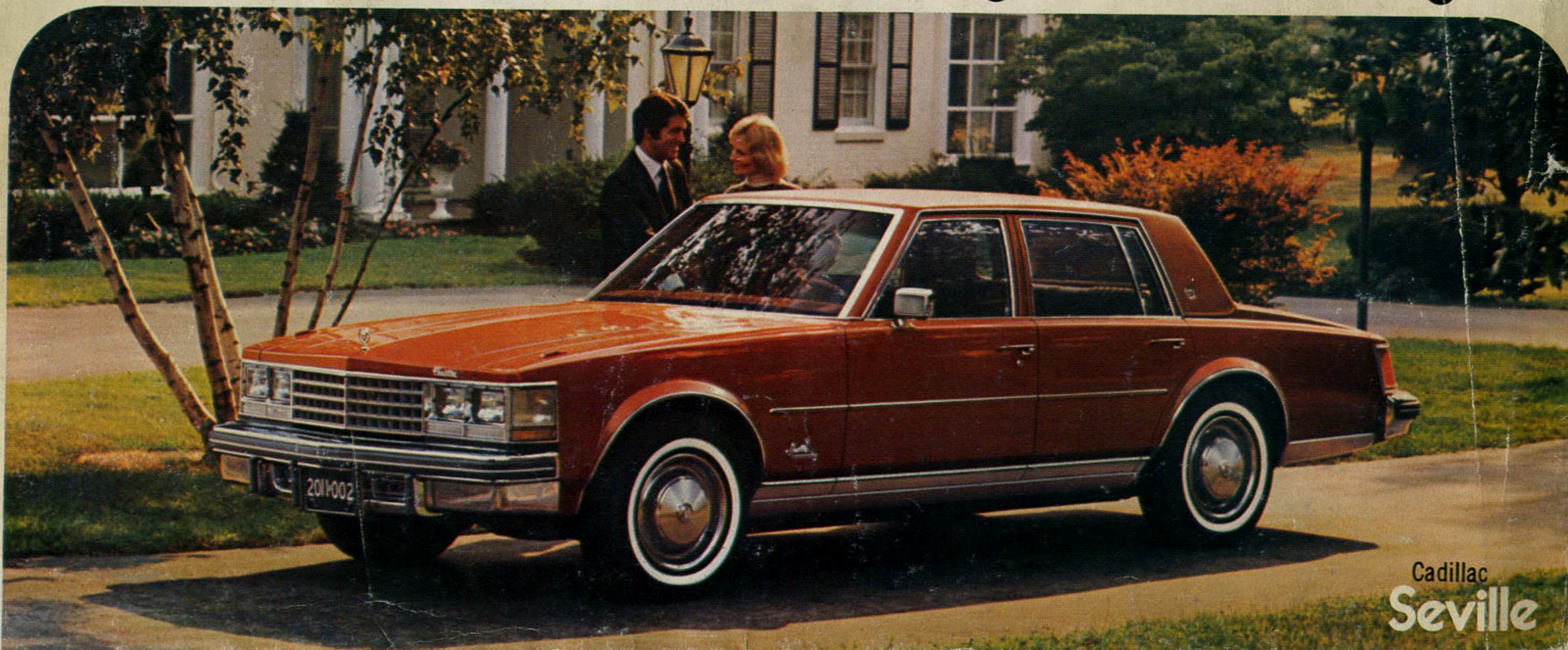
**Pickups** Light-duty pickup trucks from GMC and Chevrolet—as plain or as fancy as you like—provide a solid foundation for shell or slide-on campers and can be equipped with such camper options as heavy-duty rear stabilizer bar and camper tiedowns. Full-time 4-wheel drive models are available with either 6-cylinder or V8 engine power and Turbo Hydra-matic transmission.

Other GM recreational vehicles include the Chevrolet El Camino and GMC Sprint.

General Motors Corporation  
Detroit, Michigan 48202

BULK RATE  
U. S. POSTAGE  
PAID  
VOID  
Detroit, Michigan  
Permit No. 48202

General Motors... Good Motoring... Great Mileage



Cadillac  
Seville