

# CARS & TRUCKS



WHO  
COULD ASK **TOYOTA**  
FOR ANYTHING  
MORE!



# SUPRA: THE DYNASTY BEGINS

*The all-new Toyota Supra. Performance without compromise in a world-class driving machine. A 3.0 liter twin cam 24-valve EFI engine produces 200 horse-*

*power at 6000 rpm. Race-inspired 4-wheel double wishbone suspension and Goodyear VR Gatorback radial tires give Supra road-hugging performance.*

*Supra's interior literally wraps around you, with an 8-way adjustable driver's Sport Seat and memory tilt/telescopic steering wheel.*

*Surround yourself in concert-quality sound with an electronic AM stereo/FM/MPX tuner with full logic cassette deck and 5-way acoustic*

*flavor/tone equalizer. Choose an optional Sport Roof for open-air driving excitement.*

*Toyota's 1986 Supra: all the sports car, all the race-bred*

*excitement a true performance driver needs for total performance.*

*Shown with optional equipment. See your Toyota dealer for details.*



SUPRA

**PERFORMING ART!**  
Supra runs proud with aerodynamic styling and a drag coefficient of .33. A performance-minded 3.0 liter twin cam 24-valve EFI engine puts the power to the road.



3.0 LITER TWIN CAM  
24-VALVE EFI ENGINE



4 VALVES PER CYLINDER



SUPRA



SUPRA LEATHER SPORT SEAT INTERIOR



ELECTRONIC AM STEREO/  
FM/MPX TUNER, CASSETTE,  
ACOUSTIC TONE EQUALIZER

## DRIVER'S ENVIRONMENT.

Inside, complete instrumentation, ergonomically-designed Sport Seats and an electronic AM stereo/FM/MPX tuner with full logic cassette deck, flavor/tone control equalizer and four speakers mean sophisticated luxury.



# CELICA

Finally, a front-wheel drive sports car that truly handles like a sports car: presenting the all-new Toyota Celica GT-S.

Toyota's 2.0 liter twin cam

16-valve electronically fuel-injected engine powers the front-wheel drive Celica GT-S. Inside, a sporty interior awaits you with optional leather Sport Seats or soft

cloth upholstered seats. Check out the optional electronic AM stereo/FM/MPX tuner with full logic cassette deck and 5-way acoustic flavor/tone equalizer.

The Celica GT Liftbacks, or Sport Coupes, and ST Sport Coupes give you more in an affordable sporty car: sleek style, front-wheel drive and fuel-efficiency.\*

Designed to provide maximum comfort, the GT and ST interiors have stylish cloth-covered fully reclining front bucket seats. More performance, more style,

more comfort: that's the new Celica for 1986.

\*See EPA mileage statement on inside back cover.

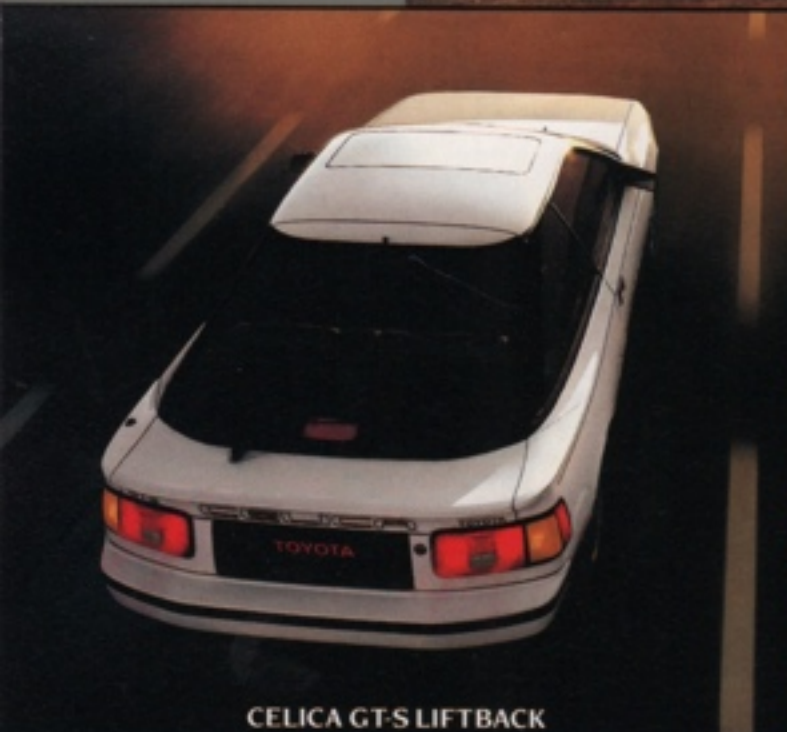
Shown with optional equipment. See your Toyota dealer for details.



CELICA GT-S LIFTBACK



CELICA GT LIFTBACK



CELICA GT-S LIFTBACK



CELICA GT-S LEATHER SPORT SEATS



CELICA GT-S SPORT COUPE



CELICA GT INTERIOR

## COMFORTABLE INTERIOR

Celica GT Liftback and GT Sport Coupe feature cloth-covered reclining front bucket seats with six-way adjustable driver's seat, including lumbar and seat cushion tilt for the driver.

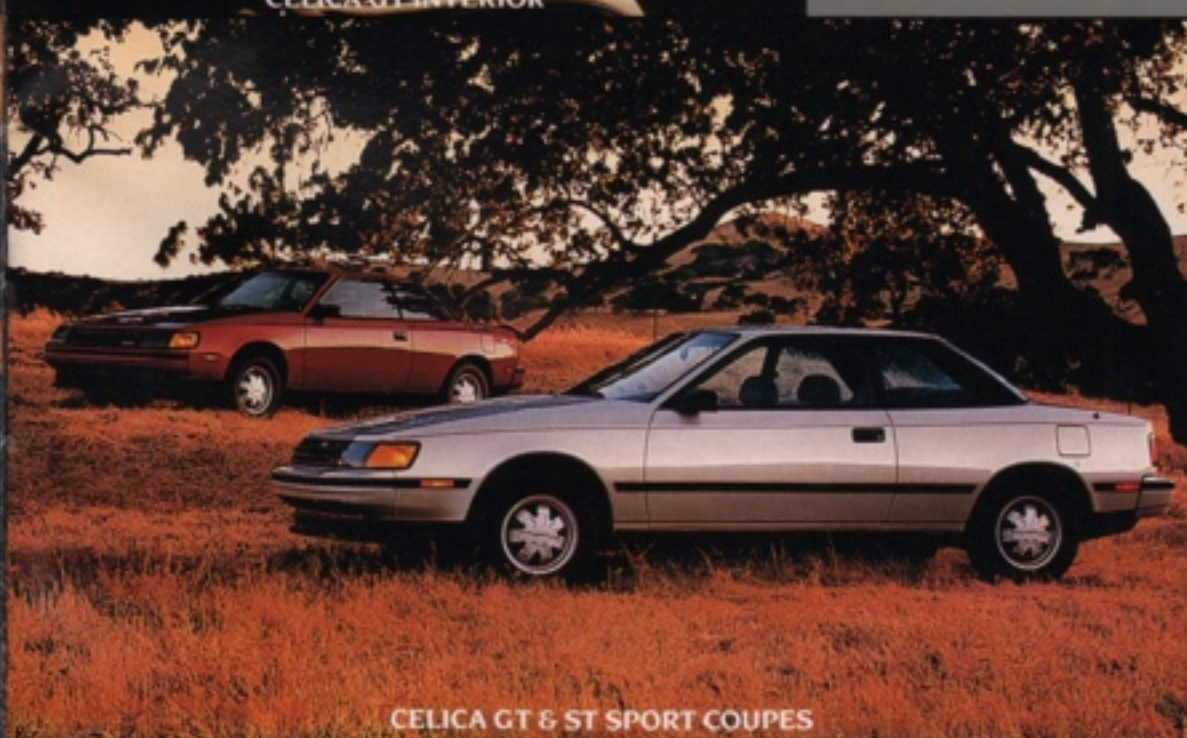
**SPORTY PERFORMANCE**  
Both the Celica GT-S Liftback and Sport Coupe have the 2.0 liter twin cam 16-valve EFI engine which produces 135 hp at 6,000 rpm to give the GT-S muscle to spare.



2.0 LITER  
TWIN CAM 16-VALVE  
EFI ENGINE



ELECTRONIC AM STEREO/  
FM/MPX TUNER, CASSETTE,  
ACOUSTIC TONE EQUALIZER



CELICA GT & ST SPORT COUPES



# MR2

The 1986 Toyota MR2. A well-balanced mid-engine 2-seater sports car that's fun to drive.

The twin cam 16-valve electronically fuel-injected

engine and 4-wheel independent suspension give you pure sports car handling.

Inside, there's a 7-way adjustable driver's Sport Seat with a glove-soft Leather

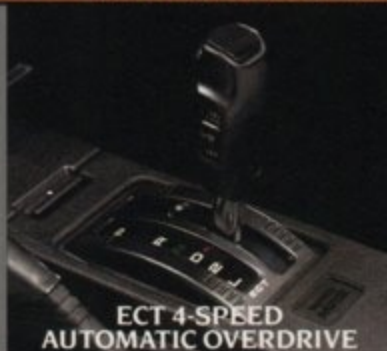
Interior Package available.

The Toyota MR2: Motor Trend's 1985 Import Car of the Year. One drive and you'll know why!

Shown with optional equipment. See your Toyota dealer for details.



MR2 WITH AERODYNAMIC SPOILER PACKAGE



ECT 4-SPEED  
AUTOMATIC OVERDRIVE



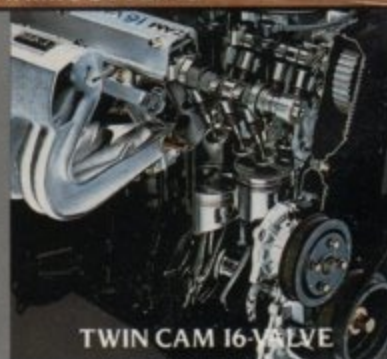
LEATHER SPORT SEATS

**ROOMY INTERIOR**  
Inside MR2, you'll find more leg room and head room than in most 2-seater sports cars. A 7-way adjustable driver's Sport Seat adds additional comfort. And for 1986, there's an optional 4-speed automatic overdrive transmission available.



MR2 AERODYNAMIC STYLING

**SOPHISTICATED**  
Toyota's 1.6 liter twin cam 16-valve EFI engine propels the MR2 from 0-60 in eight seconds.



TWIN CAM 16-VALVE

# COROLLA GT-S

With the only twin cam engine in its class, the Corolla GT-S will thrill you with high-revving 16-valve performance.

The new Corolla GT-S

Sport Liftbacks and Sport Coupes have aggressive aerodynamic styling and refined suspension to give you a unique combination

of sporty-car excitement, balanced handling, and affordability.

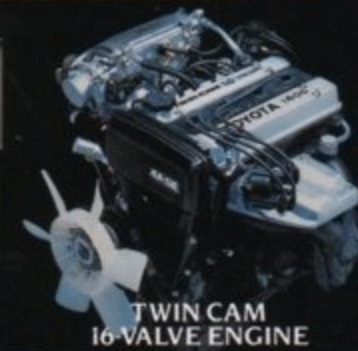
Shown with optional equipment. See your Toyota dealer for details.



COROLLA GT-S SPORT LIFTBACK



COROLLA GT-S INSTRUMENT PANEL



TWIN CAM  
16-VALVE ENGINE

**HOT PERFORMANCE**  
Corolla GT-S Sport puts a twin cam 16-valve EFI engine at your command, with a high-performance interior to match.



COROLLA GT-S SPORT SEATS



COROLLA SR5 SPORT COUPE

**VALUE-PACKED COUPES**  
An AM/FM/MPX receiver with four speakers, cut-pile carpeting, remote inside trunk/fuel door releases, and digital clock are just a few examples of the value found in the Corolla SR5 Sport Liftback and Sport Coupes.



# CAMRY

The 1986 front-wheel drive Toyota Camry is stylish, comfortable, fuel-efficient,\* and Toyota's roomiest sedan.

A 2.0 liter SOHC EFI engine delivers more power

than ever before. Front-wheel drive traction keeps you in touch with the road.

Whether a Sedan or Liftback, Deluxe or LE, Camrys

are always exceptional values.

\*See EPA mileage statement on inside back cover.

Shown with optional equipment. See your Toyota dealer for details.



CAMRY LE SEDAN

## ROOM FOR ALL

Designed for maximum room and comfort, Camry provides comfortable, deep-cushioned seating for five adults plus convenient storage and cargo space.



CAMRY LE SEDAN INTERIOR



CAMRY DELUXE SEDAN AND LE LIFTBACK

## ADVANCED TECHNOLOGY

Camrys provide a comfortable ride with 4-wheel independent suspension, rack-and-pinion steering, and gas-filled rear shocks.

# CRESSIDA

The 1986 Cressidas are elegant performers with a 2.8 liter 6-cylinder twin cam electronically fuel-injected engine and electronically controlled 4-speed auto-

matic overdrive transmission.

Inside, Cressida envelops you in optional glove-soft leather, or deeply cushioned, richly upholstered cloth.

Toyota Cressida. Every bit

the grand touring luxury automobile.

\*Technics is a trademark of the Matsushita Electric Industrial Co., Ltd. Shown with optional equipment. See your Toyota dealer for details.



CRESSIDA LUXURY SEDAN



LEATHER INTERIOR



2.8 LITER  
TWIN CAM ENGINE

## HIGH STANDARDS

Standard features include: Technics\* sound system, cruise control, speed sensing power steering, windows and door locks.

## SPACIOUS LUXURY

The Cressida Luxury Wagon stands out as a unique combination of versatility, performance and luxury. There's a spacious 70.2 cubic feet of carpeted cargo area at your disposal.



CRESSIDA LUXURY WAGON



# COROLLA

Corolla is one of the world's most popular cars, with a high resale value to match.

The front-wheel drive Corolla 4-Door Sedans and

5-Door Deluxe Liftback offer economy and reliability. Corolla's 1.6 liter engine is both responsive and very fuel-efficient.\*

The 1986 Corollas. They've

got more of what it takes to answer today's driving needs.

\*See EPA mileage statement on inside back cover.

Shown with optional equipment. See your Toyota dealer for details.



COROLLA LE SEDAN

## CONVENIENT CHOICE

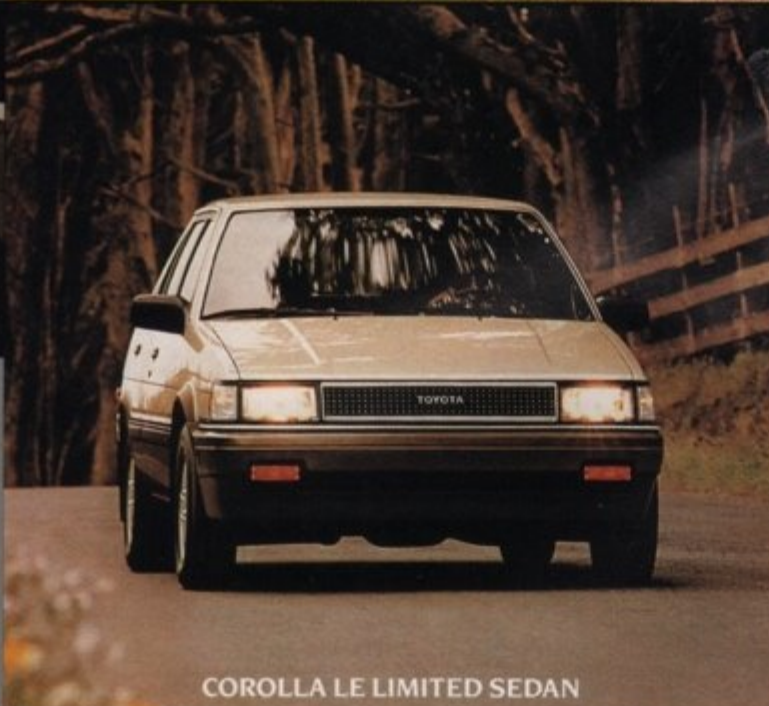
Front-wheel drive Corollas include the 4-Door LE Limited, LE, and Deluxe Sedans, and Deluxe Liftback. All feature traditional Toyota reliability in a roomy, value-packed package with loads of standard features.



COROLLA DELUXE SEDAN AND DELUXE LIFTBACK



COROLLA LE LIMITED SEDAN INTERIOR



COROLLA LE LIMITED SEDAN

# TERCEL

The 1986 Tercel is Toyota's lowest-priced car, delivering outstanding gas mileage,\* while offering the roomiest interior of any subcompact.\*\*

Tercel's 1.5 liter SOHC

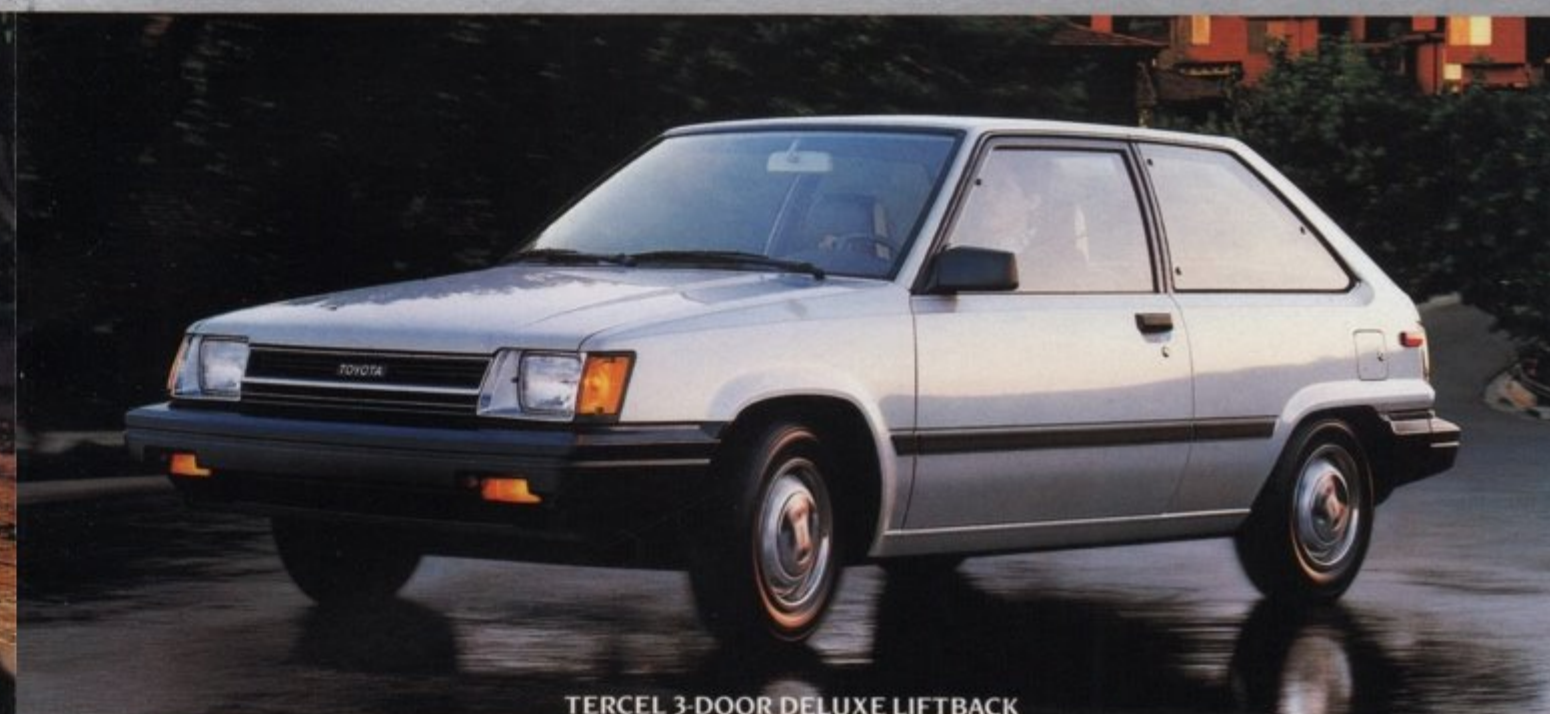
engine, front-wheel drive and wide stance offer you spirited performance.

Liftback or Wagon, Tercel's got it all: economy, reliability, and quality.

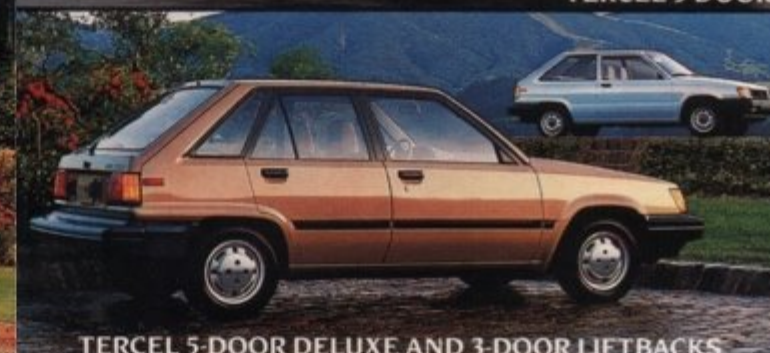
\*See EPA mileage statement on inside back cover.

\*\*Subcompact car class as defined by EPA.

Shown with optional equipment. See your Toyota dealer for details.



TERCEL 3-DOOR DELUXE LIFTBACK



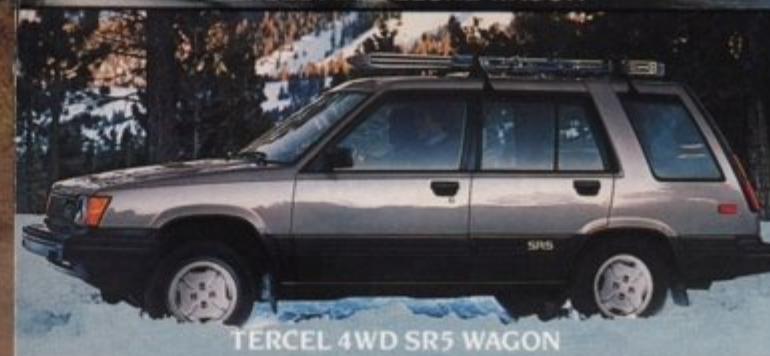
TERCEL 5-DOOR DELUXE AND 3-DOOR LIFTBACKS



TERCEL Fwd DELUXE WAGON



TERCEL Fwd DELUXE WAGON CLOTH INTERIOR



TERCEL 4WD SR5 WAGON

## ALL-WEATHER TRACTION

On-command 4-wheel drive keeps Tercel Wagons going through mud, snow and ice. Tercel 4WD Wagons have more passenger room and the highest MPG of any 4WD wagon.<sup>†</sup>

<sup>†</sup>Small station wagon class as defined by EPA.



# WONDERWAGONS

The 1986 Toyota Vans, LE or Deluxe, have all the driveability, ride and fuel economy\* of a passenger car plus the versatility and comfort of a station wagon.

A 2.2 liter EFI engine delivers more power for 1986 with better mileage than any full-size wagon. Exceptional handling, with a turning circle of

only 30.2 feet, adds to the Toyota Van's appeal.

\*See EPA mileage statement on inside back cover.  
Shown with optional equipment. See your Toyota dealer for details.



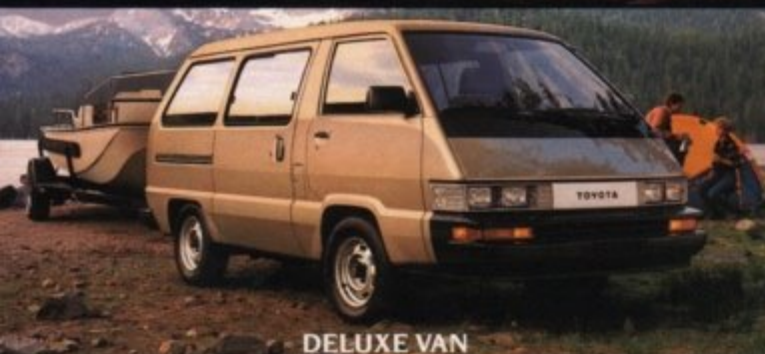
VAN LE



CAPTAIN'S CHAIR PACKAGE

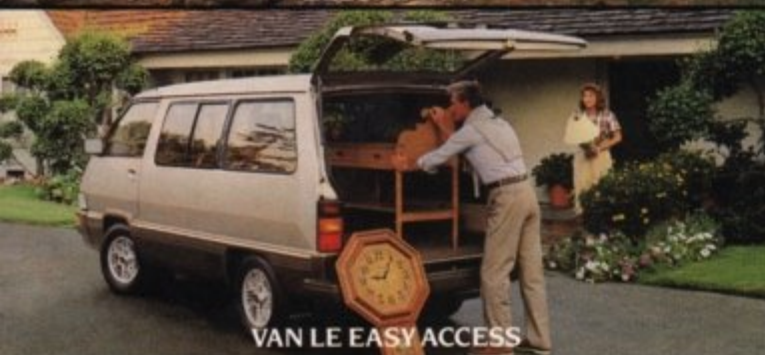


CARGO SPACE/BOTH REAR SEATS REMOVED

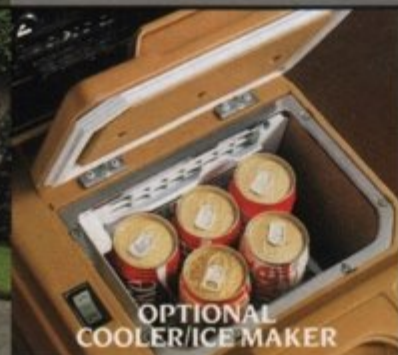


DELUXE VAN

**LUXURY INTERIOR**  
Equip your Van LE with optional Captain's Chair Package: reclining front chairs have dual armrests; middle-row Captain's Chairs swivel and recline. Or choose optional dual air conditioning with an available cooler/ice maker.



VAN LE EASY ACCESS



OPTIONAL COOLER/ICE MAKER

# CARGO VANS

The 1986 Toyota Cargo Vans combine compact size with over 187 cubic feet of standard cargo space.

Toyota now offers two Cargo Van models to suit your business needs: the

Window Van and the new Panel Van. Each boasts an 1845 lb. payload capacity\* and a powerful 2.2 liter electronically fuel-injected engine. Both can be con-

verted for recreational or business needs.

\*Including occupants, equipment and cargo, with 5-speed manual overdrive transmission.

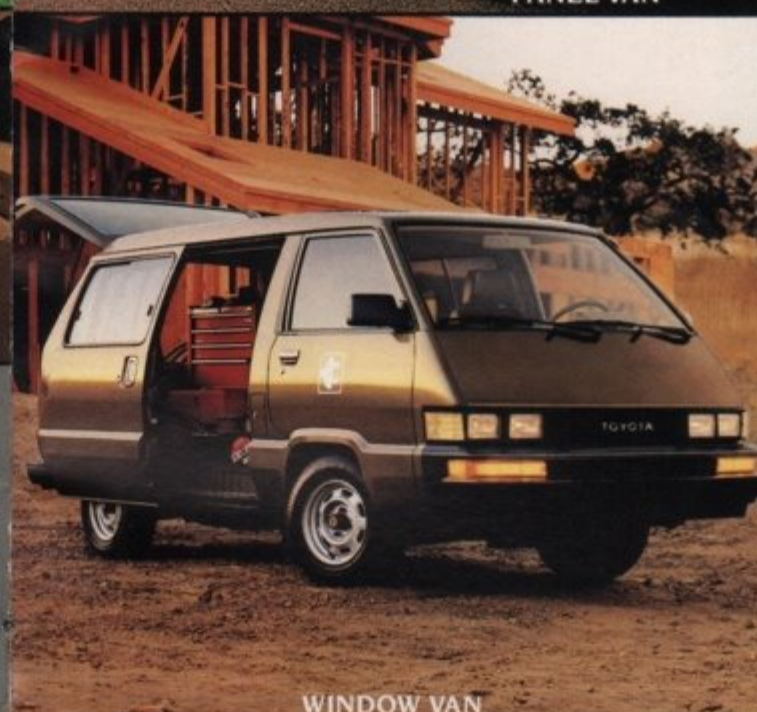
Shown with optional equipment. See your Toyota dealer for details.



PANEL VAN

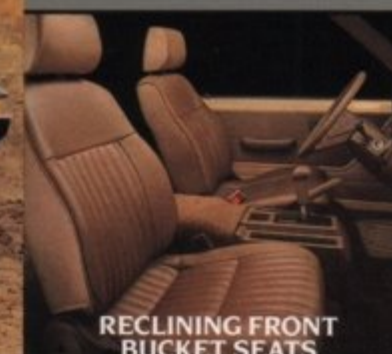


EASY LOADING/  
LARGE CAPACITY



WINDOW VAN

**COMFORT AND CONVENIENCE**  
Toyota's easy-loading Cargo Van has a flat floor, a wide-sliding side door, a high-opening rear hatch, and a comfortable driver's bucket seat and optional passenger's seat.



RECLINING FRONT  
BUCKET SEATS



**#1 CARGO CAPACITY**  
With 155.3 cu. ft. of space, the Toyota Cargo Van has the largest capacity of any small cargo van with the optional passenger seat. The standard Toyota Cargo Van has 187.2 cubic ft. of cargo space.



# 4x4 TRUCKS

*Tough. Powerful. Comfortable. The off-road-ready Toyota 4x4s offer you more.*

With 135 hp, the 4x4 Gas-Turbo SR5 Xtracab Sport or

Standard Bed Gas-Turbo, has one of the most powerful standard engines in its class. A Hi-Trac independent front suspension system

smoothes the way, off-road or on.

Want even more in your 4x4? Enjoy the electronically controlled four-speed auto-

matic overdrive transmission\* that takes the work out of off-road shifting.

Choose your 4x4: Standard Bed, Long Bed,

Xtracab, SR5 or Deluxe, or the legendary Land Cruiser Wagon. Toyota has sold more 4x4s than any other small truck maker.\*\*

\*Depending on model selected.  
\*\*Source: R.L. Polk 1979-June 1985 Registration Data.  
Shown with optional equipment. See your Toyota dealer for details.



4x4 GAS-TURBO SR5 XTRACAB SPORT



2.8 LITER  
GAS-TURBO ENGINE



4x4 TURBO SR5 XTRACAB SPORT SEATS



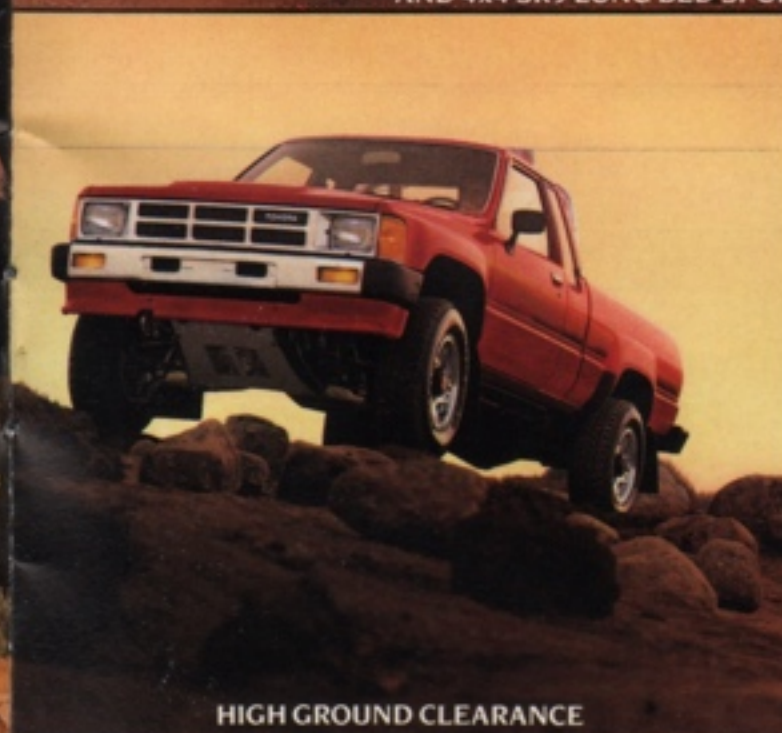
4x4 STANDARD BED TURBO



LAND CRUISER WAGON  
AND 4x4 SR5 LONG BED SPORT



ECT 4-SPEED  
AUTOMATIC OVERDRIVE



HIGH GROUND CLEARANCE



HI-TRAC INDEPENDENT FRONT SUSPENSION

## ONLY THE BEST

Toyota 4x4 Trucks have the Hi-Trac independent front suspension to smooth out the roughest road, while maintaining the high running ground clearance serious off-roading demands.

**FIRST. MOST.**  
Toyota gives you the first small 4x4s with gas-turbo engines. And Toyota's Xtracabs give you the most stretch-out leg room of any small truck.



# 4RUNNER

The Toyota 4Runner SR5, 4Runner Deluxe and 4Runner, with more interior space than any vehicles in their class, move from out-back trails to city streets with ease.

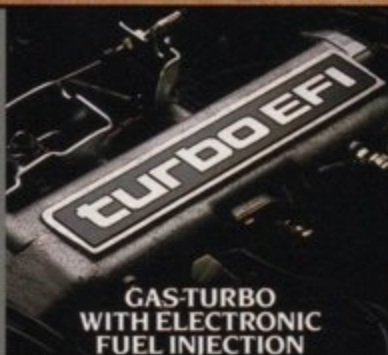
The 4Runner SR5 Turbo has a high-torque gas-turbo 24 liter EFI engine rated at 135 hp, one of the most powerful of any small sport/utility vehicle. Toyota's

Hi-Trac independent front suspension lets you use all that power to cover ground fast and easy.

Shown with optional equipment. See your Toyota dealer for details.



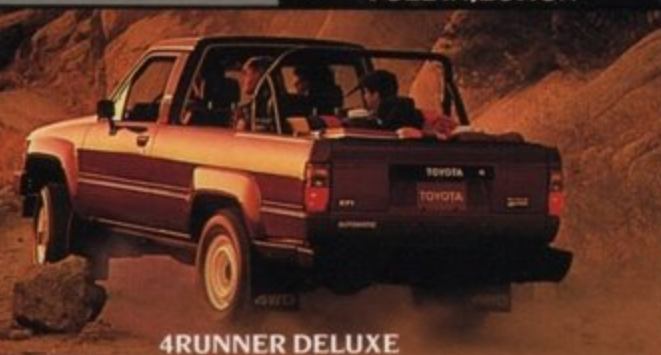
4RUNNER SR5 TURBO



GAS-TURBO WITH ELECTRONIC FUEL INJECTION



4RUNNER SR5 TURBO SPORT SEATS



4RUNNER DELUXE

**REAL SPORT**  
The SR5 and Deluxe models include a removable rear top, light bar, reclining front bucket seats and handy fold-down rear seats. All models, including the standard 4Runner, give you over 6½ ft. of cargo space.



4RUNNER

# SPORT TRUCKS

The Toyota 4x2 SR5 Xtracab Sport Truck, turbo or non-turbo, and the SR5 Long Bed give you more!

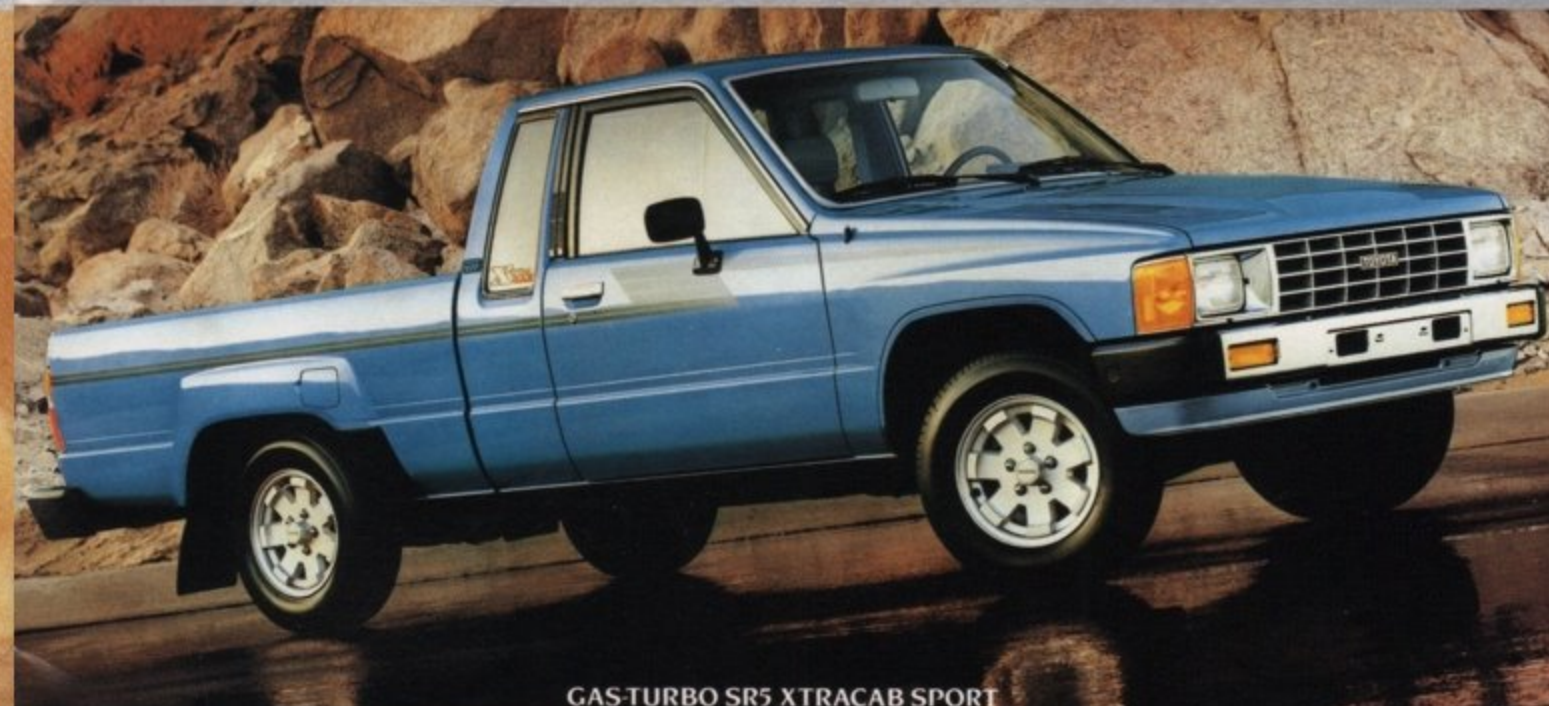
With 135 horsepower and lots of torque, the gas-turbo

24 liter SOHC electronically fuel-injected engines deliver outstanding performance.

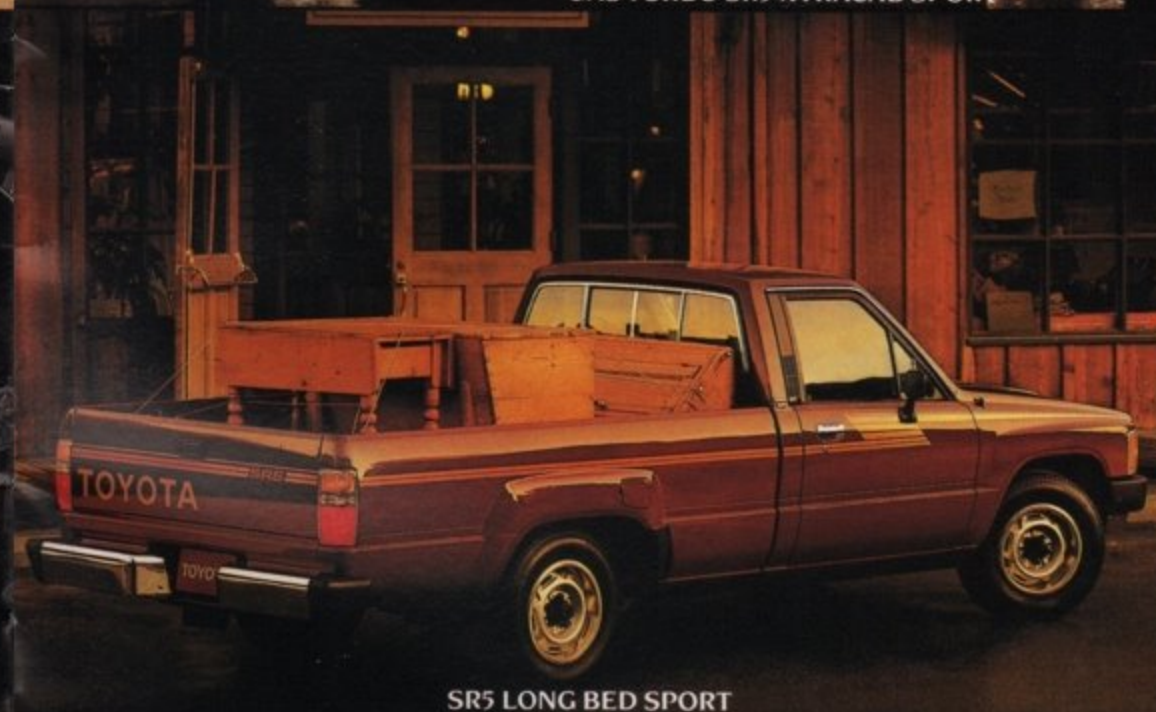
A 5-speed manual overdrive or an optional electronically controlled 4-

speed automatic overdrive transmission\* adds to your driving pleasure.

\*Depending on model selected. Shown with optional equipment. See your Toyota dealer for details.



GAS-TURBO SR5 XTRACAB SPORT



SR5 LONG BED SPORT



GAS-TURBO ENGINE



SR5 SPORT SEATS

**PLAY HARD.**  
Sporty good looks and comfortable interiors give the 4x2 SR5 Sport Trucks versatile appeal. The Gas-Turbo SR5 Sport Truck has the most powerful standard engine in any small truck.



# WORK FORCE

Toyota Long Bed Xtracab Deluxe, 1 Ton, Standard Bed, Cargo Van, and Cab/Chassis answer the working world's needs: 95% of all Toyota Trucks sold are still going

strong.

A reliable 2.4 liter EFI\* engine provides the muscle for the 1 Ton's 2655 lb. payload! The Long Bed Xtracab Deluxe gives you over 7 ft.

of cargo space with more hauling power than any other in its class.

\*1 Ton and Cab/Chassis models. Shown with optional equipment. See your Toyota dealer for details.



1 TON AND STANDARD BED TRUCKS



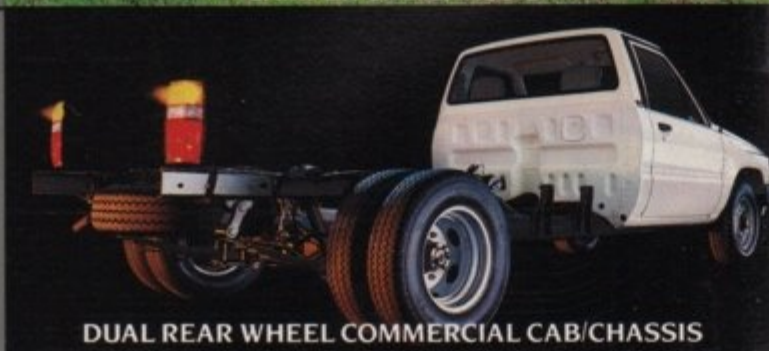
1 TON WITH OPTIONAL TOWING PACKAGE



LONG BED XTRACAB DELUXE



CAMPER CAB/CHASSIS



DUAL REAR WHEEL COMMERCIAL CAB/CHASSIS

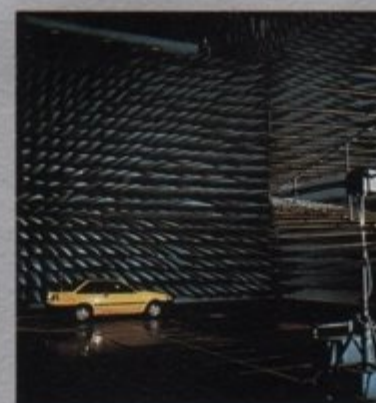
## TOUGH WORKHORSE

The Toyota 1 Ton gives you a 2655 lb. payload! An optional towing capacity lets you move up to 5000 lbs.†

\*Including occupants, equipment, and cargo.

††Not to exceed combined Gross Vehicle Weight Rating of 8500 lbs. Requires additional 5000 lb. weight-carrying frame-mounted Class 3 tow hitch.

## THE TOYOTA TOUCH



What is the Toyota Touch?

It's an obligation. And a commitment to you. When you purchase a Toyota car, truck, or van, we want you to derive more satisfaction and receive more value than anyone else can give you. Toyota dealers are committed to providing the extra effort, the special touch that you deserve when you buy a Toyota.

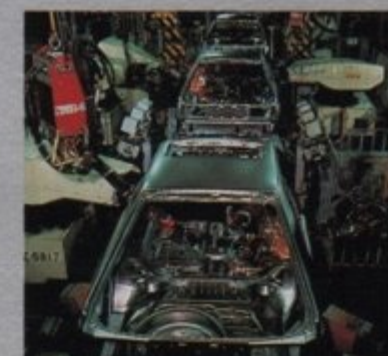
The Toyota Touch begins with design and engineering that combine innovation, performance, reliability, styling, and economy in every Toyota. Our ongoing goal is to be the best in automotive technology.

The Toyota Touch means using advanced manufacturing techniques, including the most creative use of robotics, to ensure that the Toyota you purchase is in superb condition when you take delivery.

According to surveys

of Toyota owners, the Toyota Touch has tangible value. Toyota cars receive the highest rating among small cars for having the lowest incidence of recurring problems after one year of ownership.\* Toyota trucks and vans lead their class for owner satisfaction and are unsurpassed for excellence of condition at delivery, according to owners surveyed after one year of ownership.\*\*

But the Toyota Touch means more than product excellence. The Toyota Touch means that you come first, and that it's our commitment to make sure that you are well



satisfied with your total ownership experience.

We give you a 12-month/12,500-mile product warranty that states, "every Toyota is tested and inspected at every stage of manufacture and is covered by Toyota's limited powertrain warranty of 2 years/24,000 miles.†" Electronic and computerized components have a 3-year/36,000-mile† warranty. But our commitment is even stronger

than that.

The Toyota Touch is our way of doing business with you. It means that every step of the way, from your first visit or



phone call to a Toyota dealer—through purchase and delivery—to after-sales service, we're committed to your satisfaction.

\*1985 J.D. Power & Associates Customer Satisfaction Index (for 1984 vehicles).

\*\*1985 J.D. Power & Associates Compact Truck Owners Satisfaction Index (for 1984 vehicles).

†See your Toyota dealer for warranty details.

\*EPA STATEMENT: Consult your Toyota dealer for EPA mileage figures.

Specifications and equipment based on available information at time of printing and subject to change without notice. Some vehicles shown with optional equipment. For information on additional options and accessories, contact your Toyota dealer.

See 1986 Toyota Accessories Brochure for additional Toyota-approved Accessories.

GET MORE FROM LIFE—BUCKLE UP!

WHO COULD ASK **TOYOTA** FOR ANYTHING MORE!



