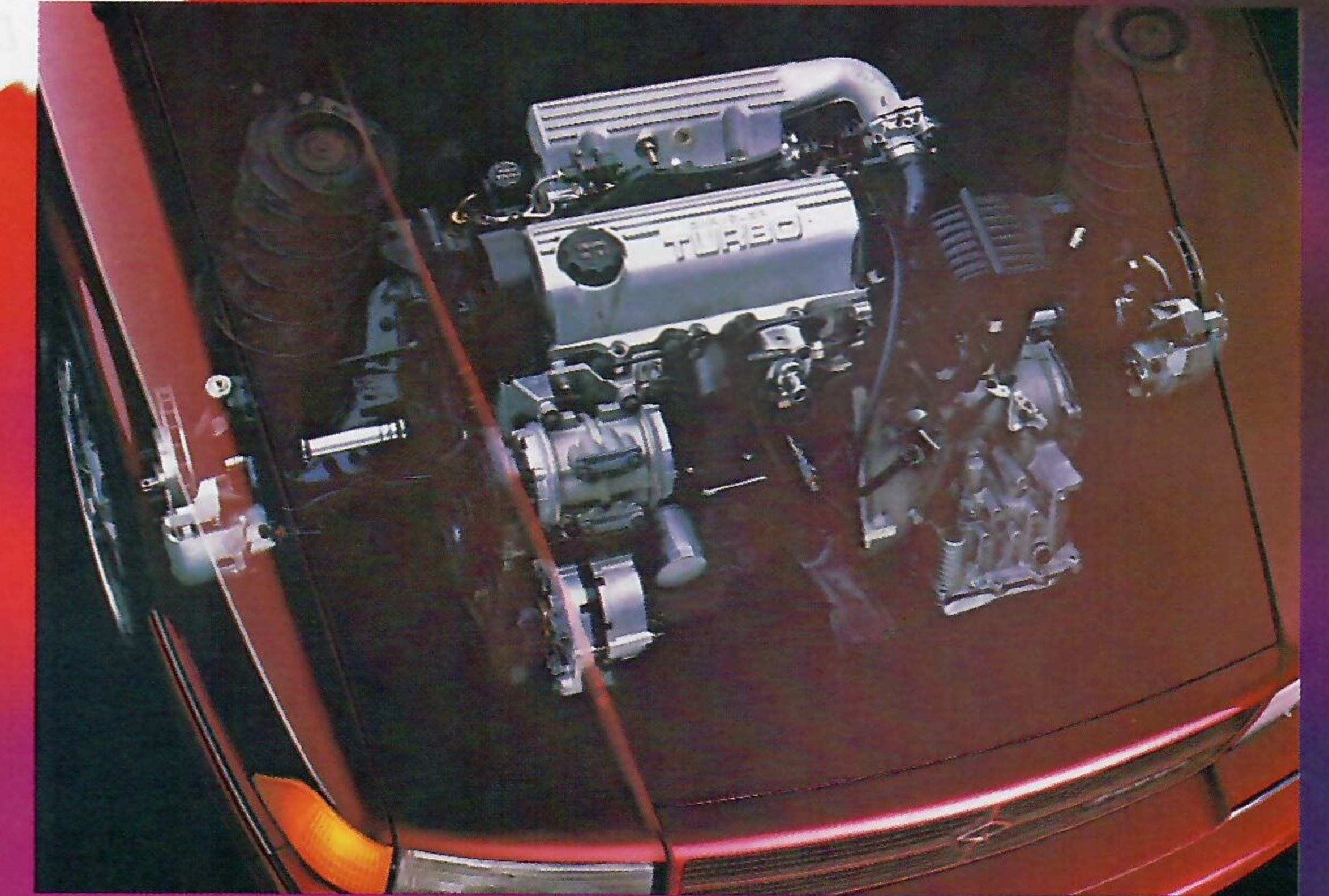


DODGE

1989



Spirit's 2.5-liter Turbo I power plant is the first twin balance-shaft four-cylinder engine built in the United States.



SPIRITED. For 75 years Dodge has been a leader in automotive engineering, innovation and integrity. In 1989, Dodge retains its claim to those traits by introducing the new Spirit, Spirit LE and Spirit ES models.

Their responsiveness is impressive. Touch the accelerator. Spirit gets up and goes. Instantly. Turn the sport steering wheel. Spirit responds. Tautly. Touch the brake pedal. Spirit reacts. Quickly.

Spirit. Available with an array of performance engines, such as the 2.5-liter turbo. With multipoint fuel injection. Four cylinders. Single overhead cam. And a turbocharger that responds quickly to provide strong low- and mid-range performance, such as 150 horsepower at 4,800 rpm. Plus, Spirit offers seating for six (with optional split-bench front seat). And expressive, aggressive lines. All in the new Dodge Spirit. It will awaken the driving spirit in you.

OPTIONAL SERVICE CONTRACT

Chrysler Service Contracts provide you with additional peace of mind protection for your new vehicle. Chrysler Motors offers a variety of plans to meet your needs. Plan coverage begins after your vehicle's basic warranty expires. A deductible applies. Allowances for car rental and towing are also included.

7/70 POWER TRAIN LIMITED WARRANTY

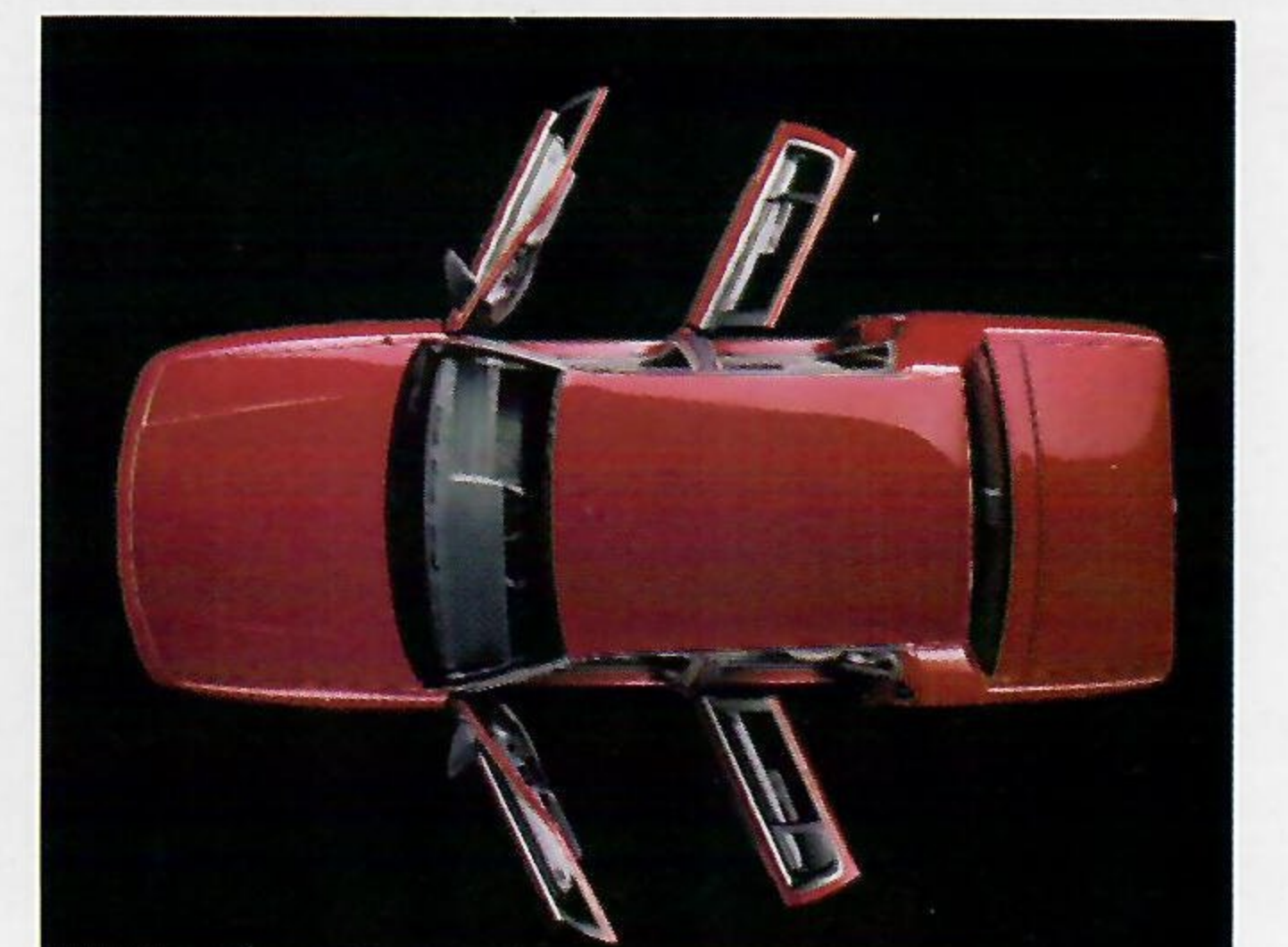
Upon expiration of the basic 12-month or 12,000-mile limited warranty, coverage is extended on

power train components to seven years or 70,000 miles. A deductible applies. See your dealer for a copy of the limited warranty.

7/100 ANTICORROSION LIMITED WARRANTY

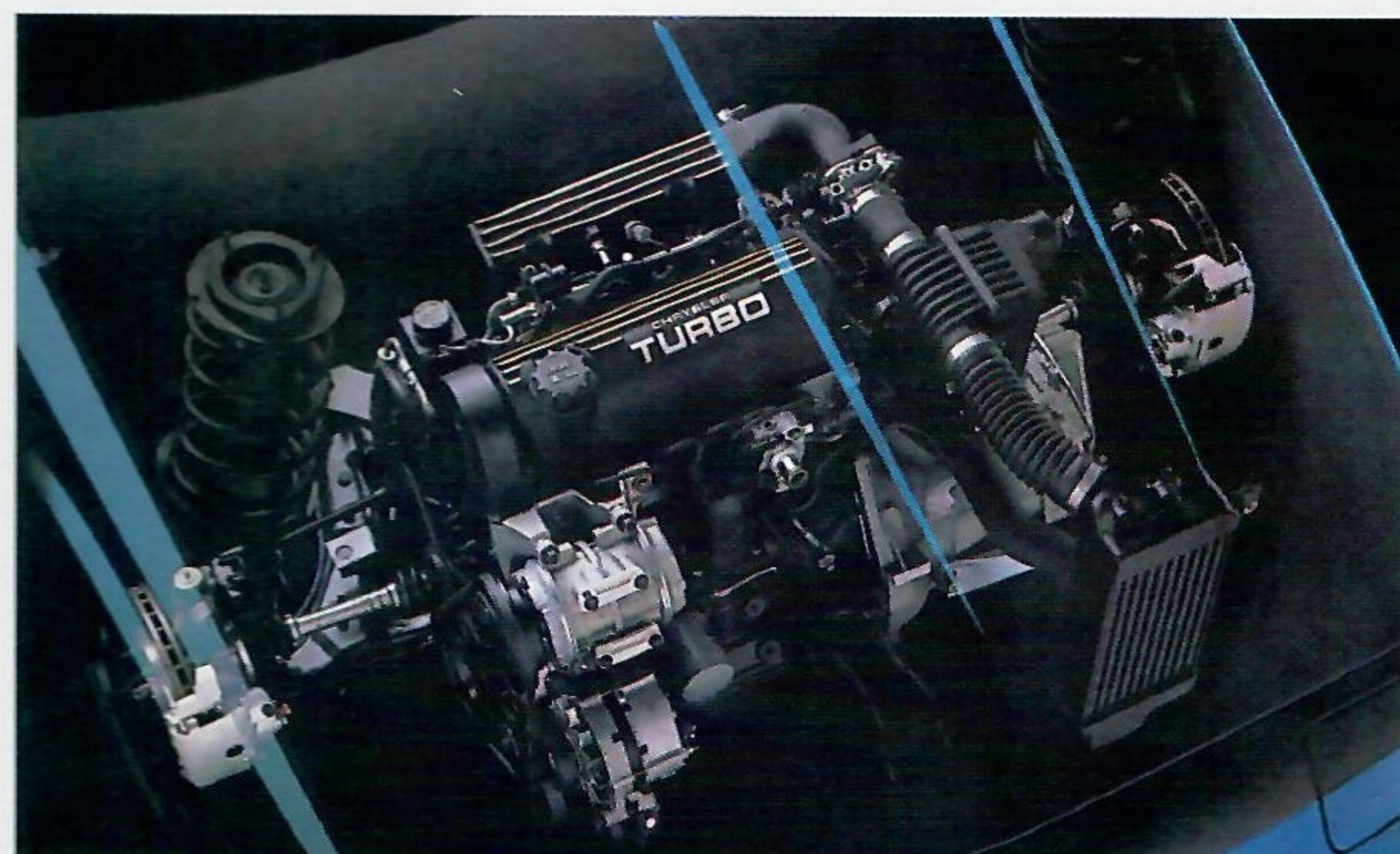
Your dealer will repair or replace at no charge outer body sheet metal panels found to have developed perforation (rust-through) in normal use up to seven years or 100,000 miles. See your dealer for a copy of the warranty.

About this catalog. Since the time of printing, some of the information you'll find in this catalog may have been updated. Ask your dealer for details. Some of the equipment shown or described throughout this catalog is available at extra cost.



Spirit's doors open wider for easier passenger entry and exit.

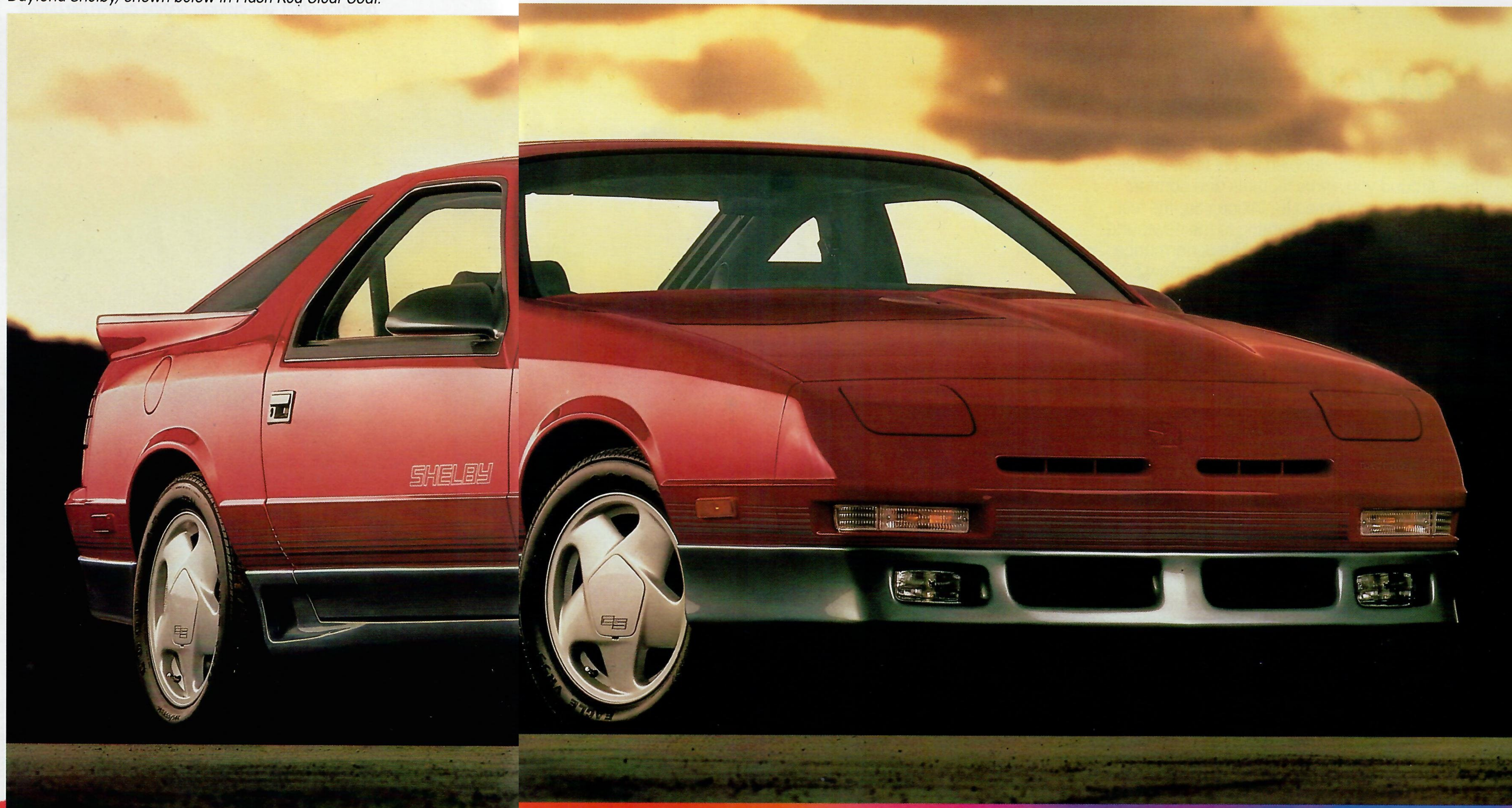
Charge your emotions with the exhilarating response of Daytona Shelby, shown below in Flash Red Clear Coat.



The 2.2-liter Turbo II engine releases the force of 174 wild horses into your control.



Buckle yourself into the Daytona Shelby interior. It's a performance cockpit that echoes this machine's performance ability.



WILD.

Daytona. Uncompromising. Uninhibited. Untamed. At first glance you know it. Behind the wheel you feel it. On the open road you experience it. *The sheer thrill of pure energy.* Daytona. Daytona ES and ES Turbo. Daytona Shelby. Front-wheel drive performance machines to spark imagination. Rekindle your respect for serious driving. Witness the wild one. Daytona Shelby. With 2.2-liter Turbo II intercooled multipoint EFI power. Speed-rated tires, ultra-high-performance four-wheel vented front/rear disc brakes and a long-life performance-tuned stainless steel exhaust system. It owns the road. You can, too.



Daytona deploys its standard driver-side air bag system in a front-end collision of sufficient force. The air bag pops out of the steering wheel trim cover to protect the driver's head and chest.

SHADOW DANCING.

Fun-Injected. Flashy. Feisty. Ahead of you, moves for the making. Turns for the taking. Beneath you, the surefooted feel of front-wheel drive. Around you, more features and comfort than you're accustomed to. Inside you, the feel of the wheel. Your heart beating to the newfound rhythm of the Shadow dance. The performance that rages within the turbocharged Shadow ES. The liftback sedan. And within the Shadow liftback coupe. All provide value from the ground up. Excitement from the word go. You and your Shadow.



Live the high life in the comfort, convenience and control of the Shadow ES interior, shown above in Medium Quartz.

Put yourself in the limelight. Let excitement be your Shadow ES, shown below in Exotic Red.





The power of original thinking is embodied in Caravan ES, shown above in Claret Red Pearl Coat.



Nestle into the security of Caravan's "above traffic" driving position, as well as other pleasant surprises in the luxury leather and vinyl-trim interior of Caravan LE, shown above in Almond.

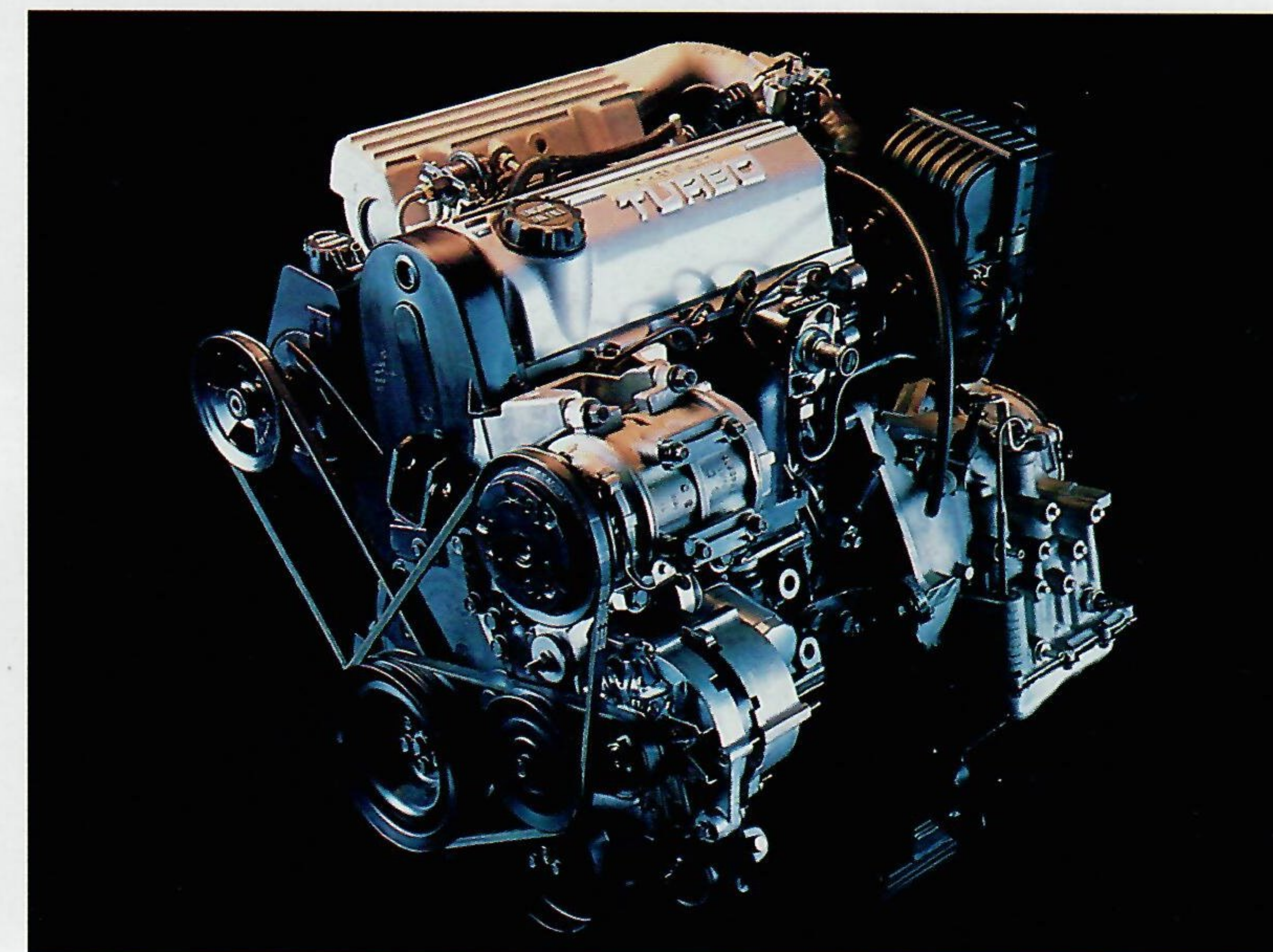
FRONTRUNNER.

Caravan. Distinctive. Proven. Unequaled. A breakthrough concept. Five years running. No other vehicle so creatively combines the best attributes of car, family wagon, and van. With the agility of front-wheel drive. And a wide sliding side door and swing-open liftgate. For extended versatility, there's the long-wheelbase Grand Caravan. With available eight-passenger seating and plenty of room to enjoy the ride. Great notions. Caravan and Grand Caravan. Challenged, but unequaled. The world's best-selling mini vans. The power of original thinking.

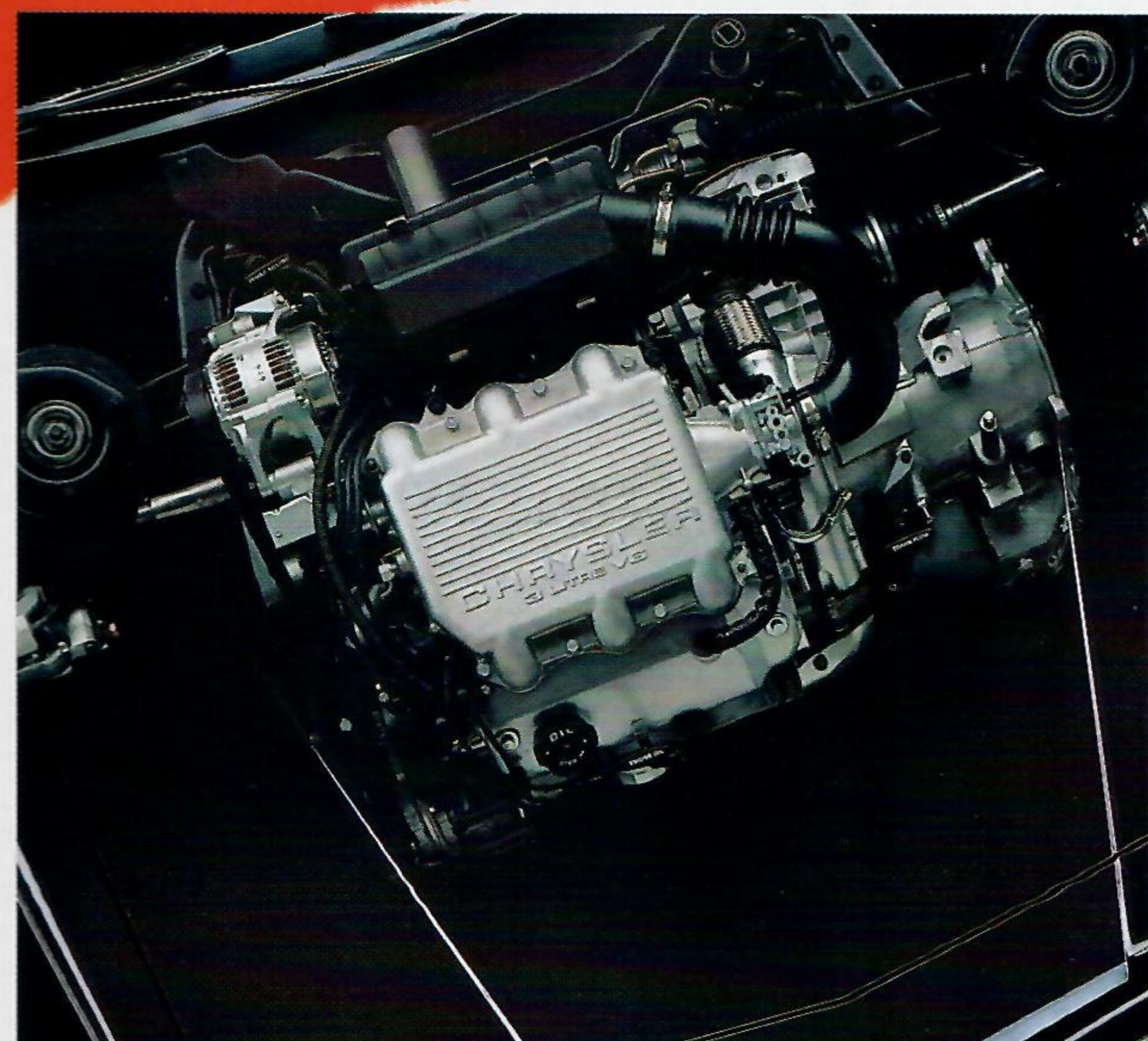


Caravan LE is shown above at the left in Claret Red Pearl Coat. Caravan SE is shown above at the right in Medium Suede/Dark Suede.

Underneath Caravan's hood beats the dependable heart of a performer. The standard 2.5-liter EFI engine. Or, for even greater performance, the available Mitsubishi-built 3.0-liter overhead cam V-6 engine. Or the outstandingly efficient 2.5-liter Turbo I power plant, which generates 150 horsepower at 4,800 rpm, and 180 pounds-foot of torque at 2,000 rpm. This optional turbocharged power plant has an overhead cam and counter-rotating balance shafts, and it provides a higher sustained peak acceleration level in Caravan—during the first five seconds of wide-open throttle acceleration, for example, the distance covered is increased by 10 percent.



Capture the raw energy of the 2.5-liter Turbo I engine. This multipoint EFI engine generates 150 horsepower at 4,800 rpm.



Above, the available Mitsubishi-built 3.0-liter overhead cam V-6 engine.

PROUD.

Dynasty. Classic. Contemporary. Compelling. Dynasty and Dynasty LE. An artful blend of time-honored heritage and state-of-the-art technology. Bringing together such traditional family sedan qualities as impressive ride. Exceptional comfort. And the most advanced engineering achievements of the day. Here is the roadability of front-wheel drive and the performance of Dynasty LE's standard 3.0-liter multipoint electronically fuel-injected engine. A truly elegant six-passenger sedan. Surprisingly affordable. With smooth ride and responsive acceleration, braking, steering, and handling for your total driving gratification.



Dynasty LE is shown above in Charcoal.



Lancer Shelby is shown above in Bright White Pearl Coat.



Dodge Omni America is shown above in Garnet Red Pearl Coat.



Aries America is shown above in Light Rosewood Pearl Coat.



Diplomat SE is shown above in Black Pearl Coat.

POWER TRIP. 1989 Dodge Lancer. **Hot. Cool. Impassioned.** A five-passenger front-wheel drive performance sedan with spirited sport handling. The perfect balance between practicality and power. Roominess and ride. Sophistication and flat-out fun. Power hungry? Feast on Lancer ES. With a 2.5-liter Turbo I engine. And a sports-styled cockpit. Notice others notice you in the sleek physique of Lancer, Lancer ES, or the powerfully exciting Lancer Shelby.

GREAT VALUE. Dodge Omni America. **Great Tradition. Proven Quality and Reliability.** Generously loaded with popular standard features. Yet one of the lowest-priced American-built cars. Still the best value of any domestic front-wheel drive subcompact.

This fun-to-drive five-door hatchback sports optional tinted windows all around, Rallye wheels, and that standard dynamic duo, the 2.2-liter EFI engine and five-speed manual overdrive transaxle. Plus room for five in a well-appointed interior with front bucket seats and reclining seatbacks. The smart choice.

GENEROUS VALUE. Aries America. **Reliable Efficiency. Versatile Performance.** Practical and dependable. America's highly popular and affordable front-wheel drive family car. With the standard 2.2-liter EFI engine, or the optional 2.5-liter EFI engine for even better performance. Standard five-speed manual overdrive transaxle, or available three-speed automatic transaxle. Improved front suspension. A long-life stainless steel exhaust system. And five-passenger seating with standard bucket seats. Or six-passenger seating with no-charge optional bench seat. All yours in a two- or four-door Aries America.

EXCLUSIVE APPEAL. Dodge Diplomat for 1989. **Classic Tradition.** Full value in a full-size, six-passenger automobile with classic styling. The memorable Diplomat Salon and Diplomat SE models. With a smooth, powerful 5.2-liter (318 CID) V-8 engine, power-assisted steering and brakes, automatic transmission, and long-life stainless steel exhaust system. And Diplomat SE offers such standard features as air conditioning, driver's side air bag, automatic speed control, and electric rear window defroster. Soft-cloth 60/40 front seat, color-keyed carpet, and a 15.6-cubic foot trunk area. Negotiate the road in a classic. Dodge Diplomat.

All product illustrations and specifications are based on current information at the time of publication approval. Although descriptions are believed correct, accuracy cannot be guaranteed. Chrysler Motors reserves the right to make changes from time to time, without notice or obligation, in prices, specifications, colors and materials, and to change or discontinue models. See your dealer for the latest information.

ALL THE JAPANESE YOU NEED TO KNOW

Built by Mitsubishi... Imported for Dodge.

AERODYNAMIC PERFORMER.

Colt GT. Stylishly Rounded. Handles the road. As the all-new aerodynamically shaped Colt GT. Or Colt GT with the Turbo Package. With its new 1.6-liter 16-valve DOHC ECI turbocharged engine. Special race-bred GT sport suspension. Four-wheel disc brakes and 14-inch sport steel wheels. Or heat the streets in Colt GT. With its new standard 1.5-liter multipoint EFI engine. And a standard five-speed manual overdrive transaxle. Front MacPherson struts and a new three-link rear suspension. And a cockpit built for comfort and performance. Your comfort. Your performance. In Colt GT. And GT Turbo.

ALL-NEW PERFORMER.

Colt E. Front-Wheel Drive Stability. With a wide road-hugging stance, and a new sporty rear end hatch design for maximum interior space. Powerful 1.5-liter engine with multipoint EFI. Smooth-shifting five-speed manual transaxle. Front MacPherson-type struts and new three-link rear suspension for a more comfortable ride. Power-assisted front disc brakes. And rack-and-pinion steering. For tight control in an all-new performer. Colt E.

SEVEN-PASSENGER MAGIC.

Colt Vista. Small Outside. Big Inside. Work your own magic. In front-wheel drive Colt Vista Wagon. Or Colt Vista Wagon with on-demand four-wheel drive. Plus a 2.0-liter engine with multipoint EFI. All-season steel-belted radials. Large tinted windows. And an interior with comfortable cloth and vinyl front bucket seats with folding seatbacks, as well as middle and rear recliners with seatbacks which, when folded down, open up 78 cubic feet for cargo. The best of passenger car handling and comfort, and the carrying capacity of vans. Colt Vista Wagon.

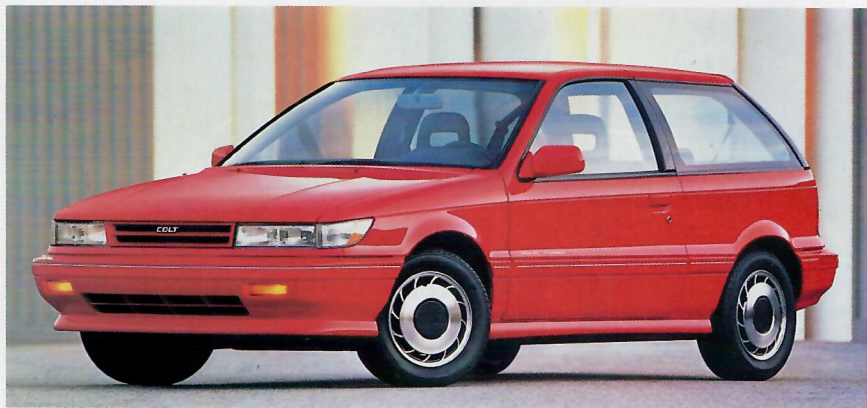
AFFORDABLE QUALITY FROM JAPAN.

Colt DL Wagon. With front-wheel drive. Or four-wheel drive. Five-passenger roominess. A cargo capacity of 60.4 cubic feet with the rear seatbacks folded down. The surprising muscle of the multipoint EFI engines—the front-wheel drive model's 1.5-liter, and the four-wheel drive's 1.8-liter. Power-assisted front disc brakes and self-adjusting rear drum brakes. A unique five-link rear suspension system (four-wheel drive models only). And all-season steel-belted radials. Get a hold of the good times. In Colt DL Wagon.

Dodge Imports built by Mitsubishi Motors Corporation are covered by a three-year or 36,000-mile basic limited warranty (excludes adjustments, tires, wear items and maintenance). There is additional warranty coverage on power train components (three years or 50,000 miles); plus outer-panel rust-through protection for five years/unlimited mileage (seven years or 100,000 miles on Colt three-door hatchbacks only). No deductible applies. Restrictions apply. See a copy of the limited warranty at your dealer.

Chrysler Purchase Assistance Program for the Physically Challenged

Cash reimbursements of up to \$500 are available for qualified adaptive driving devices on 1989 Chrysler Motors cars and trucks. For further information, contact your dealer or the PHYSICALLY CHALLENGED RESOURCE CENTER at 1-800-255-9877.



Colt GT Turbo is shown in Bright Red.



Colt E is shown in Light Blue.



Colt Vista Four-Wheel Drive Wagon is shown in Medium Blue.



Colt DL Four-Wheel Drive Wagon is shown in Bright Silver.

Buckle Up For Safety.



THE NEW SPIRIT OF DODGE
THE PERFORMANCE DIVISION OF CHRYSLER MOTORS