


1993 Eagle

The background of the page is a dark, almost black, textured surface. It appears to be a close-up of a rough material, possibly stone or a heavy fabric, with subtle variations in tone and texture. In the lower half of the image, there is a faint, light-colored, winding line that suggests a road or a path curving through a dark landscape. The overall mood is mysterious and dramatic.

These Cars Are Not Intended For The General Public.

Eagle vehicles aren't built for everybody. They're built for people who believe driving should be a positive, stimulating experience. Eagle Vision is the new sports sedan by which all others will be measured. For the third straight year, Eagle Talon TSi AWD has been named to *Car and Driver's* prestigious "Ten Best" list. This year, the new fun-to-drive Summit Coupe and Sedan take their place beside the already-successful Summit Wagon.

To learn more about all these uncommon cars, please read on.



Eagle Vision TSi



Eagle Talon TSi

Left to right: Eagle Summit ES Coupe, Eagle Summit ES Sedan, Eagle Summit AWD Wagon

To obtain more detailed information about the 1993 Eagle Vision, Talon, or Summit, visit your Jeep and Eagle dealer.



Our Designers and Engineers Started With a Dream and Ended With a Vision.

From its revolutionary cab-forward design to its extraordinary performance, Vision represents the best both designers and engineers have to offer. With the wide track of their cab-forward architecture, Vision TSi and ESi are set up to handle serious, mind-bending curves. Both are fitted with a four-wheel independent Touring Suspension that is tuned to deliver the kind of control serious drivers admire. For a more aggressive drive, Vision TSi offers a specially tuned Handling Group that includes suspension upgrades, performance tires, and firm-feel steering.

Powering Vision TSi is the outstanding new 3.5 litre 24-valve high-output V6 engine, delivering a stunning

The all-new 4-speed overdrive automatic transaxle is uniquely qualified to handle high-torque requirements. This electronically controlled system is programmed to adapt to when and where you drive.



214 horsepower. A unique manifold tuning valve helps the engine achieve peak torque output at a very low 2800 rpm for power with responsiveness. Vision ESi is equipped with a 153 horsepower 3.3 litre V6 featuring fully tuned intake and exhaust manifolds.

Four-wheel disc brakes are standard on both models, and anti-lock brakes are standard on Vision TSi (optional on ESi). Advanced traction control, optional on TSi, provides both improved acceleration and enhanced control over slick and loosely packed road surfaces.

Advanced traction control (optional on Vision TSi) gives the driver better acceleration on snow, ice, gravel, or sand. The system operates on the front driving wheels at speeds below 25 mph. If wheelspin occurs, brake pressure is applied to the spinning wheel, while the wheel with traction receives power to pull free.



The new 3.5 litre 24-valve high-output V6 engine (standard on Vision TSi) delivers an exhilarating 214 hp @ 5800 rpm and 221 lb-ft of torque @ 2800 rpm. This design optimizes engine breathing, which translates into instantaneous throttle response and impressive fuel economy.



Eagle Vision TSi

Maximum Space for Man, Minimum Space for Machine.

Inside, Eagle Vision provides an abundance of room for people. Outside, Vision is the ideal size

for excellent handling and maneuverability.

The key to Vision's exceptional roominess is its innovative cab-forward design. It

imparts a feeling of confidence and control and is comfortable and spacious. For example, it gives rear seat passengers more legroom and shoulder room than any competitor in its class.* It also helps minimize wind noise, allowing both driver and passengers to enjoy one of Vision's fine audio systems such as the optional Chrysler/Infinity Spatial Imaging™ sound systems.

Eagle Vision TSi interior features firm, contoured front bucket seats with infinitely adjustable recliners and generous 8.6 inches of seat travel.

Dual air bag supplemental restraint systems, almost unheard of in Vision's price class, are standard. The system is designed to deploy even if the vehicle's power system should fail.



Other features include leather-trimmed seating (optional on Vision TSi) and Automatic Temperature Control (standard on Vision TSi; optional on Vision ESi). Valuable safety features include dual air bags, height-adjustable front shoulder belts, and an optional integrated, fold-down rear child seat.

The highly contoured cockpit of Eagle Vision TSi includes a wrap-around instrument panel, leather-wrapped steering wheel, easy-to-read analog gauges, and excellent visibility in all directions.

Adapted for Eagle Vision, Chrysler's integrated, fold-down rear child seat design has received the National Highway Traffic Safety Administration's Award for Safety Engineering Excellence.



* Based on EPA Passenger Volume Index as applied to Ward's Upper Middle Class. 1992 data used where 1993 not yet available.



It Was the Best of Times: 0 to 60 in 6.5 Seconds.*

By the time ordinary cars are just getting up to speed, Eagle Talon TSi AWD is up to 60 mph. Talon's impressive 195 horsepower is produced by an equally impressive 2.0 litre 16-valve dual overhead camshaft (DOHC) intercooled turbo.



Eagle Talon TSi AWD

Talon TSi AWD's full-time all-wheel drive gives Talon its incredible road-holding qualities. For greater control in critical situations, you can choose an optional anti-lock brake system (ABS).

Car and Driver magazine named Eagle Talon TSi AWD to its prestigious "Ten Best" list for the third straight year.

The 2.0 litre 16-valve (DOHC) turbo produces up to 195 hp @ 6000 rpm and 203 lb-ft of torque @ 3000 rpm, among the highest in output of any production turbo of its size. The turbocharger provides a maximum 11.06 psi of boost, significantly improving engine performance without sacrificing efficiency.



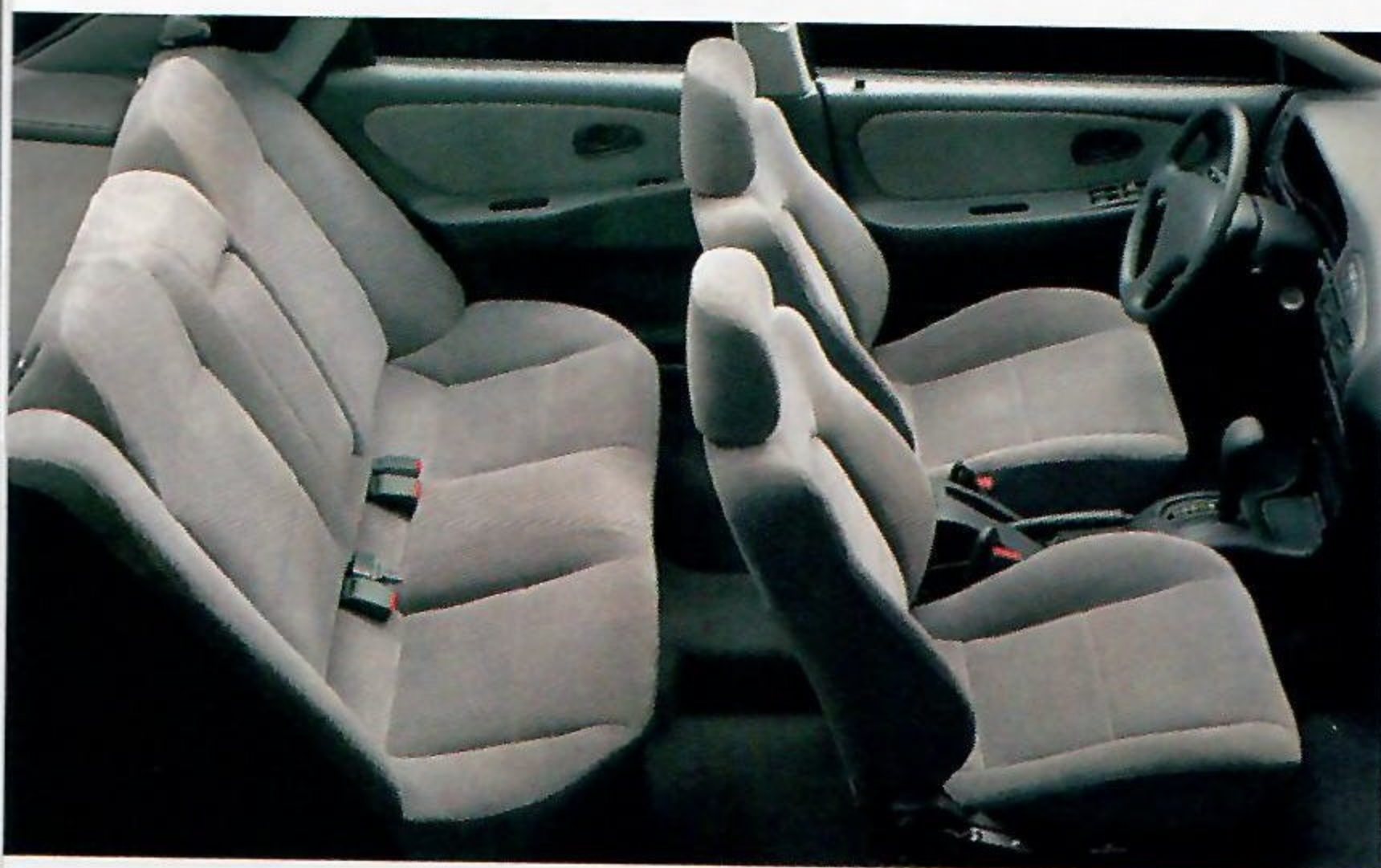
Eagle Talon TSi AWD with quick-ratio power steering provides responsive handling, and four-wheel disc brakes have ventilated front rotors to resist fade due to overheating.



Eagle Talon TSi AWD interior, shown with optional leather front seats and vinyl trim, includes standard performance seat with adjustable driver's thigh and lumbar support and side bolsters, leather-wrapped sport steering wheel, and shifter.

Its New Looks Aren't the Only Thing That'll Stop You in Your Tracks.

The new Eagle Summit Coupe and Sedan are beautifully designed. But their beauty is something much more than skin deep.

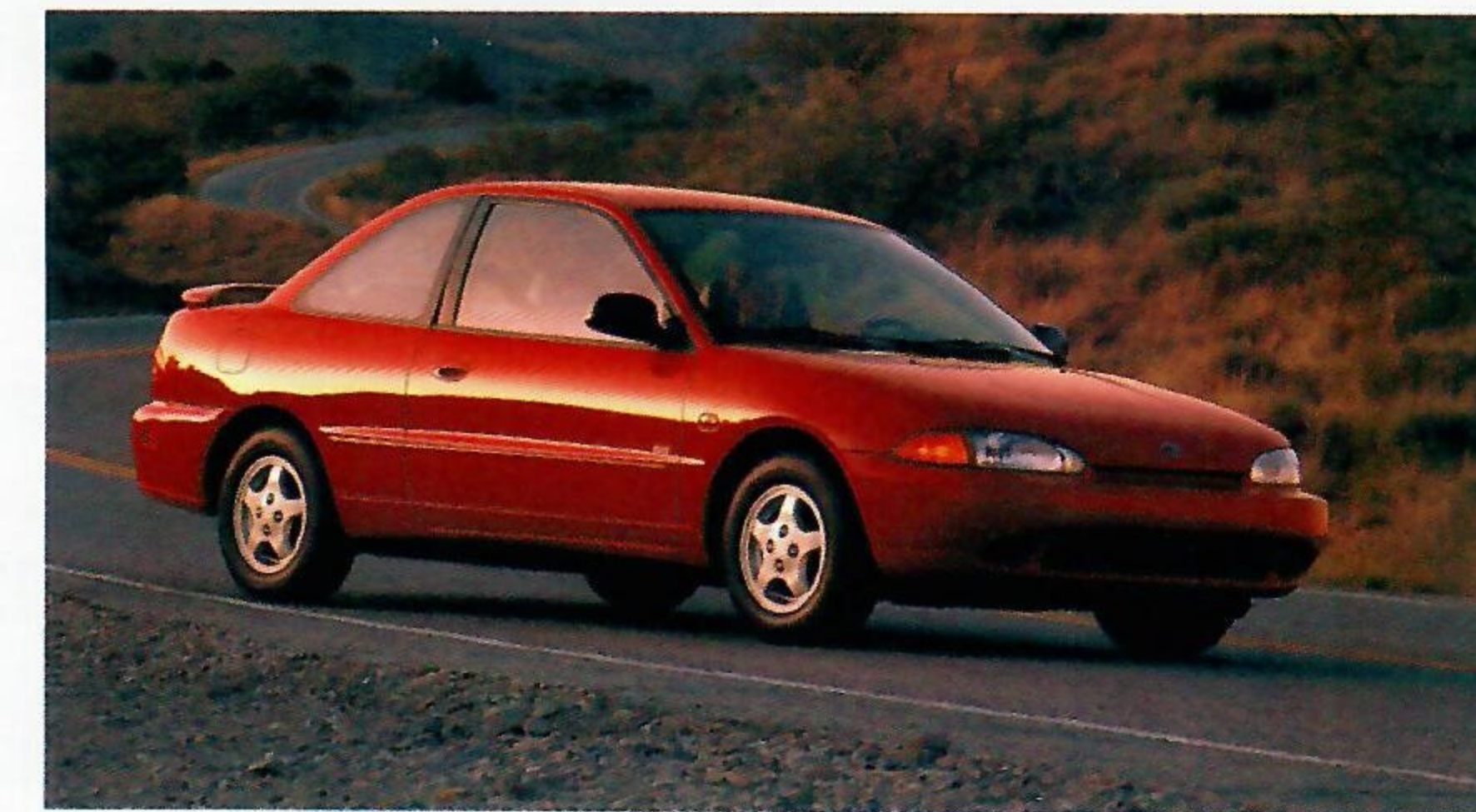


Eagle Summit ES Sedan interior is one of the roomiest in its class, with seating for five and a passenger volume of 89.3 cubic feet. Included is a split-folding rear seat that can be folded on either side for people or cargo.

To stop you safely, front disc brakes have been made standard. An advanced anti-lock brake system (ABS) is optional on Summit ES Sedan.

Under the hood, you'll find the spirited 1.5 litre 12-valve engine (standard on the Coupe and DL Sedan). The even more powerful 1.8 litre 16-valve engine is standard on ES Sedan and optional on DL Sedan. A responsive 5-speed manual overdrive transmission is standard. A 3-speed automatic is optional on ES coupe, and a 4-speed automatic overdrive is optional on both Sedan models (requires 1.8L engine).

Driver confidence is enhanced by front-wheel drive, rack-and-pinion steering, and four-wheel independent suspension. The Touring Suspension minimizes body roll while maximizing handling (standard on ES Sedan; optional on ES Coupe and DL Sedan).



Eagle Summit ES Coupe, all-new this year, is shown with optional Sport Appearance Package.



Eagle Summit ES Sedan, shown with optional Sport Appearance Package, features optional anti-lock brakes designed to help prevent brake lockup on slippery surfaces, allowing driver to maintain steering control during braking. Standard are 1.8L 16-valve MPI engine, four-wheel independent Touring Suspension, and split-folding rear seats with center armrest.

Here's the Spare Room You've Always Wanted.

Summit Wagon has what every family needs: room. And there's plenty of it, with the safety of a child-protection lock on the sliding side door. Summit Wagon holds five passengers comfortably plus 34.6 cubic feet of cargo. Fold the split-back rear seat (standard on LX; optional on AWD) and carry both people and their gear. Remove the rear

Eagle Summit AWD Wagon is shown with optional Custom Package, including premium cloth trim and split-back reclining rear bench seat with tumble-and-removable features (standard in LX).

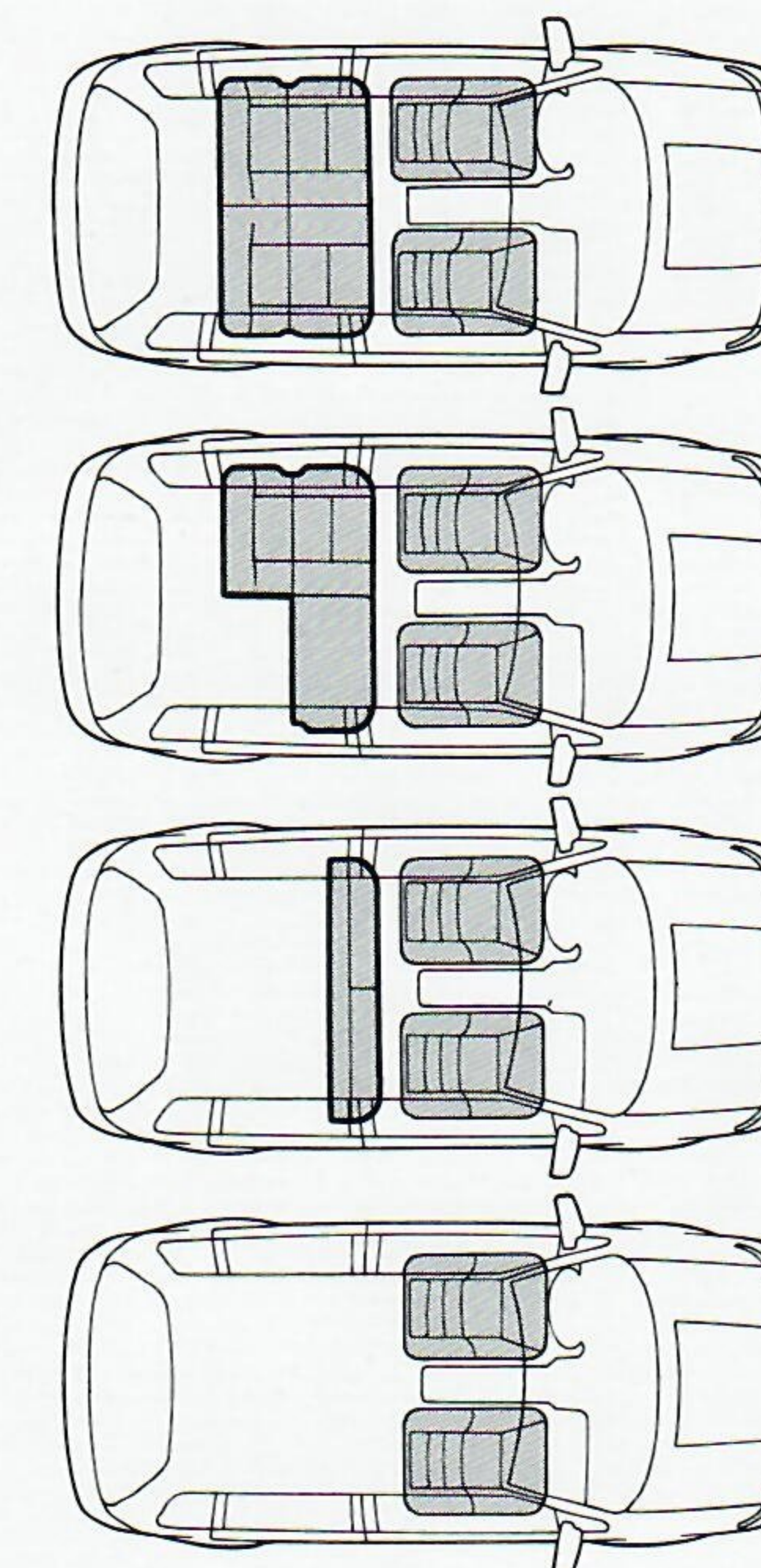


Eagle Summit AWD Wagon offers a convenient sliding door, tall cabin, flat floor, and rear liftgate for easy loading.

seat entirely and get a generous 79.0 cubic feet—the most of any small wagon.*

In addition to standard front-wheel drive, Summit Wagon is available with full-time all-wheel drive (AWD) and an advanced optional anti-lock brake system (ABS).

Summit Wagon's powerplants are no less advanced. Standard is the spirited yet efficient 1.8 litre 16-valve engine. For more power, choose the optional 2.4 litre 16-valve MPI powerplant (standard on LX).



(Top): With all seats up, Summit Wagon has 34.6 cubic feet of cargo space.

(Second): Fold the split-back rear seat (standard on LX; optional on AWD with Custom Package) and you can carry people and their gear.

(Third): Tumble forward the rear seat and you get 67.8 cubic feet of space behind the seat for cargo.

(Bottom): With rear seat removed, Summit Wagon has a class-leading 79.0 cubic feet.*

*Based on 1992 model year EPA Interior Volume Index and Ward's Small Car Class.



Not Intended For The General Public.



A Division of the Chrysler Corporation.

Litho in USA 8/92

Item No. 38005

Buckle up for safety.



Official Sponsor
1994 U.S. Olympic Team
36 USC 380