



# 05 EXCURSION



## > Step Up To Excursion.

Everywhere from urban fast lane to rugged backcountry, Ford SUVs empower you with confident capability. Escape, Explorer, Explorer Sport Trac, Expedition and Excursion – each proudly proclaims its Ford heritage, yet each clearly makes its own statement. The ultimate SUV for active lifestyles, the 2005 Ford Excursion can carry, tow and handle it all – and bring all your family and friends along. With a refreshed front grille, bumper and headlamps enhancing its already commanding presence, Excursion looks as good as it performs.



Excursion Eddie Bauer 4x4 \_ Toreador Red Metallic  
available 4x4 Trailer Tow Group



Escape

Expedition

Excursion

Explorer

Explorer Sport Trac

## 2005 Ford Excursion

### Power & Performance

03

6.0L Power Stroke® V8 Turbo Diesel Engine  
Mighty Triton™ V8 and V10 Engines  
TorqShift™ 5-Speed Automatic Transmission

### Capability

05

Shift-On-The-Fly 4-Wheel Drive  
11,000-lb. Towing Capacity  
Exclusive\* Tri-Panel Door™ System

### Interior

09

Rich, Leather-Trimmed Seating  
First-In-Class\* DVD Entertainment System  
Comforting Heated Seats

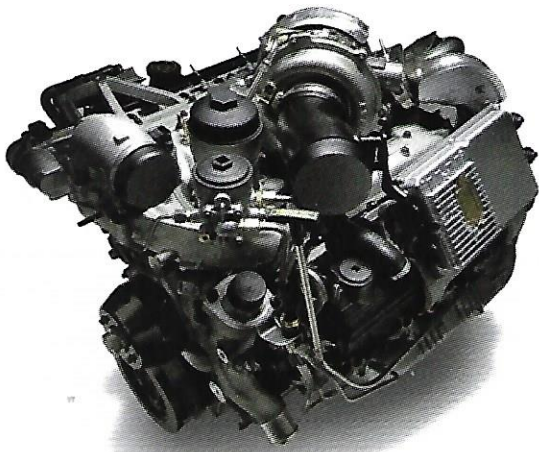
### Specifications

11

Model Highlights  
Standard and Available Equipment  
Genuine Ford Accessories  
Colors and Fabrics

\*Heavy-duty wagons class.





### Add Some Serious Pull

6.0L Power Stroke® V8 Turbo Diesel Engine – With 325 hp and a massive 560 lb.-ft. of torque, the low-end grunt of Excursion's available class-exclusive diesel is unmatched. Its Electronic Variable Response Turbocharger (EVRT™) provides increased airflow during steep grade climbing and high-altitude towing, while responding quickly to low-speed launch demands.



Excursion Limited 4x4 \_ Pueblo Gold Metallic  
available 4x4 Trailer Tow Group

# > Absolute Power.

Combine a hardy work ethic with some serious torque and you get the 2005 Ford Excursion. Its available 6.0L Power Stroke V8 Turbo Diesel engine provides more torque than any other vehicle in its class. 560 lb.-ft. to be exact. More than enough to get your horse trailer over the mountain or your pleasure craft safely out of the water. All 3 Excursion engines, in fact, have plenty of this low-end torque to get the job done. Leadership, after all, has its advantages.



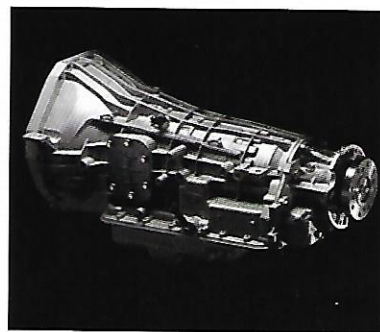
## Name Recognition

5.4L Triton™ V8 Engine – Excursion's standard engine bears a label that has earned its trust: Triton. With 255 hp @ 4500 rpm and 350 lb.-ft. of torque @ 2500 rpm, this V8 can power any adventure. It's teamed with a 4-speed automatic overdrive transmission.



## The Power Of 10

6.8L Triton V10 Engine – Increase the combustion chambers by 2, and Excursion's available Triton V10 engine pumps out 310 hp @ 4250 rpm and 425 lb.-ft. of torque @ 3250 rpm.



## Heavy-Duty Haulin' Heaven

TorqShift™ 5-Speed Automatic Transmission – Paired with the Power Stroke V8 Turbo Diesel, TorqShift features a selectable Tow/Haul mode that allows it to find its gear without hesitation when towing up steep grades, and to automatically downshift when towing heavy loads downhill.

# > Know Work, Know Play.

Just know that Ford Excursion can do it all. For heavy-duty applications that require heavy-duty towing capability, you can't do better than Excursion. Tow up to 11,000 lbs. when properly equipped, and head for the mountains with the confidence that your vehicle is up to the high-altitude challenge. For family vacations or trips to the trout stream, Excursion seats up to 9 and handles everyone's gear with ease. Versatile and capable, Excursion's enthusiasm knows no bounds.

## Dial It In

**4x4 Capability** – Excursion's available 4x4 system supplies electronic shift-on-the-fly convenience when the going gets tough. Turn the switch from 2WD to 4x4 HIGH to split driving power evenly between front and rear axles, giving you more traction. A 4x4 LOW setting maximizes low-speed traction for extreme grip.



## In Sight, In Mind

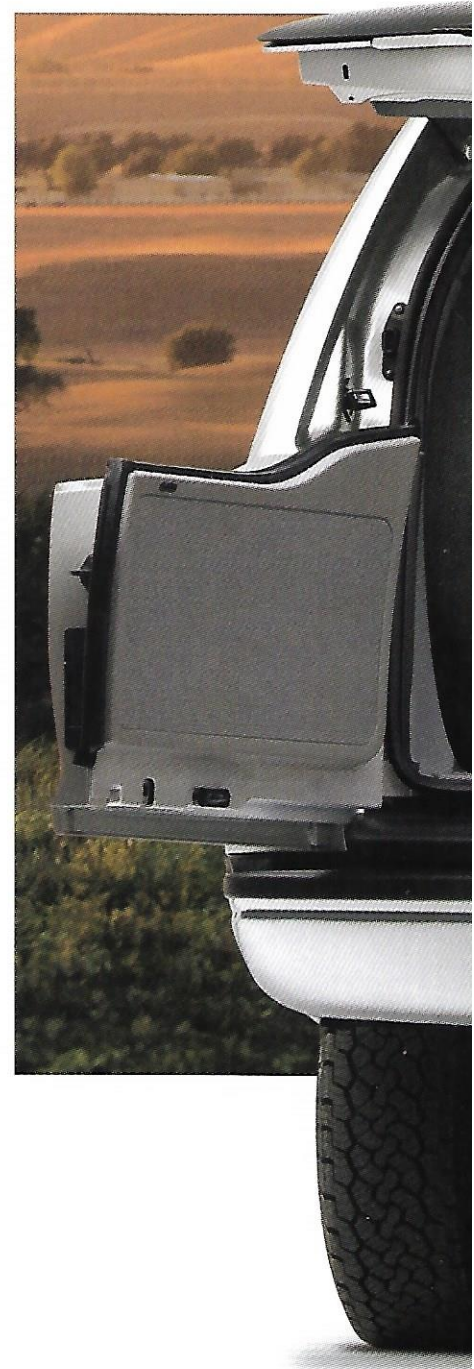
**Power Trailer Tow Mirrors** – To help keep an eye on your load and other traffic, these available mirrors do it all. Turn signals and clearance lights are integrated. A heated setting helps maintain clean sight lines in inclement weather. Manual fold-away and telescoping features offer excellent flexibility.



## Swing Open, Out And In

**Tri-Panel Door™ System** – Welcome to easy loading and unloading. Excursion's standard rear liftgate and split swing-out tailgate create one huge opening to access a class-leading 48.0 cu. ft. of cargo space behind the 3rd-row bench seat. Or, for SUV-leading cargo volume, fold down the 2nd- and 3rd-row seats to open up an incredible 146.4 cu. ft. of cargo volume.

Cargo and load capacity limited by weight and weight distribution.



Excursion XLT 4x4 - Silver Birch Metallic

## Haul Up To 5½ Tons

11,000-lb. Towing Capacity – Excursion's standard Heavy-Duty Trailer Tow Package with Class IV hitch receiver makes you tow-ready for up to 11,000 lbs.\* of horse trailer, powerboat or weekend-warrior equipment (see what we mean on the next page). So dream BIG.

\*When properly equipped



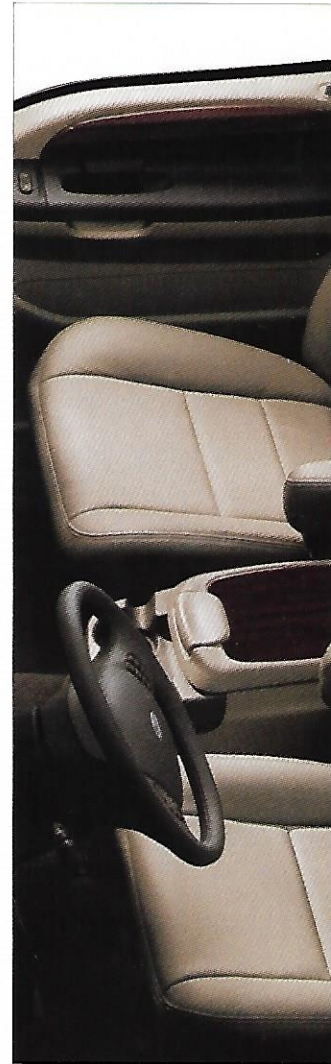






# > Big Sky Country.

Wide-open spaces abound throughout Ford Excursion. With the most interior room of any vehicle in its class, you'll be quite comfortable wherever you sit. Up front, available dual captain's chairs provide you with a commanding view of the terrain ahead. 2nd-row leather-trimmed captain's chairs are available on Eddie Bauer and Limited, while other models feature a standard 60/40 split-bench seat with dual recliners. In back, the versatile 3rd-row bench seat carries 3 and can be folded down or removed as needed.

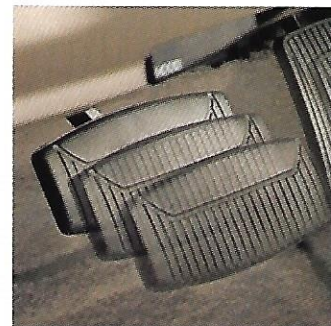


## Adventures Begin Here

Helpful Instrumentation – Redundant controls on Excursion Limited's leather-wrapped steering wheel (standard on Eddie Bauer with Eddie Bauer Premier Package) allow you to adjust audio, fan and temperature settings. A 6-disc CD changer (standard on Limited, available on all other models) lets you load music right into the in-dash system.

## Rugged Refinement

Eddie Bauer Two-Tone Interior – Extremely comfortable and easy to clean, leather-trimmed seats in Eddie Bauer sport a distinct two-tone appearance (Charcoal Black/Medium Pebble).



## The Greatest Show On-Road (Or Off)

Rear-Seat DVD Entertainment System – Showtime in Excursion features a built-in DVD player with a flip-down 7" LCD color screen, remote control and wireless headphones. Your favorite movie can help time fly if the scenery outside starts looking the same. This first-in-class system is available on Excursion XLT, Eddie Bauer and Limited.



Excursion Limited – Medium Pebble Leather-Trimmed Interior



## Custom Fit For Short Or Tall

Power-Adjustable Pedals – Standard on Eddie Bauer and Limited (with memory settings for 2 positions on Limited) and available on XLT and XLS models, you can find your optimum driving position by adjusting both the brake and accelerator pedals forward or back.

## You're Getting Warmer

Heated Front Seats – Standard on Limited and available on Eddie Bauer, nothing beats the radiating warmth of heated seats on a chilly, early-morning road trip.



# > Specifications

## MODEL HIGHLIGHTS

Each series includes the standard equipment of the previous series, except where additions/exceptions are noted.



### XLS

16" polished-aluminum wheels • Front and rear chrome bumpers • Body-color narrow bodyside moldings • Chromed grille surround with Medium Platinum-painted inserts • Power, heated sideview mirrors • Black running boards • Black door handles • 1st-row 40/20/40 split seat • Manual front and rear air conditioning • Premium AM/FM stereo with single-CD/cassette player



### XLT

Medium Platinum lower bodyside moldings • Autolamp • Comfort and Convenience Group • 1st-row captain's chairs with 6-way power driver and front-passenger seats and manual lumbar • 1st-row floor console • Rear-seat audio controls



### Eddie Bauer

16" premium aluminum wheels • Front and rear painted steel bumpers with Arizona Beige top cap • Arizona Beige lower bodyside and wheel-lip moldings • Body-color grille surround with Arizona Beige inserts • Dual power, heated signal mirrors • Reverse Sensing System • Arizona Beige illuminated running boards • Fog lamps • Body-color door handles • New Charcoal Black/Medium Pebble two-tone leather-trimmed seats • Electronic Automatic Temperature Control • Auto-dimming rearview mirror • Overhead console upgrade



### Limited

16" premium aluminum wheels • Front and rear body-color painted steel bumpers • Body-color lower bodyside moldings with chrome inserts • Body-color wheel-lip moldings • Body-color grille surround with body-color inserts • Power-adjustable pedals with memory • HomeLink® Universal Transceiver • Steering wheel with duplicate audio and climate controls • Premium AM/FM stereo with 6-disc in-dash CD changer

## STANDARD FEATURES

### Mechanical

4-speed heavy-duty automatic transmission (gas engines)  
 5-speed heavy-duty TorqShift™ automatic transmission (6.0L only)  
 4-wheel power disc brakes with Anti-lock Brake System (ABS)  
 Electronic shift-on-the-fly 4-wheel-drive system (4x4 models only)  
 Fail-safe engine cooling system\*  
 Front jounce bumpers (4x4)  
 Fuel tank – 44-gallon capacity  
 Low-speed travel shocks  
 LT265/75R16 all-season (4x2); all-terrain (4x4) OWL tires  
 Speed-sensitive, variable-assist power steering  
 Stabilizer bar – Front  
 Suspension – Twin I-beam front axle with coil spring (4x2); Monobeam front axle with leaf spring (4x4)

### Safety/Security

Airbags\*\* – Driver and right-front passenger  
 Autolock – Doors lock automatically when driving  
 Belt-Minder® safety belt reminder  
 BlockerBeam® – Front bumper underride protection system  
 Remote keyless entry system with driver's-door-mounted keypad  
 Safety belts – With automatic locking retractors  
 SecurILock® passive anti-theft system  
 Side-impact door beams  
 Tether anchors for child-safety seats – 3 in 2nd row, 2 with 2nd-row captain's chairs, 1 in 3rd row

### Seating

1st- and 2nd-row head restraints on outboard seating positions  
 2nd-row 60/40 split-bench seat – Dual reclining with center armrest  
 3rd-row folding bench seat – Removable

### Interior

Air conditioning – Front and rear with rear auxiliary controls  
 Coat hooks – 2 in 2nd row, 2 in 3rd row  
 Cupholders – 6 (XLS and XLT), 8 (Eddie Bauer and Limited)  
 Grab handles – Driver and passenger side, 1st and 2nd rows  
 Leather-wrapped tilt steering wheel with speed control  
 Overhead console – With front auxiliary AC controls, sunglasses/garage door opener holder and front dome/map lights  
 Power door locks with child-safety rear door locks  
 Power points – 3 (XLS), 4 (XLT, Eddie Bauer and Limited)  
 Power windows – With one-touch-down driver's-side feature  
 Rear floor air ducts  
 Shoulder belt height adjusters – 1st- and 2nd-row outboard positions  
 Visor vanity mirrors – Dual illuminated

### Exterior

Bodyside moldings – Body-color (XLS)  
 Keyless entry keypad  
 Lower bodyside moldings – Medium Platinum on XLT, Arizona Beige on Eddie Bauer, body-color with chrome inserts on Limited (includes wheel-lip moldings on Eddie Bauer and Limited)  
 Power, heated sideview mirrors  
 Privacy glass  
 Rear-window defroster  
 Rear Tri-Panel Door™ System  
 Roof rack with crossbars  
 Running boards  
 Tow hooks – Front  
 Trailer Tow Package – Heavy-duty package with Class IV hitch receiver, 7-pin wiring harness and connector, and trailer brake wiring kit  
 Windshield wipers/washers – Front: speed-sensitive intermittent; rear: intermittent

\*Distance traveled with limited engine power depends on vehicle load, terrain and ambient temperature.  
 \*\*Always wear your safety belt and secure children in the rear seat.

## MODEL-SPECIFIC FEATURES & OPTIONS

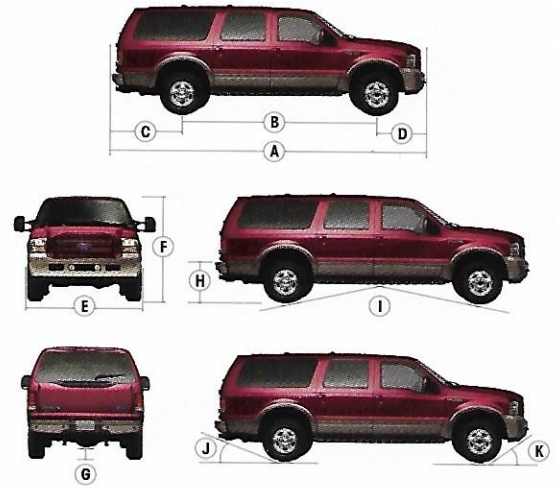
XLS 4x2 or 4x4			
XLT 4x2 or 4x4			
Eddie Bauer 4x2 or 4x4			
Limited 4x2 or 4x4			
<b>Mechanical</b>			
●	●	○	○
5.4L SOHC Triton™ V8 engine (n/a on Eddie Bauer 4x4 and Limited 4x4)			
○	○	○	○
6.8L SOHC Triton V10 engine (std. on Eddie Bauer 4x4 and Limited 4x4)			
○	○	○	○
6.0L Power Stroke® V8 Turbo Diesel engine with TorqShift™ transmission			
●	●	●	●
16" aluminum wheels (series-specific styling)			
○	○	○	○
18" forged-aluminum wheels (4x4 only) (late availability)			
○	○	○	○
Limited-slip rear axle (standard with 5.4L 4x4)			
○	○	○	○
Transfer case skid plate (4x4 only)			
<b>Safety/Security</b>			
○	○	○	○
Autolamp – Automatic on/off headlamps			
○	○	○	○
Reverse Sensing System			
<b>Seating</b>			
●	●	●	●
1st-row 40/20/40 cloth split seat with driver and passenger manual lumbar			
○	○	○	○
1st-row captain's chairs with 6-way power driver and front-passenger seats with manual lumbar			
○	○	○	○
1st-row heated seats			
○	○	○	○
2nd-row captain's chairs with inboard armrests			
○	○	○	○
Leather-trimmed seats†			
○	○	○	○
Leather-trimmed seats† – Premium (two-tone on Eddie Bauer)			
○	○	○	○
Power driver's seat			
○	○	○	○
Power driver's seat with memory††			
<b>Interior</b>			
○	○	○	○
Cargo Package – Includes reversible cargo mat (dual-sided carpet/rubber) and cargo net			
○	○	○	○
Cherry woodgrain appliqué accents on doors and floor console			
○	○	○	○
Day/night rearview mirror			
○	○	○	○
Auto-dimming rearview mirror			
○	○	○	○
Eddie Bauer Premier Package – Includes 6-disc in-dash CD changer, HomeLink® Universal Transceiver, memory feature for driver's seat and power-adjustable pedals, 1st-row heated seats and steering wheel with redundant audio and climate controls			
○	○	○	○
Electronic Automatic Temperature Control (front row only) with rear auxiliary air conditioning			
○	○	○	○
Floor console – Storage bin, rear audio controls and cupholders			
○	○	○	○
HomeLink Universal Transceiver††			
○	○	○	○
Overhead console upgrade – With standard equipment plus compass, trip computer, power rear-quarter-window controls and garage door opener storage			
○	○	○	○
Power-adjustable brake and accelerator pedals			
○	○	○	○
Power-adjustable brake and accelerator pedals with memory settings††			
○	○	○	○
Power rear-quarter windows§			
○	○	○	○
Premium AM/FM stereo with single-CD/cassette player			
○	○	○	○
Premium AM/FM stereo with 6-disc in-dash CD changer			
○	○	○	○
Rear-seat audio controls for volume, media, memory and seek			
○	○	○	○
Rear-seat DVD Entertainment System§§ – Includes 7" flip-down LCD color screen, 2 wireless stereo headphones, remote control and inputs for portable VCR or video game systems			
○	○	○	○
Steering wheel with duplicate audio and climate controls††			
○	○	○	○
XLT Travel Package – Includes trip computer and power rear-quarter windows			
<b>Exterior</b>			
○	○	○	○
4x4 Trailer Tow Group – Power, heated, manually telescoping/folding trailer tow mirrors with integrated turn signals and clearance lights; rear stabilizer bar (4x4 only)			
○	○	○	○
Fog lamps			
○	○	○	○
Non-illuminated running boards – Black			
○	○	○	○
Illuminated running boards – Arizona Beige (Black on Limited w/Black exterior)			
○	○	○	○
Chrome tubular running boards (4x4 only)			
○	○	○	○
Power, heated sideview mirrors with integrated turn signals			
○	○	○	○
Power, heated, manually telescoping/folding trailer tow mirrors with integrated turn signals and clearance lights (4x2 only)			

● Standard ○ Select Availability ○ Optional — Not Available

†Vinyl 3rd row. ††Optional on Eddie Bauer only as part of Eddie Bauer Premier Package.

§Optional on XLT as part of the XLT Travel Package. §§Requires 6-disc in-dash CD changer. XLT also requires XLT Travel Package.

## DIMENSIONS



Exterior	4x2/4x4
A. Overall length	226.7"
B. Wheelbase	137.1"
C. Overhang – rear	52.3"
D. Overhang – front	37.4"
E. Overall width	79.9"
F. Height (includes roof rack)	77.2"/80.2"
G. Ground clearance (rear axle)	7.4"/8.1"
H. Loadfloor height	36.1"/39.2"
I. Ramp breakover angle	6.8°/7.0°
J. Angle of departure	11.6°/15.1°
K. Angle of approach	20.3°/25.0°

Interior	
<b>1st row</b>	
Head room	41.0"
Shoulder room	68.3"
Hip room	67.5"
Leg room	42.3"
<b>2nd row</b>	
Head room	41.1"
Shoulder room	67.0"
Hip room	66.9"
Leg room	40.5"
<b>3rd row</b>	
Head room	38.6"
Shoulder room	64.9"
Hip room	52.5"
Leg room	39.0"
<b>Cargo Volume (cu. ft.)</b>	
Maximum cargo volume	146.4
Behind 2nd row	100.7
Behind 3rd row	48.0

Cargo and load capacity limited by weight and weight distribution.

## ENGINES

	5.4L SOHC Triton™ V8	6.8L SOHC Triton V10	6.0L Power Stroke® V8 Turbo Diesel
Horsepower (hp @ rpm)	255 @ 4500	310 @ 4250	325 @ 3300
Torque (lb.-ft. @ rpm)	350 @ 2500	425 @ 3250	560 @ 2000

### Maximum Loaded Trailer Weight\* (lbs.) Automatic Transmission

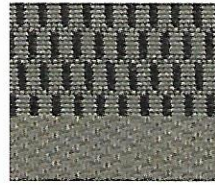
Engine	Axle Ratio	4x2	4x4
5.4L SOHC V8	3.73	6100	—
	4.10	7600	7200
6.8L SOHC V10	3.73	10,000	9600
	4.30	11,000	11,000
6.0L V8 Diesel	3.73	11,000	11,000

\*Maximum capabilities shown are for properly equipped vehicles with required equipment and a 150-lb. driver. Weight of additional options, equipment, passengers and cargo must be deducted from this weight. For additional information, see your Ford Dealer.

Cargo and load capacity limited by weight and weight distribution.



Medium Pebble Cloth  
Standard on XLS and XLT



Medium Flint Grey Cloth  
Standard on XLS and XLT



Medium Pebble Leather  
Optional on XLT



Medium Flint Grey Leather  
Optional on XLT



Medium Pebble and Charcoal  
Black Two-Tone Leather  
Standard on Eddie Bauer



Premium Medium  
Pebble Leather  
Standard on Limited

## INTERIOR COLORS

Medium Pebble	
Medium Flint Grey	
XLS/XLT	
● ●	Oxford White
● ●	Toreador Red Metallic
● ●	Aspen Green Metallic
● ●	True Blue Metallic
● ●	Silver Birch Metallic
● ●	Black
Eddie Bauer	
●	Oxford White
●	Toreador Red Metallic
●	Aspen Green Metallic
●	True Blue Metallic
●	Black
●	Estate Green Metallic
●	Mineral Grey Metallic
Limited	
●	Black
●	Pueblo Gold Metallic
●	Mineral Grey Metallic

## GENUINE FORD ACCESSORIES

See your dealer for these and other great dealer-installed accessories or visit us at [fordaccessoriesstore.com](http://fordaccessoriesstore.com).



### Power From Afar

Remote Start – Get your vehicle warmed up (or cooled down) with this convenient system. You can use it to turn on the ignition, lock and unlock the doors, or activate the panic alarm – from up to 500 ft. away.



### Stow On The Go

Rear Door Storage Bins – Keep cargo conveniently in place and neatly out of the way with these storage helpers.



### Leave It Here

All-Weather Floor Mats – Made of heavy-duty rubber with deep channels, these mats collect dirt and mud and can be easily washed off.



### Up On The Roof

Yakima® MegaWarrior – Pack even more gear, safari-style, with this rooftop accessory. Handles everything from luggage to a kayak.



### Towing Made Easy

Swivel-Mount Hitch – This special drawbar swivels left and right to make trailer hookups easy. It automatically locks into towing position once the connection is made.



### Hands On The Wheel

Mobile-Ease Hands-Free Communication System – Place and receive hands-free calls through the audio system with this Bluetooth® technology and your Bluetooth-equipped cell phone.

## EXTERIOR COLORS



Oxford White



Toreador Red Metallic



Aspen Green Metallic



True Blue Metallic



Silver Birch Metallic



Black



Estate Green Metallic



Pueblo Gold Metallic



Mineral Grey Metallic

Ford uses clearcoat paint for beauty and protection. Shown with optional equipment. Colors shown are representative only. Not all colors are available on all models. See your dealer for actual paint/trim options.

## WHEELS



16" Polished-Aluminum Wheel  
Standard on XLS and XLT



16" Premium Aluminum Wheel  
with Bright Center Cap  
Standard on Eddie Bauer



16" Premium Aluminum Wheel  
with Limited Center Cap  
Standard on Limited



18" Forged-Aluminum Wheel  
with Center Cap  
Optional on Eddie Bauer and Limited  
(4x4 only) (late availability)



Get the ride you want. Whether you plan to lease or finance, you'll find the choices that are right for you at Ford Credit. Ask your Ford Dealer for details or check us out at [fordcredit.com](http://fordcredit.com).



For a purchase or lease, the Ford **Extended Service Plan (ESP)** gives you "Peace-of-Mind" protection designed to cover key vehicle components and protect you from the cost of unexpected repairs. Ask your dealer for an ESP backed by Ford Motor Company and honored at all Ford dealerships.



Choose the insurance program that's designed for your vehicle – Ford Motor Company **Insurance Services**. Our program helps you receive the rates and service you deserve. Call 1-877-367-3847 or visit us at [fordvip.com](http://fordvip.com) for a no-obligation quote. Insurance offered by American Road Services Company (in CA, American Road Insurance Agency), a licensed agency and subsidiary of Ford Motor Company.



As a corporate affiliate of the **American Quarter Horse Association**, Ford Motor Company is proud to be associated with this prestigious organization. We are honored to advance the interest in and the support of events that showcase the intelligence, strength and versatility of America's Horse™ and its rider.



Ford is working closely with the **National Park Foundation** to help develop innovative transportation and environmental solutions that enable visitors to enjoy America's National Parks without compromising their beauty.



Ford is a proud Partner in Education and Founding Member of **Tread Lightly!** Through Education, Restoration and Research, Tread Lightly! empowers generations to enjoy the outdoors responsibly.



BEST-IN-CLASS\* INTERIOR ROOM

THE MOST CARGO SPACE OF ANY SUV

CLASS-LEADING 48.0 CU. FT. OF CARGO SPACE  
BEHIND 3RD-ROW BENCH

BEST-IN-CLASS 560 LB.-FT. OF TORQUE WITH  
6.0L POWER STROKE\* V8 TURBO DIESEL ENGINE

ONLY VEHICLE IN ITS CLASS TO OFFER DIESEL POWER

CLASS-EXCLUSIVE TRI-PANEL DOOR™ SYSTEM

FIRST-IN-CLASS  
REAR-SEAT DVD ENTERTAINMENT SYSTEM

\*Heavy-duty wagons class.