



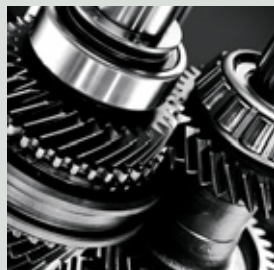
GLS IN PLATINUM SILVER

*Theautochannel.com †See dealer for LIMITED WARRANTY details.

Accent. The name may be the only thing you recognize about Hyundai's new compact sedan. Full of decidedly upscale standard features and stylish details, the new Accent leads its class in engine performance, interior space and safety, including ABS and six airbags. With a combination of smart engineering and exhaustive quality testing, "Hyundai raises the bar, delivering a higher level of value and sophistication in the small-car class."* All this, plus America's Best Warranty†—proof of our dedication to building the highest-quality cars. So you can travel smart, no matter what city you're in.



- 16-VALVE, DOHC 4-CYLINDER ENGINE
- CONTINUOUSLY VARIABLE VALVE TIMING (CVVT)
- CLASS-LEADING 110-HORSEPOWER
- 4-WHEEL DISC BRAKES WITH ABS
- RACK-AND-PINION STEERING



Transmission

Take active control of your driving experience with the Accent's standard 5-speed manual transmission. Or sit back and enjoy the ease of the optional 4-speed automatic with overdrive and lock-up torque converter.



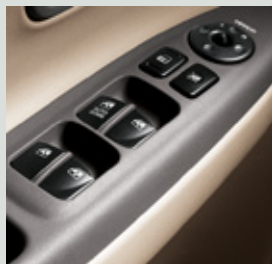
4-Cylinder Engine

Accent's spirited 1.6-liter 4-cylinder engine with CVVT is the most powerful in its class, delivering the responsive power that city streets were made for. Plus, it gets up to an impressive 36 miles per gallon*.

*Automatic Transmission



GLS BEIGE INTERIOR

**Power Controls**

Make your Accent GLS even more comfortable with the available power controls, including power windows with driver's auto-down, heated side mirrors and power door locks.

**Rear Center Armrest**

Back-seat passengers will feel more like invited guests. The hospitably designed rear seats include a center armrest with dual cupholders, making everyone feel right at home.

**Audio System**

Go ahead. Crank up your favorite song with this powerful 172-watt AM/FM/CD audio system. Notably complete with an equalizer and six speakers, your ears will never be happier.

**8-Way Adjustable Driver Seat**

Talk about an over-achiever. The Accent's ergonomically designed driver's seat gives you eight different ways to find the perfect position for your legs, back and shoulders.

Yes, the new Accent is technically a compact sedan. You just won't believe it when you're inside. This Accent has the most total interior volume for a sedan in its class. And with its contemporary, two-tone interior, top-notch standard features and comfortable, flexible seating with plenty of leg room for all, you may even find it a little indulgent. Now that's a nice surprise.



GLS BEIGE INTERIOR

- MOST TOTAL INTERIOR VOLUME FOR A SEDAN IN ITS CLASS
- TILT STEERING WHEEL
- SEATBACK POCKETS
- BOTTLE HOLDERS AND MAP POCKETS IN ALL FOUR DOORS
- DRIVER AND FRONT-PASSENGER ILLUMINATED VANITY MIRRORS

SIX AIRBAGS COME STANDARD. BECAUSE SAFETY ISN'T A LUXURY.



GLS BEIGE INTERIOR



Front Seatbelt Pretensioners

Front seatbelt pretensioners tighten the shoulder belts during a frontal impact, helping reduce forward movement of the occupants. The force limiters help manage the belt's load across the torso.

The new Accent has the most standard safety features in its class, including six airbags¹ and a 4-wheel Anti-lock Braking System with Electronic Brake Force Distribution. The extensive list also includes front seatbelt pretensioners with force limiters, an energy-absorbing steering column and a rear LATCH child-seat attachment system. All standard. Because peace of mind shouldn't cost extra.



Anti-lock Braking System

The Accent features a standard 4-wheel Anti-lock Braking System with Electronic Brake Force Distribution, to help maintain steering control when braking hard in emergency situations.



Adjustable Head Restraints

It's easy to make all your passengers a little safer. Each head restraint adjusts almost effortlessly, improving your protection against whiplash in the event of a collision.

- WINDSHIELD SUNSHADE BAND
- MICRO AUDIO ANTENNA
- VARIABLE INTERMITTENT WINDSHIELD WIPERS
- TACHOMETER
- TWO 12-VOLT OUTLETS
- FRONT AND REAR STORAGE TRAYS

GLS 4-DOOR IN EBONY BLACK



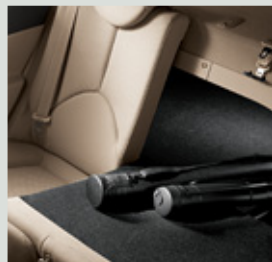
Heated Power Mirrors

Objects in mirror may be colder than they appear. From the cozy comfort of the Accent's interior, you can heat the available dual power-adjustable side mirrors for a perfectly clear view.



Remote Keyless Entry

The Premium-Sport Package offers the convenience and security of remote keyless entry with alarm, a system that easily activates the power door locks, even when your hands are full.



60/40 Split Rear Seatback

Skis. Luggage. A floorlamp or two. You can bring along almost anything, thanks to the class-leading volume and versatility of the Accent's 60/40 split fold-down rear seatback.



GLS IN PLATINUM SILVER

Everyone wants to stand out a little. One easy way is to drive a car with personality. And the new Accent has lots of it thanks to a striking, chrome-accented grille, bodycolor door handles, mirrors and bodyside molding, as well as aerodynamic halogen headlights. It all adds up to one uniquely designed sedan that looks like the class leader it is. Suddenly, city beautification is as easy as parking your new Accent.

2006 ACCENT / SPECIFICATIONS

SAFETY FEATURES	ACCENT GLS
4-wheel Anti-lock Braking System (ABS) with Electronic Brake Force Distribution (EBD)	S
Advanced Driver and Front Passenger Airbags (SRS) with Occupant Classification System (OCS)	S
Driver and Front Passenger Side-impact Airbags (SRS), seat-mounted	S
Front and Rear Side-curtain Airbags, roof-mounted	S
Front and Rear Crumple Zones	S
Energy-absorbing Steering Column	S
3-point Seatbelts, all seating positions	S
Front Seatbelt Pretensioners with Force Limiters	S
Adjustable Front Seatbelt Anchors	S
Adjustable Head Restraints, all seating positions	S
Rear LATCH Child-seat Attachment System	S
Childproof Rear Door Locks	S
EXTERIOR FEATURES	
Tinted Glass	S
Windshield Sunshade Band	S
Bodycolor Side Mirrors	S
Dual Power Heated Side Mirrors	PS
Variable Intermittent Windshield Wipers/Washer	S
Bodycolor Bumpers and Bodyside Molding	S
Micro Audio Antenna	S
Bodycolor Rear Garnish	S
INTERIOR FEATURES	
Air Conditioning	O/PS
Cabin Air Filter	S
Rear Seat Heater Ducts	S
Rear-window Defroster	S
Power Windows with Driver's Auto-down and Power Reserve	PS
Illuminated Power Window Switches	PS
Power Door Locks	PS
172-watt AM/FM/CD Audio System with Equalizer and 6 Speakers	S
Cloth Seats	S
Reclining Front Bucket Seats	S
8-way Adjustable Driver Seat with Folding Armrest	S
Tilt Steering Wheel	S
Tachometer	S
Digital Clock	S
Cupholders, dual front	S
Portable Ashtray	S
Rear Center Armrest with Cupholders	S
60/40 Split Fold-down Rear Seatback	S
Driver and Front Passenger Illuminated Vanity Mirrors	S
Map Pockets and Bottle Holders, all doors	S
Seatback Pockets	S
Front and Rear Storage Trays	S
Remote Keyless Entry with Alarm and Panic Alert	PS
Carpeted Floor Mats	O

S = Standard Feature O = Optional Feature PS = Premium Sport Package

* EPA estimates for comparison. Your actual mileage will vary with options, driving conditions, driving habits and vehicle's condition.

While the information contained in this brochure was correct at time of printing, specifications and equipment can change. No warranty or guarantee is being extended in this brochure, and Hyundai reserves the right to change product specifications and equipment at any time without incurring obligations. Some vehicles are shown with optional equipment. Specifications apply to U.S. vehicles only. Please contact your Hyundai dealer for current vehicle specifications.

2006 ACCENT / SPECIFICATIONS

ENGINE		ACCENT GLS
Inline 4-cylinder with Continuously Variable Valve Timing		S
Displacement (liters)		1.6
Horsepower @ rpm (SAE net)		110 @ 6000
Torque (lb.-ft. @ rpm)		106 @ 4500
Compression Ratio		10.0:1
Valve Train		16-valve DOHC
Fuel System		Multi-port Programmed Fuel Injection
Ignition System		Electronic
DRIVETRAIN/TRANSMISSION		
Drive Configuration: Front-wheel Drive		S
Manual Transmission: 5-speed		S
Automatic Transmission: Electronic 4-speed with Overdrive and Lock-up Torque Converter		O
Final Drive Ratio (MT/AT)		4.056/4.041
BODY/SUSPENSION/CHASSIS		
Body Type: Five-passenger Sedan		S
Body Construction: Unibody		S
Front Suspension: Independent; MacPherson Struts with Coil Springs		S
Rear Suspension: Coupled Torsion Beam Axle with Coil Springs		S
Power-assisted Rack-and-Pinion Steering, engine-RPM-sensing		S
Power-assisted 4-wheel Disc Brakes, front ventilated		S
4-wheel Anti-lock Braking System (ABS) with Electronic Brake Force Distribution (EBD)		S
Turning Diameter, curb-to-curb (ft.)		33.1
Wheels/Tires		
14-inch Steel Wheels with Full Covers and P185/65HR Tires		S
15-inch Alloy Wheels with P195/55VR Tires		PS
EXTERIOR DIMENSIONS		
Wheelbase (in.)		98.4
Length (in.)		168.5
Width (in.) (excluding mirrors)		66.7
Height (in.)		57.9
Track (in.), front/rear		57.9/57.5
Curb Weight (lbs.) MT/AT		2366/2403
INTERIOR DIMENSIONS		
Head Room (in.), front/rear		39.6/37.8
Leg Room (in.), front/rear		42.8/34.3
Shoulder Room (in.), front/rear		53.5/53.1
Hip Room (in.), front/rear		50.6/49.6
Cargo Volume (cu./ft.)		12.4
Passenger Volume (cu./ft.)		92.2
EPA Size Classification		Compact
EPA MILEAGE ESTIMATES*/FUEL CAPACITY		
5-speed Manual Transmission (City/Highway)		32/35
4-speed Automatic Transmission (City/Highway)		28/36
Fuel-tank Capacity (gal.)		11.9

S = Standard Feature O = Optional Feature – = Not Available

2006 ACCENT



GLS

STANDARD FEATURES INCLUDE:

- 1.6-LITER, DOHC 4-CYLINDER ENGINE WITH CONTINUOUSLY VARIABLE VALVE TIMING
- 5-SPEED MANUAL TRANSMISSION
- POWER-ASSISTED RACK-AND-PINION STEERING
- 4-WHEEL DISC BRAKES
- ANTI-LOCK BRAKING SYSTEM (ABS) WITH ELECTRONIC BRAKE FORCE DISTRIBUTION (EBD)
- 14-INCH STEEL WHEELS WITH FULL COVERS AND P185/65HR TIRES
- ADVANCED DUAL FRONT AIRBAGS WITH OCCUPANT CLASSIFICATION SYSTEM (OCS)
- FRONT SEAT-MOUNTED SIDE-IMPACT AIRBAG
- FRONT AND REAR ROOF-MOUNTED SIDE-CURTAIN AIRBAGS
- 172-WATT AM/FM/CD SIX-SPEAKER AUDIO SYSTEM WITH EQUALIZER
- BODYCOLOR BUMPERS, BODYSIDE MOLDING, MIRRORS AND DOOR HANDLES
- TINTED GLASS WITH WINDSHIELD SUNSHADE BAND
- VARIABLE INTERMITTENT WINDSHIELD WIPERS
- 60/40 SPLIT FOLD-DOWN REAR SEATBACK
- SEATBACK POCKETS
- TACHOMETER
- 8-WAY ADJUSTABLE DRIVER SEAT WITH ARMREST
- DUAL FRONT CUPHOLDERS
- REAR CENTER ARMREST WITH CUPHOLDERS
- ADJUSTABLE HEAD RESTRAINTS FOR ALL SEATING POSITIONS
- TILT STEERING WHEEL
- DRIVER AND PASSENGER ILLUMINATED VANITY MIRRORS WITH COVERS

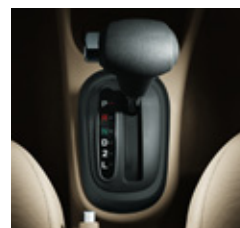
OPTIONAL EQUIPMENT

You should always use genuine Hyundai parts and accessories, which meet strict standards for quality and durability.



Air Conditioning

When you're warm under the collar, there's no better way to keep your cool than with the Accent's available air-conditioning system, complete with an air-recirculation feature.



Automatic Transmission

For smooth, effortless driving, the choice is automatic: Sit back and enjoy the ease of the optional 4-speed automatic transmission with overdrive and lock-up torque converter.

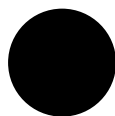
EXTERIOR COLORS



SAND BEIGE
BEIGE INTERIOR



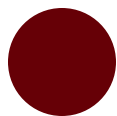
NORDIC WHITE
BEIGE OR
GRAY INTERIOR



EBONY BLACK
BEIGE OR
GRAY INTERIOR



CHARCOAL GRAY
GRAY INTERIOR



WINE RED
BEIGE OR GRAY
INTERIOR



ICE BLUE
BEIGE INTERIOR

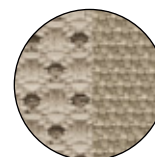


PLATINUM SILVER
GRAY INTERIOR

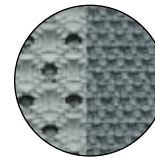


DARK SAPPHIRE BLUE
GRAY INTERIOR

INTERIOR COLORS



GLS BEIGE CLOTH



GLS GRAY CLOTH