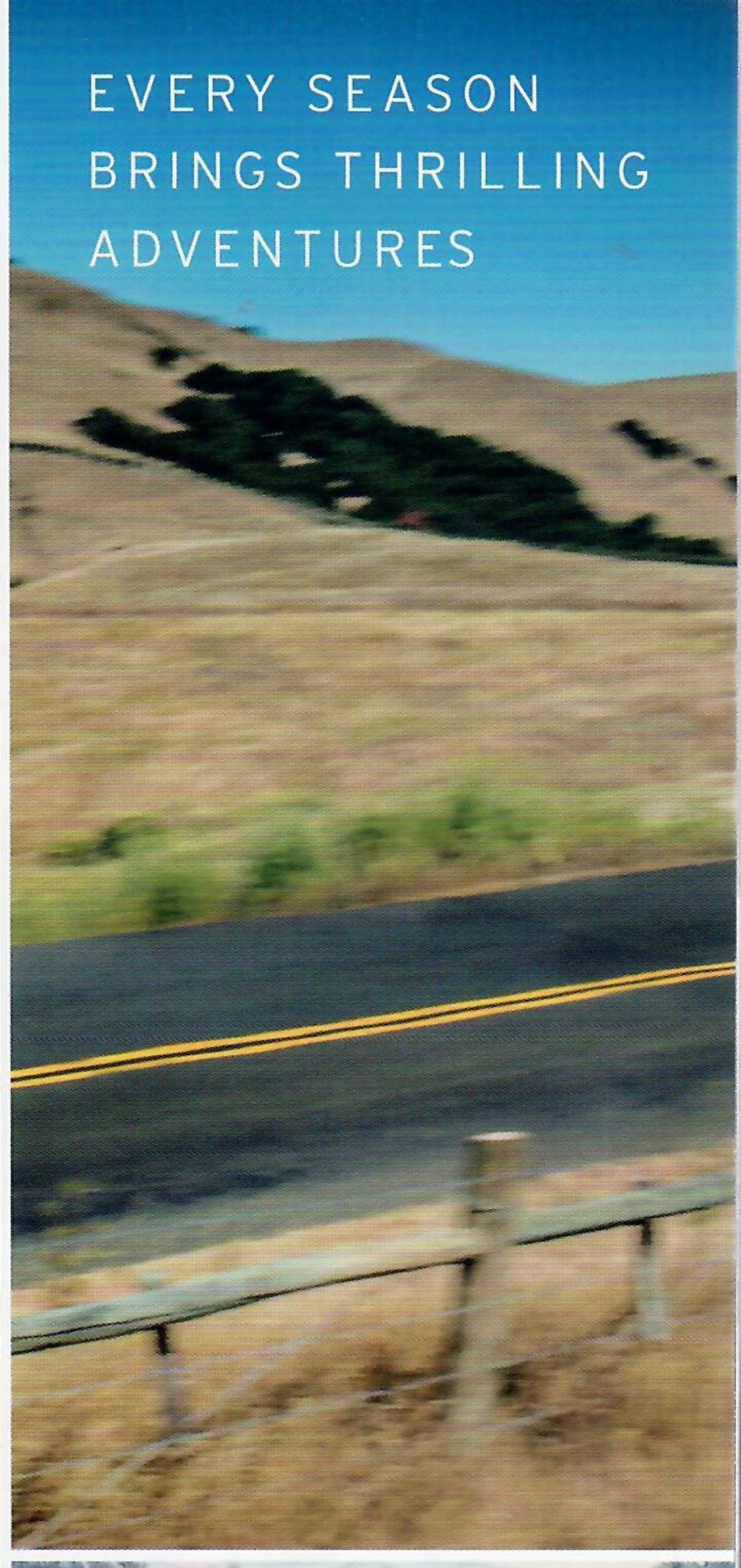
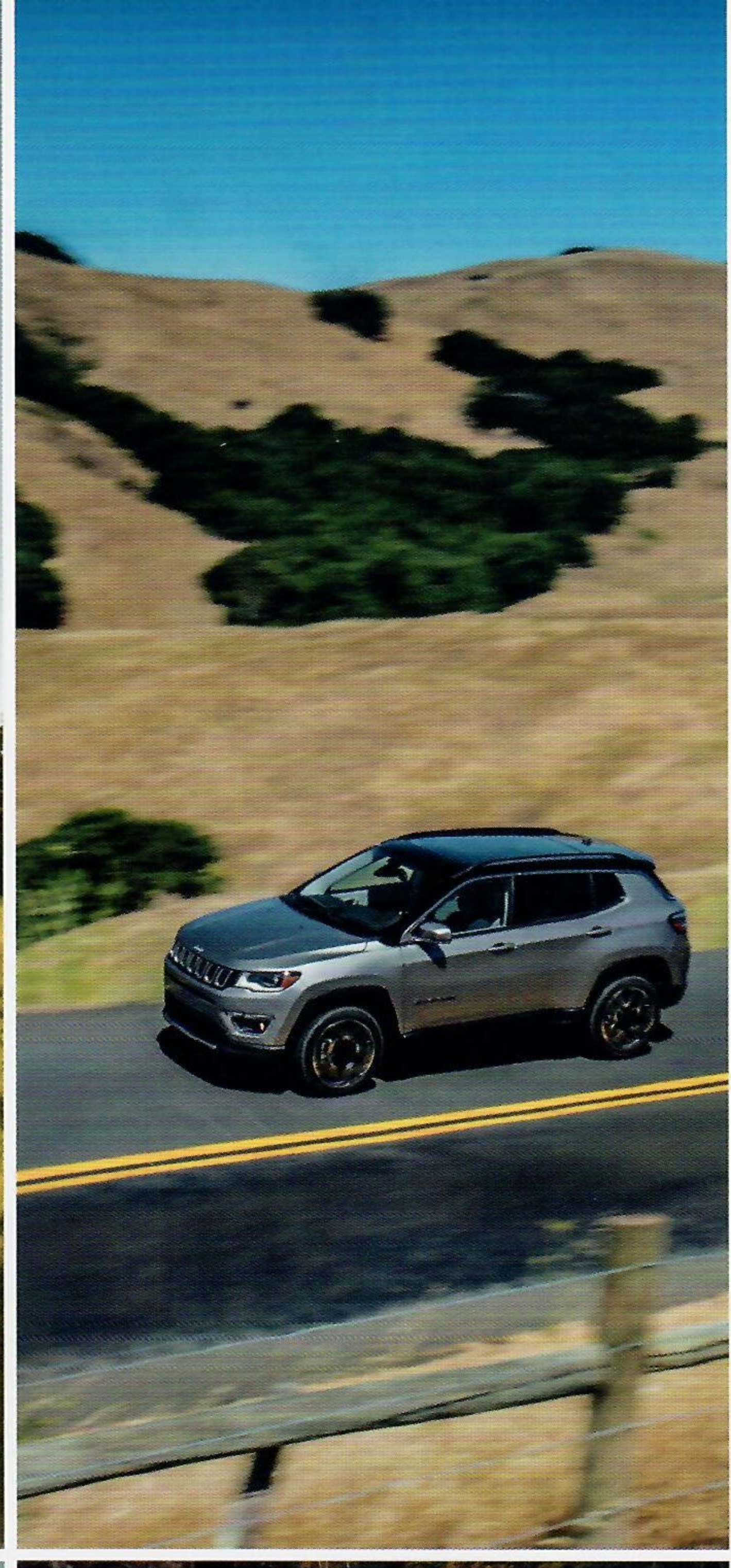




Jeep

2017

**ALL-NEW JEEP[®] COMPASS • GRAND CHEROKEE • CHEROKEE
RENEGADE[®] • WRANGLER • WRANGLER UNLIMITED**



EVERY SEASON
BRINGS THRILLING
ADVENTURES



ANSWER THE CALL TO FREEDOM



Renegade® Trailhawk®, All-New Compass Limited,
Cherokee Limited, Grand Cherokee Summit® and Wrangler Unlimited Rubicon®

LOST IS THE NEW FOUND

THE ALL-NEW 2017 JEEP® COMPASS PRESENTS A CAPTIVATING PERSPECTIVE ON AUTHENTIC CAPABILITY. WITH ITS HEAD-TURNING DESIGN, RIGHT-SIZED REFINEMENT AND INTUITIVE TECHNOLOGY, COMPASS TRAVELS ITS OWN DISTINCTIVE PATH. WHERE CAN YOU GO FROM HERE?

THE ANSWER IS SIMPLE: EVERYWHERE.



ALL-NEW COMPASS LIMITED
Top right: Compass Trailhawk® Bottom right: Compass Limited



ALL-NEW COMPASS LIMITED
 Top left: Compass Limited leather-trimmed interior
 Top right: Dual-Pane Panoramic Power Sunroof

2017 ALL-NEW JEEP COMPASS

POWERTRAINS

2.4L MultiAir® I-4 engine with 6-speed manual transaxle, 180 horsepower	• / • / •
2.4L MultiAir I-4 engine with Engine Stop / Start (ESS) / technology and 6-speed automatic transaxle with AutoStick, 180 horsepower	0 / • / •
2.4L MultiAir I-4 engine with ESS technology and 9-speed automatic transaxle with AutoStick (4x4 models), 180 horsepower	• / 0 / •

CAPABILITY

4-Wheel-Drive (4WD) System — With disconnecting rear axle	• • •
— Jeep Active Drive — Full-time 4x4 system (4x4 models only)	• • •
— Jeep Active Drive Low — Full-time 4x4 system with low range, 20:1 crawl ratio	• • •
Selec-Terrain® — Center-stack dial with 5 traction control settings: Auto, Snow, Sand, Mud and, exclusive for Trailhawk, Rock mode with Hill Descent Control (4x4 models only)	• • • •

Trail Rated® Capability — Includes Jeep Active Drive Low mode with 20:1 crawl ratio, 1-inch increased height, unique front and rear fascia, unique 17-inch wheels and all-season on/off-road tires, skid plates, off-road suspension, front and rear tow hooks, signature Red accents and Trail Rated badge

SAFETY AND SECURITY

Air Bags ^{1*} (7 total) — Advanced multistage driver and front-passenger, supplemental front and rear side-curtain, supplemental front-seat-mounted side and driver inflatable knee bolster	• • • •
Blind Spot Monitoring (BSM) ² and Rear Cross-Path Detection ³ System	0 0 0
Brakes — Antilock 4-wheel disc with Electric Park Brake and Rain Brake Support	• • • •
Electronic Stability Control (ESC) ⁴ and Electronic Roll Mitigation	• • • •
Front-Seat Active Headrests ⁵	• • • •
Full-Speed Forward Collision Warning with Active Braking (FSFCW+) ⁶ including Advanced Brake Assist	0 0 0
Hill Start Assist	• • • •
LaneSense® Lane Departure Warning with Lane Keep Assist (LDW+) ⁷	0 0 0
ParkSense® Rear Park Assist ³	0 0 0 0
ParkView® Rear Back-Up Camera ³ with Active Grid Lines	• • • •
Remote Keyless Entry with Push-button Start	• • • •
Passive Entry with Push-button Start	• • • •
Remote Start System	0 0 0 •
INTERIOR	
9-speaker Premium Sound System with Subwoofer	0 0 0
Ambient LED Lighting	• • • •
Auto-dimming Rearview Mirror	0 0 •
Driver Information Display — 3.5-inch B&W or 7-inch full-color display	• • • •

*A note about this brochure: all disclaimers and disclosures can be found on the back cover.

SPORT 4x2 / 4x4
 LATITUDE 4x2 / 4x4
 TRAILHAWK
 LIMITED 4x4

• = Included
 0 = Optional
 – = Not available

INTERIOR continued

Dual-Zone Automatic Temperature Control (ATC), including Humidity Sensor and Premium Air Filter	0 • •
Height-adjustable Load Floor — 1-, 2- or 3-position based on optional tire size	• • •
Leather-wrapped Steering Wheel — Includes wheel-mounted audio and cruise controls; heated feature standard or optional based on trim level	• • • •
Media Hub — Located in center stack, includes USB port and auxiliary input jack; 2nd USB port on back of center console; electronics storage behind shifter	• • • •
Seating — Unique premium cloth with accent stitching	• • • •
— Premium fabric trim with unique cloth and accent stitching	• • • •
— Luxury leather trim with Ombre mesh cloth and accent stitching with embroidered Trailhawk logo	• • • •
— Luxury perforated leather trim with accent stitching and embroidered Trailhawk logo	0 • • •
— Luxury perforated leather trim with accent stitching and embossed Jeep logo	• • • •
— Power 8-way driver seat with power 4-way lumbar adjuster and manual 6-way passenger seat	0 0 • •
— Heated front seats	0 0 0 •
— Rear 60/40 split-folding seats and center armrest with cup holders	• • • •
Integrated Voice Command ⁸ with Bluetooth ⁹ — Includes Bluetooth streaming audio	• • • •
SiriusXM [®] Guardian ⁹ — Includes 1-year trial subscription	0 0 0
SiriusXM Satellite Radio ⁹ — Includes 1-year trial subscription	0 0 • •
SiriusXM Traffic Plus ⁹ / Travel Link ⁹ — Includes 5-year trial subscription	0 0 0
Apple CarPlay™ and Android Auto™	0 • • •
Uconnect [®] 5.0 — AM / FM / touchscreen display / Bluetooth	• • • •
Uconnect 7.0 — AM / FM / touchscreen display / Bluetooth	0 • • •
Uconnect 8.4 — AM / FM / touchscreen display / Bluetooth	• • • •
Uconnect 8.4 NAV — AM / FM / touchscreen display / Bluetooth / HD radio / Navigation	0 0 0

EXTERIOR

Black Painted Roof	0 • •
Hood Decal (Black)	• • • •
Lighting — Front fog and cornering lamps	• • • •
— Automatic quad-halogen headlamps (automatic not on Sport models)	• • • •
— High Intensity Discharge (HID) headlamps (with signature LED lamp on Limited models)	0 0 0
— Auto High-Beam Headlamp Control	0 0 0
— LED taillamps	• • • •
Mirrors — Power adjusting, heated manual-folding in Black, body-color or Neutral Gray; turn signals on Trailhawk and Limited	• • • •
Power Liftgate	0 0 0
Sunroof — Dual-pane panoramic power	0 0 0

SPORT
 LATITUDE
 TRAILHAWK
 LIMITED 4x4



GRAND CHEROKEE SUMMIT® PLATINUM SERIES GROUP
 Lower left: All-new Grand Cherokee Trailhawk®
 Lower right: Grand Cherokee Summit Signature Leather-wrapped Interior Package



2017 JEEP® GRAND CHEROKEE

POWERTRAINS

	LAREDO	LIMITED	TRAILHAWK	OVERLAND	GRAND CHEROKEE	SUMMIT	SRT
3.6L Pentastar® Variable Valve Timing (VVT) V6 engine with Stop / Start technology and 8-speed automatic transmission	•	•	•	•	•	•	•
5.7L V8 with Multi-Displacement System (MDS) and VVT engine with 8-speed automatic transmission, 360 horsepower (4x4 only)	0	0	0	0	0	0	0
3.0L EcoDiesel V6 engine with 8-speed automatic transmission, 240 horsepower	0	0	0	0	0	0	0
6.4L HEMI® V8 engine with Fuel Saver Technology with 8-speed automatic transmission	0	0	0	0	0	0	•

CAPABILITY

	LAREDO	LIMITED	TRAILHAWK	OVERLAND	GRAND CHEROKEE	SUMMIT	SRT
4-Wheel-Drive (4WD) System — Quadra-Trac I® full-time single-speed 4WD (4x4 models only)	•	•	•	•	•	•	•
— Quadra-Trac II® Active 4WD System includes 2-speed transfer case and Hill Descent Control (4x4 models only)	0	•	•	•	•	•	•
— Quadra-Drive® II 4WD System includes electronic limited-slip differential for rear axle and Hill Descent Control (4x4 models only; standard on Summit with V8 or V6 EcoDiesel)	0	•	0	0	0	0	•
— SRT Quadra-Trac® Active On-Demand 4WD System	0	0	0	0	0	0	•
Quadra-Lift® Air Suspension System	0	•	•	•	•	•	•
Selec-Speed® Control / Hill Ascent (4x4 models only)	0	•	0	0	0	0	0
Selec-Terrain® Traction Management System — Console dial with 5 traction control settings (4x4 models only)	0	•	•	•	•	•	•
Selec-Trac® System — 5 dynamic modes: Auto, Sport, Track, Snow and Tow with new Custom Mode button	0	•	•	•	•	•	•

SAFETY AND SECURITY

	LAREDO	LIMITED	TRAILHAWK	OVERLAND	GRAND CHEROKEE	SUMMIT	SRT
Adaptive Cruise Control with Stop (ACC Stop) ¹⁰	0	0	0	•	•	•	•
Air Bags ¹ — Advanced multistage driver and front-passenger (inflate with a force appropriate to the severity of the frontal or near-frontal impact), advanced side-curtain, advanced supplemental front-seat side and driver inflatable knee bolster	•	•	•	•	•	•	•
Blind Spot Monitoring (BSM) ² and Rear Cross-Path Detection ³	0	0	0	•	•	•	•
Electronic Stability Control (ESC) ⁴	•	•	•	•	•	•	•
Forward Collision Warning with Active Braking (FCW+) ⁵	0	0	0	•	•	•	•
Hill Start Assist	•	•	•	•	•	•	•
Keyless Enter 'n Go™	•	•	•	•	•	•	•
Parallel and Perpendicular Park Assist ³	0	0	0	•	•	•	•
ParkView® Rear Back-Up Camera ³ and ParkSense® Rear Park Assist System ³ with Brake Assist	•	•	•	•	•	•	•
Remote Start System	0	•	•	•	•	•	•
Security Alarm	0	•	•	•	•	•	•
Trailer Sway Control ⁴	•	•	•	•	•	•	•

• = Included
 0 = Optional

INTERIOR

	LAREDO	LIMITED	TRAILHAWK	OVERLAND	GRAND CHEROKEE	SUMMIT	SRT
Active Noise Cancellation (ANC)	•	•	•	•	•	•	•
Seating — Cloth	•	•	•	•	•	•	•
— Heated 2nd-row	0	•	•	•	•	•	•
— Heated front	0	•	•	•	•	•	•
— Leather-trimmed	0	•	•	•	•	•	•
— Leather-trimmed with suede inserts	0	•	•	•	•	•	•
— Manual adjuster	•	•	•	•	•	•	•
— Power 4-way driver / passenger lumbar adjuster	0	•	•	•	•	•	•
— Ventilated front-row	0	•	•	•	•	•	•
SiriusXM® Satellite Radio ⁹ — Includes 1-year trial subscription	0	•	•	•	•	•	•
SiriusXM Traffic ⁹ and SiriusXM Travel Link ⁹ — Includes 5-year trial subscriptions	0	•	•	•	•	•	•
Speakers — 6	•	•	•	•	•	•	•
— Alpine® Premium Audio System with 9 speakers including subwoofer	0	•	•	•	•	•	•
— Harman Kardon® 19 speakers and 825-watt high-performance audio system	0	•	•	•	•	•	•
Steering Wheel — Leather-wrapped	•	•	•	•	•	•	•
— Wood and leather-wrapped	0	•	•	•	•	•	•
— SRT leather-wrapped, flat-bottomed sport	0	•	•	•	•	•	•
— Heated	0	•	•	•	•	•	•
Sunroof — Power with express-open / close	0	0	•	•	•	•	•
— CommandView® Dual-Pane Panoramic	0	0	•	•	•	•	•
Uconnect® 5.0 — AM / FM / Bluetooth®	•	•	•	•	•	•	•
Uconnect 8.4 — AM / FM / Bluetooth / Access ¹¹	0	0	•	•	•	•	•
Uconnect 8.4 NAV — AM / FM / Bluetooth / Access ¹¹ / Navigation	0	0	•	•	•	•	•

EXTERIOR

	LAREDO	LIMITED	TRAILHAWK	OVERLAND	GRAND CHEROKEE	SUMMIT	SRT
Headlamp Washers	•	•	•	•	•	•	•
Hood — SRT exclusive with heat extractors	0	•	•	•	•	•	•
Hood Decal — Black	0	•	•	•	•	•	•
Liftgate — Power	0	•	•	•	•	•	•
Roof Molding — Black	•	•	•	•	•	•	•
Roof Rack — Neutral Gray	•	•	•	•	•	•	•
Roof Rails — Bright	0	•	•	•	•	•	•

2017 JEEP® CHEROKEE

POWERTRAINS

2.4L Tigershark® MultiAir® 2 I-4 engine with 9-speed automatic transmission, 184 horsepower

— 2.4L PZEV engine (CA Emission States only)

3.2L Pentastar® Variable Valve Timing (VVT) V6 engine with Stop / Start technology, 9-speed automatic transmission, 271 horsepower

CAPABILITY

4-Wheel-Drive (4WD) System — Jeep Active Drive I, single-speed 4WD

— Jeep Active Drive II, 2-speed 4WD

— Jeep Active Drive Lock, 2-speed 4WD with rear locker

Selec-Speed® Control / Hill Ascent (4x4 models only)

Selec-Terrain® Traction Management System — Floor dial with up to 5 traction control settings (4x4 models only)

Suspension — Normal-duty

— Off-road lifted (packaged with 4WD 9-speed transmission, Jeep Active Drive II / Jeep Active Drive Lock)

SAFETY AND SECURITY

Adaptive Cruise Control with Stop and Go (ACC+)¹⁰

Air Bags¹ (10 total) — Advanced multistage, driver and front-passenger, supplemental front-seat side, supplemental side-curtain front / rear, supplemental rear-seat side, and driver and passenger inflatable knee bolster

Blind Spot Monitoring² and Rear Cross-Path Detection³

Electronic Stability Control (ESC)⁴

Full-Speed Forward Collision Warning with Active Braking (FSFCW+)⁵

Keyless Enter 'n Go™ (passive entry / push-button start)

LaneSense® Lane Departure Warning with Lane Keep Assist (LDW+)⁷

Parallel and Perpendicular Park Assist System³

ParkSense® Rear Park Assist³

ParkView® Rear Back-Up Camera³

Power Outlet — 12-volt auxiliary in floor console bin

— 12-volt auxiliary in instrument-panel media center

— 12-volt in cargo area

Remote Start System

Trailer Sway Control⁴

INTERIOR

Dual-Zone Climate Control

Leather-wrapped Instrument Panel

Seating — Cloth

— Cloth / leather

— Front-passenger fold-flat with in-seat storage (in-seat storage not available with ventilated seats)

— Heated front

SPORT
LATTITUDE
TRAILHAWK
LIMITED
OVERLAND

• • • • •
0 0 0 0 0

• • • • •
0 0 0 0 0

• • • • •
0 0 0 0 0

• • • • •
• • • • •

• • • • •
• • • • •

• • • • •
• • • • •

• • • • •
• • • • •

• • • • •
• • • • •

• • • • •
• • • • •

• • • • •
• • • • •

• • • • •
• • • • •

• • • • •
• • • • •

• • • • •
• • • • •

• • • • •
• • • • •

• • • • •
• • • • •

• = Included
0 = Optional

INTERIOR continued

— Leather-trimmed

— Manual 6-way driver

— Manual 6-way passenger

— Power 8-way driver and power 4-way driver lumbar adjuster

— Power 8-way passenger seat with 4-way driver lumbar adjuster

— Second-row 60 / 40 fold and fore / aft adjuster

— Premium leather seats with ventilated front row

SiriusXM® Satellite Radio⁹ — Includes 1-year trial subscription

SiriusXM Traffic⁹ and SiriusXM Travel Link⁹ — Includes 5-year trial subscriptions

Speakers — 6

— Alpine® Premium Audio System with 9 speakers including subwoofer

Steering Wheel — Heated

— Wood accents

Sunroof — CommandView® Dual-Pane Panoramic

Uconnect® 5.0 — AM / FM / Bluetooth®

Uconnect 8.4 — AM / FM / Bluetooth / Access¹¹

Uconnect 8.4 NAV — AM / FM / Bluetooth / Access¹¹ / Navigation

EXTERIOR

Fascias — Unique body color with cladding

Grille — Chrome surround

— Accent-color surround

— Active grille shutters

Hood Decal — Matte Black

Liftgate — Power

Lighting — Fog lamps

— Bifunctional halogen projector headlamps

— Bi-xenon High Intensity Discharge (HID) headlamps

— Automatic headlamps

— Auto High-Beam Headlamp Control

Roof Rails — Bright

— Accent-color

— Black

Wheel Flares — Black

— Body-color

— Off-road

Wiper System — Front, rain-sensitive automatic feature

— Windshield wiper de-icer

SPORT
LATTITUDE
TRAILHAWK
LIMITED
OVERLAND

• • • • •
0 0 0 0 0

• • • • •
• • • • •

• • • • •
• • • • •

• • • • •
• • • • •

• • • • •
• • • • •

• • • • •
• • • • •

• • • • •
• • • • •

• • • • •
• • • • •

• • • • •
• • • • •

• • • • •
• • • • •

• • • • •
• • • • •

• • • • •
• • • • •

• • • • •
• • • • •

• • • • •
• • • • •

• • • • •
• • • • •



CHEROKEE OVERLAND®
Top left: Cherokee Overland
Top right: Cherokee Overland leather-trimmed interior

2017 JEEP® RENEGADE®

POWERTRAINS

	SPORT	LATITUDE	TRAILHAWK	LIMITED
1.4L MultiAir® Turbo I-4 engine with 6-speed manual transaxle, 160 horsepower	•	•		
2.4L Tigershark® I-4 engine with 9-speed automatic transaxle and AutoStick, 180 horsepower	0	0	•	•

CAPABILITY

4-Wheel-Drive (4WD) System with disconnecting rear axle	0	0	0	
— Jeep Active Drive — Full-time 4x4 system, 4x4 models				
— Jeep Active Drive Low — Full-time 4x4 system with low range, 20:1 crawl ratio				

Selec-Terrain® — Console dial with up to 5 traction control settings: Auto, Snow, Sand, Mud and, exclusive for Trailhawk, Rock mode with Hill Descent Control (4x4 models only)	0	0	•	0
---	---	---	---	---

Trail Rated® Capability — Includes Jeep Active Drive Low mode, 0.8-inch increased height, unique front and rear fascia, unique 17-inch wheels and All-Terrain tires, skid plates, front and rear tow hooks, signature Red accents and Trail Rated badge			•	
---	--	--	---	--

SAFETY AND SECURITY

Air Bags ¹ (7 total) — Advanced multistage driver and front-passenger, supplemental front and rear side-curtain, supplemental front-seat-mounted side and driver inflatable knee bolster	•	•	•	•
---	---	---	---	---

Blind Spot Monitoring (BSM) ² and Rear Cross-Path Detection ³	0	0	0	
---	---	---	---	--

Electronic Stability Control (ESC) ⁴ — Includes Electronic Roll Mitigation, All-Speed Traction Control, Advanced Brake Assist, antilock 4-wheel disc brakes (ABS) and Hill Start Assist	•	•	•	•
--	---	---	---	---

Full-Speed Forward Collision Warning with Active Braking (FSFCW+) ⁶	0		0	
--	---	--	---	--

Hill Descent Control			•	
----------------------	--	--	---	--

Keyless Go Push-Button Start	•	•	•	•
------------------------------	---	---	---	---

LaneSense® Lane Departure Warning with Lane Keep Assist (LDW+) ⁷	0		0	
---	---	--	---	--

ParkSense® Rear Park Assist ³	0		0	
--	---	--	---	--

ParkView® Rear Back-Up Camera ³ with Active Grid Lines	0	•	•	•
---	---	---	---	---

Passive Entry and Remote Start (requires 2.4L engine)	0	0	0	•
---	---	---	---	---

Security Alarm	0	0	0	0
----------------	---	---	---	---

Tire Pressure Monitoring Display	•	•	•	•
----------------------------------	---	---	---	---

Trailer Sway Control ⁴	•	•	•	•
-----------------------------------	---	---	---	---

INTERIOR

Cargo Floor — Height-adjustable	•	•	•	•
---------------------------------	---	---	---	---

Driver Information Display (DID) — 3.5-inch Thin Film Transistor (TFT), high-resolution Black and White	•	•	•	•
— 7-inch TFT, full-color LCD	0	•	•	•

Leather-wrapped Steering Wheel — Includes wheel-mounted audio and cruise controls; heated feature standard or optional based on trim level	•	•	•	•
--	---	---	---	---

• = Included
0 = Optional

INTERIOR continued

Media Hub — Includes USB port, auxiliary input jack and 12-volt power outlet	•	•	•	•
--	---	---	---	---

Seating — Deluxe cloth with mesh insert and accent stitching	•	•	•	•
--	---	---	---	---

— Deluxe cloth with unique topographic insert, accent stitching and embroidered Trailhawk logo in Ruby Red				
--	--	--	--	--

— Luxury leather-trimmed with accent stitching and embroidered Trailhawk logo in Ruby Red				0
---	--	--	--	---

— Luxury leather-trimmed with embossed Jeep grille and accent stitching				•
---	--	--	--	---

— 6-way manual driver with height adjuster and 4-way passenger adjuster	•	•	•	•
---	---	---	---	---

— 8-way power driver with 4-way power lumbar adjuster and manual 4-way passenger adjuster	0	0	•	•
---	---	---	---	---

— Front-passenger fold-forward	•	•	•	•
--------------------------------	---	---	---	---

— Heated front	0	0	•	•
----------------	---	---	---	---

— Rear 60/40 split-folding	•	•	•	•
----------------------------	---	---	---	---

— Rear 40/20 / 40 split-folding with pass-through	0	0	•	•
---	---	---	---	---

SiriusXM® Satellite Radio ⁹ — Includes 1-year trial subscription	0	•	•	•
---	---	---	---	---

SiriusXM Traffic ⁹ and SiriusXM Travel Link ⁹ — Includes 5-year trial subscriptions	0	0	0	0
---	---	---	---	---

Speakers — 4	•	•	•	•
--------------	---	---	---	---

— 6	0	•	•	•
-----	---	---	---	---

— BeatsAudio™ 9-speaker Premium Sound System with subwoofer	0	0	0	0
---	---	---	---	---

Radio 3.0 — AM / FM	•	•	•	•
---------------------	---	---	---	---

Uconnect® 5.0 — AM / FM / Bluetooth®	0	•	•	•
--------------------------------------	---	---	---	---

Uconnect 6.5 NAV — AM / FM / SiriusXM ⁹ / HD radio / Bluetooth / Navigation	0	0	0	0
--	---	---	---	---

Uconnect Access ¹¹ — Includes 1-year trial subscription	0	0	0	0
--	---	---	---	---

EXTERIOR

Cornering Front Fog Lamps	•	•	•	•
---------------------------	---	---	---	---

Auto High-Beam Headlamp Control	0		0	
---------------------------------	---	--	---	--

High Intensity Discharge (HID) Headlamps (late availability)	0	0	0	0
--	---	---	---	---

Hood Decal			•	
------------	--	--	---	--

Mirrors — Power adjustable, power heated in Black, body-color, Neutral Gray or Silver Metallic	0	•	•	•
--	---	---	---	---

Roof — Body-color	•	•	•	0
-------------------	---	---	---	---

— Black	•	•	•	•
---------	---	---	---	---

Sunroof — My Sky® manual / removable ¹² open-air roof system	0	0		
---	---	---	--	--

— My Sky power / removable ¹² open-air roof system				0
---	--	--	--	---

Rain-sensitive Windshield Wipers	0	•	•	•
----------------------------------	---	---	---	---

Windshield Wiper De-icer	0	0	•	•
--------------------------	---	---	---	---



RENEGADE® LATITUDE
Top left: Renegade Trailhawk®
Top right: Renegade Limited leather-trimmed interior



WRANGLER UNLIMITED SAHARA®
 Top left: Wrangler Rubicon® Hard Rock
 Top right: Wrangler Unlimited Sahara leather-trimmed interior

2017 JEEP® WRANGLER

POWERTRAINS

3.6L Pentastar® V6 SMPI engine with 5-speed automatic transmission, 285 horsepower

3.6L Pentastar V6 SMPI engine with 6-speed manual transmission, 285 horsepower

CAPABILITY

4-Wheel-Drive (4WD) System — Command-Trac® NV241 GI, manual, part-time, shift-on-the-fly transfer case

— Rock-Trac® NV241 or manual, part-time, shift-on-the-fly transfer case; 4:1 low-gear ratio

Axle — Dana® 30 solid front

— Dana 44 heavy-duty solid front

— Dana 44 heavy-duty solid rear

Axle Ratio — 3.21:1

— 3.73:1 (std. on Rubicon for 3.6L A5; opt. on all others)

— 4.10:1 (std. on Rubicon for 3.6L M6; opt. for 3.6L A5)

Cold Weather Package — Includes heated front seats, slush mats, Remote Start, Power Convenience Group and engine block heater

Differentials — Trac-Lok® limited-slip rear

— Tru-Lok® front and rear, electronic remote locking

Max Tow Package — Includes Class II hitch receiver, 4-pin adapter and 3.73:1 axle ratio (or 4.10:1, for Rubicon, if so equipped)

Rock Rails — Black painted steel, heavy-duty, protective

Sway Bar Disconnect — Electronically controlled, front

Trailer Tow Group — Includes Class II hitch receiver, 4-pin adapter

SAFETY AND SECURITY

Advanced Multistage Front Air Bags¹

Electronic Stability Control (ESC)⁴ — Includes Electronic Roll Mitigation, All-Speed Traction Control, antilock 4-wheel disc brakes (ABS) and Hill Start Assist

Hill Descent Control — Included with 5-speed automatic transmission

Supplemental Front-seat Air Bags¹

INTERIOR

115-volt Outlet — Powers household items, laptops (12-volt power outlet standard on all models)

Air Conditioning — Manual temperature controls

— Automatic temperature controls

WRANGLER			WRANGLER UNLIMITED			
SPORT	SAHARA	RUBICON	SPORT	SAHARA	RUBICON	RHD

• = Included
 0 = Optional

INTERIOR continued

Radio 130 — AM / FM / CD / MP3

Radio 430N — AM / FM / CD / DVD / MP3 / USB / Navigation

Remote Start System — Integrated key fob controls

Seating — Heated front; included with leather trim

— Leather-trimmed

— Rear; Fold and Tumble seatback, removable¹²

— Rear; split-folding with self-articulating outboard head restraints⁵

SiriusXM® Satellite Radio⁹ — Includes 1-year trial subscription

SiriusXM Travel Link⁹ — Includes 5-year trial subscription

Slush Mats — All-weather heavy-duty with dual retention points to keep in place

Speakers — 8

— Alpine® Premium Audio System with 9 speakers, including an all-weather subwoofer

Steering Wheel — Leather-wrapped

EXTERIOR

Body-color Accents in Front / Rear Bumpers

Fender Flares — Black, molded-in-color

— Body-color

Glass — Deep-tint sunscreen rear and quarter

Grille / Headlamps — Fine-Silver accent inserts

Half Doors — Removable¹² half-framed metal with plastic windows (requires soft top; N/A with power windows / doors)

Headlamps — Automatic headlamps

— Halogen headlamps

— LED reflector headlamps

Side Steps — Side diamond-plate surface pattern

Tops — Sunrider® Black folding Soft Top with sunroof feature

— Premium Black Sunrider Soft Top with sunroof feature

— Freedom Top® Black 3-piece modular hardtop with rear wiper / washer, rear defroster and Freedom Panel storage bag

— Body-color hardtop

— Dual Top Group, includes hardtop (Black or body-color) and premium soft top

WRANGLER			WRANGLER UNLIMITED			
SPORT	SAHARA	RUBICON	SPORT	SAHARA	RUBICON	RHD



JEEP® GEAR Uncover an extensive line of fun that's been developed exclusively for the Jeep® Brand enthusiast. From authentic wearables to unique gifts, all items are as rugged and durable as your Jeep Brand vehicle. Express your true nature. Learn more at jeep.com/gear

GO MOBILE

Take an engaging, multimedia tour of your vehicle on your mobile device. Log on to the jeep.com mobile site for a comprehensive, at-a-glance review of what you need to know about your Jeep Brand vehicle. Experience visual and interactive demonstrations of the entire lineup, gaining access to product information at your fingertips, wherever you go.

5 YEAR / 60,000 MILE
POWERTRAIN LIMITED WARRANTY

AUTOMOBILITY
PROGRAM
CHRYSLER | JEEP | DODGE | RAM

SiriusXM
SATELLITE RADIO



Uconnect

JEEP® SOCIAL ADVENTURES



Expand your horizons to include authentic and active Jeep® Brand online communities. Post stories, share photos, watch videos and get the latest news from Jeep Brand gearheads and engineers. Fellow Jeep Brand enthusiasts are waiting to hear from you on Facebook (facebook.com/Jeep), Twitter (twitter.com/Jeep), Google+ (plus.google.com/+Jeep), Instagram (instagram.com/Jeepofficial), Pinterest (pinterest.com/Jeep) and YouTube (youtube.com/TheJeepChannel). Tune in, turn us on and get out into the virtual world where thrilling adventures are happening every single day.

JEEP® WAVE



It's the universal greeting all Jeep Brand vehicle owners know, and now it's the name of a new and exclusive owners' benefits program. With your enrolled Jeep Brand vehicle, you'll enjoy access to a dedicated 24 / 7 exclusive Jeep Brand vehicle owner support hotline, complimentary maintenance, first-day rental and trip-interruption coverage, VIP treatment at Jeep Brand events across the country and discounts on select brands through our shopping network. Complimentary two-year enrollment for select trim levels, with one-year purchase available for eligible models.



ALL-NEW COMPASS TRAILHAWK®

Jeep

(1) The Advanced Front Air Bags in this vehicle are certified to the new U.S. Federal regulations for Advanced Air Bags. Children 12 years old and younger should always ride buckled up in a rear seat. Infants in rear-facing child restraints should never ride in the front seat of a vehicle with a passenger front air bag. All occupants should always wear their lap and shoulder belts properly. (2) Always check visually for vehicles prior to changing lanes. (3) Always look before proceeding. An electronic drive aid is not a substitute for conscientious driving. Always be aware of your surroundings. (4) No system, no matter how sophisticated, can repeal the laws of physics or overcome careless driving actions. Performance is limited by available traction, which snow, ice and other conditions can affect. When the ESC warning lamp flashes, the driver needs to use less throttle and adapt speed and driving behavior to prevailing road conditions. Always drive carefully, consistent with conditions. Always wear your seat belt. (5) Always sit properly with the head restraint properly adjusted. Never place anything in front of the head restraint. (6) This system is not intended to avoid collisions on its own, nor can FCW detect every type of potential crash. The driver must remain aware of traffic conditions and be prepared to brake and steer to avoid potential collisions at all times. (7) This system is a driver convenience system, not a substitute for active driver involvement. The driver must remain aware of traffic conditions and maintain control of the vehicle. (8) Requires a mobile phone equipped with the Bluetooth Hands-Free Profile. Visit UconnectPhone.com for system and device compatibility. (9) SiriusXM audio and data services each require a subscription after the trial included with the new vehicle purchase, sold separately or as a package, by Sirius XM Radio Inc. **If you decide to continue service after your trial, the subscription plan you choose will automatically renew thereafter and you will be charged according to your chosen payment method at then-current rates.** Fees and taxes apply. To cancel, you must call SiriusXM at 1-866-635-2349. See SiriusXM Customer Agreement for complete terms at www.siriusxm.com. All fees and programming subject to change. (10) This system is a driver convenience system, not a substitute for active driver involvement. The driver must remain aware of traffic conditions and be prepared to use the brakes to avoid collisions. (11) Uconnect Access Via Mobile uses your smartphone's existing data plan to access information online. To use Via Mobile, you must have a compatible smartphone (with the Uconnect Access app installed and launched, visit UconnectPhone.com for compatibility) and you must fulfill all Uconnect Access registration and subscription requirements. Some applications must be configured on Mopar Owner Connect and may require an account. Via Mobile is included for five years and begins the day you take delivery of your vehicle. Register as soon as possible. Must be within the 48 contiguous United States, plus Alaska, and within active and usable cellular range. (12) Be sure to follow all instructions in Owner's Manual for removal of top and doors and lowering of windshield. Driving with doors off and windshield down is for off-road use only. (13) Transferable. See dealer for a copy of limited warranty. Includes towing to an authorized dealer.

©2016 FCA US LLC. All Rights Reserved. Chrysler, Dodge, Jeep, Ram, Mopar, SRT, the Jeep grille, Automobility Program, Cherokee, Command-Trac, CommandView, Compass, Freedom Top, Grand Cherokee, Grand Cherokee Summit, HEMI, LaneSense, Laredo, Latitude, the Mopar Owner Connect design, Mopar Vehicle Protection, My Sky, Overland, ParkSense, ParkView, Pentastar, Quadra-Drive, Quadra-Lift, Quadra-Trac, Quadra-Trac I, Quadra-Trac II, Renegade, Rock-Trac, Rubicon, Sahara, Selec-Speed, Selec-Terrain, Selec-Trac, Tigershark, Trailhawk, Trail Rated, Tru-Lok, Uconnect and Wrangler are registered trademarks and Jeep Active Drive I, Jeep Active Drive II, Jeep Active Drive Lock and Keyless Enter™ go are trademarks of FCA US LLC.

MultiAir is a registered trademark of C.R.F. Società Consortile per Azioni, used under license by FCA US LLC. Alpine and the Alpine logo are registered trademarks of Alpine Electronics, Inc. All rights reserved. Android, Google+ and YouTube are registered trademarks and Android Auto is a trademark of Google Inc. Bluetooth is a registered trademark of Bluetooth SIG, Inc. Dana and Trac-Lok are registered trademarks of Dana Corporation. Dr. Dre, Beats and the b logo are trademarks of Beats Electronics, LLC. CarPlay and iOS are registered trademarks of Apple Inc. Facebook is a registered trademark of Facebook, Inc. Harman Kardon is a registered trademark of Harman International Industries, Inc. iHeartRadio is a registered trademark of Clear Channel. Instagram is a registered trademark of Instagram, Inc. Pinterest is a registered trademark of Pinterest, Inc. Sirius, XM and all related marks and logos are trademarks of SiriusXM Radio Inc. Sunrider is a registered trademark of Bestop, Inc. The Twitter name, logo, Twitter T, Tweet and Twitter bird are service marks of Twitter, Inc. in the United States and other countries.

This brochure is a publication of FCA US LLC. All product illustrations and specifications are based upon current information at the time of publication approval. FCA US LLC reserves the right to make changes from time to time, without notice or obligation, in prices, specifications, colors and materials, and to change or discontinue models, which are considered necessary to the purpose of product improvement or for reasons of design and/or marketing.

Jeep is a registered trademark of FCA US LLC.

74-383-2755

800-925-jeep

jeep.com



The New Site For Car Brochures
DEZO'S GARAGE