

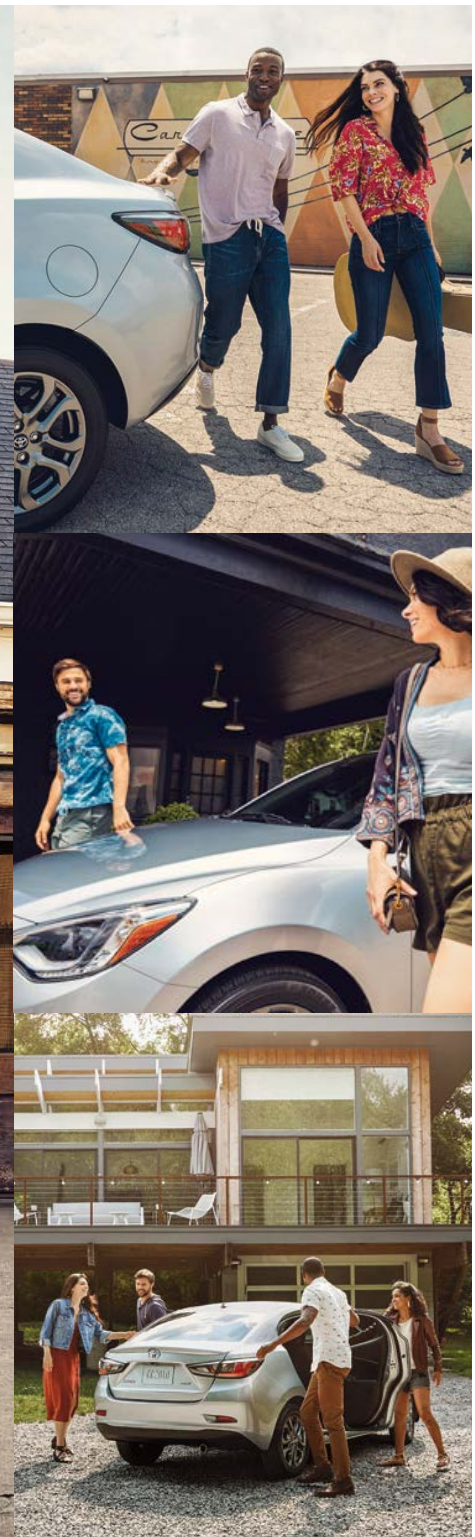
2020 Yaris



Ready, set, weekend.

When your weekends are as free as your spirit, the 2020 Toyota Yaris is your go-to ride. It sports the total package: fuel-efficient performance, cutting-edge tech and head-turning style. Gather the crew into its spacious cabin as you leave your day-to-day stress in the dust, and cruise on with ample safety technology. Luckily, the fun doesn't stop once Monday comes. Weekend vibes come standard with every ride.

LE shown in Pulse.



Fun times with fewer fill-ups.

Just because you want great fuel economy doesn't mean your ride has to be boring. With a lightweight body, agile handling and up to an EPA-estimated 40 mpg highway,²⁵ Yaris is total proof that good times can go a long, long way.



EFFICIENT PERFORMANCE

The direct-injection 1.5-liter engine on Yaris offers efficient performance with plenty of pep. When paired with the available 6-speed automatic transmission, it has an EPA-estimated 32 city/40 highway/35 combined mpg;²⁵ while the 6-speed manual transmission has an EPA-estimated 30 city/39 highway/34 combined mpg;²⁵ Either way, Yaris happily delivers the right combination of efficiency and fun.



GET INTO GEAR

Good times come in different forms — each just a shift away. The standard 6-speed manual transmission features quick, smooth gear changes. Or opt for the available 6-speed automatic with Sport Mode switch. Just give it a push and add a sportier feel to your drive.



SUSPENSION WITH PURPOSE

Find more excitement around every corner. Yaris features a MacPherson strut front suspension and torsion beam rear suspension that offer more than just good looks: They're tuned to deliver a smooth ride and agile handling.

FUEL EFFICIENCY



XLE shown in Chromium.

Smart tech for a smarter drive.

Yaris offers the right tech to inspire your day. The available Smart Key System¹⁶ and Push Button Start bring added convenience to every outing. Get going, and the standard 7-in. touch-screen multimedia system² becomes your new best friend. With SiriusXM^{®6} with 3-month All Access trial⁷, you can even discover a new theme song for each adventure.



AUTOMATIC CLIMATE CONTROL

Set it and forget it. With Yaris XLE's standard automatic climate control, it's easy to dial in the perfect cabin temperature. Just select your desired temp and Yaris will always keep the interior feeling just right.



STANDARD 7-IN. TOUCH-SCREEN MULTIMEDIA SYSTEM²

With the standard 7-in. touch-screen multimedia system that has both Apple CarPlay^{®8} compatibility and Android Auto^{™9}, Yaris will become your inseparable sidekick. Interact directly with the touch-sensitive screen² or opt for the control knob located between the front seats. It also features voice recognition¹² and Bluetooth^{®13} connectivity for hands-free access to your phone.²



TWO USB PORTS¹⁰ WITH MP3 CONNECTIVITY

Make every drive instantly better with your very own soundtrack. Just plug your compatible iPhone^{®26} or MP3 device into one of the two standard USB ports for easy access to your music library, or stream your music¹³ wirelessly through Bluetooth^{®13}. These handy ports also help keep your gadgets charged up and ready for whatever lies ahead.



XLE interior shown in Black leatherette trim.

EXTERIOR

The perfect choice for fun times and free spirits.

Whether you opt for the sporty L, the well-equipped LE or the premium XLE, every Yaris offers the ideal combination of efficiency, style, tech and safety.



Left to right: **XLE** shown in Chromium, **L** shown in Sapphire and **LE** shown in Pulse.

Ready to raise a few eyebrows.

Yaris cranks up the style with its streamlined silhouette and sporty race-inspired honeycomb-style grille. Integrated fog lights, standard on LE and XLE trims, perfectly accentuate the aggressive front end while adding extra visibility when conditions become less than ideal.



16-IN. ALLOY WHEELS

These distinctive 16-in. split-spoke alloy wheels, standard on LE and XLE trims, keep you rolling in style. The machined dark gunmetal finish adds an assertive look that helps you stay in tune with this sedan's sporty side.



AUTO ON/OFF LED HEADLIGHTS

Yaris features LED headlights that elevate its visibility and style. Standard on XLE, they shine brighter, use less energy and simply look cool. Plus, the handy auto on/off feature brings even more convenience. Available LED Daytime Running Lights (DRL) complete the sedan's modern look while helping you see and be seen.



HEATED POWER SIDE MIRRORS WITH LED TURN SIGNALS

Yaris LE and XLE feature LED turn signal indicators built into the outside mirrors. An integrated heating element also helps ensure that fog and ice won't obstruct your view. Since they're power-adjustable, fine-tuning the perfect angle is as simple as pushing a button.



This is where fun meets finesse.

Yaris brings plenty of roominess and amenities along for the ride. Standard features like contoured sport seats and steering wheel-mounted controls surround you in style and substance, while XLE adds an upscale look-and-feel with a host of leather-trimmed touches on the steering wheel, shift knob and parking brake.



LEATHERETTE-TRIM SEATS WITH CONTRAST STITCHING

Yaris XLE features upscale leatherette-trim seating surfaces with unique contrast stitching for a distinctive look. It's details like these that make Yaris one distinguished ride.



UPSCALE INTERIOR TRIM

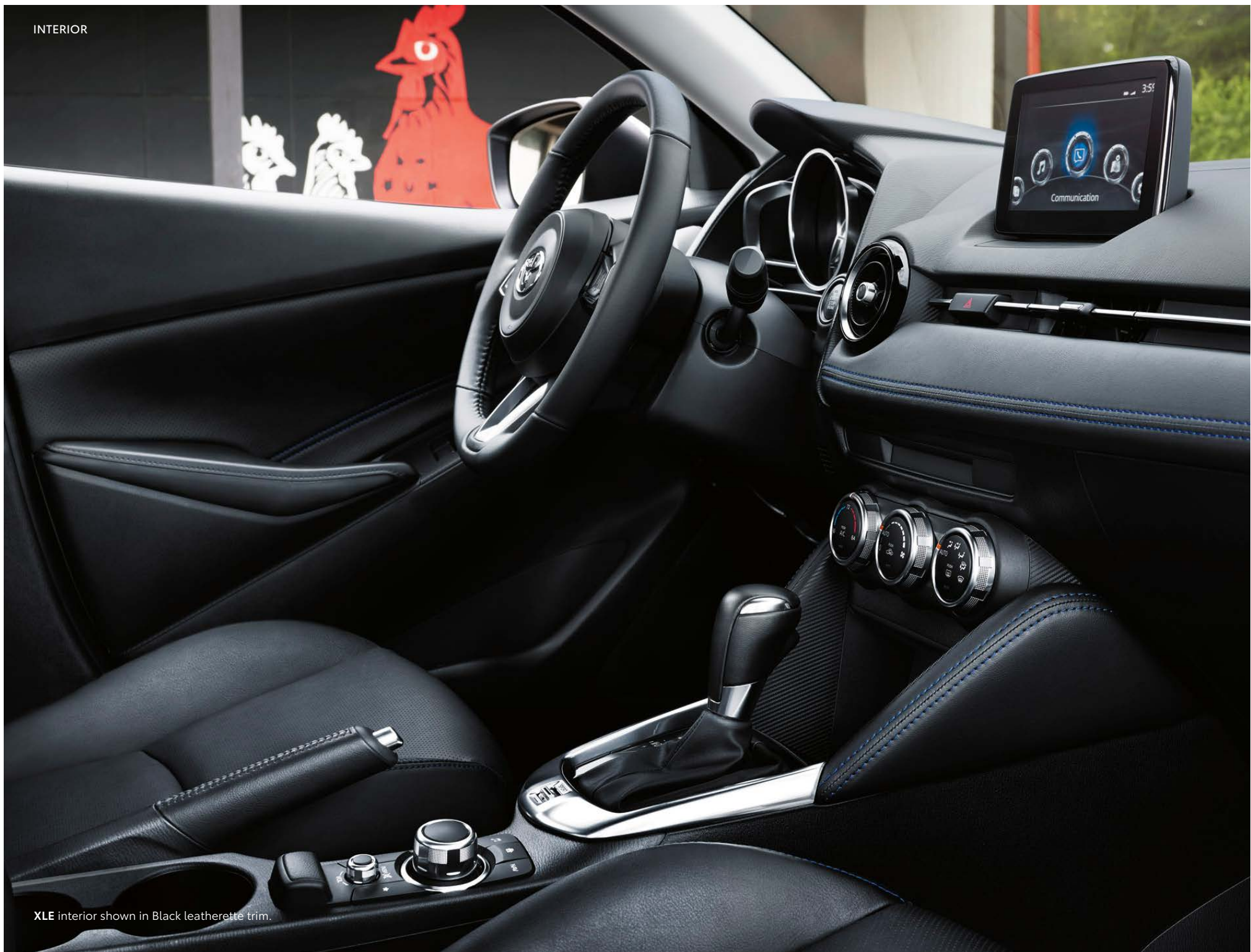
With piano-black accents that elevate the appearance of the center console and air vents, Yaris sets the standard on interior design. The finishing chrome touches offer a level of luxury you can enjoy every day.



60/40 SPLIT FOLD-DOWN REAR SEATS²⁴

Yaris will surprise you in a lot of ways — including how many of your favorite things you can fit inside. With its standard 60/40 split fold-down rear seats, you'll be packing more stuff in Yaris than you thought possible.

INTERIOR



XLE interior shown in Black leatherette trim.

RAIN-SENSING WINDSHIELD WIPERS

Don't let foul weather put a damper on your drive. The rain-sensing windshield wipers on Yaris XLE automatically adjust to match the amount of rain hitting the windshield and the speed of the car. Just set the wipers to "auto," and Yaris does the rest.

Committed to your safety.

Yaris packs a lot of safety into its compact design. Along with six standard airbags²¹ — including driver and front passenger airbags, seat-mounted side airbags and front/rear side curtain airbags — every Yaris incorporates a Low-Speed Pre-Collision System¹⁷ and Active Safety System as standard equipment.

LOW-SPEED PRE-COLLISION SYSTEM¹⁷

The standard Low-Speed Pre-Collision System scans the road ahead for potential vehicle collisions. If the system detects a potential frontal collision, an audio/visual alert and braking assistance are automatically activated. Should the driver not respond, this system may automatically apply the brakes.

ACTIVE SAFETY SYSTEM

To help keep you and your passengers safe, every Yaris comes standard with an advanced Active Safety System that includes Dynamic Stability Control (DSC);¹⁸ Traction Control System (TCS), Brake Assist (BA);¹⁹ Electronic Brake-force Distribution (EBD), Anti-lock Brake System (ABS) and Brake Override System (BOS).²⁰



SAFETY



XLE shown in Chromium.



L

Exterior Features

- Sporty front fascia with gloss-black mesh-pattern grille
- Halogen headlights
- Daytime Running Lights (DRL) integrated into headlights
- Color-keyed power outside mirrors
- 15-in. styled steel wheels with P185/65R15 tires
- Chrome-tipped exhaust
- Color-keyed roof-mounted shark-fin antenna

Interior Features

- 7-in. touch-screen display²
- Integrated backup camera¹⁵
- Fabric-trimmed sport front bucket seats
- 60/40 split fold-down rear seats²⁴
- Normal and Sport driving modes
- Tilt/telescopic 3-spoke steering wheel
- Multi-function in-key remote keyless entry system
- Two USB ports¹⁰

Safety

- Low-Speed Pre-Collision System¹⁷
- Active Safety System — includes Dynamic Stability Control (DSC);¹⁸ Traction Control System (TCS), Brake Assist (BA);¹⁹ Electronic Brake-force Distribution (EBD), Anti-lock Brake System (ABS) and Brake Override System (BOS)²⁰



LE

Adds to or replaces features offered on L

Exterior Features

- Fog lights
- Color-keyed heated power outside mirrors with turn signal indicators
- Rear spoiler
- 16-in. dark gray split-spoke alloy wheels with P185/60R16 tires

Interior Features

- Smart Key System¹⁶ with Push Button Start

Safety

- Low-Speed Pre-Collision System¹⁷
- Active Safety System — includes Dynamic Stability Control (DSC);¹⁸ Traction Control System (TCS), Brake Assist (BA);¹⁹ Electronic Brake-force Distribution (EBD), Anti-lock Brake System (ABS) and Brake Override System (BOS)²⁰



XLE

Adds to or replaces features offered on LE

Exterior Features

- LED auto on/off headlights
- LED Daytime Running Lights (DRL) integrated into headlights
- Rain-sensing variable intermittent windshield wipers

Interior Features

- Automatic climate control
- Leatherette-trimmed sport front bucket seats
- Leather-trimmed tilt/telescopic 3-spoke steering wheel

Safety

- Low-Speed Pre-Collision System¹⁷
- Active Safety System — includes Dynamic Stability Control (DSC);¹⁸ Traction Control System (TCS), Brake Assist (BA);¹⁹ Electronic Brake-force Distribution (EBD), Anti-lock Brake System (ABS) and Brake Override System (BOS)²⁰

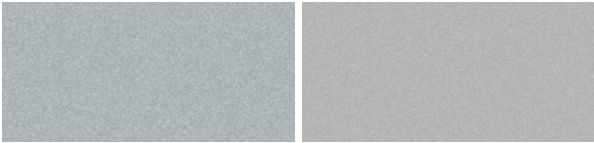
Color



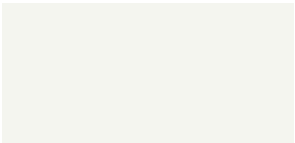
Stealth Sapphire



Pulse Graphite



Chromium Icicle



Frost

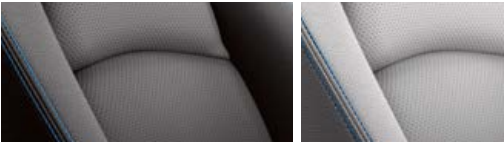
Trim



L fabric shown in Blue Black Also available in
Gray



LE fabric shown in Blue Black Also available in
Gray



XLE leatherette trim shown in Black Also available in
Gray

Wheels



L 15-in. styled steel wheel



LE and XLE 16-in. dark gray split-spoke alloy wheel

*Not all colors and trims available on all model grades. See dealer for details.

ACCESSORIES

A wide range of Genuine Toyota Accessories is available to help make driving your Yaris even more fun. Now your Yaris can reflect your personal style. There’s something for everyone. Some accessories may not be available in all regions of the country. For a complete list of accessories, go to toyota.com/yaris.

- Alloy wheel locks
Armrest
Cargo net²⁴
Cargo tote²⁴
- Carpet trunk mat
Coin holder/ashtray cup
Doorsill protectors
Emergency assistance kit
- First aid kit
Mudguards
Navigation system upgrade¹⁴
Rear bumper appliqué
- Rear spoiler
Universal tablet holder²⁷



Doorsill protectors



Cargo tote²⁴



Armrest



Cargo net²⁴

WARRANTIES

Every Toyota Car, Truck and SUV is built to exceptional standards. And that’s not idle boasting. We back it up with these Limited Warranty Coverages:

Basic: 36 months/36,000 miles (all components other than normal wear and maintenance items).

Powertrain: 60 months/60,000 miles (engine, transmission/transaxle, drive system, seatbelts and airbags).

Rust-Through: 60 months/unlimited miles (corrosion perforation of sheet metal).

Emissions: Coverages vary under Federal and California regulations. Refer to applicable *Warranty and Maintenance Guide* for details.

Accessories: For Genuine Toyota Accessories purchased at the time of the new vehicle purchase, the Toyota Accessory Warranty coverage is in effect for 36 months/36,000 miles from the vehicle’s in-service date, which is the same coverage as the Toyota New Vehicle Limited Warranty.

For Genuine Toyota Accessories purchased after the new vehicle purchase the coverage is 12 months, regardless of mileage, from the date the accessory was installed on the vehicle, or the remainder of any applicable new vehicle warranty, whichever provides greater coverage.

You may be eligible for transportation assistance if it’s necessary that your vehicle be kept overnight for repairs covered under warranty. Please see your authorized Toyota dealership for further details.

For complete details about Toyota’s warranties, please visit www.toyota.com, refer to the applicable *Warranty and Maintenance Guide* or see your Toyota dealer.

See numbered footnotes in Disclosures section.

FEATURES¹

EXTERIOR	L	LE	XLE		L	LE	XLE
Fog lights	—	S	S	Color-keyed outside door handles	S	S	S
Halogen headlights	S	S	—	Rear spoiler	—	S	S
LED auto on/off headlights	—	—	S	15-in. styled steel wheels with P185/65R15 tires	S	—	—
LED Daytime Running Lights (DRL) integrated into headlights	—	—	S	16-in. dark gray split-spoke alloy wheels with P185/60R16 tires	—	S	S
Daytime Running Lights (DRL) integrated into headlights	S	S	—	Variable intermittent windshield wipers	S	S	—
Rear combination taillights	S	S	S	Rain-sensing variable intermittent windshield wipers	—	—	S
Sporty front fascia with gloss-black mesh-pattern grille	S	S	S	Chrome-tipped exhaust	S	S	S
Color-keyed power outside mirrors	S	—	—	Integrated AM/FM antenna	S	S	S
Color-keyed heated power outside mirrors with LED turn signal indicators	—	S	S	Color-keyed roof-mounted shark-fin antenna	S	S	S
INTERIOR							
Air conditioning with dust and pollen filter	S	S	—	Leather-trimmed tilt/telescopic 3-spoke steering wheel with audio, cruise and phone controls	—	—	S
Automatic climate control with dust and pollen filter, and push-button controls	—	—	S	Instrumentation cluster with speedometer, tachometer, odometer, tripmeters, outside temperature, current/average fuel economy, cruising range and warning messages	S	S	S
7-in. touch-screen display ²	S	S	S	Metallic interior trim with chrome interior door handles	S	S	S
AM/FM/SAT HD Radio, ^{TM3} Stitcher and Aha Radio ^{TM4} applications ⁵	S	S	S	Power door locks	S	S	S
Six speakers	S	S	S	Multi-function in-key remote keyless entry system with lock, unlock, panic and trunk-release functions	S	—	—
SiriusXM ^{®6} with 3-month All Access trial ⁷	S	S	S	Smart Key System ¹⁶ on front doors and trunk with Push Button Start, remote keyless entry system with lock, unlock, panic and trunk-release functions	—	S	S
Apple CarPlay ^{®8} and Android Auto ^{TM9}	S	S	S	Power windows with driver-side one-touch up/down and jam protection	S	S	S
Two USB charge ports ¹⁰ with iPod ^{®11} connectivity	S	S	S	Rear window defogger with timer	S	S	S
Voice recognition, ¹² hands-free phone capability, phone book access and music streaming ¹³ via Bluetooth ^{®13} wireless technology	S	S	S	Day/night rearview mirror	S	S	S
Integrated Navigation ¹⁴ capable	S	S	S	Driver and front passenger sun visors with illuminated vanity mirrors	S	S	S
Remote multimedia Commander Knob	S	S	S	Center console with storage compartment	S	S	S
Integrated backup camera ¹⁵	S	S	S	Passenger-side glove compartment	S	S	S
Fabric-trimmed 6-way adjustable driver's seat; 4-way adjustable front passenger seat	S	S	—	Front- and rear-door storage pockets with sculpted bottle holders	S	S	S
Leatherette 6-way adjustable driver's seat; 4-way adjustable front passenger seat	—	—	S	One 12V auxiliary power outlet	S	S	S
Fabric-trimmed sport front bucket seats	—	—	—	Two front and two rear cup holders	S	S	S
Leatherette sport front bucket seats	—	—	S	Digital clock	S	S	S
60/40 split fold-down rear seat	S	S	S	Cruise control	S	S	S
Normal and Sport driving modes (automatic transmission only)	S	S	S				
Tilt/telescopic 3-spoke steering wheel with audio controls	S	S	—				
SAFETY AND CONVENIENCE							
Low-Speed Pre-Collision System ¹⁷	S	S	S	LATCH (Lower Anchors and Tethers for CHildren) includes lower anchors on outboard rear seats and tether anchors on all rear seats	S	S	S
Active Safety System — includes Dynamic Stability Control (DSC), ¹⁸ Traction Control System (TCS), Brake Assist (BA), ¹⁹ Electronic Brake-force Distribution (EBD), Anti-lock Brake System (ABS) and Brake Override System (BOS) ²⁰	S	S	S	Child-protector rear door locks	S	S	S
Six airbags ²¹ — includes driver and front passenger Advanced Airbag System, driver and front passenger seat-mounted side airbags, and front and rear side curtain airbags	S	S	S	Tire Pressure Monitor System (TPMS) ²²	S	S	S
3-point seatbelts for all seating positions; driver-side Emergency Locking Retractor (ELR) and Automatic/Emergency Locking Retractor (ALR/ELR) on all passenger belts	S	S	S	First aid kit	S	S	S
				Engine immobilizer ²³	S	S	S

SPECIFICATIONS

MECHANICAL AND PERFORMANCE	L	LE	XLE
ENGINE			
1.5-Liter 4-Cylinder DOHC 16-Valve with Dual Variable Valve Timing with intelligence (VVT-i); 106 hp @ 6000 rpm; 103 lb.-ft. @ 4000 rpm	S	S	S
Normal and Sport driving modes (automatic transmission only)	S	S	S
EMISSION RATING			
Ultra Low Emission Vehicle II (ULEV-II)	S	S	S
TRANSMISSION			
6-speed manual transmission	O	O	—
6-speed automatic transmission	O	O	S
DRIVETRAIN			
Front-Wheel Drive (FWD)	S	S	S
BODY CONSTRUCTION			
Unitized body	S	S	S
SUSPENSION			
Independent MacPherson strut front suspension with stabilizer bar; torsion beam rear suspension	S	S	S
STEERING			
Sport-tuned Electric Power Steering (EPS); power-assisted rack-and-pinion	S	S	S
Turning circle diameter, curb to curb (ft.)	32.2	32.2	32.2
Minimum turning radius (ft.)	16.1	16.1	16.1
BRAKES			
Power-assisted ventilated front disc brakes; 9-in. rear drum brakes	S	S	S
EXTERIOR DIMENSIONS (in.)			
Overall height	58.5	58.5	58.5
Overall width	66.7	66.7	66.7
Overall length	171.2	171.2	171.2
Wheelbase	101.2	101.2	101.2
Track (front/rear)	58.9/58.5	58.9/58.5	58.9/58.5
Ground clearance	5.5	5.5	5.5
INTERIOR DIMENSIONS (front/rear) (in.)			
Head room	38.2/36.8	38.2/36.8	38.2/36.8
Shoulder room	53.1/50.0	53.1/50.0	53.1/50.0
Leg room	41.9/34.4	41.9/34.4	41.9/34.4
Seating capacity	5	5	5
WEIGHTS/CAPACITIES			
CURB WEIGHT (LB.)			
Manual	2385	2401	—
Automatic	2432	2447	2482
EPA passenger volume (cu. ft.)	85.9	85.9	85.9
Cargo volume ²⁴ (cu. ft.)	13.49	13.49	13.49
Fuel tank (gal.)	11.6	11.6	11.6
TIRES			
Type — All-season	S	S	S
Spare — Temporary	S	S	S
MILEAGE ESTIMATES (mpg city/highway/combined)²⁵			
6-speed manual transmission	30/39/34	30/39/34	—
6-speed automatic transmission	32/40/35	32/40/35	32/40/35

See numbered footnotes in Disclosures section.

S = Standard **O** = Optional — = Not Available

CARS BUILT FOR THE WAY YOU LIVE

At Toyota, we build cars for how you live. From building advanced safety features designed to help prevent crashes to driving cross-country to understand how we can make your driving experience better, our work starts with understanding your needs. Building cars for how you live also means thinking about tomorrow — from fuel efficiency and environmental innovations, to things beyond cars, like a bicycle that you can control with your mind. And because what we learn building cars can help improve lives in other places, we do things like help communities rebuild their homes quickly after a disaster and work with soup kitchens to help them serve more people faster. Toyota. Built for how you live.

DISCLOSURES

1. Toyota strives to build vehicles to match customer interest and thus they typically are built with popular options and option packages. Not all options/packages are available separately and some may not be available in all regions of the country. If you would prefer a vehicle with no or different options, contact your dealer to check for current availability or the possibility of placing a special order. Color(s) depicted may vary based on multiple factors, including ambient lighting and the format in which it is being viewed (e.g., computer, mobile device or print). **2.** Concentrating on the road should always be your first priority while driving. **3.** HD Radio™ Technology manufactured under license from iBiquity Digital Corporation U.S. and Foreign Patents. HD Radio™ and the HD, HD Radio, and “Arc” logos are proprietary trademarks of iBiquity Digital Corp. **4.** Aha Radio™ is a trademark of Harman International Industries Inc. Apps, prices and services vary by phone carrier and capability and are subject to change at any time without notice. Subject to smartphone connectivity and capability. Data charges may apply. **5.** Always drive safely and obey traffic laws. Apps, prices and services vary by phone carrier and are subject to change at any time without notice. Subject to smartphone connectivity and capability. Data charges may apply. **6.** SiriusXM® audio services require a subscription sold separately by Sirius XM Radio Inc. If you decide to continue service after your trial, the subscription plan you choose will automatically renew thereafter and you will be charged according to your chosen payment method at then-current rates. Fees and taxes apply. To cancel, you must call SiriusXM at 1-866-635-2349. See SiriusXM Customer Agreement for complete terms at www.siriusxm.com. All fees and programming subject to change. Not all vehicles or devices are capable of receiving all services offered by SiriusXM. Current information and features may not be available in all locations, or on all receivers. ©2019 Sirius XM Radio Inc. SiriusXM and all related marks and logos are trademarks of Sirius XM Radio Inc. **7.** SiriusXM All Access trial length and service availability may vary by model, model year or trim. **8.** Apps and services are subject to change at any time without notice. Data charges may apply. Apple CarPlay® functionality requires a compatible iPhone® connected with an approved data cable into the USB media port. Apple CarPlay® is a registered trademark of Apple Inc. **9.** Vehicle user interface is a product of Google and its terms and privacy statement apply. To use Android Auto on your car display, you'll need an Android Auto compatible vehicle or aftermarket stereo, an Android phone running Android 5.0 or higher, and the Android Auto app. Google, Android and Android Auto are trademarks of Google LLC. **10.** May not be compatible with all mobile phones, MP3/WMA players and like models. **11.** iPod® and iPhone® are registered trademarks of Apple Inc. All rights reserved. **12.** Voice recognition capabilities vary by head unit. **13.** The Bluetooth® word mark and logos are registered trademarks owned by Bluetooth SIG, Inc., and any use of such marks by Toyota is under license. A compatible Bluetooth®-enabled phone must first be paired. Phone performance depends on software, coverage and carrier. **14.** Availability and accuracy of the information provided by the navigation system is dependent upon many factors. Use common sense when relying on information provided. Services and programming subject to change. Data charges may apply. Services not available in every city or roadway. See *Owner's Manual* for additional limitations and details. Map updates may be available for download; visit toyota.com/owners > Yaris > My Vehicle > Audio Multimedia for details. **15.** The backup camera does not provide a comprehensive view of the rear area of the vehicle and you should also look around the vehicle, using mirrors to confirm rearward clearance. Environmental conditions may limit effectiveness and view may become obscured. See *Owner's Manual* for additional limitations and details. **16.** The Smart Key System may interfere with some pacemakers or cardiac defibrillators. If you have one of these medical devices, please talk to your doctor to see if you should deactivate this system. **17.** Low-Speed Pre-Collision System operates at speeds of 18 mph or less. It is intended to assist a driver, but it is the driver's responsibility to be aware of the vehicle's surroundings. The system cannot prevent all collisions, and performance is dependent on road, weather, and vehicle conditions. See *Owner's Manual* for additional limitations and details. **18.** Dynamic Stability Control is an electronic system designed to help the driver maintain vehicle control under adverse conditions. It is not a substitute for safe driving practices. Factors including speed, road conditions and driver steering input can all affect whether DSC will be effective in preventing a loss of control. See *Owner's Manual* for additional limitations and details. **19.** Brake Assist is designed to help the driver take advantage of ABS and is not a substitute for safe driving practices. Braking effectiveness also depends on proper vehicle maintenance, tire and road conditions. See *Owner's Manual* for additional limitations and details. **20.** Brake Override System operates only in the event of certain simultaneous brake and accelerator pedal applications. When engaged, the system will reduce power to help the brakes stop the vehicle. Factors including speed, road conditions and driver input can impact stopping distance. Brake Override System is not a substitute for safe and attentive driving and does not guarantee instant stopping. See *Owner's Manual* for additional limitations and details. **21.** Airbag systems are Supplemental Restraint Systems and are designed to inflate only under certain conditions and in certain types of severe collisions. To decrease the risk of injury from an inflating airbag, always wear seatbelts and sit upright in the middle of the seat as far back as possible. Do not put objects in front of an airbag or around the seatback. Do not use a rearward-facing child seat in any front passenger seat. See *Owner's Manual* for additional limitations and details. **22.** The Tire Pressure Monitor System alerts the driver when tire pressure is critically low. For optimal tire wear and performance, tire pressure should be checked regularly with a gauge; do not rely solely on the monitor system. See *Owner's Manual* for additional limitations and details. **23.** The engine immobilizer is a state-of-the-art anti-theft system that is initiated when you insert your key into the ignition switch or bring a Smart Key fob into the vehicle. The engine will only start if the code in the transponder chip inside the key/fob matches the code in the vehicle's immobilizer. The transponder chip is embedded in the key/fob and can be costly to replace. If you lose a key or fob, your Toyota dealer can help or go to www.aloa.org to find a qualified locksmith in your area who can perform high-security key service. **24.** Cargo and load capacity limited by weight and distribution. Always properly secure cargo and cargo area. **25.** 2020 Yaris and Yaris Hatchback with automatic transmission EPA 32 city/40 highway/35 combined mpg estimates, and Yaris with manual transmission EPA 30 city/39 highway/34 combined mpg estimates. Actual mileage will vary. **26.** iPhone® is a registered trademark of Apple Inc. All rights reserved. **27.** The universal tablet holder is intended for passengers only. Drivers should always be sure to obey traffic regulations and maintain awareness of the road and traffic conditions at all times. Use of aftermarket accessories may pose an increased risk of injury to occupants in the event of an accident. Tablet sold separately.

Toyota strives to build vehicles to match customer interest and thus they typically are built with popular options and option packages. Not all options/packages are available separately and some may not be available in all regions of the country. See toyota.com for information about options/packages commonly available in your area. If you would prefer a vehicle without any or with different options, contact your dealer to check for current availability or the possibility of placing a special order. Color(s) depicted may vary based on multiple factors, including ambient lighting and the format in which it is being viewed (e.g., computer, mobile device or print).

Some vehicles are shown with available equipment. Seatbelts should be worn at all times. For details on vehicle specifications, standard features and available equipment in your area, contact your Toyota dealer. A vehicle with particular equipment may not be available at the dealership. Ask your Toyota dealer to help locate a specifically equipped vehicle.

All information presented herein is based on data available at the time of posting, is subject to change without notice and pertains specifically to mainland U.S.A. vehicles only. Vehicles shown may be prototypes and/or shown with options. Actual models may vary.



For Toyota Mobility program details, go to www.toyota.com/mobility or call the Toyota Customer Assistance Center at 1-800-331-4331