

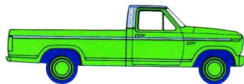


# LIGHT TRUCK EXTERIOR COLORS

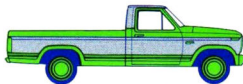
ECONOLINE • BRONCO • F-SERIES • COURIER

## TU-TONE DESIGNS FOR LIGHT TRUCKS

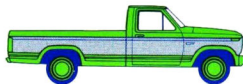
### F-SERIES



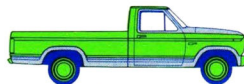
**REGULAR**



**COMBINATION**



**DELUXE**



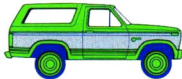
**VICTORIA**

Designs shown here in regular cab Styleside are also available in regular cab Flareside and Supercab.

### BRONCO



**REGULAR**

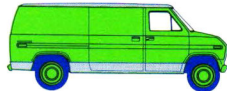


**DELUXE**

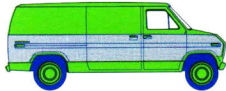


**VICTORIA**

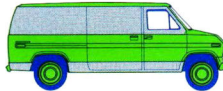
### ECONOLINE



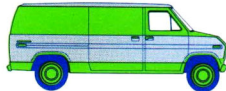
**COMBINATION**



**CENTER ACCENT**



**SPECIAL**



**DELUXE ACCENT**

Some designs are not available with certain trim packages and optional equipment.

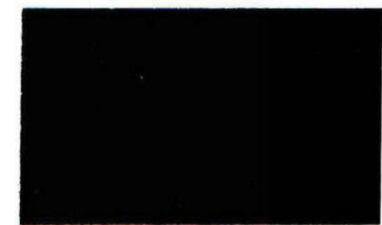
# 1980 Light Truck Exterior Color Selections

## Standard Colors

KEY: E—ECONOLINE

B—BRONCO

F—F-SERIES



1C-Raven Black

E-B-F



1G-Silver Metallic

E-B-F



1P-Medium Grey Metallic

B-F



2K-Candyapple Red

E-B-F



2L-Maroon

E-B-F



3B-Midnight Blue Metallic

E-B-F



3D-Dark Silver Blue Metallic

E-B-F



3F-Light Medium Blue

E



5Q-Dark Brown Metallic

E



5T-Light Caramel

B-F



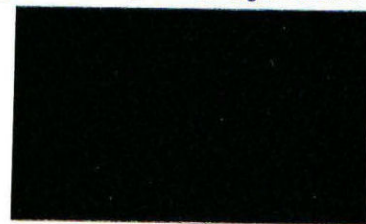
6D-Light Sand

E-B-F



6N-Bright Yellow

E-B



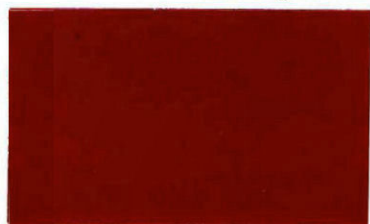
7M-Dark Pine Metallic

E-B-F



8A-Dark Chamois Metallic

B-F



8Q-Medium Copper

B



9A-Wimbledon White

E-B-F



34-Medium Blue

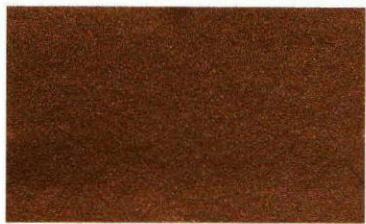
B-F



76-Light Medium Pine

E-B-F

## Glamour Colors OPTIONAL AT EXTRA COST.



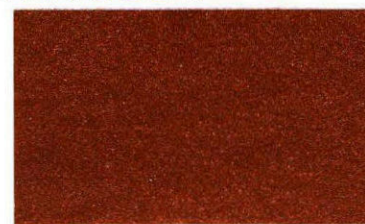
6B-Sand Glow

E-B-F



6F-Walnut Glow

E-B-F



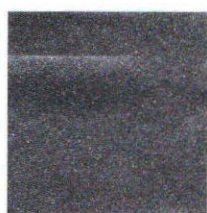
8W-Chamois Glow

B-F

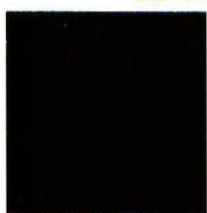
## 1980 Courier Colors



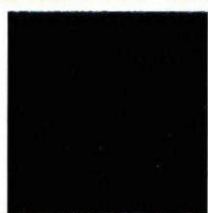
AX Light Blue



D6 Silver Metallic\*  
\* Optional At Extra Cost



NG Dark Brown



PZ Black



RH Dark Red



WR White



YQ Yellow

# *Ford Trucks*

The descriptions and specifications contained on this folder were in effect at the time the publication was approved for printing. Ford Motor Company, whose policy is one of continuous improvement, reserves the right to discontinue models at any time, or to change specifications or design without notice and without incurring obligation.

