



Exterior Color Selections

FORD LIGHT TRUCK

81

1981 TRUCK EXTERIOR COLOR SELECTIONS

STANDARD COLORS



Raven Black—1C
Pickup, Bronco, Econoline



Silver Metallic—1G
Pickup, Bronco, Econoline



Medium Grey Metallic—1P
Pickup, Bronco



Candyapple Red—2K
Pickup, Bronco, Econoline



Maroon—2L
Pickup, Bronco, Econoline



Midnight Blue Metallic—3B
Pickup, Bronco



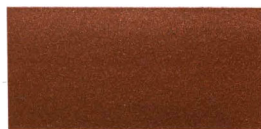
Dark Silver Blue Metallic—3D
Econoline



Dark Spruce Metallic—4J
Pickup, Bronco, Econoline



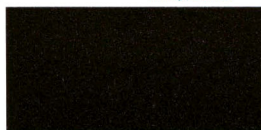
Fawn—89
Pickup, Bronco



Medium Caramel Metallic—5G
Pickup, Bronco, Econoline



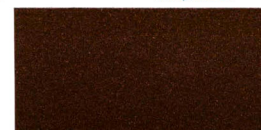
Light Caramel—5T
Pickup, Bronco



Dark Cocoa Metallic—5V
Bronco, Econoline



Dark Pine Metallic—7M
Econoline



Dark Chamais Metallic—8A
Pickup, Bronco, Econoline



Medium Blue—34
Pickup, Bronco, Econoline



Tan—6J
Pickup, Bronco



Antique Cream—62
Econoline

Wimbledon White—9A
Pickup, Bronco, Econoline

METALLIC GLOW COLORS—OPTIONAL AT EXTRA COST



Medium Blue Glow—3H
Pickup, Bronco, Econoline



Medium Spruce Glow—4N
Pickup, Bronco



Light Fawn Glow—5H
Econoline



Bittersweet Glow—8D
Bronco



Fawn Glow—55
Pickup, Bronco, Econoline

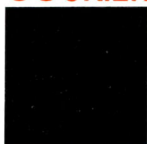
COURIER EXTERIOR COLORS



Light Blue AX



Dark Blue DE



Black PZ*



White WR



Dark Brown NG



Dark Red RH

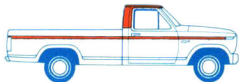


Yellow YQ

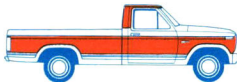
*Optional at Extra Cost

F-SERIES

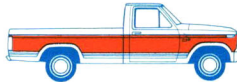
TU-TONE DESIGNS FOR LIGHT TRUCKS



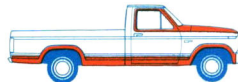
REGULAR



COMBINATION



DELUXE



VICTORIA

Regular Cab Styleside designs are also available in Super Cab models. Flareside and Dual Rear Wheel Styleside models are available in all of the above Tu-Tone combinations except Victoria.

BRONCO



REGULAR

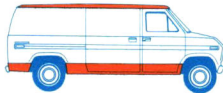


DELUXE

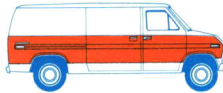


VICTORIA

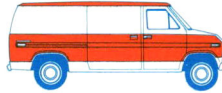
ECONOLINE



COMBINATION



CENTER ACCENT



DELUXE ACCENT

Some designs are not available with certain trim packages and optional equipment.

Ford Light Trucks

The descriptions and specifications contained on this folder were in effect at the time the publication was approved for printing. Ford Motor Company, whose policy is one of continuous improvement, reserves the right to discontinue models at any time, or to change specifications or design without notice and without incurring obligation.

