

1999 CHRYSLER SEBRING COUPE • SEBRING CONVERTIBLE

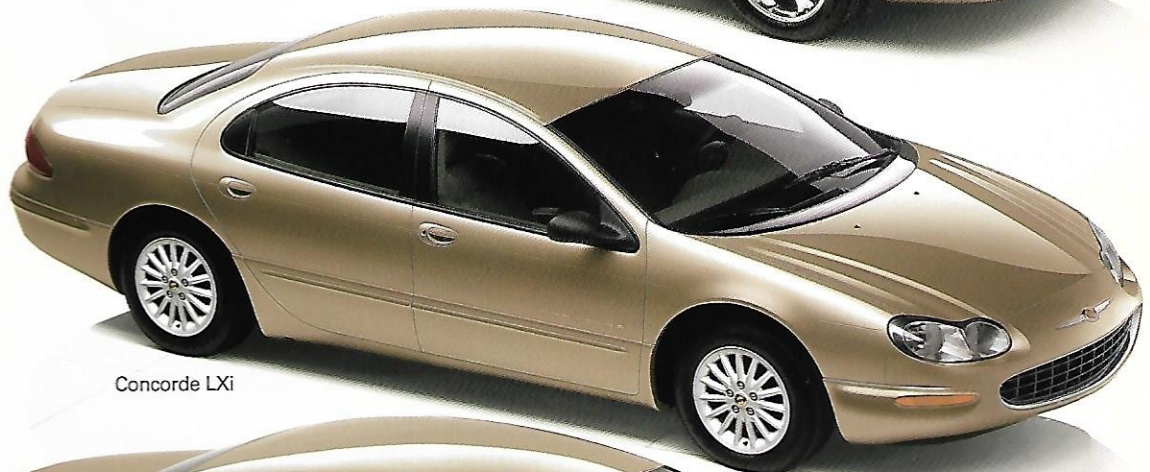




Town & Country Limited



Sebring Limited Convertible



Concorde LXi



Chrysler LHS

Great cars have always shared certain abiding characteristics: tasteful design; elegant amenities; masterful engineering; impeccable road manners, and the passion of their creators... attributes embraced by this family of 1999 Chryslers. The tastefully designed Concorde is the latest sculpted evolution of the original Concorde's acclaimed cab-forward



Sebring LXi Coupe



Cirrus LXi



Chrysler 300M

for improved engineering since it introduced luxury to the minivan nearly a decade ago. And Sebring (the convertible engineered *to be* a convertible) offers more than enough room and style to be anyone's year-round primary car. The roadworthy pedigree of the impeccably mannered 300M thunders back to the fabled 300 letter series of the '50s and '60s. And the road-running audacity of the spirited Sebring Coupe belies an engineering triumph of interior volume over exterior dimension. The 1999 Chryslers ... passionately conceived to overtake the ordinary. Designed, appointed, perfected, road-proven. Engineered to be Great Cars.



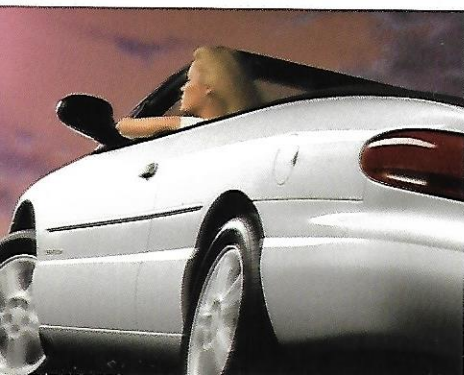
Since the printing, some information may have been updated. Please contact your dealer for the latest information. Some of the equipment shown or described throughout this advertisement is available at an additional cost.

THE 1999 CHRYSLER SEBRING CONVERTIBLE

is America's favorite convertible for very good reason—it's more than a summer special. Here's a brilliantly engineered, well-crafted, thoroughly stylish four-seater with **impeccable road manners** that provides driving exhilaration with a cutting-edge, 2.5-liter SOHC V6. Now, in a car that's enjoying practically unparalleled sales popularity, you expect that all the major components will be forcefully contemporary. Take the components that give Sebring its primary-car ride: a strong, rigid body; continuous steel rails; modified double-wishbone suspension—a perfect example of the thoughtfully engineered details that convertibles from other makers simply don't provide. Here's another example: drop-top driving on both Limited and JXi models is enhanced by a standard and uniquely tuned sound system that automatically equalizes the audio for optimum reproduction. You have to hear it to believe it. Conversely, during foul weather commutes, all Sebring Convertible tops are ruggedly constructed to provide double insulation against the elements. So, you bet! Chrysler has considerably crafted this convertible to provide the option of **open-to-the-sun touring**, and then combined it with all the practicality of a hardtop coupe.

For the second consecutive year, Sebring Convertible has won Strategic Vision's (1998) Total Quality Award™ for "Best Ownership Experience"—convertibles under \$30,000 (Co-winner for 1998).

Made of stain-resistant Twillfast II® cloth in Black or Sandalwood (or vinyl in Camel, Black or White), Sebring JXi's convertible top is double-insulated and features a fully trimmed headliner.





THE 1999 CHRYSLER SEBRING CONVERTIBLE

Sebring JXi Convertible in Inferno Red Tinted Clear Co



Sebring Limited. The ultimate-for-1999 Sebring Limited is available in an exclusive interior package, and is equipped with AutoStick[®], Low-Speed
Traction Control, four-wheel disc antilock brakes, 16-inch chrome-plated cast aluminum wheels and a distinctive black leather interior.



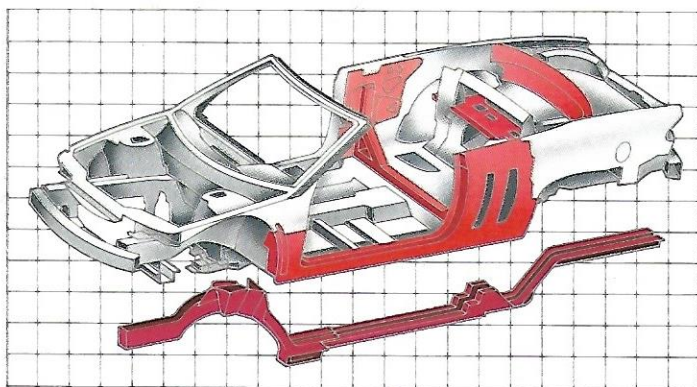
Sebring Limited in Champagne Pearl Co

YEAR-ROUND FREEDOM OF MOVEMENT.

From the sticky blacktop of hot summer days to the abundant potholes accompanying the freeze/thaw cycle of winter, Sebring Convertible is designed to perform admirably **in any season**. It's primary-car transportation for the primary people in your life. And thanks to its acclaimed **cab-forward** architecture, Sebring gives occupants something missing in most convertibles: freedom from squeeze. By minimizing space devoted to mechanicals, Chrysler engineers were able to maximize **accommodations for people** — especially for the couple in the rear. The same long wheelbase that enhances Sebring's styling also lengthens fore-to-aft interior room and widens the doorways — allowing passengers to enter and exit the rear seat with ease. Sebring's **spirited design**, refined engineering and remarkably stiff chassis endorse freedom of movement. Outside. Inside. **Year-round.**

The steering wheel is hand-somely sporty. While its rigid column imparts strength and a precise feel, the wheel itself is made of magnesium to reduce weight and minimize shake.





Sebring is engineered with 93 percent more torsional rigidity than its Chrysler convertible predecessor. Translation: a smoother, quieter ride. Sebring's

rigidity rests on rail-thru construction, two continuous underbody steel rails that run straight, front to rear, without interruption. The "goal post"

design positions a square-tube crossmember beneath the seats to anchor two high-strength uprights for critical side-impact resistance.



Sebring Limited
is highly inviting
inside, with
perforated,

leather-wrapped
gear shifter,
parking brake
handle and

Rose Zebrano
woodgrain accent
the unique look.
Note the chrome

floor mats,
electroluminescent
gauges in the
instrument cluster,

SEBRING CONVENIENCE



Shoulder belts retract into the seatback and adjust automatically for height.

IT'S SO EASY TO GET ALONG WITH SEBRING. Smoothly cruising down an unexplored road. Or just sitting pretty in JXi's leather-trimmed **six-way power** driver's seat. Or admiring the Strappazini door panels — named for the European one-piece construction process that produces a tighter, rattle-reducing fit as well as a soft, luxuriously textured surface. To further indulge your comfort, front shoulder belts **adjust automatically** to the best position for your height. Integrated into the structured seats, not stretched to side posts, the seat belts can't entangle embarking rear-seat guests. And when passengers tilt the front-passenger seat forward to leave, the seat easily slides ahead, clearing the exit path. Another comforting amenity: When the fresh air outside is too muggy, too wet or just too hot ... top-up **air conditioning** is standard. The top on JXi has standard Twillfast II® stain-resistant cloth. Vinyl is standard on JX. Designed as a formal fashion statement, these gracefully sloping tops are tightly engineered to seal out wind noise and weather.



Three devices (garage door, driveway gate, security lights, for example) can be activated by the available HomeLink® Universal Transmitter.



Leather-trimmed seating (shown in Agate) is standard on Sebring JXi Convertible.



Cloth interior is available on Sebring JX and JXi Convertible.



e color-keyed
e-piece boot is
able for easy
ndling and

stowage. Sebring
features a dressy,
flat-floor trunk
with 11.0 cubic

feet of luggage
capacity—enough
to hold two sets
of golf clubs.

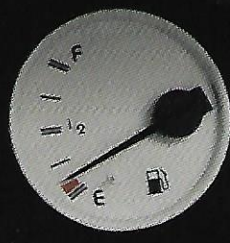


Sebring Limited leather-trimmed interior in Anateka





Sebring JXi Convertible in Bright White



ON
CRUISE

OFF

RES
ACCEL

CANCEL

SET
COAST

PULL
N





Analog dials
are impressive
assists to
driver command.

Powerful fog
lamps on JXi
are alluringly
deep set.



SEBRING'S SECOND SIDE: FASHIONABLE SHELTER.

A spacious, beautifully appointed, well-designed cabin results in comfort for driver and *all* passengers under *all* conditions. A very subtle touch is ergonomically engineered into the **quietly smooth** operation of switches: the power convertible top control is fingertip close at the front of the center console; for **security**, the power trunk release switch is inside the lockable console. The **console's courtesy lamp** also illuminates the rear floor area. A control on the dash heats the rear glass window defroster and both heated power foldaway mirrors. A day/night mirror that automatically dims the reflected glare of a following vehicle's lights is also available. And travelling companions appreciate **roomy rear seats** and the easy entry/exit.



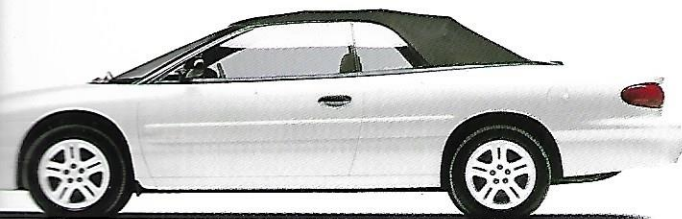
Reading lamps (top)
are integrated into
rearview mirror.
Convertible top
control (above left)
and trunk release
are easily accessed.





Sebring JXi Convertible in Forest Green Pearl Coat

SEBRING STRUCTURE



With primary-car durability and quietness, Sebring's double-insulated convertible top is designed for year-round comfort.

AN OPEN CONVERTIBLE WILL NEVER BE A SYMPHONY HALL,

but Chrysler acoustic engineers do provide

Sebring occupants freedom from din. First, by making the "hall" itself—the

interior of the convertible—as noise- and **vibration-free** as possible

(right) with structural strengthening engineering. The effect is

multiplied with Sebring's top-down audio equalization

system* part of Infinity Sound quality, standard on

JXi and Limited, that automatically maintains quality in

both the top-up and top-down environments. Infinity features large rear

speakers to provide **beefy basses**, and the door speakers are as large as

any available in passenger cars. Sound quality, however, can be no better

than the structure that contains it. Sebring was engineered **quiet**. To

maximize stiffness and minimize buzzes and squeaks, a rigid body structure

rests atop solid rail-thru construction. Structural adhesives bond metal

to reduce rattles. Foam baffles inside structural pillars **reduce noise**.

*Included with Infinity Speaker Systems.



Large six-by-nine-inch speakers surround occupants with sound.

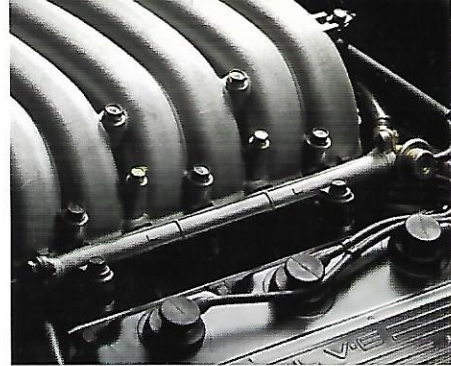


Top-down cruising is pleasant, due to efficient aerodynamics which deter passenger buffeting and slipstream noisiness.

SEBRING PERFORMANCE



Choose automatic or manual with AutoStick® transaxle included on Limited.



Responsive 2.5-liter V6 produces 168 hp of confidence-instilling power.

ENGINEERING INSTILLED SEBRING WITH IMPECCABLE

ROAD MANNERS.

But it is Sebring's engine that adds the backbone to Sebring's beauty. The 2.5-liter, single overhead cam V6* provides the high-combustion efficiency of four valves per cylinder and generates 168 horsepower at 5,800 rpm ... smoothly, quietly. In Sebring Limited, drivers can access the **AutoStick®** transaxle shifter which allows them to select the positive control of a **manual** transaxle or the smoothness of an **automatic**. Sebring's behavior on the open road is equal to the response of its power train. Meticulously engineered structural rigidity keeps the convertible's body staunchly upright on pretzel-bend roads. And a modified

double-wishbone suspension system adds supple agility in cornering maneuvers. That driving feel is maximized by Sebring's

speed-sensitive power steering system that pumps out full power assist at zero or low speeds (for a luxury-car-parking feel), then reduces power assist at highway speeds (for a sports-car-handling feel).

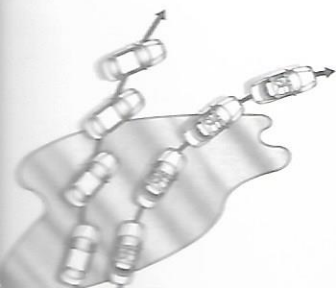
Responsive road performance is an important **active safety** feature, emphasizing accident avoidance capabilities.



Sebring's Sentry Key™ Engine Immobilizer cuts off fuel supply to thwart theft, and is standard on JXi, available on JX (as part of the Security Group).

Sebring Limited's Low-Speed Traction Control provides extra stability up to 35-mph on slick roads. Antilock brakes are standard on all models. See page 24 for details.

*Built by Mitsubishi Motors Corporation.



FEATURES/ACCESSORIES



FREEDOM'S JUST ANOTHER WORD FOR CHOOSING

A SEBRING MODEL WITH A SOUND SYSTEM that's

perfectly attuned to your audio preferences. The JX has a six-speaker

AM/FM stereo radio with full-logic cassette and changer controls (A). Standard

on Limited and available on JXi is a 150-watt AM stereo*/FM stereo

radio/cassette/CD combination (B). Standard on both is the Infinity sound

system that automatically maintains quality and crisp tune in a top-up

or top-down listening environment. Both JX and JXi have available

upgrades. **A six-disc CD changer** system mounted in the dash (upper

left, next page) is available on Limited (B). (It can also be dealer-installed

as a Mopar accessory.) Where the rubber meets the road, Sebring's stylish

wheel treatments accent the smart styling of this convertible

model. The 15-inch bolt-on wheel cover (E) is standard on Sebring JX. The

16-inch Sparkle Silver cast aluminum wheel (F) is available on Sebring JX

with the optional 16-inch Touring Group. With white exterior body color,

these wheels are also white. The 16-inch cast aluminum wheel (G) with gold

accents is standard on Sebring JXi, and is chrome-plated on Sebring Limited.



Sebring's wheel treatments are fashionable accents.

*Some AM stereo broadcasting may not be compatible with this radio.





CD Changer in the instrument panel stacks six discs.

UNDER THE STYLISH SHEET METAL, for the ultimate in precision, the 16-inch Touring Group that is standard on Sebring Convertible JXi is available on JX, augmenting the already capable fully independent suspension. Included are: 16-inch cast aluminum wheels, and P215/55R16BSW all-season touring tires, nicely tuned suspension components, European on-center-feel rack-and-pinion steering, and front and rear reduced-sway stabilizer bars. **CHRYSLER ACCESSORIES**

FROM MOPAR include a wide variety of useful, comfort and convenience-enhancing accessories designed to tune your Sebring Convertible to your specific requirements. **Electronic Vehicle Security (EVS II®)** is a remote entry system to operate door locks and alarm systems at a safe distance. **Molded Cargo Tray** (right) is fitted to the contours of Sebring Convertible's trunk and provides a surface texture to reduce the tumble of objects and/or luggage that may be stowed back there. See your Chrysler dealer for a complete listing of available Mopar Accessories.



SEBRING CONVERTIBLE STANDARD FEATURES

All Chrysler Sebring Convertibles include:

Air Bags⁽¹⁾ — Passenger and Next Generation driver

Air Conditioning — Manual temperature controls

Brakes — Power front disc/rear drum antilock

Console — Center, lockable with armrest, storage and rear courtesy lamp

Convertible Top — Power with glass rear window

Cup Holders — Front (2), integral in center console

Defroster — Electric rear window

Door Locks — Power, auto speed-sensitive

Instrument Cluster — Analog, with tachometer

Lighting

Exterior

— Headlamp-off time delay

Interior

— Illuminated entry

— Glove box and trunk

Map Pockets

— Front doors

— Front passenger seatback

Mirrors

Exterior

— Dual folding power, heated

Interior

— Dual illuminated covered visor vanity

Remote Keyless Entry — Controls for power door locks, trunk release and panic alarm

Seats

Front — Buckets with 6-way power driver's seat, reclining seatbacks and adjustable head restraints

Rear — Bench

Shoulder Belts — Automatic height-adjustable front

Speed Control — Electronic with steering wheel-mounted controls

Steering Column — Height-adjustable

Sun Visors — Dual

Suspension — Fully independent modified double-wishbone with front and rear stabilizer bars

Trunk Dressup — Flat-floor

Trunk Lid Release — Remote, power

Windows — Power with driver's one-touch-down feature

Wiper System — Windshield, two-speed with speed-sensitive intermittent mode

⁽¹⁾Next Generation air bag is certified to the Federal Regulations that allow less forceful air bags. Always use seat belts. Remember a backseat is the safest place for children.

FEATURES, OPTIONS AND PACKAGE GROUPS

POWER TRAIN AVAILABILITY		JX	JXi	Limited
Engines	Transaxles	B	D	G
2.5-liter SOHC 24-valve V6 ⁽¹⁾	4-speed automatic	26B	26D	
	4-speed AutoStick®			26G
All Season Group — Four-wheel disc brakes with antilock, Low-Speed Traction Control, Luxury Convenience Group, and AM stereo ⁽²⁾ /FM stereo radio with cassette, CD and 3-band graphic equalizer			O	
Brakes — Four-wheel disc antilock and Low-Speed Traction Control (included in All-Season Group)			P	●
Cold Weather Group — Engine block heater and battery heater		O	O	O
Floor Mats — Front and rear, carpeted		●	●	●
Lighting				
Exterior				
— Fog lamps			●	●
Interior				
— Front door courtesy			●	●
Luxury Convenience Group — Automatic electrochromic rearview day/night mirror and HomeLink® Universal Transmitter (included in All Season Group)			O/P	●
Mirrors				
Interior				
— Automatic dimming day/night rearview (included in Luxury Convenience Group)			P	●
Seats				
Fabric				
— Ultrahide™		●		
— Wanderer Leather trim			●	●
— Odyssey Cloth		O	O ⁽³⁾	
Security Group — Monitors door, ignition and trunk key cylinders, disables HomeLink and trunk release and includes Sentry Key™ Engine Immobilizer and Central Locking feature with power door locks		O	●	●
Sound System				
— AM/FM stereo radio with cassette, changer controls, 150-watt Infinity® Sound System and 6-speakers			●	
— AM stereo ⁽²⁾ /FM stereo radio with cassette, CD, 3-band graphic equalizer, 150-watt Infinity® Sound System and 6 speakers (included in All-Season Group)			O/P	●
— AM stereo ⁽²⁾ /FM stereo radio with cassette, CD, 3-band graphic equalizer and 6 speakers		O		
— AM/FM stereo radio with cassette, changer controls, in-dash 6-disc CD changer, 150-watt Infinity® Sound System and 6 speakers				O
— In-dash 6-disc CD changer			O	
Steering				



Inferno Red Tinted Clear Coat
Interior: Agate, Camel
Top: Black, Sandalwood, Camel



Forest Green Pearl Coat
Interior: Silver Fern, Camel, Agate
Top: Black, Sandalwood, Camel



Bright Platinum Metallic
Interior: Camel, Agate, Agate/Camel
Top: Black



Deep Cranberry Pearl Coat
Interior: Agate, Camel
Top: Black, Sandalwood, Camel



Light Cypress Green Pearl Coat
Interior: Silver Fern, Agate
Top: Black



Flame Red (JX model only)
Interior: Agate, Camel
Top: Black, Camel



Deep Slate Pearl Coat
Interior: Agate, Camel, Agate/Camel
Top: Black, Sandalwood, Camel



Deep Amethyst Pearl Coat
Interior: Agate, Camel
Top: Black, Sandalwood, Camel



Bright White
Interior: Agate, Silver Fern, Camel, Agate/White
Top: Bright White, Black, Sandalwood, Camel



Champagne Pearl Coat
Interior: Agate, Camel, Agate/Camel
Top: Black, Sandalwood, Camel

TOP COLORS⁽²⁾



Bright White Vinyl



Black Cloth

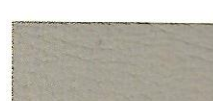


Sandalwood Cloth

FABRICS⁽³⁾



Camel
Ultrahide™



Silver Fern
Leather-trim



Agate Sport
Leather-trim
(Sebring Limited only)

⁽¹⁾Available interior/top color combinations are listed below exterior color samples. Sebring Limited available in Bright Platinum, Inferno Red, Forest Green, Deep Slate and Champagne exterior colors. ⁽²⁾Twillfast II™ cloth convertible top standard on JXi in Black and Sandalwood. Vinyl convertible top standard on JX and available on JXi in Bright White and Camel. (Cloth top not available on JX. Vinyl top not available on Limited) ⁽³⁾JX models are equipped with standard Ultrahide™ vinyl seating in Agate and Camel. JXi models are equipped with standard leather-trimmed seating in Agate, Silver Fern or Camel and Sebring Limited in Agate/Camel or Agate Sport. Odyssey cloth seating available on JX and JXi in Agate and Camel. Cloth seating not available on Sebring Limited.

	JX	JXi	Limited
	B	D	G
Suspension — Touring with tuned components (included in 16-inch Touring Group)	P	●	●
Tires			
— P205/65R15 BSW, all season	●		
— P215R16 BSW, all-season touring (included in 16-inch Touring Group)	P	●	●
16-Inch Touring Group — 16-inch cast-aluminum wheels, P215/55R16 all-season touring tires, touring suspension and firm-feel rack-and-pinion speed-sensitive steering	O		
Traction Control — Low-Speed (included in All-Season Group)		P	●
Transaxle — AutoStick® Driver-Interactive Shifter			P
Traveler's Display — Mini-trip computer		●	●
Wheels			
— 15" x 6" steel with bolt-on wheel covers	●		
— 16" x 6.5" cast-aluminum (included in 16-inch Touring Group)	P	●	
— 16" x 6.5" chrome-plated			●

● = Included. P = Available within package noted in parenthesis. O = Optional. ⁽¹⁾Built by Mitsubishi Motors Corporation. ⁽²⁾Some AM stereo broadcasting may not be compatible with this radio. ⁽³⁾Delete credit option on JXi.

INTERIOR DIMENSIONS⁽¹⁾

Head Room	— Front	38.7
	— Rear	37.0
Leg Room	— Front	42.4
	— Rear	35.2
Shoulder Room	— Front	55.0
	— Rear	49.1
Hip Room	— Front	52.4
	— Rear	44.7
Passenger Interior Volume (cu ft)		89.1
Cargo Volume (cu ft)		11.0

EXTERIOR DIMENSIONS⁽¹⁾

Wheelbase	106.0
Curb Weight (lbs)	3,332/3,428
Overall Length	193.0
Track — Front	60.2
— Rear	60.2
Drag Coefficient (Cd)	0.32

⁽¹⁾Dimensions shown in inches unless otherwise specified.

SPECIFICATIONS

Engine Configuration	2.5L SOHC SMPI V6 ⁽¹⁾
Displacement	152 CID
Compression Ratio	9.4:1
Bore and Stroke	3.29" x 2.99"
Fuel System	Sequential Multipoint Electronic Fuel Injection
Horsepower (SAE net @ rpm)	168 @ 5,800
Torque (lb ft @ rpm)	170 @ 4,350

⁽¹⁾Built by Mitsubishi Motors Corporation.

If you would like to discuss your equipment choices and vehicle pricing with a knowledgeable advisor before visiting your dealer, call 1-800-CHRYSLER or visit our Web site at www.chryslercars.com

Here's a design triumph of the GT roadability qualities that you demand, combined with abundant interior accomodation and contemporary style.

SEBRING COUPE

IF YOU WERE TO IDENTIFY THE QUALITIES YOU MOST ADMIRE IN A FINE AUTOMOBILE,

chances are that many of them would be found in this exciting new 1999 Sebring Coupe. Here is the **direct, linear response** to driver control input that once was the sole property of imports; here is the muscled, wedge styling that is as trend-setting and up to the minute as anything from Italy; and here is a mixture of cleverly designed creature-comfort features that begin with an astonishing, domestic sedan's measure of **interior volume—91.1 cubic feet**, to be exact — which you'll find ever-so-gracefully positioned between the A- and C-pillars of a sleekly sophisticated silhouette. Sebring Coupe offers plenty of the little things that can bring the biggest pleasures during the hours we all spend in our cars — like a standard **height-adjustable steering** column to more perfectly tailor the interface between you and your car. The term "ergonomics" takes on a whole new meaning within these spacious and supportive confines. Add in the sheer, undisguised admiration of drivers in lesser vehicles, and you'll find the long way home all the better to spend more miles luxuriating in your new Sebring Coupe.

Sebring's roominess is especially attractive in a field of competitive coupes less capaciously endowed.

Sebring's fog lamps are one of the stylishly sporty touches that attract admiring glances.





THE 1999 CHRYSLER SEBRING COUPE

Sebring LXi Coupe in Paper





Sebring LXi Coupe in Caffè Latte







SEBRING PERFORMANCE

The high-combustion
2.5-liter SOHC V6*
engine supplies LXi's
horsepower.

DON'T LET SEBRING COUPE FOOL YOU. Yes, it looks like a

sophisticated statement of **style** ... exactly what you want. But get behind

the wheel and it's **pure power**. In the world of V6s, few match the

technological precision of Sebring LXi's standard 2.5-liter, single overhead

cam **V6***. In the time it takes to head out of the driveway you begin to feel it.

Equipped with a four-speed electronically controlled automatic transaxle,

this state-of-the-engineering-art power plant delivers plenty of low-end

acceleration provided by 170 pound-feet of torque at 4,350 rpm. Hit

the highway with 163 horsepower at 5,500 rpm and the road feel of

this head-turning sport coupe is nothing less than **smooth**. Credit

Sebring's road handling to its **speed-sensitive power steering** which

automatically adjusts the amount of assist in the steering wheel to the speed

change. Combine that with the control of a **five-speed** gearbox and power

is truly in hand in Sebring LX. Through a series of carefully selected close-

ratio gears, Sebring LX's five-speed manual overdrive transaxle distributes

healthy go power from the 2.0-liter dual overhead cam four. The hydraulic

clutch provides smooth, short and **precise shifting** that puts you in

charge of the passing lane. The 16-valve engine is designed to be small and

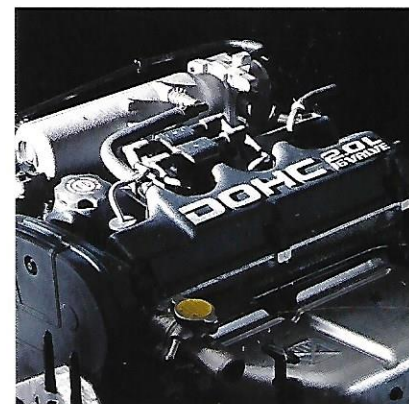
lightweight while producing a substantial 140 horsepower at 6,000 rpm.

The high-combustion efficiency of Sebring's technologically precise engines

will get you where you need to be. And make the statement you want

when you arrive.

Sebring LX gets
its go from a
2.0-liter DOHC
four-cylinder engine
and a five-speed
manual transaxle.



The four-speed
electronic automatic
transaxle is standard
on Sebring LXi.







Moonroof with one-touch-open feature, includes sunshade.

SOMETIMES YOU JUST NEED SOME SPACE. Sebring

brings it to you. And plenty of it: 91.1 cubic feet of passenger interior volume.

Even your stuff has space; handy map pockets in both doors, a lockable glove box and a split-folding rear seatback for larger items. So go ahead and

stretch out; enjoy the elbow room generally lacking in a sport coupe.

Delight in the multitude of Sebring's standard conveniences. Admire the way

convenient power accessory switches and levers invade your space, but in all

the right ways. Attached to the driver's visor, Sebring LXi's HomeLink®

Universal Transmitter provides for remote operations from the safety of the

driver's seat. A **compass**, integrated into the electrochromic rearview mirror

keeps you on the right track using tiny space wisely. Final touches to your stylish

surroundings are at your fingertips with the available premium AM stereo*/FM

stereo cassette/CD with three-band graphic equalizer and eight-speaker

Infinity® Sound System in six cockpit locations. Final touches to your stylish

surroundings are LX's six-way manually adjustable driver's seat that includes

side bolsters, reclining seatback, two-way head restraint and a reclining memory

feature. Feeling pampered yet?

*Some AM stereo broadcasting may not be compatible with this radio.

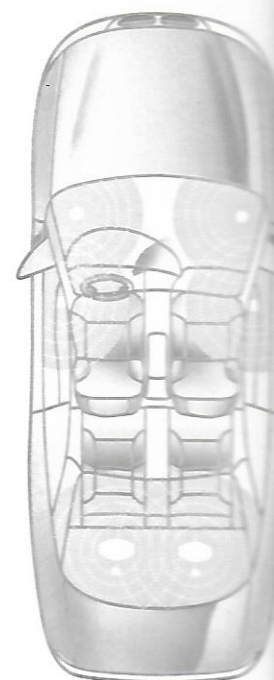


Console storage and handy dual cup holders.

Power buttons are easy to reach and easy to use.



Sebring LX interior in Gray Mirage cloth.

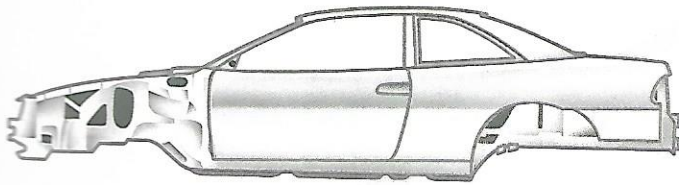






Sebring LXI leather-trimmed interior in G

SEBRING STRUCTURE



Exceptional handling comes from Sebring's rigid body structure.

IN SEBRING IT'S NOT ABOUT TAKING THE TURN, IT'S ABOUT TAKING AWAY THE TURN.

The characteristic sway, the roll, the veer — Sebring takes all that away. And what is left are wheels firmly planted on pavement and the exhilaration and solid control of an aggressive sport coupe. Great suspension alone can make a great difference. But in Sebring, it's a combination of factors that add up to total **road-hugging agility**. By taking advantage of the sophisticated design of a fully independent double-wishbone suspension, optimizing both its arrangement and the rigidity of its components, greater stability in turning and improved steering response is achieved. The four-wheel system includes shock-relief valves that challenge any speed bump or pothole. Body sway is controlled through a series of trailing arm-to-body mounts, which connect the suspension to the body and stabilizer bars that actually redirect the force of cornering tension and **anchor the turn**. Sound abatement insulation, used in 19 areas from instrument panel to trunk, make it a quiet ride as well. What wraps this package of solid handling is a unique, seven-stage paint process and an antichip protective coating on door panels. The end result is a rich monochromatic appearance. Sebring LXI's standard trunk lid spoiler and Sebring's overall **sleek aerodynamics** confirm stylish good looks on the outside that equal the comfort engineered on the inside.

Sebring Coupe was tested in extremes of heat and cold.

Next Generation driver and front-passenger air bags* are standard.



Plenty of room for people and cargo.

*Certified to the Federal Regulations that allow less forceful airbags. Always use seat belts. Remember the backseat is the safest place for children.



SEBRING COUPE STANDARD FEATURES

All Chrysler Sebring Coupes include:

Air Bags⁽¹⁾ — Next Generation driver and front-passenger
Air Conditioning
Climate Control Outlets — Rear, located under front seats
Clock — Digital, integral to all radios
Coat Hooks — Rear (2)
Console — Center, includes armrest with storage area, simulated woodgrain applique
Cup Holders — Front (2) integral with front console
Defroster — Electric rear window
Dynamic Side-Impact Intrusion Protection — Includes steel side-guard door beams and structural reinforcements
Floor Mats
Fuel Door — Passenger-side, remote release
Fuel Tank — 15.9-gallon
Glass — Tinted, all windows
Glove Box — Locking with lamp
Instrument Cluster — Analog, includes speedometer, tachometer, odometer, trip odometer; gauges for fuel level, engine coolant temperature, oil pressure (V6 engine only); warning lamps for brakes, parking brake, low oil pressure, check engine, charging system, seatbelts, air bags, and indicator lamps for highbeam headlamps, turn signals, hazard flashers and PRND2L

Lighting

Exterior — Fog lamps
 Interior — Rear courtesy, instrument panel courtesy, glove box and trunk — Dual overhead front reading lamps with courtesy function (moonroof uses integral rearview mirror lamps)

Map Pockets

Front doors
 Height-adjustable front outboard

Seats — Front bucket with two-way adjustable head restraints and reclining seatbacks, six-way manual driver-side adjustment, recliner memory; passenger-side two-way adjustable with easy-entry feature; rear bench with locking split-folding seatbacks

Smoker's Group

Ashtray and lighter

Steering

Speed-sensitive power-assisted rack-and-pinion

Steering Column

Height-adjustable

Stone Guards

Front wheel wells, black

Tire

Compact spare

Trunk Lid Release

Remote

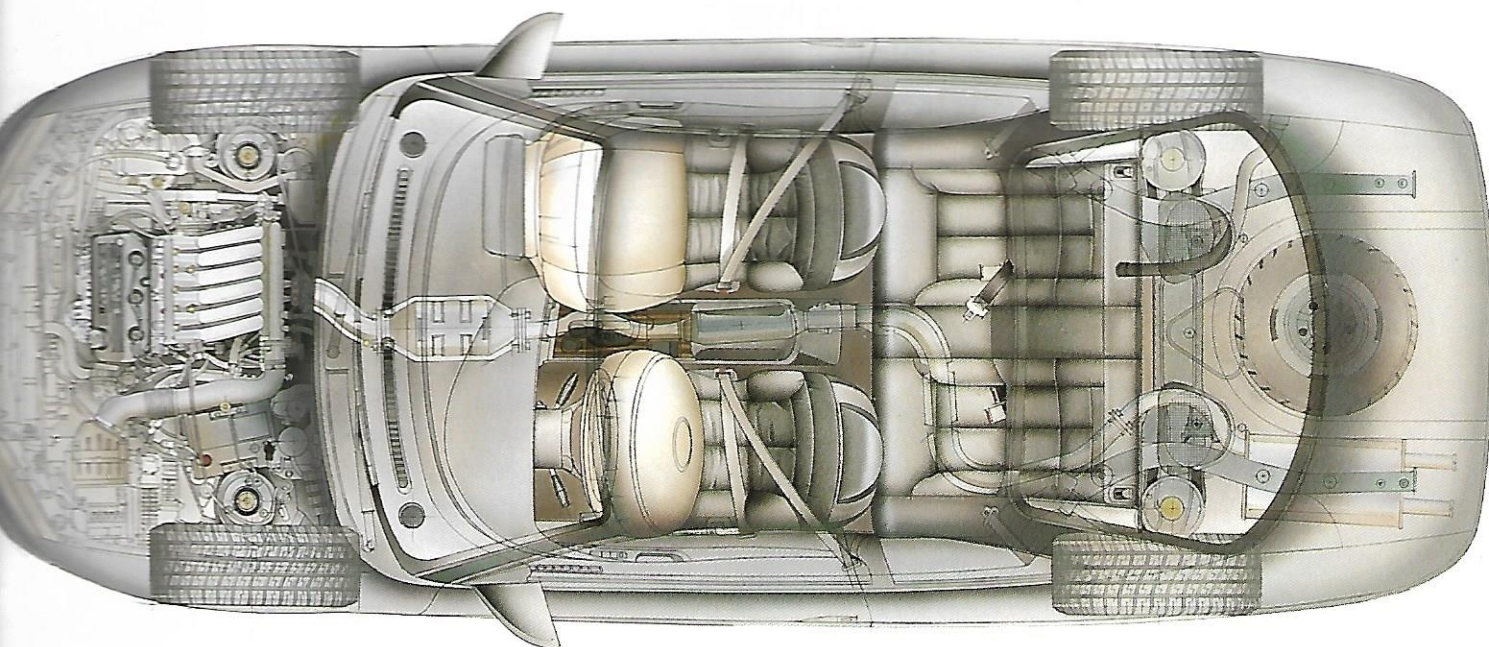
Wiper System

Two-speed with variable intermittent mode

⁽¹⁾ Certified to the Federal Regulations that allow less forceful air bags. Always use seat belts. Remember a backseat is the safest place for children.

FEATURES, OPTIONS AND PACKAGE GROUPS

POWER TRAIN AVAILABILITY		Sebring LX		Sebring LXi	
Engines	Transaxles	G	H	J	K
2.0L DOHC 16 Valve I-4	5-speed Manual	21G			
	4-speed Automatic	22G			
2.5L SOHC 24-Valve V6 ⁽¹⁾	4-speed Automatic		24H	24J	24K
Alternator					
— 90-ampere		●			
— 110-ampere			●	●	●
Battery					
— 430-ampere, maintenance-free		●			
— 525-ampere, maintenance-free			●	●	●
Brakes					
— Front disc/rear drum		●			
— 4-wheel disc			●	●	●
— 4-wheel disc antilock			O	O	O
Cargo Net — Trunk			●	●	●
Door Locks — Power			●	●	●
Homelink[®] Universal Transmitter — Programmable				●	●
Mirrors					
Exterior					
— Dual manual remote control, black		●			
— Dual power remote control black			●		
— Dual power remote control, body-color				●	●
Interior					
— Dual covered visor vanity		●			
— Dual illuminated covered visor vanity ⁽²⁾			●	●	●
— Automatic electrochromic rearview day/night with compass feature				●	●
Moonroof — Power			O	O	O
Power Seat — 6-way power driver-side			O	O	●
Remote Keyless Entry System — Panic and Vehicle Theft Security System			O	●	●
Seating Surfaces					
— Mirage cloth		●	●		
— Jaeger cloth				●	
— Leather-trimmed					●
Sound System					
AM stereo/1FM stereo radio with full logic cassette player and 6 speakers		●	●		



	Sebring LX		Sebring LXi	
	G	H	J	K
Audio System				
Premium AM stereo ⁽³⁾ /FM stereo radio with combination cassette/CD player with Infinity [®] Sound System with 8 speakers in 6 locations		O	O	O
Power Windows — Electronic		●	●	●
Power Locks — Rear trunk lid			●	●
Leather-trimmed Wheel — Leather-wrapped			●	●
Front Suspension				
MacPherson strut, double-wishbone, fully independent with front stabilizer bar	●	●		
Rear Suspension				
MacPherson strut, double-wishbone, fully independent with front and rear stabilizer bars			●	●
Tires				
P195/70HR14 BSW, all-season touring	●			
P205/55HR16 BSW, all-season performance		●		
P215/60HR17 BSW, all-season performance			●	●
Wheels				
14" steel wheels with deluxe wheel covers	●			
16" steel wheels with wheel covers		●		
16" cast aluminum		O		
17" cast aluminum (body-color when ordering Bright White or Caffè Latte)			●	●
Power Windows — Power with driver's one-touch-down feature		●	●	●

Legend: O = Optional. ⁽¹⁾ Built by Mitsubishi Motor Corporation. ⁽²⁾ Driver-side illuminated visor vanity mirror is deleted with HomeLink Universal Transmitter. ⁽³⁾ Some AM stereo broadcasting may not be compatible with this radio.

EXTERIOR DIMENSIONS⁽¹⁾

Overall Length	Front	39.1
	Rear	36.5
Overall Width	Front	43.3
	Rear	35.0
Overall Height	Front	53.1
	Rear	55.1
Wheelbase	Front	55.1
	Rear	49.6
Trunk Capacity		5
Passenger Interior Volume (cu ft)		91.1
Trunk Volume (cu ft)		13.1

EXTERIOR DIMENSIONS⁽¹⁾

Wheelbase	103.7
Overall Length	190.9
Overall Width	69.7
Overall Height	53.0
Track — Front	59.5
— Rear	59.3
Drag Coefficient (Cd)	0.32

⁽¹⁾ Dimensions shown in inches unless otherwise specified.

SPECIFICATIONS

	LX	LXi
Engine Configuration	2.0L DOHC SMPI 4-Cylinder	2.5L SOHC SMPI V6 ⁽¹⁾
Displacement	120 CID	150 CID
Compression Ratio	9.8:1	9.5:1
Bore and Stroke	3.45 x 3.27	3.28 x 2.99
Fuel System	Sequential Multipoint Electronic Fuel Injection	Sequential Multipoint Electronic Fuel Injection
Horsepower (SAE net @ rpm)	140 @ 6,000	163 @ 5,500
Torque (lb ft @ rpm)	130 @ 4,800	170 @ 4,350

⁽¹⁾ Built by Mitsubishi Motors Corporation.

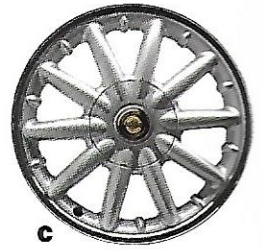
If you would like to discuss vehicle details or pricing with a knowledgeable advisor before visiting your dealer, call 1-800-CHRYSLER or visit our Web site at www.chryslercars.com



B

SEBRING AS YOU LIKE IT. Sebring comes so well equipped that there are actually fewer options than you might otherwise expect. Very continental, indeed. But the LX model's standard, AM/FM stereo radio with full-logic cassette player and six speakers plus digital clock (A) can be optionally upgraded with the LXi's standard AM stereo*/FM stereo cassette/CD player with three-band graphic equalizer and six speakers (B). Also available to both is an Infinity® Sound System with eight speakers in six locations. Sebring LXi has 17-inch cast aluminum wheels (C) standard; while LX wears standard 14-inch wheel covers (D), changing to 16-inch covers (E) with available V6; and 16-inch cast aluminum wheels (F) are optional on LX's equipped with the V6.

CHRYSLER ACCESSORIES FROM MOPAR provide numerous comfort and convenience products specifically engineered for your Sebring Coupe—like the easily Removable Roof Rack (below) that can be fitted with available Mopar Bike and/or Ski Carriers. EVSII® Security System includes two transmitters, starter interrupt, shock sensor, remote arm/disarm, and more. See your local Chrysler dealer for a complete listing of these attractive options.



C



D



E



F

LXi's standard 17-inch cast aluminum wheels are in body color when ordered with Bright White or Caffe Latte (shown here) exterior.



CUSTOMER ONE CARE™

At Chrysler Corporation, our commitment to complete customer satisfaction is evident in every car and minivan we sell. Long after a vehicle is driven away from the showroom, we will be there to ensure that our customers remain pleased with every new-vehicle purchase. To prove this commitment, all Chrysler Corporation vehicles are covered by the 3/36 Customer One Care Plan,* which includes a 3-year/36,000-mile (whichever comes first) Bumper-to-Bumper Limited Warranty† and Roadside Assistance‡ for 3 years or 36,000 miles. Roadside Assistance provides 24-hour, 7-day-a-week Emergency Road Service, contacted by a nationwide toll-free number. A 5-year or 100,000-mile Outer-Panel Rust-Through Limited Warranty covers the cost of all parts and labor needed to repair exterior sheet metal panels perforated by corrosion. The 3/36 Customer One Care Plan stays with the vehicle, transferring automatically to subsequent owners at no cost during the warranty period.

See your dealer for additional details and a copy of this limited warranty. Covers the complete vehicle against defects in materials and workmanship. Excludes wiper blades, clutch and brake linings, brake rotors and drums, normal maintenance items and tires (covered by their own manufacturer's warranty). Roadside Assistance services are provided by Cross Country Motor Club, Inc. (In California, Cross Country Motor Club of California, Inc.)

LEASING

Leasing is a popular way to finance a new vehicle and Chrysler Financial's **Gold Key Lease** has the flexibility to fit your vehicle choice and your lifestyle. Lease payments are typically lower and for a shorter term than conventional financing. At lease end, you can: 1) turn the vehicle in and lease a new one; 2) buy the vehicle and keep it; 3) buy the vehicle and sell it for a possible profit. If the idea of driving the vehicle you want and paying less for it sounds great, ask about Gold Key Lease. **Gold Key Plus** is a great leasing option for customers who want low lease payments and pride of vehicle ownership—Gold Key Plus offers both. Decide how long the vehicle will be driven and the trade-in value is guaranteed (less excess mileage and wear and tear). Ask your dealer for complete details. **Commercial Finance Options (CFO)** offers several finance and lease options to small and midsize businesses, municipalities and small fleet operators. A full range of automotive financing is available through Chrysler Financial, providing flexible payment plans and finance products for qualified buyers. Many of these plans can be customized to fit your particular budget and make your new vehicle even more affordable. The **College Graduate Program** is especially attractive to those just beginning their careers. Ask your salesperson for details about any of the above plans. Chrysler Financial's programs are subject to availability and state and local laws.

All product illustrations and specifications are based upon current information at the time of publication approval. Although descriptions are believed correct, complete accuracy cannot be guaranteed. Chrysler Corporation reserves the right to make changes from time to time, without notice or obligation, in prices, specifications, colors and materials, and to change or discontinue models. See your dealer for the latest information.

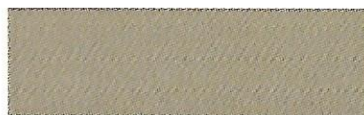
Chrysler, 300M, LHS, Concorde, Cirrus, Sebring, Town & Country, EVS II, Mopar, Sentry Key and Customer One Care are trademarks of Chrysler Corporation. HomeLink is a registered trademark of the Prince Corporation. Infinity is a registered trademark of Infinity Systems, Inc. Twillfast II is a registered trademark of the Haartz Corporation.

Always use seat belts. Remember a backseat is the safest place for children.

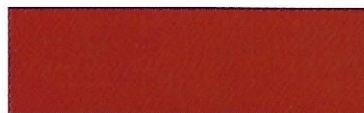
EXTERIOR COLORS/INTERIOR COLORS



Black
Interior: Tan, Gray



Bright White
Interior: Tan, Gray



Caffe Latte
Interior: Tan, Gray



Indy Red
Interior: Tan, Gray



Polo Green
Interior: Tan, Gray



Silver Mist
Interior: Gray



Paprika
Interior: Tan, Gray

FABRICS*



Mirage Cloth, Tan



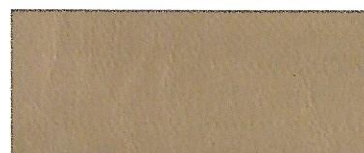
Mirage Cloth, Gray



Jaegar Cloth, Tan



Jaegar Cloth, Gray



Illusion/Twist Leather, Tan



Illusion/Twist Leather, Gray

Chrysler Sebring Coupe
and Sebring Convertible

Built on the belief that while
all cars appeal to our practical side,
the great ones appeal
to a more passionate side.

CHRYSLER



ENGINEERED TO BE GREAT CARS