

TAHOE & SUBURBAN 2005



CHEVROLET



2005 **TAHOE & SUBURBAN**

THEIR TOUGHEST RIVALS? EACH OTHER.

There are many ways to judge the merits of a full-size SUV. A natural starting point is power – and the Vortec V8 engine lineup in Tahoe and Suburban is sure to impress. You also demand an SUV with a high level of build quality and strength. That impression is reinforced by quality rankings that continue to place Tahoe and Suburban at the top of their class. No surprise there, since these sibling rivals are members of the Chevy Truck family – the most dependable, longest-lasting trucks on the road.* Tahoe and Suburban.

*Dependability based on longevity: 1981–July 2003 full-line light-duty truck company registrations. Excludes other GM divisions.



CHEVROLET  **FOR ALL LIFE'S ROADS**



TAHOE

Let's get real. Tahoe isn't just an SUV – it's one rock-solid Chevy Truck, built on a frame that is extremely strong and rigid, yet surprisingly lightweight, thanks to its hydroformed sections. The driving technology is equally advanced, with the available StabiliTrak vehicle stability enhancement system that helps correct lateral skids and return you to your intended direction. Real world situations – and the SUV that's built to handle them. Chevy Tahoe.

Tahoe LT 4x4, shown in Silver Birch Metallic.



■ Tahoe Interior

COMFORT. ANOTHER TAHOE ESSENTIAL.

No matter how rough the going gets outside, you can always take comfort in Tahoe's accommodations. The standard tri-zone climate controls allow two separate temperature settings for those riding up front, and a third setting in the rear. And a standard power six-way driver's seat keeps you in an optimal seating position, reducing fatigue. Not just nice-to-have features – essential components of Tahoe's comfort.

MAIN IMAGE: Chevy Tahoe LS Custom cloth interior, shown in Tan, featuring available reclining front bucket seats with standard 60/40 split-folding second-row seat and available 50/50 flip-and-fold removable third-row seat.

KEY FEATURES:

- Standard seating for six; available seating for up to nine
- Standard 40/20/40 Custom cloth front split-bench seat
- Standard power six-way driver's seat
- Available front bucket seats with centre floor console that features storage, cupholders and armrest
- Standard 60/40 split-folding second-row seat providing a flat load floor
- Available 50/50 flip-and-fold removable third-row seat
- Standard tri-zone climate controls
- Available rear-seat DVD Entertainment System.



- All Tahoes and Suburbans feature a mini overhead console. It includes map lights, rear air conditioning and heat controls, and a HomeLink universal three-channel transmitter (if so equipped).



- Second-row audio controls allow passengers to listen to different programming via the headphone jacks (headphones not included). Standard on LT models, available on LS.



- Power adjustable accelerator and brake pedals can be moved fore or aft nearly 75 mm (3 in.), making them that much easier to reach. Standard on LT models, available on LS.



TAHOE INTERIOR



SUBURBAN

Suburban is as technologically advanced as it is strong. Its strength speaks for itself with Gross Vehicle Weight Ratings (GVWRs) up to 3900 kg (8600 lb.). And an engine lineup that includes the available 320 hp Vortec 8100 V8. Its technological sophistication is evident in the QuadraSteer four-wheel steering system that's available on 2500 models – the first full-size SUV to offer this innovation. Suburban – in a class of its own.

Suburban 1500 Z71 4x4, shown in Black.



■ Suburban Interior

GET AWAY FROM IT ALL. EVEN BEFORE GETTING AWAY.

While escaping the rat race can create stresses of its own, your feeling of decompression can begin before you leave your driveway. Inside Suburban's cabin. That transition is even quicker in LT models, with their power 10-way front bucket seats with heated leather seating surfaces. And once you're completely comfortable, the Bose premium sound system and six-disc in-dash CD changer will place you in a world all your own.

MAIN IMAGE: Suburban LT interior, shown in Gray, with first and second-row leather seating surfaces.

KEY FEATURES:

- Standard seating for up to nine
- Standard 40/20/40 Custom cloth front split-bench seat
- Full-feature heated front bucket seats with leather seating surfaces standard on LT models*
- Second-row split-folding bench seat, or available reclining bucket seats
- Standard third-row three-passenger folding bench seat*
- Manual tri-zone climate controls standard on LS; automatic tri-zone climate controls standard on LT models
- Bose premium sound system with AudioPilot noise compensation technology is standard on LT models, available on LS
- Power adjustable pedals, standard on LT models, available on LS.

*Third-row seat is vinyl on LS and LT models when leather seating surfaces are specified.



- The rear-seat DVD Entertainment System features a fold-down 178 mm (7 in.) colour LCD monitor, audio/video input jacks for camcorder playback and video games, two wireless infrared headphones, and a remote control unit. Available on Tahoe and Suburban.



- You can fold down the third-row bench seat and then flip it forward to conveniently expand the cargo-carrying capacity. Or it can be removed to provide a flat load floor.



- It's easy getting to the third-row seats, thanks to a sliding entry track on the right side of the 60/40 second-row split-bench seat.





■ Controls

KNOWING EXACTLY WHERE YOU STAND.

You may like to travel far off the beaten track, but that's no reason to feel cut-off from the world. Tahoe and Suburban offer a series of advanced features that help to keep you in touch. An available touch screen DVD navigation system uses the Global Positioning System to determine your exact location.* And the sophisticated OnStar System with one year of the Safe & Sound plan is standard on all models.* Stay connected, with Tahoe and Suburban.

*Detailed map coverage is available for most major urban areas of the United States and certain metropolitan areas of Canada (Quebec City, Montreal, Ottawa, Toronto, London, Windsor, Edmonton, Calgary and Vancouver). Outside these areas coverage is significantly limited. Please speak with your sales consultant regarding the Tahoe/Suburban navigation system's geographic coverage.

*Please refer to page 22 for OnStar details.

MAIN IMAGE: Suburban LT instrument panel, shown in Tan.

KEY FEATURES:

- Standard OnStar System
- Standard interior rear-view mirror with compass and exterior temperature readouts
- Standard comprehensive Driver Information Centre
- Standard personalization features
- Standard steering wheel sound system and personalization controls
- Standard tire pressure monitoring system
- Available DVD Navigation System.



AT LEFT: The standard Driver Information Centre allows you to monitor numerous vehicle functions – everything from fluid levels to trip functions and memory controls. Adjustments to the Driver Information Centre settings can be made through the standard steering wheel-mounted controls.





■ Tahoe & Suburban Z71 EVEN MORE RUGGED?

Is there any way of making Tahoe and Suburban 4x4s even better prepared for the rough and tumble world of off-roading? About the only way is by adding the Z71 Off-Road Suspension and Appearance Package. It takes the tremendous capabilities of these full-size Chevy SUVs and adds the resilience of features such as skid plates, off-road jounce bumpers and rear locking differential, as well as bold styling details such as body-coloured bumpers. The Z71s: the even more rugged Tahoe and Suburban.

MAIN IMAGE: Tahoe 4x4 with the available Z71 Off-Road Suspension and Appearance Package, shown in Silver Birch Metallic.

KEY Z71 FEATURES:

- Gas-pressurized 46 mm shock absorbers
- Off-Road jounce bumpers
- High-capacity air cleaner
- Skid plates
- Rear locking differential
- 17-in. aluminum wheels with on/off-road tires
- Unique roof rack with cross bars
- Colour-keyed grille, bumpers, door handles and mirror caps
- Wheel flares.



AT LEFT: The Z71 Off-Road Suspension and Appearance Package not only enhances off-roading capabilities, it provides a style to match. Shown here is the Suburban 1500 4x4 in Summit White.





■ Performance

WELDING ITS POWER WISELY.

What distinguishes the Vortec V8 engine lineup from its competitors isn't just its massive power output. Sure, the 325 horsepower generated by the Vortec 6000 V8 that's standard on Suburban 2500s is impressive. As is the 440 lb.-ft. of torque of the Vortec 8100 V8 that's available on Suburban 2500s. But the quality that defines these engines over the long haul is their remarkable dependability. Vortec V8 engines – for the long haul.

ENGINE/TRANSMISSION* AVAILABILITY

VORTEC ENGINES	Vortec 4800 V8	Vortec 5300 V8	Vortec 6000 V8	Vortec 8100 V8
Horsepower @ rpm	285 @ 5200	295 @ 5200	325 @ 5200	320 @ 4200
Torque lb.-ft. @ rpm	295 @ 4000	335 @ 4000	365 @ 4000	440 @ 3200
TAHOE 1500 (1/2-ton)				
2WD	S	O†		
4x4	S	O†		
SUBURBAN 1500 (1/2-ton)				
2WD		S		
4x4		S		
SUBURBAN 2500 (3/4-ton)				
2WD			S	O
4x4			S	O

S = Standard. O = Optional.

*All Tahoes and Suburbans are equipped with a 4-speed automatic transmission with overdrive and Tow/Haul mode.

**The Suburban 2500 models include a heavy-duty transmission.

†Included with the Tahoe Off-Road Suspension and Appearance Package (Z71).

VORTEC 5300 V8 FEATURES:

- Lightweight aluminum cylinder heads and a low-friction valvetrain enhance both performance and fuel efficiency.
- The high-capacity oil pump runs directly off the crankshaft to reduce friction and improve lubrication.
- A deep-skirt V8 block design, with heavy-duty, 6-bolt cross-bolted main bearing caps, contributes to rigidity and durability.
- Long-life engine features include platinum-tipped spark plugs that are designed to last 166,000 km (100,000 mi.) before replacement.*

*Maintenance needs vary with use and driving conditions. Please refer to the Owner's Manual for more information.



ABOVE: The Vortec 5300 features lightweight aluminum cylinder heads that contribute to the engine's performance by dissipating heat quickly. This allows additional spark advance for improved power and efficiency.

VORTEC 8100 V8 FEATURES:

- The Powertrain Control Module (PCM) monitors and adjusts a series of engine and transmission functions to optimize performance.
- Stainless steel is used in the exhaust manifolds to increase longevity.
- A coolant loss protection feature allows you to continue driving a limited distance even when coolant levels are drastically reduced.
- The individual coil-per-plug ignition system delivers a high-energy spark to optimize combustion.
- The heavy-duty crankshaft uses an internal balancing system to reduce stress, increasing durability.
- Large, flat gasket surfaces help prevent oil leaks.
- Valves are positioned for optimal airflow and combustion.

AT RIGHT: Big block Vortec 8100 V8 engine.



■ QuadraSteer

A TURNING POINT FOR FULL-SIZE SUVs.



Take a full-size SUV and place it in a tight parking lot with a trailer in tow. Now get behind the wheel. Sound like a challenge? It doesn't have to be when you can steer with four wheels rather than two. That's the ability of the QuadraSteer four-wheel steering system, available on Suburban 2500 models.

QuadraSteer turns the front and rear wheels in opposite directions, for greater manoeuvrability at lower speeds. At highway speeds, it turns the wheels in the same direction for enhanced stability. QuadraSteer – now it's your turn.

The QuadraSteer Package includes roof marker lights, AutoRide control suspension, a limited-slip differential and the Trailing Special Equipment Package.



■ Trailer Towing READY TO GET HITCHED.

For as long as there have been SUVs, Chevy sport utes and trailers have been almost inseparable. Tahoe and Suburban have proven themselves very capable tow vehicles the hard way: they are engineered for the demands of towing from the ground up. Just how important is that? Just consider how few vehicles can handle these trailer weights: up to 3538 kg (7800 lb.) for Tahoe and up to 5443 kg (12,000 lb.) for Suburban 2500.* Built to haul – Tahoe and Suburban.

*When properly equipped. Refer to the Trailing with Chevrolet Trucks Brochure for more information.



- At the touch of a button, the standard Tow/Haul mode greatly enhances trailering ability, producing a more aggressive automatic transmission shift pattern.



- The camper-style power mirrors not only increase rearward visibility, they are also heated to help prevent any buildup of ice or snow and include in-glass turn signals. Camper-style mirrors are available on all Tahoes and Suburbans.



■ Technology

A DEGREE IN ENGINEERING NOT REQUIRED.

Not everybody is eager to pore over details about some of the most advanced full-size SUVs ever built. But that's okay – everybody will appreciate the benefits of Tahoe and Suburban's engineering. From the use of hydroformed steel in the frame to the availability of the StabiliTrak vehicle stability enhancement system, Tahoe and Suburban combine strength and durability with safety and excellent ride characteristics. Technology that makes a real difference in the real world – where you live.

1. REINFORCED SUSPENSION MOUNTS

Anchor points for the suspension components are reinforced for more positive mounting and reduced tolerances, resulting in more precise handling.

2. TORSION BAR FRONT SUSPENSION

All 2WD* and 4x4 models are equipped with a torsion bar front suspension system for a smoother ride and better isolation from harshness and noise.

3. LONG-RANGE HEADLIGHTS

On the low beam setting, the headlights have a range of 117 m (385 ft.). On high beam, the range increases to 183 m (600 ft.). The extended range gives you more time to react to obstacles or road hazards.

4. THREE-SECTION MODULAR FRAME

Tahoe and Suburban 1500 models feature a fully boxed-section frame with hydroformed front and rear sections for exceptional strength. The Suburban 2500 frame incorporates a hydroformed front section with a C-lip design in the middle section that complements the rear two-stage multi-leaf suspension.

5. AUTOTRAC 4x4 SYSTEM

The Autotrac four-wheel-drive system allows you to choose an automatically controlled four-wheel-drive mode, or traditional 2HI, 4HI, Neutral and 4LO functions. Autotrac is standard on 4x4 models.**

6. FIVE-LINK REAR SUSPENSION

All models (except Suburban 2500) include a five-link rear suspension with coil springs and a stabilizer bar, for responsive handling and superior isolation of the cabin from rough roads and potholes. Suburban 2500 features a two-stage multi-leaf spring suspension for heavy-duty trailer towing and increased payloads.

7. REMOTE KEYLESS ENTRY

A standard remote keyless entry system offers many personal safety, security and convenience features. It allows you to lock or unlock doors and release the rear liftgate from up to 6 m (20 ft.) away. The system includes two key fobs with a Panic button and a vehicle content theft alarm.

8. LARGE-CAPACITY GAS TANKS

All models feature large fuel tanks, reducing the need for frequent stops. Capacities range from 98 L (21.6 imp. gal.) in Tahoe to 140 L (30.8 imp. gal.) in Suburban 2500, which is equipped with dual fuel tanks.

9. AIR BAGS† AND SUPPRESSION SYSTEM

Dual-stage frontal air bags† with front-passenger sensing system and automatic air bag suppression system for front-passenger seat occupants.

10. SIDE-IMPACT AIR BAGS†

Available driver and front-passenger seat-mounted side-impact air bags help reduce the risk of injuries to front occupants in the event of a side-impact collision.

11. SAFETY BELTS

Seat-mounted safety belts in the first- and third-row outboard positions provide added comfort and convenience.

*Except Suburban 2500 2WD models, which use coil springs.

**Four-wheel drive models built before December 4th, 2004 and equipped with the available StabiliTrak system will employ a BorgWarner all-wheel drive (AWD) four-speed transfer case with an open differential. Vehicles produced after December 4th, 2004, will be equipped with an Autotrac 4x4 transfer case and a locking differential.

†A NOTE ON CHILD SAFETY: Always use safety belts and proper child restraints, even in vehicles equipped with air bags. Children are safer when properly secured in a rear seat. Never place a rear-facing infant restraint in the front seat of any vehicle equipped with an active air bag. Refer to the vehicle Owner's Manual and child safety seat instructions for more information. Air bag inflation can cause severe injury or death to anyone too close to the air bag when it deploys. Be sure every occupant is properly restrained.

††Except with available StabiliTrak. Please refer to footnote** above.



12. LARGE DISC BRAKES

Large, vented disc brake rotors with two-piston calipers and a large brake pad swept area increase braking performance, extend brake life and reduce brake fade. A four-wheel anti-lock braking system (ABS) with dynamic rear proportioning (DRP) is standard.

13. HYDROFORMED RAILS

Hydroforming of frame components helps increase structural integrity while decreasing weight. All models feature hydroformed front sections. All models except Suburban 2500 also feature hydroformed rear sections.

14. LOCKING REAR DIFFERENTIAL

All Tahoes and Suburbans include a locking rear differential as standard equipment.^{††} It helps get you moving when one rear wheel loses traction, by directing power to the wheel with the better grip.

15. BETTER FUEL ECONOMY

Thanks to refinements to the aerodynamic shape, a reduction to the base axle ratio and the introduction of an electric radiator cooling system fan for 2005, both Tahoe and Suburban provide improved fuel efficiency.



■ Safety and Security

A DYNAMIC APPROACH TO SAFETY.

The way you use your vehicle changes day-to-day and trip-by-trip. The comprehensive safety package in Tahoe and Suburban adapts to every or any condition. For example, there is an automatic air bag suppression system that deactivates the passenger side air bag if the right front seat is empty or occupied by a child or small occupant. In addition, sensors determine the position of both front seat occupants relative to the air bags and, in the event of a collision, the severity of the impact, to determine whether the second stage of the dual-stage air bags should be deployed or suppressed. These systems have been designed to provide optimum occupant protection. Yes, conditions change, but Chevy's commitment to safety is unwavering.

1. The OnStar System provides added safety, security and convenience at the touch of a button. OnStar with one year of the Safe & Sound plan is included on all Tahoe and Suburban models.
2. The standard 4-wheel disc braking system includes ABS and dynamic rear proportioning (DRP).



A General Motors Subsidiary

Always there. Always ready.

Chevrolets are renowned for their dependability. That extends beyond their engineering to include the unparalleled safety and security of OnStar. OnStar uses advanced communications technology to enhance your peace of mind whenever you're in your Chevrolet. All it takes is the touch of a single OnStar button inside your vehicle to connect you with one of our Advisors at the OnStar Centre.* They are standing by, ready to provide support 24 hours a day, 365 days a year.

What can OnStar Advisors do for you? They not only provide information and a range of other direct assistance services – but also, in an emergency, they will contact emergency service providers. And if air bags are deployed in your vehicle, an Advisor will contact you to determine if you need assistance. Your Advisor can also perform a remote diagnostic check of your engine and the electrical components in your vehicle.

Another convenient feature is OnStar Personal Calling,[†] which uses a button to activate the hands-free, voice-activated wireless phone that's integrated into your vehicle. It's there just in case your hand-held cellphone is lost, forgotten or has a low battery. Even better, there are no additional monthly system access fees, or additional long distance and roaming charges. And as a new customer, you will receive 30 trial minutes.

Knowing you have OnStar on board provides a powerful sense of added security. Just ask the more than 100,000 people who have become OnStar subscribers in Canada. How hard does OnStar work for you? The facts speak for themselves: every month in Canada, OnStar Advisors handle an average of 7100 routing calls, 2000 emergency calls, 1900 door unlocks and 1050 Roadside Assistance dispatches.

The OnStar System with one year of the Safe & Sound plan is included on all Tahoe and Suburban models. OnStar also offers the available Directions & Connections plan that provides route information, as well as a host of other convenience services. See your dealer for more details about the plans available for Chevy Tahoe or Suburban.

OnStar. Always there. Always ready.

*Subscription Agreement necessary. OnStar services require vehicle electrical system and wireless service to be available and operating for features to function properly. OnStar relies on existing emergency service providers as well as wireless and satellite technologies and is subject to their limitations. Call 1-888-4ONSTAR (1-888-466-7827), see your OnStar Owner's Guide, or visit onstarcanada.com for system information and details.

[†]Requires OnStar Personal Calling-enabled vehicle, existing OnStar service contract and prepaid calling minutes. OnStar voice recognition system may not recognize all voices. Available in most markets.



■ Accessories

TAHOE AND SUBURBAN. AND THEN SOME.

Tahoe and Suburban are trucks that allow you to express your individuality with the addition of GM Accessories. They are the only accessories that are integrated into the process of designing your vehicle, ensuring excellent fit, finish and functionality. And only GM Accessories are backed by GM's 3-year/60,000 km TOTAL™ Warranty.* They can also be included in your new-vehicle lease or finance agreement through GMAC. Ask your dealer for a complete list of the GM Accessories available for Tahoe and Suburban, or visit gmcanada.com

*Whichever comes first, when permanently installed by the dealer at the time you purchase or lease your new vehicle.

GM Accessories available for Tahoe and Suburban include:

- Moulded splash guards
- Cargo organizer
- Roof-mounted storage bin
- Hood protector
- 20-inch aluminum wheels
- All-weather floor mats.



Accessories

TAHOE & SUBURBAN STANDARD AND OPTIONAL FEATURES

MODEL SELECTOR

Model	Wheelbase mm (in.)	Drive	Cargo Volume ¹ L (cu. ft.)	Standard GVWR ² kg (lb.)	Maximum Payload ⁴ kg (lb.)	Max. Gross Trailer Weight ⁵ – kg (lb.)
1500 TAHOE	2946 (116.0)	2WD	2962 (104.6)	2948 (6500) ³	692 (1525)	3493 (7700)
	2946 (116.0)	4x4	2962 (104.6)	3084 (6800) ³	729 (1608)	3538 (7800)
1500 SUBURBAN	3302 (130.0)	2WD	3727 (131.6)	3175 (7000)	786 (1732)	3810 (8400)
	3302 (130.0)	4x4	3727 (131.6)	3266 (7200)	783 (1726)	3719 (8200)
2500 SUBURBAN	3302 (130.0)	2WD	3727 (131.6)	3900 (8600)	1282 (2827)	5443 (12,000)
	3302 (130.0)	4x4	3727 (131.6)	3900 (8600)	1146 (2527)	5443 (12,000)

¹Maximum with rear seat(s) folded down or removed. ²Gross Vehicle Weight Rating (GVWR) includes vehicle, passengers, equipment and cargo. ³When the third-row seat is specified, the GVWR is increased to 3084 kg (6800 lb.) for 2WD models, and 3130 kg (6900 lb.) for 4x4s. ⁴Payloads are approximate and will change with the addition of optional or aftermarket equipment. Consult your dealer or equipment supplier for details. ⁵Trailer Weight (also called Trailer Towing Capacity) is the weight of a trailer, its load or contents plus any other weight added to the tow vehicle. Many trailer towing applications require additional optional equipment. Refer to the Trailing with Chevy Trucks Brochure for more information.

SAFETY AND SECURITY

	LS	LT
Air bags – dual-stage, driver and right front-passenger, frontal. Includes Passenger Sensing System with automatic air bag suppression	S	S
Air bags – driver and front-passenger, seat-mounted side-impact	O	O
Brake/transmission shift interlock	S	S
Door locks – power, programmable with lock-out protection	S	S
Door locks – rear side-doors, child-security	S	S
Headlights – Daytime Running Lights with automatic light control	S	S
Keyless entry system – remote with Panic feature, includes rear cargo door, liftgate and liftglass	S	S
OnStar In-Vehicle Communications and Assistance Service – includes one-year Safe & Sound plan	S	S
Safety restraints – LATCH (Lower Anchors and top Tethers for Children)	S	S
Theft-deterrent system – PASSLock	S	S
Theft-deterrent system – content theft alarm, audible and visible	S	S
Tire pressure monitor	S	S
Traction assist – electronic (2WD)	O ⁶	O ⁶

⁶Not available with StabiliTrak or Vortec 8100 V8. Required with QuadraSteer on 2WD models.

MECHANICAL

	LS	LT
Brakes – power, 4-wheel disc with 4-wheel anti-lock braking system (ABS) and Dynamic Rear Proportioning (DRP)	S	S
Engines – refer to page 16 for detailed availability	S	S
Engine block heater	S	S
Exhaust system – aluminized stainless steel	S	S
Locking differential – rear ⁷	S	S
QuadraSteer Package – 4-wheel steering, includes mode selector switch, roof marker lights, special rear flared quarter panels with clearance lights, limited-slip differential, AutoRide Control suspension and Trailing Special Equipment ⁸ (Suburban 2500 only)	O	O
Snowplow Prep Package (Suburban 2500 4x4 only)	O	O
StabiliTrak – vehicle stability enhancement system, including traction assist (except with Z71, Vortec 4800 V8 or Suburban 2500 models)	O	O
Suspension – premium ride, includes rear self-levelling shock absorbers (Tahoe 2WD and 4x4/Suburban 1500 2WD)	S	S
Suspension – premium ride, includes rear progressive rate coil springs (Suburban 1500 4x4)	S	S
Suspension – firm ride (Suburban 2500)	S	S
Suspension – AutoRide Control with real-time damping and rear air-assisted self-levelling	O ⁹	O
Trailing Special Equipment Package – heavy-duty, includes weight-distributing platform with hitch receiver and 7-pin sealed connector (includes 7-pin to 4-pin adapter and trailer brake control harness), high-capacity air cleaner and heavy-duty transmission oil cooler	O	O
Transfer case – Autotrac with electronic push-button controls (4x4 without StabiliTrak)	S	S
Transfer case – BorgWarner 2-speed full-time All-Wheel Drive (AWD) open differential (with optional StabiliTrak). Refer to footnote** on page 20	S	S
Transmission – 4-speed automatic with overdrive and Tow/Haul mode	S	S

⁷Except with available StabiliTrak. ⁸Requires Vortec 6000 V8 and available traction assist on 2WD models. ⁹Not available with 1500 models.

EXTERIOR

	LS	LT
Assist step – moulded, black	S	S
Doors – rear, aluminum liftgate with integral liftglass, rear-window wiper/washer	S	S
Fender flares – body-coloured wheel openings (Suburban 2500)	S	S
Fog lights	S	S
Glass – Solar-Ray, tinted, deep-tinted behind front doors	S	S
Mirrors – manual foldaway, power remote control, heated, black	S	–
Mirrors – power foldaway, power remote control, reverse tilt, heated, puddle lights, body-coloured cap with integral turn signals and driver's side electrochromic auto-dimming feature (standard with Z71)	O	S
Mirrors – camper-style, power remote control, power extendable, heated and integral turn signals ¹⁰	O	O
Mouldings – bodyside with bright chrome insert, black on LS, body-coloured on LT	S	S
Roof rack – side rails only	S	S
Roof rack – cross bars	O ¹¹	S
Skid Plates and Wheel Flares Package – includes underbody protection for oil pan, differential case and transfer case, fender flares (4x4 only, standard with Z71)	O	O
Sunroof – power, sliding glass panel with express-open feature	O	O
Tow hooks – two front (standard with Suburban 2500 4x4 and Z71)	O	O
Tires – P265/70R16 all-season touring blackwall ¹² (1500 models)	S	–
Tires – P265/70R17 all-season blackwall ¹² (1500 models)	–	S
Tires – LT245/75R16E all-season blackwall (Suburban 2500)	S	S
Wheels – aluminum with steel spare, underbody ¹³	S	S
Windshield wipers – 2-speed with variable delay (intermittent)	S	S

¹⁰Requires available Trailing Special Equipment Package. ¹¹Available with Cargo Package. ¹²Available with white-outline letters.

¹³Wheels shown on page 26.

INTERIOR

	LS	LT
Air conditioning – tri-zone, manual climate control front and rear	S	–
Air conditioning – tri-zone, electronic climate control front and rear (standard with Z71)	O	S
Cargo Package – includes cargo mat, cargo net, cargo shade and roof rack cross bars (excludes mat and shade with 3rd-row seating in Tahoe)	O	S
Console – floor, includes storage, coin holders, cupholders, rear-seat audio controls (included with bucket seats)	O	S
Console – mini overhead, includes map lights, rear-seat air conditioning controls	S	S
Cruise control – electronic with resume, coast and decelerate/accelerate features	S	S
Defogger – electric rear-window	S	S
Floor covering – colour-keyed carpeting with floor mats	S	S
Heater – rear auxiliary	S	S
HomeLink – 3-channel, universal transmitter (standard with Z71)	O	S

INTERIOR (continued)	LS	LT
Instrumentation – full analogue gauge cluster (includes speedometer, tachometer, voltmeter, coolant temperature, oil pressure, fuel, odometer, trip odometer and engine hour meter)	S	S
Instrumentation – Driver Information Centre includes multi-language and trip functions, displays vital vehicle functions with both visual and audible reminders/warnings	S	S
Lighting – overhead, reading and courtesy	S	S
Mirror – rear-view, includes compass, exterior temperature and front-passenger air bag status displays	S	S
Pedals – power adjustable brake and accelerator	O	S
Personalization feature – programs many comfort and convenience features (standard with Z71)	–	S
Power outlets – auxiliary 12-volt	S	S
Retained accessory power	S	S
Smoker's Package – includes lighter and ashtray (standard with bench front seat)	O	O
Steering column – tilt adjustable	S	S
Steering wheel – leather-wrapped, black	S	S
Steering wheel – controls for sound system and Driver Information Centre	S	S
Sunshades – LH and RH, colour-keyed cloth with illuminated visor mirrors	S	S
Windows – power, driver's side express-down and passenger lock-out features	S	S

SEATS	LS	LT
Custom cloth 40/20/40 split-bench reclining front seat, power 6-way driver adjuster and centre armrest with storage	S	–
Custom cloth reclining high-back front bucket seats with inboard armrests, power 6-way driver adjuster, rear seatback storage pockets, floor console, Bose premium speaker system with AudioPilot noise compensation technology and second-row audio controls	O	–
As above, including leather seating surfaces (standard with Z71)	O	–
Full-feature reclining front bucket seats with leather seating surfaces, heated with separate controls for cushion and seatback, inboard armrests, power 10-way driver and front-passenger adjusters including power lumbar adjusters and seatback bolsters, driver 2-position memory controls and centre floor console	–	S
Second-row 3-passenger 60/40 split-folding bench seat with centre armrest	S	S
Second-row reclining bucket seats with inboard armrests ¹⁴	O	O
Third-row 3-passenger 50/50 removable flip-and-fold seat ¹⁵ (Tahoe)	O	O
Third-row 3-passenger folding bench seat ¹⁵ (Suburban)	S	S

¹⁴Requires front bucket seats with leather seating surfaces. ¹⁵3rd-row is vinyl on LS and LT models, when leather seating surfaces are specified.

ENTERTAINMENT SYSTEMS	LS	LT
All Tahoe/Suburban sound systems include an electronically tuned AM/FM stereo with seek/scan, auto tone control, Radio Data System (RDS) and digital clock		
CD and cassette players	S	O
6-disc in-dash CD changer (standard with Z71)	O	S
Bose premium speaker system with AudioPilot noise compensation technology – included with front bucket seats (standard with Z71)	O	S
Second-row audio controls and headphone jacks (standard with Z71)	O	S
DVD Entertainment System – rear seat, includes overhead fold-down 178 mm (7 in.) LCD colour monitor, DVD player, video camera and video game input (RCA) jacks, 2 sets of wireless headphones ¹⁶	O	O
Integrated DVD Navigation System – includes AM/FM stereo with CD player, Bose 9-speaker premium sound system (including subwoofer) with AudioPilot noise compensation technology, full-feature autonomous navigation with touch screen and points-of-interest ¹⁷	–	O

¹⁶Requires front bucket seats and electronic climate control. ¹⁷Detailed map coverage is available for most major urban areas of the United States and certain metropolitan areas of Canada (Quebec City, Montreal, Ottawa, Toronto, London, Windsor, Edmonton, Calgary and Vancouver). Outside these areas coverage is significantly limited. Please speak with your sales consultant regarding the Tahoe/Suburban navigation system's geographic coverage. S – Standard. O – Optional individually or in combination with other optional equipment.

TAHOE AND SUBURBAN PREFERRED EQUIPMENT GROUPS

Shown below are the Preferred Equipment Groups (PEGs) available on Tahoe and Suburban. PEGs are packages of popular options that have been assembled to add value and make ordering easier. PEGs are subject to change without notice. Please note that features included in PEGs are not always available as individual options. For more information on Preferred Equipment Groups, please see your Sales Consultant.

Tahoe and Suburban offer the following popular upgrades to the LS for even more convenience, comfort and performance.

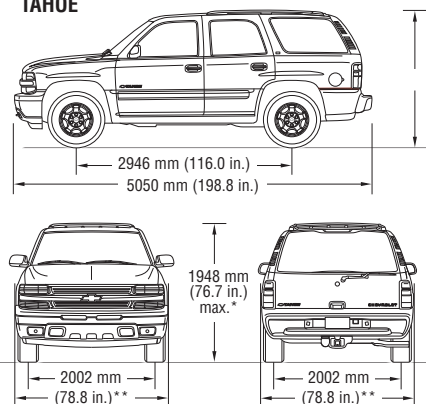
- Tahoe adds the following options to the LS model: Vortec 5300 V8 engine – Bucket seats with leather seating surfaces – In-dash 6-disc CD changer and Bose premium speaker system – Rear-seat audio controls and headphone jacks
- Suburban adds the following options to the LS model: Bucket seats with leather seating surfaces – In-dash 6-disc CD changer and Bose premium speaker system – Rear-seat audio controls and headphone jacks

Z71 OFF-ROAD SUSPENSION AND APPEARANCE PACKAGE

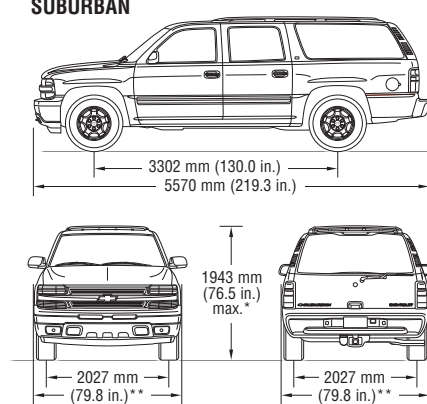
Z71 Off-Road Suspension and Appearance Package includes gas pressurized shock absorbers, off-road jounce bumpers, high-capacity air cleaner, skid plates, wheel flares and 17" aluminum wheels with P265/70R17 on/off-road blackwall tires, unique roof rack with cross bars, colour-keyed grille, bumpers, door handles and mirror caps (available on Tahoe and Suburban 1500)

EXTERIOR DIMENSIONS

TAHOE



SUBURBAN



*Including roof rack. **Excluding mirrors.

CARGO AREA DIMENSIONS mm (in.)

	TAHOE	SUBURBAN
Height of rear door opening	916 (36.1)	916 (36.1)
Width of rear door opening	1247 (49.1)	1247 (49.1)
Maximum cargo width	1519 (59.8)	1519 (59.8)
Cargo floor width between wheel housings	1247 (49.1)	1247 (49.1)
Load-floor length to front seat	2139 (84.2)	2657 (104.6)
Load-floor length to 2nd-row seat	1265 (49.8)	1768 (69.6)
Load-floor length to 3rd-row seat	351 (13.8)	917 (36.1)

CARGO VOLUME L (cu. ft.)

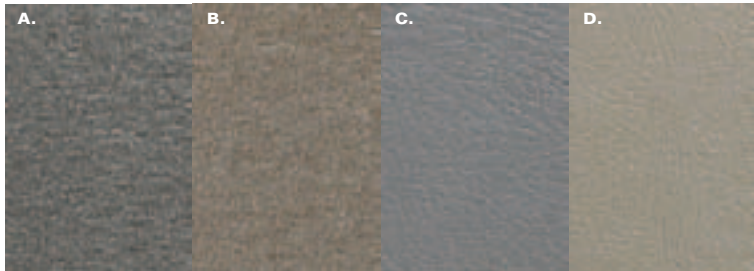
	TAHOE	SUBURBAN
With 2nd-row seat folded and 3rd-row seat removed	2962 (104.6)	3727 (131.6)
With 3rd-row seat removed or folded	1801 (63.6)	2549 (90.0)
With all seats in position	462 (16.3)	1294 (45.7)

■ Exterior & Interior Colours/Wheels CREATE YOUR OWN PALETTE.

Tahoe and Suburban are vehicles designed to reflect your priorities – now we invite you to reflect your personal style through the wide array of choices for exterior colours, fabrics and wheels.

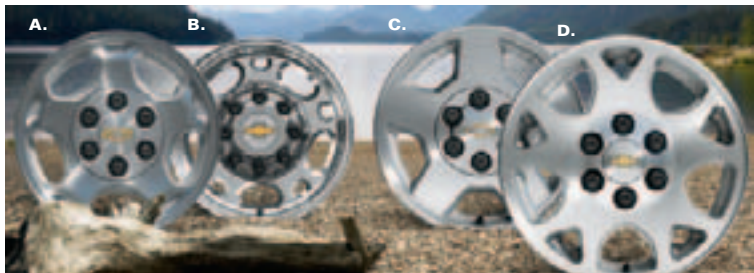
■ Interior Fabrics

- A.** Gray Custom Cloth with insert.
- B.** Tan Custom Cloth with insert.
- C.** Gray Leather Seating Surfaces.
- D.** Tan Leather Seating Surfaces.



■ Wheels

- A.** 16" Cast Aluminum, standard on LS models.
- B.** 16" Polished Aluminum, standard on Suburban 2500 models.
- C.** 17" 5-Spoke Aluminum, standard on LT models.
- D.** 17" Machined Aluminum, standard on Z71 models.



62 – Dark Gray Metallic

50 – Summit White

26 – Bermuda Blue Metallic



59 – Silver Birch Metallic

Colours may not be exactly as illustrated due to restrictions of the printing process. Please see your Sales Consultant for specific colour and model availability.

15 – Sandstone Metallic*

41 – Black

63 – Sport Red Metallic

25 – Dark Blue Metallic

*Not available with Gray interior trim.

A WORD ABOUT THIS BROCHURE

Some of the equipment shown or described throughout this brochure may be available at extra cost. We have tried to make this brochure comprehensive and factual. We reserve the right, however, to make changes at any time, without notice, in prices, colours, materials, equipment, specifications, models and availability. Specifications, dimensions, measurements, ratings and other numbers in this brochure and other printed materials provided at the dealership or affixed to vehicles are approximates based upon design and engineering drawings and prototypes and laboratory tests. Your vehicle may differ due to variations in manufacture and equipment. Since some information may have been updated since the time of printing, please check with your Chevrolet dealer for complete details. General Motors of Canada Limited reserves the right to lengthen or shorten the model year for any product for any reason, or to start and end model years at different times.

PRIVACY STATEMENT

At General Motors of Canada Limited ("GM Canada") we respect your privacy and value our relationship with you. Your personal information will be protected, will never be sold, and will be used only by GM Canada, our affiliates, dealers/retailers, and service suppliers (only to provide services). If you wish to be removed from GM Canada marketing communications; would like to limit only certain marketing communications from us; would like a listing of our specific uses or further information about those with whom your information is shared; or for further information about our Privacy Policy and practices, please contact us at 1-800-GM-DRIVE (1-800-463-7483) or through our Web site at www.gmcanada.com

A WORD ABOUT ASSEMBLY

Chevrolets are equipped with engines and components produced and assembled by different operating units of General Motors, its subsidiaries and suppliers, and these engines and components may change or be obtained from different sources from time to time. All such engines and components are approved for use in Chevrolets. Certain equipment ordered may be unavailable at the time of assembly and we suggest that you verify that your vehicle includes the equipment you ordered, or if there are changes, that they are acceptable to you.

TRADEMARKS

The marks appearing in this Tahoe & Suburban brochure including, but not limited to: General Motors, GM, the GM Canada emblem, the GM Canada Web site address, the GM Accessories logo, Chevrolet, Chevy, the Chevrolet emblem, Astro, Avalanche, Blazer, Colorado, Equinox, Express, Silverado, SSR, Suburban, Tahoe, TrailBlazer and their respective logos, emblems, slogans and vehicle model names and body designs; and other marks such as Z71, Autotrac, AutoRide, PASSLock, SMARTLEASE, Solar-Ray, StabiliTrak, TOTAL Warranty and Vortec are all trademarks of General Motors Corporation and/or General Motors of Canada Limited, its subsidiaries, affiliates or licensors.

GMAC is a registered trademark of the General Motors Acceptance Corporation.

OnStar, the OnStar logo and the OnStar button are registered trademarks of the OnStar Corporation.

Quadrasteer and TheftLock are registered trademarks of Delphi Automotive Systems.

Bose and AudioPilot are registered trademarks of the Bose Corporation.

HomeLink is a registered trademark of the Prince Corporation.

Radio Data System (RDS) is a registered trademark of the U.S. National Association of Broadcasters.

COPYRIGHT

© Copyright 2004 General Motors of Canada Limited. All Rights Reserved. All text, images, graphics, and other materials in this Tahoe & Suburban brochure are subject to the copyright and other intellectual property rights of General Motors Corporation and/or General Motors of Canada Limited. These materials may not be reproduced, distributed or modified without the express written permission of General Motors Corporation and/or General Motors of Canada Limited.

Printed in Canada, August 2004.

NOTHING ELSE IS THE EQUAL OF A CHEVY TRUCK. AS THE MOST DEPENDABLE, LONGEST-LASTING TRUCKS ON THE ROAD,* CHEVY TRUCKS ARE BUILT STRONG, CAPABLE, COMFORTABLE AND DURABLE. WOULD YOU WANT YOUR TRUCK BUILT ANY OTHER WAY?

*Dependability based on longevity: 1981–July 2003 full-line light-duty truck company registrations. Excludes other GM divisions.

CHEVROLET  FOR ALL LIFE'S ROADS

Commitment

ROCK-SOLID TRUCKS. BACKED BY A ROCK-SOLID COMMITMENT. There is nothing halfway about Chevrolet's approach to building strong and durable trucks. That can also be said of the way Chevrolet backs each and every truck that bears its name. A comprehensive series of support programs makes it easier to purchase or lease a Chevrolet Truck and help protect you and your vehicle down the road. A powerful example of the level of protection you can expect is the GM TOTAL™ Warranty. It is so thorough, it covers everything from the roof right down to the tires. So when you drive off the lot of your Chevrolet dealership, you can do so with total confidence. Peace of mind is knowing that your vehicle is built for the long haul, and is backed by a comprehensive warranty.

THE GM TOTAL™ WARRANTY:†

The GM TOTAL™ Warranty is your promise of total warranty protection. It covers every new Chevrolet Tahoe or Suburban for 3 years or 60,000 km.* Complete vehicle repairs are covered,** including parts and labour, with no deductible. The warranty includes:

- 3-year/60,000 km* complete vehicle repair coverage
- 6-year/160,000 km* corrosion perforation coverage
- 8-year/130,000 km* coverage on catalytic converters and powertrain control modules (PCMs).

*Whichever comes first. **To correct any defects in material or workmanship occurring during the warranty period. Regular maintenance is not included, nor is excessive wear and tear caused by reckless or negligent driving.

OTHER OWNERSHIP PRIVILEGES AND PROGRAMS:†

- **Roadside Assistance** – 24/7 service via toll-free number during your warranty period, anywhere in Canada or the United States
- **Courtesy Transportation** – may be offered during warranty period
- **GM Protection Plan (GMPP)** – the only extended service contract backed by the resources and commitment of General Motors; GMPP may be purchased at the time of your sale or lease, or subsequently
- **GM Mobility Program** – you may be eligible for reimbursement of up to \$1000 (taxes included) for adaptive equipment for your GM vehicle
- **GM Accessories** – personalize your vehicle with GM Accessories, specifically engineered for your new GM vehicle
- **GM Goodwrench Service** – with GM-certified technicians and GM-approved parts, nobody knows your GM vehicle better.

TO HELP YOU PURCHASE OR LEASE A NEW VEHICLE:

- **GMAC Financing** – on-the-spot financing at your GM dealership††
- **GMAC SMARTLEASE** – a smart alternative to traditional financing††
- **GM Graduate Program** – recent graduates may qualify for up to \$1000 (taxes included) off any new GM vehicle†
- **The GM Card** – eligible cardholders may be able to redeem up to \$3500 in GM Card® Earnings toward the total purchase price or lease down payment on selected vehicles. For more information on The GM Card please call 1-800-461-3279.†

INFORMATION RESOURCES:

You can find more information about these programs from your GM dealer, or at these information centres:

- The GM Web site at **gmcanada.com**
- The GM Customer Communication Marketing Centre at 1-800-GM-DRIVE (**1-800-463-7483** or **1-800-263-3830** for TDD users) – for information about any GM product or service, including The GM Card and the GM Mobility Program
- For information about GMAC visit the GM Web site or call **1-800-616-4622**.

†Conditions and limitations apply. ††Subject to eligibility.



SSR

COLORADO

SILVERADO

AVALANCHE

EQUINOX

BLAZER

TRAILBLAZER

TAHOE

SUBURBAN

ASTRO

EXPRESS



CHEVROLET

