



# 05 EXPLORER SPORT TRAC



# > Forget About The Rulebook.

Everywhere from urban fast lane to rugged backcountry, Ford SUVs empower you with confident capability. Escape, Explorer Sport Trac, Explorer, Expedition and Excursion – each proudly proclaims its Ford heritage – yet each clearly makes its own statement. An amazing fusion of truck-like versatility with SUV comfort, including spacious seating for 5, the award-winning Explorer Sport Trac defies convention. From down 'n' dirty on the trails to stylin' on the town, "ST" is a unique vehicle, perfect for those inspired to live life by their own set of rules. You in?



Explorer Sport Trac XLT Premium – Dark Stone Metallic  
available cargo cage bed extender



Excursion

Expedition

Explorer Sport Trac

Explorer

Escape

## 2005 Ford Explorer Sport Trac



### Capability

03

Gutsy 4.0L SOHC V6 Engine

Impressive Towing Capacity

Industry-First Composite Cargo Bed

Handy Cargo Area Power Point

### Exterior

05

Rockin' Sport Trac Adrenaline

Clever Power Rear Window

Breezy Power Moonroof

### Interior

07

Two-Tone Leather-Trimmed Seating

Audiophile 6-Disc Sound System

Safety Canopy™ System

Easy-To-Clean Rubber Flooring

### Specifications

09

Model Highlights

Standard and Available Equipment

Fabrics and New Colors

Genuine Ford Accessories



### Go For The Glory

4.0L SOHC V6 Engine – This powerhouse kicks out a full 210 hp\* and 248 lb.-ft. of torque. In fact, it can help you tow more than 5000 lbs.\*\* worth of extra fun (think PWCs, ATVs, powerboat, etc.) on your next glorious adventure.

\*210 hp with E85 fuel; 205 hp and 242 lb.-ft. of torque with gasoline.

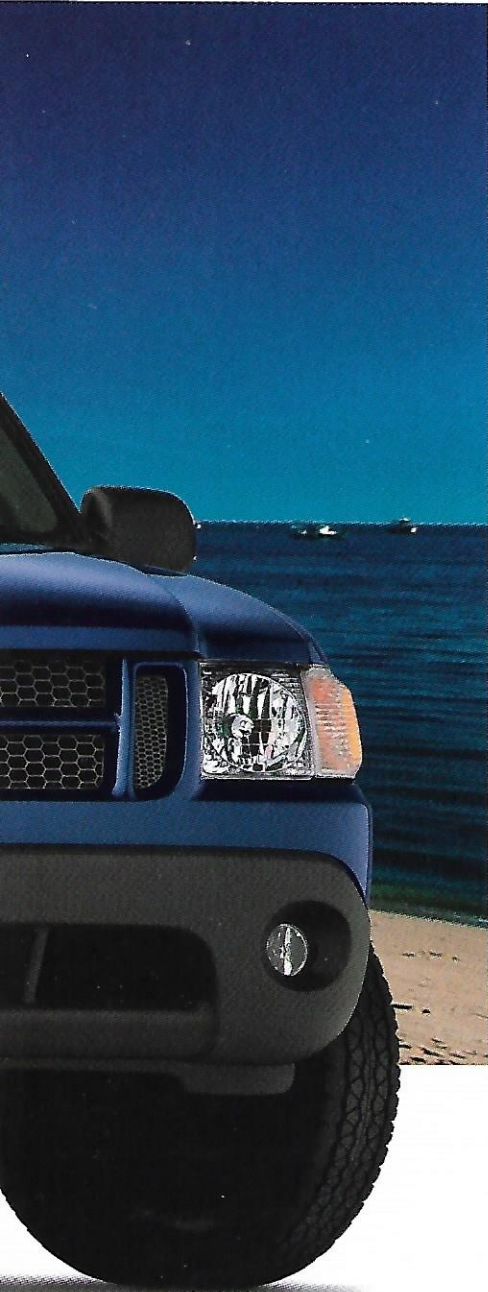
\*\*When properly equipped.



Explorer Sport Trac XLT \_ Dark Blue Pearl Metallic  
available Premium Sport Group

# > Destination: Adventure.

Ford Explorer Sport Trac is one seriously capable ride – a great fit for your seriously adventurous life. Available in 4x4 or 4x2, every Sport Trac delivers plenty of low-end torque for strong acceleration and lots of pulling power. From backwoods to blacktop, the independent front Short- and Long-Arm (SLA) suspension gives Sport Trac the flexibility to take all sorts of terrain in stride. And the composite cargo bed is ruggedly built to handle all sorts of gear. So bring on the action. ST is ready for anything you throw at it.



## Take On The Tough Stuff

**Industry-First Composite Cargo Bed** – Made of a durable, sheet-molded composite material, Sport Trac's cargo bed is dent- and scratch-resistant, not to mention corrosion-proof.



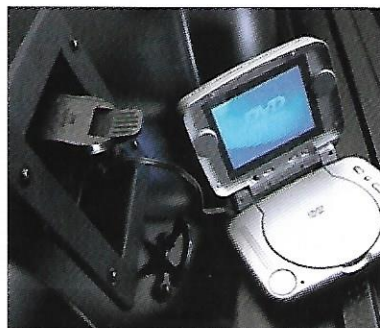
## Keep Cargo In Check

**10 Tie-Down Hooks** – With 3 on each side rail and 4 inside the bed, you'll make quick work of securing everything from loose gear bags to that new outdoor furniture you've been wanting.



## Protect Your Property

**Hard Tonneau Cover** – This available factory-installed cover offers excellent all-weather protection for your gear. It folds for ease of use and locks for peace of mind.



## Juice On The Go

**12V Cargo Area Power Point** – This cool standard feature makes it ultra-convenient to operate a portable air compressor, laptop computer, GPS unit, lights or anything else with a compatible adapter cord.

# > Uptown Attitude.

Not every adventure takes place in the wild, so we made sure Explorer Sport Trac can play just as hard in the city as it does in the sticks. Bold, athletic design cues blend the signature combination of 4 full-size doors and a pickup-style cargo bed, giving Sport Trac a striking, confident street presence. Adrenalin cranks up the impact with its sleek, monochromatic exterior accented by eye-catching 16" chromed wheels and sturdy chromed side step bars. Both Adrenalin and XLT Premium also include sporty fog lamps.

## Easy Breathin' Access

Power Rear Window – Need some fresh air? Just tap the control knob to lower the window a few inches. Need to grab something from the cargo bed? Just twist the knob to lower the window all the way. Standard on every Sport Trac, it also features an anti-pinch sensor.



## Pure "Adrenalin" Rush

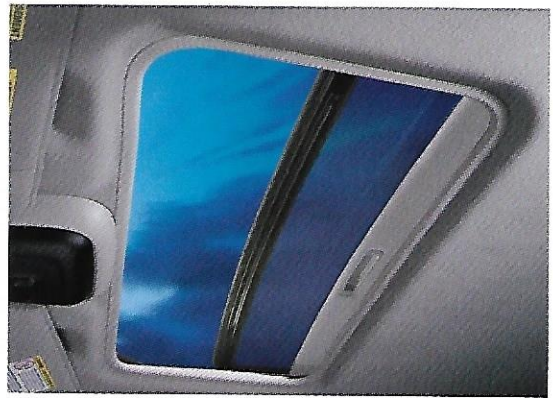
Pioneer® Ultimate Audio System – This heart-thumpin' setup delivers 510 watts of pure sonic delight through its boomin' 8" subwoofer and 8 other strategically placed speakers in 4 different locations. Exclusive to Sport Trac Adrenalin, the system features neon backlighting on the 6-disc in-dash CD changer with MP3 capability to help set the mood.



Explorer Sport Trac Adrenalin 4x4 \_ Bright Red

## Open-Air Enjoyment

Power Moonroof – With an express one-touch-open feature, it's the perfect way to take in a warm sunny day, or even a crisp starry night. A manually retractable sun shade helps limit your exposure, when you feel the need. Available on XLT, XLT Premium and Adrenalin.



# > Inspirational Retreat.

With water-resistant cloth seating and plenty of room for 5 adults, Sport Trac is equipped to exceed your sporting expectations. XLT Premium drivers get an 8-way power-adjustable seat including power lumbar support for those days when you've pushed yourself a little too hard. Want the same pampering for your front passenger? Add the available Leather Seating Group on XLT Premium or Adrenalin. In addition to two-tone leather-trimmed seating (pictured below), you'll also get an auto-dimming rearview mirror and heated front seats.

## Help From Above

Safety Canopy™ System – This available system uses advanced sensors to deploy side-curtain airbags in certain side-impact or rollover events. It also keeps them inflated longer than the front airbags to provide enhanced head and shoulder protection.



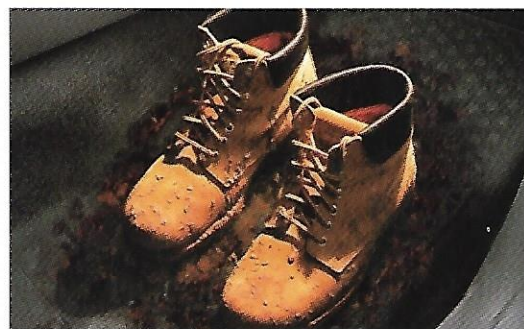
## Pack It All In

60/40 Split-Folding Rear Seats – Need more room for gear? Just fold down either side, and you've got instant cargo space. Standard on every Sport Trac (of course). Outboard seating positions feature 4-way adjustable head restraints for extra safety. Cargo and load capacity limited by weight and weight distribution.



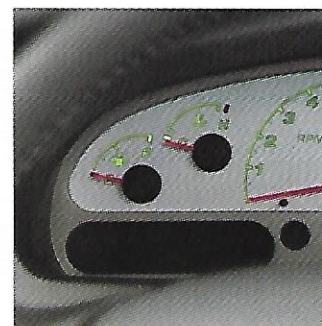
## Keepin' It Clean

Molded-Rubber Flooring – Sport Trac's durable texturized flooring makes cleaning up after your adventures quick and easy.



## Step Out In Style

Berber Carpeted Floor Mats – Color-keyed to the interior, these sturdy mats dress up XLT, XLT Premium and Adrenalin. Front mats feature the Sport Trac logo.

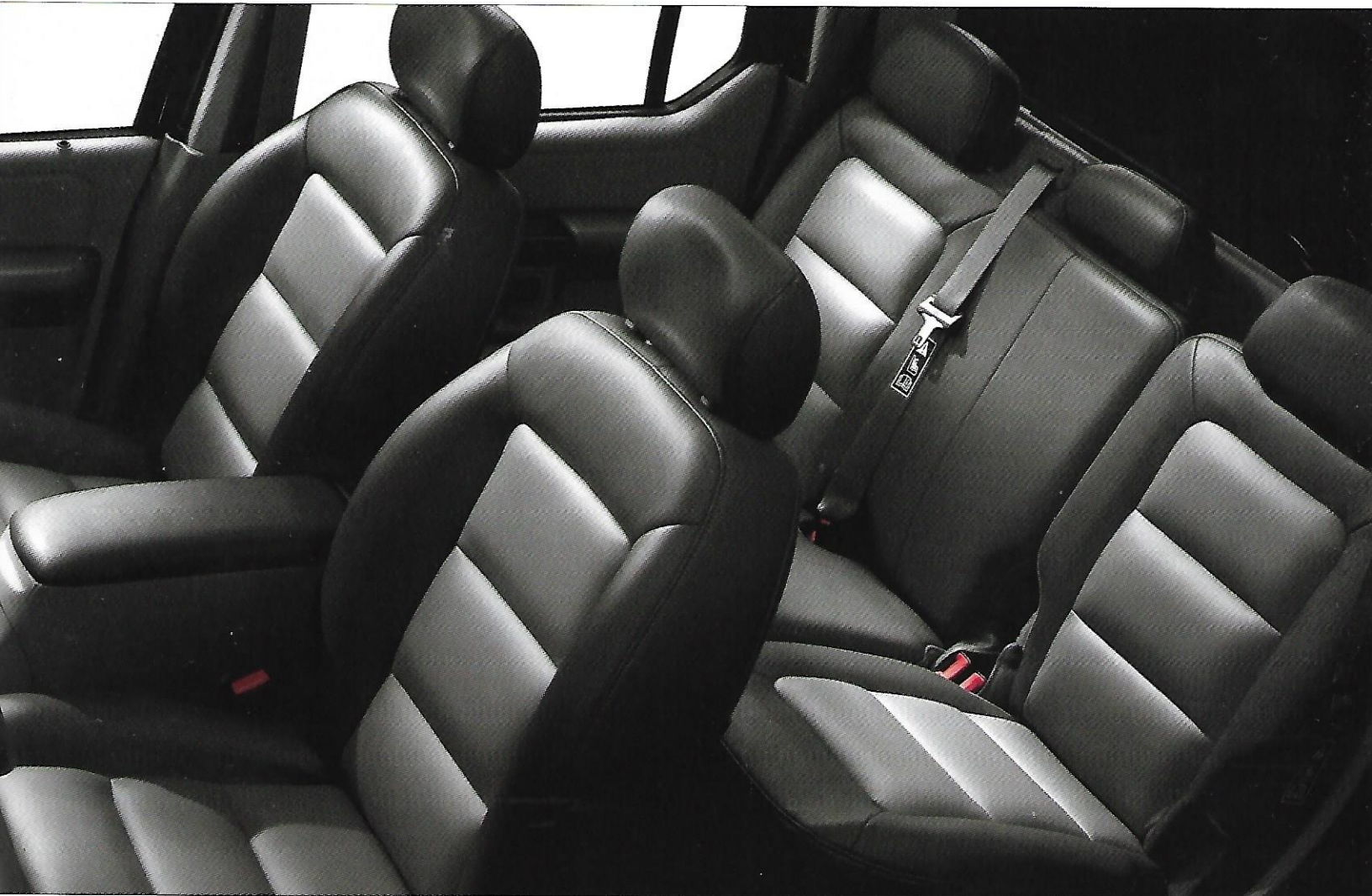




## Expand Your Audio Options

Audiophile AM/FM Sound System – Available on XLT and XLT Premium, this system features a 6-disc in-dash CD changer with MP3 capability\* and 290 watts of peak audio power. Add the dealer-installed SIRIUS Satellite Radio\*\* kit and service to enjoy over 120 channels of music and entertainment.

\*MP3 feature is late availability. \*\*Call SIRIUS toll-free at (888) 539-7474 for more information. See your Ford Dealer for installation and activation details.



## Get Your Facts Straight

Instrument Cluster – Sport Trac's extensive array of easy-to-read gauges keeps you in the know with sporty white facing by day and a green luminescent glow by night. A leather-wrapped tilt steering wheel is standard on XLT, XLT Premium and Adrenalin.

Explorer Sport Trac XLT Premium  
Two-Tone Flint Interior  
available leather-trimmed seats

# Specifications

## MODEL HIGHLIGHTS



### XLS

Platinum molded-in-color front and rear bumpers and lower bodyside moldings • 16" painted cast-aluminum wheels • Black fold-away sideview mirrors • Black door handles • Black texturized rubber floor covering • Black urethane steering wheel • Floor console with removable soft-pack storage bag • Two-tone cloth bucket seats • 60-watt AM/FM stereo/single-CD player with MP3 capability\* and 4 speakers



### XLT

Body-color door handles • Remote keyless entry system with driver's door keypad • Black power, fold-away sideview mirrors • Berber carpeted heavy-duty floor mats • Color-keyed leather-wrapped steering wheel • Tilt steering column • Speed control • Autolock



### XLT Premium

Body-color front and rear bumpers and lower bodyside moldings • Fog lamps • Automatic headlamps • Step bars with Black painted accents • 16" 5-spoke cast-aluminum wheels • Tow hooks (4x4 only) • Overhead console • High-series floor console with outside temperature display and compass • 8-way power driver's seat including power lumbar support



### Adrenalin

510-watt Pioneer® Ultimate Audio AM/FM stereo/6-disc in-dash CD changer with MP3 capability and 9 speakers including 8" subwoofer • 16" 5-spoke chromed wheels • Step bars with chromed accents • Two-tone cloth bucket seats with "Adrenalin" logo

## STANDARD FEATURES

### Mechanical

4.0L SOHC V6 engine  
5-speed automatic transmission  
4-wheel power disc brakes with Anti-lock Brake System (ABS)  
100,000-mile tune-up interval\*\*  
Body-on-frame construction  
Electronic 2-speed shift-on-the-fly 4-wheel-drive system (4x4 models only)  
Fuel tank – 22.5-gallon capacity  
Power rack-and-pinion steering  
Rear-wheel drive  
Stabilizer bars – Front and rear  
Suspension – Front: independent Short- and Long-Arm with torsion bars; rear: 2-stage leaf springs  
Transfer case skid plate (4x4 models only)

### Safety/Security

Airbags† – Driver and front-passenger  
Battery saver  
Belt-Minder® safety belt reminder  
Headlamps-on alert chime  
Height-adjustable shoulder safety belts – 1st and 2nd row  
LATCH – Lower anchors and tether anchors for child-safety seats for rear outboard positions  
Locking tailgate  
Safety belt energy-management retractors – Front  
Safety belt pretensioners – Front  
Safety belts – 3-point for all positions  
SecuriLock® passive anti-theft system  
Side-impact door beams

### Seating

Front cloth bucket seats with 2-way adjustable head restraints  
Rear cloth 60/40 split-bench seat with adjustable head restraints

### Interior

Air conditioning  
AM/FM stereo/single-CD player with MP3 capability,\* clock and 4 speakers (60-watt)  
Assist handles – 2 front  
Center floor console with 4 cupholders, padded armrest and convenience clip  
Floor covering – Black texturized rubber  
Power door locks with child-safety rear door locks  
Power points – 1 in front, 1 in cargo area  
Power rear window with anti-pinch feature  
Power windows – With one-touch-down driver's-side feature  
Tachometer

### Exterior

Cargo bed – Rustproof composite material  
Cargo tie-down hooks – 4 in cargo bed, 6 on cargo bed exterior  
Lower bodyside moldings – Platinum molded-in-color on XLS and XLT, painted body-color on XLT Premium and Adrenalin  
Privacy glass – Rear doors and rear window  
Roof rails – Black  
Solar-tinted glass – Windshield and front doors  
Trailer tow – Rear step bumper with Class II rating and 4-pin connector  
Windshield wipers – Speed-sensitive intermittent with washer

\*MP3 feature is late availability.

\*\*Under normal driving conditions with routine fluid and filter changes.

†Always wear your safety belt and secure children in the rear seat.

## MODEL-SPECIFIC FEATURES & OPTIONS

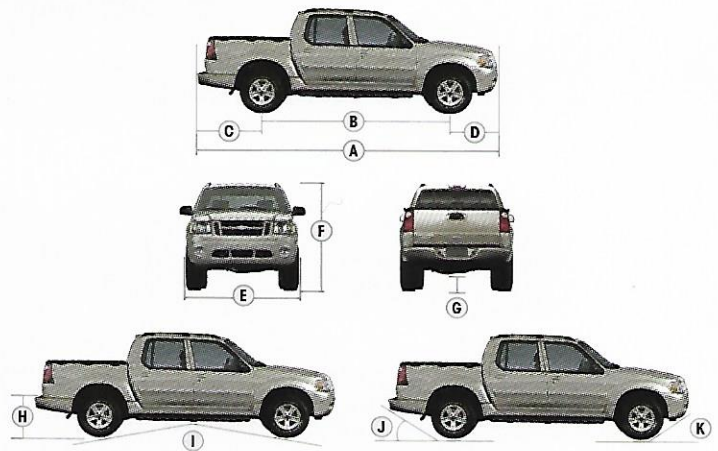
XLS 4x2 or 4x4		XLT 4x2 or 4x4		XLT Premium 4x2 or 4x4		Adrenalin 4x2 or 4x4	
<b>Mechanical</b>							
●	●	—	—	—	—	—	—
—	●	●	—	—	—	—	—
—	—	—	●	—	—	—	—
●	●	—	—	—	—	—	—
—	●	—	—	—	—	—	—
—	○	—	—	—	—	—	—
—	●	●	●	—	—	—	—
○	○	—	—	—	—	—	—
—	●	○	○	—	—	—	—
<b>Safety/Security</b>							
○	○	○	○	○	○	○	○
<b>Interior</b>							
—	○	●	●	—	—	—	—
<b>Comfort Group</b> - Low-back front cloth bucket seats with 2-way adjustable head restraints - 8-way power driver's seat including power lumbar support - 2-way manual passenger's seat - High-series floor console with rear climate controls (replaces standard center console) - Overhead console with outside temperature display and compass - Autolamp (automatic on/off headlamps) - Auto-dimming rearview mirror							
—	—	○	○	—	—	—	—
<b>Leather Seating Group</b> - Low-back leather-trimmed two-tone bucket seats with 2-way adjustable head restraints - 8-way power driver and front-passenger seats including power lumbar support - Heated driver and front-passenger seats - Two-tone appearance with dark bolsters and light inserts							
—	●	●	●	—	—	—	—
<b>Convenience Group</b> - Autolock/relock - Leather-wrapped steering wheel - Remote keyless entry system with driver's door keyless entry keypad - Speed control - Tilt steering wheel - Color-keyed berber carpeted floor mats (front and rear) - Black, dual fold-away power sideview mirrors							
—	○	○	—	—	—	—	—
Premium AM/FM stereo/cassette/single-CD player with MP3 capability* and 4 speakers (80-watt)							
—	○	○	—	—	—	—	—
Audiophile Sound System with AM/FM stereo/6-disc in-dash CD changer with MP3 capability* (290-watt)							
—	—	—	●	—	—	—	—
Pioneer Ultimate Audio System with AM/FM stereo/6-disc in-dash CD changer with MP3 capability, 8 speakers and an 8" subwoofer (510-watt)							
<b>Exterior</b>							
○	○	○	○	—	—	—	—
Cargo cage bed extender							
—	●	●	●	—	—	—	—
Fog lamps <sup>††</sup>							
—	●	●	●	—	—	—	—
Front tow hooks <sup>††</sup> – Black (4x4 models only)							
○	○	○	○	—	—	—	—
Hard tonneau cover – Folding							
—	○	○	○	—	—	—	—
Power moonroof <sup>§</sup>							
—	●	●	●	—	—	—	—
Power sideview mirrors – Black, fold-away							

● Standard ● Select Availability ○ Optional — Not Available

<sup>††</sup>Available as part of Premium Sport Group on XLT. <sup>§</sup>Requires Comfort Group on XLT.

XLS 4x2 or 4x4		XLT 4x2 or 4x4		XLT Premium 4x2 or 4x4		Adrenalin 4x2 or 4x4	
<b>Exterior (continued)</b>							
Premium Sport Group							
—	○	—	—	—	—	—	—
- 16" 5-spoke cast-aluminum wheels							
- Fog lamps							
- Front tow hooks (4x4 models only)							
- P255/70R16 all-terrain OWL tires							
- Side step bars – Platinum accents							
- 4.10:1 rear-axle ratio							
—	●	●	●	—	—	—	—
Side step bars – Platinum accents on XLT, <sup>††</sup> black on XLT Premium, chromed on Adrenalin							

## DIMENSIONS

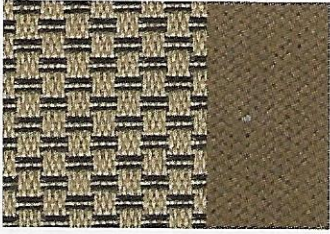


Exterior	4x2/4x4
A. Overall length	205.9"
B. Wheelbase	125.9"
C. Overhang – Rear	45.4"
D. Overhang – Front	34.6"
E. Overall width	71.8"
F. Height	70.5"
G. Ground clearance (rear axle)	7.9"
H. Ground to open tailgate height	32.5"/32.6"
I. Ramp breakover angle	16.0°/17.7°
J. Angle of departure	23.5°
K. Angle of approach	26.9°/26.7°

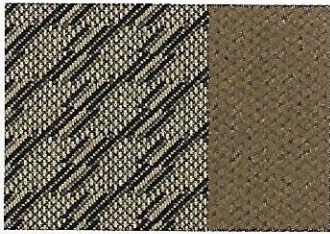
Interior	
<b>1st row</b>	
Head room	39.4"
Shoulder room	56.3"
Hip room	53.1"
Leg room	42.5"
<b>2nd row</b>	
Head room	38.6"
Shoulder room	56.9"
Hip room	52.8"
Leg room	37.8"
<b>Cargo Area</b>	
Maximum cargo volume (cu. ft.)	29.6
Length at floor	50.0"
Width at wheelhouse	41.2"
Width at top of bed	53.8"
Height with molding	19.7"

Cargo and load capacity limited by weight and weight distribution.

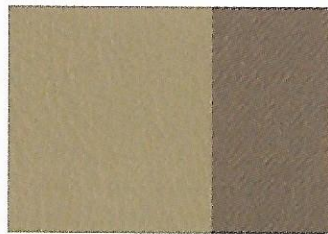
## INTERIOR COLORS



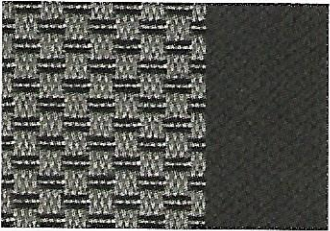
Pebble Cloth  
Standard on XLS



Pebble Cloth  
Standard on XLT



Pebble Leather  
Optional on XLT Premium and Adrenalin



Flint Cloth  
Standard on XLS



Flint Cloth  
Standard on XLT



Flint Leather  
Optional on XLT Premium and Adrenalin

Pebble	
Flint	
<b>XLS</b>	
● ●	Oxford White
● ●	Pueblo Gold Metallic
● ●	Bright Red*
● ●	Silver Birch Metallic
● ●	Dark Stone Metallic*
● ●	Black
<b>XLT/XLT Premium/Adrenalin</b>	
● ●	Oxford White
● ●	Pueblo Gold Metallic
● ●	Redfire Metallic
● ●	Bright Red*
● ●	Dark Blue Pearl Metallic
● ●	Silver Birch Metallic
● ●	Dark Stone Metallic*
● ●	Black

\*New for 2005.

## GENUINE FORD ACCESSORIES

See your dealer for these and other great dealer-installed accessories or visit us at [fordaccessoriesstore.com](http://fordaccessoriesstore.com).



### Power From Afar

Remote Start – Stand back, way back, and still start your Sport Trac with this helpful accessory. It turns on the ignition from up to 500 ft. away.



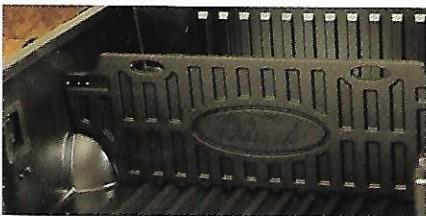
### Adapts To Your Needs

Smoker's Pack – If you're in need of an ashtray and lighter, just add this convenient pack. The ashtray is even removable for easy cleaning.



### Maximum Carrying Capability

Hitch-Mounted Bike Rack – Hittin' the trails with friends? You can load up to 4 bikes on this handy rack, leaving the cargo bed open for gear.



### Doin' Double Duty

Bed Divider – This sturdy accessory locks in place to split the cargo bed into 2 sections. Used with the optional folding hard tonneau cover, it also provides locking storage up front.



### Keep It Under Wraps

Soft Tonneau Cover – Not into the hard stuff, but you still want your bed covered? This durable soft cover's just the ticket.



### Effortless Calling

Mobile-Ease Hands-Free Communication System – Place and receive hands-free calls through the audio system with this Bluetooth® technology and your Bluetooth-equipped cell phone.

## EXTERIOR COLORS



Oxford White



Pueblo Gold Metallic



Redfire Metallic



Bright Red



Dark Blue Pearl Metallic



Silver Birch Metallic



Dark Stone Metallic



Black

Sport Trac XLT Premium shown. Ford uses clearcoat paint for beauty and protection. Colors shown are representative only. Not all colors are available on all models. See your dealer for actual paint/trim options.

## WHEELS



16" 5-Spoke  
Cast-Aluminum Wheel  
Standard on XLS/XLT



16" 5-Spoke  
Cast-Aluminum Wheel  
Standard on XLT Premium,  
Optional on XLT



16" 5-Spoke  
Chromed Wheel  
Standard on Adrenalin



Get the ride you want. Whether you plan to lease or finance, you'll find the choices that are right for you at Ford Credit. Ask your Ford Dealer for details or check us out at [fordcredit.com](http://fordcredit.com).



For a purchase or lease, the Ford **Extended Service Plan (ESP)** gives you "Peace-of-Mind" protection designed to cover key vehicle components and protect you from the cost of unexpected repairs. Ask your dealer for an ESP backed by Ford Motor Company and honored at all Ford dealerships.



**Ford Motor Company Insurance Services**

Choose the insurance program that's designed for your vehicle - Ford Motor Company Insurance Services. Our program helps you receive the rates and service you deserve. Call 1-877-367-3847 or visit us at [fordvip.com](http://fordvip.com) for a no-obligation quote. Insurance offered by American Road Services Company (in CA, American Road Insurance Agency), a licensed agency and subsidiary of Ford Motor Company.



Ford is working closely with the **National Park Foundation** to help develop innovative transportation and environmental solutions that enable visitors to enjoy America's National Parks without compromising their beauty.



Ford is a proud Partner in Education and Founding Member of **Tread Lightly!** Through Education, Restoration and Research, Tread Lightly! empowers generations to enjoy the outdoors responsibly.

"FORD EXPLORER SPORT TRAC IS STILL AN INNOVATIVE DESIGN PACKED WITH SMALL REFINEMENTS THAT MAKE LIFE MORE CONVENIENT, BOTH IN TOWN AND IN THE BACKCOUNTRY. ITS WILLING ENGINE, SOLID FRAME, AND WELL-ENGINEERED BODY MAKE EXPLORER SPORT TRAC AN IMPRESSIVE SPORT-UTILITY TRUCK."

— *NewCarTestDrive.com*



©2004 Ford Motor Company 05EXSTCAT  
Litho in USA on recycled paper (20% post consumer)

[fordvehicles.com](http://fordvehicles.com)