

 CORVETTE

06



2

DAYTONA SUNSET ORANGE METALLIC

NOW PLAYING ON A ROAD NEAR YOU.

300 km/h*



3

For more information about Corvette visit
our Web site at corvette.gmcanada.com

Corvette combines awesome power and razor-sharp control in your choice of Coupe, Convertible or new fixed-roof Z06 form. Whichever model you select, you're in for an experience like no other. • Coupe and Convertible are powered by a 400 horsepower LS2

aluminum-block V8 that's among the most advanced overhead valve engines in the world. • Coupe performance highlights: 0-96 km/h (60 mph) in 4.2 seconds...a quarter mile time of 12.6 seconds...and a top speed of 300 km/h (186 mph). • Standard Active Handling and a choice of

three taut suspensions provide tremendous roadholding and agility. • Corvette's precision build quality achieves luxury sedan standards. • Coupe models sport a one-piece removable roof panel for open-air driving.

*Corvette 300 km/h (186 mph) test-track top speed.

4

MACHINE SILVER METALLIC



18.0 seconds



HOLD ON TO YOUR HAT.

For the purist, the only true sports car is one with a roof that goes down. With all the performance hardware of Corvette Coupe and the convenience of a power folding top, Corvette Convertible is as pure as they come. • For a quick, easy transition to open-air driving, the power top features

a one-button control that cycles the top down in just 18 seconds. • A standard tonneau cover gives a clean, finished, top-down appearance. • The large fully-enclosed trunk easily handles two golf bags. • Indexed side-window glass and a rear bulkhead between the trunk and passenger

compartment help reduce wind and road noise. • A glass rear window with electric defroster assures excellent rearward visibility in all conditions.

400 horsepower

HIGH COMPRESSION.

Corvette Coupe and Convertible sport a standard LS2 V8 with a high 10.9:1 compression ratio – a design feature that contributes to enhanced power and overall efficiency. The LS2 also replaces the traditional throttle cable with advanced drive-by-wire Electronic Throttle Control for a smooth, linear response.

DEEP BREATHER.

The LS2 has 30 percent better air intake than the 5th-generation Corvette engine, thanks to a low-restriction air cleaner, a 90 mm throttle body and an 85 mm mass airflow sensor. Other essential components include a low-restriction intake manifold and a high-lift cam that maximizes flow into and out of the combustion chambers.

6

LIGHTWEIGHT BLOCK AND HEADS.

The LS2 V8 packs 6.0 litres of displacement into a very compact small-block engine. Thanks to an aluminum block and cylinder heads, it's also a surprisingly lightweight powerplant, which contributes to Corvette's blistering performance and agility. The LS2 puts out more low-end torque than the LS6 engine in the previous-generation Z06.

LOW MAINTENANCE.

*In addition to its amazing performance and efficiency, the LS2 V8 is a low-maintenance design. In normal service, its first tune-up isn't required until the odometer hits 166,000 km.**

*Maintenance needs vary with use and driving conditions. Please refer to the Owner's Manual for more information.

MONTEREY RED METALLIC



Corvettes have always been known for thrilling V8 power. Even by that high standard, the 2006 Corvette Coupe and Convertible are something special. • Vital statistics: 6 litres of displacement, 400 horsepower and 400 pounds-feet of torque. • Compact 90-degree overhead-valve V8 architecture – a Corvette tradition. • Outstanding fuel economy – no other car with this kind of power even comes close.**

**Fuel economy estimates based on GM testing.

6-SPEED

2 choices



PADDLE SHIFTING.

For an even greater level of performance and control, the 2006 Corvette Coupe and Convertible can be equipped with a new available six-speed automatic transmission with F1-style Paddle Shifting and Automatic Modes. Push either of two paddles on the steering wheel to upshift early for maximum fuel economy, or push the engine to the redline for maximum performance. Squeeze the paddle towards you for lightning-fast downshifts all the way from sixth gear to first.

NEW-FOR-2006 6-SPEED AUTOMATIC.

Corvette's newly available six-speed automatic transmission combines total control and total convenience. Select 'S' Mode and the transmission automatically adopts a more aggressive shift pattern for higher performance. 'S' mode also activates the steering wheel paddle shifters, allowing you to choose precisely the right gear for every situation, just as you would with a conventional manual gearbox. In 'D' mode the transmission functions as a conventional automatic and requires no further input. The current gear is always displayed in the Head-Up Display (HUD).



7



6-speed manual. The standard Corvette transmission is a short-throw six-speed manual engineered for quick, precise shifting. Double-cone synchronizers and a light-action clutch reduce shift effort. To help achieve a near-50/50 front/rear weight distribution, the transmission is rear-mounted and connected to the engine by a torque tube. Revised gear ratios deliver optimal acceleration on models equipped with the Z51 Performance Package.



8

BLACK

Corvette interior, shown with available equipment. Interior colours listed at right.

IT'S ALL
RIGHT THERE.

If it adds to your control or your driving enjoyment, it's present and accounted for in the Corvette interior.

- Standard heated sport buckets feature 6-way power adjustments, leather seating surfaces and dual-density foam padding for excellent support and long-distance comfort.
- Available DVD navigation system* with voice

recognition provides directions audibly or via the Head-Up Display.

- Superb standard audio system with 6-disc in-dash CD changer, MP3 playback and Bose 7-speaker sound system, standard on Coupe and Convertible, available on Z06.
- The central gauge cluster is backlit by LEDs, for outstanding visibility even in direct sunlight.

*At time of print, detailed map coverage is available for most major urban areas of the United States and for certain metropolitan areas of Canada (Vancouver, Calgary, Edmonton, Winnipeg, Windsor, London, Toronto, Ottawa, Montreal, Quebec City and Halifax). Coverage is significantly limited outside these areas. Choose the factory navigation option and you will receive an updated navigation DVD each of the first two years following your purchase.

FIRST class

9

INTERIOR COLOURS

EBONY

RED

CASHMERE

TITANIUM



MAGNETIC SELECTIVE RIDE CONTROL

With the available Magnetic Selective Ride Control suspension, a switch on the console allows you to toggle between 'Tour' and 'Sport' settings.



ONSTAR

The available OnStar System delivers a host of services, including Stolen Vehicle Tracking and Automatic Notification of Air Bag deployment.



HEAD-UP DISPLAY

Standard aircraft-inspired Head-Up Display (HUD) projects data on speed, engine rpm and more onto the inner surface of the windshield.



NO MORE KEYS

With keyless entry and push-button start, just walk up to the car with the fob in your pocket, get in, press the ignition button and go.



6-SPEED SHIFTER

The standard 6-speed manual transmission shifter is a short-throw design that's finished in leather and brushed aluminum.



Canadian Ron Fellows has driven the Corvette factory race car to an impressive series of victories, including a win at the 24 Hours of Daytona and two consecutive GTS class wins at Le Mans. He and Corvette have also captured the American Le Mans GTS Series championships in 2002, 2003 and 2004.



VELOCITY YELLOW

The new European-specification Z06 facing page (not available in Canada) is built to similar performance parameters as the Canadian version with slight exterior trim differences.

THE MOST. EVER.

505 horsepower



11

The new 2006 Corvette Z06 isn't just the most powerful production Corvette ever. It's the highest-performance GM production vehicle in history. • The new Z06 was co-developed with the C6.R race car, which regularly competes against Ferraris, Aston Martins and Maseratis.

Corvette finished 1-2 in its class at the 2005 24 Hours of Le Mans for the fourth time in the last 5 years. • Race-inspired features include a 7 litre, 505 horsepower LS7 small-block V8 with dry-sump lubrication, massive disc brakes and carbon-fibre body panels. • The Z06's power-to-weight ratio is superior

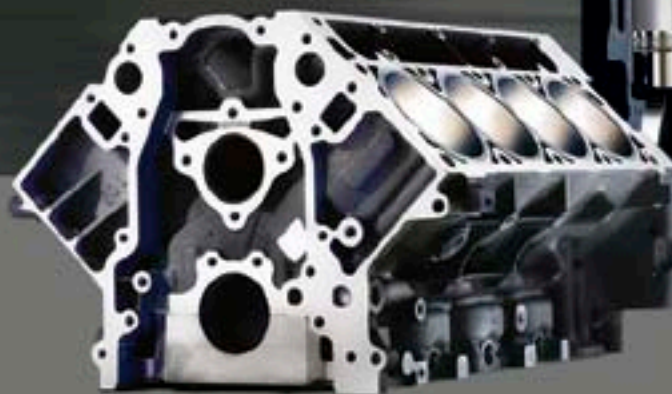
to the Ferrari 575 Maranello, Porsche 911 GT2, Lamborghini Murcielago, Porsche Turbo, Lamborghini Gallardo, Aston Martin Vanquish S, Dodge Viper, and Ford GT. • Long story short: the new Z06 is a supercar.

315 km/h+*



12

LOOK UP.
LOOK WAY UP.



Corvette Z06's LS7 engine delivers power and responsiveness competitive with the world's finest elite sports car powerplants.

• The aluminum-block engine displaces a full 7 litres. For the traditionalist, that's 427 cubic inches. • Outputs are 505 horsepower and 470 pounds-feet of torque. • Redline: 7000 rpm. • 0-96 km/h (60 mph): 3.7 seconds – in first gear.

• Quarter mile time of 11.7 seconds at 200 km/h (125 mph). • Top speed over 315 km/h (195 mph)* • Lateral acceleration on the skid pad at 1.04 g. • For excellent durability in hard driving, the intake valves and connecting rods are fabricated from strong, lightweight titanium. • The LS7's camshaft has the highest lift ever in a GM small-block V8. • A dry-sump

oil system helps maintain proper lubrication during high-speed cornering and in heavy braking manoeuvres. • Hydroformed four-into-one racing-style headers minimize exhaust back pressure. • The LS7 engine is hand-built by a dedicated team at GM's Performance Build Center.

*Corvette Z06 318 km/h (198 mph) test-track top speed.

Z06

the technology

ALUMINUM FRAME.

A Z06-exclusive aluminum frame combines with a magnesium roof structure and engine cradle to reduce vehicle mass dramatically. The aluminum body structure weighs just 126 kg (278 lb.), or about two thirds of the weight of the Corvette Coupe structure. The Z06 body achieves a 25 Hz torsional bending frequency, indicating excellent rigidity.

1421 KG (3132 LB.) CURB WEIGHT.

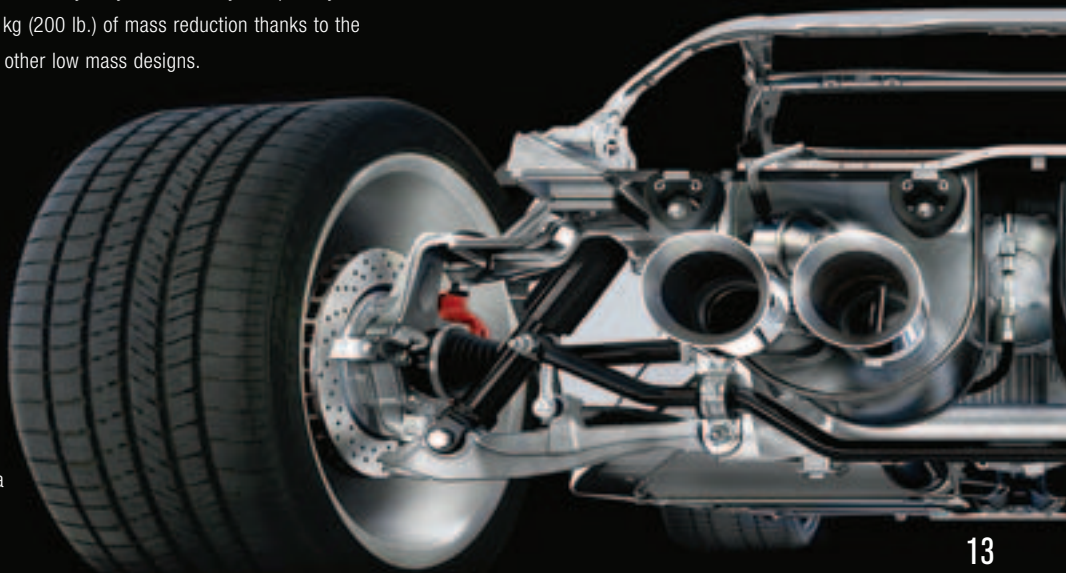
In spite of its numerous high-performance upgrades, technologies such as heavy-duty brakes, a dry-sump oil system and auxiliary coolers add mass. But this mass gain was offset with 90 kg (200 lb.) of mass reduction thanks to the aluminum frame, magnesium cradle, carbon-fibre parts, fixed roof and other low mass designs.

MASSIVE BRAKING POWER.

The brakes have been specially engineered to handle the enormous speed potential of the Corvette Z06. Monoblock six-piston front calipers and four-piston rear calipers are used, and each piston has its own pad. Pistons operate in pairs, applying equal pressure to both sides of the rotor. The front rotors measure 356 mm (14 in.); the rears, 340 mm (13.4 in.). All are vented and cross-drilled.

CARBON-FIBRE PANELS.

Like its C6.R counterpart, the new Z06 features light, strong carbon-fibre front fenders. Layers of carbon fibre sandwiched around a balsa wood core are used to create strong, lightweight floor panels.



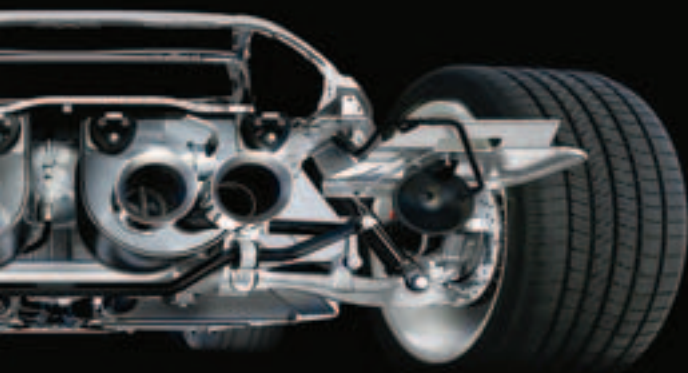
13

BI-MODAL EXHAUST.

At idle and during moderate operation, the exhaust note of the LS7 engine is surprisingly civilized, thanks to a vacuum-operated valve that varies sound based on engine load. At wide-open throttle, the sound emanating from the four trumpet-shaped exhaust outlets is nothing short of sensational.

GOODYEAR EAGLE F1 SUPERCAR TIRES.

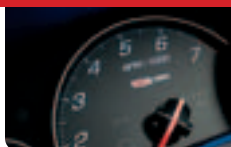
Corvette Z06 puts more rubber on the road than any production Corvette before it. The front tires are 275/35ZR18s, while at the rear, Corvette Z06 rides on 325/30ZR19 rubber. All tires are Goodyear Eagle F1 Supercar Extended Mobility tires designed to run for up to 160 km with no air pressure whatsoever. The 'Z' speed indication shows that these tires are rated to 330 km/h (205 mph).



Z06 505 HORSEPOWER BADGE



Z06-EMBROIDERED SEATS



Z06-EXCLUSIVE GAUGES



FRONT AIR INLET

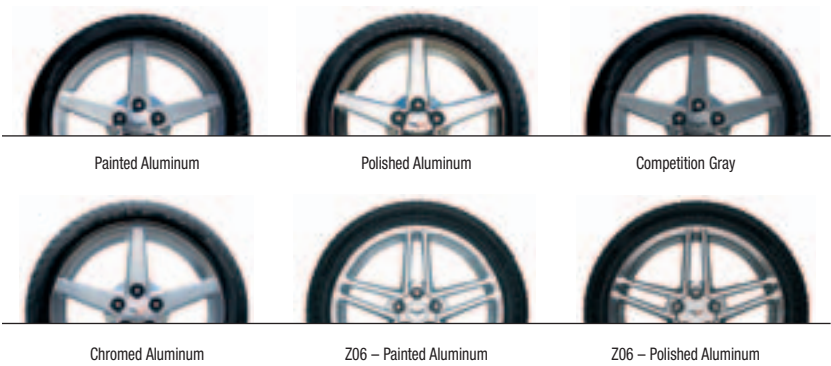


DRY-SUMP SYSTEM



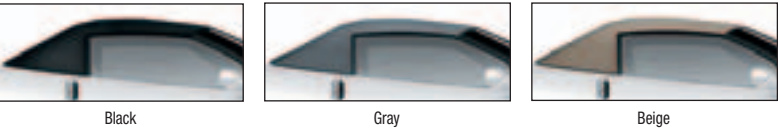
CROSS-DRILLED ROTORS

WHEELS



Corvette Coupe and Convertible are fitted with five-spoke flangeless aluminum wheels in a choice of four finishes. The standard wheels feature an attractive painted finish. Polished, chrome and Competition Gray finishes are also available. Corvette Z06 features ten-spoke flangeless aluminum wheels in a choice of standard painted and available polished finishes.

CONVERTIBLE TOP COLOURS



EXTERIOR COLOURS	COUPE & CONVERTIBLE				Z06		
	EBONY	RED	CASHMERE	TITANIUM	EBONY	EBONY/ RED	EBONY/ TITANIUM
	Available Interior Colour Convertible Top Colour						
10 – Arctic White	■ Black/Gray	■ Black	■ Black/Beige	■ Black/Gray			
19 – Le Mans Blue Metallic*	■ Black/Gray		■ Black/Beige	■ Black/Gray	■	■	■
41 – Black	■ all	■ Black	■ Black/Beige	■ Black/Gray	■	■	■
45 – Velocity Yellow*	■ Black/Gray		■ Black/Beige	■ Black/Gray	■		■
67 – Machine Silver Metallic	■ Black/Gray	■ Black	■ Black/Beige	■ Black/Gray	■	■	■
71 – Daytona Sunset Orange Metallic	■ Black/Gray		■ Black/Beige	■ Black/Gray	■		■
74 – Victory Red†	■ Black/Gray	■ Black	■ Black/Beige	■ Black/Gray	■	■	■
80 – Monterey Red Metallic*	■ Black/Gray	■ Black	■ Black/Beige	■ Black/Gray			

*Available at extra cost.

THE GM TOTAL™ WARRANTY:

The GM TOTAL™ Warranty is your promise of total warranty protection. It covers every new Chevrolet Corvette for 3 years or 60,000 km.* Complete vehicle repairs are covered,** including parts and labour, with no deductible. The warranty includes:

- 3-year/60,000 km* complete vehicle repair coverage
- 6-year/160,000 km* corrosion perforation coverage
- 8-year/130,000 km* coverage on catalytic converters and powertrain control modules (PCMs).

*Whichever comes first. **To correct any defects in material or workmanship occurring during the warranty period. Regular maintenance is not included, nor is excessive wear and tear caused by reckless or negligent driving.

OTHER OWNERSHIP PRIVILEGES AND PROGRAMS:

- **Roadside Assistance** – 24/7 service via toll-free number during your warranty period, anywhere in Canada or the United States
- **Courtesy Transportation** – may be offered during the warranty period
- **GM Protection Plan (GMPP)** – the only extended services contract backed by the resources and commitment of General Motors, GMPP may be purchased at the time of your sale or lease, or subsequently
- **GM Mobility Program** – you may be eligible for reimbursement of up to \$1000 (taxes included) for adaptive equipment for your GM vehicle
- **GM Accessories** – personalize your vehicle with GM Accessories, specifically engineered for your new GM vehicle
- **GM Goodwrench Service** – with GM-certified technicians and GM-approved parts, nobody knows your GM vehicle better.

TO HELP YOU PURCHASE OR LEASE A NEW VEHICLE:

- **GMAC Financing** – on the spot financing at your GM dealership††
- **GMAC SMARTLEASE** – a smart alternative to traditional financing††
- **The GM Card** – eligible cardholders may be able to redeem up to \$3500 on GM Card® Earnings toward the total purchase price or lease down payment on selected vehicles. For more information on The GM Card please call 1-800-461-3279.†

INFORMATION RESOURCES:

You can find more information about these programs from your GM dealer, or at these information centres:

- The GM Web site at gmcanada.com
- The GM Customer Communication Marketing Centre at 1-800-GM-DRIVE (1-800-463-7483 or 1-800-263-3830 for TDD users) – for information about any GM product or service, including The GM Card and the GM Mobility Program
- For information about GMAC visit gmcanada.com or call 1-800-616-4622.

† Conditions and limitations apply.

†† Subject to eligibility.

A WORD ABOUT THIS BROCHURE

Some of the equipment shown or described throughout this brochure may be available at extra cost. We have tried to make this brochure comprehensive and factual. We reserve the right, however, to make changes at any time, without notice, in prices, colours, materials, equipment, specifications, models and availability. Specifications, dimensions, measurements, ratings and other numbers in this brochure and other printed materials provided at the dealership or affixed to vehicles are approximates based upon design and engineering drawings and prototypes and laboratory tests. Your vehicle may differ due to variations in manufacture and equipment. Since some information may have been adapted since the time of the printing, please check with your Chevrolet dealer for complete details. General Motors of Canada Limited reserves the right to lengthen or shorten the model year for any product, for any reason, or to start and end model years at different times.

PRIVACY STATEMENT

At General Motors of Canada Limited ("GM Canada") we respect your privacy and value our relationship with you. Your personal information will be protected, will never be sold, and will be used only by GM Canada, our affiliates, dealers/retailers, and service suppliers (only to provide services). If you wish to be removed from GM Canada marketing communications; would like to limit only certain marketing communications from us; would like a listing of our specific uses or further information about those with whom your information is shared; or for further information about our Privacy Policy and practices, please contact us at 1-800-GM-DRIVE (1-800-463-7483) or through our Web site at gmcanada.com

A WORD ABOUT ASSEMBLY

Chevrolets are equipped with engines and components produced and assembled by different operating units of General Motors, its subsidiaries and suppliers and these engines and components may change or be obtained from different sources from time to time. All such engines and components are approved for use in Chevrolets. Certain equipment ordered may be unavailable at the time of assembly and we suggest that you verify that your vehicle includes the equipment you ordered, or if there are changes, that they are acceptable to you.

TRADEMARKS

The marks appearing in this Chevrolet Corvette brochure including, but not limited to: General Motors, GM, the GM Canada emblem, the GM Canada Web site address, Chevrolet, Corvette, the Corvette emblem, and their respective logos, emblems, slogans and vehicle model names and body designs; and other marks such as SMARTLEASE, Solar-Ray, Z06, Z51 and TOTAL Warranty are trademarks of General Motors Corporation and/or General Motors of Canada Limited, its subsidiaries, affiliates or licensors.

GMAC is a registered trademark of the General Motors Acceptance Corporation.

OnStar, the OnStar logo and the OnStar button are registered trademarks of the OnStar Corporation.

TheftLock is a registered trademark of Delphi Automotive Systems.

Bose and AudioPilot are registered trademarks or trademarks of the Bose Corporation.

Radio Data System (RDS) is a registered trademark of the U.S. National Association of Broadcasters.

COPYRIGHT

©Copyright 2005 General Motors of Canada Limited. All Rights Reserved. All text, images, graphics, and other materials in this Chevrolet Corvette brochure are subject to the copyright and other intellectual property rights of General Motors Corporation and/or General Motors of Canada Limited. These materials may not be reproduced, distributed or modified without the express written permission of General Motors Corporation and/or General Motors of Canada Limited.

Printed in Canada, August 2005.

SELECTED FEATURES AND OPTIONS

SAFETY AND SECURITY

	Coupe/ Convertible	Z06
Air bags – driver and passenger, frontal includes Passenger Sensing System with automatic air bag suppression	S	S
Air bags – driver and passenger, seat-mounted side-impact	S	0
Door locks – automatic power, programmable, includes lock-out protection	S	S
Headlights – Daytime Running Lights with automatic light control	S	S
Keyless access system – includes push-button start, lock/unlock and Panic feature	S	S
OnStar In-Vehicle Communications and Assistance Service – includes one-year Safe & Sound Plan	0	–
Safety restraints – lower anchors	S	S
Theft-deterrent system – immobilizer and audible/visible alarm	S	S
Traction control – electronic, full-function, all-speed	S	S
Trunk – internal manual trunk entrapment release handle	–/S	–

MECHANICAL

	Coupe/ Convertible	Z06
Active Handling System – integrates chassis, brake and traction control systems	S	S
Axle – limited-slip differential	S	S
Brakes – 4-wheel disc	S	S
Brakes – 4-wheel anti-lock braking system (ABS)	S	S
Drive – rear wheel	S	S
Engine – 6.0L LS2 V8 with SFI – Horsepower – 400 @ 6000 rpm – Torque – 400 lb.-ft. @ 4400 rpm	S	–
Engine – 7.0L LS7 V8 with SFI – Horsepower – 505 @ 6300 rpm – Torque – 470 lb.-ft. @ 4800 rpm	–	S
Engine block heater	S	S
Exhaust system – aluminized stainless steel (rear of catalytic converter), with 3" polished chrome quad outlets	S	–
Exhaust system – aluminized stainless steel (dual mode) with 4" polished chrome quad tips	–	S
Steering – power, rack-and-pinion, speed-sensitive	S	S
Suspension – 4-wheel independent, includes transverse fibreglass leaf springs	S	S
Suspension – Magnetic Selective Ride Control, computer-controlled active suspension system with adjustable shock absorbers ¹	0	–
Transmission – 6-speed manual	S	S
Transmission – 6-speed automatic with paddle shift feature	0	–
Z51 Performance Package – includes specific gear ratios for manual transmission, specific tires, sport suspension with stiffer springs and stabilizer bars, specific shock absorbers, larger cross-drilled rotors and power steering, engine oil and transmission coolers ²	0	–
Z06 Performance Package – includes power steering, engine oil, axle and transmission coolers, stiffer springs and stabilizer bars, specific shock absorbers and tires, larger brakes with 6-piston front and 4-piston rear cross-drilled brake rotors	–	S

EXTERIOR

	Coupe/ Convertible	Z06
Antenna – integrated, hidden	S	S
Body panels – corrosion-proof composite body panels	S	S
Convertible top – power folding includes glass rear-window with defogger	–/S	–
Fog lights	S	S
Glass – Solar-Ray, tinted	S	S
Headlights – Xenon, High-Intensity Discharge low beams, halogen high beams	S	S
Mirrors – power remote control, heated	–	S
Mirrors – power remote control, heated with driver-side electrochromic auto-dimming feature	S	0
Roof – one piece, body-colour removable roof panel	S/–	–
Roof Package – one-piece, transparent removable roof panel	0/–	–
Roof Package – one-piece, transparent and standard body-colour roof panels	0/–	–
Tires – P245/40ZR18 – Front – Extended Mobility (EMT) – P285/35ZR19 – Rear – Extended Mobility (EMT)	S	–
Tires – P275/35ZR18 – Front – Extended Mobility (EMT) – P325/30ZR19 – Rear – Extended Mobility (EMT)	–	S
Wheels – 5-spoke silver painted aluminum (Front – 18" x 8.5" / Rear – 19" x 10")	S	–
Wheels – 10-spoke silver painted aluminum (Front – 18" x 9.5" / Rear – 19" x 12")	–	S
Wheels – 5-spoke polished aluminum (Front – 18" x 8.5" / Rear – 19" x 10")	0	–
Wheels – 5-spoke competition gray painted aluminum (Front – 18" x 8.5" / Rear – 19" x 10")	0	–
Wheels – 5-spoke chromed aluminum (Front – 18" x 8.5" / Rear – 19" x 10")	0	–
Wheels – 10-spoke polished aluminum (Front – 18" x 9.5" / Rear – 19" x 12")	–	0
Windshield wipers – 2-speed with variable delay (intermittent)	S	S

1 Not available with Z51 Performance Handling Package.
2 Not available with Magnetic Selective Ride Control suspension.

INTERIOR

	Coupe/ Convertible	Z06
Air conditioning – automatic, dual-zone, includes exterior temperature display	S	S
Air filtration system – includes pollen filter	S	S
Cargo convenience net	S	0
Console – illuminated, lockable with storage, auxiliary power outlet, fuel-filler door release, ashtray with cigar lighter, armrest and cupholders	S	S
Cruise control – electronic with resume, coast and decelerate/accelerate features	S	S
Defogger – electric rear-window	S	S
Floor mats – carpeted	S	S
Fuel filler door – power remote	S	S
Ignition – keyless, engaged with push-button start	S	S
Instrumentation – analogue speedometer, tachometer, fuel, voltmeter, coolant temperature and oil pressure gauges	S	S
Instrumentation – Driver Information Centre (multi-language), includes GM Oil Life System and tire pressure monitoring system	S	S
Instrumentation – Head-Up Display (HUD), includes readouts for street mode, track mode with G-meter, vehicle speed, tachometer, and key gauge readings	S	S
Mirror – rear-view with dual reading lights	–	S
Mirror – rear-view with electrochromic auto-dimming feature and compass	S	0
Retained accessory power	S	S
Steering column – manual tilt	–	S
Steering column – power telescopic, manual tilt	S	0
Steering wheel – leather-wrapped, 3-spoke	S	S
Sunshades – LH and RH padded; illuminated vanity mirrors	S	S
Trunk/hatch release – power (includes power pull-down hatch latch on Corvette Coupe)	S	S
Universal home remote – 3-channel programmable transmitter	S	0
Windows – driver and passenger with express-down feature	S	S
Memory Package – includes 2-position driver seat, exterior mirrors, sound system, climate control and telescoping steering column	S	0

SEATS

	Coupe/ Convertible	Z06
Seats – bucket seats with perforated leather seating surfaces, power 6-way driver seat and manual 2-way passenger seat adjuster with Z06 embroidery and contrasting stitching	–	S
Seats – sport bucket seats with heated perforated leather seating surfaces, power 6-way driver and passenger adjusters with power lumbar, side bolsters, back angle adjustment and integral head restraints	S	–

SOUND SYSTEMS

	Coupe/ Convertible	Z06
AM/FM stereo with CD player, MP3 playback, auto tone control, Radio Data System (RDS) with 7-speakers and TheftLock	–	S
AM/FM stereo with 6-disc in-dash CD changer, MP3 playback, auto tone control, Radio Data System (RDS) and TheftLock	S	0
AM/FM stereo with DVD based GPS navigation system* with 165 mm (6.5 in.) LCD colour display, touch screen, voice recognition, single CD player ³ , auto tone control, Radio Data System (RDS) and TheftLock	0	0
Bose Premium 7-speaker system with AudioPilot noise compensation technology	S	0 ⁴

3 Deletes 6-disc in-dash CD changer. 4 Included when up-level sound system is specified.
* At time of print, detailed map coverage is available for most major urban areas of the United States and for certain metropolitan areas of Canada (Vancouver, Calgary, Edmonton, Winnipeg, Windsor, London, Toronto, Ottawa, Montreal, Quebec City and Halifax). Coverage is significantly limited outside these areas. Choose the factory navigation option and you will receive an updated navigation DVD each of the first two years following your purchase.

PREFERRED EQUIPMENT GROUP CORVETTE Z06 1SB INCLUDES:

• Driver and passenger, seat-mounted, side-impact air bags • Luggage shade and cargo convenience net • Universal home remote, 3-channel programmable transmitter • Memory Package; includes 2-position memory driver seat, exterior mirrors, sound system, climate control and telescopic steering column • Mirrors, exterior with electrochromic auto-dimming feature, interior rear-view mirror with electrochromic auto-dimming feature and compass • Bucket seats with heated perforated leather seating surfaces • AM/FM stereo with 6-disc in-dash CD changer, MP3 playback, auto tone control, Radio Data System (RDS), TheftLock and Bose Premium 7-speaker sound system with AudioPilot noise compensation technology • Steering column, power telescopic, manual tilt

	Coupe	Convertible	Z06
EXTERIOR, MM (IN.)			
Wheelbase	2685 (105.7)	2685 (105.7)	2685 (105.7)
Length	4435 (174.6)	4435 (174.6)	4460 (175.6)
Width	1844 (72.6)	1844 (72.6)	1928 (75.9)
Height	1245 (49.0)	1247 (49.2)	1245 (49.0)
INTERIOR, MM (IN.)			
Headroom	963 (37.9)	963 (37.9)	963 (37.9)
Legroom	1095 (43.1)	1095 (43.1)	1095 (43.1)
Shoulder room	1403 (55.3)	1403 (55.3)	1403 (55.3)
Hip room	1363 (53.7)	1363 (53.7)	1363 (53.7)
CAPACITIES/WEIGHTS			
Cargo, L (cu. ft.)	634 (22.4)	295 (10.4)	634 (22.4)
Fuel tank, L (imp. gal.)	68 (15.0)	68 (15.0)	68 (15.0)
Curb Weight (est.), kg. (lb.)	1471 (3243)	1479 (3262)	1421 (3132)



Chevrolet is known for building vehicles that deliver excellent value and dependability. One important aspect of Chevrolet value is represented by the advanced safety, security and convenience of OnStar.* OnStar uses advanced communications technology to enhance your peace of mind whenever you're in your Chevrolet. All it takes is a single push of the blue OnStar button usually located on the interior rear-view mirror, in the overhead console, or near the radio display – the button connects you with one of our specially trained OnStar Advisors. They are standing by, ready to provide support 24 hours a day, 365 days a year.

What can OnStar Advisors do for you? They can provide a wealth of information and perform a variety of services, including a remote diagnostic check of your vehicle's engine and electrical components. In an emergency, an Advisor will attempt to locate your vehicle, find out what assistance you need, and notify nearby emergency service providers. And if air bags are deployed in your vehicle, an Advisor will contact you to determine if you are in need of assistance.

Another convenient feature is OnStar Hands-Free Calling, a hands-free, voice-activated wireless technology integrated into your vehicle. It's there in case your hand-held phone is lost, forgotten or has a low battery. Even better, there are no additional monthly fees, or additional long distance and roaming charges. And as a new customer, you will receive 30 complimentary minutes good for two months after activation.

Now you can enjoy the peace of mind that comes with knowing you're doing all you can to help keep you, your family, and your vehicle safe. Just ask the almost 150,000 people who have become OnStar subscribers in Canada. How hard does OnStar work for you? The facts speak for themselves: every month in Canada OnStar Advisors handle an average of 9100 routing calls, 2500 emergency calls, 2600 door unlocks, and 625 Roadside Assistance dispatches.

OnStar offers two different service plans, allowing you to select the services that are most convenient for you. OnStar with one year of the Safe & Sound Plan is available on Corvette Coupe and Convertible models. The available Directions & Connections Plan offers all of the safety and security services included in the Safe & Sound Plan, plus you'll have access to driving directions and information and convenience services and RideAssist. See your dealer for more information on plans and services.

*OnStar services require vehicle electrical system (including battery), wireless service, and GPS satellite signals to be available and operating for features to function properly. Not all OnStar features are available on all vehicles. OnStar Hands-Free Calling requires a Hands-Free enabled vehicle, existing OnStar service contract, and prepaid calling minutes, and is not available in Alaska and some other markets. Calls may be made to the U.S. and Canada only. OnStar voice recognition system may not work with some voices. OnStar acts as a link to existing emergency service providers. Subscription Service Agreement required. Due to the transition of the wireless industry from analogue to digital technology, as of January 1, 2008, OnStar plans to offer service only through equipment that operates on the digital network, which may require the purchase of a system upgrade for eligible vehicles. Call 1.888.4.ONSTAR (1.888.466.7827), TTY 1.877.248.2080 or visit onstar.ca for OnStar's Terms & Conditions, Privacy Policy, and system limitations and details.

A STORY ONLY GENERAL MOTORS CAN TELL.

General Motors' commitment to setting the highest standards in quality, safety, innovation, and fuel efficiency are matched by an equally strong commitment to the community.

DID YOU KNOW?

QUALITY: GM plants swept the J.D. Power Initial Quality Study^{SM*} rankings for North and South America: Gold and Silver Plant Quality Awards for the Canadian Oshawa #2 and #1 car plants, in addition to the Bronze Plant Quality Award for the Hamtramck, Michigan plant.

SAFETY: General Motors is the only automotive manufacturer committed to offering a full range of cars, trucks, and SUVs that provide safety protection before, during and after a collision. GM vehicles are equipped with a range of features and technologies that help drivers avoid collisions, reduce the risk of injury should a collision prove unavoidable, and help you get the assistance you need after a collision.

INNOVATION: GM is at the forefront of automotive technology with breakthrough features such as OnStar and XM Satellite Radio.

FUEL EFFICIENCY: GM offers more cars than any other automaker in Canada that get better than 7.0 L/100 km in highway driving. GM has also won more EnerGuide fuel-efficiency awards than any other car company.

GM IS COMMITTED TO CANADA.

INVESTMENT: GM invests more in Canada than any other car company: The \$2.5 billion Beacon Project represents the largest automotive investment in Canadian history.

EMPLOYMENT: GM directly employs over 20,000 people in Canada – more than any other car company.

DESIGN: GM is the only car company that designs, engineers and builds cars in Canada.

GM IS BEHIND YOU AND YOUR VEHICLE.

GM is equally comprehensive in the way it backs its Chevrolet vehicles. All Chevrolet models include:

- 3-year/60,000 km** complete vehicle repair coverage
- 6-year/160,000 km** corrosion perforation coverage
- 8-year/130,000 km** coverage on catalytic converters and powertrain control modules (PCMs)
- 3-year/60,000 km** 24-hour Roadside Assistance.

*General Motors Corporation – Oshawa #2 (Ontario – Car) was the highest ranked plant, Oshawa #1 (Ontario) was the second ranked plant and Hamtramck, MI was the third ranked plant in North/South America among plants producing vehicles for the U.S. market in J.D. Power and Associates 2005 U.S. Initial Quality StudySM.

Study based on a total of 62,251 U.S. consumer responses indicating owner reported problems during the first 90 days of ownership. www.jdpower.com

**Whichever comes first.



CHEVROLET PONTIAC BUICK GMC CADILLAC SATURN SAAB HUMMER

CHEVROLET  FOR ALL LIFE'S ROADS

gmcanada.com

