

FORD LN-SERIES

600-7000



North America's Medium Truck.

Built Ford Tough with Premium HD Truck Features!

Ford LN-Series Mediums bring to this class of truck many of the quality features that the biggest L-Line trucks have built their reputation upon. They all share a premium tilting fiberglass front end, strong all-welded steel cabs and many more big truck features. And you can specify your choice of thrifty power—gasoline, LP-Gas or diesel.

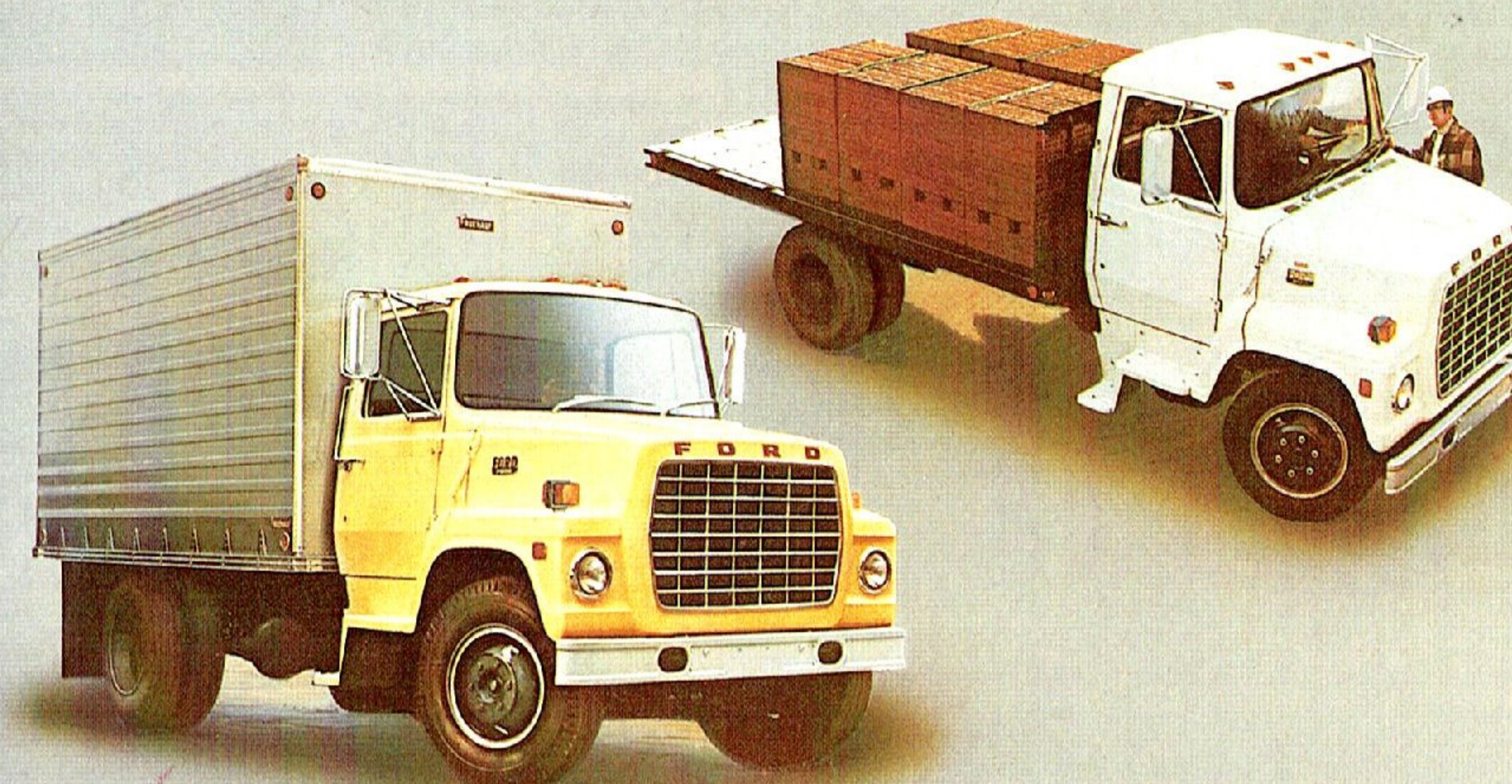
Gasoline or LP-Gas.* Ford LN-Series trucks offer tough gasoline engines specifically designed for Medium truck applications. Efficient

Ford Lima V-8's that have proven themselves most suitable for a wide range of rough jobs. Ford tests show they use less fuel than the engines they replaced. Ford also offers efficient LP-Gas versions of these engines. Engines that provide LP-Gas economy and maintenance advantages at a much smaller initial price premium than comparable diesels.

Diesels. Ford LN-Series offer a solid choice of Caterpillar 3208 Series diesels or DDA 8.2L Fuel Pincher diesels. Diesels that demonstrated

94% better fuel economy in Ford tests than comparably equipped gas-powered trucks in similar applications. And growing diesel popularity is usually reflected in higher resale value at trade-in time.

One good turn after another. Ford short conventionals offer wide-track front axles with large wheel-cut angles for tight turns in traffic and snaking through congested areas. Power steering, standard across the line, is another good turn for maneuvering ease.



Spec it your way. Ford LN-Series offer a wide range of job-tailoring options to fit your truck to your job.

Fuel-efficient. In addition to the many standard Ford features and engine choices that help save fuel, Ford offers a wide choice of fuel-efficient options. Options that include: steel-belted radial tires, and more. An energy-saving fan clutch is standard with all these LN-Series engines.

Ford...one good turn after another is right down your alley to help reduce trip time, improve driver efficiency, save fuel, cut service time, and offer the options you need for optimum utility.

*PEO



FORD LN-Series

Interior Features

The spacious, well-planned and human-engineered interior is designed for optimum driver/passenger comfort. The first thing you're sure to notice in an LN-Series cab is the great feeling of spaciousness.

There's plenty of leg, hip and shoulder room for 3-man seating comfort. Next is the large tinted windshield, chair-high seating and sloping hood design. Now take the wheel: You'll find power steering is standard on all Medium LN-Series models.

A. Custom Interior Trim

The well-appointed, handsome tan/saddle Custom Interior Trim level includes all these features (in addition to or in place of standard items): full-width seat with foam padding trimmed in saddle-colored vinyl with polyknit inserts (heavy-duty black vinyl trim may be retained), dispatch box under seat, padded door trim panels with painted map pockets, armrest on both doors, vinyl-covered hardboard headlining, dual padded vinyl sun visors with tensioning clip, cigarette lighter, saddle-colored vinyl-coated rubber foam-backed floor mat, cab-back insulation panel, left-door courtesy switch, and dual bright aluminum door-mounted grab bars.

Custom Exterior Trim Option

This new, separate option provides (in addition to or in place of standard) bright finish: anodized aluminum grille, grille surround molding, windshield molding, hood latches, and pedestal-mounted cab roof lights—shock mounted.

B. Standard Cab

The Standard Cab interior features hardboard headlining, padded instrument panel, full-width saddle-colored seat (available with all gas and diesel engines) with saddle vinyl trim (heavy-duty black vinyl trim with diesels), black vinyl-covered rubber floor mat, cab-back trim panel is included with optional individual seats, cab back insulation is included on 7000 Series diesels or with optional individual seats, dual door-mounted grab handles, dual saddle-colored vinyl sun visors, and adjustable Orscheln parking brake lever (on/off flipper with air brakes).

Standard exterior features:

Tinted windshield, 7"x16" western mirrors, reversible door and ignition key, pushbutton door handles, and bright cab assist handles.

C. Easy-to-read instrumentation

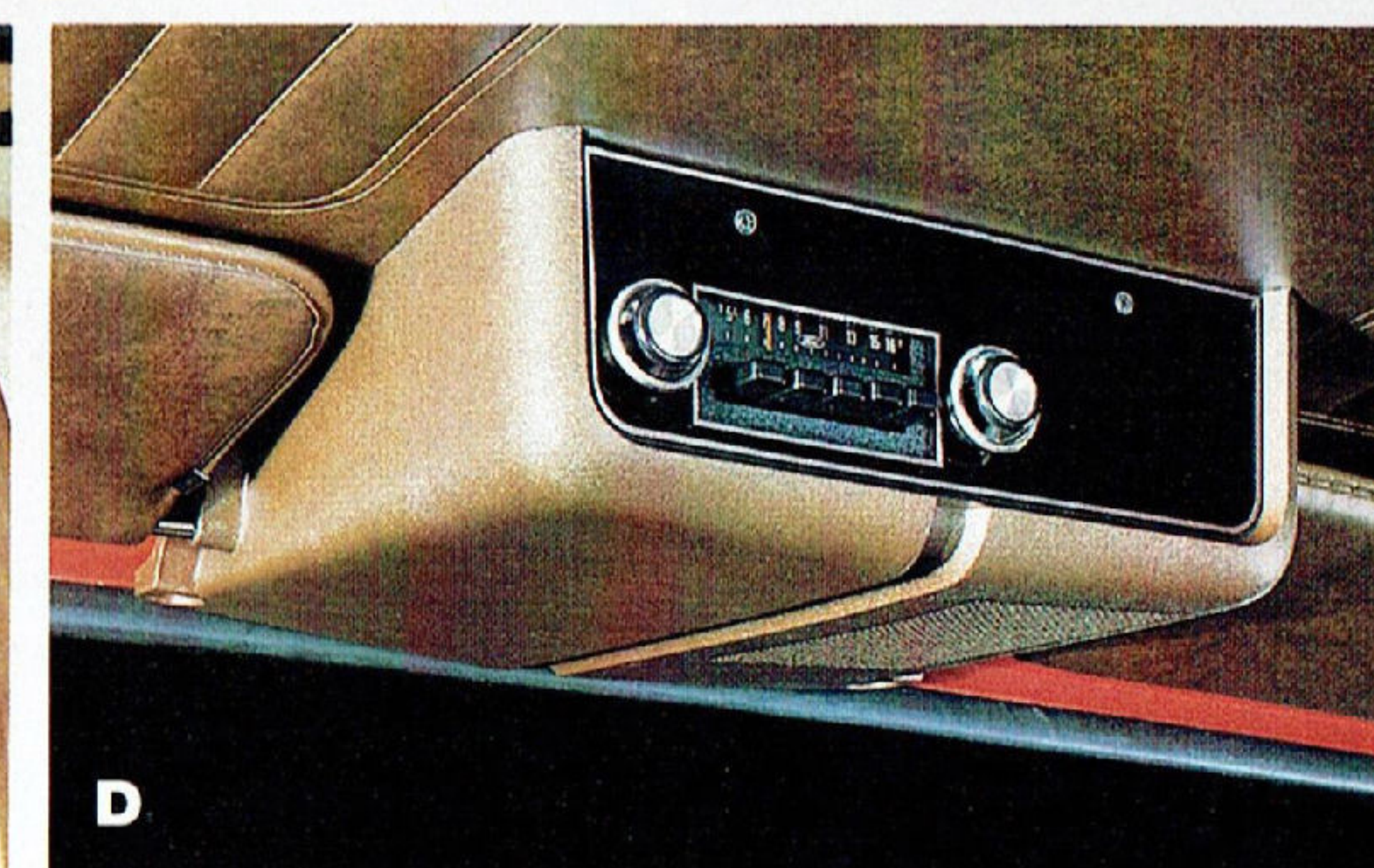
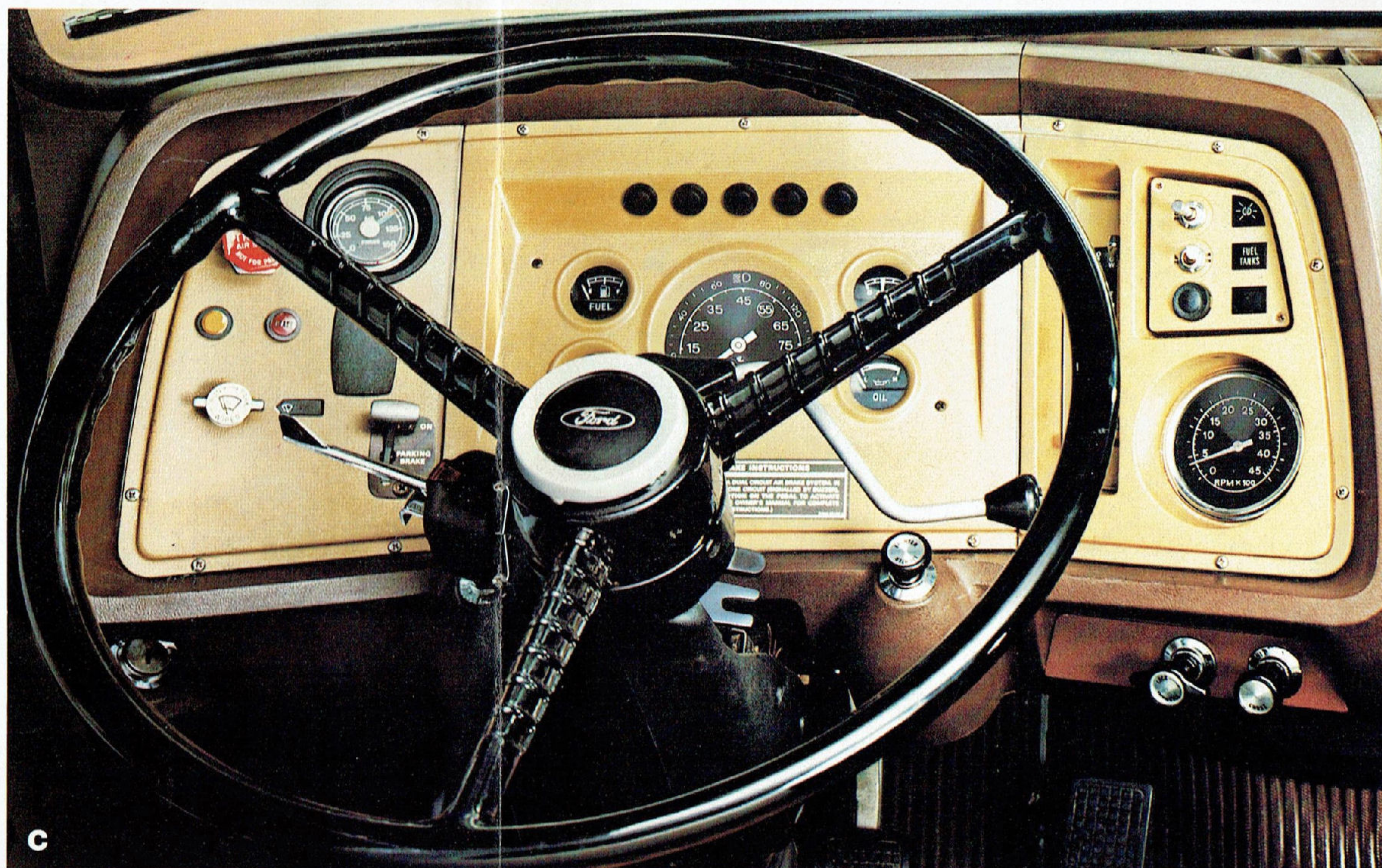
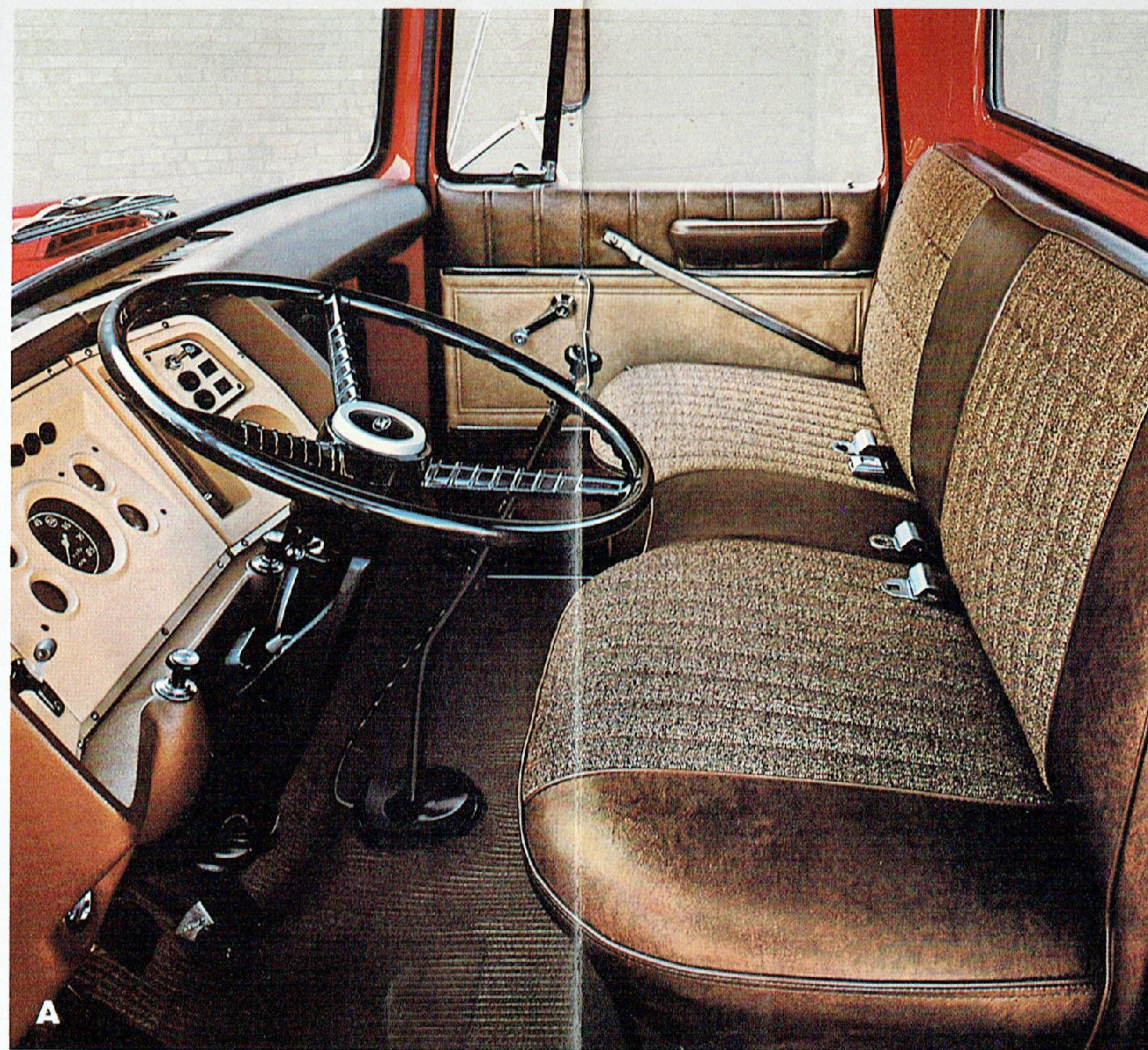
Ford LN-Series cab features an attractive instrument panel with convenient controls. Ammeter, water temperature and oil pressure gauges are all standard. The functional panel is designed in three sections to permit easy servicing by removing only the affected segment. Two-speed electric windshield wipers are standard. Variable-speed air wipers are optional with air brake systems. Air brake model shown with optional tachometer.

D. Roof-mounted radio

Ford AM radio, mounted on the headliner between the sun visors, is one of the many popular Ford LN-Series options as listed on page 7.

E. Individual seat

L-S Unison Lo-Back driver and passenger seats are optional. These individual seats are attractively trimmed in comfortable, breathable, knitted vinyl in tan/saddle.



FORD
LN-Series
features

A. Tilting hood
Hood opens 57° for service ease. And Ford's straight bumper design provides needed tire-to-bumper clearance when the hood is tilted for easy step-in access to the engine.

B. Economical diesel power
The modern 8.2L diesel powered truck is now affordable for many lower mileage applications. And they're easy to drive—beginning with simple key-starting. This diesel is available in naturally aspirated or turbocharged versions.

Substantially better fuel economy
In Ford fuel economy tests, the 8.2L Fuel Pincher diesel demonstrated 94% better fuel economy than comparably equipped gas-powered trucks in similar applications. Your improvement will vary depending on how you use your truck.

Additional fuel savings at idle
The 8.2L "Fuel Pincher" and Caterpillar 3208-Series share the traditional idling efficiency of diesel engines, which normally use only one-third the fuel while idling as comparable gas engines.

C. Caterpillar 3208 Series diesels.
Designed for optimum efficiency in city pickup and delivery, short haul highway and city shuttle service, these V-8 diesels have high-torque-rise characteristics in a broad operating range to permit less downshifting in heavy traffic or on steep grades. The Cat's Vee design has proven itself in demanding mid-range service with hundreds of thousands already in use.

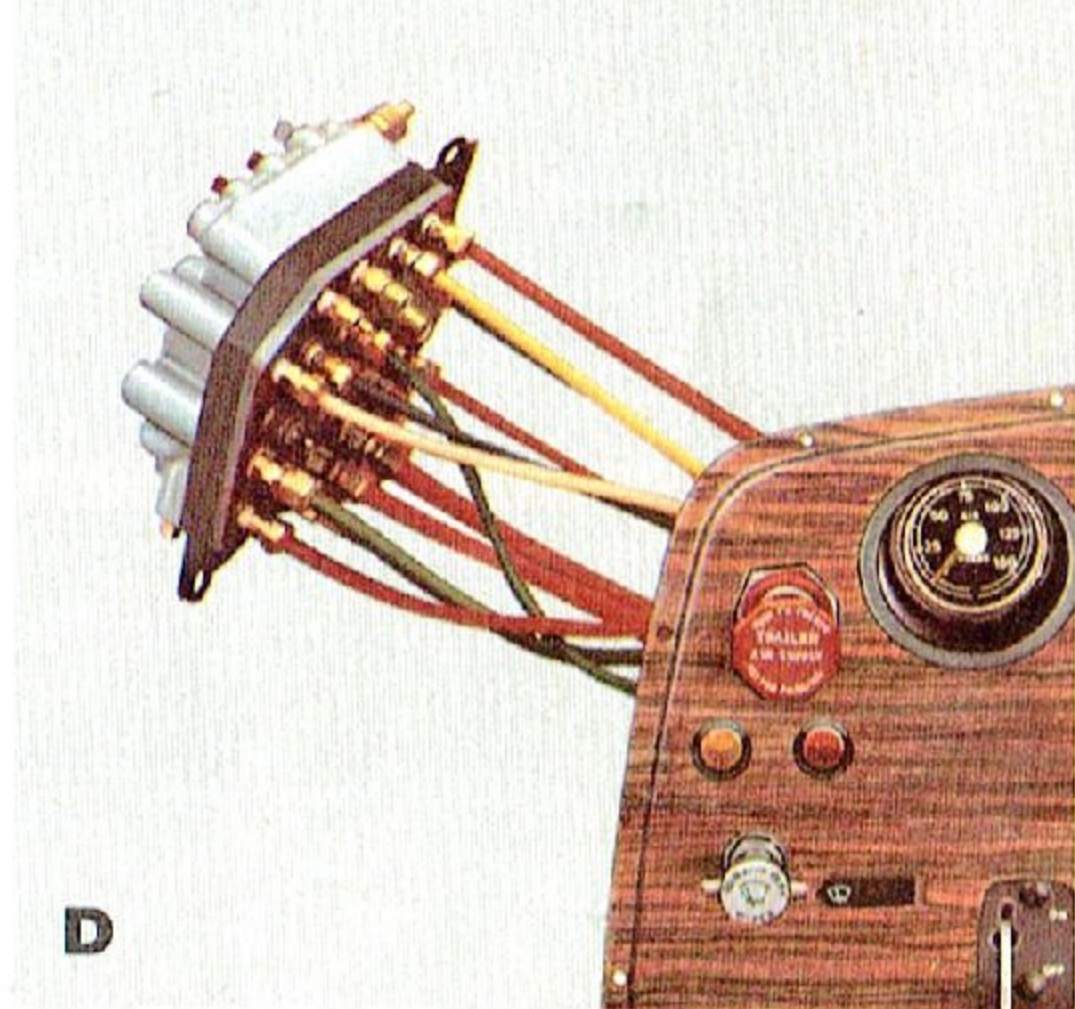
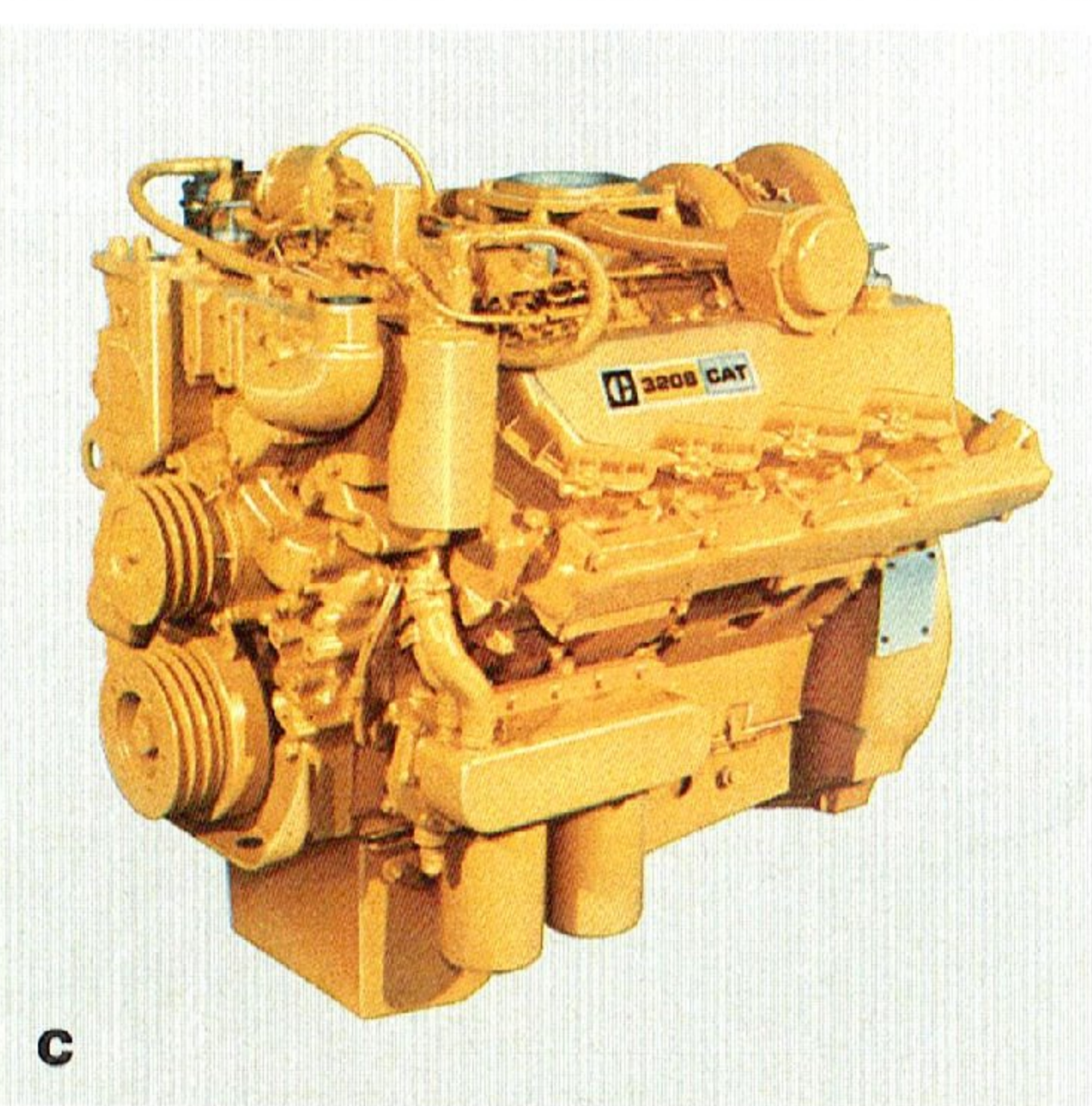
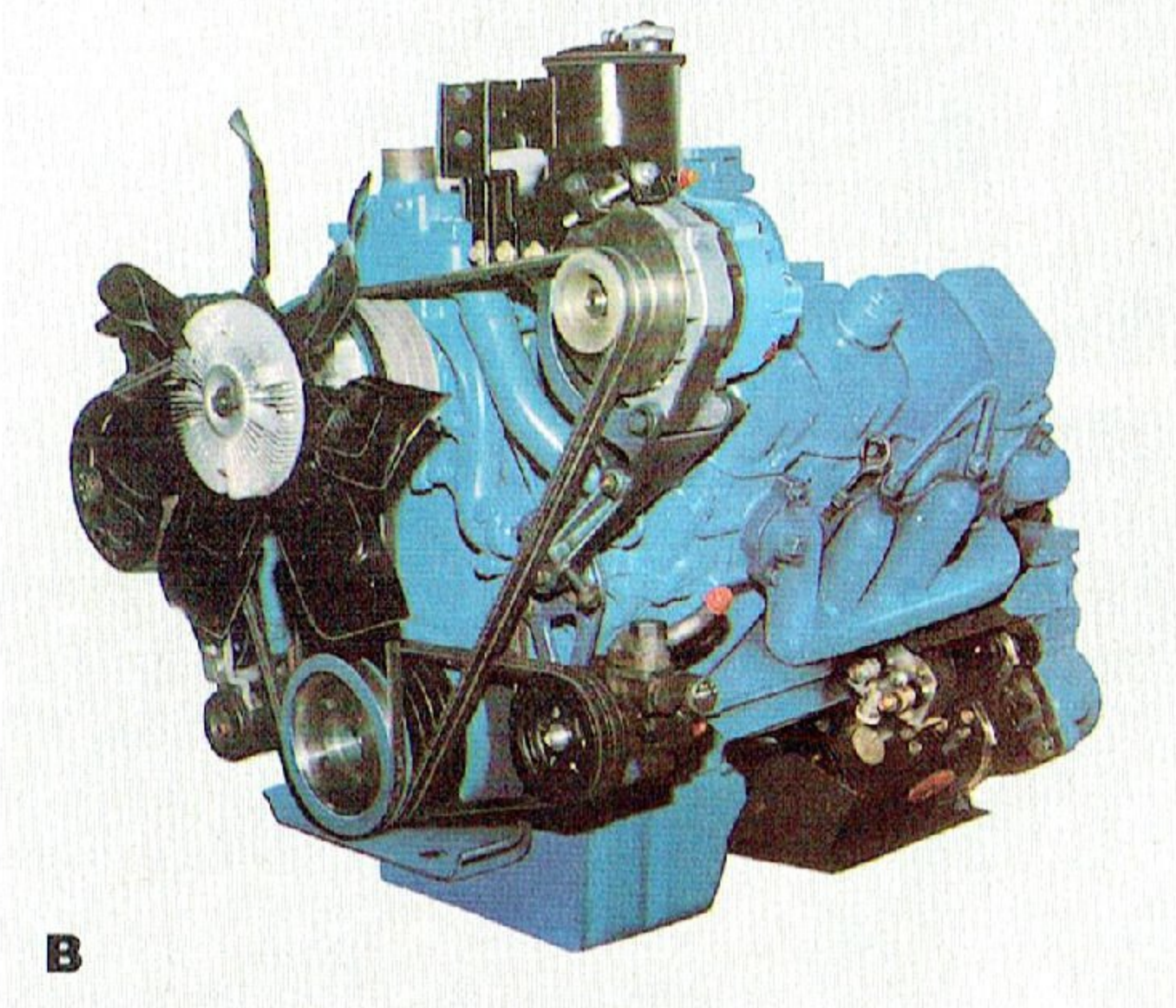
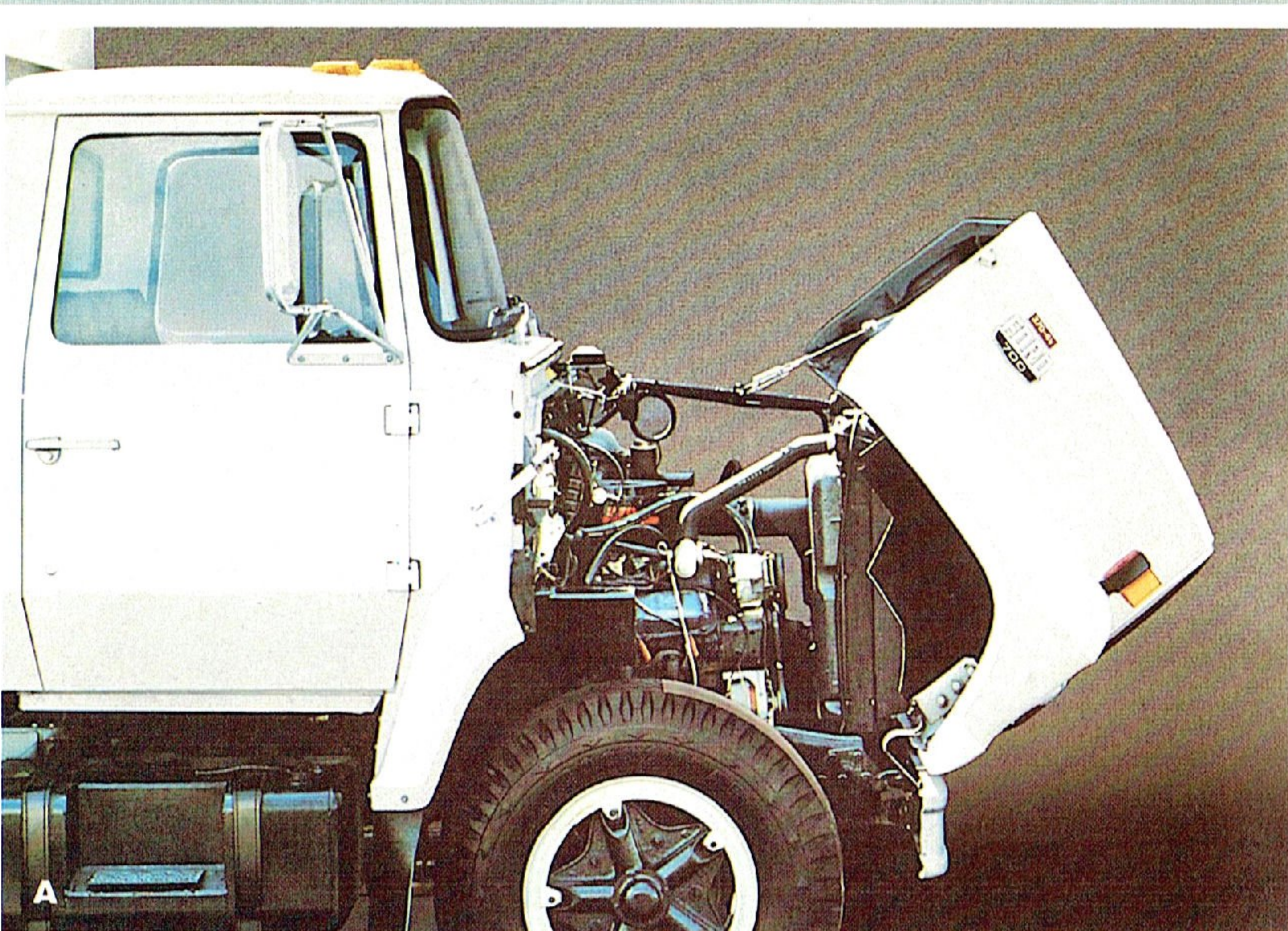
Inter-city ratings. Reduced rpm Caterpillar 3208 Series diesels* are available for inter-city applications and even greater fuel efficiency than regular rpm versions.

D. Removable Air-Pac.
Air-Pac, on models with air brakes, allows air controls and manifold to be taken out as a unit for repair.

E. Deep-dip Electrocoat.
This primer helps protect the cab against rust and corrosion. Cabs are fully immersed, and a high voltage charge bonds the primer to the metal.

F. Complete LP-Gas system.*
Ford offers complete LP-Gas system installations with Lima V-8 engines. This factory-installed system can include everything from the engine through to the LP-Gas pressure tank shown. Ask your dealer about the economic advantages of LP-Gas.

*PEO



LN-Series
options

- Unison driver and passenger seats
- Hand throttle, locking T-handle (std. with diesels)
- Heavy-duty black vinyl seat trim (std. 7000)
- Custom seat trim
- Heater—high output (included with diesels)
- Pushbutton AM radio with traveler's advisory position
- Map pocket (LH door)
- Roof vent
- All tinted glass (tinted windshield standard)
- Exterior sun visor
- Dual horns (electric, or air on air-equipped models)
- Stainless steel western and auxiliary convex mirrors
- Western lighted mirrors
- Western Re-Trac dual mirrors
- Brush-type grille guard
- Bright grille
- Fender sight rods
- Pedestal-mounted cab lights
- Air cleaner—HD dry type with restriction indicator
- Air-powered variable-speed windshield wipers (on air-equipped models)
- Alternators—60, 75, 90* or 105* amp.
- Automatic moisture ejectors (air brakes)
- Coolant recovery system (gas engines)
- Engine block heater
- Electric fuel pump (gas models: included with 7.0L [429] V-8 and/or Tractor Package)
- Ether cold starting aid (less canister) for diesels
- Front tow hooks
- Shock absorbers (front and rear)
- Silicone hose package (7000 Series)
- Stemco wheel seals
- Tachometer (electric)
- Tractor Package (except 600) with air and electric trailer connections

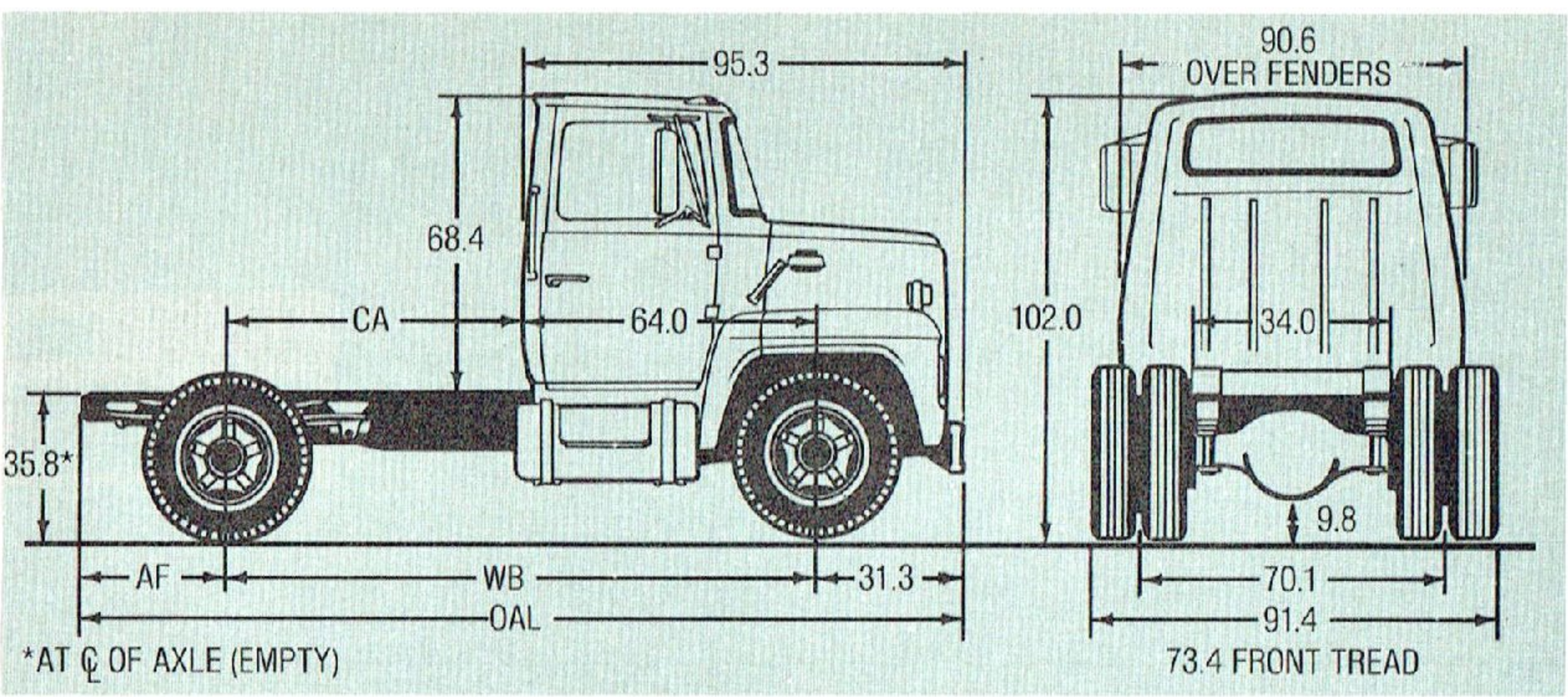
*PEO

Ask your Ford or Mercury Dealer about additional optional equipment.

Thrifty new Stripped Chassis
for custom bodies*

Ford now offers LN-Series Stripped Chassis with Lima V-8 gas or 8.2L diesel engines available in both 600 and 700 Series. And since many applications do not require the 165-hp, 8.2L, a new, more economical 130-hp. version is available for GVWR's up to 20,000 lb.

*PEO



Dimensions

WB in.	CA in.	AF in.	OAL in.
124	60	39	194.3
136	72	39	206.3
148	84	39	218.3
166	102	60	257.8
184	120	73	288.3
202	138	93	326.3
220*	156	93	344.3
250†	186	119	400.3

Dimensions are for base models w/standard equipment.
*Special order 600 Series.
†Special order 7000 Series.

Transmissions

TYPE	SERIES	LN-600	LN-700	LN-7000
4-Spd. Direct	New Process 435	S	S	—
	Warner T-19D	0	—	—
5-Spd. Direct	Clark 282 V	0	0	—
	Clark 285V	0	0	—
	Clark 282 VHD	0	0	—
	Clark 285 VHD	0	0	—
	Clark 390 V	—	0	0
	Clark 397 V	—	0	0
	Spicer 5052A	0	0	S
	Spicer 5252A	0	0	0
	Spicer 6052A	—	—	0
	Spicer 6052C	—	—	0
10-Spd. Direct	Fuller RT 6610	—	—	0
4-Spd. Auto.	Allison AT-545	0	0	0*
	Allison MT-643	—	0	0*

NOTE: Some transmissions are not available with various engine choices.
See your Ford or Mercury Dealer for complete power train information.
S—Standard 0—Optional *PEO.

Specifications

SERIES		LN-600	LN-700	LN-7000 (diesel)
GVW RATING lb. (kg)	Max.	24,000 (10,886 kg)	27,500 (12,474 kg)	27,500 (12,474 kg)
GCW RATING lb. (kg)	Max.	50,000 (22,680 kg)	60,000 (27,216 kg)	50,000 (22,680 kg)
AXLE, FRONT— RATING (lb.)	Std.	5,500	7,000	7,000
	Opt.	7,000	9,000	9,000
AXLE, REAR— RATING (lb.)	Std.	15,000	17,500	17,500
	Opt.	17,500	18,500	18,500
BRAKES, SERVICE SPLIT SYSTEM	Std.	Vac.-Hyd.	Vac.-Hyd.	Vac.-Hyd.
	Opt.	HD Vac.-Hyd., Air	HD Vac.-Hyd., Air	HD Vac.-Hyd., Air
ENGINES 4V gasoline engines available in LP-Gas version	Std.	6.1L (370) 2V V-8	6.1L (370) 4V V-8	Cat. 3208 175 hp
	Opt.	6.1L (370) 4V V-8 8.2L-N (500) V-8 Diesel 165 hp.	6.1L (370) 2V V-8 7.0 (429) 4V V-8 8.2L-N (500) V-8 Diesel 165 hp. 8.2L-T (500) V-8 Diesel 205 hp.	Cat. 3208 165 hp. Cat. 3208 185 hp. Cat. 3208 200 hp.
CLUTCH (Dia. in.)	Std.	13—1 Plate (1)	13—1 Plate* (1)	14—1 Plate**
TRANSMISSIONS	See transmission chart			
SPRINGS, FRONT— Capacity @ ground (lb.)	Std.	3,425	3,700	3,700
	Opt.	4,500	4,500	4,500
SPRINGS, REAR— Capacity @ ground (lb.) auxiliaries	Std.	7,500	8,750	8,750
	Opt.	8,750, 10,590, 11,670 2,250	10,590, 11,670 2,250	10,590, 11,670 2,250
POWER STEERING▲		Standard	Standard	Standard
WHEELS	Std.	Cast Spoke	Cast Spoke	Cast Spoke
	Opt.	6- or 10-Hole Disc	6- or 10-Hole Disc	6- or 10-Hole Disc
TIRES (Tube-type) nylon Maximum†	Std.	8.25 x 20 10 PR	8.25 x 20 10PR	8.25 x 20 10 PR
	Opt.	9.00 x 20 12PR	10.00 x 20 12 PR	10.00 x 20 12 PR

NOTE: Use adequate tires for loads and type of service.
**14-in. 2-plate optional.
*13-in. 2-plate with Clark 390V, 397V and all Spicer transmissions
†Wide choice of tires includes radial and steel cord types.
(1) 14" single plate dampened ceramic with 8.2L diesel
▲Manual steering is available.

Buy or lease a tough Ford Truck— a great choice either way!

Ford Trucks are engineered to some of the highest standards in the industry. And Ford's commitment to quality extends through the nationwide network of truck dealers. They're backed by a modern computer system linked to 6 Parts Distribution Centers. Centers that handle a full line of quality Motorcraft and Ford parts.

Of course, job performance is the final truck test. Talk to people who own today's Fords. Then talk to your Ford or Mercury Dealer.

Ford means business in big trucks.

Specifications, descriptions and illustrative material contained herein were as accurate as known at the time this publication was approved for printing. Ford of Canada reserves the right to discontinue models or options at any time or change specifications, equipment or design without notice and without incurring obligation. All options and accessories illustrated or referred to as optional or available are at extra cost. Some options are required in combination with other options. For the price of the model with the equipment you desire or verification of specifications contained herein, see your Ford or Mercury dealer.

These vehicles are regulated pursuant to the Canada Motor Vehicle Safety Act. If you acquire a vehicle for use in the U.S.A. you may be subject to regulations such as those issued by the U.S. Federal Highway Administration or issued pursuant to the Occupational Safety and Health Act (OSHA), and/or state and local laws and regulations, may require additional equipment for the particular use you intend for the vehicle. It is the buyer's responsibility to determine the applicability of such laws and regulations to the buyer's intended use for the vehicle and to arrange for the installation of required equipment.



...FOR SURE

Replacement Parts

Be sure to specify genuine Ford-approved Motorcraft parts from your Ford or Mercury Dealer.

NOTE: Pre-Engineered Options (PEO) are Special Order Options with high sales rates that have been pre-engineered for fast delivery.

Your Ford or Mercury Dealer has information about the availability of many items of equipment which can be ordered for the vehicle. Many of the items shown on vehicles in this publication are available through retail organizations and establishments not connected with Ford of Canada. Bodies or trailers shown with Ford Chassis-Cabs or Tractors are merely representative of the many types available from various manufacturers and do not constitute a recommendation by Ford of Canada as to their suitability for your individual needs. Availability, price, quality and durability of these items rests solely with the respective manufacturers and their sales organization, and Ford assumes no responsibility for their use.

FORD LN-SERIES

HEAVY DUTY TRUCKS



Litho in Canada 10/82

