

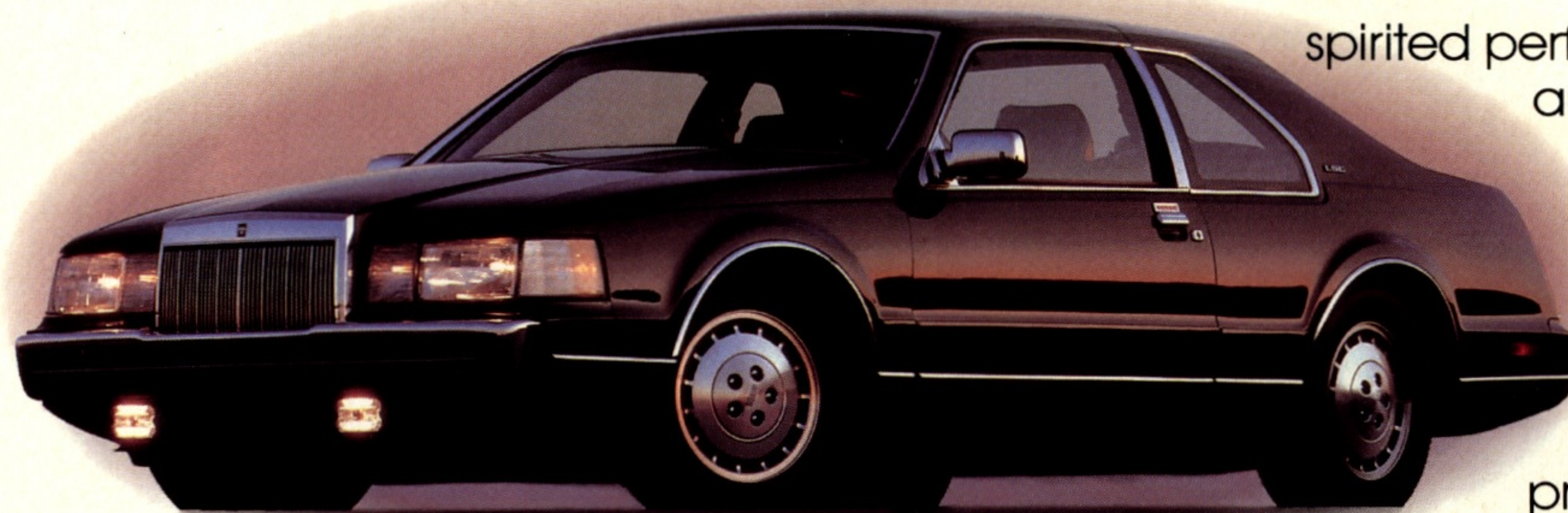
LINCOLN MARK VII  
LINCOLN CONTINENTAL  
LINCOLN TOWN CAR

1987





As a luxury car buyer,  
you look for more than quality.  
You look for evidence.



spirited performance and exceptional elegance are the ultimate luxuries.

The 1987 Lincoln Continental is a luxurious co-mingling of truly sophisticated technology and exceptional "master designer" taste.

And the Lincoln Town Car continues its legendary tradition of uncompromising ride, room and comfort.

From your very first ride, you'll realize that the Lincoln you've chosen sets new standards in quality that other luxury cars can only envy. Lincoln has it all. And even more...

#### **A dedication of quality.**

All Lincoln cars are built at one plant - The Wixom Assembly Plant near Detroit. Producing Lincolns is the sole job. Here quality is job one. And the job continues to get done.



**A focus on safety.** In addition to the obvious safety features, such as an Anti-Lock Brake System and Electronic Air Suspension on Mark VII and Continental, Lincoln builds structural strength into every Lincoln. A Lincoln's unitized body, for example, is welded from end-to-end, forming a high strength passenger capsule. The construction absorbs energy during a collision and helps dissipate some of the force of the impact.

Lincoln doors feature strong, double panel welded construction. Inside each is a high strength steel beam that can withstand a massive side load.



**The Lincoln Commitment.** The Lincoln commitment to quality ensures that every Lincoln vehicle achieves the all important objective of providing complete customer satisfaction. That is why every Lincoln is protected by the Lincoln Card. This card is your assurance of receiving the kind of personal preferential service you and your Lincoln so richly deserve.

**The 1987 Lincolns. What a Luxury car should be.**

\*Based on an average of owner-reported problems in the first three months of service of '86 models and in a six-month period on '81-'85 models designed and built in North America.



**Lincoln Mark VII**  
**The performance**  
**of a sports coupe,**  
**the luxury of a Lincoln.**

Lincoln Mark VII LSC. It behaves like no other luxury car. It goes quickly. Very quickly. Its zero to one hundred km/ph acceleration will make the most serious driver smile.

Mark VII also stops very quickly.

Its Anti-Lock Brake System stops you up to 40% faster on slick or icy surfaces.

Yet, while Mark VII LSC exhibits such sharp responsiveness, it isn't at the expense of comfort. Its appoint-

ments, its personal touches, its enormous number of standard features live up to the name Lincoln.

*1987 Lincoln Mark VII LSC in Cabernet Metallic.*







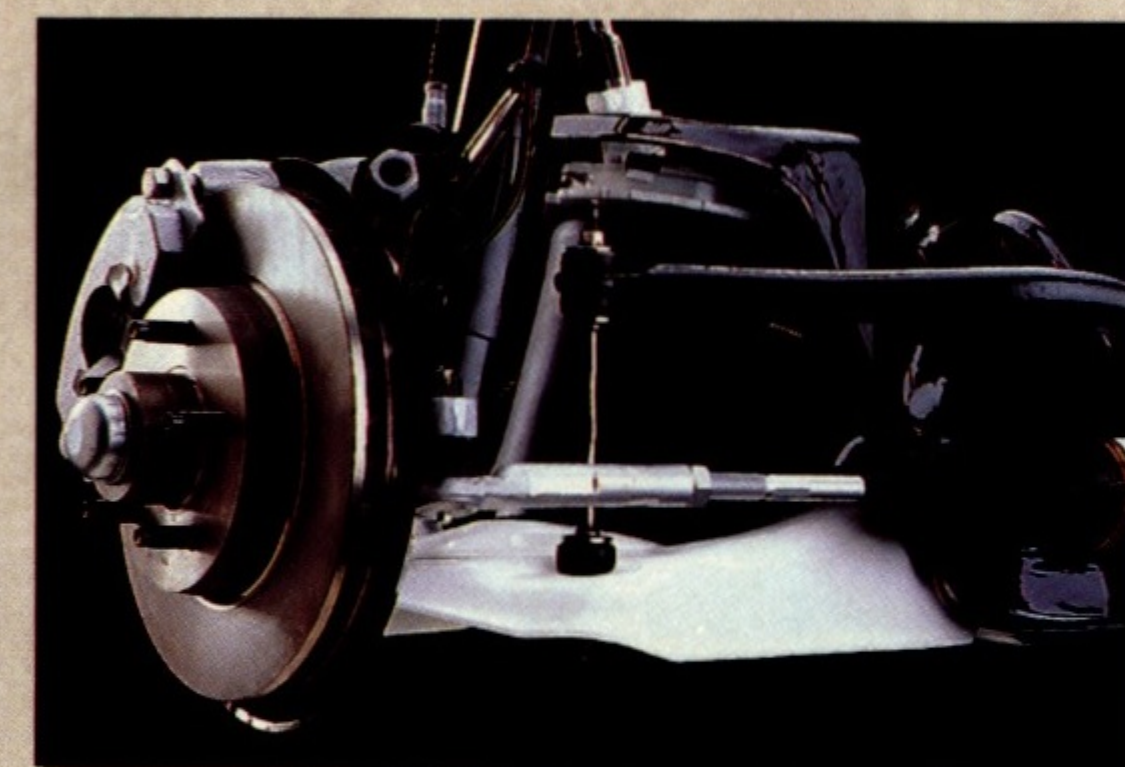
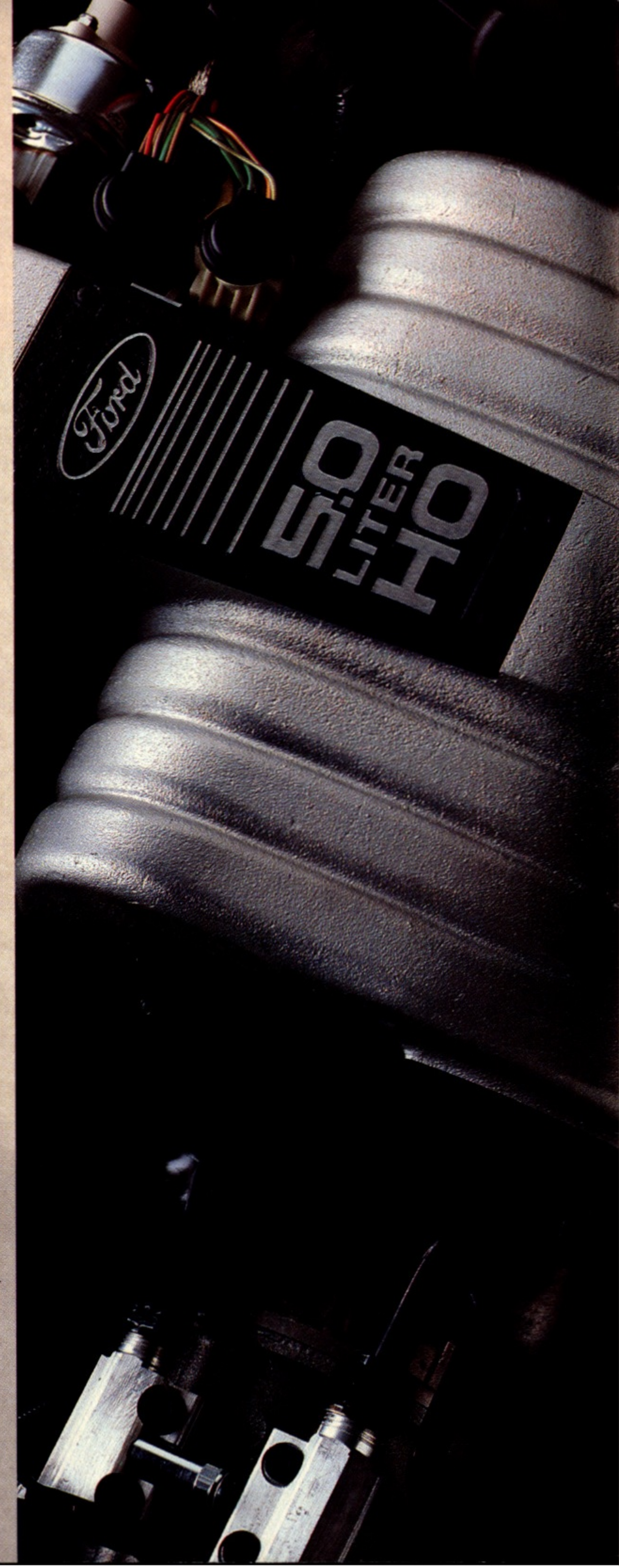
## The accomplishments of an accomplished performer.

State-of-the-art technology is more than a flashing light show on the instrument panel. Some of Mark VII LSC's advancements you can't even see unless you're specifically looking for them.

**Let's start with stopping.** Standard on LSC (and all Mark VII's) is the most advanced brake system in the world: the Anti-Lock Brake System (ABS). ABS, combined with Mark VII's standard power-assisted four-wheel disc brakes, provides straight-line braking even on rain- or ice-slick pavement. It can cut 40% off stopping distances



*The first defense against brake locking is a speed sensor in each wheel that sends information to a microprocessor.*



*Electronic Air Suspension features a rubber air spring that changes the spring rate as conditions change.*

compared to conventional braking systems.

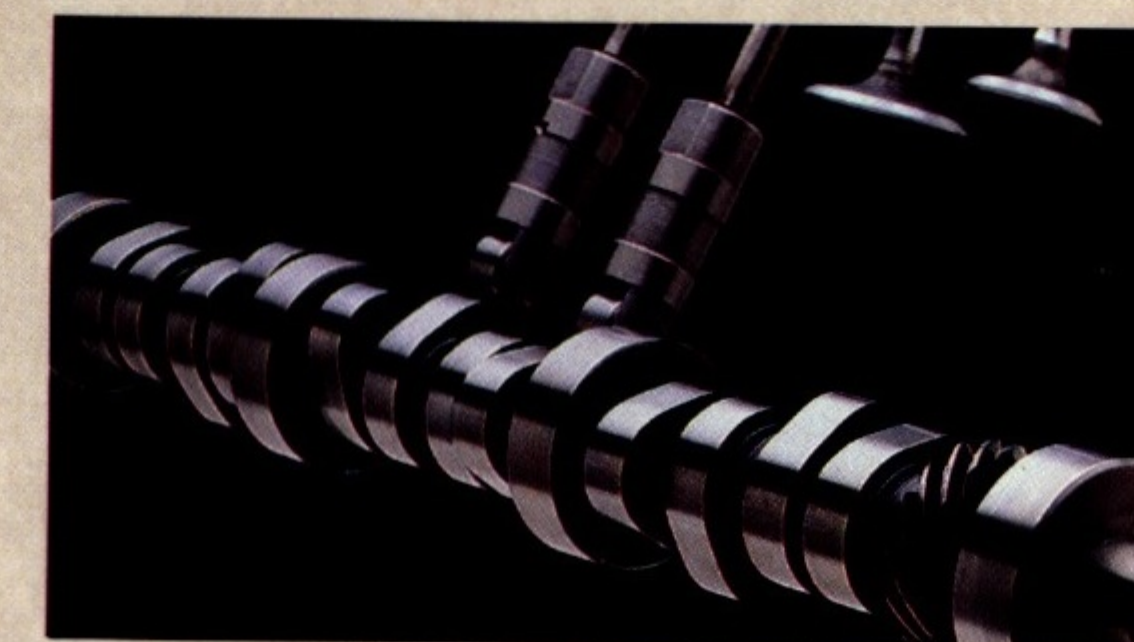
At each wheel is a sensor which relays information to a microprocessor. The microprocessor, in turn, distributes braking power between Mark VII's front and rear brakes, and left and right brakes. Even in panic stops, the wheels will not lock up so you can stop swiftly and surely.

**Eight cylinders of engineering excellence.** A 5.0-litre High Output V-8 engine is standard on Mark VII LSC. Its list of features reads like a racing engine's: tubular headers, dual exhaust, performance camshaft, low friction roller tappets, tuned, cast-

aluminum intake manifold and remote-mounted air cleaner.

Its sequential multi-port electronic fuel injection system injects a metered amount of fuel into the intake ports of each cylinder. It does it at precisely the moment needed in a sequence identical to the cylinder valve openings.

Standard on all Mark VII models



*One example of applied racing technology is low friction roller tappets.*

is an on-board computer (EEC-IV) that controls vital engine operations. It continually senses or controls engine speed, ambient air temperature, cooling temperatures, manifold, absolute pressure, fuel/air ratio, spark timing and throttle positions.

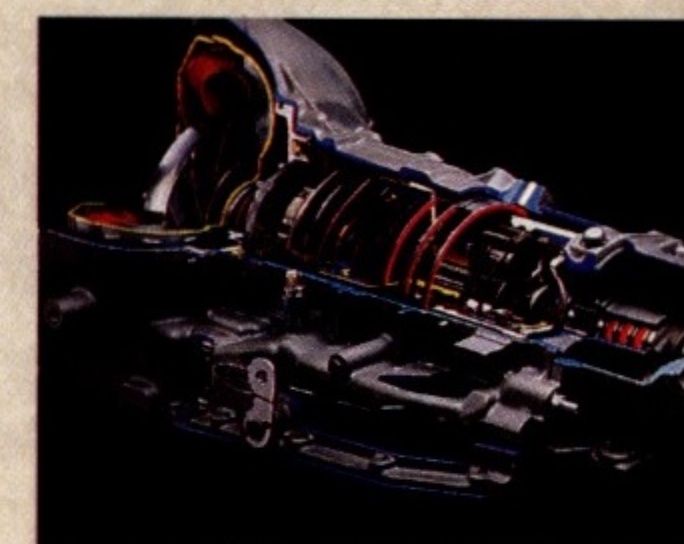
**Electronic Air Suspension is more support.** A luxury performance car should deliver a superb ride. And

Mark VII does. It's supported at each corner by a rugged rubber air spring with a piston design that varies the spring rate. This improves stability on rough roads or severe handling maneuvers.

The system also provides automatic computer-controlled load leveling – both front-to-rear and side-to-side – to maintain proper ride height.

To the LSC, larger front and rear stabilizer bars are added and the Electronic Air Suspension's clamping forces are boosted an average of 37% to provide precise handling and improved performance.

**A transmission that goes one better.** A four-speed automatic overdrive transmission is standard on Mark VII. Its fourth-gear overdrive lets the engine run slower while maintaining cruising speed, so it's more efficient and actually improves fuel economy.



*The fourth gear on Mark VII's automatic overdrive transmission is 100% mechanical drive, so there's virtually no slippage.*



1987 Lincoln Mark VII LSC  
with Cabernet leather  
interior. Some features  
shown may be optional.

**The only North American  
performance car whose luxury  
comes as no surprise.**

Luxury here has a single purpose:  
increasing your driving pleasure. The  
articulated driver's sport seat, with  
eleven different adjustments, lets you  
virtually create your own driving  
position.

In addition to forward/back,  
up/down and seatback movements,  
you can further fine-tune your comfort  
with a number of more subtle adjust-  
ments. There are power cushion  
bolsters and manual forward/reverse  
supports for thighs, power lumbar  
supports for lower back and manual  
four-way headrests.

The A-frame steering wheel is  
leather-wrapped. And all the controls  
are placed so you can reach them  
without having to reach.

In addition to  
its mechanical  
analog instrument-  
ation, the LSC  
provides information through its trip  
computer. A 12-button keyboard lets  
you summon up all sorts of useful  
travel data.

When you turn the page, you'll see  
how it feels to be behind the wheel  
of a Mark VII LSC.



Overhead console  
(above) features map  
lights, warning lamps,  
an electronic compass  
and an outside tempera-  
ture display.



The power seat control  
(left) even resembles a  
seat to make adjustments  
extremely uncomplicated.





Warning lights and indicators:

- AMP (Amplifier)
- ENGINE (Engine oil pressure)
- DOOR AJAR (Door ajar)
- BRAKE (Brake)
- FASTEN 2 BELTS (Fasten seatbelts)
- TRUNK AJAR (Trunk ajar)

Headlight and turn signal controls.

Steering wheel controls:

- RESUME (Resume)
- SET (Set)
- CRUISE (Cruise)
- OFF (Off)
- ON (On)

7:00  
WED 19

- 1 CLOCK
- 2 ALARM
- 3 E/TIME
- 4 ETA
- 5 DEST
- 6 DIST
- 7 AV SPD
- 8 F/ECON
- 9 DTE
- 0 SET
- MILES km
- RESET

Audio controls:

- POWER
- 105.9 MHz
- SEEK AM FM MEMORY
- VOL (Volume)
- BASS
- TREB
- SPKRS (Speakers)
- AUTO REVERSE
- EJECT
- REV (Reverse)
- PREMIUM SOUND

Climate controls:

- COOL
- ELECTRONIC CLIMATE CONTROL
- WARM
- OFF/AUTO
- LO HI
- A/C - PANEL - FLOOR

Passenger side air vents.



Bill Blass gives Mark VII  
a feel for fashion that  
acknowledges  
its feel for the road.

What designer better understands  
the disciplines of subtlety and  
understatement than Bill Blass?  
Rather than embellishing the  
simplicity of its functional form, he has  
underscored it.

His colour scheme is Prairie Mist  
Metallic for the exterior with  
colour-coordinated accent stripes.

*Blass' leather seating  
is done in Sandalwood  
with Dark Prairie Mist  
accents.*





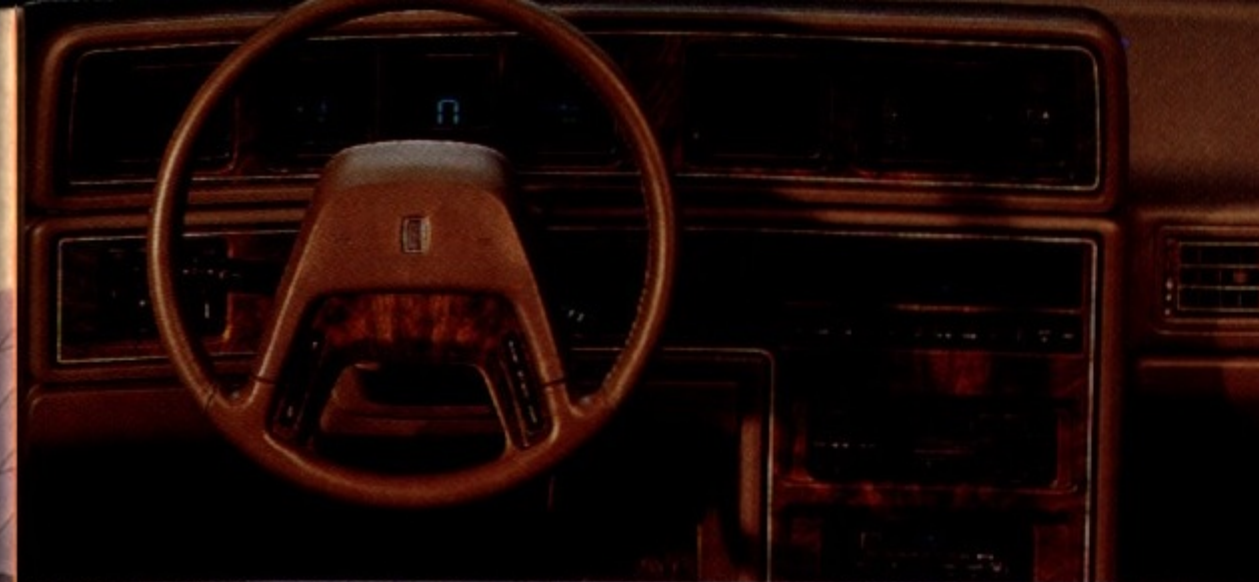
**Continuing a tradition of breaking with tradition.**

Throughout the history of the Mark, one thing has remained constant. Each has been a dramatic departure

from conventionality. The 1956 Mark II was entirely new, sharing neither frame nor components with any other Ford or Lincoln car. But Mark's striking originality goes beyond styling and engineering. For 1987, Mark VII has distinguished itself still another way. It

is North America's most completely equipped car.

An item-by-item list of standard features is on the next page but among the highlights are a fuel-injected V-8 engine, Anti-Lock Brake System and Electronic Air Suspension.



The standard instrument panel includes digital speedometer and fuel gauge, Automatic Climate Control, AM/FM stereo cassette radio with Premium Sound, speed control and leather-wrapped tilt steering wheel.

1987 Lincoln Mark VII in Rose Quartz Metallic with a 1956 Continental Mark II.





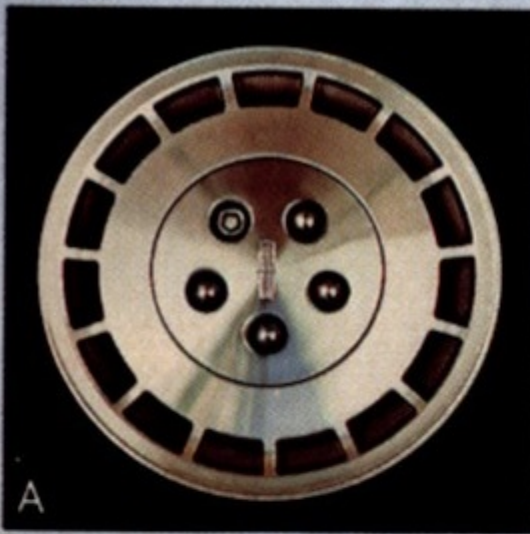
Lincoln Mark VII...with such a lengthy list of standard features, there's very little to add.

	Mark VII	Bill Blass	Mark VII LSC
FUNCTIONAL FEATURES			
5.0-litre V8 engine	\$	\$	
5.0-litre high-performance V8 engine			\$
Sequential multi-port electronic fuel injection	\$	\$	\$
Electronic Engine Controls (EEC-IV)	\$	\$	\$
Tubular exhaust headers			\$
Performance camshaft			\$
Dual exhaust			\$
Four-speed automatic overdrive transmission	\$	\$	\$
3.08:1 axle ratio	\$	\$	
3.27:1 axle ratio			\$
Power steering	\$	\$	\$
Engine block heater	O	O	O
Four-wheel disc Anti-Lock Brake System	\$	\$	\$
Electronic air suspension and level control	\$	\$	\$
Handling suspension			\$
Nitrogen gas-pressurized rear shocks and front struts	\$	\$	\$
Front and rear stabilizer bars	\$	\$	\$
84-amp-hr maintenance-free battery	\$	\$	\$
83.7 litre (18.4 Imp. Gal.) fuel tank	\$	\$	\$
EXTERIOR FEATURES			
Aircraft-styled doors	\$	\$	\$
Aerodynamic halogen headlamps	\$	\$	\$
Cornering lamps	\$	\$	\$
Fog lamps			\$
Underhood lamp	\$	\$	\$
Headlamp convenience system	\$	\$	\$
Illuminated/keyless entry system	\$	\$	\$
Single key entry/ignition	\$	\$	\$
Power decklid pulldown	\$	\$	\$
Power fold-away heated mirrors	\$	\$	\$

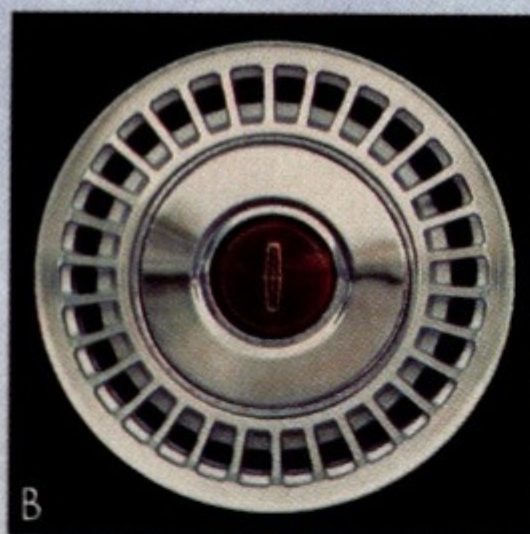
	Mark VII	Bill Blass	Mark VII LSC
Upper body dual band paint accent stripes	\$	\$	
Bright lower bodyside moulding	\$	\$	
Fluted Dark Charcoal lower bodyside moulding			\$
Colour-keyed bodyside protection moulding	\$	\$	\$
Unique paint theme		\$	
INTERIOR/CONVENIENCE FEATURES			
Electronic instrumentation	\$	\$	
Analog instrumentation with tachometer			\$
Message Centre with digital readouts	\$	\$	\$
Six-way power driver and passenger seats	\$	\$	\$
Dual power recliners	\$	\$	\$
Articulated sport seats			\$
Manual thigh and power bolster/lumbar supports			\$
Four-way articulated front seat headrests	\$	\$	\$
Rear seat integral headrests	\$	\$	\$
Single rear seat fold-down armrest	\$	\$	\$
Air Conditioner, Automatic Climate Control	\$	\$	\$
Rear window defroster	\$	\$	\$
Side window defoggers	\$	\$	\$
Rear compartment heat duct	\$	\$	\$
Tinted glass	\$	\$	\$
Electronic AM/FM stereo search radio with cassette	\$	\$	\$
Four-speaker Premium Sound System	\$	\$	\$
Power antenna	\$	\$	\$
Tilt steering column	\$	\$	\$
Fingertip speed control	\$	\$	\$
Automatic parking brake release	\$	\$	\$
Stalk controls with flash-to-pass	\$	\$	\$
Interval wipers with speed indicator	\$	\$	\$
Power windows and door locks	\$	\$	\$
Power moonroof	O	O	O
Illuminated glove box	\$	\$	\$

	Mark VII	Bill Blass	Mark VII LSC
Leather-wrapped steering wheel	\$	\$	
Unique perforated leather-wrapped steering wheel			\$
Leather-wrapped gearshift		\$	\$
Console-mounted gearshift, cup holder, coin slots	\$	\$	\$
Compass/Thermometer Group	\$	\$	\$
Automatic-dim day/night mirror	O	O	O
Anti-Theft Alarm System	O	O	O
Dual illuminated visor vanity mirrors	\$	\$	\$
Dual-intensity rear reading lamps	\$	\$	\$
38-ounce floor carpeting	\$	\$	\$
Front and rear carpeted floor mats	\$	\$	\$
Remote decklid and fuel filler door releases	\$	\$	\$
Luggage compartment lamp	\$	\$	\$
Carpeted luggage compartment	\$	\$	\$
Leather seat trim	O	\$	\$
Ultrasuede® seat material/no extra charge		O	
Leather bolsters with leather or cloth inserts			\$
TIRES/WHEELS			
P215/70R15 WSW steel-belted radial tires	\$	\$	
P215/65R15 BSW performance steel-belted radials			\$
Puncture-sealant tires	O	O	
Handling cast-aluminum wheels (A)			\$
Cast-aluminum road wheels (B)	\$		
Wire-spoke cast-aluminum wheels (C)	O	\$	

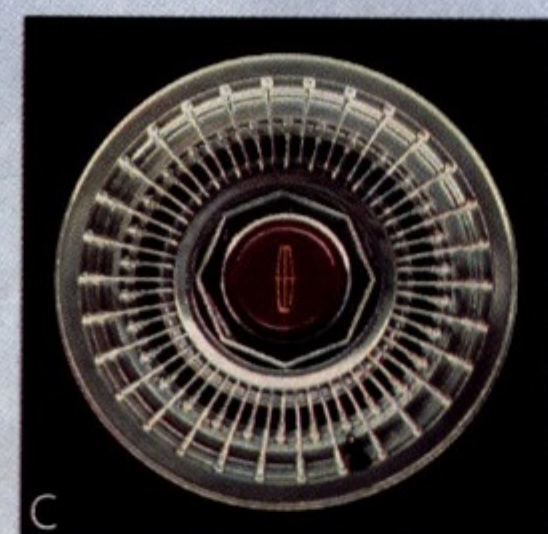
S- Standard feature    O- Optional feature



Handling cast-aluminum wheels



Forged-aluminum road wheels



Wire-spoke cast-aluminum wheels

EXTERIOR COLOURS

Standard on Mark VII and LSC

Graphite Clearcoat Metallic	Midnight Black
Crystal Clearcoat Metallic	Arctic White
Platinum Clearcoat Metallic	
Titanium Clearcoat Metallic	
Cabernet Clearcoat Metallic	
Silver Blue Clearcoat Metallic	
Dark Shadow Blue Clearcoat Metallic	
Dark Sandalwood Clearcoat Metallic	
Silver Sand Clearcoat Metallic	
Rose Quartz Clearcoat Metallic	
Dark Taupe Glamour Clearcoat Metallic	
Glacier Blue Glamour Clearcoat Metallic	
Standard and Exclusive on Bill Blass	
Prairie Mist Glamour Clearcoat Metallic	

INTERIOR COLOURS

Standard on Mark VII and LSC

Shadow Blue	Taupe	Raven Black
Cabernet	Oxford Gray	Sandalwood
Standard on Bill Blass		Sandalwood

DIMENSIONS

Wheelbase mm (in.)	2756	(108.5)
Overall length mm (in.)	5151	(202.8)
Overall height mm (in.)	1377	(54.2)
Overall width mm (in.)	1801	(70.9)
Tread mm (in.) (front/rear)	1483/1499	(58.4/59.0)
Headroom mm (in.) (front/rear)	960/942	(37.8/37.1)
Legroom mm (in.) (front/rear)	1067/937	(42.0/36.9)
Shoulder room mm (in.) (front/rear)	1422/1468	(56.0/57.8)
Hiproom mm (in.) (front/rear)	1331/1402	(52.4/55.2)
Luggage capacity litres (cu. ft.)	402	(14.2)
Fuel capacity litres (Imp. gal.)	83.7	(18.4)
Curb weight kilograms (lb.)	1688 (3722)	1700 (3747) 1711 (3772)
(Mark VII, Bill Blass, LSC)		



The optional power glass moonroof operates two ways. Open it all the way or use its convenient vent feature. A sliding sun shade panel is included.





**Lincoln Continental**  
**The first thing you'll**  
**notice is that**  
**everybody else does.**

The admiring glances simply acknowledge what you already know: that a luxury car should, first and foremost, look like one.

But the beauty of Continental is more than aesthetic.

It's technological, too. Its engine, for example, is a multi-port, sequential fuel-injected 5.0-litre V-8. A refreshing luxury in this age of underpowering.

Its brake system is the most

advanced in the world – the Anti-Lock Brake System. It stops you faster, more surely, under the heaviest braking, even on slick surfaces.

Its suspension system is the most sophisticated of any luxury car. It

actually rides on four columns of air for a smooth, controlled ride.

Generally and technically speaking, Lincoln Continental is truly a beautiful luxury car.

*1987 Lincoln Continental in Graphite Metallic.  
Some features shown may be optional.*





As you'd expect,  
its standard interior is exceptional.

Nearly every imaginable feature is included as standard equipment.

Its pleated cloth seats are as comfortable as they look. And they're infinitely adjustable. Both front seats have six-way power adjustments for personalized body support and comfort.

On the next pages you'll see Continental's thoughtfully arranged electronic instrument panel with digital readouts of vital data. Its programmable trip computer provides such helpful information as average speed, average fuel economy and estimated time of arrival. And like the Automatic Climate Control, keyless entry system and automatic speed control, it's all standard.



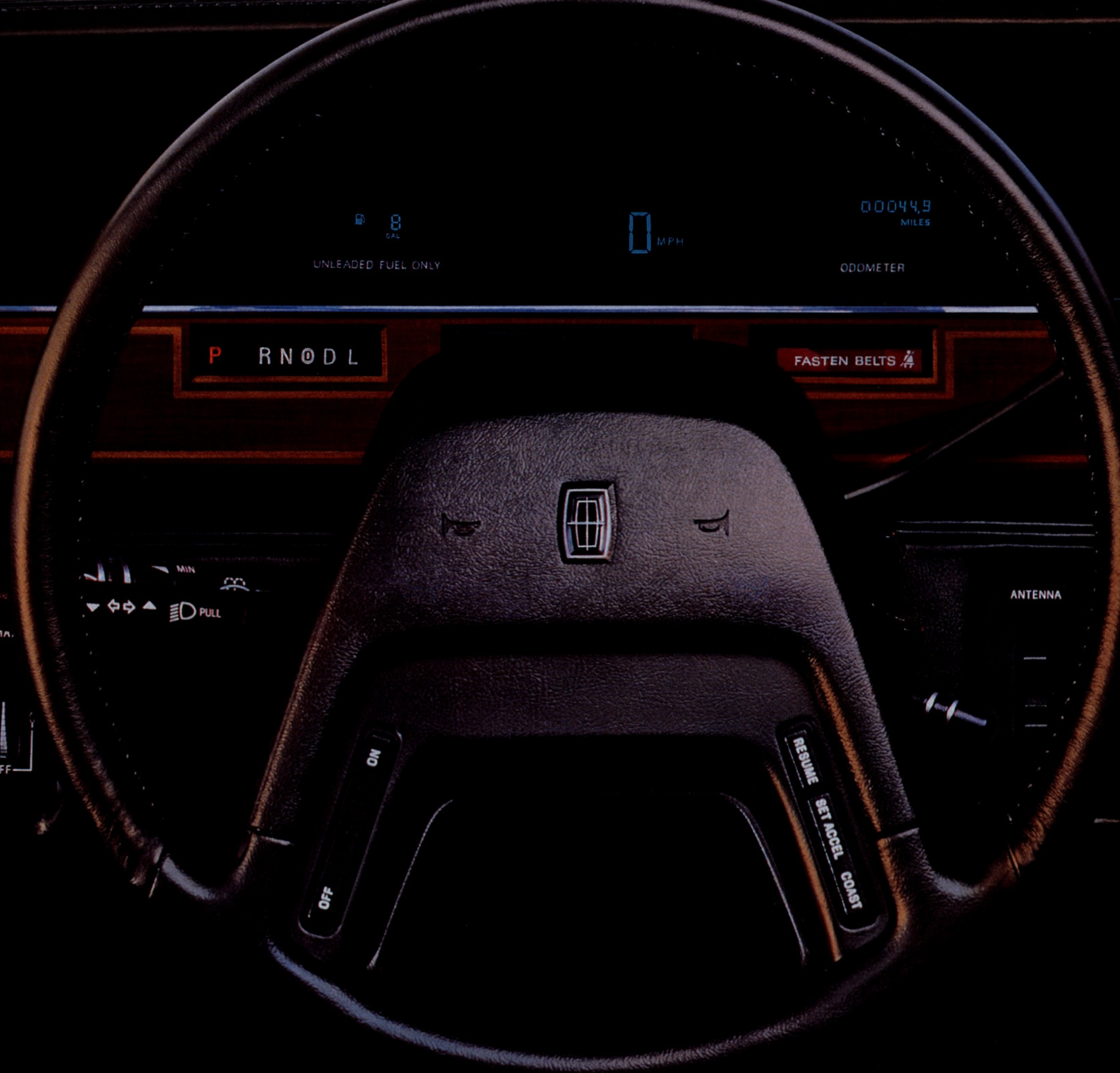
*One option worthy of your attention is the incredible Ford JBL high fidelity audio system (above) with 12 speakers and 140 watts of power.*

*1987 Lincoln Continental interior (right) in richly pleated Raven Black cloth. Some features shown may be optional.*





PANEL DIM LIGHTS  
OFF  
AUTO DIM  
MAX  
OFF  
OFF



UNLEADED FUEL ONLY

0 MPH

00044.9 MILES  
ODOMETER

P R N D L

FASTEN BELTS

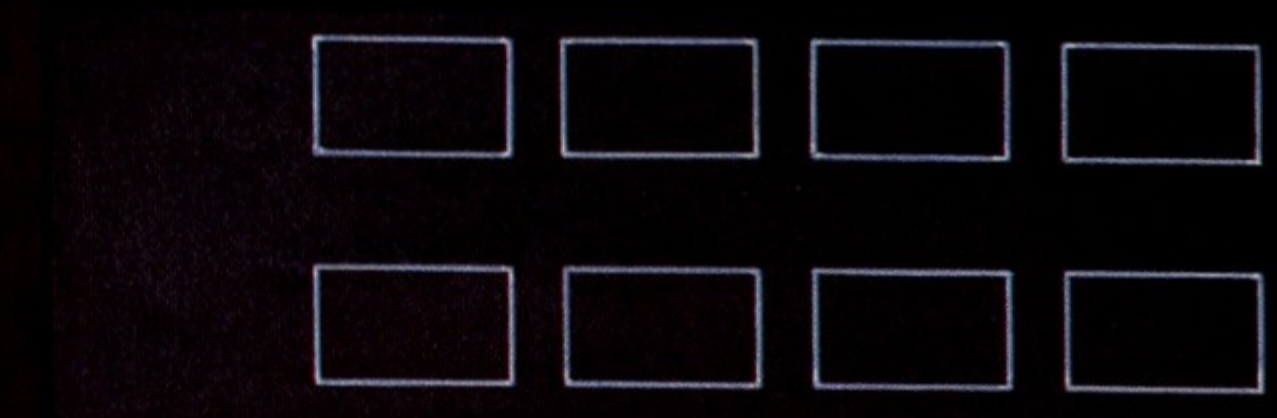
ANTENNA

OFF ON

RESUME  
6-11 ACCEL  
COAST

2:30  
FEB. 22

1 CLOCK 2 ALARM 3 E/TIME 4 ETA 5 DEST 6 DIST 7 AV SPD 8 F/ECON 9 DTE 0 SET MILES km RESET



POWER 101.9 FM  
SEEK AM FM MEMORY  
AUTO REVERSE  
EJECT DNR  
AMS  
audio system

72°  
COOL electronic climate control WARM  
OFF/AUTO LO HI A/C - PANEL - FLOOR



Only a master designer  
could further heighten  
its elegance.

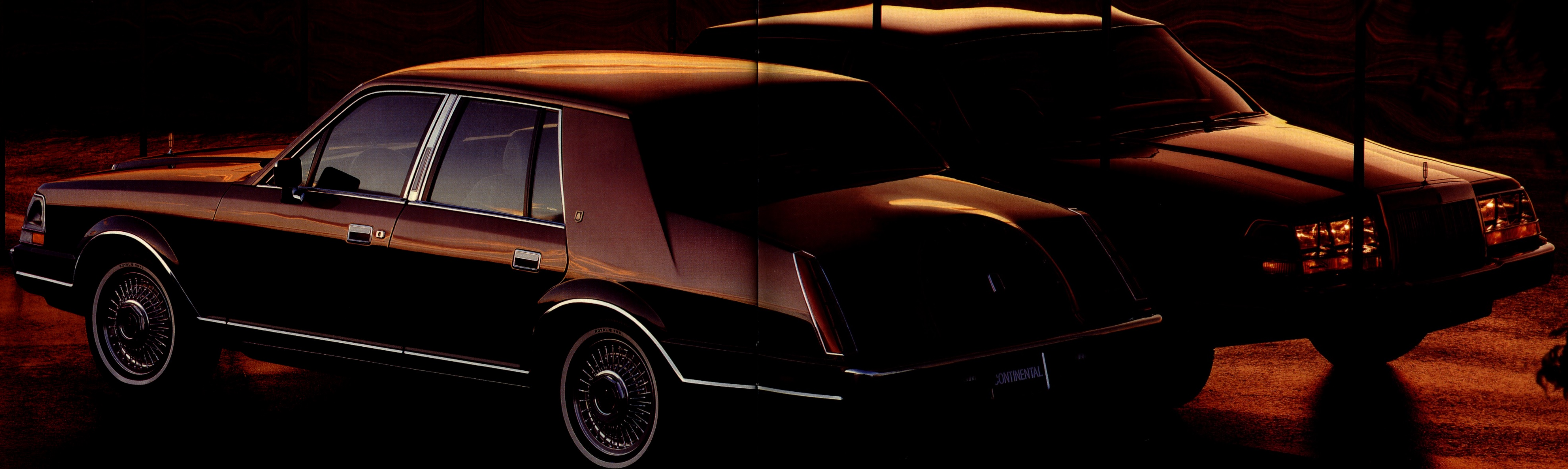
The 1987 Lincoln Continental,  
Givenchy Designer Series.

For over thirty years the House  
of Givenchy has represented endur-  
ing fashion. And for more than a  
decade the master's stroke has been

applied to Lincoln Continental.

Simplicity, purity, restraint...these  
are among the disciplines of France's  
Hubert de Givenchy. For 1987 he has  
chosen a two-tone motif of Rose  
Quartz Metallic over Dark Taupe

Metallic, separating the two with a  
tasteful accent stripe. He completes  
his Continental with wire-spoke alu-  
minum wheels.







1987 Lincoln Continental  
Givenchy Designer Series  
in Taupe leather. Taupe  
cloth seats are also  
available at no additional  
cost.

Pure Givenchy:  
fashion that is beautifully  
functional.

Givenchy's treatment inside his Continental echos the exterior. He uses seats that are upholstered in Taupe natural grain leather. The fabric is perforated to allow it to breathe for added comfort. He has wrapped the steering wheel in Taupe leather and continues the theme with matching Taupe interior trim and carpeting.



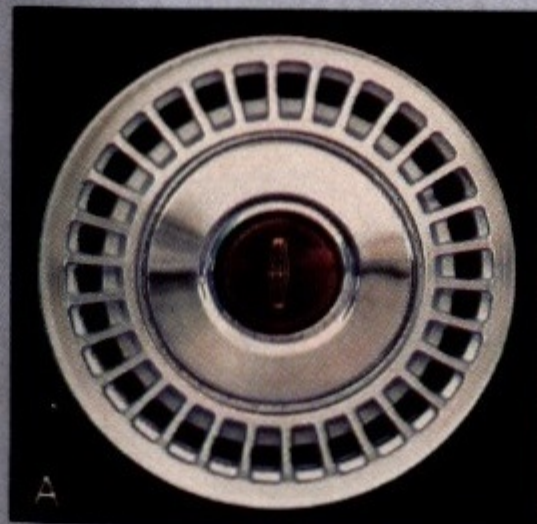
Lincoln Continental...with such a lengthy list of standard features, there's very little to add.

	Continental	Givenchy
<b>FUNCTIONAL FEATURES</b>		
5.0-litre V8 engine (150 hp @ 3200 rpm)	\$	\$
Sequential multi-port electronic fuel injection	\$	\$
Electronic Engine Controls (EEC-IV)	\$	\$
Four-speed automatic overdrive transmission	\$	\$
Four-wheel disc Anti-Lock Brake System	\$	\$
Electronic air suspension/automatic level control	\$	\$
Engine block heater	O	O
Power rack-and-pinion steering	\$	\$
Nitrogen gas-pressurized rear shocks and front struts	\$	\$
Front and rear stabilizer bars	\$	\$
71 amp-hr maintenance-free battery	\$	\$
3.08 axle ratio	\$	\$
Traction-Lok axle (3.08:1 ratio)	O	O
76.8 litre (16.9 Imp. Gal.) fuel tank	\$	\$
<b>EXTERIOR FEATURES</b>		
Quad halogen headlamps	\$	\$
Cornering lamps	\$	\$
Coach lamps	\$	\$
Underhood lamp	\$	\$
Trunk lamp	\$	\$
Keyless entry system	\$	\$
Single key entry/ignition	\$	\$
Headlamp convenience system	\$	\$
Heated power fold-away mirrors	\$	\$
Power decklid pull-down	\$	\$
Dual band paint accent stripes	\$	\$

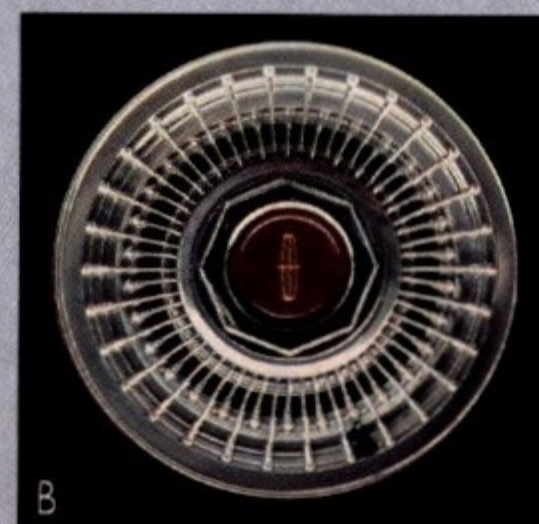
	Continental	Givenchy
Special Givenchy paint theme and trim		\$
Colour-keyed vinyl bodyside protection mouldings	O	O
Bright brushed upper bodyside mouldings	O	
Dual-Shade and Glamour paint	O	
<b>INTERIOR/CONVENIENCE FEATURES</b>		
Electronic instrumentation	\$	\$
Message Centre with digital readouts	\$	\$
Overhead information console with reading lamps	\$	\$
Compass/Thermometer Group	\$	\$
Six-way power adjusted twin comfort lounge front seats	\$	\$
Dual power recliners	\$	\$
Four-way articulated front-seat headrests	\$	\$
Rear-seat centre armrest and integral headrests	\$	\$
Leather seat surfaces	O	\$
30-ounce floor carpeting	\$	\$
Carpeted cowl and lower door panels	\$	\$
Carpeted luggage compartment	\$	\$
Rear compartment heat duct	\$	\$
Door trim panels with woodtone appliques	\$	\$
Power windows, vents and door locks	\$	\$
Power glass moonroof	O	O
Remote decklid release	\$	\$
Electronic AM/FM stereo search radio with cassette	\$	\$
Six-speaker Premium Sound System	\$	\$
Ford JBL high fidelity 12-speaker audio system	O	O

	Continental	Givenchy
Power antenna	\$	\$
Fingertip speed control	\$	\$
Stalk controls with flash-to-pass	\$	\$
Illuminated glove box	\$	\$
Tilt steering wheel	\$	\$
Anti-Theft Alarm System	O	O
Remote fuel filler door release	\$	\$
Automatic parking brake release	\$	\$
Air Conditioner, Automatic Climate Control	\$	\$
Interval windshield wipers	\$	\$
Rear window defroster	\$	\$
Automatic-dim day/night mirror	O	O
Illuminated entry with instrument panel illumination	\$	\$
Tinted glass all around	\$	\$
Low oil-level warning lamp	\$	\$
Leather-wrapped steering wheel	\$	\$
Courtesy lights	\$	\$
Dual illuminated visor vanity mirrors	\$	\$
Rear high-intensity reading lamps	\$	\$
Front and rear floor mats	\$	\$
<b>TIRES/WHEELS</b>		
P215/70R15 WSW steel-belted radial tires	\$	\$
Puncture sealant WSW tires	O	O
Aluminum wheels (A)	\$	
Wire-spoke aluminum wheels (B)	O	\$

\$- Standard feature O-Optional feature



Aluminum wheel,



Wire-spoke aluminum wheel. See chart for availability.

EXTERIOR COLOURS

Standard on Continental

Light Sandalwood	Midnight Black
Platinum Clearcoat Metallic	Arctic White
Graphite Clearcoat Metallic	
Silver Blue Clearcoat Metallic	
Dark Shadow Blue Clearcoat Metallic	
Cabernet Clearcoat Metallic	
Rose Quartz Clearcoat Metallic	
Titanium Clearcoat Metallic	
Crystal Clearcoat Metallic	
Dark Sandalwood Clearcoat Metallic	
Silver Sand Clearcoat Metallic	

Optional on Continental

Prairie Mist Glamour Clearcoat Metallic
Dark Taupe Glamour Clearcoat Metallic
Glacier Blue Glamour Clearcoat Metallic
Platinum Clearcoat Metallic/Graphite Clearcoat Metallic
Midnight Black/Graphite Clearcoat Metallic
Silver Blue Clearcoat Metallic/Glacier Blue Glamour Clearcoat Metallic
Midnight Black/Dark Taupe Glamour Clearcoat Metallic
Silver Sand Clearcoat Metallic/Dark Sandalwood Clearcoat Metallic

Standard and Exclusive on Givenchy

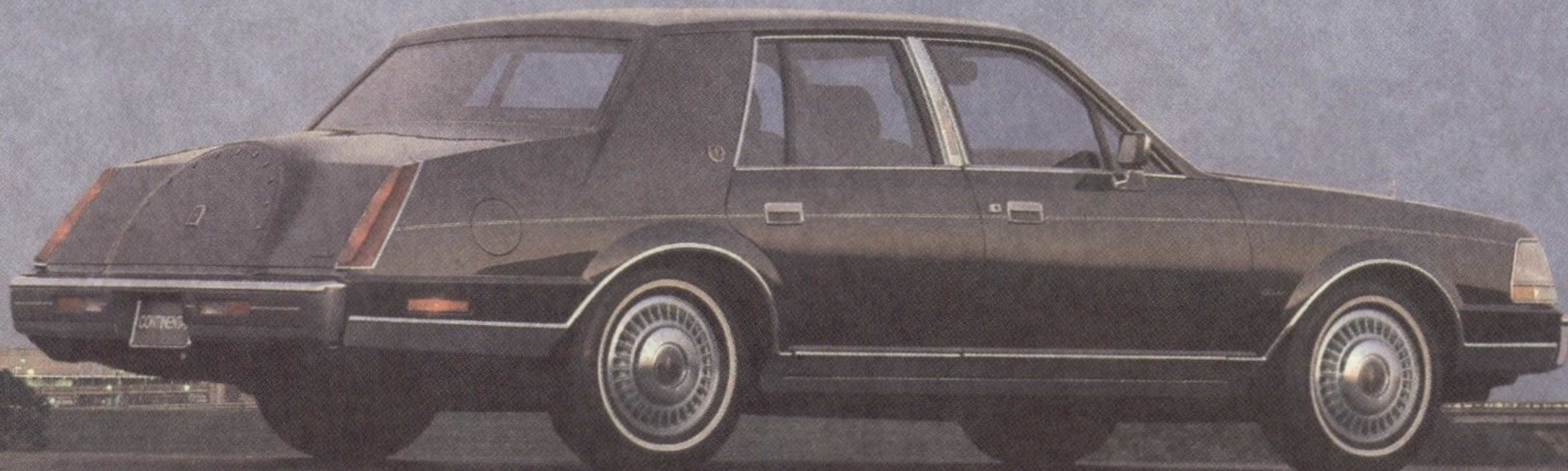
Standard on Continental		
Cabernet	Raven Black	Sandalwood
Shadow Blue	Oxford Gray	Taupe
Standard on Givenchy		Taupe



The optional power glass moonroof slides open or closed at the touch of a button. A sliding sun shade panel is included.

DIMENSIONS

Wheelbase mm (in.)	2756	(108.5)
Overall length mm (in.)	5098	(200.7)
Overall width mm (in.)	1869	(73.6)
Overall height mm (in.)	1412	(55.6)
Tread mm (in.) (front/rear)	1483/1499	(58.4/59.0)
Headroom mm (in.) (front/rear)	978/958	(38.5/37.7)
Legroom mm (in.) (front/rear)	1067/973	(42.0/38.3)
Shoulder room mm (in.) (front/rear)	1463/1468	(57.6/57.8)
Hiproom mm (in.) (front/rear)	1334/1323	(52.5/52.1)
Luggage capacity litres (cu. ft.)	416	(14.7)
Fuel capacity litres (Imp. gal.)	76.8	(16.9)
Curb weight kilogram (lb.)	1723 (3799)	1735 (3826)
(Continental, Givenchy)		





**Lincoln Town Car**  
**Undiminished size.**  
**Uncompromised luxury.**  
**Anything less wouldn't**  
**be Town Car.**

In a world where the difference between promise and product is often considerable, this automobile delivers exactly what you expect of it. Uncompromised room and comfort. Exceptional quiet. A smooth, substan-

tial ride. Plus a look and presence on the road that is becoming increasingly distinctive.

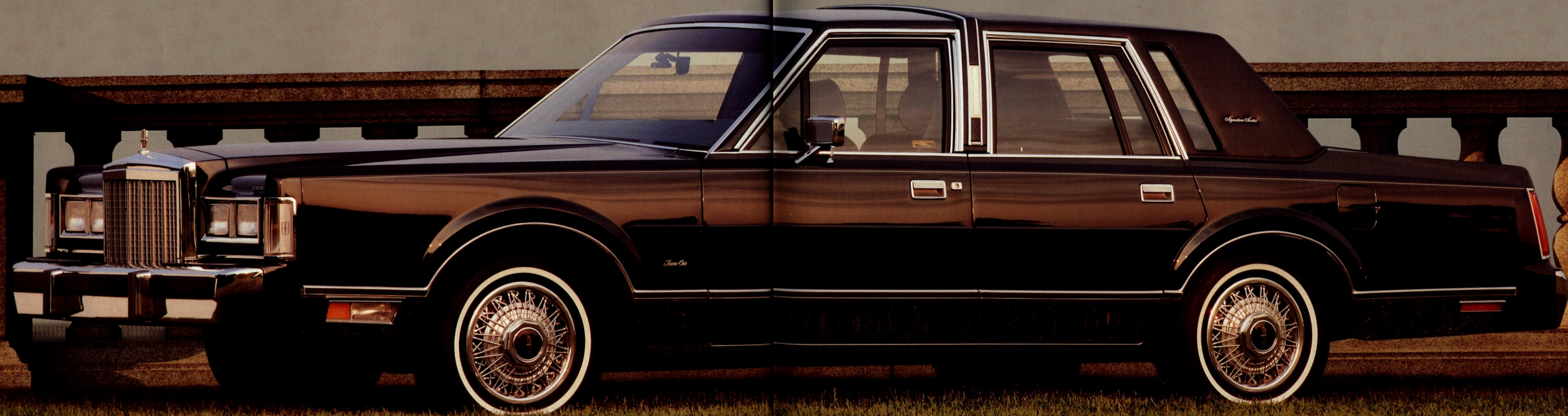
Town Car, represented here in the handsome Signature Series, remains one of the few traditional six-passen-

ger luxury sedans built in North America. With more room inside than any other North American car, excluding station wagons and vans.

The uncompromising Lincoln attitude toward luxury extends to quality,

too. For only a genuine commitment to product integrity could yield such an automobile as Town Car.

*1987 Lincoln Town Car  
Signature Series  
in Dark Shadow Blue.  
Clearcoat Metallic.*





1987 Lincoln Town Car Signature Series interior in Shadow Blue. Some features shown may be optional.

**Signature Series. A space shaped with one overriding goal. Your comfort.**

Most people expect a luxury car to reach its highest standards of performance here.

The expectation is well rewarded in Town Car in front, plush 50/50 twin comfort lounge seats provide supple, yet supportive, seating. The rear seating is equally spacious. To put you more at ease, full-length armrests come at every door with a folding centre armrest front and back. The necessary convenience controls are all power and all standard. That includes six-way adjustable driver's and front passenger's seats. Plus power windows, vents, door locks and outside mirrors.

To keep this comfortable environment quiet, rubber body mounts, placed throughout the car, help insulate the interior from road noise, vibration and harshness. The inside of the hood, roof and doors are cloaked with a generous amount of sound insulation to further reduce noise.

**JBL SOUND SYSTEM**  
This year, you have the option of filling this spacious interior with a remarkable new sound: the extraordinary JBL audio system pictured here. This 12-speaker system, a joint venture of Ford Audio and JBL (the



speakers used in over 70% of the world's top recording studios) will lend concert hall fidelity to the Town Car interior. A compact digital disc system is also available to complement the system.







*1987 Lincoln Town Car  
Cartier Designer Series in  
Crystal Clearcoat Metallic  
over Titanium Clearcoat  
Metallic with a Crystal  
vinyl coach roof.*

**Cartier Designer Series. Town Car promises distinctiveness. Cartier ensures it.**

Once again the designers from Cartier, the internationally acclaimed jewelry and watch designers, have crafted an automobile of singular distinction.

It comes but one way. An elegant new tu-tone paint treatment which casts a traditional pewter-like shade of silver over a smokier gray called Titanium. Rich Crystal and Maroon bodystripping separates the colours while accenting the car's formal lines. The exterior is capped with a fashionable Crystal vinyl coach roof set off by a distinctive wrapover moulding. And just so no one mistakes who designed your Town Car, the Cartier script appears in gold in the rear quarter opera windows.

Any good design includes the mind as well as the eye, so a keyless entry system is standard for both door and trunk lid locks. The headlights dim automatically with oncoming traffic. The outside rearview mirrors even have an internal heating element to clear away frost and fog.



1987 Lincoln Town Car  
Cartier Designer Series  
interior in Oxford Gray  
leather. Some features  
shown may be optional.

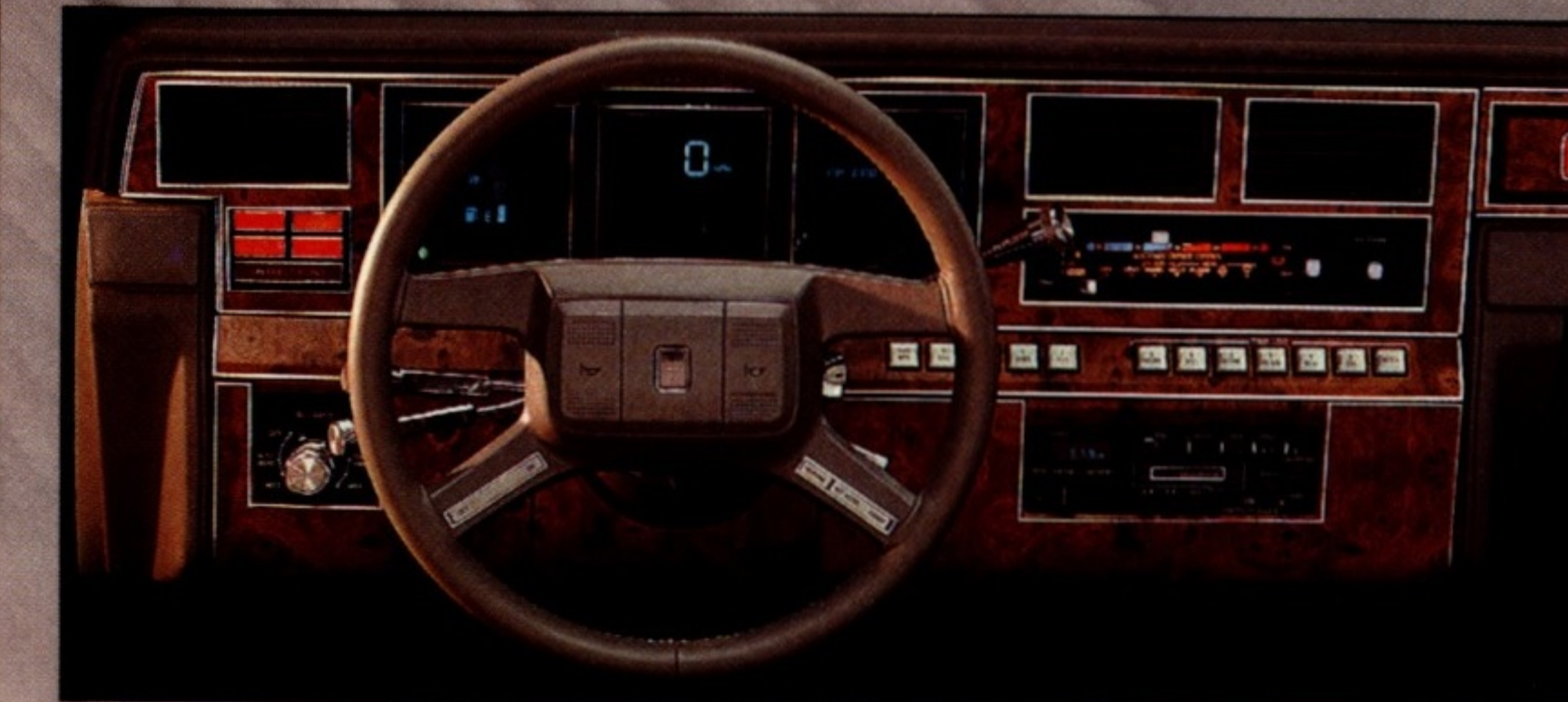
### Cartier interior. Town Car comfort with an artistic dimension.

In tones that complement Cartier Town Car's new exterior colour scheme, the Cartier designers have created an equally luxurious interior.

Oxford Gray leather with rich, pleated inserts featuring Raven Black detailing is one seating choice. All Oxford Gray leather is the other. Cartier is even at your fingertips with a steering wheel wrapped in Oxford Gray leather.

Functional considerations are also addressed in the Cartier interior. Speed control is mounted on the steering wheel for long-trip convenience. Gentle chimes remind you of left keys, unfastened seatbelts and more. The plush 30 ounce floor carpeting even helps provide sound insulation. Features that make Cartier not only comfortable, but capable, as well.

*The electronic instrument panel and Message Centre is an option that gives you easy access to critical road data. Speed, fuel and elapsed mileage are displayed digitally. The Message Centre features a computerized information system that delivers a wealth of trip information through a 12-button keyboard.*





Even in its most basic form, Town Car delivers exceptional luxury.

When some automakers describe a "base" automobile, one gets the impression the car is somehow not complete. Town Car is a notable exception. The car you see here, for example, is exactly what you get when you order a "base" Lincoln Town Car.

A full vinyl roof. Body accent stripes. Centre pillar coach lamps. Marvelous paint. These, in themselves, demand a new definition of "base".

Yet there's considerably more: a standard 5.0-litre V-8 with sequential multi-port electronic fuel injection that improves both engine response and efficiency. A four-speed automatic overdrive transmission. A 634 litre (22.4 cubic-foot) trunk. (No other North American-made passenger car has a larger one.) Nitrogen gas-pressurized shock absorbers for state-of-the-art ride control. Automatic Climate Control. And electronic AM/FM stereo cassette with six-speaker Premium Sound. All standard items.

That's the nice thing about Lincoln. Even when you're just after basic luxury, it's surprising how far you can go.

1987 Lincoln Town Car in Cabernet Clearcoat Metallic. Available in a variety of colours.





Lincoln Town Car...with such a lengthy list of standard features, there's very little to add.

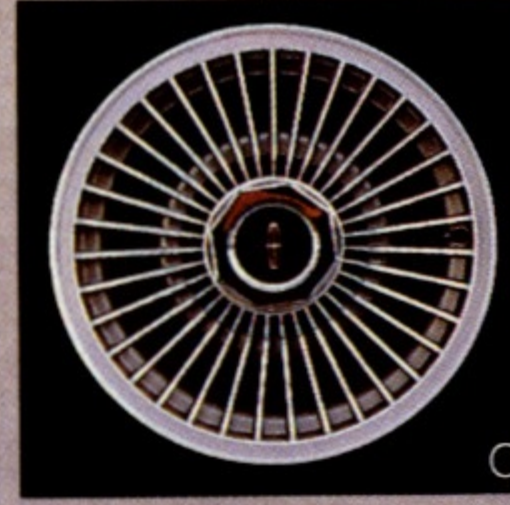
	Town Car	Signature	Cartier
FUNCTIONAL FEATURES			
5.0-litre V8 engine	\$	\$	\$
Sequential multi-port electronic fuel injection	\$	\$	\$
Electronic Engine Controls (EEC-IV)	\$	\$	\$
Four-speed automatic overdrive transmission	\$	\$	\$
Power steering	\$	\$	\$
Engine block heater	O	O	O
Power front disc/rear drum brakes	\$	\$	\$
Nitrogen gas-pressurized shock absorbers	\$	\$	\$
Engine temperature gauge	\$	\$	\$
Traction-Lok axle	O	O	O
Trailer Tow Packages (Class III)	O	O	O
Automatic load-leveling suspension	O	O	O
Conventional full-size spare tire	\$	\$	\$
Maintenance-free battery (71 amp)	\$	\$	\$
EXTERIOR FEATURES			
Quad-rectangular halogen headlamps	\$	\$	\$
Cornering lamps and coach lamps	\$	\$	\$
Full vinyl roof	\$		
Luxury half-vinyl coach roof with frenched rear window	O	\$	\$
Full carriage roof	O	O	
Headlamp convenience system		\$	\$
Illuminated/keyless entry system	O	\$	\$
Single key entry/ignition	\$	\$	\$
Power decklid pulldown	O	\$	\$
Power fold-away heated mirrors	\$	\$	\$
Illuminated thermometer in left-hand mirror	\$	\$	\$
Bodyside accent tape stripes			\$
Hood and bodyside accent stripes	\$	\$	
Premium bodyside mouldings	\$	\$	\$



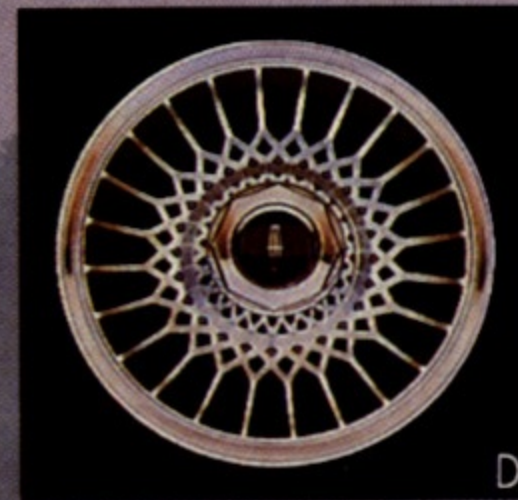
Full wheel covers



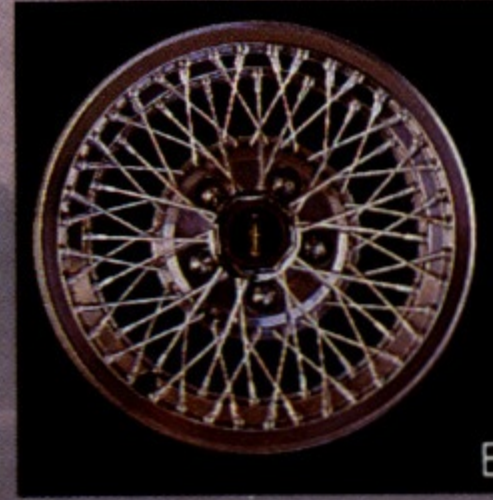
Wire-style wheel covers



Turbine-spoke aluminum wheels



Lacy-spoke aluminum wheels



Wire-spoke aluminum wheels

	Town Car	Signature	Cartier
Bright rocker panel mouldings	\$		
Flush bright bumpers with front bumper guards	\$	\$	\$
Front and rear rub strips	\$	\$	\$
Wide, bright lower rocker panel moulding	\$	\$	\$
Bodyside protection moulding	O	O	O
Dual-Shadow paint	O	O	\$
Glamour paint	O	O	
INTERIOR/CONVENIENCE FEATURES			
50/50 twin comfort lounge seats	\$	\$	\$
Six-way power driver's seat	\$	\$	\$
Driver and passenger manual recliners	\$	\$	\$
Six-way power front passenger seat	O	\$	\$
Articulated front seat headrests		\$	\$
Cloth seat upholstery	\$	\$	
Front- and rear-seat fold-down centre armrests	\$	\$	\$
Leather seat upholstery	O	O	
Front seatback robe cords and map pockets		\$	\$
Leather and cloth, or all-leather seating surfaces			\$
Electronic AM/FM stereo search radio with cassette	\$	\$	\$
Premium Sound six-speaker system	\$	\$	\$
Ford JBL high fidelity 12-speaker audio system	O	O	O
Compact disc player (requires Ford JBL system)	O	O	O
Power antenna	\$	\$	\$
Electronic instrumentation with message centre	O	O	O
Power glass moonroof	O	O	O
Anti-Theft Alarm System	O	O	O
Automatic-dim day/night rearview mirror	O	O	O
Power windows, vents and door locks	\$	\$	\$
Fingertip speed control	\$	\$	\$
Tilt steering wheel	\$	\$	\$
Air Conditioner, Automatic Climate Control	\$	\$	\$
Tinted glass	\$	\$	\$
Rear window defroster	\$	\$	\$
Remote-control decklid release	\$	\$	\$
Automatic parking brake release	\$	\$	\$
Interval wipers	\$	\$	\$
Dual beam map/dome light	\$	\$	\$
Courtesy lights and integral reflectors on front doors	\$	\$	\$
Roof rail assist handles at each door	\$	\$	\$
Four-spoke, colour keyed luxury steering wheel	\$	\$	
Leather-wrapped steering wheel	O	O	\$
Instrument panel with three-pod instrument cluster	\$	\$	\$
Trip odometer	\$	\$	\$
Carpeting on floor, lower doors and luggage compartment	\$	\$	\$
30-ounce floor carpeting		\$	\$
Front floor mats	\$	\$	\$

	Town Car	Signature	Cartier
Rear floor mats		\$	\$
Day/night inside rearview mirror	\$	\$	\$
Woodtone appliques on instrument panel and door trim	\$	\$	\$
Dual illuminated visor vanity mirrors	\$	\$	\$
TIRES/WHEELS			
P215/70R15 WSW steel-belted radial tires	\$	\$	\$
Puncture sealant tires	O	O	O
Full wheel covers (A)	\$		
Locking wire wheel covers (B)	O	\$	O
Turbine-spoke aluminum wheels (C)	O	O	\$
Lacy-spoke aluminum wheels (D)	O	O	O
Wire-spoke aluminum wheels (E)	O	O	O
S- Standard features O- Optional feature			
EXTERIOR COLOURS			
Standard on Town Car and Signature			
Midnight Black			
Arctic White			
Crystal Clearcoat Metallic			
Light Sandalwood			
Dark Sandalwood Clearcoat Metallic			
Titanium Clearcoat Metallic			
Platinum Clearcoat Metallic			
Graphite Clearcoat Metallic			
Rose Quartz Clearcoat Metallic			
Cabernet Clearcoat Metallic			
Dark Shadow Blue Clearcoat Metallic			
Silver Blue Clearcoat Metallic			
Silver Sand Clearcoat Metallic			
Standard and Exclusive on Cartier			
Crystal Clearcoat Metallic/ Titanium Clearcoat Metallic			
Optional on Town Car and Signature			
Prairie Mist Glamour Clearcoat Metallic			
Dark Taupe Glamour Clearcoat Metallic			
Glacier Blue Glamour Clearcoat Metallic			
Platinum Clearcoat Metallic/ Graphite Clearcoat Metallic			
Midnight Black/ Graphite Clearcoat Metallic			
Silver Blue Clearcoat Metallic/ Glacier Blue Glamour Clearcoat Metallic			
Dark Taupe Glamour Clearcoat Metallic/ Rose Quartz Clearcoat Metallic			
Silver Sand Clearcoat Metallic/ Dark Sandalwood Clearcoat Metallic			
INTERIOR COLOURS			
Oxford Gray			
Shadow Blue			
Cabernet			
Taupe			
Raven Black			
Oxford White/Oxford Gray			
Sandalwood			
Oxford White/Cabernet			
Oxford White/Shadow Blue			
VINYL ROOF COLOURS			
Standard on Town Car and Signature			
Light Sandalwood			
Dark Sandalwood			
Silver Blue			
Crystal			
Dark Shadow Blue			
Dark Taupe			
Midnight Black			
Arctic White			

Light Charcoal		
Prairie Mist		
Midnight Wine		
Standard on Cartier		
Crystal		
CAMBRIA CLOTH CARRIAGE ROOF		
Optional on Town Car and Signature		
Midnight Black		
Dark Blue		
BAYVILLE VINYL CARRIAGE ROOF		
Optional on Town Car and Signature Series		
Arctic White		
Light Sandalwood		
Dark Taupe		
DIMENSIONS		
Wheelbase mm (in.)	2979 (117.3)	
Overall length mm (in.)	5563 (219.0)	
Overall width mm (in.)	1984 (78.1)	
Overall height mm (in.)	1420 (55.9)	
Tread mm (in.) (front/rear)	1580/1575 (62.2/62.0)	
Front headroom mm (in.)††	991 (39.0)	
Legroom mm (in.)	1105 (43.5)	
Shoulder room mm (in.)	1542 (60.7)	
Hiproom mm (in.)	1435 (56.5)	
Rear headroom mm (in.)	970 (38.2)	
Legroom mm (in.)	1069 (42.1)	
Shoulder room mm (in.)	1542 (60.7)	
Hiproom mm (in.)	1468 (57.8)	
Luggage capacity litres (cu. ft.)	634 (22.4)	
Fuel capacity litres (Imp. Gal.)	68.1 (15.0)	
Curb weight		
kilograms (lb.)	Town Car 1838 (4051)	
	Signature 1863 (4106)	
	Cartier 1853 (4086)	

†Interior dimensions with six-way power seat in rear-most position.  
††Front headroom two inches less with optional moonroof.



Open yourself up to a different Town Car experience with the optional power glass moonroof. It slides open or closed at the touch of a button and includes an integral sunshade/privacy panel.





# THE LINCOLN CARD



## OUR CONFIRMATION OF QUALITY. FOR THREE YEARS, VIRTUALLY ALL YOU'LL PAY FOR IS FUEL.

The Lincoln Card provides you with one of the most comprehensive owner protection programs provided by any luxury vehicle manufacturer in North America or abroad.

A three year unlimited mileage plan that covers all scheduled maintenance services as listed in the owner guide, replacement of items necessitated by wear and all repairs that may be necessary due to defects in materials. The Lincoln Card also includes towing and transportation assistance. Damage caused by accidents and abuse, or

fluids required between scheduled maintenance intervals, tires, vehicles in daily rental, taxi or limousine service are not included in the program.

Your Lincoln dealer would be more than pleased to review with you all of the information regarding this preferential plan, to make your Lincoln driving years as pleasurable as possible. Under the program, the Lincoln Card is also transferable at no charge to those subsequent purchasers who own the vehicle within the 3 year period.

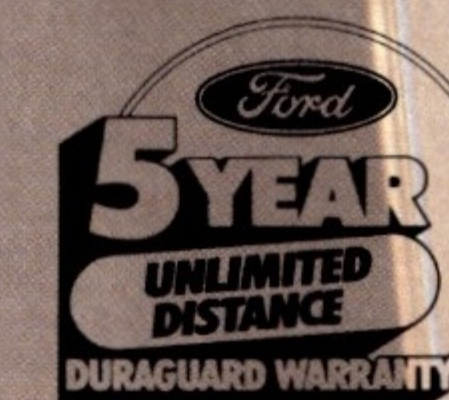
### Motorcraft EXCEEDS THE NEED

Genuine Ford and Motorcraft original equipment replacement parts are engineered and manufactured to Ford's high specifications. They're your best assurance of quality and long-term satisfaction because these replacement parts meet the same high standards as those installed in production.

#### CORROSION PROTECTION

All Lincoln cars are protected with the DURAGUARD System, which includes 7 processes built in at the factory as standard equipment, to provide corrosion protection as follows:

- precoated steel on doors, quarter panels, hoods, fenders and other selected areas;
- galvanized steel on rocker panels, selected cowl tops and underbody parts;
- vinyl sealer on the underside of rear wheelhouses;
- phosphate coating on the entire car body after a super cleaning process;
- an electrocoat process to apply corrosion resistant primer paint, also on the entire body;
- aluminized wax sprayed into the hard-to-reach lower body areas and the inside surfaces of doors;
- protective vinyl coating behind the wheel openings and along the lower body side area.



The DURAGUARD System is backed by a no-extra charge 5 year unlimited distance manufacturer's warranty against corrosion perforation. This warranty, transferable to succeeding owners, covers the cost of both labour and materials for repair of perforation of sheet metal and all other components except exhaust system, caused by corrosion.



Ford Credit Canada Limited is interested in helping to fill the transportation needs of every qualified buyer of a Ford product. A participating dealer can arrange financing terms or a Red Carpet Lease® tailored to your circumstances. Ford Credit Canada Limited has offices conveniently located throughout Canada.

This brochure has been prepared only as a general guide to the customer and every effort has been made to ensure that all information is correct at the time of printing. However, some errors may have been included and some of the information or specifications may have been changed since the time of printing. Your dealer will have full details on any changes and/or corrections and you should ask him to bring you up to date at the time of your purchase. Ford Motor Company of Canada, Limited reserves the right to change prices, colours, materials, specifications and models and to discontinue models without notice and without incurring obligations of any kind. Some features described or shown may be optional at extra cost. Some options are required in combination with other options.

Buy or lease your Lincoln from your Lincoln-Mercury Dealer.





LINCOLN MARK VII  
LINCOLN CONTINENTAL  
LINCOLN TOWN CAR

