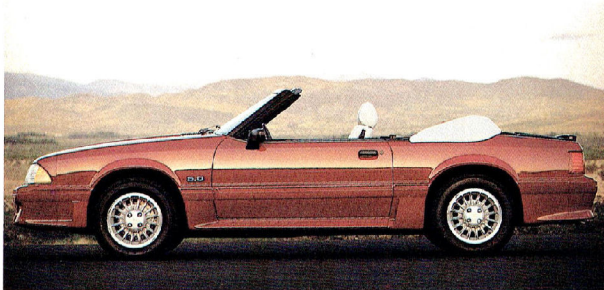


# 1989 FORD MUSTANG





# MUSTANG COBRA GT



*Mustang Cobra GT convertible in Cabernet Red. Shown with optional Oxford White leather seating surfaces.*

*Mustang Cobra GT hatchback in Dark Grey Metallic.*

Mustang Cobra GT is one of the quickest cars on the road. That's a pretty strong statement considering the competition. But Mustang Cobra GT backs it up.

The 5.0 litre V-8 has been continually improved over the years to its current status of 225 horsepower at 4,200 rpm and 300 ft. lb. of torque at only 3,200 rpm.

But there's more to Cobra GT than just an awesome V-8 engine.

There's a taut handling suspension system with gas-pressurized struts in front and Ford's Quadra-shock system with Traction-Lok axle in the rear. A 5-speed manual transmission with overdrive fifth gear or optional automatic overdrive transmission. Rack-and-pinion power steering with a quick ratio 15:1 steering gear. Unidirectional Goodyear Eagle P225/60VR 15-inch performance radials on 16-spoke cast aluminum wheels.

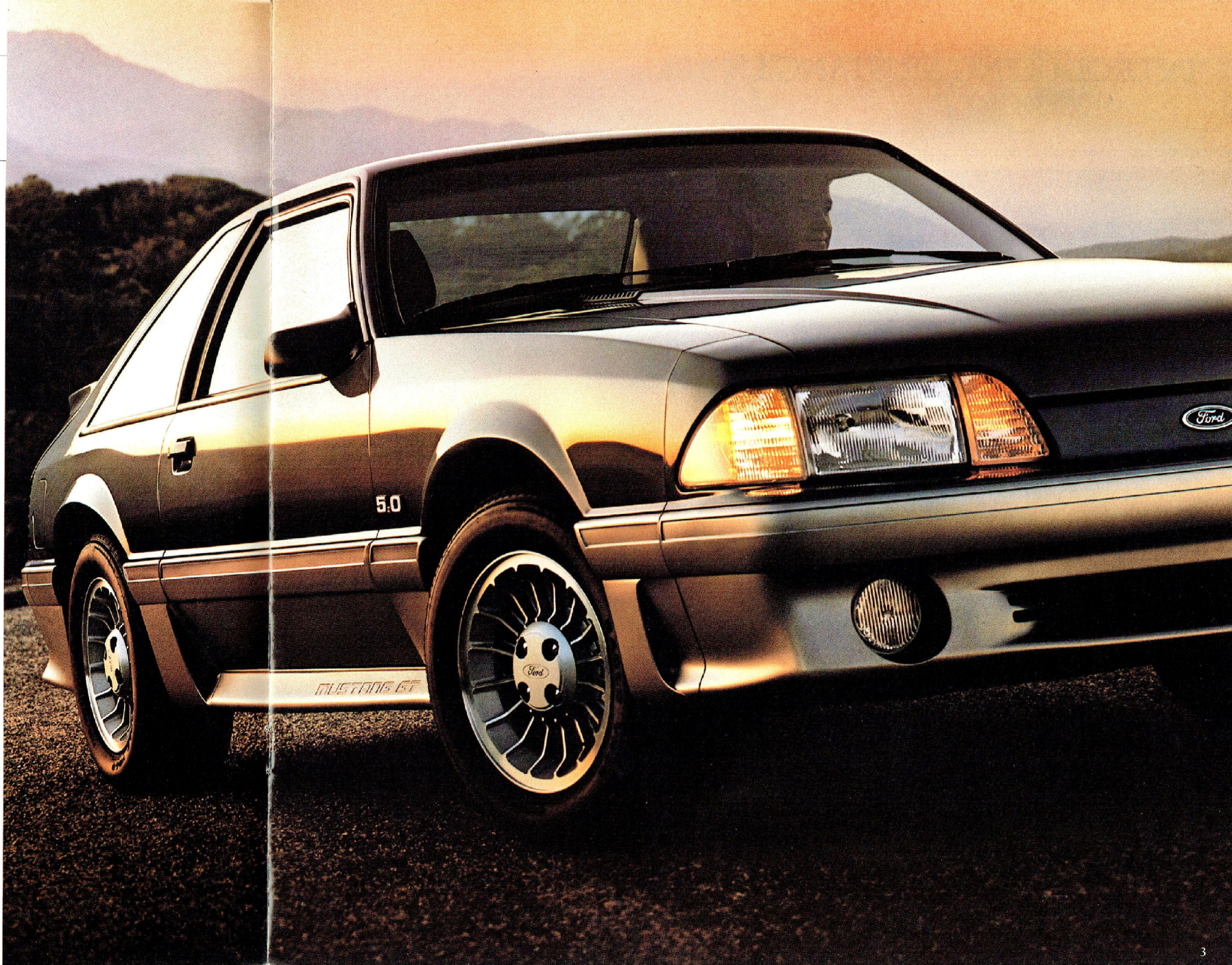
And then, of course, there's the bold, aggressive styling that makes Mustang Cobra GT instantly recognizable.

If you are of a performance mind, chances are you'll appreciate the interior of Mustang Cobra GT.

The full complement of analog gauges, including speedometer, tachometer, oil pressure, temperature and voltmeter, plus alert lights, helps you monitor engine performance.

The thick, soft-feel steering wheel tilts to five positions. The reclining, articulated front bucket seats are comfortable and firm with multiple adjustments including seat cushion side bolsters, under-thigh support and power lumbar support.

Even the brake and accelerator pedals are positioned to allow heel-and-toe downshifting and there is a left side foot-rest/support for the driver.



*Some equipment shown on these pages may be optional.*



# INTRODUCING MUSTANG LX 5.0L

For 1989, Mustang LX has an added twist—the LX 5.0L Sport. It comes with the awesome performance of the 5.0L Cobra GT engine and the taut handling of the Cobra GT suspension all wrapped up in the smooth styling of the LX.

And it's available in 2-door hatchback, 2-door sedan and convertible models.

The standard transmission is the 5-speed manual or you can opt for the convenience of the automatic overdrive transmission.

The suspension system is the same as that used for the Cobra GT. Gas-pressurized front struts and rear Quadra-shock set-up to give a firm, performance ride.

Quick 15:1 constant ratio power rack-and-pinion steering, Traction-Lok axle and performance radials with 10-hole cast aluminum wheels are also part of the package.

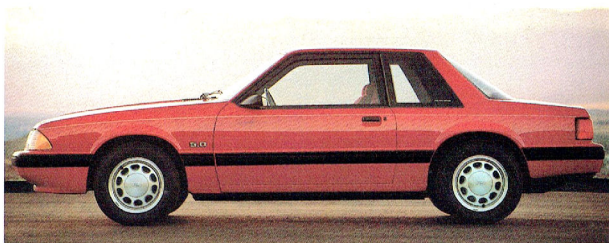
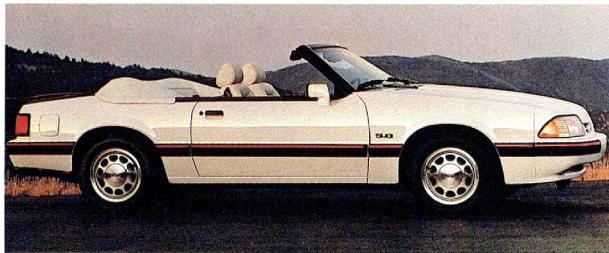
Hatchback and convertible models include articulated front bucket seats. The adjustable features of these seats include reclining backs, seat cushion side bolsters, under-thigh support, and power lumbar support. Low back buckets are included with 2-door sedan models.

*Mustang LX 5.0L 2-door hatchback in Black.*

*Mustang LX 5.0L convertible in Oxford White. Shown with optional Oxford White leather seating surfaces.*

*Mustang LX 5.0L 2-door sedan in Bright Red.*

*Some equipment shown on these pages may be optional.*





# MUSTANG LX

LX models are powered by a responsive 2.3 litre overhead cam 4-cylinder engine with electronically controlled multiple-port fuel injection. It is matched to a 5-speed manual transmission or optional 4-speed automatic overdrive.

The LX is well equipped, too. Rack-and-pinion power steering and front disc/rear drum power brakes are standard.

Inside are reclining low back bucket seats and centre console. Full analog instrumentation is also standard along with an electronic AM/FM stereo search radio.

Hatchback models feature a split-fold rear seat and fully carpeted cargo area with a window shade-type cover. Sedan models have over 254 litres (9 cu. ft.) of cargo area.

And with Mustang LX models you can get Preferred Equipment Extra Value Package 065A. It includes the power lock group, dual electric remote mirrors, speed control, styled road wheels and electronic AM/FM stereo with cassette tape player. All at no extra cost.

*Mustang LX 2-door sedan  
in Medium Shadow Blue  
Metallic.*



*Mustang LX convertible in  
Bright Red. Shown with  
optional Oxford White leather  
seating surfaces.*



*Mustang LX 2-door  
hatchback in Oxford White.*

*Some equipment shown on  
these pages may be optional.*





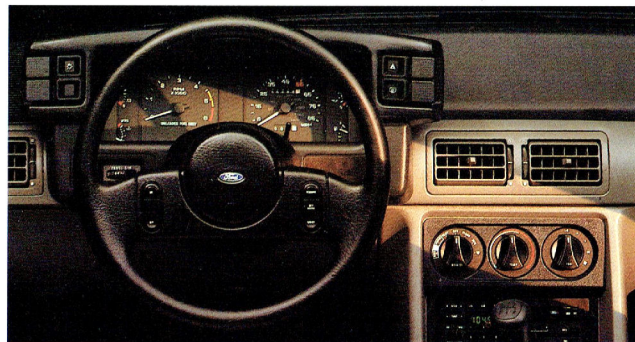
# MUSTANG INTERIOR

No matter how good it is to look at, driving Mustang is the ultimate reward. Mustang's front bucket seats are designed to be firm and supportive to help reduce fatigue. High density foam pads in the seat cushion and seat back are shaped to give a wraparound effect to help hold you in place. The front seat backs recline so you can drive in the position that's right for you.

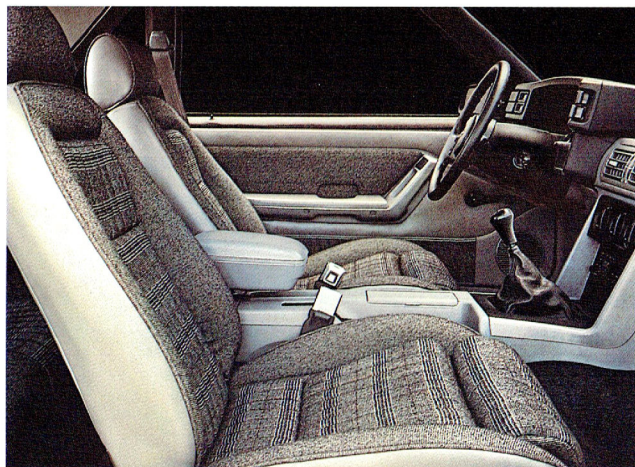
The rear bench seat provides room for two and in hatchback models it has a split-fold design that makes for a versatile cargo area.

In Cobra GT and the LX 5.0L (hatchback and convertible models), the articulated front bucket seats feature adjustable seat cushion side bolsters and an adjustable under-thigh support. There's also a power adjustable lumbar support in the front seat backs.

In all three models, the standard AM/FM stereo radio is electronically tuned and features four-speaker sound.



*The Mustang Cobra GT instrument panel (above) and interior (below). Some equipment shown may be optional.*



*Mustang Cobra GT front articulated bucket seats are shown above in Medium Grey.*

Or, order the Premium Sound System with six speakers and power amplifier.

The analog gauges are large and easy to read. And there is a full complement: fuel, temperature, voltmeter, oil pressure, speedometer and tachometer. The instrument cluster is also backlit for excellent night readability.

The optional speed control switches are set in the steering wheel spokes at your fingertips. Switches for headlights, emergency flasher and rear defroster are positioned high and directly in front of the driver so they are easy to reach and in clear view. For convenient operation, the turn signal lever includes controls for the interval wiper/washer, high beam and flash-to-pass. Climate control switches are rotary-designed to ease operation.

Both the left and right rear-view mirrors are remote controlled. In convertibles, the mirrors are electrically remote controlled and the windows and door locks are power.

*The Mustang LX interior (right), shown in Scarlet Red. Some equipment shown may be optional.*



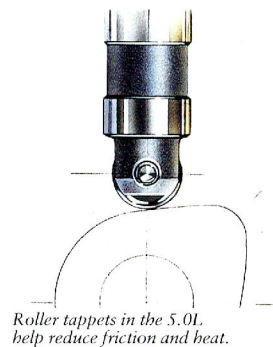


# MUSTANG ENGINEERING

Mustang's love for the road comes in part from its finely tuned suspension components matched to each model's personality.

In LX, for instance, the suspension utilizes gas-pressurized hydraulic struts and stabilizer bar in front along with gas-pressurized hydraulic shocks in the rear.

In Cobra GT and the new LX 5.0L Sport model, the components are designed to achieve higher performance capabilities. Some of those components are progressive rate springs and a larger stabilizer in front. In the rear is the Quadra-shock system. The system incorporates two vertically mounted gas-pressurized shocks, two horizontally mounted axle dampers and stabilizer bar for a "car on rails" feeling.



Roller tappets in the 5.0L help reduce friction and heat.

## THE HIGH PERFORMANCE 5.0 LITRE EFI HIGH OUTPUT (HO) V-8 ENGINE

The High Output V-8 engine is rated at 225 horsepower at 4,200 rpm. It also delivers 300 foot pounds of torque at 3,200 rpm.

Some of the components used to reach those impressive figures are: sequential multiple-port fuel injection with electronic

control; high performance induction-hardened camshaft; low friction roller tappets; double-roller timing chain; forged aluminum alloy pistons; stainless steel tuned tubular headers; large diameter dual exhausts and much more.

A standard 5-speed manual transmission with overdrive fifth lets you utilize all that power with direct linkage shifting. The clutch engagement is through a cable that is self adjusting to help compensate for clutch plate wear.

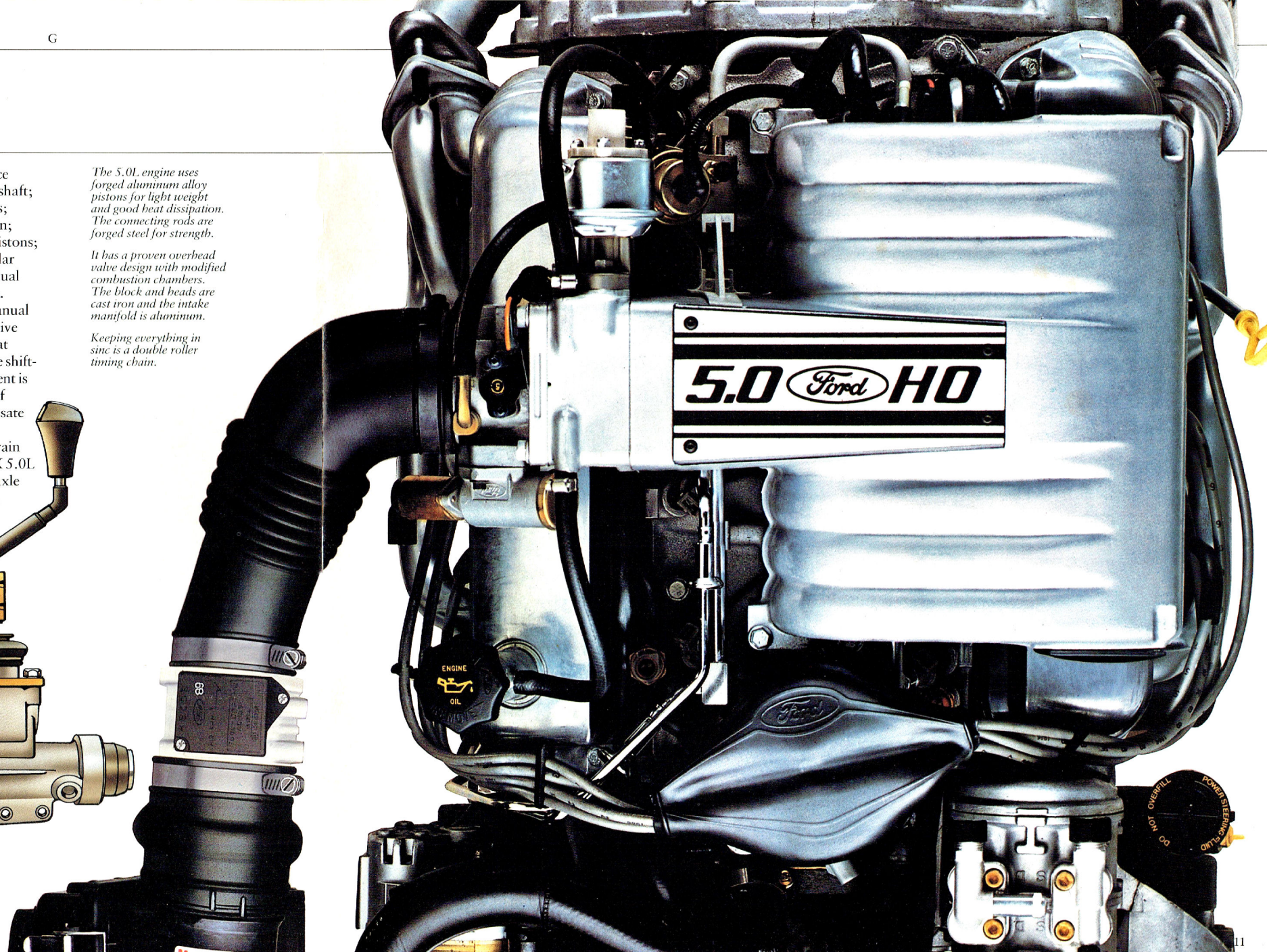
Completing the drivetrain for the Cobra GT and LX 5.0L is the Traction-Lok rear axle with 2.73:1 ratio. With a Traction-Lok axle, some of the power is automatically transferred to the rear wheel with the most traction.

*The 5.0L engine uses forged aluminum alloy pistons for light weight and good heat dissipation. The connecting rods are forged steel for strength.*

*It has a proven overhead valve design with modified combustion chambers. The block and heads are cast iron and the intake manifold is aluminum.*

*Keeping everything in sync is a double roller timing chain.*

*The standard Borg Warner 5-speed includes these gear ratios: 1st gear—3.35; 2nd gear—1.93; 3rd gear—1.29; 4th gear—1.00; 5th gear—0.68.*





# PREFERRED EQUIPMENT/ EXTRA VALUE PACKAGES

Preferred Equipment Packages are combinations of features that have proven popular with many car buyers. By combining them in groups, we simplify the ordering procedure.

Here's how it works:  
(1) Choose your series and body-style;  
(2) Select the Preferred Equipment Package with the features you want from the charts below;  
(3) If you would like to further personalize your Mustang, choose from the wide range of options on page 13.

Mustang LX 2-Door Sedan Hatchback and Convertible	PREFERRED EQUIPMENT PACKAGES	
	LX	LX 5.0 L SPORT
	EXTRA VALUE 065A	070A
5-Speed manual overdrive transmission	●	●
P195/75R 14 BSW steel-belted radial-ply tires	●	●
P225/60VRx15 BSW handling tires		●
Traction-Lok axle		●
Electronic AM/FM stereo radio with cassette	●	●
Cast aluminum wheels		●
Extra Value Features at No Extra Cost		
Power lock group	★	
Electronic AM/FM stereo radio with cassette	★	
Speed control	★	
Styled road wheels	★	
Dual electric remote control mirrors	★	

★ When you order your Mustang LX and equip it with the 2.3 L engine and Preferred Equipment Extra Value Package 065A, the extra value features indicated are included at No Extra Cost.

Mustang Cobra GT 2-Door Hatchback and Convertible	PREFERRED EQUIPMENT PACKAGES	
	5.0 L ENGINE	
	075A	076A
5-Speed manual overdrive transmission	●	●
Traction-Lok axle	●	●
P225/60VRx15 BSW handling tires/Cast aluminum wheels	●	●
Electronic AM/FM stereo radio with cassette	●	●
Power lock group		●
Premium sound system		●
Flip-Up open air roof (Hatchback)		●
Speed control		●
Power side windows		●
Dual electric remote control mirrors		●

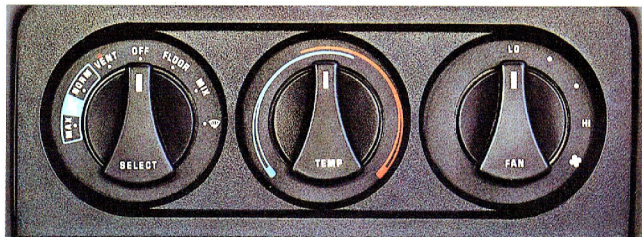
## Extra Value Package

For even greater value choose an Extra Value Package which includes power lock group, electronic AM/FM stereo radio with cassette, speed control, styled road wheels and electric remote control mirrors at no extra cost.

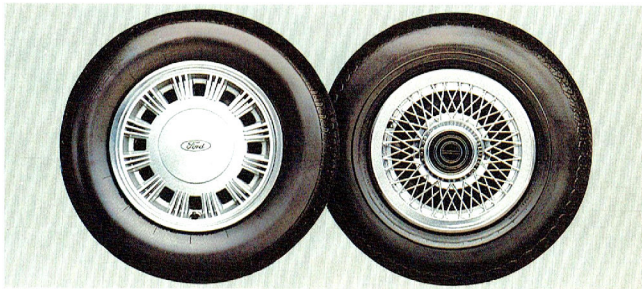
Contents of Preferred Equipment and Extra Value Packages are subject to change. For the latest information, consult your Ford dealer.



Optional electronic AM/FM stereo with cassette tape player and Premium Sound System.



Optional air conditioning with rotary controls.



Optional styled road wheels for LX models (part of the LX Extra Value Package 065A). Optional wire-style wheel covers for LX models (except 5.0 L Sport).

# STANDARD FEATURES AND OPTIONS

Mustang	LX	LX 5.0 L SPORT	COBRA GT
ENGINEERING			
2.3 L EFI I-4 engine	S		
5.0 L EFI V-8 engine		S	S
5-Speed manual overdrive transmission	S	S	S
4-Speed automatic overdrive transmission	0	0	0
P195/75R14 BSW all-season tires	S		
P195/75R14 WSW all-season tires	0		
P225/60VR15 BSW all-season tires		S	S
Traction-Lok axle		S	S
Handling suspension package <sup>(1)</sup>		S	S
Engine Block heater	0	0	0
58 L (12.8 Imp. gal.) fuel tank	S	S	S
EXTERIOR			
Flush aerodynamic halogen headlamps	S	S	S
Lower bodyside road abrasion protection	S	S	S
Black bodyside protection mouldings	S	S	S
Flush quarter window glass	S	S	S
Wraparound taillamps w/tri coloured lenses	S	S	S
Dual remote control mirrors	S	S	S
Dual electric remote control mirrors	0	0	0
Single wing rear spoiler w/integrated stop lamp (Hatchbacks)	S	S	S
Luggage rack w/integrated stop lamp (Convertibles)	S	S	S
Hella <sup>®</sup> fog lamps			S
Turbine wheel covers	S		
10 hole cast aluminum wheels		S	
16 spoke cast aluminum wheels			S
Styled road wheels	0		
Wire style wheel covers	0		
Lower bodyside two-tone titanium accent			0
Bodyside moulding insert stripe	0	0	0
INTERIOR			
Low-back reclining cloth bucket seats	S	S <sup>(2)</sup>	
Low-back reclining vinyl bucket seats	0	0 <sup>(2)</sup>	
Cloth articulated sport bucket seats		S <sup>(4)</sup>	S
Leather articulated sport bucket seats (convertibles only)	0	0	0
Split/fold-down rear seat (Hatchbacks)	S	S	S
Centre console	S	S	S
Interval wipers	S	S	S
Cargo area cover (Hatchbacks)	S	S	S
Tachometer, trip odometer, voltmeter, temperature, fuel & oil pressure gauges	S	S	S
Light group <sup>(3)</sup>	S	S	S
Dual visor mirrors	S	S	S
Dual illuminated visor mirrors	0	0	0
Flip-up open-air roof (Hatchbacks)	0	0	0
Power side windows	0	0	0

Mustang	LX	LX 5.0 L SPORT	COBRA GT
INTERIOR (cont'd)			
Rear window defroster	S	S	S
Power lock group	0	0	0
Side window demisters	S	S	S
Tinted glass	S	S	S
Speed control	0	0	0
Air conditioner	0	0	0
Electronic AM/FM stereo radio w/clock	S	S	S
Electronic AM/FM stereo radio w/cassette and clock	0	0	0
Premium sound system	0	0	0
Radio credit option	0	0	0
Tilt steering wheel	0	0	S

(1) Includes variable rate springs, gas-filled front struts, Quadra-shock rear suspension (gas-filled vertical shocks, horizontal axle dampers), upsized front stabilizer bar, rear stabilizer bar, 15:1 ratio steering gear, revised ball joints, front strut assembly and mount, lower spring insulator and front and rear spring dampers, adjusted spring and bushing rates. (2) Includes lights for engine compartment, luggage compartment/cargo area, ashtray, glove box, dual beam dome/map light (mirror-mounted Convertibles), and headlamps "on" reminder chime. (3) Sedan only. (4) Hatchback and Convertible.  
S = Standard 0 = Optional

## Colours & Trims

Interior colours	Regatta Blue	Scarlet Red	Medium Grey	Sand Beige	White/Red <sup>(1)</sup>	White/Blue <sup>(1)</sup>	White/Grey <sup>(1)</sup>
Exterior colours							
Black		X	X	X	X		X
Dark Grey Metallic		X	X				X
Light Grey		X	X				X
Bright Red		X	X	X	X		
Cabernet Red		X	X	X	X		X
Medium Shadow Blue Metallic	X		X			X	
Tropical Yellow				X			X
Deep Shadow Blue Metallic	X		X			X	
Bright Regatta Blue Metallic	X		X			X	
Almond				X			
Oxford White	X	X	X	X	X	X	X

Some of these paint and trim colours are shown in this catalogue. On the printed page, of course, colours are at best only representative of the originals. Your Ford dealer can show you actual samples of paint.  
(1) Available only on Convertible.



# SPECIFICATIONS

## MUSTANG COBRA GT AND LX 5.0L

Engine type	5.0L overhead valve V-8
Compression ratio	9.0:1
Induction system	Electronic sequential multiple-port fuel injection
Fuel tank	58 litres (12.8 imp. gal.) with tethered cap
Transmission	Standard 5-speed manual Optional automatic overdrive
Suspension, front	Modified MacPherson, Nitrogen gas-pressurized hydraulic struts, variable rate coil springs, stabilizer bar
Suspension, rear	Variable rate coil springs, Quadra-Shock with vertically mounted nitrogen gas-pressurized hydraulic shocks, horizontally-mounted hydraulic with freon-filled bag axle dampers, stabilizer bar
Steering	Power rack-and-pinion 15:1 on centre ratio
Brakes	Power front disc/rear drum
Wheels	15-inch cast aluminum, (16-spoke style on GT; 10-hole style on LX 5.0L)
Tires	P225/60VR15 unidirectional Goodyear performance radials

## MUSTANG LX

Engine type	2.3L OHC 4-cylinder
Compression ratio	9.5:1
Induction system	Electronic multiple port fuel injection
Fuel tank	58 litres (12.8 imp. gal.) with tethered cap
Transmission	Standard 5-speed manual Optional automatic overdrive
Suspension, front	Modified MacPherson, nitrogen gas-pressurized hydraulic struts, coil springs, stabilizer bar
Suspension, rear	Four-bar link, nitrogen gas-pressurized hydraulic shocks, coil springs
Steering	Power rack-and-pinion, 20:1 ratio
Brakes	Power front disc/rear drum
Wheels	Stamped steel, 14 x 5 inch
Tires	Standard P195/75R14 BSW steel-belted radials Optional P195/75R14 WSW steel-belted radials

## DIMENSIONS

Sedan/Hatchback/Convertible

Wheelbase: mm (in.)	2552 (100.5)
Length: mm (in.)	4561 (179.6)
Height: mm (in.)	1323 (52.1)/1323 (52.1)/1318 (51.9)
Width: mm (in.)	1755 (69.1)
Tread—front: mm (in.) (1)	1437 (56.6)
Tread—rear: mm (in.)	1447 (57.0)
Trunk or cargo volume: litres (cu. ft.) (2)	280 (9.9)/345 (12.2)/181 (6.4)
Fuel capacity: litres (imp. gal.)	58 (12.8)
Curb weight: kg (lb)	1251 (2760) 1279 (2821) 1343 (2961)

(1) 1470 mm (57.9 in.) with Cobra GT Hatchback

(2) 849 litres (30.0 cu. ft.) with rear seat backs down (Hatchback)

# SAFETY AND OWNER BENEFITS

Ford Motor Company strongly encourages all passengers to use their safety belts.



## Ford Safety Design Features

### VEHICLE OPERATION

☐ Split service hydraulic brake system with alert light ☐ Corrosion-resistant brake lines ☐ Flash-to-pass headlamps ☐ Turn indicator lever with lane-changing signal feature ☐ Hazard flasher ☐ Backup lights ☐ Side marker lights ☐ Parking lights coupled with headlamps ☐ High-mount brake lamp ☐ Variable-speed windshield wipers ☐ Windshield washers ☐ Outside rearview mirrors ☐ Glare-reduced instrument panel, windshield wiper arms and windshield pillars ☐ Uniform transmission shift quadrant (on all cars equipped with automatic transmission) ☐ Continuously variable illumination intensity (instrument panel illumination) ☐ Safety hood latch system ☐ Responsive windshield defroster system ☐ Tamper-resistant (non-reversing) odometer

### OCCUPANT PROTECTION

☐ Safety-designed front end structure ☐ Safety-designed roof structure (except convertibles) ☐ Steel guard rails in side doors ☐ Safety-designed door hinges and double yoke safety door latches ☐ Integral lap and shoulder belts with automatic retractors for occupants of front

seats ☐ Safety belt fastening reminder light and buzzer for the driver's seat ☐ Lap belts with retractors for rear seat occupants ☐ Energy-absorbing steering column ☐ Energy-absorbing armrests and safety-designed door handles ☐ Energy-absorbing instrument panel with padding ☐ Energy-absorbing sun visors ☐ Energy-absorbing front seat back tops ☐ Self-locking seat back latches ☐ Head restraints for front seat occupants ☐ Safety glove box latch ☐ Inside yieldaway rearview mirror ☐ Impact-absorbing laminated safety glass windshield ☐ Flame-resistant interior materials ☐ Safety-designed coat hooks ☐ Safety-designed radio control knobs and push buttons

### ANTI-THEFT

☐ Locking steering column with key chime (with push button key release) ☐ Visible vehicle identification number.

### 6-YEAR/100,000 KM POWERTRAIN WARRANTY

Ford's powertrain warranty covers all 1989 cars for 6 years or 100,000 km (60,000 miles), whichever comes first. This limited warranty covers major powertrain components. Certain restrictions and deductible apply. Ask to see a copy of this warranty when you visit your Ford dealer.

### 8 KM/H (5-MPH.) BUMBERS

Bumper systems on Ford Mustang are designed to protect lamps, cooling system, exhaust and other body components in the event of a minor

impact. Ford equips Mustang and every other car it makes with bumpers designed to absorb impacts of 8 km/h (5 mph).

### FORD QUALITY CORROSION PROTECTION

Every Ford car built in North America is protected with the Ford DURAGUARD System, which includes 7 processes built in at the factory as standard equipment, to provide corrosion protection as follows: ☐ precoated steel on doors, quarter panels, hoods and other selected areas; ☐ galvanized steel on rocker panels, selected cowl tops and underbody parts; ☐ vinyl sealer on the underside of rear wheel-houses; ☐ phosphate coating on the entire car body after a super cleaning process; ☐ an electrocoat process to apply corrosion resistant primer paint on the entire body; ☐ aluminized wax sprayed into hard-to-reach lower body areas, and the inside surfaces of doors; ☐ protective vinyl or urethane coating behind the wheel openings and along the lower bodyside area.

### 6 YEAR/160,000 KM CORROSION WARRANTY

The DURAGUARD System is backed by a no-extra charge 6 year/160,000 kilometre (100,000 mile) manufacturer's warranty against corrosion perforation. This warranty, trans-

ferable to succeeding owners, covers the cost of both labour and materials for repair of perforation of sheet metal and all other components except exhaust system, caused by corrosion. See your Ford dealer for details of this limited warranty.



Ford dealers\* offer the Lifetime<sup>†</sup> Service Guarantee (Permanent<sup>†</sup> Repair Protection in the Province of Quebec). Under this program, Ford dealers\* stand behind their repairs to Ford built cars and light trucks for as long as you own your vehicle. This means you pay for a covered repair once and *never again*. If the same part ever has to be replaced again through normal use, your Ford dealer\* will fix it at no charge. No charge for parts. No charge for labour. It doesn't matter where you purchased your vehicle, or whether it's new or used; the work is still covered by the repairing dealer\*.

This limited protection covers thousands of parts for vehicles in normal use. Items not covered include regular maintenance parts, belts, hoses, sheet metal and upholstery. See your Ford dealer\* for complete details.

\*At participating dealers only.

†For as long as you own your car or light truck. See your dealer for details.



Optional Ford Extended Service Plans cover major components on new Ford cars and light trucks for longer than the vehicle's basic warranty. The cost of this added protection is so moderate that it could pay for itself the first time you need it. Your Ford dealer has full details.

## Motorcraft

Genuine Ford and Motorcraft original equipment replacement parts meet the same high standards as those installed in production. They are your best assurance of quality and longterm satisfaction.



Ford Credit Canada, Limited is interested in helping to fill the transportation needs of every qualified buyer of a Ford product. A participating dealer can arrange financing terms or a Red Carpet Lease<sup>®</sup> tailored to your circumstances. Ford Credit Canada, Limited has offices conveniently located throughout Canada.

This brochure has been prepared only as a general guide to the customer and every effort has been made to ensure that all information is correct at the time of printing. However, some errors may have been included and some of the information or specifications may have changed since the time of printing. Your dealer will have full details of any changes and/or corrections and you should ask him to bring you up to date at the time of your purchase.

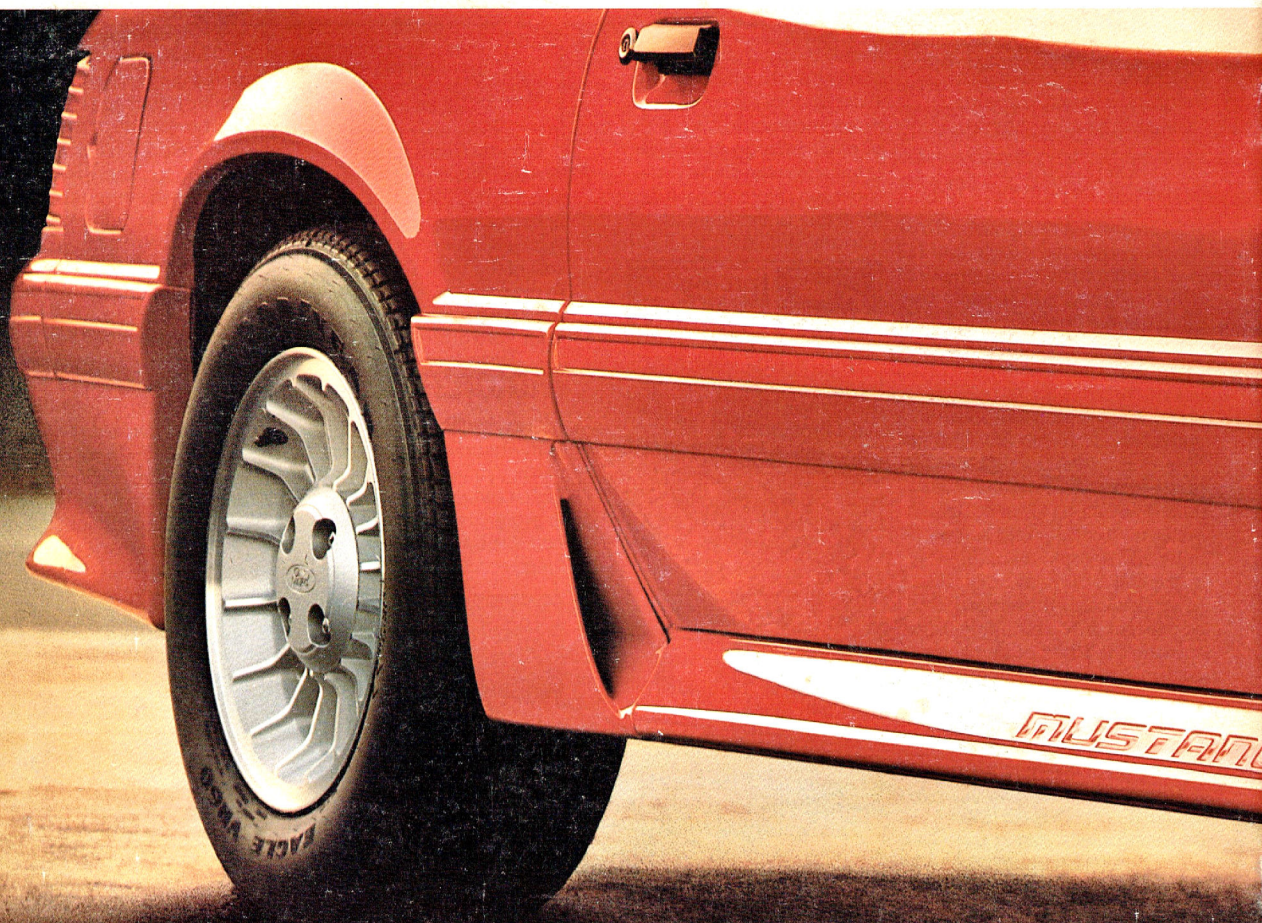
Ford Motor Company of Canada, Limited reserves the right to change prices, colours, materials specifications and models and to discontinue models without notice and without incurring obligations of any kind.

Buy or lease  
a new Mustang





Quality is Job 1.



FORD MUSTANG