

1991



GMCTRUCK
It's not just a truck anymore.®



V-JIMMY



SLE V-Jimmy interior with seats trimmed in Custom Cloth

Forge a trail to almost anywhere. With big V8 power and ground-gripping 4x4 traction, the full-size sport utility V-Jimmy lets you make tracks for the fun...in style and comfort. Inside, there's room enough to carry up to five persons (with available rear seat) plus loads of space for luggage and vacation gear. A finely-tuned 4x4 suspension system helps smooth the ride on the highway or on back-country by-ways. Rear wheel anti-lock brake system is standard (operates only in 2-WD).

SUBURBAN



SLE Suburban interior with available seating and Custom Cloth trim

The enduringly popular truck-size wagon. Carries up to nine persons (with available extra seating); hauls up to 167 cu ft of cargo; tows total loaded trailer weights of up to 9500 lb, depending on model and proper equipment. Choose from 4x2 or 4x4 versions. Power choices range up to a big 7.4 Liter gasoline V8 for 4x2 models. All Suburbans feature standard rear wheel anti-lock brakes (operate in 2-WD only on 4x4 models).

RALLY



Extended body Rally STX interior with available 15-passenger seating

Rally measures up to fit any lifestyle. Full-size Rally offers space, payload capacity and performance that make it ideal for family travel or business. Super-size 146-inch wheelbase models offer available seating for up to 15 passengers. Or choose a 110- or 125-inch wheelbase Rally with standard seating for five, or available arrangements for eight or 12, depending on the model and series. All are big on style with standard trim or the luxurious STX treatment. Rear wheel anti-lock brakes are standard.

GM

SONOMA



SLE Sonoma Regular Cab interior with available bucket seats and Special Custom Cloth seat upholstery

A big step up from ordinary compact pickups. Sporty Sonoma offers the most powerful V6 engine and one of the highest 4x2 model trailer-towing capacities in its class. Available in Regular Cab models with standard 3-across seating or Club Coupes that can be equipped to carry four persons. A spacious 6.1-ft cargo box or 7.4-ft cargo box (Regular Cabs only) lets you pile on plenty of freight. Standard features include the advanced Insta-Trac system on 4x4 models and rear wheel anti-lock brakes (operate in 2-WD only on 4x4 models).

SIERRA



SLE Sierra Regular Cab interior with Custom Cloth seat upholstery

Everything you want in a full-size pickup, and a whole lot more. Good looks. Tough build. Smooth ride. High-tech performance. Sierra delivers it all...plus a truckload of standard features for outstanding extra value. The lineup includes 1/2-, 3/4- or 1-ton Regular Cab or Club Coupe models in 4x2 or 4x4 versions. New Series 3500 Heavy-Duty Chassis-Cabs with GVWRs up to 15,000 lb offer the highest load capacity in the light-duty field. All models except the new Series 3500 Chassis-Cabs feature rear wheel anti-lock brakes (operate in 2-WD only on 4x4 models).

TRUCKS

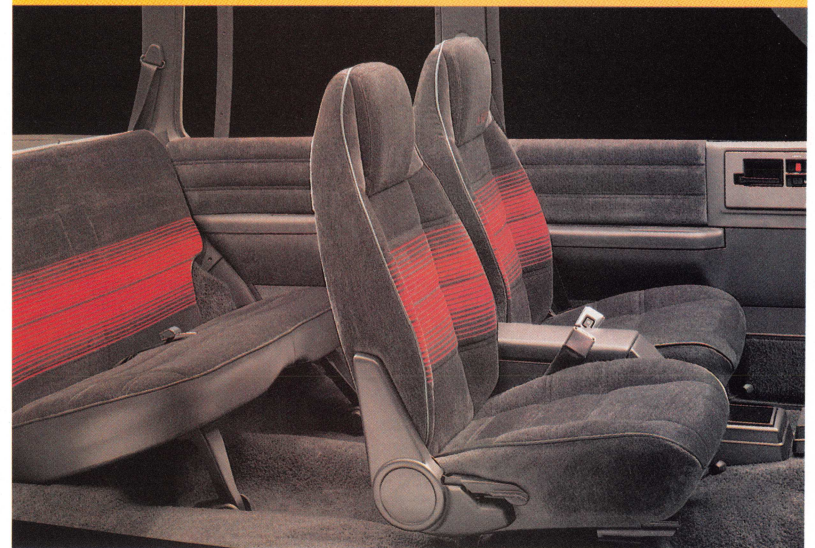
SAFARI



SLE Safari interior with Custom Cloth trim and available 8-person seating

The mid-size van with 4-season versatility: Safari offers extra traction in all kinds of weather with All Wheel Drive models in addition to rear wheel drive models...extra cargo space for luggage and vacation gear with XT extended body models as well as regular body models...added driving confidence on slick or dry roads with standard 4-wheel anti-lock brake system...more trailer-towing muscle than most vans in its class. Plus, it's big enough to carry up to eight persons, when equipped with available extra seats. Choose from standard SLX, mid-level SLE and top-level SLT models.

S-15 JIMMY



SLE S-15 Jimmy interior with Deluxe Cloth seat upholstery

The compact sport utility with full-size features. Choose from 4x2 or 4x4 models in 2-door or extra-size 4-door versions. Available seating capacity ranges from four to six persons, depending on the model. Other features include standard 4.3 Liter Vortec V6 (most powerful V6 in S-15 Jimmy's class), shift-on-the-fly Insta-Trac 4x4 system, 4-wheel anti-lock brakes on 4-door models and rear wheel anti-lock brakes on 2-door models (operate in 2-WD only on 4x4 models). A new SLS sport trim package is now available for 4-door models to supplement the top-level SLE comfort package introduced earlier in the model year.

GM

CARGO VANS



Safari Cargo Van (left) and Vandura (right) interiors shown with available front passenger seats

Take your pick of two proven cargo vans: Besides regular body rear wheel drive models, mid-size Safari offers the extra capacity of XT extended-body models with a whopping 200.1 cu ft maximum cargo volume. Full-size Vandura offers a super-size 146-inch wheelbase version with 306 cu ft of cargo space in addition to 110- and 125-inch wheelbase models. New available 7.4 Liter V8 power for G-3500 Series models is ideal for moving heavy loads. Also, ask your GMC Truck dealer about high-capacity G-3500 Series Magnavan and P-3500 Series Value Van cargo carrying models.

POWER

2.5 Liter Tech IV Gas. Extensive improvements make this advanced in-line 4-cylinder engine a better-than-ever performer for '91.

2.8 Liter V6 Gas. This popular V6 provides lively performance for personal transportation or tough commercial jobs.

4.3 Liter Vortec V6 Gas. One of the most advanced gasoline engines in the GMC Truck lineup, this high-compression V6 features Vortec swirl-port induction.

5.0 Liter V8 Gas. Swirl-port induction and fast-burn combustion chambers give this proven V8 high horsepower and torque ratings.

5.7 Liter V8 Gas. This big V8 with fast-burn combustion chambers offers impressive performance for work or play.

7.4 Liter V8 Gas. Ideal for pulling maximum loads, this high-torque V8 features improved reliability for '91.

GM 6.2 Liter V8 Diesel/Cummins 3.9 Liter L4 Diesel. These rugged engines combine heavy work capability with diesel operating advantages.

ENGINE AVAILABILITY BY MODEL

Type	ENGINES									
	Gasoline					Diesel				
Displacement	2.5L	2.8L	4.3L	5.0L	5.7L	7.4L	3.9L	6.2L		
Configuration	L4	V6	V6	V8	V8	V8	L4	V8		
Order Code	L38	LL2	LB4	LJ2 (1)	L03	L05	L19	LST	LH6	LL4
MODEL AVAILABILITY OF ENGINES										
Sonoma	S 4	A 4	A 5	—	—	—	—	—	—	—
S-15 Jimmy	—	—	S	—	—	—	—	—	—	—
Safari	—	—	S	A 4	—	—	—	—	—	—
Sierra Pickup (1500 Series)	—	—	S	—	A	A	—	—	S 6	—
Sierra Pickup (2500 Series) (2)	—	—	S	—	A	A	—	—	S 6	—
Sierra Pickup (2500 Series) (3)	—	—	S	—	—	A	—	—	—	S
Sierra Pickup (3500 Series) (7)	—	—	—	—	—	A	S	—	—	S
Sierra Chassis-Cab (2500 Series)	—	—	—	—	—	S	—	—	—	S
Sierra Chassis-Cab (3500 Series Club Coupe & 131.5" Wheelbase Regular Cab) (7)	—	—	—	—	—	A	S	—	—	S
Sierra Chassis-Cab (3500 Series 135.5"/159.5" Wheelbase Regular Cab) (7)	—	—	—	—	—	S	A	—	—	S
Sierra Chassis-Cab (H.D. 3500 Series) (7)	—	—	—	—	—	S	A	—	—	—
V-Jimmy	—	—	—	—	—	S	—	—	S 6	—
Suburban (1500 Series)	—	—	—	—	—	S	—	—	S 6	—
Suburban (2500 Series)	—	—	—	—	—	S	A 4	—	—	S
Bonus/Crew Cab Pickup	—	—	—	—	—	S	A	—	—	S
Bonus/Crew Cab Chassis-Cab	—	—	—	—	—	S	A	—	—	S
Vandura (1500 Series)	—	—	S	—	A	—	—	—	—	—
Vandura (2500 Series)	—	—	S	—	A	A 8	—	—	S 6	—
Vandura (3500 Series)	—	—	S 2.6	—	—	S 3	A 3	—	—	S 8
Rally (1500 Series) (6)	—	—	S	—	A	A 8	—	—	—	—
Rally (2500 Series)	—	—	S	—	A 6	A	—	—	S 6	—
Rally (3500 Series)	—	—	S 2	—	—	S 3	A	—	—	S 8
Magnavan/Vandura Special	—	—	—	—	—	S	A	—	—	S
Rally Camper Special	—	—	—	—	—	S	A	—	—	S
Value Van	—	—	S	—	—	A	A	—	—	S
P Chassis Only (Commercial)	—	—	S	—	—	A	A	—	—	S
P Chassis Only (Motor Home)	—	—	—	—	—	S	—	—	—	S 9

S - Standard
A - Available

1 - High-output version.
2 - Models under 8500-lb GVWR.
3 - Models over 8500-lb GVWR.
4 - 2-WD models only.

5 - Standard for 4-WD models.
6 - Not available in California.
7 - Dual rear wheels standard.
8 - 125-in wheelbase model(s) only.

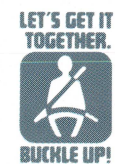
9 - 137- and 158.5-in wheelbase models only.

TRUCKS

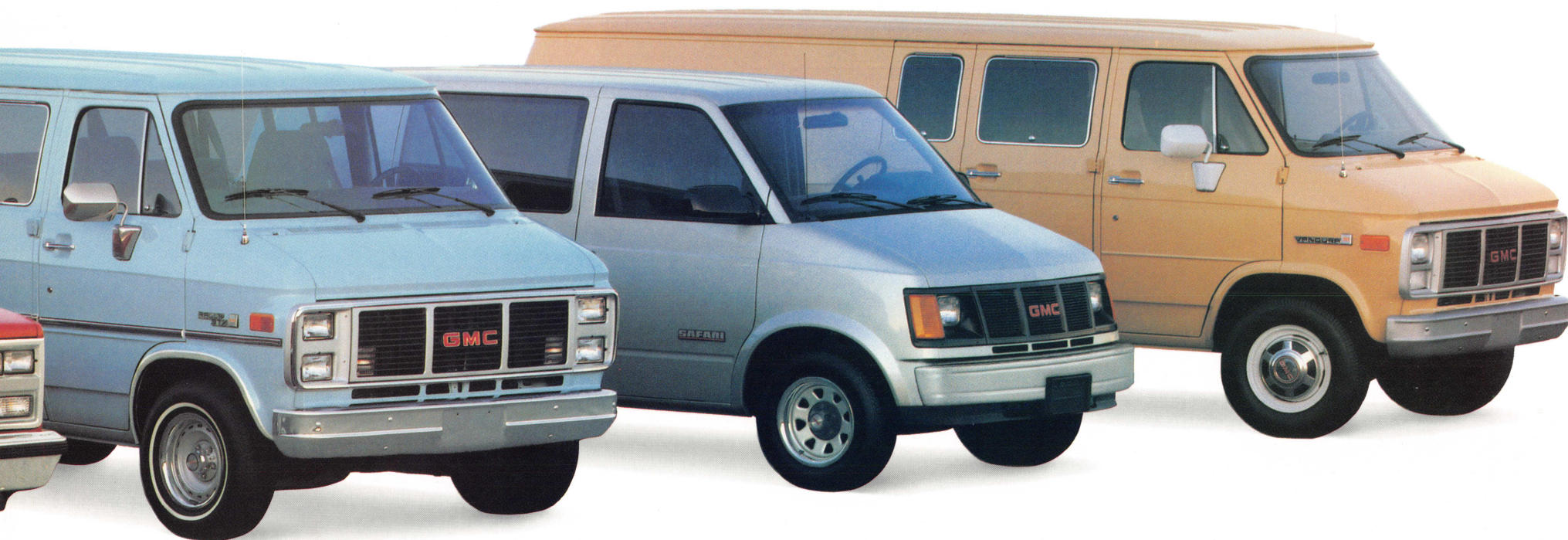


GMC
TRUCK

4796-91
Litho in USA



1991



The GM 3-year/50,000-mile **BUMPER TO BUMPER PLUS WARRANTY** covers repairs for any new GMC Truck model, including labor and parts, to correct any defects in material or workmanship occurring during the warranty period. The complete vehicle (except tires, which are covered by their manufacturer) will be covered for 3 years or 50,000 miles, whichever

comes first. After the first year or 12,000 miles, there is a \$100 deductible per repair visit. Body sheet metal rust-through from corrosion is covered for 6 years or 100,000 miles, whichever comes first. There is no deductible for rust-through repairs. See your GMC Truck dealer for terms of this limited warranty.

IMPORTANT: A WORD ABOUT THIS PUBLICATION. We have tried to make this publication as comprehensive and factual as possible. We reserve the right, however, to make

changes at any time, without notice, in prices, colors, materials, equipment, specifications, models and availability. Also, tires shown in illustrations are supplied by various manufacturers. Since some information may have been updated since the time of printing, please check with your GMC Truck dealer for complete details.

A WORD ABOUT ENGINES. GMC Truck models are equipped with engines produced by the GM Engine Division, its subsidiaries or suppliers to GM worldwide.

A WORD ABOUT OFF-ROAD DRIVING. If you purchase a GMC Truck 4x4 model, ask your dealer for a copy of "Off-Road Driving With Your GMC Truck 4x4." This brochure is filled with helpful tips and facts about off-road driving. If your dealer doesn't have this brochure, please call 1-800-TRY GMC 1.

GM®, Jimmy®, Vandura®, Vortec®, Suburban®, Value Van® and Insta-Trac® are registered trademarks of General Motors Corporation. GMC Truck™, Safari™ and Sonoma™ are trademarks of General Motors Corporation.
© 1990 General Motors Corporation. All Rights Reserved.