

Toyota Collection



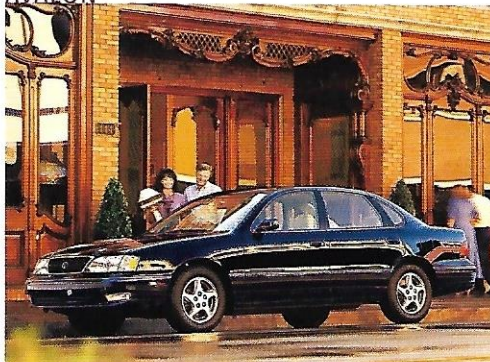
Car, truck, van or sport utility vehicle, Toyota has something for everyone. And they all have one thing in common – the quality and reliability you'd expect from a Toyota...mile after satisfying mile.

SIENNA



With the all-new Sienna, getting the whole family together will be a lot easier.

AVALON



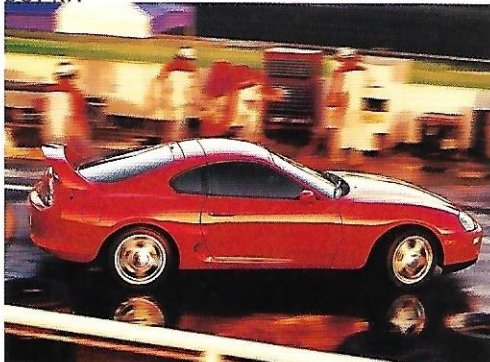
Our flagship sedan provides the comfort, elegance and the tranquility you would expect from our most luxurious sedan.

TERCEL



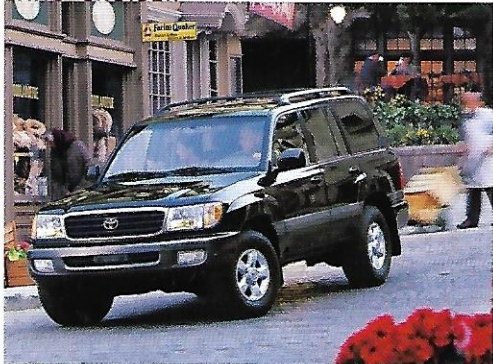
With so many standard features, Tercel is an outstanding value.

SUPRA



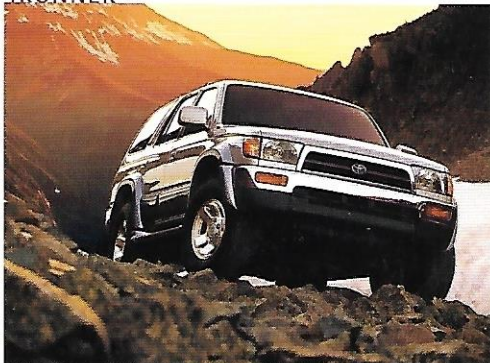
The uncompromised expression of power, technology and style.

LAND CRUISER



Think of it as the international symbol for SUV.

4RUNNER



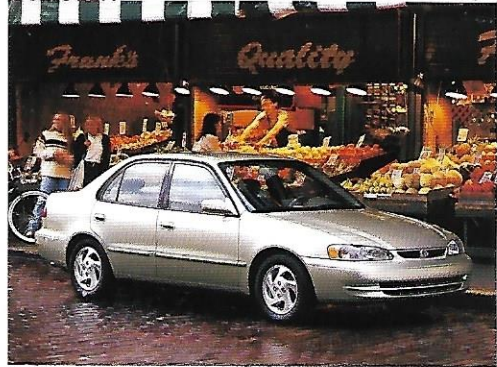
4Runner answers the call of the wild.

CAMRY



Knowing that you've chosen the best brings confidence with every mile.

COROLLA



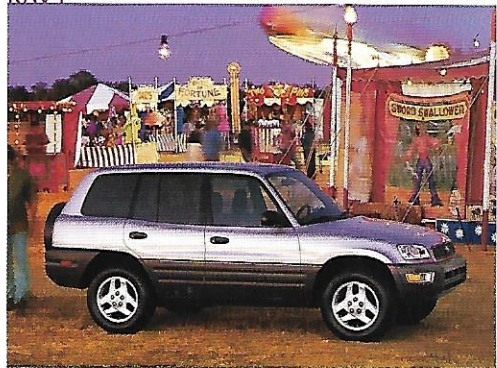
The all-new Corolla...change makes all the difference.

CELICA



Sporty styling and performance to match. Everything about the Celica shouts "fun."

RAV4



RAV4 can make every day seem like Saturday.

T100



With the capabilities of a full-size truck and the reliability of a Toyota.

TACOMA



Work or play, Tacoma will get you there.



In our lives, there are a few special things that we can **really count on** ...to help us accomplish all that we need to do. Things we often take for granted because they are so reliable. However, such dependability doesn't come easy. For decades, the people at Toyota have dedicated themselves to pro-

TOYOTA | everyday

viding you with vehicles of the highest quality and reliability while adapting their products to your ever changing needs. And their perseverance has paid off. Because Toyota is now one of the **most trusted names** in the automotive world — one of the few things you can really depend on. To go where you need to go and do the things you need to do...every day.

6
SIENNA

11
AVALON

12
CAMRY

15
COROLLA

16
TERCEL

19
SUPRA

20
CELICA

23
RAV4

24
LAND CRUISER

27
4RUNNER

28
T100

31
TACOMA

32
SPECIFICATIONS



In 1957, Toyota exported its first cars to America. And over the next 40 years, the people at Toyota worked hard improving their products. Today, **our commitment** is stronger than ever — not only to the production of outstanding products but to you, the consumer.

Automotive safety and the **environment** are major concerns so we're producing more

When you buy a Toyota, you can expect a lot more
than a great vehicle.

innovative technology and cleaner burning, more energy-efficient vehicles. We're reducing the pollutants of our manufacturing processes and we're working toward making our vehicles recyclable. To help you make more informed choices, we developed a Web site

(www.toyota.com) with interactive views of each model, inside and out, tips on financing

and purchasing your Toyota and dealer locations with easy-to-follow maps. There's a

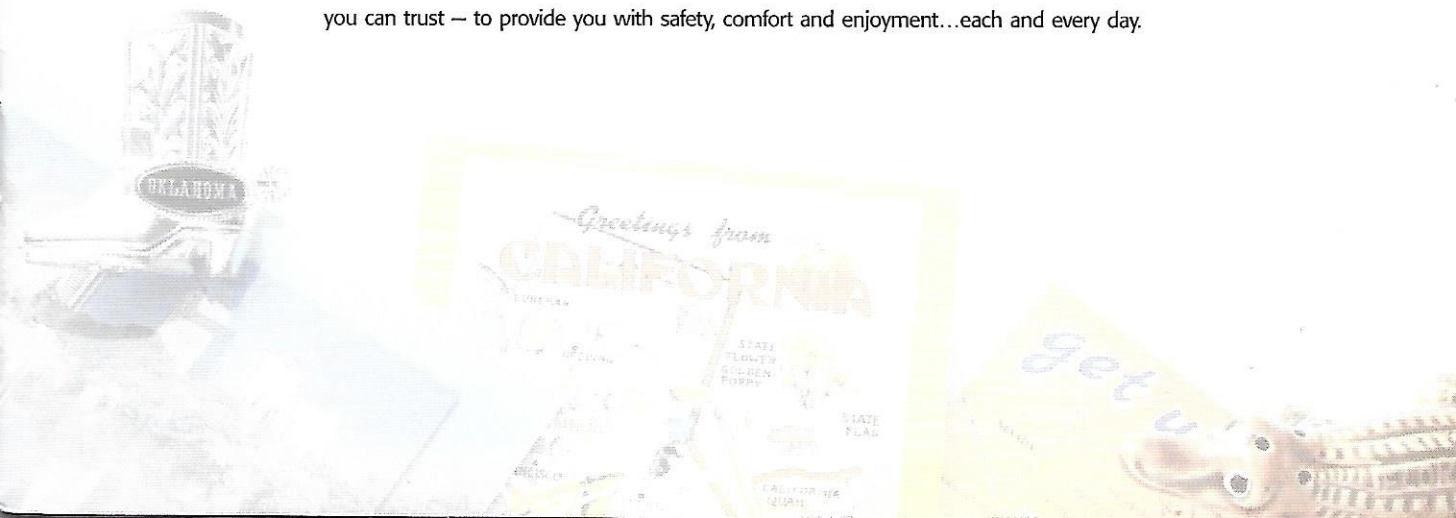
Toyota owners' club, and, for automotive enthusiasts, an entertaining area devoted to car

culture with everything from games and quizzes to family trips and travel tips. And, if

you'd like to share your thoughts and opinions, call our Customer Assistance Center at

1-800-331-4331. So come experience a Toyota and you'll discover that there's still something

you can trust — to provide you with safety, comfort and enjoyment...each and every day.





Sienna XLE shown in Sable Pearl with optional Leather Trim Package.



SIENNA

SABLE PEARL

SUPER WHITE

SUNFIRE RED PEARL

NAPA BURGUNDY PEARL

FROSTED IRIS METALLIC**

DENIM BLUE MICA

CLASSIC GREEN PEARL

SILVER SPRUCE METALLIC

BLACK

*Sienna is built with pride in Georgetown, Kentucky, and many of its parts are manufactured in the U.S.

**Not available on Sienna XLE.

If you're a parent, nothing is more important than your kids...or grandkids. They're growing fast and you're deeply involved in their busy lives. You need a minivan. Introducing the all-new, affordable Sienna.* Built for your peace of mind, it includes a

Introducing the all-new Sienna. Helping you be a better parent one mile at a time.

responsive 194-hp V6, ABS brakes, air bags and a reinforced body designed to disperse the energy of an impact...all standard. Thanks to the versatility of its foldable and removable seats, Sienna comfortably accommodates from two to seven passengers, and most everything in between.

Inside are dual air bags,† a child-protector sliding-door lock, a multi-adjustable driver's seat, two 12-volt power outlets and a 3.0-liter, DOHC, V6 engine.

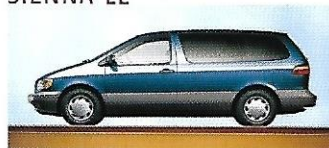
Add to the CE standard features power door locks, outside mirrors, rear quarter windows and front door windows. Plus cruise control and dual air conditioning.

To all the features found on the CE and LE add power front seats, Captain's Chairs, dual illuminated visor vanity mirrors, an anti-theft remote keyless entry system and a driver's side sliding door.

SIENNA CE



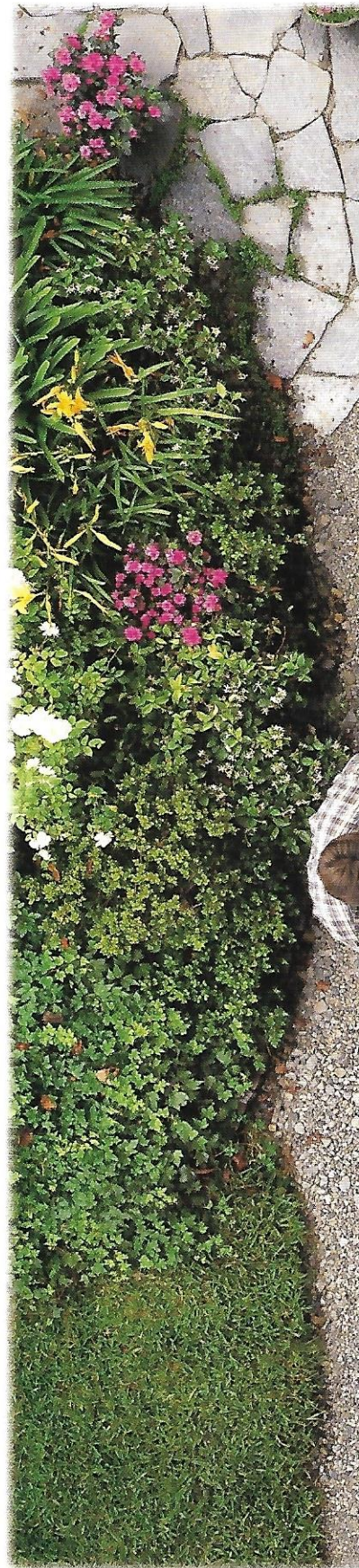
SIENNA LE



SIENNA XLE



†Driver and front passenger air bags are a Supplemental Restraint System (SRS) designed to inflate in a severe frontal collision. In all other accidents, seatbelts offer primary protection, and the air bags will not inflate. Do not sit or place objects close to an air bag. To minimize the risk of severe injury or death in all types of crashes, seatbelts must be worn at all times by all vehicle occupants. Do not use rearward-facing child seat in any front passenger seat. The force of a deploying air bag SRS may cause serious injury. For more information on air bags and instructions on child seat usage, see the Owner's Manual.

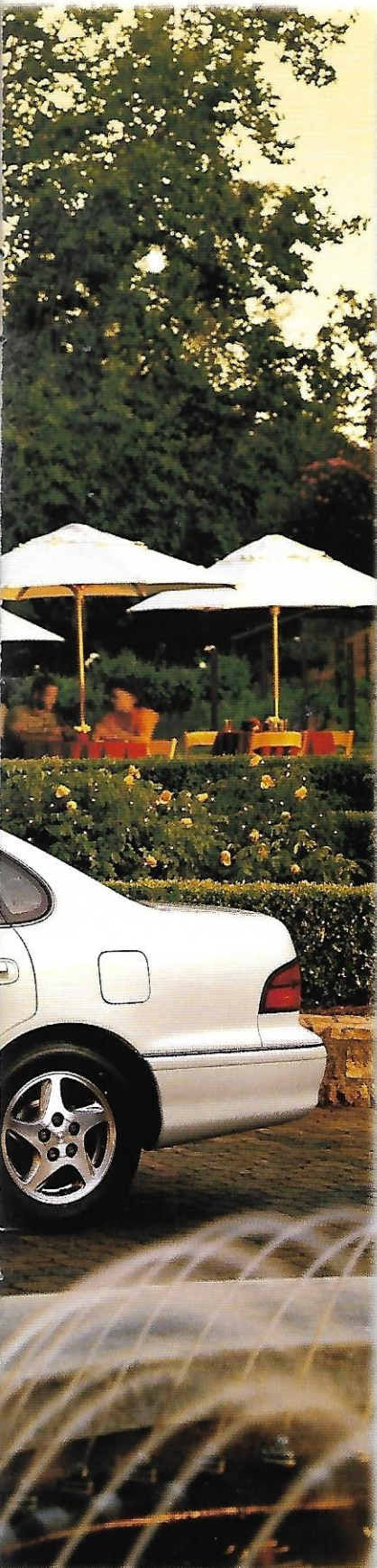




Sienna XLE shown in Black with optional Leather Trim Package.



Avalon XLS shown in Diamond White Pearl with optional moonroof.



AVALON

Avalon, Toyota's flagship, has been restyled for 1998 with a resculpted body, new multi-reflector headlamps and a wider trunk opening (by 9.4 inches). For safety, there's a side-impact air bag mounted in both front seats.* However, some things Avalon's new styling redefines elegance, while retaining its celebrated tranquility.

are just too good to change so we haven't disturbed the celebrated serenity of its quiet, comfortable six-passenger interior,** its luxurious ride, the agility of its sporty handling or the responsive power of its 200-hp V6 engine.† With such strong attributes, it's no wonder Avalon is our most accomplished sedan.

Standard in our flagship is CFC-free air conditioning, cruise control, power windows, locks and outside mirrors, dual front air bags and side-impact air bags.*

Take features of the XL and add aluminum alloy wheels, CFC-free air conditioning with automatic climate control, heated mirrors and auto on/off headlamps.

AVALON XL



AVALON XLS



DIAMOND WHITE PEARL

VINTAGE ROSE METALLIC

BLACK

NAPA BURGUNDY PEARL

SABLE PEARL

SILVER SPRUCE METALLIC

CLASSIC GREEN PEARL

BLUE VELVET PEARL

GOLDEN SAND METALLIC

*For information about driver, front passenger and side-impact air bags, see footnote on page 15.

**Five passengers with bucket seats.

†198 hp when equipped with California emissions.

C A M R Y

CASHMERE BEIGE METALLIC

SUPER WHITE

SUNFIRE RED PEARL

RUBY PEARL

FROSTED IRIS METALLIC

BLUE DUSK PEARL

BLUE VELVET PEARL

ANTIQUE SAGE PEARL

CLASSIC GREEN PEARL

BLACK

For 1998, Camry continues to set "the gold standard" for performance, safety, comfort and quality in a family sedan. V6 or 4-cylinder, engine torque comes on at a low rpm for impressive throttle response. A long list of standard safety equipment "Still the best car built in the United States..." – *Automobile Magazine** includes front shoulder belt pretensioners and ABS** brakes. Options include front seat-mounted, side-impact air bags and Traction Control (TRAC) which helps reduce wheelspin when accelerating on slippery surfaces. You'll also enjoy its quiet, roomy interior and, naturally, all the quality of a Toyota.

CAMRY CE



Standard for your safety, comfort and convenience are dual front air bags,[†] dual remote-controlled outside mirrors and intermittent windshield wipers.

CAMRY LE



The LE raises the level of comfort with power-operated outside mirrors, door locks and windows, air conditioning, cruise control and Anti-lock Brakes.

CAMRY XLE

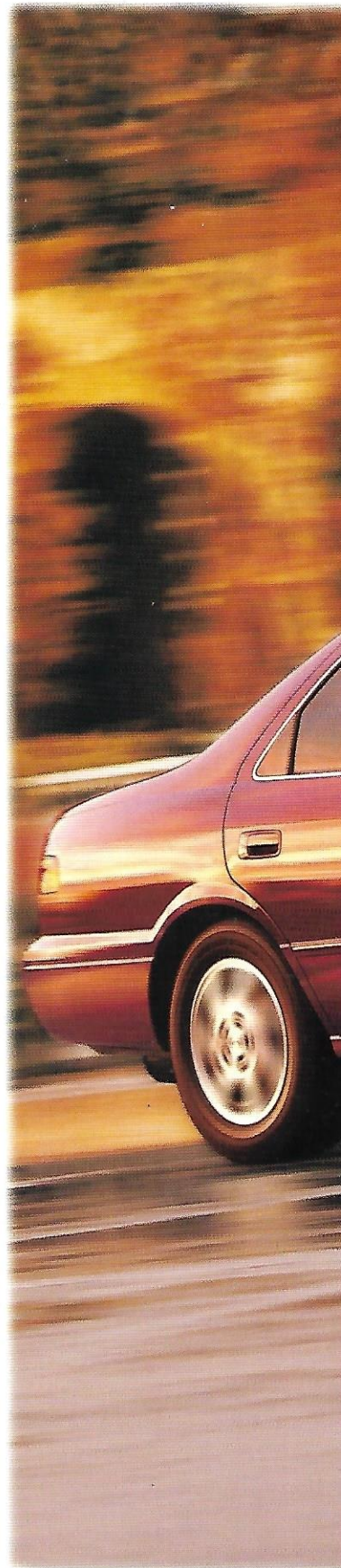


Standard are an anti-theft system with remote keyless entry, aluminum alloy wheels, dual heated outside power mirrors and multi-adjustable power front seats.

*February 1997. Most Camrys are built in Georgetown, Kentucky, with many of their parts manufactured in the U.S.

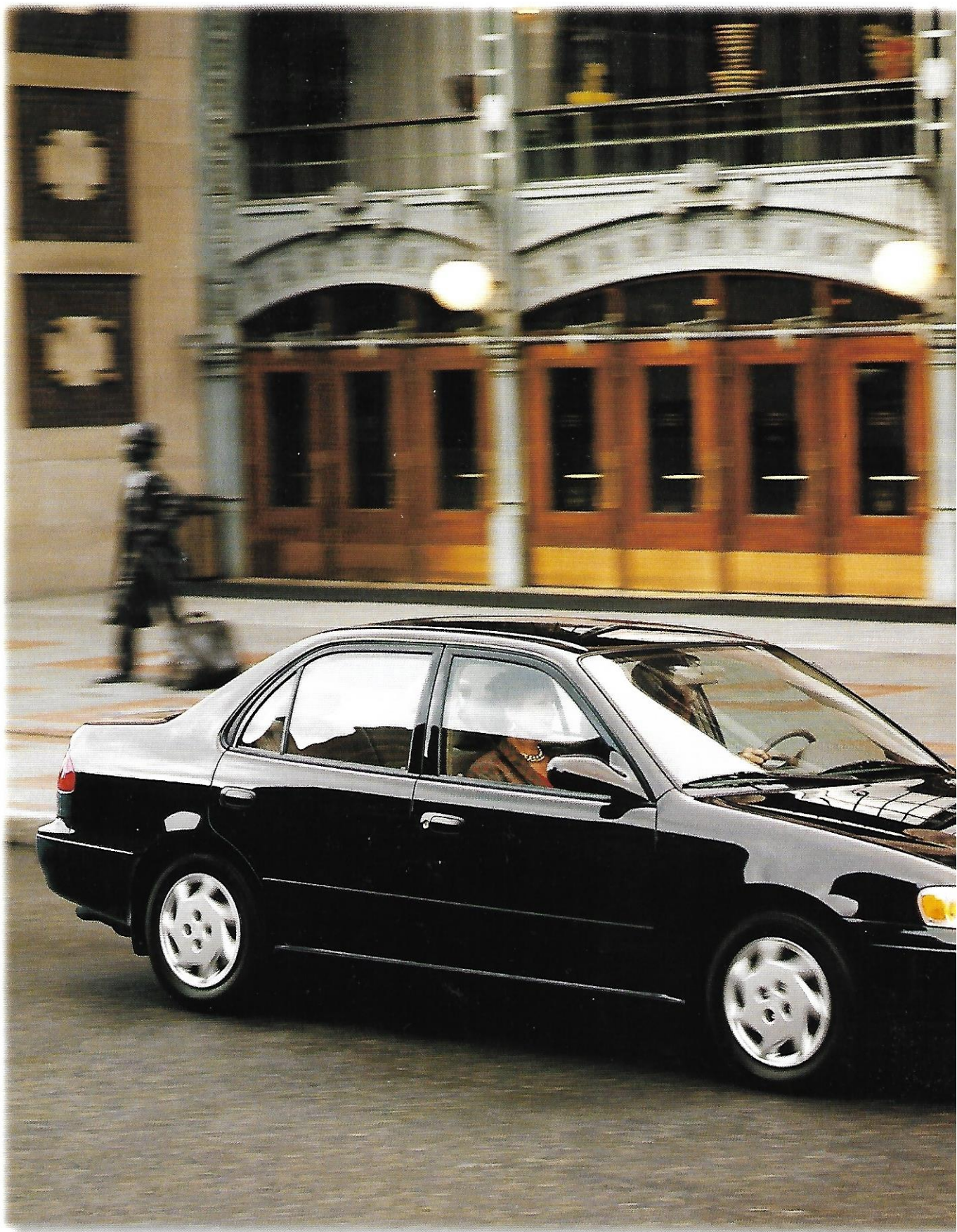
**ABS optional on CE 4-cylinder models, standard on all other models.

[†]For information about driver, front passenger and side-impact air bags, see footnote on page 15.





Camry XLE V6 shown in Ruby Pearl with optional moonroof.



Corolla LE shown in Satin Black Metallic with optional Touring Package.

COROLLA

Thirty years ago, the first Corolla rolled off our assembly line and into the hearts of American drivers. Today, it's one of the most trusted names in automotive history. For 1998, an all-new Corolla boasts a smooth, quiet ride and a new, all-aluminum, 120-hp engine. It's more powerful and designed for easy maintenance. And thanks to a rigid body, new daytime running lights, shoulder belt pretensioners, optional ABS brakes and new optional side-impact air bags, it's designed to help protect you and your family. Introducing the all-new, value-packed Corolla.

120-hp engine. It's more powerful and designed for easy maintenance. And thanks to a rigid body, new daytime running lights, shoulder belt pretensioners, optional ABS brakes and new optional side-impact air bags, it's designed to help protect you and your family. Introducing the all-new, value-packed Corolla.

COROLLA VE



Standard features include a new, all-aluminum, 1.8-liter engine, driver and front passenger air bags,* daytime running lights, power steering and power-assisted brakes.

COROLLA CE



To the VE, add a tilt steering wheel, a center console with special sunglasses holder, 60/40 split fold-down rear seats and air conditioning.

COROLLA LE



Add to the safety and convenience features on the VE and CE models: A front stabilizer bar, wider, 185-series tires and power windows and door locks.

*Dual front air bags and front seat-mounted, side-impact air bags are Supplemental Restraint Systems (SRS). The driver and front passenger air bags are designed to inflate in a severe frontal collision. The side-impact air bags are designed to inflate in severe side-impact collisions. In all other accidents, the air bags will not inflate. To decrease the risk of injury from a deploying air bag, always wear seat belts, sit upright in the middle of the seat and do not lean against the door. Do not put objects in front of an air bag or around the seat-back. Do not use rearward-facing child seats in any front passenger seat. The force of a deploying air bag SRS may cause serious injury. Please see your Owner's Manual for further instructions.

SANDRIFT METALLIC

SUPER WHITE

LIGHT COPPER MICA

RUBY PEARL

Misty Plum Metallic

BRILLIANT BLUE PEARL

BRIGHT IVY PEARL

MYSTIC TEAL MICA

SATIN BLACK METALLIC

TERCEL

SUPER WHITE

SUPER RED

SATIN BLACK METALLIC

SIERRA GREEN METALLIC

VISTA BLUE MICA

*For information about driver and front passenger air bags, see footnote on page 8.

**Together, they restrain the user during initial impact; then, by limiting the belt's tension, they cushion the shock to the torso.

[†]31/39 mpg city/highway with 5-speed manual transmission, 29/33 mpg city/highway with 3-speed automatic transmission. See your Toyota dealer for details.

In the Tercel, you can expect a lot for your money. Like a quiet, roomy interior, a responsive 16-valve, 4-cylinder engine, power-assisted brakes, front and rear crumple zones, sturdy side-impact door beams and dual air bags.* For '98, we've

Tercel's performance and practicality make this Toyota an outstanding value.

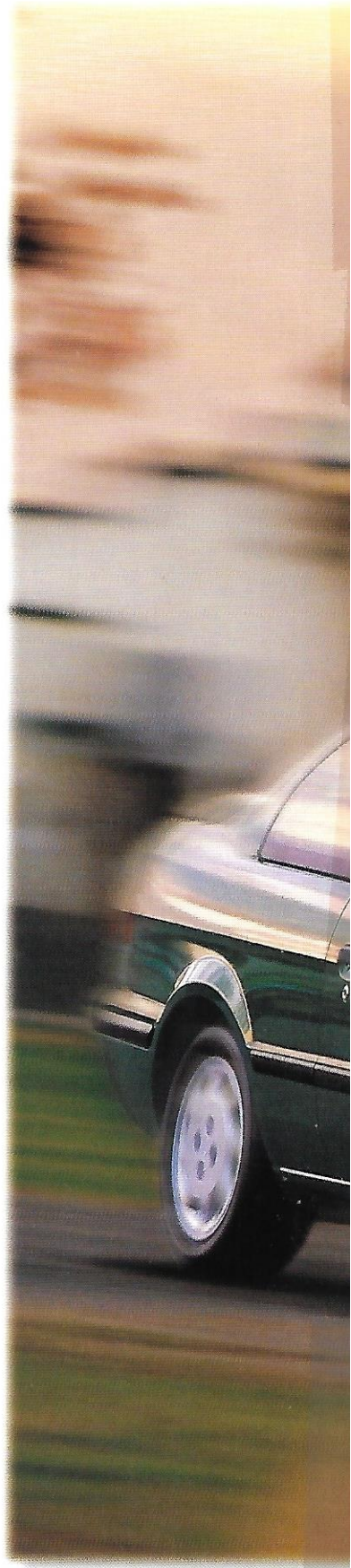
added front seatbelt pretensioners with force limiters** (the only car in its class to have them) and rear-seat headrests.

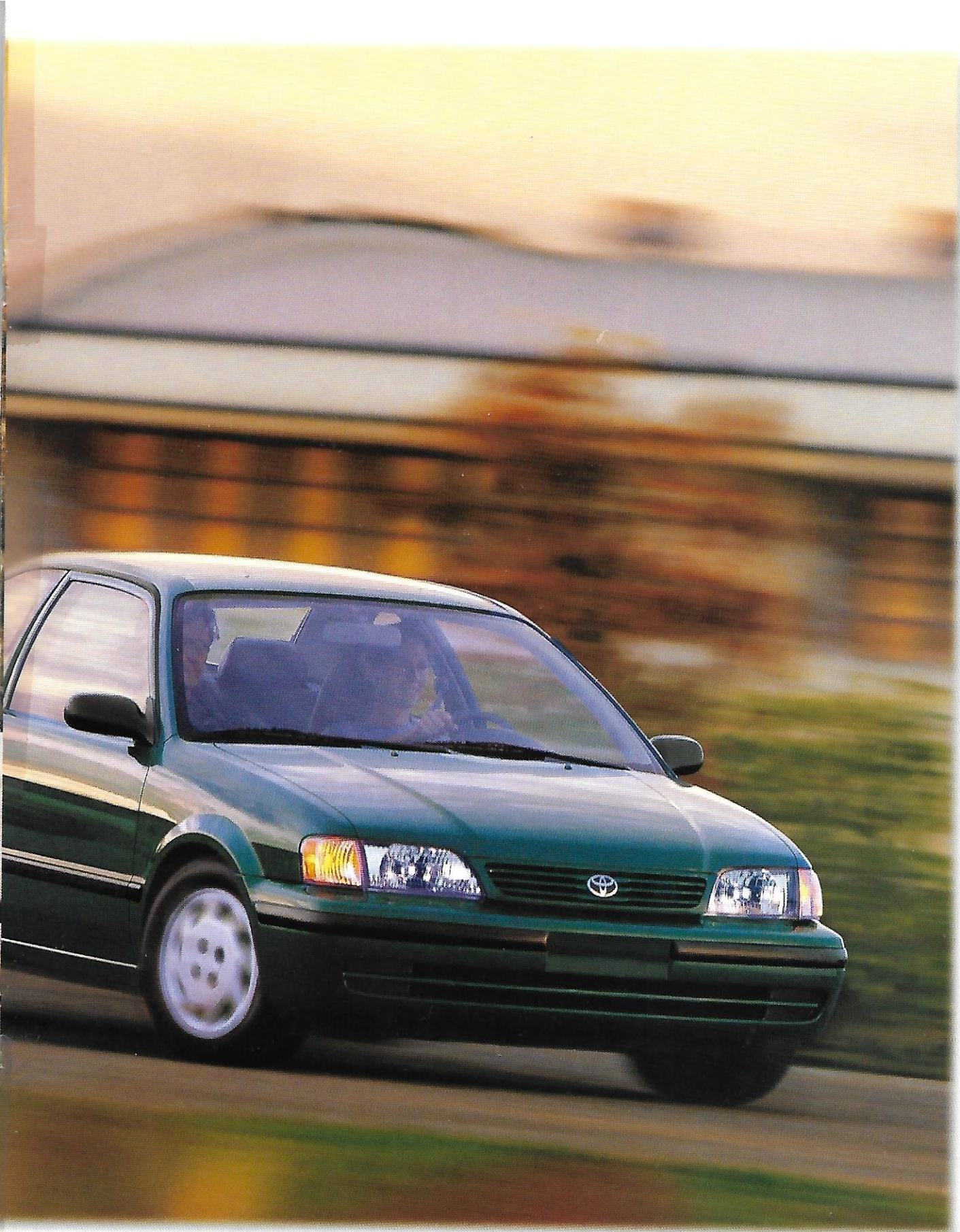
For straighter, skid-resistant stops, the Tercel is also available with an optional Anti-lock Brake System (ABS). Tercel — making the most of your money.

TERCEL

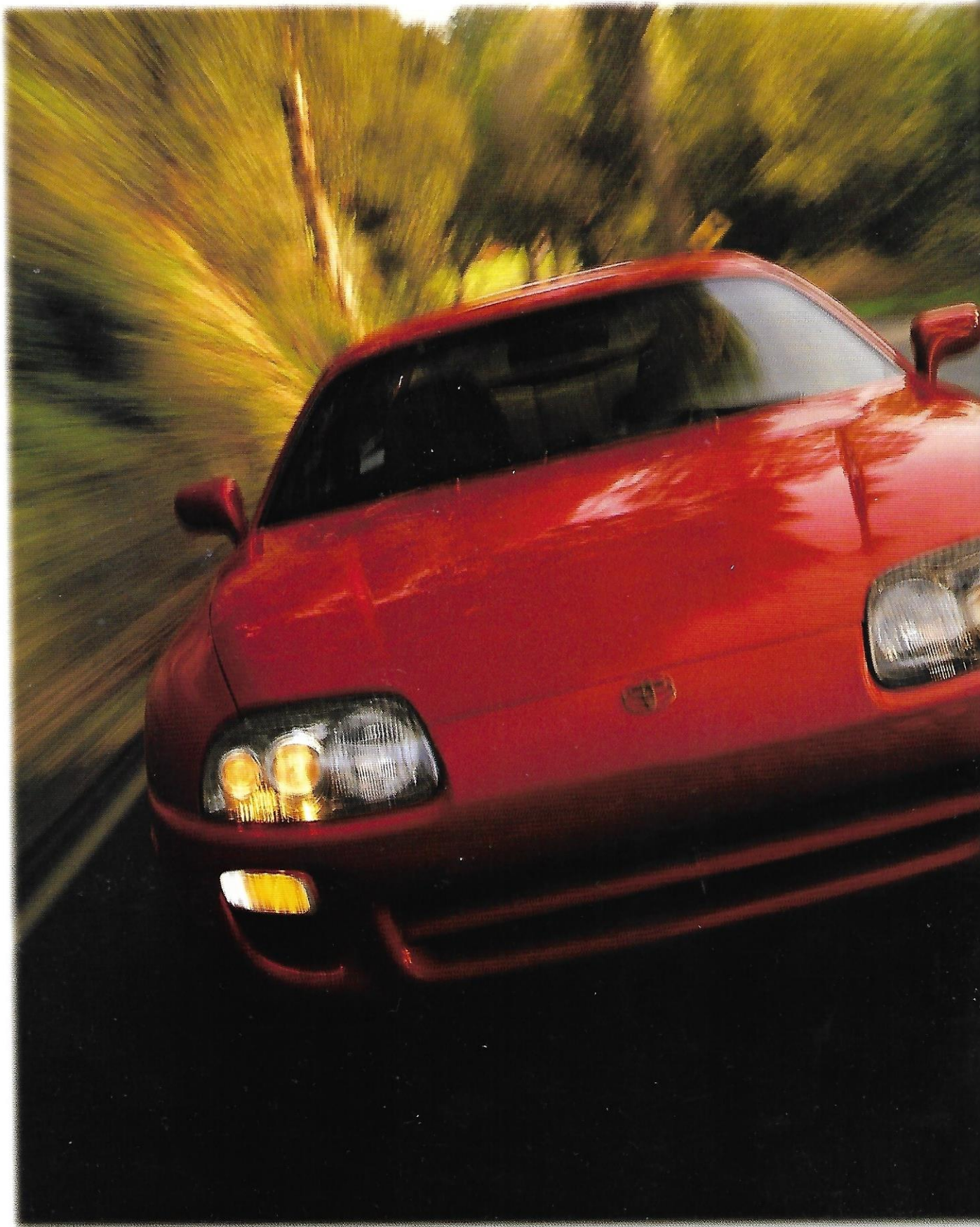


For great value, Tercel has few peers. Standard features include a thrifty[†] 93-hp engine, power-assisted brakes, rack-and-pinion steering and 14" wheels. Inside, you'll find tinted glass, fabric-faced seats, dual cup holders, carpeting and dual air bags.*





Tercel shown in Sierra Green Metallic.



Supra Turbo shown in Renaissance Red with optional Sport Roof.



S U P R A

Until man perfects the science of teleporting, there'll be Supra to take you to another dimension. Get into the cockpit and you're presented with all that's needed to connect you with one of the most sophisticated sports cars available. Through "A pure sports car, the Supra accelerates, brakes and corners with the best of them, oftentimes better than the best of them."*

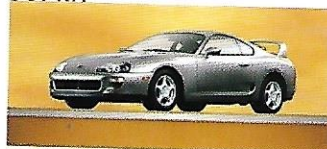
its torso-hugging sport seats you can feel Supra's double-wishbone suspension clinging to every corner...like sneakers on hot asphalt. Whether normally aspirated or turbocharged,** Supra has the power to not only blur the scenery, but to also blur your sense of time and space.

Few cars compare to the Supra: Double-wishbone suspension, rack-and-pinion steering, huge 4-wheel disc brakes with ABS, dual air bags† and 225 hp.

Add the exhilaration of open-air motoring for purebred excitement.

Twin sequential turbochargers, 320 intercooled horsepower. It's the epitome of power, a paragon of precision and the result of years of motorsports experience.

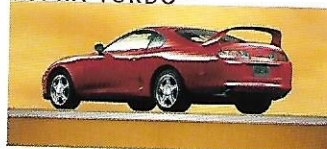
SUPRA



SUPRA SPORT ROOF



SUPRA TURBO**



QUICKSILVER FX

SUPER WHITE

RENAISSANCE RED

ROYAL SAPPHIRE PEARL

IMPERIAL JADE MICA

BLACK

*Road & Track 1996
Buyer's Guide.

**Supra Turbo not available in states requiring California emissions.

†For information about driver and front passenger air bags, see footnote on page 8.

CELICA

Having fun is important to you. So you'd like a car that's up to the challenge...like the sleek Celica Coupe or maybe the spacious Liftback. Then again, nothing enhances your zest for life like the Celica Convertible. From the moment you see its **Passionate about life? Meet your match.**

sculpted body, the instant you power down its thick cloth top, the second you unleash its responsive 130-hp, twin-cam engine, you'll know that the Celica Convertible is your kind of car. It's everything you want from a convertible. And more of what you expect from a Toyota. Celica, for the pure fun of driving.

ALPINE SILVER METALLIC**

SUPER WHITE

RENAISSANCE RED

GALAXY BLUE METALLIC**

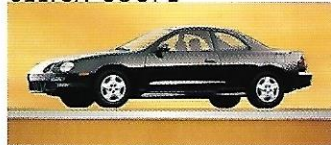
CARIBBEAN GREEN METALLIC**

BLACK

*For information about driver and front passenger air bags, see footnote on page 8.

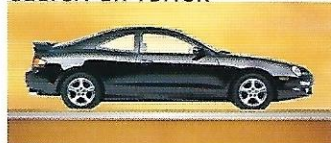
**Not available on Convertible.

CELICA COUPE



The Celica Coupe comes with many standard features including air conditioning, wide tires, tilt steering wheel, front air bags,* power windows/door locks and a 4-speaker Deluxe ETR/Cassette.

CELICA LIFTBACK



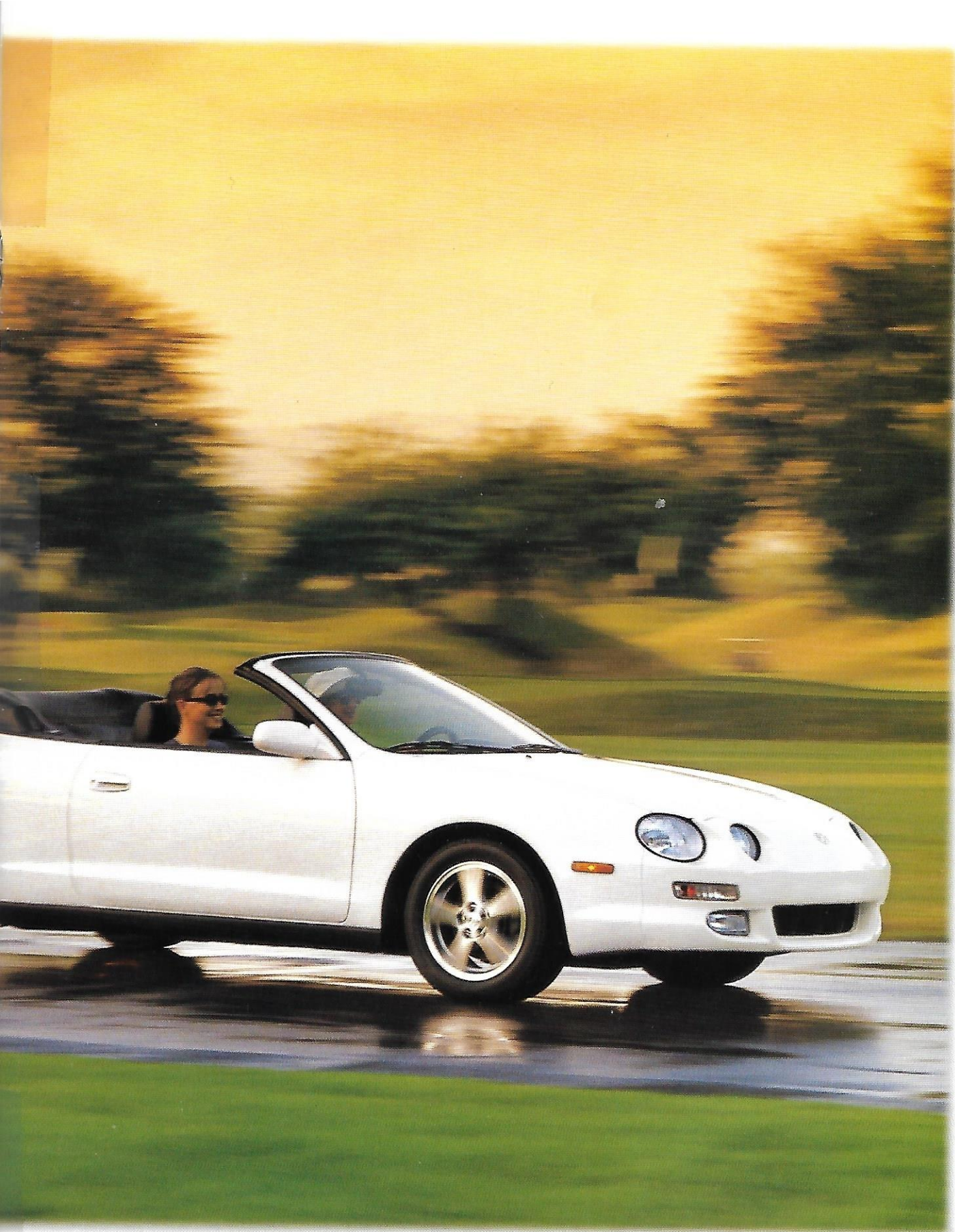
To the above list, the Liftback adds a rear spoiler, an intermittent rear window wiper, cruise control, a cargo area cover and a 4-speaker Deluxe ETR/CD with power antenna.

CELICA CONVERTIBLE

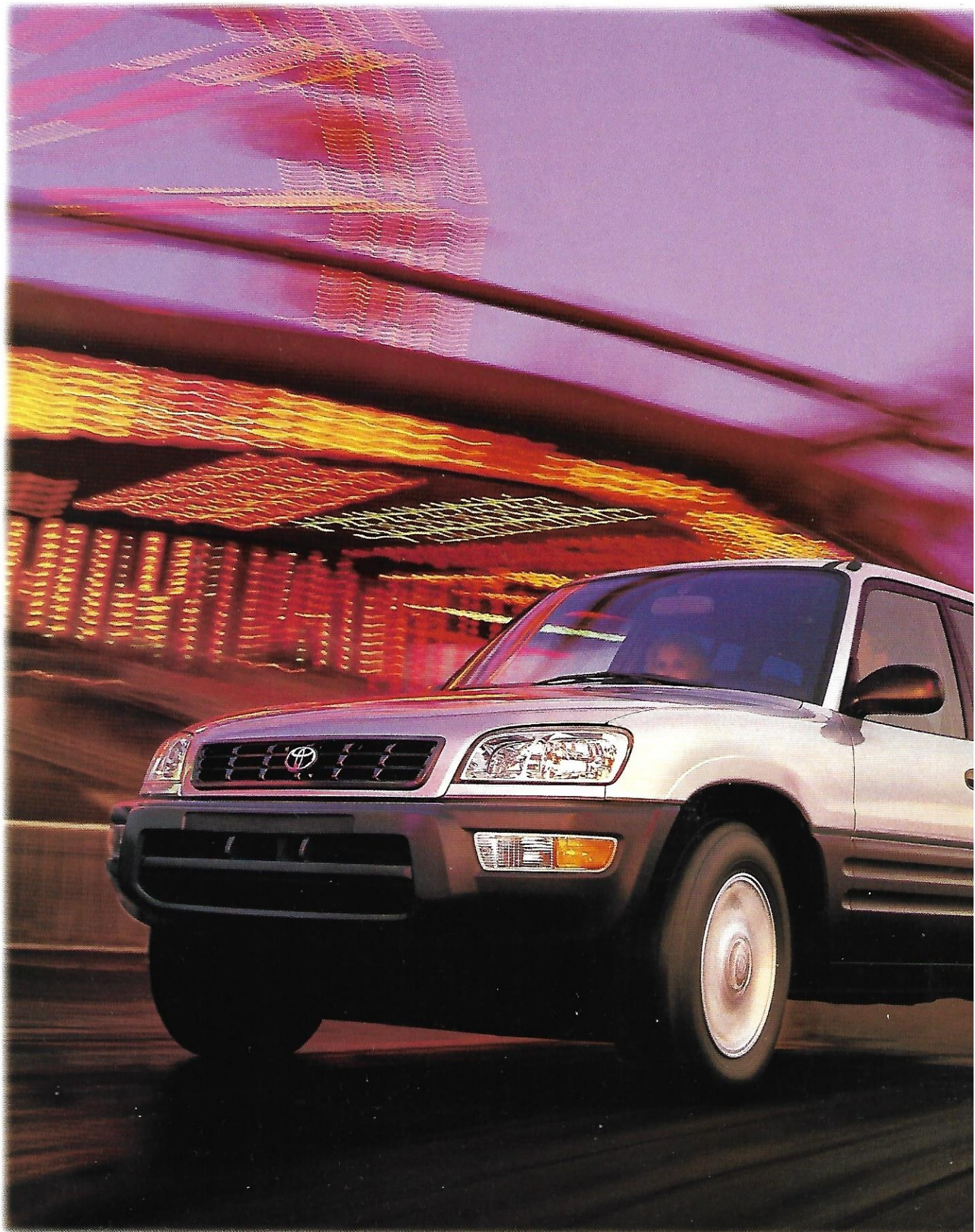


The Convertible includes all of the above plus a cloth power top with a glass rear window and an electric defogger (no rear wiper), aluminum alloy wheels and an 8-speaker Premium 3-in-1 ETR/Cassette/CD.





Celica Convertible shown in Super White.



RAV4 4-Door shown in Alpine Silver with optional alloy wheels.

RAV 4

Small car maneuverability, comfortable ride, sporty curves and sport utility ruggedness. In RAV4 we've created a vehicle to meet the ever changing needs of your lifestyle. And complementing its great looks, you'll find impressive engineering. With

*As Car and Driver said, "It's an automotive win-win if ever I saw one."**

a strong 2.0-liter, 16-valve engine to motivate you, front-wheel or full-time 4-wheel drive to grab you and wide 16" tires, RAV4 can take you to the corner store or to the corners of the earth. And don't forget the RAV4L. It includes a long list of luxuries... at a bargain price. RAV4L — it's one L of a deal.

RAV4 also comes with many safety and convenience features such as dual air bags,** side-impact door beams, power-assisted steering and brakes, a tilt steering wheel and intermittent wipers.

RAV4 4-DOOR



SEDONA SUNSET METALLIC†

NATURAL WHITE

RADIANT RED† (2-DOOR ONLY)

PRUSSIAN RED PEARL†
(4-DOOR ONLY)

BLACK

ALPINE SILVER METALLIC†

ROYAL SAPPHIRE PEARL†

DEEP JEWEL GREEN PEARL

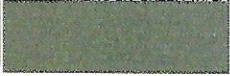
*Car and Driver, April 1996.

**For information about driver and front passenger air bags, see footnote on page 8.

†Not available on the RAV4L.

LAND CRUISER

RIVEROCK GREEN MICA



NATURAL WHITE



CHAMPAGNE PEARL



BLACK



MAHOGANY PEARL



DESERT BRONZE METALLIC



IMPERIAL JADE MICA



ATLANTIS BLUE MICA



*For information about driver and front passenger air bags, see footnote on page 8.

For more than 40 years Land Cruiser has proven itself in some of the world's most inhospitable terrain to become Toyota's ambassador of reliability. For 1998, it's all new and even better. With a powerful 32-valve V8 and a fully independent front

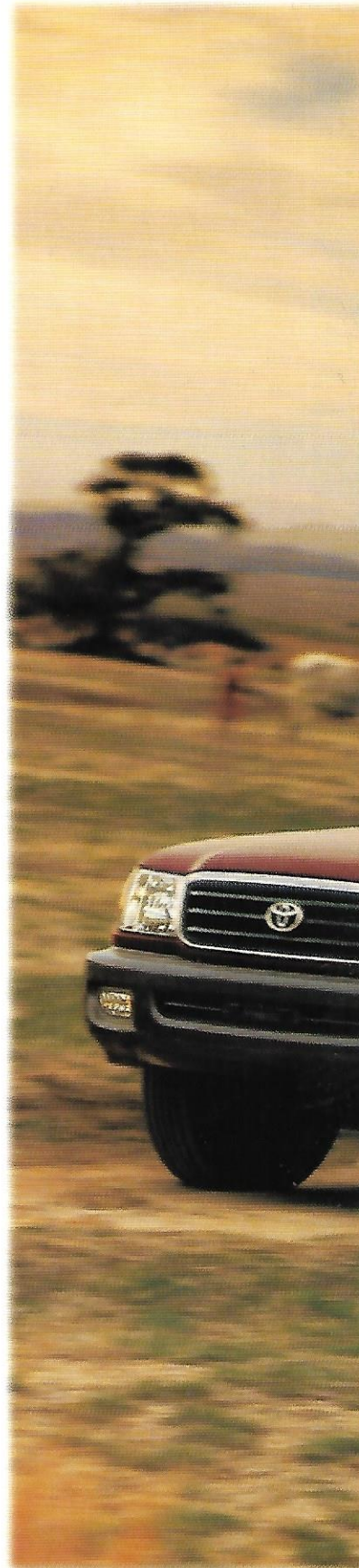
The all new Land Cruiser —
nothing else comes close.

suspension, its ride is smoother and more comfortable. And, being a Land Cruiser, it can go just about anywhere, while pampering its occupants with luxury, roominess and the security of a strong, body-on-frame structure, 4-wheel ABS and dual air bags.* Land Cruiser — the legend lives on.

LAND CRUISER



Standard features include tall tires on 16" wheels, power windows and door locks, automatic A/C and a 7-speaker sound system. In addition, you'll find a cup holder for each seat, a convenient overhead console, an outside temperature gauge, heated front seats and to accommodate your cell phone, laptop, GPS, etc., there are three auxiliary power outlets.





Land Cruiser shown in Mahogany Pearl.



4Runner Limited shown in Desert Dune Pearl.

4 R U N N E R

As the sibling of Land Cruiser, 4Runner inherited its big brother's good looks and tenacious "go-anywhere" personality. And all the abilities to pull it off. Tough terrain? No problem. The 4WD SR5 has 11" of ground clearance — the best in its class. Equipped

**4Runner is your answer to the
call of the wild.**

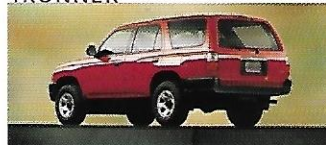
with protective skid plates, an available 183-hp V6 and optional locking rear differential, 4Runner can take you where few have gone and get you home again in style and comfort. 4Runner — it lets you get closer to nature...to feed your soul while satisfying your thirst for adventure.

Available in either 2- or 4-wheel drive, the Base 4Runner comes standard with a 2.7-liter, DOHC, 16-valve, 4-cylinder engine and dual front air bags.**

SR5 comes standard with 4-wheel ABS brakes, a 3.4-liter, DOHC, 24-valve V6, plus the added features in the Convenience Package.

In addition to all the features of the SR5, the Limited includes 16" aluminum alloy wheels and leather trim.

4RUNNER



4RUNNER SR5



4RUNNER LIMITED



DESERT DUNE PEARL

NATURAL WHITE

RADIANT RED*

SUNFIRE RED PEARL

AZURE BLUE PEARL*

COOL STEEL METALLIC*

STELLAR BLUE PEARL*

ANTHRACITE METALLIC

EVERGREEN PEARL

BLACK

*Not available on Limited.
**For information about driver and front passenger air bags, see footnote on page 8.

T100

COOL STEEL METALLIC

WARM WHITE

RADIANT RED

SUNFIRE RED PEARL

TROPICAL BLUE METALLIC

STELLAR BLUE PEARL

SIERRA GREEN METALLIC

BLACK

TWO-TONE STELLAR BLUE/
COOL STEEL METALLIC

TWO-TONE SIERRA GREEN/
LIGHT GREEN METALLIC

*Including the weight of occupants, optional equipment and cargo.

**See your Toyota dealer for details on required/recommended additional equipment and CCWR limits.

†Car and Driver '97 Buyer's Guide.

††For information about driver air bag, see footnote on page 8.

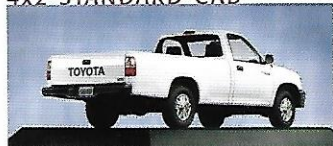
Because of its size, power and sophistication, the T100 can fit just about any job description. After all, its standard payload is a hefty 2,150 lbs.* And whether you choose its 150-hp 4-cylinder or the Xtracab's 190-hp V6, you can expect lots of low-end

Looking for a hard-workin' truck?

Check out this resumé.

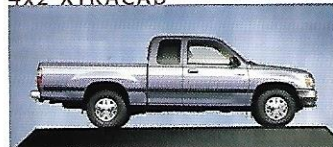
torque. In fact, the V6 makes 80% of its torque at just 1,200 rpm. So it doesn't take much throttle to get a heavy load moving. As a result, the 4x2 V6 will tow 5,200 lbs.** — the highest standard towing capacity of any V6 full-size truck. And inside, you'll find "Camry-like quality and accommodations."†

4x2 STANDARD CAB



Standard is a torquey 2.7-liter, twin-cam, 16-valve 4-cylinder, 5-speed manual transmission, power-assisted brakes and a driver air bag.††

4x2 XTRACAB



You get a 60/40 split bench seat and two forward-facing rear jump seats, 3.4-liter, DOHC, 24-valve, V6 engine and the All-Weather Guard Equipment Package.

4x2 XTRACAB SR5



All the equipment found on the Xtracab is standard, plus a sliding rear window with privacy glass, a tilt steering wheel and the Chrome Package.

4x4 XTRACAB



You get the long list of features that come standard on the 4x2 Xtracab plus the added traction and off-road versatility of 4-wheel drive.

4x4 XTRACAB SR5



This model has the same Chrome and All-Weather Guard Packages found on the 4x2 Xtracab SR5, plus the added security of 4-wheel traction.





T100 4x4 Xtracab SR5 shown in Cool Steel Metallic with alloy wheels, SR5 Value Package and Class III towing hitch receiver.



Tacoma 4x4 Xtracab Limited V6 shown in Black Metallic with TRD Off-Road Package.



TACOMA

Trust, reliability, longevity — qualities that Toyota Truck owners really understand. Powered by a tough, 142-hp, 4-cylinder engine, our most affordable 4x2 Regular Cab can haul 1,648 lbs.* — more base payload than any truck in its class. And when **Big-truck strength. Compact-truck economy. Together in Tacoma.**

equipped with an optional 190-hp V6, our roomy Xtracab can tow 5,000 lbs.** or go from 0-60 mph in just 7.7 seconds.† Off-road performance? With 12" of class-leading ground clearance, a Tacoma 4x4 delivers. And the TRD Off-Road Package helps you tackle bone-jarring dirt roads without jarring your bones.

Standard are dual air bags†† with a passenger bag cut-off switch, dual outside mirrors, power-assisted brakes and a 142-hp, 16-valve, 4-cylinder engine.

The Xtracab offers fold-down, forward-facing rear jump seats with 3-point seatbelts, tilt-out rear quarter windows and a 190-hp, 24-valve V6 (V6 models).

Add to the features of the 4x2 model part-time 4WD, a 150-hp, 16-valve, 4-cylinder engine, power-assisted rack-and-pinion steering and styled steel wheels.

Tacoma 4x4 Xtracab/Xtracab V6 — this Tacoma combines all of the 4x4 Regular Cab features with those of the 4x2 Xtracab/Xtracab V6.

It's everything the Xtracab V6 has plus power windows, door locks, cruise control, 15" aluminum alloy wheels and "shift-on-the-move" 4WD Demand 4-wheel drive.

4x2 REGULAR CAB



4x2 XTRACAB/XTRACAB V6



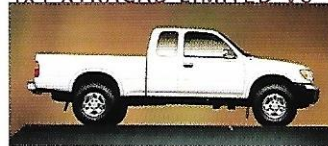
4x4 REGULAR CAB



4x4 XTRACAB/XTRACAB V6



4x4 XTRACAB LIMITED V6



SUPER WHITE[‡]

BLACK METALLIC

COPPER CANYON MICA[‡]

SUNFIRE RED PEARL

SIERRA BEIGE METALLIC[‡]

EVERGREEN PEARL[‡]

SURESIDE GREEN METALLIC[‡]

MYSTIC PURPLE MICA[‡]

COOL STEEL METALLIC[‡]

*Including the weight of occupants, optional equipment and cargo.

**See your Toyota dealer for details on required/recommended additional equipment and GCWR limits.

†AutoWeek, January 15, 1996.

††For information about driver and front passenger air bags, see footnote on page 8.

‡Not available with Color-Keyed Package.

‡‡Not available on Limited.



SIENNA

EXTERIOR

- Aerodynamic halogen headlamps (with auto-control system on XLE models)
- Washer-linked intermittent front windshield and intermittent rear wipers
- Available roof rack (standard on XLE)
- Available driver-side sliding door (standard on XLE)
- 15" wheels with P205/70R18 tires

INTERIOR

- Fabric seat and door trim
- Multi-adjustable driver's seat (power-adjustable on XLE)
- Removable center-row bench seat with adjustable headrests and seatback table with cup holders
- Removable third-row 50/50 split fold-down/tilt-forward seats with adjustable headrests and seatback table with cup holders
- Available dual air conditioning (standard on LE, XLE)
- Overhead console with garage door opener/sunglasses holder
- Adjustable steering wheel
- Front and rear auxiliary power outlets
- Front, center and rear dome lights and courtesy lamps

AUDIO SYSTEMS

- Deluxe ETR/Cassette with 4 speakers (CE, LE)
- Premium ETR/CD with 6 speakers (XLE)

SAFETY FEATURES

- Driver and front passenger air bag Supplemental Restraint System (SRS)
- 3-point shoulder belts with adjustable front shoulder belt anchors, driver's Emergency Locking Retractor (ELR) and front passenger Automatic/Emergency Locking Retractor (ALR/ELR)
- 2-point lap belt in third-seat center position
- Front shoulder belt pretensioners with force limiters
- Child-protector sliding door locks
- Power-assisted front disc/rear drum brakes with 4-sensor/3-channel ABS
- Anti-theft system with remote keyless entry; optional on LE, standard on XLE

MECHANICAL

- 3.0-liter 24-valve DOHC V6 engine
- Front-wheel drive
- 4-speed electronically controlled automatic overdrive (ECT) transmission
- Variable-assist power rack-and-pinion steering
- MacPherson strut independent front, torsion beam rear suspension



AVALON

EXTERIOR

- Aerodynamic multi-reflector halogen headlamps (with "auto on/off" feature on Avalon XLS)
- Dual color-keyed power outside mirrors (heated on XLS)
- Available glass moonroof
- High Solar Energy-Absorbing (HSEA) glass
- Integrated fog lamps (XLS)

INTERIOR

- Fabric rear seats with integrated headrests and center armrest
- Defroster-linked CFC-free air conditioning
- Tilt steering wheel
- Center console storage area with armrest and dual cup holder (bucket seat models)
- Power door locks with "anti-lockout" feature
- Power windows with 60-second "retained-power" feature
- Outside temperature gauge (XLS)
- Cruise control
- Dual illuminated visor vanity mirrors

AUDIO SYSTEMS

- Deluxe ETR/Cassette with 4 speakers (XL)
- Premium ETR/CD with 7 speakers and diversity reception (XLS)

SAFETY FEATURES

- Driver and front outboard passenger air bag Supplemental Restraint System (SRS)
- Driver and front outboard passenger seat-mounted side-impact air bag Supplemental Restraint System (SRS)
- 3-point front outboard shoulder belts with adjustable shoulder belt anchors and driver-side Emergency Locking Retractor (ELR), front passenger Automatic/Emergency Locking Retractor (ALR/ELR), center lap belt on bench seat models
- 3-point rear shoulder belts with Automatic/Emergency Locking Retractors (ALR/ELR)
- Front shoulder belt pretensioners with force limiters
- 4-wheel disc brakes with Anti-lock Brake System (ABS)
- Child-protector rear door locks

MECHANICAL

- 3.0-liter 24-valve DOHC V6 engine
- 4-speed electronically controlled automatic overdrive with intelligence (ECT-i) transmission
- Engine speed-sensing progressive power rack-and-pinion steering
- MacPherson strut front suspension with offset coil springs, gas-filled shock absorbers and stabilizer bar; dual-link independent MacPherson strut rear suspension with offset coil springs, gas-filled shock absorbers and stabilizer bar



CAMRY

EXTERIOR

- Aerodynamic halogen headlamps with "auto-off" feature
- Dual remote outside mirrors (heated on XLE)
- Intermittent windshield wipers
- High Solar Energy-Absorbing (HSEA) glass

INTERIOR

- Fabric seat and door trim with integrated armrests, dual map pockets and cut-pile carpeting with driver-side footrest
- 60/40 split fold-down rear seats with fold-down center armrest and security locks
- Defroster-linked CFC-free air conditioning (optional on CE)
- Cruise control (optional on CE)
- Tilt steering wheel
- Front and rear dual cup holders
- Auxiliary power outlet
- Power mirrors, windows and door locks (optional on CE)

AUDIO SYSTEMS

- Deluxe ETR/Cassette with 4 speakers (CE, LE)
- Premium ETR/CD with 6 speakers and diversity reception (XLE)

SAFETY FEATURES

- Driver and front passenger air bag Supplemental Restraint System (SRS)
- Driver and front passenger seat-mounted side-impact air bag Supplemental Restraint System (SRS), optional
- 3-point front shoulder belts with adjustable shoulder belt anchors, driver's Emergency Locking Retractor (ELR) and front passenger Automatic/Emergency Locking Retractor (ALR/ELR)
- 3-point rear shoulder belts for outboard and center passengers with Automatic/Emergency Locking Retractors (ALR/ELR)
- Front shoulder belt pretensioners with force limiters
- Anti-lock Brake System (ABS); standard on CE V6, LE and XLE models, optional on CE 4-cylinder
- Child-protector rear door locks

MECHANICAL

- 2.2-liter DOHC 16-valve 4-cylinder or 3.0-liter DOHC 24-valve V6 engine
- Front-wheel drive
- 5-speed manual overdrive, 4-speed electronically controlled automatic overdrive (ECT) or 4-speed electronically controlled automatic overdrive with intelligence (ECT-i) transmission
- Progressive-assist power rack-and-pinion steering
- MacPherson strut front suspension with gas-filled shock absorbers, stabilizer bar and vibration-dampening sub-frame; dual-link independent MacPherson strut rear suspension with gas-filled shock absorbers, stabilizer bar and vibration-dampening sub-frame



COROLLA

EXTERIOR

Aerodynamic multi-reflector halogen headlamps with daytime running lamps and auto on/off feature

Tinted glass

Intermittent front windshield wipers (non-intermittent on VE)

14" steel wheels with P175/65R14 tires (VE, CE);
14" steel wheels with P185/65R14 tires (LE)

INTERIOR

Fabric-trimmed interior with reclining front bucket, rear-bench seats with adjustable headrests in outboard positions, full carpeting and fabric headliner

Fold-down 60/40 split rear seat with adjustable headrests and security lock (CE/LE)

CFC-free air conditioning

Front dual cup holder, single rear cup holder

Center console armrest with integrated sunglasses holder (CE/LE)

Dual visor-mounted vanity mirrors

Digital clock (CE/LE)

AUDIO SYSTEMS

Deluxe ETR/Cassette with 4 speakers (CE, LE)

SAFETY FEATURES

Driver and front passenger air bag Supplemental Restraint System (SRS)

Driver and front passenger seat-mounted side-impact air bag Supplemental Restraint System (SRS), optional

3-point front shoulder belts with adjustable shoulder belt anchors, driver's Emergency Locking Retractor (ELR) and passenger-side Automatic/Emergency Locking Retractor (ALR/ELR)

3-point rear shoulder belts in all positions with Automatic/Emergency Locking Retractor (ALR/ELR)

Front shoulder belt pretensioners with force limiters

Child-protector rear door locks

Anti-lock Brake System (ABS), optional

Integrated Child Restraint Seat (CRS), available as an option on CE and LE Sedans

MECHANICAL

1.8-liter DOHC 16-valve 4-cylinder engine

5-speed manual overdrive, 3-speed automatic (VE) or 4-speed electronically controlled automatic overdrive transmission (ECT) (CE/LE)

Front-wheel drive

Power-assisted rack-and-pinion steering

Independent MacPherson strut front suspension (with stabilizer bar on LE models and CE models with optional touring package); independent MacPherson strut rear suspension with stabilizer bar, anti-vibration sub-frames front and rear and gas-filled shocks



TERCEL

EXTERIOR

Tinted glass

Dual black remote-controlled outside mirrors

All-Season steel-belted radial

Mist-cycle windshield wipers

Intermittent windshield wipers

INTERIOR

Cloth reclining front bucket seats with integrated headrests

Cloth 60/40 split fold-down rear seats with separate headrests and security lock

CFC-free air conditioning

Full carpeting

Rear window defogger (optional)

Dual front door map pockets

Dual cup holder

Rear quarter-area cup holders and storage pockets

AUDIO SYSTEMS

Deluxe ETR/Cassette with 4 speakers

SAFETY FEATURES

Driver and front passenger air bag Supplemental Restraint System (SRS)

3-point front seatbelts with driver-side Emergency Locking Retractor (ELR), passenger-side Automatic/Emergency Locking Retractor (A/ELR)

3-point outboard rear seatbelts with Automatic/Emergency Locking Retractors (A/ELR)

Front shoulder belt pretensioners with force limiters

Anti-lock Brake System (ABS)—optional

MECHANICAL

1.5-liter DOHC 16-valve 4-cylinder engine

Front-wheel drive

5-speed manual overdrive or 3-speed automatic overdrive transmission

Rack-and-pinion steering; power-assist optional

MacPherson strut front suspension with gas-filled shock absorbers, stabilizer bar and vibration-dampening sub-frame; trailing torsion beam rear suspension with stabilizer bar



SUPRA

EXTERIOR

Halogen headlamps and integrated projector fog lamps

Dual power color-keyed outside mirrors

Color-keyed rear spoiler

Intermittent rear window wiper

Available removable sport roof

16" 5-spoke aluminum alloy wheels (17" on turbo)

INTERIOR

Leather-trimmed sport seats with power driver's seat (standard on Turbo, included with Sport Roof on normally-aspirated Supra)

Defroster-linked CFC-free automatic air conditioning

Cruise control

Power windows with driver-side "auto-down" feature

Power door locks with "anti-lockout" feature

Leather-wrapped 3-spoke tilt steering wheel

Center console with storage area

Theft Deterrent System (TDS) with security light

Heavy-duty rear window defogger with timer and side window demisters

AUDIO SYSTEMS

Premium ETR/CD with 6 speakers and power diversity antenna (Base)

Premium 3-in-1 ETR/Cassette/CD with 7 speakers (with subwoofer) and power diversity reception (Sport Roof, Turbo)

SAFETY FEATURES

Driver and front passenger air bag Supplemental Restraint System (SRS)

3-point front and rear shoulder belts with driver-side Emergency Locking Retractor (ELR); front and rear passenger Automatic/Emergency Locking Retractors (ALR/ELR)

4-wheel ventilated disc brakes with Anti-lock Brake System (ABS)

All-speed Traction Control (TRAC), standard on Turbo models

MECHANICAL

3.0-liter DOHC 24-valve inline 6-cylinder with VVTi (Variable Valve Timing) or 3.0-liter DOHC 24-valve inline 6-cylinder engine with intercooled sequential twin turbochargers

4-speed automatic or 6-speed manual transmission

Vehicle speed-sensing progressive power rack-and-pinion steering

4-wheel independent double-wishbone suspension

*The specifications shown here are an abbreviated version of our 1997/1998 features and specifications charts. Some equipment may not be available on some models. For complete coverage, please refer to the individual vehicle brochures. Specifications and equipment are based on information at time of printing and are subject to change without notice.



CELICA

EXTERIOR

- Fog lamps (optional)
- Dual color-keyed power outside mirrors
- Variable intermittent front windshield wipers
- Tilt/slide power moonroof (optional)
- 15" steel wheels with P205/55R15 tires and full wheel covers
- 15" aluminum alloy wheels with P205/55R15 tires (optional, standard on Convertible)

INTERIOR

- Fabric seats with 4-way adjustable driver's seat, 3-way passenger's seat and fabric door trim with courtesy light/reflector
- Fold-down 50/50 rear seat with security locks
- CFC-free air conditioning
- Power windows and door locks
- Cruise control (Liftback, Convertible)
- Tilt steering wheel
- Dual visor vanity mirrors

AUDIO SYSTEMS

- Deluxe ETR/Cassette (Coupe)
- Deluxe ETR/CD (Liftback)
- Premium 3-in-1 ETR/Cassette/CD

SAFETY FEATURES

- Driver and front passenger air bag Supplemental Restraint System (SRS)
- 3-point front shoulder belts with driver-side Emergency Locking Retractor (ELR) and front passenger-side Automatic/Emergency Locking Retractor (A/ELR)
- 3-point rear shoulder belts with Automatic/Emergency Locking Retractors (A/ELR)
- Anti-lock Brake System (ABS)—optional
- Crumple zones and side-impact door beams

MECHANICAL

- 2.2-liter DOHC 16-valve 4-cylinder engine
- Front-wheel drive
- 5-speed manual override or 4-speed electronically controlled automatic override transmission
- Engine speed-sensing variable-assist power rack-and-pinion steering
- Independent MacPherson strut front suspension with offset coil springs, low-pressure gas-filled shock absorbers, ball-joint-type stabilizer bar and sub-frame; dual-link independent MacPherson strut rear suspension with offset coil springs, low-pressure gas-filled shock absorbers, ball joint-type stabilizer bar and sub-frame



RAV4

EXTERIOR

- Aerodynamic halogen multi-reflector headlamps
- Dual black outside mirrors
- Intermittent front and rear wipers
- Available power glass moonroof (4-Door)
- Available 3-spoke 16" aluminum alloy wheels with P215/70R167 tires

INTERIOR

- Reclining front and folding/reclining rear fabric seats with outboard headrests
- Available CFC-free air conditioning
- Fabric door inserts, front map pockets
- Available tilt steering
- Cup holders
- Front side-window demisters
- Rear window defogger
- Available cruise control
- Passenger-side vanity mirror
- Auxiliary power outlet

AUDIO SYSTEMS

- Deluxe ETR/Cassette with 4 speakers and antenna (optional)
- Deluxe ETR/CD with 4 speakers and antenna (optional)

SAFETY FEATURES

- Driver and front passenger air bag Supplemental Restraint System (SRS)
- Adjustable driver-side and front passenger-side outboard shoulder belt anchors (4-Door models only)
- 3-point shoulder belts in outboard positions
- Available 4-wheel Anti-lock Brake System (ABS)

MECHANICAL

- 2.0-liter DOHC 16-valve 4-cylinder engine
- Front-wheel drive (2WD) or full-time 4-wheel drive (4WD)
- 5-speed manual or 4-speed electronically controlled automatic transmission
- Power-assisted rack-and-pinion steering
- Independent MacPherson strut front suspension with stabilizer bar and hydraulic shock absorbers; double-wishbone coil-spring rear suspension with hydraulic shock absorbers



LAND CRUISER

EXTERIOR

- Aerodynamic halogen headlamps with "auto control" feature
- Variable intermittent front wipers
- Front and rear towing hooks
- Tilt/slide power glass moonroof with sliding sunshade
- 16" aluminum alloy wheels with P275/70R16 tires

INTERIOR

- Leather trimmed seat with power front seat adjustments (optional)
- Available Third Seat Package with 50/50 split/folding/removable seat, 3-point ALR/ELR shoulder belts for outboard (lap belt for center), power rear quarter windows and cup holders
- CFC-free automatic air conditioning
- Front and rear heaters
- Power windows and door locks
- Cruise control
- Center console storage area
- Dual illuminated vanity mirror

AUDIO SYSTEMS

- Premium 3-in-1 ETR/Cassette/CD with 7 speakers and FM diversity reception

SAFETY FEATURES

- Driver and front passenger air bag Supplemental Restraint System (SRS)
- 3-point Automatic/Emergency Locking Retractor (A/ELR) seatbelts in all outboard and second-row center passenger positions; 2-point lap belt in third-row center seating position
- Front seatbelt pretensioners with force limiters
- Full-time 4-wheel drive
- 4-wheel disc brakes with Anti-lock Brake System (ABS)
- Child-proof rear door locks
- Side-impact door beams

MECHANICAL

- 4.7-liter DOHC 32-valve V8 engine
- Full-time 4-wheel drive
- Locking center differential
- Locking rear differential (optional)
- 4-speed electronically controlled automatic override (ECT) transmission
- Power-assisted rack-and-pinion steering
- Independent front suspension with torsion bars and stabilizer bar; 4-link rear with coil springs, stabilizer bar and solid link rear axle



4RUNNER

EXTERIOR

- Dual outside mirrors
- Rear windshield wiper and defogger
- Power retractable rear window
- Available power tilt/slide glass moonroof with sliding sunshade (optional)
- 15" styled steel wheels with P225/75R15 tires (4Runner, 4Runner SR5)
- 16" aluminum alloy wheels with P265/70R16 tires (standard on Limited, optional on SR5)

INTERIOR

- Fabric-faced reclining front bucket seats with adjustable headrests, split fold-down rear bench seat with outboard headrests and sculpted door panels with fabric trim (full-fabric seats on SR5 models, leather trim on Limited)
- Available defroster-linked CFC-free air conditioning
- Tilt steering wheel (includes variable intermittent windshield wipers; color-keyed on 4Runner Limited, not available on Base 4Runner)
- Center console with storage area, front and rear cup holders
- Available power windows and door locks
- Rear cargo area power outlet
- Available cruise control

AUDIO SYSTEMS

- Deluxe AM/FM ETR/Cassette with 4 speakers (4Runner, SR5)
- Premium ETR/CD with 6 speakers (Limited)

SAFETY FEATURES

- Driver and front passenger air bag Supplemental Restraint System (SRS)
- 3-point Automatic/Emergency Locking Retractor (ALR/ELR) shoulder belts and headrests in all outboard seating positions (ELR function only on driver belt)
- 2-point lap belt in rear center seating position
- 4-wheel Anti-lock Brake System (ABS); optional on 4Runner, standard on 4Runner SR5 and Limited
- Child-protector rear door locks

MECHANICAL

- 2.7-liter DOHC 16-valve 4-cylinder (Base) or 3.4-liter DOHC 24-valve V6 engine (SR5, Limited)
- 5-speed manual overdrive or 4-speed electronically controlled automatic overdrive (ECT) transmission
- Engine speed-sensing power-assisted rack-and-pinion steering
- Front coil-spring independent double-wishbone suspension with low-pressure gas-filled shock absorbers and stabilizer bar; rear 4-link/coil-spring with low pressure gas-filled shock absorbers and stabilizer bar



T100

EXTERIOR

- Double-walled bed, with 2-tier loading and stake pockets
- Dual black outside mirrors w/passenger-side convex mirror (driver's mirror on 4-cyl. T100)
- Tilt-out rear quarter windows (Xtracab)
- Available sliding rear window with privacy glass (Xtracab)
- 15" styled steel wheels with P215/75R15 (4x2) or P235/75R15 (4x4) steel-belted radial tires

INTERIOR

- Available 60/40 fully split cloth bench seat with center armrest and cloth door trim (Xtracab, SR5 include armrest storage compartment)
- Dual rear-quarter storage compartments (Xtracab)
- Dual cup holder
- Full carpeting with driver-side footrest (Xtracab)
- Available tilt steering wheel
- Available cruise control (includes leather-wrapped steering wheel on Xtracab SR5)

AUDIO SYSTEMS

- Deluxe ETR/Cassette with 4 speakers (SR5)

SAFETY FEATURES

- Driver air bag Supplemental Restraint System (SRS)
- 3-point adjustable shoulder belts in outboard positions with driver-side Emergency Locking Retractors (ELR) and passenger-side Automatic/Emergency Locking Retractors (ALR/ELR) with center-position lap belts
- 3-point rear shoulder belts in outboard positions with Automatic/Emergency Locking Retractors (ALR/ELR) and center lap belt (Xtracab models only)
- Anti-lock Brake System (ABS), optional on T100 and T100 SR5 models

MECHANICAL

- 2.7-liter in-line twin-cam DOHC 16-valve 4-cylinder engine or 3.4-liter DOHC 24-valve V6
- 5-speed manual overdrive or 4-speed electronically controlled overdrive (ECT) transmission
- Power-assisted steering—4x2 models: rack-and-pinion; 4x4 models: recirculating ball
- 4x2: Independent front torsion bar suspension with upper and lower A-arms and stabilizer bar; 4x4: Hi-Trac independent front torsion bar with upper and lower A-arms and stabilizer bar; all models: rear leaf spring with staggered shock absorbers



TACOMA

EXTERIOR

- Double-walled bed
- Dual outside mirrors
- Available pop-up/removable moonroof with removable sunshade
- Available sliding rear window (with gray privacy glass on Xtracab models)
- Tilt-out rear quarter windows—Xtracab
- Aluminum alloy wheels with P225/75R15 tires (standard on Limited, optional on other models)

INTERIOR

- Fabric seats with headrests and fabric door trim
- Available CFC-free air conditioning
- Full carpeting
- Dual auxiliary power outlets
- Dual cup holder
- Available tilt steering wheel

AUDIO SYSTEMS

- Deluxe ETR/Cassette with 4 speakers (Limited)

SAFETY FEATURES

- Driver and passenger air bag Supplemental Restraint System (SRS) with passenger air bag cut-off switch
- 3-point front shoulder belts in outboard positions; driver-side Emergency Locking Retractors (ELR), front passenger-side Automatic/Emergency Locking Retractors (ALR/ELR) and center lap belt
- 3-point rear shoulder belts with Automatic/Emergency Locking Retractors (ALR/ELR), Xtracab models
- 4-wheel Anti-lock Brake System (ABS), optional

MECHANICAL

- 2.4-liter (4x2) or 2.7-liter (4x4) DOHC 4-cylinder engine or 3.4-liter DOHC V6 engine
- 5-speed manual overdrive or 4-speed automatic overdrive transmission
- Rack-and-pinion steering (power-assist standard on V6 and 4x4 models, optional on 4x2 4-cylinder models)
- Independent coil-spring, double-wishbone front suspension with stabilizer bar and hydraulic shock absorbers; leaf-spring rear suspension with staggered shock absorbers

*The specifications shown here are an abbreviated version of our 1997/1998 features and specifications charts. Therefore, some equipment may not be shown. For complete coverage, please refer to the individual vehicle brochures. Specifications and equipment are based on information at time of printing and are subject to change without notice.

Printed on chlorine-free bleached paper.

Castrol Toyota's Motorsports Partner



PRINTED ON RECYCLED PAPER
10% POST CONSUMER FIBER



TOYOTA | *everyday*