

The 2006 Saturn ION









The ION-3 sedan comes with standard 2.4L engine, ABS & Traction Control, 16-inch alloy wheels, fog lamps and standard rear spoiler. Shown here in Berry Red, and in every colour at saturncanada.com.

We know you want a car that doesn't ask you to compromise.

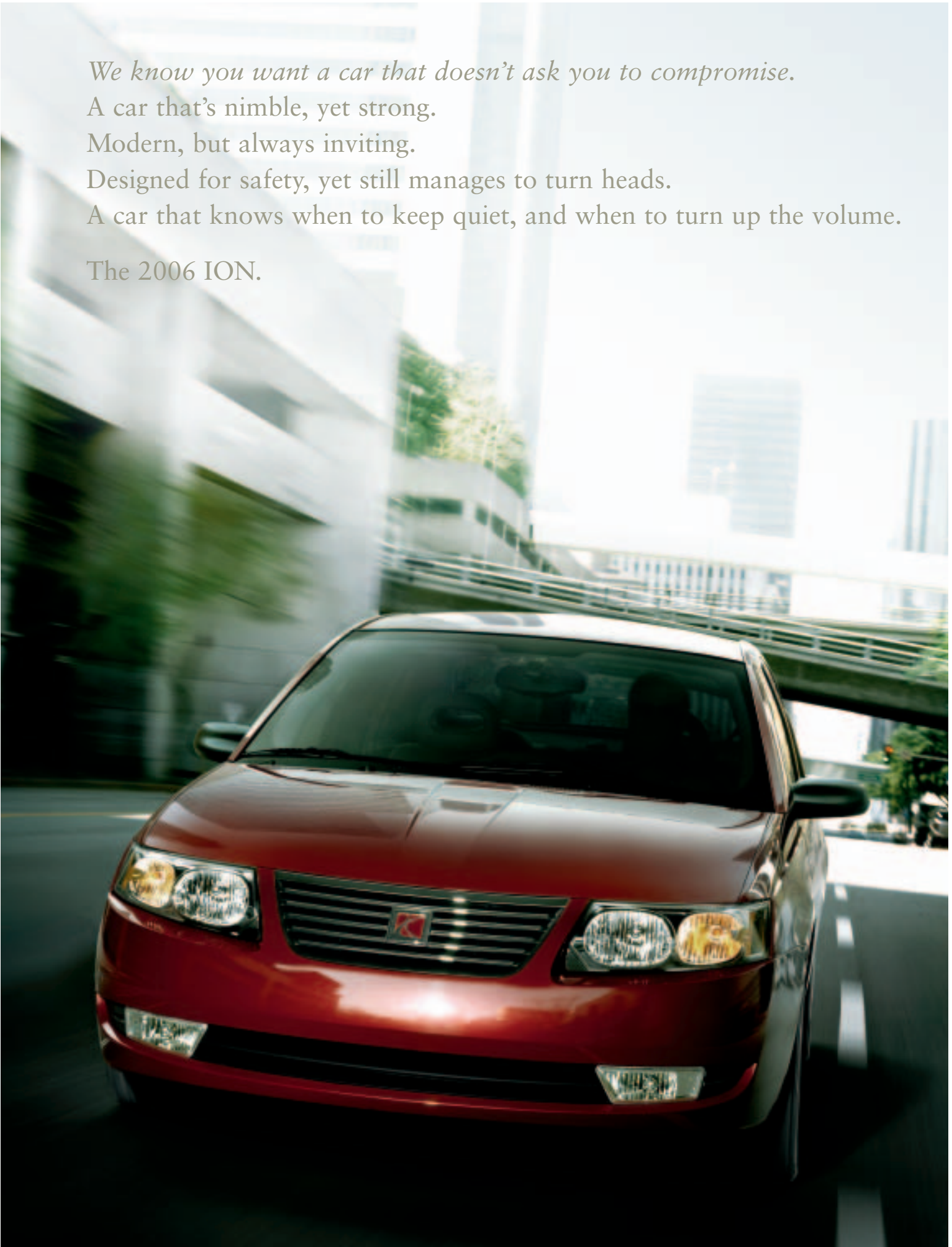
A car that's nimble, yet strong.

Modern, but always inviting.

Designed for safety, yet still manages to turn heads.

A car that knows when to keep quiet, and when to turn up the volume.

The 2006 ION.



Take the road by surprise. You'd think the road would've seen it all. Fast cars and efficient cars, sleek exteriors and sticky tires, cars that are quiet and modern, safe and refined. But the ION sedan and Quad Coupe fall into that unique category: all of the above. Under the hood, the standard 140-horsepower engine provides punch, power, and a welcome appreciation for fuel efficiency. The ION•3 comes with a 170-horsepower, 2.4-litre engine with Variable Valve Timing that we paired with anti-lock brakes and a sport-tuned suspension. Naturally, the interior has been equally well engineered, right down to the generous use of high-tech Quiet Steel® sound-insulating material, which helps keep the road from interrupting your friends, your music and your driving fun.





The Storm Grey ION-3 sedan, now comes with a 2.4L engine.



The ION-3 features a height-adjustable driver's seat with adjustable lumbar support. Sedan shown with available Grey Leather Package and other available features.







The ION 3 Quad Coupe comes with standard 2.4L engine, ABS & Traction Control, machined five-spoke 16-inch alloy wheels, fog lamps, and a rear spoiler. Shown in Silver Nickel.



The ION-3 Quad Coupe shown with available features, including single in-dash CD/MP3 player and auxiliary input jack. Visit saturncanada.com for all your audio options.



You'll never run out of music again. The ION takes your musical responsibilities seriously, with an interior designed for acoustic greatness. A CD player with an AM/FM stereo comes standard across all models. Uplevel systems are equipped with a CD/MP3 player with 36 preset buttons, automatic speed-compensated volume, and a Music Navigator that lets you sort MP3s by artist and album. *All ION stereos come with an added bonus—a built-in auxiliary jack, so you can easily plug your MP3 player right into the stereo system.* Saturn's Advanced Audio System gives you a 160-watt external amplifier and six premium speakers. Let the tuning begin.



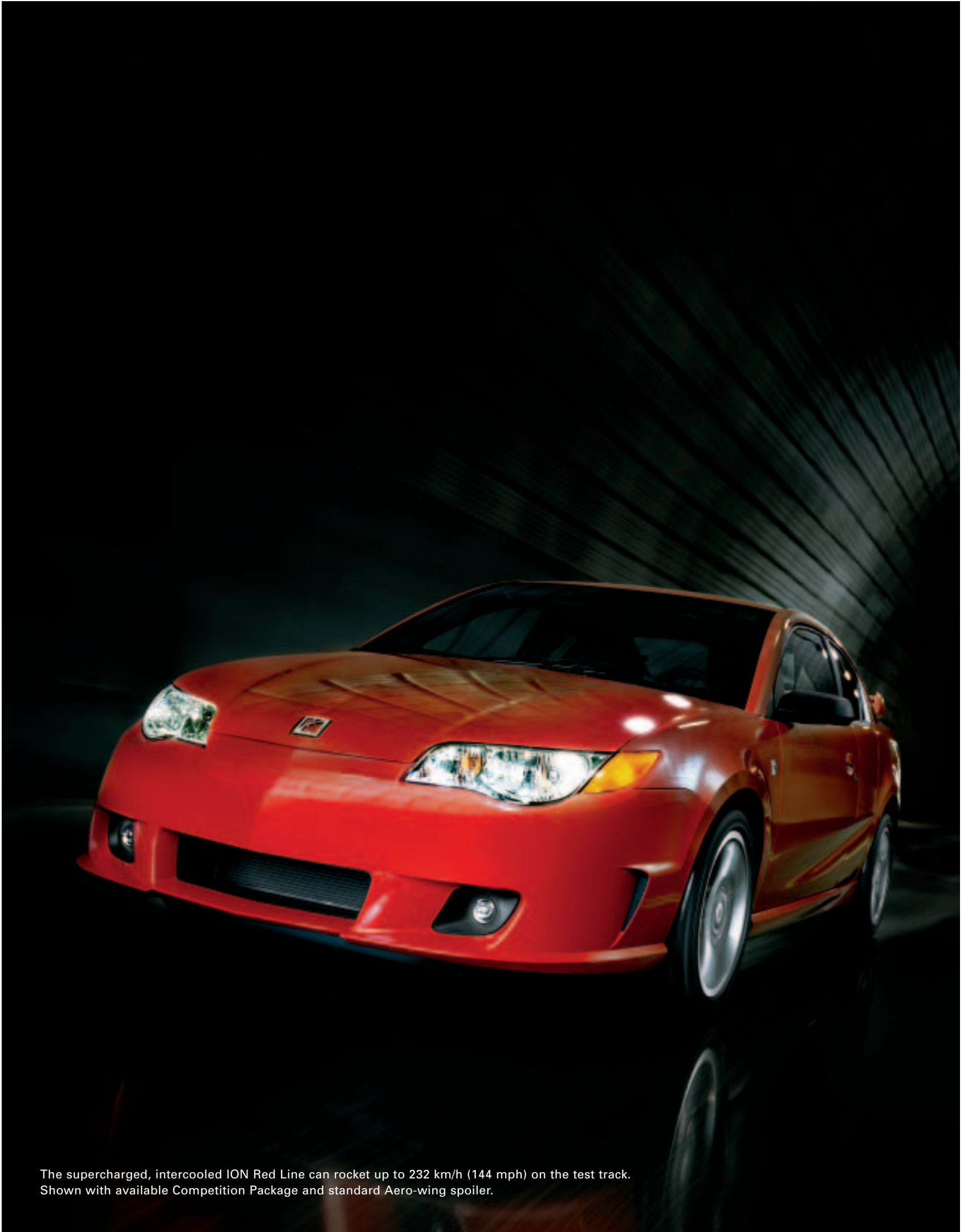


Standard rear quad doors, split folding rear seat backs and a fold-flat front passenger seat make the ION Quad Coupe surprisingly versatile.



The multi-talented ION Quad Coupe. No one wants to find themselves with too many friends and too little car, a snowboard and nowhere to put it, a new piece of furniture and no way to get it home. For all the things—expected and unexpected—life can throw your way, Saturn engineers have come up with a rare, best-of-both-worlds solution: the ION Quad Coupe. It offers the versatility of a four-door car, dressed in the lean lines of a coupe. Rear quad doors, split folding rear seat backs and a fold-flat front passenger seat work together to give a cargo area that's over two metres long.¹ So you can even invite that friend who always brings too much along for a ride.

¹Cargo and load capacity limited by weight and distribution. ION-3 shown in Silver Nickel with Black Leather Package.



The supercharged, intercooled ION Red Line can rocket up to 232 km/h (144 mph) on the test track. Shown with available Competition Package and standard Aero-wing spoiler.



Track-tuned and tested in Germany. We took the ION Red Line to the Nürburgring test track and came back with these performance credentials: a top speed of 232 km (144 mph), 200 lb-ft of torque, and the cornering power to generate 0.85 lateral Gs. The 205-horsepower supercharged and intercooled engine goes from 0 to 97 in 6.3 seconds, while the 4-wheel disc brakes with oversized rotors bring you back down from 97 to 0 in just 119 feet. The available Competition Package also offers a limited slip differential, which pulls you through curves for improved acceleration while cornering. Also included: an illuminated ladder tachometer—a first among production cars—with supercharger boost gauge. The individually adjustable tachometer translates real-time data from the engine into the information you need to hit perfect shifts consistently and precisely.



0 to 97 km/h (60 mph) in 6.3 seconds





The ION Red Line is equipped with a short-throw shifter, heel-toe pedal placement, and body-hugging RECARO Sport Seats with Black Leather bolsters.



Shown with available Competition Package.



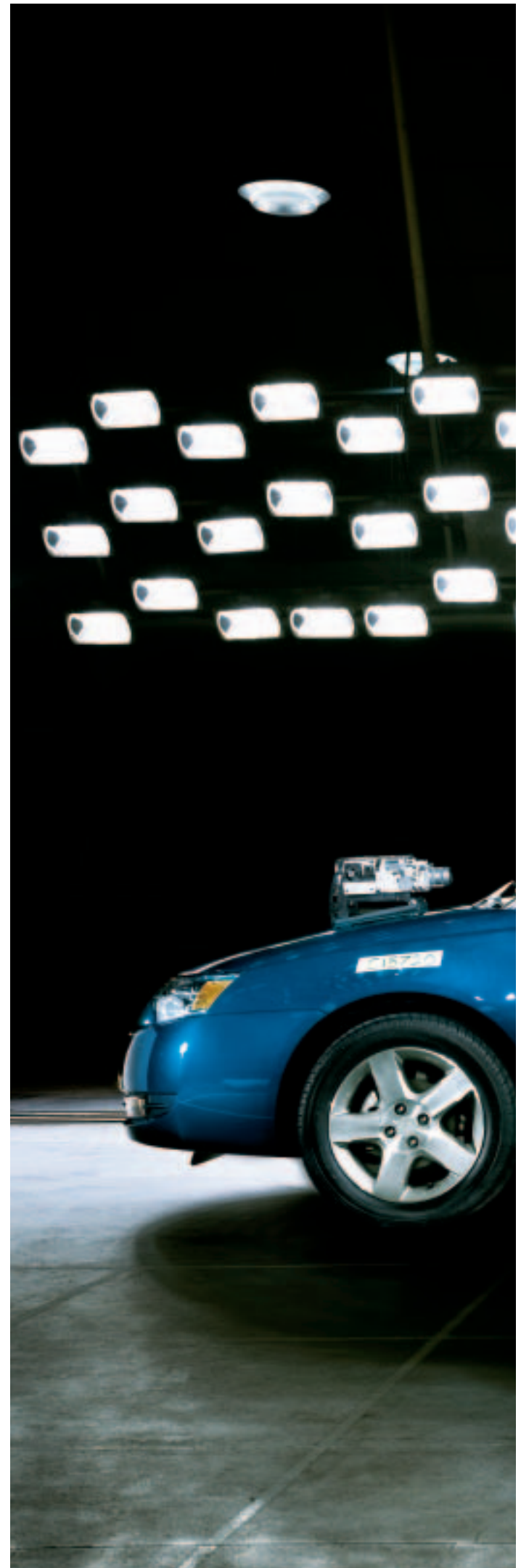
The ION Red Line in Chili Pepper Red with Z-rated tires, 17-inch forged alloy wheels, available Competition Package and standard rear Aero-wing spoiler.





★★★★★ Highest US Government Safety Rating for Front Impact

Safety is all around you. Thanks to meticulously engineered safety tools, the 2006 ION earned the US National Highway Traffic Safety Administration's top rating of five stars in front-impact crash tests.¹ In addition to its high-strength steel spaceframe, the ION is designed with dual-stage front air bags,² which use sensors to instantaneously measure collision conditions and determine how the air bags should be deployed. We also built in a Passenger Sensing System that turns the front passenger air bag² off if it detects small or out-of-position occupants. Finally, we made OnStar[®] with one-year Safe & Sound Service Plan³ an optional feature on ION. OnStar can save time by unlocking locked doors; more importantly, it can save lives by automatically sending for help if your air bags deploy. For a complete list of the ION's safety features, including available head curtain side air bags² and ABS brakes, visit saturncanada.com.





¹See inside back cover for important information about the ION's safety rating. ²Air bag inflation can cause severe injury or death to anyone too close to the bag when it deploys. Be sure every occupant is properly restrained. ³See inside back cover for important information about OnStar.

ION Sedan Exterior Colours

Every colour and lots of angles. Visit saturncanada.com for an even better view.



Polar White



Black Onyx



Silver Nickel



Berry Red



Storm Grey



Golden Cashmere



Pacific Blue



Cypress Green

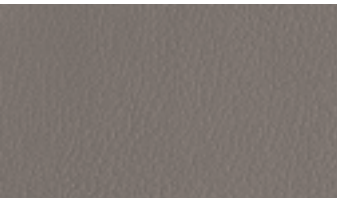
ION Sedan Interior Colours



Grey Cloth (ION•1 & ION•2)



Grey Cloth (ION•3)



Grey Leather (ION•3)



Tan Cloth (ION•1 & ION•2)



Tan Cloth (ION•3)



Tan Leather (ION•3)

ION Sedan Colour Combinations

Exterior Paint	Cloth (ION•1 & ION•2 & ION•3)	Available Leather Package (ION•3)
Polar White	Grey, Tan	Grey, Tan
Black Onyx	Grey, Tan	Grey, Tan
Silver Nickel	Grey	Grey
Berry Red	Grey, Tan	Grey, Tan
Storm Grey	Grey	Grey
Golden Cashmere	Tan	Tan
Pacific Blue	Grey, Tan	Grey, Tan
Cypress Green	Grey, Tan	Grey, Tan

ION Sedan Wheels



15" Standard Cover
(ION•1 & ION•2)



16" Available Alloy
(ION•2)



16" Standard Alloy
(ION•3)

ION Sedan Specifications

Engine and Transmission	ION-1		ION-2		ION-3 (2.4L)	
Engine	2.2-litre, 16-valve, inline-4		2.2-litre, 16-valve, inline-4		2.4-litre, 16-valve, VVT, inline-4	
Horsepower	140 @ 5,800 rpm		140 @ 5,800 rpm		170 @ 6,200 rpm	
Torque (lb-ft)	145 @ 4,400 rpm		145 @ 4,400 rpm		162 @ 5,000 rpm	
Transmission (standard)	5-speed manual		5-speed manual		5-speed manual	
Transmission (available)	4-speed automatic		4-speed automatic		4-speed automatic	
Chassis						
Drivetrain	Front-engine/front-wheel drive					
Body construction	Steel spaceframe with front and rear crumple zones and side-impact protection					
Suspension	Independent front and semi-independent torsion-beam rear with front and rear stabilizer bars (2.2L/2.4L)					
	Sport-tuned strut valves and larger diameter stabilizer bars (2.4L)					
Steering	Electric power with variable assist, tuned for each model					
Brakes	Power-assisted ventilated front disc/rear drum					
Weights and Capacities						
Curb weight, manual/automatic kg (lb.)	2,743/2,802		2,772/2,831		—/—	
Passenger volume litres (cu. ft.)	2,632 (93.0)		2,632 (93.0)		2,632 (93.0)	
Cargo-area volume litres (cu. ft.) ¹	416 (14.7)		416 (14.7)		416 (14.7)	
Passenger seating	5		5		5	
Fuel capacity approx. litres (imp. gal.)	11.2 (50)		11.2 (50)		11.2 (50)	
Fuel Economy Estimates City / Hwy L/100 km (mpg)²						
	City	Hwy.	City	Hwy.	City	Hwy.
Manual transmission	9.5L/100km (30mpg)	6.1L/100km (46mpg)	9.5L/100km (30mpg)	6.1L/100km (46mpg)	9.4L/100km (30mpg)	6.3L/100km (45mpg)
Automatic transmission	9.9L/100km (29mpg)	6.7L/100km (42mpg)	9.9L/100km (29mpg)	6.7L/100km (42mpg)	9.3L/100km (30mpg)	6.6L/100km (45mpg)
Exterior Dimensions mm (in.)						
Length	4,686 (184.5)		4,686 (184.5)		4,686 (184.5)	
Wheelbase	2,621 (103.2)		2,621 (103.2)		2,621 (103.2)	
Width	1,707 (67.2)		1,707 (67.2)		1,707 (67.2)	
Height	1,458 (57.4)		1,458 (57.4)		1,458 (57.4)	
Track, front/rear	1,494/1,483 (58.8/58.4)		1,494/1,483 (58.8/58.4)		1,494/1,483 (58.8/58.4)	
Interior Dimensions front / rear mm (in.)						
Legroom	1,072/845 (42.2/33.3)		1,072/845 (42.2/33.3)		1,072/845 (42.2/33.3)	
Headroom	1,016/940 (40.0/37.0)		1,016/940 (40.0/37.0)		1,016/940 (40.0/37.0)	
Shoulder room	1,364/1,341 (53.7/52.8)		1,364/1,341 (53.7/52.8)		1,364/1,341 (53.7/52.8)	
Hip room	1,257/1,259 (49.6/49.6)		1,257/1,259 (49.6/49.6)		1,257/1,259 (49.6/49.6)	

ION Sedan Features and Options

For a complete list, visit saturncanada.com

Comfort and Convenience	ION-1	ION-2	ION-3 (2.4L)
60/40-split folding rear seat backs	●	●	●
Adjustable steering column	●	●	●
Air conditioning with dust and pollen filter	○	●	●
Dent/corrosion-resistant bodyside panels	●	●	●
Dual 12-volt power outlets	●	●	●
Dual visor vanity mirrors	●	●	●
Flat-towable behind recreational vehicle	●	●	●
Floor mats, carpeted front and rear	●	●	●
Front console with adjustable armrest, enclosed storage and dual front cupholders	●	●	●
Height-adjustable driver's seat (ION-3 includes manual lumbar adjustment)	●	●	●
LCD message centre including low-fuel indicator and oil-life monitor	●	●	●
Leather Package: leather-trimmed seats, steering wheel and automatic shift knob	—	—	○
Power door locks with anti-lockout, delayed locking and programmable lock/unlock	●	●	●
Power sunroof ³	○	○	○
Convenience Package: power windows and exterior mirrors, cruise control, remote keyless entry with alarm activation, panic/alert mode and power trunk release	—	●	●
Rear spoiler	○	○	●
Rear window defogger with manual shutoff and timed reset	●	●	●
Retained accessory power	●	●	●
Storage compartments: four bins in instrument panel, front and rear door map pockets, and glovebox	●	●	●
Travel Package: auto-dimming interior rear-view mirror with outside temperature and compass display, and driver and passenger map lights	—	○	○
Warning chimes for headlamps on, key in ignition, low fuel, parking brake on and turn signal left on	●	●	●
Safety and Security			
Anti-lock brakes with Traction Control	○	○	●
Automatic Light Control	—	—	●
Battery run-down protection for interior and cargo area lighting	●	●	●
Child-security rear-door locks	●	●	●
Daytime running lamps	●	●	●
Dual-stage driver and front passenger air bags with Passenger Sensing System ⁴	●	●	●
Engine-immobilizing theft-deterrent feature	●	●	●
Fog lamps	—	—	●
Head Curtain Side Air Bags ⁴	○	○	○
Height-adjustable front safety belts with pretensioners and energy-absorbing retractors	●	●	●
Lower Anchorages and Top Tethers for Children (LATCH) in all rear seating positions	●	●	●
OnStar [®] System with one-year Safe & Sound Service Plan ⁵ (Part of Technology Package)	—	○	○
Secure trunk feature with locking seat backs, trunk release disable, and emergency trunk release handle	●	●	●
Entertainment Systems			
CD player with AM/FM stereo, standard auxiliary input jack and four extended-range speakers	●	●	—
CD/MP3 player with AM/FM stereo, standard auxiliary input jack, speed-compensated volume and four coaxial speakers	—	○	●
Saturn Advanced Audio System: 160-watt external amplifier and six premium speakers ^{3,6}	—	○	○
Single in-dash CD/MP3 player with AM/FM stereo, standard auxiliary input jack, speed-compensated volume and four coaxial speakers	—	○	○

● = standard ○ = available — = not available

¹Cargo and load capacity limited by weight and distribution. ²Based on GM testing. EPA estimate not yet available. ³Requires Convenience Package. ⁴See inside back cover for important information about air bags, including a note about child safety. ⁵See inside back cover for important information about OnStar. ⁶Requires CD/MP3 player.

ION Quad Coupe Exterior Colours

Visit saturncanada.com. It's the closest you can come to kicking the tires without leaving home.



Polar White (N/A Red Line)



Black Onyx



Silver Nickel



Chili Pepper Red

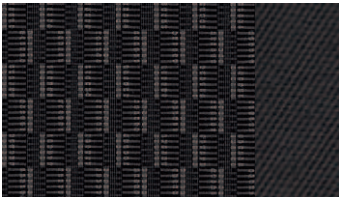


Fusion Orange¹ (N/A Red Line)



Pacific Blue

ION Quad Coupe Interior Colours



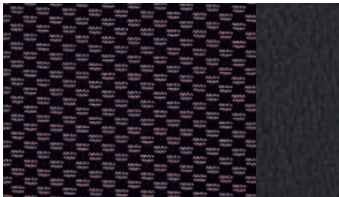
Black Cloth (ION•1 & ION•2)



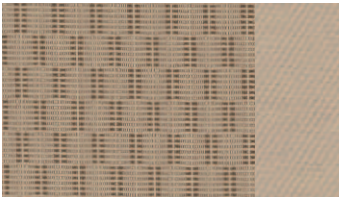
Black Cloth (ION•3)



Black Leather (ION•3)



Sport Cloth (Red Line)



Tan Cloth (ION•1 & ION•2)



Tan Cloth (ION•3)



Tan Leather (ION•3)

ION Quad Coupe Colour Combinations

Exterior Paint	Cloth (ION•1 & ION•2 & ION•3)	Available Leather Package (ION•3)	Leather Accents / Cloth (Red Line)
Polar White	Black, Tan	Black, Tan	—
Black Onyx	Black, Tan	Black, Tan	Black/Grey
Silver Nickel	Black	Black	Black/Grey
Chili Pepper Red	Black, Tan	Black, Tan	Black/Grey
Fusion Orange ¹	Black, Tan	Black, Tan	—
Pacific Blue	Black, Tan	Black, Tan	Black/Grey

ION Quad Coupe Wheels



15" Standard Cover
(ION•1 & ION•2)



Available on
(ION•2)



16" Standard Alloy
(ION•3)



17" Standard Forged Alloy
(Red Line)



17" Available Forged Alloy
(Red Line)

¹Not available at start of 2006 model year.

ION Quad Coupe Specifications

Engine and Transmission	ION-1		ION-2		ION-3 (2.4L)		Red Line	
Engine	2.2-litre, 16-valve, inline-4		2.2-litre, 16-valve, inline-4		2.4-litre, 16-valve, VVT, inline-4		2.0-litre, 16-valve, supercharged intercooled, inline-4	
Horsepower	140 @ 5,800 rpm		140 @ 5,800 rpm		170 @ 6,200 rpm		205 @ 5,600 rpm	
Torque (lb-ft)	145 @ 4,400 rpm		145 @ 4,400 rpm		162 @ 5,000 rpm		200 @ 4,400 rpm	
Transmission (standard)	5-speed manual		5-speed manual		5-speed manual		5-speed manual	
Transmission (available)	4-speed automatic		4-speed automatic		4-speed automatic		—	
Chassis								
Drivetrain	Front-engine/front-wheel drive							
Body construction	Steel spaceframe with front and rear crumple zones and side-impact protection							
Suspension	Independent front and semi-independent torsion-beam rear with front and rear stabilizer bars (2.2L/2.4L/Red Line) Sport-tuned strut valves and larger diameter stabilizer bars (2.4L) Racetrack-tuned springs, shocks, bushings and stabilizer bars (Red Line)							
Steering	Electric power with variable assist, tuned for each model							
Brakes	Power-assisted ventilated front disc/rear drum (ION-2/ION-3/ION-3 2.4L); four-wheel disc with oversized rotors (Red Line)							
Weights and Capacities								
Curb weight, manual/automatic kg (lb.)	2,784/2,843		2,812/2,871		— / —		2,933 / —	
Passenger volume litres (cu.ft.)	2,470 (87.3)		2,470 (87.3)		2,470 (87.3)		2,470 (87.3)	
Cargo-area volume litres (cu.ft.) ¹	401 (14.2)		401 (14.2)		401 (14.2)		401 (14.2)	
Passenger seating	4		4		4		4	
Fuel capacity approx. litres (approx. imp. gal.)	50 (11.2)		50 (11.2)		50 (11.2)		50 (11.2)	
Fuel Economy Estimates City / Hwy L/100 km (mpg) ²								
	City	Hwy.	City	Hwy.	City	Hwy.	City	Hwy.
Manual transmission	9.5L/100km (30mpg)	6.1L/100km (46mpg)	9.5L/100km (30mpg)	6.1L/100km (46mpg)	9.5L/100km (30mpg)	6.1L/100km (46mpg)	10.1L/100km (28mpg)	7.3L/100km (39mpg)
Automatic transmission	9.9L/100km (29mpg)	6.7L/100km (42mpg)	9.9L/100km (29mpg)	6.7L/100km (42mpg)	9.9L/100km (29mpg)	6.7L/100km (42mpg)	10.1L/100km (28mpg)	7.3L/100km (39mpg)
Exterior Dimensions mm (in.)								
Length	4,699 (185.0)		4,699 (185.0)		4,699 (185.0)		4,699 (185.0)	
Wheelbase	2,621 (103.2)		2,621 (103.2)		2,621 (103.2)		2,621 (103.2)	
Width	1,725 (67.9)		1,725 (67.9)		1,725 (67.9)		1,725 (67.9)	
Height	1,422 (56.0)		1,422 (56.0)		1,422 (56.0)		1,422 (56.0)	
Track, front/rear	1,494/1,483 (58.8/58.4)		1,494/1,483 (58.8/58.4)		1,494/1,483 (58.8/58.4)		1,494/1,483 (58.8/58.4)	
Interior Dimensions front / rear mm (in.)								
Legroom	1,072/831 (42.2/32.7)		1,072/831 (42.2/32.7)		1,072/831 (42.2/32.7)		1,072/831 (42.2/32.7)	
Headroom	988/927 (38.9/36.5)		988/927 (38.9/36.5)		988/927 (38.9/36.5)		988/927 (38.9/36.5)	
Shoulder room	1,372/1,295 (54.0/51.0)		1,372/1,295 (54.0/51.0)		1,372/1,295 (54.0/51.0)		1,372/1,295 (54.0/51.0)	
Hip room	1,255/1,227 (49.4/48.3)		1,255/1,227 (49.4/48.3)		1,255/1,227 (49.4/48.3)		1,255/1,227 (49.4/48.3)	

ION Quad Coupe Features and Options

For a complete list, visit saturncanada.com

Comfort and Convenience	ION-1	ION-2	ION-3 (2.4L)	Red Line
60/40-split folding rear seat backs	●	●	●	●
Adjustable steering column	●	●	●	●
Air conditioning with dust and pollen filter	○	●	●	●
Competition Package: limited slip differential, boost gauge, illuminated ladder tachometer, and custom grey painted wheels with polished rims	—	—	—	○
Dent/corrosion-resistant bodyside panels	●	●	●	●
Dual 12-volt power outlets	●	●	●	●
Dual visor vanity mirrors	●	●	●	●
Flat-towable behind recreational vehicle	●	●	●	●
Floor mats, carpeted front and rear	●	●	●	●
Fold-flat front passenger seat back with scuff-resistant back	●	●	●	—
Front console with adjustable armrest, enclosed storage and dual front cup holders	●	●	●	—
LCD message centre including low-fuel indicator and oil-life monitor	●	●	●	●
Leather Package: leather-trimmed seats, steering wheel and automatic shift knob	—	—	○	—
Leather-trimmed RECARO Sport Seats and leather-wrapped steering wheel	—	—	—	●
Power door locks with anti-lockout, delayed locking and programmable lock/unlock	●	●	●	●
Power sunroof ³	○	○	○	○
Convenience Package: power windows and exterior mirrors, cruise control, remote keyless entry with alarm activation, panic/alert mode and power trunk release	—	●	●	●
Rear spoiler	○	○	●	● (Aero-wing)
Rear window defogger with manual shutoff and timed reset	●	●	●	●
Storage compartments: four bins in instrument panel, front and rear door map pockets, and glovebox	●	●	●	●
Travel Package: auto-dimming interior rear-view mirror with outside temperature and compass display, driver and passenger map lights	—	○	○	—
Warning chimes for headlamps on, key in ignition, low fuel, parking brake on and turn signal left on	●	●	●	●
Safety and Security				
Anti-lock brakes with Traction Control ⁴	○	○	●	●
Automatic Light Control	—	—	●	—
Battery run-down protection for interior and cargo area lighting	●	●	●	●
Daytime running lamps	●	●	●	●
Dual-stage driver and front passenger air bags with Passenger Sensing System ^{4,5}	●	●	●	●
Engine-immobilizing theft-deterrent feature	●	●	●	●
Fog lamps	—	—	●	●
Front safety belts with pretensioners and energy-absorbing retractors	●	●	●	●
Head Curtain Side Air Bags ⁵	○	○	○	○
Lower Anchorages and Top Tethers for Children (LATCH) in rear seating positions	●	●	●	●
OnStar [®] System with one-year Safe & Sound Service Plan ⁶ (Part of Technology Package)	—	○	○	—
Secure trunk feature with locking seat backs, trunk release disable and emergency trunk release handle	●	●	●	●
Entertainment Systems				
CD player with AM/FM stereo, standard auxiliary input jack and four extended-range speakers	●	●	—	—
CD/MP3 player with AM/FM stereo, standard auxiliary input jack, speed-compensated volume and four coaxial speakers	—	○	●	●
Saturn Advanced Audio System: 160-watt external amplifier and six premium speakers ^{3,7}	—	○	○	○
Single in-dash CD/MP3 player with AM/FM stereo, standard auxiliary input jack, speed-compensated volume and four coaxial speakers	—	○	○	○

● = standard ○ = available — = not available

¹Cargo and load capacity limited by weight and distribution. ²Based on GM testing. EPA estimates not yet available. ³Requires Convenience Package. ⁴Traction Control and Passenger Sensing System not available on Red Line. ⁵See inside back cover for important information about air bags, including a note about child safety. ⁶See inside back cover for important information about OnStar. ⁷Requires CD / MP3 player.

Featured Equipment



Rear theatre seating. Why should front seat people have all the fun? Rear theatre seating in the ION sedan is raised by more than an inch, so everyone has a good view.



Lots of trunk space. The ION comes with a generous amount of cargo volume: 416 litres (14.7 cu. ft.) for the sedan, 401 litres (14.2 cu. ft.) for the Quad Coupe.¹ Suddenly, the question isn't what fits—it's what doesn't.



Polymer side panels. Because every new car owner lives in fear of that first dent or ding, the ION's side panels are made of a material that resists them.



LCD message centre. The ION tells you what's on its mind, like when the trunk is ajar, the coolant level is low, or it's time to change the oil.



60/40-split folding rear seat backs. The ION's split folding rear seat backs give you extra flexibility for simultaneously carrying both cargo and passengers.

¹Cargo and load capacity limited by weight and distribution.



Dual 12-volt power outlets. Charge up your MP3 player or your laptop or your phone with the ION's handy power outlets.

Available Equipment



Power sunroof. For sunny days or times when you just need to see the sky. Requires Convenience Package.



Single in-dash CD/MP3 player. Comes with AM/FM radio, speed-compensated volume, auxiliary input jack and four coaxial speakers.



Remote keyless entry. Part of the Convenience Package, which also includes power windows, power exterior mirrors, and cruise control. Standard on ION•2, ION•3 and Red Line. Not available on ION•1.



Auto-dimming rear-view mirror. In addition to dimming for better visibility, this electro-chromatic mirror includes a temperature and compass display. Part of the Travel Package. Not available on ION•1 and Red Line Coupe.



Leather Package. Smooth, supple and easy to clean. Includes leather-trimmed seats, steering wheel and gearshift knob. Available on ION•3 only.



Rear spoiler. Give people an even better view when you fly past them on the highway. Standard on ION•3

Accessories



Sport pedal covers. Identify yourself as a driver's driver, with these gleaming brushed metal foot pedals with rubber grip pads. Available for both manual and automatic models.



Splash guards. Keep your tires from splattering mud, salt, pebbles and other road rubble onto the sides of your ION.



Wheel locks. Keep your ION's wheels where they belong: on your ION, instead of in thieves' hands.



Sunroof wind deflector. Maximize the sun while minimizing the wind's hair-mussing tendencies.



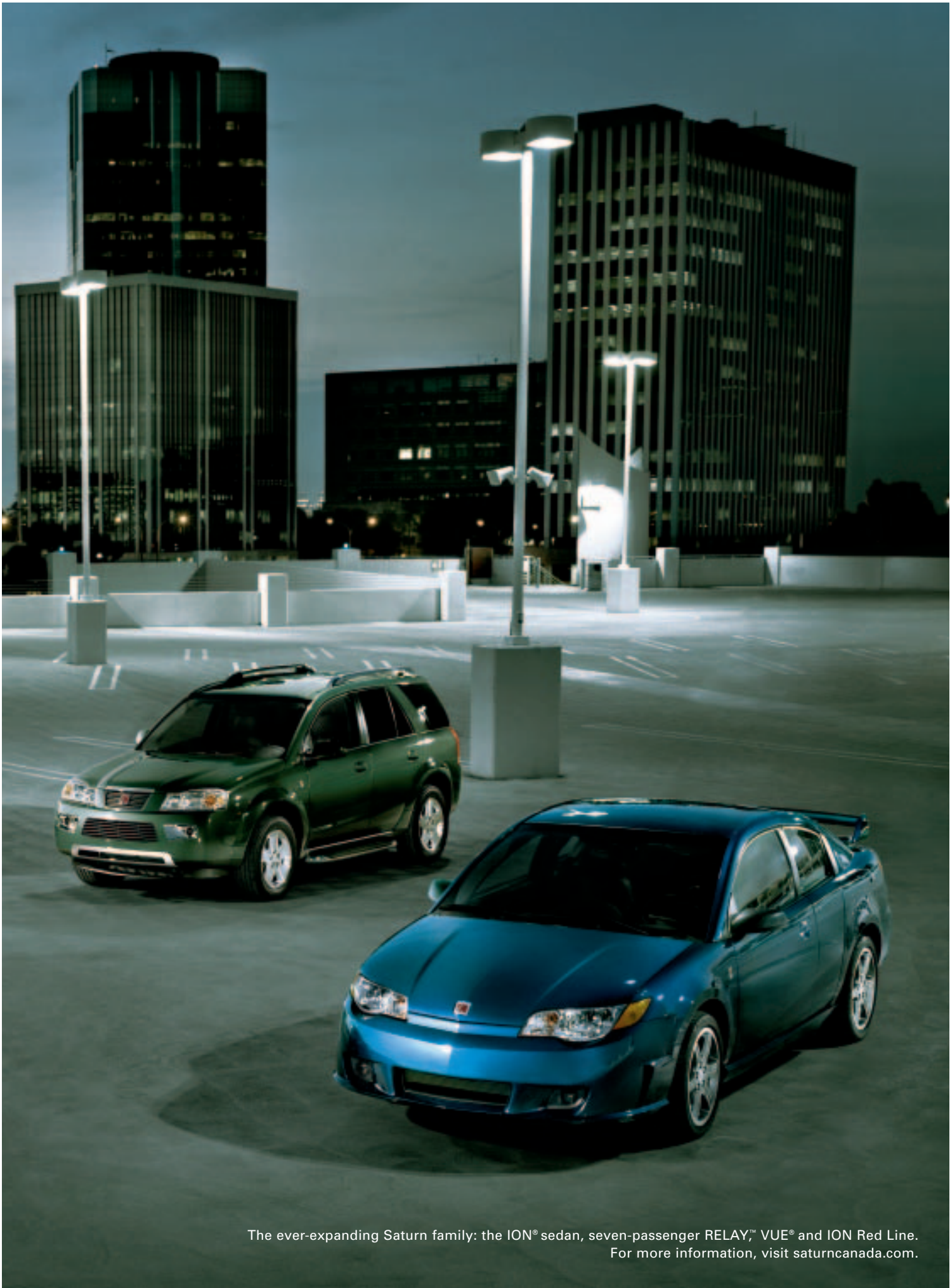
Cargo net. Some things have a tendency to wander around your trunk. The cargo net keeps them safely stowed and in place.



Roof rack. Keep wet, muddy cargo out of your ION's interior cargo areas. Available with a number of attachments.







What makes a Saturn a Saturn?

It's more than you can see in a picture or read on a page.

What makes Saturn different can only be experienced.

It's being with you today, tomorrow and for the next 200,000 kilometres.

It's about a no-hassle experience.

It's about giving you thirty days to change your mind.¹

It's about making sure you love what you drive.

In other words, it's about you.



¹See inside back cover for details about Saturn's 30-day Vehicle Exchange Program.



It all started with the very first Saturn. How do you design a car people will dream about? How do you build a car people will love? Finding the answer, year after year, is what keeps us going. And this year, we've been especially busy designing a whole new generation of vehicles that will re-establish what it means to own, love and drive a Saturn. In 2006, you'll meet the SKY™ roadster, followed by a continuing stream of surprises. In every vehicle, you'll see even more sculptural lines, glowing interiors, advanced features, and soulful expressions of Saturn's philosophy of putting people first. In other words, the next few years are going to be big. And, as always, it's going to be a fun ride.

The vehicle shown is a pre-production model; the actual production model may vary.



Important words about this brochure

We have tried to make this brochure comprehensive and factual. We reserve the right, however, to make changes at any time, without notice, in prices, colours, materials, equipment, specifications, models and availability. Specifications, dimensions, measurements, ratings and other numbers in this brochure and other printed materials provided at the Retailer or affixed to vehicles are approximates based upon design and engineering drawings and prototypes and laboratory tests. Your vehicle may differ due to variations in manufacture and equipment. Since some information may have been updated since the time of printing, please check with your Saturn Retailer for complete details. Saturn reserves the right to lengthen or shorten the model year for any product for any reason, or to start and end model years at different times.

A note about air bags and child safety

Always use safety belts and proper child restraints. Even in vehicles equipped with air bags and the Passenger Sensing System, children are safer when properly secured in a rear seat. Never place a rear-facing infant restraint in the front seat of any vehicle equipped with an active air bag. Air bag inflation can cause severe injury or death to anyone too close to the bag when it deploys. Be sure every occupant is properly restrained. See your vehicle's Owner's Handbook and child-safety seat instructions for more information.

OnStar® information

OnStar services require vehicle electrical system (including battery), wireless service, and GPS satellite signals to be available and operating for features to function properly. OnStar acts as a link to existing emergency service providers. Subscription Service Agreement required. Due to the transition of the wireless industry from analogue to digital technology, as of January 1, 2008, OnStar plans to offer service only through equipment that operates on the digital network, which may require the purchase of a system upgrade for eligible vehicles. Call 1-888-4-ONSTAR (1-888-466-7827) or visit onstar.ca for OnStar's Terms and Conditions, Privacy Policy, and system limitations and details.

Important information about the ION's safety rating

Testing conducted by the US National Highway Traffic Safety Administration (NHTSA) on four-door 2006 Saturn ION for front driver and passenger, side front seat and side rear seat impact. The government star rating is part of the NHTSA New Car Assessment Program (NCAP). Visit safercar.gov for details.

Saturn's Vehicle Exchange Program

Within the first 30 days or 2,500 kilometres of delivery, whichever comes first, the original purchaser may exchange his or her Saturn vehicle if not completely satisfied. In the event that an owner returns his or her vehicle, he or she will exchange it for another 2006 Saturn vehicle. See Retailer for limitations and restrictions. All the same factory-supported initiatives will be included on the exchange vehicle that were on the original vehicle. The vehicle must be returned in the condition in which it was delivered, without damage or excessive wear and tear. If non-warranty repairs equal to or greater than \$500 have been performed or are necessary, the vehicle is not eligible to be returned. If less than \$500, the damage must be repaired or the estimate deducted from the credit toward the exchange vehicle.

New Vehicle Limited Warranty

Covered for 3 years/60,000 kilometres (whichever comes first): the complete vehicle, tires, towing to your nearest Saturn Retailer, repairs made to correct any vehicle defect, with no charge for most warranty repairs.

An important note about alterations and warranties

Installations or alterations to the original equipment vehicle (or chassis) as distributed by General Motors are not covered by the General Motors New Vehicle Limited Warranty. The special body company, assembler, equipment installer or upfitter is solely responsible for warranties on the body or equipment and any alterations (or any effect of the alterations) to any of the parts, components, systems or assemblies installed by GM. General Motors is not responsible for the safety or quality of design features, materials, or workmanship of any alterations by such suppliers.

Assembly

Saturn vehicles and their components are assembled or produced by different operating units of General Motors, its subsidiaries or suppliers to GM worldwide. We sometimes find it necessary to produce Saturn vehicles with different or differently sourced components than originally scheduled. Since some options may be unavailable when your vehicle is assembled, we suggest that you verify that your vehicle includes the equipment you ordered, or, if there are changes, that they are acceptable to you.

Engines

Saturn products are equipped with engines produced by GM Powertrain or other suppliers to GM worldwide. The engines in Saturn products may also be used in other GM makes and models.

Updated service information

Saturn Retailers receive useful service bulletins about Saturn products. See your Retailer for more information or visit www.saturncanada.com

*The 2006 vehicle's powertrain components are covered by a limited Special Powertrain Component Coverage for up to 5 years or 100,000 km, whichever comes first.

†Within the first 30 days or 2,500 km of delivery, whichever comes first. ††See Retailer or visit saturncanada.com for limitations, restrictions and coverages.

Quiet Steel is a registered trademark of Material Sciences Corporation. OnStar is a registered trademark of OnStar Corporation.

©2005 Saturn Corporation. Saturn and its logo are registered trademarks of Saturn Corporation.

There's something we'd like to say. And that is: Yes. Yes to horsepower and acceleration, hairpin turns and outpacing your shadow. Yes to features that embrace technology and designs that stop people in their tracks. Yes to big wheels and polished chrome. Yes to starting lines and finish lines and everywhere in between. Yes to making memories and swapping stories. Yes to feeling protected. Yes to everything we love about driving. Yes to the 2006 Saturn ION.



SATURN

saturncanada.com

123-06-B-001E