



PORSCHE



Tequipment Panamera

Accessories for the new Panamera models

Tequipment

The 4th dimension.

Personalization included.

The new Panamera. Four doors. Four seats. This car challenges the conventions of premium-class sedans, and offers more than just mundane, soft seats. In other words, luxury needn't mean cumbersome. Let's call it "dynamic luxury." It's about journeys, in a sports car for four. It isn't about the destination, but how you get there. It's about the pure driving experience, regardless of whether you sit in the front or the back. What sets the Panamera apart? Plenty of flexible space combined with sports-car technology.

Technology is what inspires Porsche Tequipment products. Refined to the very last detail, these model-specific accessories have been developed to enable you to customize your vehicle.

Each and every component has been developed with the overall vehicle in mind. Not only does each component have to be visually appealing—it also has to be technically compatible. Indeed, they are all drafted in the same way as our vehicles: by the pens of our engineers and designers.

Tequipment components are created in the Porsche Development Center in Weissach, from design through to launch. Every product undergoes exhaustive testing throughout its development to ensure optimal performance and durability. Also to make sure it meets stringent Porsche quality guidelines and standards.

Aesthetics are just as important. Among the highlights is our Yachting Mahogany wood interior, inspired by the elegant materials used in yacht construction. A stylish contrast to this dark, fine wood is achieved using lighter maple wood inlays for incomparable maritime flair. As individual as your Porsche.

Whichever Tequipment products you select, one thing remains unchanged: your original Porsche vehicle warranty.

You can find out more about the Porsche Tequipment line of accessories at your Porsche dealer or by visiting **www.porsche.com**.



Design drawing: Yachting Mahogany wood interior



Material selection: Yachting Mahogany wood



Panamera 4S with Yachting Mahogany wood interior



Contents

Wheels

From complete wheel sets featuring summer or winter tires to wheel accessories, everything is perfectly matched to your vehicle.

5 Interior

Options for personalizing the interior. Classic elegance to high-tech performance.

13



Audio and communication

With these products, you can turn your Panamera into a mobile communications center.

25 Transport and car care

Intelligent transport solutions, Porsche child seats and care products for your car.

29 Service

This page provides a brief insight into the world of Porsche.

Index

43

45



Wheels

Make the road feel special.



The wheels of the Panamera all have one thing in common: classic sports-car design. Fine-spoked and lightweight, the wheels range

in size from 18 to 20 inches. Their light-alloy construction reduces unsprung masses and allows a direct glimpse of the Porsche

brake system. Another example of performance styling that promises to provide even more driving pleasure.



20-inch 911 Turbo II Design wheels with summer tires

20-inch 911 Turbo II Design wheels with summer tires

This set of wheels with summer tires is both powerful and dynamic. The fine-spoked design of the forged alloy wheels with a two-tone finish is the epitome of individuality on the road.

20-inch RS Spyder Design wheels with summer or winter tires

This design takes its cues from the wheels that adorned the successful Porsche RS Spyder race car. The prominent features of these sporty, lightweight forged aluminum wheels are the seven U-shaped dual-arm spokes and the polished wheel rim. Wheels come with a choice of summer or winter tires.

19-inch Panamera Turbo wheels with summer or winter tires

Uncompromisingly sporty and designed for supreme performance. Harmonious down to the very last detail. These alloy wheels with five dual-arm spokes allow a direct glimpse of the Porsche brakes. Wheels come with a choice of summer or winter tires.

19-inch Panamera Design wheels with summer tires

These alloy wheels may be perfect for everyday use, but they are anything but ordinary. Their styling is as unique as that of the Panamera itself. Five intricate V-shaped spokes give these wheels a supremely elegant look.

18-inch Panamera S wheels with winter tires

These sporty classic wheels are characterized by their strong grip and unique styling. Just the perfect addition to your Panamera during winter.

Not compatible with the Panamera Turbo.

For further product information and part numbers, contact your Porsche dealer.

See pages 9 and 10 for wheel and tire specifications.



20-inch RS Spyder Design wheels with summer or winter tires



19-inch Panamera Turbo wheels with summer or winter tires



19-inch Panamera Design wheels with summer tires



18-inch Panamera S wheels with winter tires

Note on the use of winter tires

Summer tires provide optimal performance at ambient temperatures above 44°F.

Below this point, the tire compound begins to harden, and braking distances are increased. We therefore recommend that you fit winter tires during the colder months of the year. Only then can you enjoy the highest standards of active safety from your Panamera. All winter tires approved by Porsche are identified by an “N” designation on the sidewall.

- Compatible with vehicle.
- Not compatible with vehicle.
- ¹ Winter tires to a maximum of 149 mph.
- ² Compatible with snow chains.
- ³ Not compatible with Porsche Ceramic Composite Brake (PCCB).
- ⁴ Standard on Panamera Turbo.

For recommended wheel and tire choices, please consult your Porsche dealer.

Note: Wheel center caps are not included.

The above tire options, i.e., those featuring NO, N1 specifications, etc., are exclusively designed for Porsche. These are the only tires recommended by Porsche.

| | Panamera S | Panamera 4S | Panamera Turbo |
|---|----------------------|----------------------|----------------------|
|  | ■ | ■ | ■ |
|  | ■ | ■ | ■ |
|  | ■ | ■ | ■ ^{3, 4} |
|  | ■ | ■ | ■ ³ |
|  | ■ ^{1, 2} | ■ ^{1, 2} | ■ ^{1, 2} |
|  | ■ ^{1, 2} | ■ ^{1, 2} | ■ ^{1, 2, 3} |
|  | ■ ^{1, 2, 3} | ■ ^{1, 2, 3} | – |

| Wheel/tire set | Wheel dimensions (ET = offset in mm) | Tire specifications |
|--|--|---|
| 20-inch 911 Turbo II Design wheels with summer tires Part No. 970 044 602 08 | Front: 9.5J x 20 ET 65 Rear: 11J x 20 ET 68 | Front: 255/40 ZR 20 (101 Y) XL Rear: 295/35 ZR 20 (105 Y) XL |
| 20-inch RS Spyder Design wheels with summer tires Part No. 970 044 602 06 | Front: 9.5J x 20 ET 65 Rear: 11J x 20 ET 68 | Front: 255/40 ZR 20 (101 Y) XL Rear: 295/35 ZR 20 (101 Y) XL |
| 19-inch Panamera Turbo wheels with summer tires Part No. 970 044 602 02 | Front: 9J x 19 ET 60 Rear: 10J x 19 ET 61 | Front: 255/45 ZR 19 (100 Y) Rear: 285/40 ZR 19 (103 Y) |
| 19-inch Panamera Design wheels with summer tires Part No. 970 044 602 04 | Front: 9J x 19 ET 60 Rear: 10J x 19 ET 61 | Front: 255/45 ZR 19 (100 Y) Rear: 285/40 ZR 19 (103 Y) |
| 20-inch RS Spyder Design wheels with winter tires Part No. 970 044 600 06 | Front: 9.5J x 20 ET 65 Rear: 10.5J x 20 ET 65 | Front: 255/40 R 20 (101 V) XL Rear: 285/35 R 20 (104 V) XL |
| 19-inch Panamera Turbo wheels with winter tires Part No. 970 044 600 04 | Front: 9J x 19 ET 60 Rear: 10J x 19 ET 61 | Front: 255/45 R 19 (100 V) Rear: 285/40 R 19 (103 V) |
| 18-inch Panamera S wheels with winter tires Part No. 970 044 600 02 | Front: 8J x 18 ET 59 Rear: 9J x 18 ET 53 | Front: 245/50 R 18 (100 V) Rear: 275/45 R 18 (103 V) |



Snow chains

Snow chains

Specially designed for Porsche models, and featuring ultra-fine links for minimal adhesion of ice and snow.

Snow chains for tire size 275/45 R 18:
Part No. 970 044 600 09
Not compatible with the Panamera Turbo.

Snow chains for tire sizes
285/40 R 19 and 285/35 R 20:
Part No. 970 044 600 10

Not compatible with wheel spacers.
Permitted on rear wheels only.

Wheel center caps

Set of wheel center caps with full-color Porsche Crest. The perfect finishing touch for any Panamera wheel.

Set of four: Part No. 955 044 600 10

Not compatible with the 20-inch 911 Turbo II Design wheel.

Crested valve-stem caps

Silver-colored valve caps with embossed Porsche Crest.

Part No. 000 044 602 15



Wheel center caps



Crested valve-stem caps



Interior

Sports car and comfort. An oxymoron?

Not in the Panamera.



The new Panamera offers an excellent combination of performance, comfort, flexibility and personal freedom.

Freedom, for example, to customize the interior. After all, the Porsche of your dreams has

never been so within your reach. How about creating a little more individuality by selecting the Yachting Mahogany or Natural Olive wood interior? Or even one of our other high-quality materials such as Carbon Fiber or Brushed Aluminum? Each material is

available as part of our Tequipment interior packages.

Give your Panamera its own unique character. Even more sporty, even more exclusive? The choice is yours. The following pages will give you all the inspiration you need.



Brushed Aluminum interior package

Burr Walnut

A classic, high-quality dark wood with a unique and appealing grain.

Not compatible with Panamera Turbo.

Tineo

This light, reddish-brown hardwood from the South American Andes creates a very elegant look, thanks to its striking horizontal grain.

Anthracite Birch

This anthracite-colored birch wood has an attractive wavy grain, an impressive dual-tone effect and a satin sheen.

Natural Olive

A high-quality ash wood with an olive grain and a satin matte sheen, giving a combination of elegance, individuality and luxury.

Yachting Mahogany

Inspired by the construction of exclusive yachts, mahogany is a fine, dark wood. Light maple inserts provide a stylish contrast.

Carbon Fiber

Carbon Fiber is a light but highly durable material which has its origins in motorsport. Its high-tech look gives a performance feel to the interior.

Aluminum

Aluminum—brushed or high-gloss—is a lightweight alloy which accentuates the finer details of your Panamera.



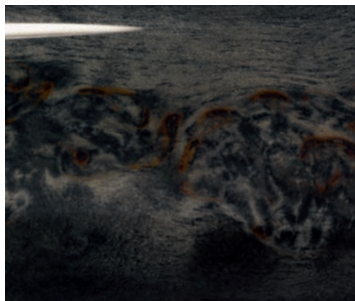
Burr Walnut



Tineo

Alcantara®

This high-quality material is easy to care for, washable and has excellent nonslip properties.



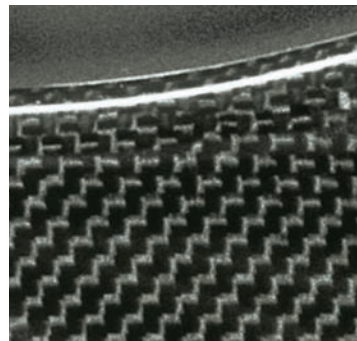
Anthracite Birch



Natural Olive



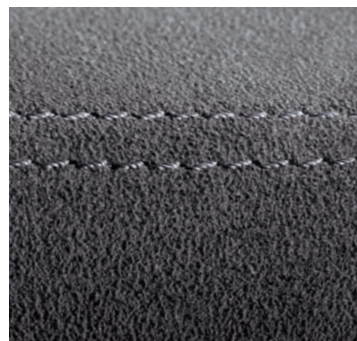
Yachting Mahogany



Carbon Fiber



Brushed Aluminum



Alcantara®

Since wood is a natural product, there may be variations in color and grain.



Interior in Carbon Fiber

Interior packages

Would you like to make your Panamera even more individual, even more refined, or even sportier? Our range of interior packages enables you to choose the finish you would like for selected interior features, which include the dashboard decorative trim, the decorative trims on the doors, the center console lower section, the decorative plate, the

front ashtray cover, the cupholder cover in the rear, and the storage compartment lid on the rear center console. Packages are available in Burr Walnut, Tineo, Anthracite Birch, Natural Olive, Yachting Mahogany, Carbon Fiber or Brushed Aluminum.

Extended trim package

The extended trim package creates an outstanding effect when combined with one of our interior packages, but is equally attractive on its own. The extended trim package includes the PDK gear selector and the multifunction steering-wheel rim in Aluminum (not including airbag module). The multifunction steering-wheel rim is available



Interior in Yachting Mahogany

in Burr Walnut, Tineo, Anthracite
Birch, Yachting Mahogany or
Carbon Fiber.

For further information and part numbers,
please contact your Porsche dealer.



Extended trim package in Carbon Fiber



Cooling compartment in the rear

Cooling compartment in the rear

The cooling compartment integrated between the individual seats in the rear has a capacity of 10.5 liters and features a separate on/off switch. It chills to a temperature of approximately 43°F. Two drinking glasses featuring an engraved Porsche Crest and logo are included. The cooling compartment is accessible through the opening in the large rear center console, located between the seats.

Part No. 970 044 000 00 + color code

Only available for vehicles with large center console in the rear.

Not compatible with the reversible cargo mat, the luggage net or the cargo liner.

Cooling compartment reduces luggage compartment capacity.

PDK gear selector in Aluminum

The specially designed PDK gear selector has Aluminum inlays and features a leather trim in the interior color.

Part No. 9G1 426 980 00 + color code

PDK gear selector in Alcantara®

This gear selector highlights Porsche's close association with motorsport. Finished in black Alcantara.®

Part No. 970 426 990 00 A15



PDK gear selector in Aluminum



PDK gear selector in Alcantara®



Reversible velour cargo mat

Reversible velour cargo mat

This reversible mat with loading-edge protection shields the luggage compartment from dirt and protects the vehicle exterior from scratches during loading. One side is trimmed in velour in the interior color; the other side features a hard-wearing, nonslip rubber surface.

Part No. 970 044 800 02 + color code

Not available in conjunction with cooling compartment in the rear.

Velour floor mats

Precision down to the last detail: four made-to-measure floor mats with nubuck edging and Porsche logo, which have a waterproof backing and are nonslip. Mats are anchored with a securing system.

Part No. 970 551 063 00 + color code

Rubber floor mats

Four made-to-measure floor mats in an appealing design featuring the Panamera silhouette. Nonslip and waterproof.

Part No. 970 044 800 00

Sunshade

Protects against direct sunlight and at the same time provides additional privacy. Attaches to the rear screen by a system of clips.

For vehicles with rear wiper:
Part No. 970 044 000 26

For vehicles without rear wiper:
Part No. 970 044 000 25



Velour floor mats



Rubber floor mats



Door-entry guards in Carbon Fiber

Door-entry guards

For a sporty and striking effect, illuminated or non-illuminated door-entry guards provide a stylish and dramatic finishing touch. Those featuring a white illuminated model logo are a special highlight. Fitted front

and rear, the door-entry guards are available in either Carbon Fiber, a material reminiscent of the racetrack, or Brushed Aluminum, a durable material with a classy look.

Available with "Panamera S," "Panamera 4S" or "turbo" logo.

Aluminum, illuminated
Part No. 970 044 800 27 Panamera S logo
Part No. 970 044 800 28 Panamera 4S logo
Part No. 970 044 800 29 turbo logo

Carbon Fiber
Part No. 970 044 800 22 Panamera S logo
Part No. 970 044 800 23 Panamera 4S logo
Part No. 970 044 800 24 turbo logo



Door-entry guards in Carbon Fiber, illuminated

Carbon Fiber, illuminated
 Part No. 970 044 800 32 Panamera S logo
 Part No. 970 044 800 33 Panamera 4S logo
 Part No. 970 044 800 34 turbo logo



Door-entry guards in Brushed Aluminum, illuminated



Audio and communication

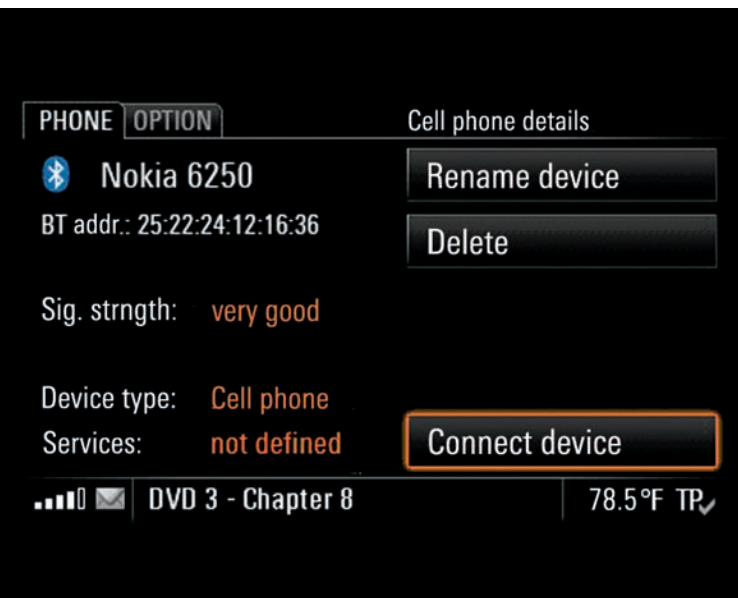
What's the best thing about finding something you want?

When you don't even have to look.



Comfort and sports-car technology side by side. For many, this may be surprising. For you, it's simply Porsche. This also applies to our

communication systems: cutting-edge technologies with intuitive controls. Multifunctional, and customizable.



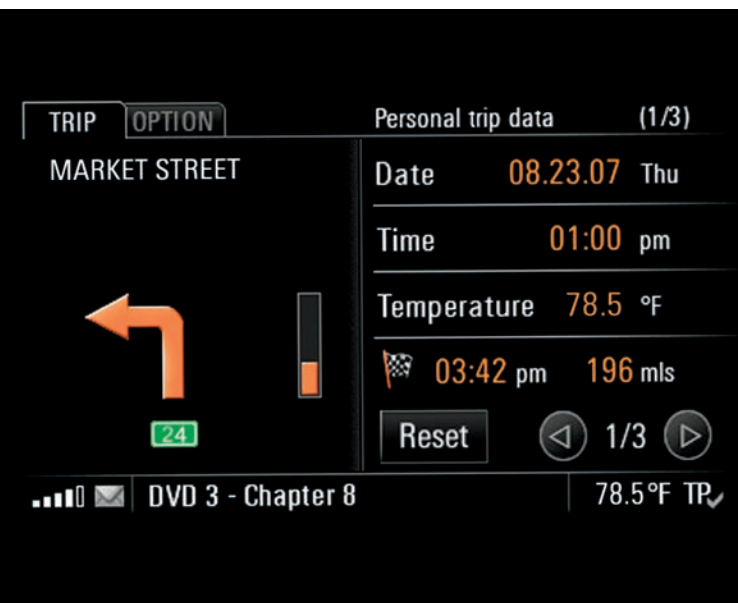
Bluetooth® Hands-Free Phone Interface

Bluetooth® Hands-Free Phone Interface

To enable a Bluetooth® connection for those mobile phones that support the Hands-Free Profile (HFP), an optional mobile phone interface is available. With HFP, PCM acts as a hands-free system. The Porsche Communication Management (PCM) system can be used to control the functions of the mobile phone. The GSM connection is established through the mobile phone's antenna.

Part No. 970 044 900 32

For further product information, please contact your Porsche dealer.



Electronic logbook

Electronic logbook

The optional electronic logbook enables automatic recording of mileage, route distance, time and date, starting point and destination as part of every journey. Once you have downloaded the logbooks from PCM via the USB or Bluetooth® interface, you can evaluate the data on your home PC using the software supplied.

Part No. 955 044 900 29

Requires PCM.



Universal audio interface

Universal audio interface

The Universal audio interface allows PCM, an AUX port, a USB interface and a separate iPod® connection to be integrated into the center console armrest. PCM is required. With this interface, your iPod®, MP3 player or USB stick connected to the USB interface can be operated using the PCM system.

Part No. 970 044 900 34

Requires PCM.



Transport and car care

The Panamera has space for four.

Luggage included.

Not only on the inside.



Four adults and their luggage in a sports car? Yes, it is possible in the new Panamera.

The interior of the Panamera offers occupants plenty of space and comfort. For children, we have a range of optional Porsche child seats.

Our Roof Transport Systems ensure that even bulky items of luggage can be accommodated. A rear-mounted bike carrier is also available.

The cargo liner shields the luggage compartment from dirt.

The luggage net holds items safely in position. A car cover protects the exterior of your vehicle. We also offer a range of car-care products so that your Panamera always makes an excellent impression.



Child seats

Traveling in a Porsche is not just for grown-ups. With Porsche Tequipment child seats, it's for the little ones, too. Now passengers below the age of 12 need never miss out.

Porsche child seats

Porsche child seats come in a new design, meeting the latest safety standards. Specially tested and approved for Porsche cars, they provide protection and

comfort for passengers up to 12 years of age. The fabrics are breathable and easy to clean, with a removable and washable cover in black and grey with a contrasting red trim. These

| Child seats for Panamera | Models | Group | Weight | Age | Panamera front | Panamera rear |
|--|--|-------|-------------|----------------------------------|----------------|---------------|
|  | Porsche Baby Seat LATCH Part No. 955 044 802 87 | 0+ | 0–26 lbs. | Up to approx. 18 months | No | Yes |
|  | Porsche Junior Seat LATCH Part No. 955 044 802 89 | 1 | 20–55 lbs. | From approx. 9 months to 7 years | No | Yes |
|  | Porsche Junior Plus Seat Part No. 955 044 802 91 | 2+3 | 37–100 lbs. | From approx. 3½ to 12 years | No | Yes |

Porsche child seats can be fitted quickly, easily and securely. Child passengers up to the age of 12 travel in safety with maximum comfort and freedom of movement. The rear seats in all Panamera

models are equipped with LATCH anchors as standard. Alternatively, all Porsche child seats can be secured using the standard three-point seat belts.

Please see your authorized Porsche dealer for information on child-seat availability and specific applications.

Note: To avoid risk of injury or death from a deploying airbag, never place a child age 12 or under in a front seating position.



Roof Transport System

Transport

Roof Transport System

Versatile base carrier offering maximum roof load of up to 154 pounds. Compatible with a wide range of load-carrying attachments. Includes anti-theft security caps and locks.

Part No. 970 801 111 00

Rear hatch opening may be partially reduced when carrying longer roof loads.

Bike carrier

Lockable carrier for standard adult and child bikes up to a maximum frame-tube diameter of approximately 3.3 inches. Up to three bike carriers can be mounted on the Roof Transport System.

Part No. 955 044 002 66

Roof box (narrow)

Lockable plastic roof box in Silver Grey with a capacity of approximately 10.9 cubic feet (310 liters). Also includes integrated ski holder. Can be opened from either side of the vehicle. Dimensions:

L 89" x W 22" x H 15"

Part No. 955 044 000 47



Bike carrier



Roof box (narrow)

Roof box (wide)

Lockable plastic roof box in a black high-gloss finish with a capacity of approximately 18.4 cubic feet (520 liters). Also includes integrated ski holder. Can be opened from either side of vehicle. Dimensions:

L 86" x W 35" x H 16"

Part No. 955 044 002 12



Roof box (wide)



Ski/snowboard carrier

Ski/snowboard carrier

Two versions are available: one for up to four pairs of skis, or up to two snowboards; and one for up to six pairs of skis, or up to four snowboards.

Wide:
Part No. 955 044 000 24

Narrow:
Part No. 955 044 000 23

Surfboard carrier

This carrier transports a board and mast to the awaiting surf.

Part No. 955 044 000 07

Boat carrier

Mounting system for the safe transport of a boat.

Part No. 955 044 000 05

Not suitable for inflatable boats.



Surfboard carrier



Boat carrier



Outdoor car cover

Outdoor car cover

Tailored outdoor cover in silver-colored fabric with Porsche Crest and logo. Water-repellent and breathable, it provides excellent protection against a range of weather conditions, including strong sunlight. Includes anti-theft protection.

Part No. 970 044 000 31

Indoor car cover

Tailored indoor cover made from breathable and antistatic fabric. With full-color Porsche Crest and logo.

Part No. 970 044 000 30

Luggage net

Floor net for holding items in the luggage compartment safely in

position. The easy-to-use net is attached to the lashing eyelets on the luggage compartment floor by four integral hooks. The net's highly elastic material enables you to vary its tensioning force.

Part No. 970 044 000 20

Not available in combination with cooling compartment in the rear.

Cool box

Handy cool box for chilling food and drinks. Features a 12-volt connection and a capacity of 12 liters. Porsche-patented securing system for safe transport. Features deep-discharge protection for the car battery.

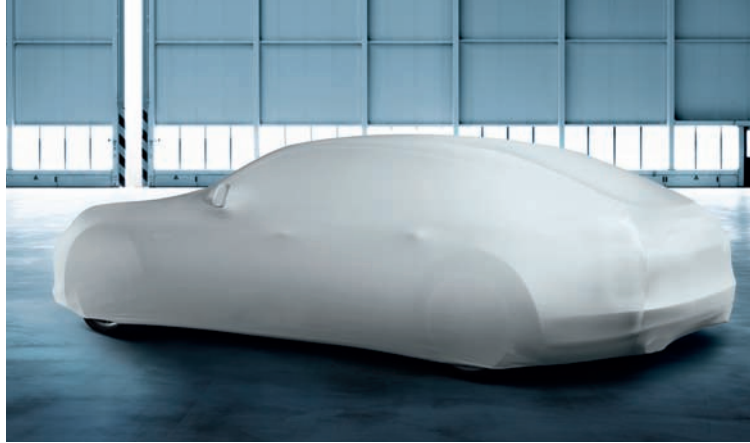
Part No. 955 044 902 30

Cargo liner (not shown)

Waterproof and washable, this made-to-measure liner in black plastic protects the luggage compartment from dirt. Ideal for shopping trips or transporting sports equipment.

Part No. 970 044 000 15

Not available in combination with cooling compartment in the rear.



Indoor car cover



Luggage net



Cool box



Wheel-cleaning kit

Wheel-cleaning kit

Care products and brush set for alloy wheels. Cleaning fluid also available separately as a refill.

Part No. 000 044 000 86

Porsche Charge-O-Mat II

Battery charger with charge maintenance and a monitoring function. An adapter is available

for vehicles without a cigarette lighter.

Part No. 955 044 900 54

Car-care case

Aluminum case containing high-quality car-care products approved for your Porsche. Includes shampoo, wax, glass cleaner, leather cleaner and

conditioner. All products are also available separately.

Part No. 000 044 000 89

Ice scraper

Practical accessory featuring an aluminum telescopic handle which enables easy removal of ice and snow from your Porsche. Integral rubber lip for removing water.

Part No. 955 044 000 02

Interior care kit

Contains cleaning products and accessories, including velour cleaner, leather cleaner and conditioner, and glass cleaner.

Part No. 955 044 900 81

Rechargeable flashlight

Handy flashlight with fold-out magnifying lens. Rechargeable via the cigarette lighter.

Part No. 000 044 900 79

Tool kit

Selection of tools for home and car use in high-quality leather case.

Part No. 955 044 000 01

Microfiber cleaning cloths (not shown)

Set of three microfiber cloths enabling the PCM touchscreen and other delicate interior surfaces to be cleaned safely and efficiently.

Part No. 00 044 000 95



Porsche Charge-O-Mat II



Car-care case



Ice scraper



Interior care kit



Rechargeable flashlight



Tool kit

Color codes

Leather colors: Extended trim packages

| Color | Color Code |
|------------------|------------|
| Black | DLC |
| Yachting Blue | 6U7 |
| Platinum Grey | 7A0 |
| Natural Espresso | 8C0 |
| Natural Cognac | 9EF |
| Luxor Beige | 9H6 |

Colors: Cooling compartment in the rear

| Color | Color Code |
|---------------|------------|
| Black | DK4 |
| Yachting Blue | DQ9 |
| Platinum Grey | DJ6 |
| Espresso | DP8 |
| Cognac | DS1 |
| Luxor Beige | DM5 |

Leather colors: PDK gear selector in Aluminum

| Color | Color Code |
|------------------|------------|
| Black | DLC |
| Yachting Blue | 6U7 |
| Platinum Grey | 7A0 |
| Natural Espresso | 8C0 |
| Natural Cognac | 9EF |
| Luxor Beige | 9H6 |

Colors: Reversible velour cargo mat and velour floor mats

| Color | Color Code |
|---------------|------------|
| Black | DK4 |
| Yachting Blue | DQ9 |
| Platinum Grey | DJ6 |
| Espresso | DP8 |
| Cognac | DS1 |
| Luxor Beige | DM5 |



Porsche Tourist Delivery

Imagine touring the original factory and then being handed the keys for an even more gratifying opportunity: touring Europe in your brand-new Porsche. What happens next is up to you. Contact your local Porsche dealer for more information.



Porsche Assistance

Your ownership experience is enhanced with complimentary enrollment in the Porsche 24-hour Roadside Assistance program. It includes coverage 24 hours a day, 365 days a year, for the duration of your warranty. Contact your Porsche dealer for specifics.



Porsche Financial Services

Competitive, convenient and carefully crafted financing options can be customized to meet your needs. Ask your certified Porsche Sales Consultant for details.

Service

Porsche Approved Pre-Owned

Porsche Approved is the simple way to find the perfect pre-owned Porsche, anywhere in the world. Every car is rigorously tested and comes with a 2-year or 50,000-mile limited vehicle warranty. Contact your Porsche dealer for details.



Porsche Classic

Your specialist source for genuine Porsche parts and technical documentation as well as servicing, repair and restoration for all types of classic Porsches. For more information, visit [**porscheusa.com/classic**](http://porscheusa.com/classic).



Christophorus

Our bimonthly magazine for Porsche owners is packed with news, articles and exclusive interviews covering every aspect of Porsche automobiles and the Porsche lifestyle.





Porsche Exclusive

Realize your vision of the perfect Porsche with our factory customization program. From styling enhancements to performance upgrades, all modifications are uniquely handcrafted for your Porsche.



Tequipment Online

You've already taken delivery of your Porsche. Are you now thinking of giving it a personal touch? Our Tequipment range of accessories is also available online at **www.porsche.com**.



Porsche Design Driver's Selection

Our distinctive collection of clothing and accessories combines timeless elegance with unmistakable quality. Visit your local Porsche dealer or shop online at **porsche.com/shop**.



Porsche Online

For all the latest news and information from Porsche, go to **www.porsche.com**.

Porsche Clubs

With more than 120,000 members worldwide in 60 countries, know you are not alone in your passion for Porsche. Learn more about the brand and meet other Porsche enthusiasts just like yourself. Visit **porsche.com** for more information.



Porsche Driving Experience

1. Porsche Travel Club.

Exclusive driving holidays and incentive ideas combining luxury and adventure, worldwide. To find out more, contact us by e-mail at **travel.club@porsche.us**.



2. Porsche Sport Driving School.

Develop your skill and explore your Porsche with the Porsche Sport Driving School. Learn firsthand from famed Porsche Racing drivers while they teach you at a world-class racing facility. Visit **porschedriving.com** for more information.



Ask your Porsche dealer for the latest brochures from Porsche Exclusive, Porsche Design Driver's Selection and the Porsche Sport Driving School.

Index

| | | | | | |
|-----------------------------|-------|----------------------------|----|---------------------------|----|
| 1 | | D | | P | |
| 20-inch 911 Turbo II Design | | Door-entry guards | 23 | PDK gear selector | 19 |
| wheel | 7 | | | Porsche Charge-O-Mat II | 39 |
| 20-inch RS Spyder Design | | E | | Porsche child seats | 31 |
| wheel | 7 | Electronic logbook | 27 | | |
| 19-inch Panamera Turbo | | | | R | |
| wheel | 7 | F | | Rechargeable flashlight | 40 |
| 19-inch Panamera Design | | Floor mats | 21 | Reversible velour | |
| wheel | 8 | | | cargo mat | 21 |
| 18-inch Panamera S wheel | 8 | I | | Roof boxes | 33 |
| | | Ice scraper | 39 | Roof Transport System | 33 |
| B | | Indoor car cover | 37 | | |
| Bike carrier | 33 | Interior care kit | 40 | S | |
| Bluetooth® Hands-Free | | Interior materials | 15 | Service | 43 |
| Phone Interface | 27 | Interior packages | 17 | Ski/snowboard carrier | 35 |
| Boat carrier | 35 | | | Snow chains | 11 |
| | | L | | Sunshade | 21 |
| C | | Luggage net | 37 | Surfboard carrier | 35 |
| Car-care case | 39 | | | | |
| Cargo liner | 38 | M | | T | |
| Color codes | 41–42 | Microfiber cleaning cloths | 40 | Tool kit | 40 |
| Cool box | 38 | Mobile phone preparation | 27 | | |
| Cooling compartment in | | | | U | |
| the rear | 19 | O | | Universal audio interface | 28 |
| Crested valve-stem caps | 11 | Outdoor car cover | 37 | | |

W

| | |
|----------------------------|------|
| Wheel accessories | 11 |
| Wheel center caps | 11 |
| Wheel-cleaning kit | 39 |
| Wheel specifications table | 9–10 |



20-inch RS Spyder Design wheels with summer tires



Multifunction steering-wheel rim in Yachting Mahogany



Bluetooth® Hands-Free Phone Interface



Ski/snowboard carrier



Porsche Cars North America, Inc.
980 Hammond Drive, Suite 1000
Atlanta, Georgia 30328



Mixed Sources

Product group from well-managed
forests, controlled sources and
recycled wood or fiber

www.fsc.org Cert no. SGS-COC-005612
© 1996 Forest Stewardship Council



Dr. Ing. h.c. F. Porsche AG is the owner of numerous trademarks, both registered and unregistered, including without limitation the Porsche Crest®, Porsche®, Boxster®, Carrera®, Cayenne®, Cayman®, Panamera®, Tiptronic®, VarioCam®, PCM®, 911®, 4S®, FOUR, UNCOMPROMISED.® and the model numbers and distinctive shapes of the Porsche automobiles, such as the federally registered 911 and Boxster automobiles. The third-party trademarks contained herein are the properties of their respective owners. Specifications, performance standards, standard equipment, options, and other elements shown are subject to change without notice. Some options may be unavailable when a car is built. Some vehicles may be shown with non-U.S. equipment. Please ask your dealer for advice concerning the current availability of options and verify the optional equipment that you ordered. Porsche recommends seat-belt usage and observance of traffic laws at all times.