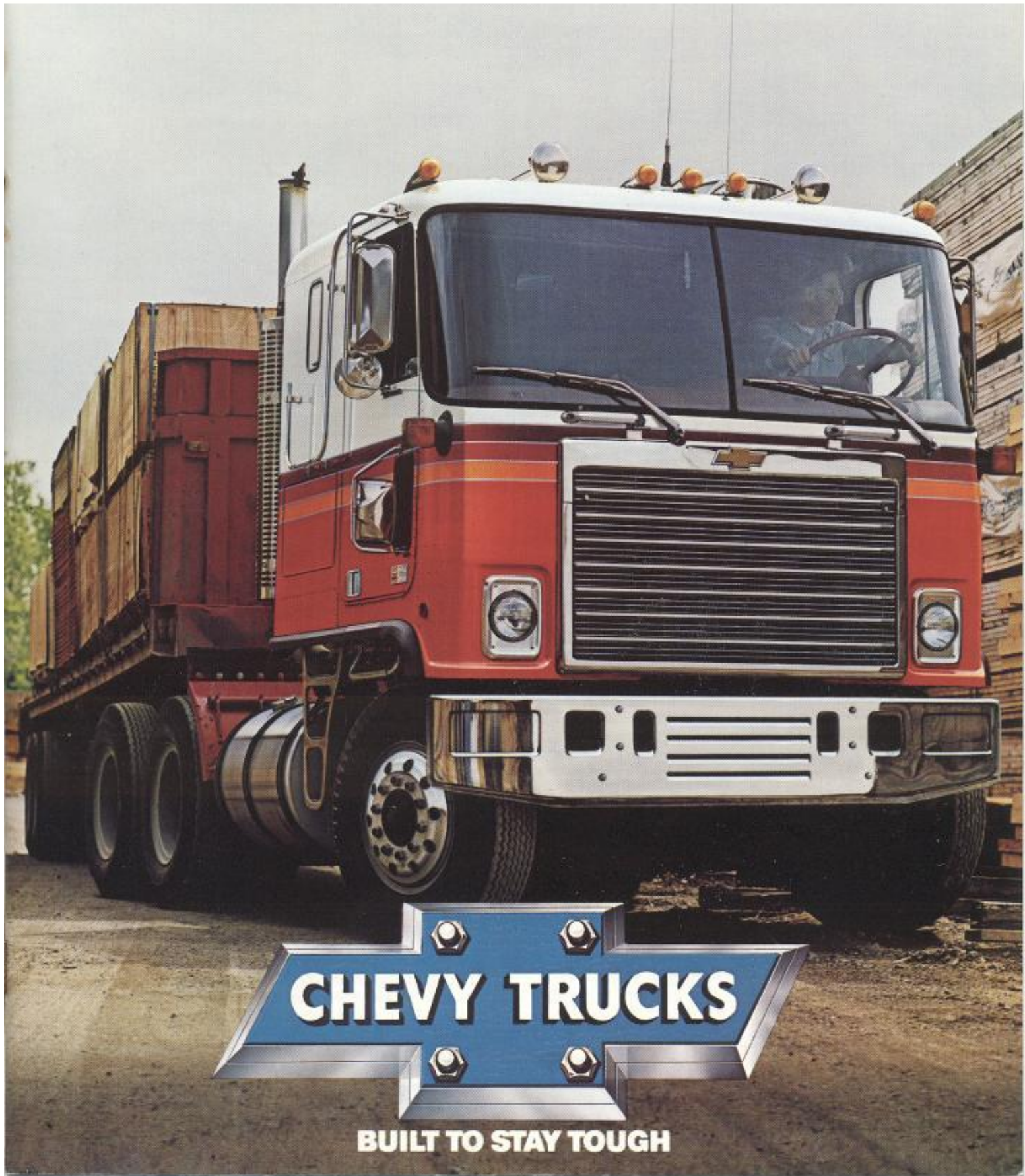


# '80 TITAN





TITAN 90 WITH TRI-TONE PAINT (SHOWN HERE), COVER: TITAN 90 WITH TWO-TONE PAINT AND TRI-COLOR STRIPES.



TITAN 50 WITH CHROME BUMPER



TITAN 90 WITH TRI-TONE PAINT.

# TITAN: BUILT TO STAY TOUGH

## PROVEN AND REFINED OVER YEARS OF LINEHAULING

Titan, Chevy's cab-over heavy-duty line hauler, has earned an enviable reputation among truckers as a hardworking high performer. And it can haul over 500 lbs. more payload this year. Titan's popularity is enhanced by a GCWR of up to 80,000 pounds—by the comfort, spaciousness and visibility of its cab—and by its ease of maintenance. A wide selection of diesel engines, transmissions, single and tandem axles and other equipment lets you tailor Titan to your exacting needs. The short 55" BBC cab allows 28' doubles within 65' overall length. 75" and 87" BBC sleeper cabs are also available. **New for 1980.** 495 pounds less weight • Massive "SS" grille standard • Soft riding tapered front and rear standard springs

- Corrosion-resistant SMC fiberglass doors standard
- Bumpers with flexible end caps standard
- Interior saddle color changed to dark brown and dark blue added
- Improved air conditioner available
- Shock-mounted rear lights available
- Revised headliner with better accessibility to radio and storage room for sunglasses, extra keys and other items standard.

**Titan. For Professionals.** Drivers, owners and mechanics expect a lot from heavy-duty trucks. They want a tough COE, comfort, serviceability, power flexibility and economy of operation. They also want good looks and a wide choice of customizing paint and trim schemes. Titan delivers. Cabs are

of lightweight design with aluminum panels riveted to extruded aluminum headers and rails. Frames are of 1/4" high-performance steel with available reinforcements or lightweight aluminum. Cabs are roomy and fully insulated. And the cab can be tilted a full 68 degrees for minor service or major overhauls. Power flexibility is maintained by availability of 14 engines, 13 transmissions and eight rear axles with seven different ratios. Available automatic on/off engine fans, cycling-compressor air conditioners, light high-torque-rise engines with low rear axle ratios and Dragfoiler® make the new Titan more fuel efficient to operate.

**A WORD ABOUT THIS CATALOG.**  
 We have tried to make this catalog as comprehensive and factual as possible. And we hope you find it useful. However, since the time of printing, some of the information you'll find here may have been updated. Your dealer has details and, before ordering, you should ask him to bring you up to date.

*Many vehicles in this catalog are shown with available factory-installed options, dealer-installed accessories and specialized equipment from various independent suppliers.*

The image shows the interior of a custom truck cab. The dashboard and center console are finished with wood paneling. The seats are upholstered in tan leather with vertical ribbing. A large, dark steering wheel is visible on the left. The overall aesthetic is classic and well-appointed.

# GOOD LOOKIN' AND BUILT TO STAY LOOKIN' GOOD

CUSTOM TITAN INTERIOR WITH OPTIONS.

Because professional drivers spend long hours behind the wheel, all vehicle operations are engineered around the driver's location. Gages are directly in front and controls within easy reach. The 22-inch steering wheel features an elliptical rim with thumb grooves, as well as finger indents for control and grip. Panel service is fast and easy with pop-out gages, front removable panels and color-coded wiring.

#### **STANDARD INTERIOR.**

Designed for driver comfort and efficiency, Titan interiors are available in black, saddle or dark blue and gray. The cab is fully insulated for comfort. Visibility is impressive, and 26" wiper blades provide one of the largest wiped windshield areas available. The embossed vinyl trim is attractive and durable. Dash and control areas are trimmed in rich simulated wood with bright metal accents. Bright metal also accents the brake, clutch and accelerator pedals. An attractive bright aluminum scuff plate with inlaid rubber skid-resistant tread is installed at both doors. A National Cush-N-Aire® seat is standard. And there's a standard tilt steering wheel with a 12-degree adjustment. Many comfort and convenience options may be added. See page 9.

#### **CUSTOM DELUXE INTERIOR.**

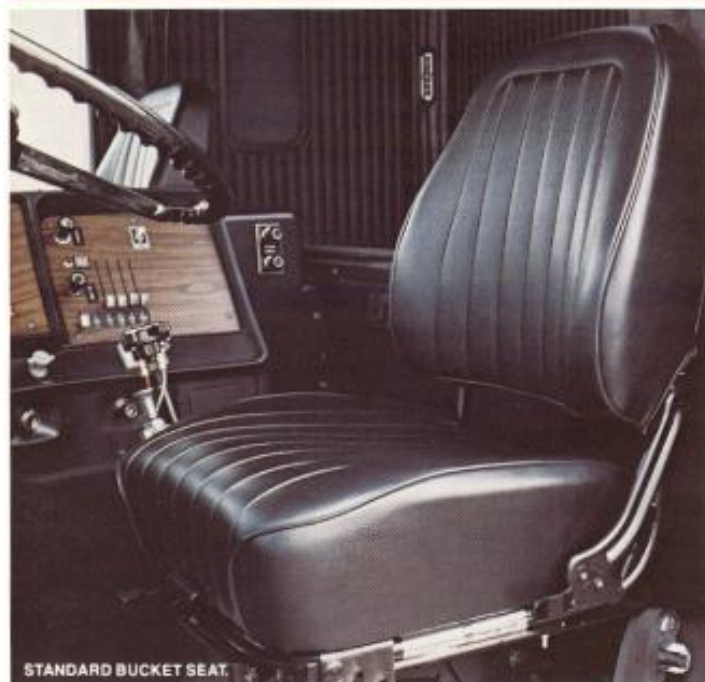
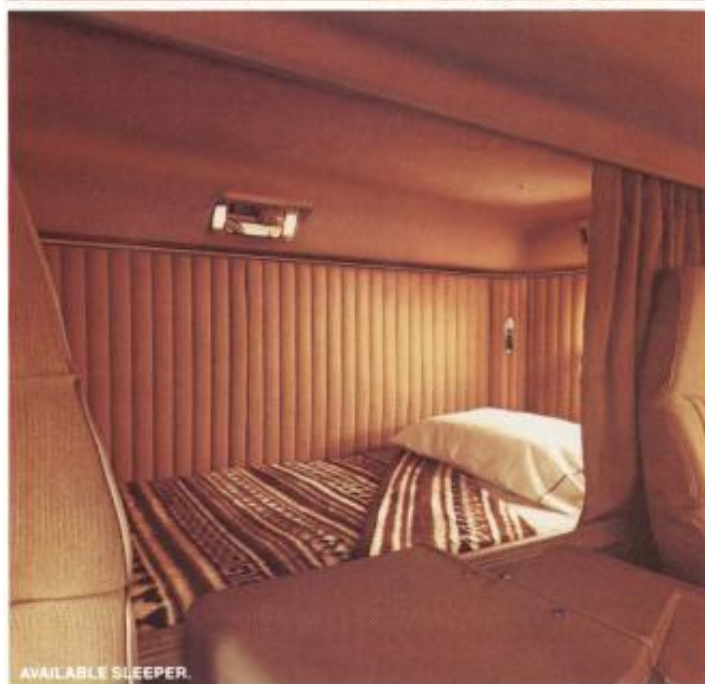
Contains all the features of the standard interior plus nylon carpet and dash pad mats. In addition, an oxblood and gray color combination is available.

#### **SLEEPER CABS.**

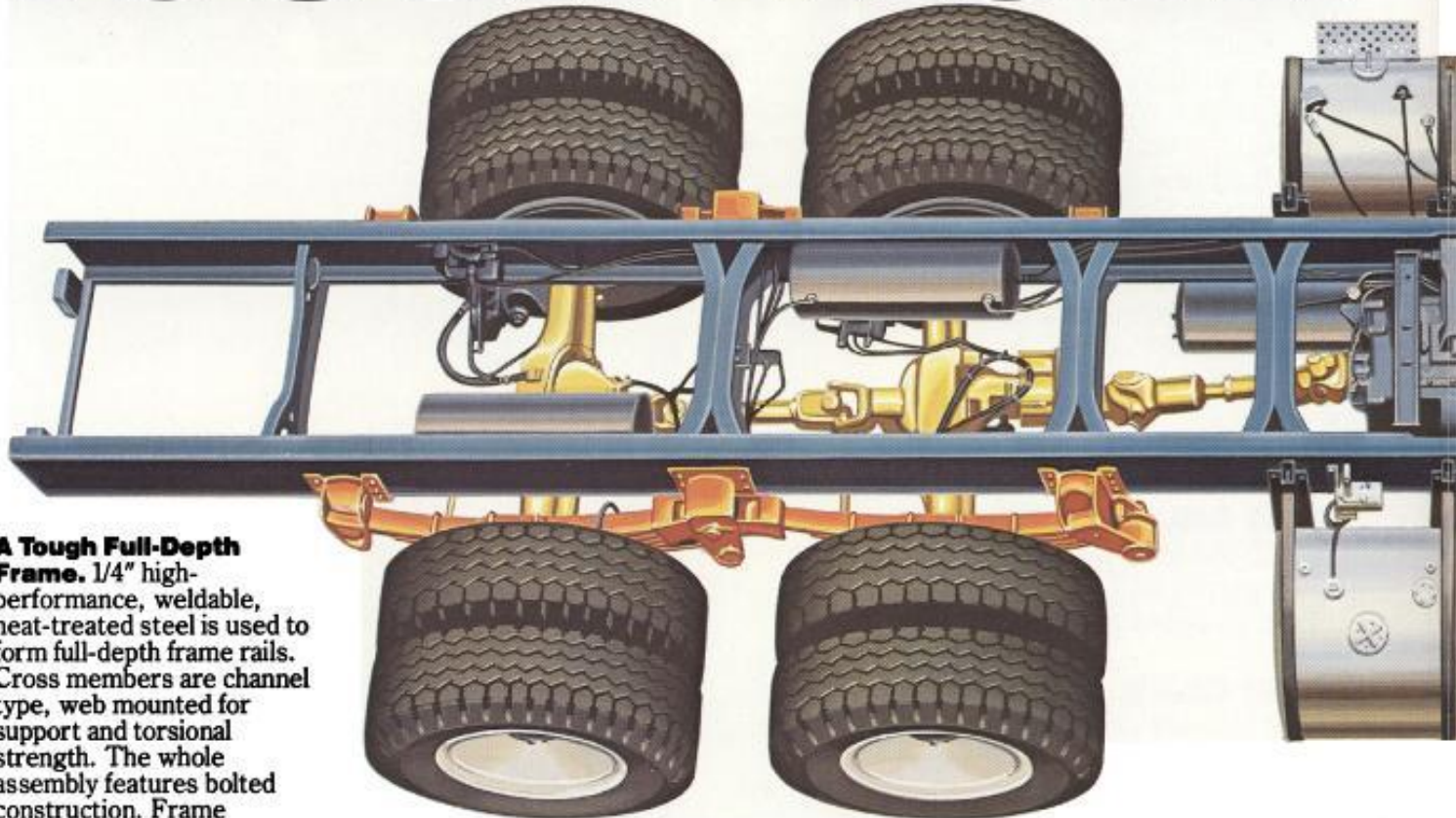
Full-depth sleeper cabs are available for Titan in three sizes: 24", 32" and 36" wide by 88" long. All are insulated, acoustically and thermally. Air conditioning and foam or innerspring mattresses are available. All available sleeper compartments include two-way screened vents at either end and a compartment reading lamp. Separate heater and available air conditioning controls are provided in all sleepers.

#### **THE CORROSION PROTECTION STORY.**

Cabs are completely immersed in a cathodic ELPO dip and joints are sealed with Plastisol® and foam sealers before they receive their final coat of paint. They first undergo a multistage zinc phosphate treatment to help provide a clean, smooth surface. During the cathodic ELPO immersion process, electrically charged primer paint coats all surfaces including out-of-the-way corners. Doors are made of corrosion-resistant SMC fiberglass.



# A TOUGH CHASSIS FOR TOUGH TRUCK



**A Tough Full-Depth Frame.** 1/4" high-performance, weldable, heat-treated steel is used to form full-depth frame rails. Cross members are channel type, web mounted for support and torsional strength. The whole assembly features bolted construction. Frame reinforcements are available.

**A Tough Cab and Foundation.** Titan's welded aluminum cab underbody provides a rugged foundation for the cab. Body panels are of weight-saving aluminum and easily removed. Tough, SMC fiberglass doors are engineered to fit snugly. The door perimeter frames are extruded aluminum and help maintain fit and alignment.

**Front Axles.** Wide-track, 12,000-lb. I-beam front axle is standard. An 18,000-lb. front axle is available with selected engines. Standard (one-and-three-quarter-inch-diameter) double-acting shock absorbers and four-inch-wide tapered front

springs provide a smooth ride.

**Single Rear Axles and Suspensions.** 23,000-lb. Eaton® spiral-bevel rear axle is standard. A 23,000-lb. Rockwell Standard® hypoid single-speed rear axle is available. Depending upon axle selection, variable-rate leaf springs are rated at 18,500 lbs. or 23,000 lbs. Radius leaf drive is standard. And auxiliary springs are also available.

**Tandem Rear Axles and Suspensions.** Rockwell Standard single-speed tandem with a capacity of 34,000 lbs. is standard.

Rockwell 38,000 or 44,000 lbs. and Eaton tandems rated at 34,000 or 38,000 lbs. are available. (See specifications on page 10 for applications by engine.) Reyco tapered spring suspension is standard, with Hendrickson suspensions available.

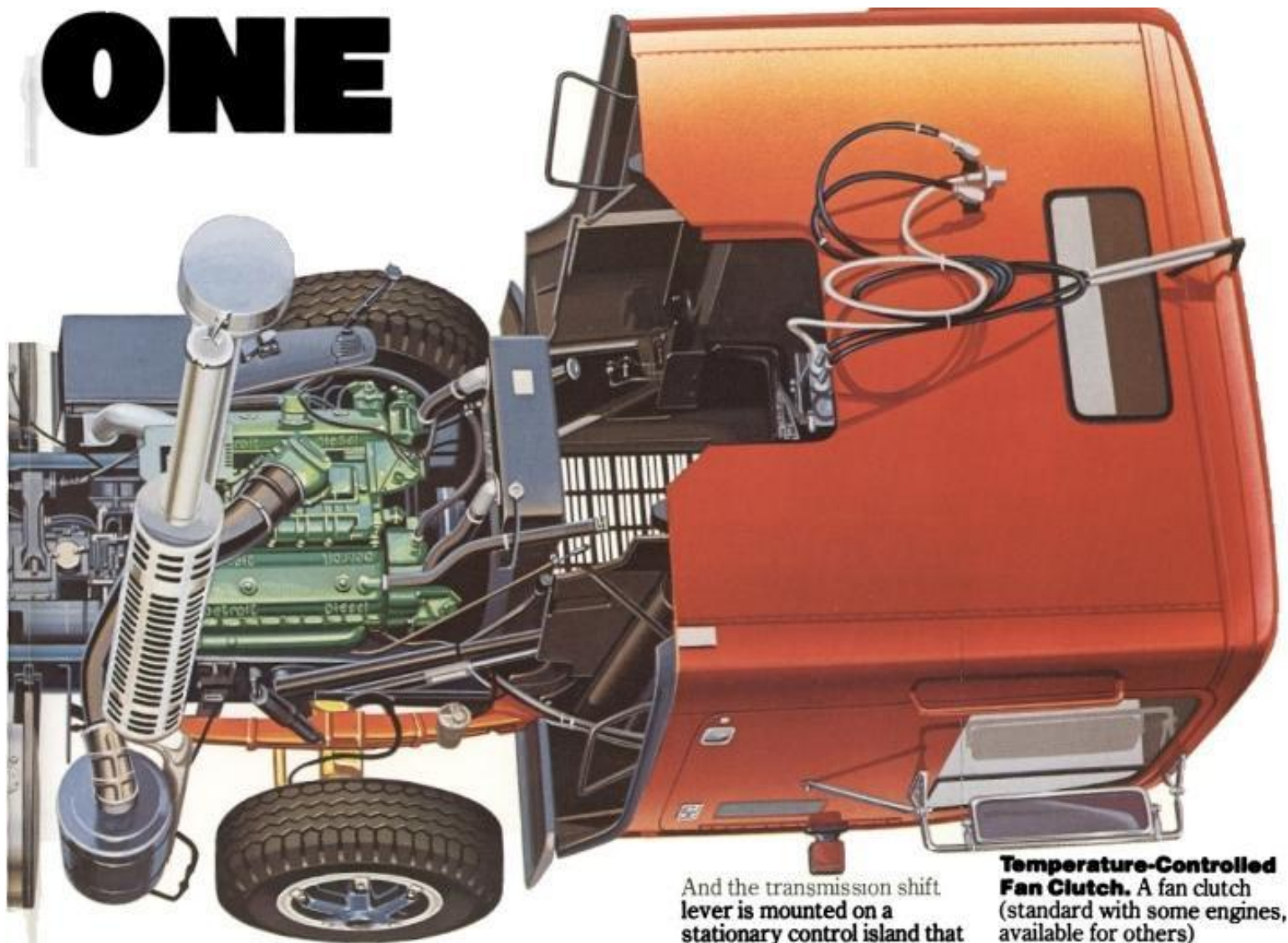
**Titan Easy-Maintenance Features.** Hydraulic cab tilting mechanism. Twin front access doors for easy service of coolant and engine oil. Remote diesel engine starter. Convenient brake line routing. Reinforced nylon chassis plumbing. Alinabal® throttle and clutch linkage. Standard Delco 1200

heavy-duty, maintenance-free batteries. Heat-resistant, plastic wiring insulation. Color-coded wiring. Master circuit breaker for electrical system.

**Heavy-Duty Wheels and Tires.** Cast spoke wheels are standard. Ten-stud, high-tensile or aluminum disc wheels are available. Front wheel seals have inspection window. Standard tires are nylon cord tube-type. Wide range of tires is available, including steel-belted radials.

**Fuel-Efficient Rear Axles.** Lower numerical ratio rear axles are matched with the lower RPM engines. 3.70, 3.90 and 4.11 to 1 rear axle ratios are available.

# ONE



## **Full Selection of Transmissions Available.**

Available manual transmissions include Fuller and Spicer. Allison automatics are also available.

**Full Air Brakes Standard.** Your Chevrolet dealer has the latest information on air brake systems and

specifications and current Federal standards.

**Hydraulic Tilting Mechanism.** (Below) The Titan can be tilted and stopped in any position from 0 to 68 degrees for good engine access. Cab is equipped with both mechanical and hydraulic latches and a safety lock pin.

And the transmission shift lever is mounted on a stationary control island that makes it unnecessary to disconnect the linkages when tilting the cab.

**Positive Clutch Action.** Dual-disc 14-inch pull-type clutch is standard with most engines. Spicer dual-disc 15½-inch clutch is available. Clutch remains connected when cab is in tilted position. It is activated by a cable release system.

**Temperature-Controlled Fan Clutch.** A fan clutch (standard with some engines, available for others) automatically disengages the fan when coolant temperature permits.

**Responsive Steering.** Recirculating ball steering, standard. Standard steering column tilts. Overall steering gear ratio is 28.14 to 1.

**Batteries.** (Below) Standard Delco 1200 heavy-duty, maintenance-free batteries.



## DETROIT DIESELS

Two series in both Sixes and V8s are available, the 71 naturally aspirated and turbocharged and the 92 turbocharged. The work-proven, two-cycle design means every down stroke is a power stroke. This provides fast engine acceleration and quick response to power demands. Turbocharged models feature blower-mounted design which offers increased power in a compact package.

The 92 Series uses the same size block as the 71 Series but has 30% more internal capacity and 25% more power—the best power-to-weight ratio ever offered in a Detroit Diesel. Free-breathing cylinder head utilizes larger valves arranged in a trapezoidal spacing pattern.

"Fuel Squeezer" high-torque-rise engines are available in both the 71 and 92 Series. As the RPMs decrease from governed speed, the torque increases substantially. The vehicle, therefore, needs fewer gear steps than conventional engines.

## CUMMINS DIESELS

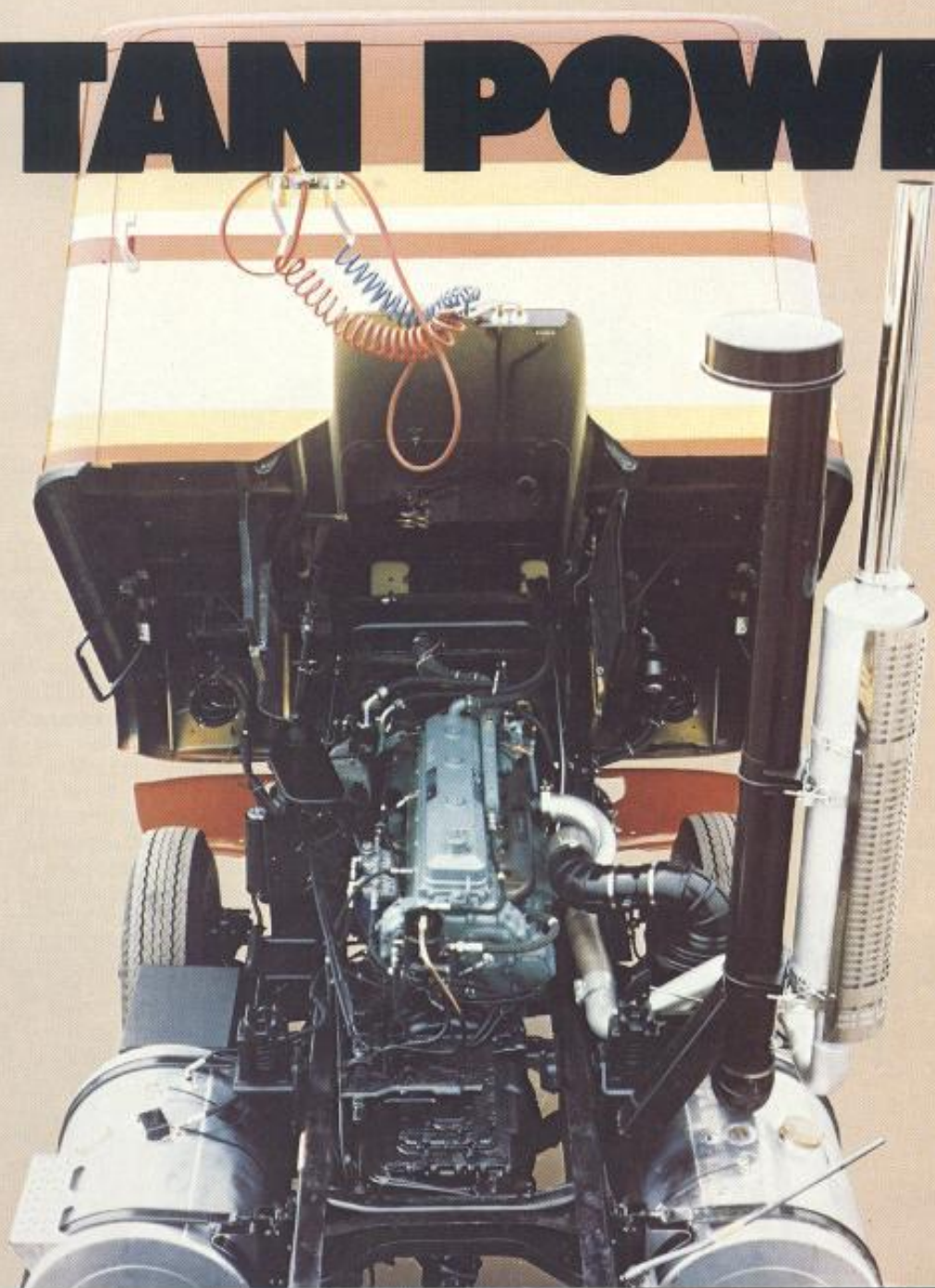
High-displacement turbocharged and aftercooled engines, the NTC 290, NTC 300, NTC 350 and NTC 400, offer an impressive combination of horsepower and torque which operates at modest cylinder pressure and temperature.

The Cummins Formula 290, 300 and 350 Series are high-torque-rise engines which feature big displacement, efficient combustion and low operating and exhaust temperatures. They feature the Cummins Turbocharger.

## CATERPILLAR DIESEL

The Caterpillar 3406 is a direct injection engine. It's available in 290- and 325-gross-hp ratings, turbocharged for hauling power. Fuel injector capsules feature non-dribble design to help control exhaust emission levels. Weight-saving design incorporates large cylinder displacement into a compact block size.

# TITAN POWER



# CHEVY'S E-Z SPEC SYSTEM FOR EASY ORDERING

Getting a Titan that's tailored just right for your particular application is easy, thanks to Chevy's E-Z Specs. The most popular component combinations for different vocations and applications have been calculated and computer programmed. All you do is describe your particular needs to your Chevy Heavy-Duty Truck Dealer. He can then use the "bank" of information to precisely and quickly supply you with the most desirable specifications available.





# TITAN OPTIONS

A wide range of factory-installed and special-equipment options (SEOs) help you equip your Titan the way you want. Shown here are representative examples. Contact your Chevrolet Heavy-Duty Truck Dealer for complete, detailed information.



**Improved Air Conditioning.** A new, improved air conditioning system is available. It allows the compressor to cycle on and off as needed, like the temperature-controlled engine-cooling clutch fan, for long life and less power drain.

**Power Steering.** Power steering pump delivers pressures up to 1280 psi. The pump is gear driven on some Detroit Diesel engines and belt driven on Cummins.

**Steps.** Stainless steel right- and left-hand, ladder-type steps are available.

**Wheels.** 10-stud steel, high-tensile steel and aluminum-disc wheels are available. Also chrome nut covers and front wheel aluminum hubs can be ordered.



**Fuel Tanks.** Dual 50-gal. cylindrical fuel tanks are standard, with 75- and 100-gal. tanks available. Dual rectangular 100-gal. tanks may be ordered for some engines. Also, dual aluminum cylindrical tanks in 50-, 75- and 100-gal. capacities are available. A special fuel tank dress-up package which includes chrome straps and caps may be ordered for the aluminum tanks.



**Dragfoiler®.** Designed especially for the Titan, this molded fiberglass foil is painted white and blends with the aerodynamic contour of the cab for improved fuel efficiency in highway operation. In tests of simulated expressway operations, the Dragfoiler in combination with high-torque-rise engine, low rear axle ratio and radial tires showed significant fuel savings.

**Radios.** Available Delco radios include AM, AM/FM, AM/FM stereo and AM/FM stereo with stereo tape player.

**Outside Sunshield.** An exterior-mounted fiberglass sunshield is available in body color.

**Horns.** Dual air horns are available.



**Oil Filter.** A chrome Luberfiner® oil filter is available.

**Low Tire Pressure Warning System.** A new, low tire pressure warning system is available with tubeless tires. When any tire is low, a red light on the instrument panel goes on.

**Power Windows.** A right-hand-door-only power window and right- and left-hand-door power windows are available.

**Seats.** Three optional Bostrom driver and passenger seats are available. The National Cush-N-Aire® driver's seat is standard.

**Improved Rear Lights.** New for 1980, shock-mounted bulbs are available for improved durability and reduced maintenance.

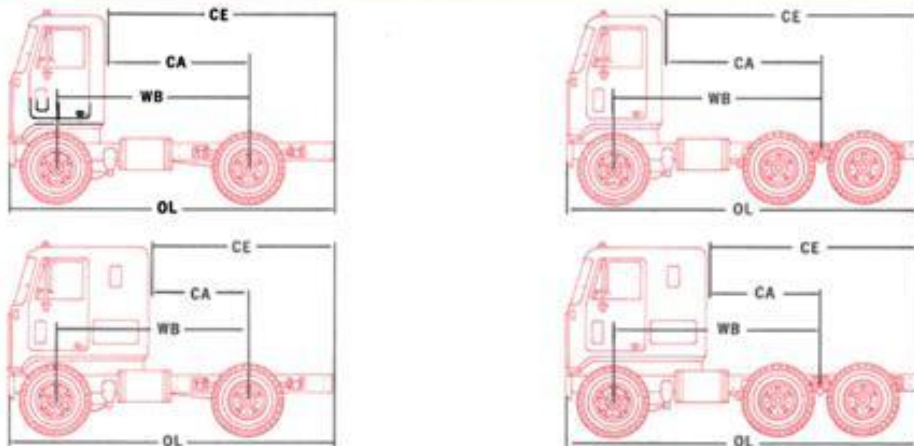
**Roof-Marker Lights.** Bullet-shaped, chromed cab roof-marker lights are available.

**Exhaust Systems.** A choice of four stainless steel exhaust systems are



available: (1) Dual vertical outboard-mounted muffler with tailpipes and heat guards (standard). (2) Single vertical, inboard-mounted muffler. (3) Dual vertical inboard-mounted muffler. (4) Single vertical outboard mounted muffler with tailpipe and heat guards. Rain caps and chrome tailpipes are also available.

## DIMENSIONS



SINGLE AXLE MODELS					TANDEM AXLE MODELS				
SERIES	WB	CA*	CE*	OL	SERIES	WB	CA*	CE*	OL
	110	84	132	187	D9K064, D9L064+	142	116	201	256
	118	92	140	195	D9K064, D9L064+	150	124	201	256
	130	104	164	219	D9K064, D9L064+	165	139	201	256
	142	116	176	231	D9K064, D9L064+	195	169	254	309

\*Dimensions reduced by 20" with 75" Sleeper Cab and by 32" with 87" Sleeper Cab. WB—Wheelbase; CA—Cab-to-center-of-axle; CE—Cab-to-end-of-frame; OL—Overall length. +Sleeper Cab Models.

## GENERAL SPECIFICATIONS

SERIES		D9K042	D9L042+	D9K064†	D9L064†+
MAXIMUM GVWR (LBS.)		33,860	33,860	44,860	44,860
		80,000	80,000	80,000	80,000
FRONT AXLE (LBS.)	STANDARD	12,000	12,000	12,000	10,860
	AVAILABLE	10,860	10,860	10,860	12,000
ENGINE, DIESEL	STANDARD	8V-71N	8V-71N	8V-71N	8V-71N
	AVAILABLE	8V-71N, 8V-71TTA	8V-71N, 8V-71T, TA	8V-71TTA, 8V-92TA, TTA	8V-71T, TA, 8V-92TA, TTA
		6-71N, 6V-92TA, TTA, TTAC	6-71N, 6V-92TA, TTA, TTAC	6V-71N, 6V-92TA, TTA, TTAC	6V-71N, 6V-92TA, TTA, TTAC
		NTC-290, 300, 350 Formula 290, 300, 350	NTC-290, 300, 350 Formula 290, 300, 350	NTC-290, 300, 350, 400 Formula 290, 300, 350, 3406	NTC-290, 300, 350, 400 Formula 290, 300, 350, 3406
TRANSMISSION	STANDARD	(F) RT910	(F) RT910	(F) RT910	(F) RT910
	AVAILABLE*	FULLER	FULLER	FULLER	FULLER
*See your Chevrolet heavy duty truck dealer for availability on certain models.		ALLISON	ALLISON	ALLISON	ALLISON
		SPICER	SPICER	SPICER	SPICER
REAR AXLES	STANDARD	(E) 23121	(E) 23121	(R) SLHD	(R) SLHD
	AVAILABLE	(R) 170	(R) 170	(R) SQHD, (E) 34DS, (E) DS440P (R) SQHP, (E) DS380	(R) SQHD, (E) 34DS, (E) DS440P (R) SQHP, (E) DS380
				(R) SSHD, (E) 38DSC, (E) DS400P	(R) SSHD, (E) 38DSC, (E) DS400P
BRAKES		FULL AIR	FULL AIR	FULL AIR	FULL AIR

## ENGINES

### DETROIT DIESEL

	6-71N	6-71N	8V-71N	8V-71N	8V-71N	8V-71TTA	6V-92TA	6V-92TTA	6V-92TTAC	8V-92TA	8V-92TTA
DISPLACEMENT (CU. IN.)	425.6	425.6	567.5	567.5	567.5	567.5	552	552	552	736	736
	4.25 x 5.0	4.25 x 5.0	4.25 x 5.0	4.25 x 5.0	4.25 x 5.0	4.25 x 5.0	4.84 x 5.0	4.84 x 5.0	4.84 x 5.0	4.84 x 5.0	4.84 x 5.0
	18.7 to 1	18.7 to 1	18.7 to 1	18.7 to 1	18.7 to 1	17 to 1	17 to 1	17 to 1	17 to 1	17 to 1	17 to 1
	2100	2100	2100	2100	2100	1950	2100	1950	1950	2100	1950
	60	65	55	60	65	75	90	90	90	90	90

### CATERPILLAR DIESEL

	3406	3406			NTC-290	NTC-300	NTC-350	NTC-400	Formula 290	Formula 300	Formula 350
DISPLACEMENT (CU. IN.)	893	893			855	855	855	855	855	855	855
	5.4 x 6.5	5.4 x 6.5			5.50 x 6.0	5.50 x 6.0	5.50 x 6.0	5.50 x 6.0	5.50 x 6.0	5.50 x 6.0	5.50 x 6.0
	14.5 to 1	14.5 to 1			15.8 to 1	15.8 to 1	14.1 to 1	14.1 to 1	15.8 to 1	15.8 to 1	14.1 to 1
	1900	2100			2100	2100	2100	2100	1900	1900	1900

## TRANSMISSIONS

MAKE	NO. OF SPEEDS

# MANY DIFFERENT PAINT AND TRIM COMBINATIONS AVAILABLE

You can personalize your Titan by choosing from the large selection of paint and trim schemes available. And there are many colors from which to choose. There are solid and two-tone exteriors without stripes, special exterior without stripes, two-tone exterior with tri-color wide-line stripe, solid exterior with tri-color wide-line stripe and special two-tone and tri-tone paint schemes. Wheels, bumpers, fuel tanks, battery boxes, steps, air cleaners, oil filters, grab handles and other chassis-related parts are finished in bright metal or harmonizing colors. Some of the many paint and stripe combinations are shown below.



## A WORD ABOUT COMPONENTS, OPTIONAL EQUIPMENT, ASSEMBLY AND AVAILABILITY OF THESE CHEVROLETS.

These Chevs incorporate thousands of different components produced by various divisions of General Motors and by various suppliers to General Motors.

With respect to factory-installed extra cost optional equipment, make certain you specify the type of equipment you desire on your vehicle when ordering it from your dealer. We suggest you verify that your vehicle includes the optional equipment you ordered or, if there are changes, that they are acceptable to you.

The Chevy Titan Model Series CD90 described in this catalog is assembled at facilities of General Motors Corporation operated by GMC Truck & Coach Division. This vehicle is also available from GMC dealers under the name GMC Astro Model Series TD9500.

The right is reserved to make changes at any time, without notice, in prices, colors, materials, equipment, specifications and models, and to discontinue models. Check with your Chevrolet dealer for complete information. Chevrolet Motor Division of General Motors Corporation, Detroit, Michigan 48202.



**BUILT TO STAY TOUGH**