



Nissan Intelligent Mobility moves you one step ahead. In cars that feel like an extension of you, helping you see more and sense more, reacting with you, and sometimes even for you. Nissan Intelligent Mobility is about a better future – moving us to a world that’s safer, more sustainable, and exciting.



2020
MURANO®



¹Driving is serious business and requires your full attention. If you have to use the connected device while driving, exercise extreme caution at all times so full attention may be given to vehicle operation. ²Availability of features vary by vehicle model year, model, trim level, packaging, and options. ³Intelligent All-Wheel Drive cannot prevent collisions or provide enhanced traction in all conditions. Always monitor traffic and weather conditions. ⁴Available services/features may be shown. Compatible connected device may be required. Only use services/features and device when safe and legal to do so. Subject to GPS and wireless network availability and connection, and system/technology limitations. Text rates/data usage/subscription may apply. Some services/features provided by companies not within Nissan or its partners' or agents' control and may be discontinued at any time. For more information, see dealer, Owner's Manual, or [NissanUSA.com/connect/important-information](https://www.nissanusa.com/connect/important-information). ⁵Use Hands Free Text Messaging when parked in a safe location. If you must use while driving, monitor traffic conditions and keep both hands on the steering wheel to prevent collisions. Compatible device required. Message and data rates may apply. ⁶Never program while driving. GPS mapping may not be detailed in all areas or reflect current road status. ⁷Automatic Emergency Braking and Automatic Emergency Braking with Pedestrian Detection cannot prevent all collisions and may not provide warning or braking in all conditions. Driver should monitor traffic conditions and brake as needed to prevent collisions. See Owner's Manual for safety information. ⁸Available feature. ⁹Rear Automatic Braking cannot prevent all collisions and may not provide warning or braking in all conditions. Driver should monitor traffic conditions and brake as needed to prevent collisions. See Owner's Manual for safety information. ¹⁰Rear Cross Traffic Alert may not detect all vehicles. See Owner's Manual for safety information. ¹¹Blind Spot Warning cannot prevent collisions and may not detect every object or warn in all situations. Driver should always turn and look before changing lanes. See Owner's Manual for safety information. ¹²Intelligent Lane Intervention and Lane Departure Warning only operate when lane markings are detectable. See Owner's Manual for safety information. ¹³Cargo shown for display purposes only. Cargo and load capacity limited by weight and distribution. Always secure cargo. Heavy loading of the vehicle with cargo, especially on the roof, will affect the handling and stability of the vehicle. ¹⁴Intelligent Around View® Monitor cannot eliminate blind spots and may not detect every object. Driver should always turn and check surroundings before driving. See Owner's Manual for safety information. ¹⁵Virtual composite 360° view. ¹⁶Extra cost option. ¹⁷Intelligent Forward Collision Warning cannot prevent collisions. See Owner's Manual for safety information. ¹⁸Driving is serious business and requires your full attention. If you have to use the feature while driving, exercise extreme caution at all times so full attention may be given to vehicle operation. ¹⁹Information displayed is dependent on how vehicle is equipped. ²⁰RearView Monitor may not detect every object and does not eliminate blind spots or warn of moving objects. See Owner's Manual for safety information. ²¹Intelligent Driver Alertness cannot provide a warning in every situation. See Owner's Manual for safety information. ²²Air bags are only a supplemental restraint system. Always wear your seat belt. Rear-facing child restraints should not be placed in the front-passenger's seat. All children 12 and under should ride in the rear seat properly secured in child restraints, booster seats, or seat belts according to their size. Air bags will only inflate in certain accidents. See Owner's Manual for safety information. ²³See Owner's Manual for safety information. ²⁴Intelligent Cruise Control uses limited braking and is not a collision avoidance or warning system. Driver should monitor traffic conditions and brake as needed to prevent collisions. See Owner's Manual for safety information. ²⁵Sonar System may not detect every object. Driver should always check surroundings before driving. See Owner's Manual for safety information. ²⁶State laws may apply. Review before using. ²⁷Traffic Sign Recognition (TSR) may not detect and read all traffic signs in all conditions. Driver should monitor all traffic signs and obey all traffic laws. ²⁸Genuine Nissan Accessories are covered by Nissan's Limited Warranty on Genuine Nissan Replacement Parts, Genuine NISMO® S-Tune Parts, and Genuine Nissan Accessories for the longer of 12 months/12,000 miles (whichever occurs first) or the remaining period under the 3-year/36,000-mile (whichever occurs first) Nissan New Vehicle Limited Warranty. Terms and conditions apply. See dealer, Warranty Information Booklet, or [parts.NissanUSA.com](https://www.nissanusa.com/parts) for details. ²⁹Not a genuine Nissan part/accessory. Not warranted by Nissan. Refer to product manufacturer for warranty details. Nissan Limited Warranty does not cover damages or failures to the vehicle caused by improper installation or alterations of any Nissan-approved accessory or component. Contact your dealer/retailer for details. ³⁰Genuine Nissan Accessory Roof Rail Crossbars have a maximum weight limit of 100 lbs. ³¹Photo is an example only. Nissan vehicle shown may not represent named model or current model year. ³²Please follow Towing Guidelines. Towing capability varies by configuration. See Nissan Towing Guide and Owner's Manual for additional information. ³³Brake Assist cannot prevent all collisions and may not provide warning or braking in all conditions. Driver should monitor traffic conditions and brake as needed to prevent collisions. See Owner's Manual for safety information. ³⁴Vehicle Dynamic Control cannot prevent collisions due to abrupt steering, carelessness, or dangerous driving techniques. It should remain on when driving, except when freeing the vehicle from mud or snow. See Owner's Manual for safety information. ³⁵Tire Pressure Monitoring System is not a substitute for regular tire pressure checks. See Owner's Manual for safety information. ³⁶Vehicle must be on for the Easy-Fill Tire Alert to operate. ³⁷Fuel economy based on targeted 2020 EPA fuel economy estimates for 2020 Murano® EPA data not available at time of publication. Targeted 2020 fuel economy 28 highway MPG, 20 city MPG estimate based on Nissan internal testing results, subject to EPA confirmation. Actual mileage may vary with driving conditions — use for comparison only. ³⁸For a period of 36 months/36,000 miles from the date the vehicle is delivered to the first retail buyer or otherwise put into use, whichever is earlier. Android,™ Android Auto,™ YouTube,® Google, Google Assistant, Google Maps™ and other marks are trademarks of Google LLC. The Google Assistant is not available in certain language and countries. Apple CarPlay® and Apple Music® are registered trademarks of Apple, Inc. Bluetooth® word mark and logos are owned by Bluetooth SIG, Inc., and any use of such marks by Nissan is under license. Bose® is a registered trademark of The Bose Corporation. ChromaFlair® is a registered trademark of Optical Coating Laboratory, LLC. Facebook® is a registered trademark of Facebook, Inc. HD Radio® is a registered trademark of iBiquity Digital Corporation. HomeLink® is a registered trademark of Gentex Corporation. iPhone® is a registered trademark of Apple, Inc. All rights reserved. iPhone® or other external device not included. iTunes® is a registered trademark of Apple, Inc. Siri® and Siri® Eyes Free are registered trademarks of Apple, Inc. The Sirius,® XM,® and SiriusXM® names and all related marks and logos are trademarks of Sirius XM Radio Inc. Twitter® is a registered trademark of Twitter, Inc. Yakima® is a registered trademark of Yakima Products, Inc. This brochure is intended for general descriptive and informational purposes only. It is subject to change and does not constitute an offer, representation or warranty (express or implied) by Nissan North America, Inc. Interested parties should confirm the accuracy of any information in this brochure as it relates to a vehicle directly with Nissan North America, Inc., before relying on it to make a purchase decision. Nissan North America, Inc., reserves the right to make changes, at any time, without prior notice, in prices, colors, materials, equipment, specifications, and models and to discontinue models or equipment. Due to continuous product development and other pre- and post-production factors, actual vehicle, materials and specifications may vary from this brochure. Some vehicles shown with optional equipment. See the actual vehicle for complete accuracy. Availability and delivery times for particular models or equipment may vary. Specifications, options and accessories may differ in Hawaii, U.S. territories and other countries. For additional information on availability, options or accessories, see your Nissan dealer or contact Nissan North America, Inc. At [NissanUSA.com](https://www.nissanusa.com), you'll find virtual product demonstrations, a way to "build your own Nissan," a dealer locator, and more information about key Nissan support services. Or if you'd prefer, call 1-800-NISSAN-3 for answers to specific questions about Murano® or any other Nissan vehicle. The Nissan names, logos, product names, feature names, and slogans are trademarks owned by or licensed to Nissan Motor Co. Ltd. and/or its North American subsidiaries. Other trademarks and trade names are those of their respective owners. **Always wear your seat belt, and please drive responsibly.** ©2019 Nissan North America, Inc. '20 Murano® 2001005-N-08/19-60M-CGI

This is the 2020 Nissan Murano.[®] Make a seamless connection with your tech.¹ Driver assistance features let you see and sense more,² while available Intelligent All-Wheel Drive adds confidence to any drive.³ And enjoy the view of what lies ahead from the custom-tailored comfort of Murano's available semi-aniline leather-appointed interior. This is tech that anticipates what's next. This is Nissan Intelligent Mobility.





Available Heated Front
and Rear Outboard Seats

Available Semi-aniline
Leather Appointments

Available Dark
Wood Finishes

Front and Rear
USB-C Ports¹

Nissan Murano® Platinum AWD shown in Cashmere Semi-aniline Leather.

PREMIUM GETS AN UPGRADE

Available dark wood finishes and semi-aniline leather-appointed seats add an upgraded look and feel to Murano's already premium interior. Things continue to look up with the available Dual Panel Panoramic Moonroof that lets in natural light and provides an impressively large view above. And with front and rear USB-C ports, everyone can enjoy fast charging.¹

INTELLIGENT ALL-WHEEL DRIVE

Murano's available Intelligent All-Wheel Drive adapts to changing conditions, helping you get the grip you need for the situation.³ The system can automatically switch from 2-wheel to 4-wheel and back, for optimal fuel efficiency and confidence on the road.



NISSAN SAFETY SHIELD® 360

Imagine being surrounded by confidence on every drive. Nissan Intelligent Mobility includes features that monitor in front of you, behind you, and on either side, and can step in to help keep you out of trouble. These six features are available on Murano S and standard on Murano SV and above.²

Automatic Emergency Braking with Pedestrian Detection^{7, 8}

Rear Automatic Braking^{8, 9}

Rear Cross Traffic Alert^{8, 10}

Blind Spot Warning^{8, 11}

Lane Departure Warning^{8, 12}

High Beam Assist⁸

MOTION ACTIVATED LIFTGATE

Hands full? Just kick under the rear bumper to open the available Motion Activated Liftgate, without reaching for a key or juggling whatever you're carrying.¹³



INTELLIGENT AROUND VIEW® MONITOR

Keep your pride and rims intact. The available Intelligent Around View Monitor makes parking easy with a virtual composite 360° bird's-eye view of your Murano. You can select from split-screen close-ups of the front, rear, and curbside views for a better look. It also gives you an on-screen heads-up when it detects moving objects near your vehicle. We're looking at you, shopping cart.^{14, 15}



SEAMLESS CONNECTIVITY

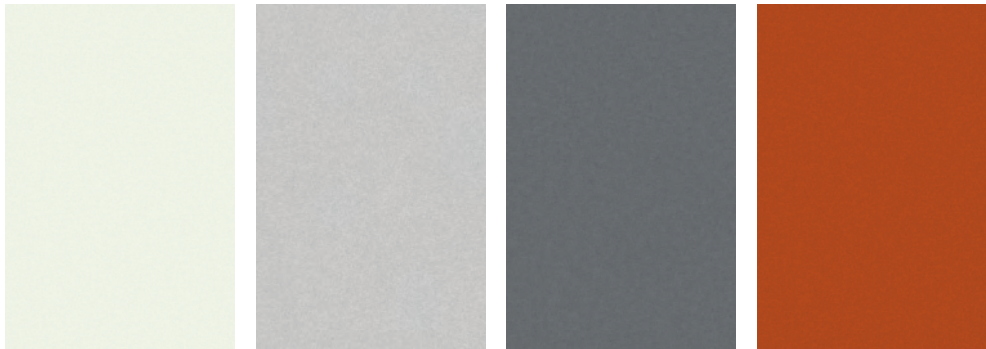
People to see? Places to be? Just ask Siri.® Equipped with Siri® voice control, Apple CarPlay® brings on board to your Murano® your contacts, favorite messaging apps, iTunes® library, Apple Music® playlists, Apple Maps, and more. Simply plug in your compatible iPhone® and go.^{4, 5}



Know where you're going and when with Android Auto™ for your Murano. Google Maps™ helps you navigate to your next appointment, while your Google Assistant keeps you on top of your schedule. Choose a song, change your destination, or respond to a text with your hands on the wheel using the hundreds of available voice commands.^{4, 5, 6}

androidauto

CHOOSE YOUR COLOR



Pearl White TriCoat¹⁶

Brilliant Silver Metallic

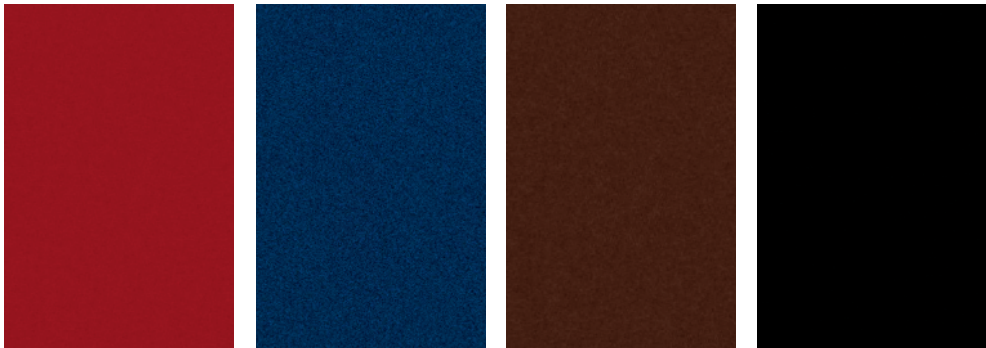
Gun Metallic

Sunset Drift
ChromaFlair^{®16}

	S	SV	SL	PLT	S	SV	SL	PLT	S	SV	SL	PLT	S	SV	SL	PLT
GRAPHITE CLOTH	■	■			■	■	■		■	■				■		
CASHMERE CLOTH		■				■								■		
GRAPHITE LEATHERETTE		□				□				□				□		
CASHMERE LEATHERETTE		□														
GRAPHITE LEATHER			■				■				■				■	
CASHMERE LEATHER			■				■				■				■	
MOCHA SEMI-ANILINE LEATHER				■								■				
GRAPHITE SEMI-ANILINE LEATHER				■				■				■				■
CASHMERE SEMI-ANILINE LEATHER				■				■				■				■

■ Standard
□ Optional

Nissan has taken care to ensure that the color swatches presented here are the closest possible representations of actual vehicle colors. Swatches may vary slightly due to the printing process and whether viewed in daylight, fluorescent or incandescent light. Please see the actual colors at your dealer.



Cayenne Red Metallic

Deep Blue Pearl

Mocha Almond Pearl

Super Black

	S	SV	SL	PLT	S	SV	SL	PLT	S	SV	SL	PLT	S	SV	SL	PLT
GRAPHITE CLOTH		■			■	■			■	■			■	■		
CASHMERE CLOTH		■				■				■				■		
GRAPHITE LEATHERETTE		□				□				□				□		
CASHMERE LEATHERETTE		□				□				□				□		
GRAPHITE LEATHER			■				■				■				■	
CASHMERE LEATHER			■				■				■				■	
MOCHA SEMI-ANILINE LEATHER								■								■
GRAPHITE SEMI-ANILINE LEATHER				■				■				■				■
CASHMERE SEMI-ANILINE LEATHER				■				■				■				■

CHOOSE YOUR INTERIOR



Nissan Murano[®] Platinum AWD shown in Cashmere Semi-aniline Leather.



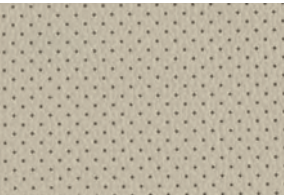
Graphite Cloth
S | SV

Cashmere Cloth
SV

Graphite Leatherette
SV

Cashmere Leatherette
SV

Graphite Leather
SL



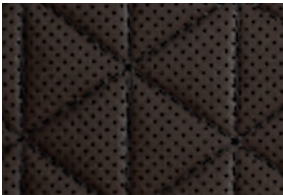
Cashmere Leather
SL



Graphite Semi-aniline
Leather
Platinum



Cashmere Semi-aniline
Leather
Platinum



Mocha Semi-aniline
Leather
Platinum

CHOOSE YOUR TRIM LEVEL

S

260-hp, 3.5-liter V6 engine, Xtronic CVT® (Continuously Variable Transmission), Front-Wheel Drive, Intelligent Forward Collision Warning,¹⁷ Automatic Emergency Braking,⁷ 18" Machine-finished aluminum-alloy wheels, Automatic on/off headlights, LED headlights with LED Signature Daytime Running lights, LED taillights, Dual Zone Automatic Temperature Control with in-cabin microfilter, Nissan Intelligent Key® with Push Button Ignition, 6-way manual driver's seat, Cloth seat trim, Advanced Drive-Assist® Display,^{18, 19} Three 12-volt DC power outlets,¹ Apple CarPlay,^{®4} Android Auto,^{™4} NissanConnect® 8" touch-screen display,⁴ Nissan Voice Recognition,⁶ Hands-free Text Messaging Assistant,⁵ Bluetooth® Hands-free Phone System and streaming audio,⁴ RearView Monitor,²⁰ Auxiliary audio input jack,¹ Two USB ports and two USB-C ports,¹ SiriusXM® Radio with 3-month trial subscription included,⁴ Intelligent Driver Alertness,²¹ Nissan Advanced Air Bag System,²² Rear Door Alert²³

AVAILABLE PACKAGE:
Technology Package



SV

INCLUDES S EQUIPMENT PLUS:

Automatic Emergency Braking with Pedestrian Detection,⁷ Intelligent Lane Intervention,¹² Blind Spot Warning,¹¹ Rear Cross Traffic Alert,¹⁰ High Beam Assist, Rear Automatic Braking,⁹ Intelligent Cruise Control,²⁴ Rear sonar system,²⁵ Power heated outside mirrors with LED turn signal indicator, Black roof rails,¹³ Remote Engine Start System with Intelligent Climate Control,²⁶ 10-way power driver's seat, including 2-way power lumbar support, 4-way power front-passenger's seat, Leather-wrapped steering wheel and shift knob, Auto-dimming rearview mirror, HomeLink® Universal Transceiver

AVAILABLE PACKAGE:
Premium Package



SL

INCLUDES SV EQUIPMENT PLUS:

20" Machine-finished aluminum-alloy wheels, Traffic Sign Recognition,²⁷ Intelligent Around View® Monitor,¹⁴ Front and rear sonar system,²⁵ Silver roof rails,¹³ LED fog lights, Power heated outside mirrors with LED turn signal indicators and reverse tilt-down feature, Motion Activated Liftgate,¹³ Driver's seat and outside mirrors position memory, Leather-appointed seats, Heated front and rear seats, Heated steering wheel, Adjustable ambient LED interior lighting, Bose® Premium Audio System with 11 speakers, including dual subwoofers, Nissan Door to Door Navigation with Premium Traffic,⁶ SiriusXM® Traffic and Travel Link® with 3-month trial access⁴

AVAILABLE PACKAGE:
Moonroof Package



PLATINUM

INCLUDES SL EQUIPMENT PLUS:

Distinctive 20" dark hyper silver aluminum-alloy wheels, Dual Panel Panoramic Moonroof, Climate-controlled front seats (heated and cooled), Semi-aniline leather-appointed seats with diamond-quilted inserts, Smooth leather-wrapped steering wheel, Contrast micro-piping for seat, door, and console inserts, Power-tilt and power-telescoping steering column with memory position, NissanConnect® Services powered by SiriusXM® with trial access to 3-year Select and 6-month Premium Plus packages⁴



CHOOSE YOUR PACKAGE

TECHNOLOGY PACKAGE

S

Automatic Emergency Braking with Pedestrian Detection,⁷ High Beam Assist, Blind Spot Warning,¹¹ Intelligent Lane Intervention,¹² Rear Cross Traffic Alert,¹⁰ Rear Automatic Braking,⁹ Rear sonar system²⁵



PREMIUM PACKAGE

SV

Intelligent Around View® Monitor,¹⁴ Front and rear sonar system,²⁵ Dual Panel Panoramic Moonroof, LED fog lights, Leatherette-appointed seats, Heated front seats



MOONROOF PACKAGE

SL

Dual Panel Panoramic Moonroof



CHOOSE YOUR ACCESSORIES



Every Genuine Nissan Accessory is custom-fit, custom-designed and durability-tested. Each one is backed by Nissan's 3-year/36,000-mile (whichever occurs first) limited warranty (if installed by dealer at the time of purchase), and can be financed when installed by dealer at time of purchase.²⁸

- A. Rear Cargo Cover and Carpeted Cargo Area Protector¹³**
Keep it covered and keep it protected. (Sold separately)
- B. Illuminated Kick Plates and Interior Accent Lighting**
For a grand entrance every time. (Sold separately)
- C. Yakima® ForkLift Bike Rack^{13, 29, 30, 31}**
Give your bike a ride for once.
- D. Roof Rail Crossbars^{13, 30}**
Bring along more cargo and leave space inside to stretch out.
- E. Frameless Auto-dimming Rearview Mirror with Universal Remote**
This is one eye-opening feature.
- F. Stainless Steel Sport Pedals³¹**
Step up your style.
- G. All-Season Floor Mats**
Neither rain, sleet or snow will muck up your Murano.[®]
- H. All-Season Cargo Area Protector¹³**
Preserve and protect your cargo – and your Murano.

Additional Accessories:

- Carpeted Floor Mats
- Remote Engine Start System²⁶
- Portable Cargo Organizer¹³
- Cargo Net¹³
- Hatch Tent
- Impact Sensor
- Wheel Locks
- Clear Rear Bumper Protector
- Yakima® OffGrid²⁹
- Yakima® LoadWarrior²⁹
- Yakima® SupDawg²⁹
- Yakima® RocketBox Pro 11²⁹
- Yakima® SkyBox 16²⁹
- Yakima® FatCat EVO 6²⁹
- Yakima® JayLow²⁹
- Yakima® FrontLoader²⁹
- Yakima® Forklift²⁹
- And More

GENUINE NISSAN ACCESSORIES
EMBRACE THE ART OF ACCESSORIZING

For more information and to shop online for Murano® Genuine Nissan Accessories, go to bit.ly/20murano-estore



To see Genuine Nissan Accessories in action, go to bit.ly/20murano_gnavideos

Nissan Murano® Platinum AWD shown in Super Black with 20" Satin Black Aluminum-alloy Wheels, Exterior Ground Lighting, Roof Rail Crossbars,^{13, 30} Satin Chrome Rear Bumper Protector, Satin Chrome Rear Underbody Trim, Splash Guards, Tow Hitch Receiver,³² Hitch Ball Mount,³² and Hitch Ball.³²

SPECIFICATIONS

Engine	S	SV	SL	PLAT
3.5-liter DOHC 24-valve V6 engine	■	■	■	■
Horsepower – 260 hp @ 6,000 rpm				
Torque – 240 lb-ft @ 4,400 rpm				
Continuously Variable Valve Timing Control System (CVTCS) on intake valves	■	■	■	■
Variable induction system	■	■	■	■
Nissan Direct Ignition System	■	■	■	■
Double-tipped iridium spark plugs	■	■	■	■
Electronic drive-by-wire throttle	■	■	■	■

Drivetrain				
Front-Wheel Drive (FWD)	■	■	■	■
Intelligent All-Wheel Drive (AWD) ³	□	□	□	□
Xtronic CVT® (Continuously Variable Transmission)	■	■	■	■

Brakes				
4-wheel vented disc brakes	■	■	■	■
4-wheel Anti-Lock Braking System (ABS) – G-sensor on AWD models	■	■	■	■
Electronic Brake force Distribution (EBD)	■	■	■	■
Brake Assist ³³	■	■	■	■

Suspension/Chassis Bracing/Steering				
Independent strut front suspension	■	■	■	■
Multi-link independent rear suspension	■	■	■	■
Front and rear stabilizer bars	■	■	■	■
Vehicle-speed-sensitive power steering	■	■	■	■

Driver Assistance Technologies				
Cruise Control	■			
Intelligent Cruise Control ²⁴		■	■	■
Intelligent Forward Collision Warning ¹⁷	■	■	■	■
Automatic Emergency Braking ⁷	■			
Automatic Emergency Braking with Pedestrian Detection ⁷	S	■	■	■
Intelligent Lane Intervention ¹²	S	■	■	■
Blind Spot Warning ¹¹	S	■	■	■
Rear Cross Traffic Alert ¹⁰	S	■	■	■
RearView Monitor ²⁰	■	■		
Intelligent Around View® Monitor ¹⁴			■	■
Rear sonar system ²⁵	S	■		
Front and rear sonar system ²⁵		P	■	■
Rear Automatic Braking ⁹	S	■	■	■
Vehicle Dynamic Control (VDC) with Traction Control System (TCS) ³⁴	■	■	■	■
Active Brake Limited Slip (ABLS)	■	■	■	■
Hill start assist	■	■	■	■
High Beam Assist	S	■	■	■
Traffic Sign Recognition ²⁷			■	■
Intelligent Driver Alertness ²¹	■	■	■	■

Wheels/Tires				
18" x 7.5" machine-finished aluminum-alloy wheels	■	■		
20" x 7.5" machine-finished aluminum-alloy wheels			■	

Wheels/Tires (continued)	S	SV	SL	PLAT
Distinctive 20" x 7.5 dark hyper silver aluminum-alloy wheels				■
P235/65R18 all-season tires	■	■		
P235/55R20 all-season tires			■	■

Exterior Features				
LED headlights with LED Signature Daytime Running Lights	■	■	■	■
Automatic on/off headlights	■	■	■	■
LED fog lights		P	■	■
LED taillights	■	■	■	■
Black roof rails ¹³		■		
Silver roof rails ¹³			■	■
Dual Panel Panoramic Moonroof		P	M	■
Chrome door handles	■	■	■	■
Power outside mirrors with LED turn signal indicators	■			
Power heated outside mirrors with LED turn signal indicators		■		
Power heated outside mirrors with LED turn signal indicators and reverse tilt-down feature			■	■
Active Grille Shutters	■	■	■	■
Motion Activated Liftgate			■	■

Comfort/Convenience				
Rear Door Alert ²³	■	■	■	■
Dual Zone Automatic Temperature Control with in-cabin microfilter	■	■	■	■
Rear passenger air conditioning vents	■	■	■	■
HomeLink® Universal Transceiver		■	■	■
Driver's seat and outside mirrors position memory			■	■
Steering-wheel position memory				■
Steering wheel-mounted cruise control	■	■	■	■
Nissan Intelligent Key® with Push Button Ignition	■	■	■	■
Remote Engine Start System with Intelligent Climate Control ²⁶		■	■	■
Remote front windows down	■	■	■	■
Tilt and telescoping steering column	■	■	■	
Power-tilt and power-telescoping steering column				■
Variable intermittent windshield wipers	■			
Vehicle speed-sensing variable intermittent windshield wipers		■	■	■
Intermittent rear window wiper	■	■	■	■
Auto-dimming rearview mirror		■	■	■
Three 12-volt DC power outlets ¹	■	■	■	■
Adjustable ambient LED interior lighting			■	■
Eight cargo area tie-down hooks and rings ¹³	■	■	■	■

Seating/Appointments				
6-way manual driver's seat	■			
10-way power driver's seat, including 2-way power lumbar support		■	■	■
4-way manual front-passenger's seat	■			
4-way power front-passenger's seat		■	■	■
Heated front seats		P	■	

Seating/Appointments (continued)	S	SV	SL	PLAT
Climate-controlled front seats (heated and cooled)				■
Heated rear seats			■	■
60/40 Split fold-down rear seatbacks with cargo area-accessible levers	■	■	■	■
Reclining rear seatbacks with center armrest	■	■	■	■
Cloth-wrapped A-pillar			■	■
Cloth seat trim	■	■		
Leatherette-appointed seats		P		
Leather-appointed seats			■	
Semi-aniline leather-appointed seats with diamond-quilted inserts				■
Leather-wrapped steering wheel		■	■	
Leather-wrapped shift knob		■	■	
Smooth leather-wrapped steering wheel				■
Heated steering wheel			■	■

Infotainment				
Advanced Drive-Assist Display ^{18, 19}	■	■	■	■
NissanConnect® 8" touch-screen display ⁴	■	■	■	■
Nissan Door to Door Navigation with Premium Traffic ⁶			■	■
SiriusXM® Traffic and Travel Link® with 3-month trial access ⁴			■	■
NissanConnect Services powered by SiriusXM® with trial access to 3-year select and 6-month Premium Plus packages ⁴				■
Nissan Voice Recognition ⁶	■	■	■	■
Apple CarPlay® ⁴	■	■	■	■
Android Auto™ ⁴	■	■	■	■
Hands-free Text Messaging Assistant ⁵	■	■	■	■
Bluetooth® Hands-free Phone System ⁴	■	■	■	■
AM/FM/CD audio system with six speakers	■	■		
Bose® Premium Audio System with 11 speakers, including dual subwoofers			■	■
MP3/WMA CD playback capability	■	■	■	■
Auxiliary audio input jack ¹	■	■	■	■
Two USB ports and two USB-C ports ¹	■	■	■	■
HD Radio®	■	■	■	■
Steering wheel-mounted audio controls	■	■	■	■

Safety/Security				
Nissan Advanced Air Bag System with dual-stage supplemental front air bags with seat-belt and occupant-classification sensors ²²	■	■	■	■
Seat-mounted side-impact supplemental air bags for front- and rear-seat outboard occupants ²²	■	■	■	■
Roof-mounted curtain supplemental air bags with rollover sensor for side-impact and rollover head protection for front and rear-seat outboard occupants ²²	■	■	■	■
Driver and front passenger supplemental knee air bag ²²	■	■	■	■
LATCH System (Lower Anchors and Tethers for Children)	■	■	■	■
Tire Pressure Monitoring System (TPMS) with individual tire pressure display and Easy-Fill Tire Alert ^{35, 36}	■	■	■	■

DIMENSIONS/CAPACITIES/MPG

Exterior Dimensions – Inches	
Wheelbase	111.2
Overall length	192.5
Overall width/height	75.4/67.8
Track width	64.6

Interior Dimensions (front/rear) – Inches	
Head room	39.9/39.8
Head room with Dual Panel Panoramic Moonroof	38.1/37.8
Leg room	40.5/38.7
Hip room	55.4/55.2
Shoulder (room front/rear)	59.5/58.9
Step-in height	15.8/15.1

Capacities	
Seating capacity	5
Interior passenger volume (front/rear)	
Without moonroof	55.7/52.4
With moonroof	53.1/49.7
Cargo volume with rear seat up (cu. ft.)	
Without moonroof/with moonroof	32.1/31.1
Cargo volume with rear seat down (cu. ft.)	
Without moonroof/with moonroof	67.0/65.0
Fuel tank (gals.)	19.0

2020 EPA Fuel Economy Estimates ³⁷		
City/Highway/Combined MPG	FWD	AWD
V6	20/28/23	20/28/23

NISSAN ROADSIDE ASSISTANCE

Your peace of mind is on us. For 36 months or 36,000 miles, whichever comes first, your new Nissan vehicle is covered for the following:³⁸

- Flat-tire changes
- Trip Interruption benefits
- Jump starts
- Vehicle lockouts
- Emergency fuel delivery

Follow Nissan on:



visit NissanUSA.com/murano
PRINTED IN POLAND