



1963 **FORD TRUCK** RECREATION FLEET

FORD DIVISION

GENERAL SALES OFFICE

Ford Motor Company

ROTUNDA DRIVE AT SOUTHFIELD ROAD
DEARBORN, MICHIGAN

MAILING ADDRESS
P.O. BOX 1000, PLYMOUTH, MICHIGAN

Dear Friend:

I think you're in for some fun-filled, informative moments as you browse through this 1963 Ford Truck Recreation Fleet booklet. It presents an opportunity to add new four-season pleasure to your motoring.

Camper-type units you'll see here are a representative selection of the many units available to you through manufacturers and your Ford Dealer. All campers are designed to give you and your family the most vacation and week-end enjoyment throughout the year, at the lowest possible cost. Each one offers you a new concept of year-round fun that grows more popular every day.

With each member of this Ford recreation fleet, you and your family can tour anywhere, any season, in spacious home comfort . . . and for little more than the cost of gas. If you hunt or fish--for fun or for fame--you can drive your private lodge right in where the big ones are. Or, if you just like the great outdoors, our national and state parks offer millions of acres of scenic grandeur for your driving pleasure.

Your Ford Dealer will be glad to help you choose the camper-car or truck best for you. And you'll be pleasantly surprised when you discover how easily you can own the one you want! So plan to see your Ford Dealer soon.

Sincerely,

John F. McLean Jr.

John F. McLean, Jr.
Truck Marketing Manager

TABLE OF CONTENTS

	Page
Title Page	1
CONDOR COACH —Chassis by Ford (Six- or Eight-Sleeper)	2
Ford Econoline Van, Falcon Station Bus, Falcon Club Wagon with FORD CAMPER KIT	3
Ford Econoline Pickup with U.S. Royalite CANOPY TOP	4
Ford Econoline Van, Falcon Station Bus, Falcon Club Wagon with HOME CRUISER by Calthorpe	5
Ford F-250 with ROLL-A-LONG Sportster Body	6
Ford F-250 with EL DORADO Camper Coach	7
Ford F-250 with ALASKAN Camper Body	8
Ford F-250 with DREAMER Coach Body	9
Ford F-250 with PULLMAN Camper Body	10
Ford F-250 with TRAVELODGE by Pickwick	11
Ford F-250 with TRAVEL QUEEN Camper Coach	12
Ford Econoline Van, Falcon Station Bus with SPORTSWAGON CAMPER Conversion Unit	13
Tips that add more fun to your camp outing	Back Cover

1963 **FORD TRUCK** RECREATION FLEET



IMPORTANT NOTE: Models illustrated in this booklet are only representative of many available to you through individual manufacturers and through your local Ford Dealer. Mention of these models, other than Ford components, does not constitute an endorsement or guarantee by the Ford Motor Company.

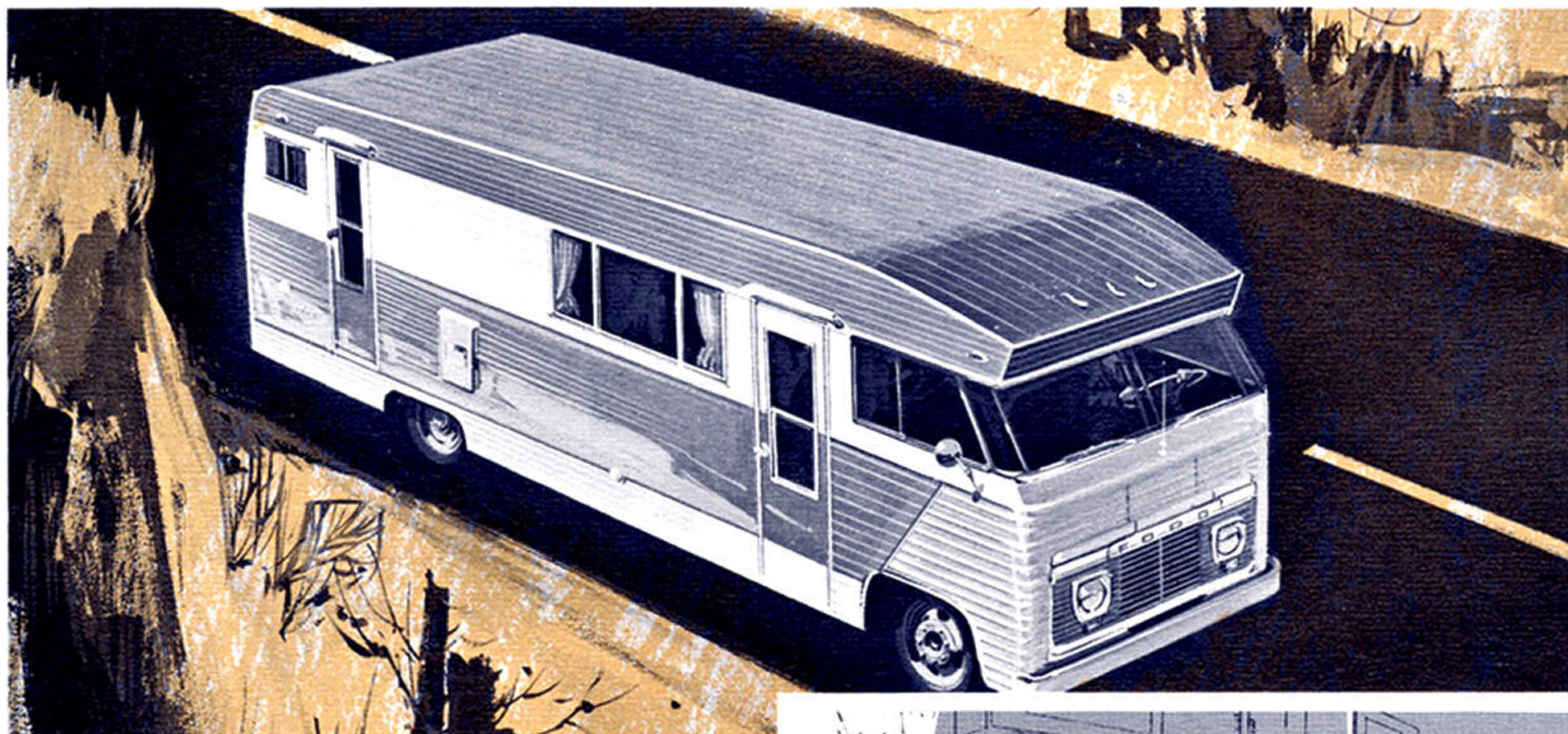
CONDOR COACH

(Six or Eight Sleeper) Chassis by **FORD**

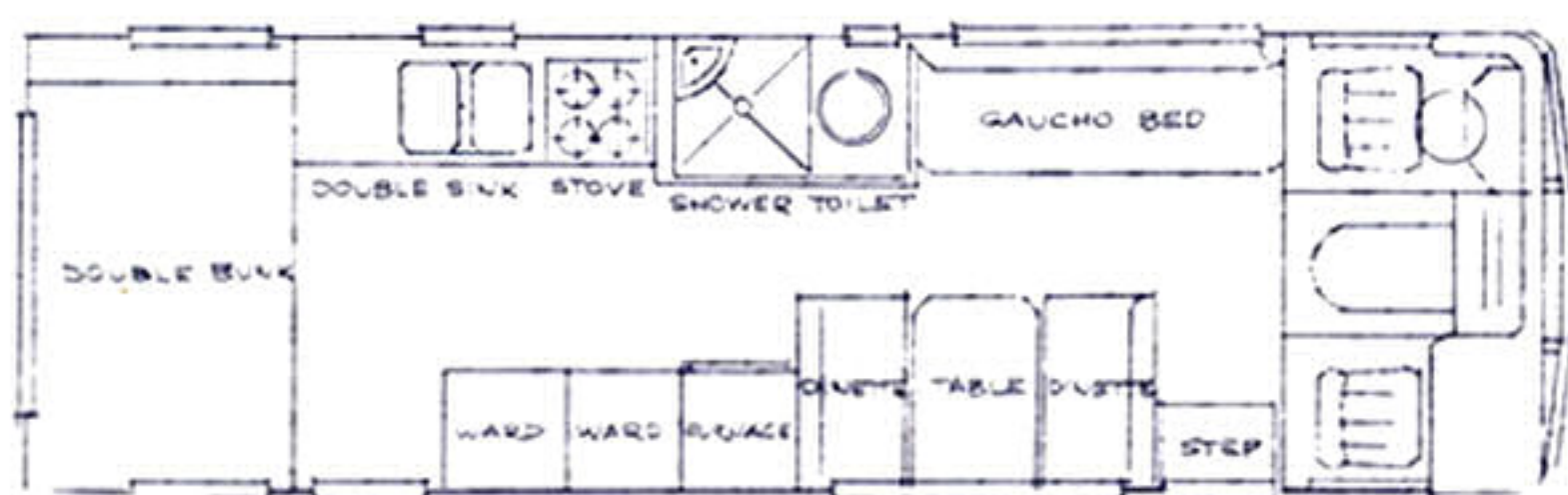
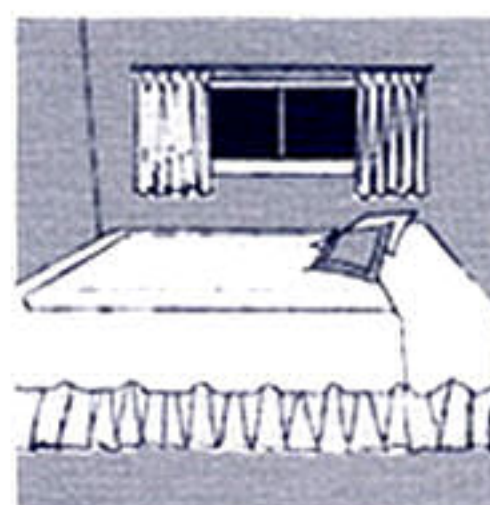
The fabulous new six- and eight-sleeper Condor Coach, as lavishly equipped as house trailers costing thousands more, is built on a rugged Ford 178-inch chassis. Overall length is 26 feet; height ground-to-roof, 9' 2"; interior ceiling height, 6' 4".

In addition to vacation and week-end travel, the Condor is remarkably suited as a mobile business office, showroom or laboratory; for dental or medical use; or movie, television and radio use as a rolling studio or dressing room. Designs for other applications may be ordered through your local Ford Dealer.

STANDARD FEATURES • Customized interiors, accommodations • Ford's 292-cu. in. HD V-8 engine with Cruise-O-Matic transmission • Safety-approved gas furnace, thermostatically controlled, including 28-lb. gas bottles, automatic gas regulator • Vinyl and cotton dacron upholstery, choice of colors • Aero-crimped, baked enamel, lifetime aluminum exterior—choice of colors • E-Z slide windows, locking, on driving compartment sides • Tinted, laminated safety glass in driving compartment • Laminated, safety glass windows (with screens) throughout • Complete bath facilities and separate shower (30-gal. fiberglass septic tank, 30-gal. fiberglass water tank) • Counter top kitchen sink, storage drawers • Kitchen cupboards and large wardrobes • Dinette (converts into bed) • 4-cu. ft. gas refrigerator • 4-burner gas stove with oven • Tiled floors, draperies • Stove hood and vent fan, two ceiling vent fans • Driving compartment table • Electric windshield wipers • Highway and clearance lights • Inside and outside rearview mirrors(3) • Driver compartment seats, adjustable bucket type with safety belts • Radio with rear speaker • Heaters and defroster • Electric clock • Vacuum power brakes • 7.50 x 17 8-ply tires—dual rear wheels • Fully undercoated • Directional signals • Built for park hookup • Jack and wheel wrench • 12-volt electric pressure water system • Heavy-duty shock absorbers, front and rear • 12-volt and 110-volt individual lighting systems **OPTIONAL FEATURES** • Electric hot water heater • Gas hot water heater • Mark IV air conditioner • Electric powerplant, push-button starting, vacuum cooling, 110-volt, 2000-watt, to run full range of appliances



MODERN KITCHEN—a delight to housewives—features 4-burner gas stove (glass oven door and broiler), 4-cu. ft. gas refrigerator, double sinks, ample storage space, vented stove hood. **FULL-SIZE DOUBLE BED**—and convertible dinette and Davenport seats—sleep six comfortably. A 48-in.-wide bed (optional) helps Condor sleep eight. Blankets, linen store under bed. **ATTRACTIVE DURABLE DINETTE** seats four, has formica table top, vinyl-covered seats. **COMPLETE BATH FACILITIES**—with formica walls and ceiling—insure maximum privacy and comfort.



FLOOR PLAN

FORD ECONOLINE VAN—FALCON STATION BUS FALCON CLUB WAGON WITH FORD CAMPER KIT

Compact Camping Home at Lowest Cost!

Just about everything you need to enjoy outdoor living is contained—or can be stored—in this new Ford Camper unit. Standard kit includes seats, cushions, table and utility shelf. Available as an option are two storage cabinets and a large wardrobe.

STANDARD FEATURES • Two, large, box-type seat benches, sturdily constructed of handsome top-grade $\frac{3}{4}$ -in. birch plywood, finished in clear lacquer—store bedding and linens • Four-inch foam cushions (brown or aqua) with one side covered in white vinyl for extra serviceability • Table assembly with formica top • Utility shelf mounts on side door as table for camp stove or night stand

OPTIONAL FEATURES • Storage-over-battery cabinet, stores dinnerware • Counter-top cabinet, stores bulky items (camp stove, portable ice chest) • Wardrobe cabinet—extra space for clothing

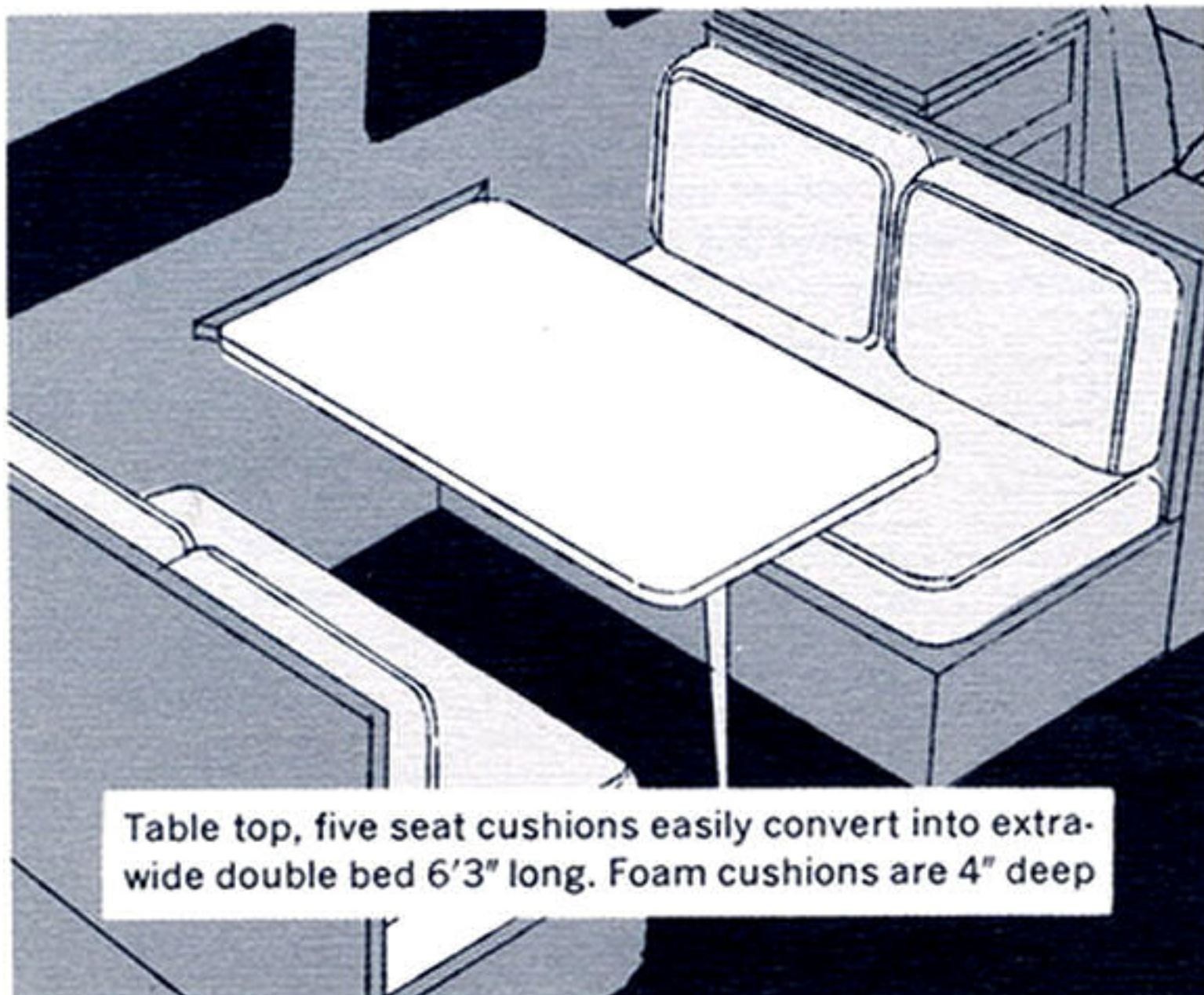
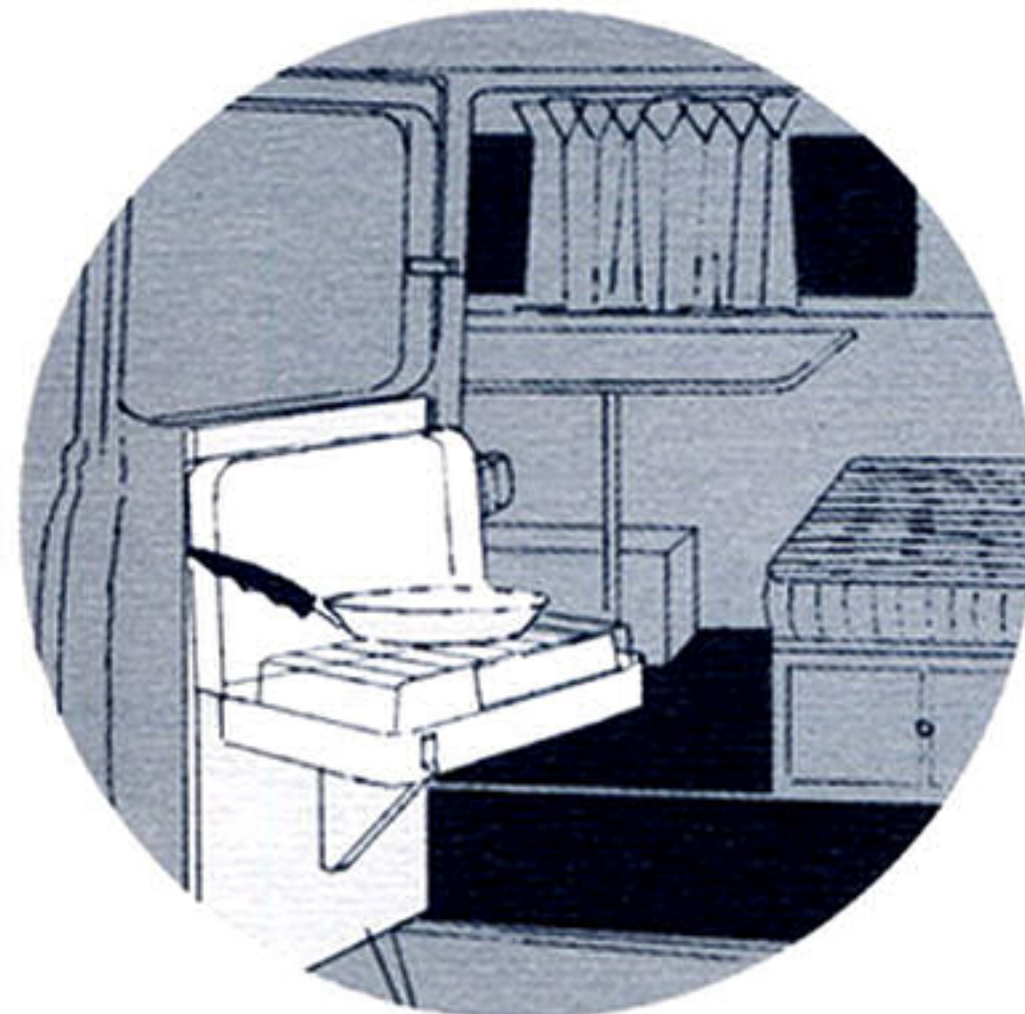


Table top, five seat cushions easily convert into extra-wide double bed 6'3" long. Foam cushions are 4" deep

FORD CAMPER KIT installed complete in Ford Econoline Van



FORD ECONOLINE PICKUP WITH U.S. ROYALITE

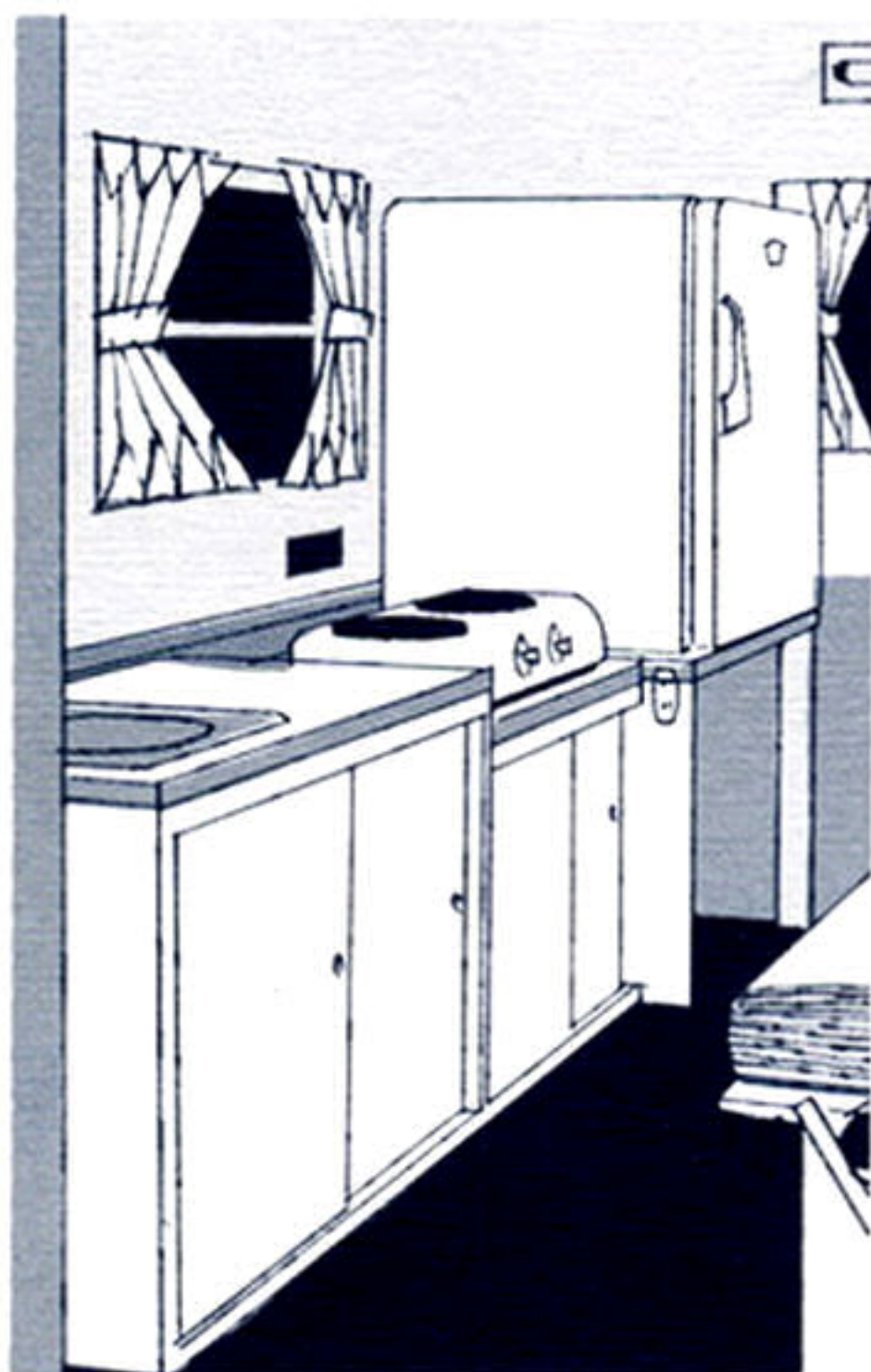
CANOPY TOP

*Makes your pickup a
"Camp-Convertible"*

STANDARD FEATURES • Canopy Top, white exterior, interior colors—aqua, coral, white, black, and tan • One insulated jalousie rear door with screen • Two jalousie side windows with screens • One permanent front window for rear visibility • Six attaching bolts

Now any '63 Ford Econoline pickup owner can convert his workhorse into a week-end or vacation pleasure craft with the U.S. Royalite CANOPY TOP. Two people can secure this unit into place in just a matter of minutes. It removes easily to free the truck for other work.

Inside the Canopy Top is ample room for two cots, a portable stove and icebox. It's cool, comfortable, insulated well against noise and heat, and well-ventilated with louvered windows.

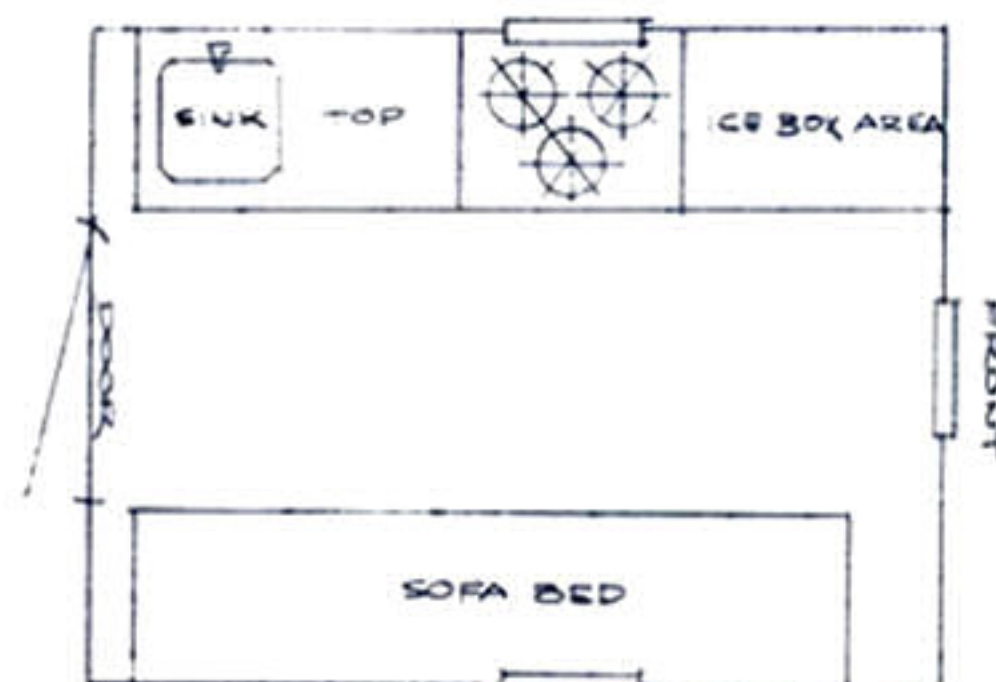


Ford Econoline Canopy Top comes in Walk-in or Cab-height sizes. Rear door, screened windows and hold-down attachments are built in. Interior can be fitted out with beds, stove, sink, etc., to meet your needs.

OPTIONAL FEATURES • Sofa bed (39" x 72"), storage underneath • Waterproof rubber rug for floor in sleeping area • Window curtains • Clothes rod for clothes on hangers • Screens on driving compartment windows • Butane tank, filled, 20-lb. capacity • Butane tank holder, piping, gas regulator • Two-burner gas range • Stainless steel sink • Icebox—75-lb. capacity • Multi-unit cabinet (19" x 45" x 28½") with built-in upholstered seat • Aluminum water tank, 12-gal. capacity, hand pump • Vinyl-trimmed, foam rubber seat for motor housing • Mattress, 3-in. Koolfoam, converts front seats into cross bunk 63 inches long • Campkitchen stove, self-contained gas supply, and dishes and silverware for four, carrying case • Power converter for 110-volt, 275-watt capacity to run radio, TV, electric razor, etc. • Air conditioning unit 21,000 BTU • Two Pullman hammocks for clothing • Air exhaust roof ventilator, power driven

Walk-in Height Canopy Top
(74" high, 67" wide, 84" long—223 cubic feet)

Cab Height Canopy Top
(59" high, 67" wide, 84" long—195 cubic feet)



FLOOR PLAN

FORD ECONOLINE VAN FALCON STATION BUS FALCON CLUB WAGON WITH HOME CRUISER BY CALTHORPE

*2-in-1 Vehicle, Licensed as
Station Wagon, Keeps Wagon
Identity, Doubles its Utility!*

The Ford Econoline, Falcon Station Bus and Club Wagons convert ideally into a Calthorpe Home Cruiser that sleeps three adults, three children. One standout feature is the sky-view top, with screened windows, which raises easily when you twist a handle and push upward. Colors available: Baffin Blue, Sandshell Beige, Corinthian White, and Turquoise—plus other colors available through your local Ford Dealer.

STANDARD FEATURES

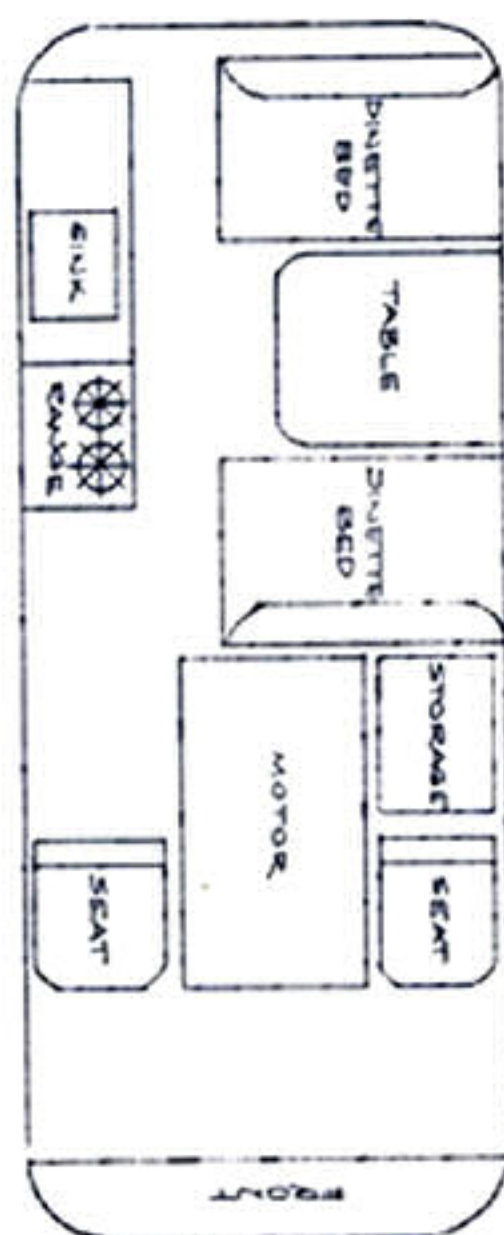
- Elevating roof with dome lights, top bunk
- Divan, converts to dinette or double bed
- Beds across rear and front compartments
- Lockers and storage cabinets
- Dustproof garment bag
- Kitchen unit (sink, stove, icebox)
- 12-volt transformer
- Ford vinyl cushions
- Water storage
- 110-volt outlet
- Interior lights
- Table
- Window shades (white)
- Screened dome
- Portable toilet

OPTIONAL FEATURES

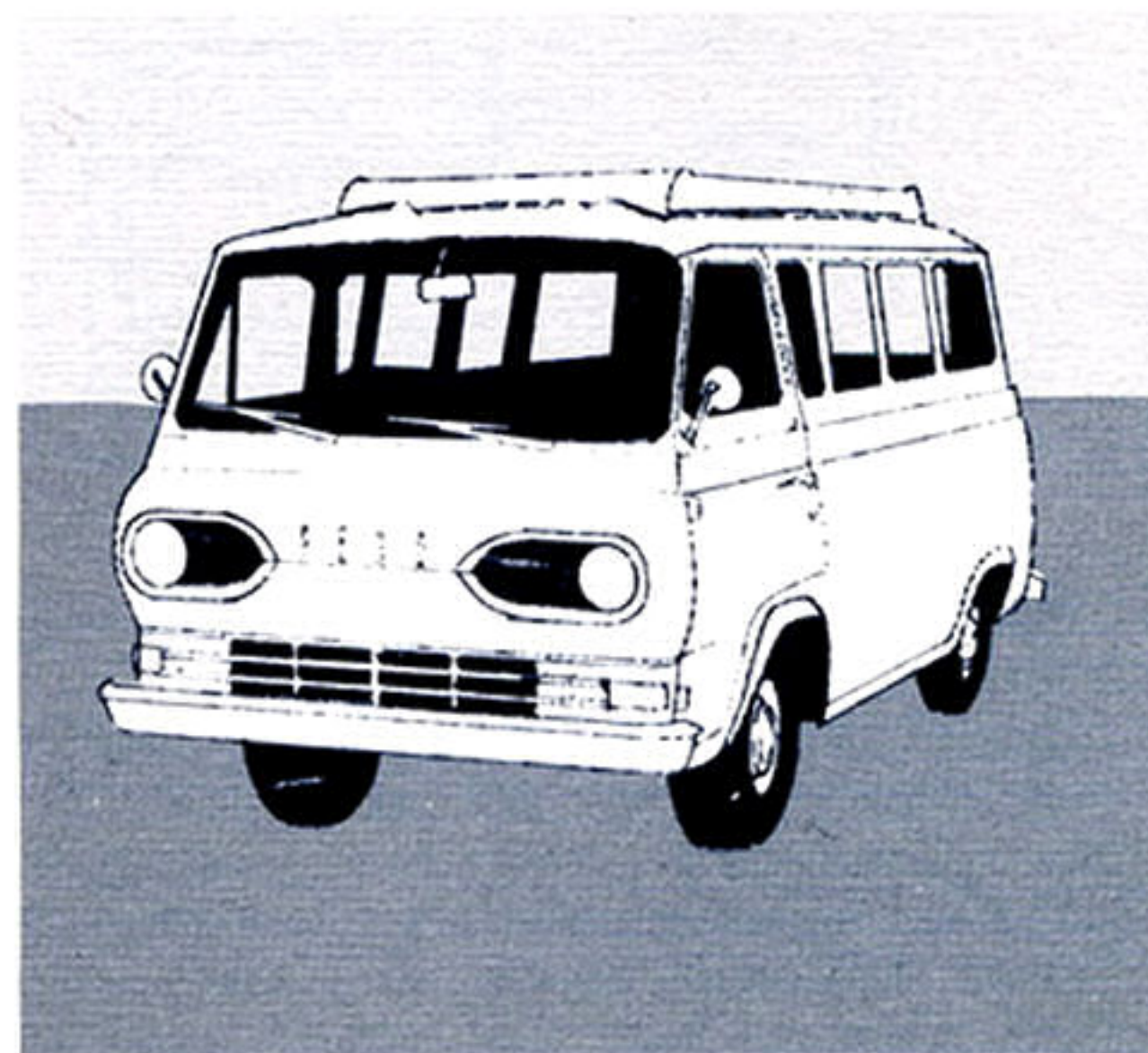
- Combination electric-gas refrigerator
- Flush toilet
- Therm'x auxiliary heater
- Porta-shower
- Fiberglass window screens (4)
- Aluminum window screens
- Front luggage rack
- Rear luggage rack

FRONT SLEEPING PLAN—dinette seats transform into comfortable double bed. Blankets, linen store in lockers beneath beds. Two other beds, single bed in top, enable Home Cruiser to sleep three adults, three children.

FLOOR PLAN



FORD ECONOLINE with Elevating Top raised



FORD ECONOLINE with Elevating Top lowered

FORD F-250 WITH *ROLL-A-LONG* SPORTSTER BODY

Mounted directly to chassis

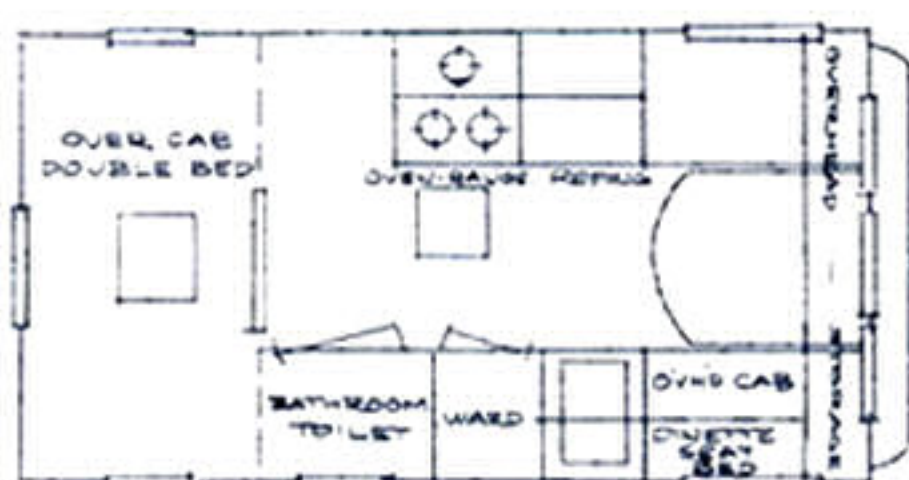
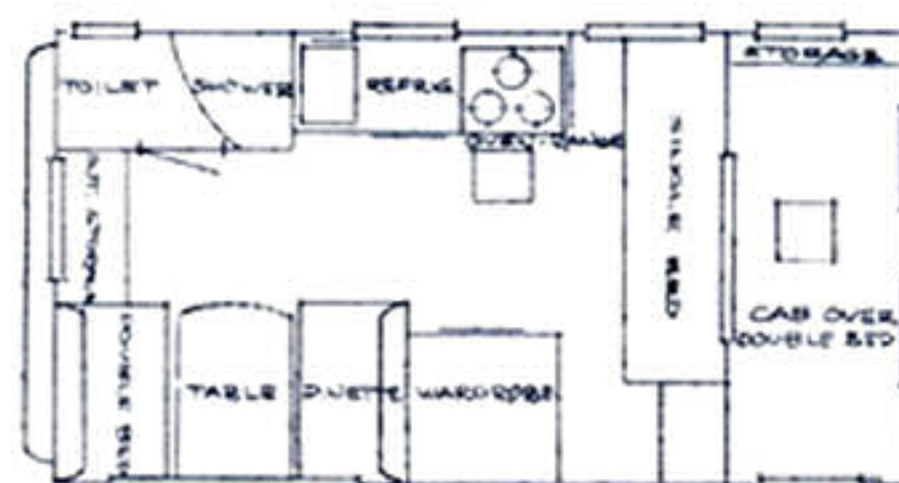
The Roll-A-Long Sportster is mounted directly to the chassis of the F-250 for greater stability, a lower center of gravity and proper weight distribution between cab and axle. Each model available (Custom, Deluxe, Standard) rides comfortably, is easy to handle, economical to drive and sleeps six. Sturdy construction features all-aluminum exterior, plywood interior, louver windows with screens and fiberglass-insulated body.



Roll-A-Long Sportster Custom on Ford F-250 Chassis

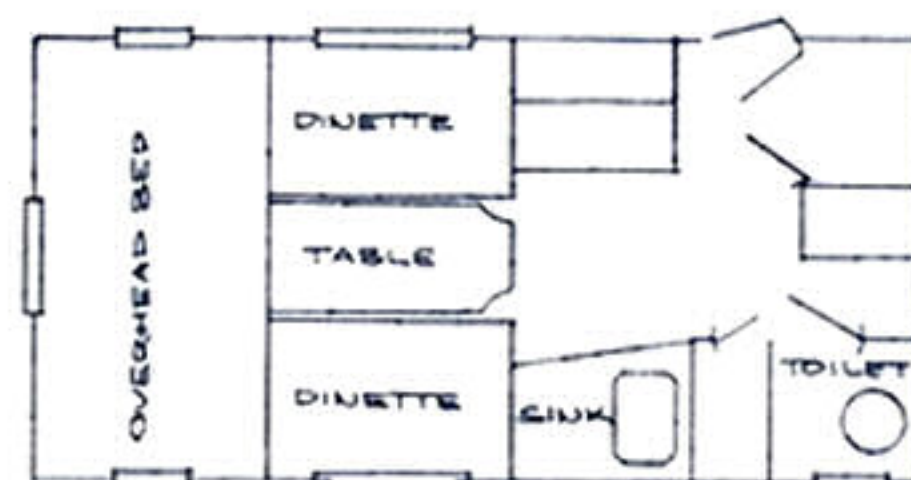
CUSTOM MODEL FEATURES

- Full shower and flush toilet • Gas hot water heater, gas light • Gas refrigerator, twin gas tanks • Gas oven range, oven control • Extra-large pressure water tank • 110-volt and 12-volt light fixtures • Large innerspring mattress over cab • Front couch, plastic foam • Rear dinette bed, plastic foam • Designed decor and drapes, curtains • Full-length wardrobe mirror • Plastic-top folding table



DELUXE MODEL FEATURES

- Pullman dinette (changes to 43" x 74" bed) • Over-cab innerspring bed (48" x 74") • 12-gal. pressure water tank • Butane light, tank and regulator • 3-burner range with oven control • Butane gas refrigerator • 6- and 12-volt plus 110-volt lights • Drapes and curtains included • Ventilating and louver windows (7) • Roof vents, 14" x 14" (2) • Large, full-length double wardrobe • Large silver and linen drawers • Food and utensil cupboards • Outside access trunk door under seat



STANDARD MODEL FEATURES

- Outside trunk door to interior storage compartment • 12-gal. water tank and pump • Butane light, tank and regulator • 3-burner butane stove • 6-volt, 12-volt, 110-volt electric lights • 50-lb. insulated icebox • Drapes and curtains included • Ventilating and louver windows (7) • Roof vents, 14" x 14" (2), adjustable

OPTIONAL FEATURES (Standard Model Only)

- Pressure water system • Full oven range • Gas refrigerator

FORD F-250 WITH *El Dorado* CAMPER COACH

This Honorbuilt camper coach is luxuriously styled, harmoniously colored and well-constructed for the enjoyment of sportsmen and their families who love to fish, hunt, or just follow the great outdoors. All Honorbuilt camper coaches—including the El Dorado—are available at surprisingly low prices through your local Ford Dealer.

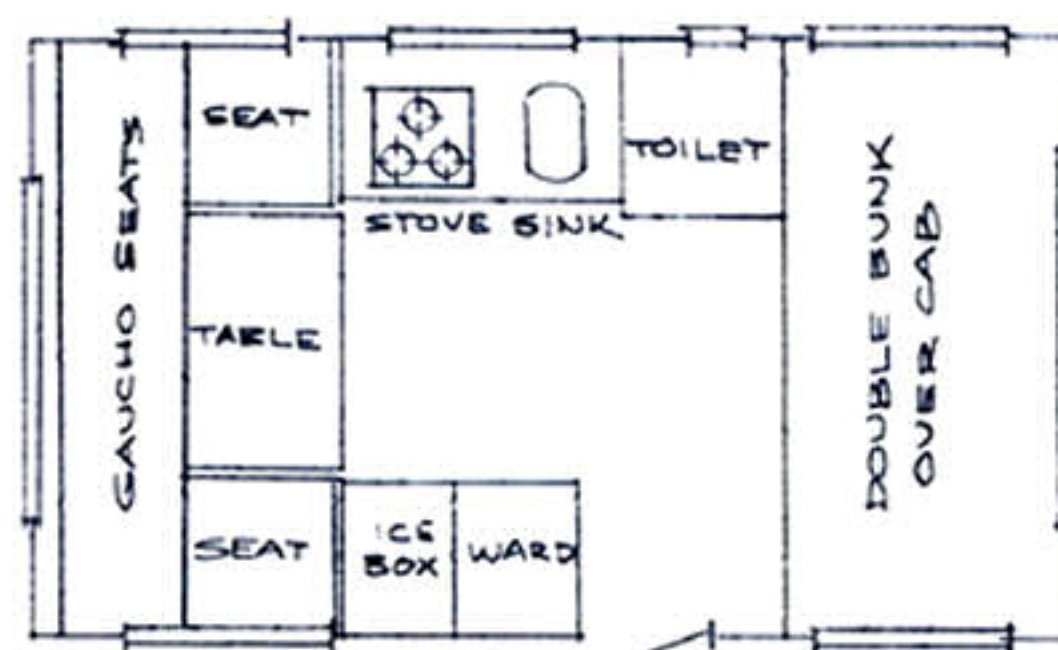


STANDARD FEATURES

- Exterior, prefinished aluminum in polar white
- Fully undercoated
- Drip molding design guards against leaks
- Interior, birch or prefinish polyclad paneling
- Insulated, double walls
- Nine windows, side louver windows—if desired
- Dinette converts into bed for two
- Holiday stove, top burner controls, thermostatically controlled oven
- Interior—color-coordinated seats custom-covered in naugahyde fabric
- Icebox—75-lb. capacity
- Water tank—plastic-lined, 12-gal. with marine pump
- Permanent overhead bunk with innerspring mattress
- Formica sink and table
- Amply lighted inside on 110-volt and 6-volt circuits
- Butane tank, regulator and fittings
- Storage and cabinets
- Butane light

OPTIONAL FEATURES

- Butane refrigerator
- Intercom
- Bumpers
- Butane heater
- Toilet



BASIC FLOOR PLAN

Choose From Over 30 Different HONORBUILT Models

FORD F-250 WITH ALASKAN CAMPER BODY

Available in 8-ft. and 10-ft. models, the telescopic ALASKAN Camper unit raises hydraulically for walk-in height, lowers hydraulically when traveling to cut wind resistance. Dining area converts to sleeping area, canvas bunks (optional) available for extra sleeping room.

STANDARD FEATURES

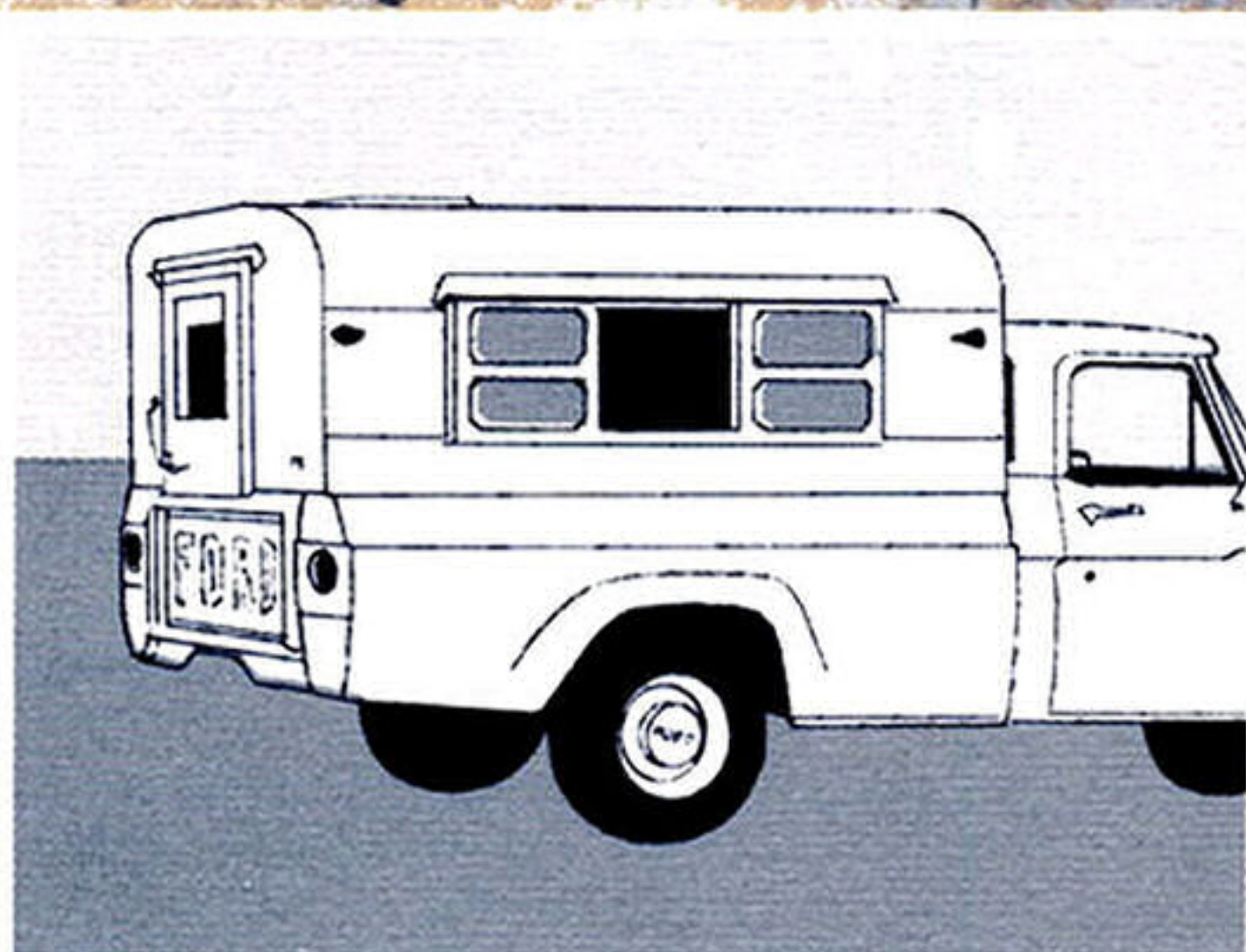
- Soft 4-in. Polyfoam seat cushions, convert to double bed 49" x 75"
- Sink with stainproof drain board
- Faucet for external water supply
- Easy-pumping faucet for camper's own water tank
- 3-burner table-top propane stove
- Ample drawer, cabinet space, cutting board
- Plywood, lacquer-finished interior
- 6-, 12- and 110-volt dome lights
- Safety glass picture window
- Six windows with roll shades
- Stain-proof table top
- Floor drawer for bedding
- 75-lb. icebox
- Generous wardrobe with pull-out clothing hanger
- Vinyl floor
- Durable aluminum exterior, white, insulated top

OPTIONAL FEATURES

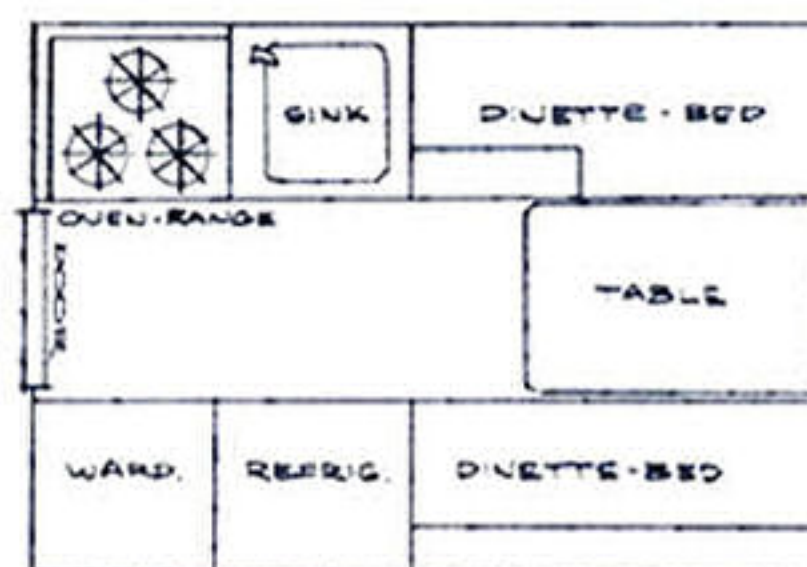
- Canvas bunks for extra sleepers
- Propane refrigerator
- Boat rack
- Top stove oven
- Doors for extra storage under bed or seat area



ALASKAN Camper, raised, for stand-up height when parked



ALASKAN Camper, down, for travel (less wind resistance)



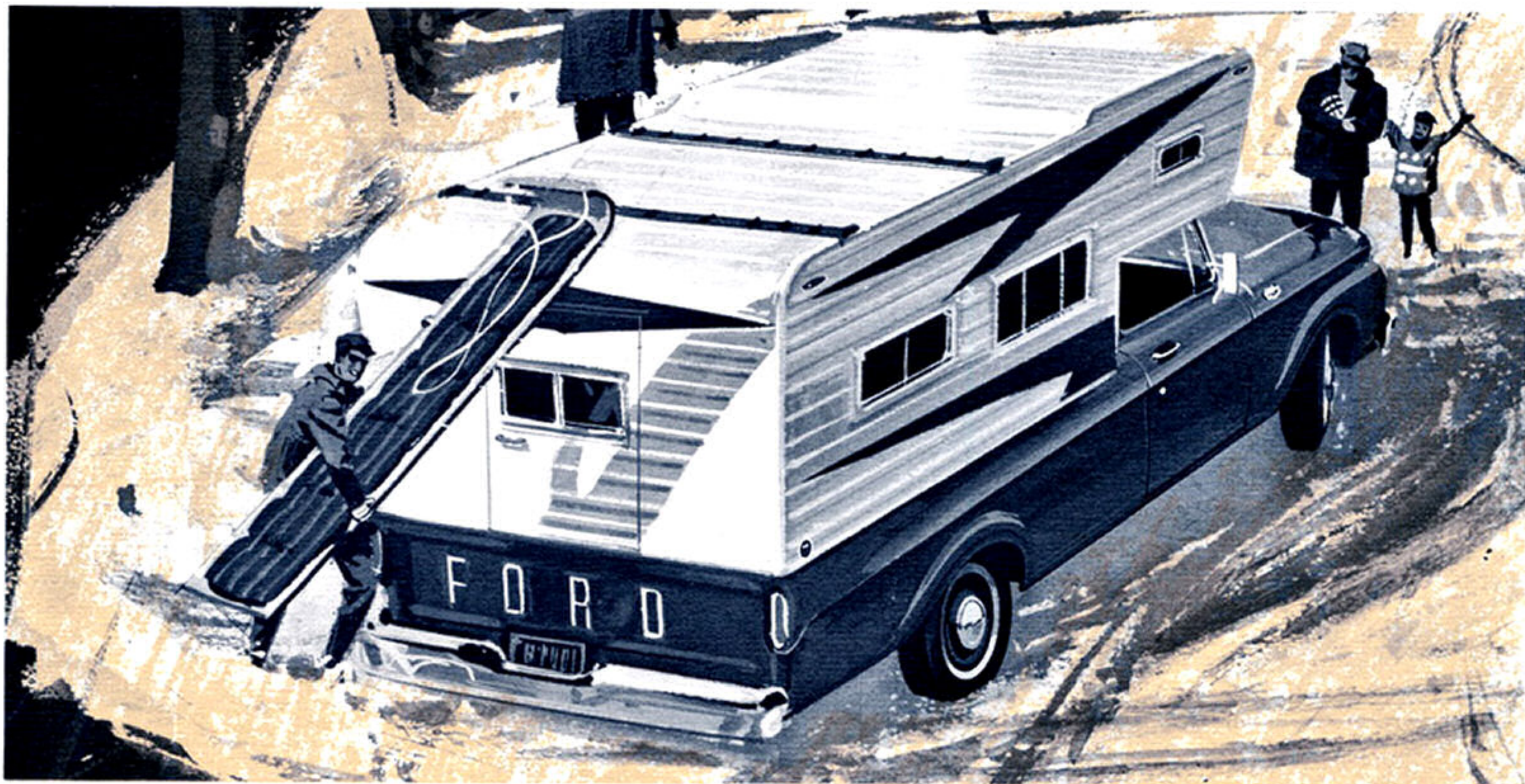
BASIC FLOOR PLAN

FORD F-250 WITH DREAMER COACH BODY

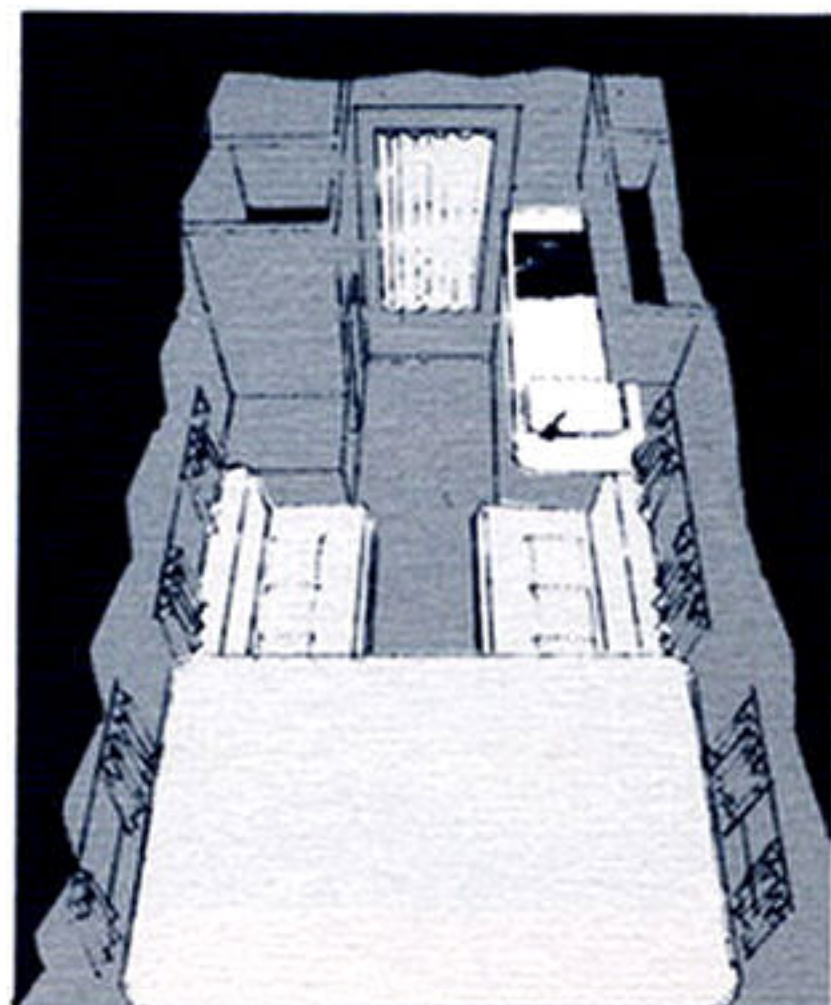
You have a choice of four basic DREAMER Coach Body models, each of which can be customized to fit your own requirements. Models come in 8 ft. or 10 ft. sizes and are highly styled to contain all the home comforts desired. Let your Ford Dealer help you choose the DREAMER Coach that's right for you!

STANDARD FEATURES • Large picture window with 2 slide openings • Five large crank-out windows • Extra-wide full glass entrance door with screen • 6-in. innerspring, reversible cushions in choice of 9 colors • Spacious wardrobe and cabinets • Ample storage under cushions and false floor • Fully insulated with 1-in. Spunglass, with Kraft seal • 3-burner built-in stove, coppertone or white • 75-lb. icebox, coppertone or white • 5-gal. butane tank with fittings • 15-gal. water tank • Sink and water pump, faucet for outside supply • First-grade Pabco inlaid linoleum • Curtains to blend with cushion color choice • Coach painted to match, and mounted on truck at no extra charge • Aircraft-type aluminum exterior

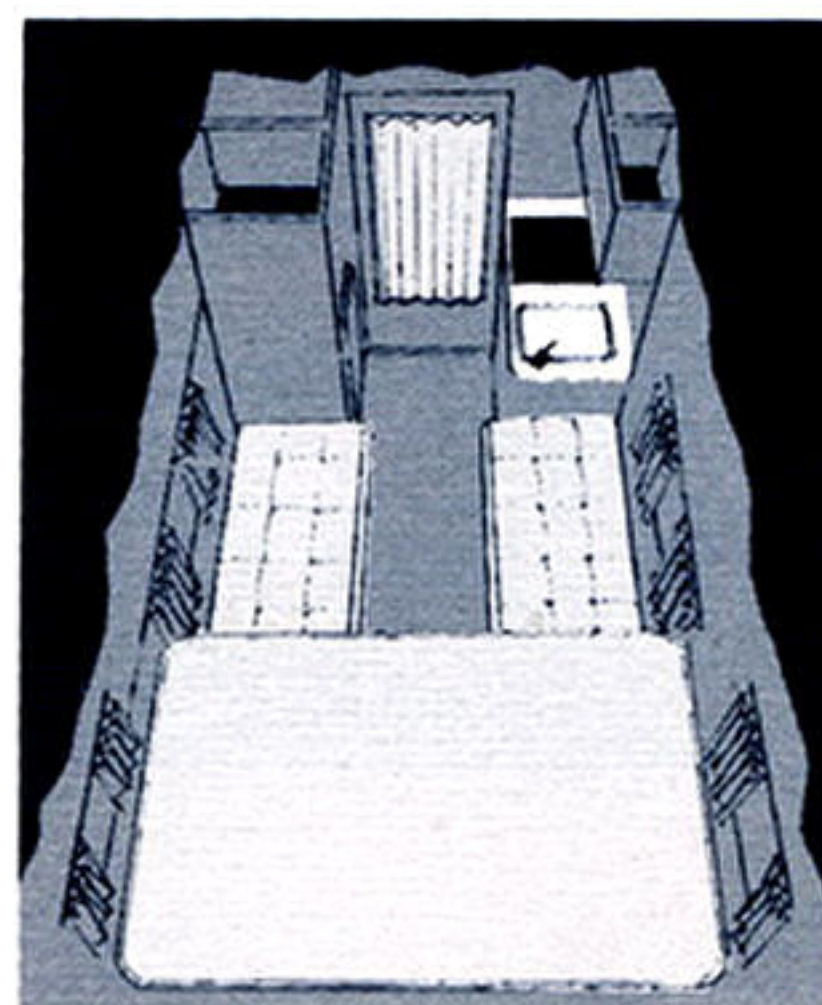
OPTIONAL FEATURES • Butane lights • Overhead bunks (canvas Navy-type) • Outside storage boxes • Portable toilet • Butane refrigerator • Oven-type stove with built-in control • Awning rails • Extra windows 6" x 18" • Extra cupboards • Extra bolsters for twin bed style • 48-in. mattress, plain ticking • Polyether mattress • Extra light • Fleetside doors for rear of units • Medicine chest • Double closet in Dinette model • Extra color for top • 4-cu. ft. butane refrigerator • Intercom • Telescoping bumper • Quickie jacks (set of two) • Complete bath, toilet, shower, hot and cold pressurized water supply • Add-A-Room, 8' x 8', canvas-type • Add-A-Room, 8' x 10', canvas-type



DREAMER 10-FT. DINETTE MODEL (basic floor plan)—comes complete with double bed over cab, spacious dinette (converts into double bed), built-in 3-burner plate, 75-lb. fiberglass icebox, generous storage space, birch interior, hand-tailored custom upholstery.



DREAMER 10-FT. TWIN BED MODEL—ideal for large family. Twin beds convert into king-size bed, 6'3" x 6'6" long. Also, large double bed over cab, choice of birch or cedar interiors.



FORD F-250 WITH TRAVELODGE BY PICKWICK

Move Out of Doors in a TRAVELODGE!

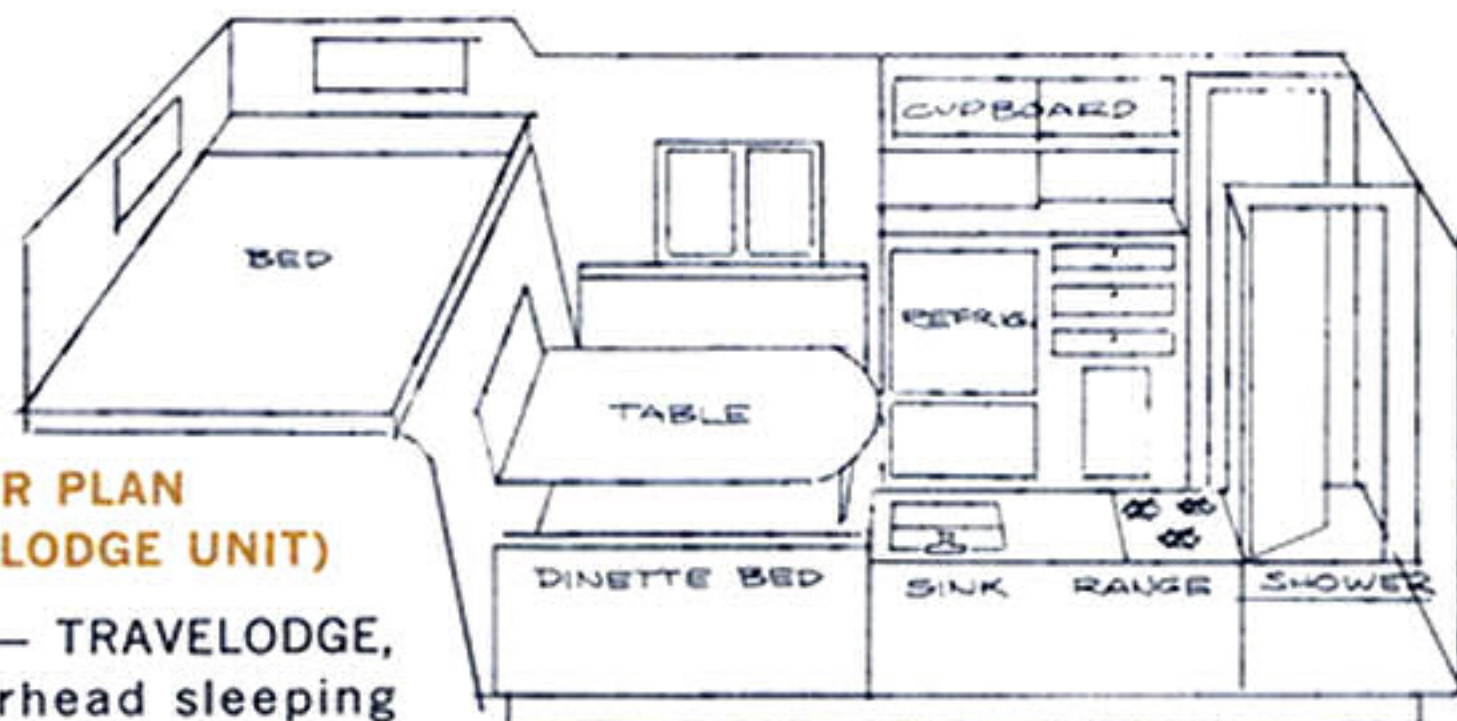
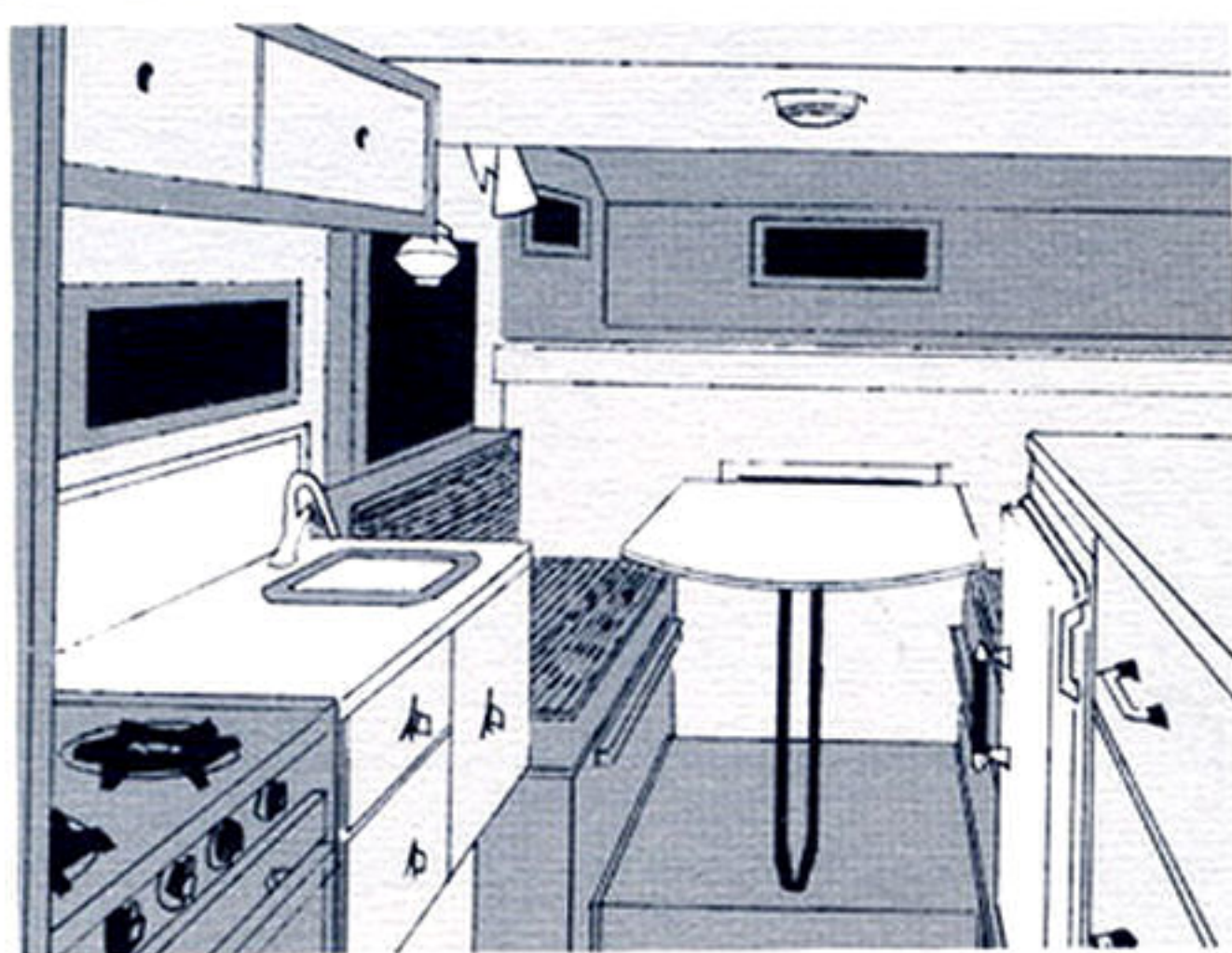
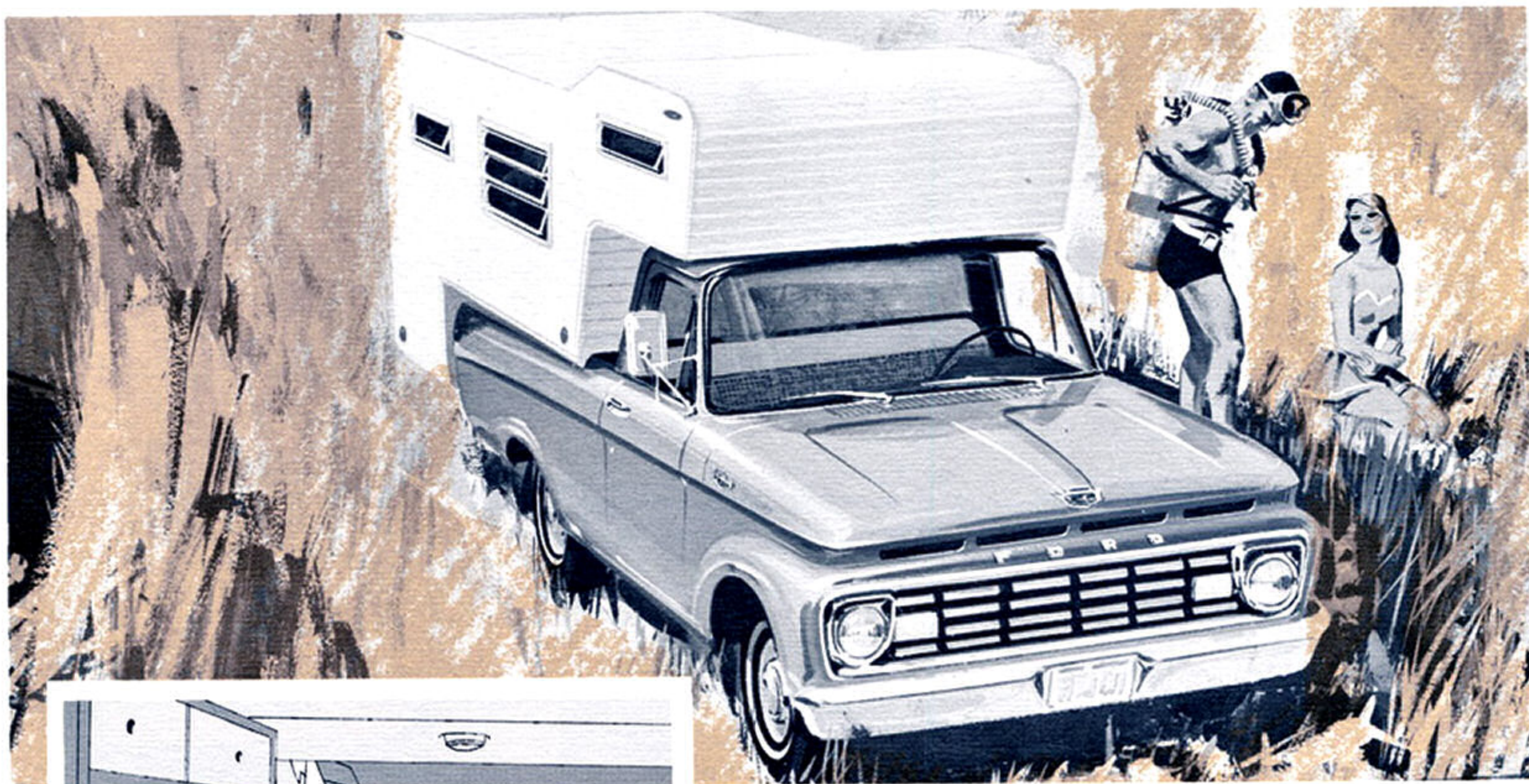
This portable home can be mounted on almost any Ford pickup, and with jacks, removed to release the truck for other work. It features a white pre-painted aluminum exterior, quality-finished wood interiors with eating-sleeping accommodations for four to six, ample storage and closet space. Your local Ford Dealer can tell you how easy it is to own a TRAVELODGE.

STANDARD FEATURES

- Seven windows, gear-type crank, all-screened
- Combination screened aluminum door
- Fiberglass insulation throughout
- Fully wired, three 110-volt fixtures
- Floor linoleum
- Tables, work spaces covered with Consoweld
- Dinette (converts into double bed)
- Two-tone, quality-finished wood interiors
- Overhead vent
- Butane stove
- White porcelain sink, marine-type pump
- 12-gal. water tank
- Built-in icebox
- Large closet (two in 10-ft. unit)
- Four drawers, seven storage compartments
- Aluminum exterior

OPTIONAL FEATURES

- Butane light
- Mattress 48" x 74" for over cab area
- Additional cots for children
- Butane refrigerator, 2-cu. ft. capacity
- Complete set of jacks, legs and brackets
- Portable toilet
- Oven-type stove with automatic control
- Butane wall furnace
- Outside storage compartment (10-ft. unit only)
- 12- or 6-volt dome lights
- Pressure water faucet, installed
- Two-tone paint
- Mounting charge
- Awning complete
- Curtains and rods
- Intercom
- Radio (12-volt or battery-operated)
- Extra roof vent
- Skylite dome vent
- Stove ventilating hood
- Adjustable bumper



**FLOOR PLAN
(10' TRAVELODGE UNIT)**

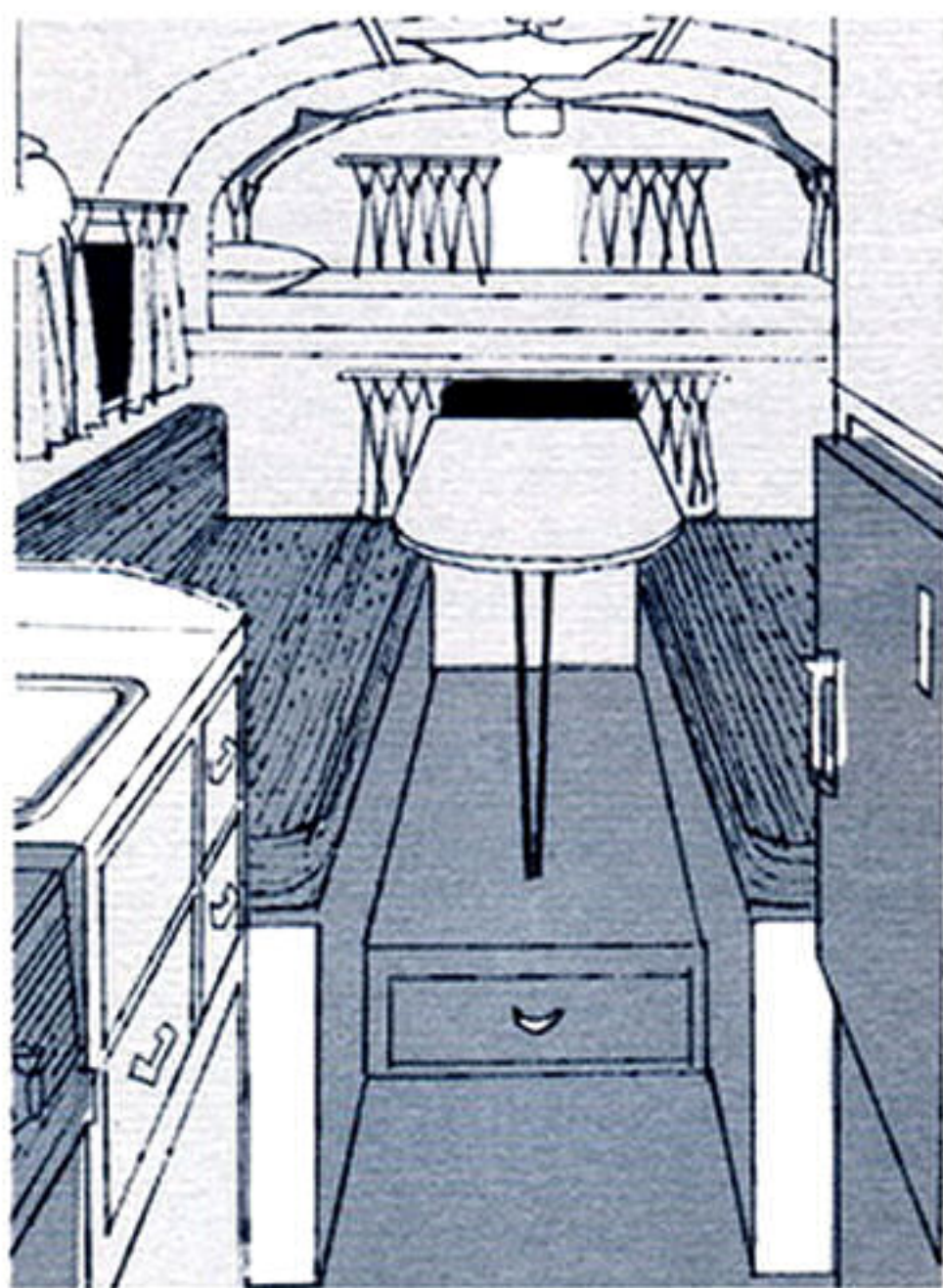
Interior view — TRAVELODGE, showing overhead sleeping area, convertible dinette, compact kitchen

CHOICE OF SEVEN MODELS!

FORD F-250 WITH *TRAVEL QUEEN* CAMPER COACH

An unusually fine-crafted series of seven camper coach models by America's largest producer of quality campers. It offers full-family (4 to 6) roominess, distinctive styling, and a lavish array of home-comfort features standard at no extra cost.

Travel Queen's rounded roof design, less affected by wind resistance, reduces road sway, contributes to driving economy and safety. Special jacks (standard) enable coach to be removed easily and stored. Interiors are lacquer-finish natural birch. Curtains and upholstery are in contrasting shades of red, brown and gold. Exterior is white enamel with gold-stripe trim. Other exterior colors optional.



Interior view of dining-sleeping area, ice-box and full-length mirror in front of storage closet

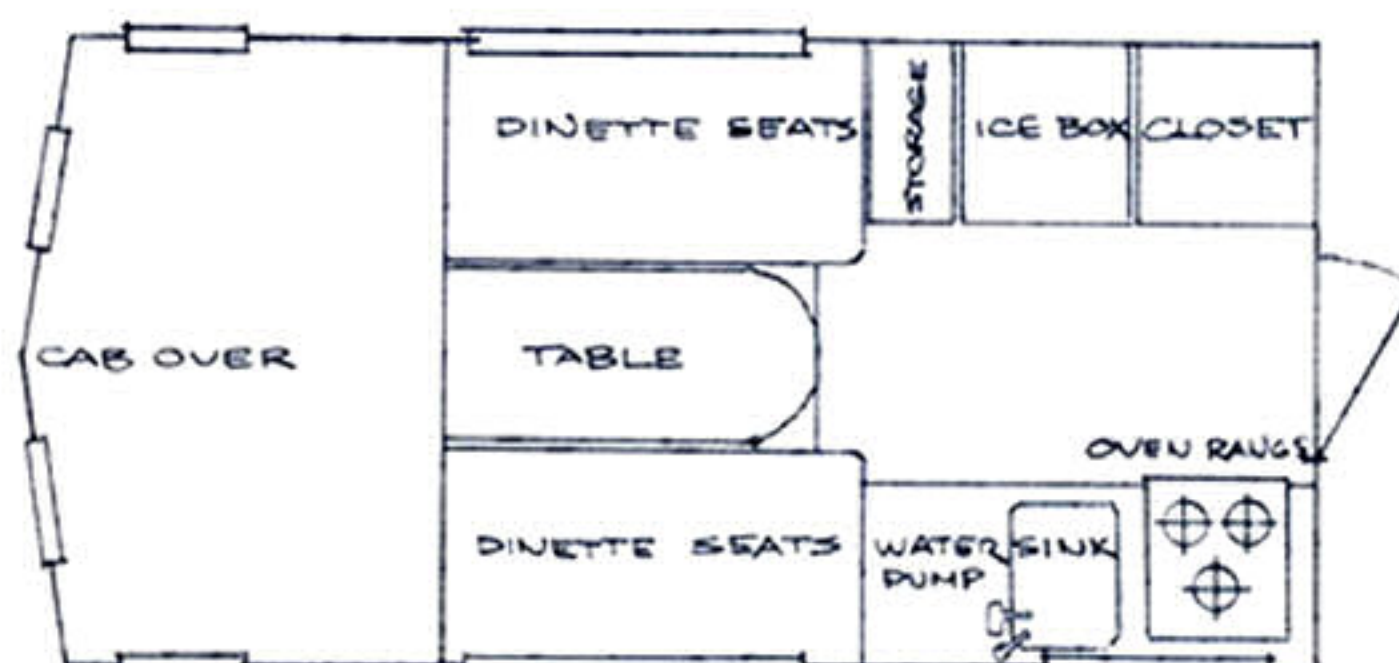
TRAVEL QUEEN camper on Ford F-250 Truck



STANDARD FEATURES • Built-in oven stove with vented hood • Porcelain sink with stainless steel body rim • Built-in 100-lb. icebox • 16-gal. glass-lined water tank, suction pump • Butane light • Aluminum splash panels behind stove and sink • "Nev-Mar" formica-type galley and dining tops • Built-in 5-gal. butane tank, regulator, fittings • Curtains and rods on all windows and door • Hammertone-finish door hardware • 4-in. foam pads in dining, sleeping areas • 6- or 12-volt system, two lights (fuses) • 110-volt system with 15-amp. breaker and 10-ft. extension cord, two lights with plug outlets • Amber clearance lights (front of camper) • Two 6-in. directional, stop, clearance lights (rear) • Choice of eight floor plans • Insulated floor with inlaid linoleum • Fully insulated walls, ceilings (fiberglass) • Ample cabinets, closet storage • Gear-operated windows with screens • Heavy-gauge aluminum exterior • Two 14" x 14" standard vents • Chrome handrail eases entry, exit • Aluminum rear door with large glass/screen for rear visibility • Fully undercoated coach • Special jacks to lift coach on or off truck body, and store camper • Full length mirror **OPTIONAL FEATURES** • Refrigerator, combination electric-butane, 2-cu. ft. or 4-cu. ft. capacity • Heater, installed

BASIC FLOOR PLAN

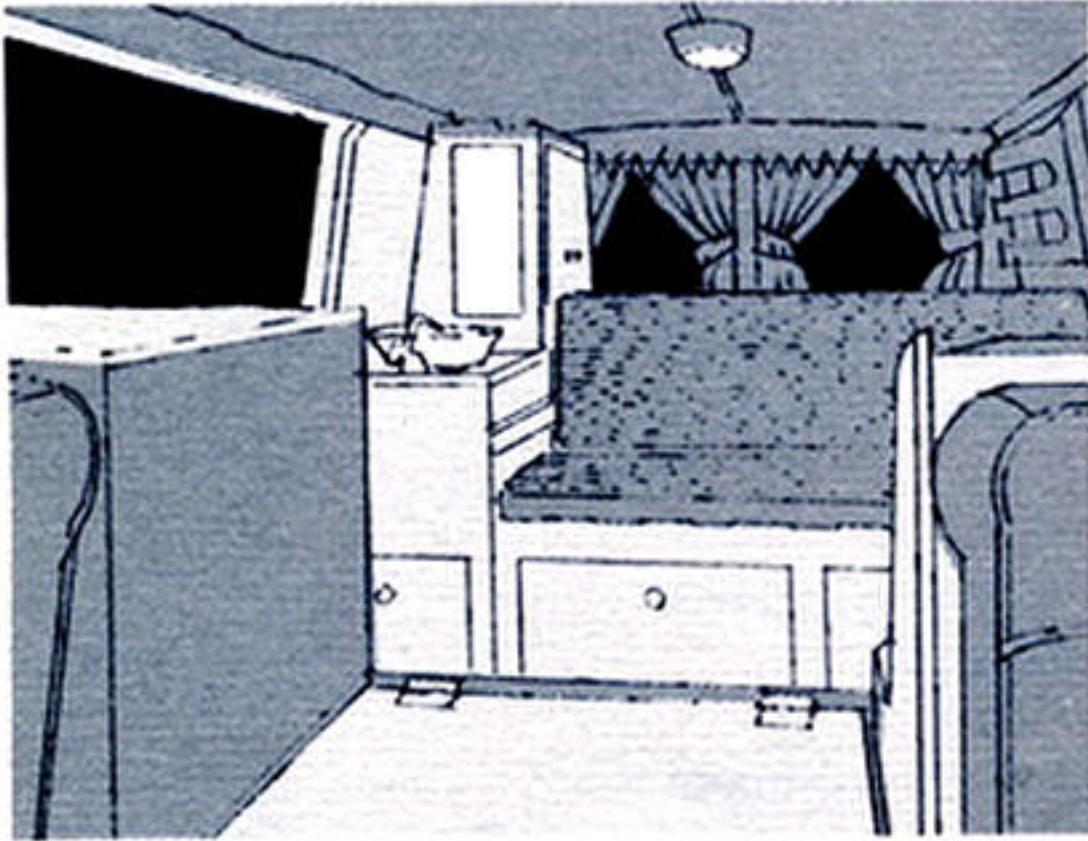
Your local Ford Dealer can help you select the floor plan best for you



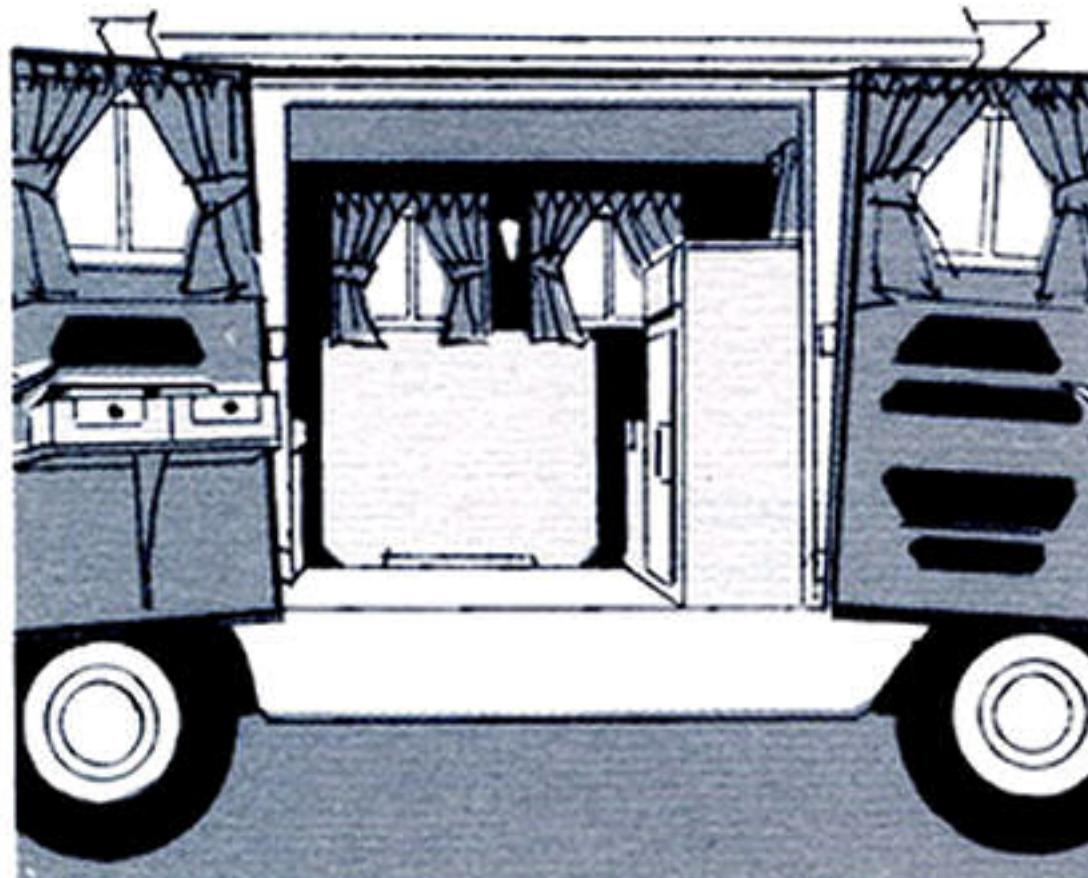
FORD ECONOLINE VAN—FALCON STATION BUS WITH SPORTSWAGON CAMPER CONVERSION UNIT

This Sportswagon camper unit transforms the Ford Econoline or Falcon Station Bus into a home-on-wheels that's especially comfortable. Dining area converts to double bed, and with 60-in. bed over engine cover and sling bed, sleeping accommodations for two adults and two children are provided. Optional cabana tent or awning tent provides additional camping room. Interiors attractively finished in birch paneling, red or turquoise upholstery, plus matching curtain materials.

STANDARD FEATURES • 3-in. Polyfoam cushions, red or turquoise nylon or red vinyl upholstered • 15-gal. water storage tank • Ample storage for housekeeping needs • 50-lb. icebox • Curtains, curtain rods • Decorative wall lamp, two dome lighting fixtures • Four swing-up awning-type screens • Modern dining table covered with durable Armstrong Carlon **OPTIONAL FEATURES** • Combination luggage rack, sun deck (4' x 8'), ladder • Awning tent or Cabana tent (colorful candy-stripe pattern) • Padded seat rest, converts to extra bed 60 inches long • Carlon chemical toilet • Adjustable flame LP-gas stove • Sling bed • Awning-type windows for rear doors



Interior view—Econoline Sportswagon

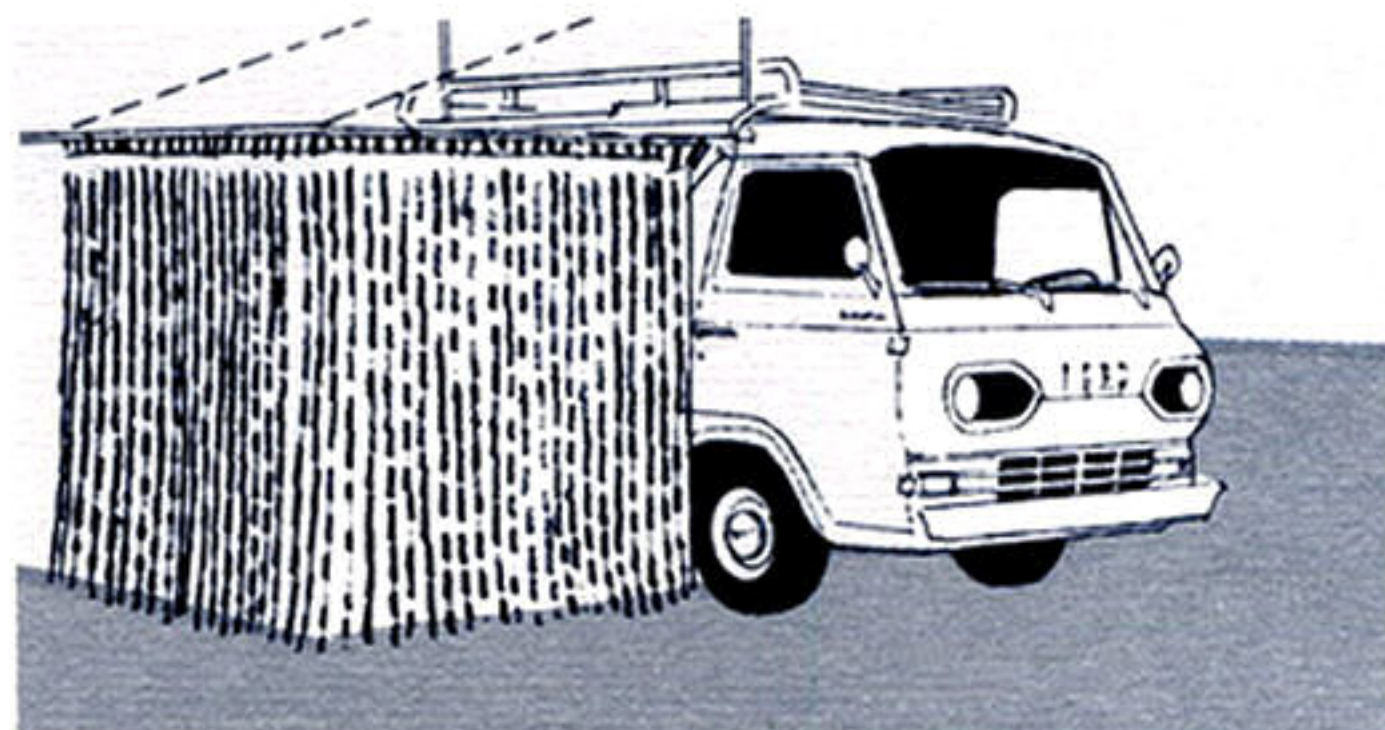


Side view showing stove on door shelf, hideaway table, icebox at right

Econoline Sportswagon with Cabana tent



FORD ECONOLINE VAN with SPORTSWAGON UNIT



1963 FORD TRUCK

RECREATION FLEET

TIPS THAT ADD MORE FUN TO YOUR CAMP OUTINGS

- Sweat suits make cozy pajamas for sleeping outdoors during chilly evenings.
- Aluminum foil cooking saves pots and pans. Carry rolls of both heavy and light wrap. Use heavy work gloves, or tongs, to handle hot foil packages.
- Take part in nature study caravans, free at most national parks. Ask ranger as you enter for schedule of these exciting, instructive drives-hikes-lectures.
- Shoe bags conveniently hold spare clothesline, clothes pins, can opener, long-handled knives, forks, pancake turner, dish mop, etc. String bag on cord and hang from nearby tree.
- Pack two large plastic tablecloths—one under dinnerware, one over table when family's away . . . protects dishes and food from dust.
- Before cooking in pots over open flames, coat bottom and lower edges of pot with thick paste made of detergent and water. Merely rinse pot later to remove carbon and soot. Saves hours of scouring, elbow grease.
- Mosquito netting isn't enough. Pack an insecticide bomb or two. Spray camping area before you lay out your gear (but keep spray off food and tablecloth).
- Besides stove, pack a handy charcoal cooker that folds and carries like a suitcase (charcoal cooks certain meats best). Use electric starter to start fire fast, and use briquettes. They burn longer, more evenly than plain charcoal. After cooking, dump briquettes in water, dry and re-use for next meal to save on fuel.
- Along with standard nesting camp kits, include plastic cups. Many lips are burned on aluminum cups containing barely hot coffee. Use plastic spoons for tasting hot foods.

IMPORTANT NOTE

Camper-type models illustrated in this booklet are only representative of many that are available through individual manufacturers and through your local Ford Dealer. Mention of these models, other than Ford components, does not constitute an endorsement or guarantee by the Ford Motor Company.

PRODUCTS OF  MOTOR COMPANY

