

Ford

EDGE



Go Further

VISIONARY. INGENIOUS. REMARKABLE.
EVERY CAR BEARS HIS SIGNATURE.

Henry Ford



Edge ST-Line
with optional extras available at additional cost



Edge Vignale
with optional extras available at additional cost



Edge Titanium
with optional extras available at additional cost



Scan the QR codes to access additional content.
View Ford's remarkable history in action.

CONTENTS

Introduction	04	Features and technologies.....	24
Edge Vignale.....	10	Body colours.....	26
Interior design	12	Interior trims.....	28
Audio and connectivity	14	Wheels	31
Remarkable technologies	16	Personalise	32
Models overview	18	Engines.....	34
Titanium	20	Dimensions.....	36
ST-Line	21	Specifications.....	38
Vignale	22	Own	46
		Next steps	48
		Warranty	49



360°



Ford Edge ST-Line with optional extras available at additional cost

Explore every opportunity.

The new Ford Edge is one of our most versatile SUVs, both on the road and off. With an impressive combination of premium design, generous space, new technologies you'll not want to be without and innovative connectivity solutions, everyday journeys will never feel quite the same again.



Ford Edge ST-Line with optional extras available at additional cost

Ford Edge ST-Line with optional extras available at additional cost



Ford Edge ST-Line with optional extras available at additional cost



Edge Vignale. ***Refinement redefined.***

Experience a new expression of Ford with Edge Vignale. Representing the very best of Ford with luxurious design, superior craftsmanship and meticulous attention to detail. Unique, signature design elements and a refined, intelligently designed cabin take Edge Vignale to a new level.



Ford Edge Vignale with optional extras available at additional cost



Room to be yourself.

Whatever the size of your dream, the new Ford Edge will accommodate it with ease. Its finely crafted interior offers a luxurious amount of space for up to five occupants and their luggage. Plus, a wealth of premium features, including power heated and cooled front seats (standard on Titanium, optional on ST-Line and Vignale), a heated steering wheel (standard on ST-Line, optional on Vignale, n/a for Titanium) and a panorama roof (optional across the range, replaces standard roof bars). So, wherever you're heading, be sure to get there in comfort and style.



*Ford Edge ST-Line with optional extras available at additional cost
See page 36 for more details on dimensions*



Meet your phone's new best friend.

Ford SYNC 3

Ford SYNC 3 integrates seamlessly with your compatible smartphone, letting you control everything from phone calls and text messaging to music and satellite navigation – all via the 8" touchscreen or through remarkably simple voice commands. Map updates help to keep you on track and on time, and are complimentary for a limited period following vehicle registration.

SYNC 3 features

- Manage your phone, music, apps and navigation with simple voice commands
- Hear your text messages read aloud for you
- Emergency Assistance[†] helps occupants place an emergency call to provide emergency services with the vehicle location in their respective language
- Control SYNC-compatible apps with AppLink, while Apple CarPlay and Android Auto let you navigate your compatible smartphone through the SYNC 3 home screen, as if it were your handset

- Colour touchscreen supports multi-touch 'swipe' and 'pinch-to-zoom' gestures, and lets you arrange application icons and background displays just as you would on your tablet or smartphone

Access additional features via your smartphone with the **FordPass App**.

- Select points of interest along your route. FordPass will send these locations to your SYNC 3 Navigation when you connect through AppLink
- Search for refuelling points by brand or fuel grade
- Search available parking spaces, check costs, opening hours and ratings

Please note: Full SYNC 3 smartphone integration only available with iPhone 5/Android 5.0 (Lollipop) or higher. Some SYNC 3 functions require a data connection, so mobile data charges will apply. To check whether Apple CarPlay and Android Auto are available in your market, please check official Apple CarPlay and Android Auto websites for the latest information.

[†]Ford Emergency Assistance is an innovative SYNC feature that uses a Bluetooth[®]-paired and connected mobile phone to help vehicle occupants initiate a call to the local Communications Centre, following a vehicle crash event involving an airbag deployment or fuel pump shut off. The feature operates in more than 40 European countries and regions.

Effortless connectivity with FordPass Connect.

For the first time ever on your Ford Edge, you and your Ford can stay seamlessly connected wherever you are. That's because the FordPass Connect modem (standard on ST-Line and Vignale, n/a on Titanium) and the FordPass App, together, unlock a range of features designed to make every journey easier.



FordPass Connect

FordPass Connect* can help save you both time and hassle, as well as give you peace of mind.

- Live Traffic** delivers up-to-date traffic information directly to your SYNC 3 Navigation system. The technology then adjusts your recommended route based on the traffic conditions, helping you to arrive more relaxed and on time
- On-board Wi-Fi*** – receive up to 4G Wi-Fi for a maximum of ten devices so you and your passengers can enjoy the same connectivity on the move as you would at home



FordPass App

FordPass Connect becomes even more powerful when paired with a compatible smartphone via the FordPass App, allowing you to access a host of features.

- Use your phone to double-check your car is locked, or allow someone to access your car when you're elsewhere
- Remotely start the engine to defrost your windscreen
- Monitor your fuel level, mileage and tyre pressures, all via your phone
- Find your way back to your parked car on a map
- Receive Vehicle Health Alerts directly to your smartphone

*FordPass Connect is not available on Titanium and is standard on ST-Line & Vignale. **Live Traffic access is free for the first 2 years following the registration of a new Ford featuring SYNC 3 with navigation; thereafter a licence fee is payable.

***To take advantage of the built-in Wi-Fi hotspot capability, a 2018 Ford vehicle must come with the appropriate hardware, and a wireless service plan is required. The on-board modem will be connected at the time of vehicle delivery. Data coverage and service is not available everywhere and terms of your wireless plan, including applicable message and data rates, may apply. You may choose to opt in/opt out of certain data sharing. Please see <https://www.ford.co.uk/useful-information/connected-car-privacy-policy> for more details. The technology will be made available in selected markets in 2018, with the remaining markets following through 2019





Intelligent All-Wheel Drive

New Ford Edge is available with Intelligent All-Wheel Drive that provides a more dynamic driving experience with greater traction on a variety of surfaces. When not required, the system is designed to automatically disconnect the rear driveline and prevent the parts from rotating. (Standard on ST-Line and Vignale)



8-speed automatic transmission

The refined new 8-speed automatic transmission (standard across the range) is controlled via a rotary gear shift dial that is designed to let you select gears easily at the twist of a knob, while freeing up cabin room and storage space.



Dynamic LED headlights and glare-free high beam

Dynamic LED headlight are designed to use camera technology and an LED matrix system to alter the light beam pattern for enhanced illumination.

When the camera detects oncoming or preceding traffic, individual LEDs can deactivate to blank out the area around the vehicles. The rest of the road and its surroundings remain brightly illuminated. (Standard on Vignale, available as part of the optional ST-Line Drivers Assistance Pack on ST-Line)

B&O Sound System

Superior sound and stylish design makes our new B&O sound system the ideal fit for your new Edge. Whatever your taste in music it deserves to sound the way the artists intended. Ford's exciting new 1,000 watt, 12-speaker audio system from B&O delivers exactly that. Exclusively designed and fine-tuned for the new Edge. (Standard on ST-Line and Vignale, optional on Titanium)



Pre-Collision Assist

If Pre-Collision Assist detects a slow-moving or stationary object ahead, it first displays a warning and then sounds a chime. If you don't steer or brake, the system is designed to apply the brakes to help reduce the impact of frontal collisions. (Standard across the range)

In addition, Adaptive Cruise Control with Stop & Go (stand-alone option or as part of the Drivers Assistance Pack on ST-Line and Vignale, n/a for Titanium) is designed to maintain a comfortable distance from the vehicle ahead, and can bring your car to a complete stop and move off again as the traffic allows.



Ford Active Front Steering

This new generation of steering technology makes the Edge easy to manoeuvre at low speeds and in tight spaces. At higher speeds, it makes the vehicle more agile, precise and fun to drive. (Option on ST-Line only)



Choose the right Edge for you.

Available in a range of uniquely individual series, whatever your preference there is a new Ford Edge that's right for you.



Titanium

Vignale

Luxury

New Edge's luxury models deliver superior levels of sophistication and comfort, with premium materials, additional technologies and unique styling elements.



ST-Line

Sport

Distinctive ST-Line exterior styling delivers the dynamic new Ford Edge driving experience with additional eye-catching individuality.

FORD **EDGE** Models

Titanium

Key exterior features

- 19" Luster Nickel alloy wheels
- LED headlights with signature LED Day Time Running Lamps
- LED front fog lights and LED rear lights
- Rear spoiler
- Power fold mirrors with heat, signal & puddle lamps
- Chrome roof rails
- Rear privacy glass
- Quickclear heated front windscreen
- Acoustic side glass
- 18" Mini spare wheel

Key interior features

- 10-way power driver's seat with memory and 4-way manual passenger's seat, in perforated leather
- Heated & cooled front seats and heated rear seats
- Dual-zone Electronic Automatic Temperature Control (DEATC)
- Ford DAB Audio with Navigation System, SYNC 3 with 8" colour touchscreen
- Keyless entry with power start button and handsfree tailgate
- Automatic headlights with auto high/low beam
- Automatic wipers with variable sensitivity adjustment
- Front and rear parking sensors
- Rear View Camera
- Adaptive Cruise Control with Collision Mitigation
- Lane Keeping Aid and Traffic Sign Recognition
- Pre Collision Assist
- Thatcham Category 1 Alarm

Engines

Diesel

2.0L Ford EcoBlue 150 PS (110 kW) 8-speed automatic FWD



FORD **EDGE** Models

ST-Line

Key exterior features different to Titanium

- 20" ST-Line alloy wheels
- Intelligent All Wheel Drive
- Unique front, rear and side sports bodystyling with dark exterior detailing
- Black roof rails
- Dual fascia pass through exhaust with chrome exhaust tip
- Sport-tuned suspension
- Power fold door mirrors with memory

Key interior features different to Titanium

- 10-way power driver's seat with memory and 10-way power passenger's seat, in partial leather seats with perforated Dinamica inserts
- Variable heated front seats
- Heated steering wheel
- Dark headliner
- ST-Line scuff plates
- Alloy pedals
- Cruise Control with Collision Mitigation
- Auto Stop/Start
- B&O premium audio system with 360° sound system with 1,000 Watts of amplifier power, 12 high performance speakers and Digital Sound Processor
- FordPass Connect (embedded modem), including 2 years free live traffic, 3 months or 3GB Wi-Fi Hotspot, remote features and vehicle information, eCall (requires activation)

Engines

Diesel

2.0L Ford EcoBlue 238 PS (177 kW) 8-speed automatic AWD



FORD **EDGE** Models

Vignale

Key exterior features different to ST-Line

- Exclusive 20" Polished alloy wheels
- Standard Suspension
- Matrix Adaptive LED headlamps with Glare Free
- Unique exterior chrome detailing
- Chrome roof rails
- Unique Metallic paint

Key interior features different to ST-Line

- Luxury perforated leather seats
- Leather wrapped instrument panel
- Premium leather-trimmed steering wheel
- Illuminated Vignale door scuff plates
- Non-heated steering wheel
- Non-heated rear seats

Engines

Diesel

2.0L Ford EcoBlue 238 PS (177 kW) 8-speed automatic AWD



Unique leather-trimmed instrument panel.



Dynamic LED headlights with glare-free high beam (includes automatic headlight levelling).





Front wide-view camera

Provides an extended view from the front of your car to the left- and right-hand sides. Particularly useful at junctions and when driving forwards out of parking spaces where your lateral view is impaired. (Option in conjunction with B&O audio system for Titanium and as part of the Drivers Assistance Pack for ST-Line & Vignale)



Auto high beam

Designed to temporarily dip your headlights when it detects oncoming traffic or a vehicle ahead, potentially stopping you from dazzling other drivers. It then automatically reverts back to high beam, giving you enhanced visibility. (Standard on Titanium and ST-Line, Vignale has Matrix Adaptive LED headlights as standard)



Blind Spot Information System

Blind Spot Information System can alert you via discreet warning lights built into both door mirrors, when another vehicle – car, van or lorry – enters your blind spot while driving. (Stand-alone option and as part of the Drivers Assistance Pack for ST-Line & Vignale, n/a for Titanium)



Active Park Assist

Helps you park into parallel or perpendicular parking spaces. Once activated, is designed to automatically steer you in while you operate the pedals. And it can also steer you out of a parallel parking space. (Stand-alone option and as part of the Drivers Assistance Pack for ST-Line & Vignale, n/a for Titanium)



Lane-Keeping System with Driver Alert

Designed to detect if you're unintentionally drifting out of lane. Lane-Keeping Alert then warns you by vibrating the steering wheel and displaying a visual warning. If you fail to respond, Lane-Keeping Aid can provide steering torque assistance to help guide you back into the right lane. Driver Alert monitors your driving behaviour and can warn you if it believes you should take a break. (Standard across the range)



Adaptive Cruise Control

With Adaptive Cruise Control technology, you choose the speed you want to drive at and the system can maintain it. If the built-in RADAR sensor detects a vehicle ahead, it is designed to slow your vehicle to maintain a pre-set distance. Once the road in front is clear, the system accelerates to your chosen speed. (Standard on Titanium, optional on ST-Line and Vignale which also receive Stop & Go and Lane-Centring)



Hands-free tailgate

Opening or closing new Edge's tailgate is easy, even when your hands are full. With the keys in your pocket or bag, simply use a gentle kicking motion under the centre of the rear bumper and the hands-free tailgate will operate without you having to touch a thing. (Standard across the range)



Active Noise Control

Sophisticated suspension and acoustic glass already help to dampen exterior sounds. Active Noise Control diminishes unwanted noise even further from within the cabin. Three concealed microphones detect background noise, which is then cancelled out by offset sound waves played through the in-car speakers. (Standard across the range)



FORD **EDGE** Body colours



Oxford White

Standard body colour for Titanium and ST-Line



Chrome Blue

*Premium body colour, no cost option for Vignale**



Ruby Red

*Exclusive body colour, across the range**



Ingot Silver

*Premium body colour, no cost option for Vignale**



Shadow Black

*Premium body colour, no cost option for Vignale**



White Platinum

*Exclusive body colour, across the range**



Magnetic

*Exclusive body colour across the range**



Burgundy Velvet

*Exclusive body colour, n/a for ST-Line or Vignale**



Ametista Scura^o

*Exclusive body colour, only for Vignale**

**We chose Ruby Red.
What will you choose?**

The new Ford Edge owes its beautiful and durable exterior to a special multi-stage painting process. From the wax-injected steel body sections to the protective top coat, new materials and application processes ensure your Edge will retain its good looks for many years to come.

*At extra cost unless stated as a no cost option.
^oBody colour unique to Vignale.
The Ford Edge is covered by the Ford Perforation Warranty for 12 years from the date of first registration. Subject to terms and conditions.
The car images used are to illustrate body colours only and may not reflect current specification or product availability in certain markets. Colours and trims reproduced within this brochure may vary from the actual colours, due to the limitations of the printing processes used.



FORD **EDGE** Interior trims

*Sit back and relax
in comfort.*

Interior trims

Sophistication and craftsmanship come together beautifully in new Ford Edge. The look and feel of premium materials will enhance your appreciation of the generously proportioned interior, whether you're travelling as a passenger or seated behind the wheel.



Ebony Perforated Leather
(Standard on Titanium)



Partial Ebony Leather with Dinamica Inserts
(Standard on ST-Line)



Luxury Ebony Perforated Leather
(No cost option on Vignale)



Luxury Cashmere Perforated Leather
(No cost option on Vignale)



Colour and trim

	Standard body colour	Premium body colours			Exclusive body colours				
	Oxford White	Chrome Blue	Ingot Silver	Shadow Black	Burgundy Velvet	Ruby Red	White Platinum	Magnetic	Ametista Scura
Titanium									
Seat insert facing trim and colour: Salerno Perforated leather in Ebony*	<input checked="" type="checkbox"/>	<input type="checkbox"/>	<input type="checkbox"/>	<input type="checkbox"/>	<input type="checkbox"/>	<input type="checkbox"/>	<input type="checkbox"/>	<input type="checkbox"/>	
Seat bolster trim and colour: Salerno leather in Ebony*		<input type="checkbox"/>	<input type="checkbox"/>	<input type="checkbox"/>	<input type="checkbox"/>	<input type="checkbox"/>	<input type="checkbox"/>	<input type="checkbox"/>	
Instrument panel colour: Ebony									
ST-Line									
Seat insert facing trim and colour: Dinamica in Ebony	<input checked="" type="checkbox"/>	<input type="checkbox"/>	<input type="checkbox"/>	<input type="checkbox"/>		<input type="checkbox"/>	<input type="checkbox"/>	<input type="checkbox"/>	
Seat bolster trim and colour: Dinamica in Ebony		<input type="checkbox"/>	<input type="checkbox"/>	<input type="checkbox"/>		<input type="checkbox"/>	<input type="checkbox"/>	<input type="checkbox"/>	
Instrument panel colour: Ebony									
Vignale									
Seat insert facing trim and colour: Premium leather in Cashmere		<input checked="" type="checkbox"/>	<input checked="" type="checkbox"/>	<input checked="" type="checkbox"/>	<input type="checkbox"/>	<input type="checkbox"/>	<input type="checkbox"/>	<input checked="" type="checkbox"/>	<input type="checkbox"/>
Seat bolster trim and colour: Premium leather in Cashmere		<input checked="" type="checkbox"/>	<input checked="" type="checkbox"/>	<input checked="" type="checkbox"/>	<input type="checkbox"/>	<input type="checkbox"/>	<input type="checkbox"/>	<input checked="" type="checkbox"/>	<input type="checkbox"/>
Instrument panel colour: Ebony									
Seat insert facing trim and colour: Premium leather in Charcoal		<input checked="" type="checkbox"/>	<input checked="" type="checkbox"/>	<input checked="" type="checkbox"/>	<input type="checkbox"/>	<input type="checkbox"/>	<input type="checkbox"/>	<input checked="" type="checkbox"/>	<input type="checkbox"/>
Seat bolster trim and colour: Premium leather in Charcoal		<input checked="" type="checkbox"/>	<input checked="" type="checkbox"/>	<input checked="" type="checkbox"/>	<input type="checkbox"/>	<input type="checkbox"/>	<input type="checkbox"/>	<input checked="" type="checkbox"/>	<input type="checkbox"/>
Instrument panel colour: Ebony									

Standard ☒
Option at extra cost ☐

FORD **EDGE** Wheels



19"
Luster Nickel alloy wheel
Standard on Titanium
(Fitted with 235/55 tyres)



20"
ST-Line alloy wheel
Standard on ST-Line
(Fitted with 255/45 tyres)



20"
Polished alloy wheel
Standard on Vignale
(Fitted with 255/45 tyres)



20"
Bright machined aluminium alloy wheel
Option on Titanium
(Fitted with 255/45 tyres)



FORD **EDGE** Personalise



Rubber floor mats

The tray-style rubberized all-weather floor mats with Edge nameplate are tailor-made to fit and help protect against dirt and damp. The front floor mats are fixed directly onto the vehicle's floor to help prevent it from slipping. (Accessory only)



Detachable tow bar

For extra transport and stowage capability, the tow bar can tow up to 2,200 kg depending on engine. The tow bar can be detached if not in use. (Optional on ST-Line and Vignale and as an accessory)



Load compartment protection

A durable boot liner is available (accessory only), as well as a reversible load compartment mat (optional on Titanium and ST-Line and as an accessory) that can be extended over the rear seats, together with fold-out bumper protection and carpet with Edge logo on one side, and a durable rubber surface on the reverse side. Both are ideal for transporting wet or dirty items.

Cross bars

Sturdy and lockable cross bars (only to be used with roof rails) allow you to transport a range of loads easily. (Accessory only)

Thule® roof bike carrier

High-quality, easy-to-install roof bike carrier from Thule®. (Accessory only)

Uebler® rear bike carrier

High-quality tow bar-mounted bike carrier with optional practical tilting mechanism (depending on bike carrier model), for easy access to the load compartment. Can carry up to three bikes. (Accessory only)

Load floor net

Elasticated net attaches to tie-down hooks in the load compartment. Helps to secure smaller items and belongings. (Option across the range and as an accessory)

Load retention guard

Robust retention system keeps items of luggage in the load compartment (removable when not in use). One version fits behind the first row seats; the other version fits behind the second row seats. Installation provisions are standard. (Accessory only) Meets European ISO 27955 safety requirements.

ClimAir® wind deflectors

Allow fresh air to enter the vehicle while driving with the front and rear windows open, even during light rain or snow. (Accessory only)

ClimAir® bumper protection

The rear bumper protection plate helps protect against wear and tear when loading. (Accessory only)

Mud flaps

Contoured mud flaps help to keep your new Ford Edge clean by protecting it from road spray and stone chips. Available as sets for front and rear. (Accessory only, not available on ST-Line or Vignale)



For more accessories please visit the Online Accessory Catalogue at www.ford-accessories.co.uk
For a range of Ford branded items – from clothing to lifestyle products and model cars – visit www.fordlifestylecollection.com

Please note: Fitment of accessories may have an impact on your vehicle's fuel consumption.
*Item covered by third party supplier's warranty, please see back cover for details.

Efficiency and performance.

New Ford Edge is powered by a choice of advanced new 2.0-litre Ford EcoBlue diesel engines. From power and driving pleasure to fuel efficiency and refinement, there's an engine to suit your needs.

Powerful

2.0L Ford EcoBlue 238 PS
CO₂ emissions from 176 g/km
(NEDC equivalent)**



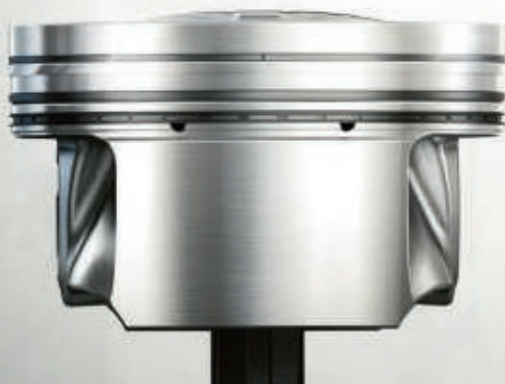
Advanced engine technology

Ford EcoBlue diesels build on the industry-leading performance and technology of our multi award-winning Ford EcoBoost petrol engines.

Both diesels are equipped with Auto Start-Stop technology and meet the latest Euro Stage 6.2 emissions standard. They also use AdBlue®, a urea/water-based fluid that converts NO_x emissions in the exhaust gas into nitrogen and water. A diesel particulate filter then removes almost all solid particulates from the exhaust by oxidising them within the filter.

Efficient

2.0L Ford EcoBlue 150 PS
CO₂ emissions from 153 g/km
(NEDC equivalent)**



Engines

Fuel, performance and emissions

The test used to establish fuel consumption and CO₂ figures has changed to deliver results that are more representative of real life driving. The Worldwide Harmonised Light Vehicle Test Procedure (WLTP) has replaced the old NEDC test. The Fuel Consumption figures shown are derived from the new WLTP test. However, until 6th April 2020, the CO₂ figure shown will be the NEDC equivalent and this will be used to calculate Vehicle Excise Duty.

The table on this page shows the fuel consumption (WLTP) and CO₂ emissions (NEDC equivalent) figures for each available engine. These figures may not reflect real life driving results, which will depend upon a number of factors including the accessories fitted, variations in weather, driving styles and vehicle load.


The figures shown are for comparability purposes; only compare fuel consumption and CO₂ figures with other vehicles tested to the same technical procedures..


*In 4th gear. *Ford test figures. **The declared Fuel/Energy Consumptions, CO₂-Emissions and Electric range are determined according to the technical requirements and specifications of the European Regulations (EC) 715/2007 and (EU) 2017/1151 as last amended. Light Duty Vehicles type-approved using the World Harmonised Light Vehicle Test Procedure (WLTP) have Fuel/Energy Consumptions and CO₂-Emission information for both New European Drive Cycle (NEDC) and WLTP. WLTP is a new, more realistic test procedure for measuring fuel consumption and CO₂ emissions and will fully replace the NEDC latest by end of the year 2020. The applied standard test procedure enables comparison between different vehicle types and different manufacturers. In addition to the fuel efficiency of a car, driving behaviour as well as other non-technical factors play a role in determining a car's fuel/energy consumption, CO₂ emissions and electric range. CO₂ is the main greenhouse gas responsible for global warming. A guide on fuel economy and CO₂ emissions which contain data for all new passenger car models is available at any point of sale free of charge or can be downloaded under <http://carfueldata.dft.gov.uk>. DPF = diesel particulate filter. All engines include Auto Start-Stop. **Figures with 19" wheels for Titanium and 20" wheels for ST-Line and Vignale. *Represents the lightest kerbweight assuming driver at 75 kg, full fluid levels and 90% fuel levels, subject to manufacturing tolerances and options, etc., fitted. **Towing limits** quoted represent the maximum towing ability of the vehicle at its **gross vehicle mass** to restart on a 12 per cent gradient at sea level. The performance and economy of all models will be reduced when used for towing. **Nose weight limit** is a maximum of 40 kg on all models. **Gross train mass** includes trailer weight. ***Gradient at sea level.

	2.0L Ford EcoBlue	2.0L Ford EcoBlue (with Auto Start-Stop system)
5-door		
Emission Standard	Euro Stage 6.2 + DPF	Euro Stage 6.2 + DPF
Maximum Power PS (kW)	150 (110)	238 (177)
Torque Nm	370	500
CO ₂ emissions (g/km) NEDC equivalent**	153	176
Fuel type	Diesel	Diesel
Transmission	8-speed automatic	8-speed automatic
Drive	2x4	4x4
Combined Fuel consumption in mpg (L/100 km)** (WLTP Figures with options)		
Lowest Performing	38.2 (7.4)	34.4 (8.2)
Highest Performing	42.4 (6.7)	41.5 (6.8)
Performance*		
Max. speed (mph)	129	134
0-62 mph (secs)	11.2	9.6
31-62 mph* (secs)	n/a	n/a
Weights and loads		
Kerbweight (kg)*	2011	2133
Gross vehicle mass (kg)	2610	2715
Gross train mass (kg)	4610	4715
Max. towable mass (braked) (12%***) (kg)	2000	2000
Max. towable mass (unbraked) (kg)	750	750

Dimensions

5-door

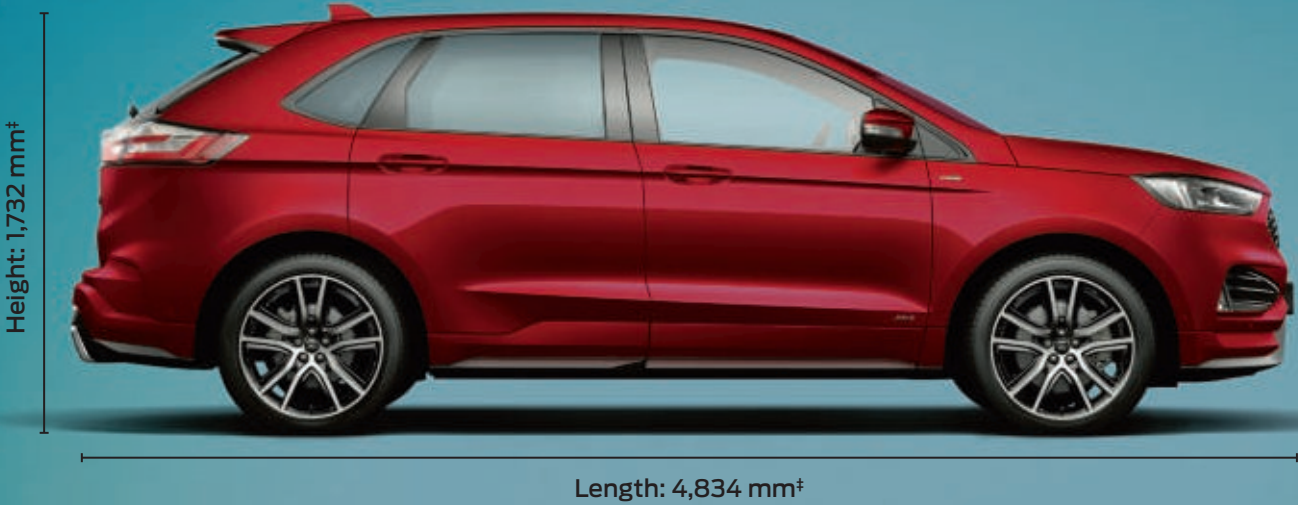
**602L**
Rear seats folded

800L
All seats upright

Overall length (mm)	4834
Overall width with mirrors (mm)	2184
Overall width without mirrors (mm)	1928
Overall width with folded mirrors (mm)	1981
Overall height (max.) (without roof rails) (mm)	1732
Minimum distance between wheel arches (in luggage load compartment) (mm)	1150
Turning circle – Kerb to kerb (m)	11.99
Luggage capacity (litres)*	
5-seat mode (laden to package tray with mini steel spare) with 5-seats	602L
5-seat mode (laden to roof)	800L
2-seat mode (laden to roof) (with mini steel spare)	1688L
Fuel tank capacity (litres)	
Diesel	66

*Measured in accordance with ISO 3832. Dimensions may vary dependent on the model and equipment fitted.

FORD EDGE Dimensions



Styling and Appearance

	Titanium	ST-Line	Vignale
Wheels			
19" Luster Nickel Alloy wheel (fitted with 235/55 tyres)*	<div></div>	-	-
20" ST-Line Alloy wheel (fitted with 255/45 tyres)*	-	<div></div>	-
20" Polished Alloy wheel (fitted with 255/45 tyres)*	-	-	<div></div>
20" Bright Machined Alloy wheel (fitted with 255/45 tyres)*	<div></div>	-	-
18" mini spare wheel	<div></div>	<div></div>	<div></div>
Locking wheel nuts	<div></div>	<div></div>	<div></div>
Design features			
Black laminate finish on upper door line	-	<div></div>	-
Bright-finish on upper door line	<div></div>	-	<div></div>
Bodyside cladding – Self colour, lower door, wing and bodyside	<div></div>	-	-
Bodyside cladding – Painted body colour, lower door, wing and bodyside	-	<div></div>	-
Bodyside cladding – Body colour, lower door, wing and bodyside, with chrome strip	-	-	<div></div>
Front bumper – Painted body colour upper and self colour lower	<div></div>	-	-
Front bumper – Painted body colour upper and lower	-	<div></div>	-
Front bumper – Painted body colour upper and lower, with lower chrome front skid plate and bright chrome spears	-	-	<div></div>
Rear bumper – Painted body colour upper and self colour lower	<div></div>	-	-

Styling and Appearance

	Titanium	ST-Line	Vignale
Rear bumper – Painted body colour upper and lower	-	<div></div>	<div></div>
Door handles – Body colour	<div></div>	<div></div>	<div></div>
Dual rear exhaust	<div></div>	<div></div>	<div></div>
Rear spoiler – Body colour	<div></div>	<div></div>	<div></div>
Rear privacy glass	<div></div>	<div></div>	<div></div>
Roof rails – Black finish (not available if fixed panorama roof is specified)	-	<div></div>	-
Roof rails – Chrome finish (not available if fixed panorama roof is specified)	<div></div>	-	<div></div>
Hands-free tailgate – Keyless Entry (Passive Entry Passive Startup, (PEPS) with Hands Free Liftgate	<div></div>	<div></div>	<div></div>
Pedal set with aluminium covers	-	<div></div>	-
Option Packs			
ST-Line Drivers Assistance Pack – Adaptive Cruise Control with Stop & Go and Lane Centring, BLIS, Active Park Assist, Front Camera & Dynamic Matrix LED Glare Free Headlamps	-	<div></div>	-
Vignale Drivers Assistance Pack – Adaptive Cruise Control, BLIS, Active Park Assist & Front Camera	-	-	<div></div>

Standard

Option at extra cost

Part of an option pack at extra cost

*The wheel you choose will be fitted with the tyre size noted, but no choice of tyre brand is available.

Driving experience

	Titanium	ST-Line	Vignale
Driver assistance			
Active Park Assist (enhanced) (includes parallel and perpendicular parking assistance)	–		
Rear-view camera			
Front wide-view camera (only available on Titanium if B&O audio system with navigation has been ordered)			
Parking distance sensor(s) – Front and rear			
Cruise control – Includes Speed Limiter and Intelligent Speed Assist	–		
Adaptive Cruise Control with Pre-Collision Assist		–	–
Adaptive Cruise Control with Stop & Go, Lane-Centring and Pre-Collision Assist	–		
Electronic power-assisted steering (EPAS)			
Active Front Steering	–		–
Hill Start Assist ²⁾			
Blind Spot Information System with Cross Traffic Alert ²⁾ (includes auto-dimming rear-view mirror, automatic headlights, auto high beam and auto-foldable door mirrors)	–		
Lane-Keeping System ²⁾ (including Lane-Keeping Aid ²⁾ , auto high beam ¹⁾ , Driver Alert ²⁾ and autowipers ³⁾)			
Traffic Sign Recognition ²⁾			
Exterior lighting			
Fog lights – Front with LED Technology			
Matrix LED Adaptive Headlights with Glare Free high beam	–		
BI-LED Headlights			–
LED daytime running lights			
Headlights – Dynamic auto-levelling			
Headlights – Auto-lighting (including autowipers and auto high beam)			
Rear lights with LED technology			
Suspension			
Suspension – Sport tuned	–		–
Suspension – Standard		–	
Instruments and controls			
Paddle shifts			
Shift Indicator light			

Performance and efficiency

	Titanium	ST-Line	Vignale
Technology			
Auto Start-Stop	–		

Comfort and convenience

	Titanium	ST-Line	Vignale
Interior convenience			
Centre console – With fixed armrest and stowage			
Centre console – With fixed leather-trimmed armrest and stowage			
Centre console – With uncovered moulded cup holders			
Centre console – 220 V power outlet converter			
Overhead console – Full-length with sunglasses stowage			
Audio and communication systems			
Active Noise Cancellation			
Ford DAB Audio with Navigation, including 9 speakers, Ford Sync 3 with Bluetooth®, 8" touchscreen, Apple Car-Play®, Android Auto®, Emergency Assistance and 2 USB ports			
B&O DAB Audio with Navigation, including 12 speakers, Ford Sync 3 with Bluetooth®, 8" touchscreen, Apple Car-Play®, Android Auto®, Emergency Assistance and 2 USB ports			
Climate control			
Air conditioning – Dual-zone Electronic Automatic Temperature (DEATC)			
Interior lighting			
LED 2nd row reading lights			
Ambient lighting (front and rear door release handles, front door map pockets (Titanium and ST-Line only), front and rear door map pockets (Vignale only), console cup holders, console main stowage bin (white light only), media hub, console pass through and front footwells)			

Standard

Option at extra cost

Part of an option pack at extra cost

¹⁾Safety feature. ²⁾Driver assistance feature.

Comfort and convenience

	Titanium	ST-Line	Vignale
Seating			
Front seats – Sports-style	■	■	
Front seats – Premium-style			■
Front seats – 4-way manual height adjust passive head restraints	■	■	■
Front seats – 10-way power driver seat (power fore/aft/up/down/recline/tilt/2-way power lumbar)	■		
Front seats – 4-way manual passenger seat (fore/aft/up/down/recline)	■		
Front seats – 10-way power driver seat with mirror and seat memory function (power fore/aft/up/down/recline/tilt/2-way power lumbar)		■	■
Front seats – 10-way power passenger seat (fore/aft/up/down/recline/tilt/2-way power lumbar)		■	■
Front seats – Variable heated driver and passenger seat		■	■
Front seats – Climate-controlled driver and passenger seat (heated and cooled)	■	□	□
Rear seats – Second row seats with fold-flat and recline	■	■	■
Rear seats – Second row manual 'Easy Fold' seat function	■	■	■
Rear seats – Variable heated (only available with perforated leather/suede-trimmed seats)	■	■	–

Comfort and convenience

	Titanium	ST-Line	Vignale
Instruments and controls			
Door mirrors – Power-operated, auto-foldable, heated with body colour housings, side indicators and puddle lights	■		
Door mirrors – Power-operated, heated, auto-foldable, electrochromatic (driver side only) with memory, body colour housings, side indicators and puddle lights (only available in conjunction with leather/partial leather seat trim)		■	■
Panorama roof – Electric sliding (includes electric sunblind) (not available if roof rails are specified)	□	□	□
Headlights – Courtesy delay	■	■	■
Wipers – Automatic, with rain sensor (includes auto-dimming rear-view mirror)	■	■	■
E-Shifter rotary gear shift knob	■	■	■
Steering wheel – Leather-trimmed	■		■
Steering wheel – Leather-trimmed with mini-perf and red stitching		■	
Steering wheel – Heated	–	■	□
Ford KeyFree System with Ford Power starter button and hands-free tailgate (includes power tailgate)	■	■	■
Windows – Electrically-operated front and rear with one-shot lowering and closing	■	■	■
Windows – Global lowering/closing	■	■	■
Steering column – Rake- and reach-adjustable	■	■	■
Technology			
Quickclear heated windscreen, with heated windscreen washer jets	■	■	■
Mirror – Electrochromic	■	■	■
MyKey	■	■	■

- Standard ■
- Option at extra cost □
- Part of an option pack at extra cost ▣

Safety and Security

	Titanium	ST-Line	Vignale
Safety			
Electric parking brake	■	■	■
Anti-lock braking system (ABS) with electronic brake-force distribution (EBD) ¹⁾	■	■	■
Tyre Pressure Monitoring System ¹⁾	■	■	■
Airbags – Driver's and front passenger's* ¹⁾	■	■	■
Airbags – Front side impact ¹⁾	■	■	■
Airbags – Driver's knee bolster ¹⁾	■	■	■
Airbags – Front and rear side curtain ¹⁾	■	■	■
Airbags – Passenger airbag deactivation switch ¹⁾	■	■	■
Security			
Electrically-operated childproof locks on rear doors	■	■	■
Remote, power central/double locking	■	■	■
Thatcham Category 1 alarm with volume sensing, perimeter alarm battery backed (includes remote central/double locking)	■	■	■
Option Packs			
ST-Line Drivers Assistance Pack – includes Adaptive Cruise Control with Stop & Go and Lane Centring, BLIS, Active Park Assist, Front Camera & Dynamic Matrix LED Glare Free Headlamps	–	□	–
Vignale Drivers Assistance Pack – includes Adaptive Cruise Control, BLIS, Active Park Assist & Front Camera	–	–	□

Utility

	Titanium	ST-Line	Vignale
Body			
Floor mats – Deluxe velours carpet, front and rear	■	–	–
Floor mats – Premium velours carpet, front and rear	–	■	–
Floor mats – Luxury carpet, front and rear	–	–	■
Carpet and trim			
Load compartment mat – Reversible	□	□	–
Load compartment mat – Vignale exclusive, with logo	–	–	⊗
Exterior functional			
Tow bar – Removable (detachable)	–	□	□
Loadspace compartment			
Cargo compartment net	■	■	■
Load compartment 4 tie-down rings	■	■	■
Tonneau cover	■	■	■

Insurance groups

	Titanium	ST-Line	Vignale
2.0L Ford EcoBlue 238 PS (177 kW), 8-speed auto, 4x4	–	34E	37E
2.0L Ford EcoBlue 150 PS (110 kW), 8-speed auto, 2x4	26E	–	–

Standard ■

Option at extra cost □

Part of an option pack at extra cost ⊗

¹⁾Safety feature.

Note: A rear-facing child seat should never be placed in the front passenger seat when the Ford vehicle is equipped with an operational front passenger's airbag. The safest place for children is properly restrained on the rear seat.

E = Exceeds security requirement for model concerned and group rating has been reduced. Insurance ratings are issued by the Association of British Insurers.

Making ownership easy and affordable.

Take advantage of a range of invaluable services and make the most of your car.

FORD SERVICE

Allows you to relax knowing we're always by your side.

With Ford, the service doesn't end when you leave the showroom. Ford Service is designed to keep your Ford in great condition and help you make the most of your car – throughout its life.

- Comprehensive service and maintenance plans
- Use of quality Ford parts for added peace of mind
- Ford trained technicians using the latest diagnostic equipment and tools
- Ford Online Service Booking
- One Call for everything Ford 0203 564 4444
- Ford Accident Management, service free to all drivers

Also, every Ford vehicle comes with 12 months UK & European Roadside Assistance from the date of registration. This can be extended for a further 12 months when your vehicle has a Scheduled service at a participating Ford Dealer.

FORD INSURE

At Ford Insure we provide insurance designed specifically for Ford owners. We have comprehensive cover which includes features and benefits that really matter to you, along with first class service.

- Repairs carried out by Ford-trained technicians at Ford Accident Repair Centres
- Genuine Ford parts with a 5 year guarantee
- Small replacement car for the duration of your repairs
- Ford Insure experts at UK call centres
- 24 hour accident recovery
- Unlimited cover for standard fit in-car entertainment equipment
- Up to 90 days European cover
- Replacement child seats in the event of an accident

FORD PROTECT

Extend your warranty up to 5 years/100,000 miles with Ford Protect.

Extend your standard 3-year/60,000 miles warranty and enjoy worry-free motoring for many years to come. Ford Protect provides a range of key benefits including:

- High flexibility in duration and mileage
- Cover against unexpected electrical and mechanical repair costs in the UK and Europe
- With Ford Protect, the price of parts and labour are guaranteed for the length of your plan
- Help prolong the lifespan of your Ford vehicle
- Help protect your vehicle resale value

To help increase potential resale value, Ford Protect New Vehicle Warranties are transferable to the new owner should you decide to sell your vehicle.

Ford Protect terms and conditions apply see ford.co.uk/extended-warranties for more information.

FORD Protect Extended Warranty for New Vehicles

	Total Mileage (mls)
4 Year Protection	80,000 mls
5 Year Protection	100,000 mls



Terms and conditions apply.

Ford Insure is sold and administered by Europa Group Limited which is authorised and regulated by the Financial Conduct Authority. Registration number 309794. Registered in England with company number 3279177. Registered office: Europa House, Midland Way, Thornbury, Bristol, BS35 2JX.



FORD EDGE Next steps



try

Visit your Ford Dealer and test drive the new Ford Edge for yourself.
Find your local Dealer: www.ford.com/SBE/DealerLocator



build

Go online and build and price your new Ford Edge to your exact specification at www.fordedge.com/configurator



finance

When it comes to financing your vehicle, our size and expertise means we're well placed to provide you with a wide range of finance products.

Ford Credit provides a range of finance products for your vehicle whether you are a private or business user.

Ford Lease specialises in contract hire and leasing and provides an alternative range of finance plans which can be tailored to suit your business.

For more information about our finance products visit ford.co.uk

Important Information:
*Finance subject to status. Guarantees may be required. Freepost Ford Credit.
Ford Credit is a trading style of FCE Bank plc. Which is authorised by the Prudential Regulation Authority and regulated by the Financial Conduct Authority and the Prudential Regulation Authority under firm reference number 204469.
^ Ford Lease is provided by ALD Automotive Limited acting as Ford Lease BS16 7LB. ALD is registered in England No. 987418. ALD is authorised and regulated by the Financial Conduct Authority.



own

When you drive away in your new vehicle, we're with you all the way. Ford has a large authorised service network to help you keep your vehicle in the best condition.

And should your new Ford ever require accident repair, a Ford Accident Repair Centre is the best place to get your vehicle back to its pre-accident condition and on the road as quickly as possible.



FordPass

FordPass is a new platform that will empower you to rethink the way you move. Finds parking locations nearby, contains vehicle and finance details, dealer information and a host of useful guides.

Live Traffic access is free for the first 2 years following the purchase of a new Ford featuring SYNC 3 with navigation; thereafter there is an annual licence fee.



contact

Ford Credit Account Services : 0345 712 5490
Ford Lease Customer Services : 0344 600 1405

Calls to 0344 and 0345 numbers are charged at the same rate as a standard 01 or 02 geographic number, even when calling from a mobile.



FORD EDGE Warranty

- 3-year/60,000 miles* Ford Protect Classic Plan Warranty
- 1-year/unlimited mileage* Ford Assistance Roadside Cover (Europe)
- 3-year/60,000 miles* Paint Surface Warranty
- 12-year/unlimited mileage* Perforation Warranty

All models



- Standard ☒
- Option at extra cost ☐
- Part of an option pack at extra cost ☒

Illustrations, descriptions and specifications. This catalogue was correct at the time of going to print. However, Ford policy is one of continuous product development. The right is reserved to change specifications, colours and recommended prices of the models and items illustrated and described in this publication at any time. For the latest details always consult your Ford Dealer. **Optional equipment.** Throughout this publication, wherever a feature is described as being an 'Option' or 'Option Fitment/Pack' etc, you should assume that it will be at extra cost to the base vehicle, unless specifically stated to the contrary. All models and colour combinations are subject to availability. **Note.** Some images portrayed are of a pre-production model and/or are computer generated, therefore, the design/features on the final version of the vehicle may differ in various respects. In addition, some of the features shown on the vehicles may be optional. **Note.** This brochure contains both original Ford accessories as well as a range of products from our suppliers. Fitment of accessories may have an impact on your vehicle's fuel consumption. ♦ The identified accessories are carefully selected third party supplier branded accessories which do not come with a Ford warranty but are covered by the third party supplier's own warranty, the details of which can be obtained from your Ford Dealer. **Note.** The Bluetooth® word mark and logos are owned by the Bluetooth SIG, Inc. and any use of such marks by Ford Motor Company is under licence. The iPod word mark and logos are the property of Apple Inc. Other trademarks and trade names are those of their respective owners. **Note.** Some driver assistance features and safety features described in this brochure are designed to function using sensors, whose performance may be affected under certain weather or environmental conditions.

The Government fuel figures do not express or imply any guarantee of the fuel consumption of any particular vehicle. The vehicles themselves have not been tested and there are inevitably differences between individual vehicles of the same model. In addition, a vehicle may incorporate particular modifications. Furthermore, the driver's style and road and traffic conditions, as well as the extent to which the vehicle has been driven and the standard of maintenance, will affect its fuel consumption. **Insurance groups** are only as recommended by the Association of British Insurers. You should always consult your insurance adviser for confirmation.

Ford One Call In the unlikely event that your Ford Dealer can't help you or if you need to speak to us directly, call 0203 564 4444	Ford Motability Call our Ford Motability team on 0345 6040019
Ford Rental – local service nationwide Car and Van rental from our latest model range. Contact your local Ford Dealer for more information	Finance Ford Credit Customer Services 0345 712 5490. Ford Lease Customer Services 0344 600 1405 Calls to 0344 and 0345 numbers are charged at the same rate as a standard 01 or 02 geographic number, even when calling from a mobile.



Ford and BP – working together to reduce fuel consumption and emissions.

Published by Ford Motor Company Limited, Brentwood, Essex, England.
Registered in England No. 235446.
FA 1620/4
BJN 206107, FoE H72E
PN 874510/1218/30m/GBR en
August 2018.
© Ford Motor Company Limited.

MY 2019 GBR en





Go Further

www.ford.co.uk