

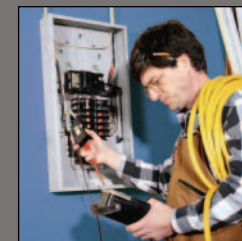
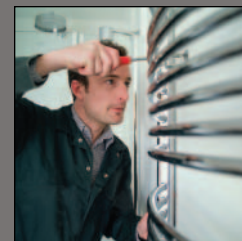


2005 MITSUBISHI FUSO



FE145

Driving your
business **forward.**





2005 MITSUBISHI FUSO



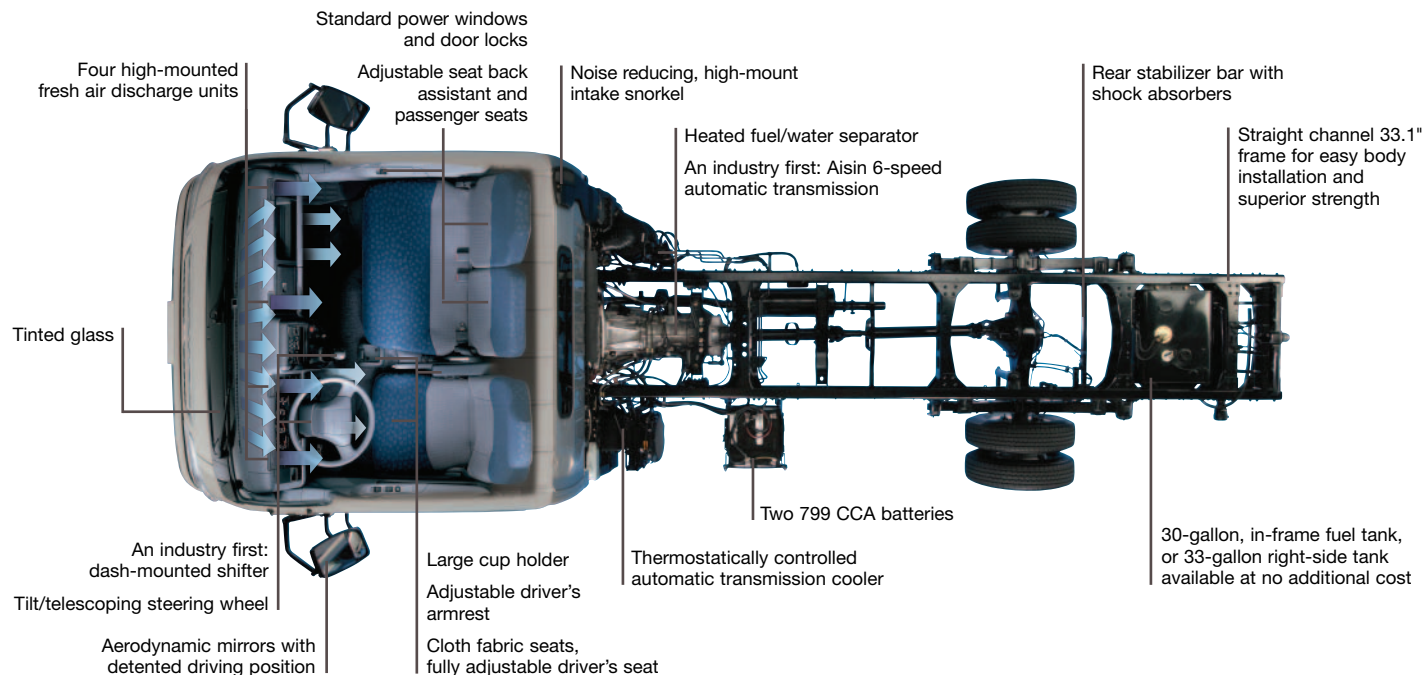
FE145: Sleek styling, solid reliability.

The new FE145 model combines dramatic styling, a newly re-engineered cab, chassis, components and go-where-you-point-it responsiveness with Mitsubishi Fuso's longstanding reputation for dependability. Its turbocharged 4-cylinder diesel is quieter and offers more torque. Its 5-speed manual transmission shifts even smoother. Available Aisin 6-speed automatic transmission offers enhanced drivability, especially on hills. A wider stance provides improved handling. Halogen headlamps offer superior visibility. Inside is a true driver's environment with more head, leg and elbow room, new instrumentation, tilt/telescoping steering wheel, adjustable seating, dash-mounted shifter and much, much more. Feature for feature, dollar for dollar, the new FE145 is the best vehicle in its class. And the right truck for the job.

FE145

- New easier-to-read instrument panel
- Dash-mounted shifter provides more legroom
- Tilt/telescoping steering wheel with one-touch quick release
- Optional split-view driver and passenger mirrors help eliminate blind spots
- 3-speed wet arm windshield wipers





Safety

Crush bar in each door

Energy-absorbing steering wheel

Daytime running lights

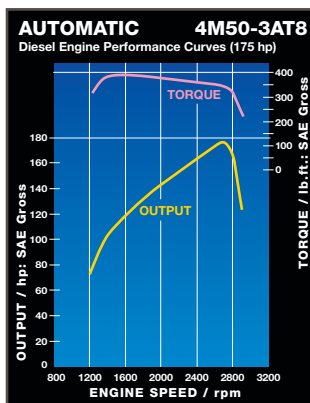
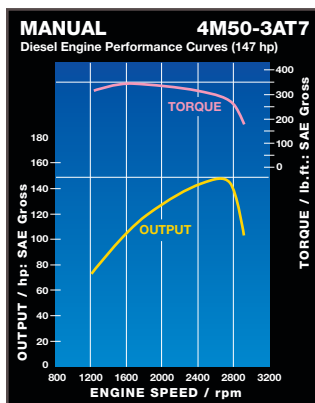
Dual-caliper disc brakes with ABS, all wheels

High-visibility halogen headlamps

Covered, open-grate entry steps

"Wet arm" 3-speed windshield wipers

Forward swing doors for easy, safe entry



Engine

Model	Mitsubishi 4M50
Type	DOHC 4-stroke cycle, water-cooled, turbo-charged, intercooled diesel with 4 valves per cylinder and dual balance shafts
No. of cylinders	Four in-line
Piston displacement	299.0 cu.in. (4.9 liter)
Max. output (SAE, gross)	147 hp MT, 175 hp AT @ 2700 rpm
Max. torque (SAE, gross)	347 lb.-ft. MT, 391 lb.-ft. AT @ 1600 rpm
Air cleaner	Dry paper element with snorkel
Starter	12-volt
Alternator	12-volt, 100-amp
Cold weather starting aid	Individual ceramic-tipped glow-plugs

Body Colors

Natural White



Arcadia Silver



Jupiter Green



Mars Red



Shannon Blue



Fabric Style

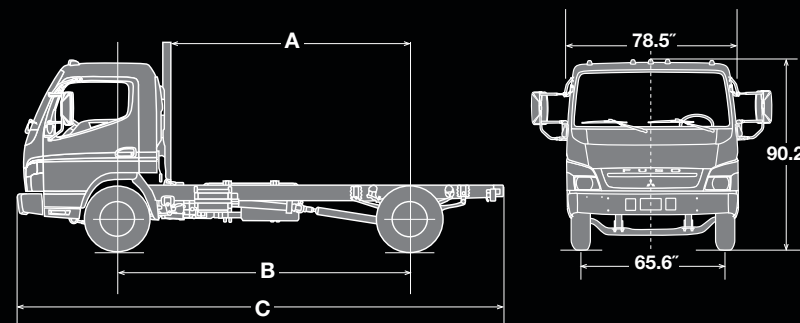
Blue and Gray Cloth



FE145 Specifications

Chassis

Clutch		Organic
Clutch size		12.8"
Transmission		
Standard transmission		Mitsubishi 5-speed OD MT
Optional transmission		Aisin Electronic 6-speed OD AT
Estimated top speed (mph)		71 MT/75 AT
Axles		
Front		Reverse Elliot, I-beam type, 5,510-lb. capacity
Rear		Full floating type, 9,920-lb. capacity
Final reduction gear		Single-reduction hypoid gear
Ratio		4.875 MT/5.285 AT
Curb weight base model		5,732 lb.
Turning diameter (min. wheelbase)		35.1 ft.
Tires (premium)		Single front, dual rear
Size		215/85R16 10PR All-season all positions
Disc wheel		16" x 6"/6-lug
Steering		Ball-nut-type with integral-type hydraulic power booster Tilt/telescoping steering column with steering lock
Windows/door locks		Power
Suspension		
Front		Laminated leaf springs with shock absorbers and stabilizer bar
Rear		Laminated leaf springs with shock absorbers and stabilizer bar
Brakes		
Service		Dual-caliper disc, hydraulic-type w/ vacuum servo assist w/ ABS
Parking		Drum/driveline, internal expanding shoe
Exhaust		Vacuum actuated
Frame		
Type		Ladder/straight
Section modulus		8.11 cu.in.
Yield strength		51,200 psi
RBM per rail		415,232 lb.-in.
Height/width		34.6"/33.1"
Fuel tank		33-gallon side mount, or 30-gallon aft mount
Electrical system		Two 12-volt, maintenance-free batteries – 799 CCA EA
Vehicle safety		Energy-absorbing steering wheel, crush bars in doors, daytime running lights and ABS standard



Dimensions

A. Usable cab to rear axle	87.5"	107.2"	125.3"	137.1"
B. Wheelbase	114.6"	134.3"	152.4"	164.2"
C. Overall length (end of frame)	228.2"	247.9"	266.0"	277.8"
Body size accommodated	12'	14'	16'	18'

Weight (lb.)*

GVWR (lb.)/GAWR (lb.)	14,500	Front 5,360	Rear 9,880
GCWR (lb.) MT/AT	19,503		
Max. body-payload capacity (lb.)	8,768		

*Weight approximate. See dealer for details.



MITSUBISHI FUSO
TRUCK OF AMERICA, Inc.

2015 Center Square Road
Logan Twp., NJ 08085

For the dealer nearest you,
or for more information,
visit our web site at:
www.mitfuso.com

Vehicle specifications are subject to change without notice. Photos and descriptions included on this spec sheet may vary in comparison to actual vehicle models.

♻️ PRINTED IN THE U.S.A. ON
RECYCLED AND RECYCLABLE PAPER 6/04.
©2004 MITSUBISHI FUSO TRUCK OF
AMERICA, Inc.