

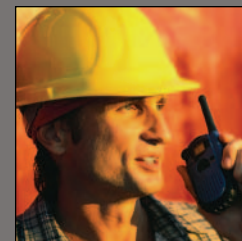


2005 MITSUBISHI FUSO



FK200

Easy-going **personality.**
Heavy-duty
engineering.





2005 MITSUBISHI FUSO

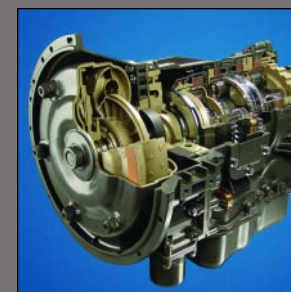


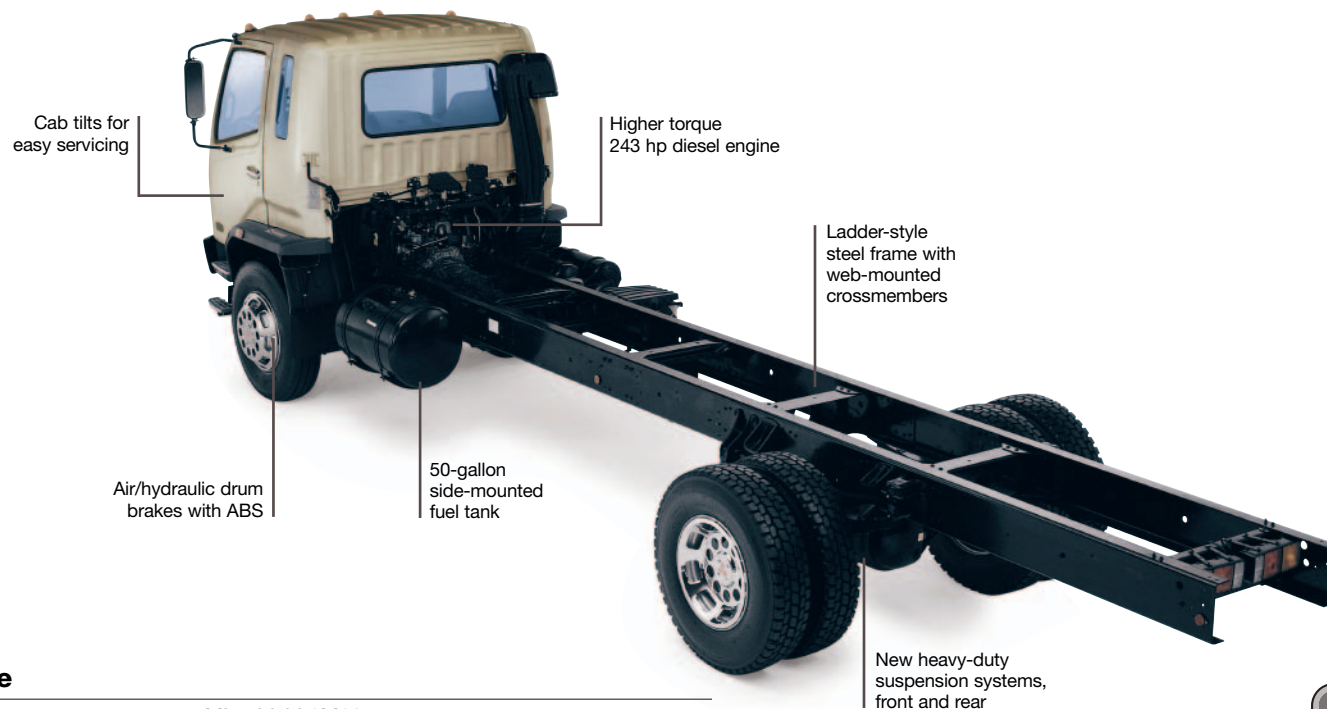
FK200: More power to you.

This easy-to-drive, medium-duty cabover has heavy-duty engineering everywhere. Its turbo-charged 243 hp 6-cylinder diesel now churns out more torque – 514 lb.-ft. of payload-moving muscle. Its ladder-style steel frame is complemented by heavy-duty front and rear suspension systems. And its new low-profile configuration sits just 36" off the ground. Outside, the cab features aggressive new styling. Inside, there's an exceptionally quiet, comfortable work environment – fully trimmed with adjustable seating, power steering, windows and door locks. There's a choice of 6-speed manual or 5-speed Allison® automatic transmissions. And air/hydraulic drum brakes with ABS for more sure-footed stops. If you've got a big job to do, this medium-duty truck delivers maximum productivity.

FK200

- Available Allison 5-speed automatic transmission
- Improved automatic transmission shifter
- Open-grate steps for safe entry/exit
- Low-profile wheel and tire combination
- Contoured, color-coordinated front bumper





Safety

Crush bar in each door

Energy-absorbing steering wheel

Daytime running lights

Air/hydraulic brakes with ABS, all wheels

High-visibility halogen headlamps

Open-grate entry steps

Engine

Model	Mitsubishi 6M60
Type	SOHC 4-stroke cycle, water-cooled, turbocharged, intercooled diesel with 4 valves per cylinder
No. of cylinders	Six in-line
Piston displacement	460 cu.in. (7.5 liter)
Max. output (SAE, gross)	243 hp @ 2600 rpm
Max. torque (SAE, gross)	514 lb.-ft. @ 1400 rpm
Air cleaner	Dry paper element with snorkel
Starter	12-volt
Alternator	12-volt, 100-amp
Cold weather starting aid	Individual ceramic-tipped glow-plugs

Body Colors

Natural White



Arcadia Silver



Jupiter Green



Mars Red



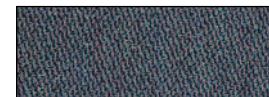
Shannon Blue



Immediately available in white. All other colors may be special ordered at no extra charge.

Fabric Style

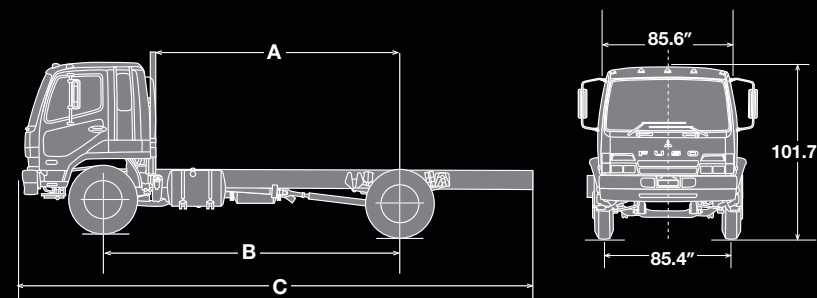
Blue and Gray Cloth



FK200 Specifications

Chassis

Clutch		Cerametallic
Clutch size		15"
Transmission		
Standard transmission		Mitsubishi 6-speed OD MT
Optional transmission		Allison 1000 Electronic 5-speed OD AT
Estimated top speed (mph)		85 MT/79 AT
Axles		
Front		Reverse Elliot, I-beam type, 7,275-lb. capacity
Rear		Full floating type, 16,975-lb. capacity
Final reduction gear		Single-reduction hypoid gear
Ratio		4.111 MT/4.444 AT
Curb weight base model		7,560 lb. (MT only)
Turning diameter (min. wheelbase)		45.2 ft.
Tires (premium)		Single front, dual rear
Size		225/70R19.5 12PR Highway/Traction
Disc wheel		19.5" x 6.75"/6-lug
Steering		Ball-nut-type with integral-type hydraulic power booster Tilt/telescoping steering column with steering lock
Cruise Control		Standard
Windows/door locks		Power
Suspension		
Front		Tapered leaf springs
Rear		Laminated leaf springs
Brakes		
Service		Drum, air/hydraulic-type with ABS
Parking		Drum/driveline, internal expanding shoe
Exhaust		Air actuated
Frame		
Type		Ladder/straight
Section modulus		10.37 cu. in.
Yield strength		51,200 psi
RBM per rail		530,944 lb.-in.
Height/width		36.0"/33.1"
Fuel tank		50-gallon side mount
Electrical system		Two 12-volt, maintenance-free batteries – 799 CCA EA
Vehicle safety		Energy-absorbing steering wheel, crush bars in doors, daytime running lights and ABS standard



Dimensions

A. Usable cab to rear axle	128.5"	140.3"	152.1"	165.5"
B. Wheelbase	168.1"/MT only	179.9"	191.7"	205.1"
C. Overall length (end of frame)	284.3"	301.4"	318.7"	340.4"
Body size accommodated	16' 18' 20' 22'			

Weight (lb.)*

GVWR (lb.)/GAWR (lb.)	20,935 MT/19,850 AT	Front 7,275	Rear 13,660
GCWR (lb.) MT/AT	34,170 MT/26,000 AT		
Max. body-payload capacity (lb.)	13,375		

*Weight approximate. See dealer for details.



MITSUBISHI FUSO TRUCK OF AMERICA, Inc.

2015 Center Square Road
Logan Twp., NJ 08085

For the dealer nearest you,
or for more information,
visit our web site at:
www.mitfuso.com

Vehicle specifications are subject to change without notice. Photos and descriptions included on this spec sheet may vary in comparison to actual vehicle models.

Allison is a registered trademark of General Motors Corporation.

♻️ PRINTED IN THE U.S.A. ON
RECYCLED AND RECYCLABLE PAPER 6/04.
©2004 MITSUBISHI FUSO TRUCK OF
AMERICA, Inc.