



2005 MITSUBISHI FUSO



FM260

The **high-capacity** hauler
that's big on **dependability.**





2005 MITSUBISHI FUSO



FM260: Strength your company can build on.

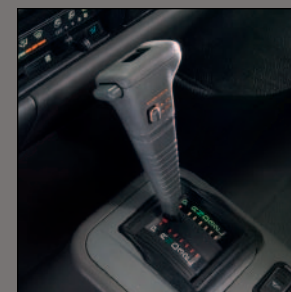
The largest payloads call for stronger frames, big power and lots of torque. Mitsubishi Fuso's FM260 model offers all three in abundance. Its rugged ladder-style frame with web-mounted crossmembers can handle bodies up to 28'. Its fuel-injected, intercooled, turbocharged 6-cylinder diesel engine delivers day-in day-out dependability and is easy to maintain.

The FM260's cab is most accommodating with a 6-way adjustable driver's suspension seat, tilt/telescoping steering wheel, superior wide-angle visibility and a fully trimmed interior that's exceptionally roomy and quiet. Mitsubishi Fuso cabovers work harder for your business.

And the FM260's productivity comes up big, every time.

FM260

- Available Allison® 5-speed automatic transmission with improved shifter
- Open-grate steps for safe entry/exit
- Contoured, color-coordinated front bumper
- Fixed console between seats with cupholders





Safety

Crush bar in each door

Energy-absorbing steering wheel

Daytime running lights

Air hydraulic brakes with ABS

Open-grate entry steps

Engine

Model	Mitsubishi 6M60
Type	SOHC 4-stroke cycle, water-cooled, turbocharged, intercooled diesel with 4 valves per cylinder
No. of cylinders	Six in-line
Piston displacement	460 cu.in. (7.5 liter)
Max. output (SAE, gross)	243 hp @ 2600 rpm
Max torque (SAE, gross)	514 lb.-ft. @ 1400 rpm
Air cleaner	Dry paper element with snorkel
Starter	12-volt
Alternator	12-volt, 100-amp
Cold weather starting aid	Individual ceramic-tipped glow-plugs

Body Colors

Natural White



Arcadia Silver



Jupiter Green



Mars Red



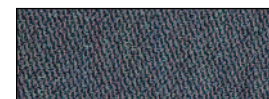
Shannon Blue



Immediately available in white. All other colors may be special ordered at no extra charge.

Fabric Style

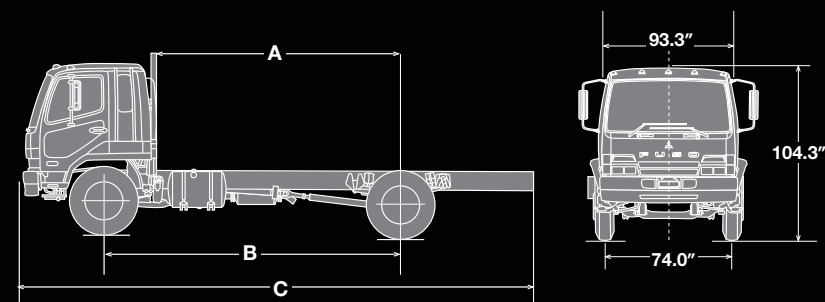
Blue and Gray Cloth



FM260 Specifications

Chassis

Clutch		Cerametallic
Clutch size		15"
Transmission		
Standard transmission		Mitsubishi 6-speed OD MT
Optional transmission		Allison 2400 Electronic 5-speed OD AT
Estimated top speed (mph)		78 MT/79 AT
Axles		
Front		Reverse Elliot, I-beam type, 10,800-lb. capacity
Rear		Full floating type, 20,280-lb. capacity
Final reduction gear		Single-reduction hypoid gear
Ratio		5.857 MT/5.857 AT
Curb weight base model		9,290 lb.
Turning diameter (short WB)		46.0 ft.
Tires (premium)		Single front, dual rear
Size		11R22.5 14PR Highway/Traction
Disc wheel		22.5" x 7.5"/8-lug
Steering		Ball-nut-type with integral-type hydraulic power booster Tilt/telescoping steering column with steering lock
Cruise control		Standard
Windows/door locks		Power
Suspension		
Front		Tapered leaf springs
Rear		Laminated leaf springs. Available air suspension on 218.5" and 239.4" wheelbase models
Brakes		
Service		Air/hydraulic drum with ABS
Parking		Drum/driveline, internal expanding shoe
Exhaust		Vacuum actuated
Frame		
Type		Ladder/straight
Section modulus		13.73 cu.in.
Yield strength		51,200 psi
RBM per rail		702,976 lb.-in.
Height/width		41.9" (39.8" air)/33.1"
Fuel tank		50-gallon side mount
Electrical system		Two 12-volt, maintenance-free batteries – 799 CCA EA
Vehicle safety		Energy-absorbing steering wheel, crush bars in doors, daytime running lights and ABS standard



Dimensions

A. Usable cab to rear axle	109.6"	146.7"	164.8"	183.3"	204.1"			
B. Wheelbase	144.9"/MT only	181.9"	200.0"	218.5"	239.4"			
C. Overall length (end of frame)	260.8"	312.8"	339.6"	367.1"	408.5"			
Body size accommodated	14'	16'	18'	20'	22'	24'	26'	28'

Weight (lb.)*

GVWR (lb.)/GAWR (lb.)	25,995 (23,250 Refuse AT)	Front 10,640	Rear 18,500
GCWR (lb.) MT/AT	40,780 MT/26,000 AT (23,250 Refuse)		
Max. body-payload capacity (lb.)	16,705		

*Weight approximate. See dealer for details.



MITSUBISHI FUSO
TRUCK OF AMERICA, Inc.

2015 Center Square Road
Logan Twp., NJ 08085

For the dealer nearest you,
or for more information,
visit our web site at:
www.mitfuso.com

Vehicle specifications are subject to change without notice. Photos and descriptions included on this spec sheet may vary in comparison to actual vehicle models.

Allison is a registered trademark of General Motors Corporation.

♻️ PRINTED IN THE U.S.A. ON
RECYCLED AND RECYCLABLE PAPER 6/04.
©2004 MITSUBISHI FUSO TRUCK OF
AMERICA, Inc.