

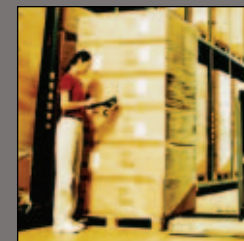


2006 MITSUBISHI FUSO



FM330

Easy-going **personality.**
Hard-working **design.**





2006 MITSUBISHI FUSO



FM330: Strength your company can build on.

The largest payloads call for stronger frames, big power and lots of torque. Mitsubishi Fuso's FM330 model offers all three in abundance. Its rugged ladder-style frame with web-mounted crossmembers can handle bodies up to 28'. Its direct-injected, intercooled, turbocharged 6-cylinder diesel engine delivers day-in day-out dependability and is easy to maintain.

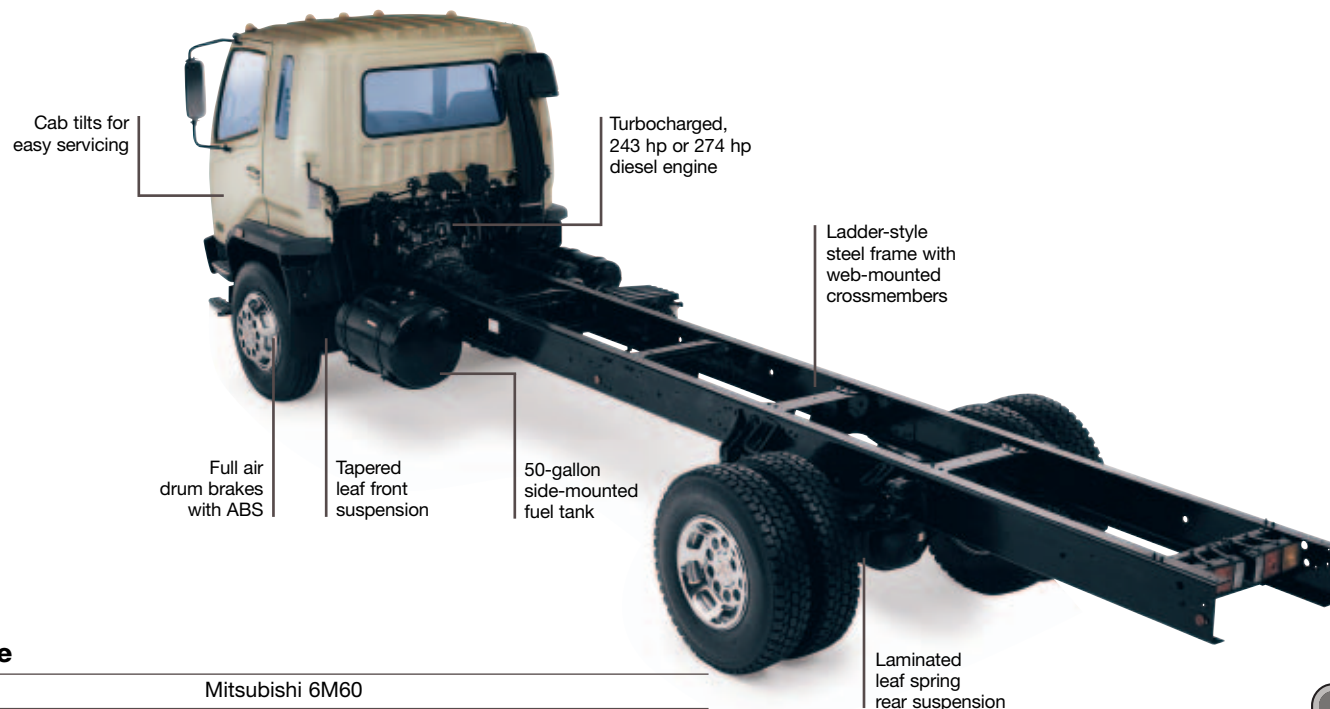
The FM330's cab is most accommodating with a 6-way adjustable driver's suspension seat, tilt/telescoping steering wheel, superior wide-angle visibility and a fully trimmed interior that's exceptionally roomy and quiet. Mitsubishi Fuso cabovers work harder for your business. And the FM330's productivity comes up big, every time.



FM330

- Open-grate steps for safe entry/exit
- Spacious interior is fully trimmed
- Fixed console between seats with cup holders
- Contoured, color-coordinated front bumper





Engine

Model	Mitsubishi 6M60
Type	SOHC 4-stroke cycle, water-cooled, turbocharged, intercooled diesel with 4 valves per cylinder
No. of cylinders	Six in-line
Piston displacement	460 cu.in. (7.5 liter)
Max. output (SAE, gross)	243 hp MT and Allison, 274 hp Eaton® transmission (@ 2600 rpm)
Max torque (SAE, gross)	516 lb.-ft. Mitsubishi MT and Allison AT/ 591 lb.-ft. Eaton MT (@ 1400 rpm)
Air cleaner	Dry paper element with snorkel
Starter	12-volt
Alternator	12-volt, 100-amp
Cold weather starting aid	Individual ceramic-tipped glow-plugs

Safety

Crush bar in each door

Energy-absorbing steering wheel

Daytime running lights

Air hydraulic brakes with ABS

High-visibility halogen headlamps

Open-grate entry steps

Body Colors

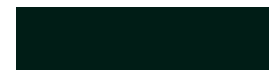
Natural White



Arcadia Silver



Jupiter Green



Mars Red



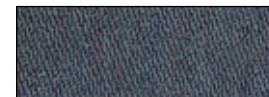
Shannon Blue



Immediately available in white. All other colors may be special ordered at no extra charge.

Fabric Style

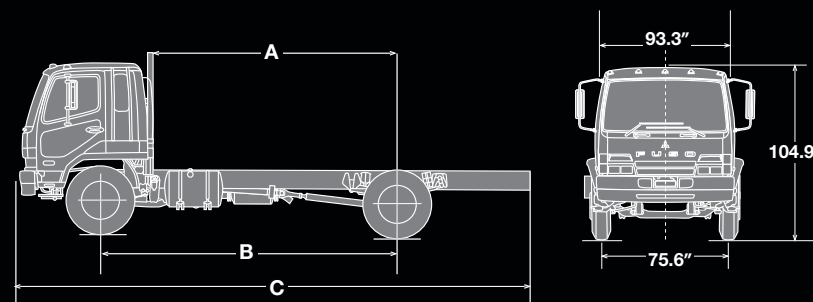
Blue and Gray Cloth



FM330 Specifications

Chassis

Clutch		Cerametallic
Clutch size		15"
Transmission		
Standard transmissions		Allison® MD 3060 Electronic 6-speed OD AT
Optional transmission		Mitsubishi 6-speed Direct MT or Eaton® 9-speed Direct MT
Estimated top speed (mph)		74 Mitsubishi MT/75 Allison AT/80 Eaton MT
Axles		
Front		Reverse Elliot, I-beam type, 11,905-lb. capacity
Rear		Full floating type, 22,485-lb. capacity
Final reduction gear		Single-reduction hypoid gear
Ratio		5.857 Mitsubishi MT/6.666 Allison AT/4.222 Eaton MT
Curb weight base model		10,220 lb. (Eaton transmission only)
Turning diameter (short WB)		43.4 ft.
Tires (premium)		Single front, dual rear
Size		11R22.5 14PR Highway/Traction
Disc wheel		22.5" x 7.5" /8-lug
Steering		Ball-nut-type with integral-type hydraulic power booster Tilt/telescoping steering column with steering lock
Cruise control		Standard
Windows/door locks		Power
Suspension		
Front		Tapered leaf springs
Rear		Laminated leaf springs
Brakes		
Service		Full air drum with ABS
Parking		Spring brakes on rear axle
Exhaust		Air actuated
Frame		
Type		Ladder/straight
Section modulus		16.96 cu.in.
Yield strength		51,200 psi
RBM per rail		868,352 lb.-in.
Height/width		42.3"/33.1"
Fuel tank		50-gallon side mount
Electrical system		Two 12-volt, maintenance-free batteries – 799 CCA EA
Vehicle safety		Energy-absorbing steering wheel, crush bars in doors, daytime running lights and ABS standard



Dimensions

A. Usable cab to rear axle	109.6"	146.7"	164.8"	183.3"	204.1"
B. Wheelbase	Eaton only/144.9"	181.9"	200.0"	218.5"	239.4"
C. Overall length (end of frame)	260.8"	312.8"	339.6"	367.1"	408.5"
Body size accommodated	14' 16' 18' 20' 22' 24' 26' 28'				

Weight (lb.)*

GVWR (lb.)/GAWR (lb.)	32,900	Front 11,700	Rear 21,200
GCWR (lb.) MT/AT	48,000	Mit MT and Allison AT/55,100 Eaton MT	
Max. body-payload capacity (lb.)	22,680		

*Weight approximate. See dealer for details.



MITSUBISHI FUSO
TRUCK OF AMERICA, Inc.
 2015 Center Square Road
 Logan Twp., NJ 08085

For the dealer nearest you,
 or for more information,
 visit our web site at:
www.mitfuso.com

Vehicle specifications are subject to change without notice. Photos and descriptions included on this spec sheet may vary in comparison to actual vehicle models.

For warranty limitations and details, see your local dealer.

Allison is a registered trademark of General Motors Corporation. Eaton is a registered trademark of Eaton Corporation.

♻️ PRINTED IN THE U.S.A. ON
 RECYCLED AND RECYCLABLE PAPER 5/05.
 ©2005 MITSUBISHI FUSO TRUCK OF
 AMERICA, Inc.