

The 2006 Saturn RELAY











The RELAY-3 shown in Black Cherry. To see the RELAY in every available colour, visit [saturncanada.com](http://saturncanada.com)



*You are a parent, a coach, a protector.*

You are a music lover, a movie fan, a multimedia enthusiast.

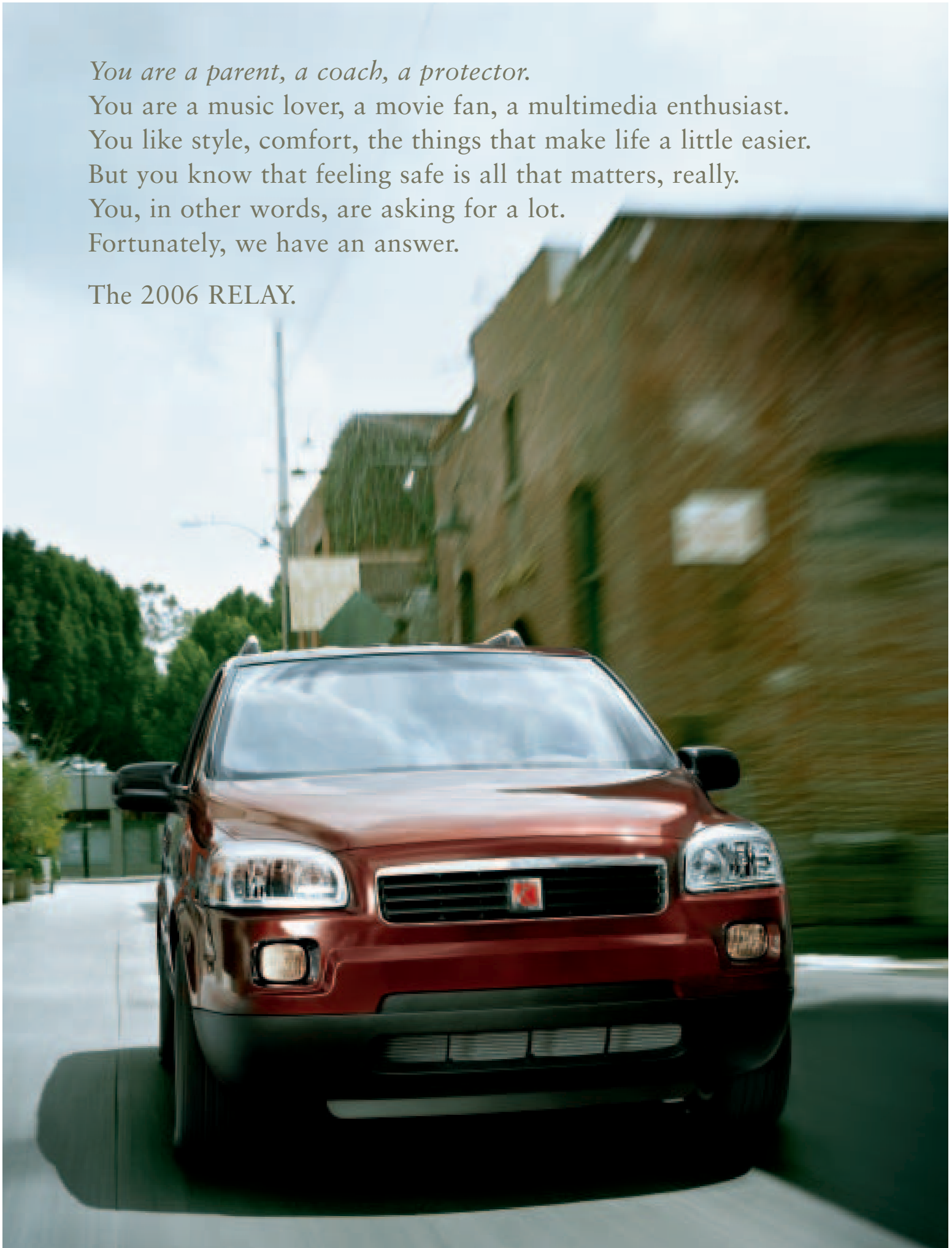
You like style, comfort, the things that make life a little easier.

But you know that feeling safe is all that matters, really.

You, in other words, are asking for a lot.

Fortunately, we have an answer.

The 2006 RELAY.



*Master of chaos, organizer of families.* Beneath the RELAY's clean exterior lines lies a versatile range of storage solutions, all designed to keep everything in order. There's the customizable overhead rail system, available hideaway rear storage bins, available second row toy box, and seatback storage that's perfect for holding headphones and all the other things that always seem to end up underfoot. What's more, the RELAY's cargo space can be quickly configured and reconfigured, thanks to second and third row seats that can be folded flat or removed altogether.<sup>1</sup> For the really big things, Saturn Retailers have lots of ways to equip the RELAY's available trailer hitch and roof rack cross bars so you can bring skis, snowboards or bikes, a cargo box, boat or even a camper.<sup>2</sup>



<sup>1</sup>When equipped with side air bags, second row captain's chairs cannot be removed. <sup>2</sup>Maximum trailer ratings are calculated assuming a properly equipped base vehicle plus driver. See specifications page for details.







Both of the RELAY's available V-6 engines can tow up to 907 kilograms (2,000 lb.).<sup>2</sup> Shown in Coastal Grey with available VersaTrak all-wheel drive.



Features like the 50/50-split folding third row seats and second row fold-flat seats make the interior of the RELAY<sup>3</sup> highly flexible.





Shown with Tan Leather Package and other available features.



The RELAY-3 shown. Visit [saturncanada.com](http://saturncanada.com) for all your audio options.





*The secret to a happy road trip: Stay entertained.*

When it comes to long family road trips, multiple entertainment options are in order. So no matter which RELAY you choose, a DVD entertainment system and CD/MP3 player come standard, along with a sound system that allows passengers to listen to multiple entertainment sources. The RELAY is available with a 115-volt power outlet, so passengers can even plug in a video game console or laptop. Suddenly, everyone is happy.



Standard DVD entertainment system.



*No mile goes unprotected.* Saturn safety engineers don't just think about what happens during a crash; they design systems that help you avoid crashes altogether. For instance, StabiliTrak<sup>®</sup> is an available vehicle stability enhancement system that helps keep you going in the right direction on slick roads or during emergency manoeuvres. Our Passenger Sensing System automatically turns the front passenger air bag off if it detects that the seat occupant would be harmed if the air bag deployed.<sup>1</sup> And, for added peace of mind, every single RELAY we build comes with OnStar<sup>®</sup> and a one-year subscription to the Safe & Sound Service Plan. OnStar can save time by unlocking locked doors; more importantly, it can help save lives by automatically sending for assistance if your air bags deploy.<sup>2</sup> Thanks to all the safety-minded thinking that goes into the RELAY, it earned a five-star front crash test safety rating from NHTSA.<sup>3</sup> For a complete list of the RELAY's safety features, including anti-lock disc brakes with available Traction Control and available second row side air bags,<sup>1</sup> visit [saturncanada.com](http://saturncanada.com).







<sup>1</sup>Air bag inflation can cause severe injury or death to anyone too close to the bag when it deploys. Be sure every occupant is properly restrained. See inside back cover for important information about air bags, including a note about child safety. <sup>2</sup>See inside back cover for important information about OnStar. <sup>3</sup>See inside back cover for important information about the RELAY's safety rating.

## RELAY Exterior Colours

So many colours, so little time. The fastest way to see the RELAY in every available hue is to visit [saturncanada.com](http://saturncanada.com)



Polar White



Silver Pearl



Bronzed Pewter



Black Cherry



Coastal Grey



Golden Cashmere



Midnight Blue



Forest Green

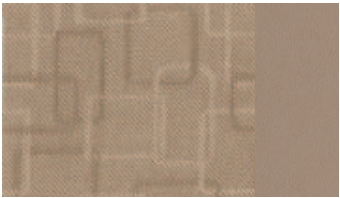
## RELAY Interior Colours



Grey Cloth



Grey Leather



Tan Cloth



Tan Leather

## RELAY Colour Combinations

Exterior Paint	Cloth	Available Leather Appointments <sup>1</sup>
Polar White	Grey, Tan	Grey, Tan
Silver Pearl	Grey	Grey
Bronzed Pewter	Tan	Tan
Black Cherry	Grey, Tan	Grey, Tan
Coastal Grey	Grey, Tan	Grey, Tan
Golden Cashmere	Tan	Tan
Midnight Blue	Grey, Tan	Grey, Tan
Forest Green	Grey, Tan	Grey, Tan

## RELAY Wheels



17" Standard Cover  
(RELAY•2)



17" Standard Alloy  
(RELAY•3)

<sup>1</sup>First and second row seats only. <sup>2</sup>Cargo and load capacity limited by weight and distribution. <sup>3</sup>Maximum trailer ratings are calculated assuming a properly equipped base vehicle plus driver. The weight of other optional equipment, passengers and cargo will reduce the maximum trailer weight your vehicle can tow. See your Retailer for details. <sup>4</sup>Based on GM and EnerGuide testing in Canada. Canadian EPA estimates not yet available. <sup>5</sup>Requires StabiliTrak and Safety Package. <sup>6</sup>FWD models require Touring Package. <sup>7</sup>See inside back cover for important information about air bags, including a note about child safety. <sup>8</sup>See inside back cover for important information about OnStar. <sup>9</sup>Toy box available with bucket seats only. <sup>10</sup>Not available at start of production.



RELAY Specifications

Engine and Transmission	RELAY-2 FWD	RELAY-3 FWD	RELAY-3 FWD (3.9L)	RELAY-3 AWD
Engine	3.5-litre, OHV, V-6	3.5-litre, OHV, V-6	3.9-litre, OHV, V-6	3.5-litre, OHV, V-6
Horsepower	201 @ 5,200 rpm	201 @ 5,200 rpm	240 @ 5,600 rpm	201 @ 5,200 rpm
Torque (lb-ft)	216 @ 4,000 rpm	216 @ 4,000 rpm	240 @ 4,400 rpm	216 @ 4,000 rpm
Transmission	4-speed automatic	4-speed automatic	4-speed automatic	4-speed automatic
Chassis	Front-engine/ front-wheel drive (FWD); Front-engine/all-wheel drive (AWD) Steel safety cage with front and rear crumple zones and side-impact protection Front independent MacPherson struts with stabilizer bar; rear semi-independent twist beam axle with stabilizer bar (FWD) Front independent MacPherson struts with stabilizer bar; rear independent double wishbone with isolated cradle and stabilizer bar (AWD) Power (hydraulic) Four-wheel anti-lock disc			
Drivetrain				
Body construction				
Suspension				
Steering				
Brakes				
Weights and Capacities				
Curb weight kg (lb.)	1,938 (4,231)	1,956 (4,312)	1,982 (4,370)	2,087 (4,600)
Passenger volume litres (cu. ft.)	4,174 (147.4)	4,174 (147.4)	4,174 (147.4)	4,174 (147.4)
Cargo-area volume <sup>2</sup>				
behind third row seats litres (cu. ft.)	762 (26.9)	762 (26.9)	762 (26.9)	762 (26.9)
with third row seats removed litres (cu. ft.)	2,098 (74.1)	2,098 (74.1)	2,098 (74.1)	2,098 (74.1)
with second and third row seats removed litres (cu. ft.)	3,865 (136.5)	3,865 (136.5)	3,865 (136.5)	3,865 (136.5)
Fuel capacity litres (Imp. gal.)	94.7 (20.8)	94.7 (20.8)	94.7 (20.8)	94.7 (20.8)
Towing capacity max. kg (lb.) <sup>3</sup>	907 (2,000)	907 (2,000)	907 (2,000)	907 (2,000)
Passenger seating	7	7	7	7
Fuel Economy Estimates City / Hwy L/100 km (mpg) <sup>4</sup>				
Automatic transmission	12.9/8.7 (22/32)	12.9/8.7 (22/32)	13.1/8.5 (22/33)	13.8/9.5 (20/30)
Exterior Dimensions mm (in.)				
Length	6,204 (204.9)	6,204 (204.9)	6,204 (204.9)	6,204 (204.9)
Wheelbase	3,076 (121.1)	3,076 (121.1)	3,076 (121.1)	3,076 (121.1)
Width	1,829 (72.0)	1,829 (72.0)	1,829 (72.0)	1,829 (72.0)
Height	1,742 (68.6)	1,831 (72.1)	1,831 (72.1)	1,831 (72.1)
Track, front/rear	1,585/1,590 (62.4/62.6)	1,585/1,590 (62.4/62.6)	1,585/1,590 (62.4/62.6)	1,585/1,590 (62.4/62.6)
Interior Dimensions (first / second / third row mm (in.))				
Legroom	1,013/988/919 (39.9/38.9/36.2)	1,013/988/919 (39.9/38.9/36.2)	1,013/988/919 (39.9/38.9/36.2)	1,013/988/919 (39.9/38.9/36.2)
Headroom	1,011/988/968 (39.8/38.9/38.1)	1,011/988/968 (39.8/38.9/38.1)	1,011/988/968 (39.8/38.9/38.1)	1,011/988/968 (39.8/38.9/38.1)
Shoulder room	1,521/1,554/1,234 (59.9/61.2/48.6)	1,521/1,554/1,234 (59.9/61.2/48.6)	1,521/1,554/1,234 (59.9/61.2/48.6)	1,521/1,554/1,234 (59.9/61.2/48.6)

RELAY Features and Options

For a complete list, visit saturncanada.com

Comfort and Convenience	RELAY-2 FWD	RELAY-3 FWD	RELAY-3 FWD (3.9L)	RELAY-3 AWD
50/50-split folding third row bench seat	●	●	●	●
Air conditioning with particle filter	●	●	●	●
Preferred Package: ultrasonic rear parking assist and power driver-side door	—	○	○	○
Driver and front passenger captain's chairs with seatback storage and foldaway tray	●	●	●	●
Driver Information Centre with outside temperature and compass display and personalization capabilities	—	●	●	●
Exterior roof rails	○	●	●	●
Leather-appointed first and second row seats, heated front seats and six-way power passenger seat	—	○	○	○
Leather-wrapped steering wheel with audio controls	—	●	●	●
Overhead rail system	●	●	●	●
Overhead rail storage bins (2) with CD/DVD case and first-aid kit	○	○	○	○
Power passenger-side door	○	○	○	○
Power windows, door locks and heated exterior mirrors; remote keyless entry; cruise control	●	●	●	●
Convenience Package: dual illuminated visor vanity mirrors, power third row vent windows, and Saturn Security System	○	●	●	●
Rear air conditioning with separate rear climate controls	○	●	●	●
Rear washer/wiper and defogger	●	●	●	●
Remote engine start	○	●	●	●
Second row fold-flat, tumbling and removable bucket seats	●	—	—	—
Second row fold-flat captain's chairs with folding armrests, foldaway tray and seatback storage	○	●	●	●
Six-way power driver's seat	○	●	●	●
Touring Package: sport-tuned suspension with front stabilizer bar, specifically-tuned shock valving, touring tires, inflater tool kit and Automatic Level Control <sup>5</sup>	—	●	●	—
Trailerling Provisions: heavy-duty cooling system, trailer harness and 125-amp generator <sup>6</sup>	○	○	○	○
Universal home remote and overhead storage bin with sunglass insert	—	●	●	●
Rear convenience centre	●	●	●	●
Safety and Security				
Automatic headlamps and daytime running lamps	●	●	●	●
Dual-stage front air bags with Passenger Sensing System <sup>7</sup>	●	●	●	●
First row side-impact air bags (FWD models also include Traction Control) <sup>7</sup>	○	○	○	●
Height-adjustable front safety belts with pretensioners and energy-absorbing retractors	●	●	●	●
Lower Anchorages and Top Tethers for Children (LATCH) in second row seating positions	●	●	●	●
OnStar® System with one-year Safe & Sound Service Plan <sup>8</sup>	●	●	●	●
Safety Package: Traction Control and first row side air bags	○	○	○	●
Second row side-impact air bags (includes captain's chairs on RELAY-2) <sup>7</sup>	○	○	○	○
StabiliTrak® vehicle stability enhancement system	○	○	○	—
Three-point safety belts in all seating positions	●	●	●	●
Entertainment Systems				
CD/MP3 player with AM/FM stereo and eight speakers	●	●	●	●
DVD entertainment system with 17.7 cm (7 in.), flip-down LCD screen and remote control	●	●	●	●
Entertainment Package: dual channel wireless headphones, 115-volt power outlet and second row toy box <sup>9</sup>	○	●	●	●
GPS Navigation System: 16.5 cm (6.5-in.) in-dash touch screen and CD/MP3 player with eight speakers <sup>10</sup> (Interim availability)	—	○	○	○
PhatNoise® Mobile Digital Media (Interim availability)	○	○	○	○
Rear seat audio controls, auxiliary audio/video jacks and dual headphone jacks	●	●	●	●
Six-disc, in-dash CD/MP3 player with AM/FM stereo and eight speakers	○	○	○	○

● = standard    ○ = available    — = not available

Featured Equipment



**Seatback storage.** Captain's chairs do double duty with additional seatback storage spaces. Perfect for headphones, CDs and other easily misplaced items.



**Long-range fuel tank.** The fewer stops you make, the faster you get there. That's why the RELAY has a class-leading 94.7 litre (20.8 gallon) fuel tank<sup>1</sup> — to keep the stops to a minimum.



**Heated side mirrors.** Now you don't have to roll down the window and use your gloves to clear your side mirrors, because the RELAY's heated mirrors will do the work for you.



**Overhead rail system.** In addition to housing the DVD player and OnStar System,<sup>2</sup> the overhead rail system is customizable with storage bins and inserts. Visit [saturncanada.com](http://saturncanada.com) for details.



**Hideaway rear storage bins.** Compartmentalized bins keep wet umbrellas and muddy boots away from jackets, toys and groceries. Standard on the RELAY•3.



**Steering wheel audio controls.** Control the CD player and stereo without taking your eyes off the road or your hands off the wheel. Standard on the RELAY•3.

<sup>1</sup>Excludes other GM vehicles. <sup>2</sup>See inside back cover for important information about OnStar.



Available Equipment



**Remote engine start.** Take the chill off those don't-make-me-get-out-of-bed mornings by getting the RELAY warmed up from inside the house.



**Inflator tool kit.** In addition to a sportier suspension system, the Touring Package includes Automatic Level Control and this kit for inflating things like tires, rafts and pool toys.



**Power sliding door.** Opening and closing the RELAY's side door is even easier when you can do it with the push of a button.



**Sit n' Lift™ Mobility Assistance.** Rotates, extends and lowers the second row seat on the passenger side for easy exit and entry. Available with captain's chairs only.



**GPS navigation<sup>1</sup> radio.** Uses GPS and a mapping DVD to visually and audibly tell you how to get from here to there. A CD player and radio are also integrated into the system. (Interim availability)



**Toy box.** Lift the lid, and you'll find plenty of space for toys, DVDs or a game console. Available with second row bucket seats only.

Accessories



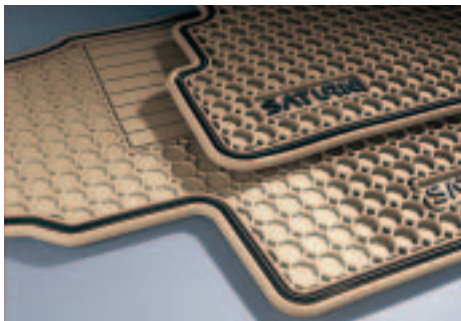
**Splash guards.** Keep your tires from splattering mud, salt, pebbles and other road rubble onto the sides of your RELAY.



**Overhead bin inserts.** You can add up to three bins to the overhead rail storage system. Available inserts include flashlights, CD/DVD case, first-aid kit, and more.



**Bike attachment.** Attaches to the available trailer hitch for easy loading and unloading. A ski and snowboard attachment is also available.



**Floor mats.** Trap mud, ice and snow before they end up in the carpet. Made of rubber, so they're also easy to clean.

<sup>1</sup>See features and options page for details.

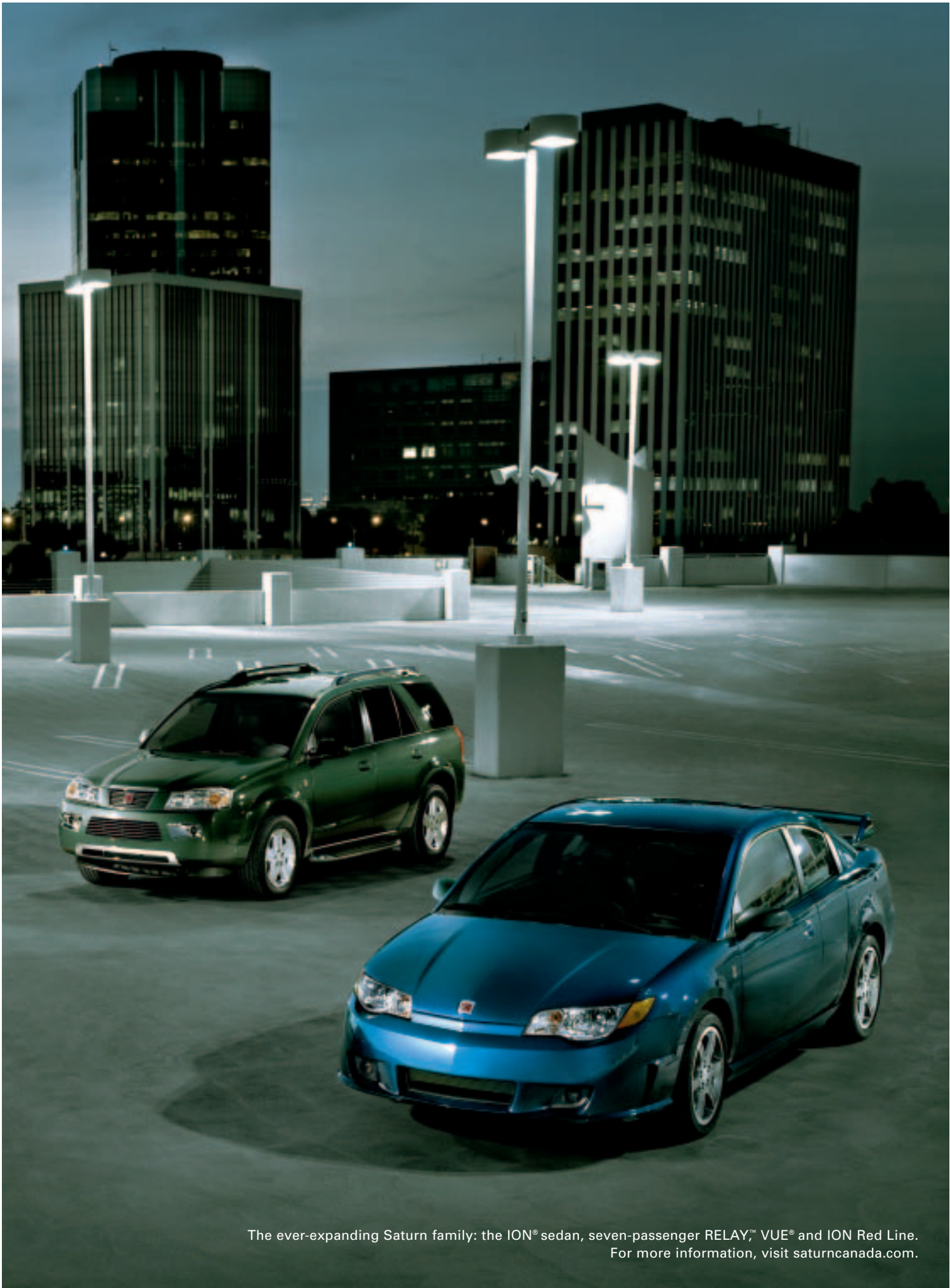


**Cargo box attachment.** Because there's always more to bring, we give you an extra place to stow your extras.









The ever-expanding Saturn family: the ION® sedan, seven-passenger RELAY™, VUE® and ION Red Line.  
For more information, visit [saturncanada.com](http://saturncanada.com).



*What makes a Saturn a Saturn?*

It's more than you can see in a picture or read on a page.

What makes Saturn different can only be experienced.

It's being with you today, tomorrow and for the next 200,000 kilometres.

It's about a no-hassle experience.

It's about giving you thirty days to change your mind.<sup>1</sup>

It's about making sure you love what you drive.

In other words, it's about you.



<sup>1</sup>See inside back cover for details about Saturn's 30-day Vehicle Exchange Program.



*It all started with the very first Saturn.* How do you design a car people will dream about? How do you build a car people will love? Finding the answer, year after year, is what keeps us going. And this year, we've been especially busy designing a whole new generation of vehicles that will re-establish what it means to own, love and drive a Saturn. In 2006, you'll meet the SKY™ roadster, followed by a continuing stream of surprises. In every vehicle, you'll see even more sculptural lines, glowing interiors, advanced features, and soulful expressions of Saturn's philosophy of putting people first. In other words, the next few years are going to be big. And, as always, it's going to be a fun ride.

The vehicle shown is a pre-production model; the actual production model may vary.





### Important words about this brochure

We have tried to make this brochure comprehensive and factual. We reserve the right, however, to make changes at any time, without notice, in prices, colours, materials, equipment, specifications, models and availability. Specifications, dimensions, measurements, ratings and other numbers in this brochure and other printed materials provided at the Retailer or affixed to vehicles are approximates based upon design and engineering drawings and prototypes and laboratory tests. Your vehicle may differ due to variations in manufacture and equipment. Since some information may have been updated since the time of printing, please check with your Saturn Retailer for complete details. Saturn reserves the right to lengthen or shorten the model year for any product for any reason, or to start and end model years at different times.

### A note about air bags and child safety

Always use safety belts and proper child restraints. Even in vehicles equipped with air bags and the Passenger Sensing System, children are safer when properly secured in a rear seat. Never place a rear-facing infant restraint in the front seat of any vehicle equipped with an active air bag. Air bag inflation can cause severe injury or death to anyone too close to the bag when it deploys. Be sure every occupant is properly restrained. See your vehicle's Owner's Handbook and child-safety seat instructions for more information.

### OnStar® information

OnStar services require vehicle electrical system (including battery), wireless service, and GPS satellite signals to be available and operating for features to function properly. OnStar acts as a link to existing emergency service providers. Subscription Service Agreement required. Due to the transition of the wireless industry from analogue to digital technology, as of January 1, 2008, OnStar plans to offer service only through equipment that operates on the digital network, which may require the purchase of a system upgrade for eligible vehicles. Call 1-888-4-ONSTAR (1-888-466-7827) or visit [onstar.ca](http://onstar.ca) for OnStar's Terms and Conditions, Privacy Policy, and system limitations and details.

### Important information about the RELAY's safety rating

Testing conducted by the US National Highway Traffic Safety Administration (NHTSA) on four-door 2006 Saturn RELAY for front driver and passenger impact. The government star rating is part of the NHTSA New Car Assessment Program (NCAP). Visit [safercar.gov](http://safercar.gov) for details.

### Saturn's Vehicle Exchange Program

Within the first 30 days or 2,500 kilometres of delivery, whichever comes first, the original purchaser may exchange his or her Saturn vehicle if not completely satisfied. In the event that an owner returns his or her vehicle, he or she will exchange it for another 2006 Saturn vehicle. See Retailer for limitations and restrictions. All the same factory-supported initiatives will be included on the exchange vehicle that were on the original vehicle. The vehicle must be returned in the condition in which it was delivered, without damage or excessive wear and tear. If non-warranty repairs equal to or greater than \$500 have been performed or are necessary, the vehicle is not eligible to be returned. If less than \$500, the damage must be repaired or the estimate deducted from the credit toward the exchange vehicle.

### New Vehicle Limited Warranty

Covered for 3 years/60,000 miles (whichever comes first): the complete vehicle, tires, towing to your nearest Saturn Retailer, repairs made to correct any vehicle defect, with no charge for most warranty repairs.

### An important note about alterations and warranties

Installations or alterations to the original equipment vehicle (or chassis) as distributed by General Motors are not covered by the General Motors New Vehicle Limited Warranty. The special body company, assembler, equipment installer or upfitter is solely responsible for warranties on the body or equipment and any alterations (or any effect of the alterations) to any of the parts, components, systems or assemblies installed by GM. General Motors is not responsible for the safety or quality of design features, materials, or workmanship of any alterations by such suppliers.

### Assembly

Saturn vehicles and their components are assembled or produced by different operating units of General Motors, its subsidiaries or suppliers to GM worldwide. We sometimes find it necessary to produce Saturn vehicles with different or differently sourced components than originally scheduled. Since some options may be unavailable when your vehicle is assembled, we suggest that you verify that your vehicle includes the equipment you ordered, or, if there are changes, that they are acceptable to you.

### Engines

Saturn products are equipped with engines produced by GM Powertrain or other suppliers to GM worldwide. The engines in Saturn products may also be used in other GM makes and models.

### Updated service information

Saturn Retailers receive useful service bulletins about Saturn products. See your Retailer for more information or visit [www.saturncanada.com](http://www.saturncanada.com)

\*The 2006 vehicle's powertrain components are covered by a limited Special Powertrain Component Coverage for up to 5 years or 100,000 km, whichever comes first.  
†Within the first 30 days or 2,500 km of delivery, whichever comes first. ††See Retailer or visit [saturncanada.com](http://saturncanada.com) for limitations, restrictions and coverages.  
PhatNoise is a registered trademark of PhatNoise, Inc. (Interim availability); OnStar is a registered trademark of OnStar Corporation.  
©2005 Saturn Corporation. Saturn and its logo are registered trademarks of Saturn Corporation. All rights reserved.



*There's something we'd like to say. And that is: Yes.*  
Yes to a highly evolved sense of style. Yes to having the flexibility to bring more. Yes to designs that turn heads and features that embrace technology. Yes to happy kids and quiet kids. Yes to making carpools feel like less of a chore. Yes to making memories and swapping stories. Yes to feeling protected. Yes to everything we love about driving. Yes to the 2006 Saturn RELAY.



*saturncanada.com*

123-06-B-003E