



# NV<sup>®</sup> PASSENGER

2021



Accept a challenge with a V8 engine that produces 375 hp and 387 lb-ft of torque. Defy the definition of what's possible with room for up to 12 and the versatility of a class-leading 324 seating configurations.<sup>1</sup> Feel the confidence that comes from rigorously tested components backed up by America's Best Commercial Van Warranty (see dealer for limited warranty details).<sup>2</sup> The 2021 Nissan NV® Passenger. Don't go home, go big.

See NV® Passenger in action here:





### Capable cabin

When the driver's seat needs to turn into an office chair, NV® Passenger has you covered. With flexible class-exclusive features like an available multi-tasking center console<sup>4</sup> and fold-down passenger seat,<sup>5</sup> plus plenty of power options, productivity never has to slow down.

Fold-down passenger seat<sup>5</sup>

Flexible center console<sup>4,6</sup>

Two 120-volt power outlets<sup>4,7</sup>



### Exceptional room and comfort

With room for up to 12 passengers, and plenty of space between rows, everyone can stretch out. And with integrated headrests, slide-out cup holders, available reading lights and power outlets, the NV Passenger van takes comfort to the next level.

### Massive interior space

With 324 seating configurations, NV Passenger gives you plenty of options for transporting gear. Remove the fourth-row seats and the volume jumps to 89.4 cubic feet. Take out the third row as well, and you've got 151.6 cubic feet of space. And with all the rows removed, there's a massive 218.9 cubic feet of cargo space ready for you to use.<sup>8, 9, 10</sup>

218.9 cu. ft. of cargo space<sup>8</sup>

Six independently removable rear seats

10.6' maximum cargo length<sup>8</sup>



CLASS-LEADING **324** SEATING CONFIGURATIONS<sup>1</sup>



### Hardworking technology

Never miss a beat, thanks to NissanConnect® with Navigation and Nissan Mobile Partner. Standard on NV Passenger SV and above, this system gives you a suite of high-tech features like SiriusXM® Traffic and Travel Link ready to give your business a boost. You'll also have standard features like Hands-free Text Messaging Assistant, and a convenient RearView Monitor.<sup>11, 12, 13, 14</sup>

RearView Monitor<sup>14</sup>

5.8" color touch-screen display<sup>6</sup>

Hands-free Text Messaging Assistant<sup>13</sup>



Over **800,000** miles and 7,000 quality and durability tests

When it comes to making the toughest business vans you can buy, we go the extra distance for you. We simulate years of corrosion, soaking a vehicle with salt, baking it, then pounding it around a test track. We wreak havoc with suspension and body components by driving through potholes, dips, and over 4x4 beams. Special chambers crank up the heat to 140° and humidity to 95% to break down seals and age interiors. We go to such extremes because every day, you depend on your Nissan Commercial Van to do your job. And that's the motivation for us to do ours.



Going above and beyond is the Nissan way. After passing all of our brutal quality and durability testing, we're sure you'll have a van you can count on. To prove our confidence and our commitment, we are pleased to offer America's Best Commercial Van Warranty, a bumper-to-bumper limited warranty for 5 years or 100,000 miles, whichever comes first. And that means we've got your back, so you can keep moving forward. For more details of the limited warranty, please go to [NissanUSA.com](https://www.nissanusa.com) or ask your Nissan Business Certified Dealer.<sup>2</sup>

America's Best Commercial Van Warranty  
**5 YEARS/100,000 MILES**  
**BUMPER-TO-BUMPER WARRANTY<sup>2</sup>**

See dealer for limited warranty details.



It's a Nissan Commercial Dealer that specializes in selling and servicing the entire NV® lineup. Only Business Certified Dealers offer exclusive commercial incentive packages while providing dedicated Commercial Vehicles Account Managers and Priority Service. We offer complimentary upfit packages as part of our exclusive commercial incentive program. We also offer Commercial Lending Programs and much more.<sup>8, 9, 10</sup>

### Key Benefits from Business Certified Dealer:

- Priority Service with Next Available Bay and Next Available Technician
- Complimentary shuttle service
- Special Commercial Lending programs, including available lines of credit
- Available Demonstrator Vehicles
- Dedicated Commercial Vehicles Account Manager to handle commercial customer transactions at your location
- Mailings with special offers and incentives
- Fleet Pricing available for qualified accounts
- Access to Commercial Vehicles inventory
- 24-hour towing with Roadside Assistance, including Trip Interruption reimbursement on select models<sup>15</sup>
- Commercial service advisors to get you on the road quickly and minimize downtime
- A commercial sales and service experience that fits your schedule
- Qualifying customers will receive support from the Commercial Upfit Incentive Program, and will be able to choose from complimentary options: cargo management equipment or cash back – offers vary by model.<sup>8, 10</sup>



## Business Certified Incentive Program

When you purchase your NV® Passenger at a Business Certified Dealer, you can give your business a powerful boost right from the start. Choose from a range of upfit allowance incentives designed to help your hard-working dollar go further.<sup>9,10</sup>

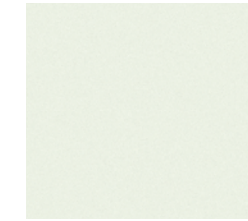


### Commercial Upfit Allowance Incentive

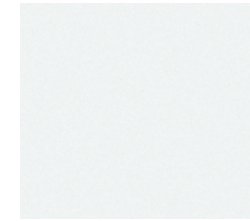
This option allows eligible customers to take advantage of an upfit allowance incentive. See your local Nissan Commercial Vehicles Dealer for complete guidelines surrounding the upfit allowance amounts and eligibility requirements.<sup>9,10</sup>

## CHOOSE YOUR COLOR

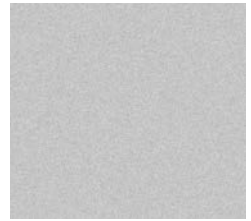
Nissan has taken care to ensure that the digital color swatches presented here are the closest possible representation of actual vehicle colors. Swatches may vary slightly due to viewing light or screen quality. Please see the actual vehicle and colors at your dealer.



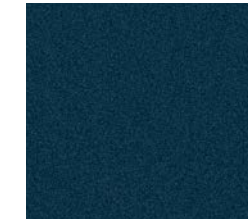
Pearl White TriCoat<sup>16</sup>  
S|SV|SL



Glacier White  
S|SV|SL



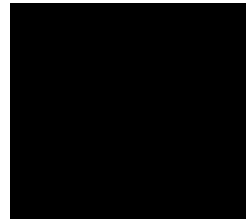
Brilliant Silver Metallic  
S|SV|SL



Arctic Blue Metallic<sup>16</sup>  
SV|SL



Cayenne Red Metallic  
S|SV|SL



Super Black  
S|SV|SL



Nissan NV3500® HD Passenger SL shown in Beige Leather.<sup>17</sup>

## CHOOSE YOUR ACCESSORIES



### A. **Splash Guards**

Keep mud and debris where it belongs, on the splash guard.

### B. **All-Season Floor Mats**

Because the weather outside isn't always delightful.

### C. **Hitch Ball Mount, Class III<sup>19</sup>**

We'll hook you up properly.

### D. **Telescoping Tow Mirrors**

Telescoping mirrors slide outward for enhanced visibility.

### E. **Hood Protector**

Give your hood a fighting chance against bugs and road grime.

### F. **Nissan Vehicle Tracking and Recovery System<sup>11</sup>**

Keep your Nissan yours. If it goes missing, we can help you find it.

### G. **Weight-distributing Hitch Ball Mount, Class IV<sup>19</sup>**

Makes for a safer ride when towing heavy loads.

### H. **4" Drop Hitch Ball Mount, Class III<sup>19</sup>**

If you're getting hitched, do it right.

#### Additional Accessories:

- Carpeted Floor Mats
- Tow Hitch Receiver, Class IV<sup>19</sup>
- Hitch Ball, Class III<sup>19</sup>
- Under-seat Cup Holder
- Emergency Road Kit
- First-aid Kit
- Family Travel Clean-up Kit
- Nissan Stainless Steel License Plate Frame
- Nissan Valve Stem Caps
- And More

For more information and to shop online for NV<sup>®</sup> Passenger Genuine Nissan Accessories, go to [bit.ly/21NVPassenger-Accys](http://bit.ly/21NVPassenger-Accys)



## GENUINE NISSAN ACCESSORIES

# Take your business to the next level

Every Genuine Nissan Accessory is custom-fit, custom-designed and durability-tested. Each one is backed by Nissan's 5-year/100,000-mile (whichever occurs first) limited warranty (if installed by dealer at the time of purchase), and can be financed when installed by dealer at time of purchase.<sup>18</sup>



To see short videos on Genuine Nissan Accessories in action, go to [bit.ly/21NVPassenger-Vid](http://bit.ly/21NVPassenger-Vid)

**Nissan NV3500<sup>®</sup> HD Passenger SV** shown in Brilliant Silver Metallic with Hood Protector, Telescoping Tow Mirrors, Tow Hooks, Side-Window Deflectors, Body Side Moldings, and Splash Guards.

## CHOOSE YOUR TRIM LEVEL

### NV3500® HD S INCLUDES:

- 4.0-liter DOHC V6 engine
- 5-speed automatic transmission
- 14" vented disc brakes front/rear
- 17" steel wheels with 245/70R17 tires
- Black exterior trim
- Air conditioning
- Remote keyless entry
- Water-repellent cloth seats with vinyl wear patches on inner and outer bolsters
- 12-passenger seating capacity
- 324 seating configurations
- Power door locks and front windows
- Cruise control
- Ten exterior roof rack-mounting points<sup>8</sup>
- 243° maximum opening range for rear cargo doors
- Six cup holders and three bottle holders
- 12 rear passenger heating and cooling vents
- Dual overhead front passenger map lights
- Side and rear window privacy glass
- AM/FM audio system with four speakers
- 7" color touch-screen display
- USB connection<sup>20</sup>
- RearView Monitor<sup>14</sup>
- Bluetooth® Hands-free Phone System<sup>11</sup>
- Streaming Audio via Bluetooth®<sup>11</sup>
- Hands-free Text Messaging Assistant<sup>13</sup>
- Three assist grips
- Driver's under-seat storage tray
- Pre-wiring for electrical and telematics upfitting
- Eight standard air bags<sup>21</sup>
- Vehicle Dynamic Control (VDC)<sup>22</sup>



### NV3500 HD SV INCLUDES NV3500 HD S EQUIPMENT PLUS:

- 17" Chrome-clad wheels
- Rear Sonar System<sup>23</sup>
- Chrome grille, bumpers and outside mirrors
- Dual power outside mirrors
- Multi-functional lockable center console
- Driver's seat storage pocket
- Six rear passenger area map lights
- Two additional cup holders (eight total)
- Carpeted flooring
- Two additional 12-volt DC power outlets<sup>20</sup>
- Two 120-volt AC power outlets rated at 400 watts<sup>7</sup>
- Entry lighting for driver and front passenger
- 8-way power driver's seat with manual lumbar support
- AM/FM/CD audio system with six speakers
- NissanConnect® 5.8" color touch-screen display<sup>11</sup>
- Nissan Navigation System<sup>12</sup>
- Nissan Mobile Partner<sup>11</sup>
- Voice Recognition<sup>12</sup>
- SiriusXM® Traffic and Travel Link with 3-month trial access<sup>11</sup>
- SiriusXM® Radio with 3-month subscription included<sup>11</sup>
- Steering wheel-mounted audio controls
- Vehicle Security System
- Nissan Vehicle Immobilizer System



### NV3500 HD SL INCLUDES NV3500 HD SV EQUIPMENT PLUS:

- 5.6-liter DOHC V8 engine
- 7-speed automatic transmission with tow mode
- Fog lights
- Chrome door handles
- Front Sonar System<sup>23</sup>
- Leather-appointed seats
- Heated front seats
- Leather-wrapped steering wheel
- Dual Zone Automatic Temperature Control
- HVAC microfilter
- Auto-dimming rearview mirror with compass
- Dual-zone air conditioning
- Power heated chrome manually extendable tow mirrors
- Two front tow hooks
- Class IV tow hitch receiver<sup>19</sup>
- 7-pin connector/brake controller pre-wiring<sup>19</sup>
- HD Battery



## DIMENSIONS/CAPACITIES

Exterior Dimensions - Inches	
Wheelbase	146.1
Overall length	240.6
Overall width (without mirrors)	79.9
Overall width (with mirrors)	99.5
Overall width (with tow mirrors)	102.8
Overall width (with tow mirrors extended)	108.6
Overall height	84.0
Track width (front)	68.7
Track width (rear)	68.9
Sliding side door width	41.7
Rear door opening width	61.6
Rear door opening height	49.8
Step-in height (front)	18.0
Step-in height (sliding side door)	19.4
Step-in height (rear)	19.9
Cargo area liftover height	27.7
Angle of approach (degrees)	17.8°
Angle of departure (degrees)	16.7°
Turning diameter (ft.)	45.2

Interior Dimensions - Inches	1st/2nd rows	3rd/4th rows
Head room	42.8/39.6	39.8/39.6
Leg room	42.0/33.9	38.5/37.4
Hip room	60.6/70.4	67.2/68.6
Shoulder room	65.7/69.2	66.6/68.1

Cargo Dimensions - Inches <sup>8</sup>	
EPA interior passenger volume (cu. ft.)	238.1
Total interior volume (cu. ft.)	267.0
Cargo volume (cu. ft.)	218.9
Floor behind front row (cu. ft.)	217.7
Floor behind second row (cu. ft.)	151.6
Floor behind third row (cu. ft.)	89.4
Floor behind fourth row (cu. ft.)	28.9
Maximum cargo length behind center console at vehicle center, passenger seats removed	121.9
Maximum cargo length without center console at vehicle center, passenger seats removed	150.4
Maximum cargo length behind front row, passenger seats removed	120.6
Maximum cargo length behind second row, third and fourth rows removed	86.1
Maximum cargo length behind third row, fourth row removed	51.7
Maximum cargo length behind fourth row	18.9
Maximum cargo width	64.4
Cargo width at wheelhouse floor	52.1
Maximum cargo height	51.3

Capacities		
Roof load capacity (lbs.) <sup>8</sup>	500	
Seating capacity	12	
Fuel tank (gals.)	28.0	
Engine oil (qts.)	5.4 (V6)	6.5 (V8)

Maximum Payload - Lbs.			
	<b>3500 S</b>	<b>3500 SV</b>	<b>3500 SL</b>
V6	2,800	2,730	-
V8	-	-	2,500

Maximum Towing - Lbs.	
With standard bumper towing	2,000 <sup>19</sup>
With tow hitch receiver (V6)	6,200 <sup>24</sup>
With tow hitch receiver (V8)	8,700 <sup>19</sup>

GVWR - Lbs.			
	<b>3500 S</b>	<b>3500 SV</b>	<b>3500 SL</b>
V6	9,520	9,520	-
V8	-	-	9,480

Curb Weights - Lbs.			
V6	6,713	6,784	-
V8	-	-	6,980

## SPECIFICATIONS

Engines	NV3500 <sup>®</sup> S	NV3500 <sup>®</sup> SV	NV3500 <sup>®</sup> SL
4.0-liter DOHC 24-valve V6 engine	■	■	
— Horsepower – 261 hp @ 5,600 rpm			
— Torque – 281 lb-ft @ 4,000 rpm			
Endurance 5.6-liter DOHC 32-valve V8 engine			■
— Horsepower – 375 hp @ 5,200 rpm			
— Torque – 387 lb-ft @ 3,400 rpm			
Emissions – 50-state emissions	■	■	■
Continuously Variable Valve Timing Control System (CVTCS)	■	■	■
Nissan Direct Ignition System	■	■	■
Electronic drive-by-wire throttle	■	■	■
Alternator (130 amps)	■	■	■
Iridium-tipped spark plugs	■	■	■
Heavy-duty battery			■

Drivetrain			
Rear-Wheel Drive	■	■	■
5-speed automatic transmission	■	■	
7-speed automatic transmission			■
Final gear ratio – 3.36:1	■	■	■

Brakes			
14.2" Front vented disc brakes	■	■	■
14.4" Rear vented disc brakes	■	■	■
4-wheel Anti-lock Braking System (ABS)	■	■	■
Electronic Brake force Distribution (EBD)	■	■	■
Brake Assist <sup>25</sup>	■	■	■

Driver Assistance Technologies			
Cruise Control	■	■	■
RearView Monitor <sup>14</sup>	■	■	■
Front Sonar System <sup>23</sup>			■
Rear Sonar System <sup>23</sup>		■	■
Vehicle Dynamic Control (VDC) <sup>22</sup> with Traction Control System (TCS)	■	■	■
2-wheel Active Brake Limited Slip (ABLS)	■	■	■

Suspension/Steering			
Front independent double-wishbone suspension	■	■	■
Multi-leaf rear suspension with solid axle	■	■	■
Front and rear stabilizer bars	■	■	■
Engine-speed-sensitive hydraulic recirculating ball steering	■	■	■
Full-length, fully boxed ladder frame	■	■	■

Wheels/Tires			
17" x 7.5" steel wheels	■		
17" x 7.5" chrome-clad wheels		■	■
LT245/70R17 all-season tires	■	■	■
Full-size spare tire	■	■	■

Exterior Features	NV3500 <sup>®</sup> S	NV3500 <sup>®</sup> SV	NV3500 <sup>®</sup> SL
Black grille	■		
Black door handles and outside mirrors	■		
Black bumpers	■		
Chrome grille		■	■
Chrome outside mirrors		■	■
Chrome bumpers		■	■
Dual power outside mirrors		■	■
Chrome door handles			■
Power heated chrome manually extendable tow mirrors			■
Ten roof rack-mounting points <sup>8</sup>	■	■	■
50/50-split rear cargo doors with opening locking feature	■	■	■
Magnetic door locks (to secure open rear doors)	■	■	■
243° Maximum opening range for rear cargo doors	■	■	■
Sliding side door on passenger side	■	■	■
Sliding side door window with privacy glass	■	■	■
UV-reducing front windshield glass	■	■	■
Rear window defroster	■	■	■
Daytime Running Lights	■	■	■
Halogen headlights	■	■	■
Fog lights			■
Two front tow hooks			■
Side passenger window privacy glass	■	■	■
Rear window privacy glass	■	■	■
7-pin connector and brake controller pre-wiring <sup>19</sup>			■
Class IV tow hitch receiver <sup>19</sup>			■

Comfort/Convenience			
Air conditioning	■	■	
Dual-zone Automatic Temperature Control front air conditioning			■
HVAC Microfilter			■
12 Rear passenger heating and cooling vents	■	■	■
Pre-wiring for electrical and telematics upfitting	■	■	■
Dual overhead front passenger map lights	■	■	■
Six rear passenger area map lights		■	■
Rear cargo light	■	■	■
Vertical sidewall design	■	■	■
Interior rearview mirror	■	■	
Auto-dimming rearview mirror with compass			■
Three assist grips	■	■	■
Remote keyless entry	■	■	■
Power windows with driver's window one-touch auto-down	■	■	■
Power door locks with auto-locking feature	■	■	■
Tilt steering column	■	■	■
Variable intermittent windshield wipers	■	■	■
Entry lighting for driver and front passenger		■	■
Multi-functional trip computer with maintenance intervals	■	■	■

Comfort/Convenience (continued)	NV3500 <sup>®</sup> S	NV3500 <sup>®</sup> SV	NV3500 <sup>®</sup> SL
Multi-functional lockable center console with file and laptop computer storage with built-in clipboard holder		■	■
Driver's under-seat slide-out storage tray	■	■	■
Front-door map pockets	■	■	■
Six cup holders	■		
Eight cup holders		■	■
Three bottle holders	■	■	■
12-volt DC power outlet <sup>20</sup>	■		
Three 12-volt DC power outlets <sup>20</sup>		■	■
Two 120-volt power outlets <sup>7</sup>		■	■

Seating/Appointments			
12-passenger seating capacity	■	■	■
324 Seating configurations	■	■	■
Gray cloth front seats with reinforced side bolster wear patches on inner and outer bolsters	■	■	
Leather-appointed seats			■
Heated front seats			■
Leather-wrapped steering wheel			■
Water-repellent seating surfaces	■	■	
4-way manual driver's seat	■		
8-way power adjustable driver's seat with manual lumbar		■	■
Driver's seat storage pocket		■	■
4-way manual front-passenger's seat	■	■	■
Fold-down front-passenger's seat with seatback tray table	■	■	■
Removable split seating (65/35 for 2nd and 3rd rows, 50/50 for 4th row)	■	■	■

Infotainment			
7" color touch-screen display	■		
NissanConnect <sup>®</sup> 5.8" color touch-screen display <sup>11</sup>		■	■
Nissan Navigation System <sup>12</sup>		■	■
Nissan Mobile Partner <sup>11</sup>		■	■
Voice Recognition <sup>12</sup>		■	■
SiriusXM <sup>®</sup> Traffic and Travel Link with 3-month trial access <sup>11</sup>		■	■
Bluetooth <sup>®</sup> Hands-free Phone System <sup>11</sup>	■	■	■
Hands-free Text Messaging Assistant <sup>13</sup>	■	■	■
AM/FM audio system with four speakers	■		
AM/FM/CD audio system with six speakers		■	■
Radio Data System (RDS)	■	■	■
Auxiliary audio input jack <sup>20</sup>	■	■	■
USB port <sup>20</sup>	■	■	■
SiriusXM <sup>®</sup> Radio with 3-month subscription included <sup>11</sup>		■	■
Streaming Audio via Bluetooth <sup>®</sup> <sup>11</sup>	■	■	■
Steering wheel-mounted audio controls	■	■	■

Safety	NV3500 <sup>®</sup> S	NV3500 <sup>®</sup> SV	NV3500 <sup>®</sup> SL
Driver and front passenger dual-stage supplemental front air bags <sup>21</sup>	■	■	■
Driver's and front-passenger's seat-mounted side-impact supplemental air bags <sup>21</sup>	■	■	■
Roof-mounted curtain side-impact supplemental air bags with rollover sensor for rollover head protection for all outboard passengers <sup>21</sup>	■	■	■
3-point ALR/ELR passenger seat belt system (ELR for driver)	■	■	■
Front seat belts with pretensioners and load limiters	■	■	■
LATCH System (Lower Anchors and Tethers for CHildren)	■	■	■
Five rear seating area tether anchors	■	■	■
Zone Body construction with front and rear crumple zones	■	■	■
Energy-absorbing steering column	■	■	■
Pipe-style steel side-door guard beams	■	■	■
Steering wheel lock	■	■	■
Break-away engine mounts	■	■	■
Slide-away brake pedal assembly	■	■	■
Tire Pressure Monitoring System (TPMS) <sup>26</sup>	■	■	■

Security			
Vehicle Security System		■	■
Nissan Vehicle Immobilizer System		■	■

## NISSAN ROADSIDE ASSISTANCE

Your peace of mind is on us. For five years or 100,000 miles, your new Nissan vehicle is covered for the following:<sup>15</sup>

- Flat-tire changes
- Trip Interruption benefits
- Vehicle lockouts
- Emergency fuel delivery
- Jump starts

Follow Nissan on:



visit [NissanUSA.com](http://NissanUSA.com)



Nissan Intelligent Mobility moves you one step ahead. In cars that feel like an extension of you, helping you see more and sense more, reacting with you, and sometimes even for you. Nissan Intelligent Mobility is about a better future – moving through life with greater confidence, excitement and connection to the world around you.

<sup>1</sup>Ward's Light Vehicle Segmentation. 2021 NV Passenger vs. latest in-market competitors in Ward's Large Van segment. 12-seat passenger vans compared. Based on manufacturer's websites. <sup>2</sup>Claim based on years/mileage (whichever occurs first) covered under the New Vehicle Limited Warranty basic coverage. Ward's Light Vehicle Segmentation: 2021 Nissan NV Cargo, NV Passenger v. in-market Large Van Class; 2021 Nissan NV200® v. in-market Small Van Class. Commercial Vans compared only. Nissan's New Vehicle Limited Warranty basic coverage excludes tires, corrosion coverage and federal and California emission performance and defect coverage. Other terms and conditions apply. See dealer for complete warranty details. NV200® Taxi is covered under a separate limited warranty with a different level of coverage. <sup>3</sup>2021 Nissan NV® Passenger SL shown with standard factory tow hitch. See Nissan Towing Guide and Owner's Manual for additional information. <sup>4</sup>Ward's Light Vehicle Segmentation. Available feature. 2021 NV3500 Passenger SV vs. latest in-market competitors in Ward's Large Van segment. Based on manufacturer's websites. <sup>5</sup>Ward's Light Vehicle Segmentation. 2021 NV Passenger vs. latest in-market competitors in Ward's Large Van segment. Based on manufacturer's websites. <sup>6</sup>Available feature. <sup>7</sup>120-volt power outlet is intended only for use with compatible items. Please check specifications of wattage and amperage of items to be plugged in to determine compatibility. <sup>8</sup>Cargo and load capacity limited by weight and distribution. Always secure cargo. Heavy loading of the vehicle with cargo, especially on the roof, will affect the handling and stability of the vehicle. <sup>9</sup>Vehicle(s) shown equipped with third-party accessories. <sup>10</sup>Owner receives a commercial upfit package designed, manufactured, tested and installed by an independent upfit supplier. All participating upfit suppliers must be National Truck Equipment Association members. Parts supplied by upfit suppliers and any damage or failures caused by installation or use of upfit parts are not covered by the Nissan New Vehicle Limited Warranty. Owner should review the upfit supplier's warranty. **Nissan is not responsible for the safety or quality of the parts or modifications made by the upfit supplier.** The Nissan Commercial Incentive Program is only available to valid business entities. Program not available to retail consumers. Certain model restrictions apply. See dealer for complete details and restrictions. <sup>11</sup>Available feature shown. Use feature only when safe and legal. Compatible device and service required. Subject to third party service availability. For more information see [NissanUSA.com/connect/legal](https://www.nissanusa.com/connect/legal). <sup>12</sup>Never program while driving. GPS mapping may not be detailed in all areas or reflect current road status. <sup>13</sup>Use the text messaging feature after stopping your vehicle in a safe location. If you have to use the feature while driving, exercise extreme caution at all times so full attention may be given to vehicle operation. Compatible smartphone required. Text rates and/or data usage may apply. <sup>14</sup>RearView Monitor may not detect every object and does not eliminate blind spots or warn of moving objects. See Owner's Manual for safety information. <sup>15</sup>For a period of 5 years/100,000 miles from the date the vehicle is delivered to the first retail buyer or otherwise put into use, whichever is earlier. <sup>16</sup>Extra cost option. <sup>17</sup>Leather appointments. <sup>18</sup>Genuine Nissan Accessories are covered by Nissan's Limited Warranty on Genuine Nissan Replacement Parts, Genuine NISMO® S-Tune Parts, and Genuine Nissan Accessories for the longer of 12 months/12,000 miles (whichever occurs first) or the remaining period under the 5-year/100,000-mile (whichever occurs first) Nissan New Vehicle Limited Warranty. Terms and conditions apply. See Warranty Information Booklet for details. <sup>19</sup>With standard factory tow hitch. See Nissan Towing Guide and Owner's Manual for additional information. <sup>20</sup>Driving is serious business and requires your full attention. If you have to use the connected device while driving, exercise extreme caution at all times so full attention may be given to vehicle operation. <sup>21</sup>Air bags are only a supplemental restraint system. Always wear your seat belt. Rear-facing child restraints should not be placed in the front-passenger's seat. All children 12 and under should ride in the rear seat properly secured in child restraints, booster seats, or seat belts according to their size. Air bags will only inflate in certain accidents. See Owner's Manual for safety information. <sup>22</sup>Vehicle Dynamic Control cannot prevent collisions due to abrupt steering, carelessness, or dangerous driving techniques. It should remain on when driving, except when freeing the vehicle from mud or snow. See Owner's Manual for safety information. <sup>23</sup>Sonar System may not detect every object. Driver should always check surroundings before driving. See Owner's Manual for safety information. <sup>24</sup>With available tow hitch accessory for V6 models. See Nissan Towing Guide and Owner's Manual for additional information. <sup>25</sup>Brake Assist cannot prevent all collisions and may not provide warning or braking in all conditions. Driver should monitor traffic conditions and brake as needed to prevent collisions. See Owner's Manual for safety information. <sup>26</sup>Tire Pressure Monitoring System is not a substitute for regular tire pressure checks. See Owner's Manual for safety information. Bluetooth® word mark and logos are owned by Bluetooth SIG, Inc., and any use of such marks by Nissan is under license. Facebook® is a registered trademark of Facebook, Inc. The Sirius®, XM®, and SiriusXM® names and all related marks and logos are trademarks of SiriusXM Radio Inc. Twitter® is a registered trademark of Twitter, Inc. YouTube® is a registered trademark of Google LLC. This brochure is intended for general descriptive and informational purposes only. It is subject to change and does not constitute an offer, representation or warranty (express or implied) by Nissan North America, Inc. Interested parties should confirm the accuracy of any information in this brochure as it relates to a vehicle directly with Nissan North America, Inc. before relying on it to make a purchase decision. Nissan North America, Inc. reserves the right to make changes, at any time, without prior notice, in prices, colors, materials, equipment, specifications, and models and to discontinue models or equipment. Due to continuous product development and other pre- and post-production factors, actual vehicle, materials and specifications may vary from this brochure. Some vehicles shown with optional equipment. See the actual vehicle for complete accuracy. Availability and delivery times for particular models or equipment may vary. Specifications, options and accessories may differ in Hawaii, U.S. territories and other countries. For additional information on availability, options or accessories, see your Nissan dealer or contact Nissan North America, Inc. At [NissanUSA.com](https://www.nissanusa.com), you'll find virtual product demonstrations, a way to "build your own Nissan," a dealer locator, and more information about key Nissan support services. Or if you'd prefer, call **1-800-NISSAN-3** for answers to specific questions about NV® Passenger or any other Nissan vehicle. The Nissan names, logos, product names, feature names, and slogans are trademarks owned by or licensed to Nissan Motor Co. Ltd. and/or its North American subsidiaries. Other trademarks and trade names are those of their respective owners. **Always wear your seat belt, and please drive responsibly.** ©2020 Nissan North America, Inc. <sup>21</sup> NV® Passenger. 2103249-LCV-10/20.