

SILVERADO HD 2021

CHEVROLET



2500 HD Crew Cab Standard Bed LTZ 4x4
in Northsky Blue Metallic with available
Duramax 6.6L Turbo-Diesel V8 engine,
additional available features and
dealer-installed 4-inch chrome assist
steps from Chevrolet Accessories³



THE STRONGEST, MOST CAPABLE SILVERADO HD EVER.

That headline isn't just words on a page. It's something the 2021 Chevrolet Silverado HD has earned. Purpose-built to handle your biggest jobs, with strength and bold style to spare. Powertrain options that finish every workday, then ask for overtime. The ability to pull up to 36,000 lbs¹ (18,500 lbs. as shown) or carry up to 7,442 lbs² of payload, with advanced trailering technologies designed to make a long day of towing easy. Not to mention the hardworking, highly functional Durabed. The bottom line: Silverado HD defines capability.

FIND NEW ROADS[™]

¹ Requires Silverado 3500 HD Regular Cab WT 2WD DRW with available Duramax 6.6L Turbo-Diesel V8 engine, Max Trailering Package and gooseneck hitch. Before you buy a vehicle or use it for trailering, carefully review the Trailering section of the Owner's Manual. The weight of passengers, cargo and options or accessories may reduce the amount you can tow. ² Requires Silverado 3500 HD Regular Cab Long Bed 2WD DRW. For comparison purposes only. See the Owner's Manual and the label on the vehicle door jamb for the carrying capacity of a specific vehicle. ³ Chevrolet Accessories are dealer-installed and covered by the GM 3-year/36,000-mile (whichever comes first) New Vehicle Limited Warranty when ordered with your new Silverado. See your dealer for details.

MODELS

See pages 37–41 of this PDF for additional information on these Silverado HD pickups, including the most popular equipped models.

WT

Pick a job. Any job.

With two engine choices, an automatic locking rear differential and 12 cargo tie-downs, Silverado HD Work Truck is always ready to get started. And with standard vertical trairling mirrors, a Rear Vision Camera¹ and Hitch Guidance,² a platform hitch and 7-pin connector, and lowered bed walls for easier fifth-wheel towing, you're always ready to finish whatever job you started.



CUSTOM

Hardworking. Good-looking.

Silverado Custom features a body-color grille bar, high-gloss Black bumpers, LED signature taillamps and 20-inch machined-aluminum wheels with all-terrain tires, plus power-adjustable vertical trairling mirrors with heated upper glass and integrated turn signal indicators.



¹ Read the vehicle Owner's Manual for important feature limitations and information.

MODELS

See pages 42–47 of this PDF for additional information on these Silverado HD pickups, including the most popular equipped models.

LT

Classic appeal. Complete capability.

The chrome bumpers and center grille bar complement the machined-aluminum wheels and body-color door handles. A power lock and release EZ Lift tailgate and integrated trailer brake controller are standard. Inside, you'll find an 8-inch diagonal color touch-screen display and the convenience of an available 4G LTE Wi-Fi® Hotspot¹

LTZ

This is where premium style combines with hardworking substance.

A prominent chrome grille bar, chrome mirror caps, chrome door handles, and chrome-accented grille inserts are paired with LED headlamps, taillamps, daytime running lamps and fog lamps.

The Advanced Trailering System is standard, as are power-extending and power-folding mirrors, an Autotrac® 2-speed transfer case (4x4 models), dual-zone automatic climate control, Keyless Open and Start, and leather-appointed front seating with 10-way power adjusters for driver and outboard passenger.



Vehicle shown with available features and Chevrolet Accessories.²



Vehicle shown with available features and Chevrolet Accessories.²

¹ Service varies with conditions and location. Requires active service and paid AT&T data plan. Visit onstar.com for details and limitations. Availability subject to change. ² Chevrolet Accessories are dealer-installed and covered by the GM 3-year/36,000-mile (whichever comes first) New Vehicle Limited Warranty when ordered with your new Silverado. See your dealer for details.

MODELS

See pages 48–49 of this PDF for additional information on Silverado HD High Country, including the most popular equipped model.

HIGH COUNTRY

This may be the perfect combination of luxury and capability, with more standard features than you'll find on any other Silverado HD.

The chrome and bronze grille features the iconic Chevrolet bowtie emblem front and center. Chrome assist steps, 20-inch polished-aluminum wheels (single rear wheel models), a power-up/-down tailgate, LED cargo area lighting, a Chevytec spray-on bedliner and several advanced safety features are all standard.

Inside, heated and ventilated front bucket seats with perforated leather seating surfaces, heated rear outboard seats and a Bose sound system provide the comforts of home. A Chevrolet Infotainment 3 Premium system¹ with Navigation² and an 8-inch diagonal Driver Information Center display bring the technology to another level. Plus, High Country offers 8 cameras that give you up to 15 unique views³ that come in handy when you need to get hitched up, back up, or just maneuver the road around you.



Vehicle shown with available features.

¹ Chevrolet Infotainment System functionality varies by model. Full functionality requires compatible Bluetooth and smartphone, and USB connectivity for some devices. ² Map coverage available in the United States, Puerto Rico and Canada. ³ Some camera views require available accessory camera and installation. Not compatible with all trailers. Customers can see their dealer for full details. Read the vehicle Owner's Manual for important feature limitations and information.

SPECIAL EDITIONS

MIDNIGHT

Who's afraid of the dark?

Not Silverado HD with the Midnight Edition. That's because its Black exterior is complemented by darkness all around: Black front grille bar and inserts, front skid plate, mirror caps, hood vent surround, door handles and bumpers. Add in high-gloss Black aluminum wheels and mud-terrain tires for a truck that's ready for the night to fall. Available on LT and LTZ!



Vehicle shown with available features and Chevrolet Accessories.³

Z71 SPORT

Some trucks are always ready to go outside and play.

Z71 Sport Edition gets in the game with a body-color front grille bar and bumpers. It keeps the ball rolling with Black grille inserts, front skid plate, badging and hood vent surround, plus high-gloss Black mirror caps, door handles and aluminum wheels and mud-terrain tires. That's a winner. Available on LT and LTZ.^{1,2}



Vehicle shown with available features.

¹ Requires Crew Cab and SRW on 3500 HD. ² Available with Summit White, Red Hot or Northsky Blue Metallic exterior colors. ³ Chevrolet Accessories are dealer-installed and covered by the GM 3-year/36,000-mile (whichever comes first) New Vehicle Limited Warranty when ordered with your new Silverado. See your dealer for details.

SPECIAL EDITIONS

Z71 CHROME SPORT

A polished appearance from a proven performer.

Z71 Chrome Sport Edition has a highlight reel that includes a chrome hood vent surround, front skid plate, door handles, badging and mirror caps. A body-color center bar and Black mesh grille with chrome accents add to the appeal, as do 20-inch polished-aluminum wheels. It's a complete look that's tough to beat. Available on LT and LTZ.^{1,2}



Vehicle shown with available features and Chevrolet Accessories.⁴

CARHARTT

What happens when two of the hardest workers in the world unite? Silverado HD Carhartt® Edition.

There's no mistaking the Carhartt influence, with signature badging, an embossed soft tonneau cover and Carhartt pinstriping outside, plus 20-inch machined-aluminum wheels with Grazen Metallic-painted accents. Step inside to experience a first-of-its-kind interior, where Carhartt-color trim, stitching, and front and rear perforated leather seating surfaces are found, along with embroidered front-seat head restraints and embossed all-weather floor liners. Now you're geared up to go the distance. Available on LTZ.³



Vehicle shown with available features and Chevrolet Accessories.⁴

¹ Requires Crew Cab and SRW on 3500 HD. ² Available with Summit White or Black exterior colors. ³ Requires 2500 HD Crew Cab with Mosaic Black Metallic exterior color. ⁴ Chevrolet Accessories are dealer-installed and covered by the GM 3-year/36,000-mile (whichever comes first) New Vehicle Limited Warranty when ordered with your new Silverado. See your dealer for details.

POWERTRAIN

6.6L V8 GAS ENGINE WITH 6-SPEED TRANSMISSION

464 LB.-FT. OF TORQUE

401 HORSEPOWER

17,370 LBS. MAXIMUM
TRAILERING WEIGHT^{1, 2}

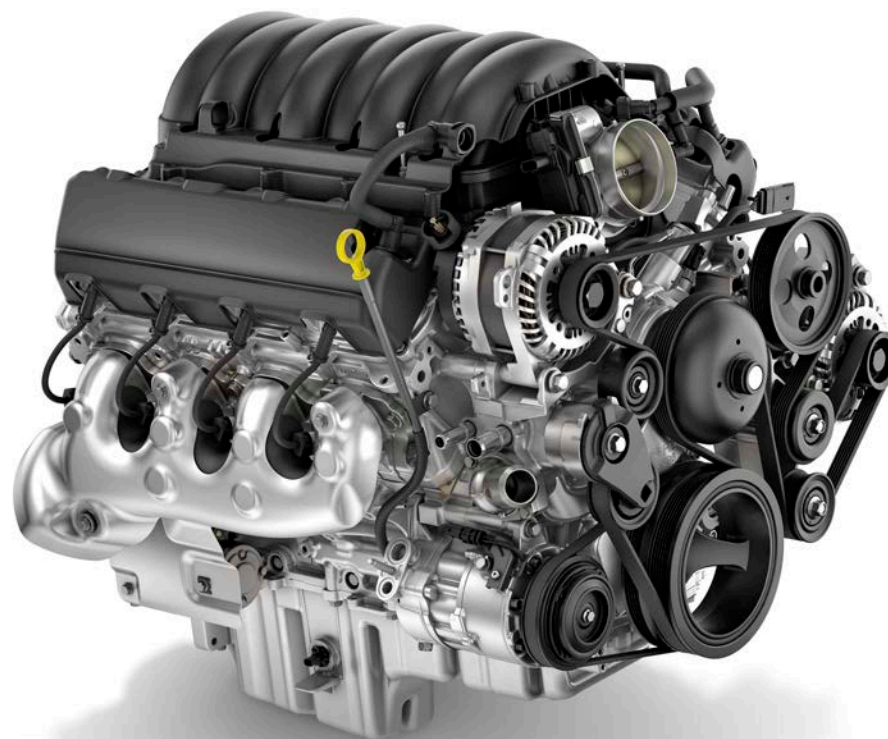


The hardworking **6.6L V8 gas engine** offers 464 lb.-ft. of torque. Direct Injection and Variable Valve Timing help make this powerplant both capable and efficient. And it's a durable performer, thanks to a cast iron cylinder block, deep-skirt design and cross-bolted main bearing caps.

Both gas and diesel engines feature an **air induction system** that receives cool air through the top opening of the grille. A functional hood scoop provides a second source to satisfy the intake needs of the Duramax® Diesel.

Dual alternators are available on Silverado HD with either engine, making it easy to power the accessories you need when you're on the job.

¹ Requires Silverado 2500 HD Regular Cab 2WD and available gooseneck or fifth-wheel hitch. ² Before you buy a vehicle or use it for trailering, carefully review the Trailering section of the Owner's Manual. The weight of passengers, cargo and options or accessories may reduce the amount you can tow.



POWERTRAIN

DURAMAX 6.6L TURBO-DIESEL V8 ENGINE WITH ALLISON 10-SPEED TRANSMISSION

910 LB.-FT. OF TORQUE

445 HORSEPOWER

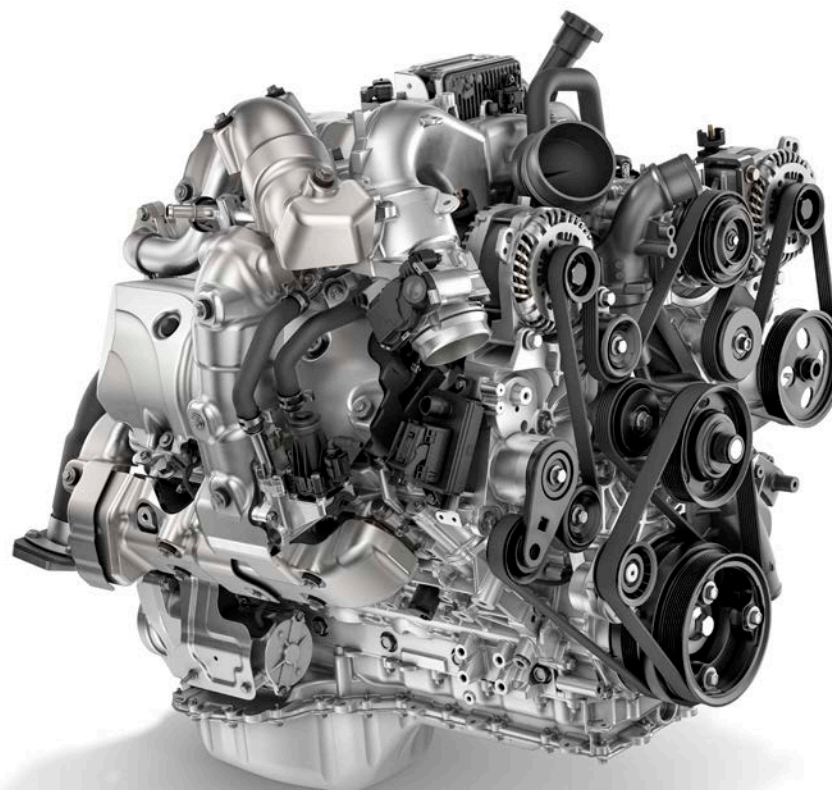
36,000 LBS. MAXIMUM
TRAILERING WEIGHT^{1, 2}

The available legendary **Duramax 6.6L Turbo-Diesel V8 engine** is paired with an Allison® 10-speed automatic transmission, which was engineered to deliver all 910 lb.-ft. of torque in first gear on 3500 HD models.

Diesel Engine After-Run is designed to help the engine cool down following heavy usage. If the vehicle is shut off while the engine is too hot, it will immediately restart, allowing the engine fan to run and coolant to flow.

An available chain-driven **Power Takeoff (PTO)** feature is offered straight from the factory on the Allison transmission, so you can transfer power from the engine to aftermarket equipment, such as a generator or hydraulic pump.³

¹ Requires Silverado 3500 HD Regular Cab WT 2WD DRW with available Max Trailering Package and gooseneck hitch. ² Before you buy a vehicle or use it for trailering, carefully review the Trailering section of the Owner's Manual. The weight of passengers, cargo and options or accessories may reduce the amount you can tow. ³ Equipment from independent suppliers is not covered by the GM New Vehicle Limited Warranty. GM is not responsible for the safety or quality of independent supplier alterations.



CORE STRENGTH.

Under the sheet metal is where Silverado HD truly excels.

Every element was designed to deliver our best heavy-duty truck ever. To make that happen, we used seven different types of steel, with each gauge chosen to maximize capability. That means we used the right material in the right place to help do the right job.

Everything about this truck has been optimized for durability and dependability to help ensure you're driving the strongest, most capable Silverado HD ever.



To create a strong structure that stands up to heavy-duty usage, we used a combination of **high-strength and ultra-high-strength steel** throughout the cab and frame.

Silverado HD features a **fully boxed ladder-type frame** with nine high-strength steel cross members, making it strong and stiff to deliver a more confident towing experience and maximize load-hauling capability.

Heavy-duty capability requires enhanced cooling. On models with the available Duramax 6.6L Turbo-Diesel V8 engine, you'll find a massive **28-inch cooling fan** to meet the high cooling demands that come with pulling big loads.

The **integral front-end structure** provides notable advantages by reducing mass and improving ride and handling. It also helps manage noise and vibration and crash impact forces.

Every Silverado HD features **robust axles** to handle heavy loads. In fact, the ring gear in the rear axle on 3500 HD models with the available Duramax 6.6L Turbo-Diesel V8 engine measures a full 12 inches to help deliver all 910 lb.-ft. of torque in first gear.

Large-diameter front and rear prop shafts and strong U-joints have been optimized to handle high torque output and improve durability.

The **Electric Parking Brake** introduces two major benefits: Steep Grade Apply, which engages on grades greater than 15% when the driver shifts into Park for additional brake support, and Park Grade Hold Assist, which enhances Hill Hold to help keep your truck firmly in place on inclines or declines of 8% or more. Both features keep the transmission linkage from binding so you can more easily shift into gear after being parked on a steep grade.

DRIVING DYNAMICS

2500 HD Crew Cab Standard Bed LTZ 4x4 in Cherry Red Tintcoat (extra-cost color) with available Duramax 6.6L Turbo-Diesel V8 engine, Z71 Off-Road Package, additional available features and dealer-installed 4-inch chrome assist steps from Chevrolet Accessories¹



¹ Chevrolet Accessories are dealer-installed and covered by the GM 3-year/36,000-mile (whichever comes first) New Vehicle Limited Warranty when ordered with your new Silverado. See your dealer for details.

An Autotrac 2-speed transfer case is available and offers four drive modes: 2 High, 4 High, 4 Low and a 4 Auto mode that automatically adjusts power sent to the front and rear axles for improved traction.

The long wheelbase, stiff frame and shear-style body mounts combine to help provide a **smooth ride** with more control. The short/long arm suspension offers a proven formula for the best possible ride and handling benefits.

Offering enhanced control on the highway and in the parking lot, **Digital Variable Steering Assist** helps provide stability at high speeds and maneuverability at low speeds. Standard on LTZ and High Country.

Extended-Hold Hill Start Assist, which provides extra time to start uphill from a stop, is standard. There's also a Brake Pad Life Monitor and an Electric Parking Brake with Steep Grade Apply and Park Grade Hold Assist.

DRIVING DYNAMICS

2500 HD Crew Cab Standard Bed LTZ 4x4 in Cherry Red Tintcoat (extra-cost color) with available Duramax 6.6L Turbo-Diesel V8 engine, Z71 Off-Road Package, additional available features and dealer-installed 4-inch chrome assist steps from Chevrolet Accessories.¹

**READY FOR A ROAD TRIP.
OR A NO-ROAD TRIP.**



The available **Z71 Off-Road Package** provides legendary capability and includes all-terrain tires, an off-road-tuned suspension featuring twin-tube shocks, an underbody skid plate package and Hill Descent Control.

Hill Descent Control uses antilock braking to help provide a controlled descent on challenging terrain. When activated, the system works without the driver pressing the brake pedal. However, the driver must be ready to take over braking at any time.

Silverado HD comes with a standard **automatic locking rear differential**, which reacts in milliseconds to low traction situations, providing equal power to both rear wheels for improved traction on challenging terrain.

¹ Chevrolet Accessories are dealer-installed and covered by the GM 3-year/36,000-mile (whichever comes first) New Vehicle Limited Warranty when ordered with your new Silverado. See your dealer for details.

JOBSITE READY

2500 HD Crew Cab Standard Bed Custom 4x4 in Silver Ice Metallic with available features, dealer-installed 4-inch Black round assist steps from Chevrolet Accessories² and snow plow upfit from an independent supplier¹



YOUR ALL DAY, EVERY DAY WORKER.

From the day it leaves the factory, Silverado HD is ready to get after it, with powerful engines, a fully boxed frame and **high-strength steel** in all the right places. But there's so much more.

An available chain-driven **Power Takeoff (PTO)** feature is offered with the available Duramax 6.6L Turbo-Diesel V8 and Allison[®] transmission so you can transfer power from the engine to another piece of equipment, such as a generator, pump or salt spreader¹

Vertical trailering mirrors are standard on all trims. A power extension feature and perimeter lighting are available on LTZ and High Country.

Snow plow installation is intuitive and easy, with a removable skid plate and front air dam that eliminate the need to drill holes in the bumper¹

A weather-resistant **engine block heater outlet** in the lower front fascia provides convenience and can save time when connecting, even with a plow installed. And it looks better too.

¹ Equipment from independent suppliers is not covered by the GM New Vehicle Limited Warranty. GM is not responsible for the safety or quality of independent supplier alterations. ² Chevrolet Accessories are dealer-installed and covered by the GM 3-year/36,000-mile (whichever comes first) New Vehicle Limited Warranty when ordered with your new Silverado. See your dealer for details.

HEAVY-DUTY TRAILERING

3500 HD Crew Cab Long Bed LT 2WD DRW in Black with available Duramax 6.6L Turbo-Diesel V8 engine and additional available features, including Gooseneck/5th Wheel Package and 6-inch chrome assist steps.



CONFIDENT AND IN CONTROL.

Looking for big numbers? Silverado HD with the available Duramax 6.6L Turbo-Diesel V8 engine tows up to 36,000 lbs.^{1, 2}

Here's something else. Every Silverado HD Dually paired with the available Duramax 6.6L V8 can pull over 30,000 lbs.²

There's also tons of advanced towing tech to give you peace of mind when you're towing a heavy load. Because Silverado HD doesn't just provide capability – it delivers confidence every time you hitch up.

¹ Requires 3500 HD Regular Cab WT 2WD DRW with available Duramax 6.6L Turbo-Diesel V8 engine, Max Trailering Package and gooseneck hitch. ² Before you buy a vehicle or use it for trailering, carefully review the Trailering section of the Owner's Manual. The weight of passengers, cargo and options or accessories may reduce the amount you can tow.

TRAILERING FEATURES

< | Select Trailer Type

What type of trailer is this?



Boat



Cargo



Horse



Livestock



Travel



Utility



Flat

Save Profile

A COMPLETE TOWING TOOL KIT.

- The available Advanced Trailering System features an In-Vehicle App¹ that offers customized trailer profiles. New for 2021 is Jack-Knife Alert², which requires a compatible trailer and can warn of an impending jackknife event. Other available features include predeparture checklists, trailer lighting diagnostics, a Trailer Tire Pressure Monitoring System³ module, and the ability to create and sync trailer profiles with the myChevrolet Mobile App⁴
- Trailer Theft Alert, Electric Parking Brake hookup assist and Brake Gain Memory on the integrated trailer brake controller are available.
- Proven trailering technology includes standard features such as StabiliTrak[®] with Trailer Sway Control and Hill Start Assist, Tow/Haul mode and Auto Grade Braking.

¹ App functionality and features vary with vehicle equipment and trim level. Data connection may be required. Some features require active service plan and working electrical system. User terms and limitations apply. ² Some camera views require available accessory camera and installation. Not compatible with all trailers. Customers can see their dealer for full details. Read the vehicle Owner's Manual for important feature limitations and information. ³ Requires available Trailer Tire Pressure Monitor Sensors. ⁴ Available on select Apple and Android devices. Service availability, features and functionality vary by vehicle, vehicle equipment, trim level, device and the plan you are enrolled in. Some features may require a working electrical system. User terms apply. Device data connection required. Visit onstar.com for details and limitations.

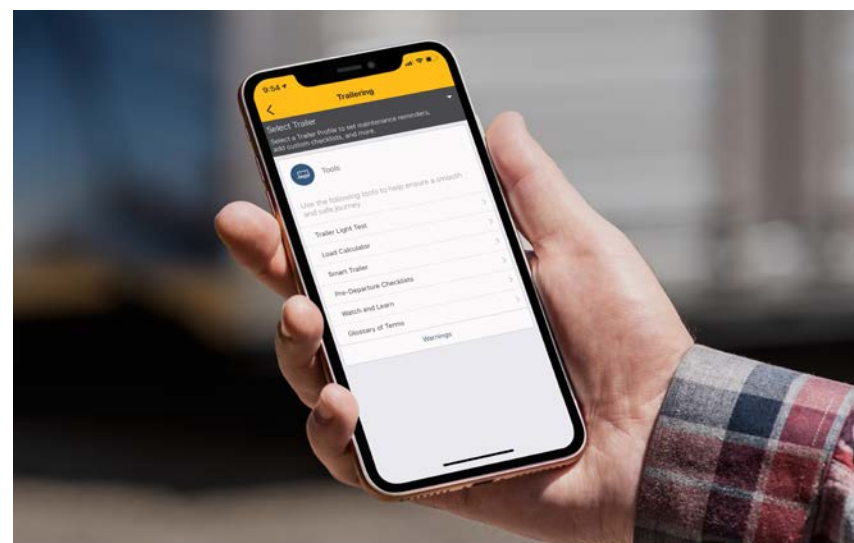
TRAILERING FEATURES

Available Trailer Tire Pressure Monitoring System
also checks tire temperature!¹

myChevrolet Mobile App with Trailing² syncs with the
available Advanced Trailing System.

Jack-Knife Alert warning³ (requires a compatible trailer),
standard on High Country and available on LTZ⁴

Fifth-Wheel Trailing Hitch available from Chevrolet Accessories⁵



¹ Requires available Trailer Tire Pressure Monitor Sensors. ² Available on select Apple and Android devices. Service availability, features and functionality vary by vehicle, vehicle equipment, trim level, device and the plan you are enrolled in. Some features may require a working electrical system. User terms apply. Device data connection required. Visit onstar.com for details and limitations. ³ Some camera views require available accessory camera and installation. Not compatible with all trailers. Customers can see their dealer for full details. Read the vehicle Owner's Manual for important feature limitations and information. ⁴ Requires available LTZ Convenience Package II. ⁵ Chevrolet Accessories are dealer-installed and covered by the GM 3-year/36,000-mile (whichever comes first) New Vehicle Limited Warranty when ordered with your new Silverado. See your dealer for details.

CAMERA TECHNOLOGIES

CAMERA VIEWS TO HELP YOU TOW WITH CONFIDENCE.

You know Silverado has the legendary power to handle heavy loads. But towing isn't about power alone. Silverado offers best-in-class camera technology, with 8 available cameras that give you up to 15 unique views. And new for 2021, Silverado offers additional dynamic trailering features like available Jack-Knife Alert,¹ Trailer Length Indicator¹ and Trailer Angle Indicator with Guidelines,¹ which require a compatible trailer, as well as Bed View with Cargo Bed Zoom and Bed Hitch Guidance — all designed to help make your towing job easier from start to finish. From hitching to driving to parking, these features can help improve your ability to move your loads.

Safety or driver assistance features are no substitute for the driver's responsibility to operate the vehicle in a safe manner. The driver should remain attentive to traffic, surroundings and road conditions at all times. Visibility, weather and road conditions may affect feature performance. Read the vehicle Owner's Manual for more important feature limitations and information. Some camera views require available accessory camera and installation. Not compatible with all trailers. See your dealer for details.

¹ Requires available Chevrolet Accessory Camera and installation. Not compatible with all trailers. Customers can see their dealer for full details.



Rear Side View (Turn Signal Activated) With a compatible trailer attached and a turn signal activated, this view will show a full screen down the side of the truck along with a Trailer Length Indicator¹ to aid in lane-change maneuvers by visually showing obstructions with the trailer in adjacent lanes.



Transparent Trailer View¹ Allows the driver to virtually “see through” a compatible trailer.



Front Side View Shows the position of the front tires when parking and during tight maneuvers.



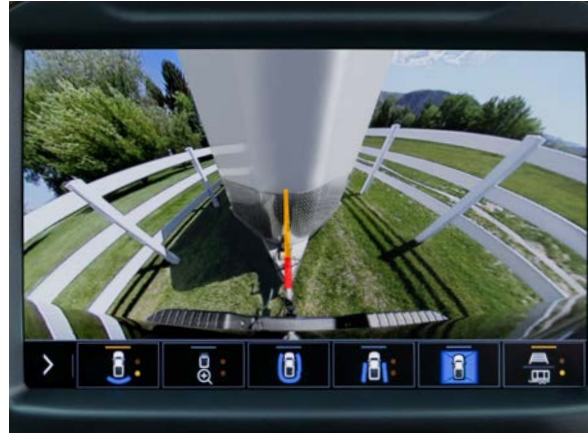
Rear Side View Provides a line of sight down each side of the truck and trailer via a split screen. This view is now available while in Drive or Reverse and includes a turn signal-activated biasing view and a Trailer Length Indicator¹

CAMERA TECHNOLOGIES

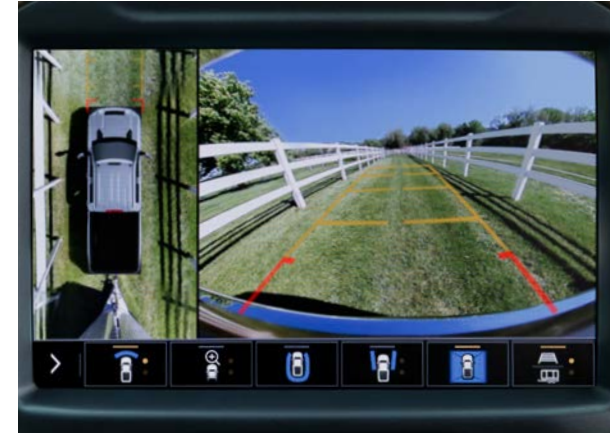
Safety or driver assistance features are no substitute for the driver's responsibility to operate the vehicle in a safe manner. The driver should remain attentive to traffic, surroundings and road conditions at all times. Visibility, weather and road conditions may affect feature performance. Read the vehicle Owner's Manual for more important feature limitations and information. Some camera views require available accessory camera and installation. Not compatible with all trailers. See your dealer for details.



Front Camera View Displays a view in front of the truck with available guidelines to assist with parking and tight maneuvers.



Rear Camera View Displays a view behind the truck with available guidelines to assist with parking and tight maneuvers or to hitch a trailer.



Surround View Gives a top-down bird's-eye view of the truck's surroundings.



Front Top-Down View Provides a top-down view of the hood, bumper and front tires for tight maneuvers in parking lots or along curbs. Includes guidelines that can be turned on or off as necessary.



Rear Top-Down View Shows the clearance between the truck bed and nearby objects.



Bowl View Provides a rear-facing 3-D surround view, useful for low-speed backing maneuvers.

CAMERA TECHNOLOGIES

Safety or driver assistance features are no substitute for the driver's responsibility to operate the vehicle in a safe manner. The driver should remain attentive to traffic, surroundings and road conditions at all times. Visibility, weather and road conditions may affect feature performance. Read the vehicle Owner's Manual for more important feature limitations and information. Some camera views require available accessory camera and installation. Not compatible with all trailers. See your dealer for details.

¹ Requires available Chevrolet Accessory Camera and installation. Customers can see their dealer for full details. ² Requires available Chevrolet Accessory Camera and installation. Not compatible with all trailers. Customers can see their dealer for full details.



Hitch View Provides a close-up view of the receiver hitch to help with alignment when connecting to a trailer.



Inside Trailer View¹ Allows the driver to monitor trailer contents or cargo using an available Chevrolet Accessory Camera that can be installed in the trailer.



Pic-In-Pic Side View¹ Combines two views — the Rear Side View and the Rear Trailer View. Requires available Chevrolet Accessory Camera.



Bed View Allows you to see the cargo bed to help with fifth-wheel or gooseneck hitching or to briefly check on cargo. Cargo Bed Zoom and Bed Hitch Guidance are new additions for the 2021 model year.



Rear Trailer View¹ Uses an available accessory camera to show objects behind a compatible trailer. Trailer Angle Indicator² with Trailer Guidelines² shows your current path. A second set of guidelines shows where the trailer will go based on steering inputs.



Rear Camera Mirror An available dual-function camera-based rearview mirror that provides a wider, less-obstructed field of view than a traditional rearview mirror.



DURABED

THIS BED NEVER RESTS.

- The Standard Bed features 69.6 cu. ft.¹ of cargo volume, while the Long Bed offers 83.5 cu. ft.¹
- 12 standard tie-downs all rated to 500 lbs.² per corner in any direction. Nine removable accessory tie-downs available.
- Low bed floor height for an easy lift-in at the tailgate.
- Integrated BedSteps for easy access to the front of the bed, even with a fifth-wheel or gooseneck trailer hitched.
- Optimized cargo bed rail height to allow clearance for fifth-wheel and gooseneck trailers.

¹ Cargo and load capacity limited by weight and distribution. ² These maximum payload ratings are intended for comparison purposes only. Before you buy a vehicle or use it to haul people or cargo, carefully review the Vehicle Loading section of the Owner's Manual and check the carrying capacity of your specific vehicle on the label on the inside of the driver door jamb.

DURABED

Available LED cargo area lighting and perimeter lighting.

Power-up/-down tailgate standard on High Country and available on LT and LTZ.

Large CornerStep rear bumper.

Available household-type bed-mounted 120-volt outlet.



A detailed view of the interior of a Chevrolet Silverado HD Crew Cab High Country. The image shows the front and rear seats, which are upholstered in black leather with brown leather accents on the seat cushions and backrests. The dashboard, steering wheel, and center console also feature these brown accents. The interior is well-lit, and the view through the windows shows a rural landscape with a white fence and green fields. The text "INTERIOR DESIGN" is overlaid in a yellow box in the top left corner.

INTERIOR DESIGN

2500 HD Crew Cab High Country interior in Jet Black with Umber accents and available features.

HOME IS WHEREVER THE ROAD TAKES YOU.

The large dimensions of Silverado HD mean more interior space. Front seating was designed for a commanding view of the road. Rear passengers will enjoy ample leg room and shoulder room.

Inside every Silverado HD, trim colors, materials and finishes were selected to match the personality of the model. Nothing was overlooked, including an attention to **comfort, durability and quality.**

To bring you a **quiet cabin**, we included acoustic panels in the rear seatback, dissipative carpet technology that helps absorb sound, and a high-density interior front-of-dash mat on diesel models. All that technology is sure to enhance your enjoyment of the available Bose premium 7-speaker sound system.

Rear-seat heating and cooling vents in Double Cab and Crew Cab models keep rear passengers in controlled comfort.

A detailed view of the interior of a Chevrolet Silverado HD Crew Cab High Country. The image shows the driver's side, including the steering wheel with the Chevrolet logo, the instrument cluster, the infotainment screen, and the center console. The interior features a combination of black and brown leather upholstery, with brown leather accents on the seats and door panels. The dashboard and center console have a black finish with brown leather trim. The infotainment screen displays various icons for navigation, music, and phone. The steering wheel has multiple control buttons. The background shows a view through the windshield of a grassy field and a white fence.

INTERIOR DESIGN

EVERYTHING IN ITS PROPER PLACE.

The perfect truck doesn't just work hard — it works smart.

The driver-focused functionality of Silverado HD is evident in large buttons and knobs that are easy to adjust, even with gloved hands. Upper and lower glove boxes provide space for work papers, manuals and more, and open compartments on either side of the center console are ideal for flashlights or even a small tablet. An available lighted center console storage compartment below the armrest doubles as a filing cabinet.

2500 HD Crew Cab High Country interior in Jet Black with Umber accents and available features.

INTERIOR DESIGN



SILVERADO HD IS JUST AS CAPABLE ON THE INSIDE.

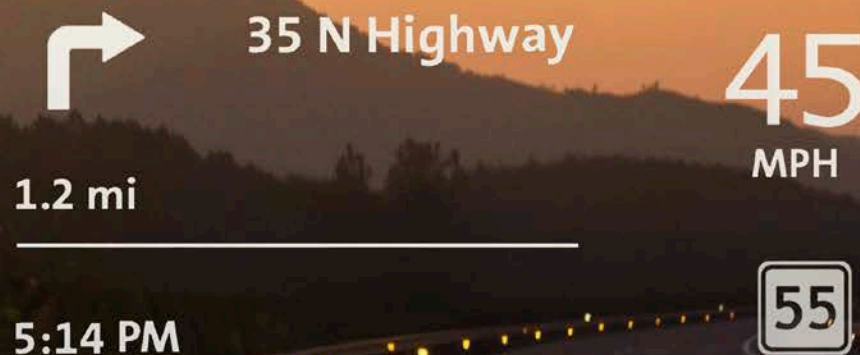
The Silverado HD interior is designed to give you plenty of places to store items large and small. Available **second-row storage solutions** include rear outboard seatback compartments to keep small laptops out of sight, as well as a **storage bin below the rear seat** that can hold long gear like an ice scraper or smaller tools.

The back side of the front console offers **climate control vents**, cup holders and USB ports¹ for the convenience of rear seat-passengers.



¹ Not compatible with all devices.

TECHNOLOGY



HARDWORKING CONNECTIONS.

- Available 15-inch diagonal multi-color Head-Up Display projects critical data onto the windshield so you can keep your eyes on the road.
- The Chevrolet Infotainment 3 system¹ is intuitive and easy to use, with a 7- or 8-inch diagonal color touch-screen display, fast response and available enhanced voice recognition.
- With available Alexa Built-In² you can use voice commands to stream your favorite music, get directions, make calls, change your radio station and more — on the go.
- In Silverado HD, a 4-display experience is possible with the available color touch-screen, multi-color Driver Information Center, Rear Camera Mirror³ and multi-color Head-Up Display.

¹ Chevrolet Infotainment System functionality varies by model. Full functionality requires compatible Bluetooth and smartphone, and USB connectivity for some devices. ² Functionality is subject to limitations and varies by vehicle, infotainment system and location. Select service plan required. Certain Alexa Skills require account linking to use. Amazon, Alexa and all related logos and motion marks are trademarks of Amazon.com, Inc., or its affiliates. Visit onstar.com for additional details.

³ Read the vehicle Owner's Manual for important feature limitations and information.

TECHNOLOGY

Available wireless charging¹ pad. Standard on High Country; available on LTZ.

Three available Driver Information Center (DIC) cluster options, including the enhanced 8-inch DIC (shown) that's standard on High Country and available on LTZ.

Wireless Apple CarPlay^{®2} (shown) and wireless Android Auto^{™3} compatibility. Standard on LTZ and High Country; available on LT.

Up to six available USB ports⁴



¹ The system wirelessly charges one compatible mobile device. Some phones have built-in wireless charging technology and others require a special adaptor/back cover. To check for phone or other device compatibility, see my.chevrolet.com/learn or consult your carrier. ² Vehicle user interface is a product of Apple and its terms and privacy statements apply. Requires compatible iPhone and data plan rates apply. ³ Vehicle user interface is a product of Google and its terms and privacy statements apply. Requires the Android Auto app on Google Play and a compatible Android smartphone. Data plan rates apply. You can check which smartphones are compatible at g.co/androidauto/requirements. ⁴ Not compatible with all devices.

Apple CarPlay, iPhone, Siri and Apple Music are trademarks of Apple Inc., registered in the U.S. and other countries. Android and Android Auto are trademarks of Google LLC.

SAFE IS THE NEW STRONG.



Automatic Emergency Braking. At speeds below 50 mph, this feature works with Forward Collision Alert to help you avoid or reduce the severity of a front-end collision with a detected vehicle you're following by automatically providing hard emergency braking or enhancing the driver's hard braking. Available on WT, Custom, LTZ and High Country.



Forward Collision Alert. Can warn you if it detects a potential front-end collision with a vehicle you're following. It can also provide a tailgating alert if you're following much too closely. Available on WT, Custom, LTZ and High Country.



Following Distance Indicator. This feature can display the gap time in seconds between your vehicle and a detected vehicle you're following. Available on LTZ and High Country.



Lane Departure Warning. This feature can alert you if you might be unintentionally drifting out of detected lane lines so you can quickly take action. System alerts do not occur if you are using your turn signal or it detects that you may be intentionally leaving your lane. Available on LTZ and High Country.



Lane Change Alert with Side Blind Zone Alert. This feature can provide side mirror visual alerts when a detected moving vehicle is quickly approaching or is in your side blind zone. Standard on High Country; available on WT, LT and LTZ.



Rear Cross Traffic Alert. This feature can warn you of detected left or right cross traffic behind your Silverado when in Reverse. Standard on High Country; available on WT, LT and LTZ.



Rear Vision Camera. This feature provides an image of the area directly behind your vehicle when traveling in Reverse at low speeds. A high-definition version is included on LTZ and High Country; available on LT.



Front and Rear Park Assist. Front and Rear Park Assist can provide distance alerts to nearby detected objects in front of or behind your vehicle to help you park and avoid collisions at low speeds. Standard on High Country; available on WT, LT and LTZ.



IntelliBeam®. Can automatically turn the vehicle's high beam headlamps on and off according to surrounding traffic conditions. Available on LTZ and High Country.



Safety Alert Seat. Safety Alert Seat uses driver-seat vibration pulses on the left, right or both sides to help you identify the direction of potential crashes so you can quickly take action. You can also switch to beeping crash avoidance alerts. Available on LTZ and High Country.

Safety starts with you. Safety or driver assistance features are no substitute for the driver's responsibility to operate the vehicle in a safe manner. The driver should remain attentive to traffic, surroundings and road conditions at all times. Visibility, weather and road conditions may affect feature performance. Read the vehicle Owner's Manual for more important feature limitations and information.

Available features shown.

DEPENDABILITY



When you've been building pickups for over 100 years, one thing you learn is there's a story behind every truck. And we want to hear yours. Chevy Truck Legends honors our dependable, long-lasting trucks and the people who keep them going strong. If you own an eligible Chevy truck and have purchased or leased more than one new Chevy truck in your lifetime or have driven one over 100,000 miles, you're a legend. Go to chevytrucklegends.com to discover the benefits that come with membership. Explore the galleries and read about the relationship owners have with their Chevy trucks.



Silverado HD is built on a legacy of long-lasting dependability. That means it's going to be ready to work year after year and mile after mile.

Performance testing simulated how the most demanding driver would expect their pickup to perform over long-term use. Whether it was placing the air intake system in a heavy rainstorm simulation, putting the driveline and

axles through an extended, accelerated wear-and-tear cycle, or driving the same trucks through extreme heat and bitter cold, every test was performed to help Silverado HD become the heavy-duty pickup you count on.

ACCESSORIES



Dealer-installed Center Console Lockable Storage Box from Chevrolet Accessories!



Dealer-installed Illuminated Door Sill Plate and Premium All-Weather Floor Liners from Chevrolet Accessories!



Dealer-installed Soft Roll-Up Tonneau Cover from Chevrolet Accessories!

ACCESSORIES

2500 HD Crew Cab Standard Bed LTZ 4x4 with available dealer-installed 20-inch Chrome Wheels, 6-inch Rectangular Assist Steps, Chrome Recovery Hooks, Black Badges and Chevrolet Bowtie Emblem and Chrome Hood Induction Assembly from Chevrolet Accessories²



¹ To avoid the risk of injury, never use recovery hooks to tow a vehicle. See the Owner's Manual for more information. ² Chevrolet Accessories are dealer-installed and covered by the GM 3-year/36,000-mile (whichever comes first) New Vehicle Limited Warranty when ordered with your new Silverado. See your dealer for details.

MODEL AVAILABILITY

● AVAILABLE – NOT AVAILABLE

REGULAR CAB – LONG BED



TRIM	2500 HD	3500 HD SRW	3500 HD DRW	STANDARD ENGINE	AVAILABLE ENGINE	2WD	4x4
WT	●	●	●	6.6L V8 gas	Duramax 6.6L V8	●	●
LT	●	●	●	6.6L V8 gas	Duramax 6.6L V8	●	●

DOUBLE CAB – STANDARD BED



TRIM	2500 HD	3500 HD SRW	3500 HD DRW	STANDARD ENGINE	AVAILABLE ENGINE	2WD	4x4
WT	●	–	–	6.6L V8 gas	Duramax 6.6L V8	●	●
Custom	●	–	–	6.6L V8 gas	Duramax 6.6L V8	●	●
LT	●	–	–	6.6L V8 gas	Duramax 6.6L V8	●	●
LTZ	●	–	–	6.6L V8 gas	Duramax 6.6L V8	●	●

DOUBLE CAB – LONG BED



TRIM	2500 HD	3500 HD SRW	3500 HD DRW	STANDARD ENGINE	AVAILABLE ENGINE	2WD	4x4
WT	●	●	●	6.6L V8 gas	Duramax 6.6L V8	●	●
Custom	●	–	–	6.6L V8 gas	Duramax 6.6L V8	●	●
LT	●	●	●	6.6L V8 gas	Duramax 6.6L V8	●	●
LTZ	●	–	–	6.6L V8 gas	Duramax 6.6L V8	●	●

CREW CAB – STANDARD BED



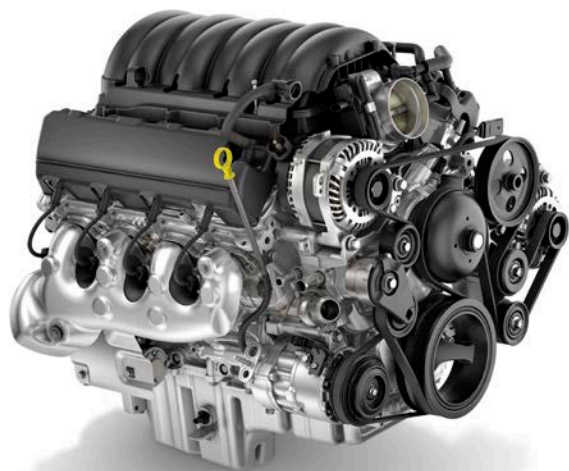
TRIM	2500 HD	3500 HD SRW	3500 HD DRW	STANDARD ENGINE	AVAILABLE ENGINE	2WD	4x4
WT	●	●	–	6.6L V8 gas	Duramax 6.6L V8	●	●
Custom	●	–	–	6.6L V8 gas	Duramax 6.6L V8	●	●
LT	●	●	–	6.6L V8 gas	Duramax 6.6L V8	●	●
LTZ	●	●	–	6.6L V8 gas	Duramax 6.6L V8	●	●
High Country	●	●	–	6.6L V8 gas	Duramax 6.6L V8	–	●

CREW CAB – LONG BED



TRIM	2500 HD	3500 HD SRW	3500 HD DRW	STANDARD ENGINE	AVAILABLE ENGINE	2WD	4x4
WT	●	●	●	6.6L V8 gas	Duramax 6.6L V8	●	●
Custom	●	–	–	6.6L V8 gas	Duramax 6.6L V8	●	●
LT	●	●	●	6.6L V8 gas	Duramax 6.6L V8	●	●
LTZ	●	●	●	6.6L V8 gas	Duramax 6.6L V8	●	●
High Country	●	●	●	6.6L V8 gas	Duramax 6.6L V8	–	●

ENGINE SPECIFICATIONS



6.6L V8 GAS Standard on all 2500 HD and 3500 HD models.

Variable Valve Timing (VVT) and Direct Injection

6-speed automatic transmission

401 hp @ 5200 rpm

464 lb.-ft. of torque @ 4000 rpm

Displacement: 6564 cc (400 cu. in.)

Bore and stroke: 103.25 mm x 98 mm

Compression ratio: 10.75:1

Alternator: 170 amps



DURAMAX 6.6L TURBO-DIESEL V8 Available on 2500 HD and 3500 HD models.

Direct Injection with high-pressure common rail

Allison® 10-speed automatic transmission

445 hp @ 2800 rpm

910 lb.-ft. of torque @ 1600 rpm

Displacement: 6619 cc (403 cu. in.)

Bore and stroke: 103 mm x 99 mm

Compression ratio: 16.0:1

Alternator: 220 amps

PAYLOAD AND TRAILER WEIGHT RATINGS – 2500 HD

MODEL	ENGINE	WHEEL SIZE	GVWR (LBS.) ¹	MAX PAYLOAD (LBS.) ²	MAX CONVENTIONAL TOWING (LBS.) ³	MAX GOOSENECK/ 5TH-WHEEL TOWING (LBS.) ³
2500 HD REGULAR CAB						
Long Bed 2WD	6.6L V8 gas	17"/18"	9,900	3,757	14,500	17,370
	6.6L V8 gas	17"	10,000	3,857	14,500	17,370
	6.6L V8 gas	18"/20"	10,150	3,979	14,500	17,340
	Duramax 6.6L V8	17"	10,550	3,544	14,500	18,510
	Duramax 6.6L V8	18"/20"	10,750	3,715	14,500	18,480
Long Bed 4x4	6.6L V8 gas	17"/18"	10,000	3,544	14,500	17,060
	6.6L V8 gas	17"	10,250	3,794	14,500	17,060
	6.6L V8 gas	18"/20"	10,450	3,965	14,500 ⁴	17,030
	Duramax 6.6L V8	17"	10,900	3,581	14,500	18,190
	Duramax 6.6L V8	18"/20"	11,025	3,715	14,500 ⁴	18,160
2500 HD DOUBLE CAB						
Standard Bed 2WD	6.6L V8 gas	17"/18"	10,000	3,541	14,500	17,050
	6.6L V8 gas	17"	10,050	3,591	14,500	17,050
	6.6L V8 gas	18"/20"	10,250	3,762	14,500	17,000
	Duramax 6.6L V8	17"	10,700	3,390	14,500	18,200
	Duramax 6.6L V8	18"/20"	10,900	3,561	14,500	18,170
Standard Bed 4x4	6.6L V8 gas	17"/18"	10,000	3,226	14,500	16,740
	6.6L V8 gas	17"	10,350	3,576	14,500	16,740
	6.6L V8 gas	18"/20"	10,550	3,747	14,500 ⁴	16,710
	Duramax 6.6L V8	17"/18"	10,000	2,375	14,500	12,610
	Duramax 6.6L V8	17"	11,000	3,375	14,500	17,890
Long Bed 2WD	Duramax 6.6L V8	18"/20"	11,200	3,546	14,500 ⁴	17,860
	6.6L V8 gas	17"/18"	10,000	3,420	14,500	16,930
	6.6L V8 gas	17"	10,200	3,620	14,500	16,930
	6.6L V8 gas	18"/20"	10,400	3,792	14,500	16,900
	Duramax 6.6L V8	17"	10,900	3,424	14,500	18,040
Long Bed 4x4	Duramax 6.6L V8	18"/20"	11,100	3,595	14,500	18,010
	6.6L V8 gas	17"/18"	10,000	3,133	14,500	16,650
	6.6L V8 gas	17"	10,500	3,633	14,500	16,650
	6.6L V8 gas	18"/20"	10,750	3,854	14,500 ⁴	16,620
	Duramax 6.6L V8	17"/18"	10,000	2,236	14,500	11,690
Long Bed 4x4	Duramax 6.6L V8	17"	11,200	3,436	14,500	17,750
	Duramax 6.6L V8	18"/20"	11,450	3,657	14,500 ⁴	17,720

MODEL	ENGINE	WHEEL SIZE	GVWR (LBS.) ¹	MAX PAYLOAD (LBS.) ²	MAX CONVENTIONAL TOWING (LBS.) ³	MAX GOOSENECK/ 5TH-WHEEL TOWING (LBS.) ³
2500 HD CREW CAB						
Standard Bed 2WD	6.6L V8 gas	17"/18"	10,000	3,429	14,500	16,940
	6.6L V8 gas	17"	10,150	3,579	14,500	16,940
	6.6L V8 gas	18"/20"	10,350	3,751	14,500	16,900
	Duramax 6.6L V8	17"	10,000	2,532	14,500	13,660
	Duramax 6.6L V8	18"/20"	10,000	2,561	18,140	13,470
	Duramax 6.6L V8	17"	10,800	3,332	14,500	18,050
	Duramax 6.6L V8	18"/20"	11,050	3,553	18,500	18,500
Standard Bed 4x4	6.6L V8 gas	17"/18"	10,000	3,139	14,500	16,650
	6.6L V8 gas	17"	10,450	3,589	14,500	16,650
	6.6L V8 gas	18"/20"	10,650	3,760	14,500 ⁴	16,620
	Duramax 6.6L V8	17"	10,000	2,241	14,500	11,720
	Duramax 6.6L V8	18"/20"	10,000	2,213	17,850	11,530
	Duramax 6.6L V8	17"	11,150	3,391	14,500	17,750
	Duramax 6.6L V8	18"/20"	11,350	3,563	18,500 ⁴	18,500
Standard Bed High Country 4x4	6.6L V8 gas	20"	10,650	3,413	14,500	16,280
	Duramax 6.6L V8	20"	11,350	3,229	18,500	18,310
Long Bed 2WD	6.6L V8 gas	17"/18"	10,000	3,329	14,500	16,840
	6.6L V8 gas	17"	10,300	3,629	14,500	16,840
	6.6L V8 gas	18"/20"	10,500	3,800	14,500	16,810
	Duramax 6.6L V8	17"	10,000	2,365	14,500	12,550
	Duramax 6.6L V8	18"/20"	10,000	2,336	17,970	12,350
	Duramax 6.6L V8	17"	11,000	3,365	14,500	17,880
	Duramax 6.6L V8	18"/20"	11,200	3,536	18,500	18,500
Long Bed 4x4	6.6L V8 gas	17"/18"	10,000	3,040	14,500	16,550
	6.6L V8 gas	17"	10,650	3,690	14,500	16,550
	6.6L V8 gas	18"/20"	10,850	3,862	14,500 ⁴	16,520
	Duramax 6.6L V8	17"	10,000	2,076	14,500	10,620
	Duramax 6.6L V8	18"/20"	10,000	2,047	16,560	10,240
	Duramax 6.6L V8	17"	11,350	3,426	14,500	17,590
	Duramax 6.6L V8	18"/20"	11,550	3,597	18,500 ⁴	18,500
Long Bed High Country 4x4	6.6L V8 gas	20"	10,850	3,506	14,500	16,170
	Duramax 6.6L V8	20"	11,550	3,337	18,500	18,500

¹ Maximum Gross Vehicle Weight Rating (GVWR). When properly equipped; includes weight of vehicle, passengers, cargo and equipment. ² These maximum payload ratings are intended for comparison purposes only. Before you buy a vehicle or use it to haul people or cargo, carefully review the Vehicle Loading section of the Owner's Manual and check the carrying capacity of your specific vehicle on the label on the inside of the driver door jamb. ³ Before you buy a vehicle or use it for trailering, carefully review the Trailering section of the Owner's Manual. The weight of passengers, cargo and options or accessories may reduce the amount you can tow. ⁴ With available 18" mud-terrain tires (QG3), maximum conventional towing is 12,000 lbs.

PAYLOAD AND TRAILER WEIGHT RATINGS – 3500 HD

MODEL	ENGINE	WHEEL SIZE	GVWR (LBS.) ¹	MAX PAYLOAD (LBS.) ²	MAX CONVENTIONAL TOWING (LBS.) ³	MAX GOOSENECK/ 5TH-WHEEL TOWING (LBS.) ³
3500 HD REGULAR CAB						
Long Bed 2WD SRW	6.6L V8 gas	18"/20"	10,750	4,481	14,500	17,200
	Duramax 6.6L V8	18"/20"	11,500	4,215	14,500	21,500
Long Bed 4x4 SRW	6.6L V8 gas	18"/20"	11,100	4,534	14,500	16,950
	Duramax 6.6L V8	18"/20"	11,800	4,217	14,500	21,500
Long Bed 2WD DRW	6.6L V8 gas	17"	14,000	7,442	16,800	16,800
	Duramax 6.6L V8	17" (5th-Wheel)	14,000	6,523	20,000	32,000
	Duramax 6.6L V8	17" (Gooseneck)	14,000	6,465	20,000	36,000 ⁴
Long Bed 4x4 DRW	6.6L V8 gas	17"	14,000	7,145	16,800	16,710
	Duramax 6.6L V8	17"	14,000	6,196	20,000	31,760
3500 HD DOUBLE CAB						
Long Bed 2WD SRW	6.6L V8 gas	18"/20"	11,100	4,373	14,500	16,700
	Duramax 6.6L V8	18"/20"	11,850	4,130	14,500	21,490
Long Bed 4x4 SRW	6.6L V8 gas	18"/20"	11,400	4,391	14,500	16,500
	Duramax 6.6L V8	18"/20"	12,150	4,148	14,500	21,210
Long Bed 2WD DRW	6.6L V8 gas	17"	14,000	6,985	16,400	16,400
	Duramax 6.6L V8	17"	14,000	6,059	20,000	31,500
Long Bed 4x4 DRW	6.6L V8 gas	17"	14,000	6,703	16,390	16,270
	Duramax 6.6L V8	17"	14,000	5,777	20,000	31,340

MODEL	ENGINE	WHEEL SIZE	GVWR (LBS.) ¹	MAX PAYLOAD (LBS.) ²	MAX CONVENTIONAL TOWING (LBS.) ³	MAX GOOSENECK/ 5TH-WHEEL TOWING (LBS.) ³
3500 HD CREW CAB						
Standard Bed 2WD SRW	6.6L V8 gas	18"/20"	11,000	4,316	14,500	16,700
	Duramax 6.6L V8	18"/20"	11,750	4,135	20,000	21,500
Standard Bed 4x4 SRW	6.6L V8 gas	18"/20"	11,350	4,365	14,500	16,530
	Duramax 6.6L V8	18"/20"	12,100	4,185	20,000	21,300
Standard Bed High Country 4x4 SRW	6.6L V8 gas	20"	11,350	4,068	14,500	16,230
	Duramax 6.6L V8	20"	12,100	3,915	20,000	21,030
Long Bed 2WD SRW	6.6L V8 gas	18"/20"	11,150	4,333	14,500	16,700
	Duramax 6.6L V8	18"/20"	11,900	4,013	20,000	21,330
Long Bed 4x4 SRW	6.6L V8 gas	18"/20"	11,500	4,398	14,500	16,410
	Duramax 6.6L V8	18"/20"	12,250	4,078	20,000	21,040
Long Bed High Country 4x4 SRW	6.6L V8 gas	20"	11,500	4,093	14,500	16,110
	Duramax 6.6L V8	20"	12,250	3,947	20,000	20,910
Long Bed 2WD DRW	6.6L V8 gas	17"	14,000	6,894	16,300	16,200
	Duramax 6.6L V8	17"	14,000	5,892	20,000	31,400
Long Bed 4x4 DRW	6.6L V8 gas	17"	14,000	6,610	16,240	16,120
	Duramax 6.6L V8	17"	14,000	5,662	20,000	31,180
Long Bed High Country 4x4 DRW	6.6L V8 gas	17"	14,000	6,390	16,020	15,900
	Duramax 6.6L V8	17"	14,000	5,488	20,000	31,000

¹ Maximum Gross Vehicle Weight Rating (GVWR). When properly equipped; includes weight of vehicle, passengers, cargo and equipment. ² These maximum payload ratings are intended for comparison purposes only. Before you buy a vehicle or use it to haul people or cargo, carefully review the Vehicle Loading section of the Owner's Manual and check the carrying capacity of your specific vehicle on the label on the inside of the driver door jamb. ³ Before you buy a vehicle or use it for trailering, carefully review the Trailering section of the Owner's Manual. The weight of passengers, cargo and options or accessories may reduce the amount you can tow. ⁴ Requires WT with available Max Trailering Package.

STANDARD EQUIPMENT

Standard on every Silverado HD:

MECHANICAL

Air filter – high-capacity with air filtration monitoring

Brakes – 4-wheel antilock disc with Duralife® brake rotors and brake lining wear indicator

Cooling – external engine and transmission oil coolers

Differential – automatic locking rear

Engine – 6.6L V8 gas with Variable Valve Timing (VVT) and Direct Injection

Frame – fully boxed frame with hydroformed front section

StabiliTrak – Electronic Stability Control System with Proactive Roll Avoidance and Traction Control; includes Electronic Trailer Sway Control and Hill Start Assist

Trailering Package – trailer hitch with 2.5-inch receiver and 2-inch insert, 7-pin wiring connector and Hitch Guidance¹

Transmission – 6-speed automatic

EXTERIOR

BedSteps – integrated on forward portion of bed on driver and passenger side

Bumper – rear CornerSteps

Cargo area lighting – integrated with center high-mounted stop lamp

Fuel filler – capless fueling (gas engine only)

Lamps – daytime running lamps, automatic on/off with automatic delay

Pickup bed – Durabed

Tailgate and bed rail – protection cap

Tie-downs – 12 fixed cargo tie-downs, rated at 500 lbs² per corner

EXTERIOR (CONTINUED)

Tire – carrier lock

Tire – full-size spare

INTERIOR

Air conditioning

Air vents – rear, heating/cooling (Double Cab and Crew Cab)

Airbags³ – dual-stage frontal airbags for driver and front outboard passenger; seat-mounted side-impact airbags for driver and front outboard passenger; head-curtain airbags for front and rear outboard seating positions; includes front outboard Passenger Sensing System for frontal outboard passenger airbag

Assist handles – driver and front passenger, A-pillar; rear passenger, B-pillar

Connectivity – Bluetooth® phone connectivity and wireless audio streaming⁴

Display – outside temperature

Door locks – manual (Regular Cab); power programmable with lockout protection and manual rear door child security (Double Cab and Crew Cab)

Instrument cluster – 6-gauge with speedometer, fuel level, engine temperature, tachometer, voltage and oil pressure

Power outlet – 12-volt auxiliary, front

Rear Seat Reminder⁵ (Double Cab and Crew Cab)

Teen Driver technology

Tire Pressure Monitoring System – with Tire Fill Alert (does not apply to spare tire)

¹ Read the vehicle Owner's Manual for important feature limitations and information. ² These maximum payload ratings are intended for comparison purposes only. Before you buy a vehicle or use it to haul people or cargo, carefully review the Vehicle Loading section of the Owner's Manual and check the carrying capacity of your specific vehicle on the label on the inside of the driver door jamb. ³ A NOTE ON CHILD SAFETY: Always use seat belts and the correct child restraint for your child's age and size, even with airbags. Even in vehicles equipped with the Passenger Sensing System, children are safer when properly secured in a rear seat in the appropriate infant, child or booster seat. Never place a rear-facing infant restraint in the front seat of any vehicle equipped with an active frontal airbag. See your vehicle Owner's Manual and the child safety seat instructions for more safety information. ⁴ Go to my.chevrolet.com/learnAbout/bluetooth to find out which phones are compatible with the vehicle. Full Bluetooth feature functionality varies by device, model and software version. ⁵ Does not detect people or items. Always check rear seat before exiting.

WT & POPULAR EQUIPPED MODEL



WORK TRUCK (WT)

Available on 2500 HD and 3500 HD Regular Cab, Double Cab and Crew Cab. In addition to standard equipment, WT includes:

MECHANICAL

Steering – recirculating ball with smart flow power steering system

Transfer case – 2-speed electronic (4x4 models)

EXTERIOR

Bumpers – Black, front and rear

Door handles – Black

Glass – solar-absorbing tinted

Grille – Chevrolet lettered grille, Black front grille bar, and Black mesh grille inserts with small Gold bowtie emblem

Headlamps – halogen reflector headlamps and daytime running lamps

Mirror caps – Black

Mirrors – vertical trailing, manual-adjustable, manual-folding and manual-extending with lower convex mirrors

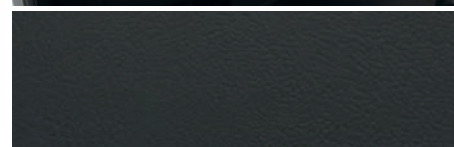
Moldings – Black window beltline

Recovery hooks¹ – Black

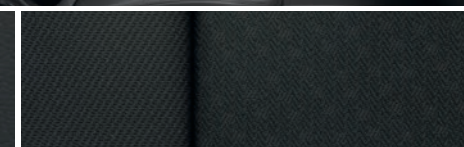
Tailgate – manual lift

Taillamps – incandescent

Tires – LT245/75R17E all-season (2500 HD); LT275/70R18E all-terrain (3500 HD SRW); LT235/80R17E all-season highway (3500 HD DRW)



Jet Black Vinyl (shown)



Jet Black Cloth

INTERIOR

Air conditioning – single-zone

Audio – 2-speaker system (Regular Cab); 6-speaker system (Double Cab and Crew Cab)

Driver Information Center – 3.5-inch diagonal monochromatic display

Entertainment – Chevrolet Infotainment 3 system² with 7-inch diagonal color touch-screen, AM/FM stereo, Bluetooth[®] audio streaming³ for two active devices, voice command pass-through to compatible phone, and Apple CarPlay^{®4} and Android Auto^{™5} compatibility

Floor covering – rubberized vinyl

Media – two USB ports⁶ on instrument panel

Rear Vision Camera⁷

Seat – front 40/20/40 split-bench with covered armrest storage and 4-way manual driver and front passenger seat adjusters

Seat – rear 60/40 folding bench (Double Cab and Crew Cab)

Steering column – tilt-wheel manual steering column with security locking feature

Windows – manual (Regular Cab); power with driver express-up/-down, all others express-down (Double Cab and Crew Cab)

¹ To avoid the risk of injury, never use recovery hooks to tow a vehicle. See the Owner's Manual for more information. ² Chevrolet Infotainment System functionality varies by model. Full functionality requires compatible Bluetooth and smartphone, and USB connectivity for some devices. ³ Go to my.chevrolet.com/learnAbout/bluetooth to find out which phones are compatible with the vehicle. Full Bluetooth feature functionality varies by device, model and software version. ⁴ Vehicle user interface is a product of Apple and its terms and privacy statements apply. Requires compatible iPhone and data plan rates apply. ⁵ Vehicle user interface is a product of Google and its terms and privacy statements apply. Requires the Android Auto app on Google Play and an Android compatible smartphone running Android 5.0 or higher. Data plan rates apply. ⁶ Not compatible with all devices. ⁷ Read the vehicle Owner's Manual for important feature limitations and information.

WT & POPULAR EQUIPPED MODEL (CONTINUED)

Summit White (GAZ)

Silver Ice Metallic (GAN)

Oxford Brown Metallic (GNK)

Red Hot (G7C)

Northsky Blue Metallic (GA0)

Black (GBA)



17" Painted-Steel Wheels (PYN)
Standard on 2500 HD WT



17" Painted-Steel Wheels (PYW)
Standard on 3500 HD WT DRW



17" Painted-Steel Wheels with Chrome
Trim and Caps (PYW with P06)
Available on 3500 HD WT DRW



17" Forged Polished-Aluminum Wheels (RS7)
Available on 3500 HD WT DRW
with Max Trailering Package



17" Machined-Aluminum Wheels (PYQ)
Available on 2500 HD WT



18" Painted-Steel Wheels (PYT)
Available on 2500 HD WT;
standard on 3500 HD WT SRW



18" Machined-Aluminum Wheels
with Silver-Painted Accents (PYV)
Available on 3500 HD WT SRW



18" High-Gloss Black Aluminum Wheels (PTW)
Included on 2500 HD WT and 3500 HD WT SRW
with Alaskan Snow Plow Special Edition

WT & POPULAR EQUIPPED MODEL (CONTINUED)



2500 HD CREW CAB WT 4x4 Popular Equipped Model includes:

Available Engines – 6.6L V8 gas or Duramax 6.6L Turbo-Diesel V8

Assist steps – Black work step (dealer-installed)

WT Convenience Package – Remote Keyless Entry, EZ Lift power lock and release tailgate, deep-tinted rear windows, rear-window defogger, cruise control, and outside power-adjustable, manual-folding and manual-extending vertical trailing mirrors with heated upper glass, lower convex mirrors and integrated turn signal indicators; Regular Cab includes power windows with driver express-up/-down and passenger express-down and power door locks

POPULAR OPTIONS FOR CONSIDERATION

Bedliner – Chevytec spray-on bedliner with logo

Bed View Camera¹ – camera integrated with center high-mounted stop lamp to show a view of the cargo bed; display located in rearview mirror (not available with Regular Cab, Rear Camera Mirror¹ or standard rearview mirror, and not available with interior auto-dimming rearview mirror when auto-dimming vertical trailer mirrors are ordered)

Gooseneck/5th Wheel Package – hitch platform to accept gooseneck or 5th-wheel hitch; includes hitch platform with tray to accept ball, stamped bed holes with removable caps installed and bed-mounted 7-pin trailer harness

Safety Confidence Package – Forward Collision Alert¹; Automatic Emergency Braking¹; steering wheel-mounted audio and phone controls, and Driver Information Center with 4.2-inch diagonal color display and driver personalization

Snow Plow Prep/Camper Package (4x4 models) – power feed for roof emergency light, pass-through dash grommet, 220-amp alternator, skid plates and increased front GAWR (not available with Heavy-Duty Front Spring/Camper Package)

¹ Safety or driver assistance features are no substitute for the driver's responsibility to operate the vehicle in a safe manner. The driver should remain attentive to traffic, surroundings and road conditions at all times. Visibility, weather and road conditions may affect feature performance. Read the vehicle Owner's Manual for more important feature limitations and information.

CUSTOM & POPULAR EQUIPPED MODEL



CUSTOM

Available on 2500 HD Double Cab and Crew Cab. In addition to or replacing WT features, Custom includes:

EXTERIOR

Bumpers – high-gloss Black, front and rear

Glass – deep-tinted behind front doors

Grille – Chevrolet lettered grille, body-color front grille bar, body-color grille surround and Black mesh grille inserts with small Gold bowtie emblem

Mirrors – vertical trailing, heated upper glass, power-adjustable, manual-folding and manual-extending with lower convex mirrors and integrated turn signal indicators

Taillamps – LED

Tires – LT275/65R20 all-terrain

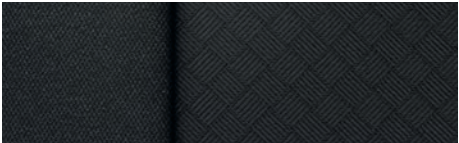
INTERIOR

Cruise control – electronic with Set and Resume Speed, steering wheel-mounted controls

Floor covering – color-keyed carpeting

Floor mats – vinyl, front and rear

Remote Keyless Entry



Jet Black Cloth

CUSTOM & POPULAR EQUIPPED MODEL (CONTINUED)

Summit White (GAZ)

Silver Ice Metallic (GAN)

Oxford Brown Metallic (GNK)

Red Hot (G7C)

Northsky Blue Metallic (GA0)

Mosaic Black Metallic (GB8)

Black (GBA)



20" 10-Spoke Machined-Aluminum Wheels
with Grazen Metallic-Painted Accents (Q86)
Standard on 2500 HD Custom



2500 HD CREW CAB CUSTOM 4x4 Popular Equipped Model includes:

Available Engines – 6.6L V8 gas or Duramax 6.6L Turbo-Diesel V8

Assist steps – Black, 4-inch round (dealer-installed)

Custom Value Package – Custom Convenience Package (remote vehicle starter system, rear-window defogger, LED cargo area lighting in pickup bed, EZ Lift power lock and release tailgate, and integrated trailer brake controller), Infotainment Package (SiriusXM®1 All Access Package with 3-month trial subscription; up to 3 months of OnStar Safety & Security and Chevrolet Connected Services coverage;2 1 month or 3 GB [whichever comes first] of available 4G LTE Wi-Fi®3 Hotspot; up to 10 years of Chevrolet Connected Access4), vertical trailering mirrors with heated upper glass, auto-dimming driver side, power-adjustable, power-folding and manual-extending with lower convex mirrors and integrated turn signal indicators, puddle lamps, perimeter lighting and auxiliary lighting, and interior auto-dimming rearview mirror

POPULAR OPTIONS FOR CONSIDERATION

Bedliner – Chevytec spray-on bedliner with logo

Bed View Camera5 – camera integrated with center high-mounted stop lamp to show a view of the cargo bed; display located in rearview mirror (not available with Regular Cab, Rear Camera Mirror5 or standard rearview mirror, and not available with interior auto-dimming rearview mirror when auto-dimming vertical trailer mirrors are ordered)

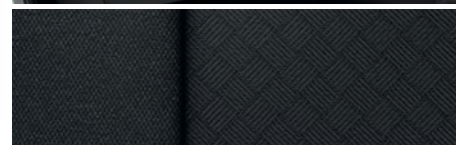
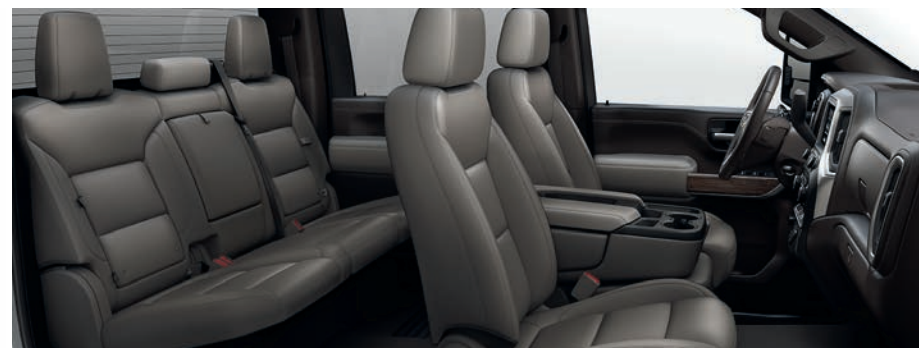
Gooseneck/5th Wheel Package – hitch platform to accept gooseneck or 5th-wheel hitch; includes hitch platform with tray to accept ball, stamped bed holes with removable caps installed and bed-mounted 7-pin trailer harness

Safety Confidence Package – Forward Collision Alert5; Automatic Emergency Braking5; steering wheel-mounted audio and phone controls, and Driver Information Center with 4.2-inch diagonal color display and driver personalization

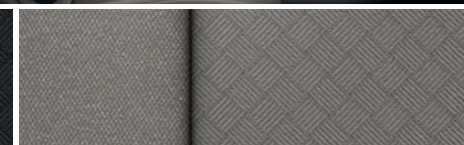
Snow Plow Prep/Camper Package (4x4 models) – power feed for roof emergency light, pass-through dash grommet, 220-amp alternator, skid plates and increased front GAWR (not available with Heavy-Duty Front Spring/Camper Package)

¹ If you decide to continue service after your trial, the subscription plan you choose will automatically renew thereafter and you will be charged according to your chosen payment method at then-current rates. Fees and taxes apply. See the SiriusXM Customer Agreement at siriusxm.com for complete terms and how to cancel. All fees, content, features and availability are subject to change. ² When you select a monthly plan within 30 days of activating your 1-month trial, you'll receive the next 2 months of the plan you select at no additional charge when you associate an approved payment method on file to your account and authorize recurring payments for your service plan. The amount and frequency of each recurring payment is based upon the service(s) and payment interval(s) you select from the options provided. After the trial expires, OnStar will automatically bill your payment method monthly at then-current standard monthly rates. Plans containing 4G LTE data will be billed every 30 days by AT&T. You may cancel at any time by pushing your blue OnStar button or calling 1-888-466-7827. May not be combined with other offers or retroactively applied. Offer subject to change. ³ Service varies with conditions and location. Requires active service and paid AT&T data plan. Visit onstar.com for details and limitations. Availability subject to change. ⁴ Standard connectivity available only to original purchaser for up to 10 years. Connected Access services are subject to change. Does not include emergency or security services. Diagnostic capabilities vary by model and service plan. Message and data rates may apply. Requires contact method on file and enrollment to receive alerts. Not all issues will deliver alerts. Visit onstar.com for details and limitations. ⁵ Safety or driver assistance features are no substitute for the driver's responsibility to operate the vehicle in a safe manner. The driver should remain attentive to traffic, surroundings and road conditions at all times. Visibility, weather and road conditions may affect feature performance. Read the vehicle Owner's Manual for more important feature limitations and information.

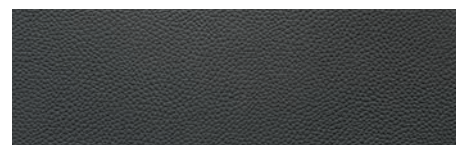
LT & POPULAR EQUIPPED MODELS



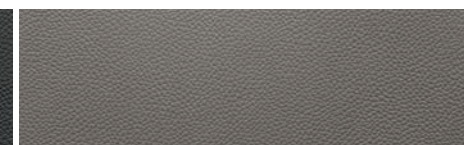
Jet Black Cloth



Gideon Cloth



Jet Black Leather-Appointed Front Seating



Gideon Leather-Appointed Front Seating (shown)

LT

Available on 2500 HD and 3500 HD Regular Cab, Double Cab and Crew Cab. In addition to or replacing WT features, LT includes:

MECHANICAL

Trailer brake controller – integrated

EXTERIOR

Bumpers – chrome, front and rear

Door handles – body-color

Glass – deep-tinted behind front doors

Grille – Chevrolet lettered grille, chrome front grille bar, and Black mesh grille inserts with small Gold bowtie emblem

Mirrors – vertical trailing, heated upper glass, power-adjustable, manual-folding and manual-extending with lower convex mirrors and integrated turn signal indicators

Tailgate – EZ Lift, includes power lock and release

INTERIOR

Compass – located in instrument cluster

Cruise control – electronic with Set and Resume Speed (2500 HD Regular Cab and 3500 HD)

Door locks – power programmable with lockout protection (Regular Cab)

Driver Information Center – 4.2-inch diagonal color display and driver personalization

Entertainment – Chevrolet Infotainment 3 system¹ with 8-inch diagonal color touch-screen, AM/FM stereo, Bluetooth[®] audio streaming² for two active devices, voice command pass-through to compatible phone, and Apple CarPlay^{®3} and Android Auto^{™4} compatibility

Floor covering – color-keyed carpeting

INTERIOR (CONTINUED)

Floor mats – vinyl, front and rear

OnStar – up to 3 months of OnStar Safety & Security coverage⁵

Remote Keyless Entry (2500 HD Regular Cab and 3500 HD)

SiriusXM^{®6} – All Access Package with 3-month trial subscription

Steering wheel – mounted audio, cruise and phone controls (2500 HD Regular Cab and 3500 HD)

Windows – power with driver express-up/-down, passenger express-down (Regular Cab)

Available 4G LTE Wi-Fi^{®7} Hotspot – for up to seven devices, includes 1 month or 3 GB of data (whichever comes first)

Chevrolet Connected Access⁸ – with up to 10 years of standard connectivity, which currently enables features such as Vehicle Diagnostics and Dealer Maintenance Notification

¹ Chevrolet Infotainment System functionality varies by model. Full functionality requires compatible Bluetooth and smartphone, and USB connectivity for some devices. ² Go to my.chevrolet.com/learnAbout/bluetooth to find out which phones are compatible with the vehicle. Full Bluetooth feature functionality varies by device, model and software version. ³ Vehicle user interface is a product of Apple and its terms and privacy statements apply. Requires compatible iPhone and data plan rates apply. ⁴ Vehicle user interface is a product of Google and its terms and privacy statements apply. Requires the Android Auto app on Google Play and an Android compatible smartphone running Android 5.0 or higher. Data plan rates apply. ⁵ When you select a monthly plan within 30 days of activating your 1-month trial, you'll receive the next 2 months of the plan you select at no additional charge when you associate an approved payment method on file to your account and authorize recurring payments for your service plan. The amount and frequency of each recurring payment is based upon the service(s) and payment interval(s) you select from the options provided. After the trial expires, OnStar will automatically bill your payment method monthly at then-current standard monthly rates. Plans containing 4G LTE data will be billed every 30 days by AT&T. You may cancel at any time by pushing your blue OnStar button or calling 1-888-466-7827. May not be combined with other offers or retroactively applied. Offer subject to change. ⁶ If you decide to continue service after your trial, the subscription plan you choose will automatically renew thereafter and you will be charged according to your chosen payment method at then-current rates. Fees and taxes apply. See the SiriusXM Customer Agreement at siriusxm.com for complete terms and how to cancel. All fees, content, features and availability are subject to change. ⁷ Service varies with conditions and location. Requires active service and paid AT&T data plan. Visit onstar.com for details and limitations. Availability subject to change. ⁸ Standard connectivity available only to original purchaser for up to 10 years. Connected Access services are subject to change. Does not include emergency or security services. Diagnostic capabilities vary by model and service plan. Message and data rates may apply. Requires contact method on file and enrollment to receive alerts. Not all issues will deliver alerts. Visit onstar.com for details and limitations.

LT & POPULAR EQUIPPED MODELS (CONTINUED)

Summit White (GAZ)

Iridescent Pearl Tricoat¹ (G1W)

Silver Ice Metallic (GAN)

Oxford Brown Metallic (GNK)

Red Hot (G7C)

Cherry Red Tintcoat¹ (GSK)

Northsky Blue Metallic (GA0)

Mosaic Black Metallic (GB8)

Black (GBA)



17" Machined-Aluminum Wheels (PYQ)
Standard on 2500 HD LT



17" Painted-Steel Wheels
with Chrome Trim and Caps (PYW with P06)
Standard on 3500 HD LT DRW



18" Painted-Steel Wheels (PYT)
Available on 2500 HD LT and 3500 HD LT SRW



18" Machined-Aluminum Wheels
with Silver-Painted Accents (PYV)
Standard on 3500 HD LT SRW; available on 2500 HD LT



18" High-Gloss Black Aluminum Wheels (PTW)
Included on 2500 HD LT and 3500 HD LT SRW
with Alaskan Snow Plow Special Edition,
Midnight Edition or Z71 Sport Edition



20" 10-Spoke Machined-Aluminum Wheels
with Grazen Metallic-Painted Accents (Q86)
Available on 2500 HD LT and 3500 HD LT SRW;
included on 2500 HD LT and 3500 HD LT SRW with
Z71 Chrome Sport Edition



20" Black-Painted Aluminum Wheels
with Black Center Caps (NZD)
Available on 2500 HD LT and 3500 HD LT SRW
with Midnight Edition or Z71 Sport Edition

¹ Extra-cost color.

LT & POPULAR EQUIPPED MODELS (CONTINUED)



2500 HD CREW CAB LT ALL STAR 4x4

Popular Equipped Model includes:

Assist steps – chrome, 4-inch round (dealer-installed)

All Star Edition – Convenience Package (dual-zone automatic climate control, 10-way power driver-seat adjuster with power lumbar control, heated driver and front outboard passenger seats, heated leather-wrapped steering wheel, manual tilt/telescoping steering column with security locking feature, rear-window defogger, Keyless Open and Start, remote vehicle starter system, unauthorized entry theft-deterrent system, LED cargo area lighting in pickup bed, LED fog lamps, rear wheelhouse liners, front 40/20/40 split-bench seat with lockable underseat storage, two charge-only USB ports¹ in second row, and rear 12-volt auxiliary power outlet) and Safety Package² (Front and Rear Park Assist, Lane Change Alert with Side Blind Zone Alert and Rear Cross Traffic Alert)

Z71 Off-Road and Protection Package – Z71 Off-Road Package with Off-Road suspension and off-road tuned twin-tube shocks, Hill Descent Control, skid plates, Z71 fender badge (replaces standard 4x4 bed-mounted decal), Chevytec spray-on bedliner with logo, all-weather floor liners with Z71 logo, 18" machined-aluminum wheels with Silver-painted accents (PYV) and LT275/70R18E all-terrain tires

POPULAR OPTIONS FOR CONSIDERATION

Gooseneck/5th Wheel Package – hitch platform to accept gooseneck or 5th-wheel hitch; includes hitch platform with tray to accept ball, stamped bed holes with removable caps installed and bed-mounted 7-pin trailer harness

Snow Plow Prep/Camper Package (4x4 models) – power feed for roof emergency light, pass-through dash grommet, 220-amp alternator, skid plates and increased front GAWR (not available with Heavy-Duty Front Spring/Camper Package)

Wheels – 20" 10-spoke machined-aluminum with Grazen Metallic-painted accents (Q86)

2500 HD CREW CAB LT DURAMAX 4x4 Popular Equipped Model includes:

Available Engine – Duramax 6.6L Turbo-Diesel V8

Duramax and Appearance Package – 20" 10-spoke machined-aluminum wheels with Grazen Metallic-painted accents (Q86), LT275/65R20 all-terrain tires, chrome recovery hooks³ and 4-inch round chrome assist steps (dealer-installed)

POPULAR OPTIONS FOR CONSIDERATION

Bedliner – Chevytec spray-on bedliner with logo

Gooseneck/5th Wheel Package – hitch platform to accept gooseneck or 5th-wheel hitch; includes hitch platform with tray to accept ball, stamped bed holes with removable caps installed and bed-mounted 7-pin trailer harness

Snow Plow Prep/Camper Package (4x4 models) – power feed for roof emergency light, pass-through dash grommet, 220-amp alternator, skid plates and increased front GAWR (not available with Heavy-Duty Front Spring/Camper Package)

2500 HD CREW CAB LT DURAMAX ALL STAR 4x4

Popular Equipped Model includes:

Available Engine – Duramax 6.6L Turbo-Diesel V8

Duramax and Appearance Package – 20" 10-spoke machined-aluminum wheels with Grazen Metallic-painted accents (Q86), LT275/65R20 all-terrain tires, chrome recovery hooks³ and 4-inch round chrome assist steps (dealer-installed)

All Star Edition – Convenience Package (dual-zone automatic climate control, 10-way power driver-seat adjuster with power lumbar control, heated driver and front outboard passenger seats, heated leather-wrapped steering wheel, manual tilt/telescoping steering column with security locking feature, rear-window defogger, Keyless Open and Start, remote vehicle starter system, unauthorized entry theft-deterrent system, LED cargo area lighting in pickup bed, LED fog lamps, rear wheelhouse liners, front 40/20/40 split-bench seat with lockable underseat storage, two charge-only USB ports¹ in second row, and rear 12-volt auxiliary power outlet) and Safety Package² (Front and Rear Park Assist, Lane Change Alert with Side Blind Zone Alert and Rear Cross Traffic Alert)

POPULAR OPTIONS FOR CONSIDERATION

Bedliner – Chevytec spray-on bedliner with logo

Convenience Package II – instrument panel-mounted 120-volt power outlet and bed-mounted 120-volt power outlet (400 watts shared), Chevrolet Infotainment 3 Plus system⁴ with 8-inch diagonal HD color touch-screen, SiriusXM[®] with 360L⁵ All Access Package with 3-month trial subscription, SD card reader, HD Rear Vision Camera² Hitch Guidance with Hitch View,² Advanced Trailering System, Universal Home Remote, power-sliding rear window and Cloth Rear Seat with Storage Package

Gooseneck/5th Wheel Package – hitch platform to accept gooseneck or 5th-wheel hitch; includes hitch platform with tray to accept ball, stamped bed holes with removable caps installed and bed-mounted 7-pin trailer harness

Snow Plow Prep Package (4x4 models) – power feed for roof emergency light, pass-through dash grommet, 220-amp alternator, skid plates and increased front GAWR (not available with Heavy-Duty Front Spring/Camper Package)

¹ Not compatible with all devices. ² Read the vehicle Owner's Manual for important feature limitations and information. ³ To avoid the risk of injury, never use recovery hooks to tow a vehicle. See the Owner's Manual for more information. ⁴ Chevrolet Infotainment System functionality varies by model. Full functionality requires compatible Bluetooth and smartphone, and USB connectivity for some devices. ⁵ If you decide to continue service after your trial, the subscription plan you choose will automatically renew thereafter and you will be charged according to your chosen payment method at then-current rates. Fees and taxes apply. See the SiriusXM Customer Agreement at siriusxm.com for complete terms and how to cancel. All fees, content, features and availability are subject to change. Certain features require a SiriusXM subscription and the Chevrolet Connected Access plan. See siriusxm.com and onstar.com for details and limitations.

LTZ & POPULAR EQUIPPED MODELS



LTZ

Available on 2500 HD Double Cab and Crew Cab and 3500 HD Crew Cab. In addition to or replacing LT features, LTZ includes:

MECHANICAL

Advanced Trailering System – includes trailering checklist, trailer maintenance reminders, trailer security alerts, trailer mileage, Tow/Haul mode reminder, trailer electrical diagnostics and Trailer Tire Pressure Monitoring System module

Hitch Guidance with Hitch View¹

Steering – Digital Variable Steering Assist

Transfer case – Autotrac 2-speed active electronic (4x4 models)

EXTERIOR

Fog lamps – LED

Grille – Chevrolet lettered grille, chrome front grille bar and chrome grille inserts with small Gold bowtie emblem

Headlamps – high-intensity LED reflector headlamps with LED signature curtain daytime running lamps

Mirrors – vertical trailering, heated and auto-dimming upper glass (driver and passenger), power-adjustable, power-folding and power-extending with lower convex mirrors, integrated turn signal indicators, puddle lamps, perimeter lighting and auxiliary lighting with chrome mirror caps

Power outlet – 120-volt (up to 400 watts, shared with instrument panel 120-volt outlet), bed-mounted

Taillamps – LED

Tires – LT275/70R18E all-terrain (2500 HD)

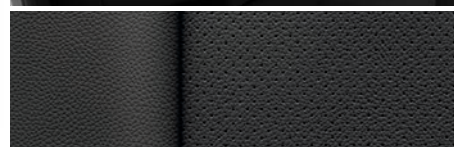
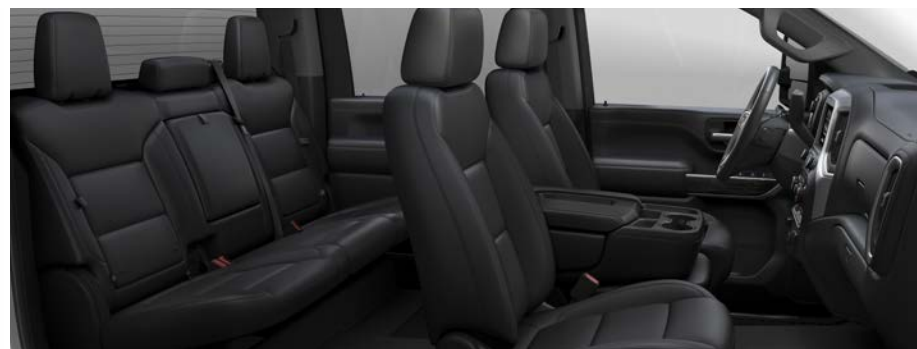
INTERIOR

Air conditioning – automatic, dual-zone with individual climate settings for driver and front passenger

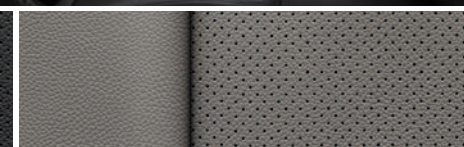
Defogger – rear-window

Entertainment – Chevrolet Infotainment 3 Plus system² with 8-inch diagonal HD color touch-screen, AM/FM stereo, HD Radio,³ Bluetooth[®] audio streaming³ for two active devices, wireless Apple CarPlay^{®4} and wireless Android Auto^{™5} compatibility, available Alexa Built-In⁶ voice recognition and available In-Vehicle Apps⁷

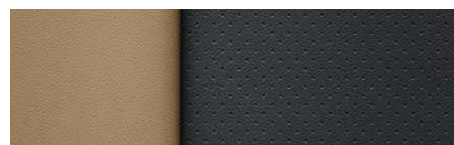
HD Rear Vision Camera¹



Jet Black Perforated Leather-Appointed Front Seating



Gideon Perforated Leather-Appointed Front Seating (shown)



Carhartt[®] Brown Perforated Leather Seating Surfaces⁸

INTERIOR (CONTINUED)

Keyless Open and Start

Media – two USB ports⁹ and SD card reader on instrument panel and two charge-only USB ports⁹ in second row

Memory – recalls two presets for power driver seat and exterior mirror settings

Power outlets – 120-volt (up to 400 watts, shared with cargo bed 120-volt outlet), on instrument panel; 12-volt auxiliary, rear

Remote vehicle starter system

Seat – rear 60/40 folding bench with underseat storage and center fold-out armrest with two cup holders (seatback storage included on Crew Cab)

Seats – heated, 10-way power driver and front outboard passenger seat adjusters with power lumbar control

SiriusXM[®] with 360L¹⁰ – All Access Package with 3-month trial subscription

Steering column – manual tilt/telescoping with electric theft-deterrent locking feature

Steering wheel – heated, leather-wrapped

Theft-deterrent system – unauthorized entry

¹ Read the vehicle Owner's Manual for important feature limitations and information. ² Chevrolet Infotainment System functionality varies by model. Full functionality requires compatible Bluetooth and smartphone, and USB connectivity for some devices. ³ Go to my.chevrolet.com/learnAbout/bluetooth to find out which phones are compatible with the vehicle. Full Bluetooth feature functionality varies by device, model and software version. ⁴ Vehicle user interface is a product of Apple and its terms and privacy statements apply. Requires compatible iPhone and data plan rates apply. ⁵ Vehicle user interface is a product of Google and its terms and privacy statements apply. Requires the Android Auto app on Google Play and a compatible Android smartphone. Data plan rates apply. You can check which smartphones are compatible at g.co/androidauto/requirements. ⁶ Functionality is subject to limitations and varies by vehicle, infotainment system and location. Select service plan required. Certain Alexa Skills require account linking to use. Amazon, Alexa and all related logos and motion marks are trademarks of Amazon.com, Inc., or its affiliates. Visit onstar.com for additional details. ⁷ Requires active service plan and paid AT&T vehicle data plan or compatible device with 3G/4G LTE tethering data plan. Visit onstar.com for details and limitations. ⁸ Requires available Carhartt Edition. ⁹ Not compatible with all devices. ¹⁰ If you decide to continue service after your trial, the subscription plan you choose will automatically renew thereafter and you will be charged according to your chosen payment method at then-current rates. Fees and taxes apply. See the SiriusXM Customer Agreement at siriusxm.com for complete terms and how to cancel. All fees, content, features and availability are subject to change. Certain features require a SiriusXM subscription and the Chevrolet Connected Access plan. See siriusxm.com and onstar.com for details and limitations.

LTZ & POPULAR EQUIPPED MODELS (CONTINUED)

Summit White (GAZ)

Iridescent Pearl Tricoat¹ (G1W)

Silver Ice Metallic (GAN)

Oxford Brown Metallic (GNK)

Red Hot (G7C)

Cherry Red Tintcoat¹ (GSK)

Northsky Blue Metallic (GA0)

Mosaic Black Metallic (GB8)

Black (GBA)



17" Painted-Steel Wheels
with Chrome Trim and Caps (PYW with P06)
Standard on 3500 HD LTZ DRW



17" Forged Polished-Aluminum Wheels (RS7)
Available on 3500 HD LTZ DRW



18" Machined-Aluminum Wheels
with Silver-Painted Accents (PYV)
Standard on 2500 HD LTZ and 3500 HD LTZ SRW



18" High-Gloss Black Aluminum Wheels (PTW)
Included on 2500 HD LTZ and 3500 HD LTZ SRW
with Midnight Edition or Z71 Sport Edition



20" 10-Spoke Machined-Aluminum Wheels
with Grazen Metallic-Painted Accents (Q86)
Included on 2500 HD LTZ with Carhartt® Edition



20" Black-Painted Aluminum Wheels
with Black Center Caps (NZD)
Available on 2500 HD LTZ and 3500 HD LTZ SRW
with Midnight Edition or Z71 Sport Edition



20" 6-Spoke Polished-Aluminum Wheels (RTH)
Available on 2500 HD LTZ and 3500 HD LTZ SRW;
included on 2500 HD LTZ and 3500 HD LTZ SRW with
Z71 Chrome Sport Edition

¹ Extra-cost color.

LTZ & POPULAR EQUIPPED MODELS (CONTINUED)



2500 HD CREW CAB LTZ Z71 PLUS 4x4

Popular Equipped Model includes:

Available Engine – Duramax 6.6L Turbo-Diesel V8

Assist steps – chrome, 4-inch round (dealer-installed)

LTZ Plus Package – LTZ Convenience Package (heated and ventilated front bucket seats, heated rear outboard seats, front center floor console with two USB ports¹, SD card reader and auxiliary input jack, power-sliding rear window, Universal Home Remote, power-up/-down tailgate with power lock and release, and LED cargo area lighting in pickup bed) and Safety Package² (Front and Rear Park Assist, Lane Change Alert with Side Blind Zone Alert and Rear Cross Traffic Alert)

Z71 Off-Road and Protection Package – Z71 Off-Road Package with Off-Road suspension and off-road tuned twin-tube shocks, Hill Descent Control, skid plates, Z71 fender badge (replaces standard 4x4 bed-mounted decal), Chevytec spray-on bedliner with logo, all-weather floor liners with Z71 logo, 20" 6-spoke polished-aluminum wheels (RTH) and LT275/65R20 all-terrain tires

POPULAR OPTIONS FOR CONSIDERATION

Gooseneck/5th Wheel Package – hitch platform to accept gooseneck or 5th-wheel hitch; includes hitch platform with tray to accept ball, stamped bed holes with removable caps installed and bed-mounted 7-pin trailer harness

Auxiliary Trailer Camera – camera, 59-foot wire and hardware (additional camera available from Chevrolet Accessories³)

2500 HD CREW CAB LTZ Z71 PREMIUM 4x4

Popular Equipped Model includes:

Available Engine – Duramax 6.6L Turbo-Diesel V8

Assist steps – chrome, 6-inch rectangular

LTZ Premium Package – 20" 6-spoke polished-aluminum wheels (RTH), LT275/65R20 all-terrain tires, LTZ Convenience Package (heated and ventilated front bucket seats, heated rear outboard seats, front center floor console with two USB ports¹, SD card reader and auxiliary input jack, power-sliding rear window, Universal Home Remote, power-up/-down tailgate with power lock and release, and LED cargo area lighting in pickup bed), LTZ Convenience Package II (Chevrolet Infotainment 3 Premium system⁴ with Navigation⁵, Bose premium 7-speaker sound system with Richbass subwoofer, Bed View Camera², HD Surround Vision² with two trailer camera provisions, and wireless charging⁶), Safety Package² (Front and Rear Park Assist, Lane Change Alert with Side Blind Zone Alert and Rear Cross Traffic Alert), Safety Package II² (Forward Collision Alert, Lane Departure Warning, Automatic Emergency Braking, IntelliBeam, Following Distance Indicator and Safety Alert Seat) and Technology Package (Rear Camera Mirror², Head-Up Display, and enhanced Driver Information Center with 8-inch diagonal multi-color configurable display and analog speedometer and tachometer)

Z71 Off-Road and Protection Package – Z71 Off-Road Package with Off-Road suspension and off-road tuned twin-tube shocks, Hill Descent Control, skid plates, Z71 fender badge (replaces standard 4x4 bed-mounted decal), Chevytec spray-on bedliner with logo and all-weather floor liners with Z71 logo

Sunroof – power

POPULAR OPTIONS FOR CONSIDERATION

Gooseneck/5th Wheel Package – hitch platform to accept gooseneck or 5th-wheel hitch; includes hitch platform with tray to accept ball, stamped bed holes with removable caps installed and bed-mounted 7-pin trailer harness

Auxiliary Trailer Camera – camera, 59-foot wire and hardware (additional camera available from Chevrolet Accessories³)

¹ Not compatible with all devices. ² Read the vehicle Owner's Manual for important feature limitations and information. ³ Chevrolet Accessories are dealer-installed and covered by the GM 3-year/36,000-mile (whichever comes first) New Vehicle Limited Warranty when ordered with your new Silverado. See your dealer for details. ⁴ Chevrolet Infotainment System functionality varies by model. Full functionality requires compatible Bluetooth and smartphone, and USB connectivity for some devices.

⁵ Map coverage available in the United States, Puerto Rico and Canada. ⁶ The system wirelessly charges one compatible mobile device. Some phones have built-in wireless charging technology and others require a special adaptor/back cover. To check for phone or other device compatibility, visit my.chevrolet.com/learn or consult your carrier.

HIGH COUNTRY & POPULAR EQUIPPED MODEL



HIGH COUNTRY

Available on 2500 HD and 3500 HD Crew Cab 4x4. In addition to or replacing LTZ features, High Country includes:

MECHANICAL

Exhaust – polished tip (6.6L V8 gas engine only)

EXTERIOR

Assist steps – chrome, 6-inch rectangular

Bedliner – Black Chevytec spray-on bedliner with High Country logo

Bumpers – body-color, front and rear

Cargo area lighting – LED, in pickup bed, key fob-activated

Grille – chrome front grille bar with Gold bowtie emblem and chrome grille inserts with Bronze accents

Recovery hooks¹ – chrome

Tailgate – power-up/-down with power lock and release

Tires – LT275/65R20 all-terrain (2500 HD and 3500 HD SRW)

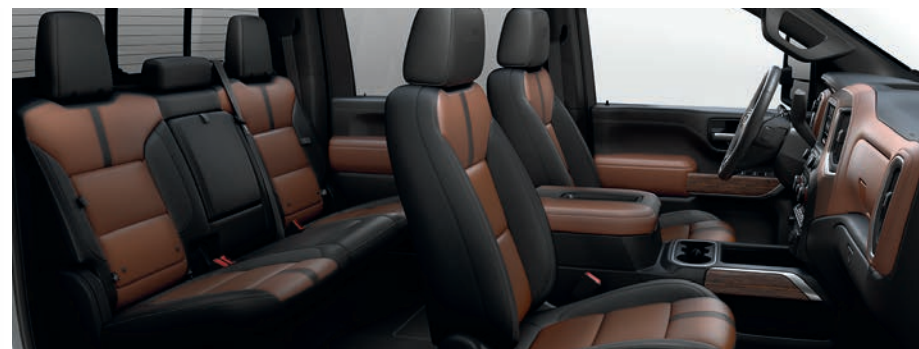
INTERIOR

Audio system – Bose premium 7-speaker sound system with Richbass subwoofer

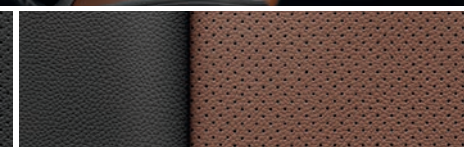
Bed View Camera²

Center console – floor-mounted console with cup holders, cell phone storage, power cord management and hanging file folder capability

Driver Information Center – enhanced 8-inch diagonal multi-color configurable display, includes analog speedometer and tachometer



Jet Black Perforated Leather Seating Surfaces



Jet Black/Umber Perforated Leather Seating Surfaces (shown)

INTERIOR (CONTINUED)

Entertainment – Chevrolet Infotainment 3 Premium system³ with Navigation⁴; 8-inch diagonal HD color touch-screen, AM/FM stereo, HD Radio,⁵ Bluetooth[®] audio streaming⁵ for two active devices, wireless Apple CarPlay^{®6} and wireless Android Auto^{™7} compatibility, available Alexa Built-In⁸; enhanced voice recognition, additional memory for available In-Vehicle Apps⁹ and Connected Navigation¹⁰

Floor mats – carpeted, front and rear

Front and Rear Park Assist²

HD Surround Vision² – with two trailer camera provisions

Lane Change Alert with Side Blind Zone Alert²

Media – two USB ports,¹¹ SD card reader and auxiliary input jack inside center floor console

Rear Cross Traffic Alert²

Seats – front bucket seats with center floor console

Seats – ventilated driver and front passenger, heated rear outboard seating positions

Universal Home Remote – programmable, includes garage door opener

Window – power-sliding rear window with defogger

Wireless charging¹²

¹ To avoid the risk of injury, never use recovery hooks to tow a vehicle. See the Owner's Manual for more information. ² Read the vehicle Owner's Manual for important feature limitations and information. ³ Chevrolet Infotainment System functionality varies by model. Full functionality requires compatible Bluetooth and smartphone, and USB connectivity for some devices. ⁴ Map coverage available in the United States, Puerto Rico and Canada. ⁵ Go to my.chevrolet.com/learnAbout/bluetooth to find out which phones are compatible with the vehicle. Full Bluetooth feature functionality varies by device, model and software version. ⁶ Vehicle user interface is a product of Apple and its terms and privacy statements apply. Requires compatible iPhone and data plan rates apply. ⁷ Vehicle user interface is a product of Google and its terms and privacy statements apply. Requires the Android Auto app on Google Play and a compatible Android smartphone. Data plan rates apply. You can check which smartphones are compatible at g.co/androidauto/requirements. ⁸ Functionality is subject to limitations and varies by vehicle, infotainment system and location. Select service plan required. Certain Alexa Skills require account linking to use. Amazon, Alexa and all related logos and motion marks are trademarks of Amazon.com, Inc., or its affiliates. Visit onstar.com for additional details. ⁹ Requires active service plan and paid AT&T vehicle data plan or compatible device with 3G/4G LTE tethering data plan. Visit onstar.com for details and limitations. ¹⁰ Connected Navigation and Real-time Points of Interest (POI) only available on properly equipped vehicles. Requires paid plan or trial. Map coverage available in the United States, Puerto Rico and Canada. Visit onstar.com for details and limitations. ¹¹ Not compatible with all devices. ¹² The system wirelessly charges one compatible mobile device. Some phones have built-in wireless charging technology and others require a special adaptor/back cover. To check for phone or other device compatibility, visit my.chevrolet.com/learn or consult your carrier.

HIGH COUNTRY & POPULAR EQUIPPED MODEL (CONTINUED)

Summit White (GAZ)

Iridescent Pearl Tricoat¹ (G1W)

Silver Ice Metallic (GAN)

Oxford Brown Metallic (GNK)

Cherry Red Tintcoat¹ (GSK)

Northsky Blue Metallic (GA0)

Mosaic Black Metallic (GB8)

Black (GBA)



17" Forged Polished-Aluminum Wheels (RS7)
Available on 3500 HD High Country DRW



20" 16-Spoke Polished-Aluminum Wheels (PYS)
Standard on 2500 HD High Country
and 3500 HD High Country SRW



2500 HD CREW CAB HIGH COUNTRY 4x4 Popular Equipped Model includes:

Available Engine – Duramax 6.6L Turbo-Diesel V8

High Country Deluxe – Safety Package II² (Forward Collision Alert, Lane Departure Warning, Automatic Emergency Braking, IntelliBeam, Following Distance Indicator and Safety Alert Seat), Technology Package (Rear Camera Mirror² and Head-Up Display) and Gooseneck/5th Wheel Package (hitch platform to accept gooseneck or 5th-wheel hitch; includes hitch platform with tray to accept ball, stamped bed holes with removable caps installed and bed-mounted 7-pin trailer harness)

Z71 Off-Road Package – Off-Road suspension with off-road tuned twin-tube shocks, Hill Descent Control and skid plates

Sunroof – power

POPULAR OPTIONS FOR CONSIDERATION

Assist steps – bright trim, power-retractable with foot-activated rearward articulation to provide bed access

Auxiliary Trailer Camera – camera, 59-foot wire and hardware (additional camera available from Chevrolet Accessories³)

¹ Extra-cost color. ² Read the vehicle Owner's Manual for important feature limitations and information. ³ Chevrolet Accessories are dealer-installed and covered by the GM 3-year/36,000-mile (whichever comes first) New Vehicle Limited Warranty when ordered with your new Silverado. See your dealer for details.

SPECIFICATIONS

● STANDARD ○ AVAILABLE – NOT AVAILABLE

	WT	CUSTOM	LT	LTZ	HIGH COUNTRY
MECHANICAL					
6.6L V8 gas engine with Variable Valve Timing (VVT) and Direct Injection and 6-speed heavy-duty transmission; 401 hp @ 5200 rpm, 464 lb.-ft. of torque @ 4000 rpm	●	●	●	●	●
Duramax 6.6L Turbo-Diesel V8 engine (B20 biodiesel-compatible) and Allison® 10-speed automatic transmission; 445 hp @ 2800 rpm, 910 lb.-ft. of torque @ 1600 rpm; includes exhaust brake, engine block heater and capped fuel filler (WT requires available integrated trailer brake controller; Regular Cab WT requires available WT Convenience Package)	○	○	○	○	○
Alternator: 170 amps, included with 6.6L V8 gas engine	●	●	●	●	●
220 amps, included with available Duramax 6.6L Turbo-Diesel V8 engine; available with 6.6L V8 gas engine	○	○	○	○	○
Dual, 220-amp primary and 170-amp auxiliary (requires available auxiliary battery with 6.6L V8 gas engine)	○	○	○	○	○
Battery: Auxiliary (requires 6.6L V8 gas engine with available 220-amp alternator or dual alternators)	○	○	○	○	○
High idle switch (not available with Power Takeoff; WT requires available cruise control)	○	○	○	○	○
Hitch Guidance ¹	●	●	●	●	●
Hitch Guidance with Hitch View ¹ (LT requires available Convenience Package II or Advanced Trailing Package)	–	–	○	●	●
Power Takeoff (WT requires available cruise control and Duramax 6.6L Turbo-Diesel V8 engine; LT requires available Duramax 6.6L Turbo-Diesel V8 engine)	○	–	○	–	–
Skid plates: Oil pan, front axle and transfer case (2500 HD and 3500 HD High Country SRW require available Z71 Off-Road Package or Snow Plow Prep/Camper Package)	○	○	○	○	○
Trailer brake controller: Integrated (Regular Cab WT requires available WT Convenience Package; Custom requires available Custom Convenience Package, Custom Value Package or Gooseneck/5th Wheel Package)	○	○	●	●	●
Trailer Tire Pressure Monitor Sensors: Set of four (LT requires available Convenience Package II or Advanced Trailing Package)	–	–	○	○	○
Trailer wiring provisions: For trailering with gooseneck or 5th-wheel trailer, includes additional 7-way wiring harness at the rear of the pickup bed	○	○	○	○	○
Transfer case: 2-speed, electronic with push-button controls (4x4 models)	●	●	●	–	–
2-speed, electronic active Autotrac with push-button controls (4x4 models)	–	–	○	●	●
Winter grille cover (requires available Duramax 6.6L Turbo-Diesel V8 engine)	○	–	○	○	○

	WT	CUSTOM	LT	LTZ	HIGH COUNTRY
EXTERIOR					
Assist steps: Chrome, 6-inch rectangular (Crew Cab)	–	–	○	○	●
Black, power-retractable with foot-activated rearward articulation to provide bed access (requires available Z71 Sport Edition, Midnight Edition or Carhartt® Edition)	–	–	–	○	–
Bright trim, power-retractable with foot-activated rearward articulation to provide bed access (LTZ requires available Z71 Chrome Sport Edition)	–	–	–	○	○
Bedliner: Chevytec spray-on with logo (bed only; tailgate has composite inner panel)	○	○	○	○	●
Bumpers: Black, front and rear	●	–	–	–	–
High-gloss, front and rear (LT and LTZ require available Midnight Edition)	–	●	○	○	–
Chrome, front and rear	○	–	●	●	–
Body-color, front and rear (LT requires available Z71 Chrome Sport Edition or Z71 Sport Edition; LTZ requires available Carhartt Edition, Z71 Chrome Sport Edition or Z71 Sport Edition)	–	–	○	○	●
Cargo area lighting: LED pickup bed, activated with switch in bed, instrument panel center switch bank or key fob	○	○	○	○	●
Door handles: Black, grained	●	●	–	–	–
High-gloss Black (requires available Midnight Edition or Z71 Sport Edition)	–	–	–	○	–
Body-color (LTZ requires available Carhartt Edition)	–	–	●	○	–
Chrome (LT requires available Z71 Chrome Sport Edition)	–	–	○	●	●
Fog lamps: LED (LT requires available Convenience Package)	–	–	○	●	●
Glass: Solar-absorbing tinted	●	–	–	–	–
Deep-tinted behind front doors (Double Cab and Crew Cab)	○	●	●	●	●
Headlamps: Halogen reflector headlamps and daytime running lamps	●	●	●	–	–
High-intensity LED reflector headlamps with LED signature curtain daytime running lamps (LT requires available Midnight Edition, Z71 Chrome Sport Edition or Z71 Sport Edition)	–	–	○	●	●
IntelliBeam: Automatic high beam on/off (requires available Safety Package II)	–	–	–	○	○
Mirror caps: Black	●	●	●	–	–
High-gloss Black (requires available Midnight Edition or Z71 Sport Edition)	–	–	○	○	–
Chrome (LT requires available Z71 Chrome Sport Edition)	–	–	○	●	●
Body-color (requires available Carhartt Edition)	–	–	–	○	–

¹ Read the vehicle Owner's Manual for important feature limitations and information.

SPECIFICATIONS (CONTINUED)

● STANDARD ○ AVAILABLE – NOT AVAILABLE

	WT	CUSTOM	LT	LTZ	HIGH COUNTRY
EXTERIOR (CONTINUED)					
Mirrors: Vertical trailinging, manual-adjustable, manual-folding and manual-extending with lower convex mirrors	●	–	–	–	–
Vertical trailinging, heated upper glass, power-adjustable, manual-folding and manual-extending with lower convex mirrors and integrated turn signal indicators (WT requires available WT Convenience Package)	○	●	●	–	–
Vertical trailinging, heated upper glass, auto-dimming driver side, power-adjustable, power-folding and manual-extending with lower convex mirrors and integrated turn signal indicators, puddle lamps, perimeter lighting and auxiliary lighting; includes interior auto-dimming rearview mirror (WT requires available WT Convenience Package; Custom requires available Custom Convenience Package; LT requires available Convenience Package or Advanced Trailing Package)	○	○	○	–	–
Vertical trailinging, heated and auto-dimming upper glass (driver and passenger), power-adjustable, power-folding and power-extending with lower convex mirrors, integrated turn signal indicators, puddle lamps, perimeter lighting and auxiliary lighting	–	–	–	●	●
Heated, power-adjustable, manual-folding, non-extending; passenger mirror has flat glass (WT requires available WT Convenience Package; 3500 HD LT requires SRW)	○	–	○	–	–
Moldings: Black window beltline (LTZ requires available Midnight Edition, Z71 Sport Edition or Carhartt® Edition)	●	●	●	○	–
Stainless steel window beltline (LT requires available Z71 Chrome Sport Edition)	–	–	○	●	●
Recovery hooks: ¹ Black	●	●	●	●	–
Chrome (LT requires available Duramax and Appearance Package)	–	–	○	–	●
Roof marker lamps: LED amber (standard on 3500 HD DRW models) ²	○	○	○	○	○
Tailgate: Manual lift	●	●	–	–	–
EZ Lift, includes power lock and release (WT requires available WT Convenience Package; Custom requires available Custom Convenience Package)	○	○	●	●	–
Power-up/-down with power lock and release (LT requires available Convenience Package II; LTZ requires available LTZ Convenience Package)	–	–	○	○	●
Taillamps: Incandescent	●	–	●	–	–
LED	–	●	–	●	●
Tires: LT245/75R17E all-season (2500 HD)	●	–	●	–	–
LT245/75R17E all-terrain (2500 HD)	○	–	○	–	–
LT235/80R17E all-season highway (3500 HD DRW)	●	●	●	●	●
LT235/80R17E all-terrain (3500 HD DRW)	○	○	○	○	○
LT275/70R18E all-terrain (2500 HD)	○	–	○	●	–
LT275/70R18 mud-terrain (2500 HD 4x4 models)	○	–	○	○	–
LT275/70R18E all-terrain (3500 HD SRW)	●	–	●	●	–
LT275/65R20 all-terrain (2500 HD and 3500 HD SRW; LT and LTZ require available 20" wheels)	–	●	○	○	●
Wheelhouse liners: Rear (LT requires available Convenience Package) (SRW models only)	–	–	○	●	●

	WT	CUSTOM	LT	LTZ	HIGH COUNTRY
SAFETY & SECURITY					
Airbags: ³ Dual-stage frontal airbags for driver and front outboard passenger; seat-mounted side-impact airbags for driver and front outboard passenger; head-curtain airbags for front and rear outboard seating positions; includes front outboard Passenger Sensing System for frontal outboard passenger airbag	●	●	●	●	●
Automatic Emergency Braking ⁴ (WT and Custom require available Safety Confidence Package; LTZ and High Country require available Safety Package II)	○	○	–	○	○
Following Distance Indicator ⁴ (requires available Safety Package II)	–	–	–	○	○
Forward Collision Alert ⁴ (WT and Custom require available Safety Confidence Package; LTZ and High Country require available Safety Package II)	○	○	–	○	○
Front and Rear Park Assist: ⁴ Ultrasonic (WT requires available WT Safety Package; LT and LTZ require available Safety Package)	○	–	○	○	●
Lane Change Alert with Side Blind Zone Alert ⁴ (WT requires available WT Safety Package; LT and LTZ require available Safety Package)	○	–	○	○	●
Lane Departure Warning ⁴ (requires available Safety Package II)	–	–	–	○	○
Rear Cross Traffic Alert ⁴ (WT requires available WT Safety Package; LT and LTZ require available Safety Package)	○	–	○	○	●
Rear Vision Camera ⁴	●	●	●	–	–
HD Rear Vision Camera ⁴ (LT requires available Convenience Package II or Advanced Trailing Package)	–	–	○	●	●
HD Surround Vision: ⁴ With two trailer camera provisions (LTZ requires available Convenience Package II)	–	–	–	○	●
Safety Alert Seat ⁴ (LTZ requires available Safety Package II or Carhartt Edition; High Country requires available Safety Package II)	–	–	–	○	○
Teen Driver technology	●	●	●	●	●
Theft-deterrent system: Unauthorized entry (LT requires available Convenience Package)	–	–	○	●	●
Tire Pressure Monitoring System: With Tire Fill Alert (does not monitor spare tire)	●	●	●	●	●
Up to 3 months of OnStar Safety & Security coverage ⁵ (WT requires available SiriusXM® All Access Package; Custom requires available Infotainment Package)	○	○	●	●	●

1 To avoid the risk of injury, never use recovery hooks to tow a vehicle. See the Owner's Manual for more information. **2** Restriction applies in California on 2500 HD and 3500 HD SRW models. See dealer for more information. **3** A NOTE ON CHILD SAFETY: Always use seat belts and the correct child restraint for your child's age and size, even with airbags. Even in vehicles equipped with the Passenger Sensing System, children are safer when properly secured in a rear seat in the appropriate infant, child or booster seat. Never place a rear-facing infant restraint in the front seat of any vehicle equipped with an active frontal airbag. See your vehicle Owner's Manual and the child safety seat instructions for more safety information. **4** Read the vehicle Owner's Manual for important feature limitations and information. **5** When you select a monthly plan within 30 days of activating your 1-month trial, you'll receive the next 2 months of the plan you select at no additional charge when you associate an approved payment method on file to your account and authorize recurring payments for your service plan. The amount and frequency of each recurring payment is based upon the service(s) and payment interval(s) you select from the options provided. After the trial expires, OnStar will automatically bill your payment method monthly at then-current standard monthly rates. Plans containing 4G LTE data will be billed every 30 days by AT&T. You may cancel at any time by pushing your blue OnStar button or calling 1-888-466-7827. May not be combined with other offers or retroactively applied. Offer subject to change. **6** If you decide to continue service after your trial, the subscription plan you choose will automatically renew thereafter and you will be charged according to your chosen payment method at then-current rates. Fees and taxes apply. See the SiriusXM Customer Agreement at siriusxm.com for complete terms and how to cancel. All fees, content, features and availability are subject to change.

SPECIFICATIONS (CONTINUED)

● STANDARD ○ AVAILABLE – NOT AVAILABLE

	WT	CUSTOM	LT	LTZ	HIGH COUNTRY
INTERIOR					
Air conditioning: Single-zone	●	●	●	–	–
Automatic, dual-zone (LT requires available Convenience Package)	–	–	○	●	●
Bed View Camera: ¹ Integrated with center high-mounted stop lamp; display located in auto-dimming rearview mirror (WT and Custom not available with Rear Camera Mirror; ¹ LT not available with Advanced Trailing Package, Bed View Camera ¹ with two trailer camera provisions, Convenience Package II or Rear Camera Mirror; ¹ LT requires standard Chevrolet Infotainment System ²) (Double Cab and Crew Cab)	○	○	○	–	–
Bed View Camera ¹ includes two trailer camera provisions; display located in Chevrolet Infotainment System ² screen (LT requires available Convenience Package II or Advanced Trailing Package) (Double Cab and Crew Cab)	–	–	○	○	●
Center console: Floor-mounted, with cup holders, cell phone storage, power cord management and hanging file holder capability (LT requires available front bucket seats; LTZ requires available LTZ Convenience Package)	–	–	○	○	●
Compass: Display in instrument cluster (WT and Custom require available OnStar ³)	○	○	●	●	●
Cruise control: Electronic with Set and Resume Speed, steering wheel-mounted	○	●	●	●	●
Defogger: Rear-window (Custom requires available Custom Convenience Package)	○	○	○	●	●
Driver Information Center: 3.5-inch diagonal monochromatic display	●	●	–	–	–
4.2-inch diagonal color display and driver personalization (WT and Custom require available Safety Confidence Package)	○	○	●	●	–
Enhanced 8-inch diagonal multi-color configurable display, includes analog speedometer and tachometer (LTZ requires available Technology Package)	–	–	–	○	●
Floor covering: Rubberized vinyl	●	–	○	–	–
Color-keyed carpeting; WT includes vinyl floor mats	○	●	●	●	●
Floor liners: Front and rear, with removable carpet inserts (not available on Regular Cab; requires available Chevytec spray-on bedliner with logo on LT and LTZ)	–	–	○	○	○
Head-Up Display: 15-inch diagonal multi-color (requires available Technology Package)	–	–	–	○	○
Keyless Open and Start (LT requires available Convenience Package)	–	–	○	●	●
Mirror: Rearview, manual day/night	●	●	●	–	–
Rearview, auto-dimming (WT, Custom and LT require available outside power-adjustable, power-folding and manual-extending vertical trailing mirrors)	○	○	○	●	●
Rearview, auto-dimming with partial video display of cargo bed (requires available Bed View Camera ¹) (Double Cab and Crew Cab)	○	○	○	–	–
Rear Camera Mirror ¹ (WT requires available WT Convenience Package; Custom requires available Custom Convenience Package; LT requires available Convenience Package or Advanced Trailing Package; LTZ and High Country require available Technology Package)	○	○	○	○	○

	WT	CUSTOM	LT	LTZ	HIGH COUNTRY
INTERIOR (CONTINUED)					
Power outlets: Front auxiliary, 12-volt	●	●	●	●	●
Rear auxiliary, 12-volt (LT requires available Convenience Package)	–	–	○	●	●
120-volt (400 watts shared), instrument panel- and bed-mounted (WT requires available WT Convenience Package; Custom requires available Custom Convenience Package; LT requires available Convenience Package II)	○	○	○	●	●
Remote Keyless Entry (WT requires available WT Convenience Package)	○	●	●	–	–
Remote vehicle starter system (Custom requires available Custom Convenience Package; LT requires available Convenience Package or Remote Start Package)	–	○	○	●	●
Steering column: Tilt-wheel manual steering column with security locking feature	●	●	●	–	–
Manual tilt/telescoping with electric theft-deterrent locking feature (LT requires available Convenience Package)	–	–	○	●	●
Steering wheel: Mounted cruise control	○	●	●	●	●
Mounted audio and phone controls (WT and Custom require available Safety Confidence Package)	○	○	●	●	●
Heated, leather-wrapped (LT requires available Convenience Package)	–	–	○	●	●
Sunroof: Power (Crew Cab) (LT requires available Convenience Package II; LTZ requires available LTZ Convenience Package)	–	–	○	○	○
Universal Home Remote: Programmable, includes garage door opener (LT requires available Convenience Package II; LTZ requires available LTZ Convenience Package)	–	–	○	○	●
Upfitter switches: Five 30-amp circuits for installation of aftermarket accessories ⁴	○	○	○	○	○
Window: Power-sliding rear with defogger (LT requires available Convenience Package II; LTZ requires available LTZ Convenience Package)	–	–	○	○	●
Windows: Manual (Regular Cab)	●	–	–	–	–
Power with driver express-up/-down, all others express-down (standard on Double Cab and Crew Cab; Regular Cab WT requires available WT Convenience Package)	○	●	●	–	–
Power with driver and front passenger express-up/-down, rear express-down	–	–	–	●	●
Wireless charging ⁵ (LTZ requires available LTZ Convenience Package II)	–	–	–	○	●

¹ Read the vehicle Owner's Manual for important feature limitations and information. ² Chevrolet Infotainment System functionality varies by model. Full functionality requires compatible Bluetooth and smartphone, and USB connectivity for some devices. ³ When you select a monthly plan within 30 days of activating your 1-month trial, you'll receive the next 2 months of the plan you select at no additional charge when you associate an approved payment method on file to your account and authorize recurring payments for your service plan. The amount and frequency of each recurring payment is based upon the service(s) and payment interval(s) you select from the options provided. After the trial expires, OnStar will automatically bill your payment method monthly at then-current standard monthly rates. Plans containing 4G LTE data will be billed every 30 days by AT&T. You may cancel at any time by pushing your blue OnStar button or calling 1-888-466-7827. May not be combined with other offers or retroactively applied. Offer subject to change. ⁴ Equipment from independent suppliers is not covered by the GM New Vehicle Limited Warranty. GM is not responsible for the safety or quality of independent supplier alterations. ⁵ The system wirelessly charges one compatible mobile device. Some phones have built-in wireless charging technology and others require a special adaptor/back cover. To check for phone or other device compatibility, visit my.chevrolet.com/learn or consult your carrier.

SPECIFICATIONS (CONTINUED)

● STANDARD ○ AVAILABLE – NOT AVAILABLE

	WT	CUSTOM	LT	LTZ	HIGH COUNTRY
SEATING					
Seat: Front 40/20/40 split-bench, includes covered storage armrest	●	●	●	–	–
Front 40/20/40 split-bench, includes covered storage armrest and lockable underseat storage (standard on Regular Cab LT; Double Cab and Crew Cab LT require available Convenience Package)	–	–	○	●	–
Front bucket seats with center floor console (Double Cab and Crew Cab) (LT requires available Convenience Package; LTZ requires available LTZ Convenience Package, LTZ Plus Package, LTZ Premium Package, LTZ Texas Edition or LTZ Premium Texas Edition)	–	–	○	○	●
Seats: Driver and front passenger 4-way manual adjusters	●	●	●	–	–
Driver 10-way power adjuster with power lumbar control (LT requires available Convenience Package)	–	–	○	●	●
Front passenger 10-way power adjuster with power lumbar control	–	–	–	●	●
Heated driver and front outboard passenger seats (LT requires available Convenience Package)	–	–	○	●	●
Heated rear outboard passenger seats (Crew Cab) (LTZ requires available LTZ Convenience Package)	–	–	–	○	●
Ventilated driver and front passenger seats (LTZ requires available LTZ Convenience Package)	–	–	–	○	●
ENTERTAINMENT					
Audio: 2-speaker system (Regular Cab)	●	–	●	–	–
6-speaker system (Double Cab and Crew Cab)	●	●	●	●	–
Bose premium 7-speaker audio system with Richbass subwoofer (LTZ requires available LTZ Convenience Package II)	–	–	–	○	●
Chevrolet Infotainment 3 system ¹ with 7-inch diagonal color touch-screen, AM/FM stereo, Bluetooth [®] audio streaming ² for two active devices, voice command pass-through to compatible phone, and Apple CarPlay ^{®3} and Android Auto ^{™4} compatibility	●	●	–	–	–
Chevrolet Infotainment 3 system ¹ with 8-inch diagonal color touch-screen, includes features listed above	–	–	●	–	–

	WT	CUSTOM	LT	LTZ	HIGH COUNTRY
ENTERTAINMENT (CONTINUED)					
Chevrolet Infotainment 3 Plus system ¹ with 8-inch diagonal HD color touch-screen, includes features listed previously, HD Radio [®] , wireless Apple CarPlay ^{®3} and wireless Android Auto ^{™5} compatibility, available Alexa Built-In ⁶ , voice recognition and available In-Vehicle Apps ⁷ (LT requires available Convenience Package II or Advanced Trailing Package)	–	–	○	●	–
Chevrolet Infotainment 3 Premium system ¹ with Navigation ⁸ , includes Plus system features listed above, enhanced voice recognition, additional memory for available In-Vehicle Apps ⁷ and available Connected Navigation ⁹ (LTZ requires available LTZ Convenience Package II)	–	–	–	○	●
Media: Two USB ports ¹⁰ on instrument panel	●	●	●	●	●
SD card reader on instrument panel (LT requires available Convenience Package II or Advanced Trailing Package)	–	–	○	●	–
Two USB ports ¹⁰ ; SD card reader and auxiliary input jack inside front center floor console (LT requires available bucket seats and Convenience Package)	–	–	○	○	●
SiriusXM ^{®11} – All Access Package with 3-month trial subscription (WT requires available OnStar ¹² ; Custom requires available Infotainment Package)	○	○	●	–	–
SiriusXM [®] with 360L ^{11,13} – All Access Package with 3-month trial subscription (LT requires available Convenience Package II or Advanced Trailing Package)	–	–	○	●	●
Available 4G LTE Wi-Fi ^{®14} Hotspot for up to seven devices, includes 1 month or 3 GB of data (whichever comes first) (WT and Custom require available OnStar ¹²)	○	○	●	●	●
Chevrolet Connected Access ¹⁵ with up to 10 years of standard connectivity, which currently enables features such as Vehicle Diagnostics and Dealer Maintenance Notification (WT and Custom require available OnStar ¹²)	○	○	●	●	●

¹ Chevrolet Infotainment System functionality varies by model. Full functionality requires compatible Bluetooth and smartphone, and USB connectivity for some devices. ² Go to my.chevrolet.com/learnAbout/bluetooth to find out which phones are compatible with the vehicle. Full Bluetooth feature functionality varies by device, model and software version. ³ Vehicle user interface is a product of Apple and its terms and privacy statements apply. Requires compatible iPhone and data plan rates apply. ⁴ Vehicle user interface is a product of Google and its terms and privacy statements apply. Requires the Android Auto app on Google Play and an Android compatible smartphone running Android 5.0 or higher. Data plan rates apply. ⁵ Vehicle user interface is a product of Google and its terms and privacy statements apply. Requires the Android Auto app on Google Play and a compatible Android smartphone. Data plan rates apply. You can check which smartphones are compatible at g.co/androidauto/requirements. ⁶ Functionality is subject to limitations and varies by vehicle, infotainment system and location. Select service plan required. Certain Alexa Skills require account linking to use. Amazon, Alexa and all related logos and motion marks are trademarks of Amazon.com, Inc., or its affiliates. Visit onstar.com for additional details. ⁷ Requires active service plan and paid AT&T vehicle data plan or compatible device with 3G/4G LTE tethering data plan. Visit onstar.com for details and limitations. ⁸ Map coverage available in the United States, Puerto Rico and Canada. ⁹ Connected Navigation and Real-time Points of Interest (POI) only available on properly equipped vehicles. Requires paid plan or trial. Map coverage available in the United States, Puerto Rico and Canada. Visit onstar.com for details and limitations. ¹⁰ Not compatible with all devices. ¹¹ If you decide to continue service after your trial, the subscription plan you choose will automatically renew thereafter and you will be charged according to your chosen payment method at then-current rates. Fees and taxes apply. See the SiriusXM Customer Agreement at siriusxm.com for complete terms and how to cancel. All fees, content, features and availability are subject to change. ¹² When you select a monthly plan within 30 days of activating your 1-month trial, you'll receive the next 2 months of the plan you select at no additional charge when you associate an approved payment method on file to your account and authorize recurring payments for your service plan. The amount and frequency of each recurring payment is based upon the service(s) and payment interval(s) you select from the options provided. After the trial expires, OnStar will automatically bill your payment method monthly at then-current standard monthly rates. Plans containing 4G LTE data will be billed every 30 days by AT&T. You may cancel at any time by pushing your blue OnStar button or calling 1-888-466-7827. May not be combined with other offers or retroactively applied. Offer subject to change. ¹³ Certain features require a SiriusXM subscription and the Chevrolet Connected Access plan. See siriusxm.com and onstar.com for details and limitations. ¹⁴ Service varies with conditions and location. Requires active service and paid AT&T data plan. Visit onstar.com for details and limitations. Availability subject to change. ¹⁵ Standard connectivity available only to original purchaser for up to 10 years. Connected Access services are subject to change. Does not include emergency or security services. Diagnostic capabilities vary by model and service plan. Message and data rates may apply. Requires contact method on file and enrollment to receive alerts. Not all issues will deliver alerts. Visit onstar.com for details and limitations.

AVAILABLE PACKAGES

● STANDARD ○ AVAILABLE – NOT AVAILABLE

	WT	CUSTOM	LT	LTZ	HIGH COUNTRY
MECHANICAL					
Advanced Trailering Package	–	–	○	●	●
Hitch Guidance with Hitch View ¹ ; Advanced Trailering System with Trailering App ² and Trailer Tire Pressure Monitoring System module, and HD Rear Vision Camera ³ ; LT includes Chevrolet Infotainment 3 Plus system ³ with 8-inch diagonal HD color touch-screen and SiriusXM [®] with 360L ⁴ All Access Package with 3-month trial subscription					
Max Trailering Package (3500 HD Regular Cab DRW 2WD)	○	–	–	–	–
Heavy-Duty Front Spring/Camper Package, 17" forged polished-aluminum wheels (RS7) and Gooseneck/5th Wheel Package; not available with pickup bed delete (requires available Duramax 6.6L Turbo-Diesel V8 engine, WT Convenience Package and integrated trailer brake controller; does not include Chevytec spray-on bedliner and pre-drilled hole covers)					
Snow Plow Prep/Camper Package (4x4 models)	○	○	○	○	○
Power feed for roof emergency light, pass-through dash grommet, 220-amp alternator and skid plates and increased front GAWR (not available with Heavy-Duty Front Spring/Camper Package) (LTZ requires available Chevytec spray-on bedliner with logo; 3500 HD High Country SRW requires available Z71 Off-Road Package)					
Alaskan Snow Plow Special Edition (4x4 models)	○	–	○	–	–
Snow Plow Prep/Camper Package, 18" high-gloss Black aluminum wheels (PTW), Chevytec spray-on bedliner with logo, roof marker lamps ⁵ and Alaskan decal (replaces standard 4x4 bed-mounted decal); LT includes rubberized-vinyl floor covering; 2500 HD WT and LT include LT275/70R18 mud-terrain tires					
Gooseneck/5th Wheel Package	○	○	○	○	–
Gooseneck/5th Wheel Prep Package; WT and Custom include integrated trailer brake controller and Chevytec spray-on bedliner with logo; LT includes Chevytec spray-on bedliner with logo; LTZ includes Chevytec spray-on bedliner with logo and Bed View Camera ¹ (Regular Cab WT requires available WT Convenience Package)					
Gooseneck/5th Wheel Prep Package	○	○	○	○	○
Hitch platform to accept gooseneck or 5th-wheel hitch; includes hitch platform with tray to accept ball, stamped bed holes with removable caps installed and bed-mounted 7-pin trailer harness (WT, Custom, LT and LTZ require available Gooseneck/5th Wheel Package)					
Heavy-Duty Front Spring/Camper Package (not available with Snow Plow Prep/Camper Package)	○	○	○	○	○
Z71 Off-Road Package (4x4 models)	○	–	○	○	○
Off-Road suspension with off-road tuned twin-tube Rancho [®] shocks, Hill Descent Control and skid plates; Z71 fender badge replaces standard 4x4 bed-mounted decal on WT, LT and LTZ; LT and LTZ include Z71 grille logo; 2500 HD WT and LT include LT265/70R17E all-terrain tires (not available on DRW models)					

	WT	CUSTOM	LT	LTZ	HIGH COUNTRY
EXTERIOR					
Carhartt [®] Edition (2500 HD Crew Cab 4x4)	–	–	–	○	–
Mosaic Black Metallic Chevrolet lettered grille bar, chrome grille inserts with Black Z71 badges, Black skid plate, Black beltline moldings, Black bowtie emblem on horn pad, body-color mirror caps, door handles, and front and rear bumpers, Black hood vent surround, Carhartt badging on doors and tailgate, exterior pinstriping in Carhartt Gold, Carhartt interior trim (including stitching and seat panels), Carhartt embroidered head restraints, all-weather floor liners with Carhartt logo, soft roll-up tonneau cover with Carhartt logo, roof marker lamps ⁵ ; 20" 10-spoke machined-aluminum wheels with Grazen Metallic-painted accents (Q86), LT275/65R20 all-terrain tires, Black Chevytec spray-on bedliner with logo, Safety Alert Seat ¹ and 4-inch round Black assist steps (dealer-installed) (not available in the state of California or with Midnight Edition, Z71 Off-Road and Protection Package, Z71 Chrome Sport Edition, Z71 Sport Edition, LTZ Premium Package, LTZ Texas Edition, LTZ Premium Texas Edition, pickup bed delete, any chrome assist steps or any accessory wheels) (requires available LTZ Plus Package, LTZ Convenience Package II, Safety Package II, Z71 Off-Road Package and Mosaic Black Metallic exterior color)					
Duramax and Appearance Package (2500 HD Crew Cab 4x4)	–	–	○	–	–
20" 10-spoke machined-aluminum wheels with Grazen Metallic-painted accents (Q86), LT275/65R20 all-terrain tires, chrome recovery hooks ⁶ and 4-inch round chrome assist steps (dealer-installed) (not available with Midnight Edition, Z71 Off-Road and Protection Package, Z71 Chrome Sport Edition, Z71 Sport Edition, pickup bed delete or any other assist steps) (requires available Duramax 6.6L Turbo-Diesel V8 engine)					
Midnight Edition (Crew Cab 4x4 models)	–	–	○	○	–
Black Chevrolet lettered grille bar, Black grille inserts, bowtie emblem and Z71 badge, Black skid plate, Black Silverado, trim level and tonnage badging, Black bowtie emblem on horn pad, Black hood vent surround, high-gloss Black-painted mirror caps and front and rear bumpers, 18" high-gloss Black aluminum wheels (PTW), LT275/70R18 mud-terrain tires, Chevytec spray-on bedliner with logo and 4-inch round Black assist steps (dealer-installed); LT includes high-intensity LED reflector headlamps, outside power-adjustable, power-folding and manual-extending vertical trailering mirrors with heated upper glass, auto-dimming driver side upper glass, puddle lamps, perimeter lighting and auxiliary lighting and interior auto-dimming rearview mirror; LTZ includes Black window beltline moldings and painted door handles (not available with Z71 Off-Road and Protection Package, Z71 Chrome Sport Edition, Z71 Sport Edition, pickup bed delete, any chrome assist steps or any accessory wheels; LT not available with Alaskan Snow Plow Special Edition or Texas Edition; LTZ not available with LTZ Premium Package, LTZ Texas Edition or LTZ Premium Texas Edition) (requires Black exterior color and Jet Black interior color; 3500 HD requires SRW; LT requires available All Star Edition and Z71 Off-Road Package; LTZ requires available LTZ Plus Package and Z71 Off-Road Package)					

¹ Read the vehicle Owner's Manual for important feature limitations and information. ² Available on select Apple and Android devices. Service availability, features and functionality vary by vehicle, vehicle equipment, trim level, device and the plan you are enrolled in. Some features may require a working electrical system. User terms apply. Device data connection required. Visit onstar.com for details and limitations. ³ Chevrolet Infotainment System functionality varies by model. Full functionality requires compatible Bluetooth and smartphone, and USB connectivity for some devices. ⁴ If you decide to continue service after your trial, the subscription plan you choose will automatically renew thereafter and you will be charged according to your chosen payment method at then-current rates. Fees and taxes apply. See the SiriusXM Customer Agreement at siriusxm.com for complete terms and how to cancel. All fees, content, features and availability are subject to change. Certain features require a SiriusXM subscription and the Chevrolet Connected Access plan. See siriusxm.com and onstar.com for details and limitations. ⁵ Restriction applies in California. See dealer for more information. ⁶ To avoid the risk of injury, never use recovery hooks to tow a vehicle. See the Owner's Manual for more information.

AVAILABLE PACKAGES (CONTINUED)

● STANDARD ○ AVAILABLE – NOT AVAILABLE

	WT	CUSTOM	LT	LTX	HIGH COUNTRY
EXTERIOR (CONTINUED)					
Z71 Off-Road and Protection Package (4x4 models)	–	–	○	○	–
Z71 Off-Road Package, Chevytec spray-on bedliner with logo and all-weather floor liners with Z71 logo; 2500 HD LT includes 18" machined-aluminum wheels with Silver-painted accents (PYV) and LTZ75/70R18E all-terrain tires; LTZ includes 20" 6-spoke polished-aluminum wheels (RTH) and LTZ75/65R20 all-terrain tires (not available on DRW models; LT requires Double Cab or Crew Cab)					
Z71 Chrome Sport Edition (Crew Cab 4x4 models)	–	–	○	○	–
Body-color Chevrolet lettered grille bar, Black mesh grille with chrome accents and Z71 badge, chrome skid plate, body-color front and rear bumpers, LTZ75/65R20 all-terrain tires and Chevytec spray-on bedliner with logo (available with Summit White or Black exterior colors; 3500 HD requires SRW); LT includes 20" 10-spoke machined-aluminum wheels with Grazen Metallic-painted accents (Q86), high-intensity LED reflector headlamps, outside power-adjustable, power-folding and manual-extending vertical trairling mirrors with heated upper glass, auto-dimming driver side upper glass, puddle lamps, perimeter lighting and auxiliary lighting, interior auto-dimming rearview mirror, stainless steel window beltline moldings, chrome door handles, mirror caps and hood vent, and 4-inch round chrome assist steps (dealer-installed); LTZ includes 20" 6-spoke polished-aluminum wheels (RTH) and 6-inch rectangular chrome assist steps (not available with Midnight Edition, Z71 Off-Road and Protection Package, Z71 Sport Edition, pickup bed delete or accessory wheels; LT not available with Alaskan Snow Plow Special Edition; LTZ not available with Carhartt® Edition, LTZ Premium Package or LTZ Premium Texas Edition) (LT requires available All Star Edition or Texas Edition and Z71 Off-Road Package; LTZ requires available LTZ Plus Package or LTZ Texas Edition and Z71 Off-Road Package)					
Z71 Sport Edition (Crew Cab 4x4 models)	–	–	○	○	–
Body-color Chevrolet lettered grille bar, Black grille inserts with Z71 badge, Black bowtie emblems, body-color front and rear bumpers, Black skid plate, Black Silverado, trim level and tonnage badging, Black bowtie emblem on horn pad, Black hood vent surround, high-gloss Black-painted mirror caps and door handles, 18" high-gloss Black aluminum wheels (PTW), LTZ75/70R18 mud-terrain tires, Chevytec spray-on bedliner with logo and 4-inch round Black assist steps (dealer-installed) (available with Summit White, Red Hot or Northsky Blue Metallic exterior colors); LT includes high-intensity LED reflector headlamps and outside power-adjustable, power-folding and manual-extending vertical trairling mirrors with heated upper glass, auto-dimming driver side upper glass, puddle lamps, perimeter lighting and auxiliary lighting and interior auto-dimming rearview mirror; LTZ includes Black window beltline moldings (not available with Midnight Edition, Z71 Off-Road and Protection Package, Z71 Chrome Sport Edition, pickup bed delete, any chrome assist steps or any accessory wheels; LT not available with Alaskan Snow Plow Special Edition or Texas Edition; LTZ not available with Carhartt Edition, LTZ Premium Package, LTZ Texas Edition or LTZ Premium Texas Edition) (requires Jet Black interior color; 3500 HD requires SRW; LT requires available All Star Edition and Z71 Off-Road Package; LTZ requires available LTZ Plus Package and Z71 Off-Road Package)					

	WT	CUSTOM	LT	LTX	HIGH COUNTRY
INTERIOR					
WT Convenience Package	○	–	–	–	–
Remote Keyless Entry, EZ Lift power lock and release tailgate, deep-tinted windows behind front doors, rear-window defogger, cruise control, and outside power-adjustable, manual-folding and manual-extending vertical trairling mirrors with heated upper glass, lower convex mirrors and integrated turn signal indicators; Regular Cab includes power windows with driver express-up/-down and passenger express-down and power door locks					
WT Safety Package	○	–	–	–	–
Front and Rear Park Assist ¹ , Lane Change Alert with Side Blind Zone Alert ¹ , Rear Cross Traffic Alert ¹ , and front and rear chrome bumpers (requires available WT Convenience Package, 120-volt bed- and instrument panel-mounted power outlets [400 watts shared], integrated trailer brake controller and outside power-adjustable, power-folding and manual-extending heated and auto-dimming vertical trairling mirrors)					
Custom Convenience Package	–	○	–	–	–
Remote vehicle starter system, rear-window defogger, LED cargo area lighting in pickup bed, EZ Lift power lock and release tailgate, and integrated trailer brake controller					
Custom Value Package	–	○	–	–	–
Custom Convenience Package, Infotainment Package, and outside power-adjustable, power-folding and manual-extending vertical trairling mirrors with heated upper glass, auto-dimming driver side upper glass, puddle lamps, perimeter lighting, auxiliary lighting and interior auto-dimming rearview mirror					
Infotainment Package	–	○	–	–	–
Up to 3 months of OnStar Safety & Security coverage ² , 4G LTE Wi-Fi ^{®3} Hotspot, Chevrolet Connected Access ⁴ , and SiriusXM ^{®5} All Access Package with 3-month trial subscription					
Rear Seat with Storage Package	–	○	○	–	–
Rear in-seatback left and right storage compartments and center fold-down armrest with cup holders					
Uplevel Rear Seat with Storage Package	–	–	○	●	●
Underseat storage, rear in-seatback left and right storage compartments and center fold-down armrest with cup holders (LT requires available Leather Package)					

¹ Read the vehicle Owner's Manual for important feature limitations and information. ² When you select a monthly plan within 30 days of activating your 1-month trial, you'll receive the next 2 months of the plan you select at no additional charge when you associate an approved payment method on file to your account and authorize recurring payments for your service plan. The amount and frequency of each recurring payment is based upon the service(s) and payment interval(s) you select from the options provided. After the trial expires, OnStar will automatically bill your payment method monthly at then-current standard monthly rates. Plans containing 4G LTE data will be billed every 30 days by AT&T. You may cancel at any time by pushing your blue OnStar button or calling 1-888-466-7827. May not be combined with other offers or retroactively applied. Offer subject to change. ³ Service varies with conditions and location. Requires active service and paid AT&T data plan. Visit onstar.com for details and limitations. Availability subject to change. ⁴ Standard connectivity available only to original purchaser for up to 10 years. Connected Access services are subject to change. Does not include emergency or security services. Diagnostic capabilities vary by model and service plan. Message and data rates may apply. Requires contact method on file and enrollment to receive alerts. Not all issues will deliver alerts. Visit onstar.com for details and limitations. ⁵ If you decide to continue service after your trial, the subscription plan you choose will automatically renew thereafter and you will be charged according to your chosen payment method at then-current rates. Fees and taxes apply. See the SiriusXM Customer Agreement at siriusxm.com for complete terms and how to cancel. All fees, content, features and availability are subject to change.

AVAILABLE PACKAGES (CONTINUED)

● STANDARD ○ AVAILABLE – NOT AVAILABLE

	WT	CUSTOM	LT	LTZ	HIGH COUNTRY
INTERIOR (CONTINUED)					
Convenience Package	–	–	○	–	–
Dual-zone automatic climate control, 10-way power driver-seat adjuster with power lumbar control, heated driver and front outboard passenger seats, heated leather-wrapped steering wheel, manual tilt/telescoping steering column with security locking feature, rear-window defogger, Keyless Open and Start, remote vehicle starter system, unauthorized entry theft-deterrent system, LED cargo area lighting in pickup bed, LED fog lamps, and rear wheelhouse liners on SRW models; Double Cab and Crew Cab include front 40/20/40 split-bench seat with underseat storage, two charge-only USB ports ¹ in second row, and rear 12-volt auxiliary power outlet					
Convenience Package II	–	–	○	–	–
Instrument panel-mounted 120-volt power outlet and bed-mounted 120-volt power outlet (400 watts shared), Chevrolet Infotainment 3 Plus system ² with available In-Vehicle Apps ³ ; HD Radio [®] SiriusXM [®] with 360L ⁴ All Access Package with 3-month trial subscription, SD card reader, HD Rear Vision Camera ⁵ ; Hitch Guidance with Hitch View ⁵ and Advanced Trailering System; Double Cab and Crew Cab include Universal Home Remote and power-sliding rear window; Crew Cab includes Cloth Rear Seat with Storage Package (requires available Convenience Package and power-up/-down tailgate with power lock and release)					
Leather Package (Double Cab and Crew Cab)	–	–	○	–	–
Jet Black or Gideon leather-appointed front seats; Crew Cab includes Uplevel Rear Seat with Storage Package (requires available Convenience Package II)					
Remote Start Package	–	–	○	–	–
Remote vehicle starter system and rear-window defogger					
All-Star Edition (Double Cab and Crew Cab)	–	–	○	–	–
Convenience Package and Safety Package					
Texas Edition (Double Cab and Crew Cab)	–	–	○	–	–
Convenience Package, Safety Package and Texas Edition badging (available only in Texas and surrounding states)					
Safety Confidence Package	○	○	–	–	–
Automatic Emergency Braking ⁵ ; Forward Collision Alert ⁵ ; steering wheel-mounted audio and phone controls, and Driver Information Center with 4.2-inch diagonal color display; WT includes cruise control (not available with pickup bed delete)					
Safety Package⁵	–	–	○	○	–
Front and Rear Park Assist, Lane Change Alert with Side Blind Zone Alert and Rear Cross Traffic Alert (LT requires available Convenience Package and outside power-adjustable, power-folding and manual-extending vertical trailering mirrors with heated upper glass, auto-dimming driver side upper glass, puddle lamps, perimeter lighting and auxiliary lighting)					

	WT	CUSTOM	LT	LTZ	HIGH COUNTRY
INTERIOR (CONTINUED)					
LTZ Convenience Package	–	–	–	○	–
Heated and ventilated front bucket seats, front center floor console with USB ports ¹ ; SD card reader and auxiliary input jack, power-sliding rear window, Universal Home Remote, power-up/-down tailgate with power lock and release, and LED cargo area lighting in pickup bed; Crew Cab includes heated rear outboard seats					
LTZ Convenience Package II	–	–	–	○	–
Chevrolet Infotainment 3 Premium system ² with Navigation ⁵ and additional memory for available In-Vehicle Apps ³ ; 7-speaker Bose premium audio system with Richbass subwoofer, HD Surround Vision ⁵ with two trailer camera provisions, Bed View Camera ⁵ and wireless charging ⁷ (requires available LTZ Convenience Package and Safety Package)					
LTZ Plus Package	–	–	–	○	–
LTZ Convenience Package and Safety Package (not available with LTZ Premium Package, LTZ Texas Edition or pickup bed delete)					
LTZ Premium Package	–	–	–	○	–
LTZ Convenience Package, LTZ Convenience Package II, Safety Package, Safety Package II, Technology Package, 20" 6-spoke polished-aluminum wheels (RTH) and LT275/65R20 all-terrain tires (not available with LTZ Plus Package, LTZ Texas Edition or pickup bed delete; not available on DRW models)					
LTZ Texas Edition	–	–	–	○	–
LTZ Convenience Package, Safety Package and Texas Edition badging (available only in Texas and surrounding states; not available with LTZ Plus Package, LTZ Premium Package or pickup bed delete)					
LTZ Premium Texas Edition	–	–	–	○	–
LTZ Convenience Package, LTZ Convenience Package II, Safety Package, Safety Package II, Technology Package, 20" 6-spoke polished-aluminum wheels (RTH), LT275/65R20 all-terrain tires and Texas Edition badging (available only in Texas and surrounding states; not available with LTZ Plus Package, LTZ Premium Package, LTZ Texas Edition or pickup bed delete; not available on DRW models)					
Safety Package II⁵	–	–	–	○	○
Forward Collision Alert, Lane Departure Warning, Automatic Emergency Braking, IntelliBeam, Following Distance Indicator and Safety Alert Seat (LTZ requires available Safety Package)					
Technology Package	–	–	–	○	○
Rear Camera Mirror ⁵ and Head-Up Display; LTZ includes enhanced Driver Information Center (not available with pickup bed delete) (LTZ requires available LTZ Convenience Package II and Safety Package II; High Country requires available Safety Package II)					
High Country Deluxe	–	–	–	–	○
Safety Package II, Technology Package and Gooseneck/5th Wheel Package					

¹ Not compatible with all devices. ² Chevrolet Infotainment System functionality varies by model. Full functionality requires compatible Bluetooth and smartphone, and USB connectivity for some devices. ³ Requires active service plan and paid AT&T vehicle data plan or compatible device with 3G/4G LTE tethering data plan. Visit onstar.com for details and limitations. ⁴ If you decide to continue service after your trial, the subscription plan you choose will automatically renew thereafter and you will be charged according to your chosen payment method at then-current rates. Fees and taxes apply. See the SiriusXM Customer Agreement at siriusxm.com for complete terms and how to cancel. All fees, content, features and availability are subject to change. Certain features require a SiriusXM subscription and the Chevrolet Connected Access plan. See siriusxm.com and onstar.com for details and limitations. ⁵ Read the vehicle Owner's Manual for important feature limitations and information. ⁶ Map coverage available in the United States, Puerto Rico and Canada. ⁷ The system wirelessly charges one compatible device. Some phones have built-in wireless charging technology and others require a special adaptor/back cover. To check for phone or other device compatibility, see my.chevrolet.com/learn or consult your carrier.

DIMENSIONS

	REGULAR CAB	DOUBLE CAB	CREW CAB
Length	235.5"	240.4"-256.5"	250.0"-266.0"
Wheelbase	141.5"	149.4"-162.5"	158.9"-172.0"
Height	79.9"-80.9"	79.8"-80.9"	79.7"-80.9"
Width	81.8"-96.8"	81.9"-96.8"	81.9"-96.8"

	REGULAR CAB	DOUBLE CAB	CREW CAB
Head Room (front/rear)	43.1"/-	43.0"/39.9"	43.0"/40.1"
Leg Room (front/rear)	44.5"/-	44.5"/35.2"	44.5"/43.4"
Shoulder Room (front/rear)	66.1"/-	66.0"/64.9"	66.0"/65.3"
Hip Room (front/rear)	60.9"/-	61.2"/60.2"	61.2"/60.2"

MAXIMUM CAPACITIES

	REGULAR CAB	DOUBLE CAB	CREW CAB
Fuel tank	36 gallons	36 gallons	36 gallons
(approximate)	28 gallons (Diesel)	29 gallons (Standard Bed Diesel)	

Cargo volume ¹	69.6 cubic feet (Standard Bed) 83.5 cubic feet (Long Bed)
---------------------------	--



Enroll. It's quick, it's easy and there is no cost to join. You will automatically receive points just for enrolling.² To enroll, visit mychevroletrewards.com.

Earn. Earn points on eligible new vehicle leases or purchases, which can be redeemed toward accessories,³ vehicle service and more. Plus, get points for paid service,⁴ select OnStar[®] and Connected Services plans,⁵ and many others.

Enjoy. Use points toward eligible accessories,³ paid service, eligible new vehicles⁶ and more. It's our way of saying thanks!



First oil change is covered.⁷ Experience Chevrolet Complete Care, a comprehensive coverage, limited warranty and protection program that comes standard with every new 2021 Chevrolet Silverado HD lease and purchase.

Simply, it is designed around you, to make it easy to help keep your Chevrolet like new — and give you the confidence you deserve. For more information, visit chevrolet.com/complete-care.

NEW VEHICLE LIMITED WARRANTY

Chevrolet will warrant each 2021 Silverado HD with:

3-year/36,000-mile⁸ Bumper-to-Bumper Limited Warranty.

6 years/100,000 miles⁸ of Rust-Through Protection.

5-year/60,000-mile⁸ Powertrain Limited Warranty.

5-year/100,000-mile⁸ Diesel Limited Warranty (when equipped with a Duramax 6.6L Turbo-Diesel V8 engine).

5 years/60,000 miles⁸ of Roadside Assistance⁹ and Courtesy Transportation.

¹ Cargo and load capacity limited by weight and distribution. ² Must be 18 years or older. Points may be earned and redeemed only at participating GM entities, dealers or third party retailers in the United States (excluding Puerto Rico, the U.S. Virgin Islands or Guam). Points are not earned on taxes or certain fees, and expire 5 years from when points are earned. Some restrictions apply. For more information, please view full program Terms & Conditions. ³ Members may use the voucher on eligible Chevrolet, Buick, GMC and Cadillac Accessories purchased through a participating dealership. Voucher must be used by expiration date noted. Any unused amount of the voucher will be forfeited. ⁴ Excludes taxes, fees and body shop repair orders. It could take up to 15 days for points to post to your account. ⁵ Connected vehicle services vary by vehicle model and require working electrical system, cell reception and GPS signal. Requires active service plan. OnStar links to emergency services. Visit onstar.com for details and limitations. ⁶ Not compatible with some other offers, including the GM Employee Discount programs. Excludes 2020 Chevrolet Corvette. Dealer contribution may affect final consumer cost. ⁷ Maintenance visit must occur within first year of vehicle delivery. Service visit consists of ACDelco dexos1™ Full Synthetic Oil and Filter Change/Tire Rotation/MPVI. Does not include air filters. See participating dealer for other restrictions and complete details. ⁸ Whichever comes first. See dealer for details. ⁹ Roadside service provided by Allstate Roadside Services. Limitations apply.

IMPORTANT INFORMATION

Chevrolet Owner Center (my.chevrolet.com). Everything you need to know. Anything you need to do. Your Chevrolet Owner Center makes it easy. Create your account today to get the most out of your new vehicle. Get special alerts and offers, schedule service, review your maintenance schedule, and view how-to videos specifically for your vehicle. All online, anytime. Visit the Owner Center today to register or take a tour.

Engines. Chevrolet products are equipped with engines produced by GM Global Propulsion Systems or other suppliers to GM worldwide. The engines in Chevrolet products may also be used in other GM makes and models.

Assembly. Chevrolet vehicles and their components are assembled or produced by different operating units of General Motors, its subsidiaries or suppliers to GM worldwide. We sometimes find it necessary to produce Chevrolet vehicles with different or differently sourced components than originally scheduled. Since some options may be unavailable when your vehicle is assembled, we suggest you verify that your vehicle includes the equipment you ordered and that, if there were changes, they are acceptable to you.

Chevrolet Connected Services and OnStar. Connected vehicle services vary by vehicle model and require an active service plan, working electrical system, cell reception and GPS signal. OnStar links to emergency services. Visit onstar.com for details and limitations.

A note on child safety. Always use seat belts and the correct child restraint for your child's age and size, even with airbags. Even in vehicles equipped with the Passenger Sensing System, children are safer when properly secured in a rear seat in the appropriate infant, child or booster seat. Never place a rear-facing infant restraint in the front seat of any vehicle equipped with an active frontal airbag. See your vehicle Owner's Manual and the child safety seat instructions for more safety information.

Important words about this catalog. We have tried to make this catalog comprehensive and factual. We reserve the right, however, to make changes at any time, without notice, in prices, colors, materials, equipment, specifications, models and availability. Specifications, dimensions, measurements, ratings and other numbers in this catalog

and other printed materials provided at the dealership or affixed to vehicles are approximations based on design and engineering drawings, prototypes and laboratory tests. Your vehicle may differ due to variations in manufacture and equipment. Since some information may have been updated since the time of printing, please check with your Chevrolet dealer for complete details. Chevrolet reserves the right to lengthen or shorten the model year for any product for any reason or to start and end model years at different times. Certain vehicle features may lose their usefulness over time due to obsolescence from technological changes. Unless otherwise noted, all claims based on GM Large Pickup segment and latest available competitive information. Excludes other GM vehicles.

Fleet orders. Some standard content may be deleted on fleet orders. See dealer for details.

Chevrolet ownership experience. Chevrolet is committed to enhancing the vehicle shopping and ownership experience through a wide array of programs. Visit chevrolet.com to build and price, find a vehicle, request a quote, compare vehicles, find financial tools or track your vehicle order. You'll also find information about 24-hour Roadside Assistance, Courtesy Transportation, Customer Assistance, GM Mobility, safety and current incentives.

Chevrolet.com/safety. Chevrolet is committed to helping keep you and your family safe — from the start of your journey to your destination. That's why Chevrolet vehicles offer standard and available safety and security features to help give you peace of mind.

GMmobility.com (1-800-323-9935). GM MobilitySM offers financial assistance for eligible adaptive equipment to make automotive travel easier for persons with disabilities or special transportation needs. To learn more about special GM Mobility offers, visit gmmobility.com.

The BuyPower Card. The Chevrolet BuyPower Card — Every purchase you make with the BuyPower Card from Capital One* helps you earn toward an eligible new Chevrolet, Buick, GMC or Cadillac vehicle. There's no limit on the amount you can earn or redeem, and your Earnings don't expire. Visit chevroletbuypowercard.com/catalogs.

* Capital One, N.A. is the issuer of the BuyPower Card. General Motors ("GM") is responsible for the operation and administration of the Earnings program.



GM, the GM logo, Chevrolet, the Chevrolet logo, and the slogans, emblems, vehicle model names, vehicle body designs and other marks appearing in this catalog are the trademarks and/or service marks of General Motors, its subsidiaries, affiliates or licensors. ©2021 OnStar LLC. All rights reserved. Sirius, XM, SiriusXM and all related marks and logos are trademarks of Sirius XM Radio Inc. The Bluetooth word mark is a registered trademark owned by Bluetooth SIG, Inc., and any use of such mark by Chevrolet is under license. Bose and Richbass are registered trademarks of the Bose Corp.

©2021 General Motors. All rights reserved. January 2021

FIND NEW ROADS™

CHEVROLET.COM

