

2021 Hyundai

# SANTA FE





# You're always on the move. And so is Santa Fe.



<sup>1</sup>For more information, visit Kelley Blue Book's KBB.com. Kelley Blue Book is a registered trademark of Kelley Blue Book Co., Inc. <sup>2</sup>2020 model-year vehicle's projected cost to own for the initial five-year ownership period is based on the average Kelley Blue Book 5-Year Cost to Own data, which considers depreciation and costs such as fuel and insurance. For more information, visit KBB.com. <sup>3</sup>Remote Smart Parking Assist (RSPA) can help remotely park your vehicle. RSPA may not function correctly if one or more of the parking sensors is damaged, dirty or covered, or if weather conditions (heavy rain, snow or fog) interfere with sensor operation. Always inspect the parking area with your own eyes. See Owner's Manual for further details and limitations. <sup>4</sup>Santa Fe Calligraphy with 20" wheels shown - 19" wheels are standard on a limited number of Santa Fe Calligraphy vehicles, while 20" wheels are standard on most Calligraphy Santa Fe vehicles. See your Hyundai dealer for further details and availability. <sup>5</sup>Trailer Sway Control can help stabilize the vehicle when it detects that the trailer is swaying or oscillating due to various weather and road conditions. When the system detects some trailer sway, the front and rear brakes can be applied automatically, and engine power can be reduced, to help stabilize the trailer. See Owner's Manual for further details and limitations.

SANTA FE Calligraphy with 20" wheels in Quartz White<sup>4</sup>

You'd think that after Kelley Blue Book named the 2020 Hyundai Santa Fe a KBB.com Best Buy<sup>1</sup> and the lowest 5-Year Cost to Own of any 2-row midsize SUV,<sup>2</sup> our popular SUV could rest on its laurels. But that kind of thinking never pencils at Hyundai.

Instead, our designers moved the award-winning Santa Fe a bold step ahead. The 2021 model features a wider, more aggressive front grille framed by dazzling new LED lighting. Under the hood, two new and more powerful engines deliver silky-smooth performance with enhanced towing capabilities. The new Santa Fe also adds innovations like Remote Smart Parking Assist.<sup>3</sup> And Santa Fe is available with the sure-footed traction of HTRAC All Wheel Drive.

Inside, premium soft-touch materials and ambient lighting give the all-new interior – punctuated by a high center console and available digital instrument cluster – a modern, sophisticated feel. Santa Fe engineers refuse to stand still when it comes to safety features as well. Hyundai SmartSense, already one of the most robust suites of safety tech in the industry, now offers even more confidence-inspiring driver assist functionality for 2021.

All of which makes the new Hyundai Santa Fe the perfect way to keep you and your family on the move in safety and style.



## Tow Now Know-How

Have some toys you want to tow? No problem. Santa Fe Calligraphy and Limited come equipped with a trailer prep package and a towing capacity of up to 3,500 pounds with trailer brakes. When sway is detected, the Trailer Sway Control system automatically applies braking to the appropriate wheels and reduces engine power to stabilize the vehicle.<sup>5</sup>

## Easy Does It

The new Santa Fe is available with Remote Smart Parking Assist, which makes it easier to negotiate tight spots. Just press a button on your Smart Key, and Santa Fe can drive itself into a parking space – and pull out of one, too.





**2020 IIHS Top Safety Pick**  
2020 Hyundai Santa Fe when equipped with LED headlights<sup>5</sup>



**2020 5-Star Overall Safety Rating<sup>6</sup>**

<sup>1</sup>View U.S. News Best Cars at cars.usnews.com. <sup>2</sup>Highway Driving Assist (HDA) is for highway use only and helps keep your car centered in its lane while maintaining a set distance from the vehicle ahead. Lane markings must be clearly visible on the road. HDA should not be used in poor weather, heavy or varying traffic, or on winding or slippery roads. HDA will not work under all circumstances and will not prevent loss of control. Driver remains responsible to slow or stop the car to avoid a collision. Smart Cruise Control with Stop & Go (SCC) is not a collision-avoidance or warning device. SCC is for highway use only and should not be used in poor weather, heavy or varying traffic, or on winding or slippery roads. The driver remains responsible for slowing or stopping the vehicle to avoid a collision. SCC initiates a full stop when the traffic ahead stops and reengages if the vehicle ahead moves forward within 3 seconds. See Owner's Manual for further details and limitations. <sup>3</sup>Forward Collision-Avoidance Assist (FCA) with Pedestrian and Cyclist Detection helps detect pedestrians and cyclists, but not in all conditions. FCA is designed to assist drivers to avoid, or reduce the severity of, collisions with cars that have slowed or stopped in front of them. The system is not designed to detect certain stationary objects such as trees or poles, and may not detect all vehicles, pedestrians or cyclists under certain road, weather or vehicle conditions. It is a supplemental assist and does not replace the need for extreme care and attention by the driver. FCA may not stop the vehicle completely and will not avoid all collisions. The driver is responsible for being attentive and maintaining control of the vehicle, and should not wait for the system's alerts before braking as there may not be sufficient time to brake safely. See Owner's Manual for details and limitations. <sup>4</sup>Safety features vary by model. For details, refer to the Features chart in the back of this brochure or visit HyundaiUSA.com. <sup>5</sup>To qualify for 2020 TOP SAFETY PICK, a vehicle must earn good ratings in the driver-side and passenger-side small overlap front, moderate overlap front, side, roof strength and head restraint tests. It also must earn an advanced or superior rating for vehicle-to-vehicle and vehicle-to-pedestrian front crash prevention, and an acceptable or good headlight rating. <sup>6</sup>Government 5-Star Safety Ratings are part of the National Highway Traffic Safety Administration's (NHTSA) New Car Assessment Program (safercar.gov). <sup>7</sup>Santa Fe Calligraphy with 20" wheels shown – 19" wheels are standard on a limited number of Santa Fe Calligraphy vehicles, while 20" wheels are standard on most Calligraphy Santa Fe vehicles. See your Hyundai dealer for further details and availability.

SANTA FE Calligraphy with 20" wheels in Quartz White<sup>7</sup>

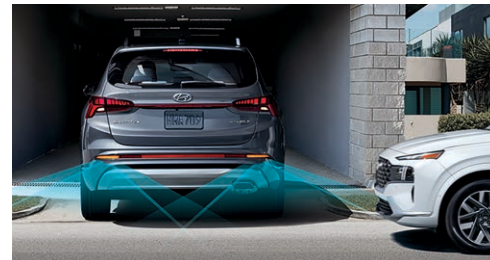
## How the best gets even better.

The 2020 Santa Fe was named "Best 2-Row SUV for the Money" by *U.S. News & World Report*.<sup>1</sup> So how do you top that? We started by offering the 2021 Santa Fe with a choice of two new Smartstream engines – a 2.5L 4-cylinder with an electronic 8-speed automatic transmission, and a turbocharged version with a new electronic 8-speed Dual Clutch Transmission.

A Drive Mode Select knob on the restyled center console lets you choose your preferred driving dynamic. Select Smart mode for more fuel-efficient driving. Prefer a fun-to-drive feel with more aggressive throttle response and shift points? Choose Sport mode. Or leave it in Normal mode for a balance of Santa Fe's finely tuned performance qualities.

Whatever mode you choose, you'll be making a safe choice. That's because the 2021 Santa Fe features enhancements to Hyundai SmartSense, our suite of advanced safety innovations. Available Highway Driving Assist works with navigation-based Smart Cruise Control to help maintain a set distance from the vehicle ahead while keeping your Santa Fe centered in its lane.<sup>2</sup> It also adjusts the cruising speed you set automatically whenever you enter a speed-controlled zone or approach a curved section of road.

Even Santa Fe's Forward Collision-Avoidance Assist is smarter for 2021. It now helps prevent collisions with pedestrians, cyclists and both oncoming or slowed vehicles.<sup>3</sup> Feels better just reading about it all, doesn't it?



Rear Cross-Traffic Collision-Avoidance Assist



Available HTRAC All Wheel Drive

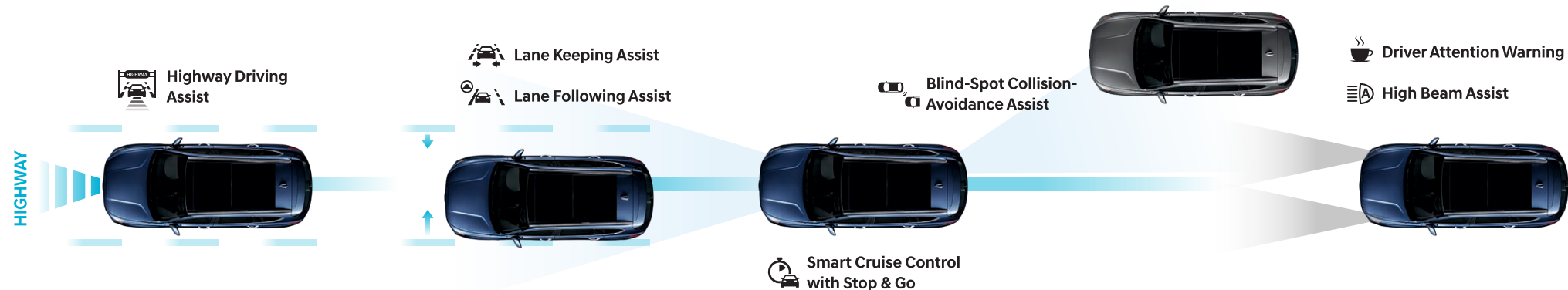


Forward Collision-Avoidance Assist with Pedestrian, Cyclist, and Junction-Turning Detection



Blind-Spot View Monitor

### Hyundai SmartSense Technologies<sup>4</sup>







\*The hands-free smart liftgate will open when your Proximity Key is within 3 feet of the detection area for at least 3 seconds. Radio transmitters and other vehicle smart keys may interfere with normal operation. See Owner's Manual for further details and limitations.

SANTA FE Calligraphy in Coquina Beige Nappa Leather

# The SUV, highly-evolved.

There's no question the new Santa Fe is filled with modern luxuries. Available comfort features include heated and ventilated front seats, heated rear seats, and dual automatic temperature control with a CleanAir Ionizer. Available convenience features include a 10.25" split-screen navigation display that serves up a wide range of infotainment at the sound of your voice via Dynamic Voice Recognition.

For 2021, Santa Fe offers a new Calligraphy trim that elevates SUV design to an art form. Distinctive wheels and premium design features are complimented by quilted Nappa leather seats and a color Heads-up Display that projects vital driving data on the windshield in fighter jet fashion.

Of course, Santa Fe never forgets the fundamental reason for being an SUV in the first place – versatility. Easy-to-fold 60/40 split rear seats with power release buttons available in the cargo area create a cavernous space accessible via an available hands-free smart liftgate.<sup>1</sup> Whether you need to ferry five passengers in spacious comfort, carry a full cargo load or configure the interior for a combination of people and possessions, Santa Fe knows the drill. After all, our iconic SUV is now in its second decade of design evolution.



12.3" digital LCD instrument cluster



10.25" touchscreen navigation display



Power panoramic sunroof



Ambient interior lighting



# Remote access. Seamless connectivity.

What Hyundai offers its owners goes beyond our vehicles. It includes the Blue Link® Connected Car System,<sup>1</sup> a range of innovative features that deliver remarkable digital connectivity between you and your vehicle.

If you're like most Hyundai owners, the Blue Link features you'll use most often are its remote capabilities. With the MyHyundai app, you can start your Santa Fe's engine and adjust the climate controls from your office or kitchen using your smartphone, Amazon Echo® or Google Home™ virtual assistant.<sup>2</sup> You can also remotely activate Santa Fe's available heated/ventilated front seats and check to see if you've left a window open by consulting your smartphone.<sup>3</sup>

Download the Hyundai Digital Key to your compatible Android™ smartphone, and you can use it to unlock your Santa Fe's front doors and start the engine.<sup>4</sup> Digital keys can be assigned to multiple drivers, who can instantly retrieve their personalized radio presets, instrument cluster display preferences and side mirror/driver seat settings.

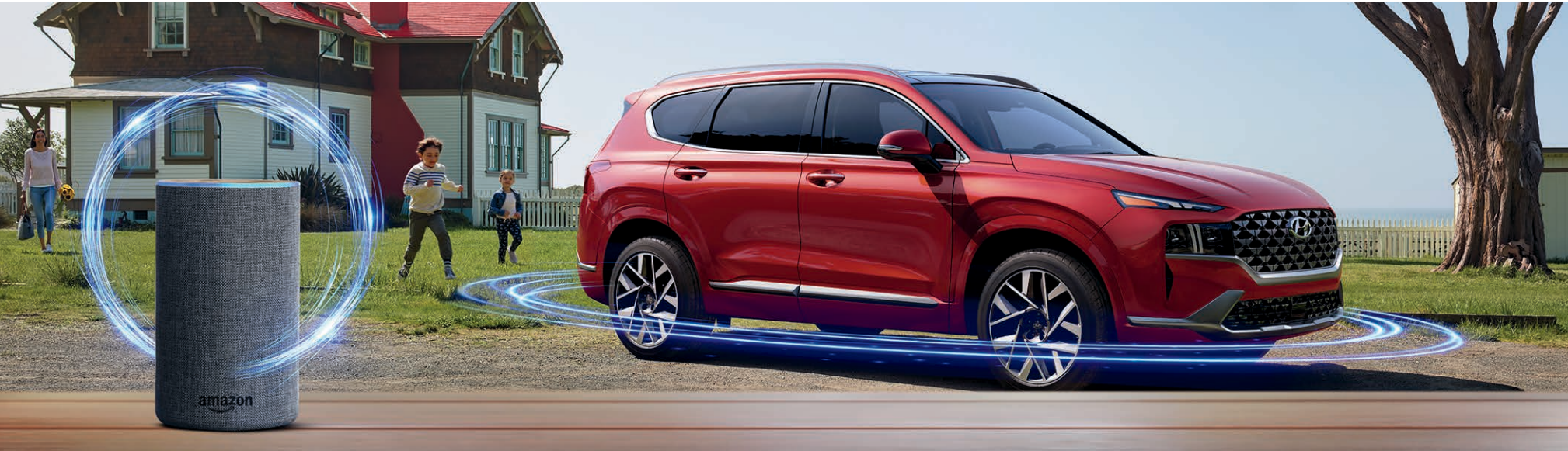
Of course, Santa Fe comes standard with Apple CarPlay® and Android Auto,<sup>5</sup> and you can now connect two phones to the audio system simultaneously via Bluetooth streaming.<sup>5</sup> Good to know you can easily keep your digital devices powered up, too. Santa Fe is available with a wireless device charging pad,<sup>6</sup> and dual front and rear USB charge ports are standard.



Hyundai Digital Key



Wireless device charging



SANTA FE Calligraphy with 20" wheels in Calypso Red<sup>8</sup>



### Automatic Emergency Assistance

Blue Link Connected Care offers 24/7 SOS Emergency Assistance and Automatic Collision Notification that calls for help if you're in an accident where airbags deploy.<sup>7</sup>



### On-Demand Diagnostics

Run vehicle diagnostics from your Santa Fe's touchscreen, report issues at the press of a button and receive Monthly Vehicle Health Reports or maintenance reminders by email.



### Driver Profile Management

Save your navigation searches, radio presets and instrument cluster menu settings to the Blue Link cloud, and they can be remotely updated and pushed to your Santa Fe.



### Car Finder

Our Car Finder smartphone app feature lets you navigate your way back to your Santa Fe after a day of downtown shopping or an evening spent rooting for your favorite team.



### Remote Controls

Use your smartphone, smart speaker or wearable device to remotely start your Santa Fe's engine, set the cabin temperature, unlock the doors and more.



### Remote Vehicle Status

Wondering how much fuel is in your tank? If your Santa Fe's liftgate is open or the doors are unlocked? Your MyHyundai app knows the answers to these questions and more.

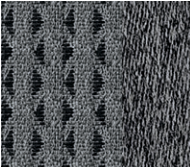


## Interior Colors

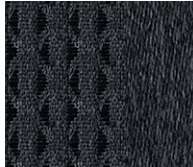
SE / SEL / SEL Convenience



Beige Cloth

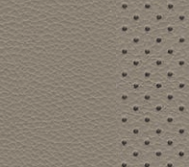


Gray Cloth



Black Cloth

SEL Premium / Limited



Beige Leather



Gray Leather



Black Leather

Calligraphy



Coquina Beige Nappa Leather



Obsidian Black Nappa Leather

## Exterior Colors



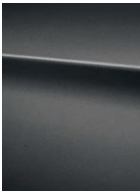
Quartz White



Shimmering Silver



Hampton Gray



Portofino Gray



Calypso Red



Stormy Sea



Twilight Black



SANTA FE  
SE



Popular Features

- LED headlights and Daytime Running Lights
- Forward Collision-Avoidance Assist with Pedestrian, Cyclist and Junction-Turning Detection
- Lane Keeping Assist and Lane Following Assist
- Rear Occupant Alert
- 8" high-resolution touchscreen AM/FM Display Audio system
- Wireless Apple CarPlay® and Android Auto™
- Smart Cruise Control with Stop & Go

SANTA FE  
Limited



Popular Features

- 19" alloy wheels
- Power-folding side mirrors
- Blind-Spot View Monitor
- Surround View Monitor
- Ventilated front seats
- Heated rear seats and steering wheel
- Remote Smart Parking Assist

Wheels



SE / SEL  
18" Alloy Wheel



Limited / Calligraphy  
19" Alloy Wheel



Calligraphy  
20" Alloy Wheel¹

SANTA FE  
SEL



Popular Features

- Proximity Key entry with push button start
- 8-way power driver seat with 2-way lumbar support
- Heated front seats and side mirrors
- Blue Link® Connected Car System
- Blind-Spot Collision-Avoidance Assist
- Rear Cross-Traffic Collision-Avoidance Assist
- Wireless device charging
- Safe Exit Assist

SANTA FE  
Calligraphy



Popular Features

- HTRAC All Wheel Drive
- 19"/20" alloy wheels
- Dark chrome accent front grille
- Full-color Heads-up Display
- Quilted Nappa leather seating surfaces
- Eco-suede headliner
- Ambient interior lighting

SEL Convenience Package	
Power-folding rear seats	12.3" digital instrument cluster display
Hands-free smart liftgate	LED taillights
Dual automatic temperature control with Predictive Logic	Auto-dimming rearview mirror with HomeLink®
Hyundai Digital Key	Ultrasonic Rear Occupant Alert
Leather-wrapped steering wheel	Side mirrors with LED turn signal indicators
Rear side window sunshades	Acoustic-laminated front side windows
Side mirrors with approach lights	

SEL Premium Package <sup>[requires SEL Convenience Package]</sup>	
Power tilt-and-slide panoramic sunroof	Premium door sill plates
Leather seating surfaces	10.25" touchscreen navigation system
8-way power front passenger seat	Highway Driving Assist
Harman Kardon® premium audio system	LED interior lighting

HTRAC All Wheel Drive Option	
HTRAC All Wheel Drive	Downhill Brake Control
AWD Lock	Snow Mode

Smartstream 2.5L MPI/GDI 4-Cylinder

hp 191

lb-ft 181

EPA MPG Estimates (City/Highway/Combined)²

25/28/26 22/25/24

FWD 8-speed A/T

AWD 8-speed A/T

Smartstream 2.5L Turbo MPI/GDI 4-Cylinder

hp 277

lb-ft 311

EPA MPG Estimates (City/Highway/Combined)²

22/28/25 21/28/24

FWD 8-speed DCT

AWD 8-speed DCT

¹Late availability. ²EPA estimates for comparison only. Mileage may vary. Your actual mileage will vary with options, driving conditions, driving habits and the vehicle's condition.

SANTA FE

	SE	SEL	Ltd	Calli
Power & Handling				
191 hp/181 lb-ft, Smartstream 2.5L MPI/GDI 4-cylinder engine	●	●	—	—
277 hp/311 lb-ft, Smartstream 2.5L Turbo MPI/GDI 4-cylinder engine	—	—	●	●
Idle Stop & Go	●	●	●	●
8-speed automatic transmission with SHIFTRONIC®	●	●	—	—
8-speed EcoShift® Dual Clutch Transmission (DCT) with SHIFTRONIC®	—	—	●	●
Shift-by-Wire electronic push-button gear selection	●	●	●	●
Drive Mode Select	●	●	●	●
HTRAC All Wheel Drive and Downhill Brake Control	○	○	○	●
Electronic Parking Brake with Automatic Vehicle Hold	●	●	●	●
Trailer Sway Assist	●	●	●	●
Tire Mobility Kit	—	—	○	●
Exterior Features				
Automatic headlights with High Beam Assist	●	●	●	●
LED Daytime Running Lights and accent lights	●	●	●	●
LED headlights	●	●	●	●
LED taillights	—	●	●	●
Dark chrome accent front grille	—	—	—	●
Acoustic-laminated windshield	●	●	●	●
Acoustic-laminated front side windows	—	●	●	●
Side mirrors with LED turn signal indicators and approach lights	—	●	●	●
Bodycolor dual power side mirrors	●	●	●	●
Power-folding side mirrors	—	—	●	●
Heated side mirrors	—	●	●	●
Roof side rails	—	●	●	●
Power tilt-and-slide panoramic sunroof	—	●	●	●
Hands-free smart liftgate with auto open and adjustable height setting	—	●	●	●
Rain-sensing windshield wipers	—	—	●	●
Interior Features				
Proximity Key entry with push button start and key fob remote engine start	—	●	●	●
4.2" color LCD multi-information display	●	●	—	—
12.3" digital instrument cluster display with selectable viewing modes	—	●	●	●
Full color Heads-up Display	—	—	—	●
Tilt-and-telescopic steering wheel	●	●	●	●
8-way power driver seat with 2-way power lumbar support	—	●	—	—
8-way power driver seat with 4-way power lumbar support and cushion extension	—	—	●	●
8-way power front passenger seat	—	●	●	●
Heated front seats	—	●	●	●
Leather seating surfaces and LED interior lighting	—	●	●	●
Reclining 60/40 split fold-flat rear seats with center armrest	●	●	●	●
Leather-wrapped steering wheel and power-folding rear seats	—	●	●	●
Heated steering wheel	—	—	●	●
Ventilated front seats and heated rear seats	—	—	●	●
Integrated Memory System for driver seat and side mirrors	—	—	●	●
Quilted Nappa leather seating surfaces and eco-suede headliner	—	—	—	●
Dual automatic temperature control and rear side-window sunshades	—	●	●	●
Floor console-mounted rear seat vents	●	●	●	●

SANTA FE

	SE	SEL	Ltd	Calli
Interior Features				
Smart Cruise Control with Stop & Go	●	●	●	●
Premium door trim and ambient interior lighting	—	—	—	●
Power windows with auto-down/up (driver   passenger   rear)	● — —	● ● —	● ● —	● ● ●
Auto-dimming rearview mirror with HomeLink®	—	●	●	●
Remote Smart Parking Assist	—	—	●	●
Rear View Monitor with Parking Guidance	●	●	●	●
Advanced Safety				
Forward Collision-Avoidance Assist with Pedestrian, Cyclist and Junction-Turning Detection	●	●	●	●
Lane Keeping Assist and Lane Following Assist	●	●	●	●
Rear Occupant Alert	●	●	●	●
Blind-Spot Collision-Avoidance Assist	—	●	●	●
Rear Cross-Traffic Collision-Avoidance Assist	—	●	●	●
Safe Exit Assist	—	●	●	●
Highway Driving Assist	—	●	●	●
Parking Distance Warning – Forward & Reverse	—	—	●	●
Driver Attention Warning	●	●	●	●
Blind-Spot View Monitor and Surround View Monitor	—	—	●	●
Audio & Connected Car Technology				
8" high-resolution touchscreen AM/FM Display Audio system	●	●	—	—
HD Radio™ and SiriusXM Satellite Radio	—	●	●	●
10.25" high-resolution touchscreen navigation system	—	●	●	●
Harman Kardon® 12-speaker premium audio with QuantumLogic® Surround and Clari-Fi™ Music Restoration Technology	—	●	●	●
Bluetooth® hands-free phone system with wireless audio streaming	●	●	●	●
Android Auto™ and Apple CarPlay® (wireless   wired)	● —	● ●	— ●	— ●
Blue Link® Connected Car System (3 years complimentary)	—	●	●	●
Wireless device charging	—	●	●	●
Rear Seat Quiet Mode	●	●	●	●
Hyundai Digital Key	—	●	●	●
Dual front and rear USB charge ports	●	●	●	●
Front and cargo area 12-volt power outlets	●	●	●	●
115-volt power outlet	—	—	●	●
● Standard ○ Optional ● Convenience Package ● Premium Package — Not Available Ltd=Limited Trim Calli=Calligraphy Trim				
Exterior / Interior Dimensions				
SANTA FE				
Wheelbase	108.9 in			
Overall Length	188.4 in			
Overall Width	74.8 in			
Overall Height (with roof side rails)	66.3 (67.3) in			
Headroom – front (with sunroof)/rear (with sunroof)	41.2 (39.5) / 39.0 (37.8) in			
Legroom – front/rear	44.1 / 41.7 in			
Shoulder Room – front/rear	59.1 / 58.3 in			
Passenger Volume	111.5 cu ft			
Cargo Capacity – rear seats folded down/up	72.1 / 36.4 cu ft			
Total Interior Volume	147.9 cu ft			





Hyundai Hope On Wheels®

Helping Kids Fight Cancer Since 1998



## Hope makes every Hyundai better.

Each time we sell a Hyundai, a portion goes to Hyundai Hope On Wheels® to help find a cure for childhood cancer. Over the last 22 years, Hyundai Hope On Wheels has donated more than \$172 million. Hope is our greatest feature. And it comes standard on every Hyundai. For more information, please visit [HyundaiHopeOnWheels.org](http://HyundaiHopeOnWheels.org).



## America's Best Warranty

POWERTRAIN  
LIMITED WARRANTY

10 YEARS 100,000 MILES

NEW VEHICLE  
LIMITED WARRANTY

5 YEARS 60,000 MILES

ANTI-PERFORATION  
WARRANTY

7 YEARS UNLIMITED MILES

24/7 ROADSIDE  
ASSISTANCE

5 YEARS UNLIMITED MILES



**Hyundai**  
Complimentary  
Maintenance

Complimentary maintenance includes Hyundai-approved oil and oil filter change (except for electric vehicles and fuel cell electric vehicles) plus tire rotation at normal factory scheduled maintenance intervals for 3 years or 36,000 miles, whichever comes first. More frequent maintenance due to severe driving or conditions is excluded. Offer valid only for new 2020-2021 Hyundai models purchased or leased on or after February 1, 2020. See your Hyundai dealer for further details and limitations.

**HYUNDAI**  
**Assurance**

[HYUNDAIASSURANCE.COM](http://HYUNDAIASSURANCE.COM)

Our commitment to Hyundai owners does not end with the transfer of keys. Wherever the road takes you, we've got your back with Hyundai Assurance, an umbrella of services and benefits that includes America's Best Warranty, 24/7 Roadside Assistance, innovative safety and car care features...and more.

See dealer for LIMITED WARRANTY details. Fuel economy estimated by EPA for comparison only. Mileage may vary. While the information contained in this brochure was correct at the time of printing, specifications and equipment can change. Feature comparisons based on competitor information available at the time of printing. No warranty or guarantee is being extended in this brochure, and Hyundai reserves the right to change product specifications and equipment at any time without incurring obligations. Some vehicles are shown with optional equipment. Specifications apply to U.S. vehicles only. Please contact your Hyundai dealer for current vehicle specifications. As part of Hyundai's commitment to a responsible environment, this brochure was printed using paper certified by the Forest Stewardship Council®. FSC® certification helps ensure that the highest social and environmental standards are met in the making of the paper we use, contributing to conservation, responsible management and community-level benefits for people near the forests.



©2020 HYUNDAI NP02072021