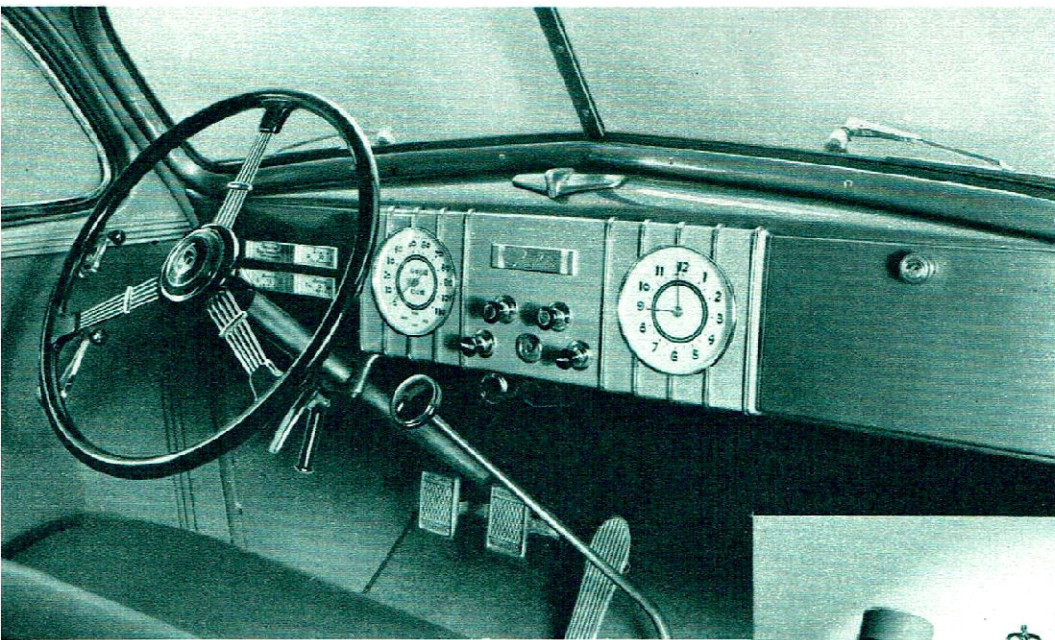


LOOK AT *LaSalle!*

LOOK AT *La Salle's* COMFORT AND CONVENIENCE

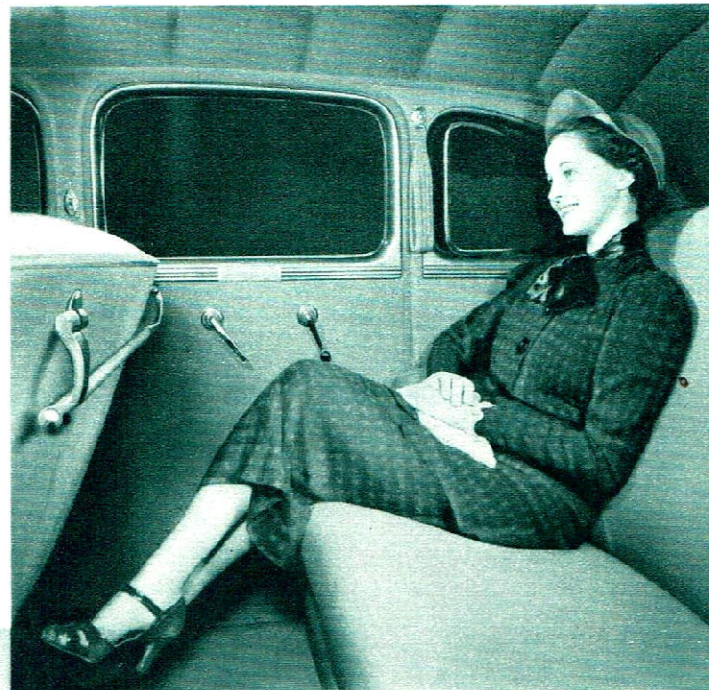
The handsome La Salle instrument panel richly deserves admiring comments. The instruments are all located within plain view. Controls are placed for convenient reach. The front seat is adjustable to suit the requirements of the driver.



A built-in ash receiver and locking parcel compartment are provided in the instrument panel. The nameplate in the center panel may be removed for the installation of radio controls.

Spacious compartments provide ample luggage room for long vacation tours. The spare tire is concealed, yet may be easily removed and replaced.

New La Salle Bodies by Fisher have been substantially increased in length and width. Lower floors provide considerably more leg-room.



La Salle interiors are invitingly roomy and restful. Their tailoring reveals the flawless work of master Fisher Body craftsmen. Upholstery may be selected from Bedford Cord or Broadcloth, in tan or gray shades.

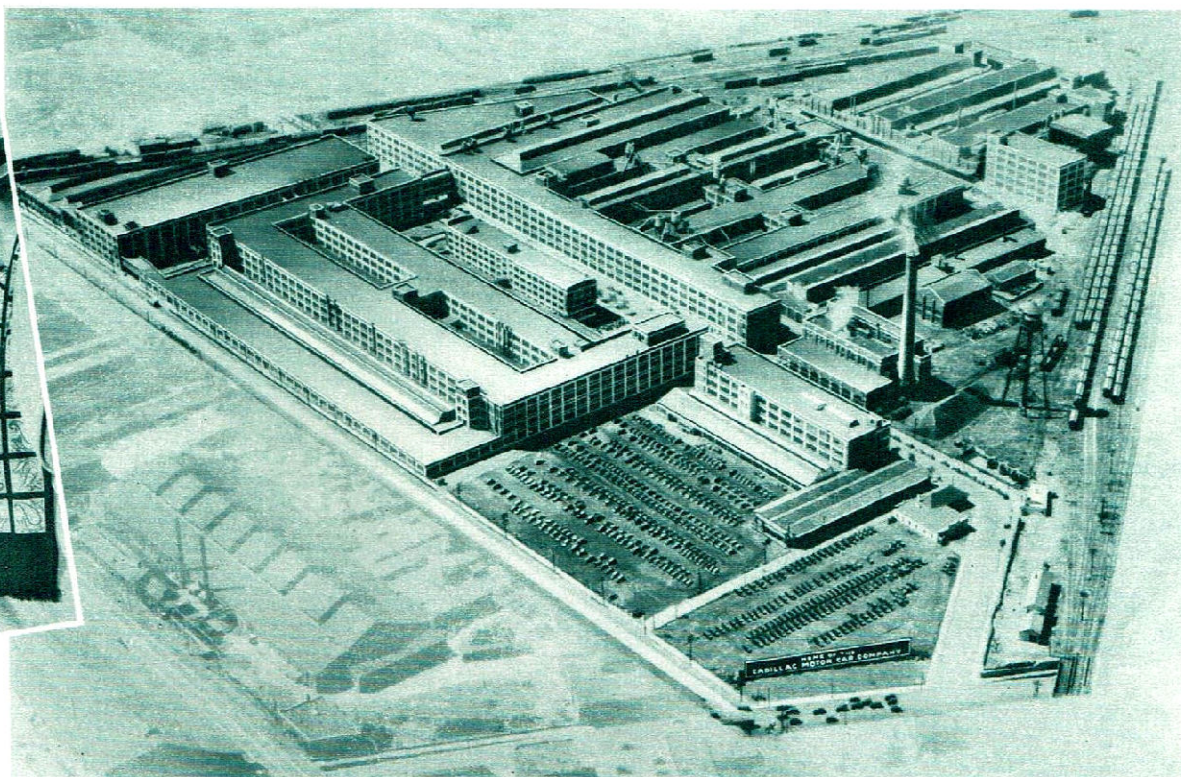


La Salle luggage compartments are completely sealed against water and dirt. The cover support may be released by raising the cover slightly, eliminating the need of operating the catch by hand.

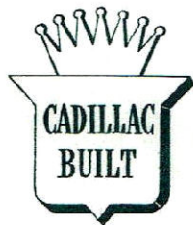
LOOK AT *La Salle* FOR LOW FIRST COST AND LOW UPKEEP COST



Owners of the new V-8 La Salle will discover remarkably high mileages for gasoline and oil—due to the efficiency of its Cadillac-built V-8 engine. All lubrication and maintenance needs—including both work and materials—are available on a contract plan at a fraction of a cent per mile.

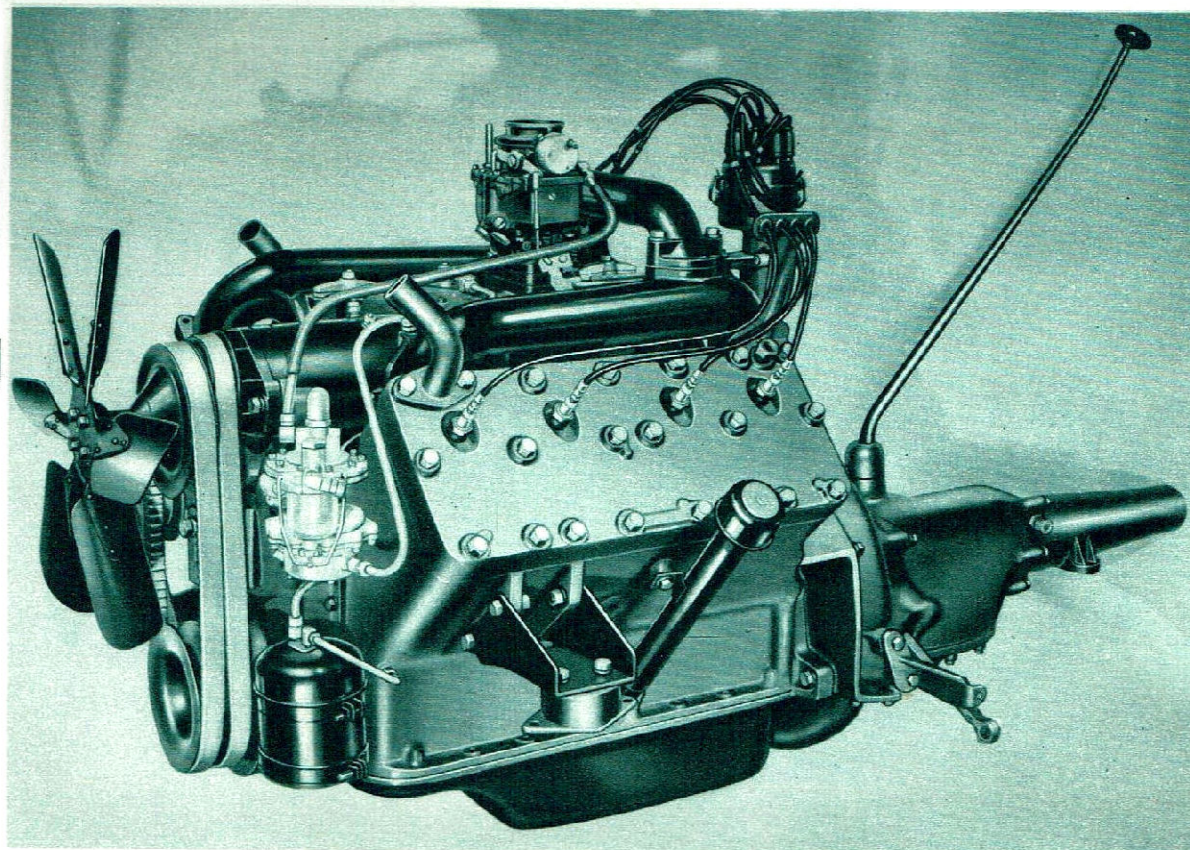


The new V-8 La Salle is completely Cadillac-built—an assurance of long life and exceptional dependability. Because of its all-round economy, a La Salle is actually less expensive than many cars of lower price.



V-8 **DEPENDABILITY**
PERFORMANCE
SMOOTHNESS

**AS ONLY CADILLAC
CAN PROVIDE THEM**



\$995*

AND UP

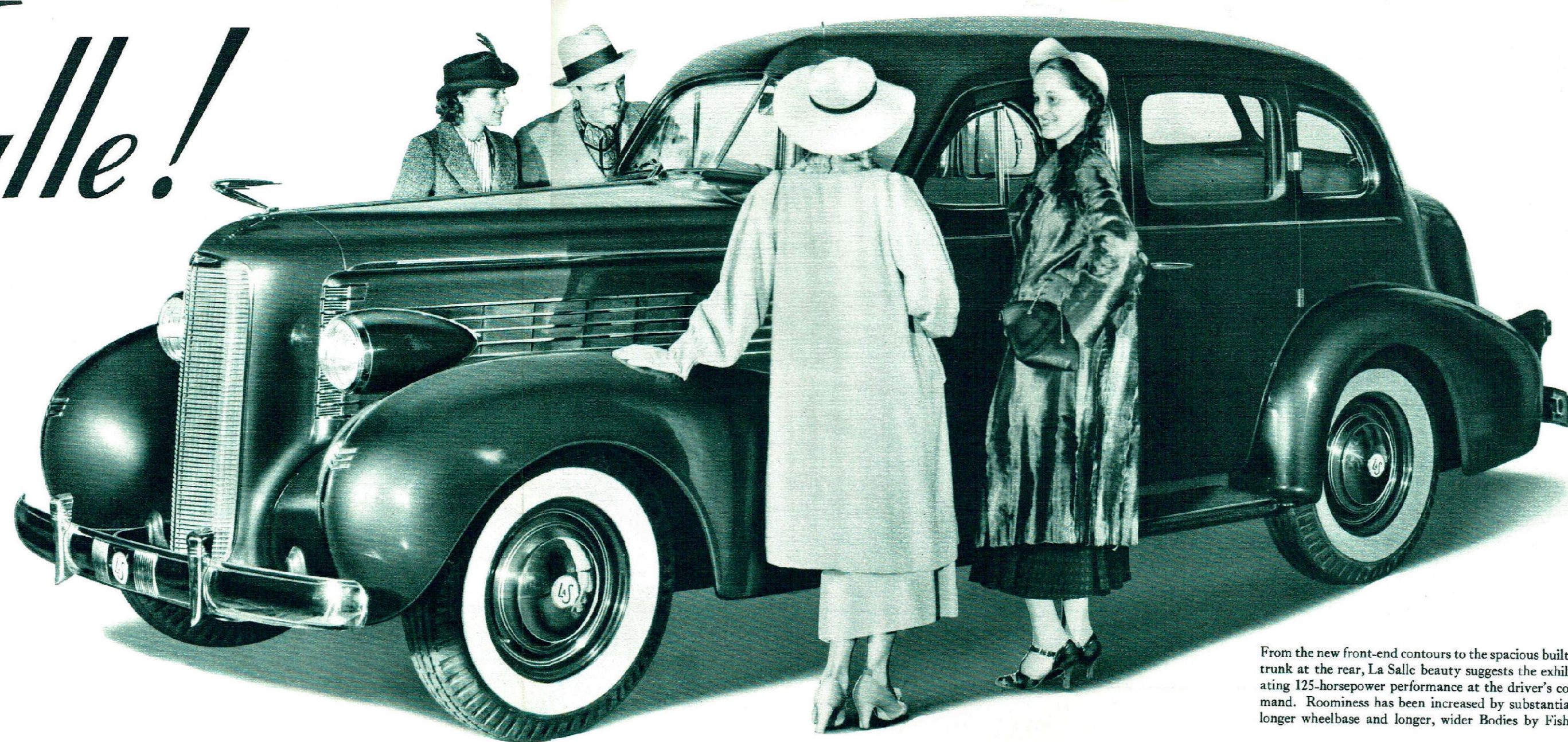
**THE LOWEST PRICE
IN La SALLE HISTORY**

**Monthly G.M.A.C. terms to suit your purse. Prices list at factory, Detroit, Michigan. Special equipment extra.*

LOOK AT

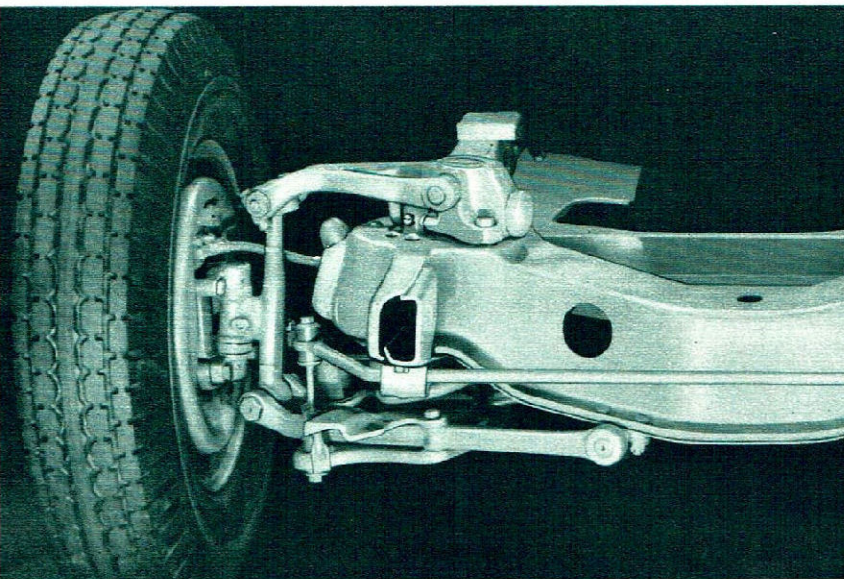
LaSalle!
V-8

COMPLETELY
CADILLAC-BUILT—
THE FINEST LASALLE
OF ALL TIME!

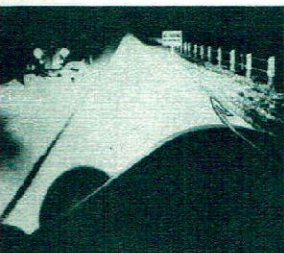


From the new front-end contours to the spacious built-in trunk at the rear, La Salle beauty suggests the exhilarating 125-horsepower performance at the driver's command. Roominess has been increased by substantially longer wheelbase and longer, wider Bodies by Fisher.

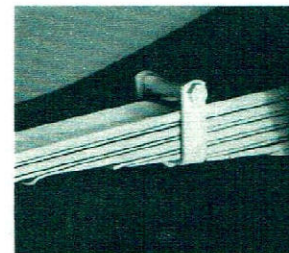
LOOK AT *La Salle's* FEATURES



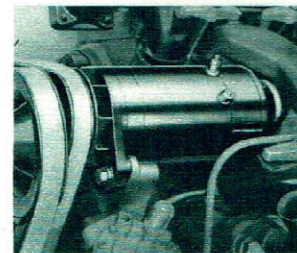
La Salle Knee-Action, improved for 1937, is the same highly-perfected type offered on the most expensive custom cars—a feature essential for smooth, restful riding comfort.



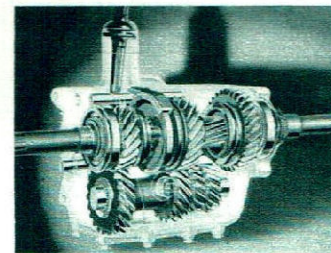
La Salle Multibeam headlights illuminate the road for a safe distance, free from glare.



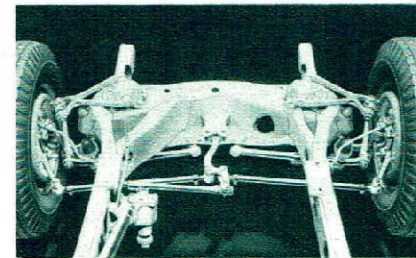
Waxed liners, inserted between the leaves, eliminate the need for rear spring lubrication.



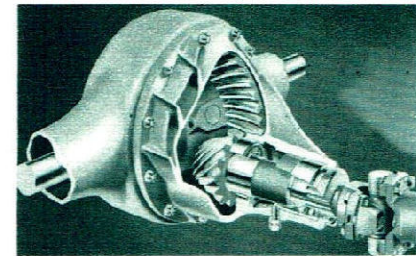
The generator charging rate is automatically regulated to meet radio, heater and other electrical needs.



La Salle helical gears are virtually soundless in all speeds, and any driver can easily shift them without clashing.

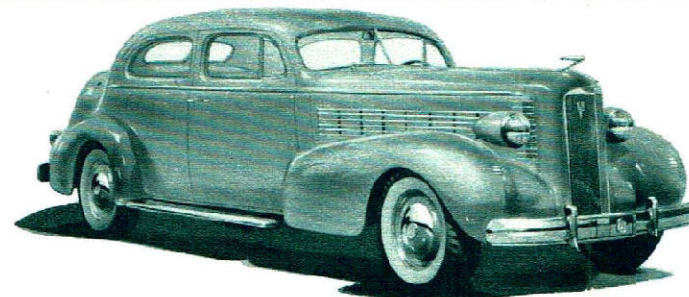


La Salle center-point steering requires only a light finger pressure.



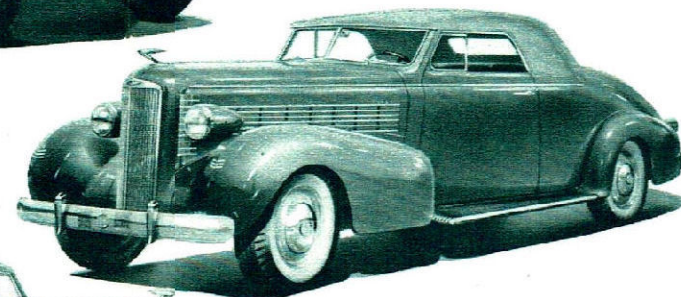
The new La Salle hypoid rear axle is the strongest type for its weight in use today. Its gears operate with exceptional quietness.

LOOK AT *La Salle's* BEAUTY



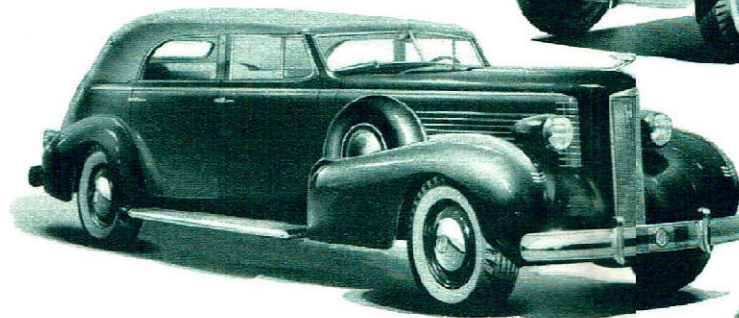
TWO-DOOR TOURING SEDAN

Exceptionally wide doors. Adjustable front seat, full-width for three passengers. Spacious, sealed built-in trunk. Concealed spare tire.



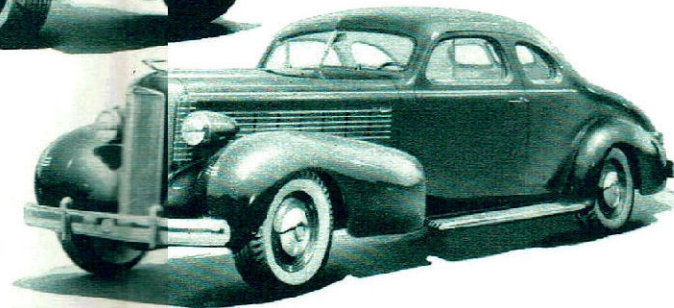
CONVERTIBLE COUPE

The spare tire is concealed in a separate compartment under the rumble seat, out of sight but easy to remove and replace.



CONVERTIBLE SEDAN

A side-mounted spare tire is standard equipment, at no extra cost, reserving all of the spacious rear compartment for luggage.

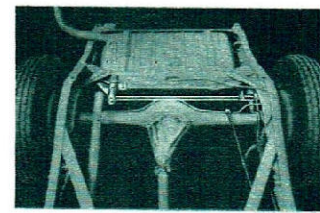


TWO-PASSENGER COUPE

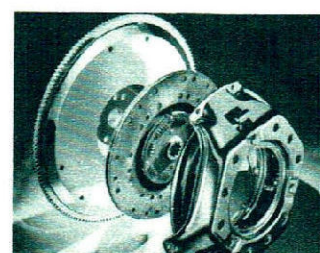
Two opera seats, inside, accommodate two additional passengers. Liberal luggage space. Concealed spare tire.



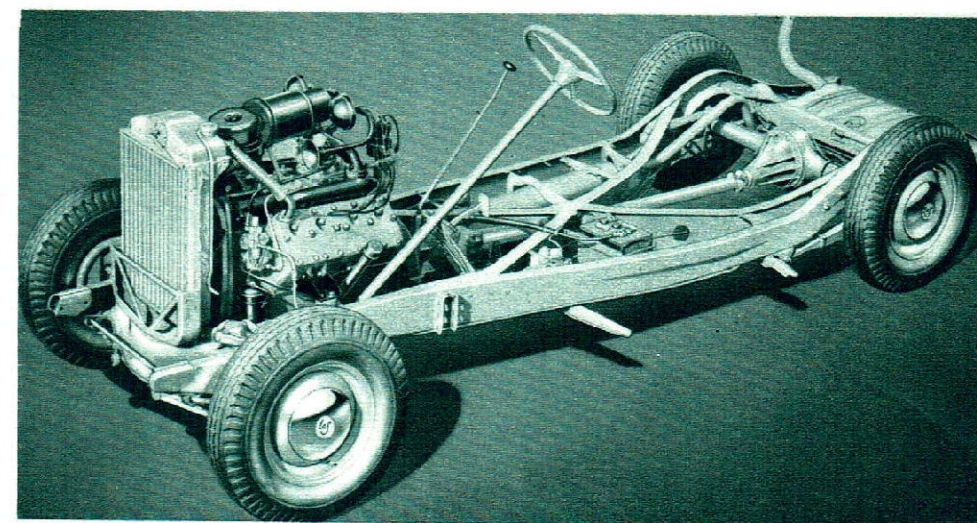
La Salle Fisher Bodies provide "Unisteel" Turret-Top construction—all-steel safety overhead, on all sides, and below.



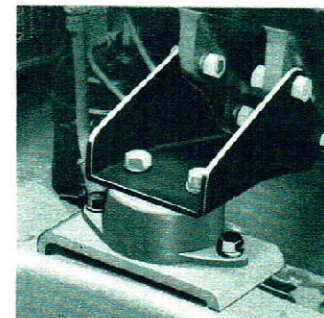
Two stabilizers—front and rear—assure a steady, balanced ride by resisting "side sway" on curves.



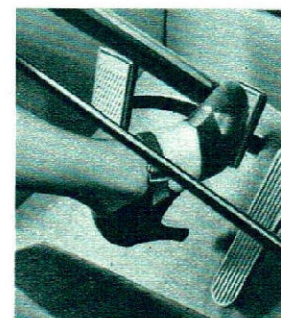
The big, long-wearing La Salle clutch engages smoothly and quietly, making La Salle's fast acceleration doubly enjoyable.



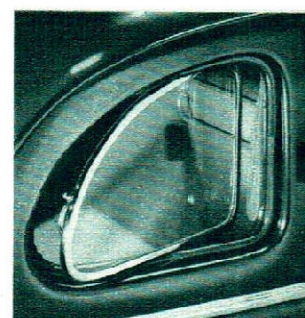
La Salle 125-horsepower V-8 performance is a new and exhilarating experience. The smoothness and quietness of its V-8 engine could only come from Cadillac, where the first of all V-8 engines was built.



Three rubber mountings support the La Salle engine, insulating it from the frame without excessive engine movement.



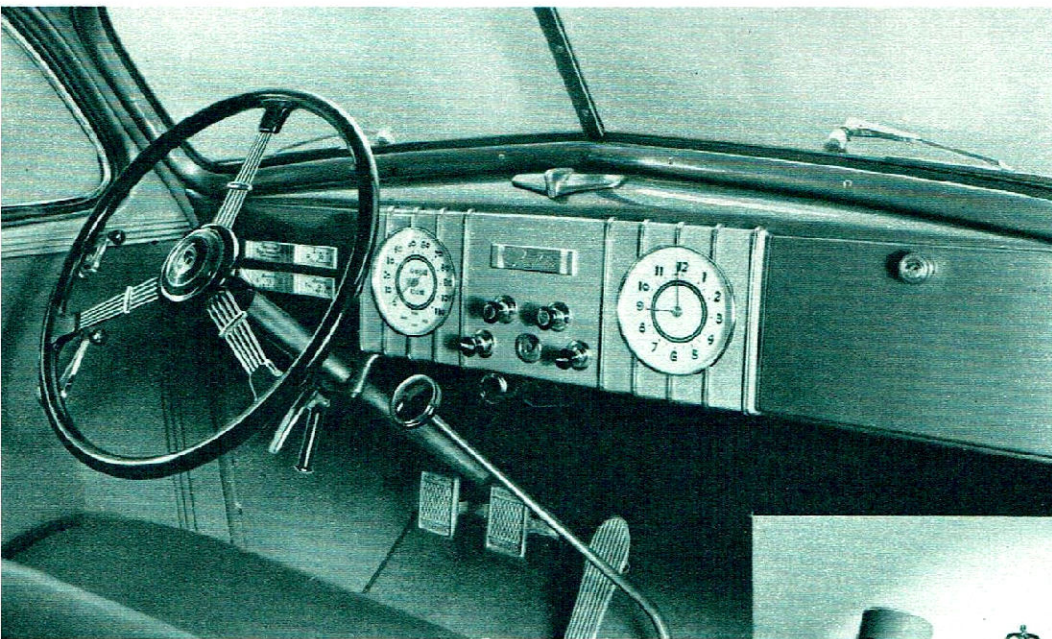
Larger brake linings, impervious to moisture, increase the safety of La Salle hydraulic brakes.



Fisher No-Draft Ventilation circulates fresh air in any weather for health and comfort.

LOOK AT *La Salle's* COMFORT AND CONVENIENCE

The handsome La Salle instrument panel richly deserves admiring comments. The instruments are all located within plain view. Controls are placed for convenient reach. The front seat is adjustable to suit the requirements of the driver.



A built-in ash receiver and locking parcel compartment are provided in the instrument panel. The nameplate in the center panel may be removed for the installation of radio controls.

Spacious compartments provide ample luggage room for long vacation tours. The spare tire is concealed, yet may be easily removed and replaced.

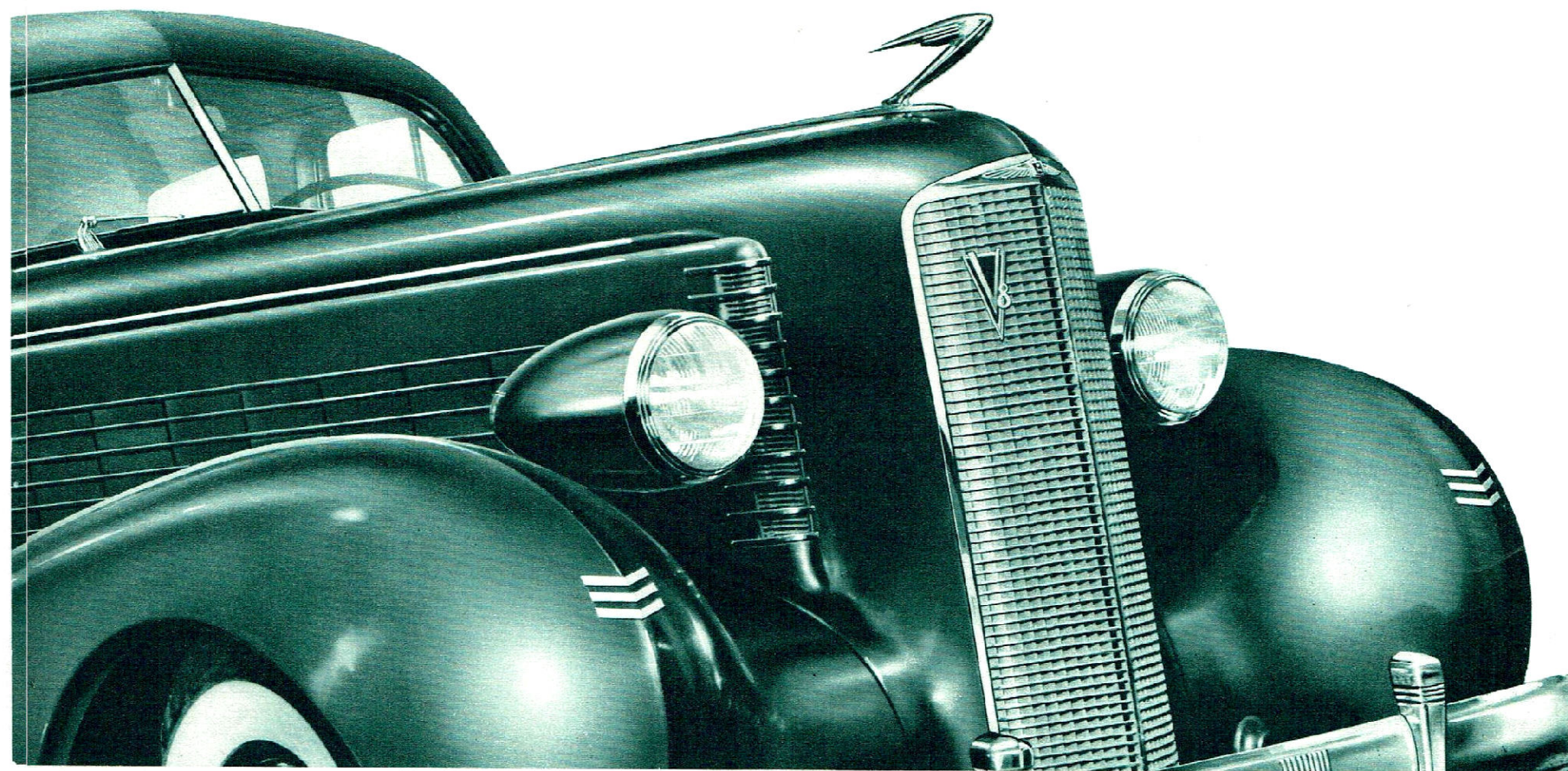
New La Salle Bodies by Fisher have been substantially increased in length and width. Lower floors provide considerably more leg-room.



La Salle interiors are invitingly roomy and restful. Their tailoring reveals the flawless work of master Fisher Body craftsmen. Upholstery may be selected from Bedford Cord or Broadcloth, in tan or gray shades.

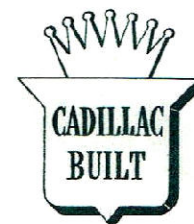


La Salle luggage compartments are completely sealed against water and dirt. The cover support may be released by raising the cover slightly, eliminating the need of operating the catch by hand.



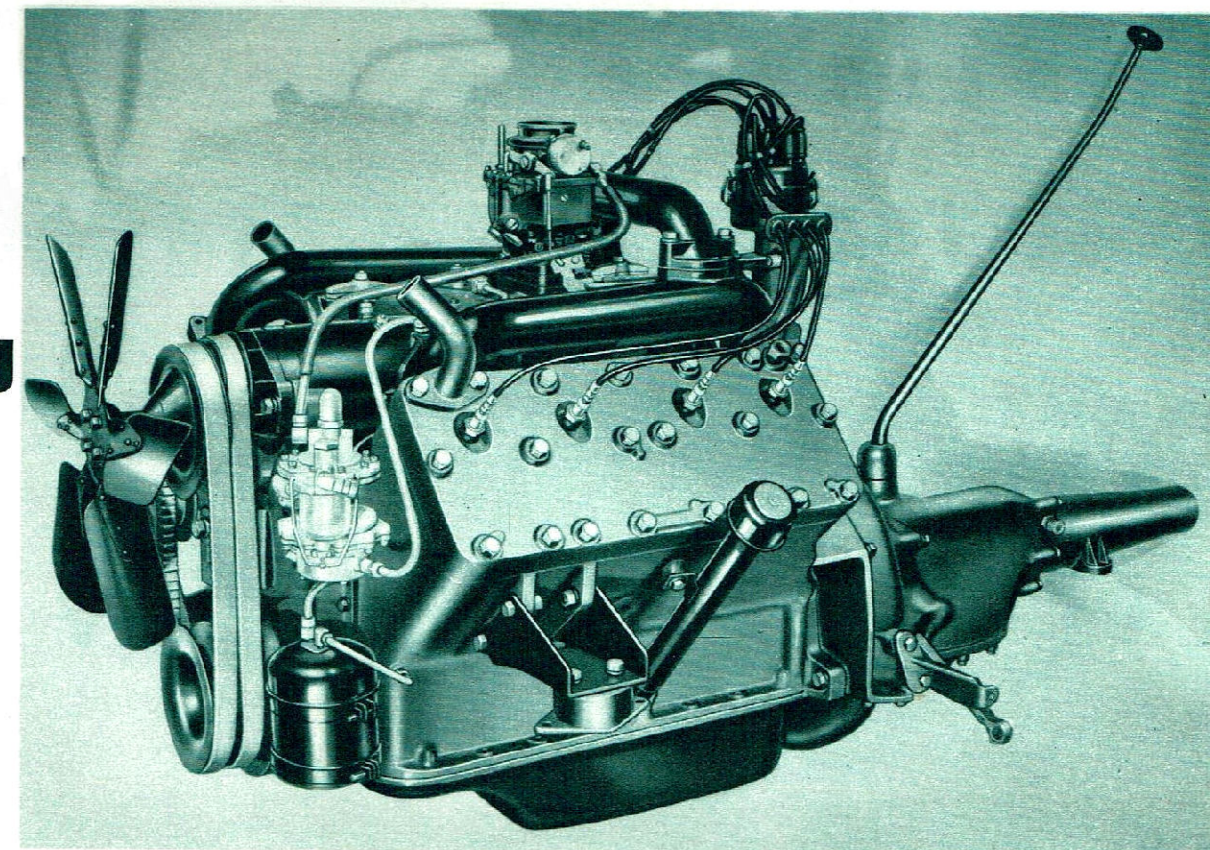
LOOK AT *La Salle!*

LOOK AT *La Salle* FOR LOW FIRST COST AND LOW UPKEEP COST



V-8 DEPENDABILITY
PERFORMANCE
SMOOTHNESS

AS ONLY CADILLAC
CAN PROVIDE THEM



THE LOWEST PRICE
IN *La SALLE* HISTORY

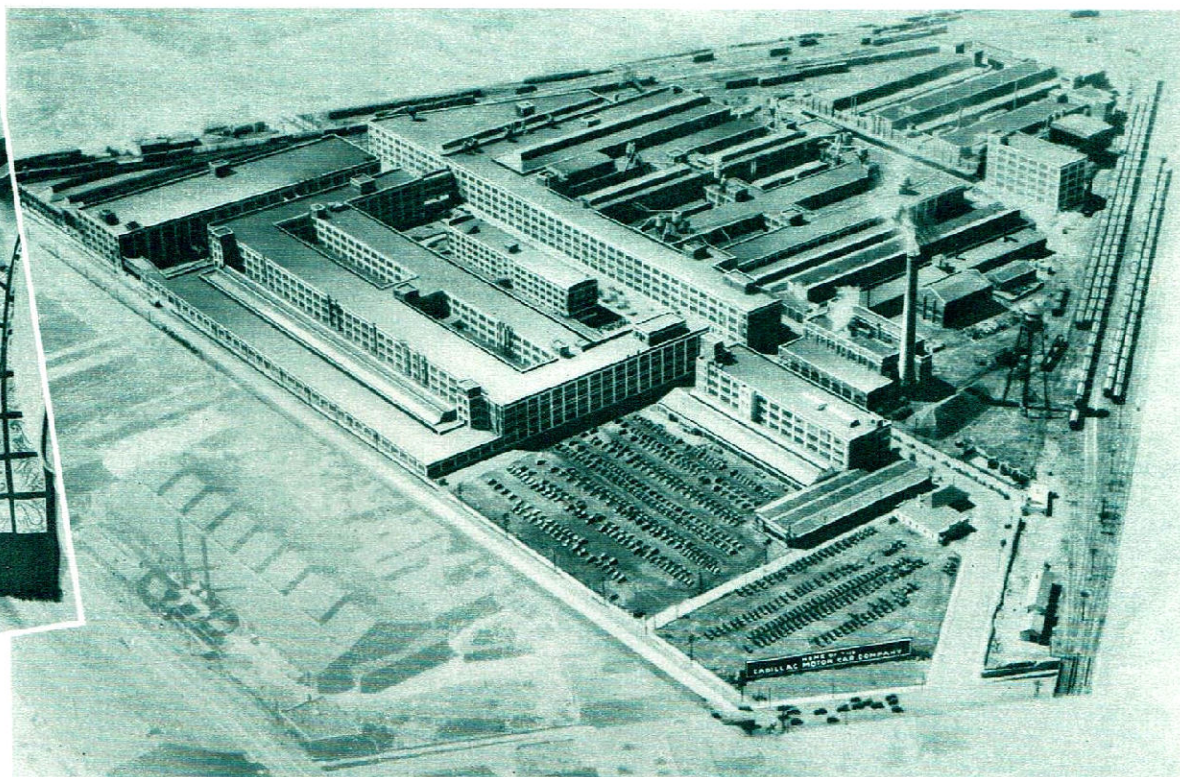
\$995*

AND UP

*Monthly G.M.A.C. terms to suit your purse. Prices list at factory, Detroit, Michigan. Special equipment extra.



Owners of the new V-8 La Salle will discover remarkably high mileages for gasoline and oil—due to the efficiency of its Cadillac-built V-8 engine. All lubrication and maintenance needs—including both work and materials—are available on a contract plan at a fraction of a cent per mile.

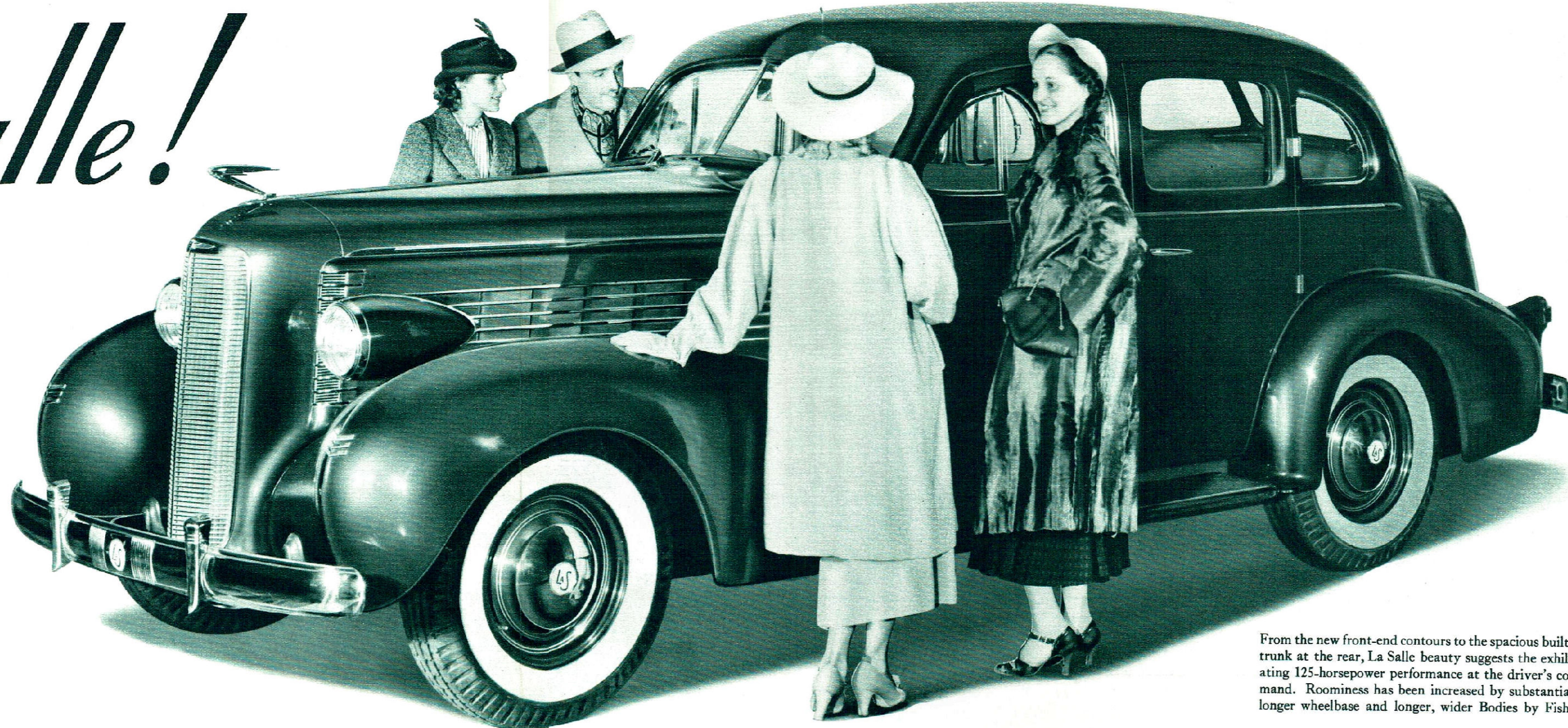


The new V-8 La Salle is completely Cadillac-built—an assurance of long life and exceptional dependability. Because of its all-round economy, a La Salle is actually less expensive than many cars of lower price.

LOOK AT

La Salle!
V-8

COMPLETELY
CADILLAC-BUILT—
THE FINEST LA SALLE
OF ALL TIME!

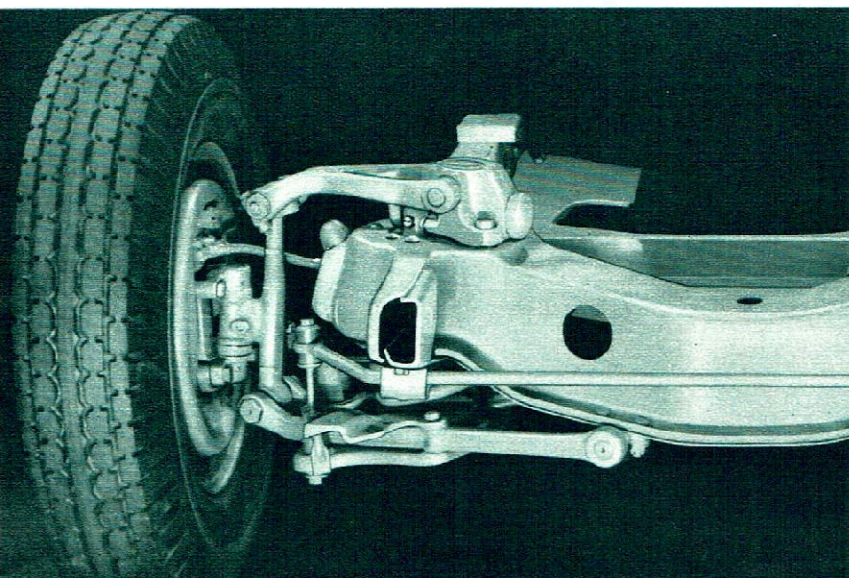


From the new front-end contours to the spacious built-in trunk at the rear, La Salle beauty suggests the exhilarating 125-horsepower performance at the driver's command. Roominess has been increased by substantially longer wheelbase and longer, wider Bodies by Fisher.

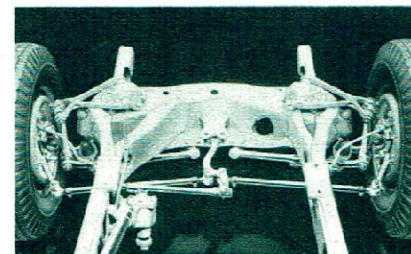
LOOK AT *La Salle's* FEATURES

LOOK AT *La Salle's* BEAUTY

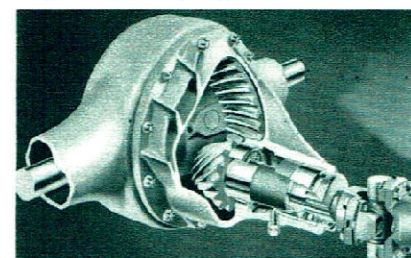
LOOK AT *La Salle's* VALUE



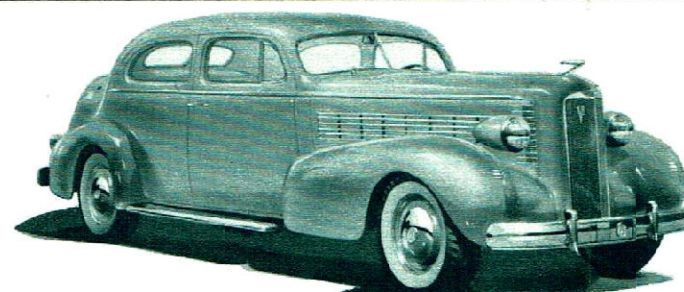
La Salle Knee-Action, improved for 1937, is the same highly-perfected type offered on the most expensive custom cars—a feature essential for smooth, restful riding comfort.



La Salle center-point steering requires only a light finger pressure.

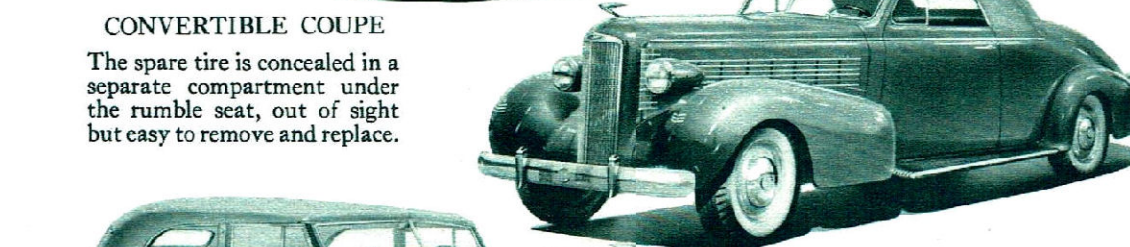


The new La Salle hypoid rear axle is the strongest type for its weight in use today. Its gears operate with exceptional quietness.



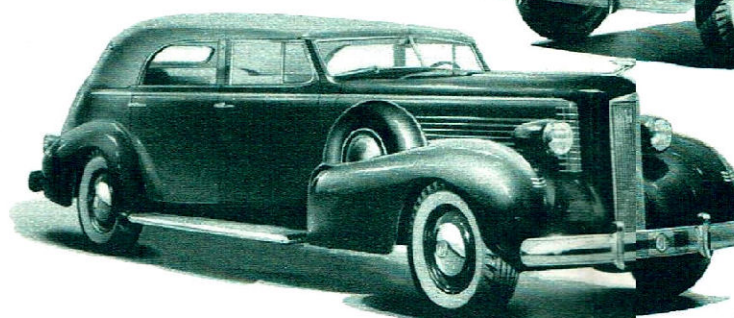
TWO-DOOR TOURING SEDAN

Exceptionally wide doors. Adjustable front seat, full-width for three passengers. Spacious, sealed built-in trunk. Concealed spare tire.



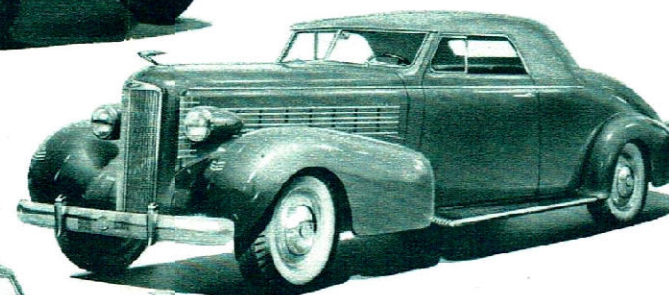
CONVERTIBLE COUPE

The spare tire is concealed in a separate compartment under the rumble seat, out of sight but easy to remove and replace.



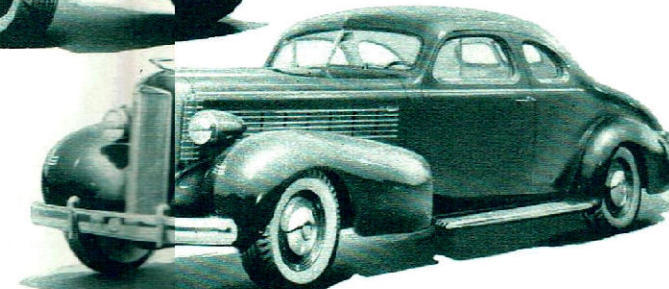
TWO-PASSENGER COUPE

Two opera seats, inside, accommodate two additional passengers. Liberal luggage space. Concealed spare tire.

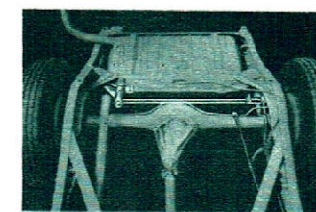


CONVERTIBLE SEDAN

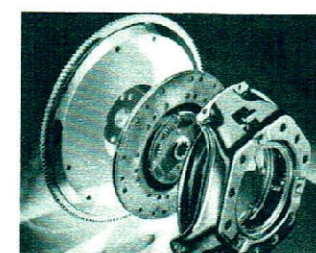
A side-mounted spare tire is standard equipment, at no extra cost, reserving all of the spacious rear compartment for luggage.



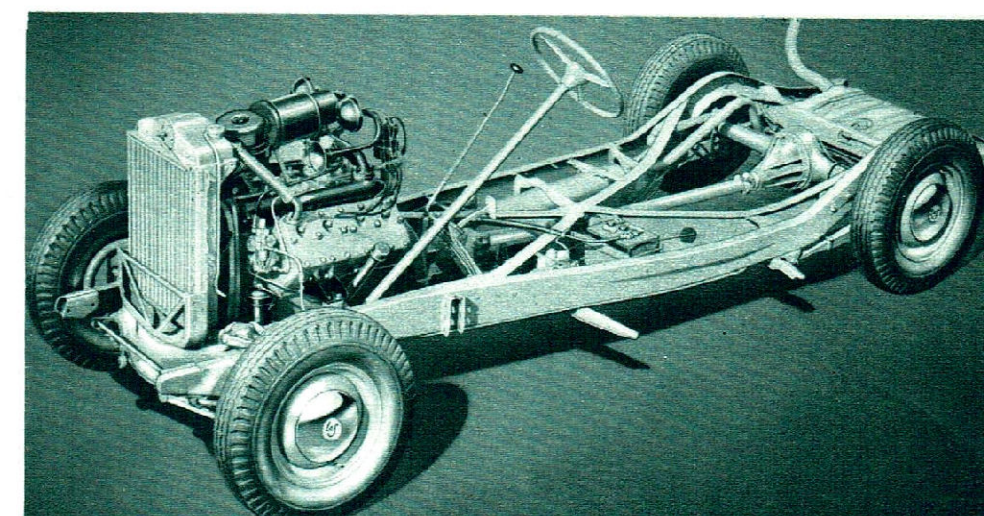
La Salle Fisher Bodies provide "Unisteel" Turret-Top construction—all-steel safety overhead, on all sides, and below.



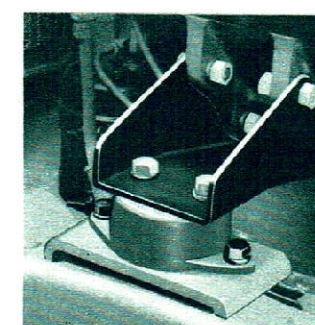
Two stabilizers—front and rear—assure a steady, balanced ride by resisting "side sway" on curves.



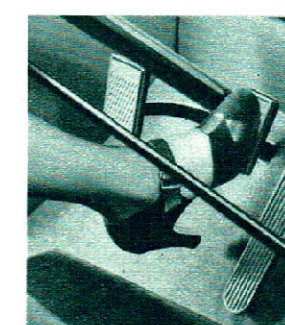
The big, long-wearing La Salle clutch engages smoothly and quietly, making La Salle's fast acceleration doubly enjoyable.



La Salle 125-horsepower V-8 performance is a new and exhilarating experience. The smoothness and quietness of its V-8 engine could only come from Cadillac, where the first of all V-8 engines was built.



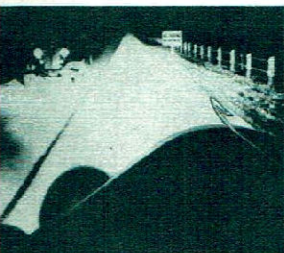
Three rubber mountings support the La Salle engine, insulating it from the frame without excessive engine movement.



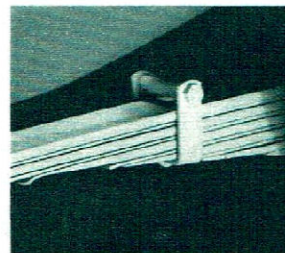
Larger brake linings, impervious to moisture, increase the safety of La Salle hydraulic brakes.



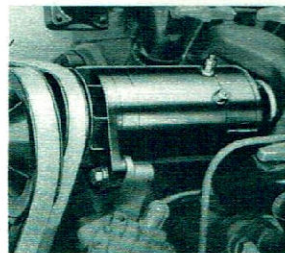
Fisher No-Draft Ventilation circulates fresh air in any weather for health and comfort.



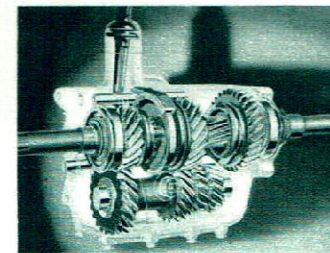
La Salle Multibeam headlights illuminate the road for a safe distance, free from glare.



Waxed liners, inserted between the leaves, eliminate the need for rear spring lubrication.



The generator charging rate is automatically regulated to meet radio, heater and other electrical needs.



La Salle helical gears are virtually soundless in all speeds, and any driver can easily shift them without clashing.