

ACCESSORIES

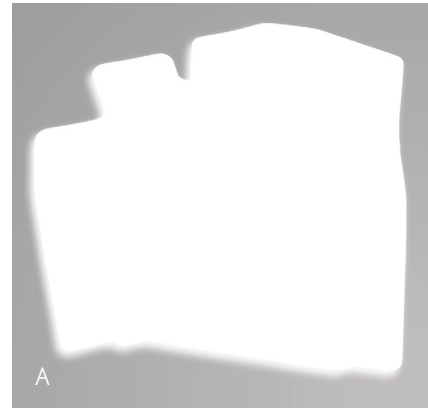
LEXUS SEDANS AND COUPES
2018





The **Lexus Accessory Line**⁷ is designed and manufactured to meet the same high standards as your Lexus vehicle. Plus, only accessories from the Lexus Accessory Line come with a warranty that is honored at all Lexus dealerships nationwide⁸ for up to 48 months/50,000 miles. To learn more about accessories from the Lexus Accessory Line, please visit **lexus.com/accessories**.





PROTECT

Defy damage and look impeccable while doing it. Lexus' protective accessories help defend against scuffs, scratches, debris and break-ins, all while enhancing your vehicle's sleek design. High-tech engineering and fabrication provides exceptional fit and superior performance.

A. All-Weather Floor Mats¹ B. Carpet Floor Mats¹ C. Paint Protection Film by 3MTM (Hood)⁵ D. Paint Protection Film by 3MTM (Front Bumper)⁵



E



G

F



H

- E. Emergency Assistance Kit
- F. Alloy Wheel Locks (Black Chrome)
- G. Alloy Wheel Locks (Chrome)
- H. First Aid Kit
- I. Carpet Trunk Mat
- J. Body Side Moldings
- K. All-Weather Trunk Tray
- L. Cargo Net - Spider²
- M. All-Weather Floor Liners¹
- N. Door Edge Guards
- O. Door Edge Film by 3MTM
- P. Cargo Net²
- Q. Glass Breakage Sensor (GBS)



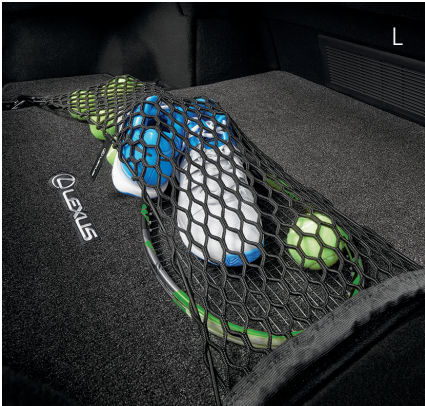
I



J



K



L



M



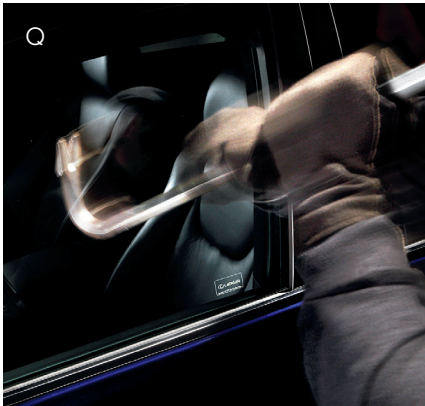
N



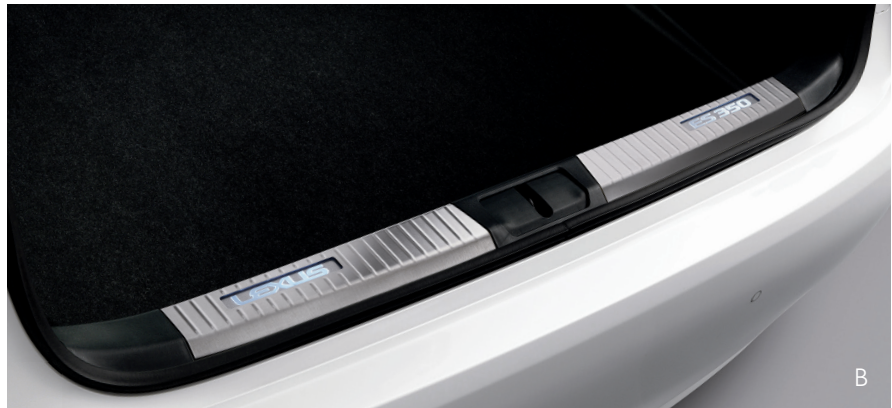
O



P



Q



REFINE

Because above and beyond is your norm. Outfit your Lexus with bold accessories that make a statement and elevate your driving experience at the same time. Designed with seamless artistry and ingenuity, each element adds a distinguishing and valuable upgrade.

A. Rear Spoiler B. Illuminated Trunk Sill C. Key Gloves D. Coin Holder/Ashtray Cup



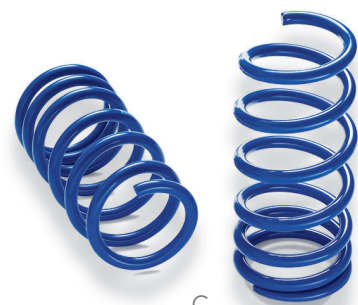
- E. Rear Bumper Appliqué
- F. Carbon Fiber Lower Grille Insert
- G. Illuminated Door Sills
- H. Lexus Universal Tablet Holder⁴
- I. Carbon Fiber Rear Spoiler



A



B



C



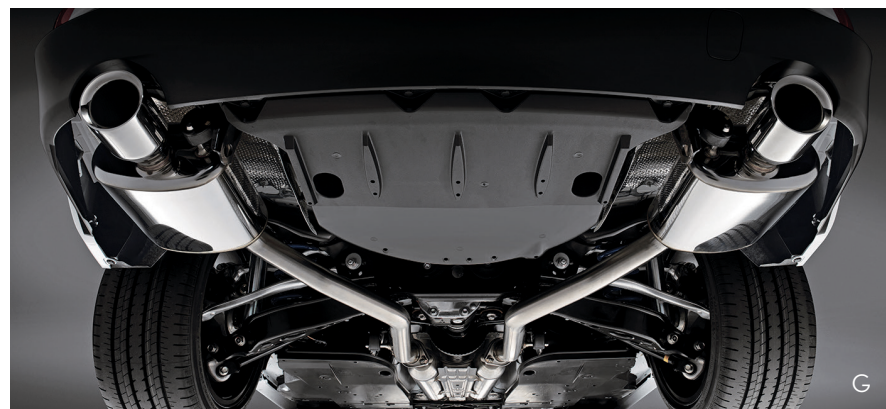
D



E



F



G



UNLEASH



When next level is really the only level. Give your Lexus that extra power and precision with F SPORT accessories. Rigorously engineered and tested to meet a broad range of requirements and specifications, these elegant enhancements will help set you up to push the limits.

A. F SPORT 18-in Five-Spoke Alloy Wheels⁶ B. F SPORT 19-in Split-Nine-Spoke Forged Alloy Wheels⁶ C. F SPORT Lowering Springs
D. F SPORT Key Gloves E. F SPORT Carpet Floor Mats¹ F. F SPORT Flat Tire Repair Kit G. F SPORT Performance Exhaust System

2018 LEXUS ACCESSORIES⁷

| | IS | ES | GS GS F | RC RC F | LC | LS |
|---|----|----|------------|------------|----|----|
| All-Weather Floor Liners ¹ | ■ | ■ | ■ | ■ | ■ | ■ |
| All-Weather Floor Mats ¹ | ■ | ■ | ■ | ■ | | |
| All-Weather Trunk Tray | | | | | ■ | ■ |
| Alloy Wheel Locks | ■ | ■ | ■ | ■ | ■ | ■ |
| Body Side Moldings | ■ | ■ | ■ | | | |
| Carbon Fiber Lower Grille Insert | | | | | ■ | |
| Carbon Fiber Rear Spoiler | | | | | ■ | |
| Cargo Net ² | ■ | ■ | ■ | ■ | | ■ |
| Cargo Net - Spider ² | | | | | ■ | |
| Carpet Floor Mats ¹ | ■ | ■ | ■ | ■ | ■ | ■ |
| Carpet Trunk Mat | ■ | ■ | ■ | ■ | ■ | ■ |
| Coin Holder/Ashtray Cup | ■ | ■ | ■ | ■ | | |
| Door Edge Film by 3M ^{TM3} | ■ | | | | | ■ |
| Door Edge Guards | ■ | ■ | ■ | ■ | | |
| Emergency Assistance Kit | ■ | ■ | ■ | ■ | ■ | ■ |
| First Aid Kit | ■ | ■ | ■ | ■ | ■ | ■ |
| Glass Breakage Sensor (GBS) | ■ | ■ | ■ | | ■ | ■ |
| Illuminated Door Sills | ■ | ■ | ■ | ■ | ■ | ■ |
| Illuminated Trunk Sill | | ■ | | | | |
| Key Gloves | ■ | ■ | ■ | ■ | ■ | ■ |
| Lexus Universal Tablet Holder ⁴ | ■ | ■ | ■ | | | |
| Paint Protection Film by 3M ^{TM5} | ■ | ■ | ■ | ■ | ■ | ■ |
| Rear Bumper Appliqué | ■ | ■ | ■ | ■ | | ■ |
| Rear Spoiler | ■ | ■ | ■ | ■ | | |
| F SPORT ACCESSORIES⁷ | | | | | | |
| 18-in Five-Spoke Alloy Wheels ⁶ | ■ | | | | | |
| 19-in Split-Nine-Spoke Forged Alloy Wheels ⁶ | | | ■ | ■ | | |
| Carpet Floor Mats ¹ | | | | | | ■ |
| Flat Tire Repair Kit | ■ | | ■ | ■ | | ■ |
| Key Gloves | ■ | | ■ | ■ | | ■ |
| Lowering Springs | ■ | | | ■ | | |
| Performance Exhaust System | | | | ■ | | |

IMPORTANT INFORMATION Vehicles shown with options. 1. Carpet and all-weather floor liners/mats are model specific with model names. Floor liners/mats are designed for use in a specific model and model year vehicle and SHOULD NOT be used in any other vehicle. To avoid potential interference with pedal operation, each liner/mat must be secured with its fasteners. Do not install a floor liner/mat on top of an existing floor liner/mat. 2. Cargo and load capacity limited by weight and distribution. 3. Lexus Genuine Accessory Warranty will only apply when the installation is performed by a trained Lexus-approved installer. See Lexus dealer for details. 4. Lexus Universal Tablet Holder is intended for passengers only. Drivers should always be sure to obey traffic regulations and maintain awareness of the road and traffic conditions at all times. Use of aftermarket accessories may pose an increased risk of injury to occupants in the vehicle in the event of an accident. Tablet, phone, music and video player sold separately. 5. Genuine Lexus Paint Protection Film by 3MTM is designed for specific sections of the hood and front fenders. It can also be applied to select portions of the front bumper for an additional charge. Lexus Genuine Accessory Warranty will only apply when the installation is performed by a trained Lexus-approved installer. Please see dealer for details.

6. 18-in or 19-in performance tires are expected to experience greater tire wear than conventional tires. Tire life may be substantially less than 15,000 miles, depending upon driving conditions.

7. For accessories purchased at the time of the new vehicle purchase, the Lexus Accessory Warranty coverage is in effect for 48 months/50,000 miles, from the vehicle's in-service date, which is the same coverage as the new vehicle Basic Warranty. For accessories purchased after the new vehicle purchase and installed by a Lexus dealer, the coverage is 12 months for the parts and labor, regardless of mileage, from the date the accessory was installed on the vehicle, or the remainder of any applicable new vehicle warranty, whichever provides greater coverage. Accessories purchased over the counter are covered for 12 months from the date of purchase. Refer to your Lexus accessory limited warranty or documentation that accompanies accessory purchase for coverage and conditions. 8. Warranty honored at all Lexus dealerships nationwide excluding Hawaii.

This brochure is based upon information available at time of printing, is subject to change without notice, is for mainland U.S.A. vehicles and may differ in the state of Hawaii, Puerto Rico, the U.S. Virgin Islands and in other regions.