



BONNEVILLE NAMEPLATE ADORNS MORE FUEL EFFICIENT CAR ... Targeted at full-size car owners who are looking for a smaller, more fuel efficient car, the 1982 Bonneville Model G four-door sedan (top) and station wagon (bottom) are six-passenger cars built on a 108.1-inch wheelbase. Standard 3.8-liter V-6 engine with automatic transmission has estimated EPA fuel economy ratings for all Bonnevilles of 20 mpg city and 30 highway.

PONTIAC MOTOR PUBLIC RELATIONS
PONTIAC, MI 48053

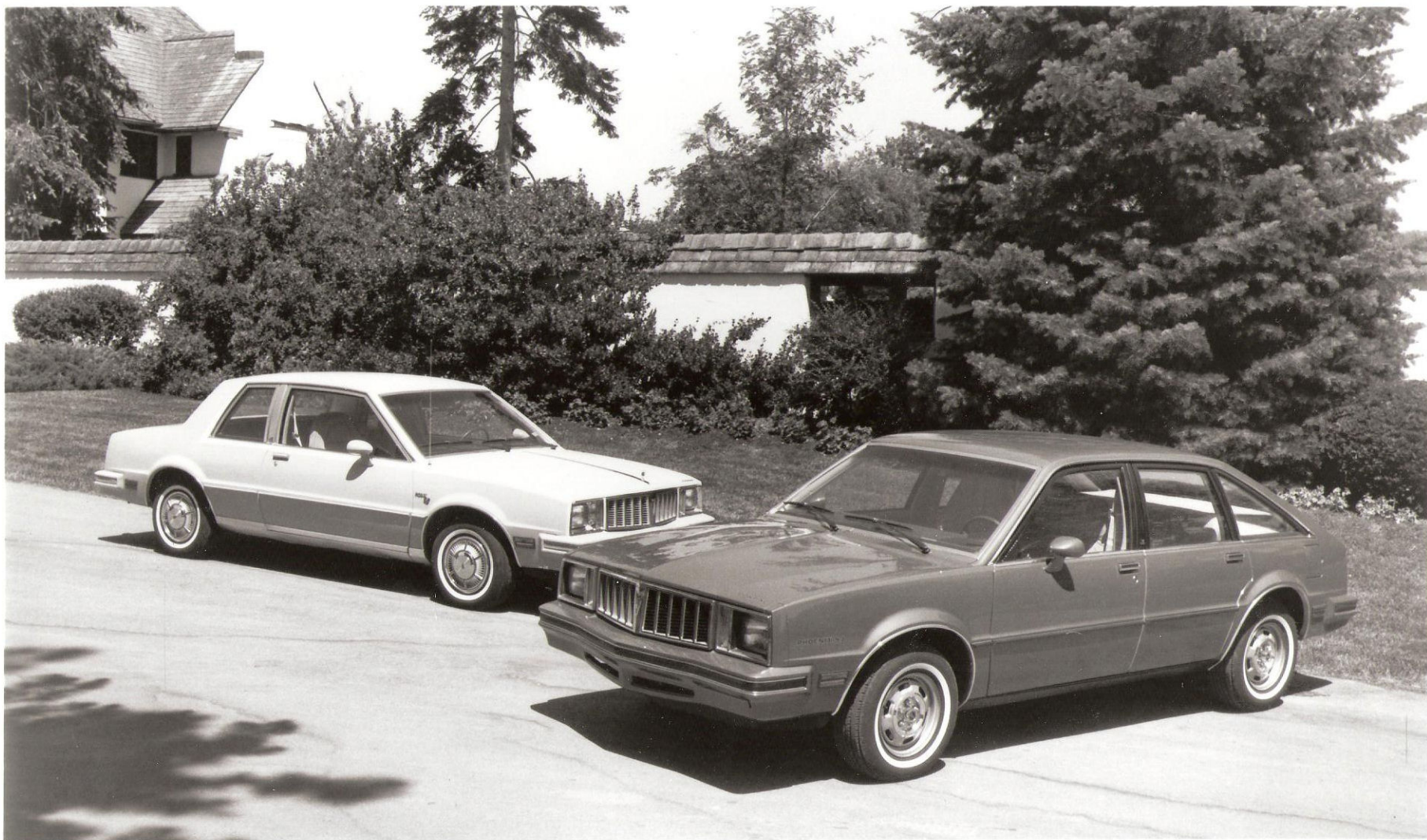


1982 PONTIAC GRAND PRIX BROUGHAM AND J2000 SE ... Grand Prix Brougham (top) models offer two levels of trim in 1982, retaining the stylish aerodynamic wedge-shape appearance. The sporty Pontiac J2000 SE hatchback (bottom) features standard reclining front bucket seats in cloth or vinyl, an optional rear deck spoiler and optional cast aluminum wheels.

FOR RELEASE:
Thursday, September 3, 1981

PONTIAC MOTOR PUBLIC RELATIONS
PONTIAC, MI 48053





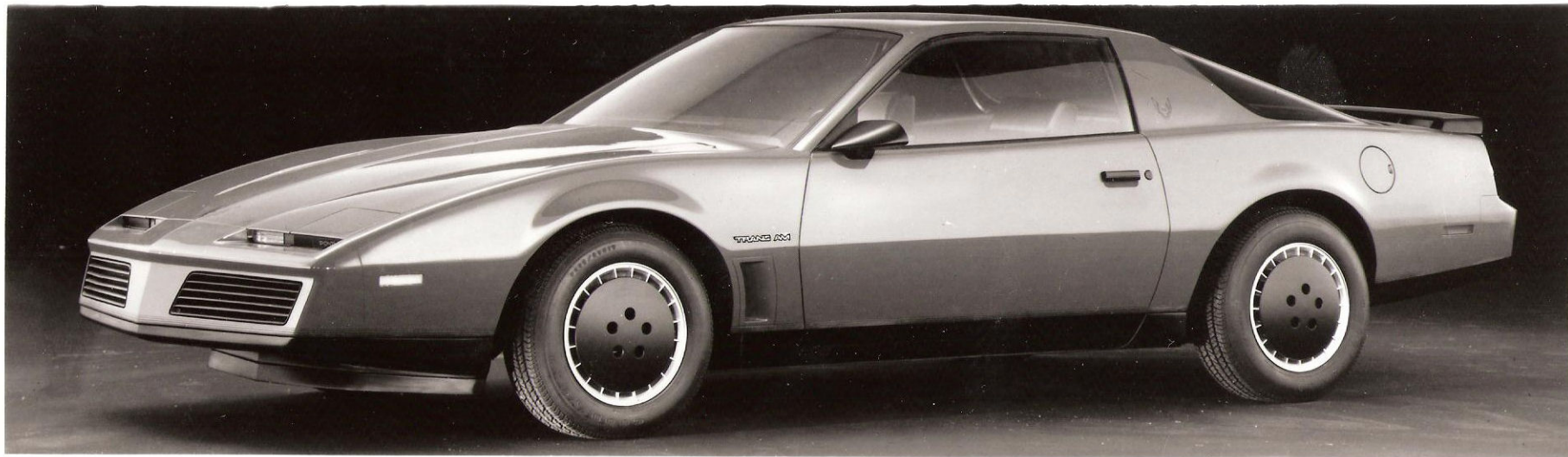
1982 PONTIAC PHOENIX ... Featuring a standard electronic fuel injected four-cylinder engine, the 1982 Pontiac Phoenix models with optional automatic transmission and air conditioning have approved EPA fuel economy ratings of 25 and 40 miles per gallon in city and highway driving respectively, a significant improvement over 1981. Shown above are a Phoenix LJ coupe and a first level Phoenix five-door hatchback.

PONTIAC MOTOR PUBLIC RELATIONS
PONTIAC, MI 48053



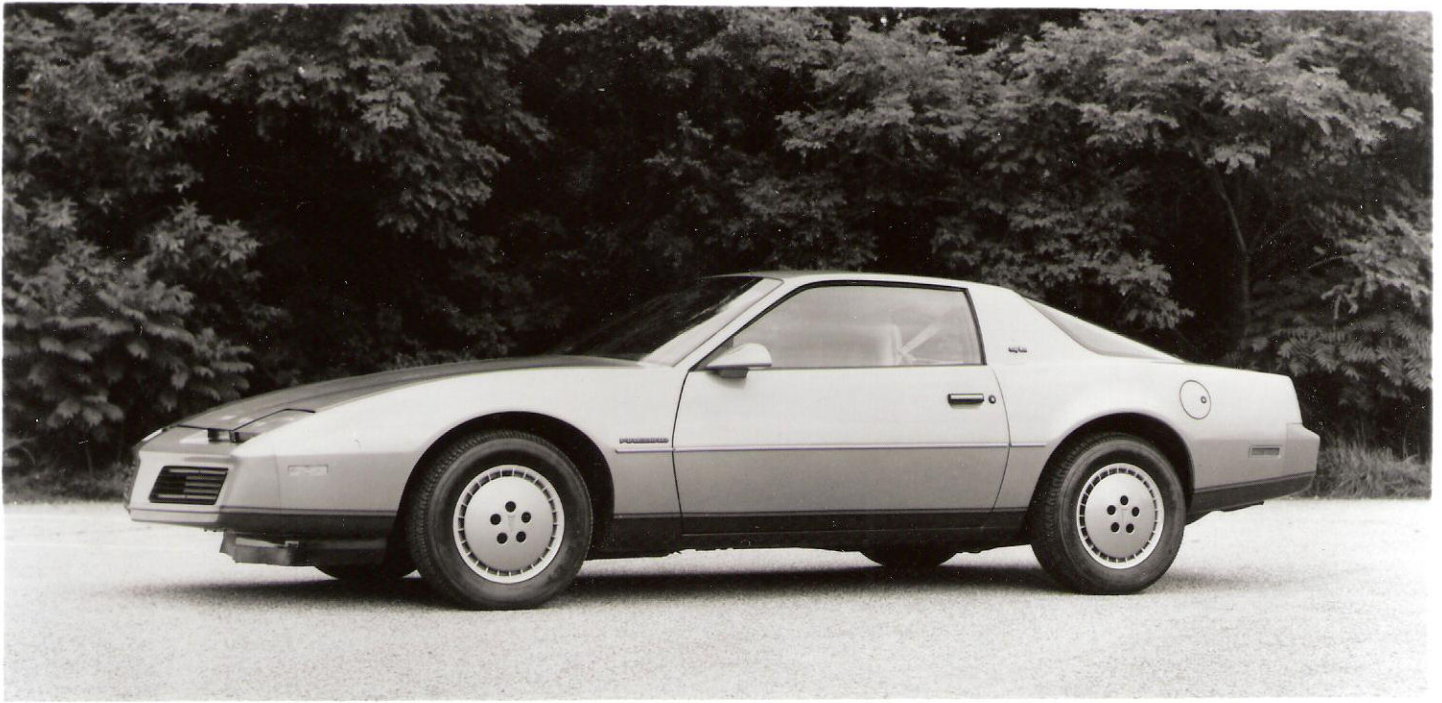
1982 PONTIAC T1000 ... A five-speed manual transmission is available on 1982 Pontiac T1000 three-door hatchback models and new cast aluminum wheels (shown) are optional on all T1000 models. Preliminary EPA fuel economy ratings on the standard 1.6-liter four-cylinder engine with a five-speed transmission are 30 and 43 miles per gallon in city and highway driving, respectively.

PONTIAC MOTOR PUBLIC RELATIONS
PONTIAC, MI 48053



1982 FIREBIRD TRANS AM ... Powered by a 5.0-liter V-8 four-barrel engine, the 1982 Trans Am is available with four-speed manual or three-speed automatic transmission as standard equipment. Also standard on all Trans Ams is a functional wing-type rear spoiler. All 1982 Firebird models carry four passengers and have a large, contoured frameless all-glass hatch, offering improvement in cargo space and versatility.

PONTIAC MOTOR PUBLIC RELATIONS
PONTIAC, MI 48053



1982 FIREBIRD S/E ... Featuring a tone-on-tone color concept, the 1982 Firebird S/E is powered by a 2.8-liter V-6 two-barrel engine with a four-speed manual transmission. The fuel efficient 2.5-liter EFI four-cylinder engine, available on S/E as a delete credit option, offers approved EPA fuel economy ratings of 24 and 34 miles per gallon in city and highway driving, respectively, with a four-speed manual transmission.

FOR RELEASE:
Wednesday, Dec. 2, 1981

PONTIAC MOTOR PUBLIC RELATIONS
PONTIAC, MI 48053